



NEW JERSEY DEPARTMENT OF
CHILDREN AND FAMILIES

Commissioner's Monthly Report August-24

Christine Beyer
Commissioner

Monthly Report

Table of Contents

TABLE OF CONTENTS	2
KEY PERFORMANCE INDICATORS	3
DCF AT A GLANCE - DASHBOARD	4
SECTION I: CHILD PROTECTION & PERMANENCY	5-7
SECTION II: ADOLESCENT SERVICES	8
SECTION III: INSTITUTIONAL ABUSE INVESTIGATION UNIT	8
SECTION IV: CHILDREN'S SYSTEM OF CARE	9
SECTION V: FAMILY & COMMUNITY PARTNERSHIPS	10
SECTION VI: DIVISION ON WOMEN	10-11
ADDENDUM 1: CASELOADS	12
ADDENDUM 2: CP&P KEY PERFORMANCE INDICATORS BY LOCAL OFFICE	13

¹Key Performance Indicators
On or About June 30th, 2024

	Observed Month	Rolling 12 Month Average	Performance	% Change from 12 Month Avg.
Investigation Timeliness CP&P 60 Days	April '24	83%	82%	-1%
Investigation Timeliness CP&P 90 Days	April '24	94%	94%	0%
CW Visits Child 2x/Month for first 2 Months in Placement	April '24	85%	83%	-2%
CW Visits Child Monthly (at placement site) ³	June '24	93%	92%	-1%
CW Visits with Parent 2x/Month - Goal of Reunification	June '24	62%	65%	5%
Parent-Child Weekly Visit ²	June '24	67%	68%	1%
Parent-Child Visits Bi-weekly	June '24	66%	79%	20%
Child Visit with Siblings	June '24	85%	87%	2%
Initial Case Plans	June '24	90%	81%	-10%
Ongoing Case Plans	June '24	95%	99%	4%
Initial FTMs within 45 days	May '24	65%	63%	-3%
Subsequent FTMs within 12 Months	June '24	72%	79%	10%
Subsequent FTMs after 12 Months - Reunification Goal (n=17)	June '24	72%	53%	-26%
Subsequent FTMs after 12 Months - Other than Reunification Goal	June '24	85%	85%	0%
Ind. Living Assessments 14-18 Years Old	June '24	80%	84%	5%
Caseloads: Intake	June '24	90%	93%	3%
Caseloads: Permanency	June '24	100%	100%	0%
Caseloads: Adoption	June '24	99%	98%	-1%
Supervisor Worker Ratio	June '24	100%	100%	0%
Investigation Timeliness IAIU	June '24	75%	65%	-13%
Caseloads: IAIU Investigators	June '24	99%	100%	1%
<div> <div></div> Performance is similar to or above the 12 months rolling average </div> <div> <div></div> Performance is below the 12 months rolling average </div>				

¹ In certain measures, performance excludes appropriate instances as per policy where events such as visits or family team meetings did not occur.

² Performance for Parent-Child Weekly Visits is calculated based on the average number of children with weekly visits over the average total number of eligible children for weekly visits.

³ Caseworker visits with Children in Placement (all locations) **June 2024: 97%**.



DCF At A Glance Dashboard

On or About June 30th, 2024

DCF At a Glance		CSOC ⁴ Quick Facts	
DCF: Total Children Served in the Month ¹	74,255	Youth Open with CSOC ⁵ (unduplicated count)	40,951
CP&P: Children/Youth Served	33,304	DD Eligible Children (unduplicated count)	13,769
Children Under 18	31,489	MRSS: Dispatches in the month	1,666
OOH Setting (< 18)	2,863	MRSS: Interventions ⁶ (February 2024)	2,831
In-Home Setting (< 18)	28,626	Remained in Same Living Situation	94%
Youth 18-21	1,815	Unable to Stabilize in home	0%
OOH Setting (>18)	202	Unknown (Plan not received)	6%
In-Home Setting (>18)	1,613	Care Management: Children Served	18,398
FCP: Total Clients Served ² (May)	6,160	OOH Settings : Children Served ⁷ (BH, I/DD, and SU)	1,065
DOW: Total Clients Served (May) (Excludes Displaced Homemaker)	4,185	Behavioral Health Placed out of State	0
DCF: Families Served in the Month ³	22,742	Intellectual /Developmental Disabilities Placed out of State	32
CP&P	16,753	PerformCare Calls	7,793
FCP (Family Success Centers & Home Visiting) (May)	5,989	DD Related Calls	1,971

CP&P Quick Facts		FCP & DoW Quick Facts ⁹	
Hotline Referrals	13,083	FSCs: Families Served (May 2024)	2,503
CPS Reports	37%	Home Visiting: Families Served (May 2024)	3,486
CWS Referrals	7%	SBYSP: Students Receiving Evidence-Based Prevention Programs (May 2024)	171
Number of Human Trafficking Referrals ⁸ (June 2024)	8		
Response Timeliness	99%	DV Services: Clients Served (May 2024)	2,451
Monthly Staff Contacts/Children OOH-Placement Site	92%	Residential	12%
Entries to Care	118	Non-Residential	88%
Exits from Care	158		
Subsidized Adoptions/KLG (Includes Subsidized Adoptions and subsidized KLGs)	12,691	SAARC: Clients Served (May 2024)	1,734

¹ Some children may be served by both CP&P and CSOC and are over-represented in the final count of children served in the month.

² FCP measures clients served in SBYSP and DV Services. Since Family Success Centers and Home Visitation programs report data in terms of families served, each family is assumed to have at least one client.

³ Families served by DCF includes CP&P families and FCP families. FCP families served data has a one month lag.

⁴ CSOC Children may receive multiple services and are counted multiple times.

⁵ The definition for "Youth Open with CSOC" reflects youth who are involved and eligible to receive services through CSOC.

⁶ Mobile Response Interventions has a five month lag to allow for the data to settle for accurate reporting.

⁷ As of October 2022, the CSOC OOH sections will now include all CSOC Out of Home Treatment Settings (Behavioral Health, Intellectual/Developmentally Disabled, and Substance Use). This includes updating the totals reported, a new 3-year OOH trend report, and a monthly OOH report grouped by similar treatment settings.

⁸ The cumulative number of human trafficking referrals between **November 2013 and June 2024 was 1,426**. This figure could change depending on when the data is extracted.

⁹ FCP quick facts are based on new families for FSCs, but both new and ongoing clients for Home Visiting and SBYSP. DoW quick facts are based on new clients for DV Services, but both new and ongoing clients served for SAARC, Displaced Homemakers and Rape Prevention Education.

Note: OOH Behavioral Health Settings: Children Served - Excludes Youth in Detention Alternatives and Diagnostic Settings.

Effective June 2017, All DoW data is reported Monthly except for Residential DV shelters and Unmet Needs Data.

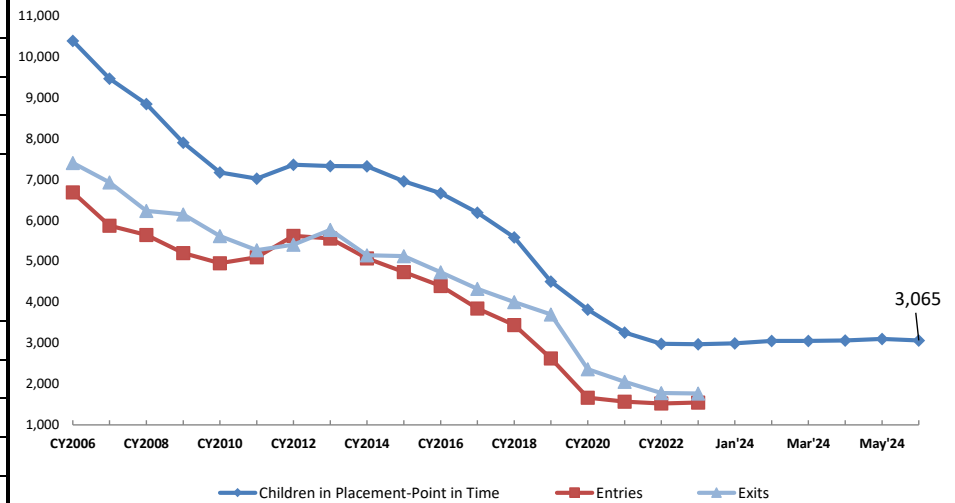
Note: Due to system upgrades within DCF, Displaced Homemaker data will not be available beginning November 2021. DCF will resume reporting on these data after the new systems have been updated with these data.

Section I: Child Protection & Permanency

CP&P Quick Facts

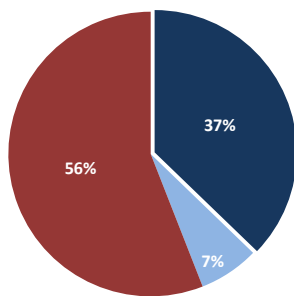
	Jun-24	Δ from Jun '23
Families Under CP&P Supervision	16,753	1%
Children Under CP&P Supervision	33,304	1%
Children Receiving CP&P In-Home Services	30,239	1%
Children in CP&P Out-of-Home Placement		
Resource Family (non-Kin)	40% 1,229	
Resource Family Kinship	48% 1,478	
Group and Residential	10% 305	
Independent Living	2% 53	
Children Legally Free for Adoption (Excludes TPR Appeals)	453	-12%
Finalized Adoptions to date (CY2024) - As of 6/30/2024	159	-6%
Children in Subsidized Kinship Legal Guardianship	1,285	-3%
Children in Subsidized Adoptions	11,406	-7%
Entries to Care	118	-19%
Exits from Care	158	-6%

Children in Out-of-Home Placement:
Annual Entries, Exits and Monthly Point in Time Children in Placement



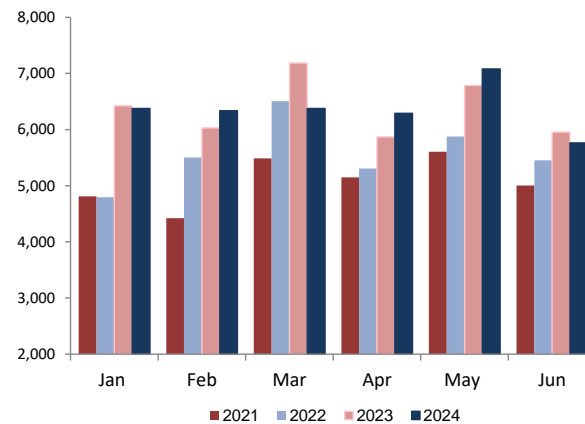
Total SCR Intakes

n = 13,083
June 2024

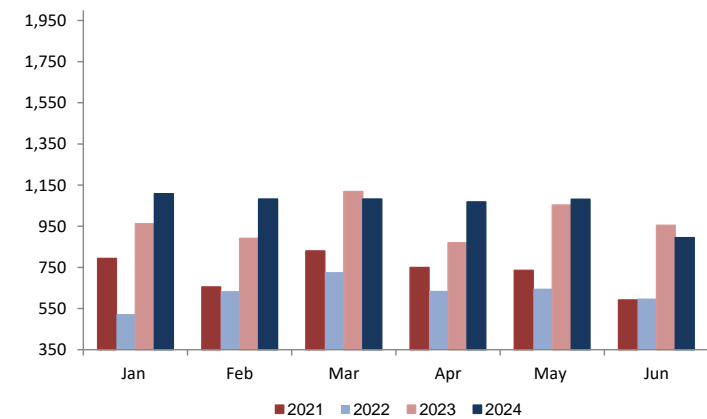


- CPS Reports
- CWS Referrals
- Non CPS/CWS Child Related Calls

CPS & CWS Referrals

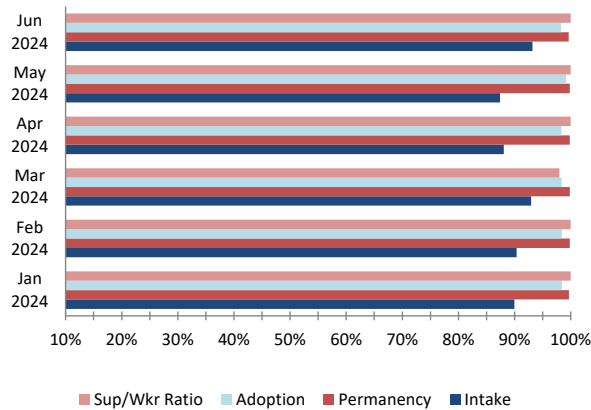


CWS Referrals Assigned to Local Offices

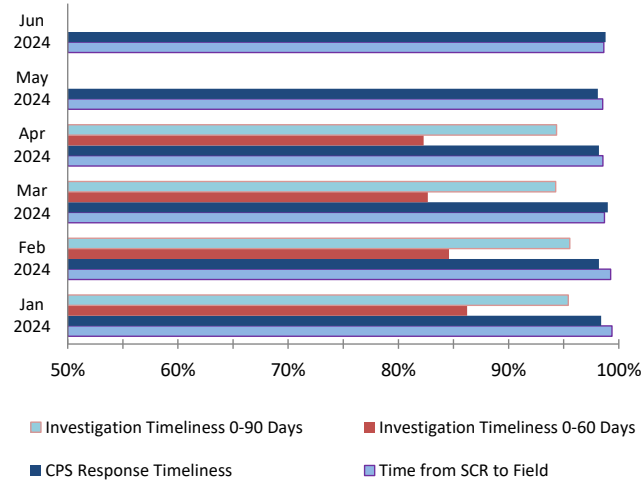


Section I: Child Protection & Permanency

**Caseload Compliance
(Individual Worker Level)**

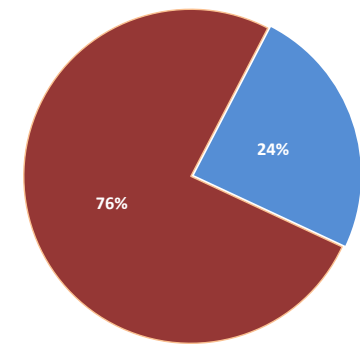


Response and Investigation Timeliness

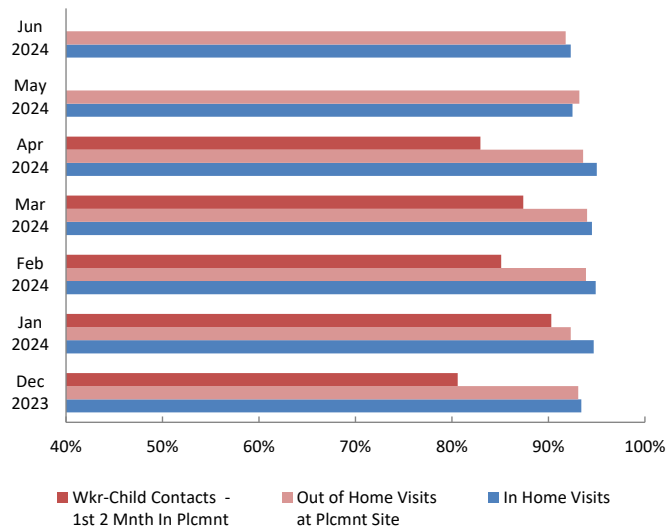


Referrals to Early Intervention

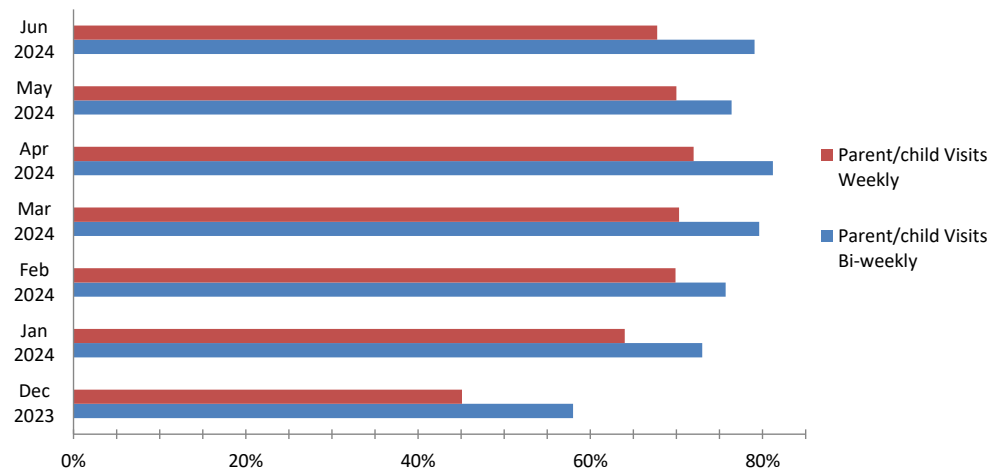
Oct 2023 - Jun 2024
n = 440



Worker - Child Visits

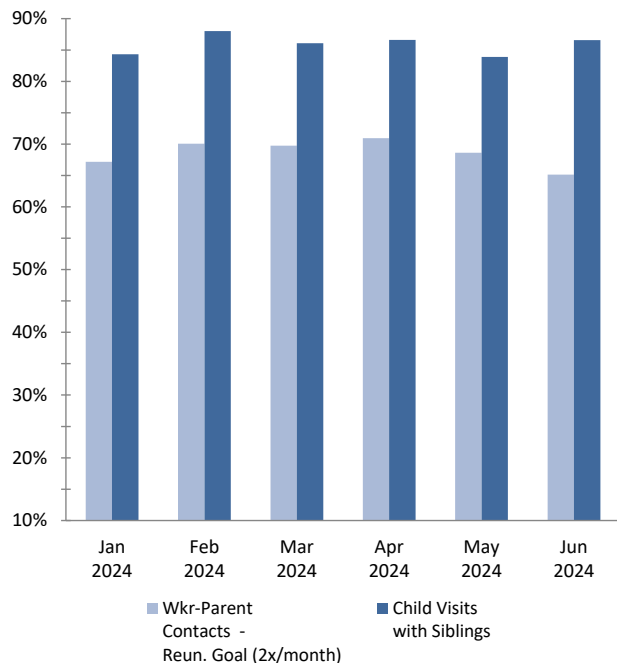


Parent - Child Visits

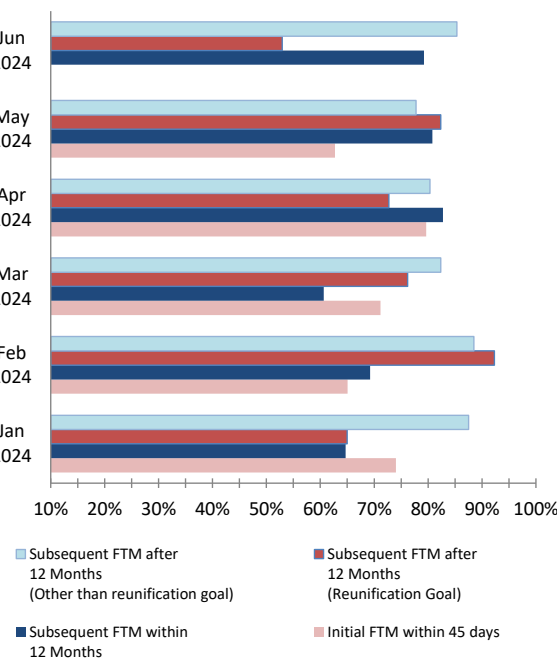


Section I: Child Protection & Permanency

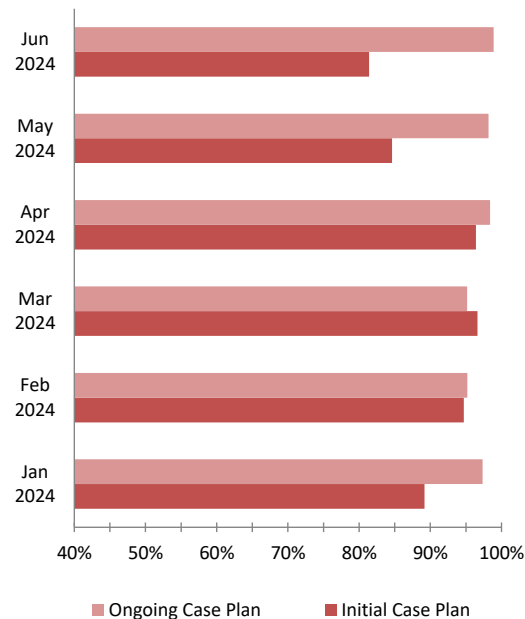
Worker- Parent Visits & Sibling Visits



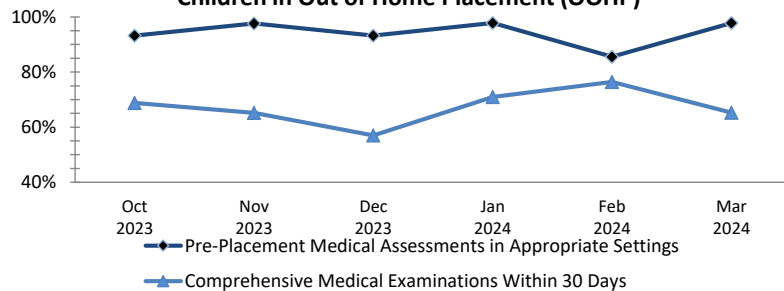
Initial & Subsequent Family Team Meetings



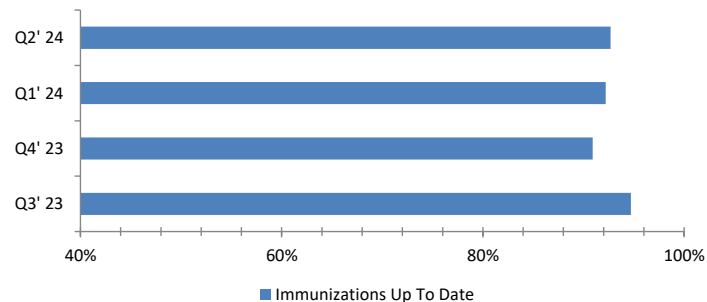
Initial & Ongoing Case Plans



Medical Assessments for Children in Out of Home Placement (OOHP)



Immunizations for Children in OOHP



Section II: Adolescent Services

OAS Quick Facts (June 2024)

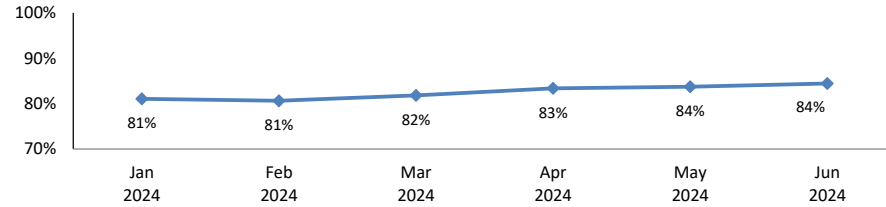
Youth 18-23

Youth 18-23 years old served by CP&P¹	1,815
Youth served "In Home" living with a parent/relative or living independently²	1,613
Youth served "Out-of-Home"	
Resource Family (non-Kin)	(38.1%) 77
Resource Family Kinship	(12.9%) 26
Congregate Care Setting	(26.2%) 53
Independent Living	(22.8%) 46
Youth Receiving Adoption or KLG Subsidy	999

¹ The data includes all 18-21 year olds who are active participants in an open CP&P case as of the end of the month.

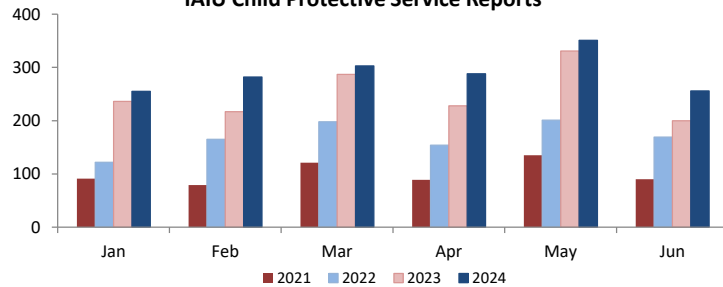
² The terms "out-of-home" and "in-home" may not be appropriate for all 18-21 year olds. Youth identified as "in-home" can either be residing with a parent/relative, or living independently. Any of these youth may be receiving services. These definitions are currently being reviewed to better understand how we capture DCF's work with this population. The goal of this ongoing work is to create three meaningful categories for 18-21 year olds 1) Youth in a formal out-of-home placement setting, 2) Youth that achieved permanency, and 3) Youth that never achieved permanency.

Completed Independent Living Assessments of Youth Ages 14-18 years



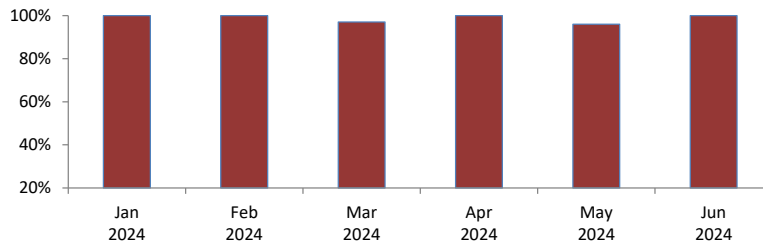
Section III: Institutional Abuse Investigation Unit

IAIU Child Protective Service Reports

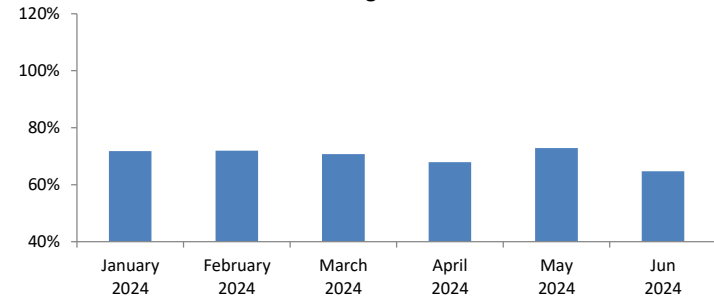


IAIU Caseload Report Statewide

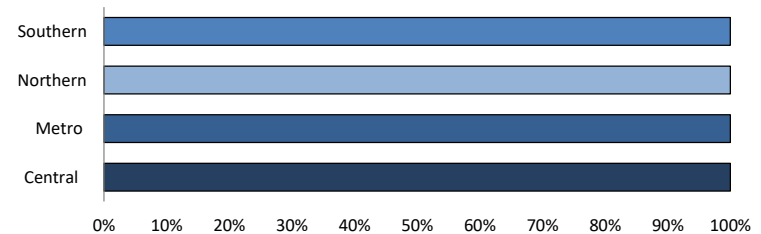
No more than 8 new investigations and 12 cases/month



IAIU Investigation Timeliness



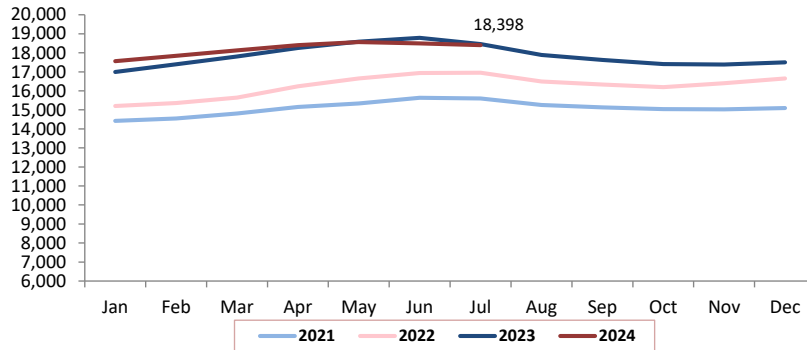
IAIU Caseload Report by Region June 2024



Section IV: Children's System of Care

Children in Care Management

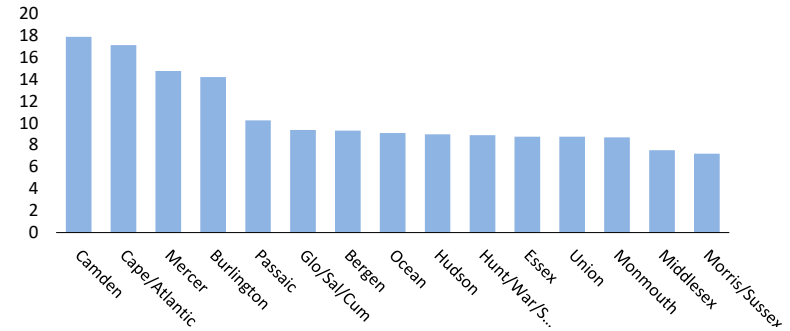
July 2024



Rate of Children in Care Management by Service Area

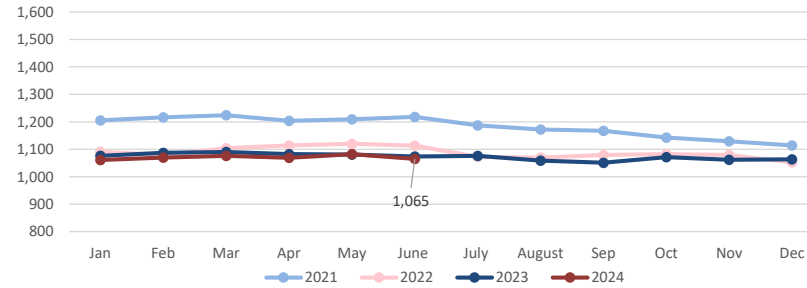
July 2024

n=18,398



Children in Out of Home Treatment Settings

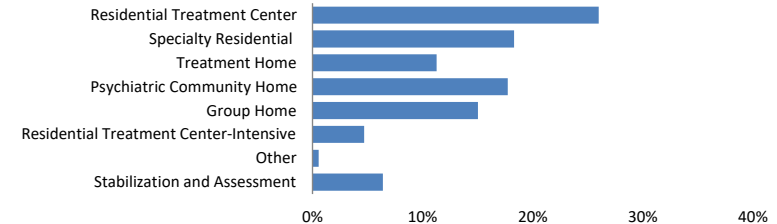
June 2024



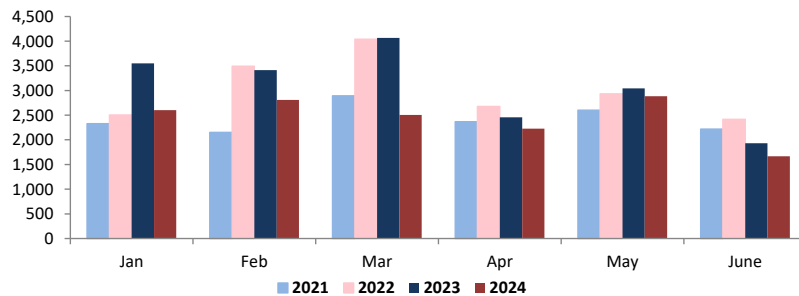
Children in Out-of-Home Treatment Settings

June 2024

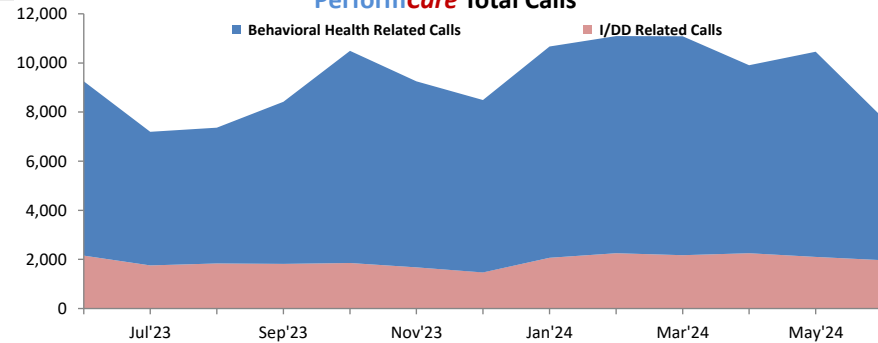
n= 1,065



Mobile Response Stabilization Services (MRSS) Dispatched

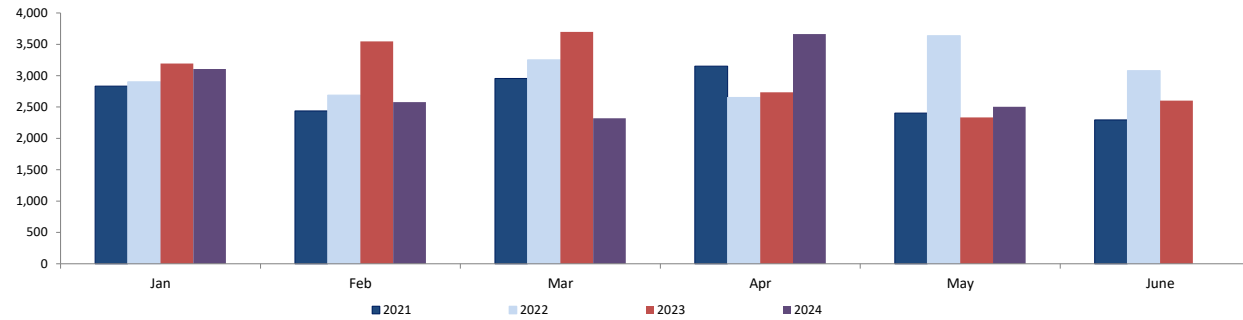


PerformCare Total Calls



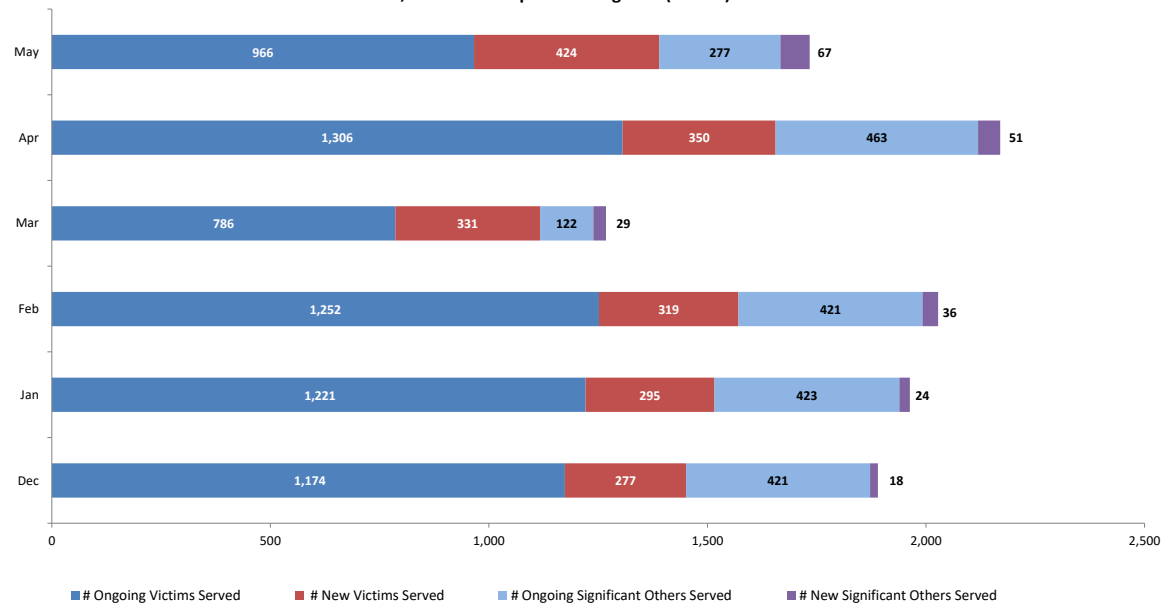
Section V: Family & Community Partnerships

Family Success Centers - Families Served



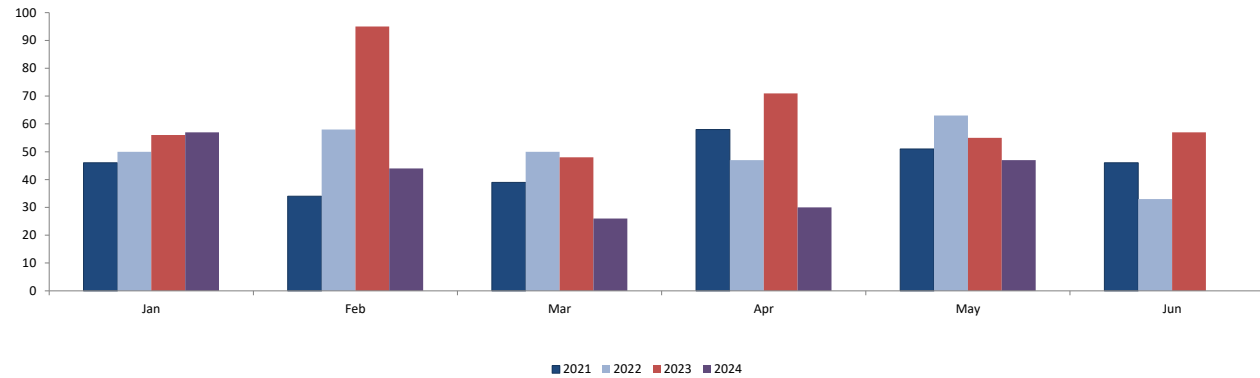
Section VI: Division on Women

Sexual Assault, Abuse and Rape Care Programs (SAARC)

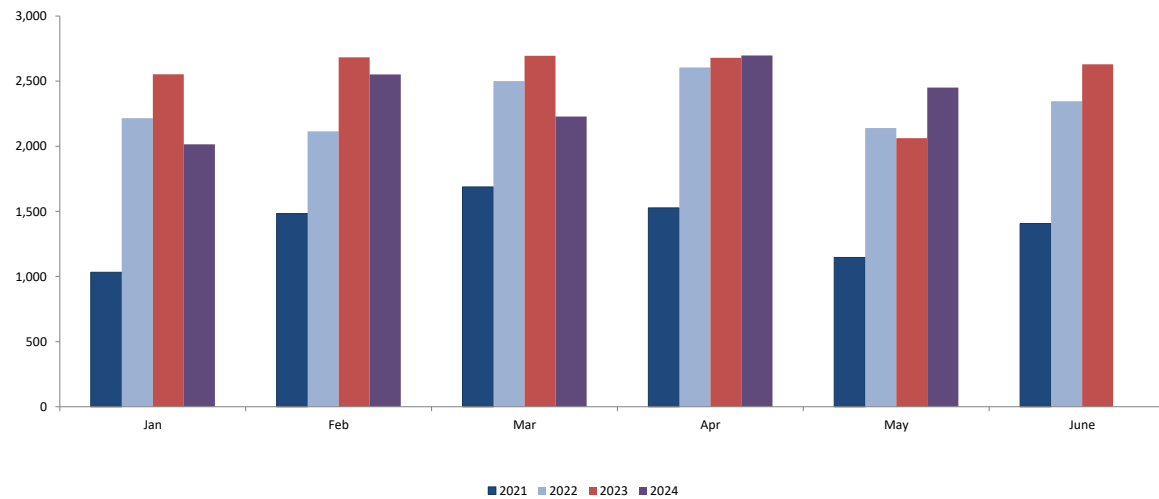


Section VI: Division on Women

**Residential Domestic Violence Programs:
Victims' Average Length of Stay (days)**



**Domestic Violence Services - Adults and Children
Admitted to Residential and Non-Residential Services
Total New Clients**



Worker and Office Caseloads by Worker Type and by Local Office - June 2024

	<div><div></div>At or Above Statewide Performance</div>		<div><div></div>Below Statewide Performance</div>			
Local Office	¹ Intake		² Permanency		³ Adoption	
	Worker Compliance	Office Compliant? Yes/No	Worker Compliance	Office Compliant? Yes/No	Worker Compliance	Office Compliant? Yes/No
Atlantic East	93%	Yes	100%	Yes	100%	Yes
Atlantic West	95%	Yes	100%	Yes	100%	Yes
Bergen Central	100%	Yes	100%	Yes	100%	Yes
Bergen South	97%	Yes	100%	Yes	100%	Yes
Burlington East	100%	Yes	100%	Yes	100%	Yes
Burlington West	70%	No	93%	No	100%	Yes
Camden Central	75%	No	100%	Yes	100%	Yes
Camden East	91%	Yes	100%	Yes	100%	Yes
Camden North	100%	Yes	100%	Yes	100%	Yes
Camden South	100%	Yes	100%	Yes	100%	Yes
Cape May	100%	Yes	100%	Yes	100%	Yes
Cumberland East	43%	No	100%	Yes	100%	Yes
Cumberland West	100%	Yes	100%	Yes	100%	Yes
Essex Central	100%	Yes	100%	Yes	100%	Yes
Essex North	90%	Yes	100%	Yes	100%	Yes
Essex South	89%	No	100%	Yes	100%	Yes
Gloucester East	92%	Yes	89%	No	100%	Yes
Gloucester West	100%	Yes	100%	Yes	100%	Yes
Hudson Central	100%	Yes	100%	Yes	100%	Yes
Hudson North	100%	Yes	100%	Yes	100%	Yes
Hudson South	100%	Yes	100%	Yes	100%	Yes
Hudson West	100%	Yes	100%	Yes	100%	Yes
Hunterdon	100%	Yes	100%	Yes	100%	Yes
Mercer North	100%	Yes	100%	Yes	100%	Yes
Mercer South	100%	Yes	100%	Yes	100%	Yes
Middlesex Central	88%	No	100%	Yes	100%	Yes
Middlesex Coastal	96%	Yes	100%	Yes	100%	Yes
Middlesex West	93%	Yes	100%	Yes	100%	Yes
Monmouth North	100%	Yes	100%	Yes	100%	Yes
Monmouth South	100%	Yes	100%	Yes	100%	Yes
Morris East	100%	Yes	100%	Yes	100%	Yes
Morris West	82%	No	100%	Yes	100%	Yes
Newark Center City	94%	Yes	100%	Yes	100%	Yes
Newark Northeast	92%	Yes	100%	Yes	100%	Yes
Newark South	100%	Yes	100%	Yes	100%	Yes
Ocean North	97%	Yes	100%	Yes	100%	Yes
Ocean South	100%	Yes	100%	Yes	100%	Yes
Passaic Central	88%	No	100%	Yes	67%	No
Passaic North	94%	Yes	100%	Yes	100%	Yes
Salem	69%	No	100%	Yes	100%	Yes
Somerset	75%	No	100%	Yes	50%	No
Sussex	100%	Yes	100%	Yes	100%	Yes
Union Central	89%	No	100%	Yes	100%	Yes
Union East	95%	Yes	100%	Yes	100%	Yes
Union West	73%	No	100%	Yes	100%	Yes
Warren	100%	Yes	100%	Yes	100%	Yes
Statewide ⁴	93%	Yes	100%	Yes	98%	Yes

1 Intake

- Intake worker compliance: % of workers with no more than 8 new intakes in the month, no more than 12 Primary families and no more than a total of 14 families.

- Office Compliance: % of offices that meet the caseload standards of no more than 8 new intakes and 12 total families.

2 Permanency

- Permanency worker compliance: % of workers who meet the caseload standards of no more than 15 families and 10 children in placement.

- Office Compliance: % of offices that meet the caseload standards of no more than 15 families and 10 children in placement.

3 Adoption

- Adoption worker compliance: % of adoption workers who meet the caseload standards of 15 or fewer children.

- Office Compliance: % of offices that meet the caseload standards of 15 or fewer children.

- Offices with blank data do not carry adoption caseloads, however adoption cases in those offices are handled by other offices in that area.

4 Statewide

- Performance is based on total workers in compliance for the month, not an average. Percentages are rounded to the whole number.

CP&P Key Performance Indicators by Local Office - 6 Months View														
Local Office	CPS Investigations Completed w/ 60 Days	CPS Investigations Completed w/ 90 Days	Monthly Staff Visits w/Children in Placement	Visits w/Children in Placement 2x/Month for 2 Months	Visits with Parents of Children in Placement 2x/Month	Weekly Parent/Child Visits-Children with Goal of Reunification	Bi-weekly Parent-Child Visits-Children with Goal of Reunification	Monthly Sibling Visits	Initial Case Plans w/ 30 Days of Placement	6 Months Review of Case Plans for Children in Placement	Initial Family Team Meetings w/ 45 days of Placement	3 Family Team Meetings in the first 12 months of Placement	3 Family Team Meetings after 12 months in Placement	2 Family Team Meeting after 12 months in Placement
Atlantic East	88%	96%	96%	90%	67%	64%	73%	83%	100%	100%	83%	89%	33%	100%
Atlantic West	91%	97%	96%	100%	64%	81%	79%	73%	100%	100%	100%	100%	100%	88%
Bergen Central	95%	98%	95%	89%	75%	100%	82%		88%	100%	86%	100%		91%
Bergen South	83%	95%	97%	68%	69%	53%	67%	81%	100%	100%	31%	100%	60%	43%
Burlington East	86%	97%	98%	88%	78%	39%	71%	90%	100%	100%	77%	75%	100%	100%
Burlington West	71%	91%	79%	54%	62%	68%	77%	82%	95%	91%	58%	0%	100%	18%
Camden Central	82%	93%	88%	76%	75%	67%	87%	87%	91%	93%	58%	56%	100%	100%
Camden East	67%	88%	90%	90%	63%	68%	85%	80%	96%	88%	61%	83%	100%	100%
Camden North	72%	90%	94%	81%	69%	68%	73%	92%	96%	100%	63%	40%	67%	100%
Camden South	76%	97%	94%	97%	76%	70%	80%	95%	89%	92%	74%	68%		86%
Cape May	86%	95%	96%	77%	68%	72%	84%	90%	100%	100%	55%	100%	100%	100%
Cumberland East	61%	86%	95%	100%	84%	95%	91%	95%	100%	100%	88%			92%
Cumberland West	65%	92%	98%	100%	72%	71%	79%	90%	100%	100%	88%	100%		100%
Essex Central	86%	95%	96%	94%	72%	59%	73%	92%	100%	100%	88%	100%	100%	88%
Essex North	86%	95%	97%	62%	73%	38%	38%	42%	100%	100%	67%	0%	0%	75%
Essex South	82%	94%	96%	81%	60%	50%	73%	92%	92%	100%	82%	70%	89%	100%
Gloucester East	94%	98%	96%	97%	52%	67%	85%	91%	86%	100%	94%	75%	100%	82%
Gloucester West	83%	95%	95%	81%	79%	82%	84%	93%	75%	98%	91%	100%	100%	89%
Hudson Central	76%	90%	95%	79%	82%	74%	92%	91%	75%	100%	75%	40%	100%	69%
Hudson North	79%	95%	98%	83%	91%	75%	100%	58%	50%	100%	75%	100%		75%
Hudson South	85%	95%	95%	88%	40%	39%	81%	89%	60%	93%	33%	0%	0%	73%
Hudson West	87%	97%	96%		87%	84%	85%	89%	75%	100%	50%	33%		100%
Hunterdon	92%	97%	100%	100%	100%		100%	100%	100%	100%	100%			100%
Mercer North	72%	91%	91%	80%	64%	56%	73%	78%	97%	100%	52%	40%	100%	79%
Mercer South	76%	91%	95%	40%	36%	31%	48%	70%	60%	98%	63%	50%	50%	75%
Middlesex Central	67%	89%	97%	75%	82%	55%	68%	72%	89%	100%	90%	86%	0%	0%
Middlesex Coastal	85%	96%	92%	76%	79%	83%	80%	79%	100%	93%	64%	33%	43%	43%
Middlesex West	82%	94%	95%	89%	57%	80%	74%	80%	100%	100%	83%	100%	100%	100%
Monmouth North	97%	99%	95%	83%	79%	81%	87%	98%	100%	95%	79%	69%	0%	50%
Monmouth South	94%	98%	94%	88%	68%	62%	78%	79%	84%	79%	93%	100%	100%	100%
Morris East	86%	96%	93%	100%	92%	100%	92%	95%	100%	100%	90%	100%	100%	100%
Morris West	90%	98%	97%	89%	89%	100%	98%	98%	100%	100%	100%	100%	100%	86%
Newark Center City	86%	95%	99%	100%	82%	76%	77%	95%	100%	98%	89%	83%	100%	87%
Newark Northeast	72%	90%	86%	95%	32%	45%	65%	78%	100%	100%	53%	64%	50%	100%
Newark South	90%	95%	100%	96%	88%	60%	80%	98%	92%	100%	100%	100%	100%	100%
Ocean North	93%	98%	97%	96%	73%	79%	76%	88%	80%	93%	56%	71%	100%	100%
Ocean South	94%	98%	93%	97%	65%	71%	76%	88%	100%	96%	44%	100%	33%	78%
Passaic Central	93%	98%	98%	100%	82%	100%	79%	85%	100%	100%	93%	100%		100%
Passaic North	92%	97%	97%	100%	91%	100%	94%	98%	100%	100%	96%	100%	100%	100%
Salem	71%	88%	99%	100%	92%	76%	85%	88%	100%	100%	100%	100%	100%	100%
Somerset	83%	95%	79%	50%	54%	69%	93%	95%	100%	100%	50%	100%		67%
Sussex	95%	98%	98%	100%	91%	100%	92%	88%	100%	100%	100%	100%		100%
Union Central	71%	91%	96%	100%	67%	65%	84%	97%	100%	100%	100%	75%		100%
Union East	81%	94%	97%	100%	85%	100%	86%	85%	86%	95%	100%	45%		29%
Union West	66%	91%	90%	100%	80%	70%	79%	83%	100%	100%	100%	27%		17%
Warren	62%	89%	86%	73%	56%	60%	59%	84%	88%	92%	71%	90%	100%	100%
Statewide	83%	95%	94%	85%	71%	68%	79%	87%	93%	98%	73%	73%	73%	84%
Blank cells mean that the office did not have any children eligible for that measure during that period.														
Description of the Measure											Time Period Analyzed			
CPS Investigations Completed w/ 60 Days											November 23 - 'April 24			
CPSInvestigations Completed w/ 90 Days											November 23 - 'April 24			
MonthlyStaff Visits w/Children in Placement											January 24 - 'June 24			
Visits w/Children in Placement 2x/Month for 2 Months											November 23 - 'April 24			
Visits with Parents of Children in Placement 2x/Month											January 24 - 'June 24			
Weekly Parent/Child Visits-Children with Goal of Reunification											5/25/2024 - '6/29/2024			
Bi-weekly Parent-Child Visits-Children with Goal of Reunification											January 24 - 'June 24			
Monthly Sibling Visits											January 24 - 'June 24			
Initial Case Plans w/ 30 Days of Placement											January 24 - 'June 24			
6 Months Review of Case Plans for Children in Placement											January 24 - 'June 24			
Initial Family Team Meetings w/ 45 days of Placement											December 23 - 'May 24			
3 Family Team Meetings in the first 12 months of Placement											January 24 - 'June 24			
3 Family Team Meetings after 12 months in Placement											January 24 - 'June 24			
2 Family Team Meeting after 12 months in Placement											January 24 - 'June 24			