



NEW JERSEY DEPARTMENT OF  
CHILDREN AND FAMILIES

## Commissioner's Monthly Report August-25

Christine Beyer  
Commissioner

## Monthly Report

### Table of Contents

<b>TABLE OF CONTENTS</b>	<b>2</b>
<b>KEY PERFORMANCE INDICATORS</b>	<b>3</b>
<b>DCF AT A GLANCE - DASHBOARD</b>	<b>4</b>
<b>SECTION I: CHILD PROTECTION &amp; PERMANENCY</b>	<b>5-7</b>
<b>SECTION II: ADOLESCENT SERVICES</b>	<b>8</b>
<b>SECTION III: INSTITUTIONAL ABUSE INVESTIGATION UNIT</b>	<b>8</b>
<b>SECTION IV: CHILDREN'S SYSTEM OF CARE</b>	<b>9</b>
<b>SECTION V: FAMILY &amp; COMMUNITY PARTNERSHIPS</b>	<b>10</b>
<b>SECTION VI: DIVISION ON WOMEN</b>	<b>10-11</b>
<b>ADDENDUM 1: CASELOADS</b>	<b>12</b>
<b>ADDENDUM 2: CP&amp;P KEY PERFORMANCE INDICATORS BY LOCAL OFFICE</b>	<b>13</b>

## <sup>1</sup>Key Performance Indicators On or About June 30<sup>th</sup>, 2025

	Observed Month	Rolling 12 Month Average	Performance	% Difference
Investigation Timeliness CP&P 60 Days	April '25	81%	76%	-5%
Investigation Timeliness CP&P 90 Days	April '25	94%	90%	-4%
CW Visits Child 2x/Month for first 2 Months in Placement	April '25	81%	84%	3%
CW Visits Child Monthly (at placement site) <sup>3</sup>	June '25	92%	93%	1%
CW Visits with Parent 2x/Month - Goal of Reunification	June '25	67%	65%	-2%
Parent-Child Weekly Visit <sup>2</sup>	June '25	65%	64%	-1%
Parent-Child Visits Bi-weekly	June '25	75%	74%	-1%
Child Visit with Siblings	June '25	81%	74%	-7%
Initial Case Plans	June '25	88%	86%	-2%
Ongoing Case Plans	June '25	96%	98%	2%
Initial FTMs within 45 days	May '25	61%	58%	-3%
Subsequent FTMs within 12 Months	June '25	62%	73%	11%
Subsequent FTMs after 12 Months - Reunification Goal (n=17)	June '25	60%	47%	-13%
Subsequent FTMs after 12 Months - Other than Reunification Goal	June '25	84%	82%	-2%
Ind. Living Assessments 14-18 Years Old	June '25	83%	77%	-6%
Caseloads: Intake	June '25	94%	92%	-2%
Caseloads: Permanency	June '25	100%	100%	0%
Caseloads: Adoption	June '25	99%	99%	0%
Supervisor Worker Ratio	June '25	100%	100%	0%
Investigation Timeliness IAIU 60 Days	April '25	72%	81%	9%
Caseloads: IAIU Investigators	June '25	99%	97%	-2%
<div> <div></div> Performance is similar to or above the 12 months rolling average </div> <div> <div></div> Performance is below the 12 months rolling average </div>				

<sup>1</sup> In certain measures, performance excludes appropriate instances as per policy where events such as visits or family team meetings did not occur.

<sup>2</sup> Performance for Parent-Child Weekly Visits is calculated based on the average number of children with weekly visits over the average total number of eligible children for weekly visits.

<sup>3</sup> Caseworker visits with Children in Placement (all locations) **June 2025: 97%.**

## DCF At A Glance Dashboard

On or About June 30<sup>th</sup>, 2025

DCF At A Glance		CSOC <sup>4</sup> Quick Facts	
DCF: Total Children Served in the Month <sup>1</sup>	73,885	Youth Open with CSOC <sup>5</sup> (unduplicated count)	39,852
CP&P: Children/Youth Served	34,033	DD Eligible Children (unduplicated count)	14,105
Children Under 18	32,197	MRSS: Dispatches in the month	2,133
OOH Setting (<18)	2,934	MRSS: Interventions <sup>6</sup> (February 2025)	2,625
In-Home Setting (<18)	29,263	Remained in Same Living Situation	95%
Youth 18-21	1,836	Unable to Stabilize in home	1%
OOH Setting (>18)	204	Unknown (Plan not received)	4%
In-Home Setting (>18)	1,632	Care Management: Children Served	18,061
FCP: Total Clients Served <sup>2</sup> (May)	7,835	OOH Settings : Children Served <sup>7</sup> (BH, I/DD, and SU)	1,060
DOW: Total Clients Served (May) (Excludes Displaced Homemaker)	4,398	Behavioral Health Placed out of State	0
DCF: Families Served in the Month <sup>3</sup>	24,292	Intellectual/Developmental Disabilities Placed out of State	48
CP&P	16,801	PerformCare Calls	8,712
FCP (Family Success Centers & Home Visiting) (May)	7,491	DD Related Calls	2,534

CP&P Quick Facts		FCP & DoW Quick Facts <sup>9</sup>	
Hotline Referrals	16,467	FSCs: Families Served (May 2025)	2,000
CPS Reports	29%	Home Visiting: Families Served (May 2025)	5,491
CWS Referrals	5%	SBYSP: Students Receiving Evidence-Based Prevention Programs (May 2025)	344
Number of Human Trafficking Referrals <sup>8</sup> (June 2025)	5		
Response Timeliness	97%	DV Services: Clients Served (May 2025)	2,294
Monthly Staff Contacts/Children OOH-Placement Site	93%	Residential	15%
Entries to Care	154	Non-Residential	85%
Exits from Care	145		
Subsidized Adoptions/KLG (Includes Subsidized Adoptions and subsidized KLGs)	11,893	SAARC: Clients Served (May 2025)	2,104

<sup>1</sup> Some children may be served by both CP&P and CSOC and are over-represented in the final count of children served in the month.

<sup>2</sup> FCP measures clients served in SBYSP and DV Services. Since Family Success Centers and Home Visitation programs report data in terms of families served, each family is assumed to have at least one client.

<sup>3</sup> Families served by DCF includes CP&P families and FCP families. FCP families served data has a one month lag.

<sup>4</sup> CSOC Children may receive multiple services and are counted multiple times.

<sup>5</sup> The definition for "Youth Open with CSOC" reflects youth who are involved and eligible to receive services through CSOC.

<sup>6</sup> Mobile Response Interventions has a five month lag to allow for the data to settle for accurate reporting.

<sup>7</sup> As of October 2022, the CSOC OOH sections will now include all CSOC Out of Home Treatment Settings (Behavioral Health, Intellectual/Developmentally Disabled, and Substance Use). This includes updating the totals reported, a new 3-year OOH trend report, and a monthly OOH report grouped by similar treatment settings.

<sup>8</sup> The cumulative number of human trafficking referrals between **November 2013 and June 2025 was 1,509**. This figure could change depending on when the data is extracted.

<sup>9</sup> FCP quick facts are based on new families for FSCs, but both new and ongoing clients for Home Visiting and SBYSP. DoW quick facts are based on new clients for DV Services, but both new and ongoing clients served for SAARC, Displaced Homemakers and Rape Prevention Education.

Note: OOH Behavioral Health Settings: Children Served - Excludes Youth in Detention Alternatives and Diagnostic Settings.

Effective June 2017, All DoW data is reported Monthly except for Residential DV shelters and Unmet Needs Data.

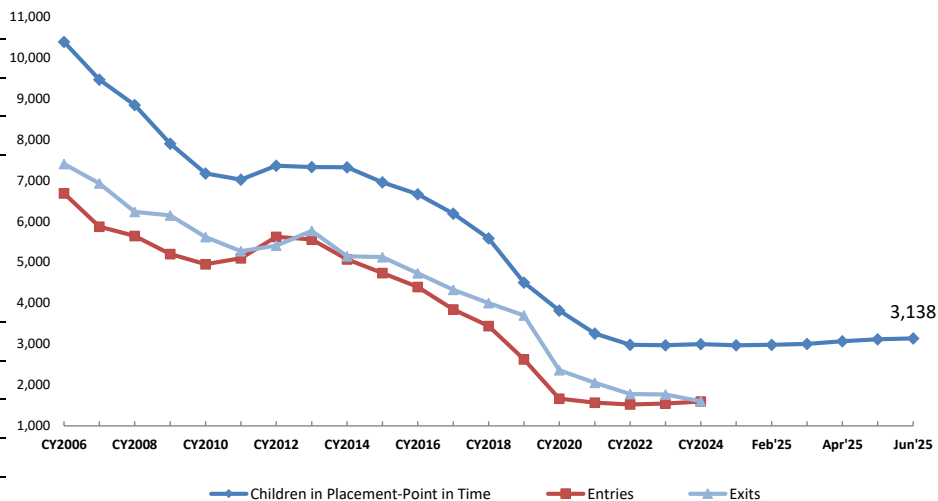
Note: Due to system upgrades within DCF, Displaced Homemaker data will not be available beginning November 2021. DCF will resume reporting on these data after the new systems have been updated with these data.

## Section I: Child Protection & Permanency

### CP&P Quick Facts

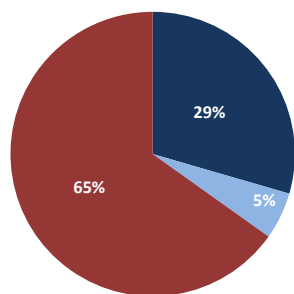
	As of Jun 30th 2025	Δ from Jun '24
<b>Families Under CP&amp;P Supervision</b>	16,801	0%
<b>Children Under CP&amp;P Supervision</b>	34,033	2%
<b>Children Receiving CP&amp;P In-Home Services</b>	30,895	2%
<b>Children in CP&amp;P Out-of-Home Placement</b>		
Resource Family (non-Kin)	41% 1,279	3,138 2%
Resource Family Kinship	45% 1,426	
Group and Residential	13% 394	
Independent Living	1% 39	
<b>Children Legally Free for Adoption (Excludes TPR Appeals)</b>	428	-6%
<b>Finalized Adoptions to date (CY2025) - As of 06/30/2025</b>	113	-29%
<b>Children in Subsidized Kinship Legal Guardianship</b>	1,303	1%
<b>Children in Subsidized Adoptions</b>	10,590	-7%
<b>Entries to Care</b>	154	31%
<b>Exits from Care</b>	145	-8%

**Children in Out-of-Home Placement:**  
Annual Entries, Exits and Monthly Point in Time Children in Placement



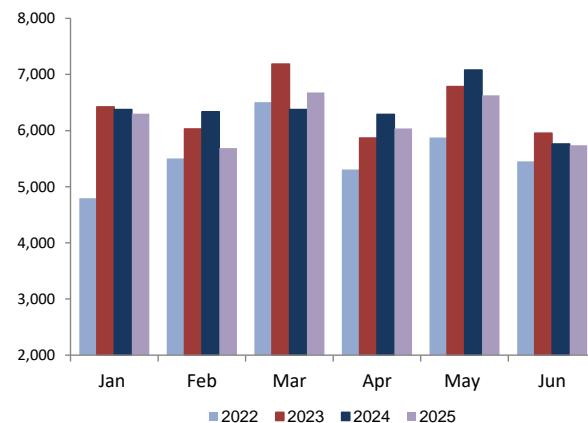
### Total SCR Intakes

n = 16,467  
June 2025

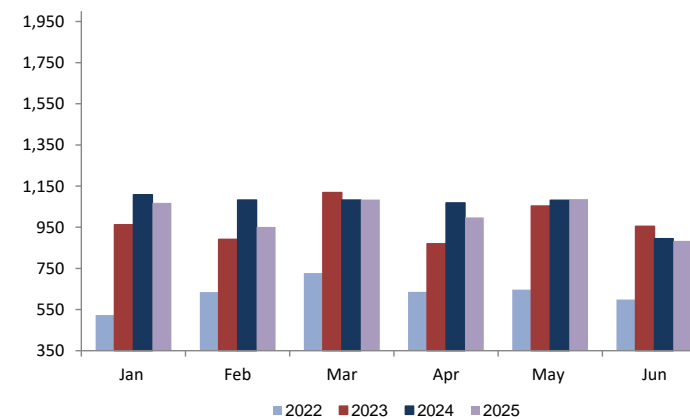


- CPS Reports
- CWS Referrals
- Non CPS/CWS Child Related Calls

### CPS & CWS Referrals

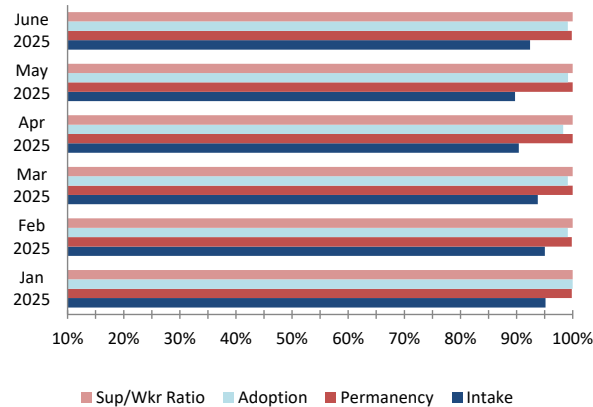


### CWS Referrals Assigned to Local Offices

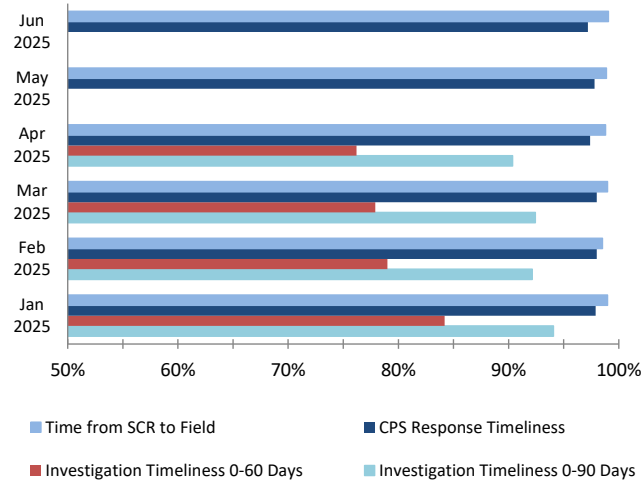


## Section I: Child Protection & Permanency

**Caseload Compliance  
(Individual Worker Level)**

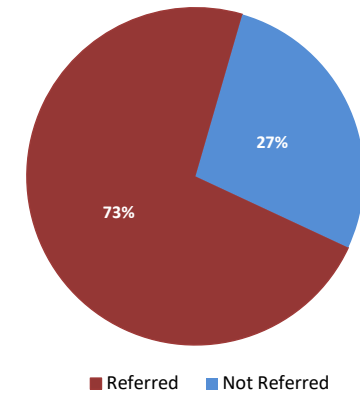


**Response and Investigation Timeliness**

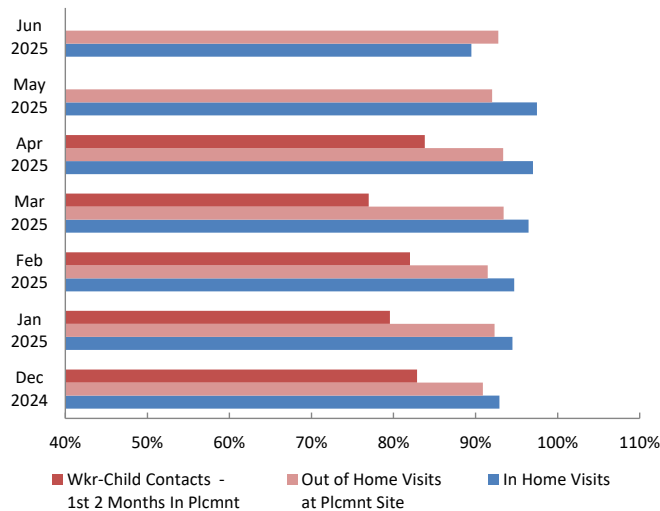


**Referrals to Early Intervention**

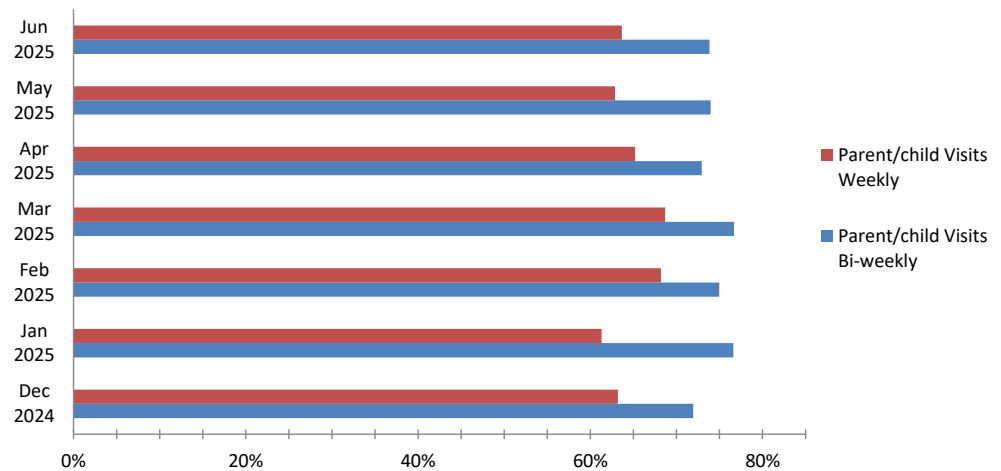
Oct 2024 - Jun 2025  
n = 295



**Worker - Child Visits**

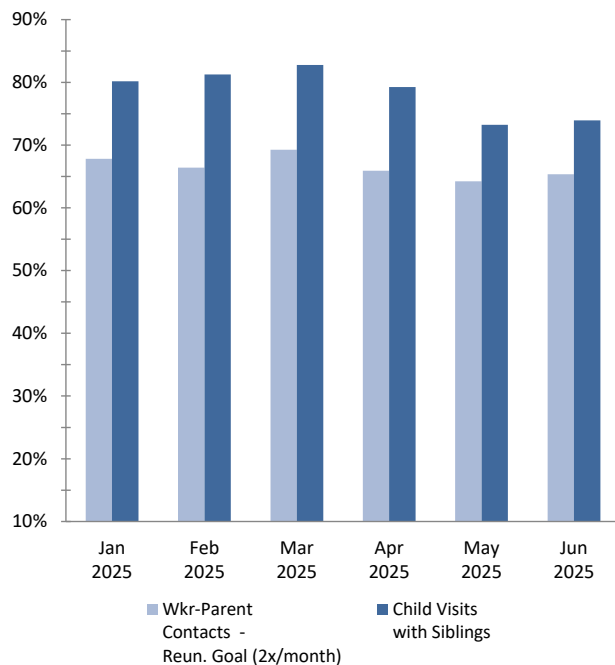


**Parent - Child Visits**

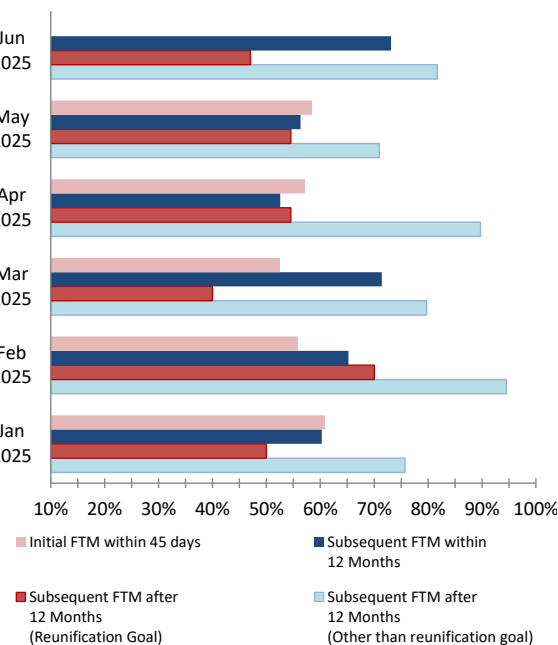


## Section I: Child Protection & Permanency

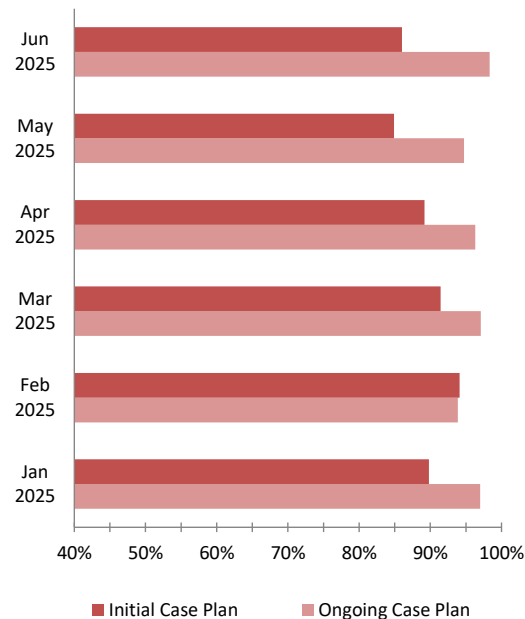
Worker- Parent Visits & Sibling Visits



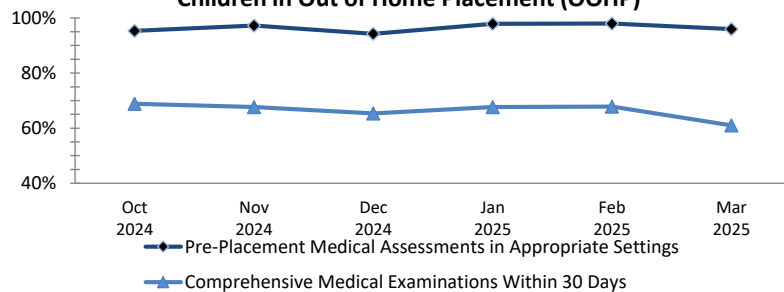
Initial & Subsequent Family Team Meetings



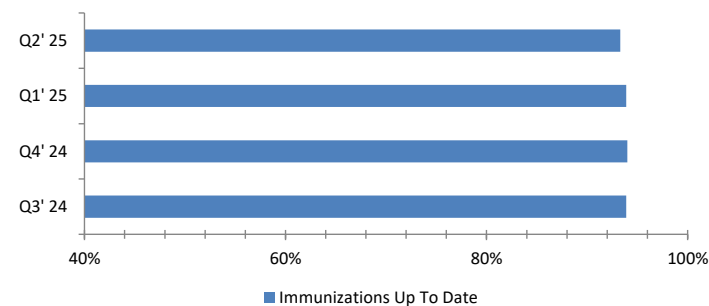
Initial & Ongoing Case Plans



Medical Assessments for  
Children in Out of Home Placement (OOHP)



Immunizations for  
Children in OOHP



## Section II: Adolescent Services

### OAS Quick Facts (June 2025)

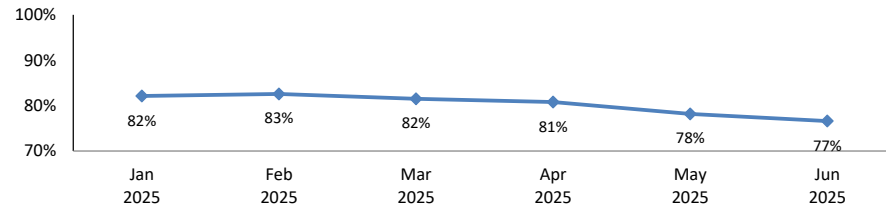
#### Youth 18-23

<b>Youth 18-23 years old served by CP&amp;P<sup>1</sup></b>	<b>1,836</b>
<b>Youth served "In Home" living with a parent/relative or living independently<sup>2</sup></b>	<b>1,632</b>
<b>Youth served "Out-of-Home"</b>	
Resource Family (non-Kin) (36.3%)	74
Resource Family Kinship (21.1%)	43
Congregate Care Setting (25.5%)	52
Independent Living (17.2%)	35
<b>Youth Receiving Adoption or KLG Subsidy</b>	<b>1,000</b>

<sup>1</sup> The data includes all 18-21 year olds who are active participants in an open CP&P case as of the end of the month.

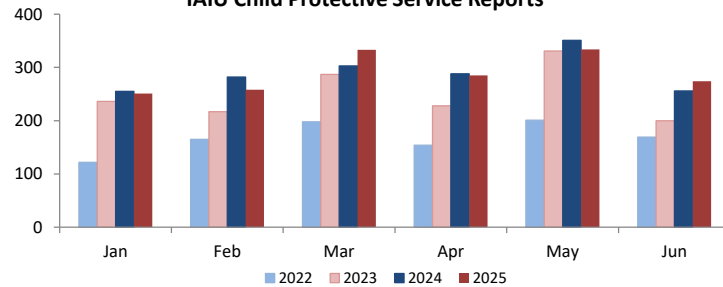
<sup>2</sup> The terms "out-of-home" and "in-home" may not be appropriate for all 18-21 year olds. Youth identified as "in-home" can either be residing with a parent/relative, or living independently. Any of these youth may be receiving services. These definitions are currently being reviewed to better understand how we capture DCF's work with this population. The goal of this ongoing work is to create three meaningful categories for 18-21 year olds 1) Youth in a formal out-of-home placement setting, 2) Youth that achieved permanency, and 3) Youth that never achieved permanency.

### Completed Independent Living Assessments of Youth Ages 14-18 years

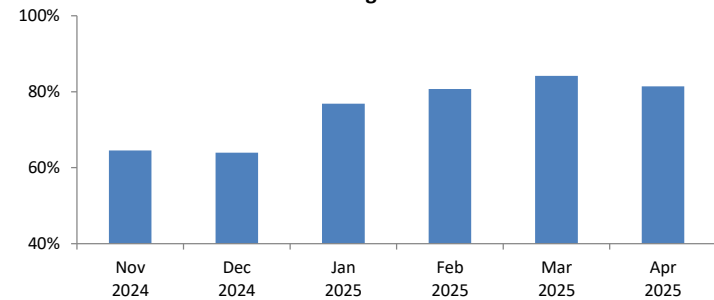


## Section III: Institutional Abuse Investigation Unit

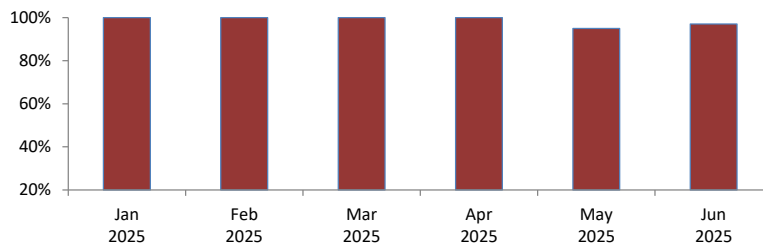
### IAIU Child Protective Service Reports



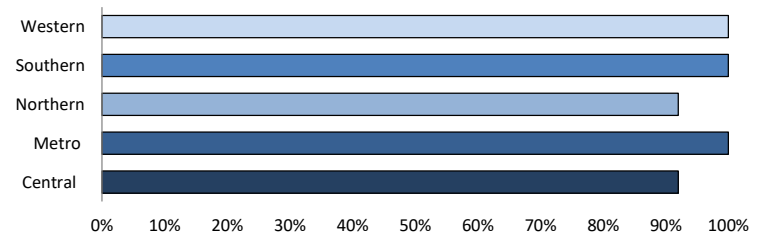
### IAIU Investigation Timeliness



### IAIU Caseload Report Statewide



### IAIU Caseload Report by Region June 2025

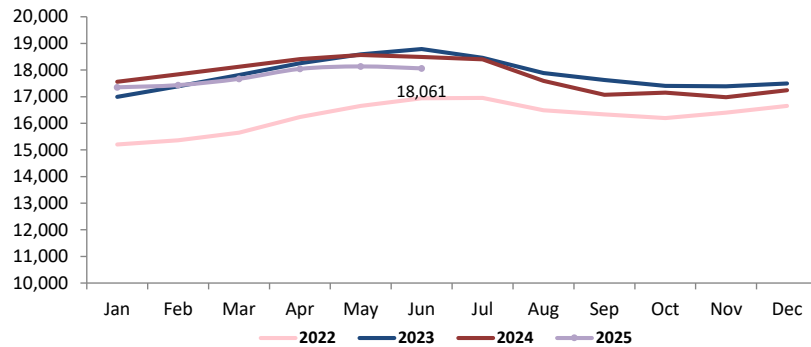




## Section IV: Children's System of Care

**Children in Care Management**

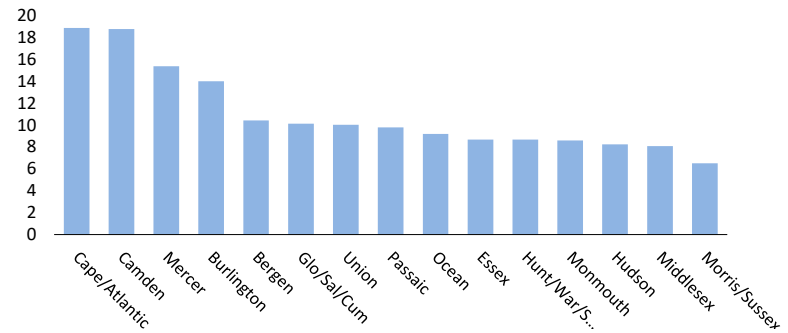
as of June 30<sup>th</sup> 2025



**Rate of Children in Care Management by Service Area**

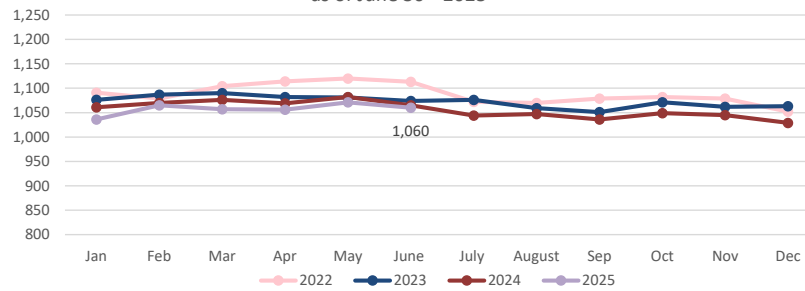
as of June 30<sup>th</sup> 2025

n=18,061



**Children in Out of Home Treatment Settings**

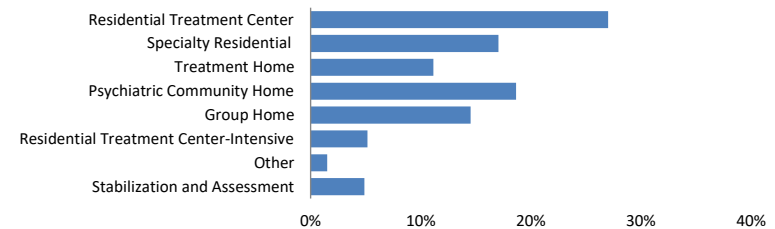
as of June 30<sup>th</sup> 2025



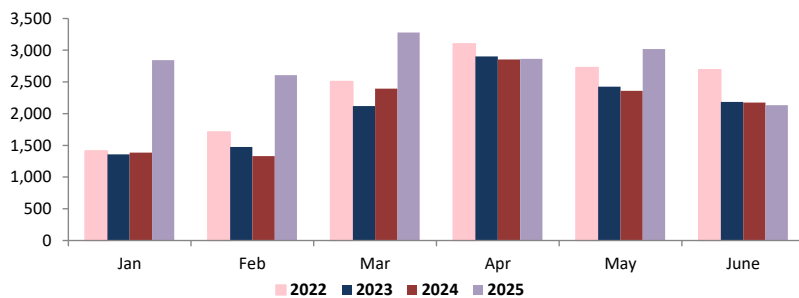
**Children in Out-of-Home Treatment Settings**

as of June 30<sup>th</sup> 2025

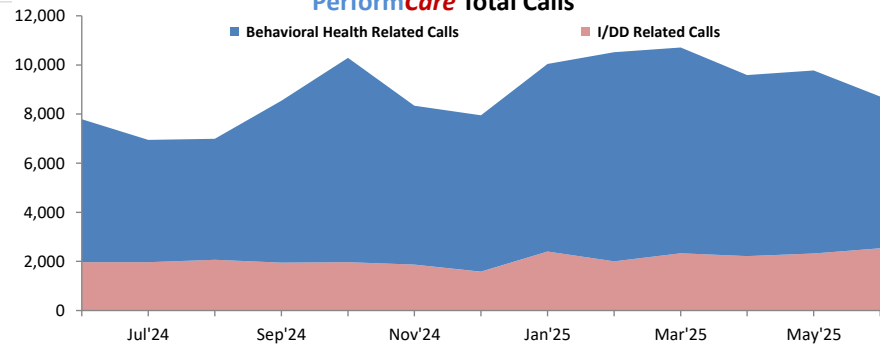
n= 1,060



**Mobile Response Stabilization Services (MRSS) Dispatched**

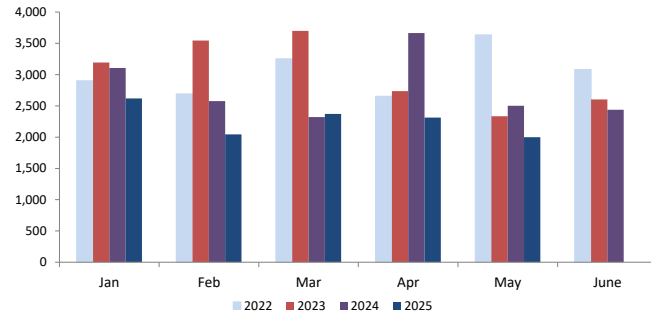


**PerformCare Total Calls**

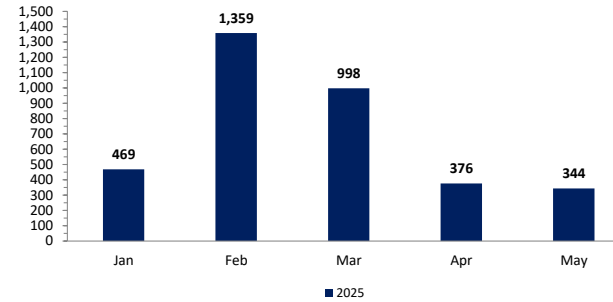


## Section V: Family & Community Partnerships

Family Success Centers - Families Served

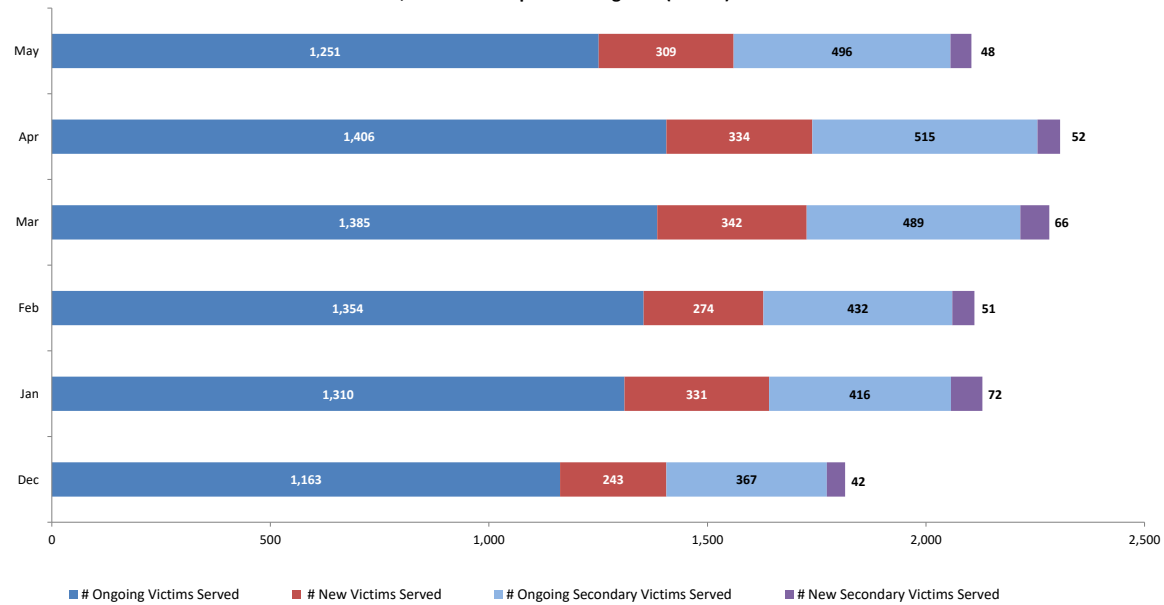


School-Based Youth Services Programs -  
Individuals Receiving Evidence-Based Prevention Services



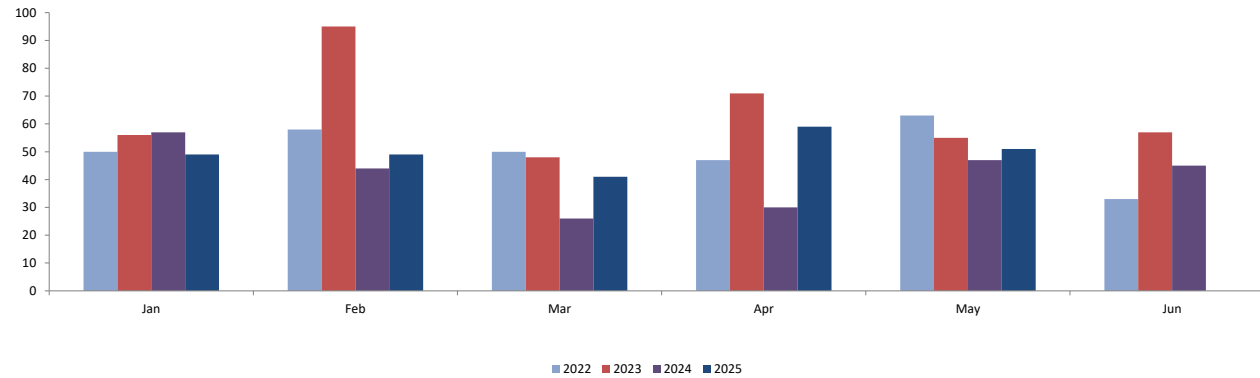
## Section VI: Division on Women

Sexual Assault, Abuse and Rape Care Programs (SAARC)

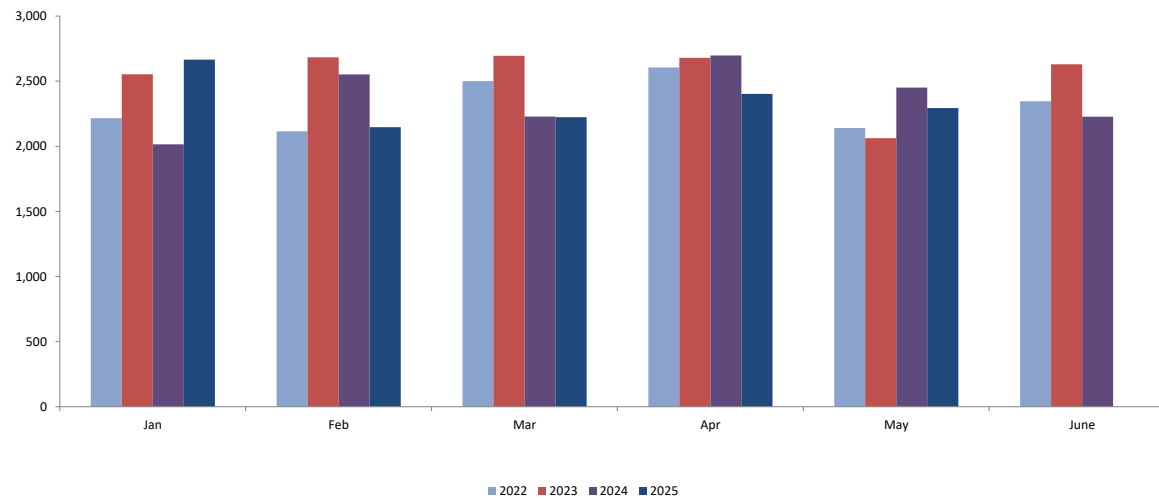


## Section VI: Division on Women

**Residential Domestic Violence Programs:  
Victims' Average Length of Stay (days)**



**Domestic Violence Services - Adults and Children  
Admitted to Residential and Non-Residential Services  
Total New Clients**



## Worker and Office Caseloads by Worker Type and by Local Office - June 2025

	<div><div></div> At or Above Statewide Performance</div>		<div><div></div> Below Statewide Performance</div>			
Local Office	<sup>1</sup> Intake		<sup>2</sup> Permanency		<sup>3</sup> Adoption	
	Worker Compliance	Office Compliant? Yes/No	Worker Compliance	Office Compliant? Yes/No	Worker Compliance	Office Compliant? Yes/No
Atlantic East	100%	Yes	100%	Yes	100%	Yes
Atlantic West	95%	Yes	100%	Yes	100%	Yes
Bergen Central	100%	Yes	100%	Yes	100%	Yes
Bergen South	100%	Yes	100%	Yes	100%	Yes
Burlington East	100%	Yes	100%	Yes	100%	Yes
Burlington West	85%	No	100%	Yes	50%	No
Camden Central	91%	Yes	94%	No	100%	Yes
Camden East	77%	No	100%	Yes	100%	Yes
Camden North	92%	Yes	100%	Yes	100%	Yes
Camden South	81%	No	100%	Yes	100%	Yes
Cape May	93%	Yes	100%	Yes	100%	Yes
Cumberland East	87%	No	100%	Yes	100%	Yes
Cumberland West	80%	No	100%	Yes	100%	Yes
Essex Central	95%	Yes	100%	Yes	100%	Yes
Essex North	71%	No	100%	Yes	100%	Yes
Essex South	75%	No	100%	Yes	100%	Yes
Gloucester East	100%	Yes	100%	Yes	100%	Yes
Gloucester West	84%	No	100%	Yes	100%	Yes
Hudson Central	94%	Yes	100%	Yes	100%	Yes
Hudson North	100%	Yes	100%	Yes	100%	Yes
Hudson South	100%	Yes	100%	Yes	100%	Yes
Hudson West	100%	Yes	100%	Yes	100%	Yes
Hunterdon	100%	Yes	100%	Yes	100%	Yes
Mercer North	100%	Yes	100%	Yes	100%	Yes
Mercer South	87%	No	100%	Yes	100%	Yes
Middlesex Central	75%	No	100%	Yes	100%	Yes
Middlesex Coastal	100%	Yes	100%	Yes	100%	Yes
Middlesex West	100%	Yes	100%	Yes	100%	Yes
Monmouth North	100%	Yes	100%	Yes	100%	Yes
Monmouth South	100%	Yes	100%	Yes	100%	Yes
Morris East	93%	Yes	100%	Yes	100%	Yes
Morris West	100%	Yes	100%	Yes	100%	Yes
Newark Center City	84%	No	100%	Yes	100%	Yes
Newark Northeast	100%	Yes	100%	Yes	100%	Yes
Newark South	76%	No	100%	Yes	100%	Yes
Ocean North	92%	Yes	100%	Yes	100%	Yes
Ocean South	97%	Yes	100%	Yes	100%	Yes
Passaic Central	88%	No	100%	Yes	100%	Yes
Passaic North	89%	No	100%	Yes	100%	Yes
Salem	83%	No	100%	Yes	100%	Yes
Somerset	100%	Yes	100%	Yes	100%	Yes
Sussex	100%	Yes	100%	Yes	100%	Yes
Union Central	100%	Yes	100%	Yes	100%	Yes
Union East	100%	Yes	100%	Yes	100%	Yes
Union West	100%	Yes	100%	Yes	100%	Yes
Warren	61%	No	100%	Yes	99%	Yes
Statewide <sup>4</sup>	92%	Yes	100%	Yes	99%	Yes

### 1 Intake

- Intake worker compliance: % of workers with no more than 8 new intakes in the month, no more than 12 Primary families and no more than a total of 14 families.

- Office Compliance: % of offices that meet the caseload standards of no more than 8 new intakes and 12 total families.

### 2 Permanency

- Permanency worker compliance: % of workers who meet the caseload standards of no more than 15 families and 10 children in placement.

- Office Compliance: % of offices that meet the caseload standards of no more than 15 families and 10 children in placement.

### 3 Adoption

- Adoption worker compliance: % of adoption workers who meet the caseload standards of 15 or fewer children.

- Office Compliance: % of offices that meet the caseload standards of 15 or fewer children.

- Offices with blank data do not carry adoption caseloads, however adoption cases in those offices are handled by other offices in that area.

### 4 Statewide

- Performance is based on total workers in compliance for the month, not an average. Percentages are rounded to the whole number.

CP&P Key Performance Indicators by Local Office - 6 Months View														
Local Office	CPS Investigations Completed w/ 60 Days	CPS Investigations Completed w/ 90 Days	Monthly Staff Visits w/Children in Placement	Visits w/Children in Placement 2x/Month for 2 Months	Visits with Parents of Children in Placement 2x/Month	Weekly Parent/Child Visits-Children with Goal of Reunification	Bi-weekly Parent-Child Visits-Children with Goal of Reunification	Monthly Sibling Visits	Initial Case Plans w/ 30 Days of Placement	6 Months Review of Case Plans for Children in Placement	Initial Family Team Meetings w/ 45 days of Placement	3 Family Team Meetings in the first 12 months of Placement	3 Family Team Meetings after 12 months in Placement	2 Family Team Meeting after 12 months in Placement
Atlantic East	89%	95%	91%	85%	53%	61%	73%	67%	100%	100%	70%	50%	75%	75%
Atlantic West	84%	94%	96%	86%	58%	62%	76%	75%	100%	98%	56%	88%	67%	91%
Bergen Central	90%	98%	95%	90%	91%	90%	88%	96%	69%	100%	100%	86%		75%
Bergen South	89%	95%	96%	80%	85%	98%	90%	92%	86%	91%	44%	92%		100%
Burlington East	76%	94%	97%	56%	78%	67%	82%	78%	100%	96%	43%	21%	0%	100%
Burlington West	70%	90%	87%	67%	48%	48%	69%	63%	74%	87%	13%	0%	27%	50%
Camden Central	77%	89%	84%	54%	56%	55%	78%	84%	67%	87%	7%	35%	78%	75%
Camden East	64%	86%	90%	94%	74%	74%	84%	98%	93%	76%	47%	73%	50%	92%
Camden North	65%	85%	93%	77%	72%	68%	83%	96%	95%	100%	70%	67%	40%	100%
Camden South	75%	97%	92%	88%	78%	62%	79%	84%	81%	95%	55%	80%	0%	100%
Cape May	82%	91%	96%	100%	64%	47%	61%	77%	88%	100%	71%	100%	100%	100%
Cumberland East	71%	91%	92%	100%	84%	94%	90%	93%	100%	100%	100%			100%
Cumberland West	67%	91%	97%	96%	78%	70%	84%	92%	100%	100%	100%	100%	100%	100%
Essex Central	82%	95%	94%	69%	62%	35%	68%	79%	100%	98%	22%	56%	100%	45%
Essex North	74%	89%	95%	100%	53%	14%	32%	86%	100%	100%	20%	25%	0%	86%
Essex South	79%	89%	94%	64%	33%	18%	40%	79%	100%	96%	64%	45%	0%	23%
Gloucester East	95%	97%	92%	84%	49%	66%	73%	90%	93%	98%	21%	55%		100%
Gloucester West	67%	84%	97%	95%	84%	67%	83%	75%	78%	100%	44%	88%	33%	80%
Hudson Central	65%	86%	98%	92%	82%	66%	82%	57%	100%	91%	70%	56%	33%	100%
Hudson North	79%	96%	97%	100%	73%	100%	85%	81%	100%	100%	80%	100%		100%
Hudson South	82%	93%	99%	100%	75%	49%	77%	86%	100%	100%	27%	86%	0%	83%
Hudson West	88%	96%	96%	79%	76%	37%	69%	63%	88%	74%	33%	29%	100%	67%
Hunterdon	90%	99%	97%	100%	84%	81%	88%	86%	100%	100%	17%	0%		100%
Mercer North	68%	88%	87%	62%	59%	37%	64%	52%	71%	88%	20%	36%	50%	42%
Mercer South	82%	94%	92%	68%	64%	63%	81%	76%	75%	83%	12%	43%	50%	77%
Middlesex Central	67%	89%	94%	93%	69%	72%	82%	79%	70%	100%	77%	55%		83%
Middlesex Coastal	80%	94%	92%	70%	84%	79%	78%	57%	92%	100%	85%	56%	100%	43%
Middlesex West	76%	92%	96%	93%	60%	67%	86%	63%	83%	100%	60%	92%	0%	100%
Monmouth North	97%	99%	98%	73%	86%	86%	91%	95%	100%	98%	97%	31%	100%	79%
Monmouth South	89%	98%	97%	87%	73%	73%	82%	85%	96%	100%	60%	92%	100%	100%
Morris East	75%	92%	94%	100%	96%	100%	89%	90%	100%	100%	100%	100%		100%
Morris West	84%	96%	97%	100%	99%	100%	85%	91%	100%	100%	100%	100%		100%
Newark Center City	72%	90%	99%	95%	86%	43%	57%	93%	84%	100%	47%	100%	80%	100%
Newark Northeast	70%	84%	83%	63%	17%	58%	64%	73%	100%	99%	0%	11%	0%	53%
Newark South	66%	81%	96%	89%	67%	53%	74%	93%	73%	100%	60%	64%	100%	100%
Ocean North	89%	95%	99%	72%	82%	79%	84%	81%	100%	97%	81%	54%	0%	100%
Ocean South	92%	97%	95%	93%	78%	73%	89%	74%	100%	99%	76%	100%	100%	100%
Passaic Central	86%	96%	96%	95%	86%	99%	88%	99%	100%	100%	100%	100%	100%	100%
Passaic North	93%	97%	93%	100%	97%	100%	90%	90%	100%	100%	100%	100%		100%
Salem	60%	87%	92%	93%	69%	81%	87%	89%	100%	100%	100%	100%		100%
Somerset	73%	91%	95%	92%	62%	83%	78%	76%	100%	100%	63%	20%	0%	33%
Sussex	90%	99%	98%	100%	96%	100%	83%	100%	100%	100%	100%	100%		100%
Union Central	76%	92%	95%	80%	55%	90%	89%	94%	90%	100%	100%	80%	0%	100%
Union East	91%	97%	99%	100%	84%	99%	81%	92%	100%	100%	100%	80%	100%	78%
Union West	74%	95%	94%	87%	45%	59%	55%	66%	80%	97%	86%	67%	100%	88%
Warren	51%	74%	83%	69%	72%	62%	76%	76%	81%	95%	19%	20%		54%
Statewide	79%	93%	93%	82%	67%	64%	77%	79%	91%	96%	57%	63%	52%	82%
Blank cells mean that the office did not have any children eligible for that measure during that period.														
These data points are preliminary and subject to change based on user data entry.														
Description of the Measure											Time Period Analyzed			
CPS Investigations Completed w/ 60 Days											November 24 - April 25			
CPS Investigations Completed w/ 90 Days											November 24 - April 25			
Monthly Staff Visits w/Children in Placement											January 25 - June 25			
Visits w/Children in Placement 2x/Month for 2 Months											November 24 - April 25			
Visits with Parents of Children in Placement 2x/Month											January 25 - June 25			
Weekly Parent/Child Visits-Children with Goal of Reunification											05/24/2025 - 06/28/2025			
Bi-weekly Parent-Child Visits-Children with Goal of Reunification											January 25 - June 25			
Monthly Sibling Visits											January - June 25			
Initial Case Plans w/ 30 Days of Placement											January 25 - June 25			
6 Months Review of Case Plans for Children in Placement											January 25 - June 25			
Initial Family Team Meetings w/ 45 days of Placement											December 24 - May 25			
3 Family Team Meetings in the first 12 months of Placement											January 25 - June 25			
3 Family Team Meetings after 12 months in Placement											January 25 - June 25			
2 Family Team Meeting after 12 months in Placement											January 25 - June 25			