



Commissioner's Monthly Report September-24

Christine Beyer
Commissioner

Monthly Report

Table of Contents

TABLE OF CONTENTS	2
KEY PERFORMANCE INDICATORS	3
DCF AT A GLANCE - DASHBOARD	4
SECTION I: CHILD PROTECTION & PERMANENCY	5-7
SECTION II: ADOLESCENT SERVICES	8
SECTION III: INSTITUTIONAL ABUSE INVESTIGATION UNIT	8
SECTION IV: CHILDREN'S SYSTEM OF CARE	9
SECTION V: FAMILY & COMMUNITY PARTNERSHIPS	10
SECTION VI: DIVISION ON WOMEN	10-11
ADDENDUM 1: CASELOADS	12
ADDENDUM 2: CP&P KEY PERFORMANCE INDICATORS BY LOCAL OFFICE	13

¹Key Performance Indicators
On or About July 31st, 2024

	Observed Month	Rolling 12 Month Average	Performance	% Difference
Investigation Timeliness CP&P 60 Days	May '24	83%	82%	-1%
Investigation Timeliness CP&P 90 Days	May '24	94%	94%	0%
CW Visits Child 2x/Month for first 2 Months in Placement	May '24	84%	87%	3%
CW Visits Child Monthly (at placement site) ³	July '24	93%	92%	-1%
CW Visits with Parent 2x/Month - Goal of Reunification	July '24	63%	71%	8%
Parent-Child Weekly Visit ²	July '24	67%	66%	-1%
Parent-Child Visits Bi-weekly	July '24	67%	74%	7%
Child Visit with Siblings	July '24	86%	81%	-5%
Initial Case Plans	July '24	89%	93%	4%
Ongoing Case Plans	July '24	96%	95%	-1%
Initial FTMs within 45 days	June '24	65%	56%	-9%
Subsequent FTMs within 12 Months	July '24	73%	57%	-16%
Subsequent FTMs after 12 Months - Reunification Goal (n=16)	July '24	71%	50%	-21%
Subsequent FTMs after 12 Months - Other than Reunification Goal	July '24	85%	80%	-5%
Ind. Living Assessments 14-18 Years Old	July '24	81%	84%	3%
Caseloads: Intake	July '24	90%	97%	7%
Caseloads: Permanency	July '24	100%	100%	0%
Caseloads: Adoption	July '24	99%	98%	-1%
Supervisor Worker Ratio	July '24	100%	100%	0%
Investigation Timeliness IAIU 60 Days	July '24	74%	72%	-2%
Caseloads: IAIU Investigators	July '24	99%	100%	1%
<div> <div></div> Performance is similar to or above the 12 months rolling average </div> <div> <div></div> Performance is below the 12 months rolling average </div>				

¹ In certain measures, performance excludes appropriate instances as per policy where events such as visits or family team meetings did not occur.

² Performance for Parent-Child Weekly Visits is calculated based on the average number of children with weekly visits over the average total number of eligible children for weekly visits.

³ Caseworker visits with Children in Placement (all locations) **July 2024: 96%.**



DCF At A Glance Dashboard

On or About July 31st, 2024

DCF At A Glance		CSOC ⁴ Quick Facts	
DCF: Total Children Served in the Month ¹	69,887	Youth Open with CSOC ⁵ (unduplicated count)	39,211
CP&P: Children/Youth Served	30,676	DD Eligible Children (unduplicated count)	13,815
Children Under 18	28,710	MRSS: Dispatches in the month	1,387
OOH Setting (<18)	2,859	MRSS: Interventions ⁶ (March 2024)	2,681
In-Home Setting (<18)	25,851	Remained in Same Living Situation	96%
Youth 18-21	1,966	Unable to Stabilize in home	1%
OOH Setting (>18)	207	Unknown (Plan not received)	3%
In-Home Setting (>18)	1,759	Care Management: Children Served	17,595
FCP: Total Clients Served ² (June)	5,760	OOH Settings : Children Served ⁷ (BH, I/DD, and SU)	1,044
DOW: Total Clients Served (June) (Excludes Displaced Homemaker)	3,862	Behavioral Health Placed out of State	0
DCF: Families Served in the Month ³	21,284	Intellectual /Developmental Disabilities Placed out of State	33
CP&P	15,561	PerformCare Calls	6,951
FCP (Family Success Centers & Home Visiting) (June)	5,723	DD Related Calls	1,912

CP&P Quick Facts		FCP & DoW Quick Facts ⁹	
Hotline Referrals	12,329	FSCs: Families Served (June 2024)	2,439
CPS Reports	35%	Home Visiting: Families Served (June 2024)	3,284
CWS Referrals	7%	SBYSP: Students Receiving Evidence-Based Prevention Programs (June 2024)	37
Number of Human Trafficking Referrals ⁸ (July 2024)	7		
Response Timeliness	98%	DV Services: Clients Served (June 2024)	2,227
Monthly Staff Contacts/Children OOH-Placement Site	92%	Residential	12%
Entries to Care	145	Non-Residential	88%
Exits from Care	109		
Subsidized Adoptions/KLG (Includes Subsidized Adoptions and subsidized KLGs)	12,093	SAARC: Clients Served (June 2024)	1,635

¹ Some children may be served by both CP&P and CSOC and are over-represented in the final count of children served in the month.

² FCP measures clients served in SBYSP and DV Services. Since Family Success Centers and Home Visitation programs report data in terms of families served, each family is assumed to have at least one client.

³ Families served by DCF includes CP&P families and FCP families. FCP families served data has a one month lag.

⁴ CSOC Children may receive multiple services and are counted multiple times.

⁵ The definition for "Youth Open with CSOC" reflects youth who are involved and eligible to receive services through CSOC.

⁶ Mobile Response Interventions has a five month lag to allow for the data to settle for accurate reporting.

⁷ As of October 2022, the CSOC OOH sections will now include all CSOC Out of Home Treatment Settings (Behavioral Health, Intellectual/Developmentally Disabled, and Substance Use). This includes updating the totals reported, a new 3-year OOH trend report, and a monthly OOH report grouped by similar treatment settings.

⁸ The cumulative number of human trafficking referrals between **November 2013 and July 2024 was 1,433**. This figure could change depending on when the data is extracted.

⁹ FCP quick facts are based on new families for FSCs, but both new and ongoing clients for Home Visiting and SBYSP. DoW quick facts are based on new clients for DV Services, but both new and ongoing clients served for SAARC, Displaced Homemakers and Rape Prevention Education.

Note: OOH Behavioral Health Settings: Children Served - Excludes Youth in Detention Alternatives and Diagnostic Settings.

Effective June 2017, All DoW data is reported Monthly except for Residential DV shelters and Unmet Needs Data.

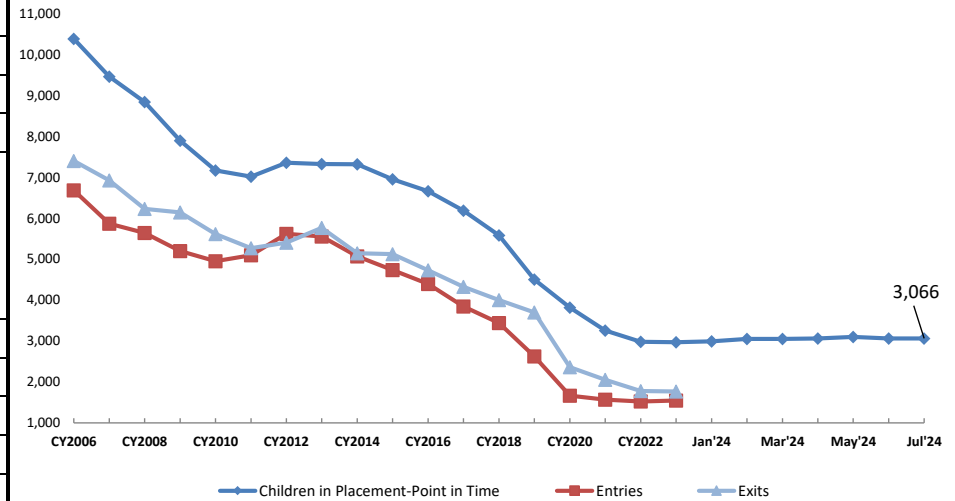
Note: Due to system upgrades within DCF, Displaced Homemaker data will not be available beginning November 2021. DCF will resume reporting on these data after the new systems have been updated with these data.

Section I: Child Protection & Permanency

CP&P Quick Facts

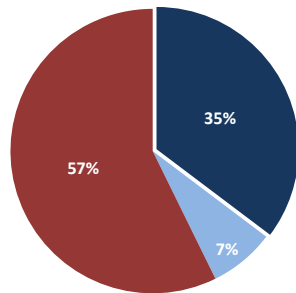
	As of July 31st 2024	Δ from Jul '23
Families Under CP&P Supervision	15,561	9%
Children Under CP&P Supervision	30,676	10%
Children Receiving CP&P In-Home Services	27,610	11%
Children in CP&P Out-of-Home Placement		
Resource Family (non-Kin)	41% 1,259	3,066 1%
Resource Family Kinship	47% 1,443	
Group and Residential	10% 312	
Independent Living	2% 52	
Children Legally Free for Adoption (Excludes TPR Appeals)	451	-7%
Finalized Adoptions to date (CY2024) - As of 7/31/2024	185	-9%
Children in Subsidized Kinship Legal Guardianship	1,234	-1%
Children in Subsidized Adoptions	10,859	-7%
Entries to Care	145	6%
Exits from Care	109	-4%

Children in Out-of-Home Placement:
Annual Entries, Exits and Monthly Point in Time Children in Placement



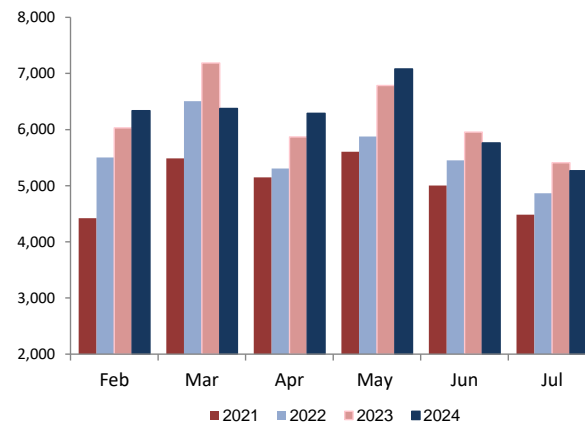
Total SCR Intakes

n = 12,329
July 2024

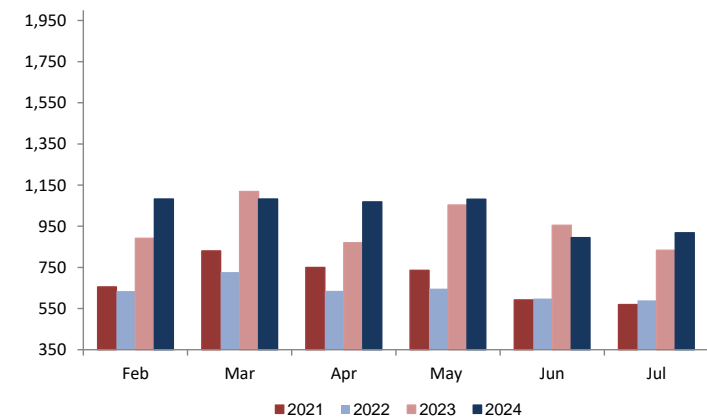


- CPS Reports
- CWS Referrals
- Non CPS/CWS Child Related Calls

CPS & CWS Referrals

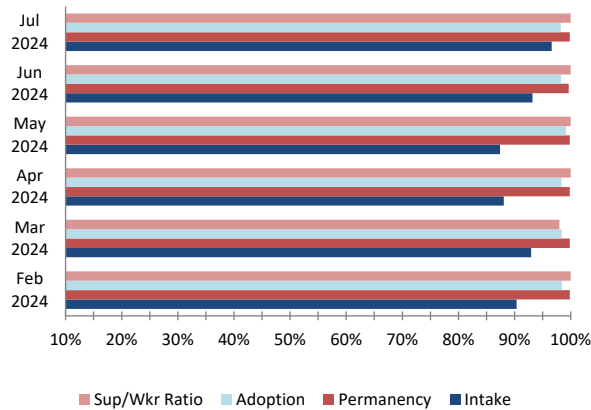


CWS Referrals Assigned to Local Offices

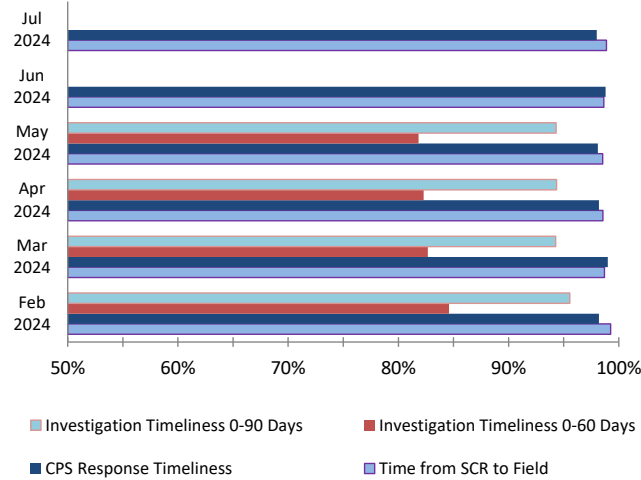


Section I: Child Protection & Permanency

**Caseload Compliance
(Individual Worker Level)**

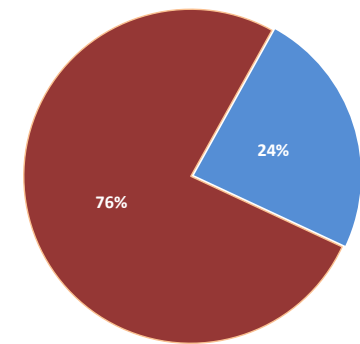


Response and Investigation Timeliness

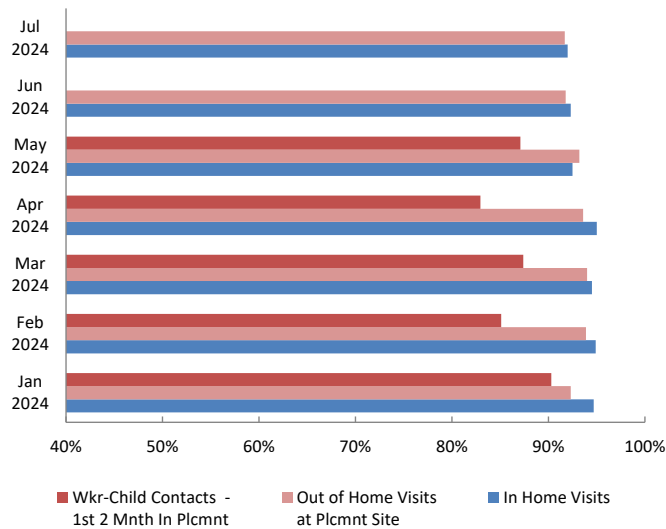


Referrals to Early Intervention

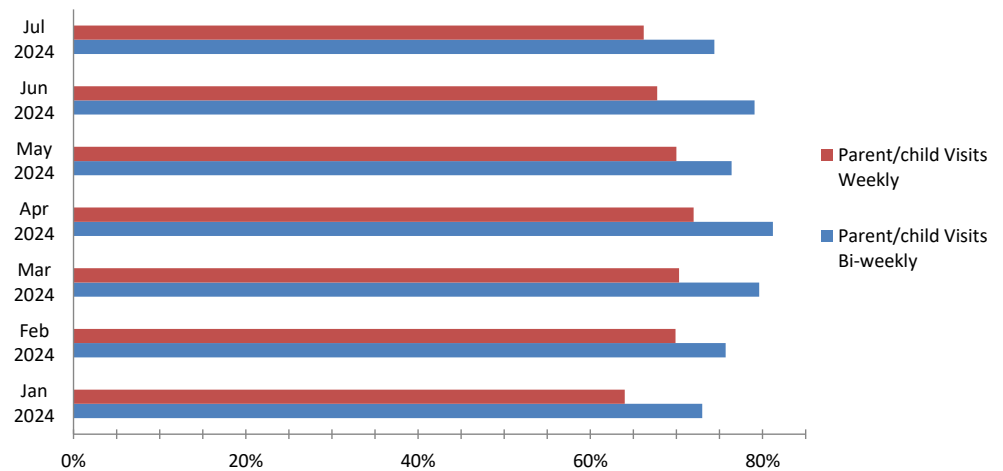
Oct 2023 - Jul 2024
n = 486



Worker - Child Visits

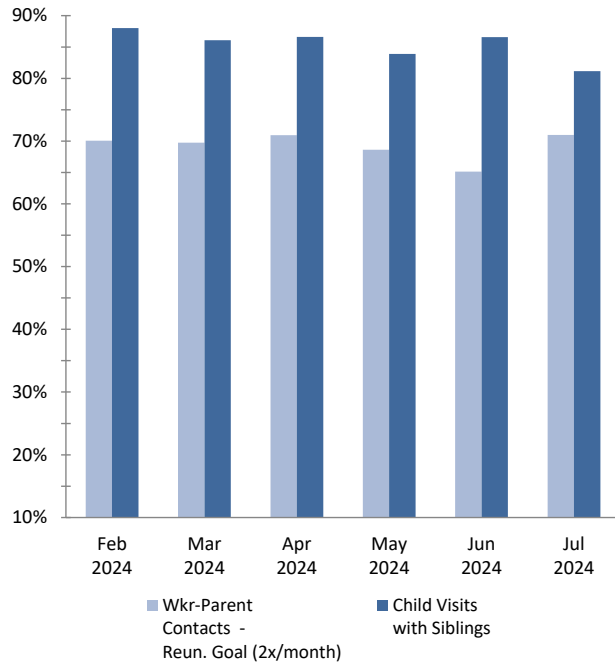


Parent - Child Visits

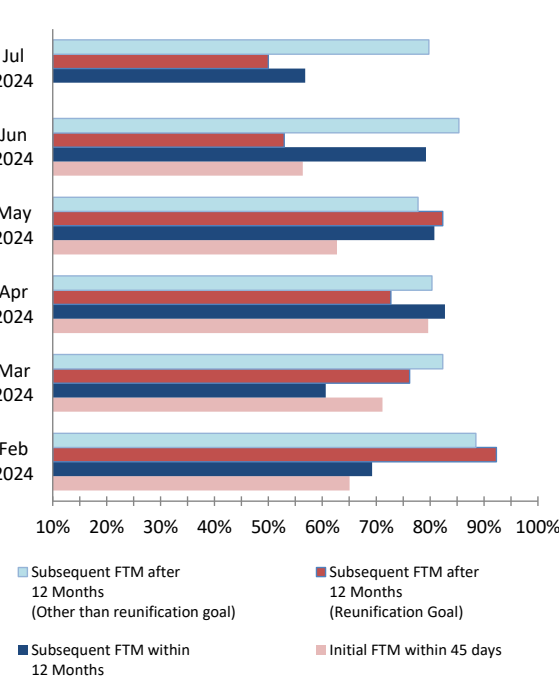


Section I: Child Protection & Permanency

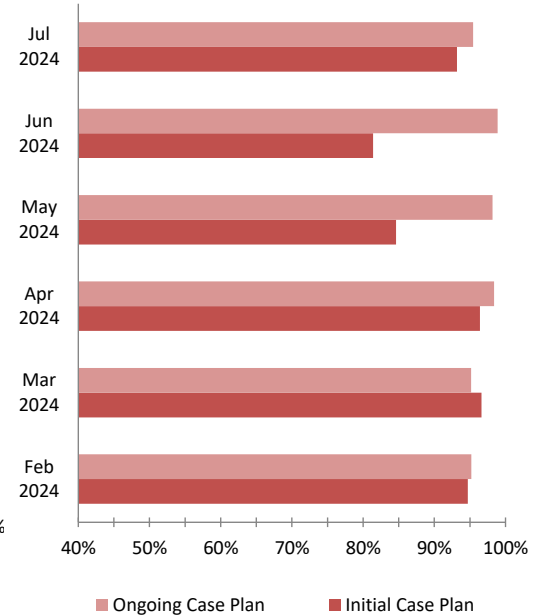
Worker- Parent Visits & Sibling Visits



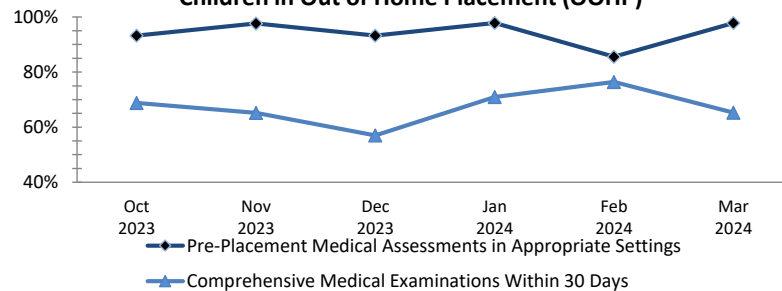
Initial & Subsequent Family Team Meetings



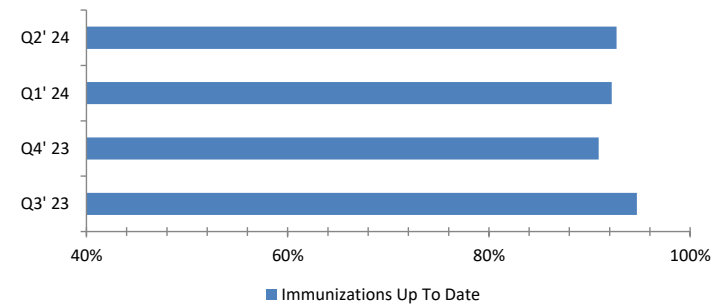
Initial & Ongoing Case Plans



Medical Assessments for Children in Out of Home Placement (OOHP)



Immunizations for Children in OOHP



Section II: Adolescent Services

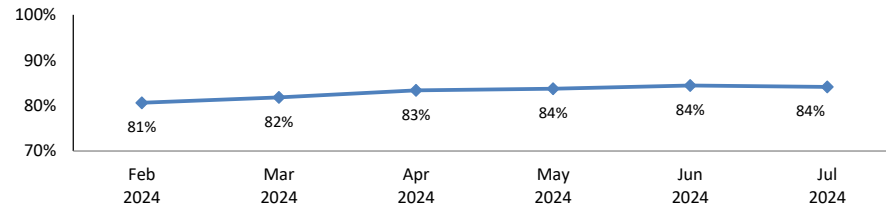
OAS Quick Facts (July 2024)
Youth 18-23

Youth 18-23 years old served by CP&P¹	1,966
Youth served "In Home" living with a parent/relative or living independently²	1,759
Youth served "Out-of-Home"	
Resource Family (non-Kin)	(37.7%) 78
Resource Family Kinship	(14.5%) 30
Congregate Care Setting	(26.1%) 54
Independent Living	(21.7%) 45
Youth Receiving Adoption or KLG Subsidy	475

¹ The data includes all 18-21 year olds who are active participants in an open CP&P case as of the end of the month.

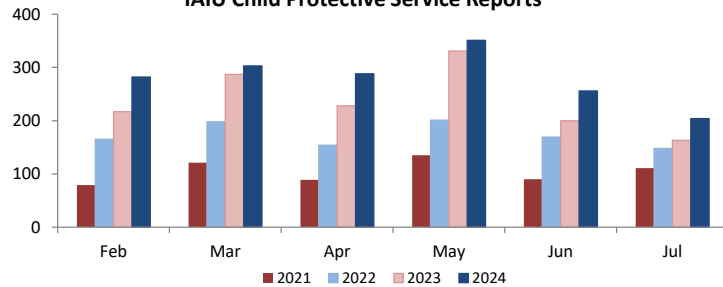
² The terms "out-of-home" and "in-home" may not be appropriate for all 18-21 year olds. Youth identified as "in-home" can either be residing with a parent/relative, or living independently. Any of these youth may be receiving services. These definitions are currently being reviewed to better understand how we capture DCF's work with this population. The goal of this ongoing work is to create three meaningful categories for 18-21 year olds 1) Youth in a formal out-of-home placement setting, 2) Youth that achieved permanency, and 3) Youth that never achieved permanency.

Completed Independent Living Assessments
of Youth Ages 14-18 years



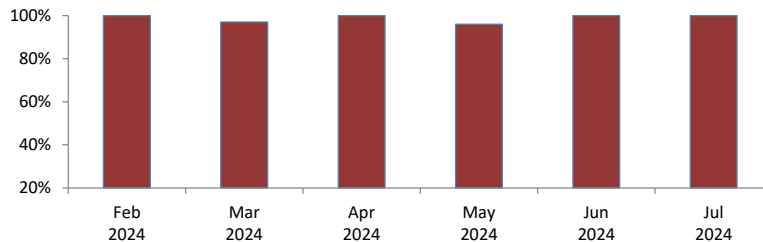
Section III: Institutional Abuse Investigation Unit

IAIU Child Protective Service Reports

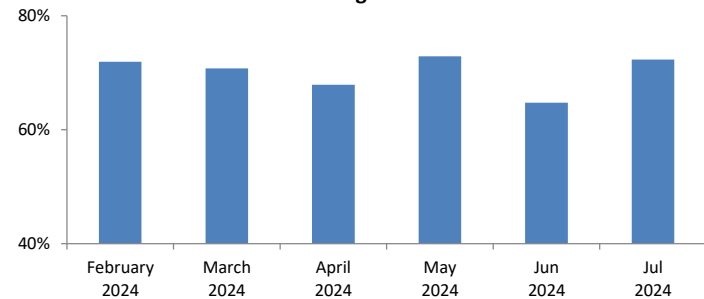


IAIU Caseload Report
Statewide

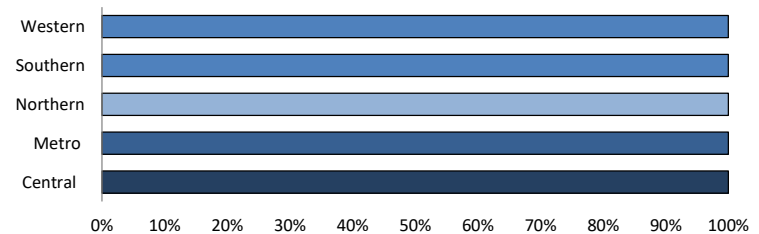
No more than 8 new investigations and 12 cases/month



IAIU Investigation Timeliness



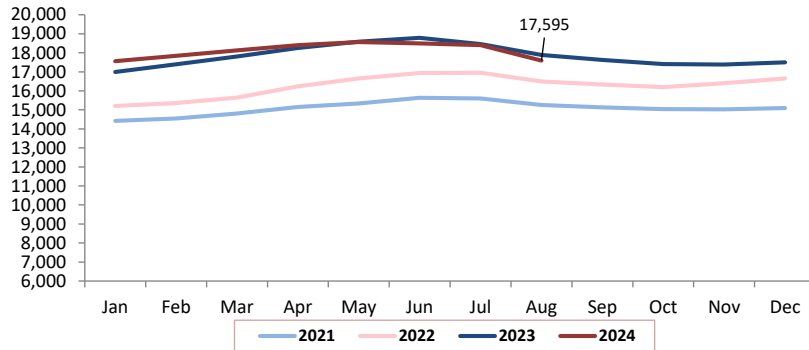
IAIU Caseload Report by Region
July 2024



Section IV: Children's System of Care

Children in Care Management

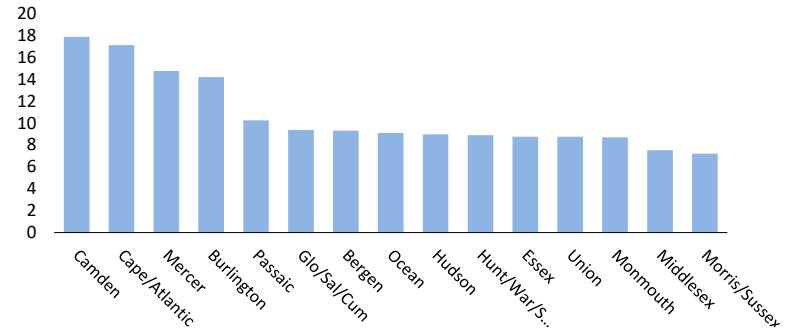
as of August 1st 2024



Rate of Children in Care Management by Service Area

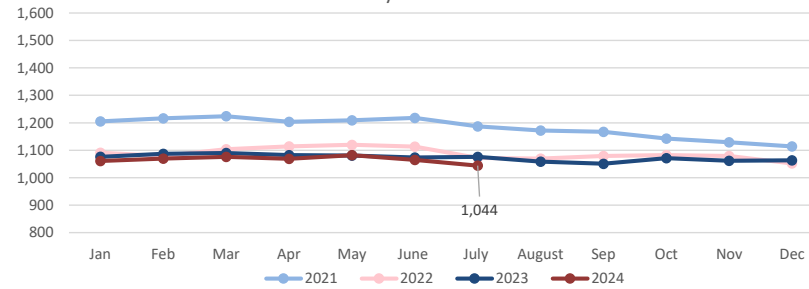
as of August 1st 2024

n=17,595



Children in Out of Home Treatment Settings

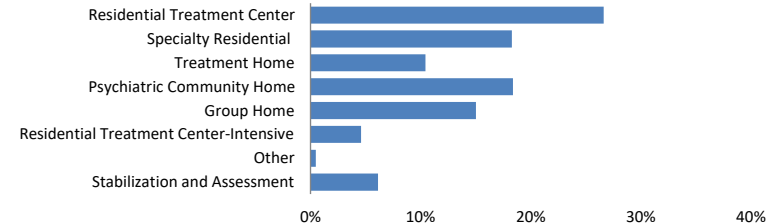
as of July 31st 2024



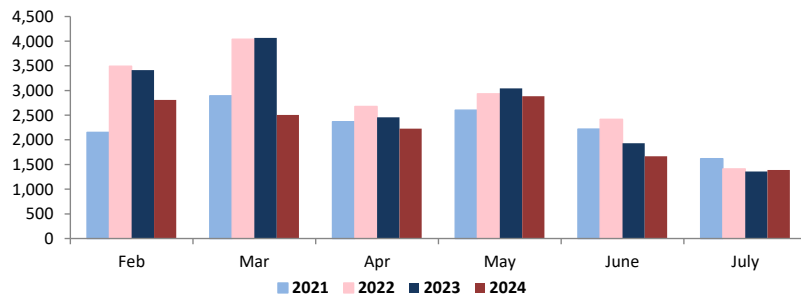
Children in Out-of-Home Treatment Settings

as of July 31st 2024

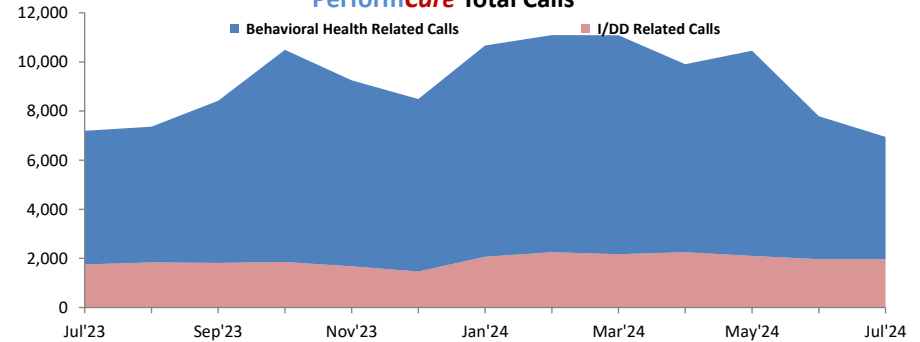
n= 1,044



Mobile Response Stabilization Services (MRSS) Dispatched

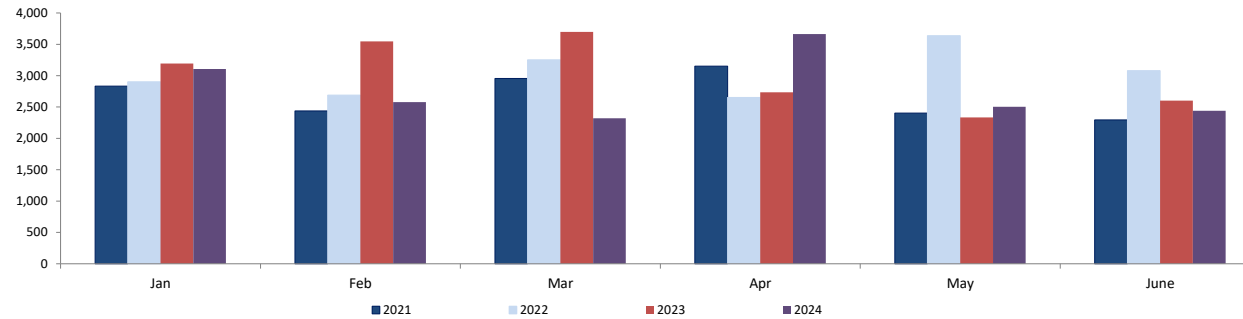


PerformCare Total Calls



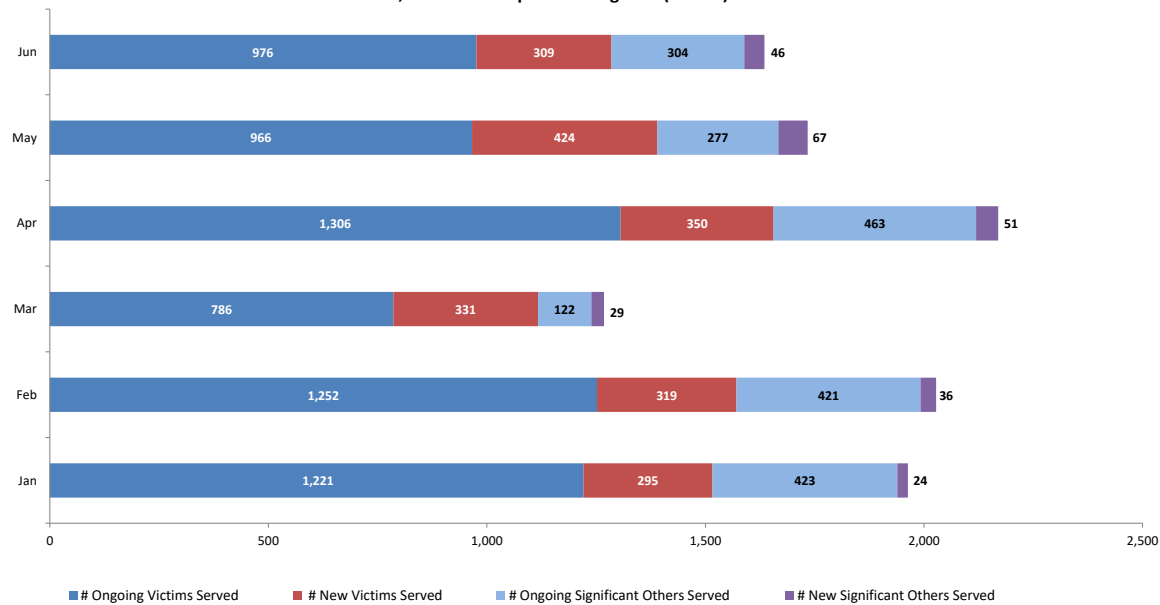
Section V: Family & Community Partnerships

Family Success Centers - Families Served



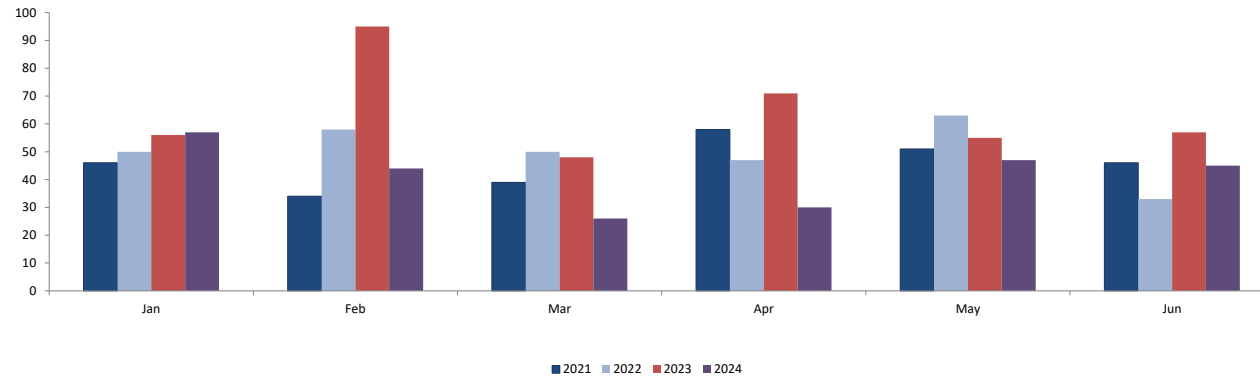
Section VI: Division on Women

Sexual Assault, Abuse and Rape Care Programs (SAARC)

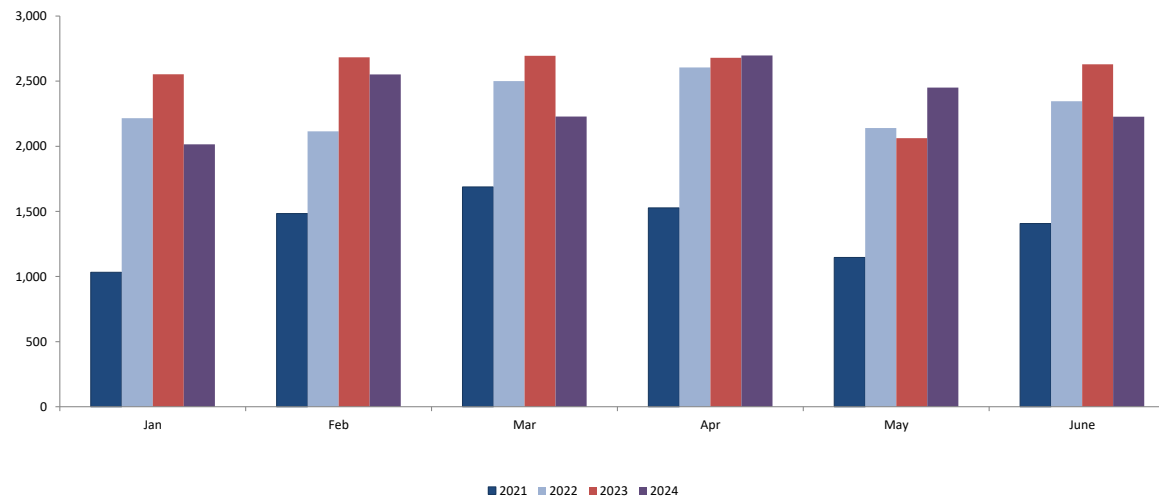


Section VI: Division on Women

**Residential Domestic Violence Programs:
Victims' Average Length of Stay (days)**



**Domestic Violence Services - Adults and Children
Admitted to Residential and Non-Residential Services
Total New Clients**



Worker and Office Caseloads by Worker Type and by Local Office - July 2024

	<div><div></div>At or Above Statewide Performance</div>		<div><div></div>Below Statewide Performance</div>			
Local Office	¹ Intake		² Permanency		³ Adoption	
	Worker Compliance	Office Compliant? Yes/No	Worker Compliance	Office Compliant? Yes/No	Worker Compliance	Office Compliant? Yes/No
Atlantic East	100%	Yes	100%	Yes	100%	Yes
Atlantic West	100%	Yes	100%	Yes	100%	Yes
Bergen Central	100%	Yes	100%	Yes	100%	Yes
Bergen South	100%	Yes	100%	Yes	100%	Yes
Burlington East	100%	Yes	100%	Yes	100%	Yes
Burlington West	90%	Yes	93%	No	100%	Yes
Camden Central	79%	No	100%	Yes	100%	Yes
Camden East	92%	Yes	100%	Yes	100%	Yes
Camden North	100%	Yes	100%	Yes	100%	Yes
Camden South	100%	Yes	100%	Yes	100%	Yes
Cape May	100%	Yes	100%	Yes	100%	Yes
Cumberland East	71%	No	100%	Yes	100%	Yes
Cumberland West	100%	Yes	100%	Yes	100%	Yes
Essex Central	100%	Yes	100%	Yes	100%	Yes
Essex North	90%	Yes	100%	Yes	100%	Yes
Essex South	89%	No	100%	Yes	100%	Yes
Gloucester East	79%	No	100%	Yes	100%	Yes
Gloucester West	100%	Yes	100%	Yes	100%	Yes
Hudson Central	100%	Yes	100%	Yes	100%	Yes
Hudson North	100%	Yes	100%	Yes	100%	Yes
Hudson South	100%	Yes	100%	Yes	100%	Yes
Hudson West	100%	Yes	100%	Yes	100%	Yes
Hunterdon	100%	Yes	100%	Yes	100%	Yes
Mercer North	100%	Yes	100%	Yes	67%	No
Mercer South	100%	Yes	100%	Yes	100%	Yes
Middlesex Central	95%	Yes	100%	Yes	100%	Yes
Middlesex Coastal	100%	Yes	100%	Yes	100%	Yes
Middlesex West	100%	Yes	100%	Yes	100%	Yes
Monmouth North	100%	Yes	100%	Yes	100%	Yes
Monmouth South	100%	Yes	100%	Yes	100%	Yes
Morris East	100%	Yes	100%	Yes	100%	Yes
Morris West	89%	No	100%	Yes	100%	Yes
Newark Center City	100%	Yes	100%	Yes	100%	Yes
Newark Northeast	96%	Yes	100%	Yes	100%	Yes
Newark South	100%	Yes	100%	Yes	100%	Yes
Ocean North	100%	Yes	100%	Yes	100%	Yes
Ocean South	100%	Yes	100%	Yes	100%	Yes
Passaic Central	93%	Yes	100%	Yes	100%	Yes
Passaic North	97%	Yes	100%	Yes	100%	Yes
Salem	87%	No	100%	Yes	100%	Yes
Somerset	88%	No	100%	Yes	50%	No
Sussex	100%	Yes	100%	Yes	100%	Yes
Union Central	95%	Yes	100%	Yes	100%	Yes
Union East	100%	Yes	100%	Yes	100%	Yes
Union West	91%	Yes	100%	Yes	100%	Yes
Warren	100%	Yes	100%	Yes	100%	Yes
Statewide ⁴	97%	Yes	100%	Yes	98%	Yes

1 Intake

- Intake worker compliance: % of workers with no more than 8 new intakes in the month, no more than 12 Primary families and no more than a total of 14 families.

- Office Compliance: % of offices that meet the caseload standards of no more than 8 new intakes and 12 total families.

2 Permanency

- Permanency worker compliance: % of workers who meet the caseload standards of no more than 15 families and 10 children in placement.

- Office Compliance: % of offices that meet the caseload standards of no more than 15 families and 10 children in placement.

3 Adoption

- Adoption worker compliance: % of adoption workers who meet the caseload standards of 15 or fewer children.

- Office Compliance: % of offices that meet the caseload standards of 15 or fewer children.

- Offices with blank data do not carry adoption caseloads, however adoption cases in those offices are handled by other offices in that area.

4 Statewide

- Performance is based on total workers in compliance for the month, not an average. Percentages are rounded to the whole number.

CP&P Key Performance Indicators by Local Office - 6 Months View														
Local Office	CPS Investigations Completed w/ 60 Days	CPS Investigations Completed w/ 90 Days	Monthly Staff Visits w/Children in Placement	Visits w/Children in Placement 2x/Month for 2 Months	Visits with Parents of Children in Placement 2x/Month	Weekly Parent/Child Visits-Children with Goal of Reunification	Bi-weekly Parent-Child Visits-Children with Goal of Reunification	Monthly Sibling Visits	Initial Case Plans w/ 30 Days of Placement	6 Months Review of Case Plans for Children in Placement	Initial Family Team Meetings w/ 45 days of Placement	3 Family Team Meetings in the first 12 months of Placement	3 Family Team Meetings after 12 months in Placement	2 Family Team Meeting after 12 months in Placement
Atlantic East	89%	97%	96%	88%	68%	58%	73%	79%	100%	100%	83%	90%	25%	100%
Atlantic West	90%	98%	96%	100%	66%	69%	80%	69%	82%	97%	88%	100%	100%	80%
Bergen Central	95%	98%	96%	90%	75%	81%	83%	0%	91%	100%	75%	100%		89%
Bergen South	83%	94%	96%	91%	69%	70%	74%	81%	100%	100%	21%	100%	0%	50%
Burlington East	86%	96%	98%	88%	78%	46%	71%	90%	100%	98%	80%	68%	0%	100%
Burlington West	71%	91%	81%	47%	64%	64%	77%	83%	89%	93%	26%	3%	33%	17%
Camden Central	83%	94%	89%	80%	77%	68%	86%	86%	93%	92%	50%	52%	100%	100%
Camden East	71%	89%	89%	91%	66%	69%	83%	84%	94%	87%	61%	100%	100%	100%
Camden North	73%	91%	94%	81%	72%	62%	74%	93%	95%	100%	60%	57%	100%	100%
Camden South	76%	97%	94%	98%	75%	64%	79%	98%	88%	93%	70%	78%	80%	88%
Cape May	88%	95%	95%	75%	67%	70%	85%	87%	100%	100%	50%	67%	100%	100%
Cumberland East	60%	85%	95%	100%	85%	94%	89%	100%	100%	100%	94%	100%		91%
Cumberland West	67%	93%	98%	100%	74%	74%	85%	93%	100%	100%	63%	100%		100%
Essex Central	85%	96%	95%	95%	69%	55%	75%	93%	100%	100%	78%	92%	83%	80%
Essex North	89%	97%	97%	85%	75%	63%	57%	55%	100%	100%	57%	0%	0%	75%
Essex South	82%	95%	96%	87%	58%	47%	74%	90%	95%	100%	58%	63%	89%	100%
Gloucester East	93%	99%	96%	97%	53%	62%	82%	88%	84%	100%	88%	89%	100%	78%
Gloucester West	84%	96%	95%	88%	76%	76%	82%	79%	94%	98%	91%	100%	100%	100%
Hudson Central	75%	90%	95%	78%	82%	67%	90%	87%	91%	98%	64%	42%	75%	57%
Hudson North	79%	95%	99%	88%	43%	58%	89%	56%	50%	75%	100%			78%
Hudson South	86%	95%	93%	100%	31%	37%	73%	91%	100%	94%	20%	0%	0%	83%
Hudson West	86%	97%	94%	75%	100%	93%	84%	71%	89%	100%	50%	25%		55%
Hunterdon	91%	96%	100%	100%	100%	0%	100%	100%	100%	100%	100%			50%
Mercer North	72%	91%	92%	83%	66%	55%	77%	97%	77%	92%	45%	46%	100%	81%
Mercer South	77%	91%	96%	54%	36%	33%	50%	70%	80%	98%	67%	60%	50%	77%
Middlesex Central	69%	90%	97%	77%	81%	59%	76%	84%	89%	100%	89%	89%	0%	0%
Middlesex Coastal	85%	96%	92%	77%	82%	73%	80%	82%	100%	97%	73%	50%	50%	50%
Middlesex West	83%	93%	96%	100%	63%	88%	79%	76%	100%	100%	71%	100%	100%	100%
Monmouth North	98%	99%	94%	86%	81%	79%	87%	99%	94%	100%	64%	85%	0%	50%
Monmouth South	95%	99%	94%	87%	68%	67%	77%	82%	80%	96%	76%	91%	100%	100%
Morris East	86%	96%	94%	100%	95%	100%	94%	96%	100%	100%	91%	88%	100%	100%
Morris West	90%	98%	97%	90%	89%	100%	96%	97%	100%	100%	100%		100%	88%
Newark Center City	87%	95%	99%	100%	84%	71%	81%	97%	100%	98%	83%	83%	100%	89%
Newark Northeast	72%	88%	84%	95%	33%	54%	62%	76%	100%	100%	58%	50%	20%	92%
Newark South	90%	95%	100%	96%	90%	66%	79%	94%	100%	100%	100%	100%	100%	100%
Ocean North	93%	98%	97%	100%	70%	76%	79%	91%	87%	93%	53%	88%	100%	100%
Ocean South	94%	98%	94%	89%	69%	75%	79%	86%	100%	96%	47%	89%	60%	70%
Passaic Central	92%	100%	98%	100%	82%	100%	80%	88%	100%	100%	92%	100%	100%	100%
Passaic North	92%	97%	96%	100%	91%	100%	94%	98%	100%	100%	97%	100%	100%	100%
Salem	71%	88%	97%	100%	90%	64%	82%	89%	100%	100%	91%	100%	100%	100%
Somerset	83%	95%	82%	63%	53%	54%	88%	91%	100%	100%	50%	100%		0%
Sussex	96%	98%	98%	100%	91%	100%	91%	88%	100%	100%	100%	100%		100%
Union Central	72%	91%	96%	100%	63%	75%	82%	97%	100%	100%	100%	100%		100%
Union East	85%	95%	97%	100%	82%	83%	80%	86%	100%	100%	55%			44%
Union West	69%	93%	92%	90%	76%	75%	87%	83%	100%	100%	80%	38%		33%
Warren	60%	87%	85%	55%	48%	53%	61%	80%	100%	96%	71%	80%		100%
Statewide	83%	95%	94%	87%	71%	66%	79%	86%	94%	97%	69%	71%	71%	83%
Blank cells mean that the office did not have any children eligible for that measure during that period.														
Description of the Measure											Time Period Analyzed			
CPS Investigations Completed w/ 60 Days											December 23 - 'May 24			
CPS Investigations Completed w/ 90 Days											December 23 - 'May 24			
Monthly Staff Visits w/Children in Placement											February 24 - 'July 24			
Visits w/Children in Placement 2x/Month for 2 Months											December 23 - 'May 24			
Visits with Parents of Children in Placement 2x/Month											February 24 - 'July 24			
Weekly Parent/Child Visits-Children with Goal of Reunification											6/22/2024 - '7/27/2024			
Bi-weekly Parent-Child Visits-Children with Goal of Reunification											February 24 - 'July 24			
Monthly Sibling Visits											February 24 - 'July 24			
Initial Case Plans w/ 30 Days of Placement											February 24 - 'July 24			
6 Months Review of Case Plans for Children in Placement											February 24 - 'July 24			
Initial Family Team Meetings w/ 45 days of Placement											January 24 - 'June 24			
3 Family Team Meetings in the first 12 months of Placement											February 24 - 'July 24			
3 Family Team Meetings after 12 months in Placement											February 24 - 'July 24			
2 Family Team Meeting after 12 months in Placement											February 24 - 'July 24			