



NEW JERSEY DEPARTMENT OF
CHILDREN AND FAMILIES

Child Protection and Permanency

Monthly Screening and Investigation Report November 2022

Christine Norbut Beyer, MSW
Commissioner



Table of Contents

Table 1: NJ State Central Registry Activity: Monthly Child Abuse and Neglect Hotline Calls, Intakes and Assignments to Child Protection & Permanency (CP&P) Offices

Chart 1: CP&P Annual Trends in Child Protection Services (CPS) Reports and Child Welfare Services (CWS) Referrals

Table 2: Assignments to CP&P Offices: CPS Reports and CWS Referrals

Table 3: Source of CPS Reports and CWS Referrals

Table 4: Monthly Count of CPS Reports and CWS Referrals Assigned to Counties

Table 5: Monthly Count of CPS Reports and CWS Referrals Assigned to CP&P Local Offices

Table 1: NJ State Central Registry Activity: Monthly Child Abuse and Neglect Hotline Calls, Intakes and Assignments to CP&P Offices^{1,2,7}

2021-2022	Hotline Call Activity				Intakes Recorded in NJ SPIRIT ^{6,8}												Assignments to CP&P Offices						
	Total Calls to SCR ³	Abandon Calls ⁴	Average Time to Answer (seconds)	Resulting NJS Intakes ⁵	CPS Reports		CWS Referrals		No Action Required (NAR)		Related Information (RI)		Information & Referral (I&R)		Information Only (IO)		Unusual Incident (UIRS)		CPS Reports		CWS Referrals		Total
					n	%	n	%	n	%	n	%	n	%	n	%	n	%	n	%	n	%	
November 2021	13,077	1,619	262	12,689	4,689	37.0%	539	4.2%	165	1.3%	2,817	22.2%	2,865	22.6%	1,609	12.7%	5	0.0%	4,689	89.7%	541	10.3%	5,230
December 2021	12,921	1,426	222	12,594	4,601	36.5%	558	4.4%	157	1.2%	2,746	21.8%	2,858	22.7%	1,660	13.2%	14	0.1%	4,601	89.2%	557	10.8%	5,158
January 2022	11,733	942	163	11,798	4,274	36.2%	524	4.4%	116	1.0%	2,561	21.7%	2,641	22.4%	1,672	14.2%	10	0.1%	4,274	89.1%	523	10.9%	4,797
February 2022	13,523	1,838	304	12,923	4,867	37.7%	632	4.9%	168	1.3%	2,732	21.1%	2,990	23.1%	1,524	11.8%	10	0.1%	4,867	88.5%	635	11.5%	5,502
March 2022	15,347	1,916	281	14,886	5,781	38.8%	727	4.9%	207	1.4%	2,946	19.8%	3,468	23.3%	1,750	11.8%	7	0.0%	5,780	88.8%	727	11.2%	6,507
April 2022	13,145	2,124	398	12,290	4,669	38.0%	637	5.2%	168	1.4%	2,486	20.2%	2,786	22.7%	1,537	12.5%	7	0.1%	4,669	88.0%	636	12.0%	5,305
May 2022	13,609	1,526	201	13,433	5,228	38.9%	644	4.8%	177	1.3%	2,804	20.9%	2,967	22.1%	1,604	11.9%	9	0.1%	5,228	89.0%	647	11.0%	5,875
June 2022	13,105	1,997	325	12,478	4,854	38.9%	597	4.8%	196	1.6%	2,678	21.5%	2,580	20.7%	1,569	12.6%	4	0.0%	4,854	89.0%	598	11.0%	5,452
July 2022	11,225	1,022	164	11,445	4,277	37.4%	590	5.2%	155	1.4%	2,712	23.7%	1,956	17.1%	1,749	15.3%	6	0.1%	4,277	87.9%	590	12.1%	4,867
August 2022	10,651	841	101	16,623	4,103	24.7%	589	3.5%	164	1.0%	2,465	14.8%	4,070	24.5%	5,202	31.3%	30	0.2%	4,103	87.4%	589	12.6%	4,692
September 2022	12,502	1,199	129	12,828	4,810	37.5%	681	5.3%	178	1.4%	2,818	22.0%	2,724	21.2%	1,614	12.6%	3	0.0%	4,810	87.6%	680	12.4%	5,490
October 2022	13,496	1,226	142	16,804	5,356	31.9%	724	4.3%	178	1.1%	3,153	18.8%	4,212	25.1%	3,160	18.8%	21	0.1%	5,356	88.1%	725	11.9%	6,081
November 2022	12,599	1,217	156	12,974	4,852	37.4%	762	5.9%	189	1.5%	2,998	23.1%	2,658	20.5%	1,509	11.6%	6	0.0%	4,852	86.4%	762	13.6%	5,614
	12,841	1,453	219	13,367	4,797	35.9%	631	4.7%	171	1.3%	2,763	20.7%	2,983	22.3%	2,012	15.1%	10	0.1%	4,797	88.4%	632	11.6%	5,428
Overall Total	166,933	18,893		173,765	62,361		8,204		2,218		35,916		38,775		26,159		132		62,360	88.4%	8,210	11.6%	70,570

¹Comes from three distinct sources: (1) the Automatic Call Distribution (ACD) phone system; which keeps a count of the number of calls and call routing; (2) Monthly NJSpirit Intakes; which record decision making on calls received by hotline screeners, and (3)

²The number of Intakes, CPS Reports, and CWS Referrals are based on an extract from NJSpirit.

³Data extracted by the Office of Research, Evaluation, and Reporting on **December 08, 2022** includes all Intakes, CPS Reports, and CWS Referrals received from **November 01, 2022** through **November 30, 2022**.

⁴The number of calls received through the ACD System that were directed to a screener from any call-in phone number.

⁵The number of calls received through the ACD System that are abandoned either while waiting in queue or while ringing.

⁶The number of Intakes entered in NJSpirit from the number of calls received.

⁷The number of Intakes recorded in NJSpirit, by type of Intake. There is not a one-to-one relationship between an ACD call and an Intake; multiple calls to State Central Registry (SCR) may result in a single Intake, or one call may result in multiple Intakes.

⁸Intake: The process of documenting: a report of alleged abuse or neglect of a child (CPS); a request for services on behalf of a child, or a referral of a child for services (CWS); a call in which the caller provides additional or clarifying information about a current

CP&P Annual Trends in CPS Reports and CWS Referrals

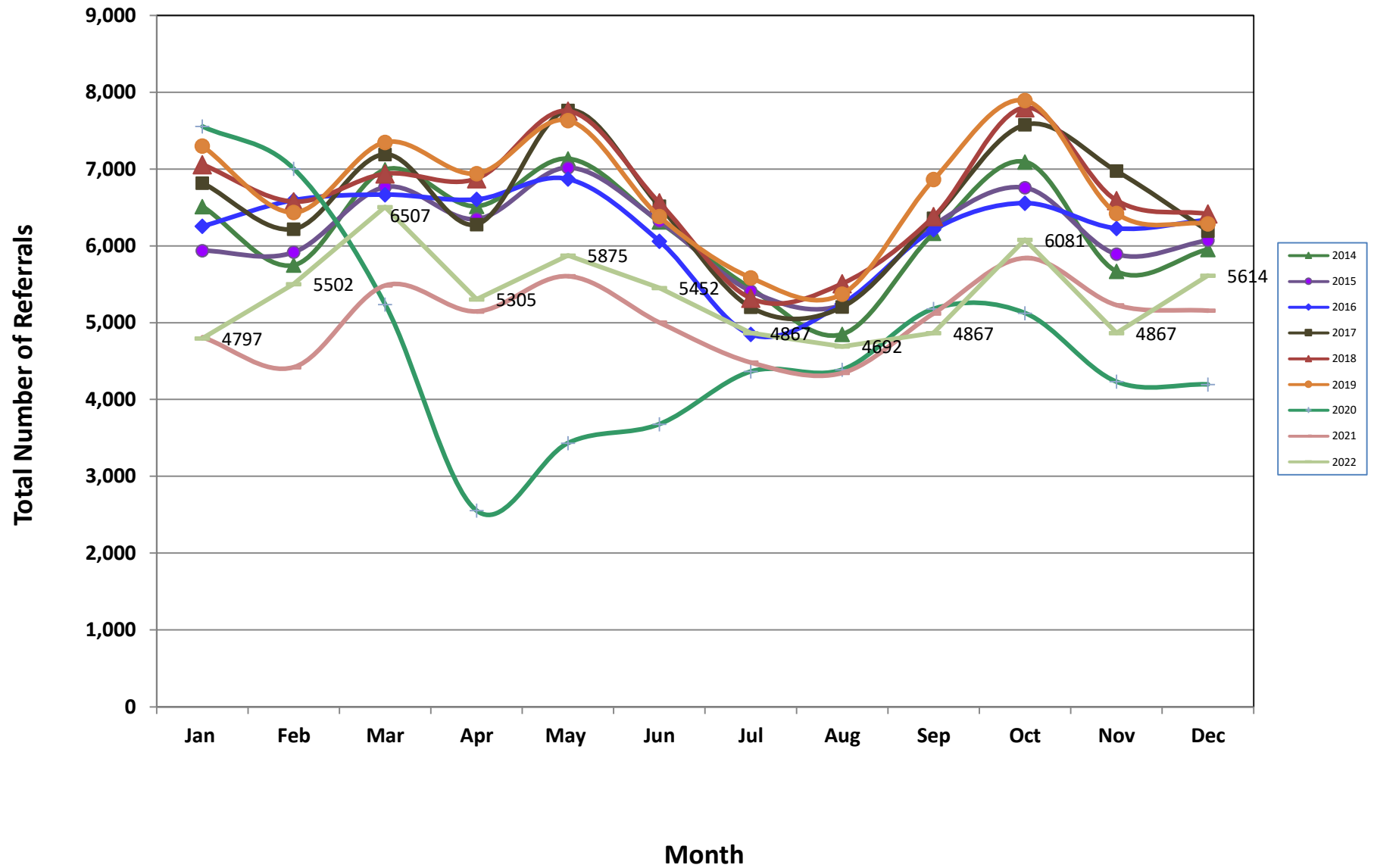


Table 2: Assignments to CP&P Offices: CPS Reports and CWS Referrals¹

Intake Date ³		CPS Reports ²	CWS Referrals ²	Total Assignments ²
2017	Jan 2017	5,111	1,708	6,819
	Feb 2017	4,716	1,504	6,220
	Mar 2017	5,349	1,843	7,192
	Apr 2017	4,790	1,490	6,280
	May 2017	5,847	1,919	7,766
	Jun 2017	4,853	1,665	6,518
	Jul 2017	3,814	1,389	5,203
	Aug 2017	3,866	1,340	5,206
	Sep 2017	4,719	1,643	6,362
	Oct 2017	5,613	1,966	7,579
	Nov 2017	5,223	1,753	6,976
	Dec 2017	4,601	1,594	6,195
	Total	58,502	19,814	78,316
2018	Jan 2018	5,276	1,784	7,060
	Feb 2018	4,933	1,644	6,577
	Mar 2018	5,212	1,727	6,939
	Apr 2018	5,275	1,601	6,876
	May 2018	5,920	1,836	7,756
	Jun 2018	4,948	1,615	6,563
	Jul 2018	4,011	1,308	5,319
	Aug 2018	4,102	1,408	5,510
	Sep 2018	4,748	1,634	6,382
	Oct 2018	5,790	2,011	7,801
	Nov 2018	4,973	1,620	6,593
	Dec 2018	4,891	1,527	6,418
	Total	60,079	19,715	79,794
2019	Jan 2019	5,443	1,858	7,301
	Feb 2019	4,811	1,628	6,439
	Mar 2019	5,677	1,824	7,501
	Apr 2019	5,313	1,630	6,943
	May 2019	5,853	1,781	7,634
	Jun 2019	4,874	1,509	6,383
	Jul 2019	4,277	1,309	5,586
	Aug 2019	4,068	1,306	5,374
	Sep 2019	5,315	1,551	6,866
	Oct 2019	5,968	1,926	7,894
	Nov 2019	4,991	1,432	6,423
	Dec 2019	4,855	1,434	6,289
	Total	61,445	19,188	80,633

Table 2: Assignments to CP&P Offices: CPS Reports and CWS Referrals¹

Intake Date ³		CPS Reports ²	CWS Referrals ²	Total Assignments ²
2020	Jan 2020	5,715	1,842	7,557
	Feb 2020	5,380	1,624	7,004
	Mar 2020	4,172	1,065	5,237
	Apr 2020	2,149	407	2,556
	May 2020	2,897	537	3,434
	Jun 2020	3,045	636	3,681
	Jul 2020	3,628	738	4,366
	Aug 2020	3,569	822	4,391
	Sep 2020	4,153	1,030	5,183
	Oct 2020	4,257	868	5,125
	Nov 2020	3,564	670	4,234
	Dec 2020	3,517	681	4,198
Total		46,046	10,920	56,966
2021	Jan 2021	4,018	794	4,812
	Feb 2021	3,767	655	4,422
	Mar 2021	4,657	830	5,487
	Apr 2021	4,398	750	5,148
	May 2021	4,870	736	5,606
	Jun 2021	4,412	592	5,004
	Jul 2021	3,914	570	4,484
	Aug 2021	3,866	482	4,348
	Sep 2021	4,559	564	5,123
	Oct 2021	5,213	630	5,843
	Nov 2021	4,689	541	5,230
	Dec 2021	4,601	557	5,158
Total		52,964	7,701	60,665
2022	Jan 2022	4,274	523	4,797
	Feb 2022	4,867	635	5,502
	Mar 2022	5,780	727	6,507
	Apr 2022	4,669	636	5,305
	May 2022	5,228	647	5,875
	Jun 2022	4,854	598	5,452
	Jul 2022	4,277	590	4,867
	Aug 2022	4,103	589	4,692
	Sep 2022	4,810	680	5,490
	Oct 2022	5,356	725	6,081
	Nov 2022	4,852	762	5,614
Total		48,796	6,589	55,385
Grand Total		327,832	83,927	411,759

¹Source of Data: NJ SPIRIT

²A CPS Report or a CWS Referral may include multiple children in a family, with one or more allegation or request for services. In these cases, each CPS Report or CWS Referral is counted once - the CPS Report or the CWS Referral is the unit of analysis rather than the child.

³Prior to January 2014, the number of CPS Reports and CWS Referrals was based on the type of assignment of the CPS Report or CWS Referral. Beginning in January 2014, the number of CPS Reports and CWS Referrals is based on the number of CPS Reports and CWS Referrals received.

Table 3: Source of CPS Reports and CWS Referrals

CPS Reports and CWS Referrals	Source	Nov 2021	Dec 2021	Jan 2022	Feb 2022	Mar 2022	Apr 2022	May 2022	Jun 2022	Jul 2022	Aug 2022	Sep 2022	Oct 2022	Nov 2022		13 Month Total	
	School Staff	1,303	1,252	983	1,549	1,998	1,227	1,456	929	162	91	1,130	1,602	1,394	25%	15,076	21%
	Healthcare Provider	746	706	746	750	895	728	763	786	787	777	747	843	825	15%	10,099	14%
	Law Enforcement	1,340	1,341	1,238	1,234	1,478	1,373	1,513	1,549	1,624	1,617	1,421	1,514	1,422	25%	18,664	26%
	Government Agency	205	209	212	253	261	261	233	262	276	260	243	258	240	4%	3,173	4%
	Parent	377	378	347	349	380	333	383	399	420	413	421	426	342	6%	4,968	7%
	Relative/Friend/Neighbor	289	342	337	275	298	301	344	318	380	346	337	296	313	6%	4,176	6%
	Anonymous	364	367	366	461	471	410	527	493	437	458	502	480	458	8%	5,794	8%
	CP&P	45	49	54	56	75	62	42	53	53	46	57	49	45	1%	686	1%
	Court/Legal	89	89	100	108	144	140	116	136	144	147	139	135	113	2%	1,600	2%
	Community Group/Individual	169	144	158	183	198	176	201	205	235	211	180	158	165	3%	2,383	3%
	Facility Staff (incl Correctional Facility)	47	53	54	56	55	59	62	59	59	52	35	44	45	1%	680	1%
	Child (Self)	28	30	29	29	25	25	18	28	30	34	33	21	25	0%	355	1%
	Other	217	182	160	183	209	188	194	222	241	216	224	233	199	4%	2,668	4%
	Daycare/Babysitter	11	16	13	16	20	22	23	13	19	24	21	22	28	0%	248	0%
Total	5,230	5,158	4,797	5,502	6,507	5,305	5,875	5,452	4,867	4,692	5,490	6,081	5,614		70,570		

Table 4: Monthly Count of CPS Reports and CWS Referrals Assigned to Counties

County														Average Number of Assignments Last 13 Months	Oct 22 to Nov 22 Numerical Difference
	Nov 2021	Dec 2021	Jan 2022	Feb 2022	Mar 2022	Apr 2022	May 2022	Jun 2022	Jul 2022	Aug 2022	Sep 2022	Oct 2022	Nov 2022		
Atlantic	234	215	189	245	268	222	250	233	197	217	236	256	197	228	-59
Bergen	345	360	290	354	425	348	327	349	305	276	315	356	350	338	-6
Burlington	264	270	264	283	359	255	300	292	284	240	305	314	332	289	18
Camden	407	419	404	449	542	458	474	422	385	415	511	499	472	451	-27
Cape May	66	70	62	59	74	62	68	69	76	78	80	81	69	70	-12
Cumberland	167	190	149	160	202	166	206	182	180	166	174	195	183	178	-12
Essex	535	489	456	550	647	532	581	517	477	497	528	590	562	535	-28
Gloucester	215	204	216	195	257	217	218	206	211	190	222	221	248	217	27
Hudson	349	321	341	392	415	324	409	327	323	242	356	352	342	346	-10
Hunterdon	44	44	40	33	55	46	38	56	29	32	52	54	49	44	-5
Mercer	218	230	189	229	263	217	258	229	239	232	236	294	240	236	-54
Middlesex	355	408	356	464	520	388	432	404	283	308	409	436	422	399	-14
Monmouth	294	294	260	288	342	297	332	286	236	266	289	317	317	294	0
Morris	189	176	193	193	213	180	216	205	165	171	190	230	179	192	-51
Ocean	341	333	304	305	370	332	372	375	340	320	356	391	352	345	-39
Passaic	350	330	274	354	415	347	385	350	295	264	323	396	326	339	-70
Salem	56	57	65	74	84	55	81	53	62	67	70	60	64	65	4
Somerset	130	111	112	141	165	107	142	132	113	92	130	174	137	130	-37
Sussex	85	72	84	100	107	95	95	95	73	69	87	114	103	91	-11
Union	277	277	257	290	363	317	332	310	281	259	265	353	301	299	-52
Warren	93	67	86	83	121	79	86	85	73	78	100	91	80	86	-11
County Subtotals	5,014	4,937	4,591	5,241	6,207	5,044	5,602	5,177	4,627	4,479	5,234	5,774	5,325	5,173	-449
Central Region IAIU	31	37	32	43	54	35	60	32	38	35	47	50	56	42	6
Metro Region IAIU	26	21	27	36	35	35	41	41	22	23	34	54	33	33	-21
Northern Region IAIU	44	42	28	40	50	38	52	40	32	33	42	50	50	42	0
Southern Region IAIU	33	42	35	46	59	46	48	56	56	27	50	69	50	47	-19
IAIU Subtotals	134	142	122	165	198	154	201	169	148	118	173	223	189	164	-34
¹ Unable to Determine	82	78	84	92	102	107	72	103	90	93	80	84	99	90	15
Other Offices	0	1	0	4	0	0	0	3	2	2	3	0	1	1	1
Grand Total	5,230	5,158	4,797	5,502	6,507	5,305	5,875	5,452	4,867	4,692	5,490	6,081	5,614	5,428	-467

¹CPS Reports or CWS Referrals not assigned to an office through the Assignment Designee, but were assigned to an office for an assessment or investigation.



Table 5: Monthly Count of CPS Reports and CWS Referrals Assigned to CP&P Local Offices

County	Local Office	Type of Referral														Total
			Nov 2021	Dec 2021	Jan 2022	Feb 2022	Mar 2022	Apr 2022	May 2022	Jun 2022	Jul 2022	Aug 2022	Sep 2022	Oct 2022	Nov 2022	
ATLANTIC	Atlantic East	CPS	118	104	114	124	128	106	116	117	88	100	106	106	90	1,417
		CWS	12	14	9	13	21	26	15	19	21	22	15	15	20	222
		Total	130	118	123	137	149	132	131	136	109	122	121	121	110	1,639
	Atlantic West	CPS	90	85	58	90	103	81	107	85	74	84	107	113	75	1,152
		CWS	14	12	8	18	16	9	12	12	14	11	8	22	12	168
		Total	104	97	66	108	119	90	119	97	88	95	115	135	87	1,320
	County Totals	CPS	208	189	172	214	231	187	223	202	162	184	213	219	165	2,569
		CWS	26	26	17	31	37	35	27	31	35	33	23	37	32	390
		Total	234	215	189	245	268	222	250	233	197	217	236	256	197	2,959
BERGEN	Bergen Central	CPS	133	127	111	152	169	119	119	142	108	82	117	137	145	1,661
		CWS	18	11	13	17	17	18	13	7	14	27	17	19	21	212
		Total	151	138	124	169	186	137	132	149	122	109	134	156	166	1,873
	Bergen South	CPS	174	197	148	170	217	188	179	176	160	142	156	176	159	2,242
		CWS	20	25	18	15	22	23	16	24	23	25	25	24	25	285
		Total	194	222	166	185	239	211	195	200	183	167	181	200	184	2,527
	County Totals	CPS	307	324	259	322	386	307	298	318	268	224	273	313	304	3,903
		CWS	38	36	31	32	39	41	29	31	37	52	42	43	46	497
		Total	345	360	290	354	425	348	327	349	305	276	315	356	350	4,400
BURLINGTON	Burlington East	CPS	115	111	119	121	162	103	134	133	115	96	130	136	133	1,608
		CWS	18	16	16	11	17	17	15	21	16	22	26	19	20	234
		Total	133	127	135	132	179	120	149	154	131	118	156	155	153	1,842
	Burlington West	CPS	115	128	119	127	156	118	129	123	134	106	125	132	154	1,666
		CWS	16	15	10	24	24	17	22	15	19	16	24	27	25	254
		Total	131	143	129	151	180	135	151	138	153	122	149	159	179	1,920
	County Totals	CPS	230	239	238	248	318	221	263	256	249	202	255	268	287	3,274
		CWS	34	31	26	35	41	34	37	36	35	38	50	46	45	488
		Total	264	270	264	283	359	255	300	292	284	240	305	314	332	3,762
CAMDEN	Camden Central	CPS	93	91	91	104	111	95	112	99	95	112	124	136	97	1,360
		CWS	15	14	16	16	7	9	17	21	13	20	22	20	15	205
		Total	108	105	107	120	118	104	129	120	108	132	146	156	112	1,565
	Camden East	CPS	94	81	84	95	106	107	94	98	84	68	111	93	121	1,236
		CWS	14	20	22	11	20	15	16	20	8	9	17	20	16	208
		Total	108	101	106	106	126	122	110	118	92	77	128	113	137	1,444
	Camden North	CPS	91	87	89	103	135	98	85	71	73	86	110	109	87	1,224
		CWS	5	14	9	16	22	22	21	12	18	14	12	16	32	213
		Total	96	101	98	119	157	120	106	83	91	100	122	125	119	1,437
	Camden South	CPS	85	94	83	95	117	101	122	88	81	92	102	93	86	1,239
		CWS	10	18	10	9	24	11	7	13	13	14	13	12	18	172
		Total	95	112	93	104	141	112	129	101	94	106	115	105	104	1,411
	County Totals	CPS	363	353	347	397	469	401	413	356	333	358	447	431	391	5,059
		CWS	44	66	57	52	73	57	61	66	52	57	64	68	81	798
		Total	407	419	404	449	542	458	474	422	385	415	511	499	472	5,857
CAPE MAY	Cape May	CPS	56	61	56	52	63	56	58	61	68	66	67	71	63	798
		CWS	10	9	6	7	11	6	10	8	8	12	13	10	6	116
		Total	66	70	62	59	74	62	68	69	76	78	80	81	69	914
	County Totals	CPS	56	61	56	52	63	56	58	61	68	66	67	71	63	798
		CWS	10	9	6	7	11	6	10	8	8	12	13	10	6	116
		Total	66	70	62	59	74	62	68	69	76	78	80	81	69	914
CUMBERLAND	Cumberland East	CPS	59	71	56	54	74	59	65	65	62	66	56	82	78	847
		CWS	6	8	11	14	10	4	12	11	10	12	13	5	3	119
		Total	65	79	67	68	84	63	77	76	72	78	69	87	81	966
	Cumberland West	CPS	94	96	67	81	109	90	115	94	92	78	93	91	95	1,195
		CWS	8	15	15	11	9	13	14	12	16	10	12	17	7	159
		Total	102	111	82	92	118	103	129	106	108	88	105	108	102	1,354
	County Totals	CPS	153	167	123	135	183	149	180	159	154	144	149	173	173	2,042
CWS		14	23	26	25	19	17	26	23	26	22	25	22	10	278	
Total		167	190	149	160	202	166	206	182	180	166	174	195	183	2,320	

Data in this report is preliminary and may differ from any final report. This report is produced to ensure continuous quality improvement throughout DCF.



Table 5: Monthly Count of CPS Reports and CWS Referrals Assigned to CP&P Local Offices

County	Local Office	Type of Referral														Total
			Nov 2021	Dec 2021	Jan 2022	Feb 2022	Mar 2022	Apr 2022	May 2022	Jun 2022	Jul 2022	Aug 2022	Sep 2022	Oct 2022	Nov 2022	
ESSEX	Essex Central	CPS	78	68	57	69	78	89	83	77	73	79	85	89	70	995
		CWS	7	12	6	13	10	14	10	9	8	9	10	12	19	139
		Total	85	80	63	82	88	103	93	86	81	88	95	101	89	1,134
	Essex North	CPS	85	109	81	88	115	82	91	90	71	60	86	92	85	1,135
		CWS	12	8	13	10	6	7	11	6	13	5	8	16	13	128
		Total	97	117	94	98	121	89	102	96	84	65	94	108	98	1,263
	Essex South	CPS	84	62	65	89	123	82	106	86	77	83	66	90	87	1100
		CWS	11	15	8	11	15	10	17	9	12	9	11	19	12	159
		Total	95	77	73	100	138	92	123	95	89	92	77	109	99	1259
	Newark Center City	CPS	64	75	79	71	90	75	88	67	65	73	74	93	77	991
		CWS	11	13	2	8	9	9	9	10	9	10	8	14	13	125
		Total	75	88	81	79	99	84	97	77	74	83	82	107	90	1116
	Newark Northeast	CPS	80	50	68	91	94	83	72	63	61	74	79	77	82	974
		CWS	6	5	8	13	14	5	6	7	10	11	14	8	16	123
		Total	86	55	76	104	108	88	78	70	71	85	93	85	98	1097
	Newark South	CPS	85	65	55	79	88	65	76	80	68	75	73	74	76	959
		CWS	12	7	14	8	5	11	12	13	10	9	14	6	12	133
		Total	97	72	69	87	93	76	88	93	78	84	87	80	88	1092
County Totals	CPS	476	429	405	487	588	476	516	463	415	444	463	515	477	6154	
	CWS	59	60	51	63	59	56	65	54	62	53	65	75	85	807	
	Total	535	489	456	550	647	532	581	517	477	497	528	590	562	6961	
GLOUCESTER	Gloucester East	CPS	88	90	86	84	107	79	88	81	90	78	74	75	100	1120
		CWS	13	7	14	12	16	18	9	13	13	11	15	10	14	165
		Total	101	97	100	96	123	97	97	94	103	89	89	85	114	1285
	Gloucester West	CPS	95	92	103	91	123	103	109	98	101	85	110	114	114	1338
		CWS	19	15	13	8	11	17	12	14	7	16	23	22	20	197
		Total	114	107	116	99	134	120	121	112	108	101	133	136	134	1535
	County Totals	CPS	183	182	189	175	230	182	197	179	191	163	184	189	214	2458
		CWS	32	22	27	20	27	35	21	27	20	27	38	32	34	362
		Total	215	204	216	195	257	217	218	206	211	190	222	221	248	2820
HUDSON	Hudson Central	CPS	80	70	78	93	99	74	131	82	90	75	93	82	89	1136
		CWS	18	15	9	18	17	11	10	14	10	9	11	15	20	177
		Total	98	85	87	111	116	85	141	96	100	84	104	97	109	1313
	Hudson North	CPS	80	81	90	98	108	65	74	70	69	48	86	88	69	1026
		CWS	6	8	5	12	10	10	10	6	9	6	15	5	9	111
		Total	86	89	95	110	118	75	84	76	78	54	101	93	78	1137
	Hudson South	CPS	68	59	62	69	74	63	80	74	61	40	70	59	53	832
		CWS	4	5	12	8	4	10	14	8	10	8	7	14	12	116
		Total	72	64	74	77	78	73	94	82	71	48	77	73	65	948
	Hudson West	CPS	87	77	76	87	90	84	84	66	67	47	65	80	76	986
		CWS	6	6	9	7	13	7	6	7	7	9	9	9	14	109
		Total	93	83	85	94	103	91	90	73	74	56	74	89	90	1095
	County Totals	CPS	315	287	306	347	371	286	369	292	287	210	314	309	287	3980
		CWS	34	34	35	45	44	38	40	35	36	32	42	43	55	513
		Total	349	321	341	392	415	324	409	327	323	242	356	352	342	4493
HUNTERDON	Hunterdon	CPS	42	42	36	30	50	39	34	50	25	27	49	50	40	514
		CWS	2	2	4	3	5	7	4	6	4	5	3	4	9	58
		Total	44	44	40	33	55	46	38	56	29	32	52	54	49	572
	County Totals	CPS	42	42	36	30	50	39	34	50	25	27	49	50	40	514
		CWS	2	2	4	3	5	7	4	6	4	5	3	4	9	58
Total	44	44	40	33	55	46	38	56	29	32	52	54	49	572		
MERCER	Mercer North	CPS	97	95	87	99	129	91	131	111	103	103	122	130	108	1406
		CWS	12	12	13	16	14	18	12	15	19	14	10	11	23	189
		Total	109	107	100	115	143	109	143	126	122	117	132	141	131	1595
	Mercer South	CPS	101	108	76	107	106	100	96	93	104	99	90	129	98	1307
		CWS	8	15	13	7	14	8	19	10	13	16	14	24	11	172
		Total	109	123	89	114	120	108	115	103	117	115	104	153	109	1479
	County Totals	CPS	198	203	163	206	235	191	227	204	207	202	212	259	206	2713
		CWS	20	27	26	23	28	26	31	25	32	30	24	35	34	361
Total		218	230	189	229	263	217	258	229	239	232	236	294	240	3074	

Data in this report is preliminary and may differ from any final report. This report is produced to ensure continuous quality improvement throughout DCF.

Table 5: Monthly Count of CPS Reports and CWS Referrals Assigned to CP&P Local Offices

County	Local Office	Type of Referral													Total		
			Nov 2021	Dec 2021	Jan 2022	Feb 2022	Mar 2022	Apr 2022	May 2022	Jun 2022	Jul 2022	Aug 2022	Sep 2022	Oct 2022		Nov 2022	
MIDDLESEX	Middlesex Central	CPS	101	114	114	125	129	126	107	117	64	79	100	109	91	1376	
		CWS	9	10	5	19	18	12	14	12	12	7	2	17	21	15	161
		Total	110	124	119	144	147	138	121	129	71	81	117	130	106	1537	
	Middlesex Coastal	CPS	120	120	113	138	173	124	137	127	106	116	137	139	153	1703	
		CWS	9	12	6	10	8	12	13	13	14	12	19	14	16	158	
		Total	129	132	119	148	181	136	150	140	120	128	156	153	169	1861	
	Middlesex West	CPS	106	146	109	153	171	100	147	121	83	89	114	135	131	1605	
		CWS	10	6	9	19	21	14	14	14	9	10	22	18	16	182	
		Total	116	152	118	172	192	114	161	135	92	99	136	153	147	1787	
	County Totals	CPS	327	380	336	416	473	350	391	365	253	284	351	383	375	4684	
		CWS	28	28	20	48	47	38	41	39	30	24	58	53	47	501	
		Total	355	408	356	464	520	388	432	404	283	308	409	436	422	5185	
MONMOUTH	Monmouth North	CPS	132	158	132	145	186	157	172	134	123	123	142	187	158	1949	
		CWS	17	17	11	12	14	16	22	5	13	23	11	15	24	200	
		Total	149	175	143	157	200	173	194	139	136	146	153	202	182	2149	
	Monmouth South	CPS	134	108	100	114	130	110	126	136	88	110	112	106	119	1493	
		CWS	11	11	17	17	12	14	12	11	12	10	24	9	16	176	
		Total	145	119	117	131	142	124	138	147	100	120	136	115	135	1669	
	County Totals	CPS	266	266	232	259	316	267	298	270	211	233	254	293	277	3442	
		CWS	28	28	28	29	26	30	34	16	25	33	35	24	40	376	
		Total	294	294	260	288	342	297	332	286	236	266	289	317	317	3818	
MORRIS	Morris East	CPS	82	73	75	101	89	72	85	85	67	70	82	99	88	1068	
		CWS	7	12	11	5	8	11	7	12	9	7	5	10	13	117	
		Total	89	85	86	106	97	83	92	97	76	77	87	109	101	1185	
	Morris West	CPS	90	84	99	78	101	82	112	99	82	84	95	102	68	1176	
		CWS	10	7	8	9	15	15	12	9	7	10	8	19	10	139	
		Total	100	91	107	87	116	97	124	108	89	94	103	121	78	1315	
	County Totals	CPS	172	157	174	179	190	154	197	184	149	154	177	201	156	2244	
		CWS	17	19	19	14	23	26	19	21	16	17	13	29	23	256	
		Total	189	176	193	193	213	180	216	205	165	171	190	230	179	2500	
OCEAN	Ocean North	CPS	172	159	154	151	158	171	172	172	161	139	163	190	161	2123	
		CWS	13	14	18	22	24	16	23	18	13	18	17	21	28	245	
		Total	185	173	172	173	182	187	195	190	174	157	180	211	189	2368	
	Ocean South	CPS	144	145	123	116	168	128	153	173	145	147	163	163	148	1916	
		CWS	12	15	9	16	20	17	24	12	21	16	13	17	15	207	
		Total	156	160	132	132	188	145	177	185	166	163	176	180	163	2123	
County Totals	CPS	316	304	277	267	326	299	325	345	306	286	326	353	309	4039		
	CWS	25	29	27	38	44	33	47	30	34	34	30	38	43	452		
	Total	341	333	304	305	370	332	372	375	340	320	356	391	352	4491		
PASSAIC	Passaic Central	CPS	160	155	144	165	187	140	177	164	127	115	157	161	140	1992	
		CWS	18	14	15	29	24	25	18	14	5	10	21	24	25	242	
		Total	178	169	159	194	211	165	195	178	132	125	178	185	165	2234	
	Passaic North	CPS	157	152	104	136	182	154	166	157	143	124	126	187	135	1923	
		CWS	15	9	11	24	22	28	24	15	20	15	19	24	26	252	
		Total	172	161	115	160	204	182	190	172	163	139	145	211	161	2175	
	County Totals	CPS	317	307	248	301	369	294	343	321	270	239	283	348	275	3915	
		CWS	33	23	26	53	46	53	42	29	25	25	40	48	51	494	
		Total	350	330	274	354	415	347	385	350	295	264	323	396	326	4409	
SALEM	Salem	CPS	50	49	58	59	70	48	72	46	51	62	61	53	56	735	
		CWS	6	8	7	15	14	7	9	7	11	5	9	7	8	113	
		Total	56	57	65	74	84	55	81	53	62	67	70	60	64	848	
	County Totals	CPS	50	49	58	59	70	48	72	46	51	62	61	53	56	735	
		CWS	6	8	7	15	14	7	9	7	11	5	9	7	8	113	
		Total	56	57	65	74	84	55	81	53	62	67	70	60	64	848	
SOMERSET	Somerset	CPS	125	101	103	132	149	103	132	119	102	81	116	152	124	1539	
		CWS	5	10	9	9	16	4	10	13	11	11	14	22	13	147	
		Total	130	111	112	141	165	107	142	132	113	92	130	174	137	1686	
	County Totals	CPS	125	101	103	132	149	103	132	119	102	81	116	152	124	1539	
		CWS	5	10	9	9	16	4	10	13	11	11	14	22	13	147	
Total	130	111	112	141	165	107	142	132	113	92	130	174	137	1686			



Table 5: Monthly Count of CPS Reports and CWS Referrals Assigned to CP&P Local Offices

County	Local Office	Type of Referral														Total
			Nov 2021	Dec 2021	Jan 2022	Feb 2022	Mar 2022	Apr 2022	May 2022	Jun 2022	Jul 2022	Aug 2022	Sep 2022	Oct 2022	Nov 2022	
SUSSEX	Sussex	CPS	71	67	77	89	98	84	85	77	65	64	78	100	89	1044
		CWS	14	5	7	11	9	11	10	18	8	5	9	14	14	135
		Total	85	72	84	100	107	95	95	95	73	69	87	114	103	1179
	County Totals	CPS	71	67	77	89	98	84	85	77	65	64	78	100	89	1044
		CWS	14	5	7	11	9	11	10	18	8	5	9	14	14	135
		Total	85	72	84	100	107	95	95	95	73	69	87	114	103	1179
UNION	Union Central	CPS	64	82	56	78	95	90	88	97	88	74	72	118	89	1091
		CWS	11	5	10	8	16	4	15	10	10	9	8	11	12	129
		Total	75	87	66	86	111	94	103	107	98	83	80	129	101	1220
	Union East	CPS	88	87	108	75	104	98	96	88	90	78	69	95	80	1156
		CWS	9	15	8	9	14	10	13	19	11	13	14	10	12	157
		Total	97	102	116	84	118	108	109	107	101	91	83	105	92	1313
	Union West	CPS	95	79	67	108	115	98	105	89	71	76	87	105	90	1185
		CWS	10	9	8	12	19	17	15	7	11	9	15	14	18	164
		Total	105	88	75	120	134	115	120	96	82	85	102	119	108	1349
	County Totals	CPS	247	248	231	261	314	286	289	274	249	228	228	318	259	3432
		CWS	30	29	26	29	49	31	43	36	32	31	37	35	42	450
		Total	277	277	257	290	363	317	332	310	281	259	265	353	301	3882
WARREN	Warren	CPS	86	62	77	77	103	71	77	78	70	68	88	86	1015	
		CWS	7	5	9	6	18	8	9	7	3	10	12	5	8	107
		Total	93	67	86	83	121	79	86	85	73	78	100	91	80	1122
	County Totals	CPS	86	62	77	77	103	71	77	78	70	68	88	86	1015	
		CWS	7	5	9	6	18	8	9	7	3	10	12	5	8	107
		Total	93	67	86	83	121	79	86	85	73	78	100	91	80	1122
County CPS Referral Total		CPS	4,508	4,417	4,107	4,653	5,532	4,451	4,987	4,619	4,085	3,923	4,588	5,084	4,599	59,553
County CWS Referral Total		CWS	506	520	484	588	675	593	615	558	542	556	646	690	726	7,699
County Referral Total		Total	5,014	4,937	4,591	5,241	6,207	5,044	5,602	5,177	4,627	4,479	5,234	5,774	5,325	67,252
Central Region IAIU	CPS	31	37	32	43	54	35	60	32	38	35	47	50	56	550	
	CWS	0	0	0	0	0	0	0	0	0	0	0	0	0	0	
	Total	31	37	32	43	54	35	60	32	38	35	47	50	56	550	
Metro Region IAIU	CPS	26	21	27	36	35	35	41	41	22	23	34	54	33	428	
	CWS	0	0	0	0	0	0	0	0	0	0	0	0	0	0	
	Total	26	21	27	36	35	35	41	41	22	23	34	54	33	428	
Northern Region IAIU	CPS	44	41	28	40	50	38	52	40	32	33	42	50	50	540	
	CWS	0	1	0	0	0	0	0	0	0	0	0	0	0	1	
	Total	44	42	28	40	50	38	52	40	32	33	42	50	50	541	
Southern Region IAIU	CPS	33	42	35	46	59	46	48	56	56	27	50	69	50	617	
	CWS	0	0	0	0	0	0	0	0	0	0	0	0	0	0	
	Total	33	42	35	46	59	46	48	56	56	27	50	69	50	617	
IAIU CPS Subtotal		CPS	134	141	122	165	198	154	201	169	148	118	173	223	189	2,135
IAIU CWS Subtotal		CWS	0	1	0	0	0	0	0	0	0	0	0	0	1	
IAIU Subtotal		Total	134	142	122	165	198	154	201	169	148	118	173	223	189	2,136
County and IAIU CPS Subtotal		CPS	4,642	4,558	4,229	4,818	5,730	4,605	5,188	4,788	4,233	4,041	4,761	5,307	4,788	61,688
County and IAIU CWS Subtotal		CWS	506	521	484	588	675	593	615	558	542	556	646	690	726	7,700
Unable to Determine(1)		Total	82	78	84	92	102	107	72	103	90	93	80	84	99	1,166
Other Offices		Total	0	1	0	4	0	0	0	3	2	2	3	0	1	16
Grand Total		Total	5,230	5,158	4,797	5,502	6,507	5,305	5,875	5,452	4,867	4,692	5,490	6,081	5,614	70,570

(1) CPS Reports or CWS Referrals not assigned to an office through the Assignment Designee, but were assigned to an office for an assessment or investigation.