



NEW JERSEY DEPARTMENT OF
CHILDREN AND FAMILIES

Child Protection and Permanency

Monthly Screening and Investigation Report December 2022

Christine Norbut Beyer, MSW
Commissioner



Table of Contents

Table 1: NJ State Central Registry Activity: Monthly Child Abuse and Neglect Hotline Calls, Intakes and Assignments to Child Protection & Permanency (CP&P) Offices

Chart 1: CP&P Annual Trends in Child Protection Services (CPS) Reports and Child Welfare Services (CWS) Referrals

Table 2: Assignments to CP&P Offices: CPS Reports and CWS Referrals

Table 3: Source of CPS Reports and CWS Referrals

Table 4: Monthly Count of CPS Reports and CWS Referrals Assigned to Counties

Table 5: Monthly Count of CPS Reports and CWS Referrals Assigned to CP&P Local Offices

Table 1: NJ State Central Registry Activity: Monthly Child Abuse and Neglect Hotline Calls, Intakes and Assignments to CP&P Offices^{1,2,7}

2021-2022	Hotline Call Activity				Intakes Recorded in NJ SPIRIT ^{6,8}														Assignments to CP&P Offices				
	Total Calls to SCR ³	Abandon Calls ⁴	Average Time to Answer (seconds)	Resulting NJS Intakes ⁵	CPS Reports		CWS Referrals		No Action Required (NAR)		Related Information (RI)		Information & Referral (I&R)		Information Only (IO)		Unusual Incident (UIRS)		CPS Reports		CWS Referrals		Total
					n	%	n	%	n	%	n	%	n	%	n	%	n	%	n	%	n	%	
December 2021	12,921	1,426	222	12,594	4,601	36.5%	558	4.4%	157	1.2%	2,746	21.8%	2,858	22.7%	1,660	13.2%	14	0.1%	4,601	89.2%	557	10.8%	5,158
January 2022	11,733	942	163	11,798	4,274	36.2%	524	4.4%	116	1.0%	2,561	21.7%	2,641	22.4%	1,672	14.2%	10	0.1%	4,274	89.1%	523	10.9%	4,797
February 2022	13,523	1,838	304	12,923	4,867	37.7%	632	4.9%	168	1.3%	2,732	21.1%	2,990	23.1%	1,524	11.8%	10	0.1%	4,867	88.5%	635	11.5%	5,502
March 2022	15,347	1,916	281	14,886	5,781	38.8%	727	4.9%	207	1.4%	2,946	19.8%	3,468	23.3%	1,750	11.8%	7	0.0%	5,780	88.8%	727	11.2%	6,507
April 2022	13,145	2,124	398	12,290	4,669	38.0%	637	5.2%	168	1.4%	2,486	20.2%	2,786	22.7%	1,537	12.5%	7	0.1%	4,669	88.0%	636	12.0%	5,305
May 2022	13,609	1,526	201	13,433	5,228	38.9%	644	4.8%	177	1.3%	2,804	20.9%	2,967	22.1%	1,604	11.9%	9	0.1%	5,228	89.0%	647	11.0%	5,875
June 2022	13,105	1,997	325	12,478	4,854	38.9%	597	4.8%	196	1.6%	2,678	21.5%	2,580	20.7%	1,569	12.6%	4	0.0%	4,854	89.0%	598	11.0%	5,452
July 2022	11,225	1,022	164	11,445	4,277	37.4%	590	5.2%	155	1.4%	2,712	23.7%	1,956	17.1%	1,749	15.3%	6	0.1%	4,277	87.9%	590	12.1%	4,867
August 2022	10,651	841	101	16,623	4,103	24.7%	589	3.5%	164	1.0%	2,465	14.8%	4,070	24.5%	5,202	31.3%	30	0.2%	4,103	87.4%	589	12.6%	4,692
September 2022	12,502	1,199	129	12,828	4,810	37.5%	681	5.3%	178	1.4%	2,818	22.0%	2,724	21.2%	1,614	12.6%	3	0.0%	4,810	87.6%	680	12.4%	5,490
October 2022	13,496	1,226	142	16,804	5,356	31.9%	724	4.3%	178	1.1%	3,153	18.8%	4,212	25.1%	3,160	18.8%	21	0.1%	5,356	88.1%	725	11.9%	6,081
November 2022	12,599	1,217	156	12,974	4,852	37.4%	762	5.9%	189	1.5%	2,998	23.1%	2,658	20.5%	1,509	11.6%	6	0.0%	4,852	86.4%	762	13.6%	5,614
December 2022	11,707	673	88	12,589	4,560	36.2%	730	5.8%	125	1.0%	2,922	23.2%	2,471	19.6%	1,579	12.5%	2	0.0%	4,760	86.7%	731	13.3%	5,491
	12,736	1,381	206	13,359	4,787	35.8%	646	4.8%	168	1.3%	2,771	20.7%	2,952	22.1%	2,010	15.0%	10	0.1%	4,560	83.7%	730	13.4%	5,449
Overall Total	12,736	1,381		173,665	62,232		8,395		2,178		36,021		38,381		26,129		129		62,431	88.1%	8,400	11.9%	70,831

¹Comes from three distinct sources: (1) the Automatic Call Distribution (ACD) phone system; which keeps a count of the number of calls and call routing; (2) Monthly NJSpirit Intakes; which record decision making on calls received by hotline screeners, and (3)

²The number of Intakes, CPS Reports, and CWS Referrals are based on an extract from NJSpirit.

Data extracted by the Office of Research, Evaluation, and Reporting on **January 09, 2023** includes all Intakes, CPS Reports, and CWS Referrals received from **December 01, 2022** through **December 31, 2022**.

³The number calls received through the ACD System that were directed to a screener from any call-in phone number.

⁴The number of calls received through the ACD System that are abandoned either while waiting in queue or while ringing.

⁵The number of Intakes entered in NJSpirit from the number of calls received.

⁶The number of Intakes recorded in NJSpirit, by type of Intake. There is not a one-to-one relationship between an ACD call and an Intake; multiple calls to State Central Registry (SCR) may result in a single Intake, or one call may result in multiple Intakes.

⁷Intake: The process of documenting: a report of alleged abuse or neglect of a child (CPS); a request for services on behalf of a child, or a referral of a child for services (CWS); a call in which the caller provides additional or clarifying information about a current

CP&P Annual Trends in CPS Reports and CWS Referrals

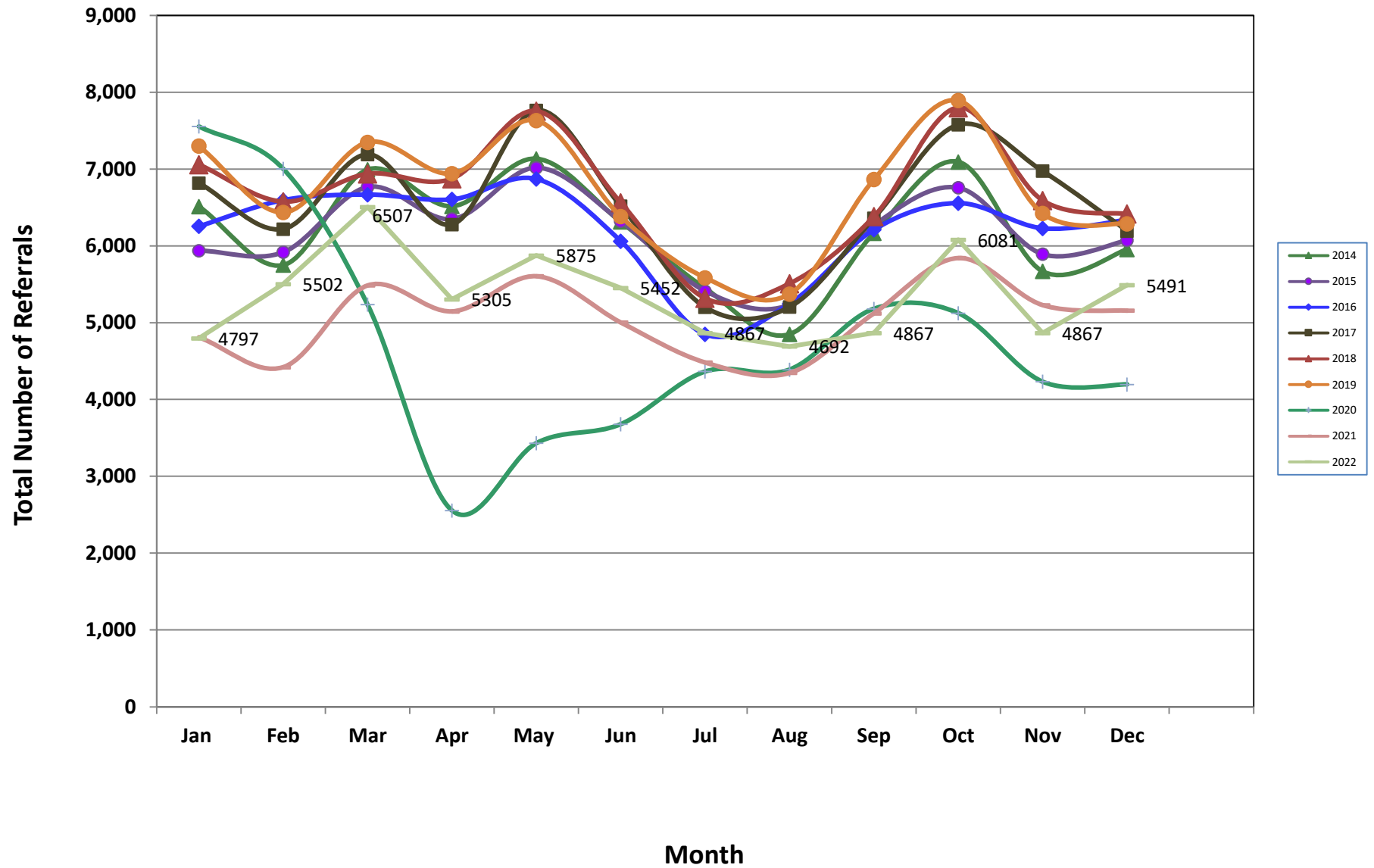


Table 2: Assignments to CP&P Offices: CPS Reports and CWS Referrals¹

Intake Date ³		CPS Reports ²	CWS Referrals ²	Total Assignments ²
2017	Jan 2017	5,111	1,708	6,819
	Feb 2017	4,716	1,504	6,220
	Mar 2017	5,349	1,843	7,192
	Apr 2017	4,790	1,490	6,280
	May 2017	5,847	1,919	7,766
	Jun 2017	4,853	1,665	6,518
	Jul 2017	3,814	1,389	5,203
	Aug 2017	3,866	1,340	5,206
	Sep 2017	4,719	1,643	6,362
	Oct 2017	5,613	1,966	7,579
	Nov 2017	5,223	1,753	6,976
	Dec 2017	4,601	1,594	6,195
	Total	58,502	19,814	78,316
2018	Jan 2018	5,276	1,784	7,060
	Feb 2018	4,933	1,644	6,577
	Mar 2018	5,212	1,727	6,939
	Apr 2018	5,275	1,601	6,876
	May 2018	5,920	1,836	7,756
	Jun 2018	4,948	1,615	6,563
	Jul 2018	4,011	1,308	5,319
	Aug 2018	4,102	1,408	5,510
	Sep 2018	4,748	1,634	6,382
	Oct 2018	5,790	2,011	7,801
	Nov 2018	4,973	1,620	6,593
	Dec 2018	4,891	1,527	6,418
	Total	60,079	19,715	79,794
2019	Jan 2019	5,443	1,858	7,301
	Feb 2019	4,811	1,628	6,439
	Mar 2019	5,677	1,824	7,501
	Apr 2019	5,313	1,630	6,943
	May 2019	5,853	1,781	7,634
	Jun 2019	4,874	1,509	6,383
	Jul 2019	4,277	1,309	5,586
	Aug 2019	4,068	1,306	5,374
	Sep 2019	5,315	1,551	6,866
	Oct 2019	5,968	1,926	7,894
	Nov 2019	4,991	1,432	6,423
	Dec 2019	4,855	1,434	6,289
	Total	61,445	19,188	80,633

Table 2: Assignments to CP&P Offices: CPS Reports and CWS Referrals¹

Intake Date ³		CPS Reports ²	CWS Referrals ²	Total Assignments ²
2020	Jan 2020	5,715	1,842	7,557
	Feb 2020	5,380	1,624	7,004
	Mar 2020	4,172	1,065	5,237
	Apr 2020	2,149	407	2,556
	May 2020	2,897	537	3,434
	Jun 2020	3,045	636	3,681
	Jul 2020	3,628	738	4,366
	Aug 2020	3,569	822	4,391
	Sep 2020	4,153	1,030	5,183
	Oct 2020	4,257	868	5,125
	Nov 2020	3,564	670	4,234
	Dec 2020	3,517	681	4,198
	Total	46,046	10,920	56,966
2021	Jan 2021	4,018	794	4,812
	Feb 2021	3,767	655	4,422
	Mar 2021	4,657	830	5,487
	Apr 2021	4,398	750	5,148
	May 2021	4,870	736	5,606
	Jun 2021	4,412	592	5,004
	Jul 2021	3,914	570	4,484
	Aug 2021	3,866	482	4,348
	Sep 2021	4,559	564	5,123
	Oct 2021	5,213	630	5,843
	Nov 2021	4,689	541	5,230
	Dec 2021	4,601	557	5,158
	Total	52,964	7,701	60,665
2022	Jan 2022	4,274	523	4,797
	Feb 2022	4,867	635	5,502
	Mar 2022	5,780	727	6,507
	Apr 2022	4,669	636	5,305
	May 2022	5,228	647	5,875
	Jun 2022	4,854	598	5,452
	Jul 2022	4,277	590	4,867
	Aug 2022	4,103	589	4,692
	Sep 2022	4,810	680	5,490
	Oct 2022	5,356	725	6,081
	Nov 2022	4,852	762	5,614
	Dec 2022	4,760	731	5,491
	Total	57,830	7,843	65,673
Grand Total		336,866	85,181	422,047

¹Source of Data: NJ SPIRIT

²A CPS Report or a CWS Referral may include multiple children in a family, with one or more allegation or request for services. In these cases, each CPS Report or CWS Referral is counted once - the CPS Report or the CWS Referral is the unit of analysis rather than the child.

³Prior to January 2014, the number of CPS Reports and CWS Referrals was based on the type of assignment of the CPS Report or CWS Referral. Beginning in January 2014, the number of CPS Reports and CWS Referrals is based on the number of CPS Reports and CWS Referrals received.

Table 3: Source of CPS Reports and CWS Referrals

CPS Reports and CWS Referrals	Source	Dec 2021	Jan 2022	Feb 2022	Mar 2022	Apr 2022	May 2022	Jun 2022	Jul 2022	Aug 2022	Sep 2022	Oct 2022	Nov 2022	Dec 2022		13 Month Total	
	School Staff	1,252	983	1,549	1,998	1,227	1,456	929	162	91	1,130	1,602	1,394	1,302	24%	15,075	21%
	Healthcare Provider	706	746	750	895	728	763	786	787	777	747	843	825	836	15%	10,189	14%
	Law Enforcement	1,341	1,238	1,234	1,478	1,373	1,513	1,549	1,624	1,617	1,421	1,514	1,422	1,416	26%	18,740	26%
	Government Agency	209	212	253	261	261	233	262	276	260	243	258	240	231	4%	3,199	5%
	Parent	378	347	349	380	333	383	399	420	413	421	426	342	383	7%	4,974	7%
	Relative/Friend/Neighbor	342	337	275	298	301	344	318	380	346	337	296	313	291	5%	4,178	6%
	Anonymous	367	366	461	471	410	527	493	437	458	502	480	458	416	8%	5,846	8%
	CP&P	49	54	56	75	62	42	53	53	46	57	49	45	42	1%	683	1%
	Court/Legal	89	100	108	144	140	116	136	144	147	139	135	113	122	2%	1,633	2%
	Community Group/Individual	144	158	183	198	176	201	205	235	211	180	158	165	163	3%	2,377	3%
	Facility Staff (incl Correctional Facility)	53	54	56	55	59	62	59	59	52	35	44	45	43	1%	676	1%
	Child (Self)	30	29	29	25	25	18	28	30	34	33	21	25	24	0%	351	0%
	Other	182	160	183	209	188	194	222	241	216	224	233	199	208	4%	2,659	4%
	Daycare/Babysitter	16	13	16	20	22	23	13	19	24	21	22	28	14	0%	251	0%
Total	5,158	4,797	5,502	6,507	5,305	5,875	5,452	4,867	4,692	5,490	6,081	5,614	5,491		70,831		

Table 4: Monthly Count of CPS Reports and CWS Referrals Assigned to Counties

County														Average Number of Assignments Last 13 Months	Nov 22 to Dec 22 Numerical Difference
	Dec 2021	Jan 2022	Feb 2022	Mar 2022	Apr 2022	May 2022	Jun 2022	Jul 2022	Aug 2022	Sep 2022	Oct 2022	Nov 2022	Dec 2022		
Atlantic	215	189	245	268	222	250	233	197	217	236	256	197	243	229	46
Bergen	360	290	354	425	348	327	349	305	276	315	356	350	344	337	-6
Burlington	270	264	283	359	255	300	292	284	240	305	314	332	288	293	-44
Camden	419	404	449	542	458	474	422	385	415	511	499	472	461	458	-11
Cape May	70	62	59	74	62	68	69	76	78	80	81	69	63	70	-6
Cumberland	190	149	160	202	166	206	182	180	166	174	195	183	185	179	2
Essex	489	456	550	647	532	581	517	477	497	528	590	562	547	540	-15
Gloucester	204	216	195	257	217	218	206	211	190	222	221	248	235	220	-13
Hudson	321	341	392	415	324	409	327	323	242	356	352	342	370	349	28
Hunterdon	44	40	33	55	46	38	56	29	32	52	54	49	39	44	-10
Mercer	230	189	229	263	217	258	229	239	232	236	294	240	227	238	-13
Middlesex	408	356	464	520	388	432	404	283	308	409	436	422	406	402	-16
Monmouth	294	260	288	342	297	332	286	236	266	289	317	317	277	292	-40
Morris	176	193	193	213	180	216	205	165	171	190	230	179	195	194	16
Ocean	333	304	305	370	332	372	375	340	320	356	391	352	341	347	-11
Passaic	330	274	354	415	347	385	350	295	264	323	396	326	348	340	22
Salem	57	65	74	84	55	81	53	62	67	70	60	64	73	67	9
Somerset	111	112	141	165	107	142	132	113	92	130	174	137	133	132	-4
Sussex	72	84	100	107	95	95	95	73	69	87	114	103	85	92	-18
Union	277	257	290	363	317	332	310	281	259	265	353	301	293	302	-8
Warren	67	86	83	121	79	86	85	73	78	100	91	80	81	87	55
County Subtotals	4,937	4,591	5,241	6,207	5,044	5,602	5,177	4,627	4,479	5,234	5,774	5,325	5,234	5,211	-91
Central Region IAIU	37	32	43	54	35	60	32	38	35	47	50	56	47	44	-9
Metro Region IAIU	21	27	36	35	35	41	41	22	23	34	54	33	25	34	-8
Northern Region IAIU	42	28	40	50	38	52	40	32	33	42	50	50	56	43	6
Southern Region IAIU	42	35	46	59	46	48	56	56	27	50	69	50	53	50	3
IAIU Subtotals	142	122	165	198	154	201	169	148	118	173	223	189	181	170	-8
¹ Unable to Determine	78	84	92	102	107	72	103	90	93	80	84	99	75	90	-24
Other Offices	1	0	4	0	0	0	3	2	2	3	0	1	1	1	0
Grand Total	5,158	4,797	5,502	6,507	5,305	5,875	5,452	4,867	4,692	5,490	6,081	5,614	5,491	5,473	-123

¹CPS Reports or CWS Referrals not assigned to an office through the Assignment Designee, but were assigned to an office for an assessment or investigation.



Table 5: Monthly Count of CPS Reports and CWS Referrals Assigned to CP&P Local Offices

County	Local Office	Type of Referral														
			Dec 2021	Jan 2022	Feb 2022	Mar 2022	Apr 2022	May 2022	Jun 2022	Jul 2022	Aug 2022	Sep 2022	Oct 2022	Nov 2022	Nov 2023	Dec 2022
ESSEX	Essex Central	CPS	68	57	69	78	89	83	77	73	79	85	89	70	70	73
		CWS	12	6	13	10	14	10	9	8	9	10	12	19	19	16
		Total	80	63	82	88	103	93	86	81	88	95	101	89	89	89
	Essex North	CPS	109	81	88	115	82	91	90	71	60	86	92	85	85	104
		CWS	8	13	10	6	7	11	6	13	5	8	16	13	13	15
		Total	117	94	98	121	89	102	96	84	65	94	108	98	98	119
	Essex South	CPS	62	65	89	123	82	106	86	77	83	66	90	87	87	93
		CWS	15	8	11	15	10	17	9	12	9	11	19	12	12	7
		Total	77	73	100	138	92	123	95	89	92	77	109	99	99	100
	Newark Center City	CPS	75	79	71	90	75	88	67	65	73	74	93	77	77	69
		CWS	13	2	8	9	9	9	10	9	10	8	14	13	13	12
		Total	88	81	79	99	84	97	77	74	83	82	107	90	90	81
	Newark Northeast	CPS	50	68	91	94	83	72	63	61	74	79	77	82	82	68
		CWS	5	8	13	14	5	6	7	10	11	14	8	16	16	14
		Total	55	76	104	108	88	78	70	71	85	93	85	98	98	82
	Newark South	CPS	65	55	79	88	65	76	80	68	75	73	74	76	76	68
		CWS	7	14	8	5	11	12	13	10	9	14	6	12	12	8
		Total	72	69	87	93	76	88	93	78	84	87	80	88	88	76
County Totals	CPS	429	405	487	588	476	516	463	415	444	463	515	477	477	475	
	CWS	60	51	63	59	56	65	54	62	53	65	75	85	85	72	
	Total	489	456	550	647	532	581	517	477	497	528	590	562	562	547	
GLOUCESTER	Gloucester East	CPS	90	86	84	107	79	88	81	90	78	74	75	100	100	97
		CWS	7	14	12	16	18	9	13	13	11	15	10	14	14	21
		Total	97	100	96	123	97	97	94	103	89	89	85	114	114	118
	Gloucester West	CPS	92	103	91	123	103	109	98	101	85	110	114	114	114	99
		CWS	15	13	8	11	17	12	14	7	16	23	22	20	20	18
		Total	107	116	99	134	120	121	112	108	101	133	136	134	134	117
	County Totals	CPS	182	189	175	230	182	197	179	191	163	184	189	214	214	196
		CWS	22	27	20	27	35	21	27	20	27	38	32	34	34	39
		Total	204	216	195	257	217	218	206	211	190	222	221	248	248	235
HUDSON	Hudson Central	CPS	70	78	93	99	74	131	82	90	75	93	82	89	89	85
		CWS	15	9	18	17	11	10	14	10	9	11	15	20	20	19
		Total	85	87	111	116	85	141	96	100	84	104	97	109	109	104
	Hudson North	CPS	81	90	98	108	65	74	70	69	48	86	88	69	69	80
		CWS	8	5	12	10	10	10	6	9	6	15	5	9	9	7
		Total	89	95	110	118	75	84	76	78	54	101	93	78	78	87
	Hudson South	CPS	59	62	69	74	63	80	74	61	40	70	59	53	53	70
		CWS	5	12	8	4	10	14	8	10	8	7	14	12	12	10
		Total	64	74	77	78	73	94	82	71	48	77	73	65	65	80
	Hudson West	CPS	77	76	87	90	84	84	66	67	47	65	80	76	76	82
		CWS	6	9	7	13	7	6	7	7	9	9	9	14	14	17
		Total	83	85	94	103	91	90	73	74	56	74	89	90	90	99
	County Totals	CPS	287	306	347	371	286	369	292	287	210	314	309	287	287	317
		CWS	34	35	45	44	38	40	35	36	32	42	43	55	55	53
		Total	321	341	392	415	324	409	327	323	242	356	352	342	342	370
HUNTERDON	Hunterdon	CPS	42	36	30	50	39	34	50	25	27	49	50	40	40	35
		CWS	2	4	3	5	7	4	6	4	5	3	4	9	9	4
		Total	44	40	33	55	46	38	56	29	32	52	54	49	49	39
	County Totals	CPS	42	36	30	50	39	34	50	25	27	49	50	40	40	35
		CWS	2	4	3	5	7	4	6	4	5	3	4	9	9	4
Total	44	40	33	55	46	38	56	29	32	52	54	49	49	39		
MERCER	Mercer North	CPS	95	87	99	129	91	131	111	103	103	122	130	108	108	106
		CWS	12	13	16	14	18	12	15	19	14	10	11	23	23	17
		Total	107	100	115	143	109	143	126	122	117	132	141	131	131	123
	Mercer South	CPS	108	76	107	106	100	96	93	104	99	90	129	98	98	96
		CWS	15	13	7	14	8	19	10	13	16	14	24	11	11	8
	Total	123	89	114	120	108	115	103	117	115	104	153	109	109	104	
	County Totals	CPS	203	163	206	235	191	227	204	207	202	212	259	206	206	202
		CWS	27	26	23	28	26	31	25	32	30	24	35	34	34	25
Total		230	189	229	263	217	258	229	239	232	236	294	240	240	227	

Data in this report is preliminary and may differ from any final report. This report is produced to ensure continuous quality improvement throughout DCF.



Table 5: Monthly Count of CPS Reports and CWS Referrals Assigned to CP&P Local Offices

County	Local Office	Type of Referral														
			Dec 2021	Jan 2022	Feb 2022	Mar 2022	Apr 2022	May 2022	Jun 2022	Jul 2022	Aug 2022	Sep 2022	Oct 2022	Nov 2022	Nov 2023	Dec 2022
SUSSEX	Sussex	CPS	67	77	89	98	84	85	77	65	64	78	100	89	89	75
		CWS	5	7	11	9	11	10	18	8	5	9	14	14	14	10
		Total	72	84	100	107	95	95	95	73	69	87	114	103	103	85
	County Totals	CPS	67	77	89	98	84	85	77	65	64	78	100	89	89	75
		CWS	5	7	11	9	11	10	18	8	5	9	14	14	14	10
		Total	72	84	100	107	95	95	73	69	87	114	103	103	85	
UNION	Union Central	CPS	82	56	78	95	90	88	97	88	74	72	118	89	89	88
		CWS	5	10	8	16	4	15	10	10	9	8	11	12	12	13
		Total	87	66	86	111	94	103	107	98	83	80	129	101	101	101
	Union East	CPS	87	108	75	104	98	96	88	90	78	69	95	80	80	66
		CWS	15	8	9	14	10	13	19	11	13	14	10	12	12	7
		Total	102	116	84	118	108	109	107	101	91	83	105	92	92	73
	Union West	CPS	79	67	108	115	98	105	89	71	76	87	105	90	90	96
		CWS	9	8	12	19	17	15	7	11	9	15	14	18	18	23
		Total	88	75	120	134	115	120	96	82	85	102	119	108	108	119
	County Totals	CPS	248	231	261	314	286	289	274	249	228	228	318	259	259	250
		CWS	29	26	29	49	31	43	36	32	31	37	35	42	42	43
		Total	277	257	290	363	317	332	310	281	259	265	353	301	301	293
	WARREN	Warren	CPS	62	77	77	103	71	77	78	70	68	88	86	72	72
CWS			5	9	6	18	8	9	7	3	10	12	5	8	8	12
Total			67	86	83	121	79	86	85	73	78	100	91	80	80	81
County Totals		CPS	62	77	77	103	71	77	78	70	68	88	86	72	72	69
		CWS	5	9	6	18	8	9	7	3	10	12	5	8	8	12
		Total	67	86	83	121	79	86	85	73	78	100	91	80	81	
County CPS Referral Total		CPS	4,417	4,107	4,653	5,532	4,451	4,987	4,619	4,085	3,923	4,588	5,084	4,599	4,599	4,534
County CWS Referral Total		CWS	520	484	588	675	593	615	558	542	556	646	690	726	726	700
County Referral Total		Total	4,937	4,591	5,241	6,207	5,044	5,602	5,177	4,627	4,479	5,234	5,774	5,325	5,325	5,234
Central Region IAIU	CPS	37	32	43	54	35	60	32	38	35	47	50	56	56	47	
	CWS	0	0	0	0	0	0	0	0	0	0	0	0	0	0	
	Total	37	32	43	54	35	60	32	38	35	47	50	56	56	47	
Metro Region IAIU	CPS	21	27	36	35	35	41	41	22	23	34	54	33	33	25	
	CWS	0	0	0	0	0	0	0	0	0	0	0	0	0	0	
	Total	21	27	36	35	35	41	41	22	23	34	54	33	33	25	
Northern Region IAIU	CPS	41	28	40	50	38	52	40	32	33	42	50	50	50	56	
	CWS	1	0	0	0	0	0	0	0	0	0	0	0	0	0	
	Total	42	28	40	50	38	52	40	32	33	42	50	50	50	56	
Southern Region IAIU	CPS	42	35	46	59	46	48	56	56	27	50	69	50	50	53	
	CWS	0	0	0	0	0	0	0	0	0	0	0	0	0	0	
	Total	42	35	46	59	46	48	56	56	27	50	69	50	50	53	
IAIU CPS Subtotal		CPS	141	122	165	198	154	201	169	148	118	173	223	189	189	181
IAIU CWS Subtotal		CWS	1	0	0	0	0	0	0	0	0	0	0	0	0	
IAIU Subtotal		Total	142	122	165	198	154	201	169	148	118	173	223	189	189	181
County and IAIU CPS Subtotal		CPS	4,558	4,229	4,818	5,730	4,605	5,188	4,788	4,233	4,041	4,761	5,307	4,788	4,788	4,715
County and IAIU CWS Subtotal		CWS	521	484	588	675	593	615	558	542	556	646	690	726	726	700
Unable to Determine(1)		Total	78	84	92	102	107	72	103	90	93	80	84	99	99	75
Other Offices		Total	1	0	4	0	0	0	3	2	2	3	0	1	1	1
Grand Total		Total	5,158	4,797	5,502	6,507	5,305	5,875	5,452	4,867	4,692	5,490	6,081	5,614	5,614	5,491

(1) CPS Reports or CWS Referrals not assigned to an office through the Assignment Designee, but were assigned to an office for an assessment or investigation.