



Child Protection and Permanency

Monthly Screening and Investigation Report April 2024

Christine Norbut Beyer, MSW
Commissioner

Table of Contents

Table 1: NJ State Central Registry Activity: Monthly Child Abuse and Neglect Hotline Calls, Intakes and Assignments to Child Protection & Permanency (CP&P) Offices

Chart 1: CP&P Annual Trends in Child Protection Services (CPS) Reports and Child Welfare Services (CWS) Referrals

Table 2: Assignments to CP&P Offices: CPS Reports and CWS Referrals

Table 3: Source of CPS Reports and CWS Referrals

Table 4: Monthly Count of CPS Reports and CWS Referrals Assigned to Counties

Table 5: Monthly Count of CPS Reports and CWS Referrals Assigned to CP&P Local Offices



Table 1: NJ State Central Registry Activity: Monthly Child Abuse and Neglect Hotline Calls, Intakes and Assignments to CP&P Offices^{1,2,7}

2023-2024	Hotline Call Activity				Intakes Recorded in NJ SPIRIT ^{6,8}														Assignments to CP&P Offices				
	Total Calls to SCR ³	Abandon Calls ⁴	Average Time to Answer (seconds)	Resulting NJS Intakes ⁵	CPS Reports		CWS Referrals		No Action Required (NAR)		Related Information (RI)		Information & Referral (I&R)		Information Only (IO)		Unusual Incident (UIRS)		CPS Reports		CWS Referrals		Total
					n	%	n	%	n	%	n	%	n	%	n	%	n	%	n	%	n	%	
April 2023	12,569	866	73	13,291	5,001	37.6%	870	6.5%	197	1.5%	3,068	23.1%	2,423	18.2%	1,728	13.0%	4	0.0%	5,001	85.2%	870	14.8%	5,871
May 2023	14,992	1,368	112	15,567	6,074	39.0%	1,053	6.8%	167	1.1%	3,347	21.5%	2,998	19.3%	1,921	12.3%	7	0.0%	6,074	85.2%	1,053	14.8%	7,127
June 2023	12,861	1,069	115	13,488	4,999	37.1%	955	7.1%	155	1.1%	3,075	22.8%	2,522	18.7%	1,778	13.2%	4	0.0%	4,999	84.0%	955	16.0%	5,954
July 2023	11,377	732	90	12,196	4,576	37.5%	834	6.8%	201	1.6%	2,828	23.2%	1,996	16.4%	1,758	14.4%	3	0.0%	4,576	84.6%	834	15.4%	5,410
August 2023	11,208	536	62	12,127	4,484	37.0%	978	8.1%	229	1.9%	2,656	21.9%	2,081	17.2%	1,692	14.0%	7	0.1%	4,484	82.0%	981	18.0%	5,465
September 2023	12,809	612	49	13,859	5,034	36.3%	1,000	7.2%	199	1.4%	3,166	22.8%	2,720	19.6%	1,739	12.5%	1	0.0%	5,034	83.4%	1,000	16.6%	6,034
October 2023	14,337	619	45	15,546	5,837	37.5%	1,131	7.3%	215	1.4%	3,454	22.2%	2,974	19.1%	1,935	12.4%	0	0.0%	5,837	83.8%	1,131	16.2%	6,968
November 2023	13,338	704	50	14,269	5,195	36.4%	934	6.5%	158	1.1%	3,214	22.5%	2,469	17.3%	2,297	16.1%	2	0.0%	5,195	84.8%	934	15.2%	6,129
December 2023	12,144	705	80	12,968	4,913	37.9%	967	7.5%	136	1.0%	2,939	22.7%	2,438	18.8%	1,572	12.1%	3	0.0%	4,913	83.6%	967	16.4%	5,880
January 2024	13,611	959	83	14,437	5,268	36.5%	1,108	7.7%	210	1.5%	3,339	23.1%	2,809	19.5%	1,703	11.8%	0	0.0%	5,268	82.6%	1,108	17.4%	6,376
February 2024	13,854	1,086	100	14,452	5,260	36.4%	1,082	7.5%	158	1.1%	3,241	22.4%	3,044	21.1%	1,665	11.5%	2	0.0%	5,257	82.9%	1,082	17.1%	6,339
March 2024	14,126	1,230	115	14,694	5,390	36.7%	1,082	7.4%	149	1.0%	3,279	22.3%	3,061	20.8%	1,723	11.7%	10	0.1%	5,296	83.0%	1,082	17.0%	6,378
April 2024	13,711	1,221	106	14,246	5,332	37.4%	1,066	7.5%	177	1.2%	2,967	20.8%	2,939	20.6%	1,762	12.4%	3	0.0%	5,262	83.6%	1,029	16.4%	6,291
<i>Averages</i>	13,149	901		13,934	5,182	37.2%	1,005	7.2%	181	1.3%	3,121	22.4%	2,652	19.0%	1,790	12.8%	4	0.0%	5,169	83.8%	1,002	16.2%	6,171
Overall Totals	170,937	11,707		181,140	67,363	37.2%	13,060	7.2%	2,351	1.3%	40,573	22.4%	34,474	19.0%	23,273	12.8%	46	0.0%	67,196	83.8%	13,026	16.2%	80,222

¹Comes from three distinct sources: (1) the Automatic Call Distribution (ACD) phone system; which keeps a count of the number of calls and call routing; (2) Monthly NJSpirit Intakes; which record decision making on calls received by hotline screeners, and (3) NJSpirit

²The number of Intakes, CPS Reports, and CWS Referrals are based on an extract from NJSpirit.

Data extracted by the Office of Research, Evaluation, and Reporting on **May 08, 2024** includes all Intakes, CPS Reports, and CWS Referrals received from **April 01, 2024 through April 30, 2024**.

³The number calls received through the ACD System that were directed to a screener from any call-in phone number.

⁴The number of calls received through the ACD System that are abandoned either while waiting in queue or while ringing.

⁵The number of Intakes entered in NJSpirit from the number of calls received.

⁶The number of Intakes recorded in NJSpirit, by type of Intake. There is not a one-to-one relationship between an ACD call and an Intake; multiple calls to State Central Registry (SCR) may result in a single Intake, or one call may result in multiple Intakes.

⁷Intake: The process of documenting: a report of alleged abuse or neglect of a child (CPS); a request for services on behalf of a child, or a referral of a child for services (CWS); a call in which the caller provides additional or clarifying information about a current service case or active investigation (RI); informing a caller of, or referring a caller to, services available from other private or public sources (I&R); a call that requires no action by CP&P (NAR); or a response to a simple inquiry (IO).

CP&P Annual Trends in CPS Reports and CWS Referrals

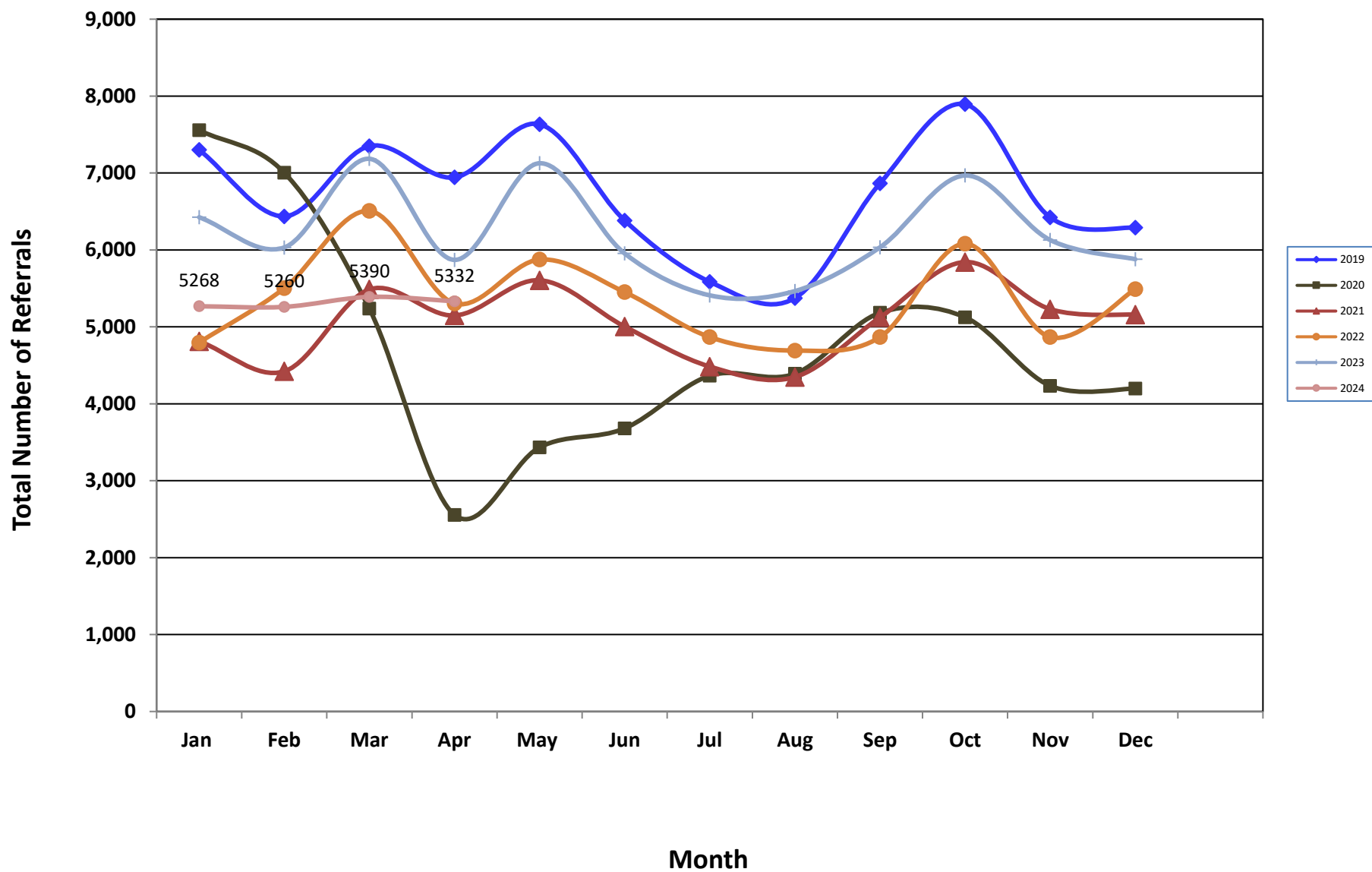


Table 2: Assignments to CP&P Offices: CPS Reports and CWS Referrals¹

Intake Date ³		CPS Reports ²	CWS Referrals ²	Total Assignments ²
2018	Jan 2018	5,276	1,784	7,060
	Feb 2018	4,933	1,644	6,577
	Mar 2018	5,212	1,727	6,939
	Apr 2018	5,275	1,601	6,876
	May 2018	5,920	1,836	7,756
	Jun 2018	4,948	1,615	6,563
	Jul 2018	4,011	1,308	5,319
	Aug 2018	4,102	1,408	5,510
	Sep 2018	4,748	1,634	6,382
	Oct 2018	5,790	2,011	7,801
	Nov 2018	4,973	1,620	6,593
	Dec 2018	4,891	1,527	6,418
	Total	60,079	19,715	79,794
2019	Jan 2019	5,443	1,858	7,301
	Feb 2019	4,811	1,628	6,439
	Mar 2019	5,677	1,824	7,501
	Apr 2019	5,313	1,630	6,943
	May 2019	5,853	1,781	7,634
	Jun 2019	4,874	1,509	6,383
	Jul 2019	4,277	1,309	5,586
	Aug 2019	4,068	1,306	5,374
	Sep 2019	5,315	1,551	6,866
	Oct 2019	5,968	1,926	7,894
	Nov 2019	4,991	1,432	6,423
	Dec 2019	4,855	1,434	6,289
	Total	61,445	19,188	80,633
2020	Jan 2020	5,715	1,842	7,557
	Feb 2020	5,380	1,624	7,004
	Mar 2020	4,172	1,065	5,237
	Apr 2020	2,149	407	2,556
	May 2020	2,897	537	3,434
	Jun 2020	3,045	636	3,681
	Jul 2020	3,628	738	4,366
	Aug 2020	3,569	822	4,391
	Sep 2020	4,153	1,030	5,183
	Oct 2020	4,257	868	5,125
	Nov 2020	3,564	670	4,234
	Dec 2020	3,517	681	4,198
	Total	46,046	10,920	56,966

Table 2: Assignments to CP&P Offices: CPS Reports and CWS Referrals¹

Intake Date ³		CPS Reports ²	CWS Referrals ²	Total Assignments ²
2021	Jan 2021	4,018	794	4,812
	Feb 2021	3,767	655	4,422
	Mar 2021	4,657	830	5,487
	Apr 2021	4,398	750	5,148
	May 2021	4,870	736	5,606
	Jun 2021	4,412	592	5,004
	Jul 2021	3,914	570	4,484
	Aug 2021	3,866	482	4,348
	Sep 2021	4,559	564	5,123
	Oct 2021	5,213	630	5,843
	Nov 2021	4,689	541	5,230
	Dec 2021	4,601	557	5,158
	Total	52,964	7,701	60,665
2022	Jan 2022	4,274	523	4,797
	Feb 2022	4,867	635	5,502
	Mar 2022	5,780	727	6,507
	Apr 2022	4,669	636	5,305
	May 2022	5,228	647	5,875
	Jun 2022	4,854	598	5,452
	Jul 2022	4,277	590	4,867
	Aug 2022	4,103	589	4,692
	Sep 2022	4,810	680	5,490
	Oct 2022	5,356	725	6,081
	Nov 2022	4,852	762	5,614
	Dec 2022	4,760	731	5,491
	Total	57,830	7,843	65,673
2023	Jan 2023	5,461	962	6,423
	Feb 2023	5,141	891	6,032
	Mar 2023	6,064	1,121	7,185
	Apr 2023	5,001	870	5,871
	May 2023	6,074	1,053	7,127
	Jun 2023	4,999	955	5,954
	Jul 2023	4,576	834	5,410
	Aug 2023	4,484	981	5,465
	Sep 2023	5,034	1,000	6,034
	Oct 2023	5,837	1,131	6,968
	Nov 2023	5,195	934	6,129
	Dec 2023	4,913	967	5,880
	Total	62,779	11,699	74,478
	Jan 2024	5,268	1,108	6,376
	Feb 2024	5,260	1,082	6,342
	Mar 2024	5,390	1,082	6,472
	Apr 2024	5,332	1,066	6,398

Data in this report is preliminary and may differ from any final report. This report is produced to ensure continuous quality improvement throughout DCF.

2024	May 2024			
	Jun 2024			
	Jul 2024			
	Aug 2024			
	Sep 2024			
	Oct 2024			
	Nov 2024			
	Dec 2024			
	Total	21,250	4,338	25,588
Grand Total		362,393	81,404	443,797

¹Source of Data: NJ SPIRIT

²A CPS Report or a CWS Referral may include multiple children in a family, with one or more allegation or request for services. In these cases, each CPS Report or CWS Referral is counted once - the CPS Report or the CWS Referral is the unit of analysis rather than the child.

³Prior to January 2014, the number of CPS Reports and CWS Referrals was based on the type of assignment of the CPS Report or CWS Referral. Beginning in January 2014, the number of CPS Reports and CWS Referrals is based on the number of CPS Reports and CWS Referrals received.



Table 3: Source of CPS Reports and CWS Referrals

	Source	Apr 2023	May 2023	Jun 2023	Jul 2023	Aug 2023	Sep 2023	Oct 2023	Nov 2023	Dec 2023	Jan 2024	Feb 2024	Mar 2024	Apr 2024		13 Month Total	
CPS Reports and CWS Referrals	School Staff	1,242	1,923	885	246	136	1,203	1,990	1,596	1,494	1,704	1,837	1,881	1,605	25%	17,742	22%
	Healthcare Provider	893	916	910	884	940	793	868	785	806	907	858	897	921	14%	11,378	14%
	Law Enforcement	1,566	1,820	1,782	1,928	1,775	1,737	1,744	1,573	1,654	1,602	1,598	1,665	1,687	26%	22,131	28%
	Government Agency	261	316	310	294	392	343	295	305	284	316	282	249	314	5%	3,961	5%
	Parent	439	460	459	435	540	488	485	447	399	428	402	405	437	7%	5,824	7%
	Relative/Friend/Neighbor	331	413	376	377	410	343	348	300	344	296	308	293	323	5%	4,462	6%
	Anonymous	435	544	476	452	431	471	530	440	458	394	423	487	445	7%	5,986	7%
	CP&P	57	64	67	62	68	69	59	54	67	57	56	56	58	1%	794	1%
	Court/Legal	114	145	140	116	144	109	120	99	121	90	114	116	148	2%	1,576	2%
	Community Group/Individual	171	187	218	229	233	180	199	189	167	144	169	145	153	2%	2,384	3%
	Facility Staff (incl Correctional Facility)	65	71	56	59	67	49	49	45	59	47	47	45	59	1%	718	1%
	Child (Self)	31	42	36	28	33	37	38	38	20	18	24	24	30	0%	399	0%
	Other	246	208	223	271	275	182	222	232	167	183	202	182	188	3%	2,781	3%
	Daycare/Babysitter	20	18	16	29	21	30	21	26	16	14	22	27	30	0%	290	0%
Total	5,871	7,127	5,954	5,410	5,465	6,034	6,968	6,129	6,056	6,200	6,342	6,472	6,398		80,426		

Data in this report is preliminary and may differ from any final report. This report is produced to ensure continuous quality improvement throughout DCF.



Table 4: Monthly Count of CPS Reports and CWS Referrals Assigned to Counties

County														Average Number of Assignments Last 13 Months	Numerical Difference
	Apr 2023	May 2023	Jun 2023	Jul 2023	Aug 2023	Sep 2023	Oct 2023	Nov 2023	Dec 2023	Jan 2024	Feb 2024	Mar 2024	Apr 2024		
Atlantic	255	296	258	265	232	258	333	273	263	247	262	243	317	269	74
Bergen	321	418	357	305	312	339	430	400	374	455	360	337	364	367	27
Burlington	301	340	285	273	305	310	374	333	282	288	300	306	333	310	27
Camden	483	556	502	449	463	487	535	513	449	513	493	449	491	491	42
Cape May	73	92	71	61	64	71	71	64	71	63	63	64	74	69	10
Cumberland	191	226	208	179	208	174	207	211	199	223	207	230	214	206	-16
Essex	568	739	566	530	569	639	692	584	585	644	653	681	628	621	-53
Gloucester	225	286	239	232	246	244	298	238	246	242	255	238	244	249	6
Hudson	384	451	386	337	345	406	436	395	336	391	471	470	391	400	-79
Hunterdon	37	47	46	60	38	38	53	47	42	44	63	47	50	47	3
Mercer	277	286	249	252	264	261	368	256	306	274	308	328	306	287	-22
Middlesex	389	526	420	376	398	436	466	429	434	489	466	502	489	448	-13
Monmouth	294	348	308	307	271	279	362	295	291	350	304	331	349	315	18
Morris	203	224	219	201	166	219	226	242	202	250	237	262	226	221	-36
Ocean	388	450	400	344	357	402	405	409	378	402	379	381	374	390	-7
Passaic	405	510	425	313	320	422	462	374	383	401	379	390	390	398	0
Salem	68	81	58	68	58	63	84	65	66	69	83	75	67	70	-8
Somerset	146	174	152	116	119	147	176	126	140	148	145	156	133	144	-23
Sussex	90	129	108	100	97	95	104	93	105	105	101	98	119	103	21
Union	328	404	322	296	292	302	360	343	314	330	349	394	350	337	-44
Warren	111	113	89	95	92	94	88	104	87	113	103	108	97	100	-11
County Subtotals	5,537	6,696	5,668	5,159	5,216	5,686	6,530	5,794	5,553	6,041	5,981	6,090	6,006	5,843	-84
Central Region IAIU	64	89	57	49	58	47	82	60	80	71	70	86	68	68	-18
Metro Region IAIU	32	67	43	32	32	58	86	68	61	59	58	82	57	57	-26
Northern Region IAIU	63	81	33	29	20	59	71	50	50	41	59	55	51	51	-4
Southern Region IAIU	66	84	62	59	66	79	86	71	69	80	89	81	74	74	-7
IAIU Subtotals	225	321	195	169	176	243	325	249	260	251	276	304	250	250	-55
¹ Unable to Determine	102	107	89	81	73	105	109	86	62	81	82	77	105	89	28
Other Offices	7	3	2	1	0	0	4	0	5	3	3	1	0	2	-1
Grand Total	5,871	7,127	5,954	5,410	5,465	6,034	6,968	6,129	5,880	6,376	6,342	6,472	6,361	6,184	-112

¹CPS Reports or CWS Referrals not assigned to an office through the Assignment Designee, but were assigned to an office for an assessment or investigation.

Table 5: Monthly Count of CPS Reports and CWS Referrals Assigned to CP&P Local Offices

County	Local Office	Type of Referral													Total	
			Apr 2023	May 2023	Jun 2023	Jul 2023	Aug 2023	Sep 2023	Oct 2023	Nov 2023	Dec 2023	Jan 2024	Feb 2024	Mar 2024		Apr 2024
ATLANTIC	Atlantic East	CPS	110	130	105	114	101	125	138	112	99	107	121	109	139	1,510
		CWS	23	26	24	28	27	26	41	33	26	33	25	29	41	382
		Total	133	156	129	142	128	151	179	145	125	140	146	138	180	1,892
	Atlantic West	CPS	100	126	106	102	81	87	126	112	123	84	96	91	116	1,350
		CWS	22	14	23	21	23	20	28	16	15	23	20	14	21	260
		Total	122	140	129	123	104	107	154	128	138	107	116	105	137	1,610
	County Totals	CPS	210	256	211	216	182	212	264	224	222	191	217	200	255	2,860
		CWS	45	40	47	49	50	46	69	49	41	56	45	43	62	642
		Total	255	296	258	265	232	258	333	273	263	247	262	243	317	3,502
BERGEN	Bergen Central	CPS	116	139	144	105	107	120	149	150	129	176	131	123	110	1,699
		CWS	19	24	27	14	15	33	22	29	27	40	28	31	28	337
		Total	135	163	171	119	122	153	171	179	156	216	159	154	138	2,036
	Bergen South	CPS	151	215	166	155	155	166	224	192	174	193	161	155	185	2,292
		CWS	35	40	20	31	35	20	35	29	44	46	40	28	41	444
		Total	186	255	186	186	190	186	259	221	218	239	201	183	226	2,736
	County Totals	CPS	267	354	310	260	262	286	373	342	303	369	292	278	295	3,991
		CWS	54	64	47	45	50	53	57	58	71	86	68	59	69	781
		Total	321	418	357	305	312	339	430	400	374	455	360	337	364	4,772
BURLINGTON	Burlington East	CPS	115	150	109	112	126	116	149	136	108	133	115	130	129	1,628
		CWS	34	20	26	26	19	24	29	30	34	19	28	31	28	348
		Total	149	170	135	138	145	140	178	166	142	152	143	161	157	1,976
	Burlington West	CPS	135	146	124	109	127	134	156	126	110	108	129	114	151	1,669
		CWS	17	24	26	26	33	36	40	41	30	28	28	31	25	385
		Total	152	170	150	135	160	170	196	167	140	136	157	145	176	2,054
	County Totals	CPS	250	296	233	221	253	250	305	262	218	241	244	244	280	3,297
		CWS	51	44	52	52	52	60	69	71	64	47	56	62	53	733
		Total	301	340	285	273	305	310	374	333	282	288	300	306	333	4,030
CAMDEN	Camden Central	CPS	96	123	118	102	112	98	110	106	89	94	105	102	100	1,355
		CWS	26	22	24	22	18	32	28	22	24	29	27	20	26	320
		Total	122	145	142	124	130	130	138	128	113	123	132	122	126	1,675
	Camden East	CPS	106	124	91	87	94	115	111	95	93	96	99	95	108	1,314
		CWS	16	16	19	29	18	25	20	12	31	36	31	15	22	290
		Total	122	140	110	116	112	140	131	107	124	132	130	110	130	1,604
	Camden North	CPS	108	101	110	76	92	95	107	114	98	105	111	95	94	1,306
		CWS	16	17	26	25	29	16	30	27	19	28	23	22	25	303
		Total	124	118	136	101	121	111	137	141	117	133	134	117	119	1,609
	Camden South	CPS	94	122	91	86	83	90	112	114	83	103	85	81	92	1,236
		CWS	21	31	23	22	17	16	17	23	12	22	12	19	24	259
		Total	115	153	114	108	100	106	129	137	95	125	97	100	116	1,495
	County Totals	CPS	404	470	410	351	381	398	440	429	363	398	400	373	394	5,211
		CWS	79	86	92	98	82	89	95	84	86	115	93	76	97	1,172
		Total	483	556	502	449	463	487	535	513	449	513	493	449	491	6,383
CAPE MAY	Cape May	CPS	57	73	52	55	53	56	62	56	59	53	48	52	66	742
		CWS	16	19	19	6	11	15	9	8	12	10	15	12	8	160
		Total	73	92	71	61	64	71	71	64	71	63	63	64	74	902
	County Totals	CPS	57	73	52	55	53	56	62	56	59	53	48	52	66	742
		CWS	16	19	19	6	11	15	9	8	12	10	15	12	8	160
Total	73	92	71	61	64	71	71	64	71	63	63	64	74	902		
CUMBERLAND	Cumberland East	CPS	58	78	62	71	85	58	78	72	53	75	68	72	81	911
		CWS	9	18	24	11	14	10	8	10	18	23	19	18	10	192
		Total	67	96	86	82	99	68	86	82	71	98	87	90	91	1,103
	Cumberland West	CPS	103	120	97	83	89	87	98	117	107	107	102	109	111	1,330
		CWS	21	10	26	14	20	19	23	12	21	18	18	31	12	245
		Total	124	130	123	97	109	106	121	129	128	125	120	140	123	1,575
	County Totals	CPS	161	198	159	154	174	145	176	189	160	182	170	181	192	2,241
		CWS	30	28	50	25	34	29	31	22	39	41	37	49	22	437
Total	191	226	209	179	208	174	207	211	199	223	207	230	214	2,678		

Table 5: Monthly Count of CPS Reports and CWS Referrals Assigned to CP&P Local Offices

County	Local Office	Type of Referral														Total
			Apr 2023	May 2023	Jun 2023	Jul 2023	Aug 2023	Sep 2023	Oct 2023	Nov 2023	Dec 2023	Jan 2024	Feb 2024	Mar 2024	Apr 2024	
ESSEX	Essex Central	CPS	68	85	53	63	70	86	78	64	57	82	71	70	66	913
		CWS	10	30	19	9	24	20	20	12	11	23	22	25	13	238
		Total	78	115	72	72	94	106	98	76	68	105	93	95	79	1,151
	Essex North	CPS	94	122	92	69	74	109	124	117	94	107	95	101	114	1,312
		CWS	16	26	24	11	16	24	21	20	11	12	25	28	15	249
		Total	110	148	116	80	90	133	145	137	105	119	120	129	129	1,561
	Essex South	CPS	84	97	84	94	75	77	101	78	83	91	93	97	91	1,145
		CWS	24	15	23	11	18	22	26	19	25	20	20	16	21	260
		Total	108	112	107	105	93	99	127	97	108	111	113	113	112	1,405
	Newark Center City	CPS	75	95	62	79	81	72	77	85	61	71	73	85	88	1,004
		CWS	9	26	13	11	22	22	13	18	21	13	23	20	19	230
		Total	84	121	75	90	103	94	90	103	82	84	96	105	107	1,234
	Newark Northeast	CPS	91	109	93	85	69	100	103	76	98	101	94	96	78	1,193
		CWS	9	23	20	15	18	15	25	16	34	24	23	35	25	282
		Total	100	132	113	100	87	115	128	92	132	125	117	131	103	1,475
	Newark South	CPS	77	101	74	68	75	73	89	66	76	84	92	95	72	1,042
		CWS	11	10	9	15	27	19	15	13	14	16	22	13	26	210
		Total	88	111	83	83	102	92	104	79	90	100	114	108	98	1,252
County Totals	CPS	489	609	458	458	444	517	572	486	469	536	518	544	509	6,609	
	CWS	79	130	108	72	125	122	120	98	116	108	135	137	119	1,469	
	Total	568	739	566	530	569	639	692	584	585	644	653	681	628	8,078	
GLOUCESTER	Gloucester East	CPS	84	87	93	79	91	84	117	89	83	98	93	81	91	1,170
		CWS	15	16	11	8	13	18	24	20	15	19	24	23	18	224
		Total	99	103	104	87	104	102	141	109	98	117	117	104	109	1,394
	Gloucester West	CPS	116	150	114	127	118	117	131	104	122	104	113	111	111	1,538
		CWS	10	33	21	18	24	25	26	25	26	21	25	23	24	301
		Total	126	183	135	145	142	142	157	129	148	125	138	134	135	1,839
	County Totals	CPS	200	237	207	206	209	201	248	193	205	202	206	192	202	2,708
		CWS	25	49	32	26	37	43	50	45	41	40	49	46	42	525
		Total	225	286	239	232	246	244	298	238	246	242	255	238	244	3,233
	HUDSON	Hudson Central	CPS	105	121	106	71	75	92	98	94	80	79	105	111	79
CWS			20	22	22	21	26	16	15	20	19	15	25	19	15	255
Total			125	143	128	92	101	108	113	114	99	94	130	130	94	1,471
Hudson North		CPS	85	106	77	76	59	87	93	77	78	87	112	95	91	1,123
		CWS	13	15	19	12	15	21	20	19	11	26	13	25	22	231
		Total	98	121	96	88	74	108	113	96	89	113	125	120	113	1,354
Hudson South		CPS	55	71	67	72	71	83	76	85	60	75	90	90	84	979
		CWS	5	13	13	20	15	26	28	12	9	17	15	18	16	207
		Total	60	84	80	92	86	109	104	97	69	92	105	108	100	1,186
Hudson West		CPS	79	91	67	58	70	65	86	71	60	75	97	87	71	977
		CWS	22	12	15	7	14	16	20	17	19	17	14	25	13	211
		Total	101	103	82	65	84	81	106	88	79	92	111	112	84	1,188
County Totals		CPS	324	389	317	277	275	327	353	327	278	316	404	383	325	4,295
		CWS	60	62	69	60	70	79	83	68	58	75	67	87	66	904
	Total	384	451	386	337	345	406	436	395	336	391	471	470	391	5,199	
HUNTERDON	Hunterdon	CPS	32	41	41	48	35	29	44	44	35	37	51	42	44	523
		CWS	5	6	5	12	3	9	9	3	7	7	12	5	6	89
		Total	37	47	46	60	38	38	53	47	42	44	63	47	50	612
	County Totals	CPS	32	41	41	48	35	29	44	44	35	37	51	42	44	523
		CWS	5	6	5	12	3	9	9	3	7	7	12	5	6	89
Total	37	47	46	60	38	38	53	47	42	44	63	47	50	612		
MERCER	Mercer North	CPS	121	140	116	111	105	126	146	113	129	122	116	147	132	1,624
		CWS	27	24	18	17	30	15	27	21	27	26	28	34	24	318
		Total	148	164	134	128	135	141	173	134	156	148	144	181	156	1,942
	Mercer South	CPS	108	101	97	112	101	93	154	96	121	108	133	132	125	1,481
		CWS	21	21	18	12	28	27	41	26	29	18	31	15	25	312
	County Totals	CPS	229	241	213	223	206	219	300	209	250	230	249	279	257	3,105
		CWS	48	45	36	29	58	42	68	47	56	44	59	49	49	630
Total	277	286	249	252	264	261	368	256	306	274	308	328	306	3,735		

Data in this report is preliminary and may differ from any final report. This report is produced to ensure continuous quality improvement throughout DCF.

Table 5: Monthly Count of CPS Reports and CWS Referrals Assigned to CP&P Local Offices

County	Local Office	Type of Referral														Total
			Apr 2023	May 2023	Jun 2023	Jul 2023	Aug 2023	Sep 2023	Oct 2023	Nov 2023	Dec 2023	Jan 2024	Feb 2024	Mar 2024	Apr 2024	
MIDDLESEX	Middlesex Central	CPS	107	134	100	85	90	120	99	107	90	111	120	121	135	1419
		CWS	14	30	24	22	14	26	26	14	13	16	19	21	15	254
		Total	121	164	124	107	104	146	125	121	103	127	139	142	150	1673
	Middlesex Coastal	CPS	117	163	143	121	124	119	129	136	131	148	150	141	139	1761
		CWS	15	27	14	24	35	24	33	26	25	34	21	32	25	335
		Total	132	190	157	145	159	143	162	162	156	182	171	173	164	2096
	Middlesex West	CPS	116	136	116	106	114	124	149	120	152	145	132	162	136	1708
		CWS	20	36	23	18	21	23	30	26	23	35	24	25	39	343
		Total	136	172	139	124	135	147	179	146	175	180	156	187	175	2051
	County Totals	CPS	340	433	359	312	328	363	377	363	373	404	402	424	410	4888
CWS		49	93	61	64	70	73	89	66	61	85	64	78	79	932	
Total		389	526	420	376	398	436	466	429	434	489	466	502	489	5820	
MONMOUTH	Monmouth North	CPS	131	173	123	150	121	149	161	142	137	174	153	171	169	1954
		CWS	24	23	25	29	29	19	33	23	17	26	27	18	28	321
		Total	155	196	148	179	150	168	194	165	154	200	180	189	197	2275
	Monmouth South	CPS	114	134	133	114	104	102	131	115	116	126	102	127	126	1544
		CWS	25	18	27	14	17	9	37	15	21	24	22	15	26	270
		Total	139	152	160	128	121	111	168	130	137	150	124	142	152	1814
	County Totals	CPS	245	307	256	264	225	251	292	257	253	300	255	298	295	3498
		CWS	49	41	52	43	46	28	70	38	38	50	49	33	54	591
		Total	294	348	308	307	271	279	362	295	291	350	304	331	349	4089
	MORRIS	Morris East	CPS	81	90	88	87	65	100	91	101	89	92	95	103	86
CWS			14	10	18	11	8	11	19	13	15	15	14	32	22	202
Total			95	100	106	98	73	111	110	114	104	107	109	135	108	1370
Morris West		CPS	86	103	101	86	78	86	96	108	85	119	103	101	95	1247
		CWS	22	21	12	17	15	22	20	20	13	24	25	26	23	260
		Total	108	124	113	103	93	108	116	128	98	143	128	127	118	1507
County Totals		CPS	167	193	189	173	143	186	187	209	174	211	198	204	181	2415
		CWS	36	31	30	28	23	33	39	33	28	39	39	58	45	462
		Total	203	224	219	201	166	219	226	242	202	250	237	262	226	2877
OCEAN		Ocean North	CPS	177	184	184	159	148	192	184	188	162	160	168	172	194
	CWS		20	40	23	27	29	23	31	24	25	30	25	33	33	363
	Total		197	224	207	186	177	215	215	212	187	190	193	205	227	2635
	Ocean South	CPS	160	195	170	136	148	152	166	173	163	172	156	151	122	2064
		CWS	31	31	23	22	32	35	24	24	28	40	30	25	25	370
		Total	191	226	193	158	180	187	190	197	191	212	186	176	147	2434
	County Totals	CPS	337	379	354	295	296	344	350	361	325	332	324	323	316	4336
		CWS	51	71	46	49	61	58	55	48	53	70	55	58	58	733
		Total	388	450	400	344	357	402	405	409	378	402	379	381	374	5069
	PASSAIC	Passaic Central	CPS	186	223	198	121	105	168	178	155	158	154	140	154	151
CWS			27	41	34	29	35	32	33	34	31	43	30	35	45	449
Total			213	264	232	150	140	200	211	189	189	197	170	189	196	2540
Passaic North		CPS	165	206	154	136	145	176	214	148	159	165	165	165	156	2154
		CWS	27	40	39	27	35	46	37	37	35	39	44	36	38	480
		Total	192	246	193	163	180	222	251	185	194	204	209	201	194	2634
County Totals		CPS	351	429	352	257	250	344	392	303	317	319	305	319	307	4245
		CWS	54	81	73	56	70	78	70	71	66	82	74	71	83	929
		Total	405	510	425	313	320	422	462	374	383	401	379	390	390	5174
SALEM		Salem	CPS	55	67	50	53	50	55	72	54	59	58	68	56	57
	CWS		13	14	8	15	8	8	12	11	7	11	15	19	10	151
	Total		68	81	58	68	58	63	84	65	66	69	83	75	67	905
	County Totals	CPS	55	67	50	53	50	55	72	54	59	58	68	56	57	754
		CWS	13	14	8	15	8	8	12	11	7	11	15	19	10	151
		Total	68	81	58	68	58	63	84	65	66	69	83	75	67	905
SOMERSET	Somerset	CPS	127	145	133	104	97	124	160	112	120	130	127	131	110	1620
		CWS	19	29	19	12	22	23	16	14	20	18	18	25	23	258
		Total	146	174	152	116	119	147	176	126	140	148	145	156	133	1878
	County Totals	CPS	127	145	133	104	97	124	160	112	120	130	127	131	110	1620
		CWS	19	29	19	12	22	23	16	14	20	18	18	25	23	258
		Total	146	174	152	116	119	147	176	126	140	148	145	156	133	1878



Table 5: Monthly Count of CPS Reports and CWS Referrals Assigned to CP&P Local Offices

County	Local Office	Type of Referral														Total
			Apr 2023	May 2023	Jun 2023	Jul 2023	Aug 2023	Sep 2023	Oct 2023	Nov 2023	Dec 2023	Jan 2024	Feb 2024	Mar 2024	Apr 2024	
SUSSEX	Sussex	CPS	71	110	88	93	82	73	88	82	85	80	80	83	99	1114
		CWS	19	19	20	7	15	22	16	11	20	25	21	15	20	230
		Total	90	129	108	100	97	95	104	93	105	105	101	98	119	1344
	County Totals	CPS	71	110	88	93	82	73	88	82	85	80	80	83	99	1114
		CWS	19	19	20	7	15	22	16	11	20	25	21	15	20	230
		Total	90	129	108	100	97	95	104	93	105	105	101	98	119	1344
UNION	Union Central	CPS	92	118	71	71	81	94	97	82	96	73	89	108	91	1163
		CWS	14	19	13	19	13	16	20	11	13	16	20	17	7	198
		Total	106	137	84	90	94	110	117	93	109	89	109	125	98	1361
	Union East	CPS	90	119	102	93	79	85	97	102	84	101	92	104	87	1235
		CWS	10	12	13	9	24	16	17	13	13	15	31	19	19	211
		Total	100	131	115	102	103	101	114	115	97	116	123	123	106	1446
	Union West	CPS	106	115	98	86	84	72	106	120	93	109	100	128	128	1345
		CWS	16	21	25	18	11	19	23	15	15	16	17	18	18	232
		Total	122	136	123	104	95	91	129	135	108	125	117	146	146	1577
	County Totals	CPS	288	352	271	250	244	251	300	304	273	283	281	340	306	3743
		CWS	40	52	51	46	48	51	60	39	41	47	68	54	44	641
		Total	328	404	322	296	292	302	360	343	314	330	349	394	350	4384
WARREN	Warren	CPS	96	92	82	80	76	86	72	76	74	95	86	88	77	1080
		CWS	15	21	7	15	16	8	16	28	13	18	17	20	20	214
		Total	111	113	89	95	92	94	88	104	87	113	103	108	97	1294
	County Totals	CPS	96	92	82	80	76	86	72	76	74	95	86	88	77	1080
		CWS	15	21	7	15	16	8	16	28	13	18	17	20	20	214
		Total	111	113	89	95	92	94	88	104	87	113	103	108	97	1294
County CPS Referral Total		CPS	4,700	5,671	4,745	4,350	4,265	4,717	5,427	4,882	4,615	4,967	4,925	5,034	4,977	63,275
County CWS Referral Total		CWS	837	1,025	924	809	951	969	1,103	912	938	1,074	1,056	1,056	1,029	12,683
County Referral Total		Total	5,537	6,696	5,669	5,159	5,216	5,686	6,530	5,794	5,553	6,041	5,981	6,090	6,006	75,958
Central Region IAIU	CPS	64	89	56	49	49	47	82	60	80	70	70	70	68	854	
	CWS	0	0	0	0	0	0	0	0	0	1	0	0	0	1	
	Total	64	89	56	49	49	47	82	60	80	71	70	70	68	855	
Metro Region IAIU	CPS	32	67	43	32	32	58	86	68	61	59	58	58	71	725	
	CWS	0	0	0	0	0	0	0	0	0	0	0	0	0	0	
	Total	32	67	43	32	32	58	86	68	61	59	58	58	71	725	
Northern Region IAIU	CPS	63	81	33	28	28	59	71	50	50	40	59	59	60	681	
	CWS	0	0	0	1	0	0	0	0	0	1	0	0	0	2	
	Total	63	81	33	29	28	59	71	50	50	41	59	59	60	683	
Southern Region IAIU	CPS	66	84	62	59	59	79	86	71	69	80	89	89	88	981	
	CWS	0	0	0	0	0	0	0	0	0	0	0	0	0	0	
	Total	66	84	62	59	59	79	86	71	69	80	89	89	88	981	
IAIU CPS Subtotal		CPS	225	321	194	168	168	243	325	249	260	249	276	276	287	3,241
IAIU CWS Subtotal		CWS	0	0	0	1	0	0	0	0	2	0	0	0	3	
IAIU Subtotal		Total	225	321	194	169	168	243	325	249	260	251	276	276	287	3,244
County and IAIU CPS Subtotal		CPS	4,925	5,992	4,939	4,518	4,433	4,960	5,752	5,131	4,875	5,216	5,201	5,310	5,264	66,516
County and IAIU CWS Subtotal		CWS	837	1,025	924	810	951	969	1,103	912	938	1,076	1,056	1,056	1,029	12,686
Unable to Determine(1)		Total	102	107	89	81	81	105	109	86	67	81	82	82	105	1,177
Other Offices		Total	7	3	2	1	0	0	4	0	0	3	3	3	0	26
Grand Total		Total	5,871	7,127	5,954	5,410	5,465	6,034	6,968	6,129	5,880	6,376	6,342	6,451	6,398	80,405

⁽¹⁾CPS Reports or CWS Referrals not assigned to an office through the Assignment Designee, but were assigned to an office for an assessment or investigation.