



NEW JERSEY DEPARTMENT OF
CHILDREN AND FAMILIES

Child Protection and Permanency

Monthly Screening and Investigation Report May 2022

Christine Norbut Beyer, MSW
Commissioner



Table of Contents

Table 1: NJ State Central Registry Activity: Monthly Child Abuse and Neglect Hotline Calls, Intakes and Assignments to Child Protection & Permanency (CP&P) Offices

Chart 1: CP&P Annual Trends in Child Protection Services (CPS) Reports and Child Welfare Services (CWS) Referrals

Table 2: Assignments to CP&P Offices: CPS Reports and CWS Referrals

Table 3: Source of CPS Reports and CWS Referrals

Table 4: Monthly Count of CPS Reports and CWS Referrals Assigned to Counties

Table 5: Monthly Count of CPS Reports and CWS Referrals Assigned to CP&P Local Offices

Table 1: NJ State Central Registry Activity: Monthly Child Abuse and Neglect Hotline Calls, Intakes and Assignments to CP&P Offices^{1,2,7}

2021-2022	Hotline Call Activity				Intakes Recorded in NJ SPIRIT ^{6,8}														Assignments to CP&P Offices				
	Total Calls to SCR ³	Abandon Calls ⁴	Average Time to Answer (seconds)	Resulting NJS Intakes ⁵	CPS Reports		CWS Referrals		No Action Required (NAR)		Related Information (RI)		Information & Referral (I&R)		Information Only (IO)		Unusual Incident (UIRS)		CPS Reports		CWS Referrals		Total
					n	%	n	%	n	%	n	%	n	%	n	%	n	%	n	%	n	%	
May 2021	12,496	686	87	13,132	4,870	37.1%	734	5.6%	219	1.7%	3,025	23.0%	2,523	19.2%	1,761	13.4%	0	0.0%	4,870	86.9%	736	13.1%	5,606
June 2021	11,893	895	117	12,269	4,412	36.0%	591	4.8%	188	1.5%	2,943	24.0%	2,430	19.8%	1,705	13.9%	0	0.0%	4,412	88.2%	592	11.8%	5,004
July 2021	10,578	638	127	10,996	3,914	35.6%	569	5.2%	142	1.3%	2,642	24.0%	2,079	18.9%	1,650	15.0%	0	0.0%	3,914	87.3%	570	12.7%	4,484
August 2021	10,365	508	78	10,897	3,866	35.5%	482	4.4%	172	1.6%	2,371	21.8%	2,301	21.1%	1,704	15.6%	1	0.0%	3,866	88.9%	482	11.1%	4,348
September 2021	12,259	591	91	12,780	4,559	35.7%	564	4.4%	148	1.2%	2,794	21.9%	2,894	22.6%	1,819	14.2%	2	0.0%	4,559	89.0%	564	11.0%	5,123
October 2021	14,262	1,183	152	14,500	5,213	36.0%	631	4.4%	200	1.4%	3,287	22.7%	3,277	22.6%	1,890	13.0%	2	0.0%	5,213	89.2%	630	10.8%	5,843
November 2021	13,077	1,619	262	12,689	4,689	37.0%	539	4.2%	165	1.3%	2,817	22.2%	2,865	22.6%	1,609	12.7%	5	0.0%	4,689	89.7%	541	10.3%	5,230
December 2021	12,921	1,426	222	12,594	4,601	36.5%	558	4.4%	157	1.2%	2,746	21.8%	2,858	22.7%	1,660	13.2%	14	0.1%	4,601	89.2%	557	10.8%	5,158
January 2022	11,733	942	163	11,798	4,274	36.2%	524	4.4%	116	1.0%	2,561	21.7%	2,641	22.4%	1,672	14.2%	10	0.1%	4,274	89.1%	523	10.9%	4,797
February 2022	13,523	1,838	304	12,923	4,867	37.7%	632	4.9%	168	1.3%	2,732	21.1%	2,990	23.1%	1,524	11.8%	10	0.1%	4,867	88.5%	635	11.5%	5,502
March 2022	15,347	1,916	281	14,886	5,781	38.8%	727	4.9%	207	1.4%	2,946	19.8%	3,468	23.3%	1,750	11.8%	7	0.0%	5,780	88.8%	727	11.2%	6,507
April 2022	13,145	2,124	398	12,290	4,669	38.0%	637	5.2%	168	1.4%	2,486	20.2%	2,786	22.7%	1,537	12.5%	7	0.1%	4,669	88.0%	636	12.0%	5,305
May 2022	13,609	1,526	201	13,433	5,228	38.9%	644	4.8%	177	1.3%	2,804	20.9%	2,967	22.1%	1,604	11.9%	9	0.1%	5,228	89.0%	647	11.0%	5,875
	12,708	1,222	191	12,707	4,688	36.9%	602	4.7%	171	1.3%	2,781	21.9%	2,775	21.8%	1,683	13.2%	5	0.0%	4,688	88.6%	603	11.4%	5,291
Overall Total	165,208	15,892		165,187	60,943		7,832		2,227		36,154		36,079		21,885		67		60,942	88.6%	7,840	11.4%	68,782

¹Comes from three distinct sources: (1) the Automatic Call Distribution (ACD) phone system; which keeps a count of the number of calls and call routing; (2) Monthly NJSpirit Intakes; which record decision making on calls received by hotline screeners, and (3) NJSpirit

²The number of Intakes, CPS Reports, and CWS Referrals are based on an extract from NJSpirit.

Data extracted by the Office of Research, Evaluation, and Reporting on **June 08, 2022** includes all Intakes, CPS Reports, and CWS Referrals received from **May 01, 2022** through **May 31, 2022**.

³The number calls received through the ACD System that were directed to a screener from any call-in phone number.

⁴The number of calls received through the ACD System that are abandoned either while waiting in queue or while ringing.

⁵The number of Intakes entered in NJSpirit from the number of calls received.

⁶The number of Intakes recorded in NJSpirit, by type of Intake. There is not a one-to-one relationship between an ACD call and an Intake; multiple calls to State Central Registry (SCR) may result in a single Intake, or one call may result in multiple Intakes.

⁷Intake: The process of documenting: a report of alleged abuse or neglect of a child (CPS); a request for services on behalf of a child, or a referral of a child for services (CWS); a call in which the caller provides additional or clarifying information about a current service

CP&P Annual Trends in CPS Reports and CWS Referrals

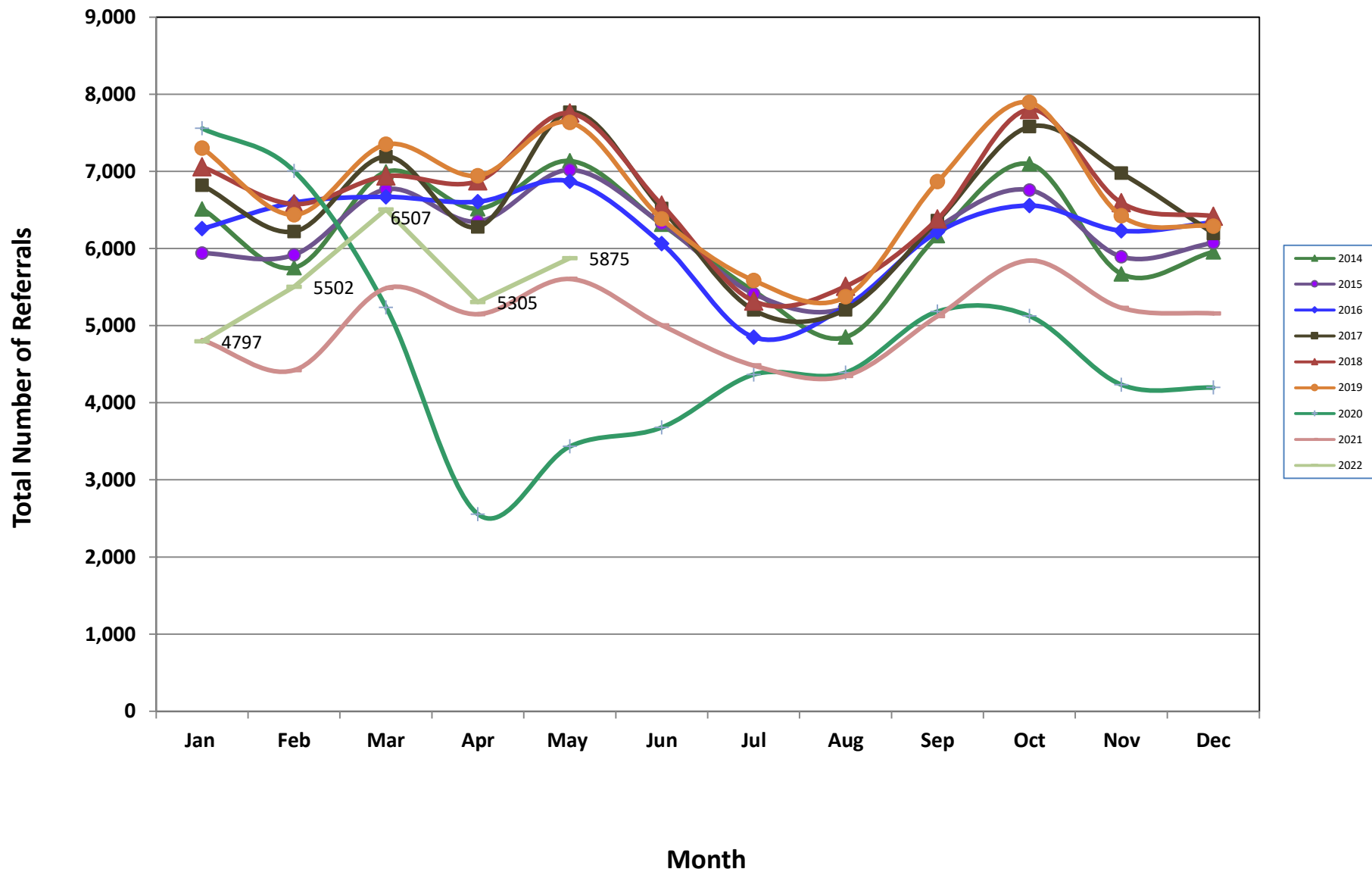


Table 2: Assignments to CP&P Offices: CPS Reports and CWS Referrals¹

Intake Date ³		CPS Reports ²	CWS Referrals ²	Total Assignments ²
2017	Jan 2017	5,111	1,708	6,819
	Feb 2017	4,716	1,504	6,220
	Mar 2017	5,349	1,843	7,192
	Apr 2017	4,790	1,490	6,280
	May 2017	5,847	1,919	7,766
	Jun 2017	4,853	1,665	6,518
	Jul 2017	3,814	1,389	5,203
	Aug 2017	3,866	1,340	5,206
	Sep 2017	4,719	1,643	6,362
	Oct 2017	5,613	1,966	7,579
	Nov 2017	5,223	1,753	6,976
	Dec 2017	4,601	1,594	6,195
	Total	58,502	19,814	78,316
2018	Jan 2018	5,276	1,784	7,060
	Feb 2018	4,933	1,644	6,577
	Mar 2018	5,212	1,727	6,939
	Apr 2018	5,275	1,601	6,876
	May 2018	5,920	1,836	7,756
	Jun 2018	4,948	1,615	6,563
	Jul 2018	4,011	1,308	5,319
	Aug 2018	4,102	1,408	5,510
	Sep 2018	4,748	1,634	6,382
	Oct 2018	5,790	2,011	7,801
	Nov 2018	4,973	1,620	6,593
	Dec 2018	4,891	1,527	6,418
	Total	60,079	19,715	79,794
2019	Jan 2019	5,443	1,858	7,301
	Feb 2019	4,811	1,628	6,439
	Mar 2019	5,677	1,824	7,501
	Apr 2019	5,313	1,630	6,943
	May 2019	5,853	1,781	7,634
	Jun 2019	4,874	1,509	6,383
	Jul 2019	4,277	1,309	5,586
	Aug 2019	4,068	1,306	5,374
	Sep 2019	5,315	1,551	6,866
	Oct 2019	5,968	1,926	7,894
	Nov 2019	4,991	1,432	6,423
	Dec 2019	4,855	1,434	6,289
	Total	61,445	19,188	80,633

Table 2: Assignments to CP&P Offices: CPS Reports and CWS Referrals¹

Intake Date ³		CPS Reports ²	CWS Referrals ²	Total Assignments ²
2020	Jan 2020	5,715	1,842	7,557
	Feb 2020	5,380	1,624	7,004
	Mar 2020	4,172	1,065	5,237
	Apr 2020	2,149	407	2,556
	May 2020	2,897	537	3,434
	Jun 2020	3,045	636	3,681
	Jul 2020	3,628	738	4,366
	Aug 2020	3,569	822	4,391
	Sep 2020	4,153	1,030	5,183
	Oct 2020	4,257	868	5,125
	Nov 2020	3,564	670	4,234
	Dec 2020	3,517	681	4,198
	Total	46,046	10,920	56,966
2021	Jan 2021	4,018	794	4,812
	Feb 2021	3,767	655	4,422
	Mar 2021	4,657	830	5,487
	Apr 2021	4,398	750	5,148
	May 2021	4,870	736	5,606
	Jun 2021	4,412	592	5,004
	Jul 2021	3,914	570	4,484
	Aug 2021	3,866	482	4,348
	Sep 2021	4,559	564	5,123
	Oct 2021	5,213	630	5,843
	Nov 2021	4,689	541	5,230
	Dec 2021	4,601	557	5,158
	Total	52,964	7,701	60,665
2022	Jan 2022	4,274	523	4,797
	Feb 2022	4,867	635	5,502
	Mar 2022	5,780	727	6,507
	Apr 2022	4,669	636	5,305
	May 2022	5,228	647	5,875
	Total	20,544	2,645	23,189
Grand Total		299,580	79,983	379,563

¹Source of Data: NJ SPIRIT

²A CPS Report or a CWS Referral may include multiple children in a family, with one or more allegation or request for services. In these cases, each CPS Report or CWS Referral is counted once - the CPS Report or the CWS Referral is the unit of analysis rather than the child.

³Prior to January 2014, the number of CPS Reports and CWS Referrals was based on the type of assignment of the CPS Report or CWS Referral. Beginning in January 2014, the number of CPS Reports and CWS Referrals is based on the number of CPS Reports and CWS Referrals received.

Table 3: Source of CPS Reports and CWS Referrals

	Source	May 2021	Jun 2021	Jul 2021	Aug 2021	Sep 2021	Oct 2021	Nov 2021	Dec 2021	Jan 2022	Feb 2022	Mar 2022	Apr 2022	May 2022		13 Month Total	
CPS Reports and CWS Referrals	School Staff	913	531	145	83	863	1,450	1,303	1,252	983	1,549	1,998	1,227	1,456	25%	13,753	20%
	Healthcare Provider	917	819	839	789	824	780	746	706	746	750	895	728	763	13%	10,302	15%
	Law Enforcement	1,542	1,466	1,442	1,384	1,397	1,446	1,340	1,341	1,238	1,234	1,478	1,373	1,513	26%	18,194	26%
	Government Agency	272	221	248	265	266	222	205	209	212	253	261	261	233	4%	3,128	5%
	Parent	387	396	392	404	347	393	377	378	347	349	380	333	383	7%	4,866	7%
	Relative/Friend/Neighbor	355	382	362	363	372	350	289	342	337	275	298	301	344	6%	4,370	6%
	Anonymous	487	476	387	401	444	506	364	367	366	461	471	410	527	9%	5,667	8%
	CP&P	89	76	58	45	60	73	45	49	54	56	75	62	42	1%	784	1%
	Court/Legal	111	119	125	88	120	126	89	89	100	108	144	140	116	2%	1,475	2%
	Community Group/Individual	175	176	149	159	137	175	169	144	158	183	198	176	201	3%	2,200	3%
	Facility Staff (incl Correctional Facility)	67	66	65	69	51	55	47	53	54	56	55	59	62	1%	759	1%
	Child (Self)	33	22	26	49	41	42	28	30	29	29	25	25	18	0%	397	1%
	Other	245	245	226	236	189	214	217	182	160	183	209	188	194	3%	2,688	4%
	Daycare/Babysitter	13	9	20	13	12	11	11	16	13	16	20	22	23	0%	199	0%
Total	5,606	5,004	4,484	4,348	5,123	5,843	5,230	5,158	4,797	5,502	6,507	5,305	5,875		68,782		

Table 4: Monthly Count of CPS Reports and CWS Referrals Assigned to Counties

County														Average Number of Assignments Last 13 Months	Apr 22 to May 22 Numerical Difference
	May 2021	Jun 2021	Jul 2021	Aug 2021	Sep 2021	Oct 2021	Nov 2021	Dec 2021	Jan 2022	Feb 2022	Mar 2022	Apr 2022	May 2022		
Atlantic	265	241	197	182	215	255	234	215	189	245	268	222	250	229	28
Bergen	343	273	255	249	325	350	345	360	290	354	425	348	327	326	-21
Burlington	307	286	238	223	263	280	264	270	264	283	359	255	300	276	45
Camden	456	403	381	371	466	511	407	419	404	449	542	458	474	442	16
Cape May	81	56	81	72	70	70	66	70	62	59	74	62	68	69	6
Cumberland	173	165	153	140	180	196	167	190	149	160	202	166	206	173	40
Essex	520	501	457	442	484	565	535	489	456	550	647	532	581	520	49
Gloucester	219	228	205	207	208	221	215	204	216	195	257	217	218	216	1
Hudson	341	319	255	287	303	371	349	321	341	392	415	324	409	341	85
Hunterdon	47	34	37	33	39	52	44	44	40	33	55	46	38	42	-8
Mercer	264	230	200	185	222	245	218	230	189	229	263	217	258	227	41
Middlesex	428	349	299	317	385	472	355	408	356	464	520	388	432	398	44
Monmouth	296	262	249	256	250	331	294	294	260	288	342	297	332	289	35
Morris	162	190	141	137	173	185	189	176	193	193	213	180	216	181	36
Ocean	396	360	290	310	337	382	341	333	304	305	370	332	372	341	40
Passaic	346	291	285	245	313	402	350	330	274	354	415	347	385	334	38
Salem	76	64	61	48	75	78	56	57	65	74	84	55	81	67	26
Somerset	153	130	108	97	131	148	130	111	112	141	165	107	142	129	35
Sussex	78	70	62	67	90	99	85	72	84	100	107	95	95	85	0
Union	321	266	240	226	256	293	277	277	257	290	363	317	332	286	15
Warren	104	86	87	55	99	68	93	67	86	83	121	79	86	86	7
County Subtotals	5,376	4,804	4,281	4,149	4,884	5,574	5,014	4,937	4,591	5,241	6,207	5,044	5,602	5,054	558
Central Region IAIU	41	22	35	25	42	53	31	37	32	43	54	35	60	39	25
Metro Region IAIU	18	17	11	22	36	29	26	21	27	36	35	35	41	27	6
Northern Region IAIU	28	18	23	19	27	39	44	42	28	40	50	38	52	34	14
Southern Region IAIU	48	33	42	42	51	41	33	42	35	46	59	46	48	44	2
IAIU Subtotals	135	90	111	108	156	162	134	142	122	165	198	154	201	144	47
¹ Unable to Determine	94	108	89	91	83	107	82	78	84	92	102	107	72	91	-35
Other Offices	1	2	3	0	0	0	0	1	0	4	0	0	0	1	0
Grand Total	5,606	5,004	4,484	4,348	5,123	5,843	5,230	5,158	4,797	5,502	6,507	5,305	5,875	5,291	570

¹CPS Reports or CWS Referrals not assigned to an office through the Assignment Designee, but were assigned to an office for an assessment or investigation.



Table 5: Monthly Count of CPS Reports and CWS Referrals Assigned to CP&P Local Offices

County	Local Office	Type of Referral	May 2021	Jun 2021	Jul 2021	Aug 2021	Sep 2021	Oct 2021	Nov 2021	Dec 2021	Jan 2022	Feb 2022	Mar 2022	Apr 2022	May 2022	Total
ATLANTIC	Atlantic East	CPS	128	130	95	97	106	126	118	104	114	124	128	106	116	1,492
		CWS	22	14	12	17	10	13	12	14	9	13	21	26	15	198
		Total	150	144	107	114	116	139	130	118	123	137	149	132	131	1,690
	Atlantic West	CPS	94	83	83	60	82	104	90	85	58	90	103	81	107	1,120
		CWS	21	14	7	8	17	12	14	12	8	18	16	9	12	168
		Total	115	97	90	68	99	116	104	97	66	108	119	90	119	1,288
	County Totals	CPS	222	213	178	157	188	230	208	189	172	214	231	187	223	2,612
		CWS	43	28	19	25	27	25	26	26	17	31	37	35	27	366
		Total	265	241	197	182	215	255	234	215	189	245	268	222	250	2,978
BERGEN	Bergen Central	CPS	122	89	85	85	132	139	133	127	111	152	169	119	119	1,582
		CWS	12	15	10	6	13	19	18	11	13	17	17	18	13	182
		Total	134	104	95	91	145	158	151	138	124	169	186	137	132	1,764
	Bergen South	CPS	191	157	139	147	157	177	174	197	148	170	217	188	179	2,241
		CWS	18	12	21	11	23	15	20	25	18	15	22	23	16	239
		Total	209	169	160	158	180	192	194	222	166	185	239	211	195	2,480
	County Totals	CPS	313	246	224	232	289	316	307	324	259	322	386	307	298	3,823
		CWS	30	27	31	17	36	34	38	36	31	32	39	41	29	421
		Total	343	273	255	249	325	350	345	360	290	354	425	348	327	4,244
BURLINGTON	Burlington East	CPS	128	129	91	91	103	137	115	111	119	121	162	103	134	1,544
		CWS	21	21	20	10	17	11	18	16	16	11	17	17	15	210
		Total	149	150	111	101	120	148	133	127	135	132	179	120	149	1,754
	Burlington West	CPS	135	117	105	100	125	115	115	128	119	127	156	118	129	1,589
		CWS	23	19	22	22	18	17	16	15	10	24	24	17	22	249
		Total	158	136	127	122	143	132	131	143	129	151	180	135	151	1,838
	County Totals	CPS	263	246	196	191	228	252	230	239	238	248	318	221	263	3,133
		CWS	44	40	42	32	35	28	34	31	26	35	41	34	37	459
		Total	307	286	238	223	263	280	264	270	264	283	359	255	300	3,592
CAMDEN	Camden Central	CPS	105	88	86	88	105	117	93	91	104	111	95	112	1,286	
		CWS	17	13	12	16	15	17	15	14	16	16	7	9	17	184
		Total	122	101	98	104	120	134	108	105	107	120	118	104	129	1,470
	Camden East	CPS	104	84	81	84	101	128	94	81	84	95	106	107	94	1,243
		CWS	10	13	13	16	10	16	14	20	22	11	20	15	16	196
		Total	114	97	94	100	111	144	108	101	106	106	126	122	110	1,439
	Camden North	CPS	97	92	79	67	97	102	91	87	89	103	135	98	85	1,222
		CWS	17	11	9	13	17	15	5	14	9	16	22	22	21	191
		Total	114	103	88	80	114	117	96	101	98	119	157	120	106	1,413
	Camden South	CPS	91	92	88	75	108	96	85	94	83	95	117	101	122	1,247
		CWS	15	10	13	12	13	20	10	18	10	9	24	11	7	172
		Total	106	102	101	87	121	116	95	112	93	104	141	112	129	1,419
	County Totals	CPS	397	356	334	314	411	443	363	353	347	397	469	401	413	4,998
		CWS	59	47	47	57	55	68	44	66	57	52	73	57	61	743
		Total	456	403	381	371	466	511	407	419	404	449	542	458	474	5,741
CAPE MAY	Cape May	CPS	70	51	63	64	61	61	56	61	56	52	63	56	58	772
		CWS	11	5	18	8	9	9	10	9	6	7	11	6	10	119
		Total	81	56	81	72	70	70	66	70	62	59	74	62	68	891
	County Totals	CPS	70	51	63	64	61	61	56	61	56	52	63	56	58	772
		CWS	11	5	18	8	9	9	10	9	6	7	11	6	10	119
Total	81	56	81	72	70	70	66	70	62	59	74	62	68	891		
CUMBERLAND	Cumberland East	CPS	54	66	68	58	77	75	59	71	56	54	74	59	65	836
		CWS	11	11	4	4	8	11	6	8	11	14	10	4	12	114
		Total	65	77	72	62	85	86	65	79	67	68	84	63	77	950
	Cumberland West	CPS	91	74	73	71	89	102	94	96	67	81	109	90	115	1,152
		CWS	17	14	8	7	6	8	8	15	15	11	9	13	14	145
		Total	108	88	81	78	95	110	102	111	82	92	118	103	129	1,297
	County Totals	CPS	145	140	141	129	166	177	153	167	123	135	183	149	180	1,988
CWS		28	25	12	11	14	19	14	23	26	25	19	17	26	259	
Total		173	165	153	140	180	196	167	190	149	160	202	166	206	2,247	

Data in this report is preliminary and may differ from any final report. This report is produced to ensure continuous quality improvement throughout DCF.



Table 5: Monthly Count of CPS Reports and CWS Referrals Assigned to CP&P Local Offices

County	Local Office	Type of Referral	May 2021	Jun 2021	Jul 2021	Aug 2021	Sep 2021	Oct 2021	Nov 2021	Dec 2021	Jan 2022	Feb 2022	Mar 2022	Apr 2022	May 2022	Total
ESSEX	Essex Central	CPS	62	63	77	59	75	88	78	68	57	69	78	89	83	946
		CWS	9	9	15	12	6	14	7	12	6	13	10	14	10	137
		Total	71	72	92	71	81	102	85	80	63	82	88	103	93	1,083
	Essex North	CPS	79	71	68	49	50	78	85	109	81	88	115	82	91	1,046
		CWS	15	7	7	1	3	9	12	8	13	10	6	7	11	109
		Total	94	78	75	50	53	87	97	117	94	98	121	89	102	1,155
	Essex South	CPS	81	86	61	74	76	104	84	62	65	89	123	82	106	1093
		CWS	12	13	9	9	13	14	11	15	8	11	15	10	17	157
		Total	93	99	70	83	89	118	95	77	73	100	138	92	123	1250
	Newark Center City	CPS	74	67	67	64	75	86	64	75	79	71	90	75	88	975
		CWS	5	14	3	11	12	6	11	13	2	8	9	9	9	112
		Total	79	81	70	75	87	92	75	88	81	79	99	84	97	1087
	Newark Northeast	CPS	83	70	61	61	71	75	80	50	68	91	94	83	72	959
		CWS	10	11	18	7	9	14	6	5	8	13	14	5	6	126
		Total	93	81	79	68	80	89	86	55	76	104	108	88	78	1085
	Newark South	CPS	83	86	58	81	83	72	85	65	55	79	88	65	76	976
		CWS	7	4	13	14	11	5	12	7	14	8	5	11	12	123
		Total	90	90	71	95	94	77	97	72	69	87	93	76	88	1099
	County Totals	CPS	462	443	392	388	430	503	476	429	405	487	588	476	516	5995
		CWS	58	58	65	54	54	62	59	60	51	63	59	56	65	764
		Total	520	501	457	442	484	565	535	489	456	550	647	532	581	6759
GLOUCESTER	Gloucester East	CPS	94	85	85	76	80	97	88	90	86	84	107	79	88	1139
		CWS	16	13	15	8	19	13	13	7	14	12	16	18	9	173
		Total	110	98	100	84	99	110	101	97	100	96	123	97	97	1312
	Gloucester West	CPS	96	109	90	113	97	93	95	92	103	91	123	103	109	1314
		CWS	13	21	15	10	12	18	19	15	13	8	11	17	12	184
		Total	109	130	105	123	109	111	114	107	116	99	134	120	121	1498
	County Totals	CPS	190	194	175	189	177	190	183	182	189	175	230	182	197	2453
CWS		29	34	30	18	31	31	32	22	27	20	27	35	21	357	
Total		219	228	205	207	208	221	215	204	216	195	257	217	218	2810	
HUDSON	Hudson Central	CPS	96	78	63	104	78	111	80	70	78	93	99	74	131	1155
		CWS	16	20	11	8	15	13	18	15	9	18	17	11	10	181
		Total	112	98	74	112	93	124	98	85	87	111	116	85	141	1336
	Hudson North	CPS	72	57	60	60	59	68	80	81	90	98	108	65	74	972
		CWS	14	7	11	12	11	9	6	8	5	12	10	10	10	125
		Total	86	64	71	72	70	77	86	89	95	110	118	75	84	1097
	Hudson South	CPS	50	74	37	41	51	54	68	59	62	69	74	63	80	782
		CWS	12	8	7	3	9	12	4	5	12	8	4	10	14	108
		Total	62	82	44	44	60	66	72	64	74	77	78	73	94	890
	Hudson West	CPS	68	65	61	52	72	93	87	77	76	87	90	84	84	996
		CWS	13	10	5	7	8	11	6	6	9	7	13	7	6	108
		Total	81	75	66	59	80	104	93	83	85	94	103	91	90	1104
	County Totals	CPS	286	274	221	257	260	326	315	287	306	347	371	286	369	3905
CWS		55	45	34	30	43	45	34	34	35	45	44	38	40	522	
Total		341	319	255	287	303	371	349	321	341	392	415	324	409	4427	
HUNTERDON	Hunterdon	CPS	38	29	35	32	35	49	42	42	36	30	50	39	34	491
		CWS	9	5	2	1	4	3	2	2	4	3	5	7	4	51
		Total	47	34	37	33	39	52	44	44	40	33	55	46	38	542
	County Totals	CPS	38	29	35	32	35	49	42	42	36	30	50	39	34	491
		CWS	9	5	2	1	4	3	2	2	4	3	5	7	4	51
Total	47	34	37	33	39	52	44	44	40	33	55	46	38	542		
MERCER	Mercer North	CPS	128	113	92	90	103	85	97	95	87	99	129	91	131	1340
		CWS	11	17	20	12	13	18	12	12	13	16	14	18	12	188
		Total	139	130	112	102	116	103	109	107	100	115	143	109	143	1528
	Mercer South	CPS	109	88	74	76	91	128	101	108	76	107	106	100	96	1260
		CWS	16	12	14	7	15	14	8	15	13	7	14	8	19	162
		Total	125	100	88	83	106	142	109	123	89	114	120	108	115	1422
	County Totals	CPS	237	201	166	166	194	213	198	203	163	206	235	191	227	2600
CWS		27	29	34	19	28	32	20	27	26	23	28	26	31	350	
Total		264	230	200	185	222	245	218	230	189	229	263	217	258	2950	

Data in this report is preliminary and may differ from any final report. This report is produced to ensure continuous quality improvement throughout DCF.

Table 5: Monthly Count of CPS Reports and CWS Referrals Assigned to CP&P Local Offices

County	Local Office	Type of Referral	May 2021	Jun 2021	Jul 2021	Aug 2021	Sep 2021	Oct 2021	Nov 2021	Dec 2021	Jan 2022	Feb 2022	Mar 2022	Apr 2022	May 2022	Total
MIDDLESEX	Middlesex Central	CPS	99	103	81	71	91	118	101	114	114	125	129	126	107	1379
		CWS	11	15	10	7	12	17	9	10	5	19	18	12	14	159
		Total	110	118	91	78	103	135	110	124	119	144	147	138	121	1538
	Middlesex Coastal	CPS	131	102	93	109	132	149	120	120	113	138	173	124	137	1641
		CWS	20	11	9	14	9	12	9	12	6	10	8	12	13	145
		Total	151	113	102	123	141	161	129	132	119	148	181	136	150	1786
	Middlesex West	CPS	142	104	95	106	127	162	106	146	109	153	171	100	147	1668
		CWS	25	14	11	10	14	14	10	6	9	19	21	14	14	181
		Total	167	118	106	116	141	176	116	152	118	172	192	114	161	1849
	County Totals	CPS	372	309	269	286	350	429	327	380	336	416	473	350	391	4688
		CWS	56	40	30	31	35	43	28	28	20	48	47	38	41	485
		Total	428	349	299	317	385	472	355	408	356	464	520	388	432	5173
MONMOUTH	Monmouth North	CPS	146	124	121	125	123	186	132	158	132	145	186	157	172	1907
		CWS	20	11	10	16	11	14	17	17	11	12	14	16	22	191
		Total	166	135	131	141	134	200	149	175	143	157	200	173	194	2098
	Monmouth South	CPS	120	116	107	109	109	120	134	108	100	114	130	110	126	1503
		CWS	10	11	11	6	7	11	11	11	17	17	12	14	12	150
		Total	130	127	118	115	116	131	145	119	117	131	142	124	138	1653
	County Totals	CPS	266	240	228	234	232	306	266	266	232	259	316	267	298	3410
		CWS	30	22	21	22	18	25	28	28	28	29	26	30	34	341
		Total	296	262	249	256	250	331	294	294	260	288	342	297	332	3751
MORRIS	Morris East	CPS	75	89	53	70	67	74	82	73	75	101	89	72	85	1005
		CWS	11	7	7	4	8	6	7	12	11	5	8	11	7	104
		Total	86	96	60	74	75	80	89	85	86	106	97	83	92	1109
	Morris West	CPS	70	86	76	57	89	95	90	84	99	78	101	82	112	1119
		CWS	6	8	5	6	9	10	10	7	8	9	15	15	12	120
		Total	76	94	81	63	98	105	100	91	107	87	116	97	124	1239
	County Totals	CPS	145	175	129	127	156	169	172	157	174	179	190	154	197	2124
		CWS	17	15	12	10	17	16	17	19	19	14	23	26	19	224
		Total	162	190	141	137	173	185	189	176	193	193	213	180	216	2348
OCEAN	Ocean North	CPS	182	173	142	148	162	178	172	159	154	151	158	171	172	2122
		CWS	19	20	18	17	11	15	13	14	18	22	24	16	23	230
		Total	201	193	160	165	173	193	185	173	172	173	182	187	195	2352
	Ocean South	CPS	176	148	110	136	149	170	144	145	123	116	168	128	153	1866
		CWS	19	19	20	9	15	19	12	15	9	16	20	17	24	214
		Total	195	167	130	145	164	189	156	160	132	132	188	145	177	2080
	County Totals	CPS	358	321	252	284	311	348	316	304	277	267	326	299	325	3988
		CWS	38	39	38	26	26	34	25	29	27	38	44	33	47	444
		Total	396	360	290	310	337	382	341	333	304	305	370	332	372	4432
PASSAIC	Passaic Central	CPS	158	115	132	90	143	169	160	155	144	165	187	140	177	1935
		CWS	26	12	9	11	20	22	18	14	15	29	24	25	18	243
		Total	184	127	141	101	163	191	178	169	159	194	211	165	195	2178
	Passaic North	CPS	142	153	126	130	135	193	157	152	104	136	182	154	166	1930
		CWS	20	11	18	14	15	18	15	9	11	24	22	28	24	229
		Total	162	164	144	144	150	211	172	161	115	160	204	182	190	2159
	County Totals	CPS	300	268	258	220	278	362	317	307	248	301	369	294	343	3865
		CWS	46	23	27	25	35	40	33	23	26	53	46	53	42	472
		Total	346	291	285	245	313	402	350	330	274	354	415	347	385	4337
SALEM	Salem	CPS	63	59	51	41	66	71	50	49	58	59	70	48	72	757
		CWS	13	5	10	7	9	7	6	8	7	15	14	7	9	117
		Total	76	64	61	48	75	78	56	57	65	74	84	55	81	874
	County Totals	CPS	63	59	51	41	66	71	50	49	58	59	70	48	72	757
		CWS	13	5	10	7	9	7	6	8	7	15	14	7	9	117
Total	76	64	61	48	75	78	56	57	65	74	84	55	81	874		
SOMERSET	Somerset	CPS	125	114	96	85	128	133	125	101	103	132	149	103	132	1526
		CWS	28	16	12	12	3	15	5	10	9	9	16	4	10	149
		Total	153	130	108	97	131	148	130	111	112	141	165	107	142	1675
	County Totals	CPS	125	114	96	85	128	133	125	101	103	132	149	103	132	1526
		CWS	28	16	12	12	3	15	5	10	9	9	16	4	10	149
Total	153	130	108	97	131	148	130	111	112	141	165	107	142	1675		



Table 5: Monthly Count of CPS Reports and CWS Referrals Assigned to CP&P Local Offices

County	Local Office	Type of Referral														Total
			May 2021	Jun 2021	Jul 2021	Aug 2021	Sep 2021	Oct 2021	Nov 2021	Dec 2021	Jan 2022	Feb 2022	Mar 2022	Apr 2022	May 2022	
SUSSEX	Sussex	CPS	70	64	52	62	82	86	71	67	77	89	98	84	85	987
		CWS	8	6	10	5	8	13	14	5	7	11	9	11	10	117
		Total	78	70	62	67	90	99	85	72	84	100	107	95	95	1104
	County Totals	CPS	70	64	52	62	82	86	71	67	77	89	98	84	85	987
		CWS	8	6	10	5	8	13	14	5	7	11	9	11	10	117
		Total	78	70	62	67	90	99	85	72	84	100	107	95	95	1104
UNION	Union Central	CPS	88	70	74	65	72	87	64	82	56	78	95	90	88	1009
		CWS	17	5	10	9	8	3	11	5	10	8	16	4	15	121
		Total	105	75	84	74	80	90	75	87	66	86	111	94	103	1130
	Union East	CPS	88	95	72	68	66	93	88	87	108	75	104	98	96	1138
		CWS	18	9	2	8	11	9	9	15	8	9	14	10	13	135
		Total	106	104	74	76	77	102	97	102	116	84	118	108	109	1273
	Union West	CPS	101	79	70	70	89	93	95	79	67	108	115	98	105	1169
		CWS	9	8	12	6	10	8	10	9	8	12	19	17	15	143
		Total	110	87	82	76	99	101	105	88	75	120	134	115	120	1312
	County Totals	CPS	277	244	216	203	227	273	247	248	231	261	314	286	289	3316
		CWS	44	22	24	23	29	20	30	29	26	29	49	31	43	399
		Total	321	266	240	226	256	293	277	277	257	290	363	317	332	3715
WARREN	Warren	CPS	87	77	78	51	91	64	86	62	77	77	103	71	77	1001
		CWS	17	9	9	4	8	4	7	5	9	6	18	8	9	113
		Total	104	86	87	55	99	68	93	67	86	83	121	79	86	1114
	County Totals	CPS	87	77	78	51	91	64	86	62	77	77	103	71	77	1001
		CWS	17	9	9	4	8	4	7	5	9	6	18	8	9	113
		Total	104	86	87	55	99	68	93	67	86	83	121	79	86	1114
County CPS Referral Total		CPS	4,686	4,264	3,754	3,712	4,360	5,001	4,508	4,417	4,107	4,653	5,532	4,451	4,987	58,432
County CWS Referral Total		CWS	690	540	527	437	524	573	506	520	484	588	675	593	615	7,272
County Referral Total		Total	5,376	4,804	4,281	4,149	4,884	5,574	5,014	4,937	4,591	5,241	6,207	5,044	5,602	65,704
Central Region IAIU	CPS	41	22	35	25	42	53	31	37	32	43	54	35	60	510	
	CWS	0	0	0	0	0	0	0	0	0	0	0	0	0	0	
	Total	41	22	35	25	42	53	31	37	32	43	54	35	60	510	
Metro Region IAIU	CPS	18	17	11	22	36	28	26	21	27	36	35	35	41	353	
	CWS	0	0	0	0	0	1	0	0	0	0	0	0	0	1	
	Total	18	17	11	22	36	29	26	21	27	36	35	35	41	354	
Northern Region IAIU	CPS	28	18	23	19	27	39	44	41	28	40	50	38	52	447	
	CWS	0	0	0	0	0	0	0	1	0	0	0	0	0	1	
	Total	28	18	23	19	27	39	44	42	28	40	50	38	52	448	
Southern Region IAIU	CPS	48	33	42	42	51	41	33	42	35	46	59	46	48	566	
	CWS	0	0	0	0	0	0	0	0	0	0	0	0	0	0	
	Total	48	33	42	42	51	41	33	42	35	46	59	46	48	566	
IAIU CPS Subtotal		CPS	135	90	111	108	156	161	134	141	122	165	198	154	201	1,876
IAIU CWS Subtotal		CWS	0	0	0	0	0	1	0	1	0	0	0	0	2	
IAIU Subtotal		Total	135	90	111	108	156	162	134	142	122	165	198	154	201	1,878
County and IAIU CPS Subtotal		CPS	4,821	4,354	3,865	3,820	4,516	5,162	4,642	4,558	4,229	4,818	5,730	4,605	5,188	60,308
County and IAIU CWS Subtotal		CWS	690	540	527	437	524	574	506	521	484	588	675	593	615	7,274
Unable to Determine(1)		Total	94	108	89	91	83	107	82	78	84	92	102	107	72	1,189
Other Offices		Total	1	2	3	0	0	0	0	1	0	4	0	0	0	11
Grand Total		Total	5,606	5,004	4,484	4,348	5,123	5,843	5,230	5,158	4,797	5,502	6,507	5,305	5,875	68,782

⁽¹⁾CPS Reports or CWS Referrals not assigned to an office through the Assignment Designee, but were assigned to an office for an assessment or investigation.