



Child Protection and Permanency

Monthly Screening and Investigation Report June 2017

Allison Blake, Ph.D., L.S.W.
Commissioner

July 17, 2017



Table of Contents

Table 1: NJ State Central Registry Activity: Monthly Child Abuse and Neglect Hotline Calls, Intakes and Assignments to Child Protection & Permanency (CP&P) Offices

Chart 1: CP&P Annual Trends in Child Protection Services (CPS) Reports and Child Welfare Services (CWS) Referrals

Table 2: Assignments to CP&P Offices: CPS Reports and CWS Referrals

Table 3: Source of CPS Reports and CWS Referrals

Table 4: Monthly Count of CPS Reports and CWS Referrals Assigned to Counties

Table 5: Monthly Count of CPS Reports and CWS Referrals Assigned to CP&P Local Offices

Table 1: NJ State Central Registry Activity: Monthly Child Abuse and Neglect Hotline Calls, Intakes and Assignments to CP&P Offices^{1,2,7}

2016 - 2017	Hotline Call Activity				Intakes Recorded in NJ SPIRIT ^{6,8}												Assignments to CP&P Offices				
	Total Calls to SCR ³	Abandon Calls ⁴	Average Time to Answer (seconds)	Resulting NJS Intakes ⁵	CPS Reports		CWS Referrals		No Action Required (NAR)		Related Information (RI)		Information & Referral (I&R)		Information Only (IO)		CPS Reports		CWS Referrals		Total
					n	%	n	%	n	%	n	%	n	%	n	%	n	%	n	%	
June 2016	13,304	396	26	14,592	4,602	31.5%	1,460	10.0%	336	2.3%	3,687	25.3%	1,808	12.4%	2,699	18.5%	4,602	75.9%	1,461	24.1%	6,063
July 2016	11,304	338	25	12,531	3,663	29.2%	1,186	9.5%	295	2.4%	3,477	27.7%	1,376	11.0%	2,534	20.2%	3,663	75.5%	1,187	24.5%	4,850
August 2016	11,766	270	18	13,169	3,941	29.9%	1,308	9.9%	491	3.7%	3,311	25.1%	1,471	11.2%	2,647	20.1%	3,941	75.1%	1,307	24.9%	5,248
September 2016	13,277	383	25	14,637	4,654	31.8%	1,557	10.6%	305	2.1%	3,868	26.4%	1,699	11.6%	2,554	17.4%	4,654	74.9%	1,559	25.1%	6,213
October 2016	13,924	387	24	15,418	4,935	32.0%	1,623	10.5%	368	2.4%	4,100	26.6%	1,767	11.5%	2,625	17.0%	4,935	75.3%	1,622	24.7%	6,557
November 2016	13,310	441	30	14,666	4,677	31.9%	1,551	10.6%	300	2.0%	3,969	27.1%	1,667	11.4%	2,502	17.1%	4,677	75.1%	1,552	24.9%	6,229
December 2016	13,294	424	32	14,626	4,762	32.6%	1,579	10.8%	352	2.4%	3,916	26.8%	1,598	10.9%	2,419	16.5%	4,762	75.1%	1,580	24.9%	6,342
January 2017	14,182	603	45	15,375	5,111	33.2%	1,708	11.1%	321	2.1%	4,221	27.5%	1,670	10.9%	2,344	15.2%	5,111	75.0%	1,708	25.0%	6,819
February 2017	13,261	524	39	14,478	4,716	32.6%	1,503	10.4%	258	1.8%	3,882	26.8%	1,645	11.4%	2,474	17.1%	4,716	75.8%	1,504	24.2%	6,220
March 2017	14,751	538	33	16,228	5,349	33.0%	1,844	11.4%	426	2.6%	4,173	25.7%	1,892	11.7%	2,544	15.7%	5,349	74.4%	1,843	25.6%	7,192
April 2017	13,397	575	36	14,760	4,790	32.5%	1,489	10.1%	420	2.8%	4,037	27.4%	1,607	10.9%	2,417	16.4%	4,790	76.3%	1,490	23.7%	6,280
May 2017	13,397	575	36	17,359	5,847	33.7%	1,919	11.1%	378	2.2%	4,509	26.0%	2,028	11.7%	2,678	15.4%	5,847	75.3%	1,919	24.7%	7,766
June 2017	13,832	617	41	15,143	4,853	32.0%	1,664	11.0%	476	3.1%	4,063	26.8%	1,642	10.8%	2,445	16.1%	4,853	74.5%	1,665	25.5%	6,518
	13,308	467	32	14,845	4,762	32.1%	1,569	10.6%	364	2.4%	3,939	26.5%	1,682	11.3%	2,529	17.0%	4,762	75.2%	1,569	24.8%	6,331
Overall Total	172,999	6,071		192,982	61,900		20,391		4,726		51,213		21,870		32,882		61,900	75.2%	20,397	24.8%	82,297

¹ Comes from three distinct sources: (1) the Automatic Call Distribution (ACD) phone system; which keeps a count of the number of calls and call routing; (2) Monthly NJSpirit Intakes; which record decision making on calls received by hotline screeners, and (3) NJSpirit extracts of assigned CWS Referrals and CPS Reports.

² The number of Intakes, CPS Reports, and CWS Referrals are based on an extract from NJSpirit. Data extracted by the Office of Research, Evaluation, and Reporting on **July 17, 2017** includes all Intakes, CPS Reports, and CWS Referrals received from **June 1, 2017 through June 30, 2017**.

³ The number calls received through the ACD System that were directed to a screener from any call-in phone number.

⁴ The number of calls received through the ACD System that are abandoned either while waiting in queue or while ringing.

⁵ The number of Intakes entered in NJSpirit from the number of calls received.

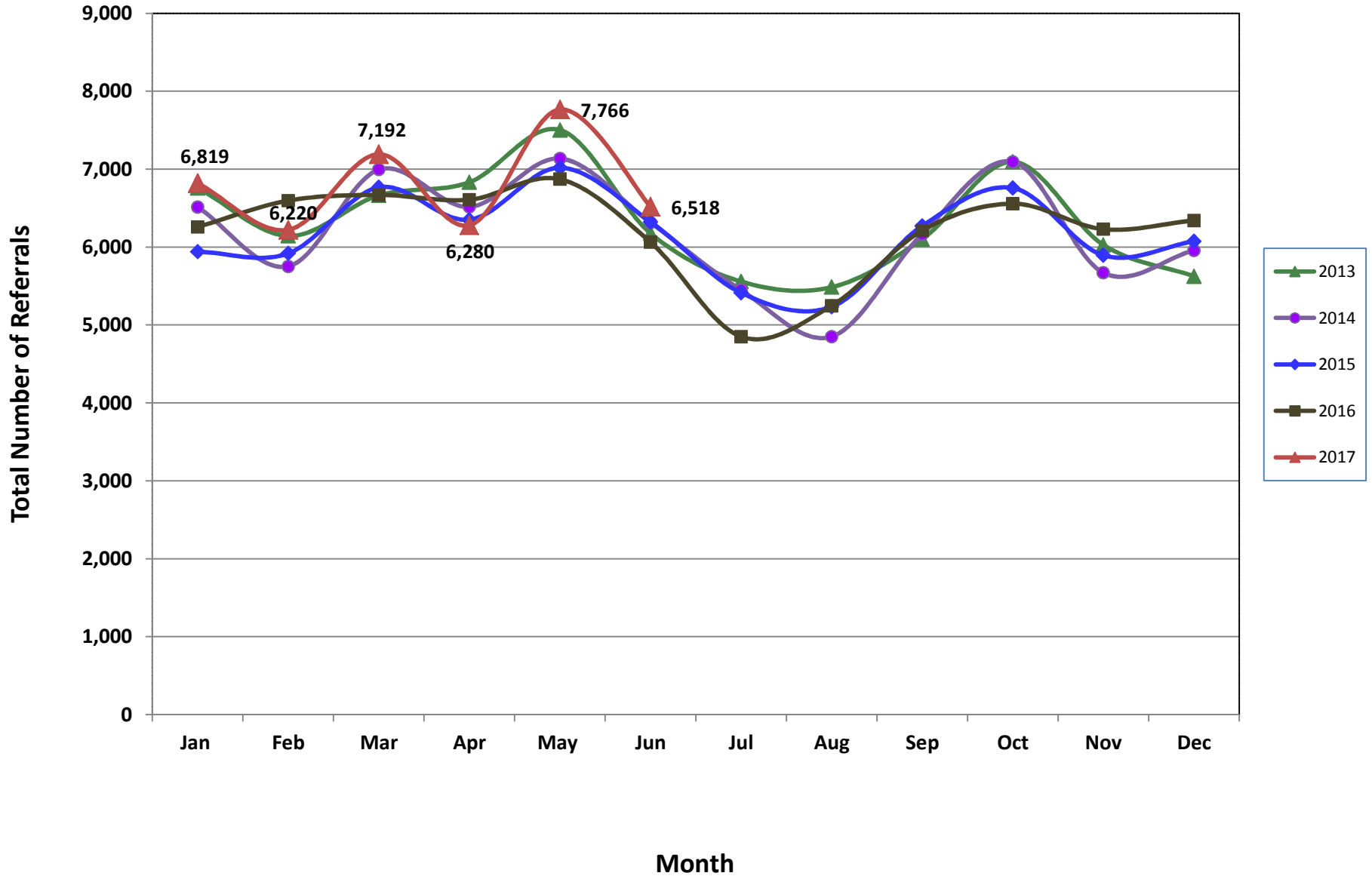
⁶ The number of Intakes recorded in NJSpirit, by type of Intake. There is not a one-to-one relationship between an ACD call and an Intake; multiple calls to State Central Registry (SCR) may result in a single Intake, or one call may result in multiple Intakes.

⁷ Intake: The process of documenting: a report of alleged abuse or neglect of a child (CPS); a request for services on behalf of a child, or a referral of a child for services (CWS); a call in which the caller provides additional or clarifying information about a current service case or active investigation (RI); informing a caller of, or referring a caller to, services available from other private or public sources (I&R); a call that requires no action by CP&P (NAR); or a response to a simple inquiry (IO).

⁸ NJ SPIRIT: NJ Statewide Protection Investigation and Reporting Information Tool case management system



CP&P Annual Trends in CPS Reports and CWS Referrals



The data contained in this report is considered preliminary and as a result, these figures might be different than the final reported figures. The data is produced for continuous quality improvement.

Table 2: Assignments to CP&P Offices: CPS Reports and CWS Referrals¹

Intake Date ³		CPS Reports ²	CWS Referrals ²	Total Assignments ²
2013	Jan 2013	5,464	1,296	6,760
	Feb 2013	4,966	1,177	6,143
	Mar 2013	5,355	1,309	6,664
	Apr 2013	5,430	1,402	6,832
	May 2013	5,993	1,510	7,503
	Jun 2013	4,947	1,230	6,177
	Jul 2013	4,330	1,228	5,558
	Aug 2013	4,330	1,155	5,485
	Sep 2013	4,851	1,251	6,102
	Oct 2013	5,614	1,481	7,095
	Nov 2013	4,694	1,334	6,028
	Dec 2013	4,397	1,229	5,626
	Total	60,371	15,602	75,973
2014	Jan 2014	5,097	1,416	6,513
	Feb 2014	4,457	1,295	5,752
	Mar 2014	5,408	1,586	6,994
	Apr 2014	5,049	1,467	6,516
	May 2014	5,501	1,635	7,136
	Jun 2014	4,796	1,517	6,313
	Jul 2014	4,202	1,247	5,449
	Aug 2014	3,629	1,222	4,851
	Sep 2014	4,668	1,498	6,166
	Oct 2014	5,509	1,586	7,095
	Nov 2014	4,254	1,416	5,670
	Dec 2014	4,509	1,447	5,956
	Total	57,079	17,332	74,411
2015	Jan 2015	4,549	1,391	5,940
	Feb 2015	4,574	1,345	5,919
	Mar 2015	5,187	1,580	6,767
	Apr 2015	4,967	1,384	6,351
	May 2015	5,457	1,561	7,018
	Jun 2015	4,887	1,436	6,323
	Jul 2015	4,140	1,273	5,413
	Aug 2015	3,978	1,256	5,234
	Sep 2015	4,776	1,495	6,271
	Oct 2015	5,139	1,619	6,758
	Nov 2015	4,417	1,477	5,894
	Dec 2015	4,530	1,544	6,074
	Total	56,601	17,361	73,962

Table 2: Assignments to CP&P Offices: CPS Reports and CWS Referrals¹

Intake Date ³		CPS Reports ²	CWS Referrals ²	Total Assignments ²
2016	Jan 2016	4,686	1,571	6,257
	Feb 2016	4,974	1,622	6,596
	Mar 2016	5,000	1,669	6,669
	Apr 2016	5,065	1,542	6,607
	May 2016	5,238	1,633	6,871
	Jun 2016	4,602	1,461	6,063
	Jul 2016	3,663	1,187	4,850
	Aug 2016	3,941	1,307	5,248
	Sep 2016	4,654	1,559	6,213
	Oct 2016	4,935	1,622	6,557
	Nov 2016	4,677	1,552	6,229
	Dec 2016	4,762	1,580	6,342
	Total	56,197	18,305	74,502
2017	Jan 2017	5,111	1,708	6,819
	Feb 2017	4,716	1,504	6,220
	Mar 2017	5,349	1,843	7,192
	Apr 2017	4,790	1,490	6,280
	May 2017	5,847	1,919	7,766
	June 2017	4,853	1,665	6,518
	Total	30,666	10,129	40,795
Grand Total		260,914	78,729	339,643

¹Source of Data: NJ SPIRIT

²A CPS Report or a CWS Referral may include multiple children in a family, with one or more allegation or request for services. In these cases, each CPS Report or CWS Referral is counted once - the CPS Report or the CWS Referral is the unit of analysis rather than the child.

³Prior to January 2014, the number of CPS Reports and CWS Referrals was based on the type of assignment of the CPS Report or CWS Referral. Beginning in January 2014, the number of CPS Reports and CWS Referrals is based on the number of CPS Reports and CWS Referrals received.

Table 3: Source of CPS Reports and CWS Referrals

	Source	Jun 2016	Jul 2016	Aug 2016	Sep 2016	Oct 2016	Nov 2016	Dec 2016	Jan 2017	Feb 2017	Mar 2017	Apr 2017	May 2017	June 2017		13 Month Total	
CPS Reports and CWS Referrals	School Staff	982	143	87	1,150	1,639	1,628	1,614	1,952	1,723	2,116	1,400	2,167	1,149	18%	17,750	21%
	Healthcare Provider	814	771	811	775	837	799	846	873	837	867	824	924	932	14%	10,910	13%
	Law Enforcement	1,152	1,048	1,093	1,013	1,049	989	936	992	881	1,022	1,133	1,177	1,072	16%	13,557	16%
	Government Agency	439	407	509	445	446	399	384	453	432	491	376	434	438	7%	5,653	7%
	Parent	546	521	591	555	517	507	569	544	476	554	517	632	586	9%	7,115	9%
	Relative/Friend/Neighbor	540	472	544	594	506	431	443	444	379	434	462	536	525	8%	6,310	8%
	Anonymous	697	560	611	710	642	605	666	654	645	715	633	837	754	12%	8,729	11%
	CP&P	120	112	132	125	123	117	99	122	105	136	110	128	144	2%	1,573	2%
	Court/Legal	124	143	130	135	124	98	142	126	152	162	132	141	183	3%	1,792	2%
	Community Group/Individual	238	262	286	272	257	260	251	280	229	278	296	336	283	4%	3,528	4%
	Facility Staff (incl Correctional Facility)	68	70	94	95	97	85	85	98	76	81	99	95	102	2%	1,145	1%
	Child (Self)	38	46	50	37	41	41	41	34	34	34	22	38	38	1%	494	1%
	Other	285	274	297	287	266	252	255	232	240	280	259	300	296	5%	3,523	4%
	Daycare/Babysitter	20	21	13	20	13	18	11	15	11	22	17	21	16	0%	218	0%
	Total		6,871	4,850	5,248	5,248	6,557	6,229	6,342	6,819	6,819	7,192	6,280	7,766	6,518		82,739

Table 4: Monthly Count of CPS Reports and CWS Referrals Assigned to Counties

County														Average Number of Assignments Last 13 Months	May 17 to Jun 17 Numerical Difference
	Jun 2016	Jul 2016	Aug 2016	Sep 2016	Oct 2016	Nov 2016	Dec 2016	Jan 2017	Feb 2017	Mar 2017	Apr 2017	May 2017	June 2017		
Atlantic	221	184	234	252	285	243	239	241	221	271	233	312	253	245	12
Bergen	354	251	264	340	370	352	384	423	375	409	370	425	351	359	-72
Burlington	260	238	262	309	293	325	259	333	289	343	262	394	283	296	-50
Camden	532	391	465	534	537	536	557	539	520	643	581	629	571	541	32
Cape May	67	71	78	73	78	68	63	68	81	85	79	118	76	77	8
Cumberland	202	184	183	209	201	230	229	277	213	248	243	260	236	224	-41
Essex	644	534	573	626	713	659	709	722	627	781	701	878	770	687	48
Gloucester	234	212	223	244	266	224	282	272	291	303	251	274	280	258	8
Hudson	400	304	279	403	450	389	433	449	413	453	379	519	434	408	-15
Hunterdon	42	36	38	44	36	46	54	46	49	57	39	59	37	45	-9
Mercer	255	227	234	272	230	280	224	288	236	277	251	327	272	259	-16
Middlesex	387	325	331	426	449	379	441	468	476	514	431	530	404	428	-64
Monmouth	353	272	327	347	382	332	348	391	374	399	349	435	357	359	-34
Morris	228	146	153	225	245	214	227	218	219	244	239	260	239	220	21
Ocean	354	316	344	353	408	364	384	416	378	420	390	473	377	383	-39
Passaic	401	299	331	397	471	439	431	518	413	522	412	550	424	431	-94
Salem	80	63	67	89	78	66	60	93	73	78	87	90	85	78	-8
Somerset	160	139	112	149	158	184	164	147	146	178	153	180	151	155	4
Sussex	91	90	87	101	80	96	104	101	84	106	74	102	93	93	-8
Union	295	255	244	323	316	312	306	341	303	361	317	375	335	314	-6
Warren	88	62	78	97	97	84	79	108	96	95	84	85	99	89	-9
County Subtotals	5,648	4,599	4,907	5,813	6,143	5,822	5,977	6,459	5,877	6,787	5,925	7,275	6,127	5,951	-332
Central Region IAIU	53	33	54	52	63	57	59	41	58	54	50	75	67	55	26
Metro Region IAIU	61	36	32	46	65	48	45	61	54	68	51	69	48	53	-13
Northern Region IAIU	66	27	45	62	76	70	52	65	58	68	48	87	49	59	-16
Southern Region IAIU	92	44	72	66	68	89	79	76	71	87	76	108	80	78	4
IAIU Subtotals	272	140	203	226	272	264	235	243	241	277	225	339	244	245	1
Unable to Determine¹	140	110	137	168	140	143	129	113	100	126	127	152	146	133	33
Other Offices	3	1	1	6	2	0	1	4	2	2	3	0	1	2	-3
Grand Total	6,063	4,850	5,248	6,213	6,557	6,229	6,342	6,819	6,220	7,192	6,280	7,766	6,518	6,331	-301

¹CPS Reports or CWS Referrals not assigned to an office through the Assignment Designee, but were assigned to an office for an assessment or investigation.



Table 5: Monthly Count of CPS Reports and CWS Referrals Assigned to CP&P Local Offices

County	Local Office	Type of Referral														Total
			Jun 2016	Jul 2016	Aug 2016	Sep 2016	Oct 2016	Nov 2016	Dec 2016	Jan 2017	Feb 2017	Mar 2017	Apr 2017	May 2017	June 2017	
ATLANTIC	Atlantic East	CPS	108	90	102	109	127	116	118	107	102	118	101	141	107	1,446
		CWS	34	25	44	38	34	42	33	27	21	35	34	45	41	453
		Total	142	115	146	147	161	158	151	134	123	153	135	186	148	1,899
	Atlantic West	CPS	66	51	72	82	101	60	75	73	69	86	74	102	76	987
		CWS	13	18	16	23	23	25	13	34	29	32	24	24	29	303
		Total	79	69	88	105	124	85	88	107	98	118	98	126	105	1,290
	County Totals	CPS	174	141	174	191	228	176	193	180	171	204	175	243	183	2,433
		CWS	47	43	60	61	57	67	46	61	50	67	58	69	70	756
		Total	221	184	234	252	285	243	239	241	221	271	233	312	253	3,189
BERGEN	Bergen Central	CPS	121	63	73	90	104	104	125	127	118	121	104	129	109	1,388
		CWS	39	37	29	28	34	40	44	52	42	45	42	51	31	514
		Total	160	100	102	118	138	144	169	179	160	166	146	180	140	1,902
	Bergen South	CPS	143	109	115	157	160	161	153	174	152	165	175	166	151	1,981
		CWS	51	42	47	65	72	47	62	70	63	78	49	79	60	785
		Total	194	151	162	222	232	208	215	244	215	243	224	245	211	2,766
	County Totals	CPS	264	172	188	247	264	265	278	301	270	286	279	295	260	3,369
		CWS	90	79	76	93	106	87	106	122	105	123	91	130	91	1,299
		Total	354	251	264	340	370	352	384	423	375	409	370	425	351	4,668
BURLINGTON	Burlington East	CPS	84	94	94	92	105	126	104	118	98	118	82	155	107	1,377
		CWS	34	34	33	49	41	33	30	45	40	55	34	61	35	524
		Total	118	128	127	141	146	159	134	163	138	173	116	216	142	1,901
	Burlington West	CPS	109	87	101	121	106	118	92	125	111	125	109	130	108	1,442
		CWS	33	23	34	47	41	48	33	45	40	45	37	48	33	507
		Total	142	110	135	168	147	166	125	170	151	170	146	178	141	1,949
	County Totals	CPS	193	181	195	213	211	244	196	243	209	243	191	285	215	2,819
		CWS	67	57	67	96	82	81	63	90	80	100	71	109	68	1,031
		Total	260	238	262	309	293	325	259	333	289	343	262	394	283	3,850
CAMDEN	Camden Central	CPS	122	92	97	115	146	121	114	106	113	158	119	125	136	1,564
		CWS	53	36	41	40	26	39	37	38	34	40	28	31	38	481
		Total	175	128	138	155	172	160	151	144	147	198	147	156	174	2,045
	Camden East	CPS	94	86	102	104	107	98	114	126	88	104	125	111	103	1,362
		CWS	28	31	21	34	32	34	43	43	30	33	32	46	32	439
		Total	122	117	123	138	139	132	157	169	118	137	157	157	135	1,801
	Camden North	CPS	95	56	79	97	101	95	102	102	107	131	120	155	114	1,354
		CWS	34	18	39	42	28	34	36	32	32	46	30	28	43	442
		Total	129	74	118	139	129	129	138	134	139	177	150	183	157	1,796
	Camden South	CPS	80	56	67	86	67	89	78	73	89	96	99	103	88	1,071
		CWS	26	16	19	16	30	26	33	19	27	35	28	30	17	322
		Total	106	72	86	102	97	115	111	92	116	131	127	133	105	1,393
	County Totals	CPS	391	290	345	402	421	403	408	407	397	489	463	494	441	5,351
		CWS	141	101	120	132	116	133	149	132	123	154	118	135	130	1,684
		Total	532	391	465	534	537	536	557	539	520	643	581	629	571	7,035
CAPE MAY	Cape May	CPS	51	51	65	62	62	48	53	52	65	68	50	100	67	794
		CWS	16	20	13	11	16	20	10	16	16	17	29	18	9	211
		Total	67	71	78	73	78	68	63	68	81	85	79	118	76	1,005
	County Totals	CPS	51	51	65	62	62	48	53	52	65	68	50	100	67	794
		CWS	16	20	13	11	16	20	10	16	16	17	29	18	9	211
		Total	67	71	78	73	78	68	63	68	81	85	79	118	76	1,005
CUMBERLAND	Cumberland East	CPS	61	46	40	48	40	58	70	70	59	60	65	70	48	735
		CWS	16	18	20	17	16	18	10	26	26	20	22	21	20	250
		Total	77	64	60	65	56	76	80	96	85	80	87	91	68	985
	Cumberland West	CPS	101	96	102	113	109	126	111	143	93	118	123	135	123	1,493
		CWS	24	24	21	31	36	28	38	38	35	50	33	34	45	437
		Total	125	120	123	144	145	154	149	181	128	168	156	169	168	1,930
	County Totals	CPS	162	142	142	161	149	184	181	213	152	178	188	205	171	2,228
		CWS	40	42	41	48	52	46	48	64	61	70	55	55	65	687
		Total	202	184	183	209	201	230	229	277	213	248	243	260	236	2,915

Data in this report is preliminary and may differ from any final report. This report is produced to ensure continuous quality improvement throughout DCF.



Table 5: Monthly Count of CPS Reports and CWS Referrals Assigned to CP&P Local Offices

County	Local Office	Type of Referral														Total
			Jun 2016	Jul 2016	Aug 2016	Sep 2016	Oct 2016	Nov 2016	Dec 2016	Jan 2017	Feb 2017	Mar 2017	Apr 2017	May 2017	June 2017	
ESSEX	Essex Central	CPS	112	75	77	91	105	94	108	111	81	77	78	118	92	1,219
		CWS	23	27	27	24	39	43	40	31	33	41	32	49	42	451
		Total	135	102	104	115	144	137	148	142	114	118	110	167	134	1,670
	Essex North	CPS	54	58	57	59	61	77	83	68	49	79	62	87	84	878
		CWS	24	29	14	27	26	27	25	27	24	26	35	31	32	347
		Total	78	87	71	86	87	104	108	95	73	105	97	118	116	1,225
	Essex South	CPS	62	47	46	55	67	58	55	71	69	69	65	76	62	802
		CWS	34	19	21	25	26	25	20	24	16	31	22	32	21	316
		Total	96	66	67	80	93	83	75	95	85	100	87	108	83	1118
	Newark Center City	CPS	95	64	69	86	91	79	95	95	81	103	102	121	114	1195
		CWS	25	24	25	28	33	36	40	22	25	40	31	38	47	414
		Total	120	88	94	114	124	115	135	117	106	143	133	159	161	1609
	Newark Northeast	CPS	72	56	94	90	86	64	74	95	89	104	104	108	103	1139
		CWS	24	22	29	28	44	23	34	38	25	46	39	39	32	423
		Total	96	78	123	118	130	87	108	133	114	150	143	147	135	1562
	Newark South	CPS	80	80	84	79	95	94	109	102	101	120	95	128	99	1266
		CWS	39	33	30	34	40	39	26	38	34	45	36	51	42	487
		Total	119	113	114	113	135	133	135	140	135	165	131	179	141	1753
County Totals	CPS	475	380	427	460	505	466	524	542	470	552	506	638	554	6499	
	CWS	169	154	146	166	208	193	185	180	157	229	195	240	216	2438	
	Total	644	534	573	626	713	659	709	722	627	781	701	878	770	8937	
GLOUCESTER	Gloucester East	CPS	89	75	84	84	93	94	101	96	112	109	85	104	106	1232
		CWS	26	28	26	23	30	24	26	28	28	29	27	35	31	361
		Total	115	103	110	107	123	118	127	124	140	138	112	139	137	1593
	Gloucester West	CPS	85	90	79	110	123	84	131	106	119	125	103	118	104	1377
		CWS	34	19	34	27	20	22	24	42	32	40	36	17	39	386
		Total	119	109	113	137	143	106	155	148	151	165	139	135	143	1763
	County Totals	CPS	174	165	163	194	216	178	232	202	231	234	188	222	210	2609
		CWS	60	47	60	50	50	46	50	70	60	69	63	52	70	747
		Total	234	212	223	244	266	224	282	272	291	303	251	274	280	3356
HUDSON	Hudson Central	CPS	52	61	56	72	82	65	80	80	69	80	89	78	84	948
		CWS	34	21	10	32	33	22	36	39	34	27	26	34	32	380
		Total	86	82	66	104	115	87	116	119	103	107	115	112	116	1328
	Hudson North	CPS	77	62	52	81	99	79	72	85	78	87	69	103	67	1011
		CWS	30	23	18	30	29	29	30	30	36	42	21	38	39	395
		Total	107	85	70	111	128	108	102	115	114	129	90	141	106	1406
	Hudson South	CPS	71	52	56	71	68	81	71	86	91	75	53	101	70	946
		CWS	30	28	30	24	34	41	36	36	30	36	16	45	33	419
		Total	101	80	86	95	102	122	107	122	121	111	69	146	103	1365
	Hudson West	CPS	84	49	41	67	78	52	84	63	53	71	74	89	77	882
		CWS	22	8	16	26	27	20	24	30	22	35	31	31	32	324
		Total	106	57	57	93	105	72	108	93	75	106	105	120	109	1206
County Totals	CPS	284	224	205	291	327	277	307	314	291	313	285	371	298	3787	
	CWS	116	80	74	112	123	112	126	135	122	140	94	148	136	1518	
	Total	400	304	279	403	450	389	433	449	413	453	379	519	434	5305	
HUNTERDON	Hunterdon	CPS	33	28	25	33	25	28	41	32	36	47	27	38	31	424
		CWS	9	8	13	11	11	18	13	14	13	10	12	21	6	159
		Total	42	36	38	44	36	46	54	46	49	57	39	59	37	583
	County Totals	CPS	33	28	25	33	25	28	41	32	36	47	27	38	31	424
		CWS	9	8	13	11	11	18	13	14	13	10	12	21	6	159
Total	42	36	38	44	36	46	54	46	49	57	39	59	37	583		
MERCER	Mercer North	CPS	103	92	89	105	91	122	77	107	91	95	89	120	98	1279
		CWS	32	21	27	48	24	27	25	37	31	45	23	47	29	416
		Total	135	113	116	153	115	149	102	144	122	140	112	167	127	1695
	Mercer South	CPS	91	81	91	74	83	98	87	109	89	105	104	118	113	1243
		CWS	29	33	27	45	32	33	35	35	25	32	35	42	32	435
		Total	120	114	118	119	115	131	122	144	114	137	139	160	145	1678
	County Totals	CPS	194	173	180	179	174	220	164	216	180	200	193	238	211	2522
		CWS	61	54	54	93	56	60	60	72	56	77	58	89	61	851
Total	255	227	234	272	230	280	224	288	236	277	251	327	272	3373		

Data in this report is preliminary and may differ from any final report. This report is produced to ensure continuous quality improvement throughout DCF.



Table 5: Monthly Count of CPS Reports and CWS Referrals Assigned to CP&P Local Offices

County	Local Office	Type of Referral	Jun 2016	Jul 2016	Aug 2016	Sep 2016	Oct 2016	Nov 2016	Dec 2016	Jan 2017	Feb 2017	Mar 2017	Apr 2017	May 2017	June 2017	Total
MIDDLESEX	Middlesex Central	CPS	80	57	56	103	93	73	70	91	78	105	103	95	78	1082
		CWS	26	19	16	15	24	14	25	27	24	21	22	39	25	297
		Total	106	76	72	118	117	87	95	118	102	126	125	134	103	1379
	Middlesex Coastal	CPS	101	107	89	111	128	106	131	121	150	151	121	135	112	1563
		CWS	35	26	36	35	40	33	39	46	42	40	32	47	43	494
		Total	136	133	125	146	168	139	170	167	192	191	153	182	155	2057
	Middlesex West	CPS	117	90	95	123	130	114	134	154	149	148	119	160	111	1644
		CWS	28	26	39	39	34	39	42	29	33	49	34	54	35	481
		Total	145	116	134	162	164	153	176	183	182	197	153	214	146	2125
	County Totals	CPS	298	254	240	337	351	293	335	366	377	404	343	390	301	4289
		CWS	89	71	91	89	98	86	106	102	99	110	88	140	103	1272
		Total	387	325	331	426	449	379	441	468	476	514	431	530	404	5561
MONMOUTH	Monmouth North	CPS	154	105	128	137	156	142	134	160	159	154	149	174	145	1897
		CWS	36	29	49	43	56	42	29	49	41	47	34	64	52	571
		Total	190	134	177	180	212	184	163	209	200	201	183	238	197	2468
	Monmouth South	CPS	127	102	118	134	127	112	147	130	120	149	113	144	119	1642
		CWS	36	36	32	33	43	36	38	52	54	49	53	53	41	556
		Total	163	138	150	167	170	148	185	182	174	198	166	197	160	2198
	County Totals	CPS	281	207	246	271	283	254	281	290	279	303	262	318	264	3539
		CWS	72	65	81	76	99	78	67	101	95	96	87	117	93	1127
		Total	353	272	327	347	382	332	348	391	374	399	349	435	357	4666
MORRIS	Morris East	CPS	75	48	37	73	88	79	72	72	68	78	83	88	82	943
		CWS	22	22	11	22	29	31	24	27	23	38	31	28	29	337
		Total	97	70	48	95	117	110	96	99	91	116	114	116	111	1280
	Morris West	CPS	86	56	77	90	92	74	87	78	97	89	90	104	93	1113
		CWS	45	20	28	40	36	30	44	41	31	39	35	40	35	464
		Total	131	76	105	130	128	104	131	119	128	128	125	144	128	1577
	County Totals	CPS	161	104	114	163	180	153	159	150	165	167	173	192	175	2056
		CWS	67	42	39	62	65	61	68	68	54	77	66	68	64	801
		Total	228	146	153	225	245	214	227	218	219	244	239	260	239	2857
OCEAN	Ocean North	CPS	152	142	142	130	165	151	154	163	136	180	165	193	148	2021
		CWS	44	29	39	43	49	41	51	47	40	48	43	60	41	575
		Total	196	171	181	173	214	192	205	210	176	228	208	253	189	2596
	Ocean South	CPS	120	115	117	138	138	133	131	159	163	156	148	182	133	1833
		CWS	38	30	46	42	56	39	48	47	39	36	34	38	55	548
		Total	158	145	163	180	194	172	179	206	202	192	182	220	188	2381
	County Totals	CPS	272	257	259	268	303	284	285	322	299	336	313	375	281	3854
		CWS	82	59	85	85	105	80	99	94	79	84	77	98	96	1123
		Total	354	316	344	353	408	364	384	416	378	420	390	473	377	4977
PASSAIC	Passaic Central	CPS	183	122	121	152	171	176	152	184	175	182	168	197	150	2133
		CWS	55	41	42	53	71	82	68	85	73	84	63	82	52	851
		Total	238	163	163	205	242	258	220	269	248	266	231	279	202	2984
	Passaic North	CPS	120	96	121	129	150	129	146	178	120	182	130	194	157	1852
		CWS	43	40	47	63	79	52	65	71	45	74	51	77	65	772
		Total	163	136	168	192	229	181	211	249	165	256	181	271	222	2624
	County Totals	CPS	303	218	242	281	321	305	298	362	295	364	298	391	307	3985
		CWS	98	81	89	116	150	134	133	156	118	158	114	159	117	1623
		Total	401	299	331	397	471	439	431	518	413	522	412	550	424	5608
SALEM	Salem	CPS	57	52	48	63	59	51	45	80	57	61	72	65	68	778
		CWS	23	11	19	26	19	15	15	13	16	17	15	25	17	231
		Total	80	63	67	89	78	66	60	93	73	78	87	90	85	1009
	County Totals	CPS	57	52	48	63	59	51	45	80	57	61	72	65	68	778
		CWS	23	11	19	26	19	15	15	13	16	17	15	25	17	231
Total	80	63	67	89	78	66	60	93	73	78	87	90	85	1009		
SOMERSET	Somerset	CPS	129	107	88	115	119	136	122	111	109	126	122	135	121	1540
		CWS	31	32	24	34	39	48	42	36	37	52	31	45	30	481
		Total	160	139	112	149	158	184	164	147	146	178	153	180	151	2021
	County Totals	CPS	129	107	88	115	119	136	122	111	109	126	122	135	121	1540
		CWS	31	32	24	34	39	48	42	36	37	52	31	45	30	481
Total	160	139	112	149	158	184	164	147	146	178	153	180	151	2021		

Data in this report is preliminary and may differ from any final report. This report is produced to ensure continuous quality improvement throughout DCF.

Table 5: Monthly Count of CPS Reports and CWS Referrals Assigned to CP&P Local Offices

County	Local Office	Type of Referral														Total
			Jun 2016	Jul 2016	Aug 2016	Sep 2016	Oct 2016	Nov 2016	Dec 2016	Jan 2017	Feb 2017	Mar 2017	Apr 2017	May 2017	June 2017	
SUSSEX	Sussex	CPS	68	74	69	79	55	70	71	71	68	85	52	70	67	899
		CWS	23	16	18	22	25	26	33	30	16	21	22	32	26	310
		Total	91	90	87	101	80	96	104	101	84	106	74	102	93	1209
	County Totals	CPS	68	74	69	79	55	70	71	71	68	85	52	70	67	899
		Total	91	90	87	101	80	96	104	101	84	106	74	102	93	1209
UNION	Union Central	CPS	67	60	55	78	84	82	83	86	75	94	80	87	84	1015
		CWS	29	24	27	26	22	28	25	38	20	31	21	21	35	347
		Total	96	84	82	104	106	110	108	124	95	125	101	108	119	1362
	Union East	CPS	79	67	66	74	77	78	73	98	82	94	82	97	97	1064
		CWS	28	26	23	28	35	33	31	29	25	22	30	35	27	372
		Total	107	93	89	102	112	111	104	127	107	116	112	132	124	1436
	Union West	CPS	60	57	49	90	78	65	62	68	67	87	86	94	57	920
		CWS	32	21	24	27	20	26	32	22	34	33	18	41	35	365
		Total	92	78	73	117	98	91	94	90	101	120	104	135	92	1285
	County Totals	CPS	206	184	170	242	239	225	218	252	224	275	248	278	238	2999
		CWS	89	71	74	81	77	87	88	89	79	86	69	97	97	1084
		Total	295	255	244	323	316	312	306	341	303	361	317	375	335	4083
WARREN	Warren	CPS	67	49	68	76	79	68	57	88	68	68	61	64	68	881
		CWS	21	13	10	21	18	16	22	20	28	27	23	21	31	271
		Total	88	62	78	97	97	84	79	108	96	95	84	85	99	1152
	County Totals	CPS	67	49	68	76	79	68	57	88	68	68	61	64	68	881
		Total	88	62	78	97	97	84	79	108	96	95	84	85	99	1152
County CPS Referral Total		CPS	4,237	3,453	3,653	4,328	4,571	4,328	4,448	4,794	4,413	5,003	4,489	5,407	4,531	57,655
County CWS Referral Total		CWS	1,411	1,146	1,254	1,485	1,572	1,494	1,529	1,665	1,464	1,784	1,436	1,868	1,596	19,704
County Referral Total		Total	5,648	4,599	4,907	5,813	6,143	5,822	5,977	6,459	5,877	6,787	5,925	7,275	6,127	77,359
Central Region IAIU	CPS	53	33	54	52	63	57	59	41	58	54	50	75	67	716	
	CWS	0	0	0	0	0	0	0	0	0	0	0	0	0	0	
	Total	53	33	54	52	63	57	59	41	58	54	50	75	67	716	
Metro Region IAIU	CPS	61	36	32	46	65	48	45	61	54	68	51	69	48	684	
	CWS	0	0	0	0	0	0	0	0	0	0	0	0	0	0	
	Total	61	36	32	46	65	48	45	61	54	68	51	69	48	684	
Northern Region IAIU	CPS	66	27	45	62	76	70	52	65	58	68	48	87	49	773	
	CWS	0	0	0	0	0	0	0	0	0	0	0	0	0	0	
	Total	66	27	45	62	76	70	52	65	58	68	48	87	49	773	
Southern Region IAIU	CPS	92	44	72	66	68	88	79	76	71	87	76	108	80	1,007	
	CWS	0	0	0	0	0	1	0	0	0	0	0	0	0	1	
	Total	92	44	72	66	68	89	79	76	71	87	76	108	80	1,008	
IAIU CPS Subtotal		CPS	272	140	203	226	272	263	235	243	241	277	225	339	244	3,180
IAIU CWS Subtotal		CWS	0	0	0	0	0	1	0	0	0	0	0	0	1	
IAIU Subtotal		Total	272	140	203	226	272	264	235	243	241	277	225	339	244	3,181
County and IAIU CPS Subtotal		CPS	4,509	3,593	3,856	4,554	4,843	4,591	4,683	5,037	4,654	5,280	4,714	5,746	4,775	60,835
County and IAIU CWS Subtotal		CWS	1,411	1,146	1,254	1,485	1,572	1,495	1,529	1,665	1,464	1,784	1,436	1,868	1,596	19,705
Unable to Determine⁽¹⁾		Total	140	110	137	168	140	143	129	113	100	126	127	152	146	1,731
Other Offices		Total	3	1	1	6	2	0	1	4	2	2	3	0	1	26
Grand Total		Total	6,063	4,850	5,248	6,213	6,557	6,229	6,342	6,819	6,220	7,192	6,280	7,766	6,518	82,297

⁽¹⁾CPS Reports or CWS Referrals not assigned to an office through the Assignment Designee, but were assigned to an office for an assessment or investigation.