



## **Child Protection and Permanency**

# **Monthly Screening and Investigation Report August 2017**

Allison Blake, Ph.D., L.S.W.  
Commissioner

September 20, 2017



## Table of Contents

Table 1: NJ State Central Registry Activity: Monthly Child Abuse and Neglect Hotline Calls, Intakes and Assignments to Child Protection & Permanency (CP&P) Offices

---

Chart 1: CP&P Annual Trends in Child Protection Services (CPS) Reports and Child Welfare Services (CWS) Referrals

---

Table 2: Assignments to CP&P Offices: CPS Reports and CWS Referrals

---

Table 3: Source of CPS Reports and CWS Referrals

---

Table 4: Monthly Count of CPS Reports and CWS Referrals Assigned to Counties

---

Table 5: Monthly Count of CPS Reports and CWS Referrals Assigned to CP&P Local Offices

---

**Table 1: NJ State Central Registry Activity: Monthly Child Abuse and Neglect Hotline Calls, Intakes and Assignments to CP&P Offices<sup>1,2,7</sup>**

2016 - 2017	Hotline Call Activity				Intakes Recorded in NJ SPIRIT <sup>6,8</sup>												Assignments to CP&P Offices				
	Total Calls to SCR <sup>3</sup>	Abandon Calls <sup>4</sup>	Average Time to Answer (seconds)	Resulting NJS Intakes <sup>5</sup>	CPS Reports		CWS Referrals		No Action Required (NAR)		Related Information (RI)		Information & Referral (I&R)		Information Only (IO)		CPS Reports		CWS Referrals		Total
					n	%	n	%	n	%	n	%	n	%	n	%	n	%	n	%	
August 2016	11,766	270	18	13,169	3,941	29.9%	1,308	9.9%	491	3.7%	3,311	25.1%	1,471	11.2%	2,647	20.1%	3,941	75.1%	1,307	24.9%	5,248
September 2016	13,277	383	25	14,637	4,654	31.8%	1,557	10.6%	305	2.1%	3,868	26.4%	1,699	11.6%	2,554	17.4%	4,654	74.9%	1,559	25.1%	6,213
October 2016	13,924	387	24	15,418	4,935	32.0%	1,623	10.5%	368	2.4%	4,100	26.6%	1,767	11.5%	2,625	17.0%	4,935	75.3%	1,622	24.7%	6,557
November 2016	13,310	441	30	14,666	4,677	31.9%	1,551	10.6%	300	2.0%	3,969	27.1%	1,667	11.4%	2,502	17.1%	4,677	75.1%	1,552	24.9%	6,229
December 2016	13,294	424	32	14,626	4,762	32.6%	1,579	10.8%	352	2.4%	3,916	26.8%	1,598	10.9%	2,419	16.5%	4,762	75.1%	1,580	24.9%	6,342
January 2017	14,182	603	45	15,375	5,111	33.2%	1,708	11.1%	321	2.1%	4,221	27.5%	1,670	10.9%	2,344	15.2%	5,111	75.0%	1,708	25.0%	6,819
February 2017	13,261	524	39	14,478	4,716	32.6%	1,503	10.4%	258	1.8%	3,882	26.8%	1,645	11.4%	2,474	17.1%	4,716	75.8%	1,504	24.2%	6,220
March 2017	14,751	538	33	16,228	5,349	33.0%	1,844	11.4%	426	2.6%	4,173	25.7%	1,892	11.7%	2,544	15.7%	5,349	74.4%	1,843	25.6%	7,192
April 2017	13,397	575	36	14,760	4,790	32.5%	1,489	10.1%	420	2.8%	4,037	27.4%	1,607	10.9%	2,417	16.4%	4,790	76.3%	1,490	23.7%	6,280
May 2017	13,397	575	36	17,359	5,847	33.7%	1,919	11.1%	378	2.2%	4,509	26.0%	2,028	11.7%	2,678	15.4%	5,847	75.3%	1,919	24.7%	7,766
June 2017	13,832	617	41	15,143	4,853	32.0%	1,664	11.0%	476	3.1%	4,063	26.8%	1,642	10.8%	2,445	16.1%	4,853	74.5%	1,665	25.5%	6,518
July 2017	12,245	710	57	13,369	3,814	28.5%	1,389	10.4%	336	2.5%	3,877	29.0%	1,436	10.7%	2,517	18.8%	3,814	73.3%	1,389	26.7%	5,203
<b>August 2017</b>	<b>11,672</b>	<b>445</b>	<b>38</b>	<b>12,927</b>	<b>3,866</b>	<b>29.9%</b>	<b>1,338</b>	<b>10.4%</b>	<b>393</b>	<b>3.0%</b>	<b>3,447</b>	<b>26.7%</b>	<b>1,535</b>	<b>11.9%</b>	<b>2,348</b>	<b>18.2%</b>	<b>3,866</b>	<b>74.3%</b>	<b>1,340</b>	<b>25.7%</b>	<b>5,206</b>
	<b>13,254</b>	<b>499</b>	<b>35</b>	<b>14,781</b>	<b>4,717</b>	<b>31.9%</b>	<b>1,575</b>	<b>10.7%</b>	<b>371</b>	<b>2.5%</b>	<b>3,952</b>	<b>26.7%</b>	<b>1,666</b>	<b>11.3%</b>	<b>2,501</b>	<b>16.9%</b>	<b>4,717</b>	<b>75.0%</b>	<b>1,575</b>	<b>25.0%</b>	<b>6,292</b>
<b>Overall Total</b>	<b>172,308</b>	<b>6,492</b>		<b>192,155</b>	<b>61,315</b>		<b>20,472</b>		<b>4,824</b>		<b>51,373</b>		<b>21,657</b>		<b>32,514</b>		<b>61,315</b>	<b>75.0%</b>	<b>20,478</b>	<b>25.0%</b>	<b>81,793</b>

<sup>1</sup> Comes from three distinct sources: (1) the Automatic Call Distribution (ACD) phone system; which keeps a count of the number of calls and call routing; (2) Monthly NJSpirit Intakes; which record decision making on calls received by hotline screeners, and (3) NJSpirit extracts of assigned CWS Referrals and CPS Reports.

<sup>2</sup> The number of Intakes, CPS Reports, and CWS Referrals are based on an extract from NJSpirit. Data extracted by the Office of Research, Evaluation, and Reporting on **September 19, 2017** includes all Intakes, CPS Reports, and CWS Referrals received from **August 1, 2017 through August 31, 2017**.

<sup>3</sup> The number calls received through the ACD System that were directed to a screener from any call-in phone number.

<sup>4</sup> The number of calls received through the ACD System that are abandoned either while waiting in queue or while ringing.

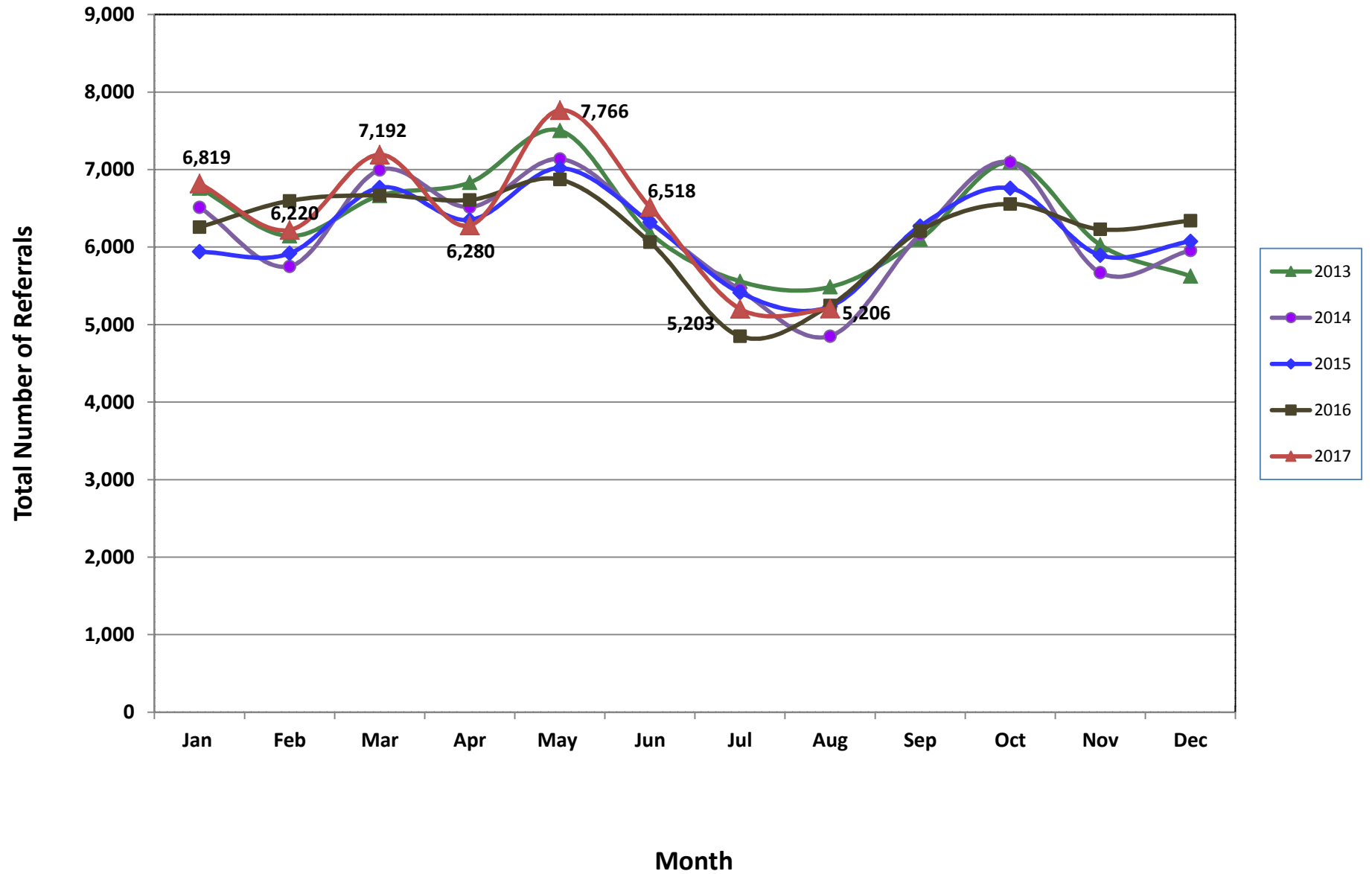
<sup>5</sup> The number of Intakes entered in NJSpirit from the number of calls received.

<sup>6</sup> The number of Intakes recorded in NJSpirit, by type of Intake. There is not a one-to-one relationship between an ACD call and an Intake; multiple calls to State Central Registry (SCR) may result in a single Intake, or one call may result in multiple Intakes.

<sup>7</sup> Intake: The process of documenting: a report of alleged abuse or neglect of a child (CPS); a request for services on behalf of a child, or a referral of a child for services (CWS); a call in which the caller provides additional or clarifying information about a current service case or active investigation (RI); informing a caller of, or referring a caller to, services available from other private or public sources (I&R); a call that requires no action by CP&P (NAR); or a response to a simple inquiry (IO).

<sup>8</sup> NJ SPIRIT: NJ Statewide Protection Investigation and Reporting Information Tool case management system

### CP&P Annual Trends in CPS Reports and CWS Referrals



**Table 2: Assignments to CP&P Offices: CPS Reports and CWS Referrals<sup>1</sup>**

Intake Date <sup>3</sup>		CPS Reports <sup>2</sup>	CWS Referrals <sup>2</sup>	Total Assignments <sup>2</sup>
2013	Jan 2013	5,464	1,296	6,760
	Feb 2013	4,966	1,177	6,143
	Mar 2013	5,355	1,309	6,664
	Apr 2013	5,430	1,402	6,832
	May 2013	5,993	1,510	7,503
	Jun 2013	4,947	1,230	6,177
	Jul 2013	4,330	1,228	5,558
	Aug 2013	4,330	1,155	5,485
	Sep 2013	4,851	1,251	6,102
	Oct 2013	5,614	1,481	7,095
	Nov 2013	4,694	1,334	6,028
	Dec 2013	4,397	1,229	5,626
	<b>Total</b>	<b>60,371</b>	<b>15,602</b>	<b>75,973</b>
2014	Jan 2014	5,097	1,416	6,513
	Feb 2014	4,457	1,295	5,752
	Mar 2014	5,408	1,586	6,994
	Apr 2014	5,049	1,467	6,516
	May 2014	5,501	1,635	7,136
	Jun 2014	4,796	1,517	6,313
	Jul 2014	4,202	1,247	5,449
	Aug 2014	3,629	1,222	4,851
	Sep 2014	4,668	1,498	6,166
	Oct 2014	5,509	1,586	7,095
	Nov 2014	4,254	1,416	5,670
	Dec 2014	4,509	1,447	5,956
	<b>Total</b>	<b>57,079</b>	<b>17,332</b>	<b>74,411</b>
2015	Jan 2015	4,549	1,391	5,940
	Feb 2015	4,574	1,345	5,919
	Mar 2015	5,187	1,580	6,767
	Apr 2015	4,967	1,384	6,351
	May 2015	5,457	1,561	7,018
	Jun 2015	4,887	1,436	6,323
	Jul 2015	4,140	1,273	5,413
	Aug 2015	3,978	1,256	5,234
	Sep 2015	4,776	1,495	6,271
	Oct 2015	5,139	1,619	6,758
	Nov 2015	4,417	1,477	5,894
	Dec 2015	4,530	1,544	6,074
	<b>Total</b>	<b>56,601</b>	<b>17,361</b>	<b>73,962</b>

**Table 2: Assignments to CP&P Offices: CPS Reports and CWS Referrals<sup>1</sup>**

Intake Date <sup>3</sup>		CPS Reports <sup>2</sup>	CWS Referrals <sup>2</sup>	Total Assignments <sup>2</sup>
2016	Jan 2016	4,686	1,571	6,257
	Feb 2016	4,974	1,622	6,596
	Mar 2016	5,000	1,669	6,669
	Apr 2016	5,065	1,542	6,607
	May 2016	5,238	1,633	6,871
	Jun 2016	4,602	1,461	6,063
	Jul 2016	3,663	1,187	4,850
	Aug 2016	3,941	1,307	5,248
	Sep 2016	4,654	1,559	6,213
	Oct 2016	4,935	1,622	6,557
	Nov 2016	4,677	1,552	6,229
	Dec 2016	4,762	1,580	6,342
	<b>Total</b>	<b>56,197</b>	<b>18,305</b>	<b>74,502</b>
2017	Jan 2017	5,111	1,708	6,819
	Feb 2017	4,716	1,504	6,220
	Mar 2017	5,349	1,843	7,192
	Apr 2017	4,790	1,490	6,280
	May 2017	5,847	1,919	7,766
	Jun 2017	4,853	1,665	6,518
	Jul 2017	3,814	1,389	5,203
	Aug 2017	3,866	1,340	5,206
	<b>Total</b>	<b>38,346</b>	<b>12,858</b>	<b>45,998</b>
<b>Grand Total</b>		<b>268,594</b>	<b>81,458</b>	<b>344,846</b>

<sup>1</sup>Source of Data: NJ SPIRIT

<sup>2</sup>A CPS Report or a CWS Referral may include multiple children in a family, with one or more allegation or request for services. In these cases, each CPS Report or CWS Referral is counted once - the CPS Report or the CWS Referral is the unit of analysis rather than the child.

<sup>3</sup>Prior to January 2014, the number of CPS Reports and CWS Referrals was based on the type of assignment of the CPS Report or CWS Referral. Beginning in January 2014, the number of CPS Reports and CWS Referrals is based on the number of CPS Reports and CWS Referrals received.

**Table 3: Source of CPS Reports and CWS Referrals**

	Source	Aug 2016	Sep 2016	Oct 2016	Nov 2016	Dec 2016	Jan 2017	Feb 2017	Mar 2017	Apr 2017	May 2017	Jun 2017	Jul 2017	August 2017		13 Month Total	
CPS Reports and CWS Referrals	School Staff	87	1,150	1,639	1,628	1,614	1,952	1,723	2,116	1,400	2,167	1,149	150	91	2%	16,866	20%
	Healthcare Provider	811	775	837	799	846	873	837	867	824	924	932	818	873	17%	11,016	13%
	Law Enforcement	1,093	1,013	1,049	989	936	992	881	1,022	1,133	1,177	1,072	1148	1169	22%	13,674	16%
	Government Agency	509	445	446	399	384	453	432	491	376	434	438	400	423	8%	5,630	7%
	Parent	591	555	517	507	569	544	476	554	517	632	586	571	535	10%	7,154	9%
	Relative/Friend/Neighbor	544	594	506	431	443	444	379	434	462	536	525	541	494	9%	6,333	8%
	Anonymous	611	710	642	605	666	654	645	715	633	837	754	580	627	12%	8,679	10%
	CP&P	132	125	123	117	99	122	105	136	110	128	144	145	141	3%	1,627	2%
	Court/Legal	130	135	124	98	142	126	152	162	132	141	183	131	161	3%	1,817	2%
	Community Group/Individual	286	272	257	260	251	280	229	278	296	336	283	288	307	6%	3,623	4%
	Facility Staff (incl Correctional Facility)	94	95	97	85	85	98	76	81	99	95	102	90	92	2%	1,189	1%
	Child (Self)	50	37	41	41	41	34	34	34	22	38	38	35	41	1%	486	1%
	Other	297	287	266	252	255	232	240	280	259	300	296	283	235	5%	3,482	4%
	Daycare/Babysitter	13	20	13	18	11	15	11	22	17	21	16	23	17	0%	217	0%
	<b>Total</b>		<b>6,871</b>	<b>6,213</b>	<b>6,557</b>	<b>5,248</b>	<b>6,342</b>	<b>6,819</b>	<b>6,220</b>	<b>7,192</b>	<b>6,819</b>	<b>7,766</b>	<b>6,518</b>	<b>5,203</b>	<b>5,206</b>		<b>82,974</b>

**Table 4: Monthly Count of CPS Reports and CWS Referrals Assigned to Counties**

County														Average Number of Assignments Last 13 Months	Jul 17 to Aug 17 Numerical Difference
	Aug 2016	Sep 2016	Oct 2016	Nov 2016	Dec 2016	Jan 2017	Feb 2017	Mar 2017	Apr 2017	May 2017	Jun 2017	Jul 2017	Aug 2017		
Atlantic	234	252	285	243	239	241	221	271	233	312	253	214	245	249	31
Bergen	264	340	370	352	384	423	375	409	370	425	351	284	291	357	7
Burlington	262	309	293	325	259	333	289	343	262	394	283	262	256	298	-6
Camden	465	534	537	536	557	539	520	643	581	629	571	447	492	542	45
Cape May	78	73	78	68	63	68	81	85	79	118	76	80	64	78	-16
Cumberland	183	209	201	230	229	277	213	248	243	260	236	203	207	226	4
Essex	573	626	713	659	709	722	627	781	701	878	770	561	585	685	24
Gloucester	223	244	266	224	282	272	291	303	251	274	280	221	235	259	14
Hudson	279	403	450	389	433	449	413	453	379	519	434	295	290	399	-5
Hunterdon	38	44	36	46	54	46	49	57	39	59	37	49	40	46	-9
Mercer	234	272	230	280	224	288	236	277	251	327	272	210	222	256	12
Middlesex	331	426	449	379	441	468	476	514	431	530	404	350	257	420	-93
Monmouth	327	347	382	332	348	391	374	399	349	435	357	276	264	352	-12
Morris	153	225	245	214	227	218	219	244	239	260	239	163	168	216	5
Ocean	344	353	408	364	384	416	378	420	390	473	377	339	351	384	12
Passaic	331	397	471	439	431	518	413	522	412	550	424	324	319	427	-5
Salem	67	89	78	66	60	93	73	78	87	90	85	74	54	76	-20
Somerset	112	149	158	184	164	147	146	178	153	180	151	111	117	150	6
Sussex	87	101	80	96	104	101	84	106	74	102	93	72	92	92	20
Union	244	323	316	312	306	341	303	361	317	375	335	255	246	310	-9
Warren	78	97	97	84	79	108	96	95	84	85	99	109	69	91	-40
<b>County Subtotals</b>	<b>4,907</b>	<b>5,813</b>	<b>6,143</b>	<b>5,822</b>	<b>5,977</b>	<b>6,459</b>	<b>5,877</b>	<b>6,787</b>	<b>5,925</b>	<b>7,275</b>	<b>6,127</b>	<b>4,899</b>	<b>4,864</b>	<b>5,913</b>	<b>-35</b>
Central Region IAIU	54	52	63	57	59	41	58	54	50	75	67	42	55	56	13
Metro Region IAIU	32	46	65	48	45	61	54	68	51	69	48	34	25	50	-9
Northern Region IAIU	45	62	76	70	52	65	58	68	48	87	49	47	34	59	-13
Southern Region IAIU	72	66	68	89	79	76	71	87	76	108	80	50	63	76	13
<b>IAIU Subtotals</b>	<b>203</b>	<b>226</b>	<b>272</b>	<b>264</b>	<b>235</b>	<b>243</b>	<b>241</b>	<b>277</b>	<b>225</b>	<b>339</b>	<b>244</b>	<b>173</b>	<b>177</b>	<b>240</b>	<b>4</b>
<b>Unable to Determine<sup>1</sup></b>	<b>137</b>	<b>168</b>	<b>140</b>	<b>143</b>	<b>129</b>	<b>113</b>	<b>100</b>	<b>126</b>	<b>127</b>	<b>152</b>	<b>146</b>	<b>129</b>	<b>163</b>	<b>136</b>	<b>34</b>
<b>Other Offices</b>	<b>1</b>	<b>6</b>	<b>2</b>	<b>0</b>	<b>1</b>	<b>4</b>	<b>2</b>	<b>2</b>	<b>3</b>	<b>0</b>	<b>1</b>	<b>2</b>	<b>2</b>	<b>2</b>	<b>0</b>
<b>Grand Total</b>	<b>5,248</b>	<b>6,213</b>	<b>6,557</b>	<b>6,229</b>	<b>6,342</b>	<b>6,819</b>	<b>6,220</b>	<b>7,192</b>	<b>6,280</b>	<b>7,766</b>	<b>6,518</b>	<b>5,203</b>	<b>5,206</b>	<b>6,292</b>	<b>3</b>

<sup>1</sup>CPS Reports or CWS Referrals not assigned to an office through the Assignment Designee, but were assigned to an office for an assessment or investigation.









**Table 5: Monthly Count of CPS Reports and CWS Referrals Assigned to CP&P Local Offices**

County	Local Office	Type of Referral														Total
			Aug 2016	Sep 2016	Oct 2016	Nov 2016	Dec 2016	Jan 2017	Feb 2017	Mar 2017	Apr 2017	May 2017	Jun 2017	Jul 2017	Aug 2017	
SUSSEX	Sussex	CPS	69	79	55	70	71	71	68	85	52	70	67	52	67	876
		CWS	18	22	25	26	33	30	16	21	22	32	26	20	25	316
		<b>Total</b>	<b>87</b>	<b>101</b>	<b>80</b>	<b>96</b>	<b>104</b>	<b>101</b>	<b>84</b>	<b>106</b>	<b>74</b>	<b>102</b>	<b>93</b>	<b>72</b>	<b>92</b>	<b>1192</b>
	County Totals	CPS	69	79	55	70	71	71	68	85	52	70	67	52	67	876
		<b>Total</b>	<b>87</b>	<b>101</b>	<b>80</b>	<b>96</b>	<b>104</b>	<b>101</b>	<b>84</b>	<b>106</b>	<b>74</b>	<b>102</b>	<b>93</b>	<b>72</b>	<b>92</b>	<b>1192</b>
UNION	Union Central	CPS	55	78	84	82	83	86	75	94	80	87	84	73	72	1033
		CWS	27	26	22	28	25	38	20	31	21	21	35	30	21	345
		<b>Total</b>	<b>82</b>	<b>104</b>	<b>106</b>	<b>110</b>	<b>108</b>	<b>124</b>	<b>95</b>	<b>125</b>	<b>101</b>	<b>108</b>	<b>119</b>	<b>103</b>	<b>93</b>	<b>1378</b>
	Union East	CPS	66	74	77	78	73	98	82	94	82	97	97	55	69	1042
		CWS	23	28	35	33	31	29	25	22	30	35	27	15	15	348
		<b>Total</b>	<b>89</b>	<b>102</b>	<b>112</b>	<b>111</b>	<b>104</b>	<b>127</b>	<b>107</b>	<b>116</b>	<b>112</b>	<b>132</b>	<b>124</b>	<b>70</b>	<b>84</b>	<b>1390</b>
	Union West	CPS	49	90	78	65	62	68	67	87	86	94	57	53	51	907
		CWS	24	27	20	26	32	22	34	33	18	41	35	29	18	359
		<b>Total</b>	<b>73</b>	<b>117</b>	<b>98</b>	<b>91</b>	<b>94</b>	<b>90</b>	<b>101</b>	<b>120</b>	<b>104</b>	<b>135</b>	<b>92</b>	<b>82</b>	<b>69</b>	<b>1266</b>
	County Totals	CPS	170	242	239	225	218	252	224	275	248	278	238	181	192	2982
		CWS	74	81	77	87	88	89	79	86	69	97	97	74	54	1052
		<b>Total</b>	<b>244</b>	<b>323</b>	<b>316</b>	<b>312</b>	<b>306</b>	<b>341</b>	<b>303</b>	<b>361</b>	<b>317</b>	<b>375</b>	<b>335</b>	<b>255</b>	<b>246</b>	<b>4034</b>
WARREN	Warren	CPS	68	76	79	68	57	88	68	68	61	64	68	80	50	895
		CWS	10	21	18	16	22	20	28	27	23	21	31	29	19	285
		<b>Total</b>	<b>78</b>	<b>97</b>	<b>97</b>	<b>84</b>	<b>79</b>	<b>108</b>	<b>96</b>	<b>95</b>	<b>84</b>	<b>85</b>	<b>99</b>	<b>109</b>	<b>69</b>	<b>1180</b>
	County Totals	CPS	68	76	79	68	57	88	68	68	61	64	68	80	50	895
		<b>Total</b>	<b>78</b>	<b>97</b>	<b>97</b>	<b>84</b>	<b>79</b>	<b>108</b>	<b>96</b>	<b>95</b>	<b>84</b>	<b>85</b>	<b>99</b>	<b>109</b>	<b>69</b>	<b>1180</b>
<b>County CPS Referral Total</b>		CPS	3,653	4,328	4,571	4,328	4,448	4,794	4,413	5,003	4,489	5,407	4,531	3,569	3,598	57,132
<b>County CWS Referral Total</b>		CWS	1,254	1,485	1,572	1,494	1,529	1,665	1,464	1,784	1,436	1,868	1,596	1,330	1,266	19,743
<b>County Referral Total</b>		<b>Total</b>	<b>4,907</b>	<b>5,813</b>	<b>6,143</b>	<b>5,822</b>	<b>5,977</b>	<b>6,459</b>	<b>5,877</b>	<b>6,787</b>	<b>5,925</b>	<b>7,275</b>	<b>6,127</b>	<b>4,899</b>	<b>4,864</b>	<b>76,875</b>
Central Region IAIU	CPS	54	52	63	57	59	41	58	54	50	75	67	42	55	727	
	CWS	0	0	0	0	0	0	0	0	0	0	0	0	0	0	
	<b>Total</b>	<b>54</b>	<b>52</b>	<b>63</b>	<b>57</b>	<b>59</b>	<b>41</b>	<b>58</b>	<b>54</b>	<b>50</b>	<b>75</b>	<b>67</b>	<b>42</b>	<b>55</b>	<b>727</b>	
Metro Region IAIU	CPS	32	46	65	48	45	61	54	68	51	69	48	34	25	646	
	CWS	0	0	0	0	0	0	0	0	0	0	0	0	0	0	
	<b>Total</b>	<b>32</b>	<b>46</b>	<b>65</b>	<b>48</b>	<b>45</b>	<b>61</b>	<b>54</b>	<b>68</b>	<b>51</b>	<b>69</b>	<b>48</b>	<b>34</b>	<b>25</b>	<b>646</b>	
Northern Region IAIU	CPS	45	62	76	70	52	65	58	68	48	87	49	47	34	761	
	CWS	0	0	0	0	0	0	0	0	0	0	0	0	0	0	
	<b>Total</b>	<b>45</b>	<b>62</b>	<b>76</b>	<b>70</b>	<b>52</b>	<b>65</b>	<b>58</b>	<b>68</b>	<b>48</b>	<b>87</b>	<b>49</b>	<b>47</b>	<b>34</b>	<b>761</b>	
Southern Region IAIU	CPS	72	66	68	88	79	76	71	87	76	108	80	50	63	984	
	CWS	0	0	0	1	0	0	0	0	0	0	0	0	0	1	
	<b>Total</b>	<b>72</b>	<b>66</b>	<b>68</b>	<b>89</b>	<b>79</b>	<b>76</b>	<b>71</b>	<b>87</b>	<b>76</b>	<b>108</b>	<b>80</b>	<b>50</b>	<b>63</b>	<b>985</b>	
<b>IAIU CPS Subtotal</b>		CPS	203	226	272	263	235	243	241	277	225	339	244	173	177	3,118
<b>IAIU CWS Subtotal</b>		CWS	0	0	0	1	0	0	0	0	0	0	0	0	1	
<b>IAIU Subtotal</b>		<b>Total</b>	<b>203</b>	<b>226</b>	<b>272</b>	<b>264</b>	<b>235</b>	<b>243</b>	<b>241</b>	<b>277</b>	<b>225</b>	<b>339</b>	<b>244</b>	<b>173</b>	<b>177</b>	<b>3,119</b>
<b>County and IAIU CPS Subtotal</b>		CPS	3,856	4,554	4,843	4,591	4,683	5,037	4,654	5,280	4,714	5,746	4,775	3,742	3,775	60,250
<b>County and IAIU CWS Subtotal</b>		CWS	1,254	1,485	1,572	1,495	1,529	1,665	1,464	1,784	1,436	1,868	1,596	1,330	1,266	19,744
<b>Unable to Determine<sup>(1)</sup></b>		<b>Total</b>	<b>137</b>	<b>168</b>	<b>140</b>	<b>143</b>	<b>129</b>	<b>113</b>	<b>100</b>	<b>126</b>	<b>127</b>	<b>152</b>	<b>146</b>	<b>129</b>	<b>163</b>	<b>1,773</b>
<b>Other Offices</b>		<b>Total</b>	<b>1</b>	<b>6</b>	<b>2</b>	<b>0</b>	<b>1</b>	<b>4</b>	<b>2</b>	<b>2</b>	<b>3</b>	<b>0</b>	<b>1</b>	<b>2</b>	<b>2</b>	<b>26</b>
<b>Grand Total</b>		<b>Total</b>	<b>5,248</b>	<b>6,213</b>	<b>6,557</b>	<b>6,229</b>	<b>6,342</b>	<b>6,819</b>	<b>6,220</b>	<b>7,192</b>	<b>6,280</b>	<b>7,766</b>	<b>6,518</b>	<b>5,203</b>	<b>5,206</b>	<b>81,793</b>

<sup>(1)</sup>CPS Reports or CWS Referrals not assigned to an office through the Assignment Designee, but were assigned to an office for an assessment or investigation.