



NEW JERSEY DEPARTMENT OF  
CHILDREN AND FAMILIES

## **Child Protection and Permanency**

### **Monthly Screening and Investigation Report September 2022**

Christine Norbut Beyer, MSW  
Commissioner



## Table of Contents

Table 1: NJ State Central Registry Activity: Monthly Child Abuse and Neglect Hotline Calls, Intakes and Assignments to Child Protection & Permanency (CP&P) Offices

---

Chart 1: CP&P Annual Trends in Child Protection Services (CPS) Reports and Child Welfare Services (CWS) Referrals

---

Table 2: Assignments to CP&P Offices: CPS Reports and CWS Referrals

---

Table 3: Source of CPS Reports and CWS Referrals

---

Table 4: Monthly Count of CPS Reports and CWS Referrals Assigned to Counties

---

Table 5: Monthly Count of CPS Reports and CWS Referrals Assigned to CP&P Local Offices

---

**Table 1: NJ State Central Registry Activity: Monthly Child Abuse and Neglect Hotline Calls, Intakes and Assignments to CP&P Offices<sup>1,2,7</sup>**

2021-2022	Hotline Call Activity				Intakes Recorded in NJ SPIRIT <sup>6,8</sup>													Assignments to CP&P Offices					
	Total Calls to SCR <sup>3</sup>	Abandon Calls <sup>4</sup>	Average Time to Answer (seconds)	Resulting NJS Intakes <sup>5</sup>	CPS Reports		CWS Referrals		No Action Required (NAR)		Related Information (RI)		Information & Referral (I&R)		Information Only (IO)		Unusual Incident (UIRS)		CPS Reports		CWS Referrals		Total
					n	%	n	%	n	%	n	%	n	%	n	%	n	%	n	%	n	%	
September 2021	12,259	591	91	12,780	4,559	35.7%	564	4.4%	148	1.2%	2,794	21.9%	2,894	22.6%	1,819	14.2%	2	0.0%	4,559	89.0%	564	11.0%	5,123
October 2021	14,262	1,183	152	14,500	5,213	36.0%	631	4.4%	200	1.4%	3,287	22.7%	3,277	22.6%	1,890	13.0%	2	0.0%	5,213	89.2%	630	10.8%	5,843
November 2021	13,077	1,619	262	12,689	4,689	37.0%	539	4.2%	165	1.3%	2,817	22.2%	2,865	22.6%	1,609	12.7%	5	0.0%	4,689	89.7%	541	10.3%	5,230
December 2021	12,921	1,426	222	12,594	4,601	36.5%	558	4.4%	157	1.2%	2,746	21.8%	2,858	22.7%	1,660	13.2%	14	0.1%	4,601	89.2%	557	10.8%	5,158
January 2022	11,733	942	163	11,798	4,274	36.2%	524	4.4%	116	1.0%	2,561	21.7%	2,641	22.4%	1,672	14.2%	10	0.1%	4,274	89.1%	523	10.9%	4,797
February 2022	13,523	1,838	304	12,923	4,867	37.7%	632	4.9%	168	1.3%	2,732	21.1%	2,990	23.1%	1,524	11.8%	10	0.1%	4,867	88.5%	635	11.5%	5,502
March 2022	15,347	1,916	281	14,886	5,781	38.8%	727	4.9%	207	1.4%	2,946	19.8%	3,468	23.3%	1,750	11.8%	7	0.0%	5,780	88.8%	727	11.2%	6,507
April 2022	13,145	2,124	398	12,290	4,669	38.0%	637	5.2%	168	1.4%	2,486	20.2%	2,786	22.7%	1,537	12.5%	7	0.1%	4,669	88.0%	636	12.0%	5,305
May 2022	13,609	1,526	201	13,433	5,228	38.9%	644	4.8%	177	1.3%	2,804	20.9%	2,967	22.1%	1,604	11.9%	9	0.1%	5,228	89.0%	647	11.0%	5,875
June 2022	13,105	1,997	325	12,478	4,854	38.9%	597	4.8%	196	1.6%	2,678	21.5%	2,580	20.7%	1,569	12.6%	4	0.0%	4,854	89.0%	598	11.0%	5,452
July 2022	11,225	1,022	164	11,445	4,277	37.4%	590	5.2%	155	1.4%	2,712	23.7%	1,956	17.1%	1,749	15.3%	6	0.1%	4,277	87.9%	590	12.1%	4,867
August 2022	10,651	841	101	16,623	4,103	24.7%	589	3.5%	164	1.0%	2,465	14.8%	4,070	24.5%	5,202	31.3%	30	0.2%	4,103	87.4%	589	12.6%	4,692
<b>September 2022</b>	12,502	1,199	129	12,828	4,810	37.5%	681	5.3%	178	1.4%	2,818	22.0%	2,724	21.2%	1,614	12.6%	3	0.0%	4,810	87.6%	680	12.4%	5,490
	<b>12,874</b>	<b>1,402</b>	<b>215</b>	<b>13,174</b>	<b>4,763</b>	<b>36.2%</b>	<b>609</b>	<b>4.6%</b>	<b>169</b>	<b>1.3%</b>	<b>2,757</b>	<b>20.9%</b>	<b>2,929</b>	<b>22.2%</b>	<b>1,938</b>	<b>14.7%</b>	<b>8</b>	<b>0.1%</b>	<b>4,763</b>	<b>88.7%</b>	<b>609</b>	<b>11.3%</b>	<b>5,372</b>
<b>Overall Total</b>	<b>167,359</b>	<b>18,224</b>		<b>171,267</b>	<b>61,925</b>		<b>7,913</b>		<b>2,199</b>		<b>35,846</b>		<b>38,076</b>		<b>25,199</b>		<b>109</b>		<b>61,924</b>	<b>88.7%</b>	<b>7,917</b>	<b>11.3%</b>	<b>69,841</b>

<sup>1</sup>Comes from three distinct sources: (1) the Automatic Call Distribution (ACD) phone system; which keeps a count of the number of calls and call routing; (2) Monthly NJSpirit Intakes; which record decision making on calls received by hotline screeners, and (3)

<sup>2</sup>The number of Intakes, CPS Reports, and CWS Referrals are based on an extract from NJSpirit.

<sup>3</sup>Data extracted by the Office of Research, Evaluation, and Reporting on **November 09, 2022** includes all Intakes, CPS Reports, and CWS Referrals received from **October 01, 2022** through **October 31, 2022**.

<sup>4</sup>The number of calls received through the ACD System that were directed to a screener from any call-in phone number.

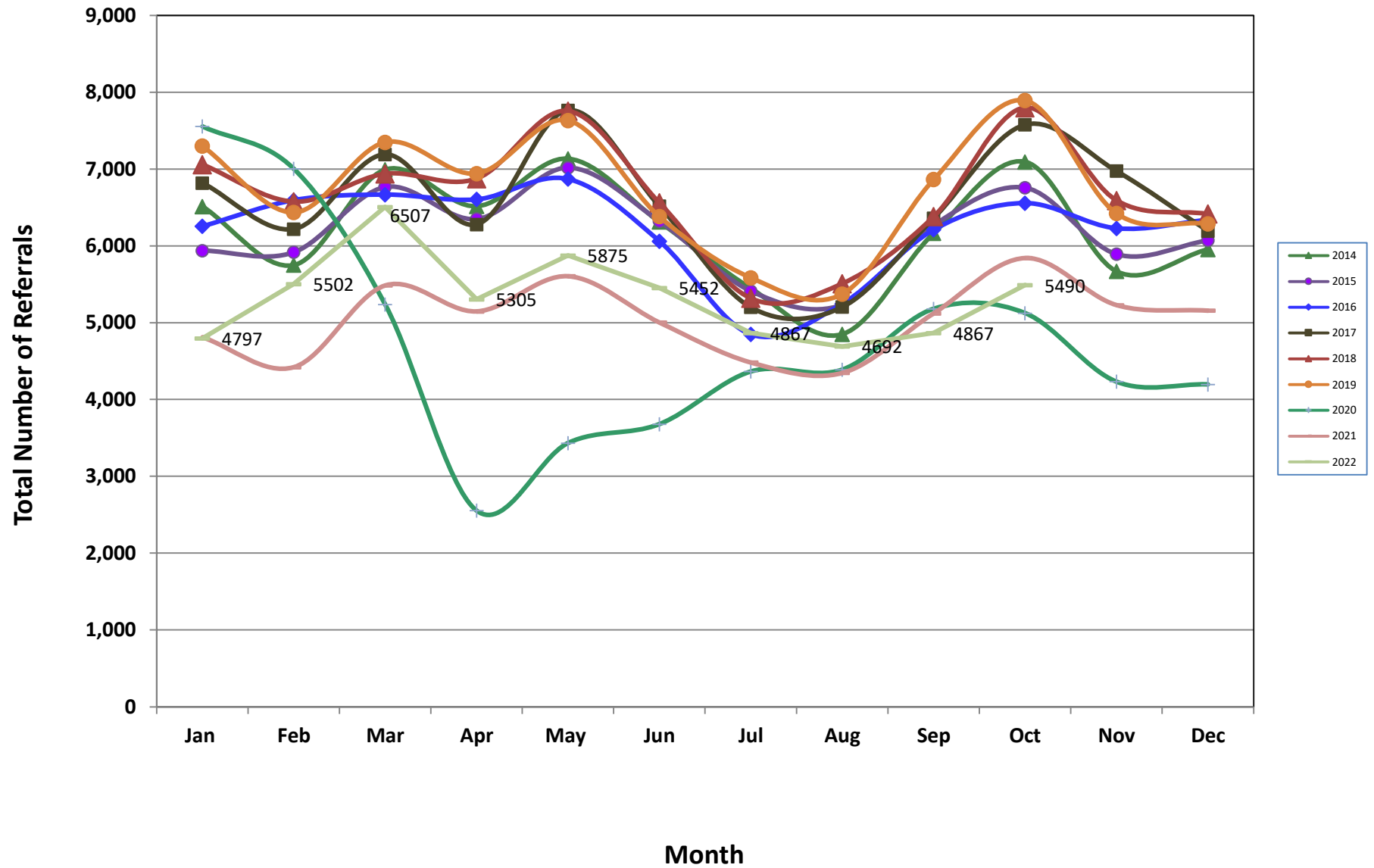
<sup>5</sup>The number of calls received through the ACD System that are abandoned either while waiting in queue or while ringing.

<sup>6</sup>The number of Intakes entered in NJSpirit from the number of calls received.

<sup>7</sup>The number of Intakes recorded in NJSpirit, by type of Intake. There is not a one-to-one relationship between an ACD call and an Intake; multiple calls to State Central Registry (SCR) may result in a single Intake, or one call may result in multiple Intakes.

<sup>8</sup>Intake: The process of documenting: a report of alleged abuse or neglect of a child (CPS); a request for services on behalf of a child, or a referral of a child for services (CWS); a call in which the caller provides additional or clarifying information about a current

### CP&P Annual Trends in CPS Reports and CWS Referrals



**Table 2: Assignments to CP&P Offices: CPS Reports and CWS Referrals<sup>1</sup>**

Intake Date <sup>3</sup>		CPS Reports <sup>2</sup>	CWS Referrals <sup>2</sup>	Total Assignments <sup>2</sup>
2017	Jan 2017	5,111	1,708	6,819
	Feb 2017	4,716	1,504	6,220
	Mar 2017	5,349	1,843	7,192
	Apr 2017	4,790	1,490	6,280
	May 2017	5,847	1,919	7,766
	Jun 2017	4,853	1,665	6,518
	Jul 2017	3,814	1,389	5,203
	Aug 2017	3,866	1,340	5,206
	<b>Sep 2017</b>	<b>4,719</b>	<b>1,643</b>	<b>6,362</b>
	Oct 2017	5,613	1,966	7,579
	Nov 2017	5,223	1,753	6,976
	Dec 2017	4,601	1,594	6,195
	<b>Total</b>	<b>58,502</b>	<b>19,814</b>	<b>78,316</b>
2018	Jan 2018	5,276	1,784	7,060
	Feb 2018	4,933	1,644	6,577
	Mar 2018	5,212	1,727	6,939
	Apr 2018	5,275	1,601	6,876
	May 2018	5,920	1,836	7,756
	Jun 2018	4,948	1,615	6,563
	Jul 2018	4,011	1,308	5,319
	Aug 2018	4,102	1,408	5,510
	<b>Sep 2018</b>	<b>4,748</b>	<b>1,634</b>	<b>6,382</b>
	Oct 2018	5,790	2,011	7,801
	Nov 2018	4,973	1,620	6,593
	Dec 2018	4,891	1,527	6,418
	<b>Total</b>	<b>60,079</b>	<b>19,715</b>	<b>79,794</b>
2019	Jan 2019	5,443	1,858	7,301
	Feb 2019	4,811	1,628	6,439
	Mar 2019	5,677	1,824	7,501
	Apr 2019	5,313	1,630	6,943
	May 2019	5,853	1,781	7,634
	Jun 2019	4,874	1,509	6,383
	Jul 2019	4,277	1,309	5,586
	Aug 2019	4,068	1,306	5,374
	<b>Sep 2019</b>	<b>5,315</b>	<b>1,551</b>	<b>6,866</b>
	Oct 2019	5,968	1,926	7,894
	Nov 2019	4,991	1,432	6,423
	Dec 2019	4,855	1,434	6,289
	<b>Total</b>	<b>61,445</b>	<b>19,188</b>	<b>80,633</b>

**Table 2: Assignments to CP&P Offices: CPS Reports and CWS Referrals<sup>1</sup>**

Intake Date <sup>3</sup>		CPS Reports <sup>2</sup>	CWS Referrals <sup>2</sup>	Total Assignments <sup>2</sup>
2020	Jan 2020	5,715	1,842	7,557
	Feb 2020	5,380	1,624	7,004
	Mar 2020	4,172	1,065	5,237
	Apr 2020	2,149	407	2,556
	May 2020	2,897	537	3,434
	Jun 2020	3,045	636	3,681
	Jul 2020	3,628	738	4,366
	Aug 2020	3,569	822	4,391
	<b>Sep 2020</b>	<b>4,153</b>	<b>1,030</b>	<b>5,183</b>
	Oct 2020	4,257	868	5,125
	Nov 2020	3,564	670	4,234
	Dec 2020	3,517	681	4,198
	<b>Total</b>	<b>46,046</b>	<b>10,920</b>	<b>56,966</b>
2021	Jan 2021	4,018	794	4,812
	Feb 2021	3,767	655	4,422
	Mar 2021	4,657	830	5,487
	Apr 2021	4,398	750	5,148
	May 2021	4,870	736	5,606
	Jun 2021	4,412	592	5,004
	Jul 2021	3,914	570	4,484
	Aug 2021	3,866	482	4,348
	<b>Sep 2021</b>	<b>4,559</b>	<b>564</b>	<b>5,123</b>
	Oct 2021	5,213	630	5,843
	Nov 2021	4,689	541	5,230
	Dec 2021	4,601	557	5,158
	<b>Total</b>	<b>52,964</b>	<b>7,701</b>	<b>60,665</b>
2022	Jan 2022	4,274	523	4,797
	Feb 2022	4,867	635	5,502
	Mar 2022	5,780	727	6,507
	Apr 2022	4,669	636	5,305
	May 2022	5,228	647	5,875
	Jun 2022	4,854	598	5,452
	Jul 2022	4,277	590	4,867
	Aug 2022	4,103	589	4,692
	<b>Sep 2022</b>	<b>4,810</b>	<b>680</b>	<b>5,490</b>
	<b>Total</b>	<b>38,588</b>	<b>5,102</b>	<b>43,690</b>
<b>Grand Total</b>		<b>317,624</b>	<b>82,440</b>	<b>400,064</b>

<sup>1</sup>Source of Data: NJ SPIRIT

<sup>2</sup>A CPS Report or a CWS Referral may include multiple children in a family, with one or more allegation or request for services. In these cases, each CPS Report or CWS Referral is counted once - the CPS Report or the CWS Referral is the unit of analysis rather than the child.

<sup>3</sup>Prior to January 2014, the number of CPS Reports and CWS Referrals was based on the type of assignment of the CPS Report or CWS Referral. Beginning in January 2014, the number of CPS Reports and CWS Referrals is based on the number of CPS Reports and CWS Referrals received.

**Table 3: Source of CPS Reports and CWS Referrals**

CPS Reports and CWS Referrals	Source	Sep 2021	Oct 2021	Nov 2021	Dec 2021	Jan 2022	Feb 2022	Mar 2022	Apr 2022	May 2022	Jun 2022	Jul 2022	Aug 2022	Sep 2022		13 Month Total	
	School Staff	863	1,450	1,303	1,252	983	1,549	1,998	1,227	1,456	929	162	91	<b>1,130</b>	<b>21%</b>	14,393	21%
	Healthcare Provider	824	780	746	706	746	750	895	728	763	786	787	777	<b>747</b>	<b>14%</b>	10,035	14%
	Law Enforcement	1,397	1,446	1,340	1,341	1,238	1,234	1,478	1,373	1,513	1,549	1,624	1,617	<b>1,421</b>	<b>26%</b>	18,571	27%
	Government Agency	266	222	205	209	212	253	261	261	233	262	276	260	<b>243</b>	<b>4%</b>	3,163	5%
	Parent	347	393	377	378	347	349	380	333	383	399	420	413	<b>421</b>	<b>8%</b>	4,940	7%
	Relative/Friend/Neighbor	372	350	289	342	337	275	298	301	344	318	380	346	<b>337</b>	<b>6%</b>	4,289	6%
	Anonymous	444	506	364	367	366	461	471	410	527	493	437	458	<b>502</b>	<b>9%</b>	5,806	8%
	CP&P	60	73	45	49	54	56	75	62	42	53	53	46	<b>57</b>	<b>1%</b>	725	1%
	Court/Legal	120	126	89	89	100	108	144	140	116	136	144	147	<b>139</b>	<b>3%</b>	1,598	2%
	Community Group/Individual	137	175	169	144	158	183	198	176	201	205	235	211	<b>180</b>	<b>3%</b>	2,372	3%
	Facility Staff (incl Correctional Facility)	51	55	47	53	54	56	55	59	62	59	59	52	<b>35</b>	<b>1%</b>	697	1%
	Child (Self)	41	42	28	30	29	29	25	25	18	28	30	34	<b>33</b>	<b>1%</b>	392	1%
	Other	189	214	217	182	160	183	209	188	194	222	241	216	<b>224</b>	<b>4%</b>	2,639	4%
	Daycare/Babysitter	12	11	11	16	13	16	20	22	23	13	19	24	<b>21</b>	<b>0%</b>	221	0%
<b>Total</b>	<b>5,123</b>	<b>5,843</b>	<b>5,230</b>	<b>5,158</b>	<b>4,797</b>	<b>5,502</b>	<b>6,507</b>	<b>5,305</b>	<b>5,875</b>	<b>5,452</b>	<b>4,867</b>	<b>4,692</b>	<b>5,490</b>		<b>69,841</b>		

**Table 4: Monthly Count of CPS Reports and CWS Referrals Assigned to Counties**

County														Average Number of Assignments Last 13 Months	Aug 22 to Sep 22 Numerical Difference
	Sep 2021	Oct 2021	Nov 2021	Dec 2021	Jan 2022	Feb 2022	Mar 2022	Apr 2022	May 2022	Jun 2022	Jul 2022	Aug 2022	Sep 2022		
Atlantic	215	255	234	215	189	245	268	222	250	233	197	217	236	229	19
Bergen	325	350	345	360	290	354	425	348	327	349	305	276	315	336	39
Burlington	263	280	264	270	264	283	359	255	300	292	284	240	305	281	65
Camden	466	511	407	419	404	449	542	458	474	422	385	415	511	451	96
Cape May	70	70	66	70	62	59	74	62	68	69	76	78	80	70	2
Cumberland	180	196	167	190	149	160	202	166	206	182	180	166	174	178	8
Essex	484	565	535	489	456	550	647	532	581	517	477	497	528	528	31
Gloucester	208	221	215	204	216	195	257	217	218	206	211	190	222	214	32
Hudson	303	371	349	321	341	392	415	324	409	327	323	242	356	344	114
Hunterdon	39	52	44	44	40	33	55	46	38	56	29	32	52	43	20
Mercer	222	245	218	230	189	229	263	217	258	229	239	232	236	231	4
Middlesex	385	472	355	408	356	464	520	388	432	404	283	308	409	399	101
Monmouth	250	331	294	294	260	288	342	297	332	286	236	266	289	290	23
Morris	173	185	189	176	193	193	213	180	216	205	165	171	190	188	19
Ocean	337	382	341	333	304	305	370	332	372	375	340	320	356	344	36
Passaic	313	402	350	330	274	354	415	347	385	350	295	264	323	339	59
Salem	75	78	56	57	65	74	84	55	81	53	62	67	70	67	3
Somerset	131	148	130	111	112	141	165	107	142	132	113	92	130	127	38
Sussex	90	99	85	72	84	100	107	95	95	95	73	69	87	89	18
Union	256	293	277	277	257	290	363	317	332	310	281	259	265	291	6
Warren	99	68	93	67	86	83	121	79	86	85	73	78	100	86	22
<b>County Subtotals</b>	<b>4,884</b>	<b>5,574</b>	<b>5,014</b>	<b>4,937</b>	<b>4,591</b>	<b>5,241</b>	<b>6,207</b>	<b>5,044</b>	<b>5,602</b>	<b>5,177</b>	<b>4,627</b>	<b>4,479</b>	<b>5,234</b>	<b>5,124</b>	<b>755</b>
Central Region IAIU	42	53	31	37	32	43	54	35	60	32	38	35	47	41	12
Metro Region IAIU	36	29	26	21	27	36	35	35	41	41	22	23	34	31	11
Northern Region IAIU	27	39	44	42	28	40	50	38	52	40	32	33	42	39	9
Southern Region IAIU	51	41	33	42	35	46	59	46	48	56	56	27	50	45	23
<b>IAIU Subtotals</b>	<b>156</b>	<b>162</b>	<b>134</b>	<b>142</b>	<b>122</b>	<b>165</b>	<b>198</b>	<b>154</b>	<b>201</b>	<b>169</b>	<b>148</b>	<b>118</b>	<b>173</b>	<b>157</b>	<b>55</b>
<sup>1</sup> Unable to Determine	83	107	82	78	84	92	102	107	72	103	90	93	80	90	-13
Other Offices	0	0	0	1	0	4	0	0	0	3	2	2	3	1	1
<b>Grand Total</b>	<b>5,123</b>	<b>5,843</b>	<b>5,230</b>	<b>5,158</b>	<b>4,797</b>	<b>5,502</b>	<b>6,507</b>	<b>5,305</b>	<b>5,875</b>	<b>5,452</b>	<b>4,867</b>	<b>4,692</b>	<b>5,490</b>	<b>5,372</b>	<b>798</b>

<sup>1</sup>CPS Reports or CWS Referrals not assigned to an office through the Assignment Designee, but were assigned to an office for an assessment or investigation.





**Table 5: Monthly Count of CPS Reports and CWS Referrals Assigned to CP&P Local Offices**

County	Local Office	Type of Referral														Total
			Sep 2021	Oct 2021	Nov 2021	Dec 2021	Jan 2022	Feb 2022	Mar 2022	Apr 2022	May 2022	Jun 2022	Jul 2022	Aug 2022	Sep 2022	
ATLANTIC	Atlantic East	CPS	106	126	118	104	114	124	128	106	116	117	88	100	106	1,453
		CWS	10	13	12	14	9	13	21	26	15	19	21	22	15	210
		<b>Total</b>	<b>116</b>	<b>139</b>	<b>130</b>	<b>118</b>	<b>123</b>	<b>137</b>	<b>149</b>	<b>132</b>	<b>131</b>	<b>136</b>	<b>109</b>	<b>122</b>	<b>121</b>	<b>1,663</b>
	Atlantic West	CPS	82	104	90	85	58	90	103	81	107	85	74	84	107	1,150
		CWS	17	12	14	12	8	18	16	9	12	12	14	11	8	163
		<b>Total</b>	<b>99</b>	<b>116</b>	<b>104</b>	<b>97</b>	<b>66</b>	<b>108</b>	<b>119</b>	<b>90</b>	<b>119</b>	<b>97</b>	<b>88</b>	<b>95</b>	<b>115</b>	<b>1,313</b>
	County Totals	CPS	188	230	208	189	172	214	231	187	223	202	162	184	213	2,603
		CWS	27	25	26	26	17	31	37	35	27	31	35	33	23	373
		<b>Total</b>	<b>215</b>	<b>255</b>	<b>234</b>	<b>215</b>	<b>189</b>	<b>245</b>	<b>268</b>	<b>222</b>	<b>250</b>	<b>233</b>	<b>197</b>	<b>217</b>	<b>236</b>	<b>2,976</b>
BERGEN	Bergen Central	CPS	132	139	133	127	111	152	169	119	119	142	108	82	117	1,650
		CWS	13	19	18	11	13	17	17	18	13	7	14	27	17	204
		<b>Total</b>	<b>145</b>	<b>158</b>	<b>151</b>	<b>138</b>	<b>124</b>	<b>169</b>	<b>186</b>	<b>137</b>	<b>132</b>	<b>149</b>	<b>122</b>	<b>109</b>	<b>134</b>	<b>1,854</b>
	Bergen South	CPS	157	177	174	197	148	170	217	188	179	176	160	142	156	2,241
		CWS	23	15	20	25	18	15	22	23	16	24	23	25	25	274
		<b>Total</b>	<b>180</b>	<b>192</b>	<b>194</b>	<b>222</b>	<b>166</b>	<b>185</b>	<b>239</b>	<b>211</b>	<b>195</b>	<b>200</b>	<b>183</b>	<b>167</b>	<b>181</b>	<b>2,515</b>
	County Totals	CPS	289	316	307	324	259	322	386	307	298	318	268	224	273	3,891
		CWS	36	34	38	36	31	32	39	41	29	31	37	52	42	478
		<b>Total</b>	<b>325</b>	<b>350</b>	<b>345</b>	<b>360</b>	<b>290</b>	<b>354</b>	<b>425</b>	<b>348</b>	<b>327</b>	<b>349</b>	<b>305</b>	<b>276</b>	<b>315</b>	<b>4,369</b>
BURLINGTON	Burlington East	CPS	103	137	115	111	119	121	162	103	134	133	115	96	130	1,579
		CWS	17	11	18	16	16	11	17	17	15	21	16	22	26	223
		<b>Total</b>	<b>120</b>	<b>148</b>	<b>133</b>	<b>127</b>	<b>135</b>	<b>132</b>	<b>179</b>	<b>120</b>	<b>149</b>	<b>154</b>	<b>131</b>	<b>118</b>	<b>156</b>	<b>1,802</b>
	Burlington West	CPS	125	115	115	128	119	127	156	118	129	123	134	106	125	1,620
		CWS	18	17	16	15	10	24	24	17	22	15	19	16	24	237
		<b>Total</b>	<b>143</b>	<b>132</b>	<b>131</b>	<b>143</b>	<b>129</b>	<b>151</b>	<b>180</b>	<b>135</b>	<b>151</b>	<b>138</b>	<b>153</b>	<b>122</b>	<b>149</b>	<b>1,857</b>
	County Totals	CPS	228	252	230	239	238	248	318	221	263	256	249	202	255	3,199
		CWS	35	28	34	31	26	35	41	34	37	36	35	38	50	460
		<b>Total</b>	<b>263</b>	<b>280</b>	<b>264</b>	<b>270</b>	<b>264</b>	<b>283</b>	<b>359</b>	<b>255</b>	<b>300</b>	<b>292</b>	<b>284</b>	<b>240</b>	<b>305</b>	<b>3,659</b>
CAMDEN	Camden Central	CPS	105	117	93	91	91	104	111	95	112	99	95	112	124	1,349
		CWS	15	17	15	14	16	16	7	9	17	21	13	20	22	202
		<b>Total</b>	<b>120</b>	<b>134</b>	<b>108</b>	<b>105</b>	<b>107</b>	<b>120</b>	<b>118</b>	<b>104</b>	<b>129</b>	<b>120</b>	<b>108</b>	<b>132</b>	<b>146</b>	<b>1,551</b>
	Camden East	CPS	101	128	94	81	84	95	106	107	94	98	84	68	111	1,251
		CWS	10	16	14	20	22	11	20	15	16	20	8	9	17	198
		<b>Total</b>	<b>111</b>	<b>144</b>	<b>108</b>	<b>101</b>	<b>106</b>	<b>106</b>	<b>126</b>	<b>122</b>	<b>110</b>	<b>118</b>	<b>92</b>	<b>77</b>	<b>128</b>	<b>1,449</b>
	Camden North	CPS	97	102	91	87	89	103	135	98	85	71	73	86	110	1,227
		CWS	17	15	5	14	9	16	22	22	21	12	18	14	12	197
		<b>Total</b>	<b>114</b>	<b>117</b>	<b>96</b>	<b>101</b>	<b>98</b>	<b>119</b>	<b>157</b>	<b>120</b>	<b>106</b>	<b>83</b>	<b>91</b>	<b>100</b>	<b>122</b>	<b>1,424</b>
	Camden South	CPS	108	96	85	94	83	95	117	101	122	88	81	92	102	1,264
		CWS	13	20	10	18	10	9	24	11	7	13	13	14	13	175
		<b>Total</b>	<b>121</b>	<b>116</b>	<b>95</b>	<b>112</b>	<b>93</b>	<b>104</b>	<b>141</b>	<b>112</b>	<b>129</b>	<b>101</b>	<b>94</b>	<b>106</b>	<b>115</b>	<b>1,439</b>
	County Totals	CPS	411	443	363	353	347	397	469	401	413	356	333	358	447	5,091
		CWS	55	68	44	66	57	52	73	57	61	66	52	57	64	772
		<b>Total</b>	<b>466</b>	<b>511</b>	<b>407</b>	<b>419</b>	<b>404</b>	<b>449</b>	<b>542</b>	<b>458</b>	<b>474</b>	<b>422</b>	<b>385</b>	<b>415</b>	<b>511</b>	<b>5,863</b>
CAPE MAY	Cape May	CPS	61	61	56	61	56	52	63	56	58	61	68	66	67	786
		CWS	9	9	10	9	6	7	11	6	10	8	8	12	13	118
		<b>Total</b>	<b>70</b>	<b>70</b>	<b>66</b>	<b>70</b>	<b>62</b>	<b>59</b>	<b>74</b>	<b>62</b>	<b>68</b>	<b>69</b>	<b>76</b>	<b>78</b>	<b>80</b>	<b>904</b>
	County Totals	CPS	61	61	56	61	56	52	63	56	58	61	68	66	67	786
		CWS	9	9	10	9	6	7	11	6	10	8	8	12	13	118
		<b>Total</b>	<b>70</b>	<b>70</b>	<b>66</b>	<b>70</b>	<b>62</b>	<b>59</b>	<b>74</b>	<b>62</b>	<b>68</b>	<b>69</b>	<b>76</b>	<b>78</b>	<b>80</b>	<b>904</b>
CUMBERLAND	Cumberland East	CPS	77	75	59	71	56	54	74	59	65	65	62	66	56	839
		CWS	8	11	6	8	11	14	10	4	12	11	10	12	13	130
		<b>Total</b>	<b>85</b>	<b>86</b>	<b>65</b>	<b>79</b>	<b>67</b>	<b>68</b>	<b>84</b>	<b>63</b>	<b>77</b>	<b>76</b>	<b>72</b>	<b>78</b>	<b>69</b>	<b>969</b>
	Cumberland West	CPS	89	102	94	96	67	81	109	90	115	94	92	78	93	1,200
		CWS	6	8	8	15	15	11	9	13	14	12	16	10	12	149
		<b>Total</b>	<b>95</b>	<b>110</b>	<b>102</b>	<b>111</b>	<b>82</b>	<b>92</b>	<b>118</b>	<b>103</b>	<b>129</b>	<b>106</b>	<b>108</b>	<b>88</b>	<b>105</b>	<b>1,349</b>
	County Totals	CPS	166	177	153	167	123	135	183	149	180	159	154	144	149	2,039
		CWS	14	19	14	23	26	25	19	17	26	23	26	22	25	279
		<b>Total</b>	<b>180</b>	<b>196</b>	<b>167</b>	<b>190</b>	<b>149</b>	<b>160</b>	<b>202</b>	<b>166</b>	<b>206</b>	<b>182</b>	<b>180</b>	<b>166</b>	<b>174</b>	<b>2,318</b>

Data in this report is preliminary and may differ from any final report. This report is produced to ensure continuous quality improvement throughout DCF.



**Table 5: Monthly Count of CPS Reports and CWS Referrals Assigned to CP&P Local Offices**

County	Local Office	Type of Referral	Sep 2021	Oct 2021	Nov 2021	Dec 2021	Jan 2022	Feb 2022	Mar 2022	Apr 2022	May 2022	Jun 2022	Jul 2022	Aug 2022	Sep 2022	Total
ESSEX	Essex Central	CPS	75	88	78	68	57	69	78	89	83	77	73	79	85	999
		CWS	6	14	7	12	6	13	10	14	10	9	8	9	10	128
		<b>Total</b>	<b>81</b>	<b>102</b>	<b>85</b>	<b>80</b>	<b>63</b>	<b>82</b>	<b>88</b>	<b>103</b>	<b>93</b>	<b>86</b>	<b>81</b>	<b>88</b>	<b>95</b>	<b>1,127</b>
	Essex North	CPS	50	78	85	109	81	88	115	82	91	90	71	60	86	1,086
		CWS	3	9	12	8	13	10	6	7	11	6	13	5	8	111
		<b>Total</b>	<b>53</b>	<b>87</b>	<b>97</b>	<b>117</b>	<b>94</b>	<b>98</b>	<b>121</b>	<b>89</b>	<b>102</b>	<b>96</b>	<b>84</b>	<b>65</b>	<b>94</b>	<b>1,197</b>
	Essex South	CPS	76	104	84	62	65	89	123	82	106	86	77	83	66	1,103
		CWS	13	14	11	15	8	11	15	10	17	9	12	9	11	155
		<b>Total</b>	<b>89</b>	<b>118</b>	<b>95</b>	<b>77</b>	<b>73</b>	<b>100</b>	<b>138</b>	<b>92</b>	<b>123</b>	<b>95</b>	<b>89</b>	<b>92</b>	<b>77</b>	<b>1258</b>
	Newark Center City	CPS	75	86	64	75	79	71	90	75	88	67	65	73	74	982
		CWS	12	6	11	13	2	8	9	9	9	10	9	10	8	116
		<b>Total</b>	<b>87</b>	<b>92</b>	<b>75</b>	<b>88</b>	<b>81</b>	<b>79</b>	<b>99</b>	<b>84</b>	<b>97</b>	<b>77</b>	<b>74</b>	<b>83</b>	<b>82</b>	<b>1098</b>
	Newark Northeast	CPS	71	75	80	50	68	91	94	83	72	63	61	74	79	961
		CWS	9	14	6	5	8	13	14	5	6	7	10	11	14	122
		<b>Total</b>	<b>80</b>	<b>89</b>	<b>86</b>	<b>55</b>	<b>76</b>	<b>104</b>	<b>108</b>	<b>88</b>	<b>78</b>	<b>70</b>	<b>71</b>	<b>85</b>	<b>93</b>	<b>1083</b>
	Newark South	CPS	83	72	85	65	55	79	88	65	76	80	68	75	73	964
		CWS	11	5	12	7	14	8	5	11	12	13	10	9	14	131
		<b>Total</b>	<b>94</b>	<b>77</b>	<b>97</b>	<b>72</b>	<b>69</b>	<b>87</b>	<b>93</b>	<b>76</b>	<b>88</b>	<b>93</b>	<b>78</b>	<b>84</b>	<b>87</b>	<b>1095</b>
County Totals	CPS	430	503	476	429	405	487	588	476	516	463	415	444	463	6095	
	CWS	54	62	59	60	51	63	59	56	65	54	62	53	65	763	
	<b>Total</b>	<b>484</b>	<b>565</b>	<b>535</b>	<b>489</b>	<b>456</b>	<b>550</b>	<b>647</b>	<b>532</b>	<b>581</b>	<b>517</b>	<b>477</b>	<b>497</b>	<b>528</b>	<b>6858</b>	
GLOUCESTER	Gloucester East	CPS	80	97	88	90	86	84	107	79	88	81	90	78	74	1122
		CWS	19	13	13	7	14	12	16	18	9	13	13	11	15	173
		<b>Total</b>	<b>99</b>	<b>110</b>	<b>101</b>	<b>97</b>	<b>100</b>	<b>96</b>	<b>123</b>	<b>97</b>	<b>97</b>	<b>94</b>	<b>103</b>	<b>89</b>	<b>89</b>	<b>1295</b>
	Gloucester West	CPS	97	93	95	92	103	91	123	103	109	98	101	85	110	1300
		CWS	12	18	19	15	13	8	11	17	12	14	7	16	23	185
		<b>Total</b>	<b>109</b>	<b>111</b>	<b>114</b>	<b>107</b>	<b>116</b>	<b>99</b>	<b>134</b>	<b>120</b>	<b>121</b>	<b>112</b>	<b>108</b>	<b>101</b>	<b>133</b>	<b>1485</b>
	County Totals	CPS	177	190	183	182	189	175	230	182	197	179	191	163	184	2422
		CWS	31	31	32	22	27	20	27	35	21	27	20	27	38	358
		<b>Total</b>	<b>208</b>	<b>221</b>	<b>215</b>	<b>204</b>	<b>216</b>	<b>195</b>	<b>257</b>	<b>217</b>	<b>218</b>	<b>206</b>	<b>211</b>	<b>190</b>	<b>222</b>	<b>2780</b>
HUDSON	Hudson Central	CPS	78	111	80	70	78	93	99	74	131	82	90	75	93	1154
		CWS	15	13	18	15	9	18	17	11	10	14	10	9	11	170
		<b>Total</b>	<b>93</b>	<b>124</b>	<b>98</b>	<b>85</b>	<b>87</b>	<b>111</b>	<b>116</b>	<b>85</b>	<b>141</b>	<b>96</b>	<b>100</b>	<b>84</b>	<b>104</b>	<b>1324</b>
	Hudson North	CPS	59	68	80	81	90	98	108	65	74	70	69	48	86	996
		CWS	11	9	6	8	5	12	10	10	10	6	9	6	15	117
		<b>Total</b>	<b>70</b>	<b>77</b>	<b>86</b>	<b>89</b>	<b>95</b>	<b>110</b>	<b>118</b>	<b>75</b>	<b>84</b>	<b>76</b>	<b>78</b>	<b>54</b>	<b>101</b>	<b>1113</b>
	Hudson South	CPS	51	54	68	59	62	69	74	63	80	74	61	40	70	825
		CWS	9	12	4	5	12	8	4	10	14	8	10	8	7	111
		<b>Total</b>	<b>60</b>	<b>66</b>	<b>72</b>	<b>64</b>	<b>74</b>	<b>77</b>	<b>78</b>	<b>73</b>	<b>94</b>	<b>82</b>	<b>71</b>	<b>48</b>	<b>77</b>	<b>936</b>
	Hudson West	CPS	72	93	87	77	76	87	90	84	84	66	67	47	65	995
		CWS	8	11	6	6	9	7	13	7	6	7	7	9	9	105
		<b>Total</b>	<b>80</b>	<b>104</b>	<b>93</b>	<b>83</b>	<b>85</b>	<b>94</b>	<b>103</b>	<b>91</b>	<b>90</b>	<b>73</b>	<b>74</b>	<b>56</b>	<b>74</b>	<b>1100</b>
	County Totals	CPS	260	326	315	287	306	347	371	286	369	292	287	210	314	3970
		CWS	43	45	34	34	35	45	44	38	40	35	36	32	42	503
		<b>Total</b>	<b>303</b>	<b>371</b>	<b>349</b>	<b>321</b>	<b>341</b>	<b>392</b>	<b>415</b>	<b>324</b>	<b>409</b>	<b>327</b>	<b>323</b>	<b>242</b>	<b>356</b>	<b>4473</b>
HUNTERDON	Hunterdon	CPS	35	49	42	42	36	30	50	39	34	50	25	27	49	508
		CWS	4	3	2	2	4	3	5	7	4	6	4	5	3	52
		<b>Total</b>	<b>39</b>	<b>52</b>	<b>44</b>	<b>44</b>	<b>40</b>	<b>33</b>	<b>55</b>	<b>46</b>	<b>38</b>	<b>56</b>	<b>29</b>	<b>32</b>	<b>52</b>	<b>560</b>
	County Totals	CPS	35	49	42	42	36	30	50	39	34	50	25	27	49	508
		CWS	4	3	2	2	4	3	5	7	4	6	4	5	3	52
<b>Total</b>	<b>39</b>	<b>52</b>	<b>44</b>	<b>44</b>	<b>40</b>	<b>33</b>	<b>55</b>	<b>46</b>	<b>38</b>	<b>56</b>	<b>29</b>	<b>32</b>	<b>52</b>	<b>560</b>		
MERCER	Mercer North	CPS	103	85	97	95	87	99	129	91	131	111	103	103	122	1356
		CWS	13	18	12	12	13	16	14	18	12	15	19	14	10	186
		<b>Total</b>	<b>116</b>	<b>103</b>	<b>109</b>	<b>107</b>	<b>100</b>	<b>115</b>	<b>143</b>	<b>109</b>	<b>143</b>	<b>126</b>	<b>122</b>	<b>117</b>	<b>132</b>	<b>1542</b>
	Mercer South	CPS	91	128	101	108	76	107	106	100	96	93	104	99	90	1299
		CWS	15	14	8	15	13	7	14	8	19	10	13	16	14	166
		<b>Total</b>	<b>106</b>	<b>142</b>	<b>109</b>	<b>123</b>	<b>89</b>	<b>114</b>	<b>120</b>	<b>108</b>	<b>115</b>	<b>103</b>	<b>117</b>	<b>115</b>	<b>104</b>	<b>1465</b>
	County Totals	CPS	194	213	198	203	163	206	235	191	227	204	207	202	212	2655
CWS		28	32	20	27	26	23	28	26	31	25	32	30	24	352	
<b>Total</b>	<b>222</b>	<b>245</b>	<b>218</b>	<b>230</b>	<b>189</b>	<b>229</b>	<b>263</b>	<b>217</b>	<b>258</b>	<b>229</b>	<b>239</b>	<b>232</b>	<b>236</b>	<b>3007</b>		

Data in this report is preliminary and may differ from any final report. This report is produced to ensure continuous quality improvement throughout DCF.



**Table 5: Monthly Count of CPS Reports and CWS Referrals Assigned to CP&P Local Offices**

County	Local Office	Type of Referral														Total
			Sep 2021	Oct 2021	Nov 2021	Dec 2021	Jan 2022	Feb 2022	Mar 2022	Apr 2022	May 2022	Jun 2022	Jul 2022	Aug 2022	Sep 2022	
MIDDLESEX	Middlesex Central	CPS	91	118	101	114	114	125	129	126	107	117	64	79	100	1385
		CWS	12	17	9	10	5	19	18	12	14	12	7	2	17	154
		<b>Total</b>	<b>103</b>	<b>135</b>	<b>110</b>	<b>124</b>	<b>119</b>	<b>144</b>	<b>147</b>	<b>138</b>	<b>121</b>	<b>129</b>	<b>71</b>	<b>81</b>	<b>117</b>	<b>1539</b>
	Middlesex Coastal	CPS	132	149	120	120	113	138	173	124	137	127	106	116	137	1692
		CWS	9	12	9	12	6	10	8	12	13	13	14	12	19	149
		<b>Total</b>	<b>141</b>	<b>161</b>	<b>129</b>	<b>132</b>	<b>119</b>	<b>148</b>	<b>181</b>	<b>136</b>	<b>150</b>	<b>140</b>	<b>120</b>	<b>128</b>	<b>156</b>	<b>1841</b>
	Middlesex West	CPS	127	162	106	146	109	153	171	100	147	121	83	89	114	1628
		CWS	14	14	10	6	9	19	21	14	14	14	9	10	22	176
		<b>Total</b>	<b>141</b>	<b>176</b>	<b>116</b>	<b>152</b>	<b>118</b>	<b>172</b>	<b>192</b>	<b>114</b>	<b>161</b>	<b>135</b>	<b>92</b>	<b>99</b>	<b>136</b>	<b>1804</b>
	County Totals	CPS	350	429	327	380	336	416	473	350	391	365	253	284	351	4705
CWS		35	43	28	28	20	48	47	38	41	39	30	24	58	479	
<b>Total</b>		<b>385</b>	<b>472</b>	<b>355</b>	<b>408</b>	<b>356</b>	<b>464</b>	<b>520</b>	<b>388</b>	<b>432</b>	<b>404</b>	<b>283</b>	<b>308</b>	<b>409</b>	<b>5184</b>	
MONMOUTH	Monmouth North	CPS	123	186	132	158	132	145	186	157	172	134	123	123	142	1913
		CWS	11	14	17	17	11	12	14	16	22	5	13	23	11	186
		<b>Total</b>	<b>134</b>	<b>200</b>	<b>149</b>	<b>175</b>	<b>143</b>	<b>157</b>	<b>200</b>	<b>173</b>	<b>194</b>	<b>139</b>	<b>136</b>	<b>146</b>	<b>153</b>	<b>2099</b>
	Monmouth South	CPS	109	120	134	108	100	114	130	110	126	136	88	110	112	1497
		CWS	7	11	11	11	17	17	12	14	12	11	12	10	24	169
		<b>Total</b>	<b>116</b>	<b>131</b>	<b>145</b>	<b>119</b>	<b>117</b>	<b>131</b>	<b>142</b>	<b>124</b>	<b>138</b>	<b>147</b>	<b>100</b>	<b>120</b>	<b>136</b>	<b>1666</b>
	County Totals	CPS	232	306	266	266	232	259	316	267	298	270	211	233	254	3410
		CWS	18	25	28	28	28	29	26	30	34	16	25	33	35	355
		<b>Total</b>	<b>250</b>	<b>331</b>	<b>294</b>	<b>294</b>	<b>260</b>	<b>288</b>	<b>342</b>	<b>297</b>	<b>332</b>	<b>286</b>	<b>236</b>	<b>266</b>	<b>289</b>	<b>3765</b>
MORRIS	Morris East	CPS	67	74	82	73	75	101	89	72	85	85	67	70	82	1022
		CWS	8	6	7	12	11	5	8	11	7	12	9	7	5	108
		<b>Total</b>	<b>75</b>	<b>80</b>	<b>89</b>	<b>85</b>	<b>86</b>	<b>106</b>	<b>97</b>	<b>83</b>	<b>92</b>	<b>97</b>	<b>76</b>	<b>77</b>	<b>87</b>	<b>1130</b>
	Morris West	CPS	89	95	90	84	99	78	101	82	112	99	82	84	95	1190
		CWS	9	10	10	7	8	9	15	15	12	9	7	10	8	129
		<b>Total</b>	<b>98</b>	<b>105</b>	<b>100</b>	<b>91</b>	<b>107</b>	<b>87</b>	<b>116</b>	<b>97</b>	<b>124</b>	<b>108</b>	<b>89</b>	<b>94</b>	<b>103</b>	<b>1319</b>
	County Totals	CPS	156	169	172	157	174	179	190	154	197	184	149	154	177	2212
		CWS	17	16	17	19	19	14	23	26	19	21	16	17	13	237
		<b>Total</b>	<b>173</b>	<b>185</b>	<b>189</b>	<b>176</b>	<b>193</b>	<b>193</b>	<b>213</b>	<b>180</b>	<b>216</b>	<b>205</b>	<b>165</b>	<b>171</b>	<b>190</b>	<b>2449</b>
OCEAN	Ocean North	CPS	162	178	172	159	154	151	158	171	172	172	161	139	163	2112
		CWS	11	15	13	14	18	22	24	16	23	18	13	18	17	222
		<b>Total</b>	<b>173</b>	<b>193</b>	<b>185</b>	<b>173</b>	<b>172</b>	<b>173</b>	<b>182</b>	<b>187</b>	<b>195</b>	<b>190</b>	<b>174</b>	<b>157</b>	<b>180</b>	<b>2334</b>
	Ocean South	CPS	149	170	144	145	123	116	168	128	153	173	145	147	163	1924
		CWS	15	19	12	15	9	16	20	17	24	12	21	16	13	209
		<b>Total</b>	<b>164</b>	<b>189</b>	<b>156</b>	<b>160</b>	<b>132</b>	<b>132</b>	<b>188</b>	<b>145</b>	<b>177</b>	<b>185</b>	<b>166</b>	<b>163</b>	<b>176</b>	<b>2133</b>
	County Totals	CPS	311	348	316	304	277	267	326	299	325	345	306	286	326	4036
CWS		26	34	25	29	27	38	44	33	47	30	34	34	30	431	
<b>Total</b>		<b>337</b>	<b>382</b>	<b>341</b>	<b>333</b>	<b>304</b>	<b>305</b>	<b>370</b>	<b>332</b>	<b>372</b>	<b>375</b>	<b>340</b>	<b>320</b>	<b>356</b>	<b>4467</b>	
PASSAIC	Passaic Central	CPS	143	169	160	155	144	165	187	140	177	164	127	115	157	2003
		CWS	20	22	18	14	15	29	24	25	18	14	5	10	21	235
		<b>Total</b>	<b>163</b>	<b>191</b>	<b>178</b>	<b>169</b>	<b>159</b>	<b>194</b>	<b>211</b>	<b>165</b>	<b>195</b>	<b>178</b>	<b>132</b>	<b>125</b>	<b>178</b>	<b>2238</b>
	Passaic North	CPS	135	193	157	152	104	136	182	154	166	157	143	124	126	1929
		CWS	15	18	15	9	11	24	22	28	24	15	20	15	19	235
		<b>Total</b>	<b>150</b>	<b>211</b>	<b>172</b>	<b>161</b>	<b>115</b>	<b>160</b>	<b>204</b>	<b>182</b>	<b>190</b>	<b>172</b>	<b>163</b>	<b>139</b>	<b>145</b>	<b>2164</b>
	County Totals	CPS	278	362	317	307	248	301	369	294	343	321	270	239	283	3932
		CWS	35	40	33	23	26	53	46	53	42	29	25	25	40	470
		<b>Total</b>	<b>313</b>	<b>402</b>	<b>350</b>	<b>330</b>	<b>274</b>	<b>354</b>	<b>415</b>	<b>347</b>	<b>385</b>	<b>350</b>	<b>295</b>	<b>264</b>	<b>323</b>	<b>4402</b>
SALEM	Salem	CPS	66	71	50	49	58	59	70	48	72	46	51	62	61	763
		CWS	9	7	6	8	7	15	14	7	9	7	11	5	9	114
		<b>Total</b>	<b>75</b>	<b>78</b>	<b>56</b>	<b>57</b>	<b>65</b>	<b>74</b>	<b>84</b>	<b>55</b>	<b>81</b>	<b>53</b>	<b>62</b>	<b>67</b>	<b>70</b>	<b>877</b>
	County Totals	CPS	66	71	50	49	58	59	70	48	72	46	51	62	61	763
		CWS	9	7	6	8	7	15	14	7	9	7	11	5	9	114
<b>Total</b>	<b>75</b>	<b>78</b>	<b>56</b>	<b>57</b>	<b>65</b>	<b>74</b>	<b>84</b>	<b>55</b>	<b>81</b>	<b>53</b>	<b>62</b>	<b>67</b>	<b>70</b>	<b>877</b>		
SOMERSET	Somerset	CPS	128	133	125	101	103	132	149	103	132	119	102	81	116	1524
		CWS	3	15	5	10	9	9	16	4	10	13	11	11	14	130
		<b>Total</b>	<b>131</b>	<b>148</b>	<b>130</b>	<b>111</b>	<b>112</b>	<b>141</b>	<b>165</b>	<b>107</b>	<b>142</b>	<b>132</b>	<b>113</b>	<b>92</b>	<b>130</b>	<b>1654</b>
	County Totals	CPS	128	133	125	101	103	132	149	103	132	119	102	81	116	1524
		CWS	3	15	5	10	9	9	16	4	10	13	11	11	14	130
<b>Total</b>	<b>131</b>	<b>148</b>	<b>130</b>	<b>111</b>	<b>112</b>	<b>141</b>	<b>165</b>	<b>107</b>	<b>142</b>	<b>132</b>	<b>113</b>	<b>92</b>	<b>130</b>	<b>1654</b>		

Data in this report is preliminary and may differ from any final report. This report is produced to ensure continuous quality improvement throughout DCF.



**Table 5: Monthly Count of CPS Reports and CWS Referrals Assigned to CP&P Local Offices**

County	Local Office	Type of Referral														Total
			Sep 2021	Oct 2021	Nov 2021	Dec 2021	Jan 2022	Feb 2022	Mar 2022	Apr 2022	May 2022	Jun 2022	Jul 2022	Aug 2022	Sep 2022	
SUSSEX	Sussex	CPS	82	86	71	67	77	89	98	84	85	77	65	64	78	1023
		CWS	8	13	14	5	7	11	9	11	10	18	8	5	9	128
		<b>Total</b>	<b>90</b>	<b>99</b>	<b>85</b>	<b>72</b>	<b>84</b>	<b>100</b>	<b>107</b>	<b>95</b>	<b>95</b>	<b>95</b>	<b>73</b>	<b>69</b>	<b>87</b>	<b>1151</b>
	County Totals	CPS	82	86	71	67	77	89	98	84	85	77	65	64	78	1023
		CWS	8	13	14	5	7	11	9	11	10	18	8	5	9	128
		<b>Total</b>	<b>90</b>	<b>99</b>	<b>85</b>	<b>72</b>	<b>84</b>	<b>100</b>	<b>107</b>	<b>95</b>	<b>95</b>	<b>95</b>	<b>73</b>	<b>69</b>	<b>87</b>	<b>1151</b>
UNION	Union Central	CPS	72	87	64	82	56	78	95	90	88	97	88	74	72	1043
		CWS	8	3	11	5	10	8	16	4	15	10	10	9	8	117
		<b>Total</b>	<b>80</b>	<b>90</b>	<b>75</b>	<b>87</b>	<b>66</b>	<b>86</b>	<b>111</b>	<b>94</b>	<b>103</b>	<b>107</b>	<b>98</b>	<b>83</b>	<b>80</b>	<b>1160</b>
	Union East	CPS	66	93	88	87	108	75	104	98	96	88	90	78	69	1140
		CWS	11	9	9	15	8	9	14	10	13	19	11	13	14	155
		<b>Total</b>	<b>77</b>	<b>102</b>	<b>97</b>	<b>102</b>	<b>116</b>	<b>84</b>	<b>118</b>	<b>108</b>	<b>109</b>	<b>107</b>	<b>101</b>	<b>91</b>	<b>83</b>	<b>1295</b>
	Union West	CPS	89	93	95	79	67	108	115	98	105	89	71	76	87	1172
		CWS	10	8	10	9	8	12	19	17	15	7	11	9	15	150
		<b>Total</b>	<b>99</b>	<b>101</b>	<b>105</b>	<b>88</b>	<b>75</b>	<b>120</b>	<b>134</b>	<b>115</b>	<b>120</b>	<b>96</b>	<b>82</b>	<b>85</b>	<b>102</b>	<b>1322</b>
	County Totals	CPS	227	273	247	248	231	261	314	286	289	274	249	228	228	3355
		CWS	29	20	30	29	26	29	49	31	43	36	32	31	37	422
		<b>Total</b>	<b>256</b>	<b>293</b>	<b>277</b>	<b>277</b>	<b>257</b>	<b>290</b>	<b>363</b>	<b>317</b>	<b>332</b>	<b>310</b>	<b>281</b>	<b>259</b>	<b>265</b>	<b>3777</b>
	WARREN	Warren	CPS	91	64	86	62	77	77	103	71	77	78	70	68	88
CWS			8	4	7	5	9	6	18	8	9	7	3	10	12	106
<b>Total</b>			<b>99</b>	<b>68</b>	<b>93</b>	<b>67</b>	<b>86</b>	<b>83</b>	<b>121</b>	<b>79</b>	<b>86</b>	<b>85</b>	<b>73</b>	<b>78</b>	<b>100</b>	<b>1118</b>
County Totals		CPS	91	64	86	62	77	77	103	71	77	78	70	68	88	1012
		CWS	8	4	7	5	9	6	18	8	9	7	3	10	12	106
		<b>Total</b>	<b>99</b>	<b>68</b>	<b>93</b>	<b>67</b>	<b>86</b>	<b>83</b>	<b>121</b>	<b>79</b>	<b>86</b>	<b>85</b>	<b>73</b>	<b>78</b>	<b>100</b>	<b>1118</b>
<b>County CPS Referral Total</b>		<b>CPS</b>	<b>4,360</b>	<b>5,001</b>	<b>4,508</b>	<b>4,417</b>	<b>4,107</b>	<b>4,653</b>	<b>5,532</b>	<b>4,451</b>	<b>4,987</b>	<b>4,619</b>	<b>4,085</b>	<b>3,923</b>	<b>4,588</b>	<b>59,231</b>
<b>County CWS Referral Total</b>		<b>CWS</b>	<b>524</b>	<b>573</b>	<b>506</b>	<b>520</b>	<b>484</b>	<b>588</b>	<b>675</b>	<b>593</b>	<b>615</b>	<b>558</b>	<b>542</b>	<b>556</b>	<b>646</b>	<b>7,380</b>
<b>County Referral Total</b>		<b>Total</b>	<b>4,884</b>	<b>5,574</b>	<b>5,014</b>	<b>4,937</b>	<b>4,591</b>	<b>5,241</b>	<b>6,207</b>	<b>5,044</b>	<b>5,602</b>	<b>5,177</b>	<b>4,627</b>	<b>4,479</b>	<b>5,234</b>	<b>66,611</b>
Central Region IAIU	CPS	42	53	31	37	32	43	54	35	60	32	38	35	47	539	
	CWS	0	0	0	0	0	0	0	0	0	0	0	0	0	0	
	<b>Total</b>	<b>42</b>	<b>53</b>	<b>31</b>	<b>37</b>	<b>32</b>	<b>43</b>	<b>54</b>	<b>35</b>	<b>60</b>	<b>32</b>	<b>38</b>	<b>35</b>	<b>47</b>	<b>539</b>	
Metro Region IAIU	CPS	36	28	26	21	27	36	35	35	41	41	22	23	34	405	
	CWS	0	1	0	0	0	0	0	0	0	0	0	0	0	1	
	<b>Total</b>	<b>36</b>	<b>29</b>	<b>26</b>	<b>21</b>	<b>27</b>	<b>36</b>	<b>35</b>	<b>35</b>	<b>41</b>	<b>41</b>	<b>22</b>	<b>23</b>	<b>34</b>	<b>406</b>	
Northern Region IAIU	CPS	27	39	44	41	28	40	50	38	52	40	32	33	42	506	
	CWS	0	0	0	1	0	0	0	0	0	0	0	0	0	1	
	<b>Total</b>	<b>27</b>	<b>39</b>	<b>44</b>	<b>42</b>	<b>28</b>	<b>40</b>	<b>50</b>	<b>38</b>	<b>52</b>	<b>40</b>	<b>32</b>	<b>33</b>	<b>42</b>	<b>507</b>	
Southern Region IAIU	CPS	51	41	33	42	35	46	59	46	48	56	56	27	50	590	
	CWS	0	0	0	0	0	0	0	0	0	0	0	0	0	0	
	<b>Total</b>	<b>51</b>	<b>41</b>	<b>33</b>	<b>42</b>	<b>35</b>	<b>46</b>	<b>59</b>	<b>46</b>	<b>48</b>	<b>56</b>	<b>56</b>	<b>27</b>	<b>50</b>	<b>590</b>	
<b>IAIU CPS Subtotal</b>		<b>CPS</b>	<b>156</b>	<b>161</b>	<b>134</b>	<b>141</b>	<b>122</b>	<b>165</b>	<b>198</b>	<b>154</b>	<b>201</b>	<b>169</b>	<b>148</b>	<b>118</b>	<b>173</b>	<b>2,040</b>
<b>IAIU CWS Subtotal</b>		<b>CWS</b>	<b>0</b>	<b>1</b>	<b>0</b>	<b>1</b>	<b>0</b>	<b>0</b>	<b>0</b>	<b>0</b>	<b>0</b>	<b>0</b>	<b>0</b>	<b>0</b>	<b>0</b>	<b>2</b>
<b>IAIU Subtotal</b>		<b>Total</b>	<b>156</b>	<b>162</b>	<b>134</b>	<b>142</b>	<b>122</b>	<b>165</b>	<b>198</b>	<b>154</b>	<b>201</b>	<b>169</b>	<b>148</b>	<b>118</b>	<b>173</b>	<b>2,042</b>
<b>County and IAIU CPS Subtotal</b>		<b>CPS</b>	<b>4,516</b>	<b>5,162</b>	<b>4,642</b>	<b>4,558</b>	<b>4,229</b>	<b>4,818</b>	<b>5,730</b>	<b>4,605</b>	<b>5,188</b>	<b>4,788</b>	<b>4,233</b>	<b>4,041</b>	<b>4,761</b>	<b>61,271</b>
<b>County and IAIU CWS Subtotal</b>		<b>CWS</b>	<b>524</b>	<b>574</b>	<b>506</b>	<b>521</b>	<b>484</b>	<b>588</b>	<b>675</b>	<b>593</b>	<b>615</b>	<b>558</b>	<b>542</b>	<b>556</b>	<b>646</b>	<b>7,382</b>
<b>Unable to Determine(1)</b>		<b>Total</b>	<b>83</b>	<b>107</b>	<b>82</b>	<b>78</b>	<b>84</b>	<b>92</b>	<b>102</b>	<b>107</b>	<b>72</b>	<b>103</b>	<b>90</b>	<b>93</b>	<b>80</b>	<b>1,173</b>
<b>Other Offices</b>		<b>Total</b>	<b>0</b>	<b>0</b>	<b>0</b>	<b>1</b>	<b>0</b>	<b>4</b>	<b>0</b>	<b>0</b>	<b>0</b>	<b>3</b>	<b>2</b>	<b>2</b>	<b>3</b>	<b>15</b>
<b>Grand Total</b>		<b>Total</b>	<b>5,123</b>	<b>5,843</b>	<b>5,230</b>	<b>5,158</b>	<b>4,797</b>	<b>5,502</b>	<b>6,507</b>	<b>5,305</b>	<b>5,875</b>	<b>5,452</b>	<b>4,867</b>	<b>4,692</b>	<b>5,490</b>	<b>69,841</b>

(1) CPS Reports or CWS Referrals not assigned to an office through the Assignment Designee, but were assigned to an office for an assessment or investigation.