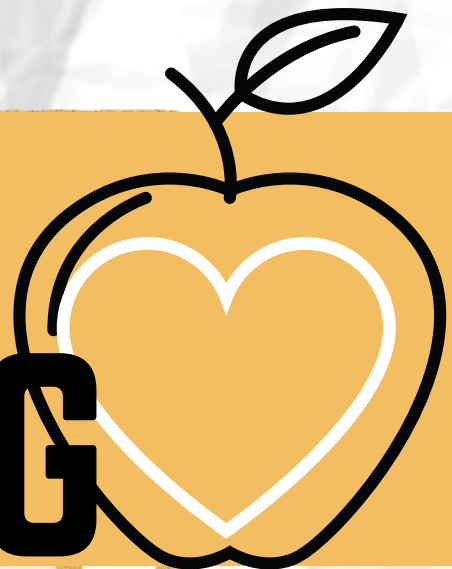


# SHARING IS CARING



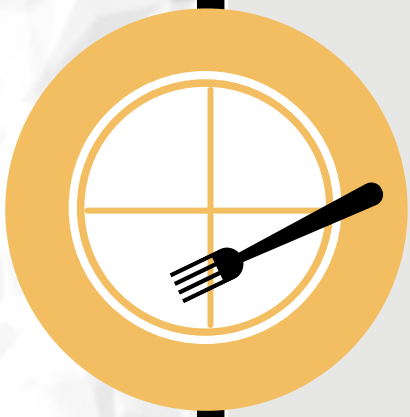
**Share tables** in K-12 schools help redistribute food between students and prevent food waste.



**share ta·ble**  
/SHer/ /tābəl/

*noun*  
A place where students can place whole, unopened food for other students to take for free.

## Keys to share table success



Share tables are more likely to be used if placed in high traffic areas. They can be placed near the cashier or end of the food service line.

Talk to students about the importance of reducing food waste and how to use the share table through assemblies, flyers and lesson plans.



Items left on the share table at the end of lunch may be donated to local food pantries or soup kitchens.

Learn more through the New Jersey School Food Waste Guidelines  
[www.nj.gov/dep/seeds/sfwg/](http://www.nj.gov/dep/seeds/sfwg/)

  @NewJerseyDEP

