



State of New Jersey

DEPARTMENT OF ENVIRONMENTAL PROTECTION

DIVISION OF WATER MONITORING, STANDARDS AND PESTICIDE CONTROL

401 East State Street

P.O. Box 420, Mail Code 401-041

Trenton, New Jersey 08625-0420

Tel. (609) 292-1623 • Fax (609) 633-1276

www.nj.gov/dep

PHILIP D. MURPHY

Governor

SHAWN M. LATOURETTE

Commissioner

SHEILA Y. OLIVER

Lt. Governor

Public Notice of the Suspension of Harvest from Shellfish Beds Dangerous to Health

The Department of Environmental Protection (Department) routinely monitors water quality in shellfish growing areas throughout New Jersey to ensure the wholesomeness of shellfish intended for human consumption. Analysis of water samples indicate that certain waters in portions of the Navesink River and the Shark River no longer meet their current shellfish growing water classifications as set forth in the Shellfish Growing Water Classification rules at N.J.A.C. 7:12 (https://www.nj.gov/dep/rules/rules/njac7_12.pdf).

TAKE NOTICE, that pursuant to N.J.A.C. 7:12-1.4(b) and the statutory authority granted the Department at N.J.S.A. 58:24-2 to protect the public health from the risk posed by the consumption of shellfish that may have been subjected to pollution or other conditions that may render the shellfish dangerous to health, I hereby immediately suspend the harvest of shellfish from the following waters, as further described below:

Shark River (153.7 acres)

Navesink River (1.6 acres)

In accordance with N.J.A.C. 7:12-1.3, the waters in the aforementioned areas are classified as *Approved*, *Conditionally Approved*, or *Restricted*. To be classified as *Approved*, the bacteriological quality of water samples at every sample station in the growing area shall not exceed the fecal coliform median or geometric mean of 14 colony-forming units (CFU) per 100 milliliters (ml) and the estimated 90th percentile shall not exceed 31 CFU per 100 ml. To be classified as *Conditionally Approved*, the bacteriological quality of water samples shall meet the *Approved* criteria during the time period of November 1 through April 30 and shall meet the *Restricted* criteria during the time period of May 1 through October 31. To be classified as *Restricted*, the bacteriological quality of water samples at every sample station in the growing area shall not exceed the fecal coliform median or geometric mean of 88 CFU per 100 ml and the estimated 90th percentile shall not exceed 163 CFU per 100 ml. For more information on shellfish growing water classifications please see the National Shellfish Sanitation Program (NSSP), Guide for the Control of Molluscan Shellfish, incorporated by reference at N.J.A.C. 7:12-1.3(a) and available at the U.S. Food and Drug Administration website: <https://www.fda.gov/food/federalstate-food-programs/national-shellfish-sanitation-program-nssp>.

Water sampling data collected and analyzed by the Department indicate that certain shellfish growing waters in the aforementioned areas do not consistently meet the fecal coliform standards for *Approved*, *Conditionally Approved*, or *Restricted* waters.

The suspension of harvest shall take effect immediately and continue pending the establishment by rulemaking of the appropriate classification and boundaries of the waters so classified, as provided by N.J.A.C. 7:12-1.4, or until further determination by the Department that the area of water subject to the suspension meets the standards for its current classification.

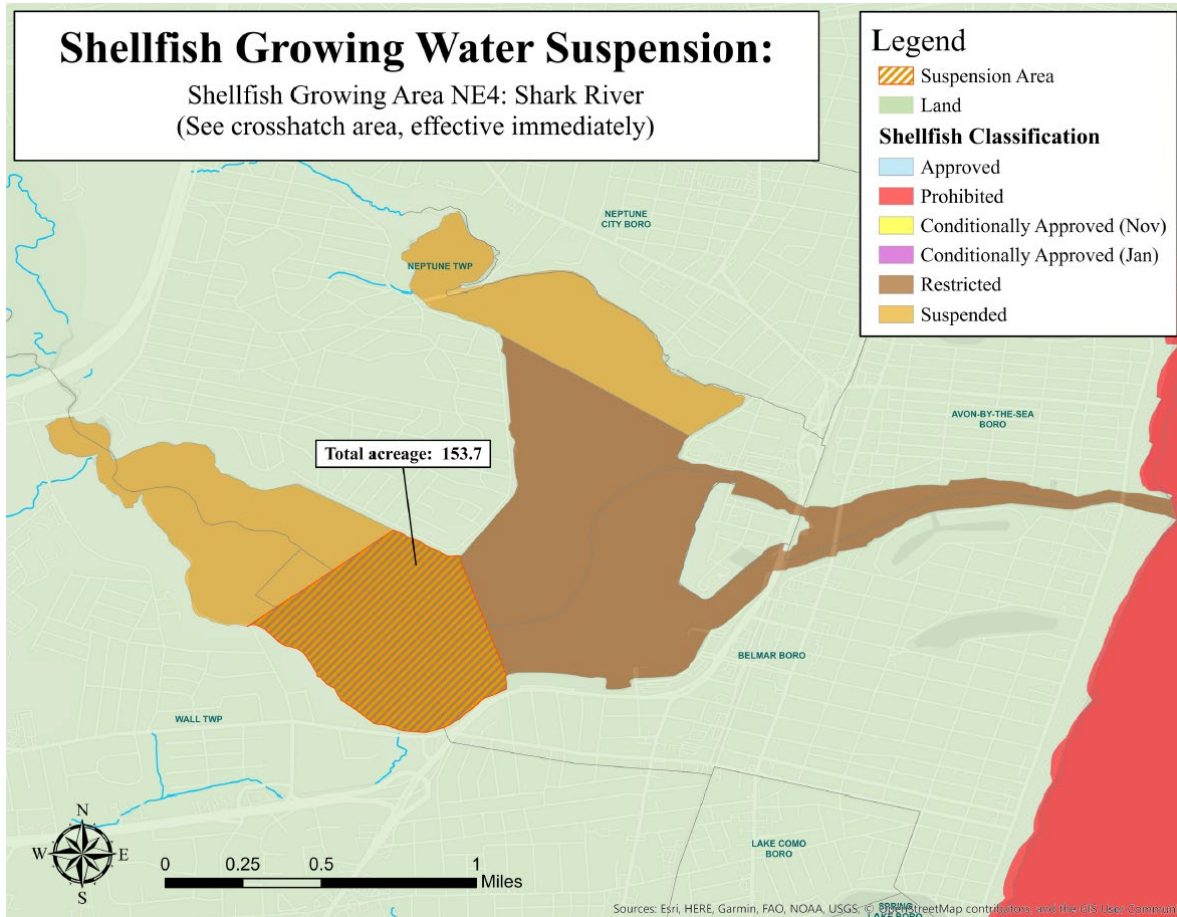
Date: 5/4/22

Bruce Friedman

Bruce Friedman, Director
Division of Water Monitoring, Standards &
Pesticide Control

Shark River Area (153.7 acres)

All of the shellfish waters inclusive of an area beginning at a point of coordinates latitude 40.186082 N and longitude -74.04408 W moving along the shoreline in an easterly direction to a point of coordinates latitude 40.184865 N and longitude -74.041166 W moving in a south easterly direction across the waterway to a point of coordinates latitude 40.179258 N and longitude -74.038908 W moving along the shoreline in a westerly direction to a point of coordinates latitude 40.181697 N and longitude -74.050633 W moving in a north easterly direction to the point of origin and terminating.



Navesink River Area (1.6 acres)

All of the shellfish waters inclusive of an area beginning at a point of coordinates latitude 40.378894 N and longitude -74.012139 W moving along Oceanic Bridge Road in a southerly direction to a point of coordinates latitude 40.378296 N and longitude -74.011462 W, then moving in a easterly direction along the shoreline to a point of coordinates latitude 40.378866 N and longitude -74.009263 W moving in a north westerly direction to the point of origin and terminating.

