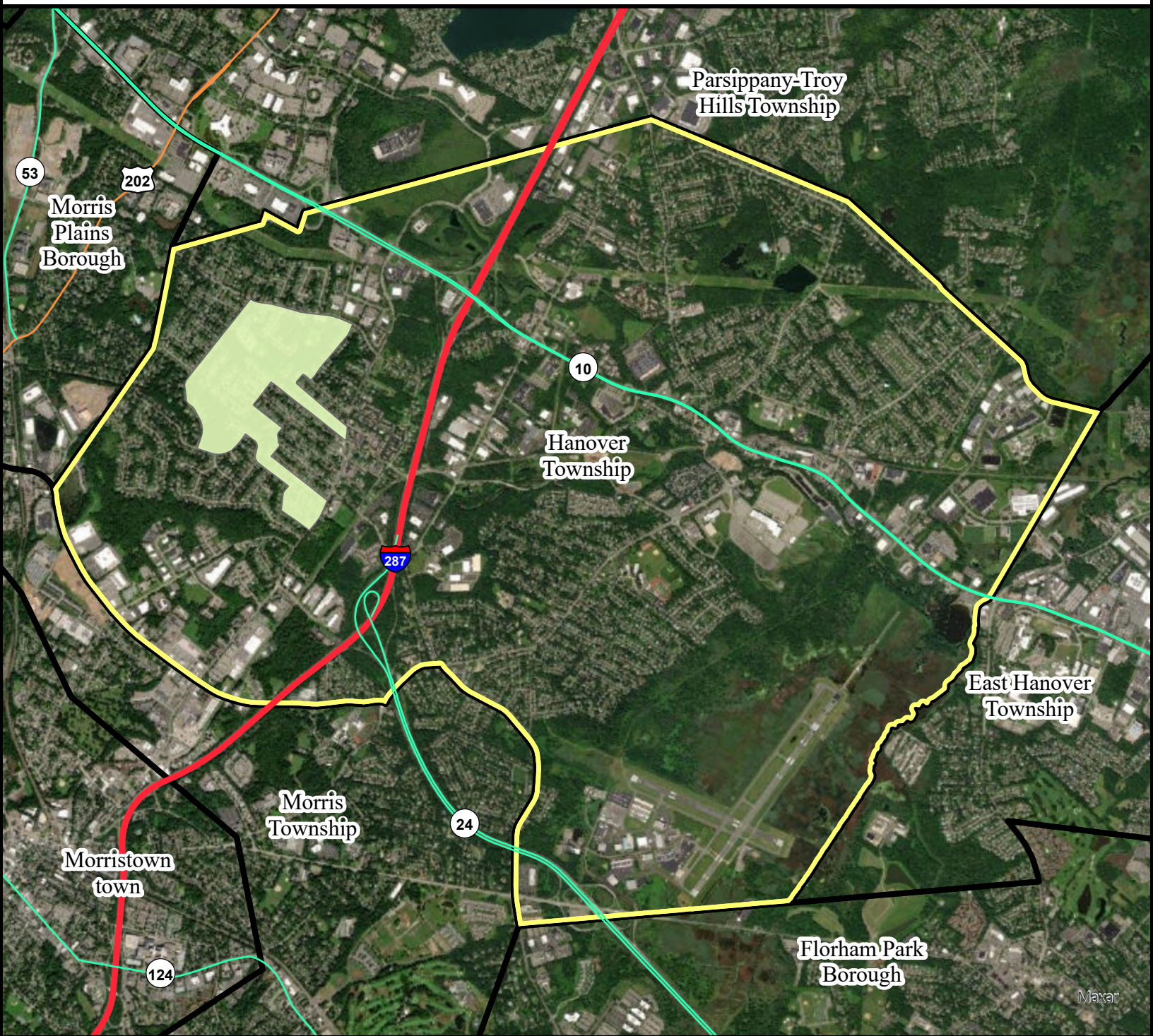


Overburdened Communities under the New Jersey Environmental Justice Law in Hanover Township, Morris County



Maxar

An overburdened community is any census block group, as determined in accordance with the most recent United States Census, in which: (1) at least 35 percent of the households qualify as low-income households; (2) at least 40 percent of the residents identify as minority or as members of a State recognized tribal community; or (3) at least 40 percent of the households have limited English proficiency. Census block groups with zero population and located immediately adjacent to an OBC are labeled as "adjacent." Existing or proposed facilities located in adjacent block groups may be required to conduct further analysis in accordance with the Environmental Justice Rules (<https://www.nj.gov/dep/rules/proposals/proposal-20220606a.pdf>).

Disclaimer: The boundary information in the TIGER/Line Shapefiles used for the maps are for statistical data collection and tabulation purposes only; their depiction and designation does not constitute a determination of jurisdictional authority or rights of ownership or entitlement and they are not legal land descriptions.

| | |
|---|---------------|
| Municipalities | Toll Road |
| Hanover Township | Interstate |
| Overburdened Community Criteria | |
| Adjacent | US Highway |
| Limited English | State Highway |
| Low Income | |
| Low Income and Limited English | |
| Low Income and Minority | |
| Low Income, Minority, and Limited English | |
| Minority | |
| Minority and Limited English | |

NEW JERSEY
DEPARTMENT OF
ENVIRONMENTAL
PROTECTION

Date: 6/1/2022

N

0 0.3 0.6
Miles