

BEAR'S STORY

Bear is a Black lab / Chow mutt discovered at an animal shelter in Missoula, Montana by Working Dogs for Conservation (WDC). WDC trained Bear to find Northern pine snakes and bobcat scats, and in NJ trained 2 handlers in the Endangered & Nongame Species Program (ENSP) to work with him in 2005. ENSP/WDC have since trained Bear to find additional targets.

The use of wildlife detection dogs has been increasing dramatically in ecological studies over the past 10 years because of their success as a survey tool and the wealth of information that can be gleaned from their targets. This information helps us develop effective conservation strategies for NJ's rare wildlife species.

QUALITIES OF A GOOD DETECTION DOG

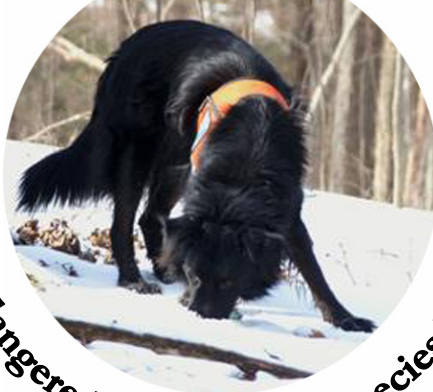
- Low prey drive
- High "ball drive"
- Connects odor with reward
- Provides passive response (sit and stay)



© Gretchen Fowles

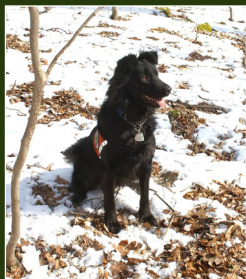


Meet 'Bear' Wildlife Detection Dog



NJ Endangered & Nongame Species Program

ADVANTAGES OF A DETECTION DOG



© MacKenzie Hall

- Non-invasive sampling
- Cost-effective & time-efficient
- Easily adaptable (species, sites)
- Increased detection of rare species

WHAT WE CAN LEARN ABOUT TARGETS

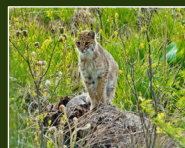
- Distribution
- Habitat use
- Population size
- Survival
- Sex ratio



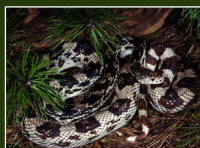
© Keith R. Frerichs

BEAR'S TARGET SCENTS

- Bobcat scat - Endangered
- Northern pine snake - Threatened
- Bog turtles - Endangered (+ federally listed)
- Eastern box turtle - Special Concern
- Wood turtle - Threatened



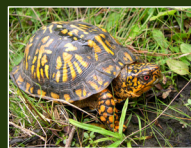
© George Cevera



© Bob Zappalorti



© Brian Zarate



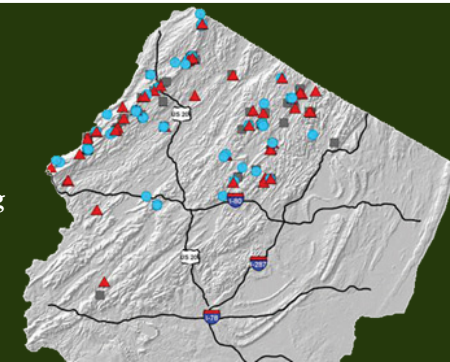
© Brian Zarate



© Brian Zarate

WHAT DNA EXTRACTED FROM SCAT TELLS US

- Species verification
- Individual identity
- Gender
- Kinship / parent - offspring
- Hormone levels



Bobcat Scat
Survey Results

- Male
- ▲ Female
- Bobcat
(no ind. ID)