

Deer Management Zone

BOUNDARY DESCRIPTIONS

See page 88 for public land open to deer hunting listed by management zone.

Zone 1: That portion of Sussex County lying within a continuous line beginning at the intersection of Rt. 521 (River Rd.) and Mashipacong Rd.; then west along the northern boundary of the Delaware Water Gap National Recreation Area to the east bank of the Delaware River; then north along the east bank of the Delaware River to the New York State line; then east along the state line to Rt. 519; then south along Rt. 519 to its intersection with Rt. 206 at Branchville; then northwest along Rt. 206 to the intersection with Rt. 633; then south along Rt. 633 to its intersection with Rt. 521; then northwest along Rt. 521 to its intersection with Rt. 206; then northwest on Rt. 521/Rt. 206 to its intersection with Rt. 560; then west along Rt. 560 to the intersection with Ridge Rd.; then north on Ridge Rd. to the intersection with Rt. 646; then east on Rt. 646 to the intersection with Rt. 645 in Hainesville; then north on Rt. 645 to the intersection with Rts. 206 and 521; then north on Rts. 206 and 521 to Montague; then north on Rt. 521 (River Rd.) to the intersection with Mashipacong Rd., the point of beginning. The island of Mashipacong lying in the Delaware River is included in this zone. High Point State Park (Zone 67) is excluded from Zone 1.

Zone 2: That portion of Sussex County lying within a continuous line beginning at the intersection of Rt.

94 and the New York State line; then south along Rt. 94 to its intersection with Rt. 23 at Hamburg, then southeast along Rt. 23 to its intersection with Rt. 517 at Franklin; then south along Rt. 517 to its intersection with Rt. 206 at Andover; then north along Rt. 206 to its intersection with Rt. 519 at Newton; then north along Rt. 519 to the New York State line; then east along the New York State line to Rt. 94 to the point of beginning.


Zone 3: That portion of Sussex, Morris, Passaic, and Bergen counties lying within a continuous line beginning at the intersection of Rt. 94 and the New York State line; then east along the New York State line to its intersection with Rt. 202 near Suffern; then south along Rt. 202 to its intersection with Rt. 287 in Oakland; then south on Rt. 287 to its intersection with Rt. 23 in Riverdale; then west along Rt. 23 to its intersection with Rt. 94 at Hamburg; then north along Rt. 94 to the point of beginning on the New York State line.

Zone 4: That portion of Sussex and Warren counties lying within a continuous line beginning at the intersection of Rt. 521 (River Rd.) and New Mashipacong Rd.; then running along Rt. 521 to the intersection with Rt. 206 in Montague; then south on Rt. 206 to the intersection with Rt. 645 (Layton-Hainesville Rd.); then south on Rt. 645 to the intersec-

tion with Rt. 646 in Hainesville (Jagger Rd.); then west on Rt. 646 to the intersection with Ridge Rd.; then south on Ridge Rd. to the intersection with Rt. 560 (Dingman's Bridge Rd.); then southeast along Rt. 560 to its intersection with Rt. 206; then south on Rt. 206 to its intersection with Rt. 521; then south along Rt. 521 to its intersection with Beavans Rd. at the Hampton Twp.–Frankford Twp. border; then northwest along Beavans Rd. to its intersection with the base of the Kittatinny Ridge then southwest along the east base of the Kittatinny Ridge to the Delaware River at the Delaware Water Gap north and west of Quarry Rd.; then north along the east bank of the Delaware River to the northern park boundary of the Delaware Water Gap National Recreation Area; then east along the northern park boundary of the Delaware Water Gap National Recreation Area to Rt. 521 (River Rd.), the point of beginning. Namanock, Minisink, Depew, Tocks, Poxono and Labar Islands in the Delaware River are included in this zone.

Zone 5: That portion of Warren and Sussex counties lying within a continuous line beginning at the intersection of Rt. 521 and Beavans Rd. at the Hampton Township–Frankford Township border; then southeast on Rt. 521 to its intersection with Rt. 633; then north on Rt. 633 to its intersection with

Thompson Management, LLC




+/- 6,000 Acres of Hunting Land

Available for Bid in Central New Jersey
Annual bids begin July 1st

For more information, or to submit a bid,
visit our website...

ThompsonManagementLLC.com
or call **609.921.7655**

*It's never too late...
Submit your bid today!*



Be Sure of Your Target and Beyond

Be aware of all SAFETY ZONES.

Violation	First Offense	Repeat Offenses
Deer Permit Violations Hunting without permit, wrong season, wrong zone, permit transfer	\$100 to \$300 fine	\$300 to \$500 fine Two convictions within five years and two-year loss of license
Firearm hunting within 450 ft. of a school playground or building; bowhunting within 450 ft. of a school playground or within 150 ft. of a building	\$100 to \$300 fine	\$300 to \$1,500 fine and permanent loss of license
Negligent use of a weapon Did cause injury or death of another person	\$500 to \$2,000 fine and five year loss of license	\$1000 to \$4,000 fine and permanent loss of license
Damage or injury to real or personal property of another	Up to \$2,000 fine and five-year loss of license plus restitution for damages	Up to \$2,000 fine and permanent loss of license plus restitution for damages
Careless use of a weapon Shooting into safety zone, handling weapon in unsafe manner	\$100 to \$500 fine and two-year loss of license	\$100 to \$500 fine and two-year loss of license
Trespass	\$100 to \$200 fine	\$200 to \$500 fine and five-year loss of license

Rt. 206 in Branchville; then southeast along Rt. 206 to its intersection with Rt. 519 at Branchville; then south along Rt. 519 to its intersection with Rt. 206 at Newton; then south along Rt. 206 to its intersection with Rt. 517 at Andover; then south along Rt. 517 to its intersection with Rt. 46 at Hackettstown; then west along Rt. 46 to its intersection with the Delaware River at Manunkachunk; then north along the east bank of the Delaware River to its intersection with the Zone 4 boundary at the Delaware Water Gap north and west of Quarry Rd.; then northeast along the base of the Kittatinny Ridge to its intersection with Beavans Rd. at the Hampton Twp.-Frankford Twp. border; then southeast along Beavans Rd. to its intersection with Rt. 521 at the point of beginning.

Zone 6: That portion of Morris, Sussex, Passaic, Warren and Essex counties lying within a continuous line beginning at the intersection of Rt. 80 and Rt. 517 at Allamuchy; then northeast along Rt. 517 to its intersection with Rt. 23 at Franklin; then southeast along Rt. 23 to its intersection with Rt. 618; then south along Rt. 618 to its intersection with Rockaway Valley Rd.; then southwest along Rockaway Valley Rd. to its intersection with Diamond Spring Rd.; then south along Diamond Spring Rd. with West Main St. in Denville; then south along West Main St. to its intersection with Rt. 80; then west along Rt. 80 to the point of beginning at Allamuchy. Picatinny Arsenal (Zone 54) is excluded from Zone 6.

Zone 7: That portion of Hunterdon and Warren counties lying within a continuous line beginning at the intersection of Rts. 31 and 78 at Clinton; then north along Rt. 31 to its intersection with Rt. 46 at Buttzville; then west on Rt. 46 to the Delaware River at Manunkachunk; then south along the east bank of the Delaware to its intersection with Rt. 78 at Phillipsburg; then east along Rt. 78 to the point of beginning at Clinton.

Zone 8: That portion of Hunterdon, Morris, Somerset and Warren counties lying within a continuous line beginning at the intersection of Rts. 22 and 206 near Somerville; then north along Rt. 206 to its intersection with Rt. 80 near Netcong; then west along Rt. 80 to its intersection with Rt. 517 at Allamuchy; then south along Rt. 517 to its intersection with Rt. 46 at Hackettstown; then west along Rt. 46 to its intersection with Rt. 31 at Buttzville; then southeast along Rt. 31 to its intersection with Rt. 22 at Clinton; then east along Rt. 22 to the point of beginning at Somerville.

Zone 9: Those portions of Morris and Somerset counties lying within a continuous line beginning at the intersection of Rt. 206 and Rt. 80 near Netcong; then east along Rt. 80 to its intersection with Rt. 46; then east on Rt. 46 to the intersection with Rt. 10 in Ledgewood; then east on Rt. 10 to the intersection with Morris Tpk.; then east and south on Morris Tpk. to Calais Rd.; then west on Calais Rd. to Combs Hollow Rd.; then south on Combs Hollow Rd. to

Calais Rd.; then south on Calais Rd. to Mountain Ave. in Mendham; then south and east on Mountain Ave. to Hilltop Rd. (Rt. 525); then south on Rt. 525 to the intersection with Rt. 78; then west on Rt. 78 to the intersection with Rt. 206 near Pluckemin; then north on Rt. 206 to the intersection with Rt. 80 in Netcong, the point of beginning.

Zone 10: That portion of Hunterdon and Warren counties lying within a continuous line beginning at the intersection of Rts. 31 and 12 in Flemington; then north along Rt. 31 to its intersection with Rt. 78 at Clinton; then west along Rt. 78 to the Delaware River at Phillipsburg; then south along the east bank of the Delaware River to Rt. 12 at Frenchtown; then east along Rt. 12 to the point of beginning at Flemington.

Zone 11: That portion of Hunterdon County lying within a continuous line beginning at the intersection of Rts. 12 and 31 and 202 at Flemington; then southwest along Rt. 202 to the Delaware River; then northwest along the east bank of the Delaware River to its intersection with Rt. 12 at Frenchtown; then east along Rt. 12 to the point of beginning at Flemington. Shyhawks, Treasure, Rush, Bull and Eagle Islands lying in the Delaware River are in this zone.

Zone 12: That portion of Somerset, Hunterdon and Mercer counties lying within a continuous line beginning at the intersection of Rts. 31 and 22 at Clinton; then east on Rt. 22 to its intersection with Rt. 206 at Somerville; then south along Rt. 206 to its intersection with Rt. 546 at Lawrenceville; then west on Rt. 546 to its intersection with Rt. 31 at the Pennington traffic circle; then north along Rt. 31 to the point of beginning at Clinton. That portion of Round Valley Recreation Area designated as open to deer hunting is included in Zone 12.

Zone 13: That portion of Morris, Somerset and Union counties lying within a continuous line beginning at the intersection of Rts. 22 and 206 at Somerville; then north on Rt. 206 to the intersection with Rt. 78 near Pluckemin; then east on Rt. 78 to the intersection with Rt. 525; then north on Rt. 525 to Mountain Ave. in Mendham; then north and west on Mountain Ave. to Calais Rd.; then north on Calais Rd. to Combs Hollow Rd.; then north on Combs Hollow Rd. to Calais Rd.; then east on Calais Rd. to Morris Tpk.; then north and west on Morris Tpk. to Rt. 10; then west on Rt. 10 to Rt. 46 in Ledgewood; then west on Rt. 46 to the intersection with Rt. 80 near Netcong; then east on Rt. 80 to the intersection with Rt. 511; then south on Rt. 511 to the intersection with Rt. 124 in Morristown; then southeast along Rt. 124 to the intersection with Rt. 82; then southwest along Rt. 82 to the intersection with Rt. 22; then southwest along Rt. 22 to the point of beginning at Somerville. The Great Swamp National Wildlife Refuge (Zone 38) is excluded from Zone 13.

(continued on page 36)

COYOTE WARS

A Deer Hunter's Guide to Hunting Coyotes

"Coyote Wars" is the book that every deer hunter in the Northeast has been waiting to get their hands on. Author David Willette explains in detail each method of hunting coyotes; baiting coyotes, calling in coyotes, and chasing coyotes with dogs. "Coyote Wars" is loaded with stories from the experts who are on the coyote front. Coupled with dozens of graphic photos, the author gets his point across with enthusiasm and simplicity. "Coyote Wars" is engaging and informative. A true how-to book with passion, "Coyote Wars" will make you laugh, cry and is also a reliable guide that offers valuable insight into the various forms of coyote hunting.

Available now for

\$19.95

(includes shipping)

WARNING GRAPHIC IMAGES



Please make checks payable to David Willette and mail to:

150 Oak Hill, North Adams, MA 01247

www.coyotewars.com

www.TheHuntersButcher.com

Hot Days? Refrigeration is included.

Back Strap & Tenderloins Whole, The Rest Ground With Pork \$65
Regular Boneless Deer In Roasts, Steaks & Chop Meat With Pork \$75
Italian Sausage, Slim Jims, Smoked Meats

Open For The Entire Deer Season. 7 Days A Week.
732-414-1446 · 967 Adelpia Farmingdale Rd. Adelpia, NJ 07710

Catskill Pheasantry



- Automated Sporting Clays & Five Stand
- Rifle/Pistol Range
- Cabins/Lodging

845.887.4487

www.CatskillPheasantry.com

Deer Management Zone

BOUNDARY DESCRIPTIONS

(continued from page 35)

Zone 14: That portion of Mercer, Middlesex, Somerset and Burlington counties lying within a continuous line beginning at the intersection of Rts. 22 and 206 at Somerville, then east along Rt. 22 to its intersection with Interstate 287; then south on Interstate 287 to its intersection with Rt. 18; then south on Rt. 18 to its intersection with the New Jersey Turnpike; then southwest along the New Jersey Turnpike to its intersection with Rt. 545; then northwest on Rt. 545 which becomes Farnsworth Ave.; then continuing northwest on Farnsworth Ave. to its intersection with W. Burlington St.; then southwest on W. Burlington St. to its intersection with Interstate 295; then north on Interstate 295 to its intersection with the Delaware River at Bordentown; then northwest along the east bank of the Delaware River to Rt. 546 at Washington's Crossing; then east on Rt. 546 to its intersection with Rt. 206 at Lawrenceville; then north along Rt. 206 to the point beginning at Somerville. Rotary and Blauguard Islands lying in the Delaware River are in this zone.

Zone 15: That portion of Monmouth, Mercer and Middlesex counties lying within a continuous line beginning at the intersection of the New Jersey Turnpike and Rt. 522 near Jamesburg; then south on the Turnpike to its intersection with Interstate 195, then east on Rt. I-195 to its intersection with Rt. 537 near Holmeson; then northeast on Rt. 537 to its intersection with Rt. 522 in Freehold; then northwest on Rt. 522 to its intersection with the New Jersey Turnpike, the point of beginning. Monmouth Battlefield State Park is excluded from this zone.

Zone 16: That portion of Monmouth and Ocean counties lying within a continuous line beginning at the intersection of Rt. 537 and Rt. 571 near Holmeson; then southeast on Rt. 571 to the intersection with Rt. 547; then northeast on Rt. 547 through Farmingdale to the intersection with Tinton Falls Rd.; then north on Tinton Falls Rd. to the intersection with Rt. 33 and Rt. 34; then north on Rt. 34 to the intersection with the fenced boundary of the Earle Naval Weapons Depot property; then westward along the fenced border of the Earle Depot to the intersection with Rt. 33; then west along Rt. 33 to the intersection with Rt. 537 in Freehold; then southwest on Rt. 537 to the intersection with Rt. 571 near Holmeson, the point of beginning.

Zone 17: That portion of Mercer, Monmouth, Burlington and Ocean counties lying within a continuous line beginning at the intersection of the New Jersey Turnpike and Interstate 195, then east along Interstate 195 to the intersection with Rt. 537 near Holmeson; then southwest along Rt. 537 to the intersection with Hawkin Rd. (Prosperstown-Colliers Mills Rd.: Rt. 640) then southeast along Hawkin Rd. (Prosperstown-Colliers Mills Rd.: Rt. 640); to the intersection with Colliers Mills Rd.; then west along Colliers Mills Rd. to its intersection with Woodruff Rd.; then southwest along Woodruff Rd. to the intersection with Rt. 539; then southeast along Rt. 539 to the border of the Dix-McGuire section of Joint Base McGuire-Dix-Lakehurst; then westward along the Dix-McGuire section of Joint Base McGuire-Dix-Lakehurst boundary to Rt. 545 near Wrightstown; then northwest along Rt. 545 to the intersection with the

New Jersey Turnpike; then northeast along the New Jersey Turnpike to its intersection Interstate 195 the point of beginning.

Zone 18: That portion of Ocean County lying within a continuous line beginning at the intersection of Rt. 530 and the Garden State Parkway at South Toms River; then west along Rt. 530 to the intersection with Rt. 70; then west along Rt. 70 to the border of the Dix-McGuire section of Joint Base McGuire-Dix-Lakehurst; then northward along the Dix-McGuire section of Joint Base McGuire-Dix-Lakehurst boundary to the northernmost intersection of the Dix-McGuire section of Joint Base McGuire-Dix-Lakehurst border and Rt. 539; then northwest along Rt. 539 to the intersection with Woodruff Rd.; then northeast along Woodruff Rd. to the intersection with Colliers Mills Rd.; then east along Colliers Mills Rd. to the intersection with Hawkin Rd. (Prosperstown-Colliers Mills Rd.: Rt. 640); then northwest along Hawkin Rd. (Prosperstown-Colliers Mills Rd.: Rt. 640) to the intersection with Rt. 537 near Prosperstown; then northeast along Rt. 537 to the intersection with Rt. 571 near Holmeson; then southeast along Rt. 571 to the Garden State Parkway; then south along the Garden State Parkway to the point of beginning near South Toms River.

Zone 19: That portion of Burlington and Camden counties lying within a continuous line beginning at the intersection of Rt. 530 and Rt. 646 (New Lisbon-Four Mile Rd.); then southeast on Rt. 646 to its intersection with Turkey Buzzard Bridge Rd.; then west on Turkey Buzzard Bridge Rd. to its intersection with Rt. 644 (Buddtown-Ong's Hat Rd.); then southeast on Rt. 644 to its intersection with Rt. 70 at Four Mile Circle; then west on Rt. 70 to its intersection with Burr's Mill Rd.; then southwest on Burr's Mill Rd. to its intersection with Avenue Rd.; then south on Avenue Rd. to its intersection with Sooy Place Rd.; then south on Sooy Place Rd. to its intersection with Irick's Causeway; then southwest on Irick's Causeway to its intersection with Rt. 532 (Chatsworth Rd.); then west along Rt. 532 to its intersection with Butterworth's Bogs Rd.; then south and west along Butterworth's Bogs Rd. to its intersection with Brace Lane; then west along Brace Lane to its intersection with Bozarthtown Rd.; then southwest along Bozarthtown Rd. to its intersection with Dingtletown Rd.; then southwest along Dingtletown Rd. which becomes Forked Neck Rd. and curves to the west; then west along Forked Neck Rd. to its intersection with Rt. 206; then south along Rt. 206 to its intersection with Rt. 541, Stokes Rd.; then northwest along Rt. 541 to its intersection with Willow Grove Rd.; then southwest on Willow Grove Rd. to its intersection with Atsion Rd.; then northwest on Atsion Rd. to its intersection with Rt. 534, Jackson Rd.; then west along Rt. 534 to its intersection with Rt. 73; then north along Rt. 73 to its intersection with the New Jersey Turnpike; then northeast along the New Jersey Turnpike to its intersection with Rt. 38; then east along Rt. 38 to its intersection with Rt. 530; then east along

Old Bridge Rifle and Pistol Club

OUTDOOR

High Power
IPSC (Action)
World Class Steel Shoot
Black Powder
Static Steel
IDPA

INDOOR

(24 Hours 7 Days a week)
Small Bore
PPC
Ballseye
RPO Qualification



INDOOR RANGE

MAPLE ST. (OFF OF RT 18)

OUTDOOR RANGE

JAKE BROWN RD. (OFF OF RT 516)

OLD BRIDGE, NJ

732-360-1987
www.obrpc.org

Rt. 530 to its intersection with Rt. 616 (Vincentown-Pemberton Rd.); then northeast on Rt. 616, Hanover St., into the town of Pemberton to its intersection with Elizabeth St., then east on Elizabeth St., which becomes Pemberton-Browns Mills Rd. (Rt. 687) to its intersection with Rt. 530 (Pemberton-By-Pass Rd.); then east on Rt. 530 to its intersection with Rt. 646 (New Lisbon-Four Mile Rd.), the point of beginning. Fort Dix Military Reservation (Zone 37) is excluded from Zone 19. Franklin Parker Preserve and Four Mile Spring Preserve (Zone 68) is excluded from Zone 19.

Zone 20: Not designated.

Zone 21: That portion of Ocean and Burlington counties lying within a continuous line beginning at the intersection of Rt. 530 and the Garden State Parkway near South Toms River; then south along the Parkway to its intersection with Rt. 72; then northwest along Rt. 72 to its intersection with Rt. 644 (Buddtown-Ong's Hat Rd.) at Four Mile Circle; then northwest on Rt. 644 to its intersection with Turkey Buzzard Bridge Rd.; then northeast on Turkey Buzzard Bridge Rd. to its intersection with Rt. 646 (New Lisbon-Four Mile Rd.); then northwest on Rt. 646 to its intersection with Rt. 530 (Pemberton-Browns Mills Rd.); then east along the southern border of Fort Dix Military Reservation

to its intersection with Rt. 70; then east on Rt. 70 to its intersection with Rt. 539 and Rt. 530 near Whiting; then east along Rt. 530 to its intersection with the Garden State Parkway near South Toms River, the point of beginning. Fort Dix Military Reservation (Zone 37) is excluded from Zone 21.

Zone 22: That portion of Ocean and Burlington counties lying within a continuous line beginning at the intersection of the Garden State Parkway and Rt. 72 near Manahawkin; then south along the Garden State Parkway to its intersection with Stage Rd.; then west along Stage Rd. to its intersection with Leektown Rd.; then west along Leektown Rd. (which turns into Rt. 653 to its intersection with the Wading River; then south along the east bank of the Wading River to its intersection with the Mullica River and the Atlantic-Burlington County line; then east along the Atlantic-Burlington County line to the Atlantic Ocean, then east to the Atlantic Ocean; then north along the Atlantic Ocean to Rt. 72 at Ship Bottom; then west along Rt. 72 to the Garden State Parkway, the point of beginning. The Edwin B. Forsythe National Wildlife Refuge (Zone 58) is excluded from Zone 22.

Zone 23: That portion of Burlington, Atlantic and Camden counties lying within a continuous line begin-

ning at the intersection of Rt. 563 and the Mullica River at the Atlantic-Burlington County line near Green Bank; then north and west along the north bank of the Mullica River to its intersection with Rt. 542 at Pleasant Mills; then west along Rt. 542 to its intersection with Nescochague Creek; then northwest along Nescochague Creek to Great Swamp Branch; then westward along Great Swamp Branch to its intersection with Rt. 206 (just south of the intersection of Rt. 206 and Middle Rd.); then south along Rt. 206 to its intersection with Rt. 30; then northwest along Rt. 30 to its intersection with Rt. 73; then north on Rt. 73 to its intersection with Rt. 534, Jackson Rd.; then east along Rt. 534 to its intersection with Atsion Rd.; then southeast on Atsion Rd. to its intersection with Willow Grove Rd.; then northeast on Willow Grove Rd. to its intersection with Rt. 541, Stokes Rd.; then southeast along Rt. 541 to its intersection with Rt. 206; then north along Rt. 206 to its intersection with Forked Neck Rd. then east along Forked Neck Rd. which becomes Dingtletown Rd. curving to the northeast; then northeast along Dingtletown Rd. to its intersection with Bozarthtown Rd.; then northeast on Bozarthtown Rd. to its intersection with Brace Lane; then east on Brace Lane to its intersection with Butterworth's Bogs Rd.; then north on Butterworth's

(continued on page 38)

TAKE YOUR BEST SHOT!

World's Largest  Dealer!

- Huge Selection of Bows & Crossbows from the Industry's Best
- Tap into Over 500 Years of Archery Experience
- Supporting All Types of Archery for Nearly 30 Years
- Dependable, Trusted Advice Known Worldwide
- Multi-Million Dollar Inventory in 35,000 sq. ft.

Visit Our Showroom Today!

www.LancasterArchery.com

1-800-829-7408

2195-A Old Philadelphia Pike • Lancaster, PA 17602

October 1 - July 31 (EST)

Mon. Wed. Thurs. 9 am - 9 pm

Tuesday & Friday 9 am - 6 pm

Saturday 9 am - 4 pm

August 1 - September 30 (EST)

Monday through Thursday 9 am - 9 pm

Friday 9 am - 6 pm

Saturday 9 am - 4 pm



Lancaster
ARCHERY SUPPLY

"Leading the World in 3D & Target Archery"

Deer Management Zone

BOUNDARY DESCRIPTIONS

(continued from page 37)

Bogs Rd. to its intersection with Rt. 532 (Chatsworth Rd.); then east on Rt. 532 to its intersection with Irick's Causeway; then northeast on Irick's Causeway to its intersection with Sooy Place Rd. (Vincentown-South Park Rd.); then northwest on Sooy Place Rd. to its intersection with Avenue Rd.; then northeast on Avenue Rd. to its intersection with Burr's Mill Rd.; then northeast on Burr's Mill Rd. to its intersection with Rt. 70; then east on Rt. 70 to its intersection with Rt. 72 at Four Mile Circle; then southeast on Rt. 72 to its intersection with Rt. 563; then southwest along Rt. 563 to its intersection with the Mullica River at the Atlantic-Burlington County line, the point of beginning near Green Bank. Franklin Parker Preserve and Four Mile Spring Preserve (Zone 68) is excluded from Zone 23.

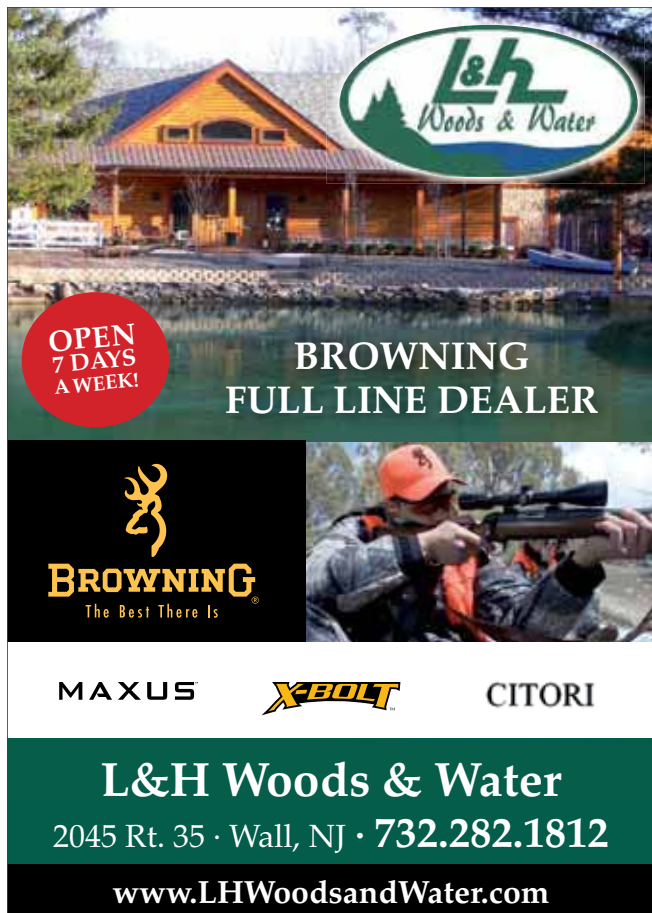
Zone 24: That portion of Burlington and Ocean counties lying within a continuous line beginning at the intersection of Rt. 563 and Rt. 72; then southeast along Rt. 72 to its intersection with the Garden State Parkway; then south along the Parkway to its intersection with Stage Rd.; then west along Stage Rd. to its intersection with Leektown Rd.; then west along Leektown Rd. (which turns into Rt. 653) to its intersection with the Wading River; then south along the east bank of the Wading River to its intersection

with the Mullica River and the Atlantic-Burlington County line; then west along the north bank of the Mullica River to its intersection with Rt. 563 near Green Bank; then north along Rt. 563 to its intersection with Rt. 72, the point of beginning.

Zone 25: That portion of Salem, Gloucester, Atlantic and Camden counties lying within a continuous line beginning at the intersection of Rt. 54 and Rt. 40 near Buena; then west on Rt. 40 to its intersection with Rt. 553; then north on Rt. 553 to its intersection with Rt. 610 (Aura Rd.); then southeast on Rt. 610 to its intersection with Rt. 655 (Fries Mill Rd. then north on Rt. 655 to its intersection with Rt. 322; then west on Rt. 322 to its intersection with Rt. 47 at Glassboro; then north on Rt. 47 to its intersection with County Rd. 635 (Hurffville-Grenloch Rd.); then eastward on County Rd. 635 to its intersection with County Rd. 705 (County House Rd.); then southeast along Rt. 705 to its intersection with County Rd. 688 (Turnerville-Hickstown Rd.); then eastward along County Rd. 688 to its intersection with County Rd. 689 (Berlin-Crosskeys Rd.); then northeast along County Rd. 689 to its intersection with Rt. 73 at Berlin; then south on Rt. 73 to its intersection with Rt. 30; then southeast along Rt. 30 to its intersection with Rt. 206; then north on Rt. 206 to its intersection with Great Swamp Branch

(just past the intersection of Rt. 206 and Middle Rd.); then eastward along Great Swamp Branch to its intersection with Nescochague Creek; then eastward along Nescochague Creek to Nescochague Lake, at Pleasant Mills; then westward along the north and western shore of Nescochague Lake to its intersection with Hammonton Creek; then westward along Hammonton Creek to its intersection with Rt. 30 (White Horse Pike), near Hammonton; then southeast on Rt. 30 to its intersection with Weymouth Rd. (Rts. 640-559); then southward on Weymouth Rd. to its intersection with the Atlantic City Expressway; then west along the Atlantic City Expressway to its intersection with Eighth St.; then south along Eighth St. to its intersection with Rt. 322; then westward on Rt. 322 to its intersection with Rt. 54; then southward on Rt. 54 to its intersection with Rt. 40 near Buena, the point of beginning. Zone 65 is excluded from Zone 25. The Zone 25 outside boundary remains the same. However, the total Zone 25 area is reduced due to the expansion of Zone 65 which lies within Zone 25. See boundary description for Zone 65.

Zone 26: That portion of Atlantic County lying within a continuous line beginning at the intersection of Rts. 40 and 54 near Buena; then southeast on Rt. 40 to its intersection with Rt. 50; then north on Rt. >



L&H Woods & Water

OPEN 7 DAYS A WEEK!

BROWNING FULL LINE DEALER

BROWNING
The Best There Is

MAXUS X-BOLT CITORI

L&H Woods & Water
2045 Rt. 35 · Wall, NJ · 732.282.1812

www.LHWoodsandWater.com


How Far Can Your Firearm Shoot?

12 gauge maximum distances for shot sizes:

No. 6	708 feet or 236 yards
No. 0	1,845 feet or 615 yards
No. 00	1,895 feet or 632 yards
Slug, 1 oz.	3,780 feet or 1,260 yards

Sporting Arms and Ammunition Manufacturers' Institute, Inc.
Safety Series, 1075 Post Road, Riverside, CT 06878

* Distances above are with barrel held at an elevated angle for maximum trajectory. Always consider the angle of your barrel when shooting.
* Never shoot at or over the crest of a hill.
* All distances are approximate and can vary depending on the shotgun's gauge/choke and ammunition used.



Excalibur
DEHYDRATORS

Here's a **FAST & EASY** way to Preserve Your Deer Meat and other Wild Game!

Make your own delicious jerky in **JUST 6 hours!**

30-DAY RISK-FREE TRIAL

For **FREE** details call toll-free **TODAY!**
1-800-875-4254

www.drying123.com

50 to its intersection with Rt. 322; then east on Rt. 322 to its intersection with Cologne Ave.; then north on Cologne Ave. to its intersection with Duerer St.; then east on Duerer St. to its intersection with Rt. 575; then northeast on Rt. 575 to its intersection with the Garden State Parkway; then north along the Garden State Parkway to its intersection with the Mullica River and the Atlantic-Burlington County line; then northwest along the south bank of the Mullica River to its intersection with Rt. 542 at Pleasant Mills; then west on Rt. 542 to its intersection with Nescochaque Creek at Pleasant Mills; then south along the west bank of Nescochaque Creek to Nescochaque Lake; then southwest along the western bank of Nescochaque Lake to its intersection with Hammonton Creek; then westward along Hammonton Creek to its intersection with Rt. 30 (White Horse Pike), near Hammonton; then south on Rt. 30 to its intersection with Weymouth Rd. (Rts. 640-559); then south on Weymouth Rd. to its intersection with the Atlantic City Expressway; then northwest along the Atlantic City Expressway to its intersection with Eighth St.; then southwest along Eighth St. to its intersection with Rt. 322 (Black Horse Pike); then northwest along Rt. 332 to its intersection with Rt. 54; then southwest along Rt. 54 to its intersection with Rt. 40 at Buena, the point of beginning. The

Atlantic County Park System (Zone 61) is excluded from Zone 26.

Zone 27: That portion of Cumberland and Salem counties lying within a continuous line beginning at the intersection of Rts. 77 and 40 at Pole Tavern; then northwest on Rt. 40 to its intersection with Rt. 48; then west on Rt. 48 through Penns Grove to the Delaware River; then south along the east bank of the Delaware River to its intersection with the Salem Canal at Deepwater; then eastward along the south bank of the Salem Canal to its intersection with the Salem River; then southward along the west bank of the Salem River to its intersection with Rt. 49 at Salem; then southeast on Rt. 49 to its intersection with Salem County Rt. 667 (Pecks Corner-Cohansey Rd.) at Pecks Corner; then eastward along Rt. 667 to its intersection with Rt. 540; then east along Rt. 540 to its intersection with Rt. 77; then north on Rt. 77 to its intersection with Rt. 40 at Pole Tavern, the point of beginning.

Zone 28: That portion of Gloucester, Cumberland and Salem counties lying within a continuous line beginning at the intersection of Rts. 77 and 40 at Pole Tavern; then east on Rt. 40 to its intersection of Rt. 47 at Malaga; then south on Rt. 47 to its intersection of Rt. 49 in Millville; then west on Rt. 49 to its intersection

with Salem County Rt. 667 (Pecks Corner-Cohansey Rd.) at Pecks Corner; then eastward along Rt. 667 to its intersection with Rt. 540; then east on Rt. 540 to its intersection with Rt. 77; then north on Rt. 77 to Pole Tavern, the point of beginning.

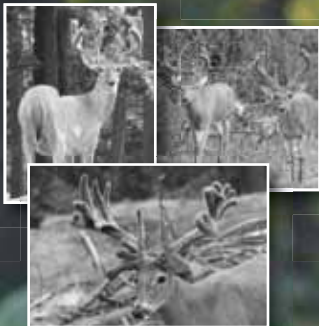
Zone 29: That portion of Salem and Cumberland counties lying within a continuous line beginning with the intersection of Rts. 77 and 49 at Bridgeton; then northwest on Rt. 49 to its intersection with Alloway Creek at Quinton; then southwest along the northern bank of the Alloway Creek to its intersection with the Delaware River; then south along the east bank of the Delaware River to the Cohansey River; then along the northwest bank of the Cohansey River to Bridgeton, the point of beginning.

Zone 30: That portion of Cumberland County lying within a continuous line beginning at Fairton on the Cohansey River; then west along the south bank of the Cohansey River to the Delaware River; then southeast along the east bank of the Delaware River to the Maurice River; then north along the west bank of the Maurice River to Haleyville-Mauricetown Rd. (County Rd. 676); then west on Haleyville-Mauricetown Rd. to its intersection with the Central

(continued on page 40)

MOUNTAIN TRAIL WHITETAILS BOWHUNTING PRESERVE

Hunt On 100 Wooded Acres In Warren County,
Home To The Biggest Bucks In New Jersey!



Tim Matthews
(908) 310-0369
Matthews@embarqmail.com

Management Hunts (Eight (8) points or less, scoring less than 140")	\$1450 trophy fee
Gold Hunt — Any Buck in the Preserve Over 200", Fully-Guided, Sept. - Jan.	\$6400 trophy fee
Guided Turkey Hunts	\$300 per day

Any Buck in the Preserve Under 200", Semi-Guided	
September	\$4400 trophy fee
October	\$3900 trophy fee
November	\$3400 trophy fee
December	\$2900 trophy fee
January	\$2400 trophy fee

Hunts are \$250 per day (2 day minimum).
If successful, a trophy fee will be charged
based on the type of hunt selected in
addition to the daily fee.

WWW.MOUNTAINTRAILWHITETAILS.COM

Deer shot on a preserve are not eligible for Boone & Crockett, Pope & Young or New Jersey's Outstanding Deer Program.

Deer Management Zone

BOUNDARY DESCRIPTIONS

(continued from page 39)

Railroad of New Jersey (C.R.R.N.J.); then west along the C.R.R.N.J. line to its intersection with Newport-Centre Grove Rd. (County Rd. 629); then southwest on Newport-Centre Grove Rd. to its intersection with Rt. 553, then northwest on Rt. 553 to Fairton, the point of beginning.

Zone 31: That portion of Cumberland County lying within a continuous line beginning at the intersections of Rts. 77 and 49 at Bridgeton; then east on Rt. 49 to the Maurice River near Millville; then south along the west bank of the Maurice River near Millville; then south along the west bank of the Maurice River to Buckshutem Creek; then west on the north bank of Buckshutem Creek to its intersection with Buckshutem Rd. (County Rd. 670); then northwest on Buckshutem Rd. to its intersection with Cedarville Rd. (County Rd. 610); then southwest on Cedarville Rd. to its intersection with Newport Centre Grove Rd. (County Rd. 629); then southwest on Newport Centre Grove Rd. to its intersection with Rt. 553; then northwest along Rt. 553 to the Cohanse River at Fairton; then north on the east bank of the Cohanse River to Bridgeton, the point of beginning.

Zone 32: Not designated.

Zone 33: Not designated.

Zone 34: That portion of Cumberland and Cape May counties lying within a continuous line beginning at the intersection of Rt. 47 and Rt. 548 in Port Elizabeth; then east on Rt. 548 to its intersection with Rt. 49; then northwest on Rt. 49 to its intersection with the Tuckahoe River at Head of River; then eastward along the south bank of the Tuckahoe River and Atlantic-Cape May County line to Great Egg Harbor Bay; then continuing eastward along the Atlantic-Cape May County line to the Atlantic Ocean at the Great Egg Harbor Inlet; then southwest along the Atlantic Ocean to Delaware Bay; then north and west along the east bank of Delaware Bay to the Maurice River; then north along the east bank of the Maurice River to Port Elizabeth and Rt. 548, the point of beginning.

Zone 35: That portion of Salem and Gloucester counties lying within a continuous line beginning at the east bank of the Delaware River at Penns Grove; then southeast on Rt. 48 to its intersection with Rt. 40; then southeast on Rt. 40 to its intersection with Rt. 553; then north on Rt. 553 to the intersection with Rt. 610 (Aura Rd.); then southeast on Rt. 610 to its intersection with Rt. 47 at Clayton; then north on Rt. 47 to its intersection with County Rt. 635 (Lambs Rd.) at Glassboro; then west on Rt. 635 to its intersection with Mantua Creek at Glassboro; then northwest along the Mantua Creek to the Delaware River; then southwest along the east bank of the Delaware River, to Penns Grove, the point of beginning. Chester and Mond's Islands lying in the Delaware River are in this zone.

Zone 36: That portion of Bergen, Hudson, Essex, Passaic, Morris, Union, Somerset and Middlesex counties lying within a continuous line beginning at the intersection of Rt. 202 and the New York State line near Suffern; then south on Rt. 202 to its intersection with Rt. 287 in Oakland; then south along Rt. 287 to its intersection with Rt. 23; then Rt. 23 northwest to its intersection with Rt. 618; then south along Rt. 618 to its intersection with Rockaway Valley Rd.; then southwest along Rockaway Valley Rd. to its intersection with Diamond Spring Rd.; then south along Diamond Spring Rd. with West Main St. in Denville; then south along West Main St. to its intersection with Rt. 80; then east on Rt. 80 to its intersection with Rt. 511; then south on Rt. 511 to its intersection with Rt. 510; then west on Rt. 510 to its intersection with Rt. 124 at Morristown; then southeast on Rt. 124 to its intersection with Rt. 82; then southeast along Rt. 82 to its intersection with Rt. 22; then southwest on Rt. 22 to its intersection with Rt. 287 near Somerville; then southeast on Rt. 287 to its intersection with Rt. 18 near South Bound Brook; then southeast on Rt. 18 to its intersection with the New Jersey Turnpike; then north on the Turnpike to its intersection with the Raritan River; then east along the north bank of the Raritan River to Raritan Bay and the New York State line; then north along the state line to Arthur Kill and west bank of the Hudson River; then west along the New Jersey-New York border to the point of beginning near Suffern.

Zone 37: That portion of the Dix-McGuire section of Joint Base McGuire-Dix-Lakehurst, U.S. Air Force, that formerly consisted of Fort Dix Military Reservation, U.S. Dept. of the Army, designated as open for deer hunting, lying within Burlington and Ocean counties.

Zone 38: That portion of Great Swamp National Wildlife Refuge, U.S. Dept. of the Interior, designated as open for deer hunting, lying within Morris County.

Zone 39: That portion of Naval Weapons Station Earle, U.S. Department of the Navy designated as open for deer hunting, lying within Monmouth County.

Zone 40: That portion of Naval Weapons Station Earle, Waterfront Section, U.S. Department of the Navy, designated as open for deer hunting, lying within Monmouth County.

Zone 41: That portion of Hunterdon and Mercer counties lying within a continuous line beginning at the intersection of Rt. 31 and Rt. 202 at Ringoes; then south along Rt. 31 to its intersection with Rt. 546 at the Pennington traffic circle; then west along Rt. 546 to the Delaware River; then north along east bank of Delaware River to its intersection with Rt. 202; then north along Rt. 202 to the point beginning at Ringoes.

Zone 42: That portion of Atlantic County lying within a continuous line beginning at the intersection of the south bank of the Mullica River and the

Garden State Parkway; then south along the Garden State Parkway to its intersection with Rt. 575; then southwest along Rt. 575 to its intersection with Duerer St.; then west on Duerer St. to its intersection with Cologne Ave.; then south on Cologne Ave. to its intersection with Rt. 322; then west on Rt. 322 to its intersection with Rt. 50; then south on Rt. 50 to its intersection with the Great Egg Harbor River at Mays Landing; then south along the east bank of the Great Egg Harbor River to the Atlantic-Cape May County line in Great Egg Harbor Bay; then eastward along the Atlantic-Cape May County line to its intersection with the Atlantic Ocean at the Great Egg Harbor Inlet; then northeast along the Atlantic Ocean to Great Bay; then west along the south shore of Great Bay to the confluence of the Mullica River; then west along the south bank of the Mullica River to its intersection with the Garden State Parkway, the point of beginning. The Edwin B. Forsythe National Wildlife Refuge (Zones 56 and 57), the Atlantic County Park System (Zone 61) and the lands (excluding Laurel Memorial Park Cemetery), roads, right of ways and easements within the contiguous boundary of the Federal Aviation Administration William J. Hughes Technical Center (Zone 66) are excluded from Zone 42.

Zone 43: That portion of Cumberland County lying within a continuous line beginning at the intersection of Buckshutem Rd. (County Rd. 670) and Cedarville Rd. (County Rd. 610); then southwest on Cedarville Rd. to its intersection with Newport Centre Grove Rd. (County Rd. 629); then southwest on Newport Centre Grove Rd. to its intersection with the Central Railroad of New Jersey (C.R.R.N.J.); then east on the C.R.R.N.J. line to its intersection with Haleyville Rd. (County Rd. 676) at Mauricetown Station; then east on Haleyville Rd. to its intersection with the Maurice River at Mauricetown; then north along the west bank of the Maurice River to the north bank of Buckshutem Creek at Laurel Lake; then west along the north bank of Buckshutem Creek to Buckshutem Rd.; then northwest on Buckshutem Rd. to its intersection with Cedarville Rd., the point of beginning.

Zone 44: Not designated.

Zone 45: That portion of Cumberland, Atlantic and Cape May counties lying within a continuous line beginning at the intersection of Broad St. (Rt. 552 spur) and Delsea Drive (Rt. 47); then northeast along Rt. 552 spur to Rt. 552; then continuing northeast along Rt. 552 to its intersection with the Tuckahoe River at Milmay; then south along the west bank of the Tuckahoe River to its intersection with Rt. 49 at Hunter's Mill; then southeast on Rt. 49 to its intersection with Rt. 548; then west on Rt. 548 to its intersection with Delsea Drive (Rt. 47) and the Manumuskin River in Port Elizabeth; then west along the south bank of Manumuskin River to its intersection with the Maurice River; then north along the east bank of the Maurice River to its intersection with Rt. 49 in Millville; then east on Rt. 49 to its intersection with Delsea Drive (Rt. 47); then ▶

north on Rt. 47 to its intersection with Broad St. (Rt. 552 spur), the point of beginning.

Zone 46: That portion of Atlantic County lying within a continuous line beginning at the intersection of Rt. 49 and the Tuckahoe River at Hunter's Mill; then southeast along Rt. 49 to its intersection with the Tuckahoe River and the Atlantic-Cape May County line at Head of River; then eastward along the north bank of the Tuckahoe River to Great Egg Harbor Bay and the Egg Harbor Township line on the Egg Harbor River; then northwest along the west bank of the Egg Harbor River to its intersection with Rt. 40 at Mays Landing; then west on Rt. 40 to its intersection with Estell Ave; then south on Estell Ave. to its intersection with Rt. 552 then southwest on Rt. 552 to its intersection with the Tuckahoe River at Milmay; then south along the east bank of the Tuckahoe River to its intersection with Rt. 49 at Hunter's Mill the point of beginning. The Atlantic County Park System (Zone 61) is excluded from Zone 46.

Zone 47: That portion of Gloucester, Atlantic and Cumberland counties lying within a continuous line beginning at the intersection of Rts. 47 and 40 at Malaga; then southeast on Rt. 40 to its intersection with Estell Ave; then south on Estell Ave to its

intersection with Rt. 552; then southwest on Rt. 552 to spur 552; then west on spur 552 to its intersection with Rt. 47 at Millville; then north on Rt. 47 to Malaga, the point of beginning.

Zone 48: That portion of Burlington County lying within a continuous line beginning at the intersection of the New Jersey Turnpike and Rt. 38 near Moorestown; then east along Rt. 38 to its intersection with Rt. 530; then east along Rt. 530 along the Pemberton by-pass to its intersection with the southern boundary of the Dix-McGuire section of Joint Base McGuire-Dix-Lakehurst; then northward along the western Dix-McGuire section of Joint Base McGuire-Dix-Lakehurst boundary to its intersection with County Rd. 670; then east on County Rd. 670 to its intersection with Rt. 545 at Wrightstown; then northwest on Rt. 545 which becomes Farnsworth Ave.; then continuing northwest on Farnsworth Ave. to its intersection with W. Burlington St.; then southwest on W. Burlington St. to its intersection with Interstate 295; then north on Interstate 295 to its intersection with Crosswicks Creek at Bordentown; then west along the south bank of Crosswicks Creek to its intersection with the Delaware River at Bordentown; then southwest along the east bank of the Delaware River to Rt. 541 at the City of Burlington; then southeast

along Rt. 541 to its intersection with Interstate 295; then southwest along Interstate 295 to its intersection with Rancocas Creek; then east along Rancocas Creek to its intersection with the New Jersey Turnpike; then southwest along the New Jersey Turnpike to its intersection with Rt. 38, the point of beginning. New Bold and Burlington Islands lying in the Delaware River are in this zone.

Zone 49: That portion of Gloucester, Camden and Burlington counties lying within a continuous line beginning at the mouth of Mantua Creek on the Delaware River; then northeast along the east bank of the Delaware River to Rt. 541 at the City of Burlington; then southeast along Rt. 541 to its intersection with Interstate 295; then southwest along Interstate-295 to its intersection with Rancocas Creek; then east along the Rancocas Creek to its intersection with the New Jersey Turnpike; then southwest along the New Jersey Turnpike to its intersection with Rt. 73; then south along Rt. 73 to its intersection with County Rd. 689 (Cross Keys Rd.) at Berlin; then southwest along County Rd. 689 to its intersection with County Rd. 688 Turnersville-Hickstown Rd.); then west along County Rd. 688 to its intersection with County Rd. 705; then northwest along County Rd. 705 (County

(continued on page 42)

BULLET HOLE



78 Rutgers Street · Belleville, NJ · 07109 • www.BulletholeNJ.com • 973-759-3968



We can accommodate High-Powered Rifles

**Our pro shop is filled with only the best!
We have a full line of rifles, handguns and shotguns!**

We stock most models and brands. If you cannot find the gun of your dreams, we will be glad to order it! Our heated and air-conditioned, indoor 10-port shooting facility is a great place to spend some time with family and friends. Our attentive staff is always willing to help make your shooting experience an enjoyable one.

GUNSMITH SERVICES · NEW JERSEY & PENNSYLVANIA HUNTING LICENSES

Deer Management Zone

BOUNDARY DESCRIPTIONS

(continued from page 41)

House Rd.) to its intersection with County Rd. 635 (Grenlode-Hurfville Rd.); then southwest on County Rd. 635 to its intersection with Mantua Creek; then northwest along Mantua Creek to its mouth at the Delaware River, the point of beginning. Petty Island lying in the Delaware River is in this zone.

Zone 50: That portion of Monmouth and Middlesex counties lying within a continuous line beginning at the intersection of the New Jersey Turnpike and Rt. 522 near Jamesburg; then southeast on Rt. 522 to the intersection with Rt. 537 at Freehold; then southwest on Rt. 537 to the intersection with business Rt. 33; then east on Rt. 33 to the intersection with the western edge of the fenced boundary of the Earle Naval Weapons Depot; then north and east along the fenced boundary of the Earle Depot to the intersection of County Rt. 38 (Wayside Rd.) and Rt. 547 at the most eastern point of the fenced boundary of Naval Weapons Station-Earle; then northeast on Rt. 547 to the intersection with the Garden State Parkway; then north on the Garden State parkway to the intersection with Rt. 36 near Eatontown; then east on Rt. 36 to the Atlantic Ocean; then north along the Atlantic coastline to the Raritan Bay; then south and west along the southern shore of Raritan Bay to the Raritan River; then continuing west along the south bank of the Raritan River to the intersection with the New Jersey Turnpike; then southwest along the New Jersey Turnpike to the intersection with Rt. 522, the point of beginning. Monmouth Battlefield State Park (Zone 64), and Naval Weapons Station Earle (Zones 39 and 40), are excluded from this zone.

Zone 51: That portion of Monmouth and Ocean counties lying within a continuous line beginning at the intersection of Rt. 547 and Rt. 571 near Lakehurst; then southeast along Rt. 571 to the intersection with the Garden State Parkway; then south on the Garden State Parkway to its intersection with Rt. 72 near Manahawkin; then east along Rt. 72 to the Atlantic Ocean at Ship Bottom; then north along the Atlantic coastline to the intersection with Rt. 36 in Long Branch; then west on Rt. 36 to the intersection with the Garden State Parkway near Eatontown; then south on the parkway to the intersection with 547; then south on Rt. 547 to the intersection with county Rt. 38 (Wayside Rd.) at the eastern fenced boundary of Naval Weapons Station-Earle; then south along the eastern fenced boundary of Naval Weapons Station-Earle to the intersection with Rt. 34; then south on Rt. 34 to the intersection with Tinton Falls Rd. and Rt. 33; then south on Tinton Falls Rd. to the intersection with Rt. 547 (Asbury Rd.); then south on Rt. 547 through Farmingdale to the intersection with Rt. 571, the point of beginning.

Zone 52: Not designated.

Zone 53: That portion of the Lakehurst section of Joint Base McGuire-Dix-Lakehurst, U.S. Air Force, that formerly consisted of Lakehurst Naval Air Engineering

Center, U.S. Department of the Navy, designated as open for deer hunting, lying within Ocean county.

Zone 54: Those portions of Picatinny Arsenal, U.S. Department of the Army, Installation Management Agency (IMA), designated as open for deer hunting, lying within Morris County.

Zone 55: That portion of Gloucester County lying within a continuous line beginning at the intersection of Rts. 47 and 322 at Glassboro; then east along Rt. 322 (County Rt. 536) to its intersection with Rt. 655 (Fries Mill Rd.); then south on Rt. 655 to its intersection with Rt. 610 (Academy Ave.); then west on Rt. 610 to its intersection with Rt. 47 (Delsea Drive) at Clayton; then north along Rt. 47 to its intersection with Rt. 322 at Glassboro, the point of beginning.

Zone 56: That portion of Edwin B. Forsythe National Wildlife Refuge, U.S. Department of the Interior, located south of Stoney Hill Rd., designated as open for deer hunting, lying within Atlantic County.

Zone 57: That portion of Edwin B. Forsythe National Wildlife Refuge, U.S. Department of the Interior, located north of Stoney Hill Rd. and south of the Mullica River, designated as open for deer hunting, lying within Atlantic County.

Zone 70: Those portions of Edwin B. Forsythe National Wildlife Refuge, including the Barnegat Division, U.S. Department of the Interior, located north of the Mullica River and south of Rt. 72, designated as open for deer hunting, lying within Burlington and Ocean counties.

Zone 58: Those portions of Edwin B. Forsythe National Wildlife Refuge, including the Barnegat Division, U.S. Department of the Interior, located north of Rt. 72, designated as open for deer hunting, lying within Ocean county.

Zone 59: Not designated.

Zone 60: Not designated.

Zone 61: Those portions of the Atlantic County Park System, County of Atlantic, designated as open for deer hunting, lying within Atlantic County.

Zone 62: Not designated.

Zone 63: That portion of Salem County lying within a continuous line beginning at the intersection of the Salem Canal and the Delaware River at Deepwater; then eastward along the south bank of the Salem Canal to its intersection with the Salem River; then southward along the west bank of the Salem River to its intersection with Rt. 49 at Salem; then southeastward on Rt. 49 to its intersection with Alloway Creek at Quinton; then southwest along the northern bank of the Alloway Creek to its intersec-

tion with the Delaware River; then northward along the east bank of the Delaware River and New Jersey State line to Finns Point and Fort Mott State Park; then northward along the New Jersey State line to the Delaware River; then northwest along the east bank of the Delaware River; then northwestward along the east bank of the Delaware River and New Jersey State line to its intersection with the Salem Canal at Deepwater, the point of beginning.

Zone 64: That portion of Monmouth Battlefield State Park, designated as open for deer hunting, lying within Monmouth County.

Zone 65: That portion of Camden and Gloucester counties lying within a continuous line beginning at the intersection of Rt. 322 and County Rd. Rt. 659 (Malaga-New Brooklyn Rd.) in Monroe Township, Gloucester County; then northeast along Rt. 659 to its intersection with County Rd. Rt. 536 at New Brooklyn; then northward along Rt. 536 to its intersection with County Rd. Rt. 720 (Brooklyn-Blue Anchor Rd.); then southeast on Rt. 720 to its intersection with Rt. 73 near Blue Anchor; then southward along Rt. 73 to its intersection with Piney Hollow Rd.; then southwest along Piney Hollow Rd. to its intersection with Dutch Mill Rd. then west along Dutch Mill Rd. to its intersection with County Rt. 557 (Tuckahoe Rd.); then northwest on Rt. 557 to its intersection with County Rt. 659 (Malaga Rd.); then north on Rt. 659 to its intersection with County Rt. 633 (Blue Bell Rd.) then south on Rt. 633 to its intersection with County Rt. 538 (Coles Mill Rd.); then east along Rt. 538 to its intersection with Rt. 322; then west along Rt. 322 to its intersection with County Rt. 659, the point of beginning.

Zone 66: That portion of Atlantic County including lands, roads, right of ways and easements within the contiguous boundary of the Federal Aviation Administration William J. Hughes Technical Center, excluding Laurel Memorial Park Cemetery. Lands open for deer hunting only and persons authorized to hunt deer on the facility shall be determined by the Federal Aviation Administration William J. Hughes Technical Center, the administrative agency.

Zone 67: That portion of High Point State Park, located north and east of Deckertown Turnpike (Rt. 650), designated as open to hunting, lying within Sussex County.

Zone 68: That portion of the Franklin Parker Preserve and Four Mile Spring Preserve, designated as open to deer hunting, lying within Woodland Township, Burlington County.

Zone 70: Those portions of Edwin B. Forsythe National Wildlife Refuge, including the Barnegat Division, U.S. Department of the Interior, located north of the Mullica River and south of Rt. 72, designated as open for deer hunting, lying within Burlington and Ocean counties. 🍌

*Hunting · Fishing
Paintball · Specialty Shop*



SPORTSMAN'S RENDEZVOUS

Remington



**Large Selection of Bows,
Crossbows and Firearms!**

NJ HUNTING & FISHING LICENSES
TURKEY CHECK IN STATION

FIREARMS BOUGHT & SOLD
COMPOUND BOWS TRADED IN
BOW REPAIRS • LIVE BAIT • **LOW PRICES**

\$10 OFF

any purchase of \$100 or more.

Valid on merchandise only. Expires December 31, 2013.

SPORTSMAN'S RENDEZVOUS

**174 HWY 31 • FLEMINGTON, NJ 08822 • (908) 788-5828
WWW.SPORTSMANSRENDEZVOUS.COM**