

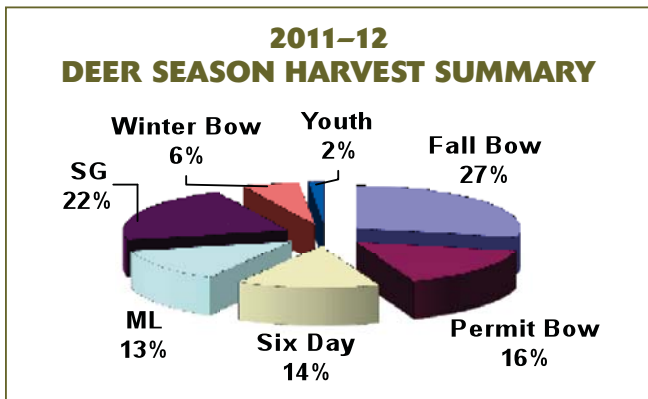
2011-2012 Deer Harvest

SUMMARIES

NEW JERSEY DEER HUNTERS harvested 50,109 deer during the 2011–2012 season between September 10, 2011 and February 18, 2012. The harvest for this year's deer season is 9.6 percent lower than the 55,404 deer taken in 2010. Harvest reductions were due in part to the addition of five zones to Antler Point Restrictions, a good mast crop in the southern portion of the state and an outbreak of Epizootic Hemorrhagic Disease. The antlerless portion of the 2011 harvest was 31,533 deer, down 11 percent from 2010. The antlered portion of the 2011 harvest was 18,575 deer, down almost seven percent from 2010. 🍖

The 2011–12 Deer Harvest per Square Mile of Deer Range

Deer Mgt. Zone	Deer range (sq. mi.)	Antlered Buck Harvest (per sq. mi.)	Total Deer Harvest (per sq. mi.)
1	75	3.6	6.0
2	149	5.2	14.5
3	153	2.2	4.3
4	71	4.3	7.5
5	215	5.9	14.8
6	176	2.9	7.0
7	103	7.0	19.1
8	203	7.1	20.7
9	52	5.7	18.6
10	110	9.4	24.4
11	68	9.0	26.7
12	152	6.9	21.9
13	109	3.6	15.7
14	165	4.4	11.6
15	86	5.0	15.6
16	91	4.8	12.2
17	90	4.7	12.7
18	70	3.2	4.9
19	159	4.3	10.8
21	192	1.5	2.2
22	34	2.2	4.3
23	178	1.8	2.5
24	169	1.0	1.4
25	164	3.0	8.5
26	195	2.7	4.1
27	103	2.8	9.7
28	125	2.5	8.7
29	64	4.4	15.7
30	43	1.8	6.7
31	40	1.1	6.4
34	97	1.3	3.5
35	171	3.0	9.7
36	124	2.3	7.7
37	20	4.8	12.9
38	12	1.8	3.6
39	15	3.3	8.3
40	1	2.0	33.0
41	39	6.1	20.2
42	90	1.7	4.4
43	27	3.6	4.8
45	65	3.0	4.2
46	79	2.0	2.9
47	54	1.1	5.2
48	86	4.5	12.9
49	65	2.8	10.1
50	137	4.5	13.6
51	162	1.5	3.6
53	8	1.1	4.4
54	10	4.0	6.2
55	6	5.2	11.8
56	1	3.0	35.0
57	1	4.0	17.0
58	3	1.3	10.7
61	5	1.2	4.0
63	21	3.2	8.5
64	3	5.0	15.0
65	17	5.9	9.9
66	3	4.0	10.0
67	15	0.7	5.3
68	17	2.5	4.2
70	1	2.0	4.0
State	4941	3.8	10.1



2011–12 Deer Harvest by County and Season

County	Total	Fall Bow	Permit Bow	Six-day Firearm	Permit M/L	Permit Shotgun	Winter Bow	Youth Days
ATLANTIC	1,927	281	252	520	364	340	121	49
BERGEN	100	45	23	2	8	9	11	2
BURLINGTON	4,248	887	621	820	576	1,100	169	75
CAMDEN	822	243	167	126	86	121	67	12
CAPE MAY	282	45	67	34	67	17	36	16
CUMBERLAND	2,212	501	339	343	419	446	112	52
ESSEX	152	63	31	1	16	2	39	
GLOUCESTER	2,282	591	424	242	317	572	93	43
HUNTERDON	8,021	2,619	1,131	1,091	1,074	2,005	5	96
MERCER	2,046	457	220	241	130	575	397	26
MIDDLESEX	1,201	358	178	106	80	355	111	13
MONMOUTH	3,979	1,400	890	374	282	934	63	36
MORRIS	3,939	1,524	726	395	278	650	317	49
OCEAN	2,146	444	319	409	228	299	415	32
PASSAIC	578	127	102	74	130	10	112	23
SALEM	2,701	644	471	254	612	627	26	67
SOMERSET	3,369	1,353	623	264	249	760	97	23
SUSSEX	5,055	1,374	770	900	984	663	279	85
UNION	270	4	1	1	—	90	174	—
WARREN	4,652	1,267	651	820	609	1,235	2	68
Unknown	127	—	1	3	—	5	118	—
Totals	50,109	14,227	8,007	7,020	6,509	10,815	2,764	767

2011–12 Total Deer Harvest by Season and Zone

DMZ	Total	Fall Bow	Permit Bow	Youth Days	Six-day Firearm	Permit Muzzleloader	Permit Shotgun	Winter Bow
1	449	104	74	13	122	113	1	22
2	2,167	628	362	41	321	383	377	55
3	659	161	122	30	111	187	18	30
4	534	103	85	6	150	168	5	17
5	3,176	834	484	45	600	426	726	61
6	1,235	485	196	30	207	153	46	118
7	1,965	586	241	20	297	192	562	67
8	4,206	1388	596	49	518	450	994	211
9	966	391	187	9	78	49	155	97
10	2,681	820	354	29	381	336	629	132
11	1,818	498	221	20	251	274	502	52
12	3,331	1052	492	41	357	359	847	183
13	1,706	766	359	5	46	55	268	207
14	1,920	590	303	17	238	103	489	180
15	1,340	403	234	15	111	107	408	62
16	1,114	357	249	11	164	101	175	57
17	1,145	249	139	18	190	87	432	30
18	342	76	45	4	123	58	1	35
19	1,711	388	255	27	296	204	471	70
21	428	65	75	13	155	77	15	28
22	146	33	32	13	26	23	7	12
23	441	66	63	11	191	87	3	20
24	236	27	45	9	98	39	4	14
25	1,402	352	228	25	155	177	429	36
26	805	104	101	33	290	192	28	57
27	996	229	166	20	89	222	247	23
28	1,083	305	174	24	92	192	231	65
29	1,007	220	155	21	94	239	257	21
30	287	39	53	9	33	68	65	20
31	254	76	34	5	20	43	67	9
34	337	55	78	16	41	83	19	45
35	1,652	428	315	43	152	303	326	85
36	955	351	182	8	40	62	158	154
37	258	83	61	2	7	83	7	15
38	43	—	—	—	—	26	16	1
39	125	14	15	1	10	22	59	4
40	33	5	—	—	—	—	—	28
41	786	197	78	16	101	68	306	20
42	398	79	58	6	71	58	122	5
43	129	23	20	3	59	9	—	15
45	274	23	28	9	124	60	14	16
46	228	28	32	7	97	41	4	19
47	282	59	40	2	23	32	101	25
48	1,107	212	125	12	160	116	419	63
49	658	163	142	3	22	18	133	177
50	1,860	770	443	10	116	106	353	62
51	587	187	152	4	63	41	137	3
53	35	8	11	—	2	7	5	2
54	62	11	18	—	13	9	6	5
55	71	23	12	2	11	6	11	6
56	35	—	—	—	—	—	28	7
57	17	—	2	—	—	3	2	9
58	32	—	9	—	—	3	19	1
61	20	—	2	—	3	5	8	2
63	178	42	28	5	20	47	33	3
64	45	—	—	—	14	—	31	—
65	168	36	32	3	52	42	3	—
66	30	2	4	—	—	1	23	—
67	79	—	—	—	—	79	—	—
68	71	13	9	2	20	14	12	1
70	4	—	2	—	—	1	1	—
Unknown	0	—	—	—	—	—	—	—
Totals	50,109	14,207	8,022	767	7,025	6,509	10,815	2,764

AMB DEER PROCESSING INC.



The problems:

- Poor quality—processing by amateurs
- High cost
- Are you getting the cuts you want?
- Are you getting all your meat back?
- Are you getting the same deer back?*

The AMB Deer processing solution:

- Reasonable price of \$85.00**
- Skilled professional butchers
- Processed the way you request
- 90% boned out
- Properly wrapped and labeled for the freezer

Woodbridge (732) 750-5034

Note: A deer tag is absolutely required for our processing service.

**Discounts Available
for all Active & Reserve
Military Personnel**

*Does not include smoked products **150 lbs. and down

57 West Deer Processing

220 D Belview Road
Phillipsburg, NJ

908-619-0195

Regular Cuts \$75
Little Deer \$60

**Vacuum Packed
Frozen**

Custom Meats

Hot Sticks
Bologna
Kielbasa
Smoked Sausage
Pork Roll
Hot Dogs

LIVING THE DREAM

By Jim Sciascia, Chief,
Office of Information and Education

Hunting and Fishing at Age 98

As the Information and Education Chief for Fish and Wildlife, many of the constituent letters sent to the Division eventually find their way to my desk. Over the last 12 years I've enjoyed reading many letters recounting successful hunts or fishing trips with youngsters, felt fulfilled by the letters thanking us for a job well done and learned a lot about things we could do better from the poison pen letters. But last July, I received the first letter that truly made me say, "WOW!!!!"

That handwritten letter was from Frank Shepherd and it was about his uncle, Frank Harmis who was about to turn 98 years old. Living to that age is unusual in itself, but the WOW came after I learned that not only has Mr. Harmis hunted and fished in New Jersey all his life but at age 98 is still hunting and fishing. It was not too long after receiving the letter that a meeting was arranged with 'Uncle Frank' to talk about his nearly 100 years of hunting and fishing in New Jersey.

Small game, furbearers and waterfowl were certainly much more abundant in the early 1900s than they are today but the same was not true for white-tailed deer.

When we first met I was shocked by how physically and mentally fit he is at 98 years old. When I tell you he still drives everywhere he needs to go including hunting and fishing, lives by himself and still cooks perhaps it illustrates how exceptionally well he has aged. This man has been in the hospital once, and that was to have his gall bladder removed at age 97.

Frank Harmis was born near South River, New Jersey in 1913, just three years after the first resident hunting license was issued in the Garden State. He and his family weathered the Depression which struck when he was 16. Several years later he joined the Civilian Conservation Corps and spent time working and hunting at CCC camps in Idaho and California. When he returned to New Jersey he went to technical school to land a millwright job

at National Lead where he worked for 39 years. He built his own house and raised his family in East Brunswick where he still lives today.

Frank started fishing, hunting and trapping under the guidance of his older brother when he was about seven years old and began hunting and trapping by himself at the ripe old age of 10. His passion for the outdoors was ignited while growing up in Middlesex County which was rural and predominantly agricultural land and unspoiled marshes that supported abundant fish, waterfowl, wild pheasants and quail, rabbits and furbearers. He loved to trap especially for red fox, which were also plentiful as were the mink, raccoons and muskrats he caught on the banks of the Raritan River.

Small game, furbearers and waterfowl were certainly much more abundant in the early 1900s than they are today but the same was not true for white-tailed deer. The New Jersey deer population had been reduced to dangerously low levels by the time Frank Harmis was born and when he was two years old, the statewide deer harvest was a paltry 491 deer. He hunted for 20 years before he took his first deer from Stokes State Forest in 1941 at age 28. He told stories about a deer hunting camp in Bamber Lake in Ocean County where he hunted with about 15 friends and relatives for a decade beginning in the mid 1940s. They considered it a good year if one hunter in their party bagged a deer.

Over the years, Frank has taken 16 deer and we know the exact number by the notches on the bone-handled knife he brought to our meeting and the corresponding number of notches on the stock of the 12 gauge shotgun he used to take all his deer.

The deer camp and hunting party eventually moved to Washington Heights in Middlesex County and then to Chester in Morris County in the late 50s. In the 1960s deer hunting got a whole lot better for Uncle Frank when his nephew, Frank Shepherd, bought a small farm in Hunterdon County where they still hunt deer together today. Most of his deer have been taken during the last 20 years, after the age that most hunters have either passed on or are physically unable to hunt. Over the years, Harmis has taken 16 deer and we know the exact number by the notches on the bone-handled knife he brought to our meeting and the corresponding number of notches on the stock of the 12 gauge



Deer # 17 taken in Hunterdon County in 2012.

shotgun he used to take all his deer.

Frank Harmis and I only spoke for several hours but it was long enough to know his passion for the outdoors and his love of the hunting and fishing lifestyle. In preparing to write this article I thought often and long about hunting and fishing not just as a hobby but as a lifestyle that defines

who we are and what we hold dear. Imagine living that lifestyle for nearly 100 years. Frank was fortunate to have a wife who understood his passion and encouraged him even as he aged to keep hunting and fishing as long as he could. She even said to him, "Maybe someday someone will write a magazine article about you." His wife of 69 years passed on in 2010 but hopefully Mrs. Harmis will somehow know her thought came true.

When we parted last summer I told Uncle Frank I was really pulling for him to get another deer during the upcoming season because we were eager to have a recent photo for the article. As you can see, above, he came through with a beautiful doe from his nephew's farm and put his 17th notch on the knife and shotgun. We all wish you many more notches, my friend. 🍀



Frank Harmis at age 20 with a bobcat he took while working in an Idaho Civilian Conservation Corps camp.

Bone-handled knife with 16 notches representing Frank's lifetime deer harvest.



FOLLOWING COMMENCEMENT OF the black bear season, the Fish and Wildlife Director, after consultation with the Fish and Game Council Chairman, may close the season. The Commissioner or the Director will announce such closure, which will become effective 24 hours from the daily legal closing time of the day on which the decision is made, based upon data obtained and reviewed by Fish and Wildlife. The notification number for season closure is the permit hotline number, (609) 292-9192. Season closure notification will also be announced by news release, radio and Fish and Wildlife's website NJFishandWildlife.com.

Black Bear Hunting Season: Dec. 3–8, 2012

Hunting Hours: Legal hunting hours for black bear shall be ½ hour before sunrise to ½ hour after sunset.

Bag Limit: Only one bear of either sex and any age may be taken per properly licensed hunter or farmer hunter regardless of the number of black bear permits held. It is unlawful to take or attempt to take or continue to hunt for more than the number of black bear permitted.

Special permit requirement: All black bear hunters must have a current and valid firearm hunting license and a special Black Bear Hunting Permit issued by Fish and Wildlife. See *Black Bear Management Zone Descriptions*, page 60; see also *Black Bear Hunting Permits*, page 12. Hunters are limited to purchasing two black bear hunting permits, one each for two different zones. The bag limit remains at one black bear per hunter.

Youth Bear Hunters: Youth hunters with a valid hunting license must also possess a black bear hunting permit. Youth hunters aged 10 through 13 on or before Dec. 3, 2012 must be under the direct supervision of a properly licensed adult (21 years of age or older) while bear hunting. The adult must also possess a black bear hunting permit. Direct supervision means the youth hunter and the supervising adult are together at the same location. The youth hunter may not hunt independently of the adult.

Firearms and Ammunition Legal For Bear Hunting

Shotgun: not smaller than 20 gauge nor larger than 10 gauge with rifled slugs. Lead, lead alloy or copper rifled slug or sabot slug. Buckshot is prohibited.

Muzzleloader Rifle: must be single-barrel, single shot rifles not less than .44 caliber. Flintlock, percussion and in-line ignitions are allowed. Double barrel muzzleloaders prohibited. Persons hunting with a muzzleloader rifle must also possess a current and valid rifle hunting permit.

Baiting: No person shall attempt to take or kill a black bear or have in their possession or control any firearm, or other weapon of any kind, while elevated in a standing tree or in a structure of any kind within 300 feet of a baited area. On national wildlife refuges and at the Delaware Water Gap National Recreation Area, the distribution of bait and/or hunting over

bait is prohibited. Hunters should also check with the landowner or administrative agency before placing bait on any hunting area.

Additional Black Bear Hunting Regulations

- Black bear hunters must wear a hat of solid fluorescent hunter orange or an outer garment containing at least 200 square inches of fluorescent orange material visible from all sides at all times while bear hunting.
- It shall be illegal to use dogs to pursue or run black bear.
- Allowable hunting methods: stand hunting, still-hunting or drive hunting.
- Hunters using or possessing any shotgun slug in the field during the bear seasons must have a shotgun with adjustable open iron or peep sights or a scope affixed to the shotgun.
- Telescopic sights of any magnification (scope power) are permitted for bear hunting on all firearms, including muzzleloader rifles.
- Shotgun shells containing single spherical projectiles referred to as pumpkin balls are prohibited.
- While bear hunting with a shotgun, it is illegal to have in possession any ammunition not authorized for bear hunting.
- Only one muzzleloader rifle may be in possession while bear hunting.
- All firearms must be cased and unloaded while being transported in vehicles.
- It is illegal to take or attempt to take a black bear with a bow and arrow or with a crossbow.
- It is illegal to take or attempt to take a bear in a den structure.

Black Bear Hunting on State Lands

- Baiting is **prohibited** within 450 feet of campsites and picnic areas in all state parks and forests to coincide with the bear management policy for these areas. Learn these locations **BEFORE** you hunt.
- Hunting is prohibited in the Cedar Swamp Natural Area at High Point State Park due to sensitive wetland habitat that could be impacted by going off trail in this area.
- ATV use is prohibited in state parks and wildlife management areas. However, hunters might be permitted to use ATVs to retrieve a bear but only with approval from, and on a pathway approved by, the park superintendent or designee (for state parks and forests) or from Fish and Wildlife's regional Law Enforcement office (for assistance on wildlife management areas).

After Harvesting a Bear— Mandatory Bear Check Requirement

Properly licensed hunters who harvest a black bear shall immediately complete and affix to the bear hide the "Black Bear Transportation Tag" from their Black Bear Hunting Permit. Information included on the black bear transportation tag shall include: the hunter's name, address, Conservation

ID number; date and time of kill; nearest road, county and municipality of kill; and the sex of the black bear. When field dressing a black bear, leave the sex organs intact and attached to the body.

It is critical to remove the hide and cool the bear immediately after checking the bear. Cooling a bear with ice from inside the body cavity is inadequate to prevent the meat from spoiling. If the hide remains on overnight, the meat may be unsuitable for consumption.

Successful hunters must take the black bear to a designated check station by 7 p.m. on the day of the kill. Hunters shall surrender the black bear transportation tag and will be issued a legal possession seal.

Any legally killed black bear recovered too late to be brought to a designated black bear check station by 7 p.m. on the date of the kill must be reported immediately by telephone to the Northern Region Office of the Bureau of Law Enforcement (908) 735-8240. On the telephone message recording device, hunters must leave their name, address and a telephone number where they can be reached. The harvested black bear must be brought to a designated black bear check station on the next weekday to be registered and to receive a legal possession seal. After check stations have closed on Saturday, hunters reporting a bear harvest via the Law Enforcement recorder will be contacted by a Fish and Wildlife biologist on Sunday to legally check the bear and to collect biological data.

(continued on page 60)

2011 Black Bear Harvest by Zone and County

BMZ	2011 Harvest
1	186
2	139
3	111
4	33
Total	469

County	2011 Harvest
Sussex	309
Warren	100
Passaic	25
Morris	33
Bergen	1
Hunterdon	1
Total	469

Hunt Of A Lifetime
Making Hunting & Fishing Dreams Come True
for YOUNGSTERS, 21 & UNDER, with
LIFE-THREATENING ILLNESSES
Toll Free: 866-345-4455
www.HuntOfALifetime.org

Bear Hunting

REGULATIONS

Mandatory Black Bear Check Stations

Hours: 12 noon to 7 p.m.

Warren County

- Pequest Wildlife Management Area
605 Pequest Road, Oxford

Morris County

- Black River Wildlife Management Area*
275 North Road, Chester

Sussex County

- Green Pond Golf Course
765 Green Pond Rd.
Rockaway
- Flatbrook Roy WMA
Rt. 615 (Walpack Rd.), Sandyston
- Whittingham WMA
148 Fredon-Springdale Rd., Newton

* Operating Opening Day and Saturday only

Black Bear Game Care

As when cooking any raw meat, care must be taken to prevent exposure to disease when consuming wild game. Black bear are known to carry *Trichinella*,

a parasite commonly associated with pork. States nationwide report incidents of bears infected with *Trichinella* and New Jersey is no different. A *Trichinella* infection (Trichinellosis) is a risk only if the meat is cooked improperly. To ensure bear meat is safe to eat, be sure it's cooked to an internal temperature of 170 degrees for at least 15 seconds.

Toxoplasmosis, most commonly associated with cats, is another parasitic disease that may be transmitted to humans if meat is not handled properly. To eliminate any health risks associated with Toxoplasmosis make sure no one who may be pregnant handle raw bear meat and always cook the meat thoroughly as you would for *Trichinella*. If you follow these simple guidelines you can enjoy your bear meat without any concern for exposure to *Trichinella* or Toxoplasmosis.

Black Bear Management Zone Descriptions

Note: Black bear management zones are different than deer management zones. Choose carefully when purchasing a black bear permit.

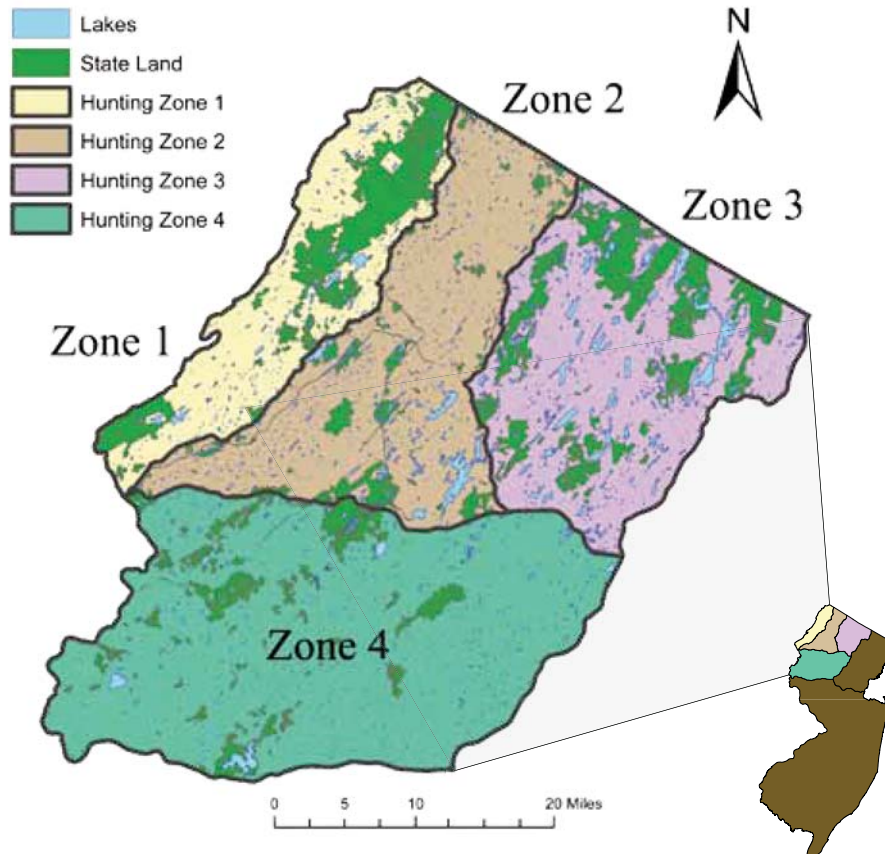
Bear Management Zone No. 1: That portion of Warren and Sussex counties lying within a

continuous line beginning at the intersection of the Portland Bridge and the Delaware River at Columbia; then northward along the east bank of the Delaware River to the New York State line; then east along the New York State line to Rt. 519; then south along Rt. 519 to its intersection with Rt. 627; then south along Rt. 627 to its intersection with Rt. 626; then south along Rt. 626 to its intersection with Rt. 521; then southwest along Rt. 521 to its intersection with Rt. 94 in Blairstown; the southwest along Rt. 94 to the Portland Bridge, the point of beginning in Columbia. The islands of Labar, Tocks, Poxono, Depew, Namanock, Minisink and Mashipacong lying in the Delaware River are also included within this hunting area.

Bear Management Zone No. Area 2: That portion of Sussex, Warren and Morris counties lying within a continuous line beginning at Portland Bridge in Columbia; then northward along Rt. 94 to its intersection with Rt. 521 in Blairstown; then north along Rt. 521 to its intersection with Rt. 626; then north along Rt. 626 to its intersection with Rt. 627; then north along Rt. 627 to its intersection with Rt. 519 in Branchville; then north along Rt. 519 to the New York State line; then southeast along the New York

Black Bear Management Zone Map

NOTE: Bear management zones are *different* than deer management zones.



Paul's Taxidermy Wildlife Artistry

Spotswood, NJ (Middlesex County)



Paul Baczkoczky, Owner
President of Garden State Taxidermist Association

- **Big & Small Game Specialist**
- **Over 100 awards**
(State, National and World Show Competitions)
- **Division of Excellence Recipient**
- **Superior Quality and Artistic Vision**

732-251-9120 (after 4pm) | **732-887-5870** (8am-4pm)

www.paulstaxidermy.net

State line to Rt. 517; then south along Rt. 517 to its intersection with Rt. 94; then south on Rt. 94 to its intersection with Rt. 23 in Hamburg Borough; then south along Rt. 23 to its intersection with Rt. 517 in Franklin; then south along Rt. 517 to its intersection with Rt. 15 in Sparta; then south along Rt. 15 to its intersection with Interstate 80 in Dover; then west along interstate 80 to its intersection with Rt. 94; then south along Rt. 94 to the intersection with the Portland Bridge and the Delaware River located in Columbia, the point of beginning.

Bear Management Zone No. 3: That portion of Sussex, Passaic, Morris and Bergen counties lying within a continuous line beginning at the intersection of Rt. 80 and Rt. 15 in Dover; then north along Rt. 15 to its intersection with Rt. 517 in Sparta; then north along Rt. 517 to its intersection with Rt. 23 in Franklin; then north along Rt. 23/517 to its intersection with 517 in Hamburg Borough; then north along Rt. 517 to the New York State line; then east along the New York State line to its intersection with Rt. 287; then south along Rt. 287 to its intersection with Rt. 80; then west along Rt. 80 to its intersection with Rt. 15 the point of beginning in Dover.

Bear Management Zone No. 4: That portion of Sussex, Warren, Morris, Somerset and Hunterdon counties lying within a continuous line beginning at the intersection of Rt. 78 and the Delaware River; then north along the east bank of the Delaware River to the Portland Bridge at Columbia; then northeast along Rt. 94 to its intersection with Rt. 80; then east along Rt. 80 to its intersection with Rt. 287; then southwest along Rt. 287 to its intersection with Rt. 78; then west along Rt. 78 to the Delaware River the point of beginning.



©Crystalcraig | Dreamstime.com



New Jersey Quail Project

habitat wildlife stewardship

The New Jersey Quail Project was formed in 2007 in response to the alarming decline of bobwhite quail populations across the nation and New Jersey.

The NJQP is a venture of the New Jersey Outdoor Alliance Environmental Projects.

Your support is essential

Name _____

Address _____

Phone _____

E-mail _____

Your annual donation of \$30 helps fund work to recondition degraded habitat, buy seed, restore quail populations and supports the Quail in the School Program in New Jersey.

The New Jersey Quail Project collaborates with other groups locally and nationally.

Supporters receive updates, notice of volunteer opportunities and special events.

Get the satisfaction of knowing you make a difference.

Please send this completed form and your check to
New Jersey Quail Project
PO Box 56, Waretown, NJ 08758

www.NJQuailProject.org

Conservation from the ground up!



PRO LINE

World Famous Hunting & Fishing Boots

GET THE BEST YOU CAN GET.

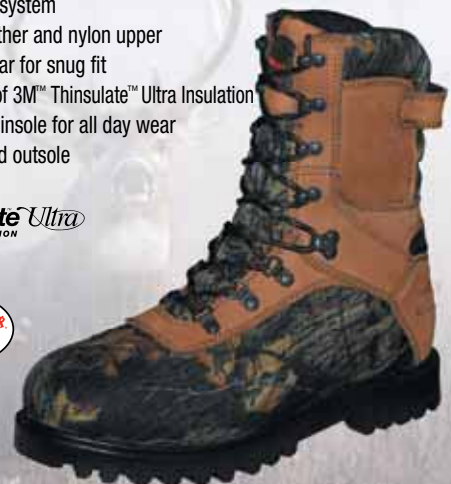
WIN61405MOB Raven 9"

- 100% waterproof construction with Winchester® waterproof system
- Nubuck leather and nylon upper
- Padded collar for snug fit
- 400 grams of 3M™ Thinsulate™ Ultra Insulation
- Removable insole for all day wear
- PVC studded outsole

3M
Thinsulate Ultra
INSULATION



100%
Waterproof



Pro Line Manufacturing Co.

186 Parish Drive • Wayne, NJ 07470 • 1-800-334-4612

Fax: 1-973-692-0999 • www.prolineboots.com

3M and Thinsulate are trademarks of 3M.

Small Game Hunting

REGULATIONS

Regulations in **red** are new this year.
Purple text indicates an important note.

A CURRENT AND valid hunting license (Bow and Arrow, Firearm or All-Around Sportsman) is required to pursue any small game species. See page 25 for *General Hunting Regulations*. The use of dogs, unless specifically stated otherwise, is permitted to pursue any small game species, except wild turkey. Hunting for those species shown on page 65 is prohibited during the statewide Six-day Firearm (deer) Season and on the Wednesday of the Permit Shotgun (deer) Season that immediately follows the Six-day Firearm Season. For exceptions, see *Coyote and Fox* and *Semi-wild and Commercial Preserve Hunting* sections below. Sunday hunting is prohibited; see *Raccoon and Opossum*, page 64 plus *Semi-wild and Commercial Shooting Preserves* for exceptions.

Season Dates and Bag Limits: The *Small Game Hunting Seasons* table on page 65 lists dates, hunting hours and daily bag limits for all small game species open for hunting. Hunting with firearms is prohibited on Nov. 9, 2012 on state wildlife management areas designated as Pheasant and Quail Stamp Areas (see *Pheasants* below) except in tidal marshes open to an on-going waterfowl season.

General Small Game Hunting Methods: Properly licensed hunters may hunt small game with shotguns or bow and arrow and limited hunting with small caliber rifles; see below. See also *General Hunting Regulations*, page 25.

Shotgun: Unless specifically stated otherwise, shotguns for small game hunting may be single or double barrel, rifled or smoothbore and not larger than 10-gauge or smaller than .410 caliber and capable of holding no more than three shells.

Shot: Unless specifically stated otherwise, shot size for small game hunting may be no larger than #4 fine shot.

Bow and Arrow: All bows must meet the requirements specified in *General Hunting Regulations*, page 25. For taking game birds in flight, arrows equipped with an edged head are prohibited. Flu flu arrows are required for taking game birds in flight.

Muzzleloading Rifles: For limited small game rifle hunting, see below for *Coyote and Fox—Special Permit Season, Raccoon and Opossum, Squirrel—Muzzleloading Rifle Season* and *Woodchuck* for restrictions.

Wildlife Damage: Property owners or their agents, and occupants of dwellings that are suffering damage from coyote, fox, opossum, raccoon, skunk, squirrel, weasel or woodchuck may control them by lawful means at any time subject to local ordinances.

Stealing Traps or Trapped Animals: It is illegal to take, carry away or unlawfully remove or steal a trap belonging to another person that is set along, by or in public or private property, ditch, stream, pond or water in this state and which has been set for the purpose of catching any of the furbearing animals species for which a legal season is established. It is also illegal to remove, alive or dead, any animal from the trap of another person.

Coyote and Fox, General and Special Permit Seasons

See chart below for both general and special permit season regulations for coyote and fox. **NOTE: All successful coyote hunters must report any coyote harvested to a Fish and Wildlife Regional Law Enforcement Office within 24 hours. Callers must identify themselves by name and daytime phone number.**

In addition to the general coyote and fox seasons described in the chart below, properly licensed persons hunting deer during the Six-day Firearm, Permit Muzzleloader or Permit Shotgun deer seasons may kill coyote or fox if the coyote or fox is encountered before the hunter has taken the season bag limit of deer. However, after the hunter has taken a *daily* bag limit of deer, they must cease hunting immediately. Incidental hunting of coyote or fox while deer hunting may resume the following day (provided the season remains open and the season bag limit of deer has not been reached.) Only applicable projectiles approved for deer hunting may be used to take coyote and fox incidental to deer hunting during the deer seasons described above. See *Firearms, Bow and Ammunition* chart, page 31.

Further, in addition to the general Coyote and Fox seasons plus the incidental harvest of coyote or fox while deer hunting, a Special Permit Coyote and Fox Season runs concurrent with the regular small game coyote and fox season. A Fish and Wildlife-issued permit is required to hunt coyote under the provisions (see below) of the Special Permit Coyote and Fox Season; as follows:

A permit to hunt coyote or fox is required 1) to hunt at night and/or 2) to use shot sizes larger than #4 and up to size T, and/or 3) to use a muzzleloader other than incidental to deer hunting.

Coyote/Fox permits: \$2, available at any license agent or via Fish and Wildlife's Internet license sales site (www.NJ.WildlifeLicense.com) beginning December 3. A 2013 hunting license must be purchased prior to or in conjunction with the purchase of a Special Coyote and Fox Permit.

(continued on page 64)

Coyote / Fox Season

Dates	Sept. 8 – Nov. 9 but only in DMZs open for early fall bow deer hunting; otherwise Sept. 29 – Nov. 9	Nov. 10 – March 15 — Firearm or Bow	Jan. 1 – March 15 — Special Permit Season (Permit required with shot larger than #4 thru T sizes and/or nighttime hunting and/or using a muzzleloader other than incidental to deer hunting)	
Hours	½ hour before sunrise to ½ hour after sunset	½ hour before sunrise to ½ hour after sunset, except 8 a.m. start on Nov. 10	½ hour before sunrise to ½ hour after sunset	½ hour after sunset to ½ hour before sunrise
Weapon Type and Projectiles Permitted	Bow: long, recurve, compound or crossbow See <i>General Small Game Hunting Methods</i> above.	Bow: long, recurve, compound or crossbow See <i>General Small Game Hunting Methods</i> above.	Bow: long, recurve, compound or crossbow See <i>General Small Game Hunting Methods</i> , above.	Shotgun: single or double barrel. Not smaller than 12 gauge or larger than 10 gauge, capable of holding no more than 3 shells. Shot: sizes not smaller than #4 fine shot or larger than "T" shot
		Shotgun and Shot Size: See <i>General Small Game Hunting Methods</i> , above.	Shotgun: single or double barrel. Not smaller than 12 gauge or larger than 10 gauge, capable of holding no more than 3 shells. Shot: sizes not smaller than #4 fine shot or larger than "T" shot	
Notes	Hunter orange not required. Use of dogs prohibited. Daily bag: unlimited coyote or fox	Muzzleloading rifle: Only projectiles approved for deer hunting (see page 30) may be used for incidental coyote or fox harvest. See <i>Notes</i> , below and chart on page 31. Electronic ignitions prohibited.	Muzzleloading rifle: single-shot, single barrel no less than .44 caliber. Flintlock, percussion and in-line ignitions permitted, loaded only with a single projectile, either round ball or conical bullet. Electronic ignitions prohibited.	Shot: sizes not smaller than #4 fine shot or larger than "T"
		Hunter orange required when using firearm. Muzzleloading rifle may be used only incidental to deer hunting. Use of dogs permitted except during Dec. 3–8, and Dec. 12. Daily bag: unlimited coyote or fox	While hunting under the provisions of the Special Permit: Hunter orange is not required (but is recommended while traveling to/from hunting areas.) Hunting methods are restricted to calling and stand hunting. A predator-calling device must be in possession. Use of dogs is prohibited. Use of bait is prohibited. Portable lights are allowed. Daily bag: unlimited coyote or fox	

Wildlife Artistry

TAXIDERMISTRY

by Mario Curra

40 Years of Experience

Specializing in North American & African Species

BIRDS | FISH | RUGS

3 Month Turn Around On Most Work
Camo-Dipping Available
Lucky-Buck Mineral Distributors

Check Us Out On Facebook | Visa & Mastercard Accepted



Recommended by...

Tom the Butcher Deer Processing | 8 Adams St. | Washington, NJ | 07882

Stop paying huge bills for freezer wrapped products that WILL spoil in 6 months if not used. We have state of the art refrigeration on site. We vacuum pack our customers' entire order. Open 7 days a week. Reasonable fee of \$80 for boneless cuts. Guaranteed your own deer back! Call Tom at **908.689.7440** or visit our website at www.TomTheButcherNJ.com. Stop by the shop to see some of Wildlife Artistry Taxidermy's work!

- Sweet & Hot Italian Sausage, Breakfast Sausage
- Bologna, Cheddar Ring Bologna
- Jerky, Hot & Spicy Jerky, Hot Sticks
- Hot Dogs, Cheddar Cheese & Sauerkraut Hot Dogs
- Kielbasa, Bratwurst, Pepperoni
- Hunter's Log, Pork Roll

Strictly Archery Pro Shop & Hunting Supplies

Rt. 57 at Biedleman Rd. | Washington, NJ | 07882 | Call Ray or Tom at 908.689.5800

Call us today at **908.979.3037**
or **201.214.5875**

10 Cider Mill Lane | Port Murray, NJ | 07865

Detailed.....Quality.....Craftsmanship

(continued from page 62)

Northern Bobwhite (Quail)

Northern bobwhite quail are native to the southern half of New Jersey. In recent years, quail populations have declined throughout their range including New Jersey. In an effort to reverse this decline in New Jersey, the statewide quail hunting season is closed except at Peaslee WMA and Greenwood Forest WMA where Fish and Wildlife will provide hunters and falcons the opportunity to hunt for quail. See *Small Game Hunting Seasons* chart, page 65 for season dates and bag limits. Exception: This statewide closure does not apply to certain semi-wild and commercial shooting preserves that were permitted to stock quail during the 2009–10 season.

Pheasant

See *Small Game Hunting Seasons* chart, page 65 for season dates and bag limits. See exceptions below for semi-wild and commercial preserve hunting.

Pheasant and Quail Stamp Areas: Anyone aged 16 and over (except 16 year olds whose Youth License remains valid until Dec. 31 in the year they reach 16 years of age) hunting or possessing pheasant or quail on the following designated wildlife management areas shall have in possession a current and valid Pheasant and Quail Stamp (Youth Hunting licenses include pheasant and quail stamp): Assunpink, Berkshire Valley, Millville (Bevan), Black River, Clinton, Colliers Mills, Dix, Flatbrook, Glassboro, Greenwood (including Pasadena-Howardsville), Heislerville, Tuckahoe (MacNamara), Mad Horse, Manahawkin, Manasquan River, Medford, Nantuxent, Peaslee, Pequest, Port Republic, Stafford Forge, Walpack, Whittingham and Winslow. A current and valid Pheasant and Quail Stamp is also required at the Delaware River National Recreation Area.

Pheasant and Quail Stocking

Fish and Wildlife anticipates pheasant releases to be in excess of 50,000 birds, and plans to purchase 11,000 quail for release as follows:

Assunpink, Berkshire Valley, Black River, Clinton, Colliers Mills, Dix, Flatbrook, Glassboro, Millville (Bevan), Nantuxent, Pequest, Port Republic, Tuckahoe (MacNamara), Walpack

Regulations in red are new this year.
Purple text indicates an important note.

and Whittingham WMAs will be **stocked with pheasant** for the following dates:

- Nov. 10, 13, 15, 17, 20, 22, 24
- Dec. 1, 11, 15, 18, 20, 22, 27, 29

Delaware Water Gap National Recreation Area and the Heislerville, Howardsville, Mad Horse, Manahawkin, Manasquan, Medford, Stafford Forge and Winslow WMAs will be **stocked with pheasant** for the following dates:

- Nov. 10, 12, 22, 24
- Dec. 1, 15, 22, 27, 29

Greenwood Forest and Peaslee WMAs will be **stocked with quail** for the following dates:

- Nov. 10, 13, 15, 17, 20, 22, 24
- Dec. 1, 11, 15, 18, 20, 22, 27, 29

Fish and Wildlife reminds sportsmen and sportswomen that the stocking schedule is tentative until approved by the Fish and Game Council in early October. The schedule is subject to pheasant production and may change due to emergency weather conditions. For changes to the stocking schedule due to inclement weather or other necessary adjustments, visit our website at NJFishandWildlife.com/smgame-info.htm.

Rabbit and Hare

The rabbit and hare hunting season will begin the last Saturday in September. The early opening date allows for hunting opportunity when rabbit populations are at their peak. Firearm hunting is prohibited on Nov. 9 on those wildlife management areas designated as Pheasant and Quail Stamp Areas. See *Small Game Hunting Seasons* chart, page 65 for season dates and bag limits.

Raccoon and Opossum

See *Small Game Hunting Seasons* chart, page 65 for season dates and bag limits.

Hours: Hunting may not begin until one hour after sunset on the opening day of the season. On all other days open during the season, the hours of hunting are one hour after sunset to one hour before sunrise. Sunday hunting is permitted only between the hours of midnight (Saturday) and one hour before sunrise (Sunday).

Hunting methods: Portable lights are permitted. Fluorescent orange is encouraged but not required on outer clothing while hunting raccoon and opossum. A current and valid rifle permit is required when possessing a .22 caliber rifle while hunting raccoon and opossum when only .22 caliber shorts are permitted.

Dog Training: Dogs may be trained during the month of September and from March 2 to May 1, inclusive. The training hours are one hour after sunset to one hour before sunrise.

Ruffed Grouse

The state's two ruffed grouse hunting zones are delineated by Rt. 70. North of Rt. 70 the season

length will begin October 18. Firearm hunting is prohibited on Nov. 9 on those wildlife management areas designated as Pheasant and Quail Stamp Areas. South of Rt. 70 the season length will begin November 10 to reduce harvest mortality of the remaining populations in the southern zone. The ruffed grouse zones are identical to those for woodcock and will provide for consistent regulations for these species that are often hunted simultaneously. See *Small Game Hunting Seasons* chart, page 65 for season dates and bag limits.

Semi-Wild and Commercial Preserve Hunting

Hunting for certain species of game birds is allowed from Nov. 10 to March 15 on semi-wild and from Sept. 1 through May 1 on commercial shooting preserves that are properly licensed for the taking of such species. These species of game may be hunted on Sunday only on semi-wild or commercial shooting preserve lands.

Youth hunters (in possession of a valid Youth Hunting License and accompanied by a licensed, non-shooting adult) will be permitted to hunt pheasant, quail and/or chukar partridge on licensed semi-wild preserves on Saturday, Nov. 3, 2012—the Youth Pheasant Hunting Day.

All game taken on semi-wild or commercial preserves must be properly tagged before being transported off the licensed property.

A person may legally hunt on semi-wild or commercial preserves for game birds during deer seasons, but no shot larger than #4 fine may be used. There are no daily bag or seasonal limits for pheasant, quail, chukar or mallards taken on commercial preserves. There are no daily bag limits for pheasant, quail or chukar taken on semi-wild properties. Seasonal harvests on semi-wild properties may not exceed the number of birds to be stocked as indicated on the semi-wild permit application.

Squirrel, Regular Season

See *Small Game Hunting Seasons* chart, page 65.

Squirrel, Muzzleloading Rifle Season

Persons holding a current and valid firearm license and rifle permit may hunt for squirrels from sunrise to ½ hour after sunset with a muzzleloading rifle (.36 caliber or smaller loaded with a single projectile) during the periods Sept. 29 to Nov. 9, 2012; and, Jan. 5 to Feb. 18, 2013. Firearm hunting is prohibited on Nov. 11 on those wildlife management areas designated as Pheasant and Quail Stamp Areas. Hunting for squirrel in the manner described above is restricted to the areas described below:

- Those portions of Passaic, Mercer, Hunterdon, Warren, Morris and Sussex counties lying within a continuous line beginning at the intersection of Rt. 513 and the New York State line; then south along Rt. 513 to its intersection with Rt. 511; then south along Rt. 511 to its intersection with Rt. 46;

(continued on page 66)

Pack out what you pack in!

NO LITTERING!

Respect our natural resources and all landowners, whether public or private. The hunter image depends on you; a little litter can make a huge difference.

2012–2013 Small Game Hunting Seasons

Species (alphabetical)	Inclusive Dates	Hunting Hours	Daily Limits	Notes
Bobwhite (quail)	Closed statewide; except at Peaslee & Greenwood WMA (see Notes) At Peaslee & Greenwood WMAs ONLY: Nov. 10-Dec. 1; Dec. 10, 11, 13-31, 2012; and Jan. 1-31, 2013	Sunrise to ½ hour after sunset	4	8 a.m. start on Nov. 10 Quail may be hunted ONLY at Peaslee and Greenwood Forest WMAs. Pheasant and Quail Stamp required. Season closed in remainder of the state. (See exceptions under Northern Bobwhite, page 64.)
Coyote* and Fox, General All coyote must be reported within 24 hrs.	Bow and Arrow only: Sep. 8-Nov. 9 in DMZ Regulation Sets 3A-8 Sept. 29–Nov. 9 in DMZ Regulation Sets 0-3 Firearm or Bow and Arrow: Nov. 10, 2012 – March 15, 2013	½ hour before sunrise to ½ hour after sunset	No limit	8 a.m. start on Nov. 10 Open Dec. 3–8 and Dec. 12 with restrictions as specified under Small Game Hunting, <i>Coyote and Fox</i> , page 62. Rifle permit required in possession when hunting with muzzleloading rifle (allowed only incidental to deer hunting).
Coyote* and Fox, Special Permit Season All coyote must be reported within 24 hrs.	Firearm or Bow and Arrow: Jan. 1 to March 15, 2013 (permit required)	Permit holders may hunt day and night with certain restrictions; see <i>Notes</i> at right.	No limit	For complete details, and for when a permit is required, see Small Game Hunting, <i>Coyote and Fox</i> , page 62. Calling and standing hunting only. Predator calling device must be in possession. Rifle permit required in possession when hunting with muzzleloading rifle, allowed only during the daytime hunting hours. During night hunting (½ hour after sunset to ½ hour before sunrise), only 10 or 12 gauge shotguns with #4 through "T" size shot are permitted. Coyote/fox permit required.
Crow (Mon., Thurs., Fri., Sat.)	Aug. 12 – Dec. 1 and Dec. 10 – Mar. 16	Sunrise to ½ hour after sunset	No limit	Maximum shot size is #4
Grouse, Ruffed	North of Rt. 70: Oct. 18 to Dec. 1** and Dec. 10, 11, 13–31 South of Rt. 70: Nov. 10 to Dec. 1** and Dec. 10, 11, 13–31	Sunrise to ½ hour after sunset	2	8 a.m. start on Nov. 10
Opossum & Raccoon	Oct. 1, 2012 to Mar. 1, 2013	1 hour after sunset to 1 hour before sunrise	No limit	Rifle permit required when hunting with rifle. 7:41 p.m. start on Oct. 1 Closed Dec. 3–8 and Dec. 12
Pheasant & Chukar	Nov. 10 to Dec. 1 and Dec. 10, 11, 13–31, 2012 and Jan. 1 to Feb. 18, 2013	Sunrise to ½ hour after sunset	Chukar — 7 Pheasant — 2	8 a.m. start on Nov. 10 Pheasant and Quail Stamp required on designated areas (see <i>Small Game Hunting</i> page 64).
Rabbit, Hare and Jackrabbit	Sept. 29 to Dec. 1 and Dec. 10, 11, 13-31, 2012 and Jan. 1 to Feb. 23, 2013	Sunrise to ½ hour after sunset	Cottontail — 4 Hare — 1 Jackrabbit — 1	8 a.m. start on Nov. 10
Squirrel, Gray	Sept. 29 to Dec. 1** and Dec. 10, 11, 13–31, 2012 and Jan. 1 to Feb 18, 2013	Sunrise to ½ hour after sunset	5	8 a.m. start on Nov. 10
Squirrel, Gray: Muzzleloading Rifle (.36 caliber or smaller)	Sept. 29 to Nov. 9, 2012 and Jan. 5 to Feb. 18, 2013	Sunrise to ½ hour after sunset	5	Rifle permit required. Designated areas only (see <i>Small Game Hunting</i> page 64).
Turkey (Fall, Either-Sex)	(Period N) Oct. 27–Nov. 3	½ hour before sunrise to ½ hour after sunset.	1 Turkey (either sex) per permit	Permit required. Turkey Hunting Areas 1–5, 8, 9, 11, 20–22 only.
Turkey (Spring Gobbler)	(Periods A to E) Apr. 22 to May 24, 2013	½ hour before sunrise to noon	1 Male Turkey per permit	Permit required. Refer to 2013 turkey permit supplement, available in late January.
Turkey (Spring Gobbler, Youth)	(Period Y) Apr. 20 to May 24, 2013	½ hour before sunrise to noon	1 Male Turkey per permit	Permit required. Refer to 2013 turkey permit supplement, available in late January.
Woodchuck: Bow, Rifle or Shotgun	March 1 to Sept. 26, 2012 March 1 to Sept. 25, 2013	Sunrise to ½ hour after sunset	No limit	Rifle permit required when hunting with rifle. Rifle hunting prohibited on state property (see <i>General Hunting Regulations</i> , page 25 and <i>Small Game Regulations</i> page 62).
Woodchuck: Bow or Shotgun	Sept. 29 to Dec. 1** and Dec. 10, 11, 13-31, 2012; and Jan. 1 to Feb. 18, 2013	Sunrise to ½ hour after sunset	No limit	8 a.m. start on Nov. 10
Woodcock	See <i>Migratory Bird Regulations</i> **	Sunrise to sunset	3 daily; 6 possession	HIP number required (see page 73). 8 a.m. start on Nov. 10
Youth Turkey Day	Apr. 20, 2013	½ hour before sunrise to noon	1 Male Wild Turkey	Permit required. Refer to 2013 turkey permit supplement, available in late January.
Youth Upland Bird Day	Nov. 3, 2012	8 a.m. to sunset	Pheasant — 2	Selected WMAs and licensed semi-wilds (see page 24).

* All harvested coyote must be reported to a regional Division Law Enforcement Office within 24 hours. Callers must identify themselves by name and daytime phone number.

** No firearm hunting is permitted on **November 9** on those WMAs designated as Pheasant and Quail Stamp Areas. See list of areas, page 64.

(continued from page 64)

then west along Rt. 46 to its intersection with Rt. 80; then west along Rt. 80 to its intersection with Rt. 15; then north along Rt. 15 to its intersection with the Morris-Sussex County line; then south along the Morris-Sussex County line to the Warren County line; then southwest along the Morris-Warren County line to the Hunterdon County line; then southeast along the Morris-Hunterdon County line to the Somerset County line; then south along the Somerset-Hunterdon County line to its intersection with the Mercer County line; then west and south along the Hunterdon Mercer County line to its intersection with Rt. 31; then south along Rt. 31 to its intersection with Rt. 546; then west along Rt. 546 to the Delaware River; then north along the east bank of the Delaware River to the New York State line; then east along the New York State line to the point of beginning at Lakeside.

- In that portion of Salem, Gloucester, Camden, Burlington, Mercer, Monmouth, Ocean, Atlantic, Cape May and Cumberland counties lying within a continuous line beginning at the intersection of Rt. 295 and the Delaware River; then east along Rt. 295 to its intersection with the New Jersey Turnpike; then east along the New Jersey Turnpike to its intersection with Rt. 40; then east along Rt. 40 to its intersection with Rt. 47; then north along Rt. 47 to its intersection with Rt. 536; then east along Rt. 536 to its intersection with Rt. 206; then north along Rt. 206 to its intersection with the New Jersey Turnpike; then northeast along the New Jersey Turnpike to its intersection with Rt. 571; then southeast along Rt. 571 to its intersection with the Garden State Parkway; then south along the Garden State Parkway to its intersection with Rt. 9 at Somers Point; then south along Rt. 9 to its intersection with Rt. 83; then west along Rt. 83 to its intersection with Rt. 47; then north along Rt. 47 to its intersection with Dennis Creek; then south along the west bank of Dennis Creek to its intersection with Delaware Bay; then northwest along the east shore of Delaware Bay and the Delaware River to the point of beginning.

Woodchuck

All persons in possession of a rifle (including a muzzleloading rifle) while hunting woodchuck must have a current and valid rifle permit in addition to the current hunting license. Rifle hunting (of any kind) for woodchuck is prohibited on state wildlife management areas, state parks, state forests or state recreation areas. Farmers and their agents may use shot not larger than #4 buckshot to control woodchuck causing damage. Hours of hunting are sunrise to ½ hour after sunset. See chart at right for woodchuck hunting details. 🦊

Regulations in **red** are new this year.
Purple text indicates an important note.

Woodchuck Season

Dates	Weapon Type Permitted	Gauge, Caliber or Weight	Projectile(s)
Mar. 1 to Sept. 26, 2012	Center-fire rifle	.25 caliber or less	Hollow point, soft point or expanding lead core bullets of any weight.
		Larger than .25 caliber	Hollow point, soft point or expanding lead core bullets of any weight not exceeding 100 grains in weight.
Mar. 1 to Sept. 25, 2013	Rim-fire rifle	.25 caliber or less	Hollow point or soft point
	Muzzleloading rifle: single-shot, single barrel. Flintlock, percussion and in-line ignitions permitted.	No restriction	Must be loaded with a single projectile, either round ball or conical bullet.
Sept. 29 to Dec. 1 and Dec. 10, 11, 13-31, 2012	Bow: long, recurve, compound or crossbow	35 pounds pull at archers draw length (long and recurve bows) or peak weight (compound bow); 75 pounds pull for crossbow	Arrows must be fitted with a well-sharpened metal broadhead with a minimum width of ¾"
	Shotgun: single or double barrel, rifled bore or smoothbore	Not larger than 10 gauge, capable of holding no more than 3 shells	Shot – sizes not larger than #4 fine shot
Jan. 1 to Feb. 18, 2013	Bow: long, recurve, compound or crossbow	35 pounds pull at archers draw length (long and recurve bows) or peak weight (compound bow); 75 pounds pull for crossbow	Arrows must be fitted with a well-sharpened metal broadhead with a minimum width of ¾"
	Shotgun: single or double barrel, rifled bore or smoothbore	Not larger than 10 gauge, capable of holding no more than 3 shells	Shot – sizes not larger than #4 fine shot

XTREME PERFORMANCE ON THE HUNT.



NEW! 2012 SPORTSMAN XP® 850 H.O. — Most Power in it's Class
and **2012 RANGER XP® 800** — Class-leading 50 HP

Hardest Working Smoothest Riding Features:

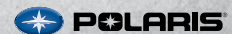
- The power you need, from a NEW, 77 HP 850 Twin Cylinder EFI in a Sportsman to the RANGER XP 800 Twin Cylinder EFI
- On-Demand True All-Wheel Drive (AWD) maximizes traction
- The smoothest, most powerful electronic power steering (EPS) available in both models
- Detailed customization with hundreds of rugged and reliable Pure Polaris accessories



FIND YOURS TODAY AT:

Motorcycle Mall
Largest Inventory in Tri-State Area
973-751-4545
655 Washington Ave.
Belleville, NJ 07109
www.motorcyclemall.com

Vehicles shown with optional accessories. Avoid operating Polaris RANGERS on paved surfaces or public roads. Riders and passengers should always wear helmets, eye protection, protective clothing, and seat belts. Always use seat belts. Drivers of RANGER vehicles must be at least 16 years old with a valid driver's license. Warning: ATVs can be hazardous to operate. For your safety, avoid operating Polaris ATVs on paved surfaces or public roads. Riders and passengers should wear helmets, eye protection, protective clothing and seat belts. Polaris adult ATV models are for riders aged 16 and older. Be sure to take a safety training course. For safety training information in the U.S., call the SVIA at (800) 887-2287, see your dealer, or call Polaris at (800) 342-3764. In Canada, see your local dealer. ©2011 Polaris Industries Inc.



Fall 2012 Turkey Hunting Regulations

The 2012 fall turkey season will consist of one seven-day hunting segment, N, (excluding Sunday) from Saturday, Oct. 27 through Saturday, Nov. 3, 2012. Fall hunting hours are one-half hour before sunrise until one-half hour after sunset. Turkey Hunting Areas 1-5, 8, 9, 11, 20-22 are open for fall hunting. Turkey Hunting Areas 6, 7, 10, 12 and 14-16 are closed to fall hunting.

- **Bag Limit:** One wild turkey of either sex per day during the fall season regardless of the number of permits the hunter holds.
- Dogs and artificial decoys may be used while turkey hunting in the fall season, except the use of electronically-operated decoys is prohibited. All hunters are required to possess a calling device while turkey hunting.
- The maximum group size while turkey hunting is five hunters. Hunters may not attempt to chase or drive turkeys for the purpose of putting them in range of other hunters. However, hunters may rush a flock of turkeys to cause the flock to scatter.
- No shot larger than #4 fine shot or smaller than #7½ fine shot may be used for turkey hunting.
- Hunters may not use shotguns larger than 10-gauge or smaller than 20-gauge for turkey hunting.
- Fluorescent hunter orange is not required to hunt turkey.
- Properly licensed hunters may use archery tackle to hunt turkeys.
- Turkeys may not be hunted within 300 feet of any baited area.

Immediately upon killing a turkey, hunters must complete the transportation tag on their fall hunting permit and affix it to the bird. The turkey must be taken to an official wild turkey check station by 7 p.m. on the day it is killed by the hunter who killed the bird.

Spring Turkey Season Changes

Southern New Jersey turkey hunters: be advised that there are new boundaries for Turkey Hunting Areas 16 and 22. The southern parts of Turkey Hunting Area 16 have been placed in Turkey Hunting Area 22. Refer to the Turkey Hunting Area map on Fish and Wildlife's website or to the Turkey Permit Supplement (available in late January, 2013) for the new boundary.

VIOLATORS ■ Warning to Violators

Be advised: two violations of wildlife management area regulations will result in loss of all sporting licenses and privileges for a period of five years.



Spring 2013 Gobbler Hunting Regulations

Spring gobbler hunting regulations are published in the 2013 Wild Turkey Hunting Season permit supplement available in January. See *Turkey Hunting Permits, General*, page 12.

Turkey Hunting Seminars

The latest turkey hunting techniques are presented at several turkey hunting seminars sponsored by Fish and Wildlife or wildlife conservation organizations. These seminars focus on how to set up, calling techniques and key safety information for turkey hunters. New turkey hunters are especially encouraged to join us at a seminar. Check your newspaper and the January 2013 Wild Turkey Hunting Season permit supplement for the seminars scheduled during March or April. 🗓



Joseph J. Kassir, age 10, harvested his first turkey on the Clinton Wildlife Management Area shown here with his proud father C.J.

YOUTH TURKEY HUNT DAY APRIL 20, 2013 See page 24

If no turkey is harvested on this youth hunt day, Period Y permits may be used by the youth hunter in the designated zone for the balance of the season until a bird is harvested (see page 24).

Non-hunting adults accompanying youth turkey hunters need only have in possession a valid hunting license. Turkey hunting is by permit only.

Spring and fall turkey hunting is by permit only. See *Turkey Hunting Permits, General*, page 12. For farmers, see *Farmer Turkey Permits*, page 29.

2013 Spring Gobbler Hunting Season

Hunting Period	Dates
Youth Turkey Hunting Day (10-16 years of age) Hunting Period Y	Sat., April 20 If no turkey is harvested on this youth hunt day, Period Y permits may be used in the designated zone for balance of season until a bird is harvested
Hunting Period A	Mon., April 22 – Fri., April 26
Hunting Period B	Mon., April 29 – Fri., May 3
Hunting Period C	Mon., May 6 – Fri., May 10
Hunting Period D	Mon., May 13 – Fri., May 17; Mon., May 20 – Fri., May 24
Hunting Period E	All Saturdays, April 27, May 4, May 11 and May 18

CP's Guiding Service



Offering New York's Best Sporting & Outdoor Service Year 'Round....



4-Day Guided Deer/Bear Combo
\$700/Person, includes Meals & Lodging

Spring Turkey Special
\$650/Person, 3-Day Guided Hunt

315.360.7113

www.BigGameHuntingNY.com
P.O. Box 1526 | Richfield Springs, NY | 13439

Fall & Spring Wild Turkey Hunting

FALL TURKEY CHECK STATIONS

Fall 2012 Turkey Check Stations

ATLANTIC

Main Street Hardware
6016 Main St., May's Landing
(609) 625-4941

Ted's Taxidermy
713 Rt. 40, Buena
(856) 697-8585

BURLINGTON

Sportsman's Center
Rt. 130, Bordentown
(609) 298-5300

CAPE MAY

Belle Plain Supply
346 Handisville Ave.
Belle Plain, (609) 861-2345

Fletcher's Corner
212 South Rt. 47,
Cape May C.H.
(609) 465-4949

CUMBERLAND

Beaver Dam Boat Rentals
514 Old Beaver Dam Rd.
Newport, (856) 447-3633

Blackwater Sports Center
2228 Delsea Dr., Vineland
(856) 691-1571

GLOUCESTER

Sportsman's Outpost
Fries Mill Rd., Williamstown

(856) 881-3244

The Bottle Barn
65 West Broad St.
Gibbstown, (856) 423-3608

HUNTERDON

Sportsman's Rendezvous
Rt. 31, Speedway Plaza
Flemington, (908) 788-5828

Boan's Marine
1296 Rt. 179, Lambertville
(609) 397-3311

The Corner Store
Rt. 12 and Rt. 519
Baptistown, (908) 996-7648

Carousel Deli And Bakery
Rt. 179 and Wertsville Rd.
Ringoos, (908) 788-5180

Jugtown Mountain Campsites
1074 Rt. 173 East, Asbury
(908) 735-5995

MIDDLESEX

Sayreville Sportsmen
52 Washington Ave.
Sayreville, (732) 238-2060

MORRIS

Mount Hope Deli
662 Mount Hope Ave.
Wharton, (973) 328-7259

PASSAIC

Frank's Tackle
81 Ringwood Ave., Wanaque,
(973) 835-2966

Greenwood Lake Sports Center
1745 Greenwood Lake
Turnpike, Hewitt
(973) 728-1000

SALEM

Bradway's Farm Market
Jericho Rd. & Rt. 49, Quinton
(856) 935-5698

Sam's Super Service
290 Rt. 40, Elmer
(856) 358-3488

SOMERSET

Gladpack Sunoco
1 Pottersville Rd., Peapack
Gladstone, (908) 234-1355

Puskas Dairy Farm
170 South Middlebush Rd.
Somerset, (732) 690-0380

SUSSEX

Garden State Bow & Reel
2760A Rt. 23N, Stockholm
(973) 697-3727

Hainesville General Store
283 Rt. 206 South
Hainesville, (973) 948-4280

Mountain View Country Store
300 Rt. 519, Wantage
(973) 875-6000

Simon-Peter Bait And Tackle
Rt. 206 And Brighton Rd.
Newton, (973) 786-5313

Sig Borstad Hunting Supply
7 Old Rudetown Rd.
McAfee, (973) 827-6527

Swartswood Country Store
911 Newton-Swartswood Rd.
Stillwater, (973) 383-5470

WARREN

Alpine Meats
Rt. 94 N., Blairstown
(908) 362-8568

Hi-Way Sport Shop
Box 253, Rt. 31 North,
Washington, (908) 689-6208

Smitty's Liquor & Deli
89 Rt. 46, Delaware
(908) 475-5933

The Owl's Nest
97 Rt. 519, Warren Glen
(908) 995-7903

PRIME HUNTING LANDS FOR SALE

Gateway Properties of Upstate New York

Adirondack, Southern Tier & Tug Hill Regions
Tracts Ranging from 1 to 500 Acres

Custom Built
Camps & Cabins

**LOTS BORDERING NEW YORK STATE GAME LANDS
WATERFRONT PROPERTIES AVAILABLE**

**EARLY BLACK BEAR SEASON • LONGEST RIFLE SEASON
INCLUDING SUNDAY HUNTING**

- ▶ Own your own 10 acre property near the Salmon River and state land for only \$299 per month!
- ▶ 5 Beautiful acres with road frontage and power on the snowmobile trail located by Tug Hill state land for only \$199 per month!

CALL TOLL FREE: 1-877-NY-LANDS

(1-877-695-2637)

PO Box 155, State Route 12
Alder Creek, NY 13301

WWW.WCCLINC.COM

Call today for our
"FREE" land list and
cabin packet

Financing
Available

* Rates subject to change.
Call for complete details.

GOVERNOR'S SURF FISHING TOURNAMENT

By Karen Leskie, Wildlife Technician

Get Outside and Enjoy a Day of Fishing with Family and Friends

The 21st Annual Governor's Surf Fishing Tournament will be held Sunday, Oct. 7, 2012. Once again anglers from New Jersey and neighboring states will descend upon the beaches of Island Beach State Park in hopes of catching the longest fish of the day. The tournament aims to encourage youngsters and adults to learn more about surf fishing while taking advantage of a great family activity. Funds raised by the tournament go toward marine resource conservation and education.

A beautiful fall day was enjoyed by 20th Annual Tournament anglers with 67 eligible fish entered in blackfish, bluefish, kingfish and striped bass categories. A total of 22 prizes were awarded in categories for children, teens and adults. However, the grand prize went to Michael Nightingale of East Windsor, with a 33 $\frac{3}{4}$ -inch striped bass. DEP Commissioner, Bob Martin, along with Division of Fish and Wildlife Director Dave Chanda, congratulated Mr. Nightingale with a

plaque and two rod-and-reel combinations. Also, Mr. Nightingale's name has been engraved on the Governor's Cup, which is on permanent display at Island Beach State Park.

Since its inception in 1991, the tournament has generated more than \$120,000 for various marine education and restoration efforts, construction of access ramps for disabled saltwater anglers, surf fishing instruction programs and equipment, specialized wheel chairs that provide beach access to the disabled and elderly, plus the purchase of the first mobile automatic heart defibrillator for use at Island Beach State Park.

For more information about the Governor's Surf Fishing Tournament or to receive a registration form, visit NJFishandWildlife.com/gsft.htm or call (609) 748-4347. 

New Jersey Division of Fish and Wildlife (along with our co-sponsors: New Jersey Division of Parks and Forestry, New Jersey State Federation of Sportsmen's Clubs, Jersey Coast Anglers Association and New Jersey Beach Buggy Association) would like to thank the following organizations for contributing to the success of the 20th Annual Governor's Surf Fishing Tournament in 2011:

- Canyon Gear
- Eagle Claw Fishing Tackle Company
- Grumpy's Bait & Tackle
- Legal Limits Company
- Manns Bait Company
- O Mustad & Son, Inc.
- Sportsman's Center
- Stanley Jigs, Inc.
- Surf Rocket
- Tru-Turn, Inc.
- TTI-Blakemore Fishing Group
- Wright & McGill Company

Photo: Daniel E. Beards



Jamie Darrow

Left to right: Eileen Smith, President, Jersey Coast Anglers Association; Paul Harris, President, NJ Beach Buggy Association; Bob Martin, DEP Commissioner; Michael Nightingale, 20th Annual Governor's Surf Fishing Tournament winner; and Frank Dara, President, Governor's Surf Tournament Committee.

ATV DISCLAIMER

New Jersey Division of Fish and Wildlife reminds sportsmen and sportswomen that the responsible use of all-terrain vehicles (ATVs) must be restricted to private land with permission only. The use of ATVs is prohibited on state lands including wildlife management areas, parks and forests. ATV riders should drive responsibly, avoiding damage to habitat and wildlife. Respect our natural resources and the rights of others.

NJ2AS
NEW JERSEY SECOND AMENDMENT SOCIETY

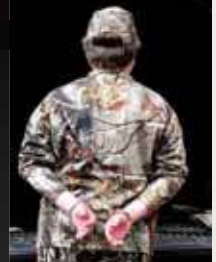


Fighting For Your Rights In New Jersey

Imagine you are returning from a hunt with your unloaded firearm locked in the trunk. You pull off the road to fix a flat, and it turns out to be school property....

If you are charged with a third degree crime, the judge has the option to go easy on you, recognizing an honest mistake; but as a second degree crime, the Graves Act would mandate a **MINIMUM 5-YEAR PRISON SENTENCE!**

At this very moment, NJ2AS is vigorously opposing NJ Assembly Bill A1216, proposed by Assemblywoman Linda Stender (D) District 22, which would raise the penalty for accidentally being in possession of a firearm on school grounds from a third degree to a second degree felony. We need your help to fight this and other dangerous legislation.



Criminals get plea deals, while hunters get mandatory sentences!

Please support our mission and become a member of the New Jersey Second Amendment Society!

Join today at NJ2AS.com/JOIN or call 609.848.0507