

Hackettstown Hatchery – Cool and Warm Water Fish Production & Distribution 2021 Production Summary and Maintenance Projects



INSIDE WEEKLY FISHING GUIDE SUPPLEMENT

2021 DREAM BOAT CHALLENGE

VOL. 49 » No. 31 » October 4, 2021

STEIGER YAMAHA

New Jersey, Delaware Bay Edition

THE Fisherman

www.TheFisherman.com

NJ state record SALMON!

8.62-POUNDER at Merrill Creek

NJ SEA BASS reopens Friday

Joe Satkowski of Hampton, NJ caught this 8.62-pound salmon at Merrill Creek Reservoir on September 30 - certified at the Charles O. Hayford State Fish Hatchery in Hackettstown - which should soon become a new official New Jersey state record. Photo by Ron DeGraff.



2022 Freshwater Fishing Season Dates and Limits • FREE

New Jersey Freshwater Fishing Digest

January 2022

Garden State Walleye page 6

A Summary of Regulations and Freshwater Fisheries Management Information
NJFishandWildlife.com



Annual Season Kickoff – Budd Lake Trapnetting for Northern Pike Broodstock
March 22, 2021 (20 Days later than 2020)



Northern Pike Broodstock Collection and Spawning
March 22nd through March 27th
49 Pike captured, 650,000 eggs taken from 11 females



Due to Coronavirus Pandemic concerns the remaining broodstock collections for Walleye and Muskellunge were cancelled.

The PA Fish & Boat Commissions Linesville Hatchery provided NJ with 2.7 million eyed Walleye eggs on April 14th and 6,000 five-inch Muskellunge fingerlings in August. Hatchery trucks met a couple of times at the NJ/PA border to exchange fish.

We traded them 4,000 Northern Pike fingerlings and 222,000 Channel Catfish eggs.



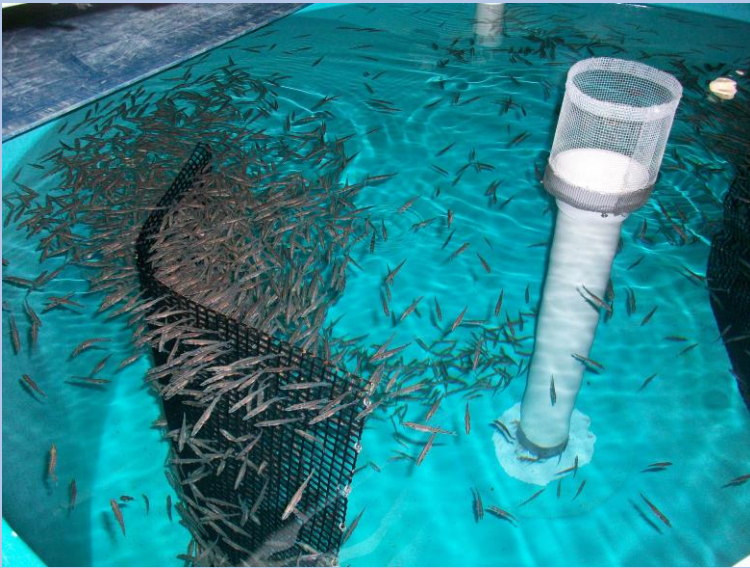


Esoscid – Northern Pike and Muskellunge

Northern Pike
27,715 six-inch
fingerlings

Muskellunge
4,160 twelve-inch
Spring Yearlings

Muskellunge
3,481 ten-inch
Fall Fingerlings





Walleye Stockings

1.8-inch fingerlings -328,142

4-inch fingerlings – 43,038

5 Inland Waters plus surplus to
the Delaware River



Hybrid Striped Bass

47,964 four-inch
Fingerlings stocked in three
inland waters.

Pond 60 produced a record
92,788 fingerlings – 22,000
reset to try and overwinter.



Largemouth Bass

108,796 two-inch fingerlings stocked

9,560 four-inch fingerlings stocked





Staff Collected 52 egg masses
over a million eggs.

Channel Catfish Stocked
6-inch fingerlings – 13,975
12-inch yearlings – 10,327
18-inch two-year old's – 1,005





3,230 five-inch Landlocked Salmon acquired from Massachusetts's Roger Reed Salmon Hatchery in a trade for 2,000 twelve-inch surplus Northern Pike.

Stocked 3,228 fish averaging 14.4-inches in four waters around November 1st.

Lake Aeroflex
Merrill Creek Reservoir
Tilcon Lake
Wawayanda Lake



Fin Clipping Salmon





Golden Shiners
Round Valley Reservoir
311,224 three-inch fish
321 pounds





Fathead Minnows
used for
Mosquito Control
240,000 fish
12 Counties





Trout Brood Dam Erosion Project – CBTM

Riprapped the first 100 yards upstream of the dam. Removed six dead trees above the dam to prevent clogging of open flood gates during storms. Widened and riprapped pond dykes between Trout Brook and Pond 42.

Total Cost - \$19,200.00





Old Education Pond Dredging CBTM Project

Remove soils and vegetation and
riprap the pond banks to protect from
erosion.

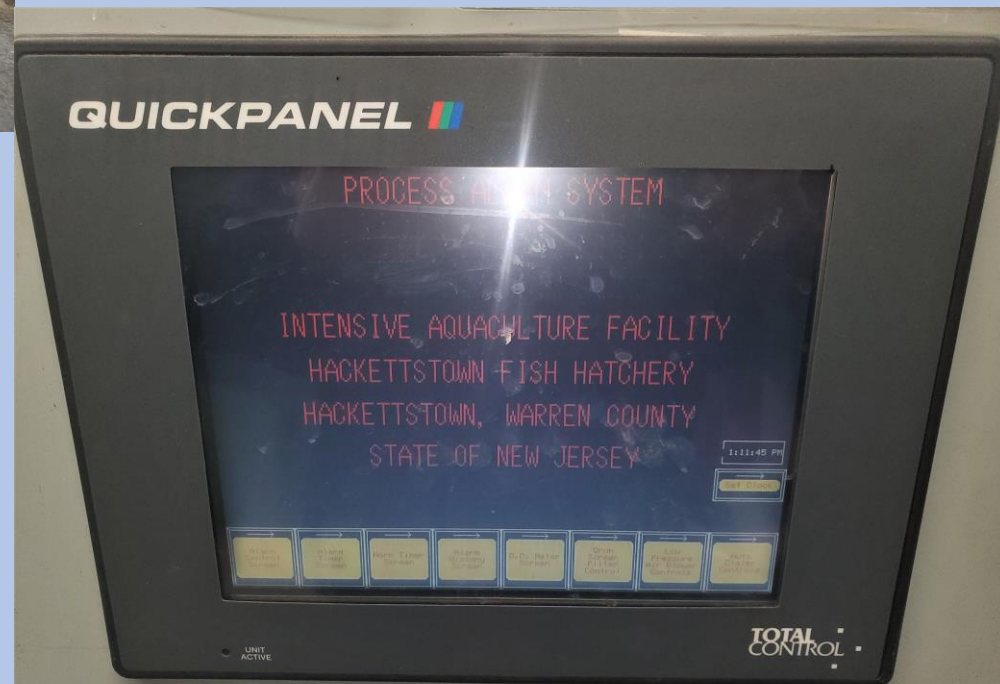
Total Cost - \$25,210.00

Ongoing CBT Projects – Corporate Business Tax



Demolition and rebuild of a five-bay storage garage –
Spring/Summer 2022.

Alarm System Upgrade in
the Intensive Fish Culture
Building - \$32,000
Spring 2022



Mountain Lake Structure Project





The Proposal ~ Fall 2018

- 24 Porcupine Cribs
- 10-15 foot
- Estimated \$2,800 in material
- ~\$115 each
- Clusters of 3-4

Mountain Lake

- Mountain Lake is 122-acre lake located in Warren Co.
- Recent Surveys
 - Trapnet Survey (Spring-2016)
 - Nighttime electrofishing survey (Fall-2016)
 - Daytime electrofishing survey (Fall-2018)
 - Seine Nets (Summer 2018)



- Muskellunge population at Mountain Lake is likely overly abundant.
- Growth rates are slow compared to the statewide standard.
 - Trap netting in 2016 did not capture one individual over 38 inches.
- The forage base consists of a stunted Bluegill population. (This can commonly occur within smaller waterbodies stocked with larger predators due to habitat and forage constraints.)
- The fishery is becoming affected, as forage species that were once common are either absent (Yellow Perch and Creek Chubsucker) or stunted (Bluegill).

Survey Results Showed



Management Recommendations

- Lower stocking rates for Muskellunge to 1 ten-inch Muskellunge per acre. (Occurred in 2020 & 2021)
- Improve habitat for forage fish. (Porcupine Cribs)
- Supplement forage through stockings
 - Yellow Perch (2017 & 2019)
 - Black Crappie (2018)
 - Golden Shiner (2018 & 2019)



Summer 2019
~ 4 Cribs Built





Fall 2019

Trial Run





DEERE

LIBERTY
D.P.W.
TOWNSHIP

NJ1387HB

NJ
Fish and Wildlife

Oct 29th, 2019 First Deployment



IT Floats!



Summer 2021



10-Mile Delivery to the lake



October 19th, 2021



Some Assembly Required



Some Assembly Required





Special thanks to
Liberty Township
DPW



Load, Deploy, Repeat

Deployment





The Final Outcome

- 22 Porcupine Cribs
- 10-15ft contour lines
- \$250.00 each
- \$5,500 Total material cost
- All paid for by Musky Inc.



Porcupine Cribs Benefits – HABITAT!

- Porcupine Cribs are designed to increase habitat for younger fish
- Cribs offer safe structures where prey species can escape from predators allowing them to survive, grow, mature, and ultimately reproduce. Adding to the forage base for all predators including Largemouth Bass and Muskellunge.