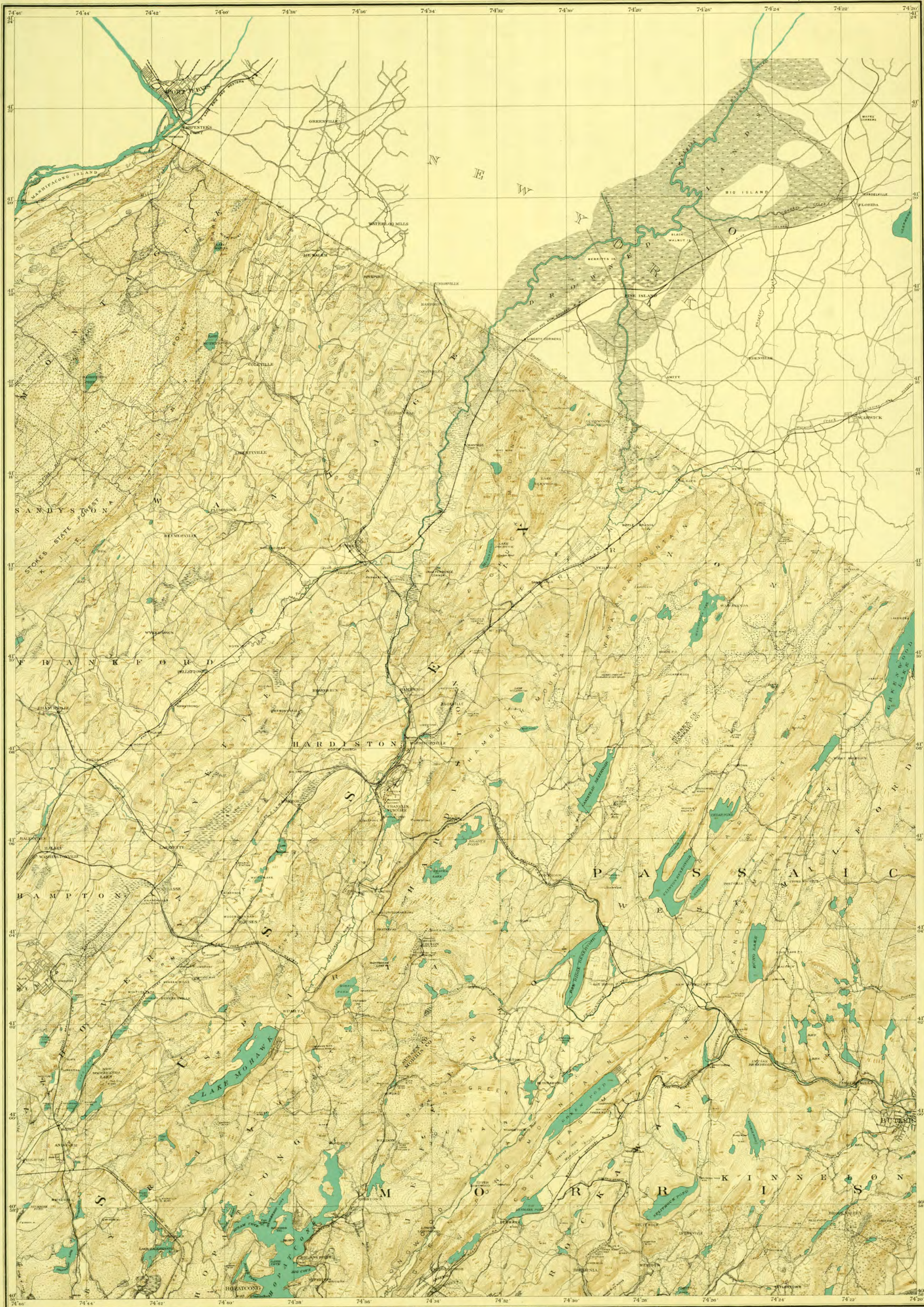


STATE OF NEW JERSEY
DEPARTMENT OF CONSERVATION AND DEVELOPMENT

SHEET 22
DIVISION OF GEOLOGY AND TOPOGRAPHY
MEREDITH E. JOHNSON, State Geologist

CHARLES P. WILBER, Director

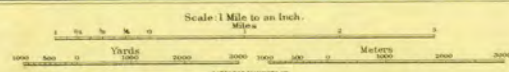
ORIGINAL SURVEY, 1880 AND 1883
PRINCIPAL FEATURES REVISED, 1909, 1928
EDITION OF 1939



NOTE: The contour lines are level lines drawn on the earth's surface. All points through which they pass are at the same level and their height above sea level is shown by the figures on the line. The rise or fall from any line to the next is, on the average, 20 feet. Figures on any line show the actual elevation of the surface at a point indicated by a small cross.

KEY TO ADJOINING SHEETS

21	22	23
24	25	26



- From Original Surveys and Levellings:
Based on the Triangulation of the U. S. Coast and Geodetic Survey.
- ▲ MARKET IRON-ORE MINES
 - ▲ HEAVY & LIGHT MINES
 - ▲ QUARRIES
 - ▲ RAILROAD-ROADS
 - ▲ RAILROAD-ROADS

ORIGINAL SURVEY AND REVISIONS TO 1909 MADE UNDER
DIRECTION OF C. C. VERMEULE, TOPOGRAPHER, REVISION OF 1928
BY L. P. PLUMMER, TOPOGRAPHIC ENGINEER.

NOTE: BOUNDARY LINES REVISED TO 1931

PERMANENT FILE
 THESE MAPS FOR REFERENCE ONLY