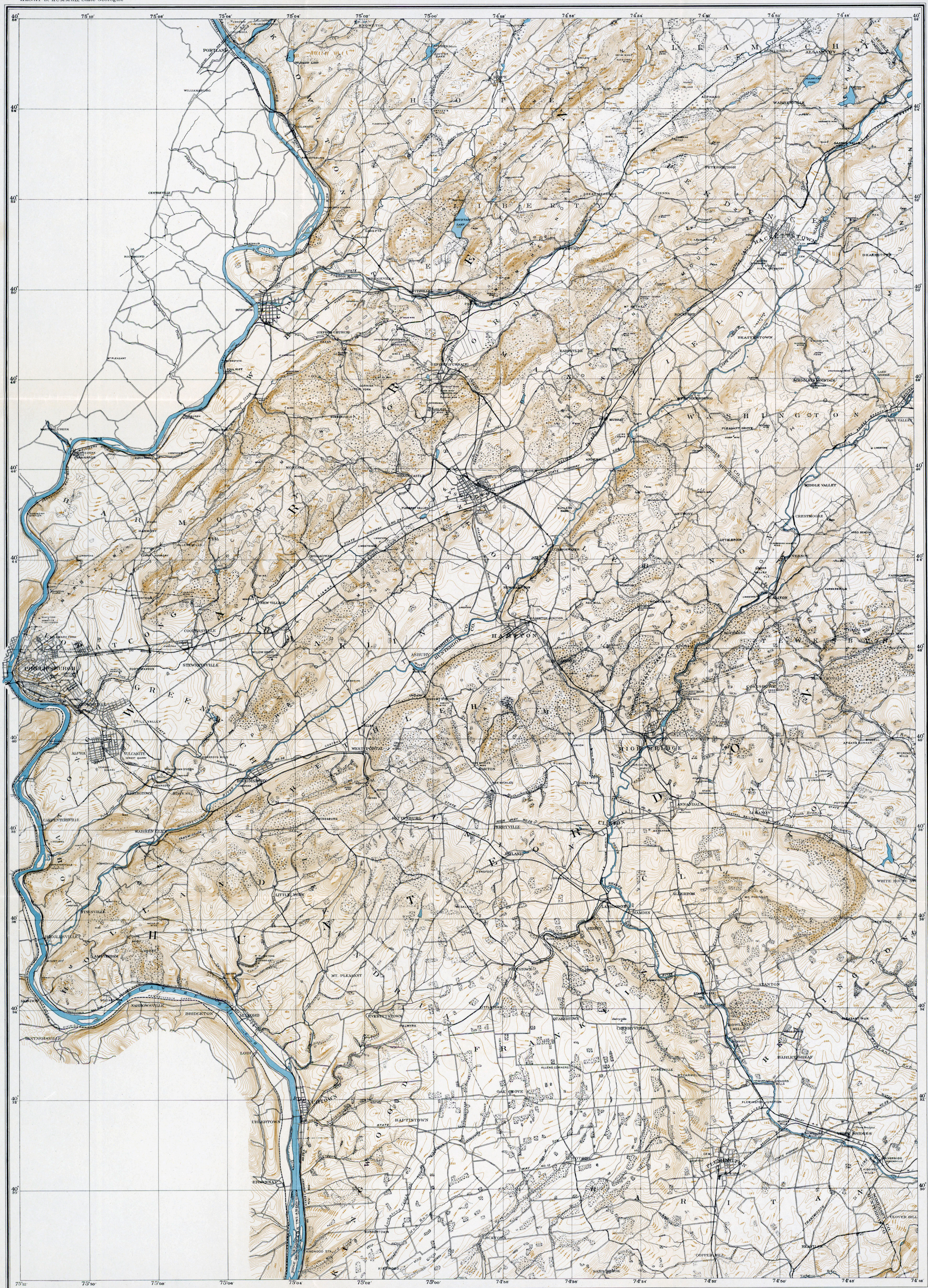


STATE OF NEW JERSEY
DEPARTMENT OF CONSERVATION AND DEVELOPMENT
ATLAS SHEET No. 24

SHEET 24
DIVISION OF GEOLOGY AND TOPOGRAPHY
HENRY B. KÜMMEL, State Geologist

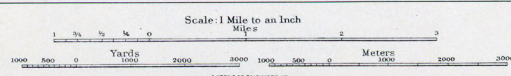
ORIGINAL SURVEY, 1882 AND 1883
PRINCIPAL FEATURES REVISED, 1903, 1920, 1929, 1936
EDITION OF 1936



NOTE: The curved lines are level lines drawn on the earth's surface. All points through which any given line passes are at the same level and their height above mean sea level is shown by the figures on the line. The rise or fall from any line to the next is, as the figures will show or tell. Figures not on any line show the actual elevation of the surface at a point indicated by a small cross.

KEY TO ADJOINING SHEETS

21	22
24	25
27	28



From Original Surveys and Levellings.
Based on the Triangulation of the U. S. Coast and Geodetic Survey.

LEGEND

- MAINTENANCE OF RAILROADS
- RAILROAD STATIONS

ORIGINAL SURVEY AND REVISIONS TO 1903 MADE UNDER DIRECTION OF
C. G. VERMEULE, TOPOGRAPHER. REVISION OF 1920 BY HENRY B. KÜMMEL.
REVISION OF 1936 BY L. P. PLUMMER, TOPOGRAPHIC ENGINEER.