



State of New Jersey  
Department of Environmental Protection  
Geological Survey



**Information Disclaimer**

The State of New Jersey makes great effort to provide secure, accurate and complete information. However, portions of the information contained here may be incorrect or not current.

The State of New Jersey, its officers, employees or agents shall not be liable for damages or losses of any kind arising out of or in connection with the use or performance of information, including but not limited to, damages or losses caused by reliance upon the accuracy or timeliness of any such information, or damages incurred from the viewing, distributing, or copying of those materials.

The materials and information provided here are provided "as is." No warranty of any kind, implied, expressed, or statutory, including but not limited to the warranties of non-infringement of third party rights, title, merchantability, fitness for a particular purpose, and freedom from computer virus, is given with respect to the contents of this document.

Timeline

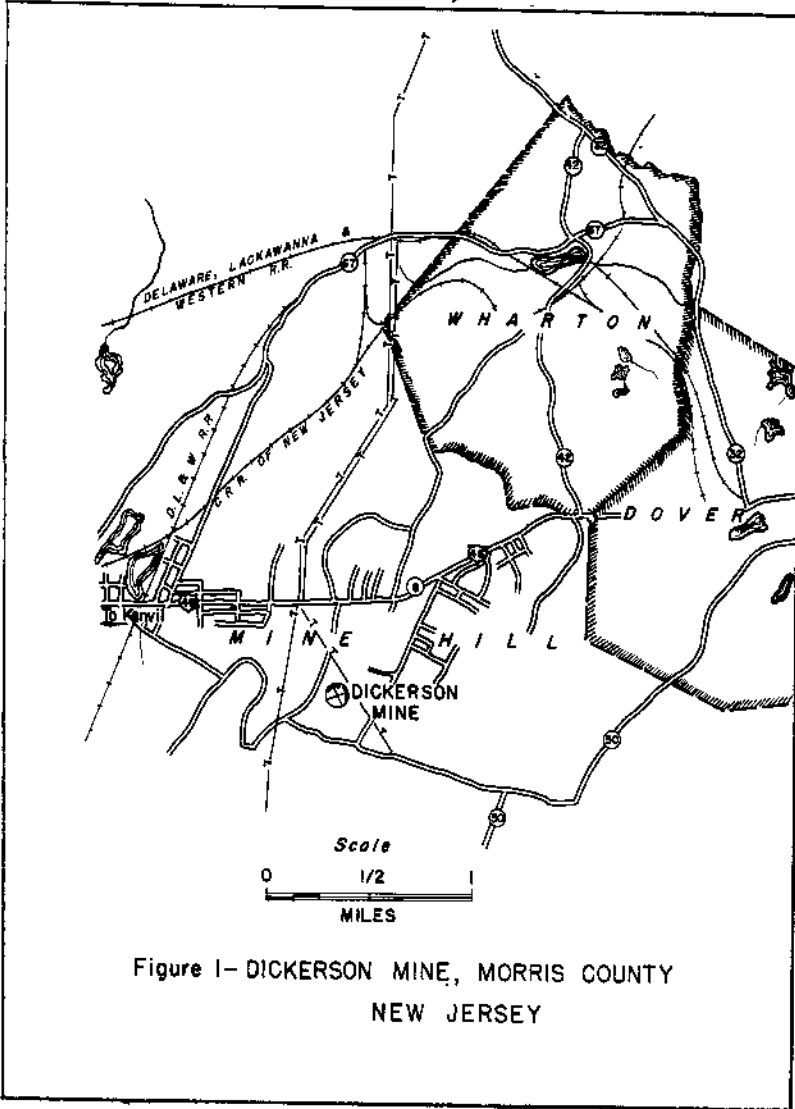
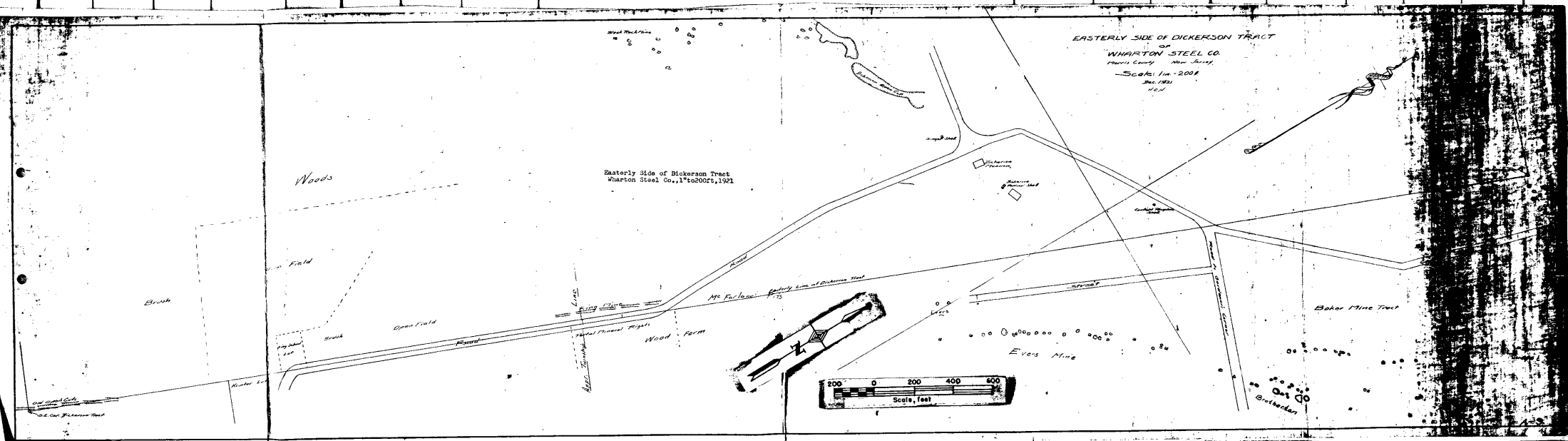


Figure 1- DICKERSON MINE, MORRIS COUNTY  
NEW JERSEY

30002 325 | 14.5:1 | 300754



NJGS 03145 28 26X 354136

CLASS OF CANFIELD AS 200.  
DIPPOSITE THIS TRACT

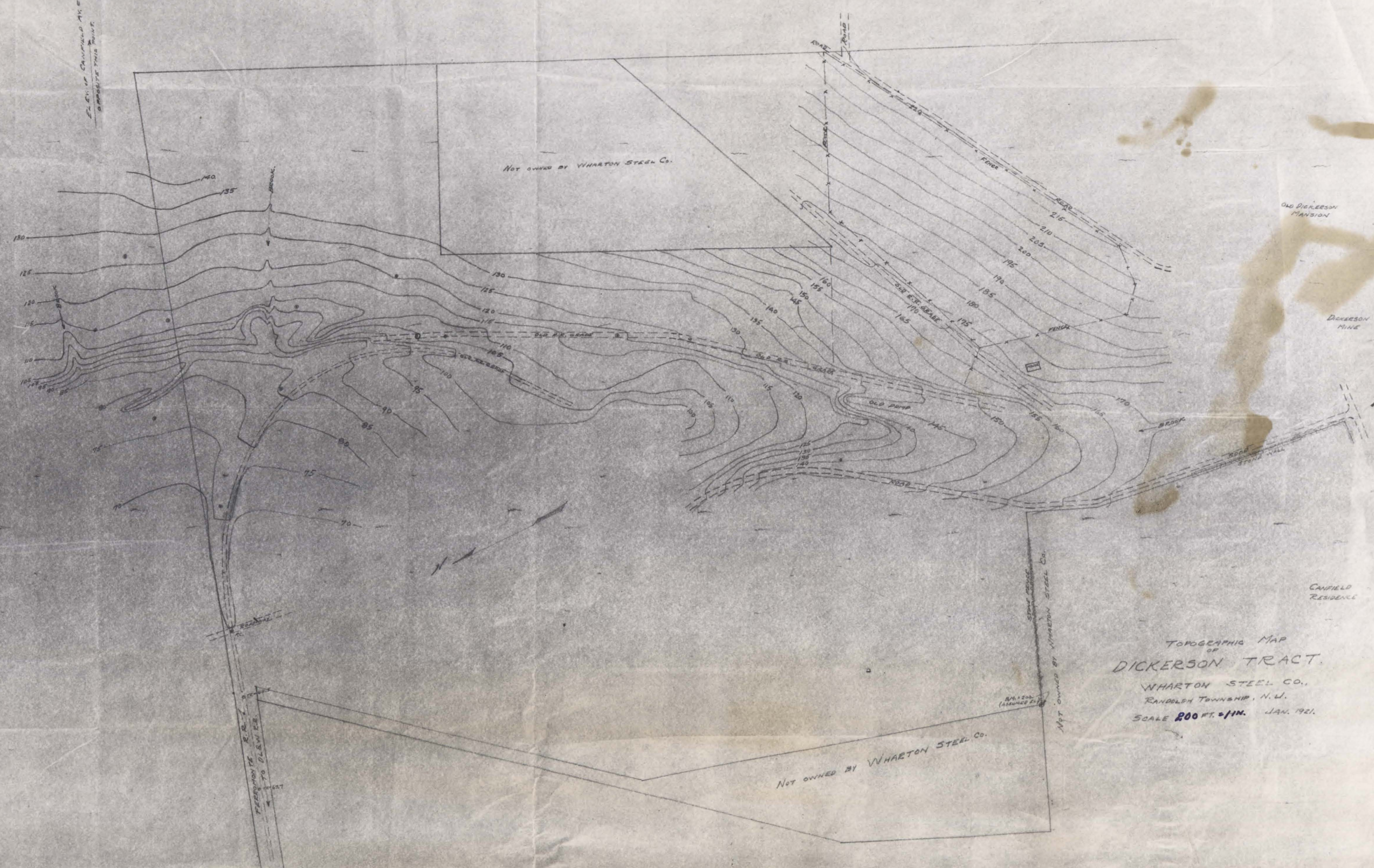
BAKER MINE TRACT.

NOT OWNED BY WHARTON STEEL CO.

OLD DICKERSON MANSION

DICKERSON MINE

CANFIELD RESIDENCE



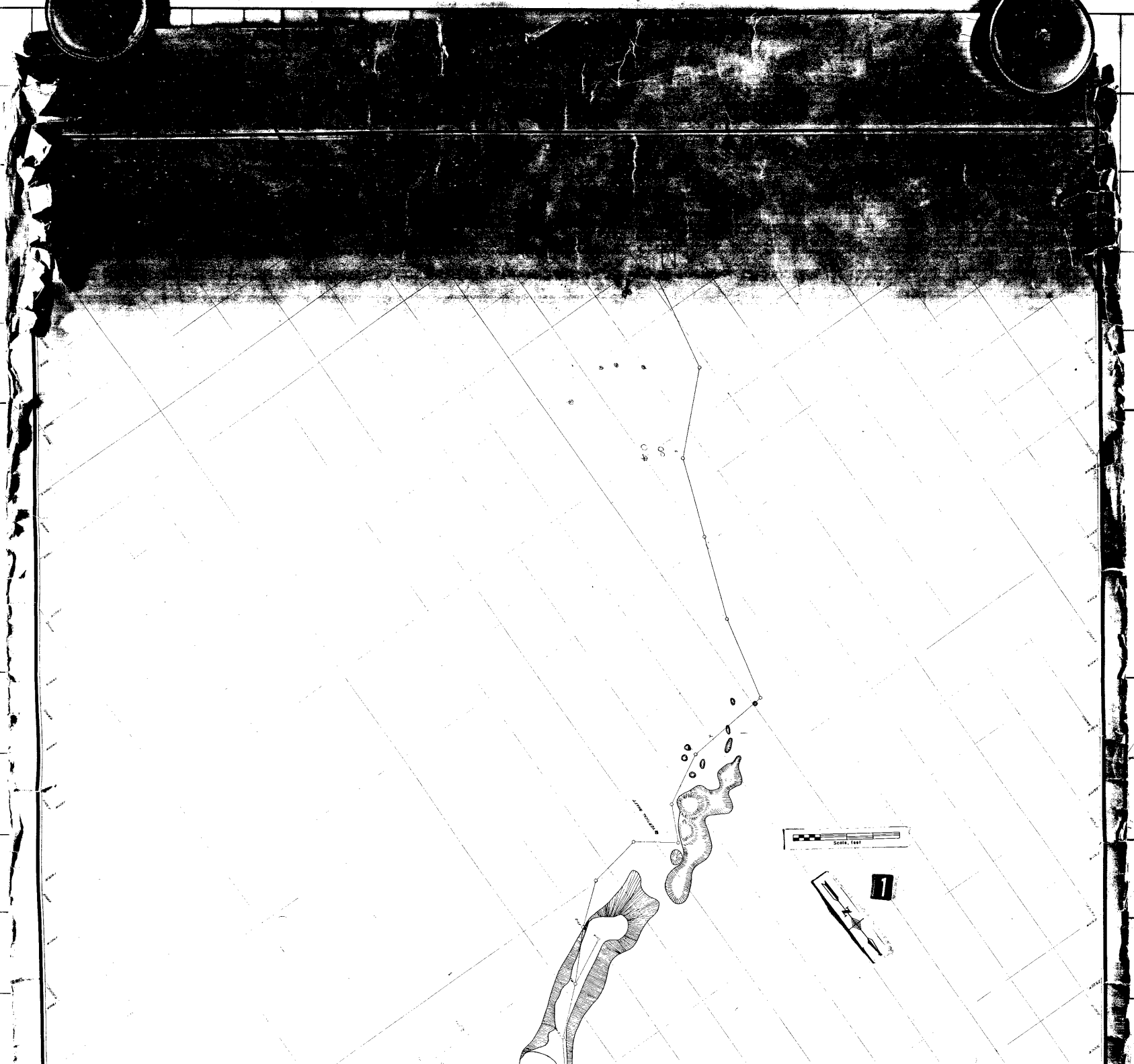
TOPOGRAPHIC MAP  
OF  
DICKERSON TRACT.  
WHARTON STEEL CO.,  
RANDOLPH TOWNSHIP, N. J.  
SCALE 200 FT. = 1 IN. JAN. 1921.

NOT OWNED BY WHARTON STEEL CO.

NOT OWNED BY WHARTON STEEL CO.

FERRONITE R.R. TO DICKERSON

AM. S. CO. (ASSUMED EL.)



D.D.H. M9  
DICKERSON TRACT  
-45° 1' = 30'

WARREN FOUNDRY & PIPE CORP.  
MT. HOPE MINE  
WHARTON, N.J.

DATE: OCT. 28, 1942.  
COMP. DRWG'S: M10

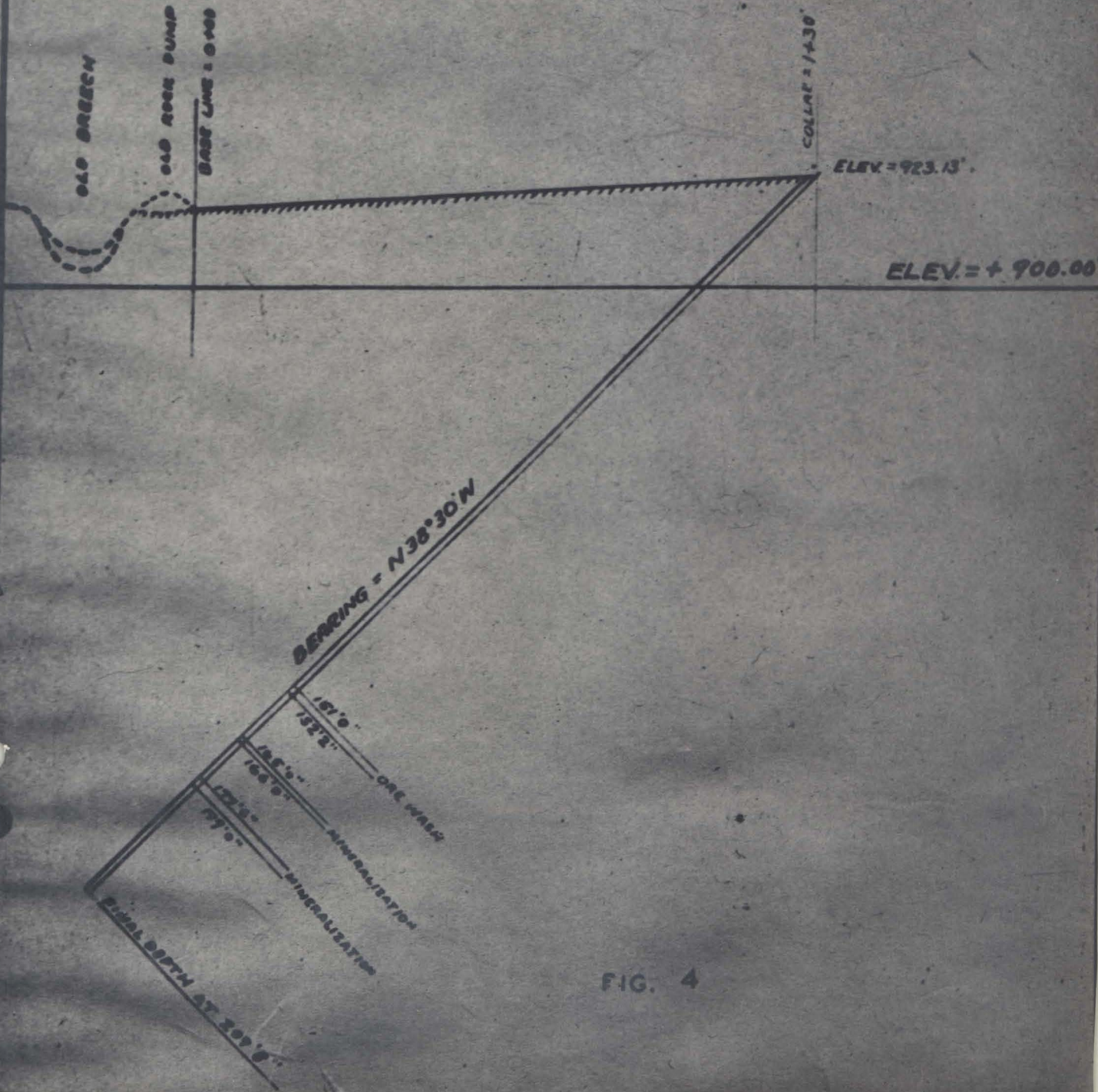
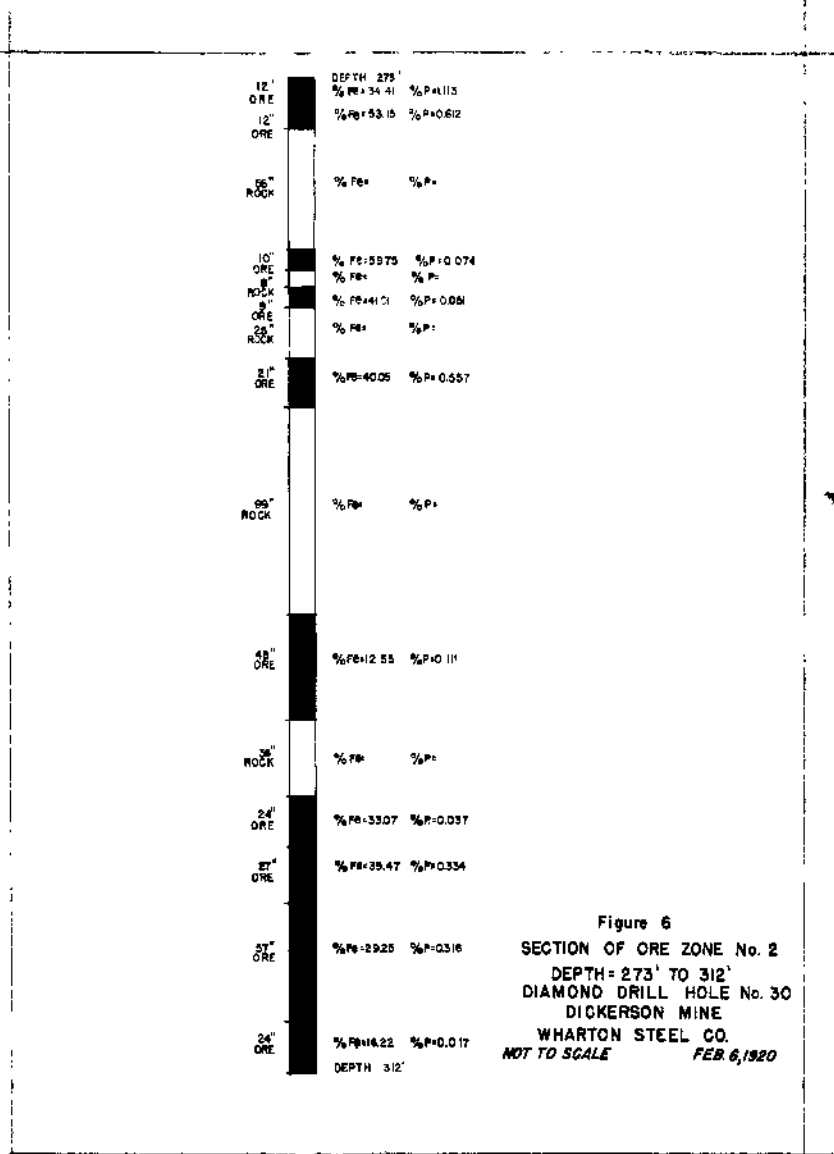


FIG. 4



30002

320

14.5:1

300749