



State of New Jersey
Department of Environmental Protection
Geological Survey

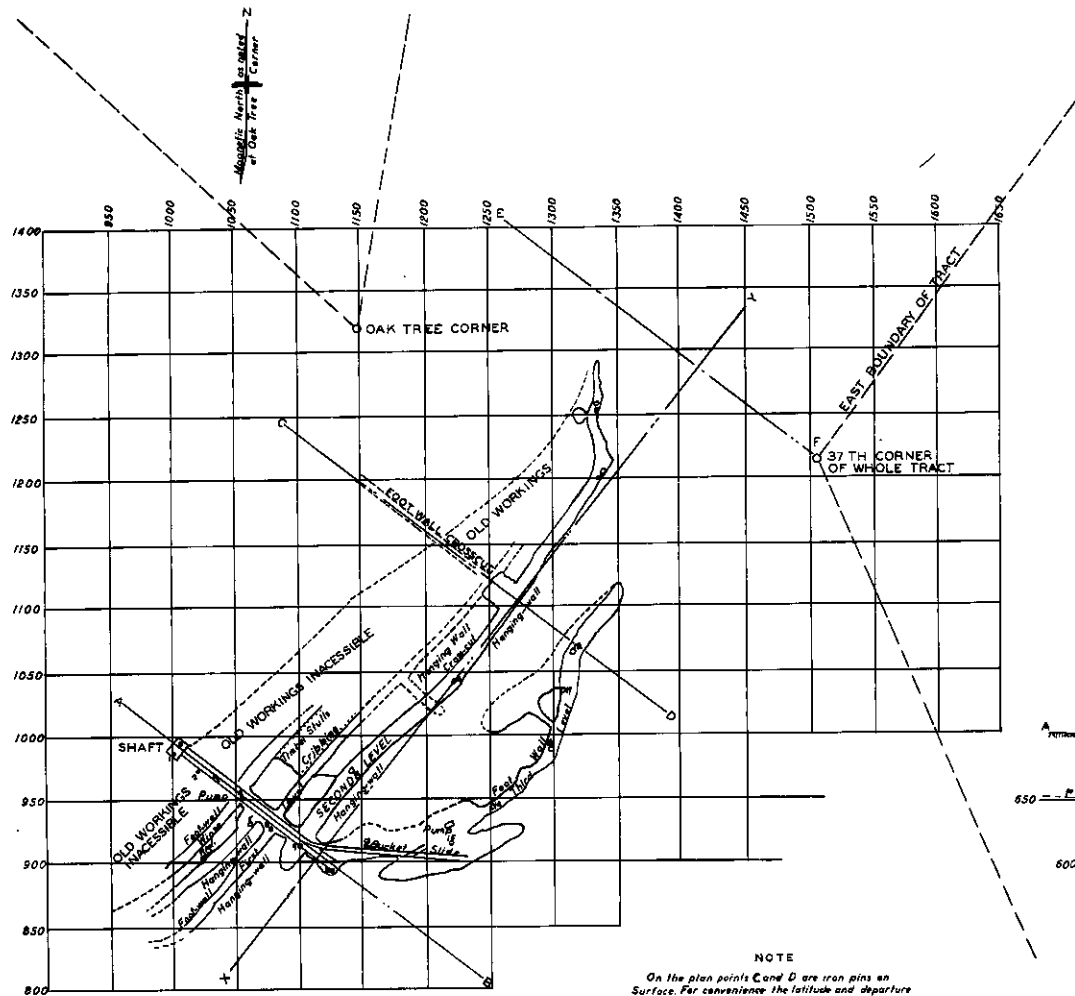


Information Disclaimer

The State of New Jersey makes great effort to provide secure, accurate and complete information. However, portions of the information contained here may be incorrect or not current.

The State of New Jersey, its officers, employees or agents shall not be liable for damages or losses of any kind arising out of or in connection with the use or performance of information, including but not limited to, damages or losses caused by reliance upon the accuracy or timeliness of any such information, or damages incurred from the viewing, distributing, or copying of those materials.

The materials and information provided here are provided "as is." No warranty of any kind, implied, expressed, or statutory, including but not limited to the warranties of non-infringement of third party rights, title, merchantability, fitness for a particular purpose, and freedom from computer virus, is given with respect to the contents of this document.



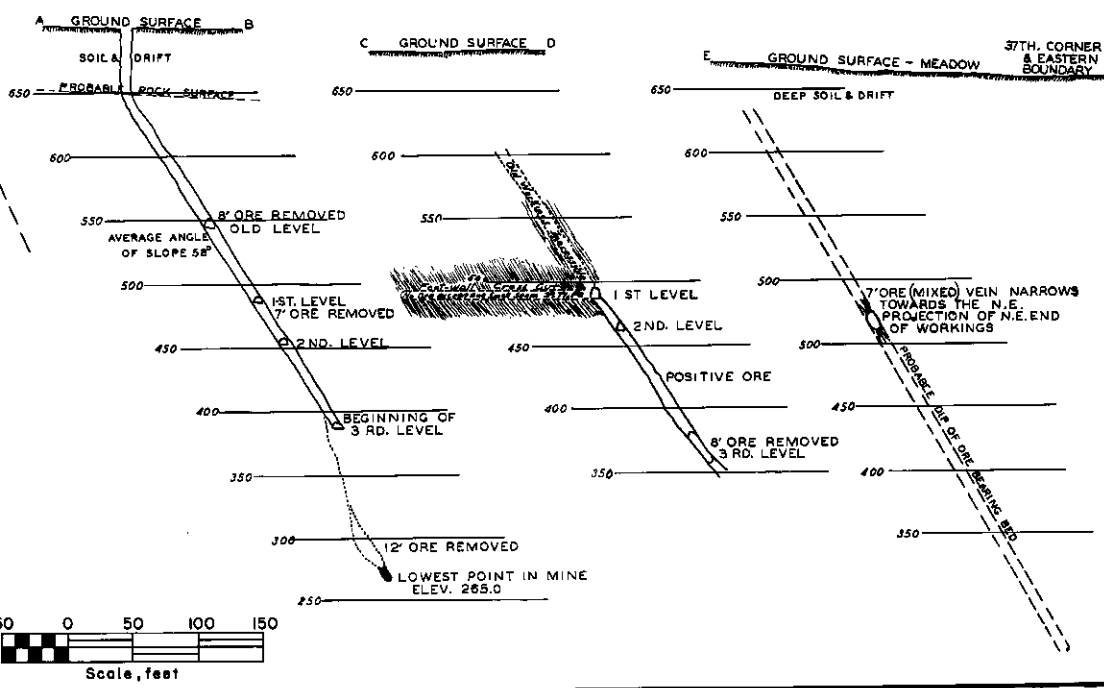
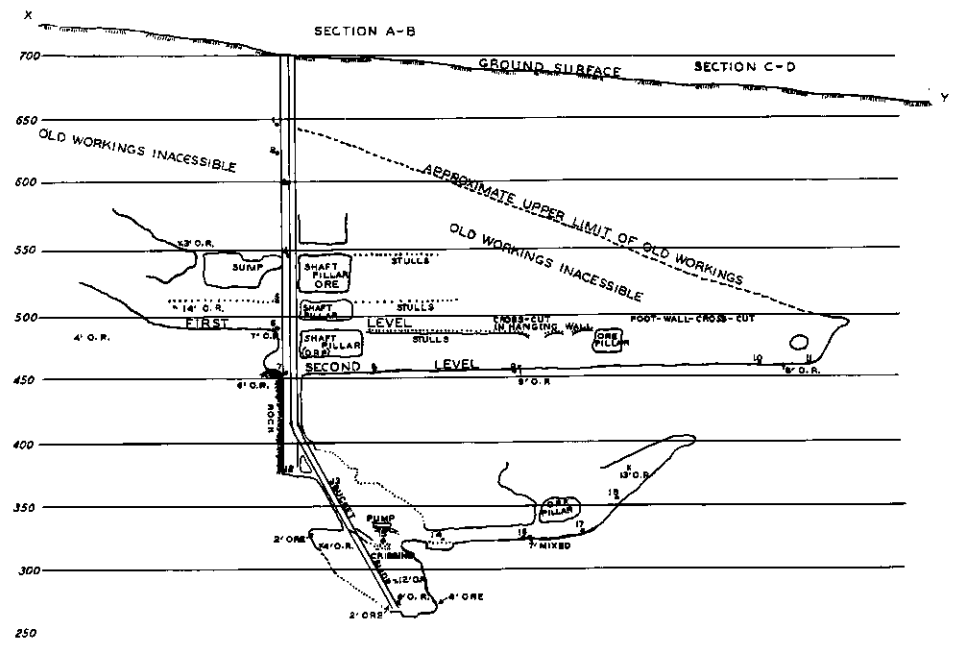
PLAN

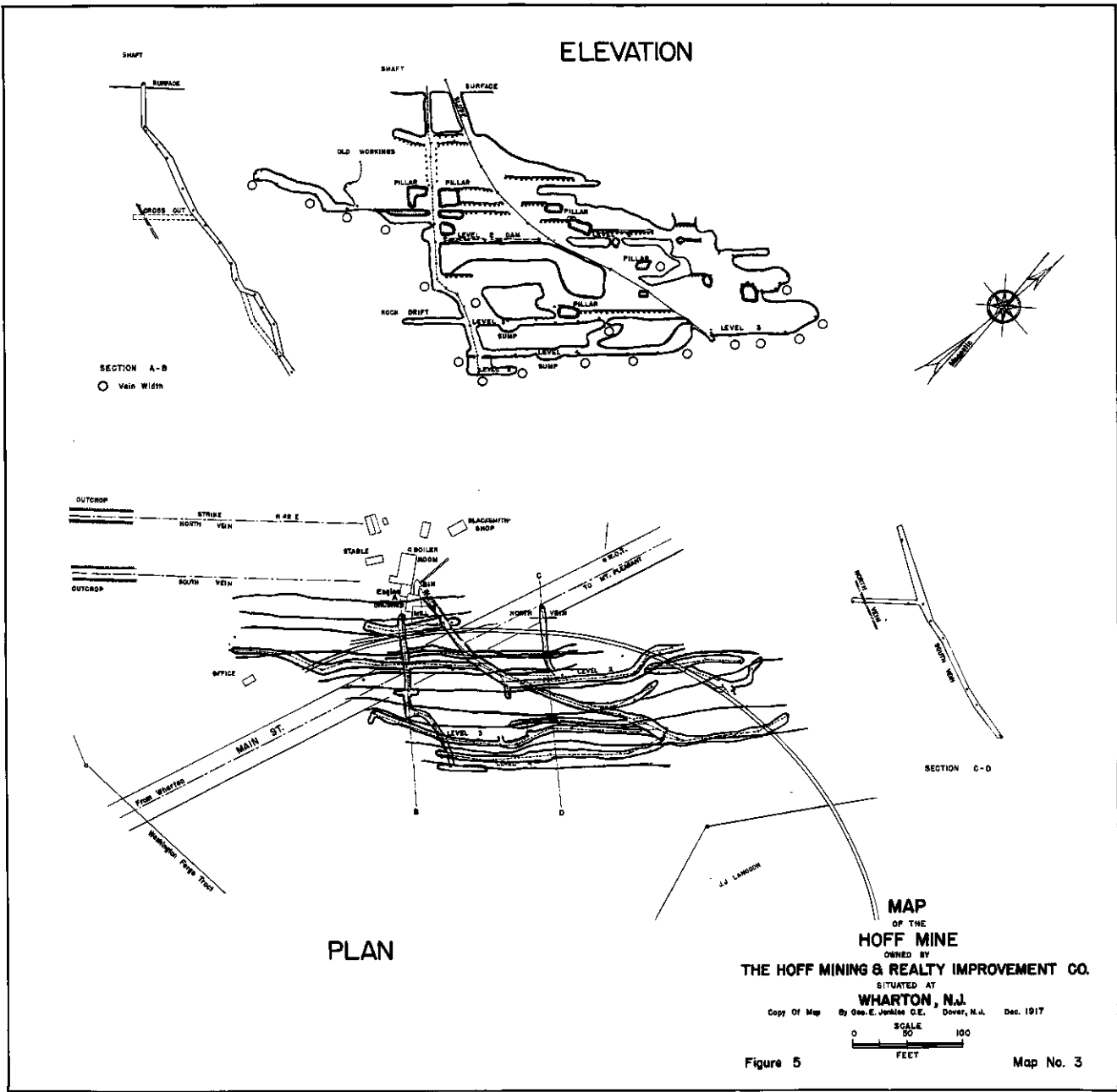
NOTE
On the plan points C and D are iron pins on surface. For convenience the latitude and departure of D is assumed as 1000. Meas'd 1000 E. The elevation of D is assumed as 700 above sea level which is nearly correct.

- ORE ACTUALLY EXPOSED
- ORE REMOVED
- PROBABLE OUTLINE OF ORE CHUTES
- PROPERTY LINES
- SURVEY LINES AND POINTS
- GNEISS ROCK

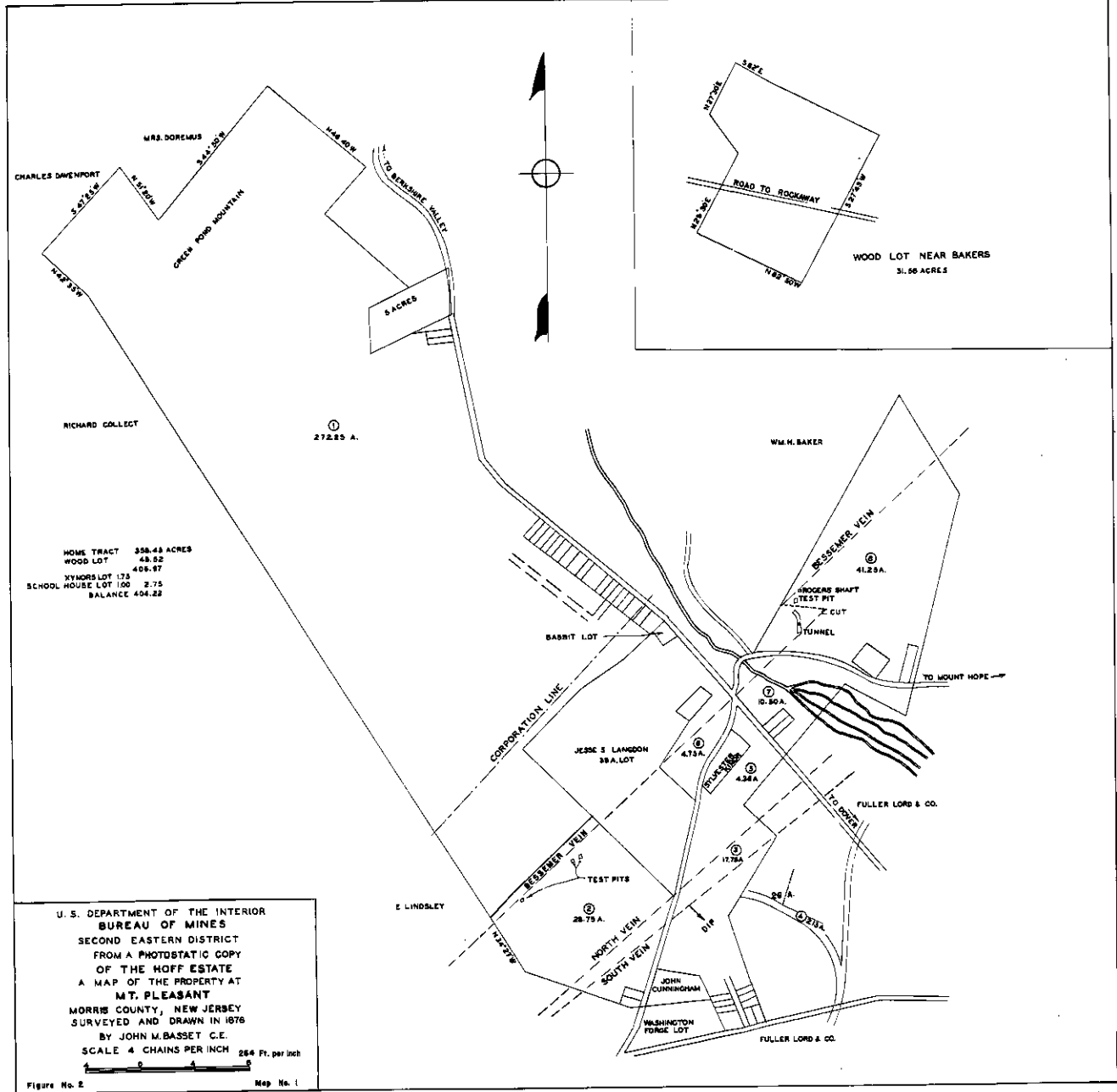
FIGURE 4
U.S. DEPARTMENT OF THE INTERIOR
BUREAU OF MINES
SECOND EASTERN DISTRICT
PLAN & SECTIONS OF THE HOFF MINE WHARTON, N.J.
SCALE 1"=50 FT.

FROM SURVEYS BY
GUMINGS & INGALSBEE
JANUARY 1911





300499



U. S. DEPARTMENT OF THE INTERIOR
 BUREAU OF MINES
 SECOND EASTERN DISTRICT
 FROM A PHOTOSTATIC COPY
 OF THE HOFF ESTATE
 A MAP OF THE PROPERTY AT
 MT. PLEASANT
 MORRIS COUNTY, NEW JERSEY
 SURVEYED AND DRAWN IN 1876
 BY JOHN M. BASSET C.E.
 SCALE 4 CHAINS PER INCH 264 Ft. per inch

Figure No. 2 Map No. 1

300500