



State of New Jersey  
Department of Environmental Protection  
Geological Survey

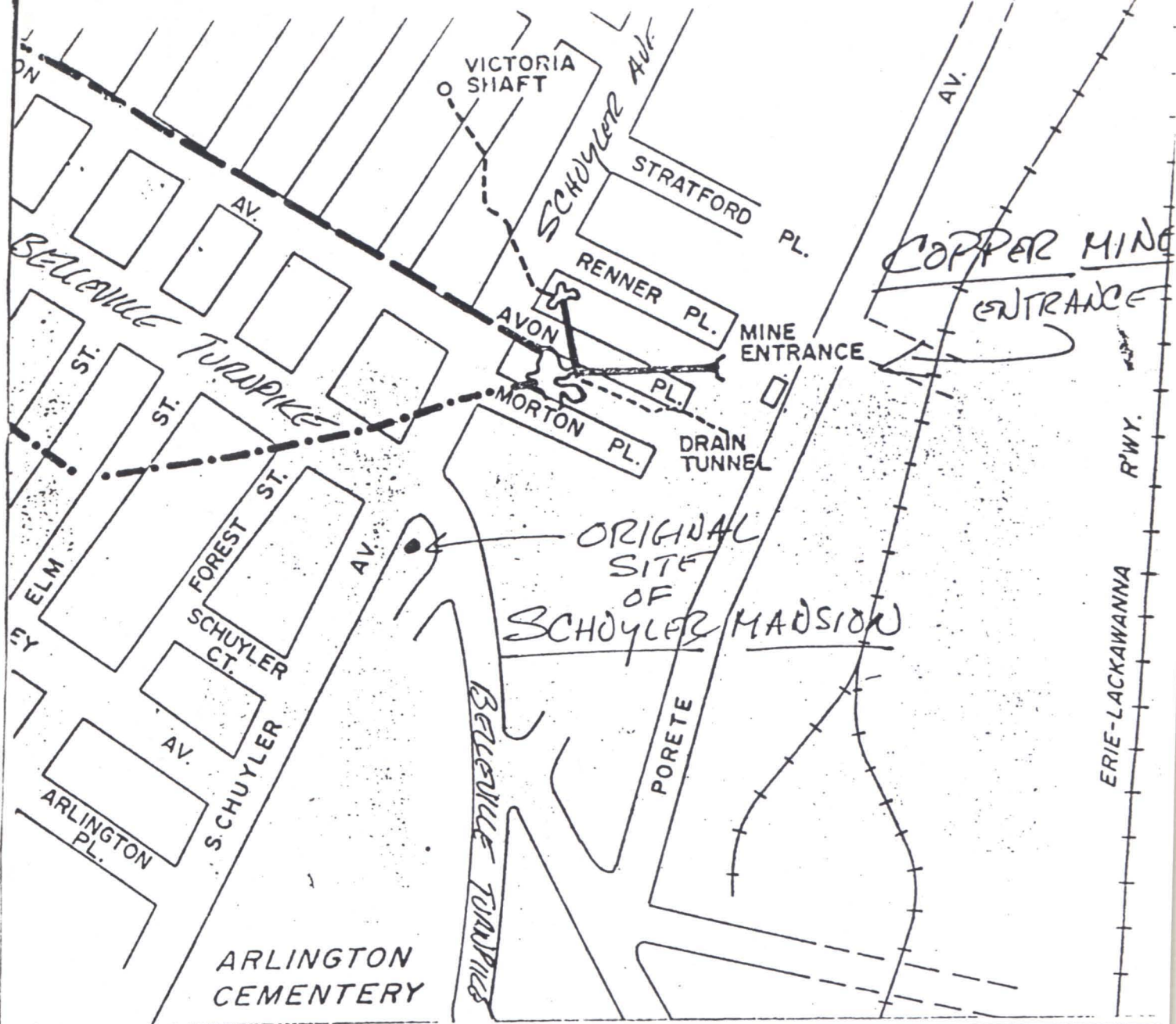


**Information Disclaimer**

The State of New Jersey makes great effort to provide secure, accurate and complete information. However, portions of the information contained here may be incorrect or not current.

The State of New Jersey, its officers, employees or agents shall not be liable for damages or losses of any kind arising out of or in connection with the use or performance of information, including but not limited to, damages or losses caused by reliance upon the accuracy or timeliness of any such information, or damages incurred from the viewing, distributing, or copying of those materials.

The materials and information provided here are provided "as is." No warranty of any kind, implied, expressed, or statutory, including but not limited to the warranties of non-infringement of third party rights, title, merchantability, fitness for a particular purpose, and freedom from computer virus, is given with respect to the contents of this document.



TED INGS, Chairman of the Schuyler Foundation is in error. "Fairlawn" the Schuyler Mansion was about the intersection of Passaic Ave. and Belleville Turnpike.

▲ ROUTES SHOWN

K'D The mansion overlooked Passaic River.

DRAWN BY R.P

CHECKED BY R.J.

APPROVED BY

SCALE

DATE JUNE, 1978

But, Schuyler Mines were at location here marked, near Schuyler Ave. and Belleville Turnpike.

# PLAN PREPARED FOR SCHUYLER HISTORICAL FOUNDATION

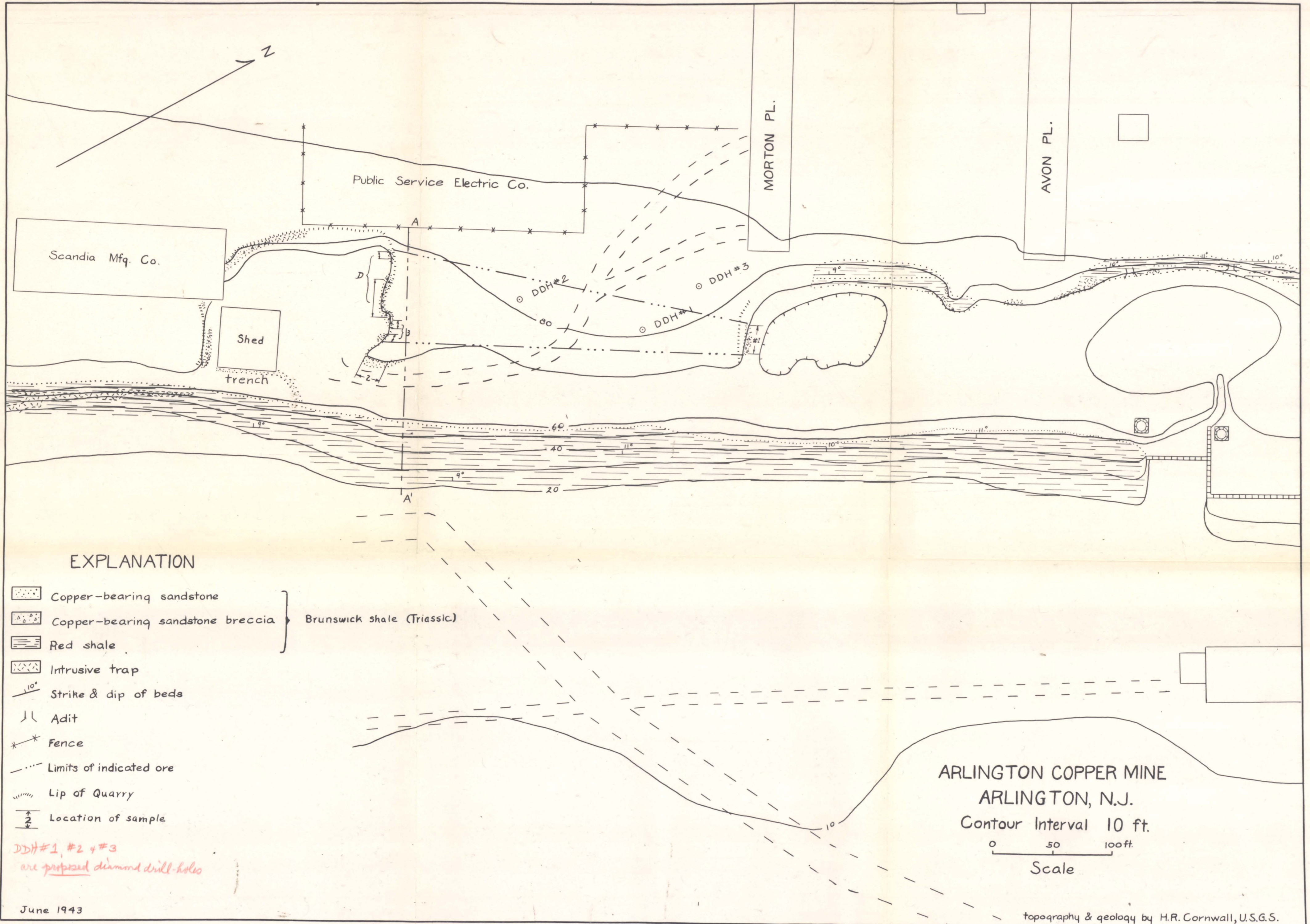


JENNY ENGINEERING  
CORPORATION

CONSULTING ENGINEERS  
SOUTH ORANGE, N.J.

FILE NO.

DWG. NO. 1 OF 1



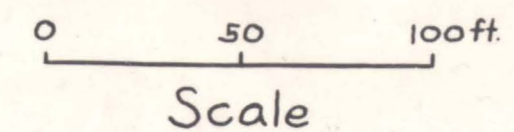
EXPLANATION

- Copper-bearing sandstone
  - Copper-bearing sandstone breccia
  - Red shale
- } Brunswick shale (Triassic)

- Intrusive trap
- Strike & dip of beds
- Adit
- Fence
- Limits of indicated ore
- Lip of Quarry
- Location of sample

DDH #1, #2 & #3  
are proposed diamond drill-holes

ARLINGTON COPPER MINE  
ARLINGTON, N.J.  
Contour Interval 10 ft.



June 1943

topography & geology by H.R. Cornwall, U.S.G.S.

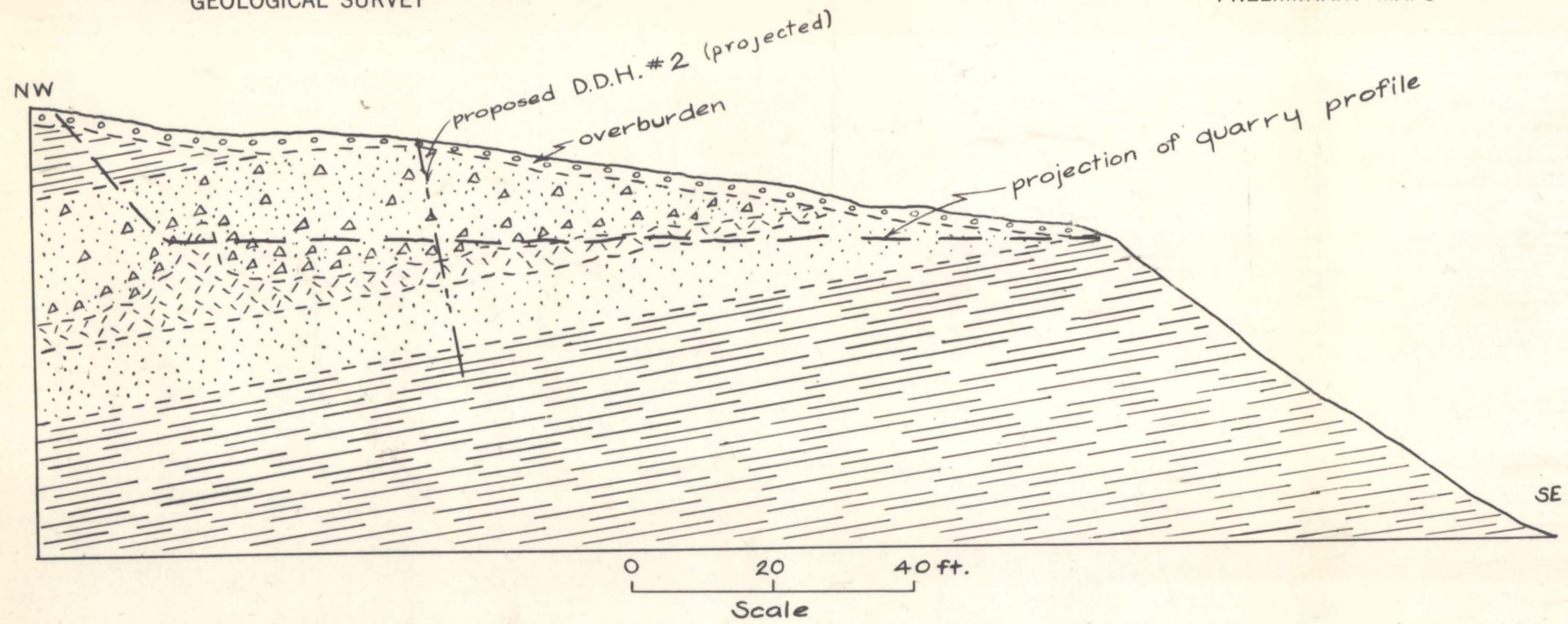


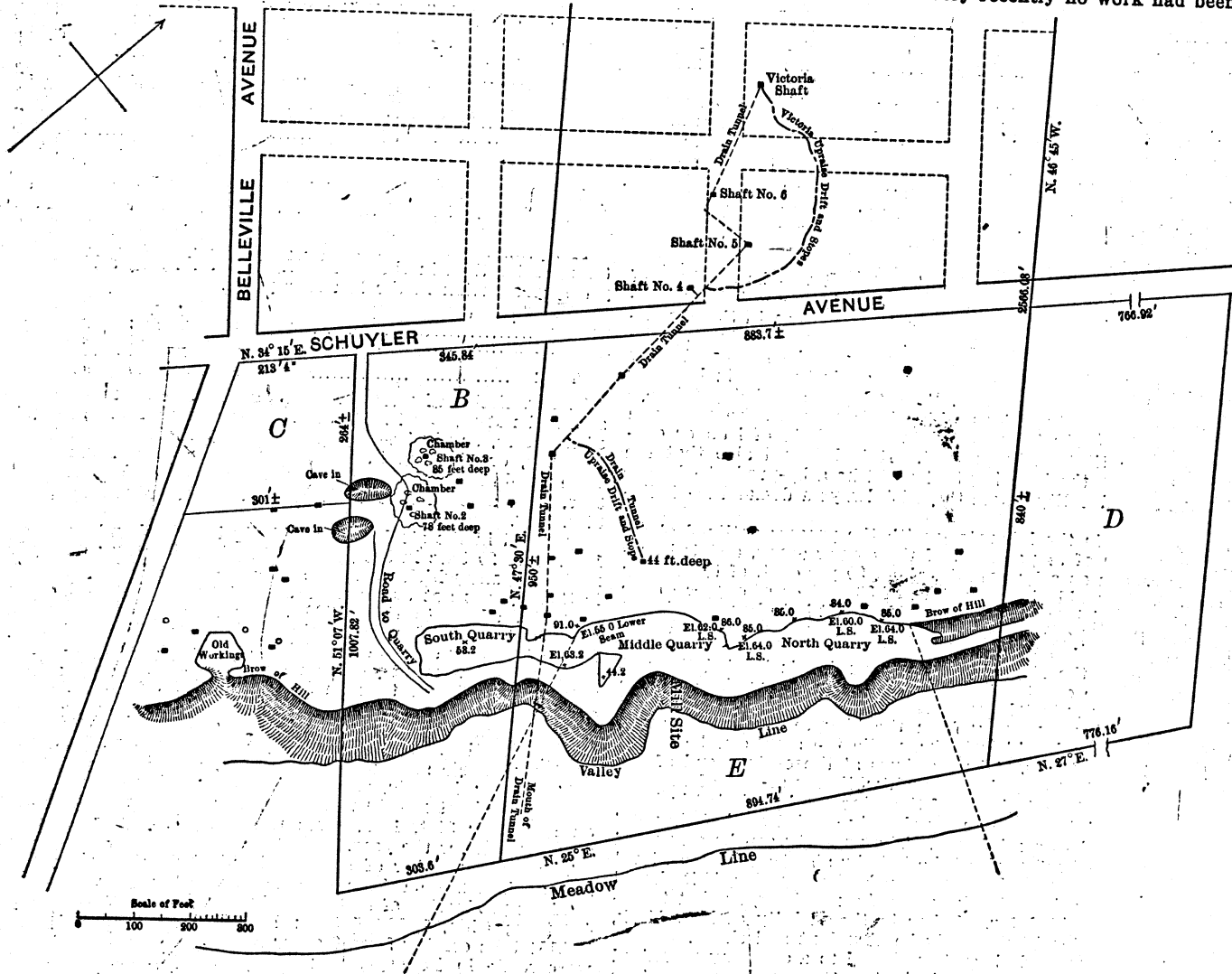
Fig. 1 Cross-section A-A', Arlington Copper Mine. Explanation same as Plate I. Mineralization apparently most intense immediately above trap.

H. R. Cornwall, June 1943

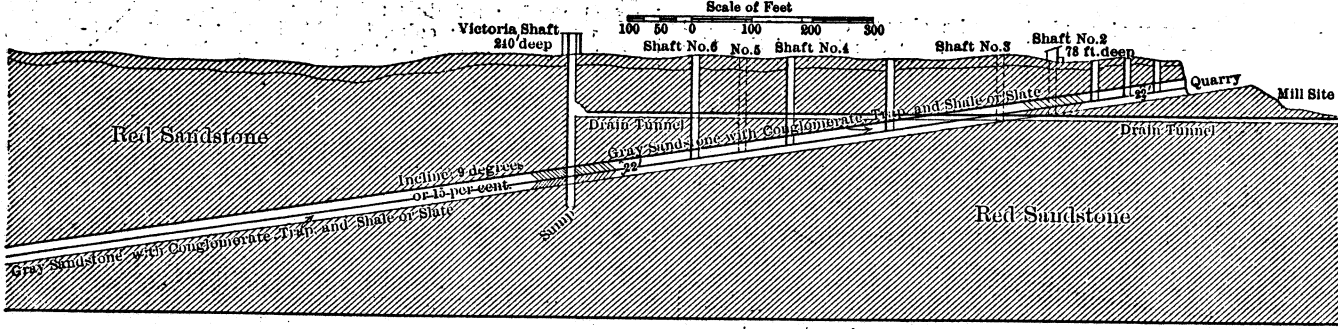
# THE SCHUYLER COPPER MINES, NEW JERSEY.

Very few people are aware that one of the oldest copper mines in the United States is situated within sight of New York City. This is the property which has been locally known for many years as the old Schuyler Copper Mine. It is located in the town of North Arlington, in Bergen County, New Jersey, in the low ridge which separates the valley of the Passaic River from the wide expanse of salt meadows, which extend on both sides of the Hackensack River, and surround the upper end of Newark Bay. The mine is about 8 miles from the Hudson River, and lies about 1 mile south of the point where the Greenwood Lake Branch of the Erie Railroad crosses the ridge already mentioned, about 2 miles north of the track of the Newark Branch of the Erie, and

Watt, and was set up and operated by Mr. Hewitt, father of Mr. Abram S. Hewitt, who had been employed in the English shops. The working of the Schuyler Mine was continued somewhat irregularly, and by various owners. About 1794 the property was held for a time by the New Jersey Copper Mine Association, but with all the changes in operation, the title remained in the Schuyler family. The extent of these operations may be understood from the fact that at different times 32 shafts were sunk upon the property, and a tunnel was run in from the eastern slope of the hill for a considerable distance. The deepest shaft is that known as the Victoria, which was carried down 240 ft. The different shafts are shown upon the accompanying map, while the sectional drawing gives a section along the line of the drainage tunnel. Until very recently no work had been done on



VERTICAL SECTION ON APPROXIMATELY THE COURSE OF DRAIN TUNNEL



SCHUYLER COPPER MINE, ARLINGTON, NEW JERSEY.

about 2 1/4 miles from the point where the Delaware, Lackawanna & Western Railroad crosses the Passaic River, and enters the city of Newark.

The fact that copper existed at this point was first discovered between 1695 and 1700, by Arent Schuyler, who owned a large tract of land on the east bank of the Passaic River, under a Colonial grant. The exact date when he first began to work the deposit is not known, but it was probably about 1700. No attempt was then made to smelt the ore, but considerable quantities were mined and shipped to Great Britain. At a later date some smelting work was attempted, and after the Revolution a smelter and rolling mill are said to have been erected on the west side of the Passaic River, not far from the village of Belleville. These works stood on the site of the old mill

the mines for over 40 years, and for a number of years before that the operations had been only occasional and desultory. Since 1858 no attempt had been made to take out any copper ore; the shafts had filled with water, and the tunnel workings were obstructed by rubbish and fallen stone. On the eastern face of the hill, however, a quarry had been established, and a considerable quantity of sandstone taken out.

Recently this property was purchased by parties who believed that it could be worked at a profit for the copper values. The old tunnels and some of the old chambers from which ore had been stoped out were cleared out; the Victoria shaft—the deepest on the property—unwatered and the property put in a position where a careful examination could be made. Three experts have made such an examination. Prof. Robert

