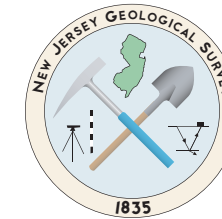
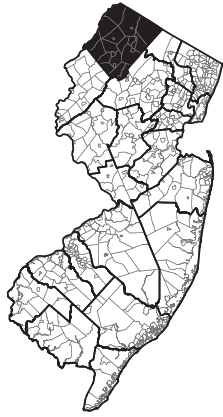
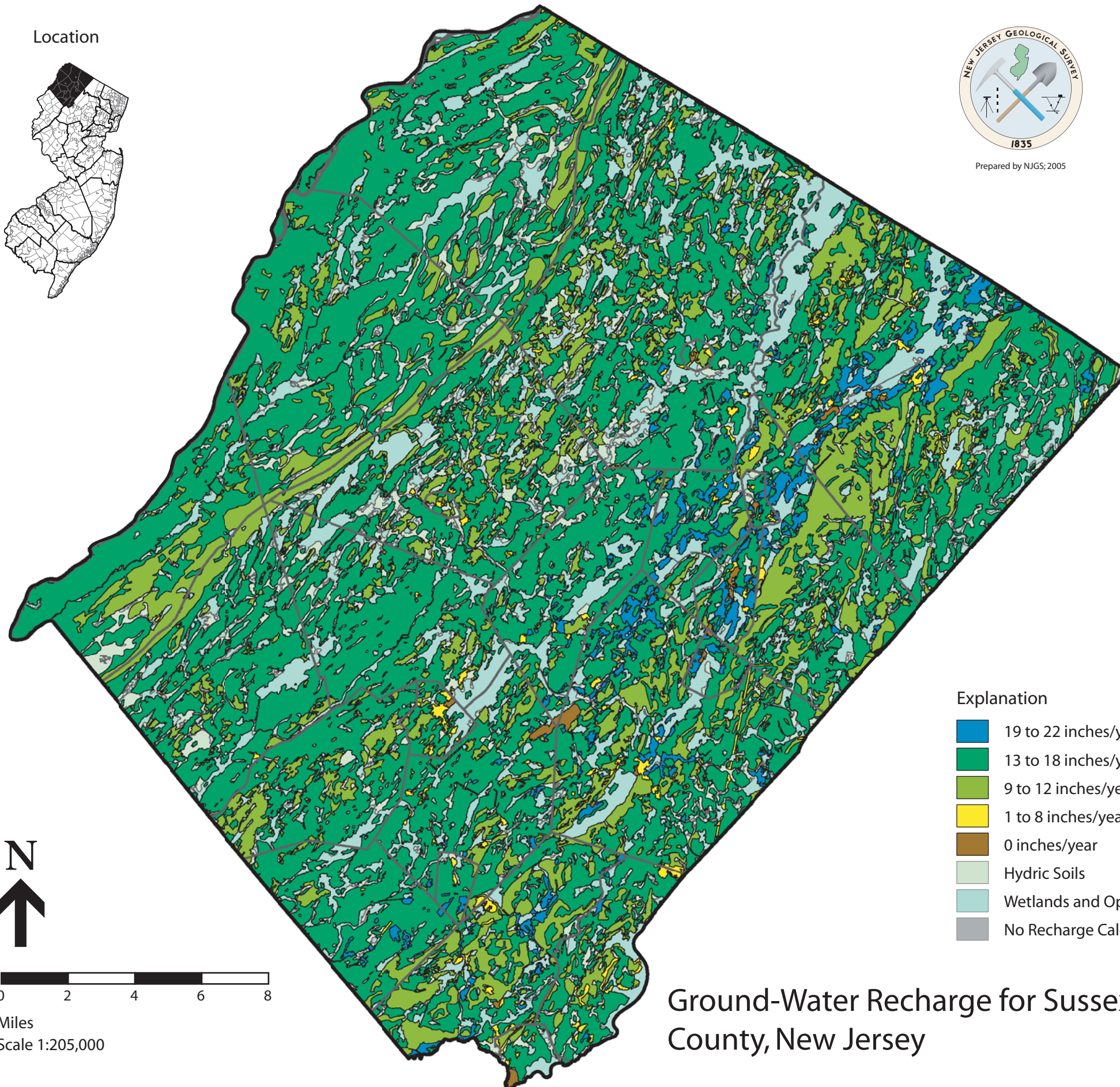


Location



Prepared by NJGS; 2005



Explanation

- 19 to 22 inches/year
- 13 to 18 inches/year
- 9 to 12 inches/year
- 1 to 8 inches/year
- 0 inches/year
- Hydric Soils
- Wetlands and Open Water
- No Recharge Calculated



Miles
Scale 1:205,000

Ground-Water Recharge for Sussex County, New Jersey