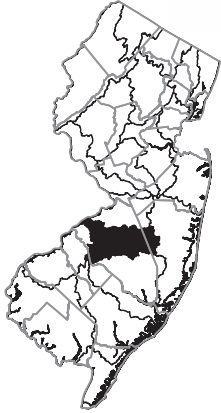
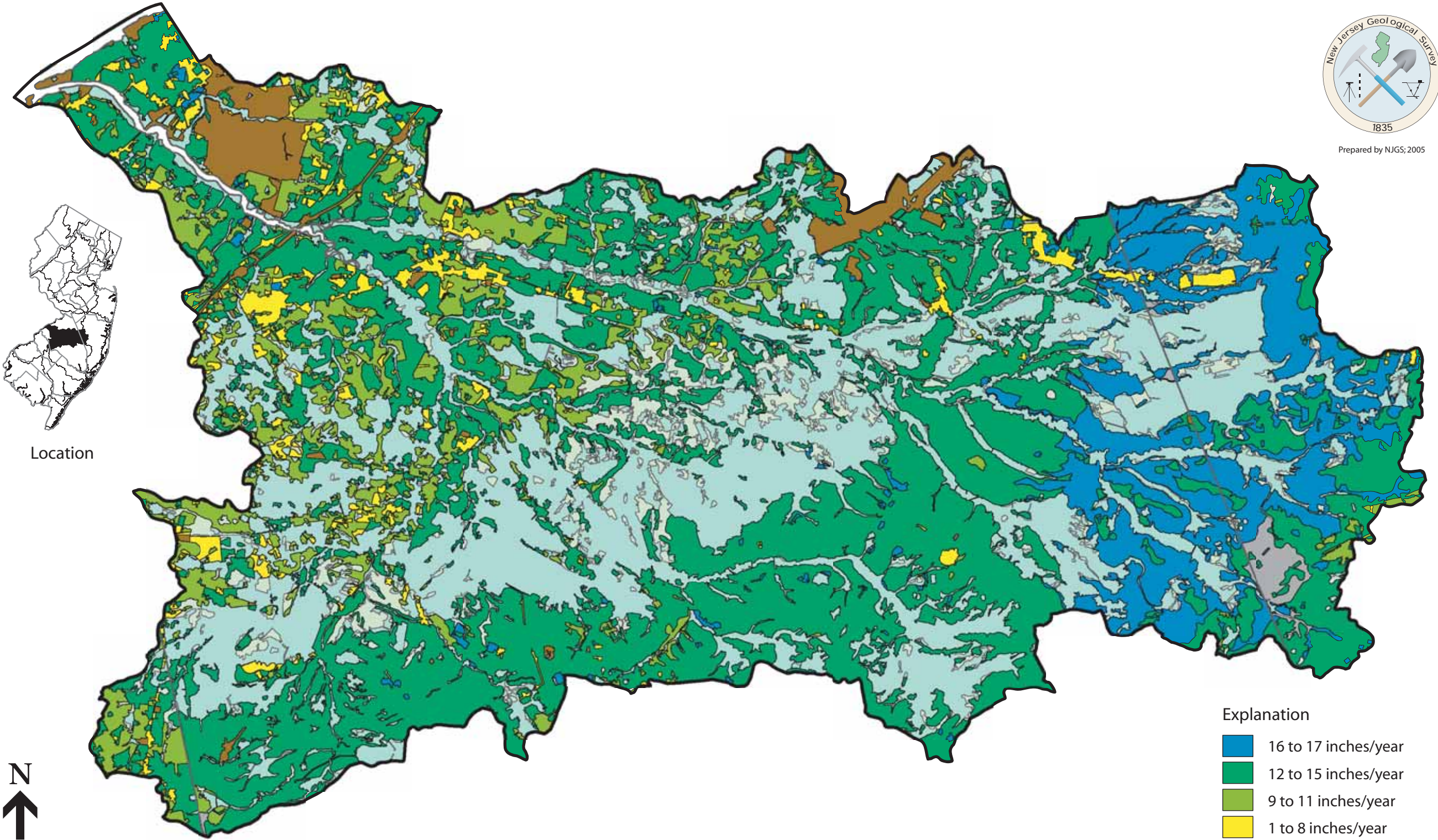


Prepared by NJGS, 2005



Location



Scale 1:155,000



Ground-Water Recharge for Watershed Management Area 19 (Rancocas Creek), New Jersey

- Explanation
- 16 to 17 inches/year
 - 12 to 15 inches/year
 - 9 to 11 inches/year
 - 1 to 8 inches/year
 - 0 inches/year
 - Hydic Soils
 - Wetlands and Open Water
 - No Recharge Calculated