

Figure 10. Hydrogeologic section G-G'

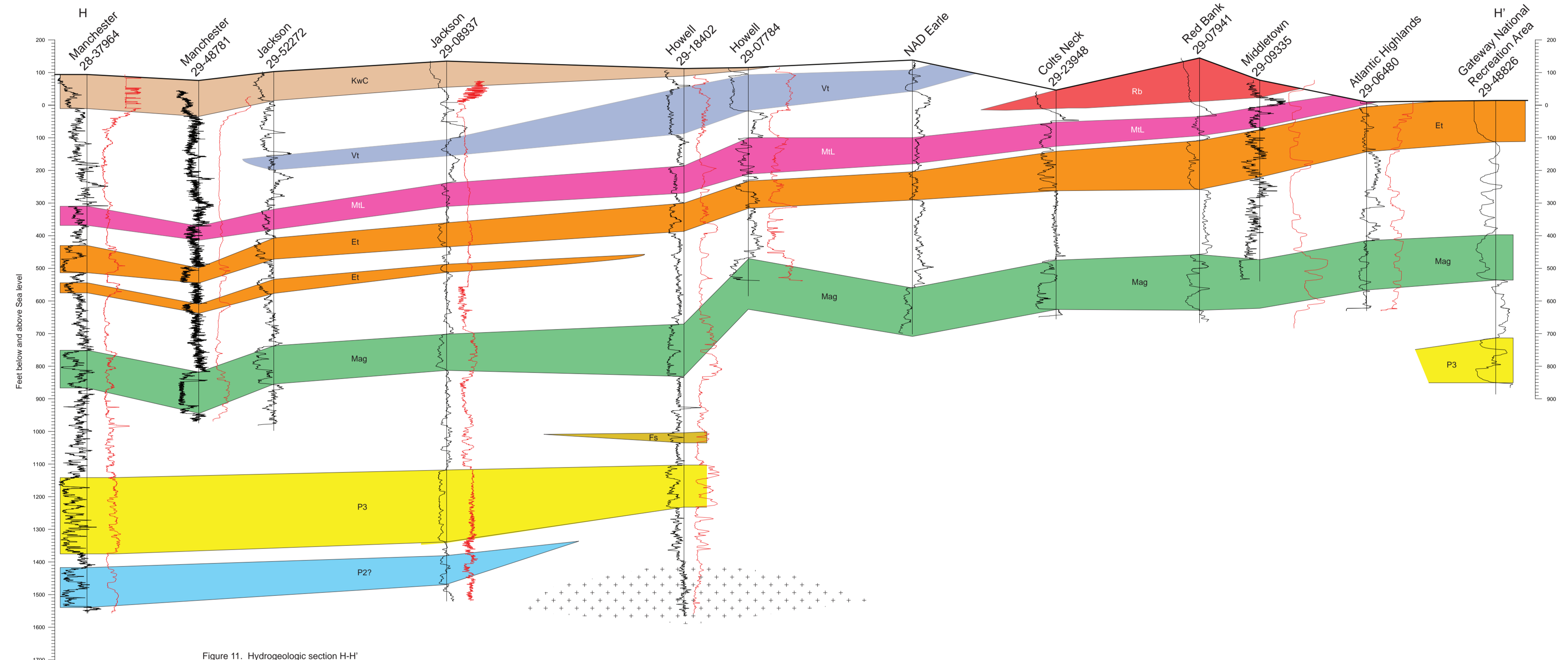


Figure 11. Hydrogeologic section H-H'

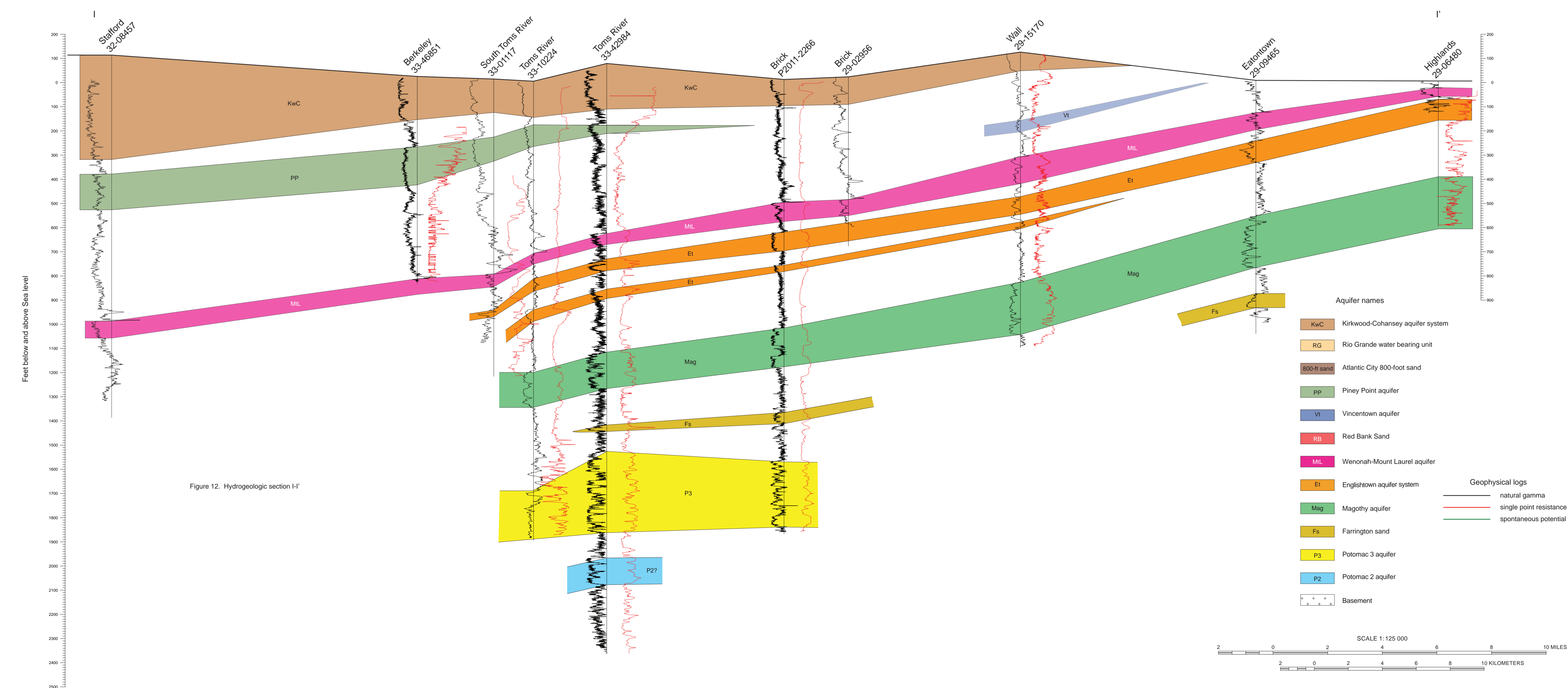


Figure 12. Hydrogeologic section I-I'

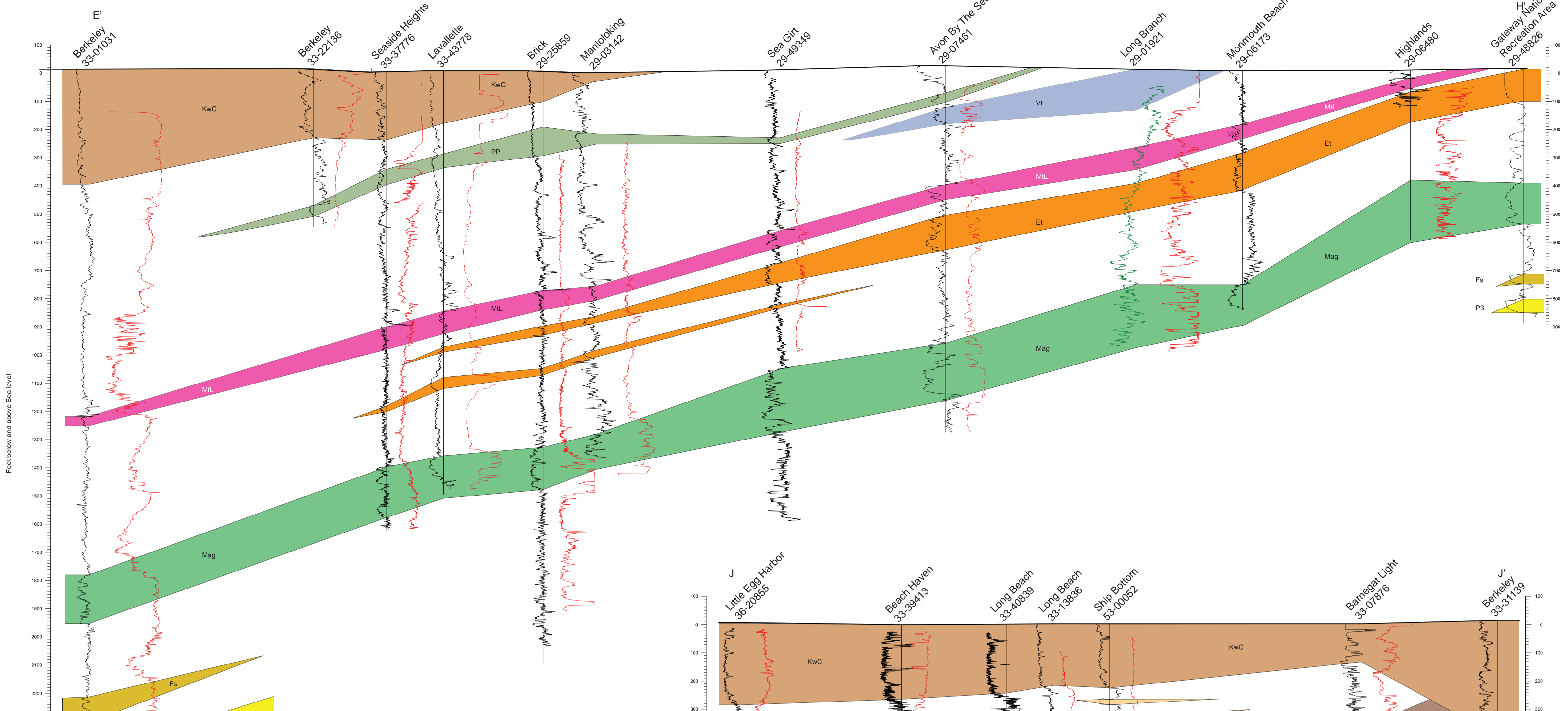


Figure 14. Hydrogeologic section E-E'

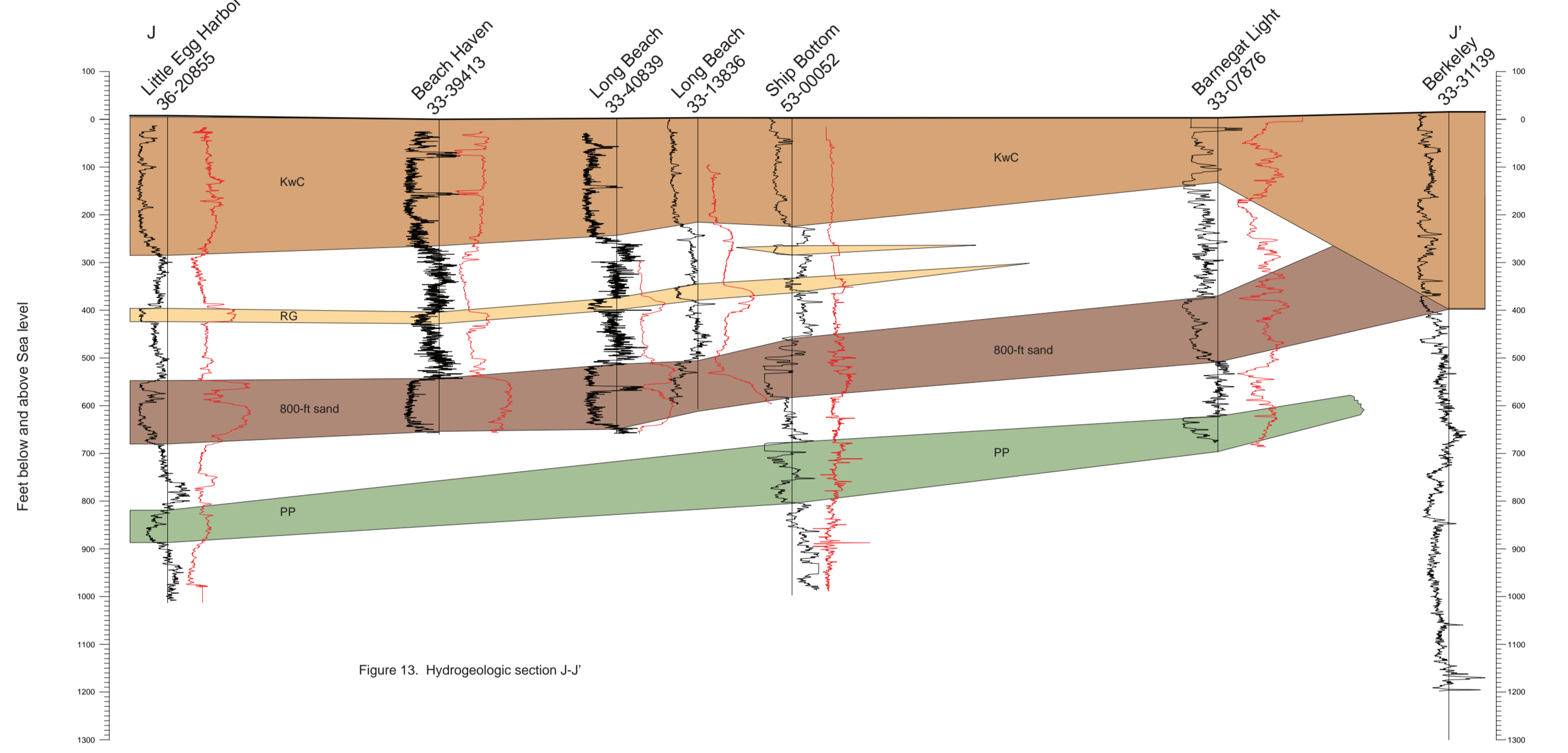


Figure 13. Hydrogeologic section J-J'

Table 2. Summary of aquifer tests on file at the New Jersey Geological and Water Survey. File Number identifies a particular aquifer test in the NJGSW paper files and in the Hydro database. Site Name identifies the test well and owner. Aquifer Designation is the name of the aquifer in which the test well is completed. Conditions "Unconfined", "Leaky", and "Confined" indicates the hydraulic behavior observed in the time-drawdown data; the modifier conveys the source of the leakage; either "Leaky/Unconfined" indicating leakage from the water table aquifer or "Leaky/Confined" indicating leakage from a confined aquifer. Aquifer Properties are values obtained from or used in the analysis of the time-drawdown data: T is transmissivity in ft²/day; K is hydraulic conductivity in ft/day; K_v is vertical hydraulic conductivity in ft/day; b is aquifer thickness in feet; S is storage (dimensionless); S_y is specific yield (dimensionless); l is leakage in day⁻¹.

File Number	Site Name	Aquifer Designation	Conditions	Aquifer Properties
1	United Water Toms River Berkeley Station Well 34	Kirkwood-Cohansey water-table aquifer system	Leaky/Unconfined	T=7000,S=0.0026,l=0.011
13	Ciba Geigy Well 754-1000	Atlantic City 800-foot sand aquifer	Unconfined	K=160,b=37,S=0.0009,S _y =0.043
14	Ciba Geigy Well 748-1000	Atlantic City 800-foot sand aquifer	Leaky/Unconfined	T=5900,S=0.0026,l=0.062
15	Ciba Geigy Well 748-1000	Atlantic City 800-foot sand aquifer	Unconfined	K=120,S _y =4.1,S=0.0048,S _y =0.19
17	Ocean Township MJA Well 6	Atlantic City 800-foot sand aquifer	Confined	T=6200,S=0.0026
20	Mirchalar Tap MJA Well 10	Pinney Point aquifer	Leaky/Confined	T=3700,S=0.0007,l=0.0045
31	United Water Toms River Well 40	Pinney Point aquifer	Confined	T=5100,S=0.0036
32	Freehold Township MJA Point by Well 3	Englishtown aquifer system	Confined	T=3300,S=0.0071
34	United Water Toms River Well 42	Magdaly aquifer	Unconfined	T=1100,S=0.0013
37	Naval Air Engineering Center RW-1	Kirkwood-Cohansey water-table aquifer system	Unconfined	K=87.2,b=100,S=0.0008,S _y =0.18
46	United Water Toms River Well 15	Pinney Point aquifer	Confined	T=780
53	Long Beach Top MJA Beach Haven Terrace Well 4	Atlantic City 800-foot sand aquifer	Leaky/Confined	T=3800,S=0.0037,l=0.771
56	Barnegat Township MJA Well 3	Englishtown aquifer system	Leaky/Confined	T=620,S=0.0026,l=0.011
61	NJ American Water Adelphi System Well 6	Mount Laurel-Wenonah aquifer	Leaky/Confined	T=730,S=0.0001,l=0.00098
67	Beacon Hill Well 1	Wenonah-Mount Laurel aquifer	Leaky/Confined	T=2200,S=0.0038
97	Jackson Township MJA Well 12 (ASR)	Magdaly aquifer	Leaky/Confined	T=1200,S=0.0018,l=0.0013
110	Freehold Township MJA Well 11	middle Potomac-Raritan-Magdaly aquifer	Confined	T=2200,S=0.0001
112	Barnegat Township MJA Well 7	Rio Grande water-bearing zone	Leaky/Confined	T=1100,S=0.0011,l=0.0002
114	Stafford Tap Water & Sewer Department Well 6	Atlantic City 800-foot sand aquifer	Leaky/Confined	T=3700,S=0.0014,l=0.0018
115	Lakewood Cogeneration Well 14	Kirkwood-Cohansey water-table aquifer system	Unconfined	K=150,b=73,S=0.0011,S _y =0.03,K _v =3.7
127	United Water Toms River Well 44	Kirkwood-Cohansey water-table aquifer system	Unconfined	K=100,b=45,S=0.0011,S _y =0.082,K _v =1.7
168	Lacey Township MJA Well 5	Atlantic City 800-foot sand aquifer	Leaky/Confined	T=2200,S=0.0022,l=0.011
169	Berkley Water Company Well 5	Kirkwood-Cohansey water-table aquifer system	Leaky/Unconfined	T=1100,S=0.00074,l=0.0014
179	Jumping Brook Golf Course Well IR-1	Vincenown aquifer	Confined	T=2300,S=0.0037
180	Seaside Heights Borough Well 7	Potomac-Raritan-Magdaly aquifer system	Confined	T=800,S=0.0042
182	Lacey Township MJA Test Well B Hill Street	Pinney Point aquifer	Confined	T=440,S=0.0021
187	United Water Toms River Well 45	Magdaly aquifer	Leaky/Confined	T=1700,S=0.0026,l=0.0007
188	Tuckerton Borough Well 3	Atlantic City 800-foot sand aquifer	Leaky/Confined	T=4500,S=0.0014,l=0.0009
195	Six Flags Great Adventure Well 14	Magdaly aquifer	Leaky/Confined	T=1500,S=0.00038,l=0.0006
200	Lakewood Borough Well 15	Magdaly aquifer	Leaky/Confined	T=1200,S=0.0018,l=0.0013
204	West Lake Village Irrigation Well IR-3	Kirkwood-Cohansey water-table aquifer system	Unconfined	K=100,b=55,S=0.0011,S _y =0.03,K _v =1.6
210	Sea Oaks Country Club Well 1	Kirkwood-Cohansey water-table aquifer system	Leaky/Confined	T=6000,S=0.0007,l=0.0053
221	K Hoveman at Little Egg Harbor Well 10	Atlantic City 800-foot sand aquifer	Confined	T=5700,S=0.0065
231	Sea Raritan Clean Aqueduct Well IR-1	Englishtown aquifer system	Leaky/Confined	T=1000,S=0.0008,l=0.00030
235	Four Seasons at Wall Well TW-1	Pinney Point aquifer	Leaky/Confined	T=4500,S=0.0022,l=0.0002
239	Greenhills at Waretown Well 3	Atlantic City 800-foot sand aquifer	Leaky/Confined	T=9500,S=0.0034,l=0.0008
240	Stafford Tap Water & Sewer Department Well 7	Atlantic City 800-foot sand aquifer	Leaky/Confined	T=2800,S=0.0021,l=0.0017
243	Deal County Club Well IR-1	Vincenown aquifer	Leaky/Confined	T=1800,S=0.0072,l=0.00022
246	Long Beach Township Palata Park Well 1	Atlantic City 800-foot sand aquifer	Confined	T=1700,S=0.00039
256	Greenwood Village Water Co Well 3	Kirkwood-Cohansey water-table aquifer system	Unconfined	K=70,b=100,S=0.00038,l=0.004,K _v =0.082
262	Eagle Ridge Golf Course Well 1A	Kirkwood-Cohansey water-table aquifer system	Unconfined	K=130,b=115,S=0.0029,S _y =0.04,K _v =7.7
266	Berkley Township MJA Well 2	Pinney Point aquifer	Confined	T=1700,S=0.0023
267	Shore Golf Enterprises Inc Well IR-1	Vincenown aquifer	Unconfined	K=210,b=100,S=0.0051,S _y =0.04,K _v =0.77
273	Jackson Township MJA Well 13	middle Potomac-Raritan-Magdaly aquifer	Confined	T=1800,S=0.00026
281	Beachwood Borough Well 7	Pinney Point aquifer	Confined	T=4800
282	Lighthouse Associates Well 5	Atlantic City 800-foot sand aquifer	Leaky/Confined	T=1700,S=0.0014,l=0.0006
287	Jackson Township MJA Well 15	middle Potomac-Raritan-Magdaly aquifer	Confined	T=2400
292	Freehold Township MJA Well 9	Magdaly aquifer	Confined	T=8500
294	Lacey Township MJA Box Street Well 1	Atlantic City 800-foot sand aquifer	Leaky/Confined	T=2200,S=0.0025,l=0.0043
295	Lacey Township MJA Well 2	Atlantic City 800-foot sand aquifer	Leaky/Confined	T=8400,S=0.0059,l=0.0035
298	Creswood Village Water Co Well 11	Magdaly aquifer	Leaky/Confined	T=4000,S=0.0023,l=0.0009
299	NJ American Water Swimming River Well T (ASR)	Magdaly aquifer	Leaky/Confined	T=4400,S=0.0018,l=0.0004
302	Watson Homes Inc Well B	Atlantic City 800-foot sand aquifer	Leaky/Confined	T=11000,S=0.0065,l=0.001
303	Barnegat Township MJA Well 6	Atlantic City 800-foot sand aquifer	Leaky/Confined	T=10000,S=0.0045,l=0.0034
307	Menards National Golf Club Well 1	Magdaly aquifer	Confined	T=3600
310	United Water Toms River Well 21	Cohansey aquifer	Leaky/Unconfined	T=16000,S=0.0022,l=0.085
315	Frog Pond Estates Test Well 1	Atlantic City 800-foot sand aquifer	Confined	T=1100,S=0.0016
319	Frog Pond Estates Well 2	Atlantic City 800-foot sand aquifer	Leaky/Unconfined	T=7400
317	Stafford Tap Water & Sewer Department Well 8	Atlantic City 800-foot sand aquifer	Confined	T=14000
322	Stafford Tap Water & Sewer Department Well 11	Atlantic City 800-foot sand aquifer	Confined	T=11000
323	Stafford Tap Water & Sewer Department Well 12	Atlantic City 800-foot sand aquifer	Confined	T=9800
324	Englishtown Borough Well 3	lower Potomac-Raritan-Magdaly aquifer	Confined	T=14000
325	Atlantic Highlands Borough Well 6	Englishtown aquifer system	Leaky/Confined	T=3800,S=0.0022,l=0.0002
329	Stafford Tap Water & Sewer Department Well 5	Atlantic City 800-foot sand aquifer	Confined	T=4000
342	Lacey Township MJA Test Well 8	Magdaly aquifer	Leaky/Confined	T=3800,S=0.0023,l=0.0001
343	Lacey Township MJA Test Well 7	Magdaly aquifer	Confined	T=2700
345	Rio Beach Borough Well 2	Kirkwood-Cohansey water-table aquifer system	Leaky/Unconfined	T=8800,S=0.00085,l=0.0038
351	NJ American Water New Egbert System Well 1A	Englishtown aquifer system	Leaky/Confined	T=5800,S=0.0002,l=0.0002
357	Shorelands Water Co Inc Well 7	Magdaly aquifer	Leaky/Confined	T=2100