

Figure 2. Fresh water annual withdrawals in Cape May County by source group, 1990 through 2011.



Figure 3. Fresh water annual withdrawals in Cape May County by user group, 1990 through 2011.

Table 1. Permit number, well location, total depth, and cross section of wells used in this study.

NJ Well Permit Number	County	Municipality	Quadrangle Name	USGS Latitude (ddmm) (ddmm)	USGS Longitude (ddmm) (ddmm)	Total Depth (ft)	Section
35-04660	Cumberland	Maurice River Twp	Pop E/2646h, NJ	391518	743535	600	D-C, F-F
35-04661	Cumberland	Equal River City	Woodbine, NJ	391556	743756	600	D-C, F-F
35-05039	Cape May	Madison Twp	Rio Grande, NJ	390422	742447	783	F-F
35-12881	Cape May	Dennis Twp	Woodbine, NJ	391460	743550	335	D-C
35-12745	Cape May	Dennis Twp	Woodbine, NJ	391118	743027	300	F-F
35-25238	Cape May	Madison Twp	Stone Harbor, NJ	390656	743551	715	B-F, E-E
35-25747	Cape May	Madison Twp	Rio Grande, NJ	390637	742529	755	B-F, F-F
35-25839	Cape May	Lower Twp	Woodbine, NJ	391460	743550	335	D-C
35-05846	Cape May	Avonlea Boro	Avonlea, NJ	390629	744253	480	G-G
35-10319	Cape May	Sea View City	Sea View City, NJ	391150	743528	870	G-G
35-13154	Cape May	Lower Twp	Woodbine, NJ	391225	744651	283	D-C
35-16002	Cape May	Dennis Twp	Woodbine, NJ	391225	744651	283	D-C
35-22304	Cape May	Dennis Twp	Sea View City, NJ	391043	744331	1575	D-C, E-E
35-25902	Cape May	Sea View City	Sea View City, NJ	390948	744138	820	D-C, D-C
35-30023	Cape May	Lower Twp	Marmora, NJ	391717	743805	750	E-E
35-11564	Cape May	Lower Twp	Marmora, NJ	391700	743731	743	D-F, E-E
37-00014	Cape May	Madison Twp	Stone Harbor, NJ	390401	743750	600	B-F
37-00023	Cape May	Lower Twp	Cape May, NJ	390727	744647	460	F-E
37-00033	Cape May	Madison Twp	Stone Harbor, NJ	390219	743711	940	G-G
37-00036	Cape May	Madison Twp	Stone Harbor, NJ	390203	743651	870	B-F, E-E
37-00049	Cape May	Madison Twp	Stone Harbor, NJ	390638	742002	250	B-F
37-00050	Cape May	Madison Twp	Stone Harbor, NJ	390638	742002	250	B-F
37-00012	Cape May	Stone Harbor Boro	Stone Harbor, NJ	390250	744005	970	B-F, G-G
37-00018	Cape May	Whispering Pine Boro	Whispering Pine, NJ	390443	744005	920	D-C
37-01340	Cape May	Lower Twp	Marmora, NJ	391631	744335	740	D-F
37-03035	Cape May	Madison Twp	Stone Harbor, NJ	390337	744623	380	B-F
37-03036	Cape May	Madison Twp	Stone Harbor, NJ	390337	744623	380	B-F
37-04669	Cape May	North, Wildwood City	Stone Harbor, NJ	390012	744720	1000	G-G
37-05019	Cape May	Madison Twp	Stone Harbor, NJ	390562	743530	1020	D-C
37-05559	Cape May	Lower Twp	Rio Grande, NJ	390203	746607	599	A-A, F-F
37-06014	Cape May	Lower Twp	Rio Grande, NJ	390203	746607	599	A-A, F-F
37-06564	Cape May	Cape May City	Cape May, NJ	390713	743727	775	F-F
37-07050	Cape May	Madison Twp	Stone Harbor, NJ	390483	743530	870	A-A
37-07093	Cape May	Madison Twp	Rio Grande, NJ	390166	743311	685	A-A
37-07094	Cape May	Madison Twp	Rio Grande, NJ	390166	743311	685	A-A, E-E
37-00047	Cape May	Cape May Point Boro	Cape May, NJ	390547	742738	602	E-E, G-G
37-00048	Cape May	Lower Twp	Rio Grande, NJ	390203	746607	599	A-A, D-C
37-00049	Cape May	Wildwood City	Wildwood, NJ	390940	743800	1244	A-A
37-00043	Cape May	Lower Twp	Rio Grande, NJ	390203	746607	599	A-A
37-00044	Cape May	Madison Twp	Rio Grande, NJ	390215	745440	225	A-A
37-00048	Cape May	Madison Twp	Rio Grande, NJ	390203	746607	200	F-F
E20115463	Cape May	Lower Twp	Rio Grande, NJ	390203	746607	200	F-F
E20130087	Cape May	Lower Twp	Cape May, NJ	390747	745722	270	F-F, A-A
E20130089	Cape May	Lower Twp	Rio Grande, NJ	390203	746607	240	F-F
E20130137	Cape May	Lower Twp	Rio Grande, NJ	390203	746607	260	F-F
E20141002	Cape May	Madison Twp	Rio Grande, NJ	390207	746534	200	A-A

Table 2. Summary of aquifer tests in Cape May County on file at the New Jersey Geological and Water Survey. File numbers denote a particular aquifer test in the NJGWIS paper file and in the hydro database. Aquifer designation is the name of the aquifer in which the test well is completed. Aquifer properties are values obtained from or used in the analysis of the time-drawdown data. T is transmissivity in ft/day; S is storativity (dimensionless); L is leakage in day⁻¹.

File Number	Well Permit No.	Aquifer	Aquifer Properties
12	36-12480	Cohansey	T=12,771 ft/day, S=0.68e-4, L=1.12e-3
109	36-31056	Atlantic City 800-foot sand	S=0.04e-4 based on the value of 0.11
105	35-12231	Holly Beach water bearing zone	T=10,249 ft/day, S=3.35e-4, L=6.6e-5
129	37-08182	Cohansey	T=3,298 ft/day, S=0.24e-4, L=0.82e-4
141	37-06314	Atlantic City 800-foot sand	T=2,276 ft/day, S=0.85e-4, L=1.07e-5/day
231	36-27606	Atlantic City 800-foot sand	T=1,410-1,752 ft/day
338	36-31066	Atlantic City 800-foot sand	T=7,806 ft/day, S=0.77e-4, L=3.8e-5
337	36-31443	Atlantic City 800-foot sand	T=7,988 ft/day
341	P20110104	Cohansey	T=4,752 ft/day, S=3.36e-4, L=1.47e-4/day
346	37-05846	Atlantic City 800-foot sand	T=7,437 ft/day, S=0.61e-4
367	37-05240	Atlantic City 800-foot sand	T=6,574 ft/day, S=0.33e-4, L=4.46e-6/day
379	37-06483	Cohansey	T=3,121.6 ft/day, S=1.271e-4, L=3.95e-6/day

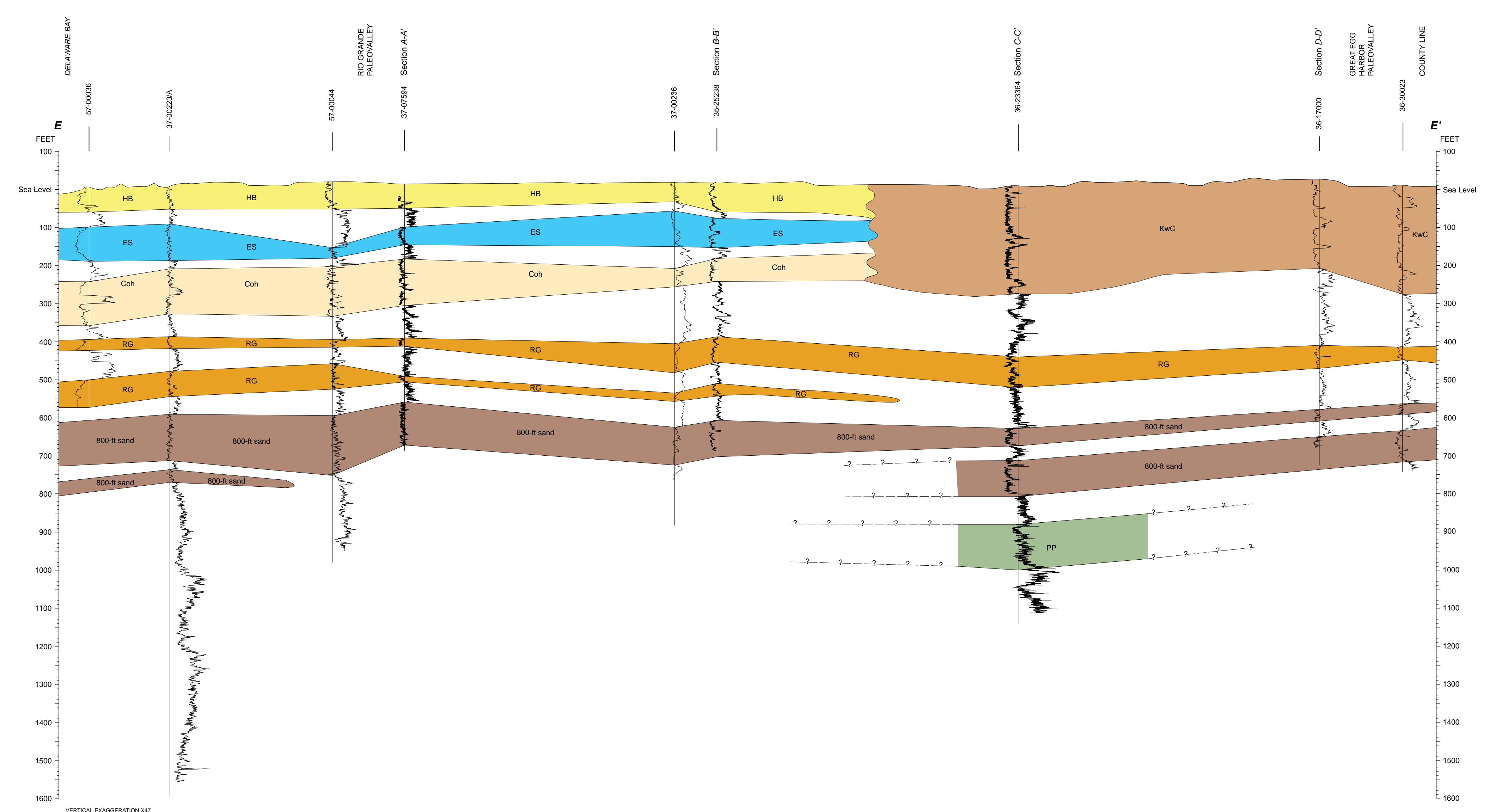
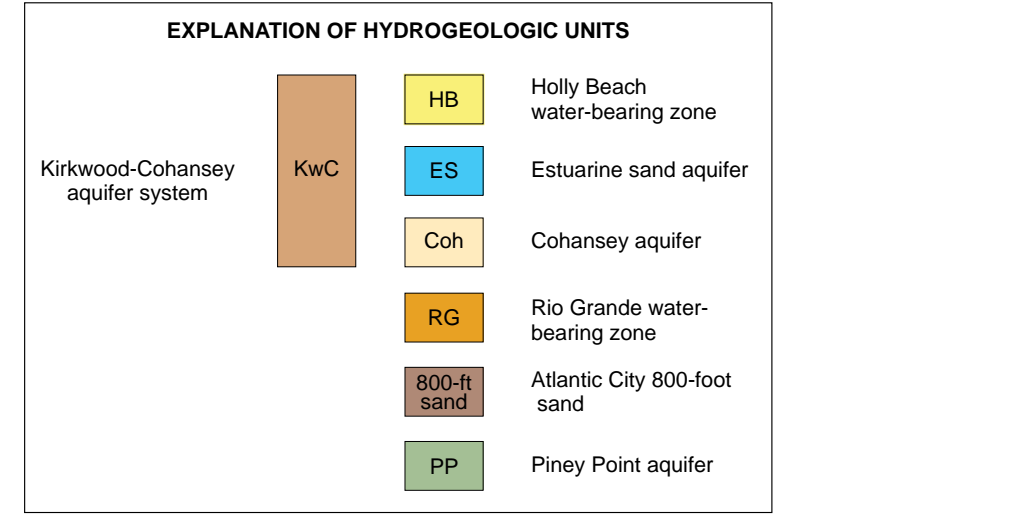


Figure 14. Hydrogeologic section E-E'

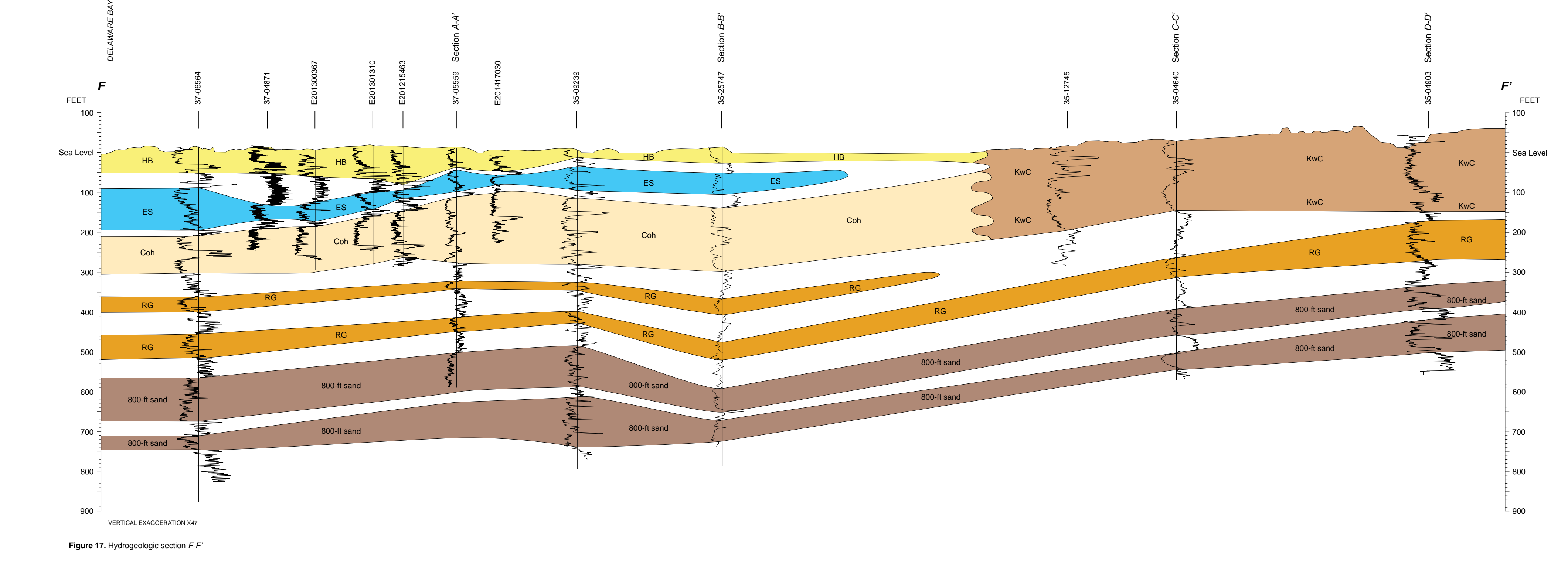


Figure 17. Hydrogeologic section F-F'

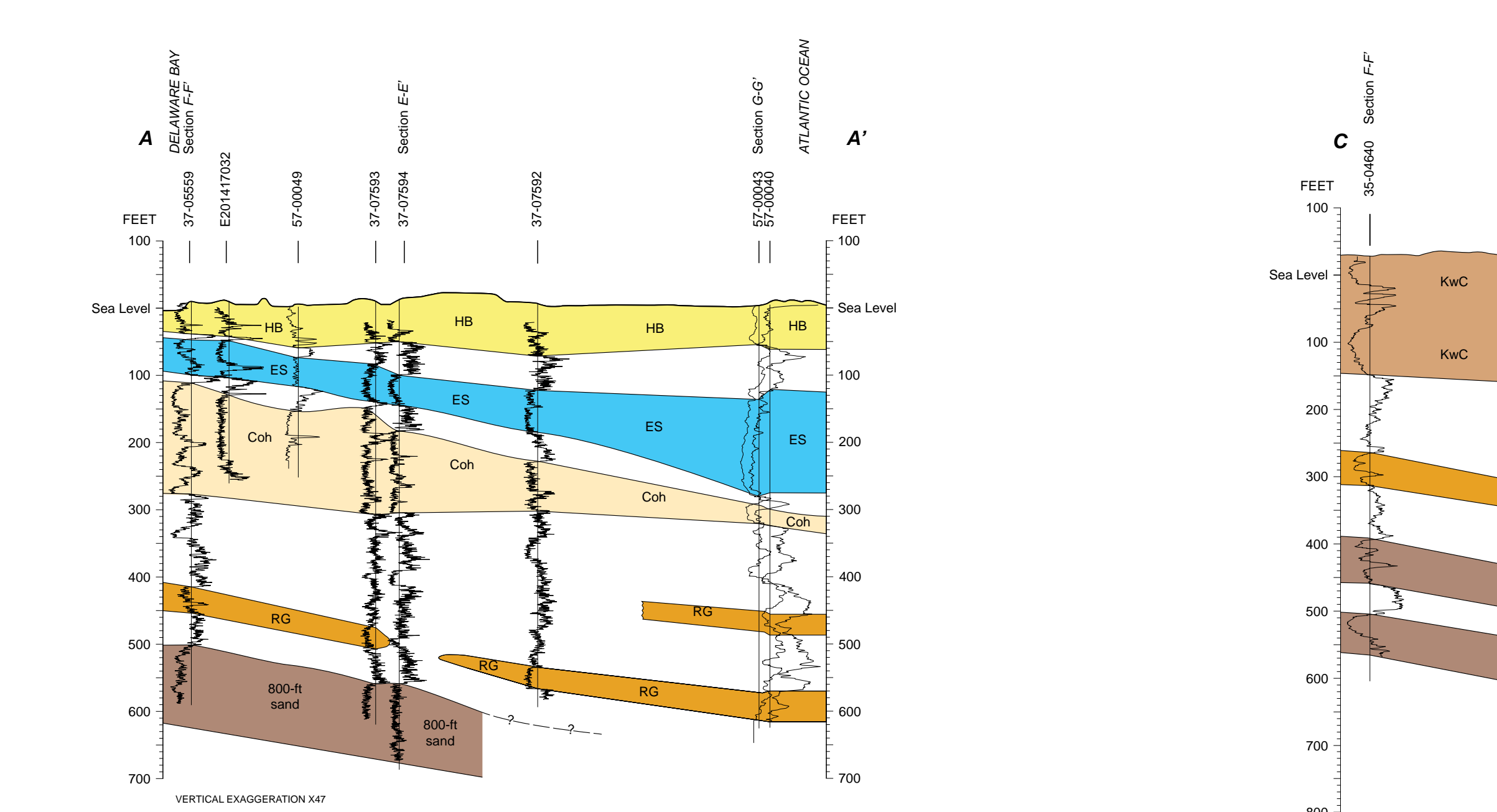


Figure 12. Hydrogeologic section A-A'

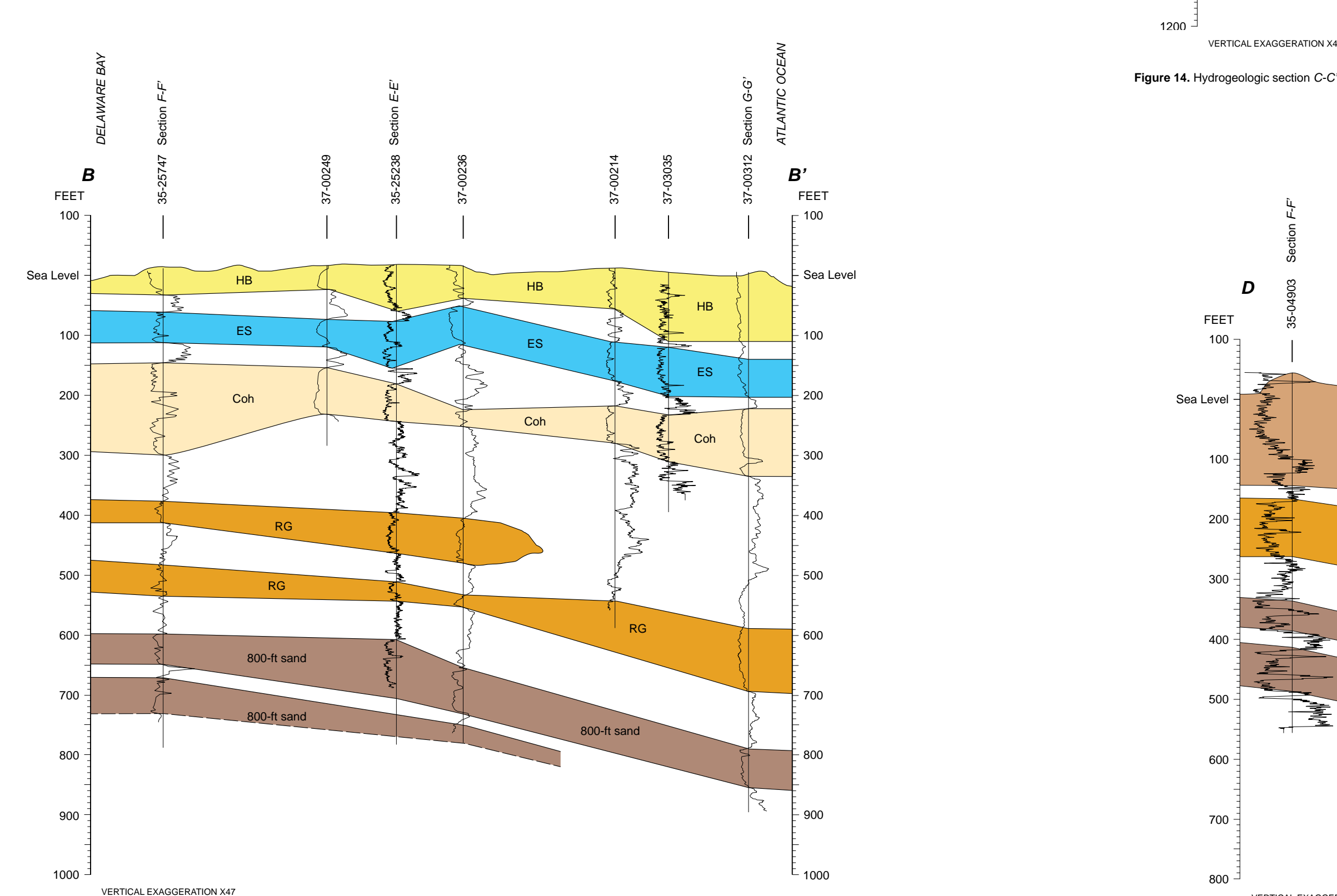


Figure 13. Hydrogeologic section B-B'

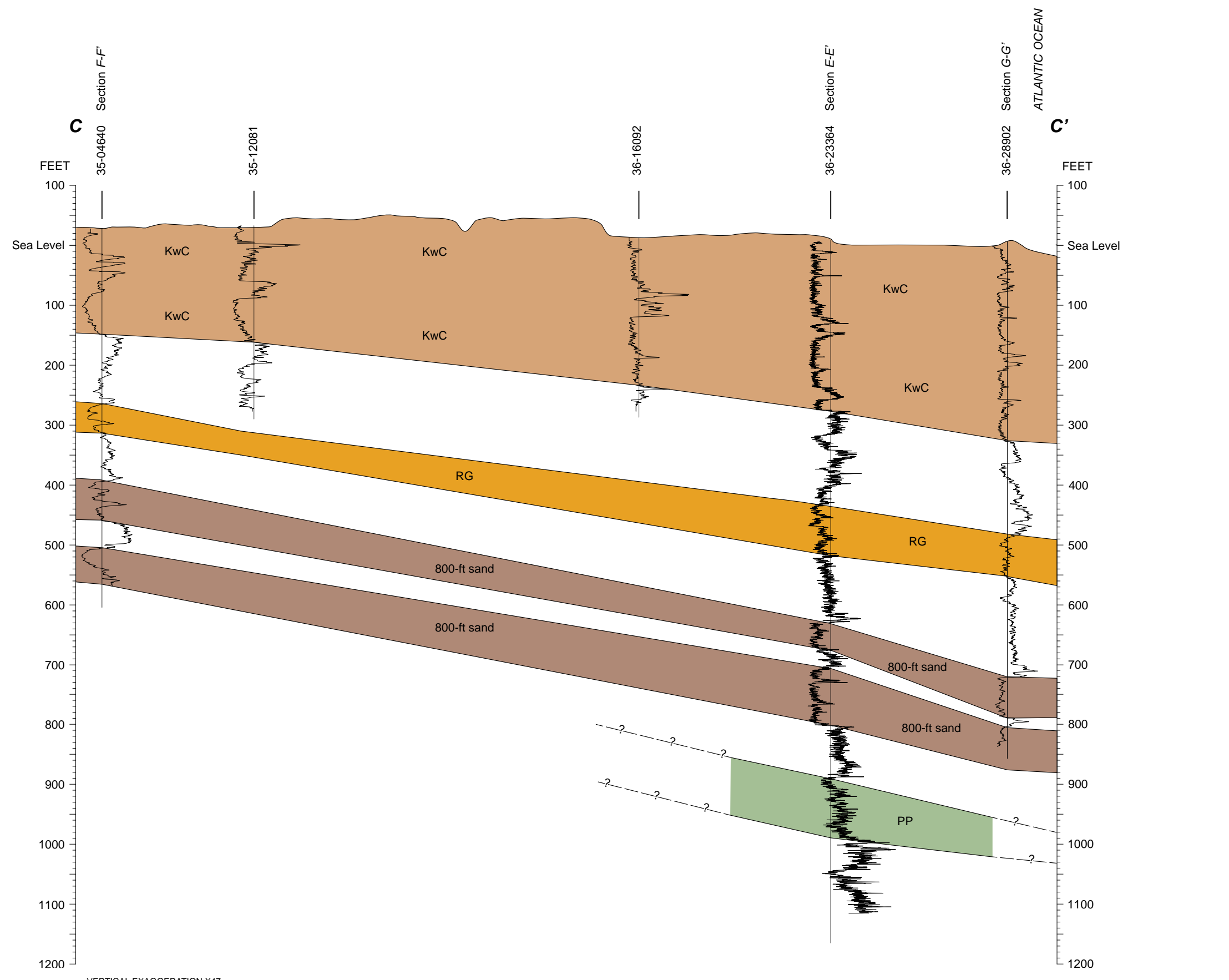


Figure 14. Hydrogeologic section C-C'

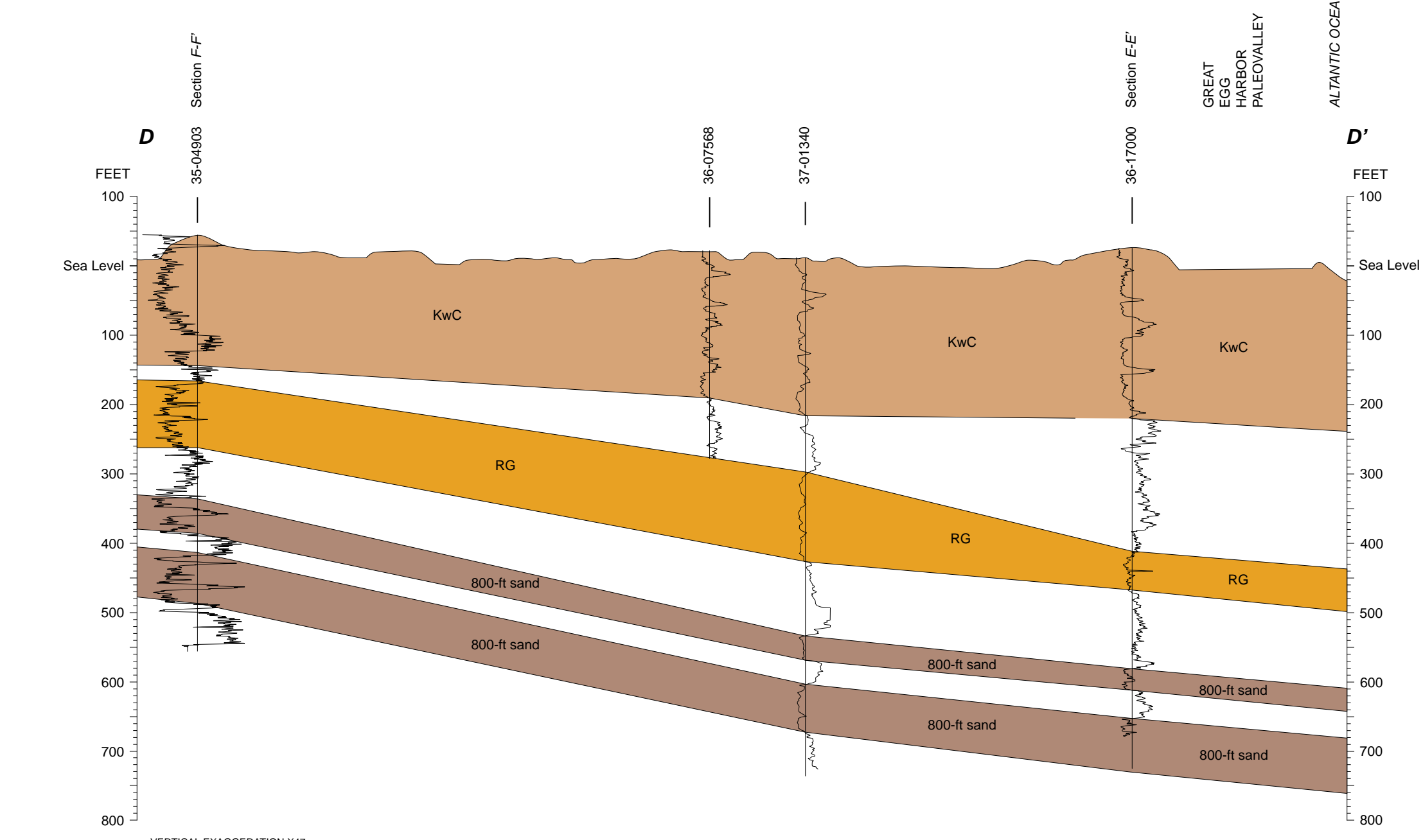


Figure 15. Hydrogeologic section D-D'

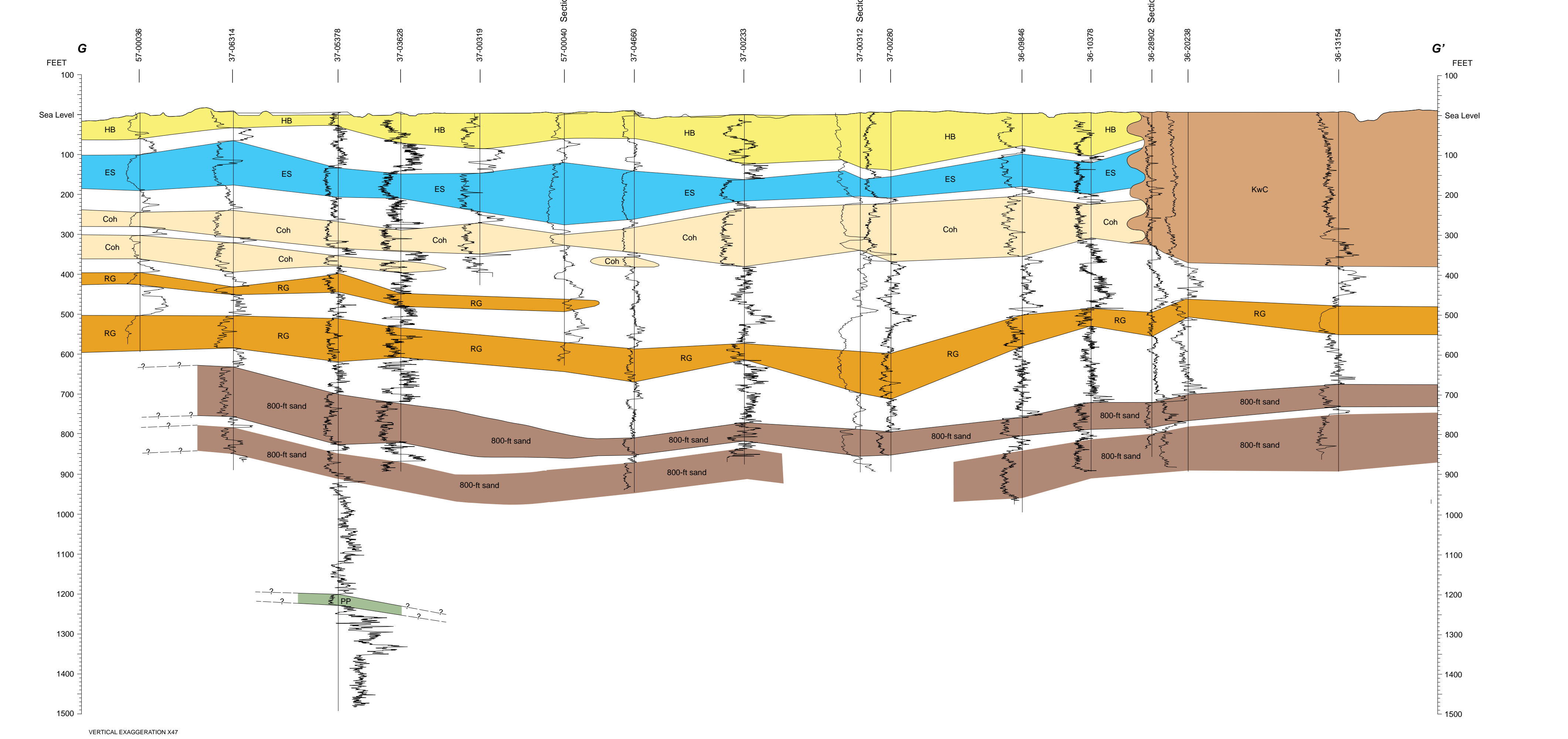


Figure 18. Hydrogeologic section A-A'

Geologic and Aquifer Map of Cape May County, New Jersey

by
Peter J. Sugarman, Donald H. Monteverde, Scott D. Stanford,
Stephen W. Johnson, Yelena Stroiteleva, Ronald S. Pristas,
Kathleen Vandegrift, and Steven E. Domber

