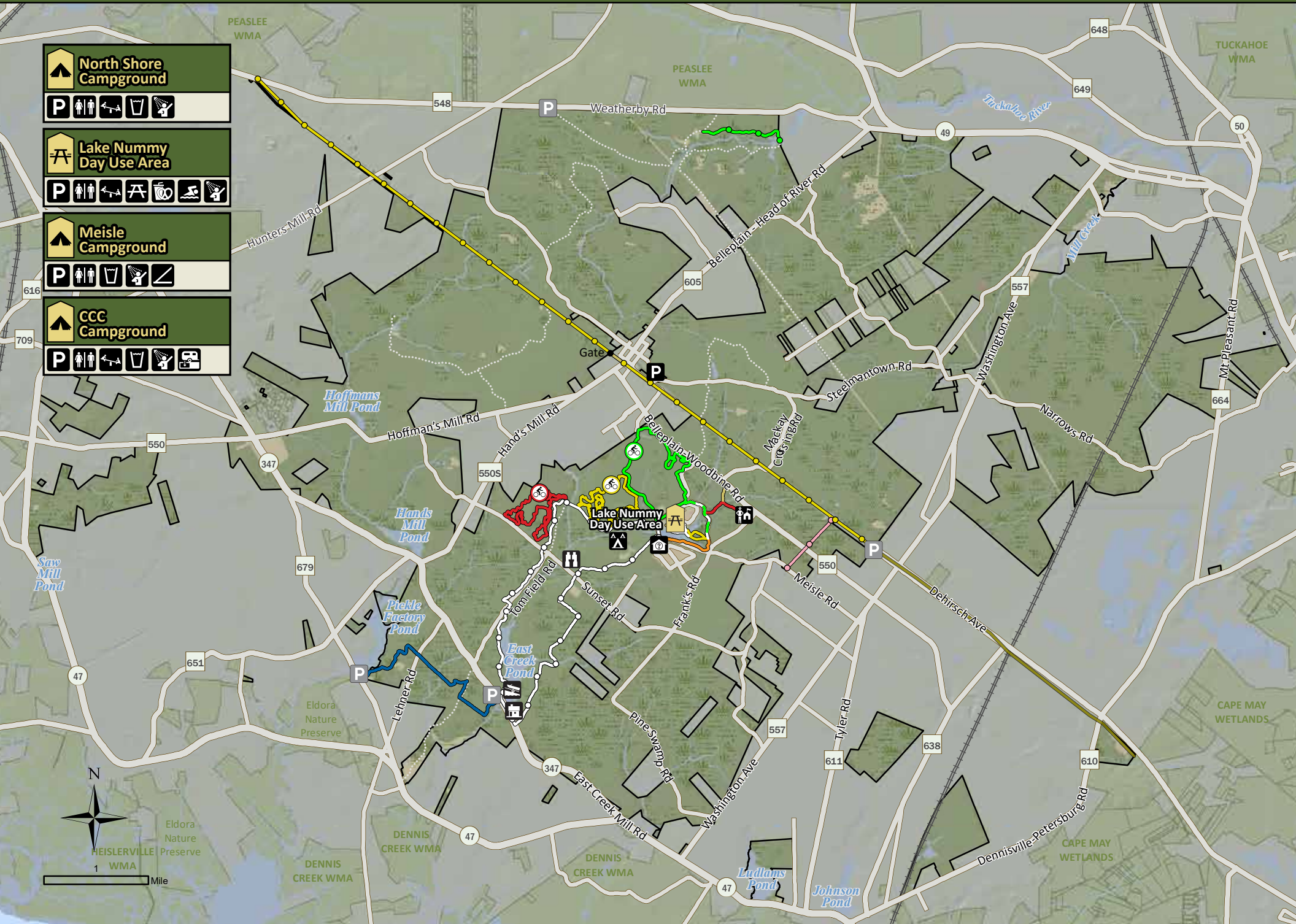


BELLEPLAIN State Forest



Lake Nummy Detail



- Open Field or Grass
- Forest
- Developed Area
- Water
- Wetland

- Improved Road
- Unimproved Road

- Boundary Trail (0.7 mi)
- East Creek Trail (7 mi)
- Goosekill Trail (0.5 mi)
- Green Loop Trail (3.2 mi)
- Meisle Trail (0.6 mi)
- Mountain Bike Trail (3.7 mi)
- Nature Trail 1 (0.5 mi)

- Nature Trail 2 (0.5 mi)
- North Shore Trail (0.5 mi)
- Ponds Trail (2.2 mi)
- Red Loop Trail (3.2 mi)
- Seashore Line Trail (5.8mi)
- Tarkiln Bogs Trail (0.9 mi)
- Trail Connector

- Birding
- Boat Launch
- Cabin
- Campground
- Concession
- Drinking Water
- Interpretive Center
- Group Campground
- Lean-to
- Park Office
- Parking Lot
- Parking (Pull Off)
- Picnic Area
- Playground
- Restrooms
- Shower
- Swimming
- Trailer Sanitary Station
- Visitor Contact Station

INTRODUCTION

Belleplain State Forest encompasses portions of Cape May and Cumberland Counties in the Pinelands National Reserve in southern New Jersey. This 23,000-acre forest contains a great variety of habitats, including saltwater marsh, Atlantic white cedar swamp, mixed hardwood swamp and oak-hickory forest.

HISTORY

Belleplain State Forest was established in 1928 for recreation, wildlife management, timber production and water conservation.

In 1933, three Civilian Conservation Corps (CCC) camps were set up in the area as a result of the Civilian Conservation Corps Reforestation Relief Act. The men of camp S-63 were housed in buildings within Belleplain State Forest. They supplied labor to the forest for over an eight-year period. During their time here they converted Meisle Cranberry Bog into Lake Nummy, a popular swimming, boating and fishing area.

The CCC also constructed the original forest headquarters (now the interpretive center), maintenance buildings, a road system, bridges and dams.

FEATURES AND ACTIVITIES

There are more than twenty miles of trails in Belleplain State Forest for hiking, biking and horseback riding. Other activities include swimming at Lake Nummy, hunting, fishing, camping and stargazing. Belleplain is a well-known birding spot, especially during the spring migration.

NJ Forest Service Management - This state forest contains stands of pine, oak and Atlantic white cedar trees, reflecting differing soil conditions and intensity of wildfire than found in the New Jersey Pine Barrens. Various demonstrations of reforestation and silviculture are conducted in such forest stands to improve and adapt to the forest’s needs.

Swimming
Swimming is permitted, while lifeguards are on duty, from Memorial Day weekend to Labor Day. The beach area in the Lake Nummy Day Use Area includes parking, changing rooms, restrooms, showers, a first-aid station, playgrounds and a concession building where food and beach supplies may be purchased. Inner tubes, rafts and other flotation devices are not permitted in the swimming area. Only U.S. Coast Guard approved personal flotation devices (PFDs) are permitted. Pets are not permitted on the beach.

Boating
Small boats or canoes may be launched near a floating dock on Lake Nummy and from a boat launch ramp at East Creek Pond. Powered boats are limited to electric motors only. Canoes may be rented at Lake Nummy during the summer months. NJ State Law requires children 12 and under to always wear a U.S. Coast Guard approved PFD. Everyone must wear a PFD from November 1 to May 1 when on a canoe or kayak under 26 feet in length. Please put on your properly fitted PFD before getting into your boat.



Picnicking
Family picnic facilities are located in a shaded area near the beach. Charcoal grills, tables and restroom facilities are available. An athletic field is nearby and is ideal for softball games, kite flying and various field sports.

Two reservable group picnic pavilions offer secluded settings and parking. Groups of 20 or more need to reserve picnic facilities at least five days in advance. Group reservations are not permitted on holidays except as authorized by the superintendent. For more information and to make a reservation contact the forest office.

Special Events
Numerous special events, such as weddings, enduros, astronomy viewing, triathlons, volunteer projects, etc., may be scheduled throughout the year. Groups seeking to conduct special events and gatherings must contact the forest office for permission and any required special use permits.



Camping
Within walking distance of Lake Nummy are three camping areas: CCC, Meisle and North Shore with a total of 169 family campsites. Each site offers a picnic table and fire ring. Most sites will accommodate a travel or camp trailer. Flush toilets and hot showers are provided in each camping area. North Shore Campground has ADA accessible restrooms with showers. There is a combination lock to access the facilities. The CCC camping area has a sanitary dump station and water and electric hookups for trailers.

Meisle and CCC camping areas are open year-round. Fourteen fully enclosed lean-tos and five shelters are located in the Meisle camping area. Each lean-to consists of one unfurnished room, which can accommodate up to six people and the sites offer an outdoor picnic table, fire ring and charcoal grill. November-March heat is provided by indoor propane heaters.

Shelters contain 2 double bunk beds, a table with bench seating and a wood stove. An outdoor picnic table, fire ring and charcoal grill are provided. Firewood can be purchased at the forest office. All lean-tos and shelters are ADA accessible and available year-round.

The East Creek Group Cabin is located on East Creek Pond. The cabin contains a furnished living room with fireplace, full kitchen, two bunkrooms with double bunks, bathrooms, showers and outdoor campfire rings. This cabin accommodates up to 30 people. There is a picnic grove, boat dock and ball field. Cabin is open year-round.

Reservations can be made up to 11 months in advance by visiting, www.camping.nj.gov or in person at the forest office.



Trails
The 7 mile “East Creek Trail” connects Lake Nummy to East Creek Pond. In addition, the forest has more than 20 miles of marked, designated trails for hiking, biking, horseback riding and snowmobiling/cross-country skiing when conditions permit. Many of these trails are bisected by gravel and hard surface roads.

Two self-guided interpretive trails, totaling almost a mile, take visitors through a cross-section of the forest. Nature Trail 1, marked in white, forms a loop and is connected to Nature Trail 2, which is marked in yellow. A trails brochure is available at the forest office.

Travel over forest roads by licensed and insured motor vehicles is permitted. Certain portions of the network are closed to all motor vehicles and are routinely patrolled by Park Police.



Hunting, Fishing & Trapping
These recreational activities are permitted in the forest, subject to NJDEP Fish & Wildlife regulations dep.nj.gov/njfw/. Hunting is not permitted in New Jersey state parks and forests on Sundays.

Fishing is permitted in Lake Nummy, East Creek Pond, Holly Lake and Cedar Lake. Typical freshwater species include pickerel, perch, catfish, largemouth bass and sunfish. A current NJ Fishing License must be in the angler’s possession and displayed.



Access For People With Disabilities
Belleplain State Forest recreational facilities are partially accessible to persons with disabilities. Please contact the forest office for further information regarding disability access needs. Text telephone (TTY) users, call the NJ Relay & CapTel Service at 711 or 1-800-852-7897 for English or 1-866-658-7714 for Spanish.



Be Bear Aware
Black bears are found throughout New Jersey. Do not approach or attract bears by making food available. Feeding bears is dangerous and illegal. Never run from a bear! To report an aggressive bear, call 1-877-WARNDEP (1-877-927-6337) immediately. Please report any damage or nuisance behavior to the forest office. Visit NJDEP Fish & Wildlife dep.nj.gov/njfw/bears for additional information on bear safety.



Pets
Pets must always be on a leash no longer than six feet in length and under the control of the owner at all times. Please clean up after your pets and take the waste with you.



Keep It Clean and Green
Bring a bag or two and carry your trash out with you. Trash cans are not provided. Don't forget to recycle!

NOT PERMITTED

ATVs, alcoholic beverages, drones, smoking and vaping* are NOT permitted in this park.



*Smoking and vaping permitted only inside your personal vehicle.

To report an emergency or suspicious activity, call 1-877-WARN-DEP (1-877-927-6337) or 911.



BELLEPLAIN STATE FOREST
1 Henkinsifkin Road
Woodbine, NJ 08270
609-861-2404

Explore Trail Tracker
The Interactive Trails
Map of NJ State Parks

TRAIL
tracker
spstrailtracker.nj.gov



STATEPARKS.NJ.GOV
FACEBOOK.COM/NEWJERSEYSTATEPARKS
@NEWJERSEYSTATEPARKS

3/25 CMY



State of New Jersey
Department of Environmental Protection
State Parks, Forests & Historic Sites
State Park Service



Belleplain
STATE FOREST