

# Delaware River Basin Commission

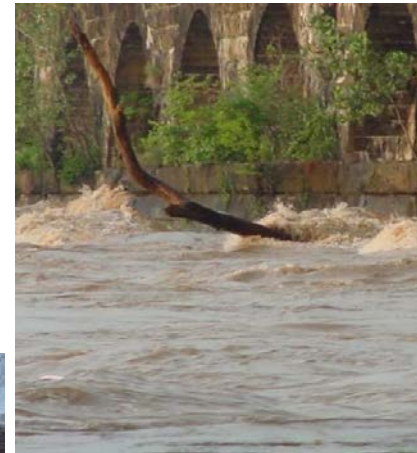
## Climate Modeling Updates

Amy L. Shallcross, P.E.

Manager, Water Resource Operations

Advisory Committee on Climate Change

January 26, 2022



Presented to an advisory committee of the DRBC on January 26, 2022. Contents should not be published or re-posted in whole or in part without permission of DRBC.

# Current Focus - Drought

- \* Drought Management – macro flow management
  - \* SLR impacts
  - \* Climate-affected hydrologic impacts
  - \* Combined SLR and hydrologic Impacts
  - \* Consumptive use trends
  - \* Frequency and severity
  - \* Storage Inventory
- \* Drought Management Plan modifications – add sources, change operations
- \* Review Water Supply Drought Planning Criteria (Water Code Section 2.400.1)

# Proposed Future Efforts

- \* Groundwater availability
- \* Land use/Land cover change
- \* Flooding
- \* Habitat
- \* Climate change considerations for Commission decisions