

Delaware River Basin Commission

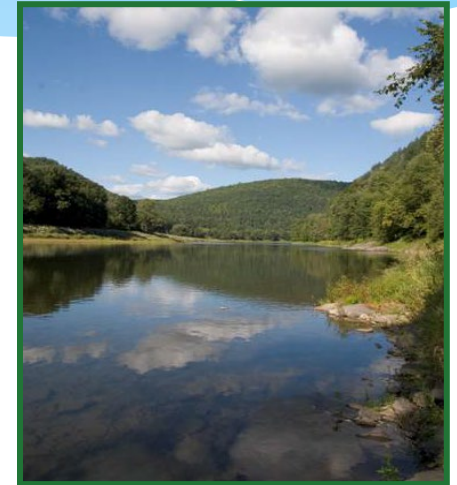
Climate Change Planning at a Watershed Scale

Elizabeth Koniers Brown

Director of External Affairs

May 11, 2022

The Water Center at Penn



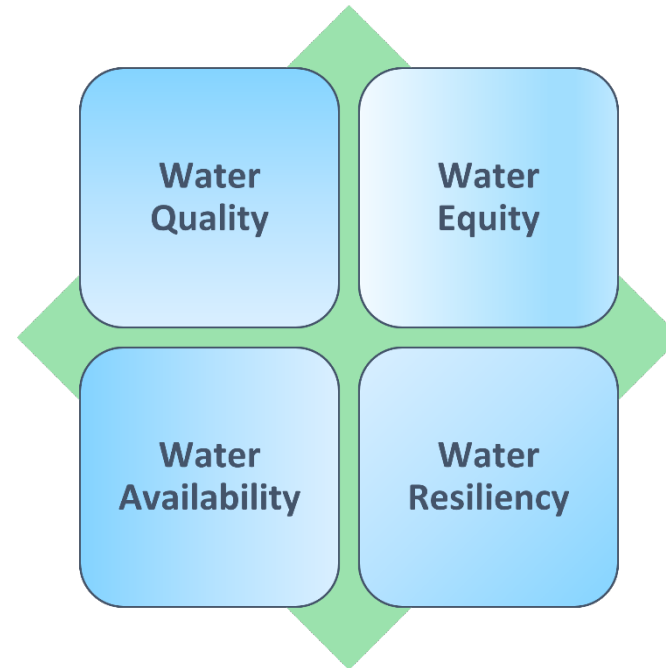
Delaware River Basin Commission

DELAWARE • NEW JERSEY
PENNSYLVANIA • NEW YORK
UNITED STATES OF AMERICA

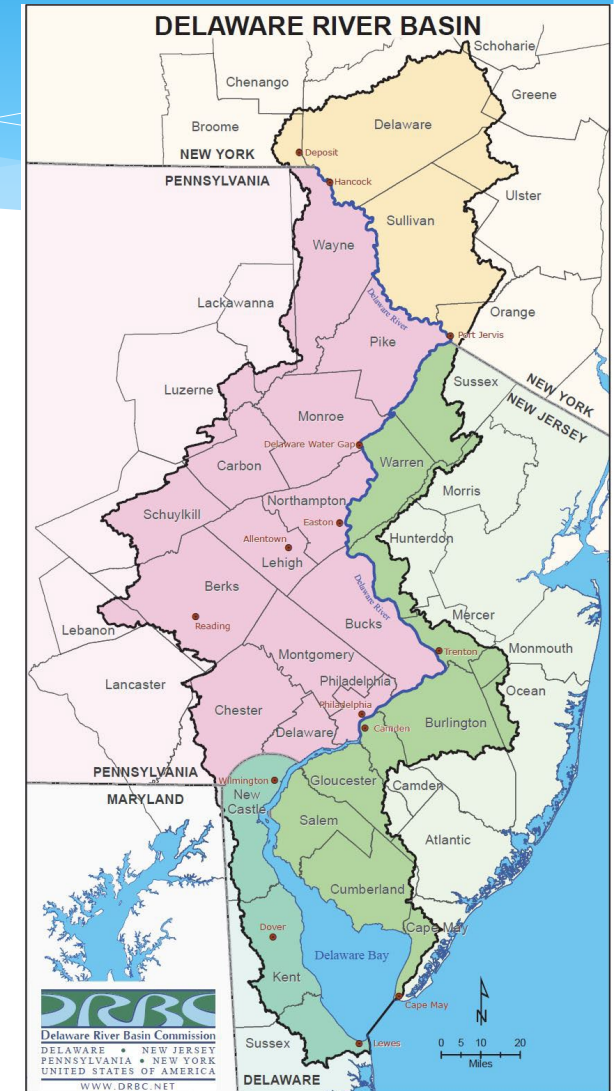
Delaware River Basin Commission

Five Equal Members

- Delaware
- New Jersey
- Pennsylvania
- New York
- Federal Gov.

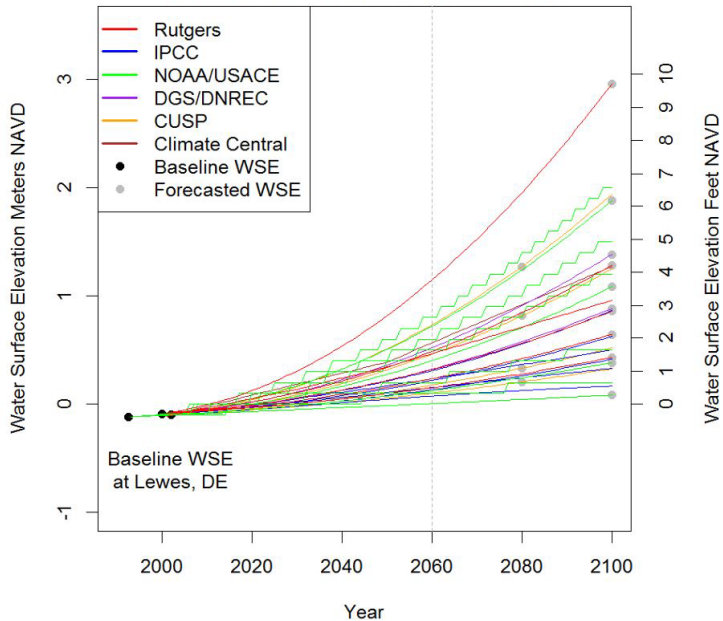


Manage, Protect, Improve the Basin's Water Resources



DRBC & Climate

Sea Level Rise Trajectories by Source

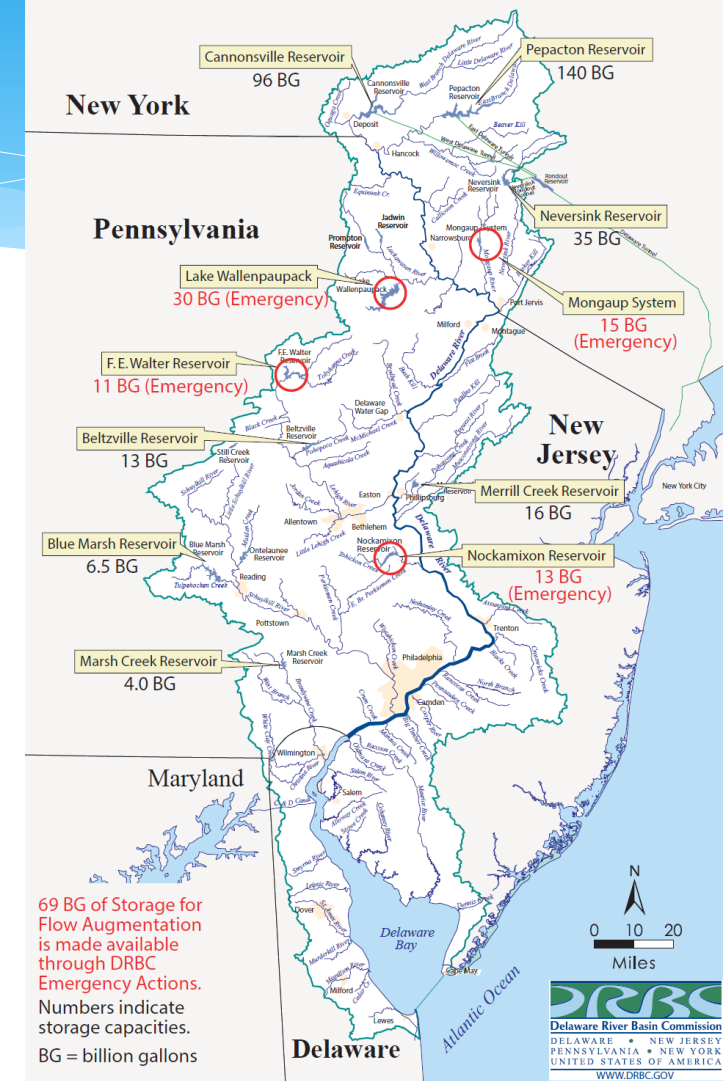


- Sea Level Rise



- Droughts & Floods

Reservoirs for Interstate Flow Management in the Delaware River Basin



- Freshwater storage

DRBC Climate Efforts

Flow Management

- SLR Models
- Salinity predictions
- Hydrologic models

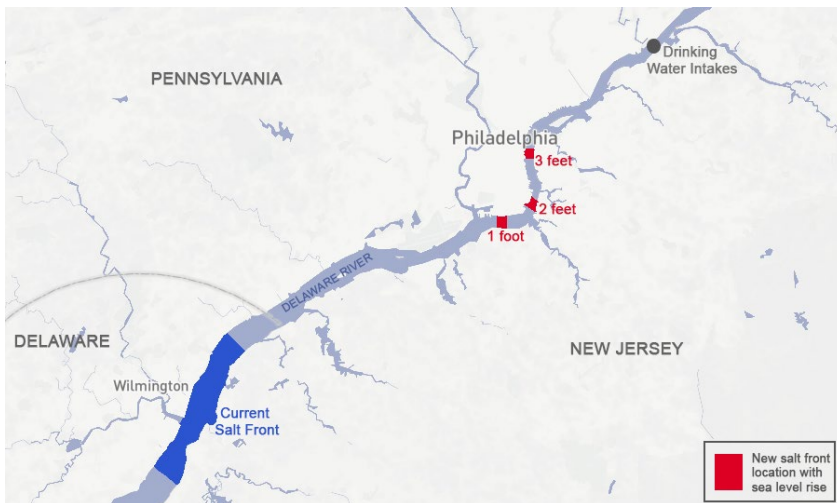
Planning

- Freshwater storage study
- Water demand projections
- Aquatic habitat tool
- Climate Committee



Outreach

- Rural capacity building for flood mitigation
- Weekly hydrology report



Climate & DRBC Communities

- * Water Equity and Impacts
- * Member efforts
- * DEIJ Strategic Plan
- * Enhancing Outreach

¡QUEREMOS ESCUCHAR A LOS RESIDENTES!
Revisión de la Política de Justicia Ambiental

Los comentarios públicos se aceptarán hasta el **miércoles 11 de mayo**

¿De qué se trata?
La Oficina de Justicia Ambiental (OJA) ha revisado la Política de Justicia Ambiental existente (Política EJ). El borrador final de la Política EJ actualizada está listo para recibir comentarios públicos, y queremos conocer su opinión! La nueva política pretende integrar la EJ en más aspectos del trabajo del DEP para las comunidades de EJ. Llevamos a cabo una divulgación, pero este es un proceso de divulgación antes de que se finalice.

Comentarios públicos por escrito

- Envíelos por correo electrónico a: RA-EPOE@dep.gov
- o en la página de comentarios electrónicos del DEP: www.nhhs.dep.pa.gov/eComment/

Audiencias públicas virtuales

- 5 de abril de 2022 a las 5:00 p. m.
- 12 de abril de 2022 a las 6:00 p. m.
- 28 de abril de 2022 a las 12:00 p. m.
- 4 de mayo de 2022 a las 6:00 p. m.

Regístrese para la audiencia pública virtual en www.dep.pa.gov/EJPublicComments o envíe un correo electrónico a RA-EPOE@dep.gov antes de las 24 horas de antelación para presentar su comentario.

¿Solo quiere escuchar? Visite la audiencia pública virtual en www.dep.pa.gov/EJPublicComments o envíe un correo electrónico a RA-EPOE@dep.gov antes de las 24 horas de antelación para presentar su comentario.

Overburdened Communities (OBC)
Under the Environmental Justice Law
Data from 5 Year American Community Survey (2015 to 2019)

Category of OBCs *	Number of Block Groups	Number of People
Minority	1,670	2,405,859
Low Income & Minority	1,165	1,637,572
Low Income	197	274,412
Low Income, Minority, & Limited English	122	185,828
Minority & Limited English	12	11,972
Low Income & Limited English	2	2,574
TOTAL	3,168	4,518,217

*The Environmental Justice Law defines OBCs as block groups with:
(1) At least 35 percent low-income households; or
(2) At least 40 percent of the residents identify as minority or as members of a State recognized tribal community.

For more information, visit: nj.gov/dep/ej/communities.html

Our Shared WATERS
A LOOK AT THE DELAWARE RIVER BASIN

DRBC
Delaware River Basin Commission
DELAWARE • NEW JERSEY
PENNSYLVANIA • NEW YORK
UNITED STATES OF AMERICA

DRBC Future Climate Work & Reflections

- * **DEIJ Strategic Plan**
- * **Science-based future scenarios**
- * **Basin-wide studies: climate and flood**
- * **Climate Forum 2023**

- * **Reflections on past ACCC membership**



Thank you!

Keep in Touch
elizabeth.brown@drbc.gov
www.drbc.gov



Photo Credits:
Slide 3: outside.com
Slide 4: Yale Environment 360
Slide 5: PADEP, NJDEP
Slide 6: Creative Commons

