



City of Easton



Presentation on Flooding

September 21, 2010

3 Major Floods in 22 months !

Flood Categories:

- Major Flood Stage: 30 ft
- Moderate Flood Stage: 26 ft
- Flood Stage: 22 ft
- Action Stage: 20 ft

Delaware River Flood (Crest) Elevations:

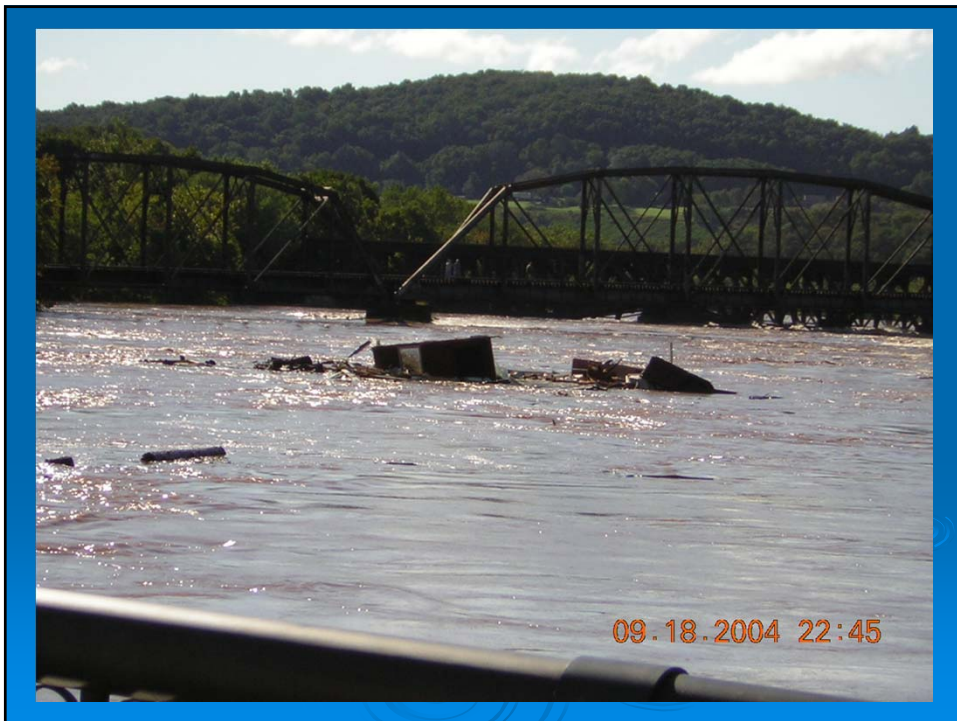
- September 2004 – 33.5 ft
- April 2005 – 37.2 ft
- June 2006 – 37.1 ft



Last major previous flood: 43.7 ft in 1955

Point of Reference: at 18 ft, the Delaware backs up the Lehigh River and causes flooding

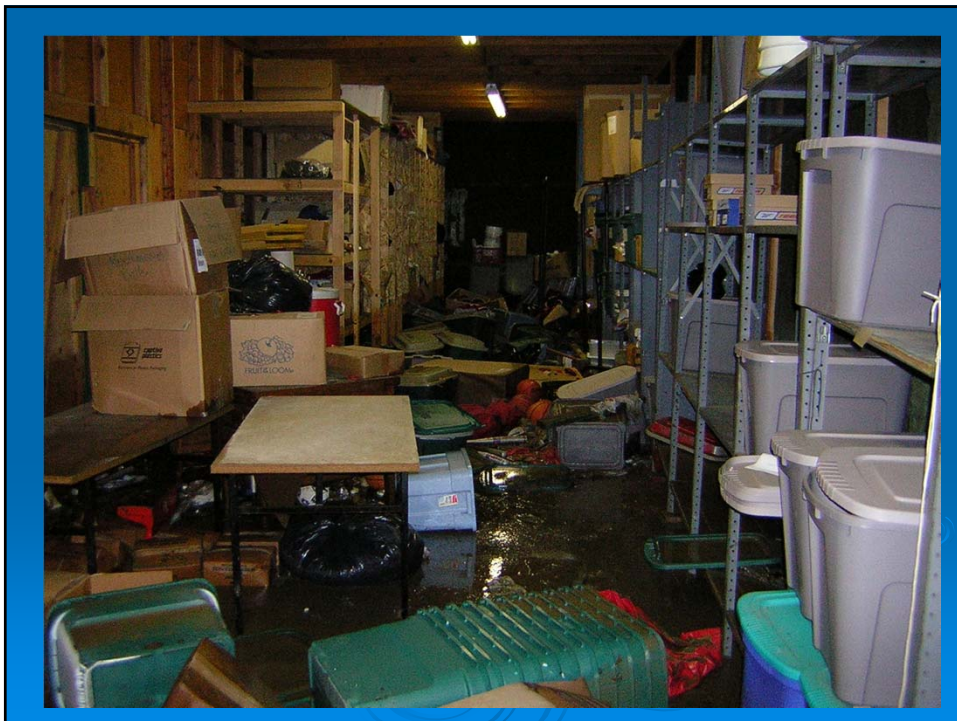
Stages: reflect measurements from the 1929 vertical datum at Easton



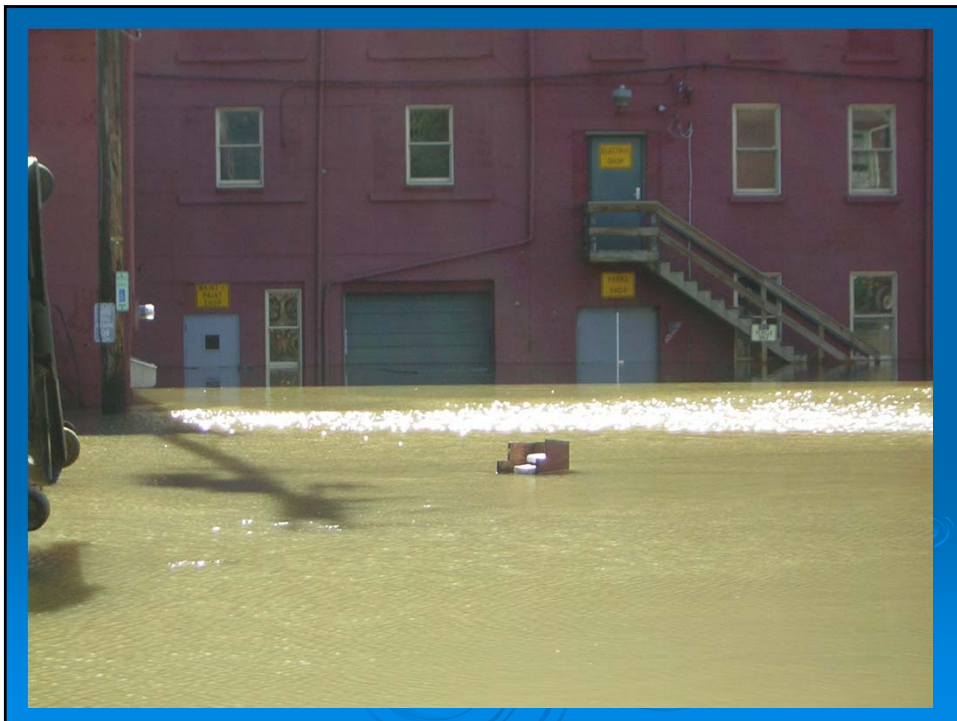
Cleanup vs. Reconstruction

Public Works Complex









DPW Complex Improvements

- All offices moved to 2nd story out of flood elevation
- All critical equipment either on wheels, in trailers, or stored in high racks. Mechanical items have quick disconnects
- Very little inventory except what is immediately necessary including road salt
- Entire recycling center can be moved in 2 hours including sheds, compactor, containers

- SOP's are critical – at forecast of 28' of Delaware River crest we evacuate the complex, trash quantity limits are removed for residents residing on waterways, etc.
- all personnel on call, waterways monitored constantly, we have pre-determined muster points and off-site parking areas for all equipment
- We must be functioning properly so that we can deliver services to the community



Waterfront Restroom Bldg.

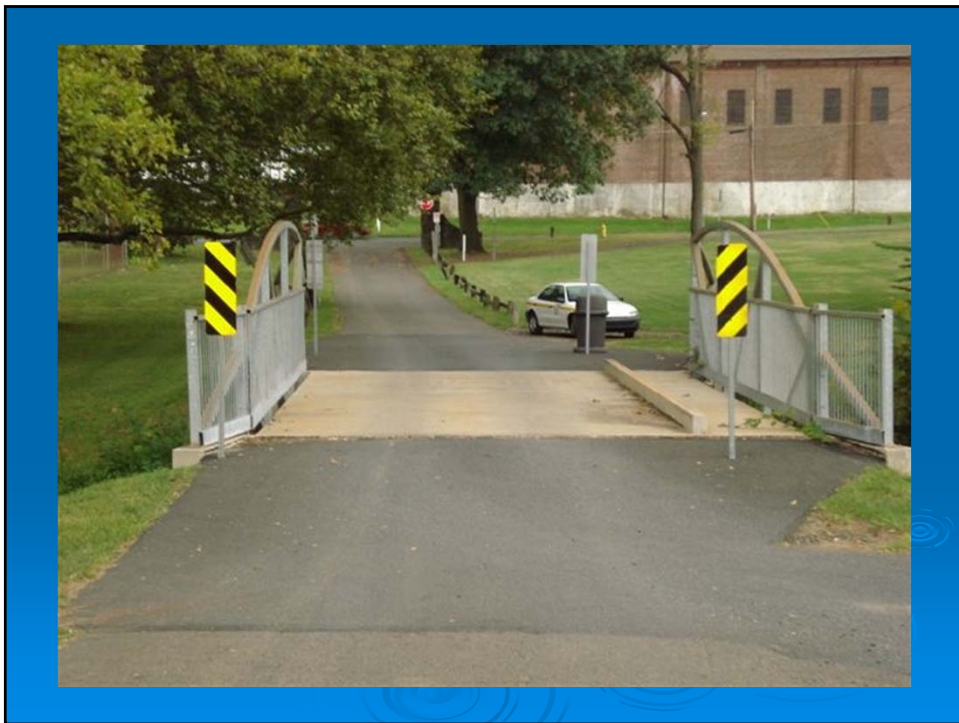




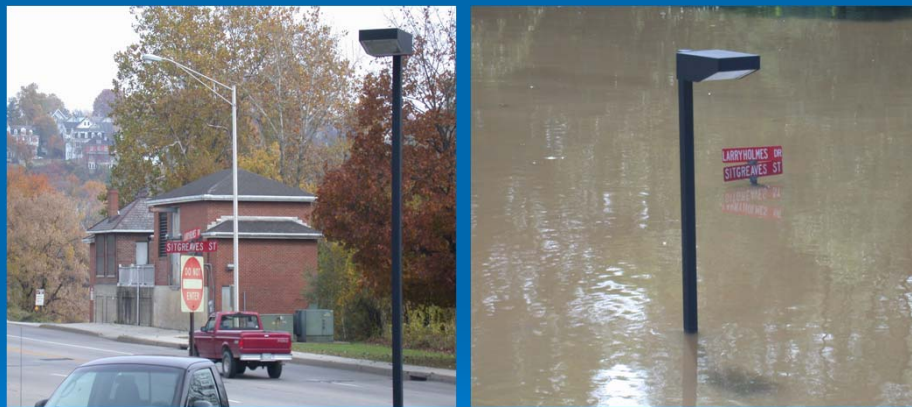
Lower Hackett Bridge







Sewage Pumping Stations

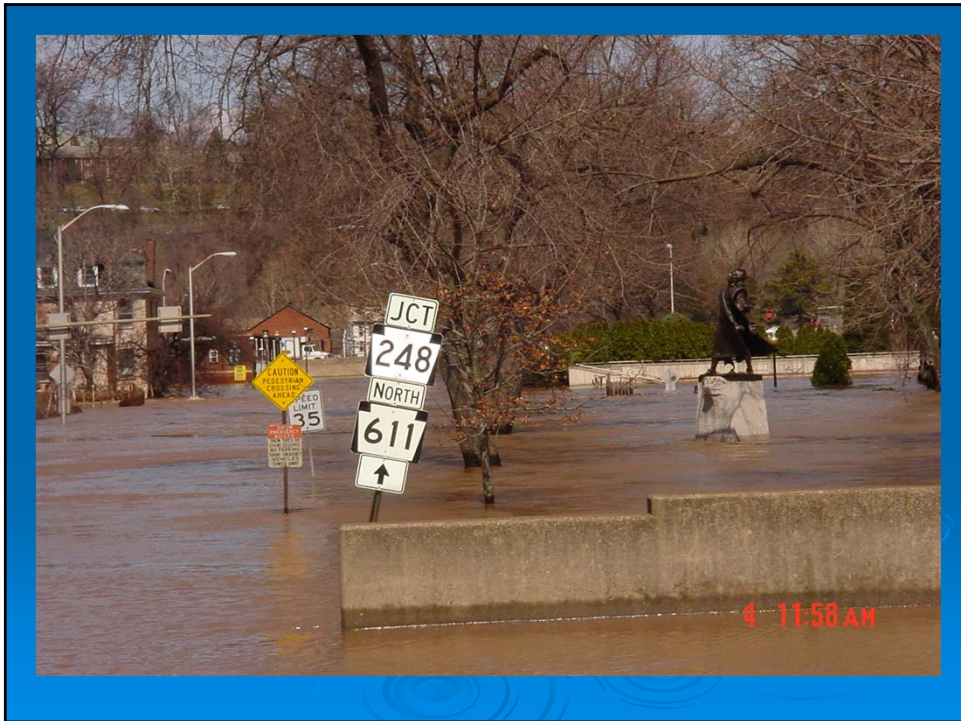












Stuff We've Learned

- Written procedures, training, and good planning are essential to reduce normalcy ASAP
- Need to adjust operations to acclimate to flooding – smart rack system storage, raising up all critical infrastructure, quick connects for removal, storage of parts & inventory, prior agreements for disposal and other services, etc.
- Have to have excellent communications between police, fire, DPW, other utilities – need to get to know all counterparts