



DRBC

Water Management Advisory Committee Meeting

June 19, 2014
West Trenton, NJ



Introductions

- Agenda review
- Approve meeting minutes of 10/22/2013
- Procedures – [review of proposed revisions](#)
- Membership status
- Select new Chair / Vice-Chair
- Select next meeting date

Sustainable Water Future 2060 Update

Collaborative Efforts

- National Science Foundation Grant
- IWRSS
- USGS Water Census
 - Water demand projections
 - Downscale climate models
 - WATER model
 - Ecoflows for main-stem Delaware River
- ACOE
 - IWRM
 - Salinity Model

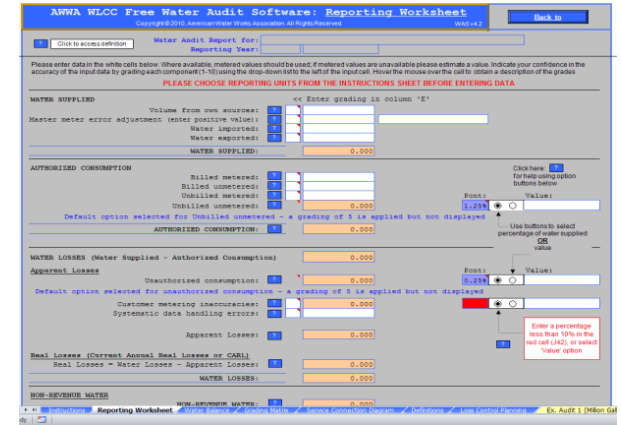


Sustainable Water Future 2060 Update

DRBC Led Efforts

- Analysis Tools (see matrix handout)
- Scenarios (see matrix handout)
- Current Studies
 - Blue Marsh Reservoir Research
 - OASIS Planning Support Tool (PST)
 - Water use / demand data
- Future DRBC Efforts
 - Pilot OASIS PST in sub-watershed area of DRB
 - Beltzville Reservoir Research
 - Consumptive Use Make-up Research
 - Power Generators
 - Brandywine Creek





DRBC

Water Audit Program: 6/19/2014 WMAC Update

The purpose of DRBC's water audit program is to track how efficiently water is moved from its source to the customer.

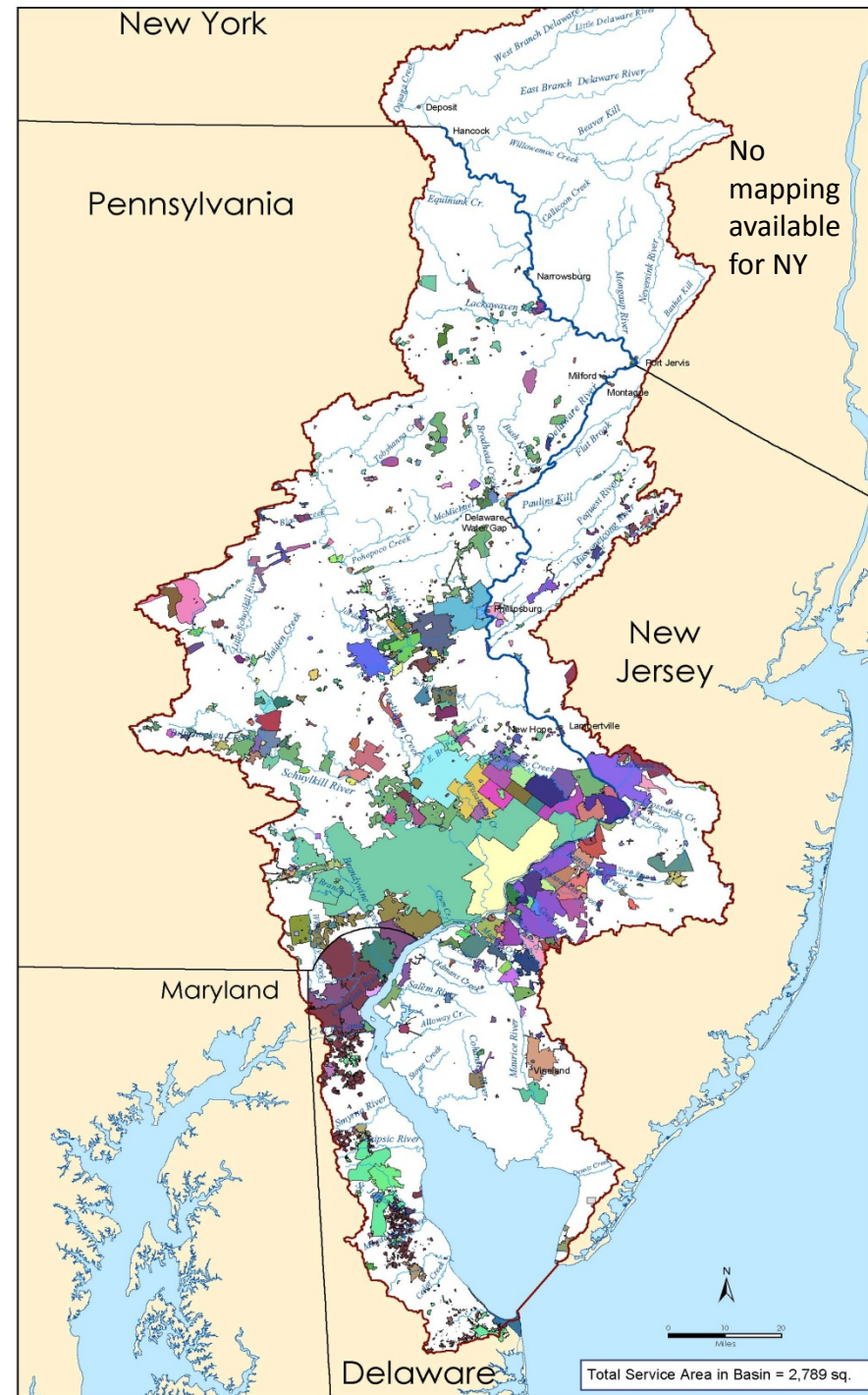


Recent DRBC Water Audit Activity

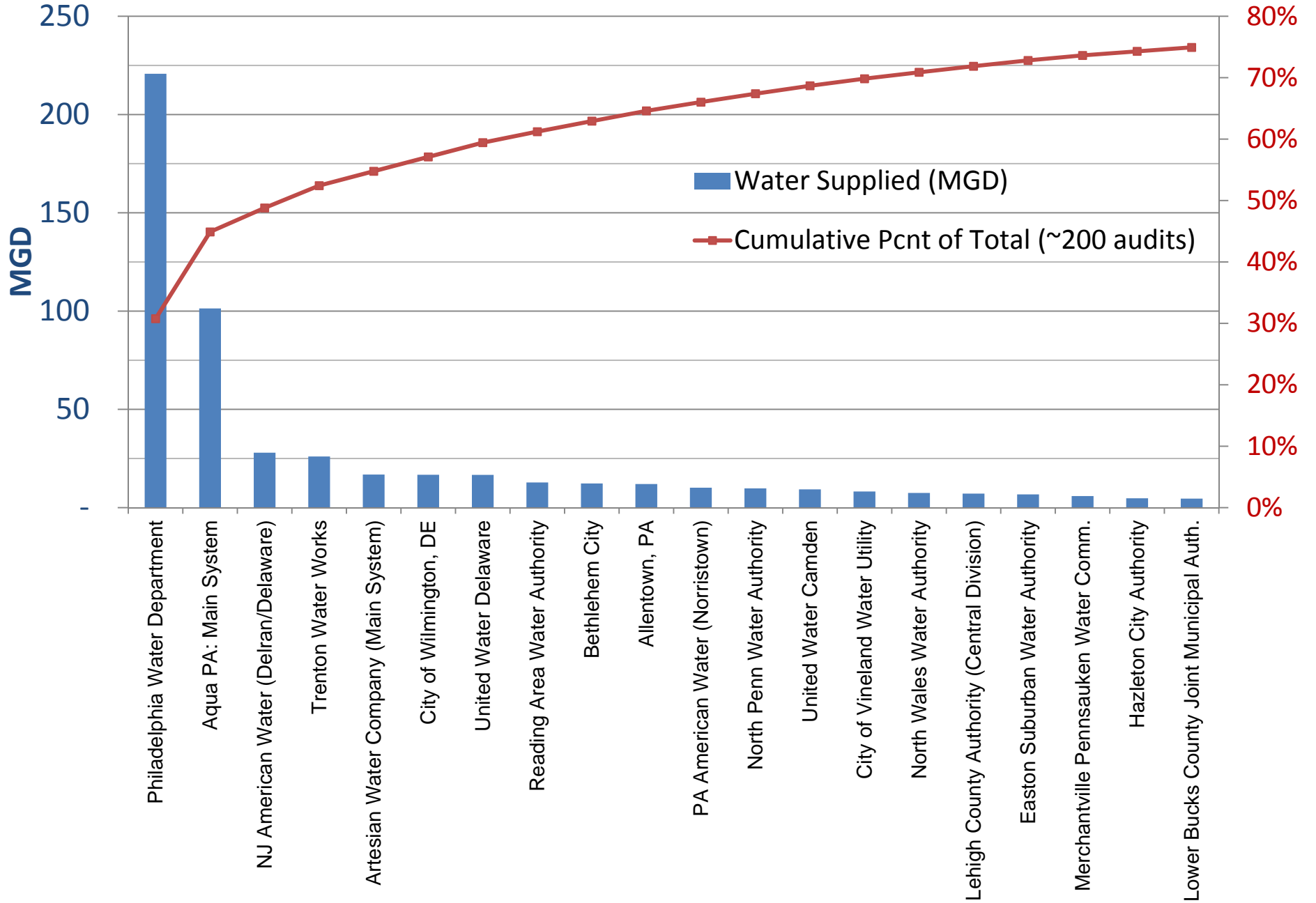
Date	Activity
Oct. 2013 - Mar. 2014	<ul style="list-style-type: none"> • CY2012 reporting completed • CY2013 reports collected (Mar 31 deadline)
Mar-2014	<ul style="list-style-type: none"> • DRBC issued a press release • 3-page summary of CY2012 result posted to DRBC website
Apr-2014	<ul style="list-style-type: none"> • Trenton Times water loss article
May-2014	<ul style="list-style-type: none"> • DRBC presentation to NJDEP staff • AWWA Nat. Conf. abstract submitted
Jun-2014	<ul style="list-style-type: none"> • Discussion with Commissioners • Current Status (docket level tracking): CY2012: 225/261 CY2013: 222/274
Ongoing	<ul style="list-style-type: none"> • DRBC CY2012 water audit report in progress • DRBC / AWWA involvement: New software (v5) / DRBC program featured in M36 Manual • SRBC Mtg: July 2014 • DRBC Questionnaire / User Feedback Survey

Public Water Supply Service area in the Delaware River Basin

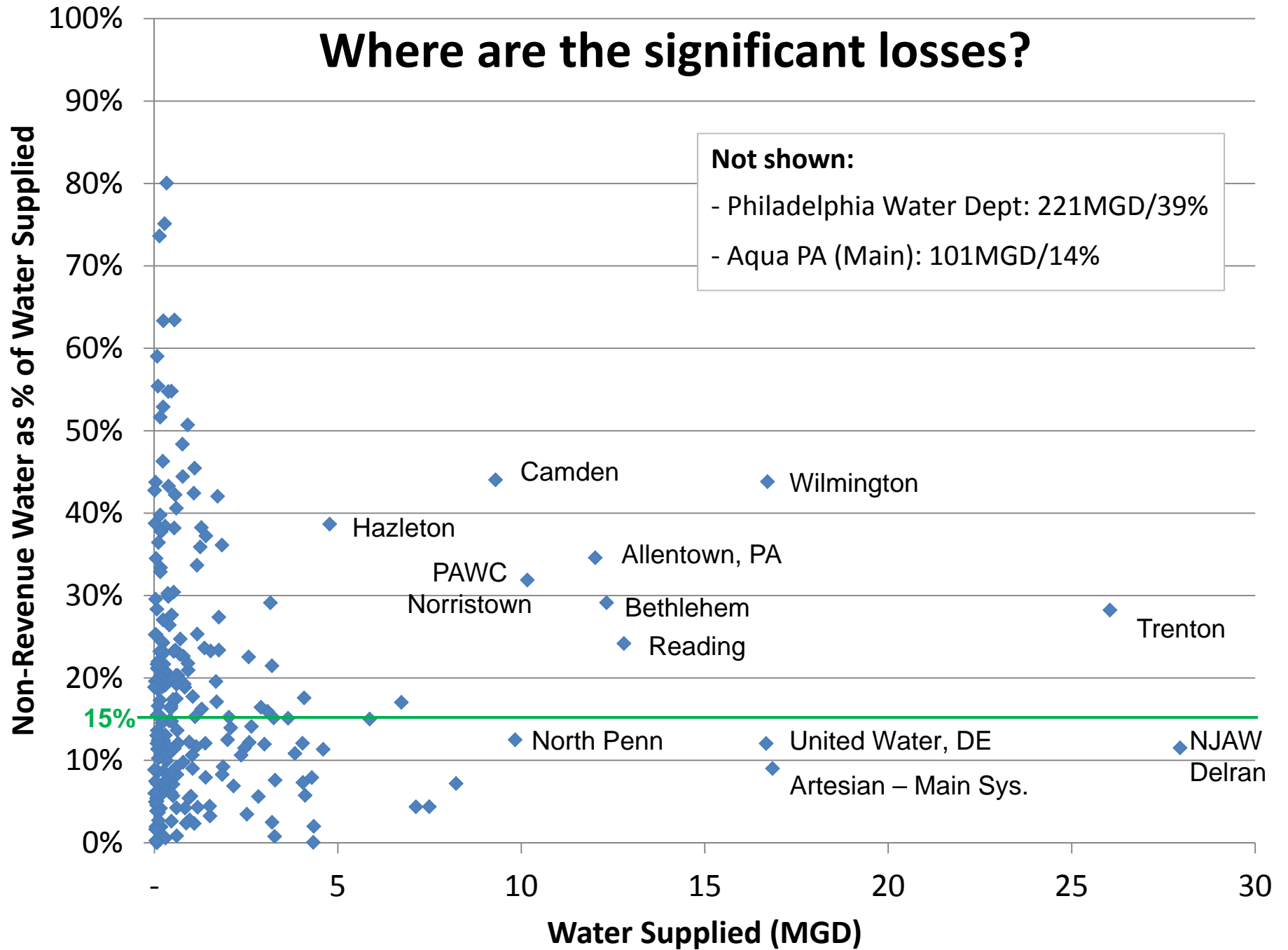
- Total PWS withdrawals:
~785 MGD
- 2nd largest water use sector in the Basin
- Approx. 21% of Basin covered by service area
- 80% of basin residents (6.7 million customers)
- Approx. 275 systems subject to Water Audit Requirement



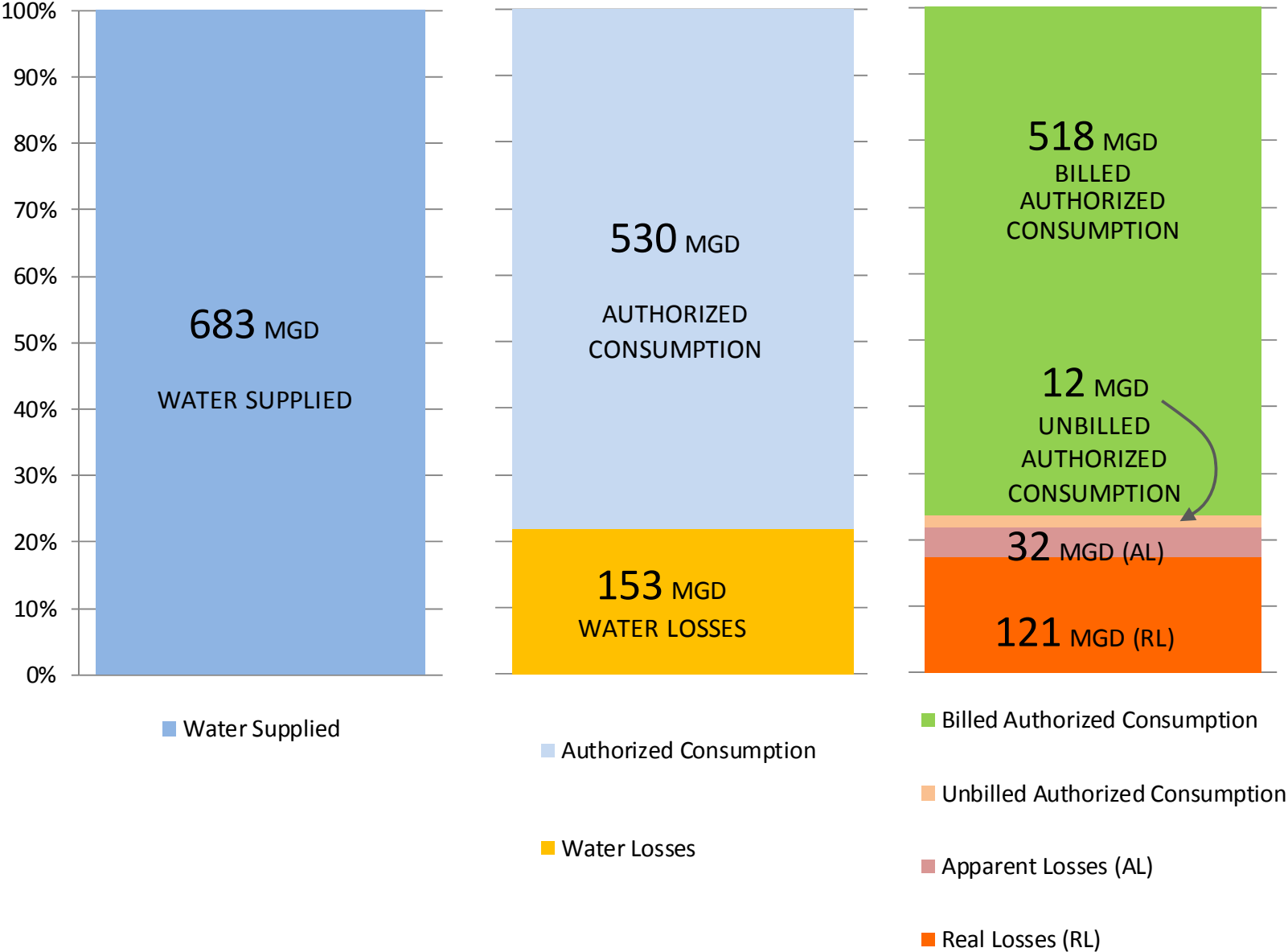
Water Supplied in CY2012 (MGD) - 20 largest DRB systems



Where are the significant losses?



DRBC water audit program summary (CY2012); Aggregate of 208 individual water systems.



Conclusions and Next Steps

- CY2012 Water Audit (~225 audits) captured ~90% of total PWS volume
- Non-revenue water has an estimated value of \$105 million to water utilities in the DRB
- Positive feedback/Improved response for CY2013
- Evolution not Revolution
- Coordinate with State Partners / WMAC
- New Performance Indicators / Metrics
- Continue partnership with AWWA
 - v5 Audit Software – Summer 2014
 - DRBC featured in AWWA M36 Manual 2015



Ecological Flows Update

- Commissioners' technical staff have TNC report
- DRBC staff meeting with Commissioner staffs individually this summer to review options for next steps
- Initial concept is to form a workgroup of Commissioner staffs to develop strategy

State Water Supply Program Updates

DRBC Interactive Map Demonstration

HOME ▾ DRBC Approved Docket Map MODIFY MAP [Sign In](#)

Details | Basemap | Share | Print | Measure | Bookmarks |

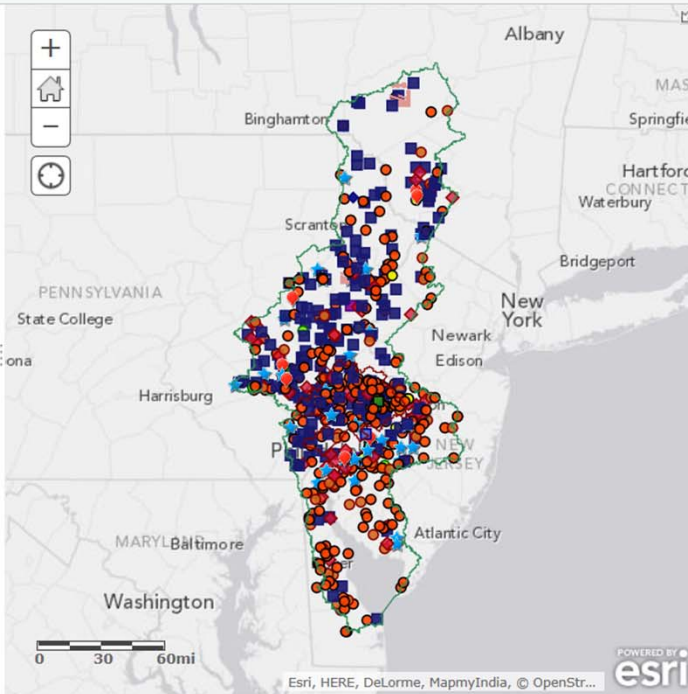
About | Content | Legend

DRBC Approved Docket Map

The docket and permit holder map shows the location of projects having a current approval from DRBC or those currently engaged in the renewal process.

Web Map by karenreavy
Last Modified: May 27, 2014
★★★★★ (0 ratings, 0 comments, 968 views)

[More Details...](#)



The map displays the Delaware River basin, bounded by Pennsylvania to the west, New York to the east, and Maryland to the south. Major cities labeled include Albany, Springfield, Hartford, Waterbury, Bridgeport, Newark, Edison, New York, Atlantic City, Baltimore, Washington, Harrisburg, Scranton, and Binghamton. The map is populated with numerous colored markers (red, orange, blue, green) representing project locations. A scale bar at the bottom indicates 0, 30, and 60 miles. The map is powered by Esri.

Esri.com · Help · Terms of Use · Privacy · Contact Esri · Report Abuse

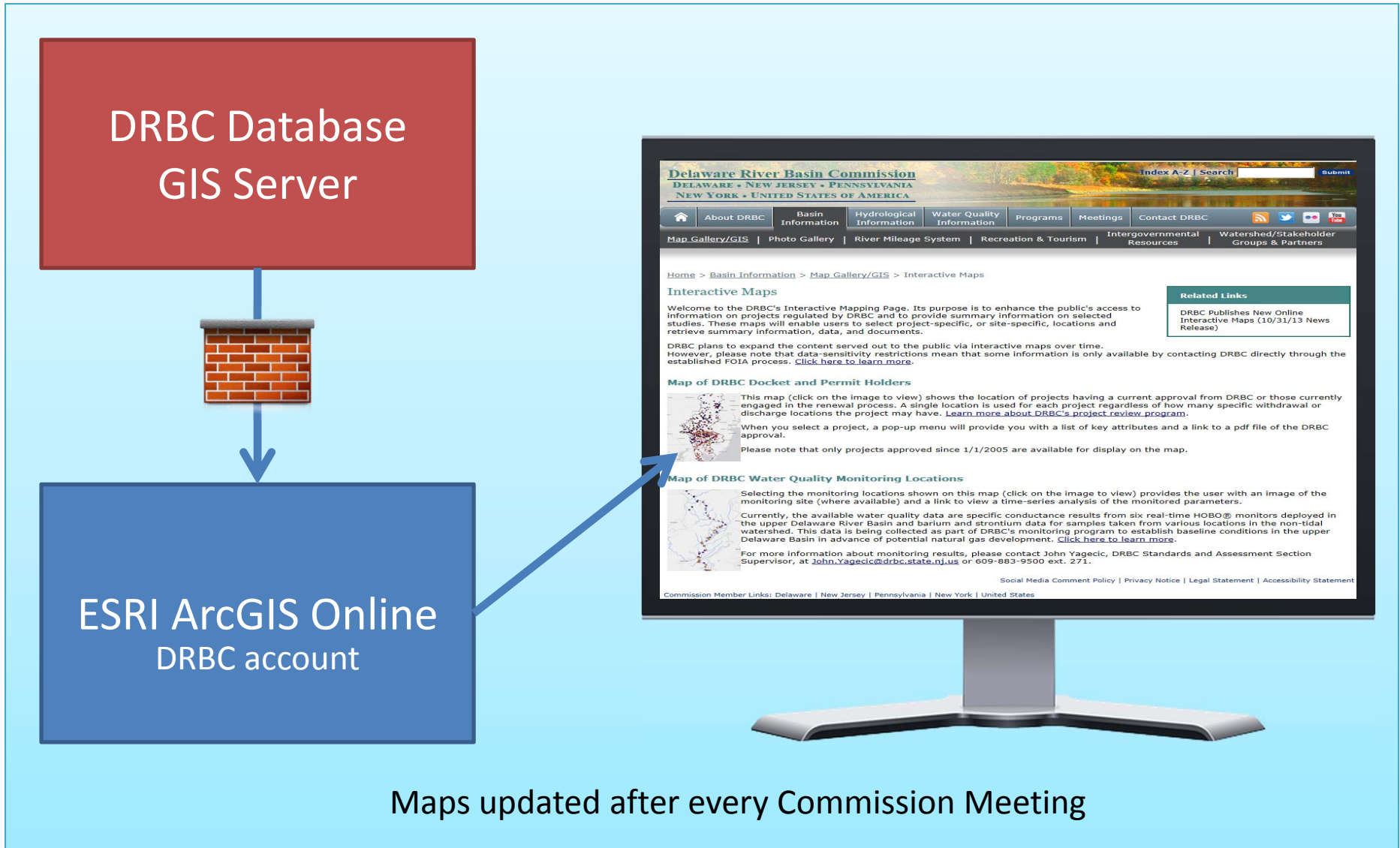
Overview

Goal: Make data more accessible to the public

- **2011:** “Web Portal” originally in Scope of Work for IT Upgrades Project
- **2012:** New technology available: **ESRI ArcGIS Online**
DRBC staff evaluation / free trial
- **2013:** Purchased ESRI Subscription.
Cost effective: (~25% of original 10yr costs)
Staff expertise used to update / add maps
- **Oct 2013:** Interactive Mapping Webpage went live on DRBC website

Interactive Mapping Webpage

Infrastructure Overview



Maps updated after every Commission Meeting

DRBC's Interactive Mapping Webpage: Demo

[Begin Demo](#)

Summary

- Interactive maps provide an effective way to communicate information to the public
- Improves transparency
- Resources optimized through partnerships to leverage infrastructure (ESRI, NJOIT, cloud)
- Over 500 hits in the first month (~1,500 to date)
- DRBC plans to add additional maps and features

www.drbc.net



Future Meeting Topics

- Groundwater?