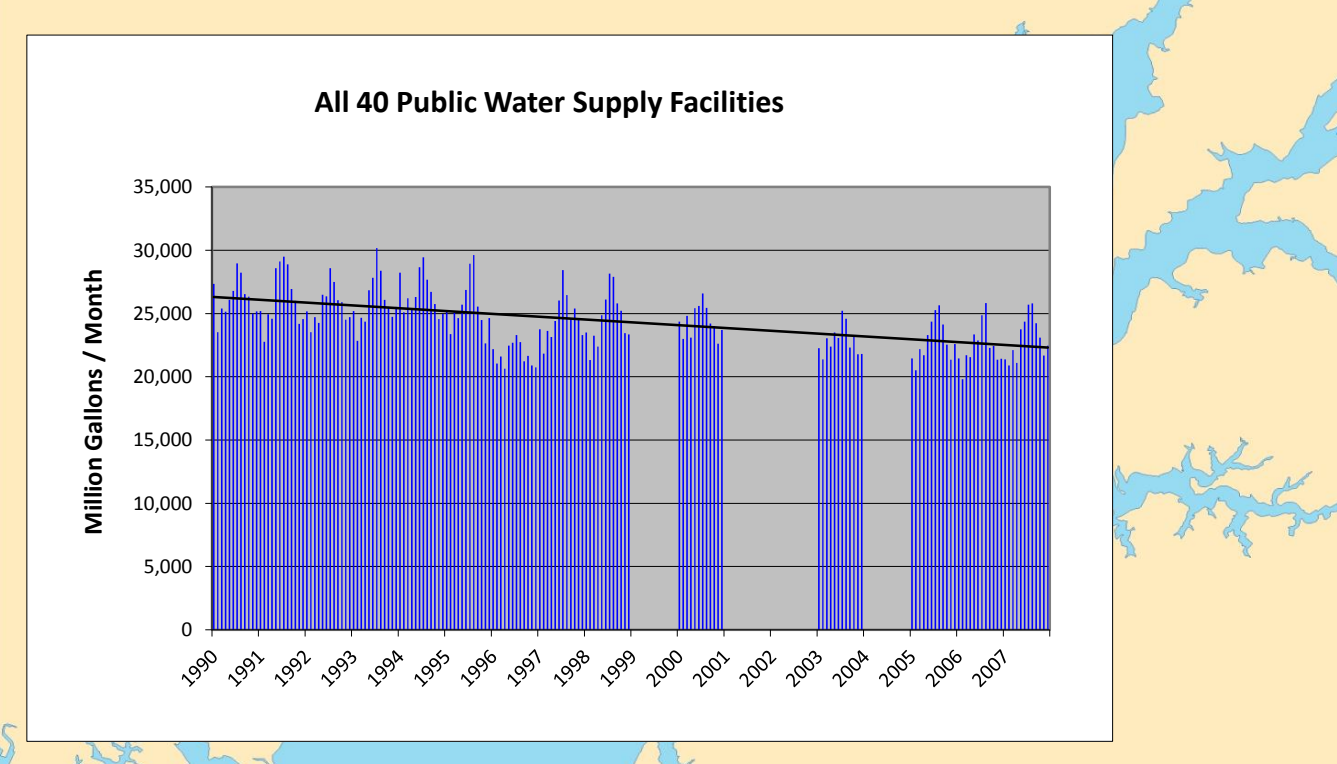
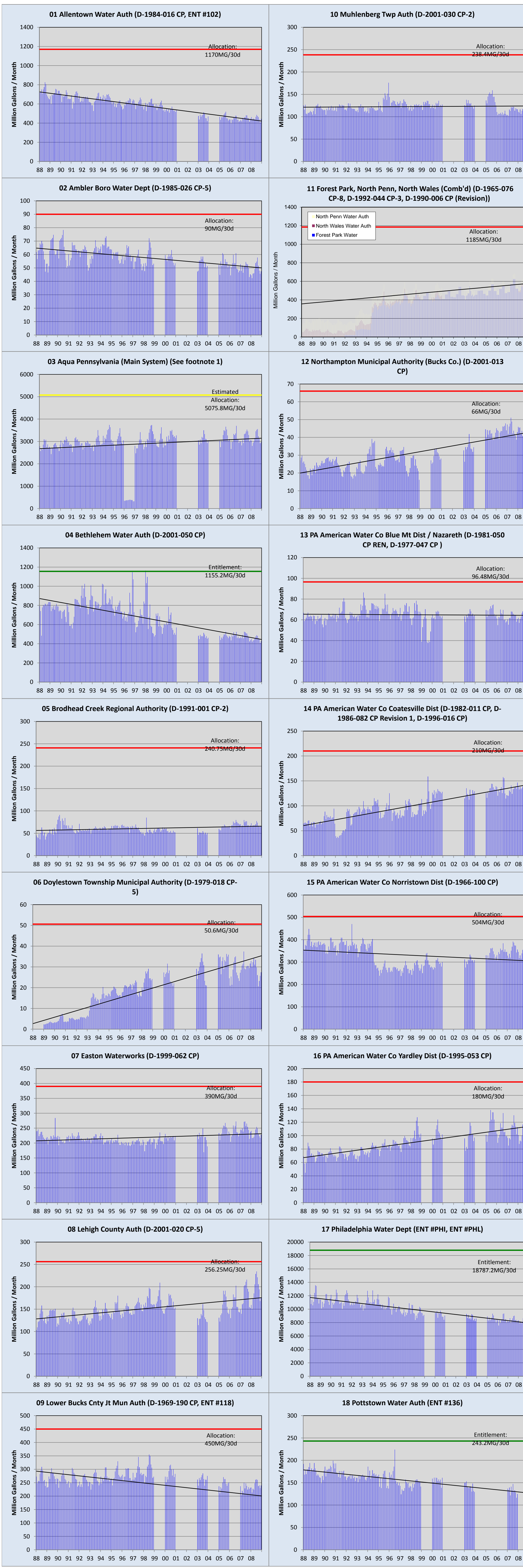
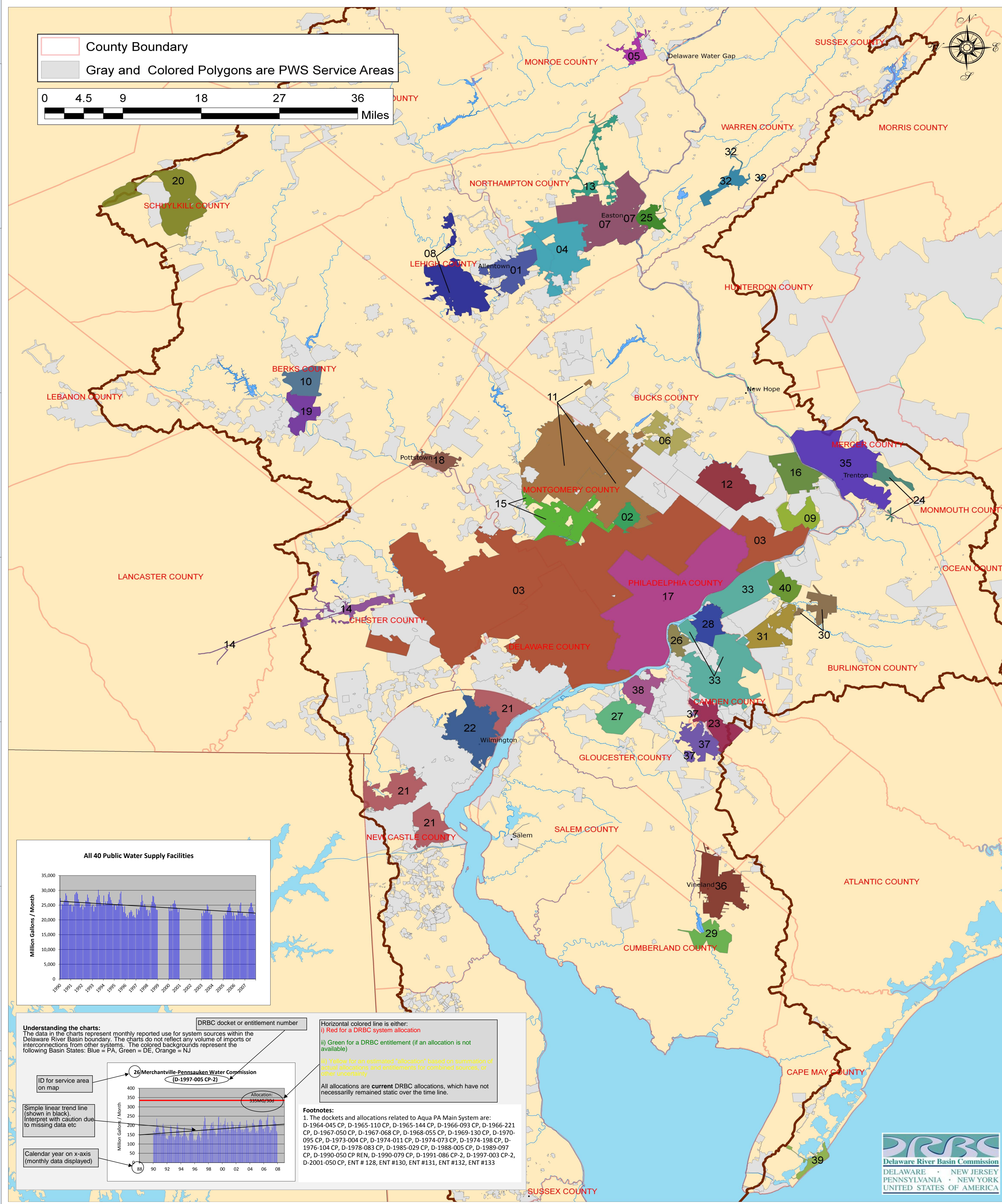


# Water Withdrawal History of 40 PWS Systems in the DRB

The 40 systems shown in this graphic represent a cumulative 81% of total water use by the 750 public water supply systems in the Delaware River Basin



**Understanding the charts:**  
 The data in the charts represent monthly reported use for system sources within the Delaware River Basin boundary. The charts do not reflect any volume of imports or interconnections from other systems. The colored backgrounds represent the following Basin States: Blue = PA, Green = DE, Orange = NJ.

**DRBC docket or entitlement number**  
 ID for service area on map

**Simple linear trend line (shown in black):**  
 Interpret with caution due to missing data etc.

**Calendar year on x-axis (monthly data displayed)**

**Footnotes:**  
 1. The dockets and allocations related to Aqua PA Main System are: D-1964-045 CP, D-1965-110 CP, D-1965-144 CP, D-1966-093 CP, D-1966-221 CP, D-1967-050 CP, D-1967-068 CP, D-1968-055 CP, D-1969-130 CP, D-1970-095 CP, D-1973-004 CP, D-1974-011 CP, D-1974-075 CP, D-1974-194 CP, D-1976-104 CP, D-1978-083 CP, D-1985-029 CP, D-1988-005 CP, D-1989-097 CP, D-1990-050 CP REN, D-1990-079 CP, D-1991-086 CP-2, D-1997-003 CP-2, D-2001-050 CP, ENT # 126, ENT #130, ENT #131, ENT #132, ENT #133

**Horizontal colored line is either:**  
 a) Red for a DRBC system allocation  
 b) Green for a DRBC entitlement (if an allocation is not available)  
 c) Yellow for an estimated "allocation" based on summation of those allocations and entitlements for combined sources of water availability.

All allocations are current DRBC allocations, which have not necessarily remained static over the time line.

