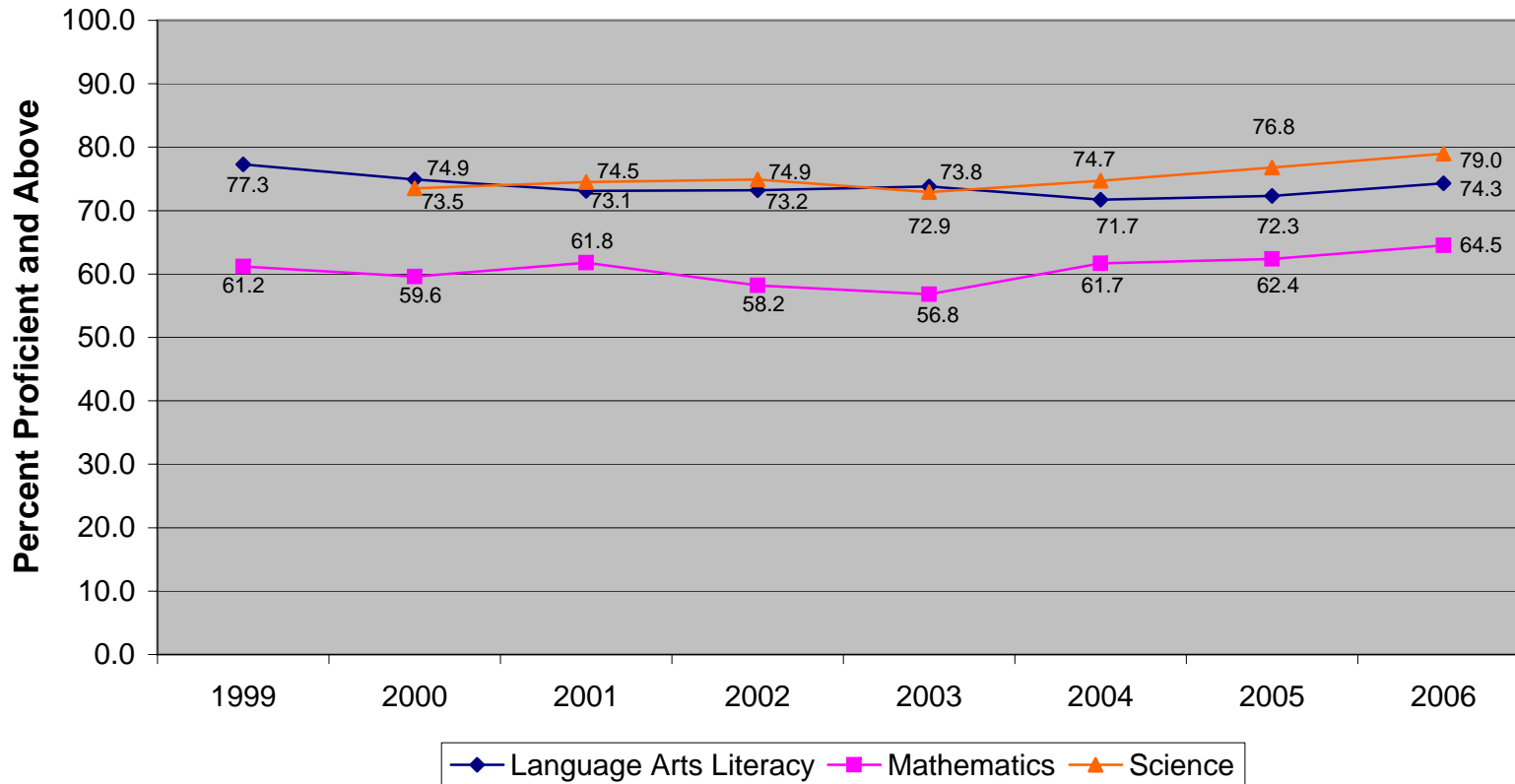
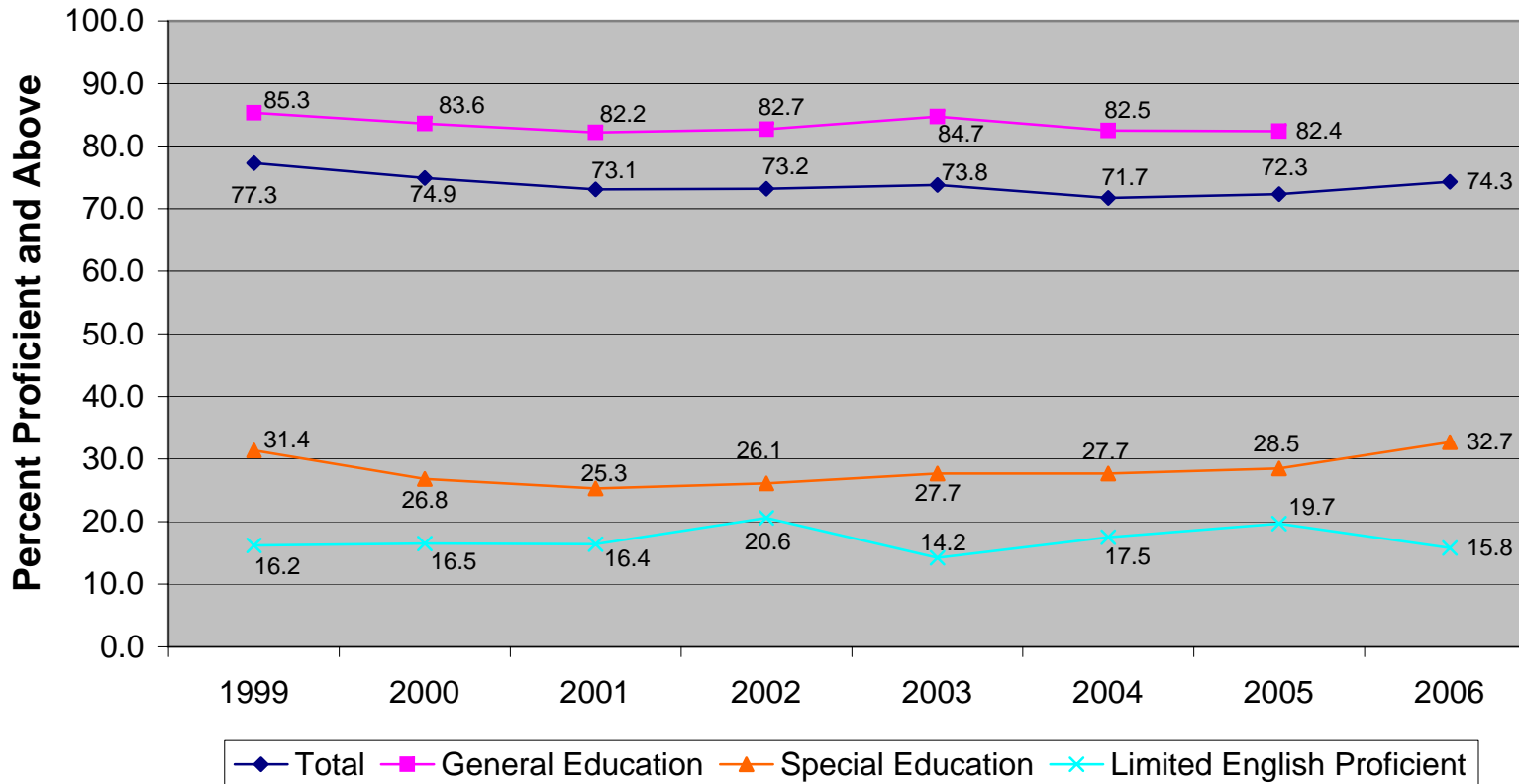


**New Jersey Grade Eight Proficiency Assessment
Percent Proficient and Above for All Students by Content Areas (1999-2006)**



New Jersey Grade Eight Proficiency Assessment
Language Arts Literacy Percent Proficient and Above by Subgroups (1999-2006)^{1,2,3}

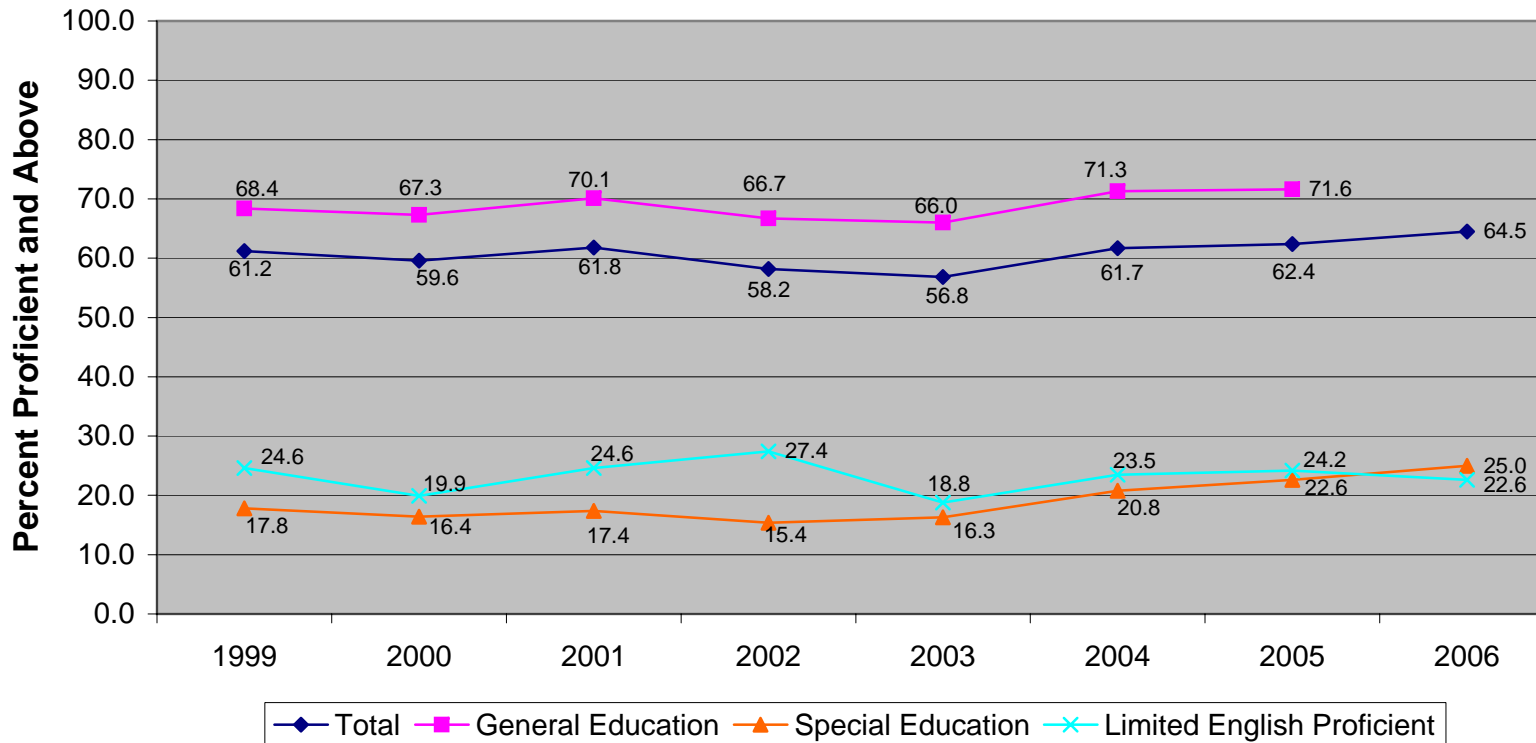


¹2006: General Education is not reported in the state summary.

²2006: LEP is reported in three categories: LEP (current+former), LEP current, and LEP former.

³2006: LEP current is identical to category titled LEP in previous years.

**New Jersey Grade Eight Proficiency Assessment
Mathematics Percent Proficient and Above by Subgroups (1999-2006)^{1,2,3}**

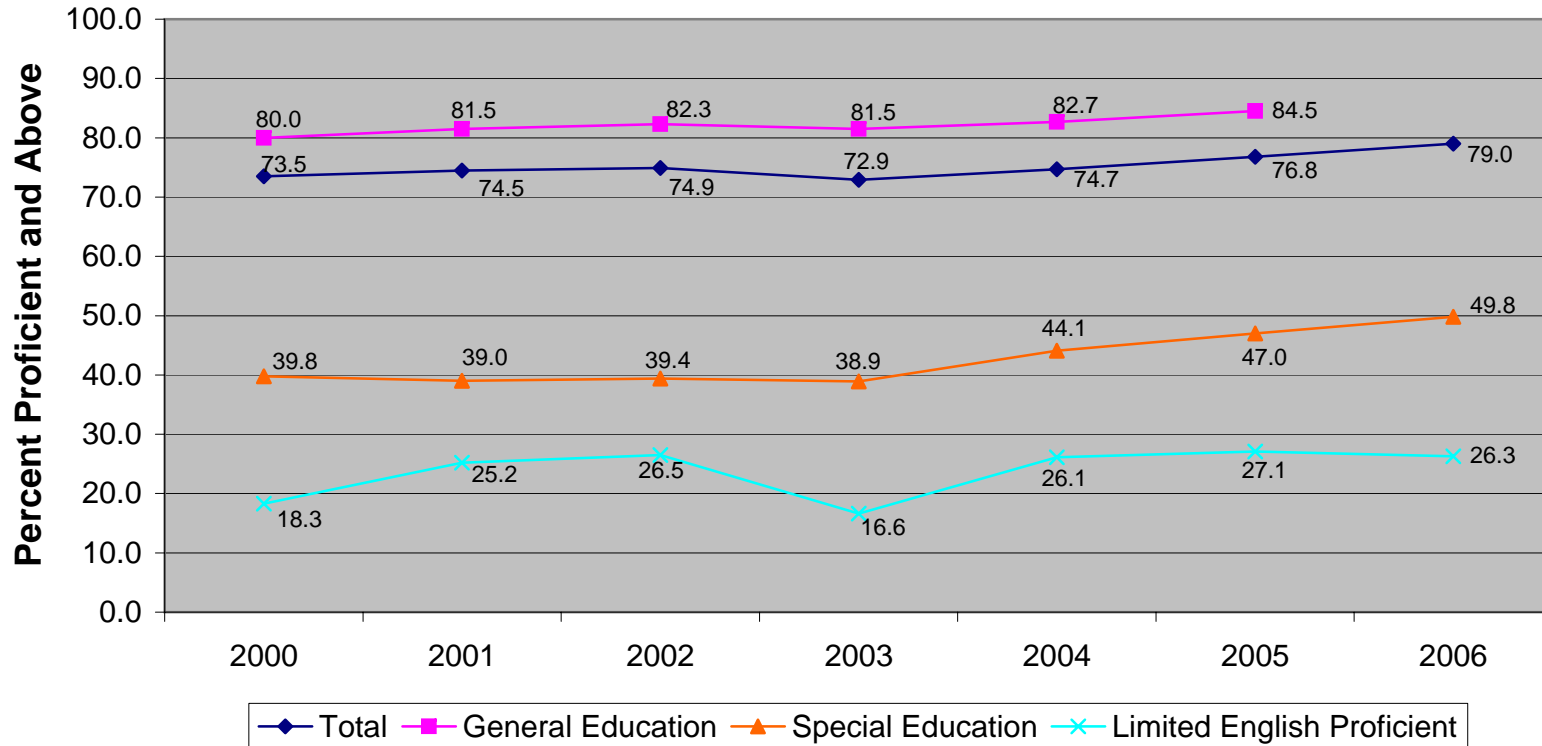


¹2006: General Education is not reported in the state summary.

²2006: LEP is reported in three categories: LEP (current+former), LEP current, and LEP former.

³2006: LEP current is identical to category titled LEP in previous years.

**New Jersey Grade Eight Proficiency Assessment
Science Percent Proficient and Above by Subgroups (2000-2006)^{1,2,3}**

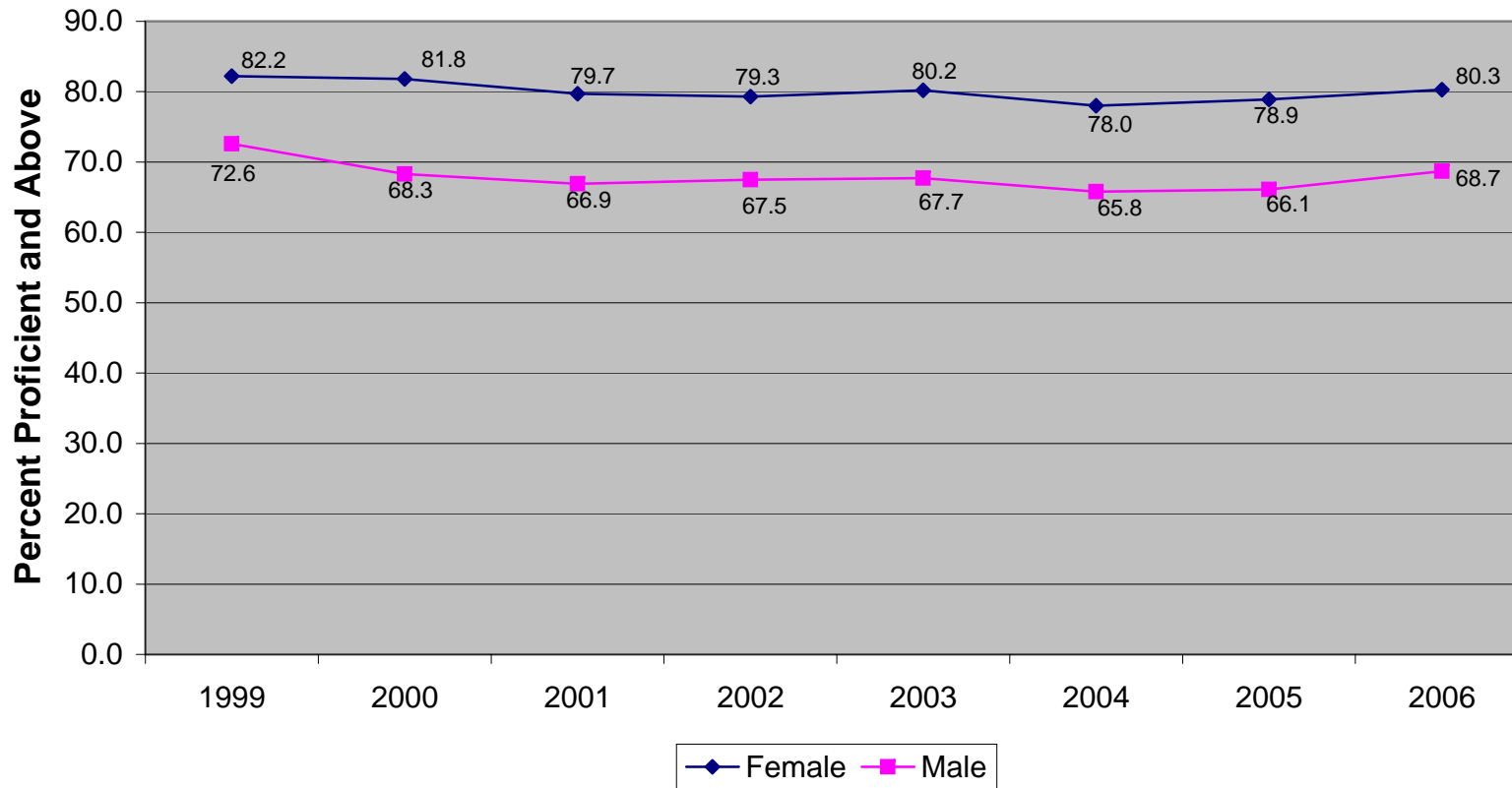


¹2006: General Education is not reported in the state summary.

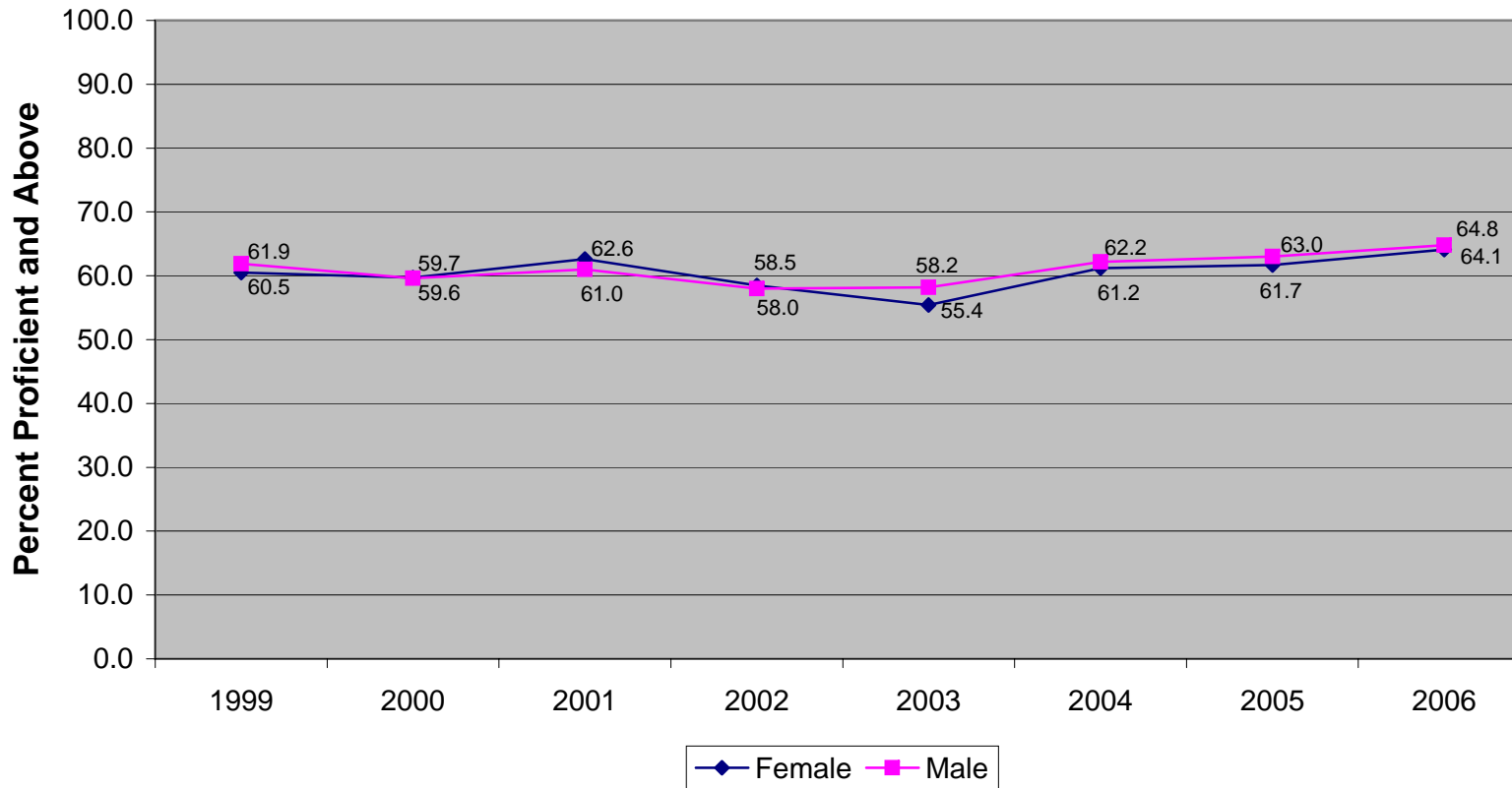
²2006: LEP is reported in three categories: LEP (current+former), LEP current, and LEP former.

³2006: LEP current is identical to category titled LEP in previous years.

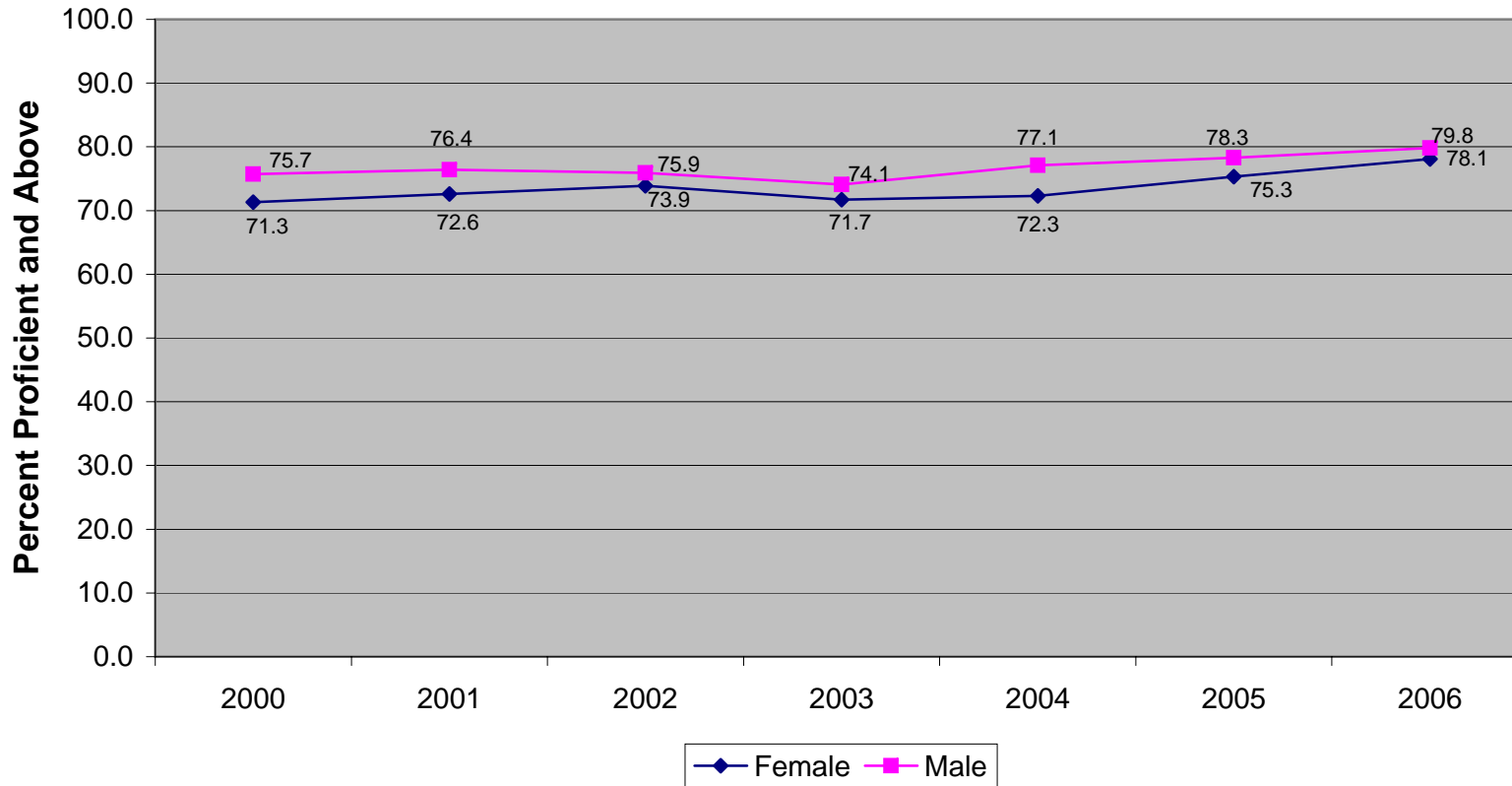
**New Jersey Grade Eight Proficiency Assessment
Language Arts Literacy Percent Proficient and Above by Gender (1999-2006)**



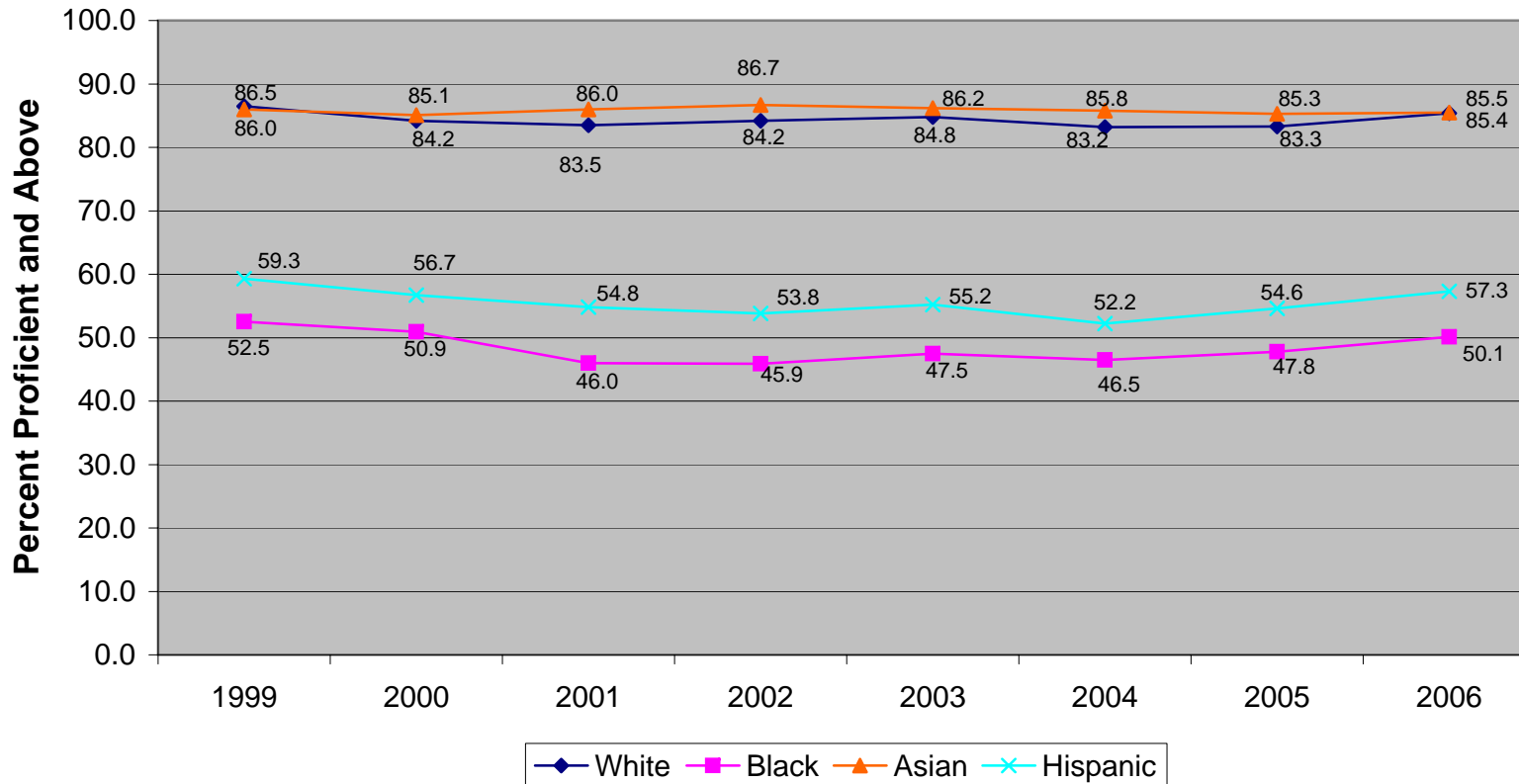
**New Jersey Grade Eight Proficiency Assessment
Mathematics Percent Proficient and Above by Gender (1999-2006)**



New Jersey Grade Eight Proficiency Assessment Science Percent Proficient and Above by Gender (2000-2006)

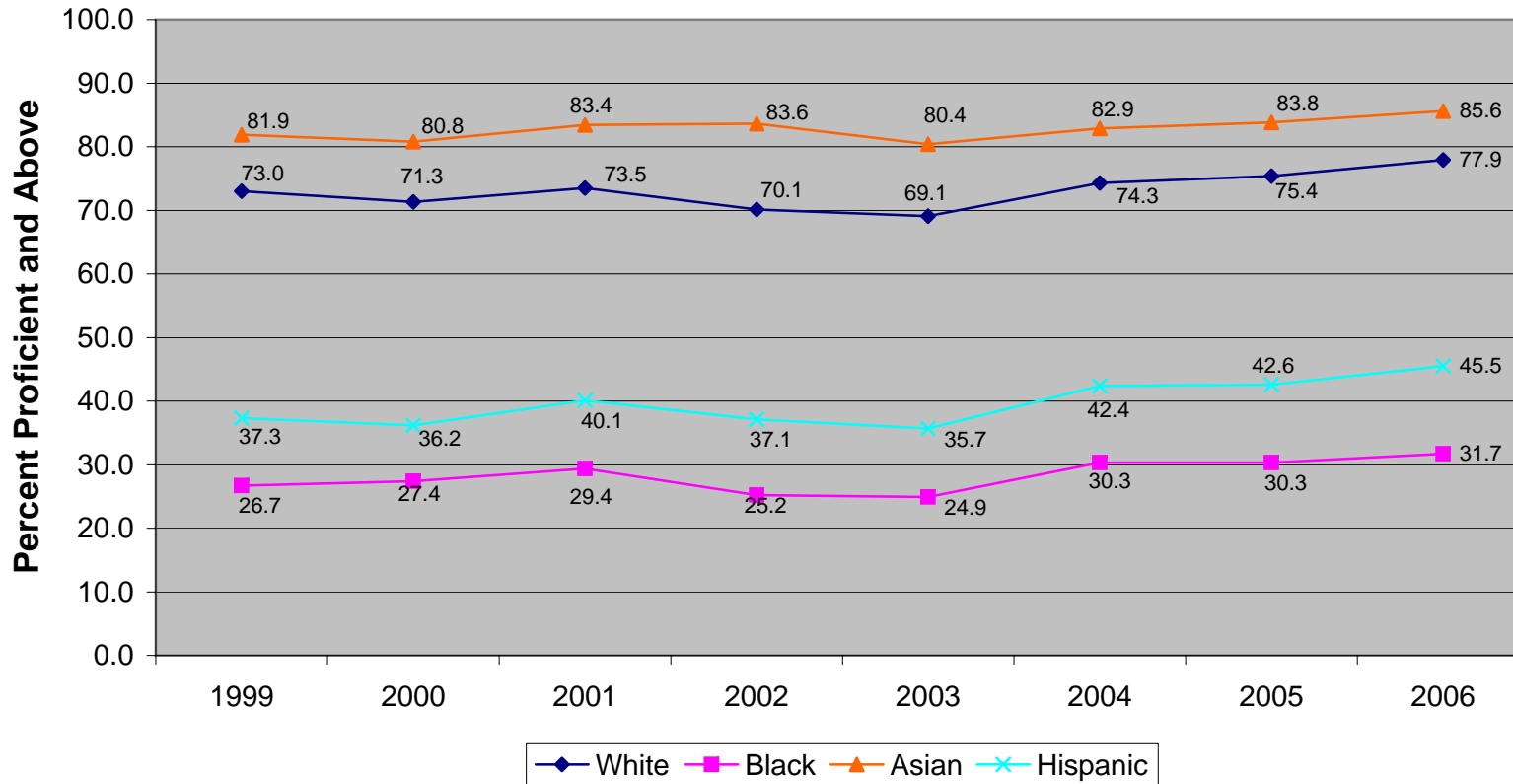


New Jersey Grade Eight Proficiency Assessment Language Arts Literacy Percent Proficient and Above by Ethnicity (1999-2006)¹



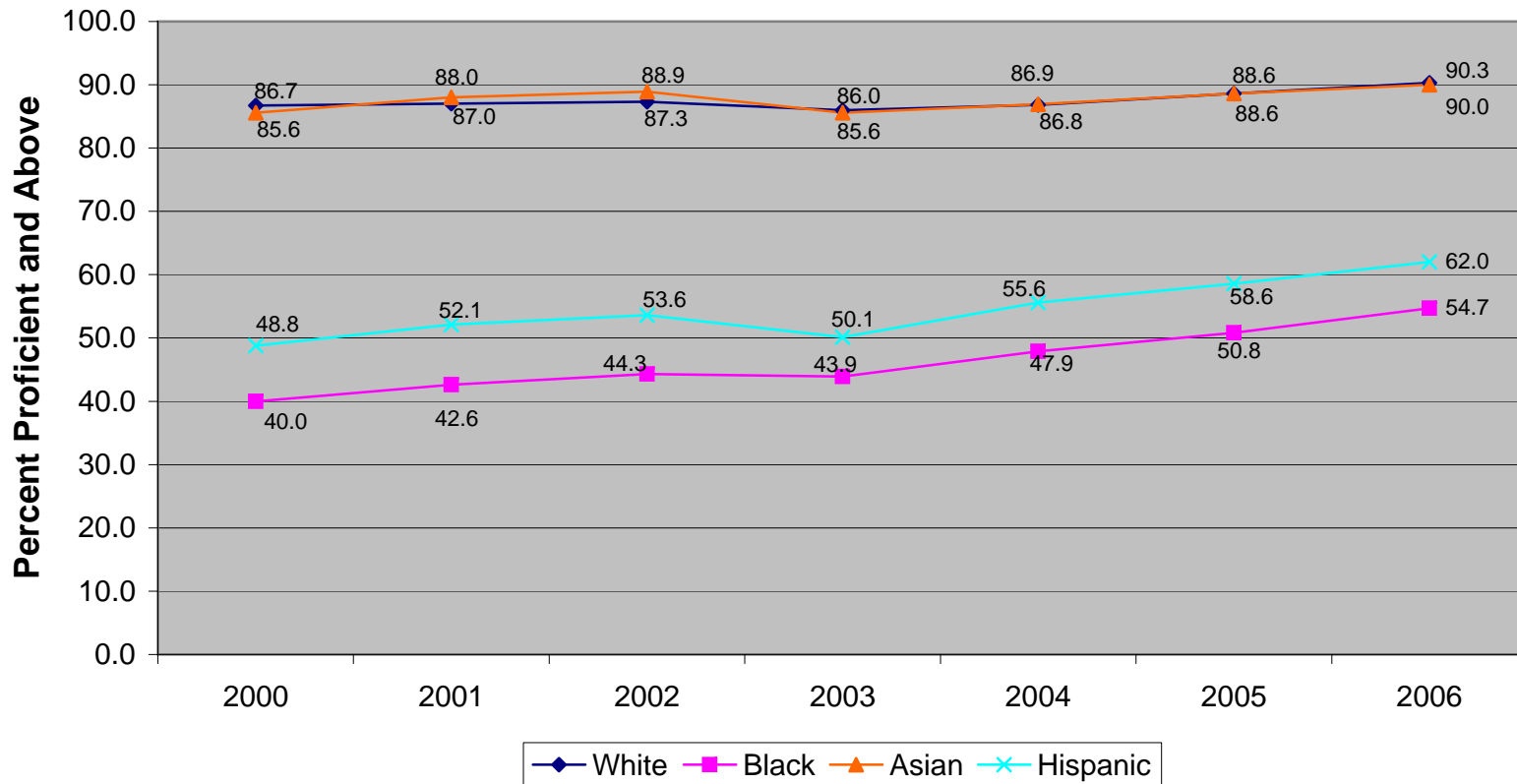
¹In 2005 and 2006, ethnic groups do not include students who identified themselves as multiple ethnicities.

**New Jersey Grade Eight Proficiency Assessment
Mathematics Percent Proficient and Above by Ethnicity (1999-2006)¹**



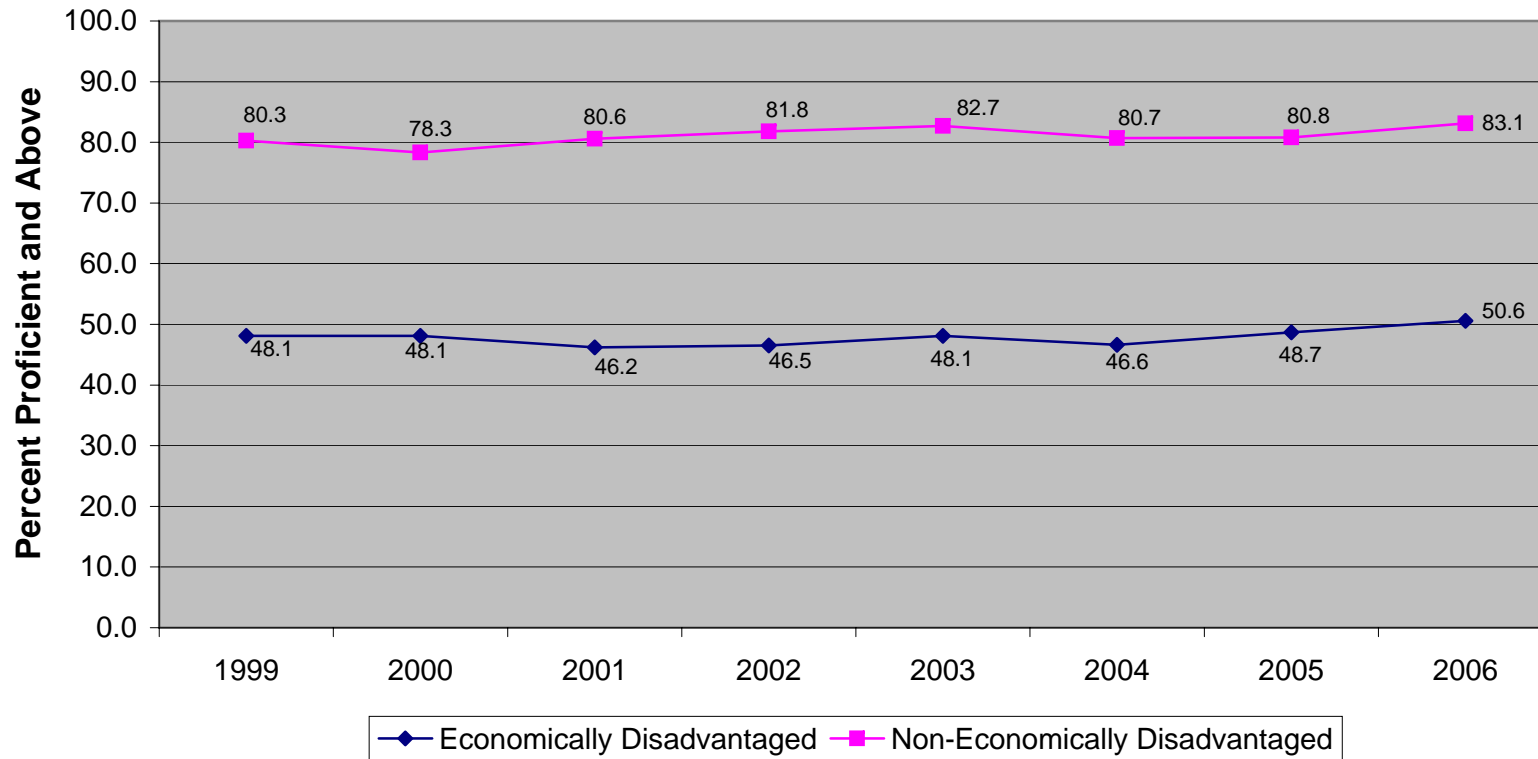
¹In 2005 and 2006, ethnic groups do not include students who identified themselves as multiple ethnicities.

**New Jersey Grade Eight Proficiency Assessment
Science Percent Proficient and Above by Ethnicity (2000-2006)¹**

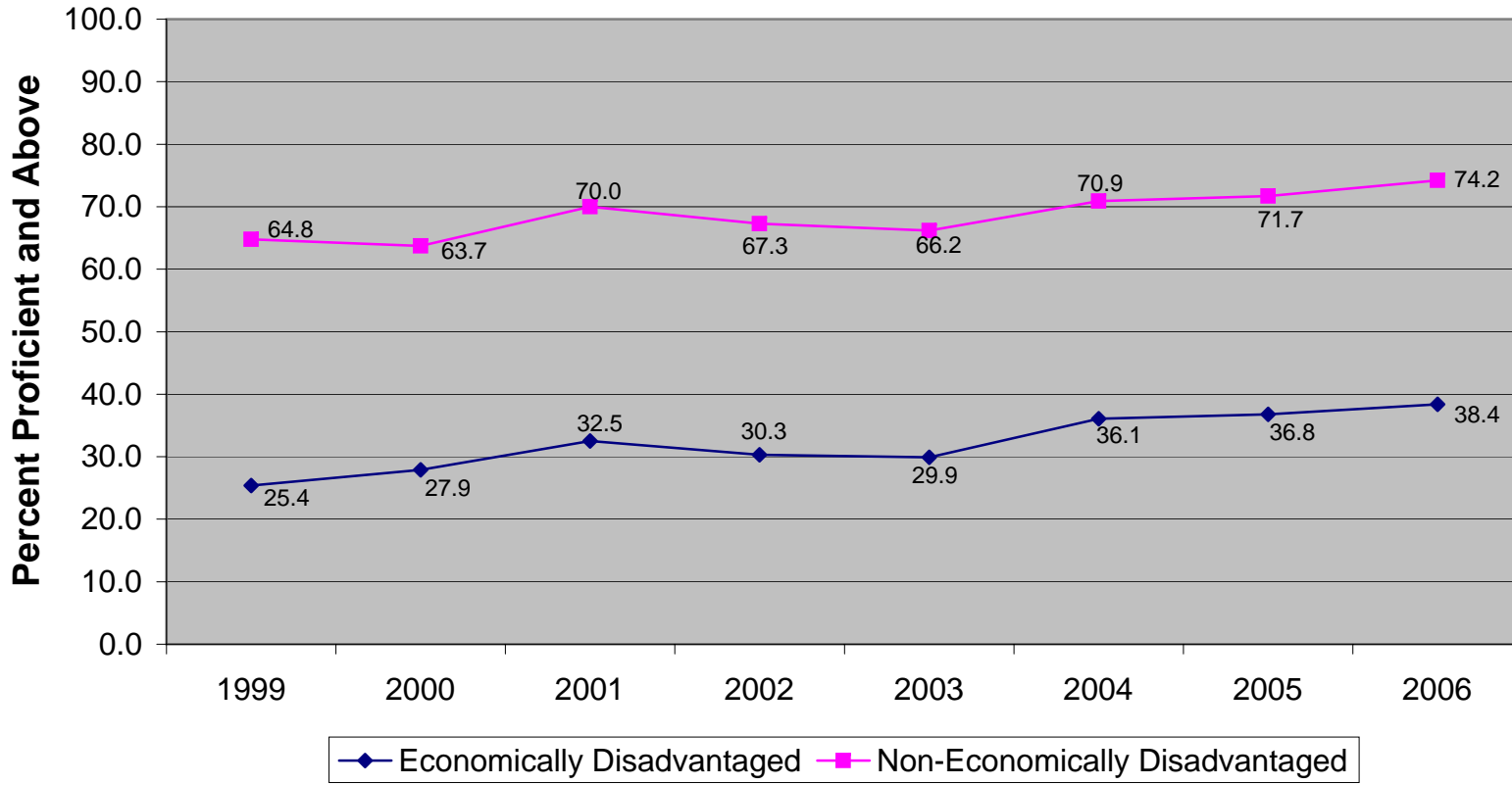


¹In 2005 and 2006, ethnic groups do not include students who identified themselves as multiple ethnicities.

**New Jersey Grade Eight Proficiency Assessment
Language Arts Literacy Percent Proficient and Above by Economic Status (1999-2006)**



**New Jersey Grade Eight Proficiency Assessment
Mathematics Percent Proficient and Above by Economic Status (1999-2006)**



New Jersey Grade Eight Proficiency Assessment Science Percent Proficient and Above by Economics Status (2000-2006)

