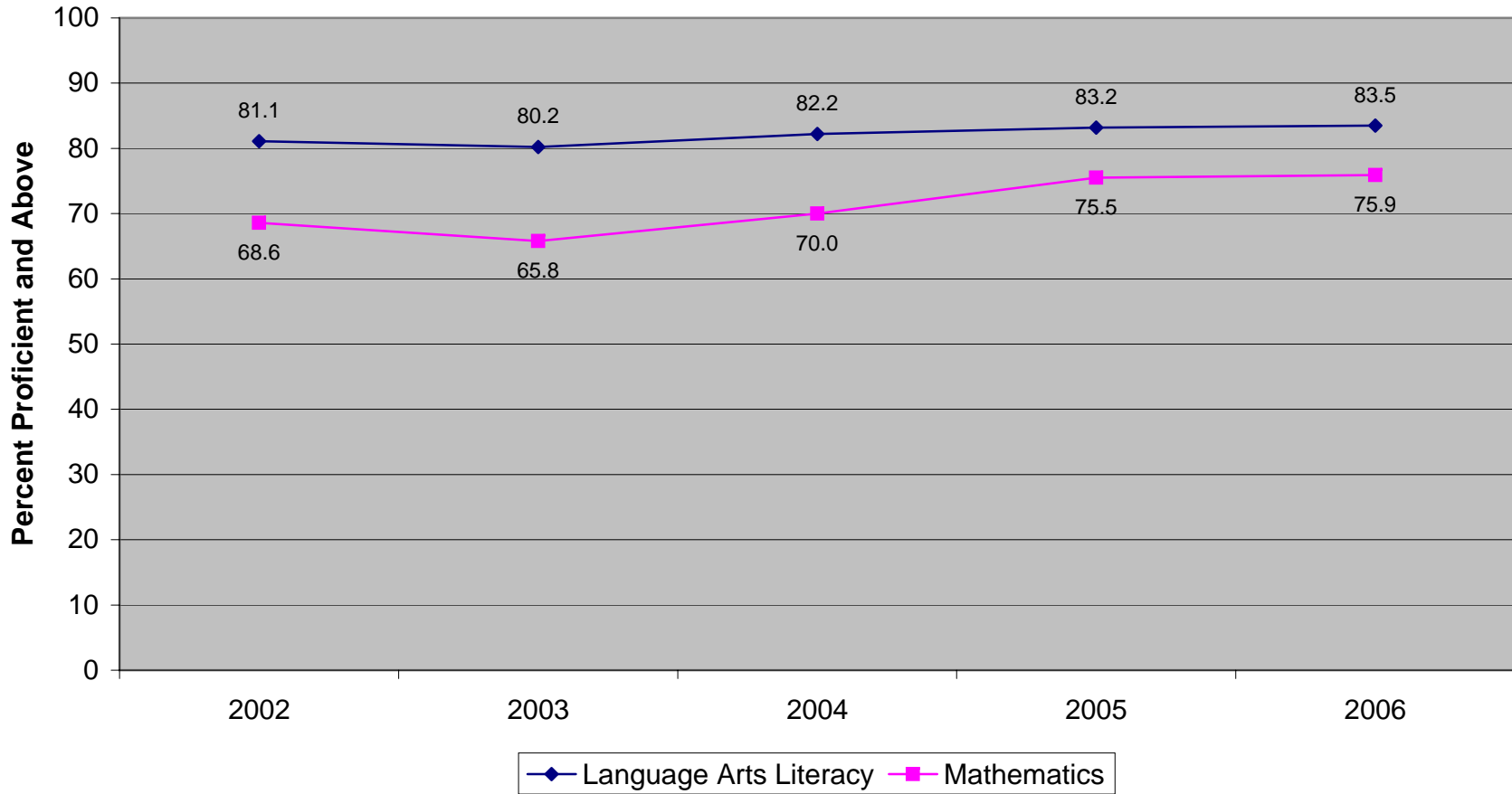
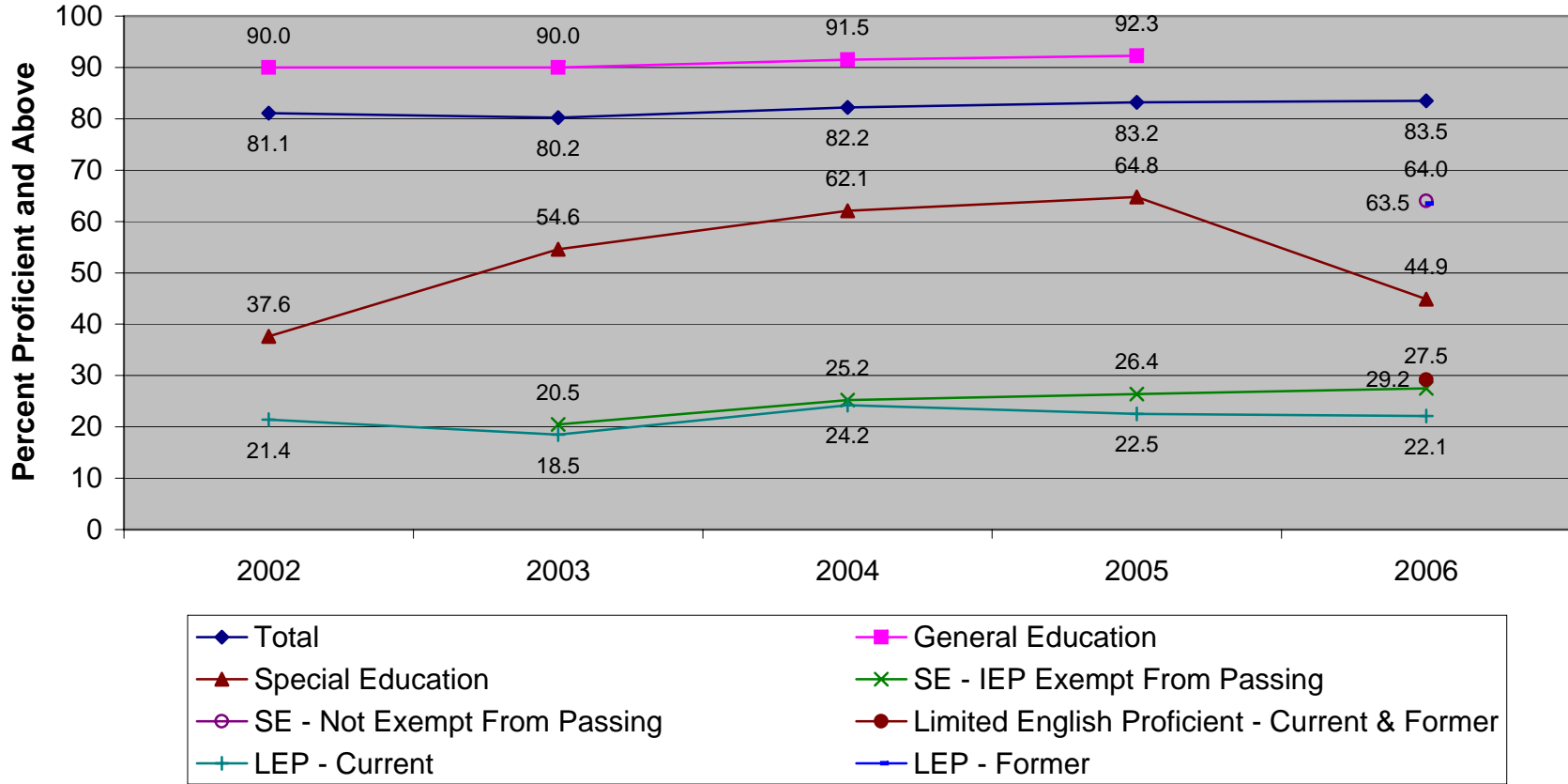


**New Jersey High School Proficiency Assessment  
Percent Proficient and Above by Content Area (2002 - 2006)**

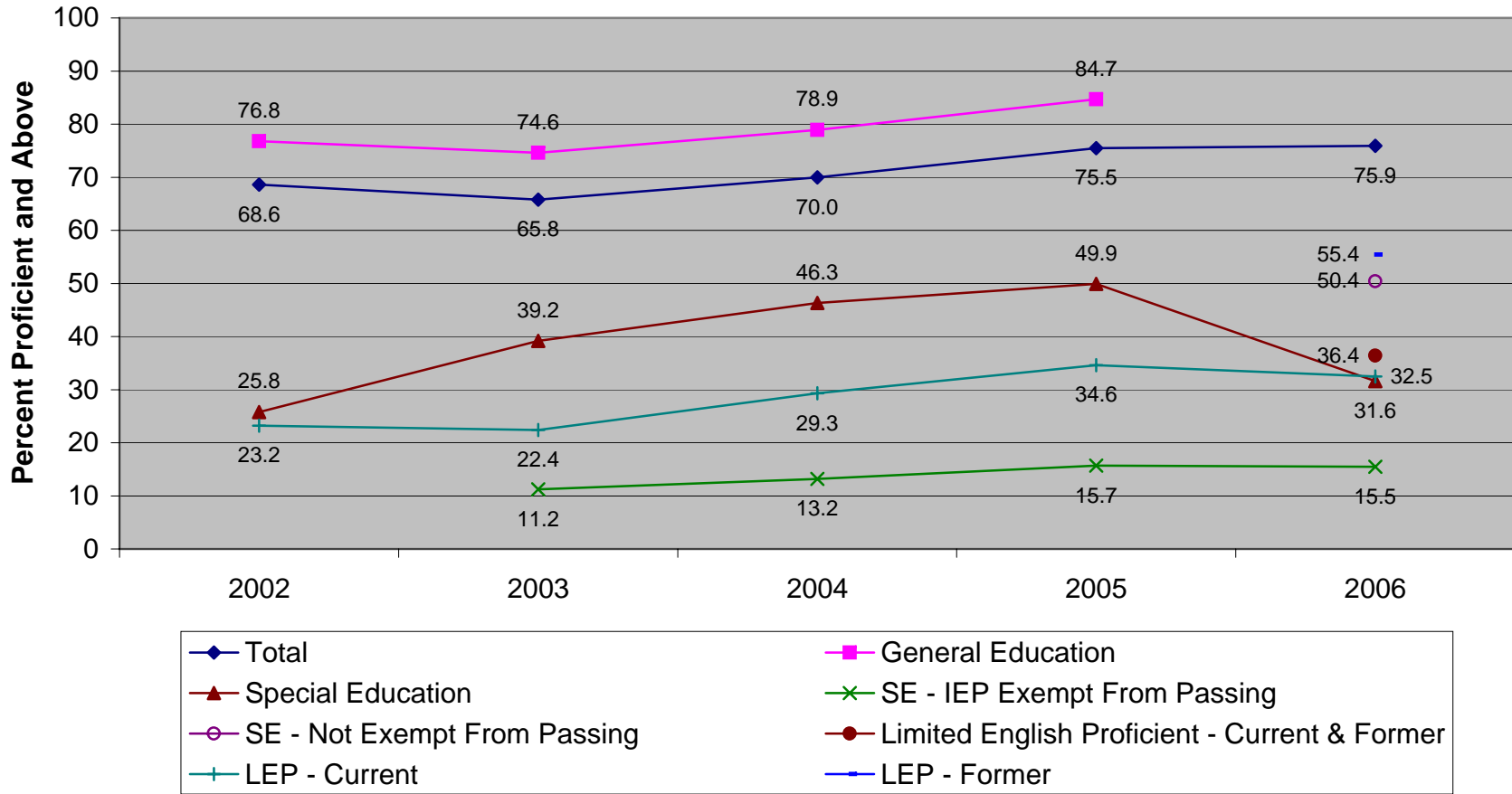


### New Jersey High School Proficiency Assessment Language Arts Literacy Percent Proficient and Above by Testing Population (2002 - 2006)



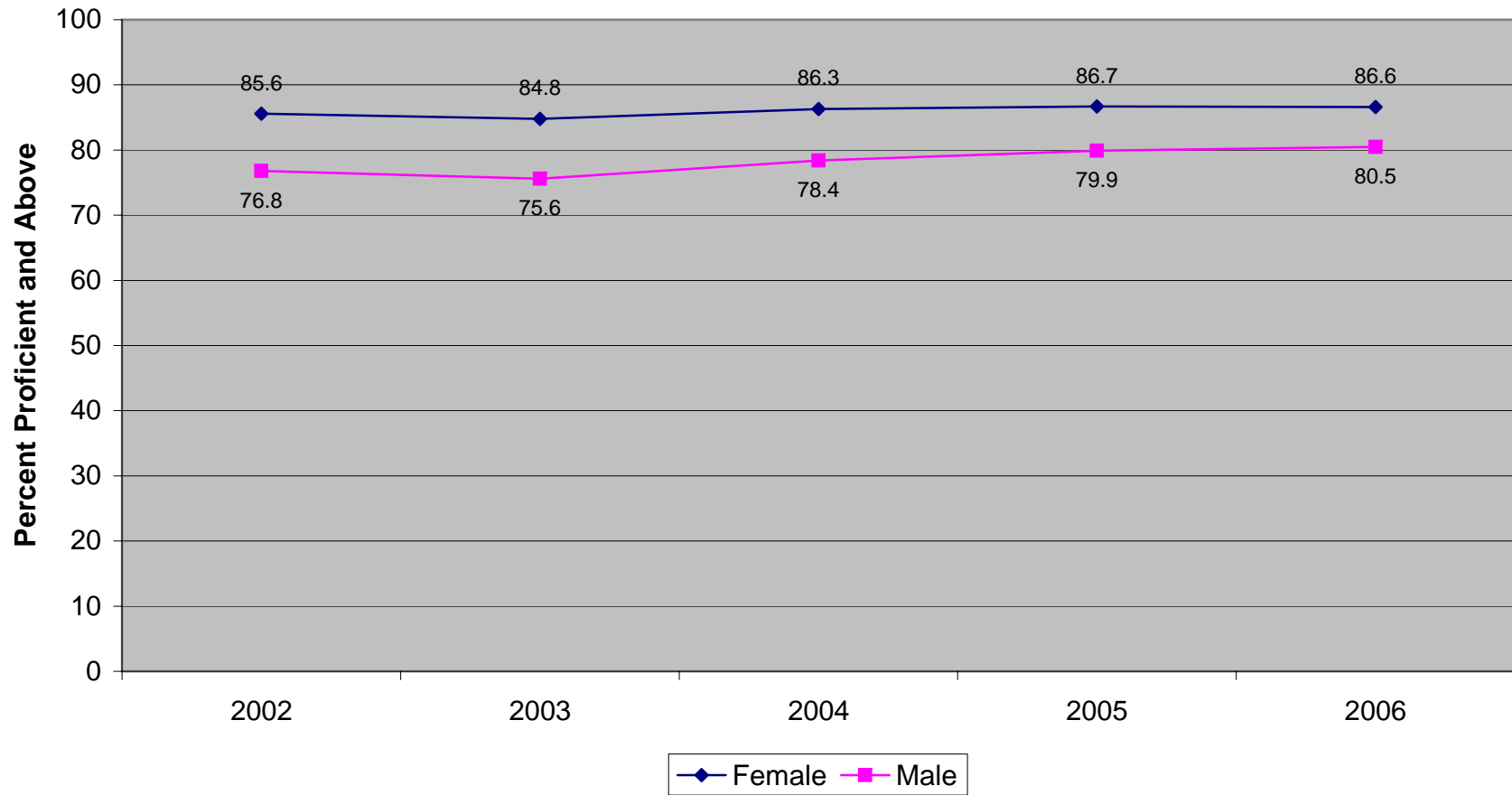
In 2002, the IEP Exempt from Passing category was included in the Special Education category.  
Prior to 2006, the Not Exempt from Passing category was included in the Special Education category.

### New Jersey High School Proficiency Assessment Mathematics Proficient and Above by Testing Population (2002 - 2006)

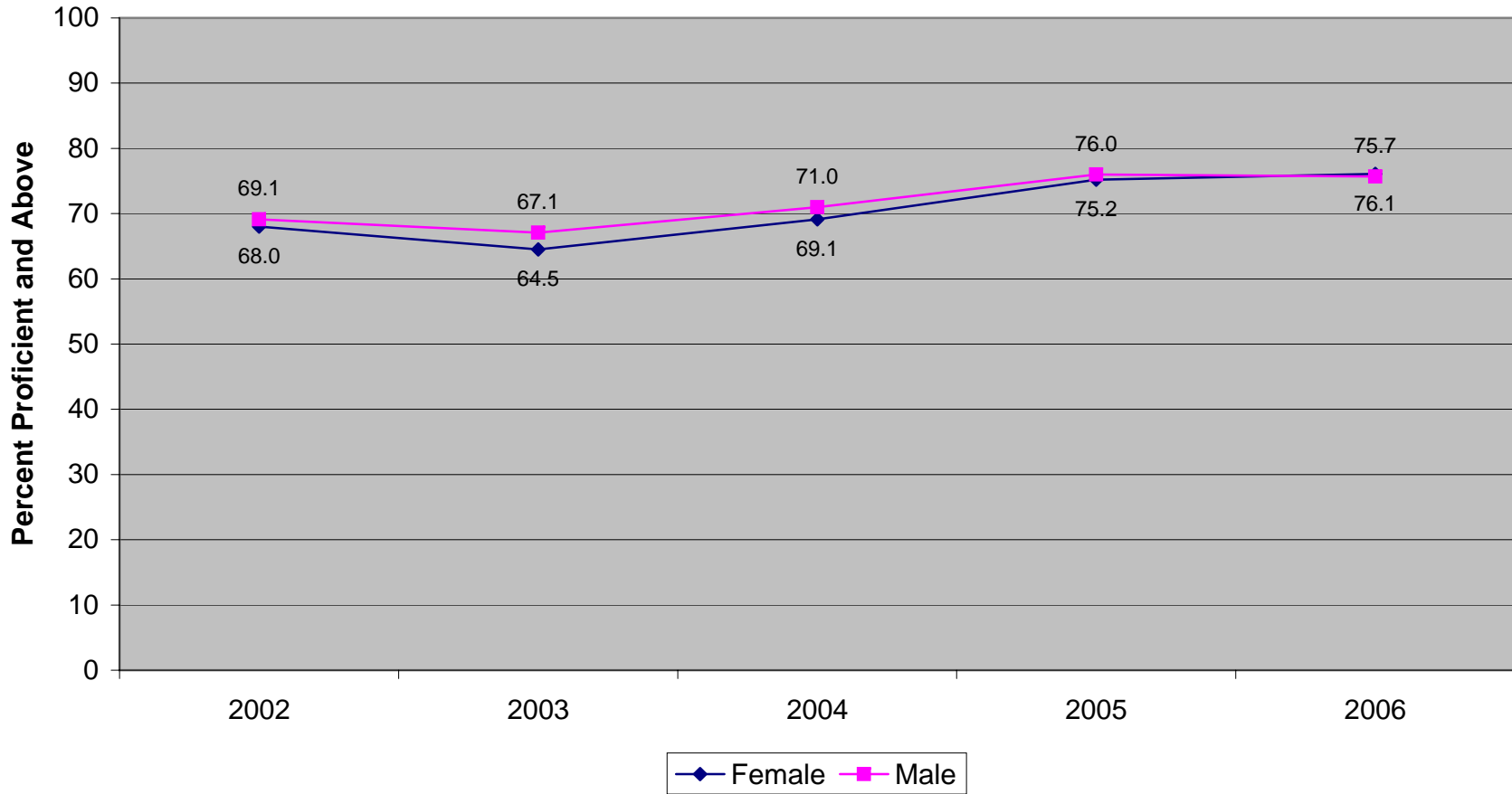


For 2002, the IEP Exempt from Passing category was included in the Special Education Category.  
 Prior to 2006, the Not Exempt from Passing category was included in the Special Education category.

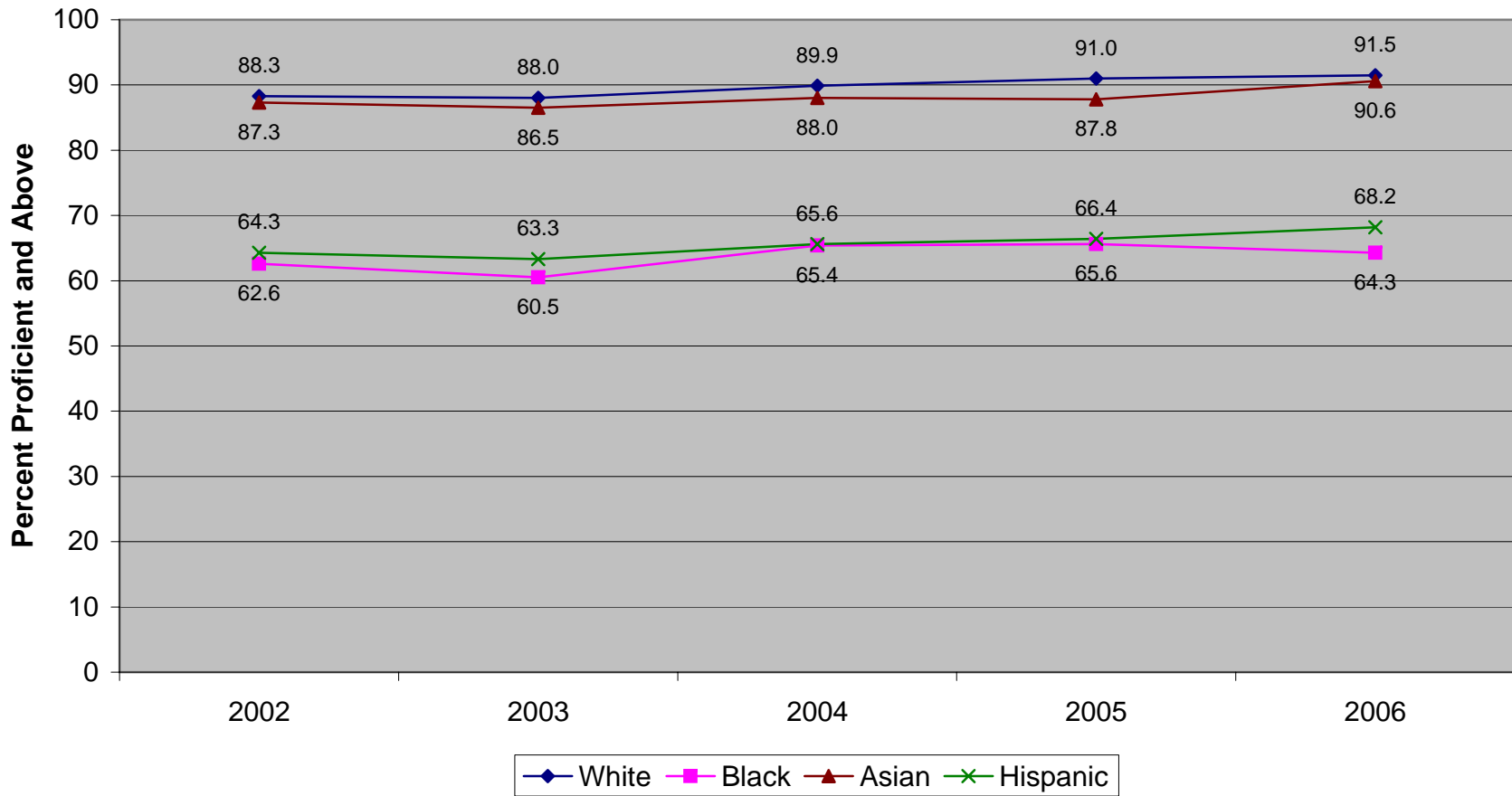
### New Jersey High School Proficiency Assessment Language Arts Literacy Proficient and Above by Gender (2002 - 2006)



**New Jersey High School Proficiency Assessment  
Mathematics Proficient and Above by Gender (2002 - 2006)**

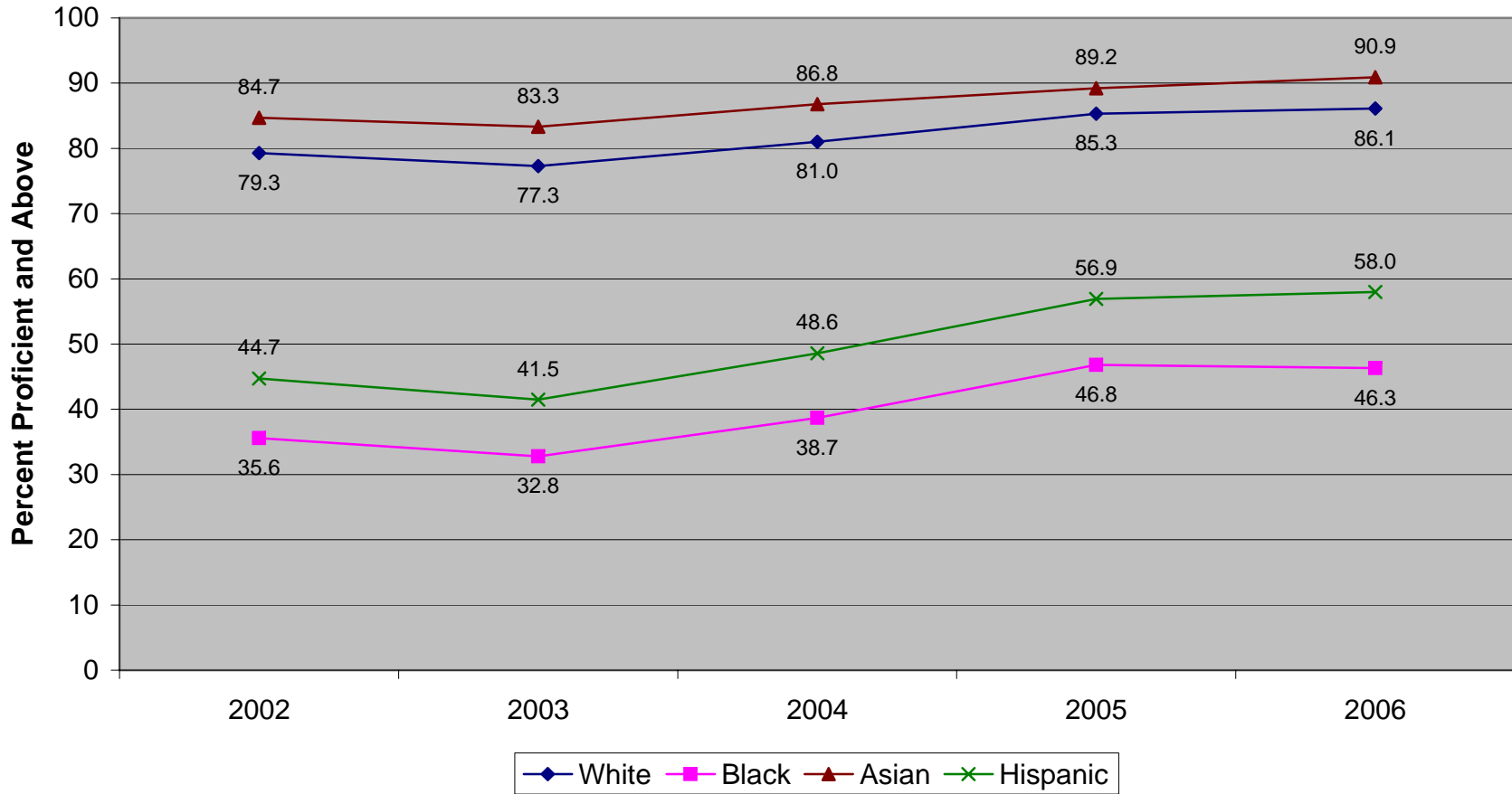


### New Jersey High School Proficiency Assessment Language Arts Literacy Proficient and Above by Ethnicity (2002 - 2006)



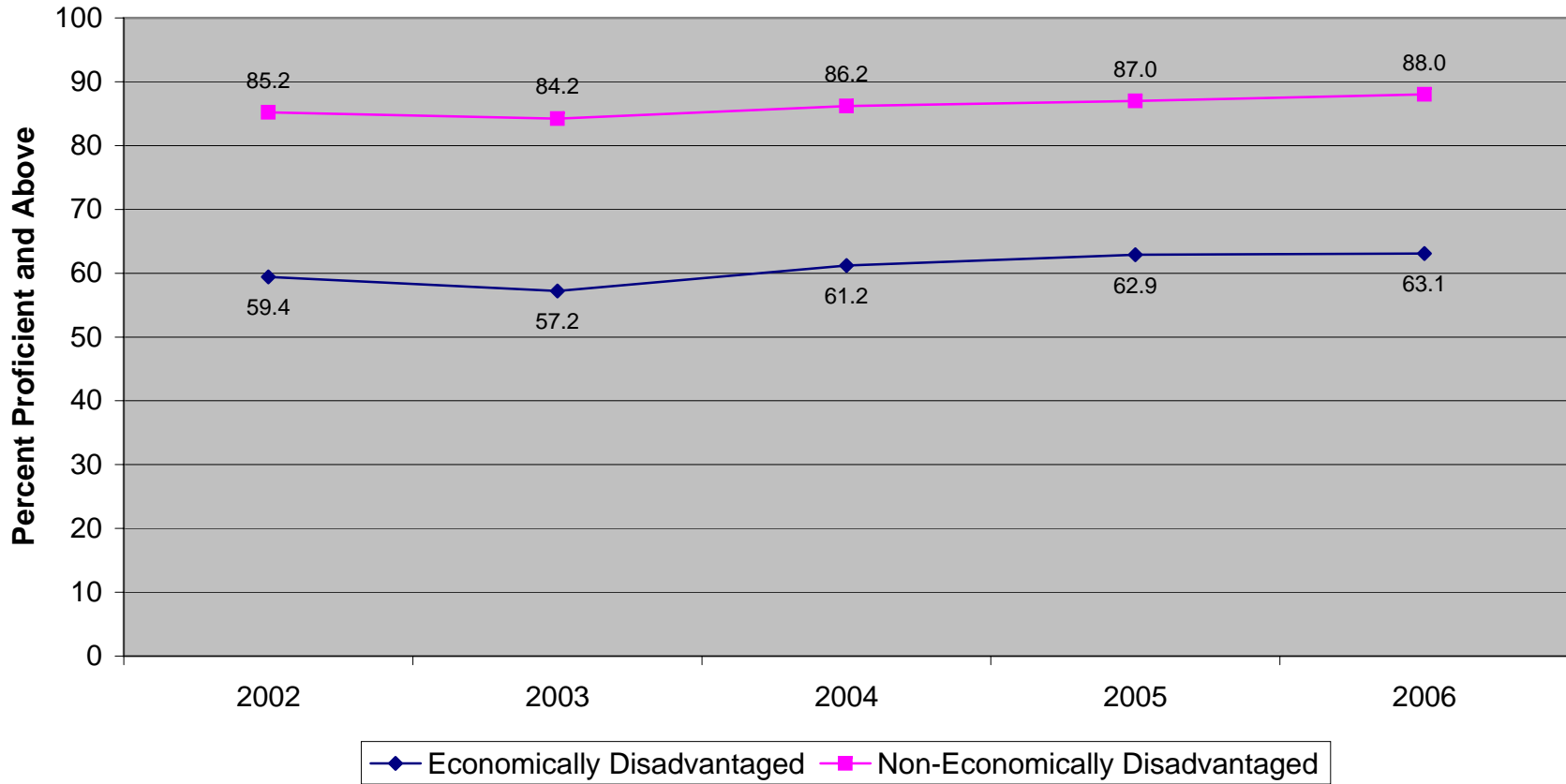
Ethnic codes Pacific Islander, American Indian/Alaskan Native and Other are not shown due to the small number of students in these categories. In 2004 only, students with multiple ethnicities are counted in as many ethnic categories that apply, but are excluded completely in all other years.

### New Jersey High School Proficiency Assessment Mathematics Proficient and Above by Ethnicity (2002 - 2006)



Ethnic codes Pacific Islander, American Indian/Alaskan Native and Other are not shown due to the small number of students in these categories. In 2004 only, students with multiple ethnicities are counted in as many ethnic categories that apply, but are excluded completely in all other years.

**New Jersey High School Proficiency Assessment  
Language Arts Literacy Percent Proficient and Above by Economic Status  
(2002 - 2006)**





**New Jersey High School Proficiency Assessment  
Mathematics Percent Proficient and Above by Economic Status (2002 - 2006)**

