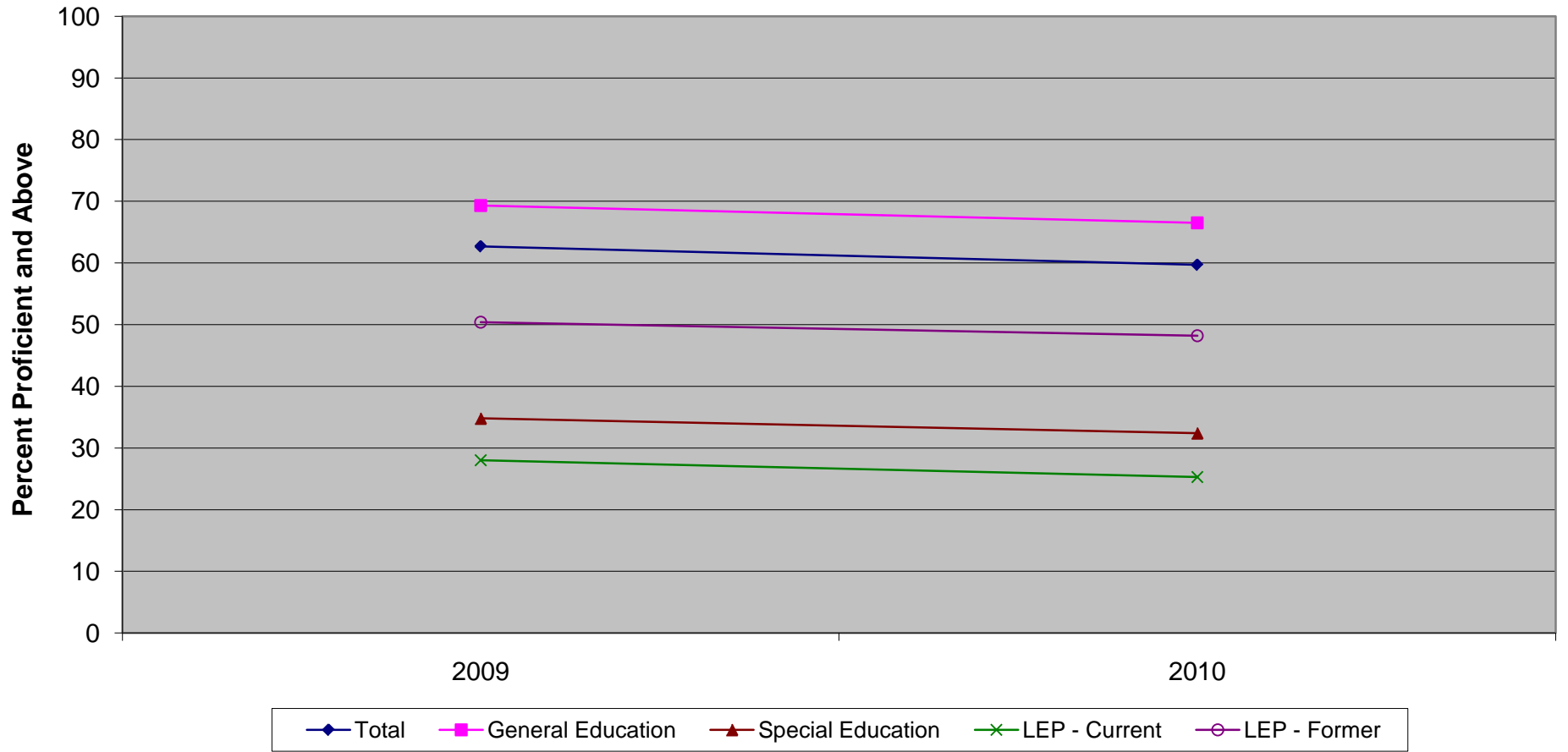


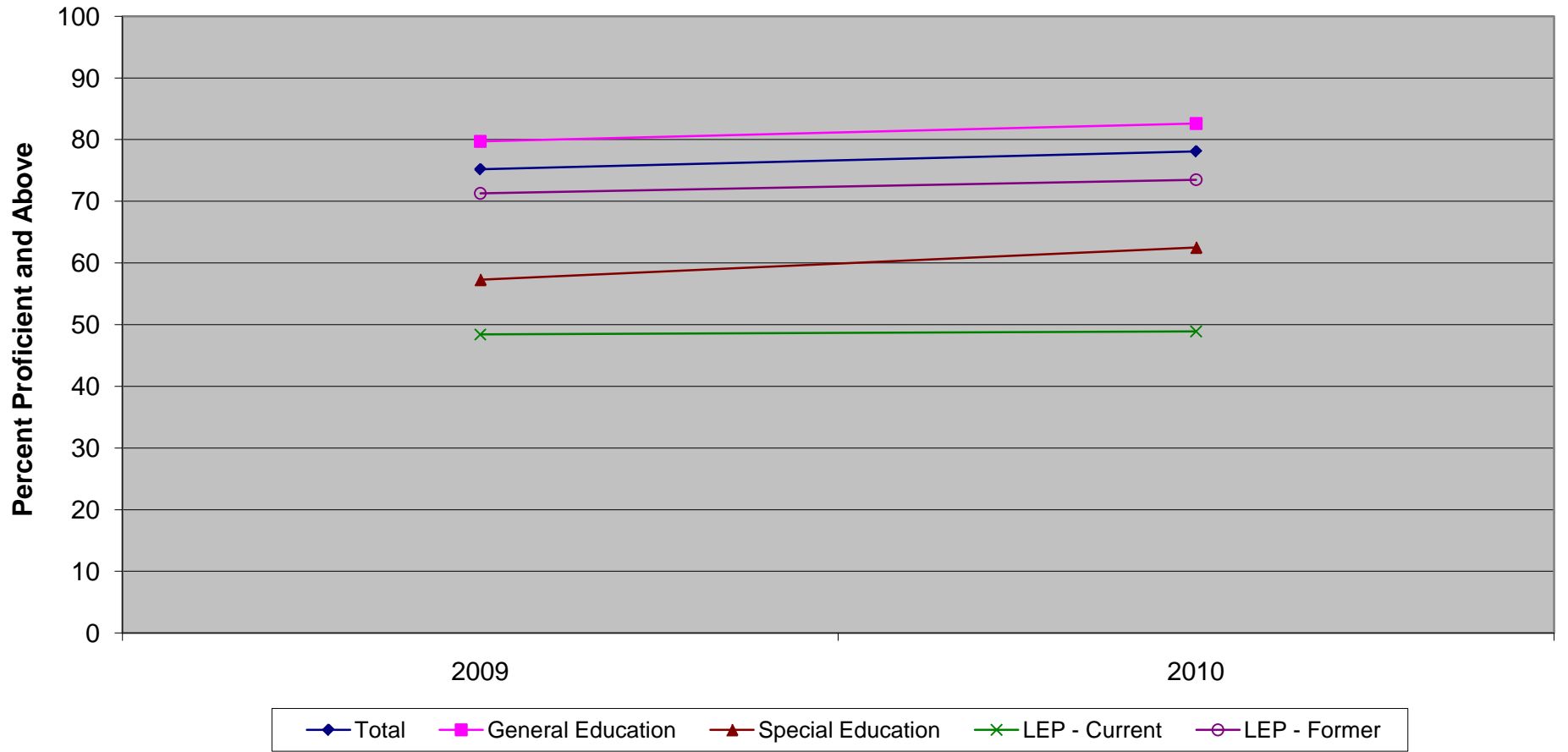
New Jersey Assessment of Skills and Knowledge
Grade 3 Language Arts Literacy Percent Proficient and Above by Instructional Group (2009-2010)



**New Jersey Assessment of Skills and Knowledge
Grade 3 Language Arts Literacy Percent Proficient and Above by Instructional Group (2009-2010)**

	2009	2010
Total	62.7	59.7
General Education	69.3	66.5
Special Education	34.8	32.4
LEP - Current	28.0	25.3
LEP - Former	50.4	48.2

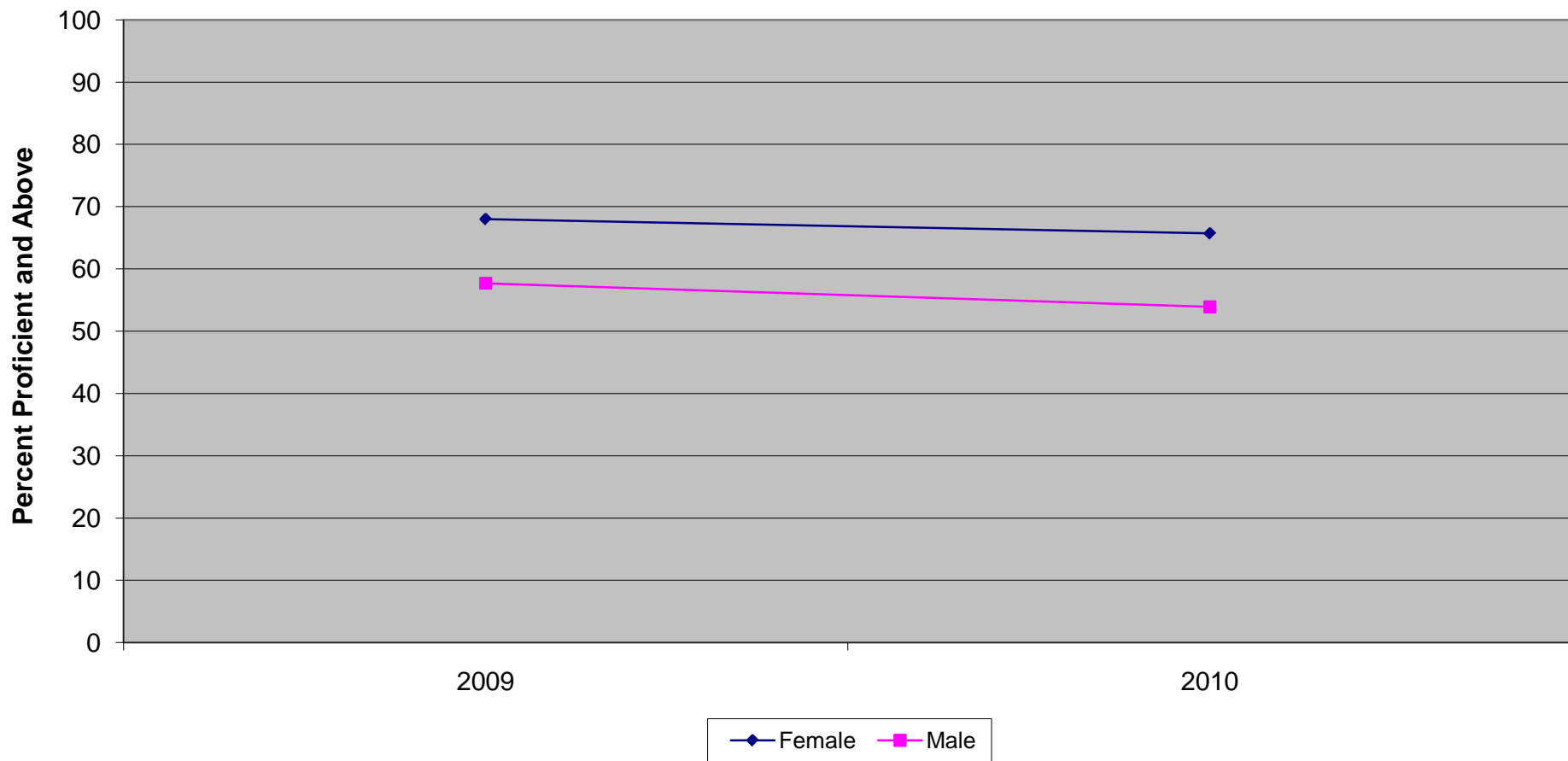
New Jersey Assessment of Skills and Knowledge
Grade 3 Mathematics Proficient and Above by Instructional Group (2009-2010)



**New Jersey Assessment of Skills and Knowledge
Grade 3 Mathematics Proficient and Above by Instructional Group (2009-2010)**

	2009	2010
Total	75.2	78.1
General Education	79.7	82.6
Special Education	57.3	62.5
LEP - Current	48.4	48.9
LEP - Former	71.3	73.5

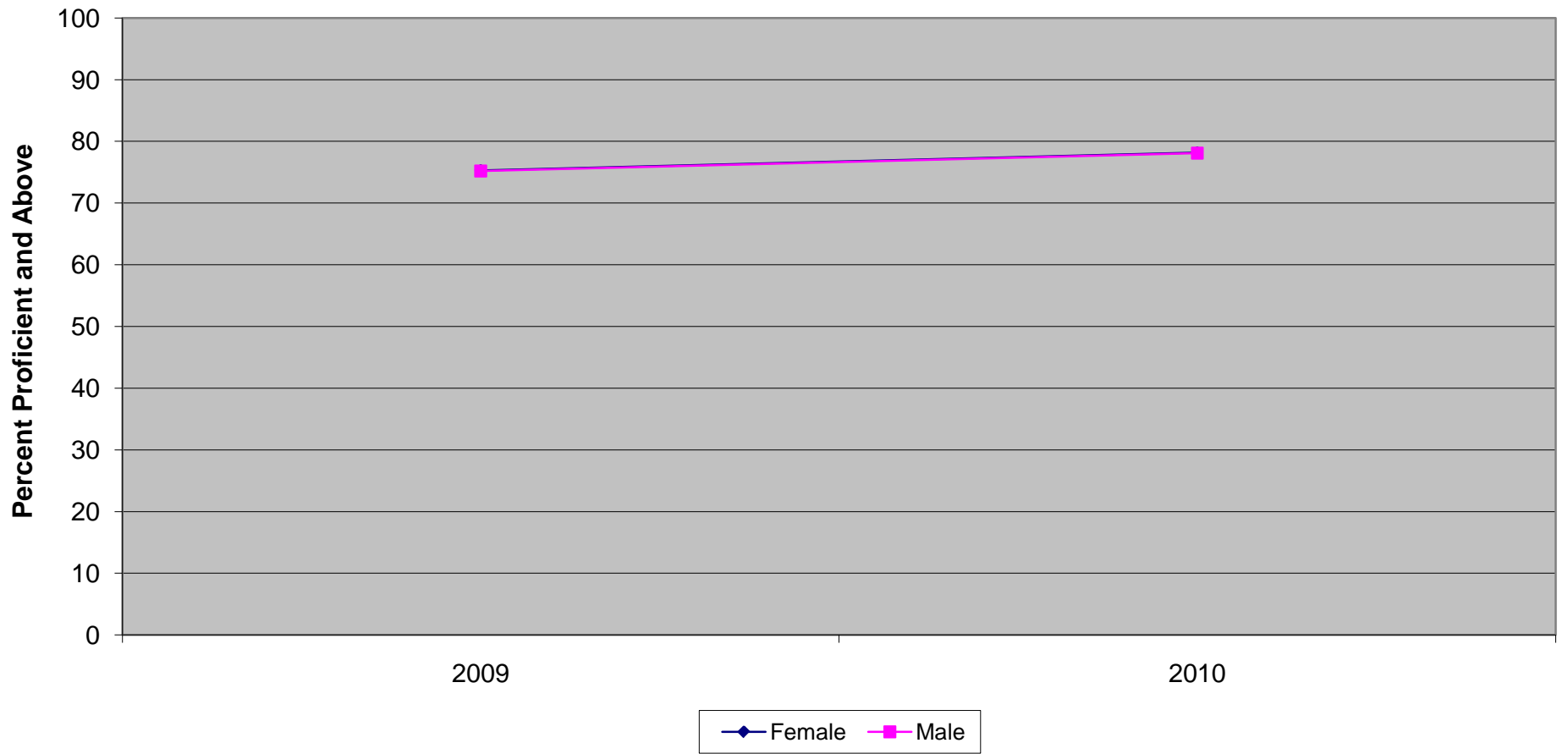
New Jersey Assessment of Skills and Knowledge
Grade 3 Language Arts Literacy Proficient and Above by Gender (2009-2010)



**New Jersey Assessment of Skills and Knowledge
Grade 3 Language Arts Literacy Proficient and Above by Gender (2009-2010)**

	2009	2010
Female	68.0	65.7
Male	57.7	53.9

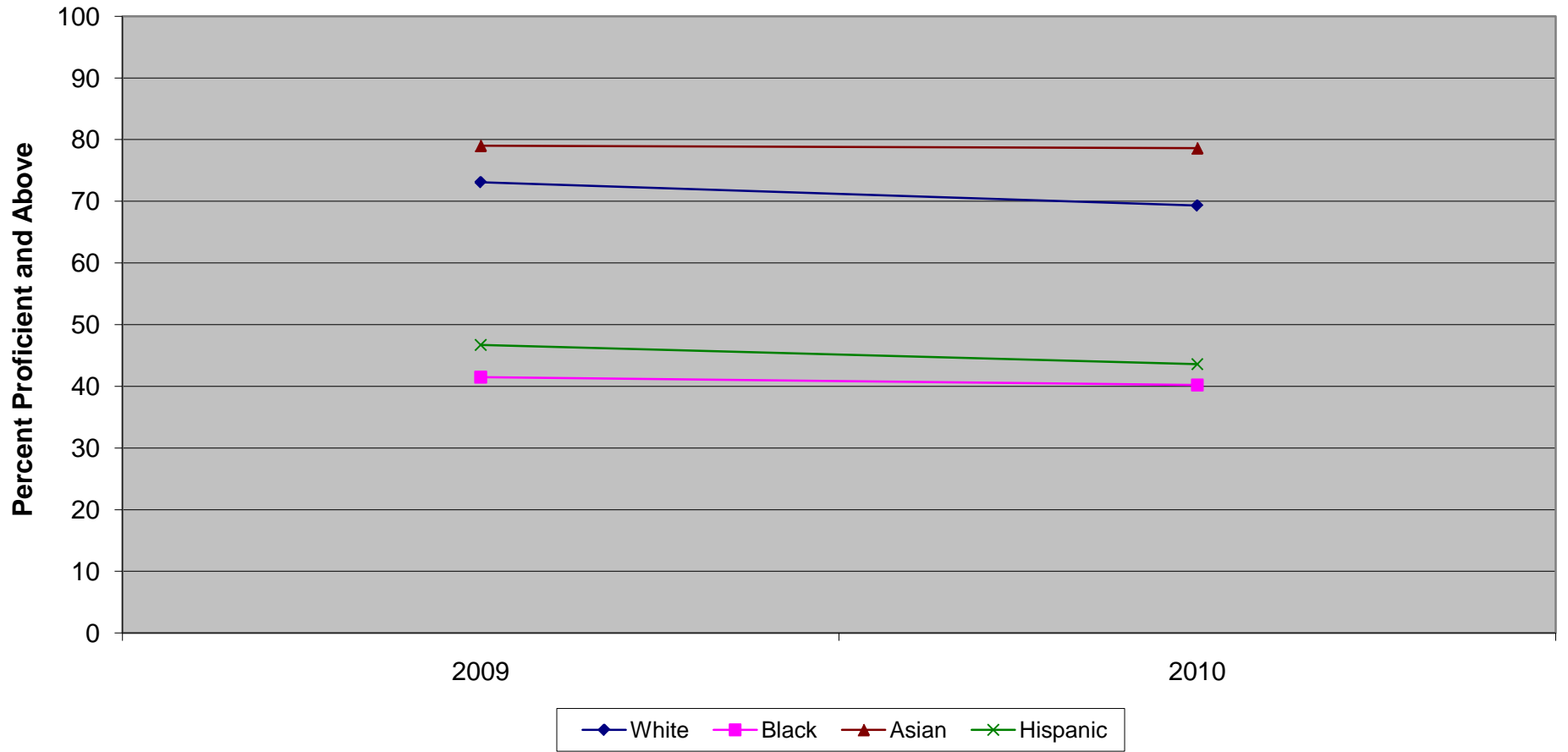
New Jersey Assessment of Skills and Knowledge
Grade 3 Mathematics Proficient and Above by Gender (2009-2010)



**New Jersey Assessment of Skills and Knowledge
Grade 3 Mathematics Proficient and Above by Gender (2009-2010)**

	2009	2010
Female	75.3	78.2
Male	75.2	78.1

New Jersey Assessment of Skills and Knowledge
Grade 3 Language Arts Literacy Proficient and Above by Ethnicity (2009-2010)

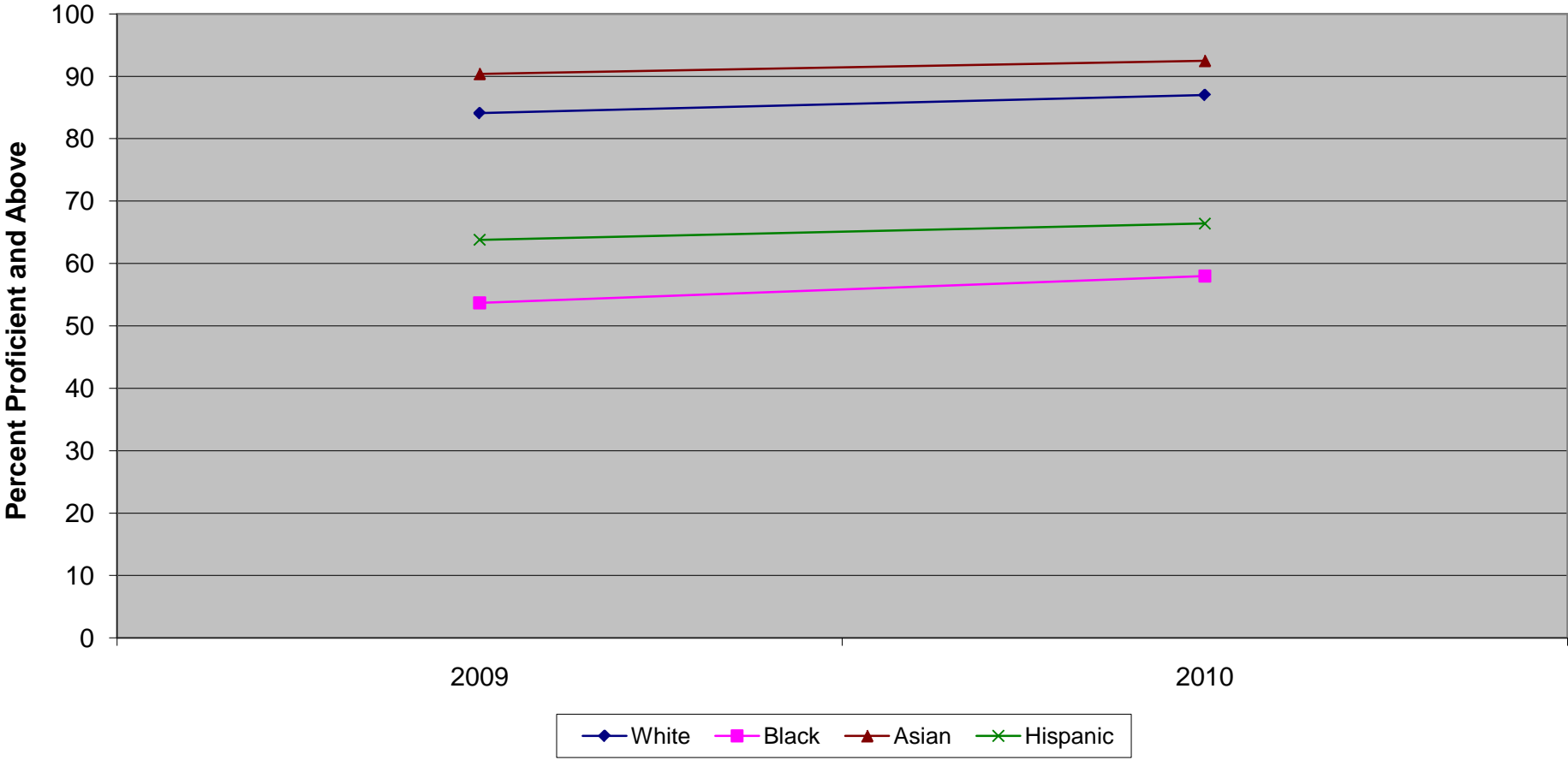


Ethnic codes Pacific Islander, American Indian/Alaskan Native and Other are not shown due to the small number of students in these categories.

**New Jersey Assessment of Skills and Knowledge
Grade 3 Language Arts Literacy Proficient and Above by Ethnicity (2009-2010)**

	2009	2010
White	73.1	69.3
Black	41.5	40.2
Asian	79.0	78.6
Hispanic	46.7	43.6

New Jersey Assessment of Skills and Knowledge
Grade 3 Mathematics Proficient and Above by Ethnicity (2009-2010)



Ethnic codes Pacific Islander, American Indian/Alaskan Native and Other are not shown due to the small number of students in these categories.

**New Jersey Assessment of Skills and Knowledge
Grade 3 Mathematics Proficient and Above by Ethnicity (2009-2010)**

	2009	2010
White	84.1	87.0
Black	53.7	58.0
Asian	90.4	92.5
Hispanic	63.8	66.4