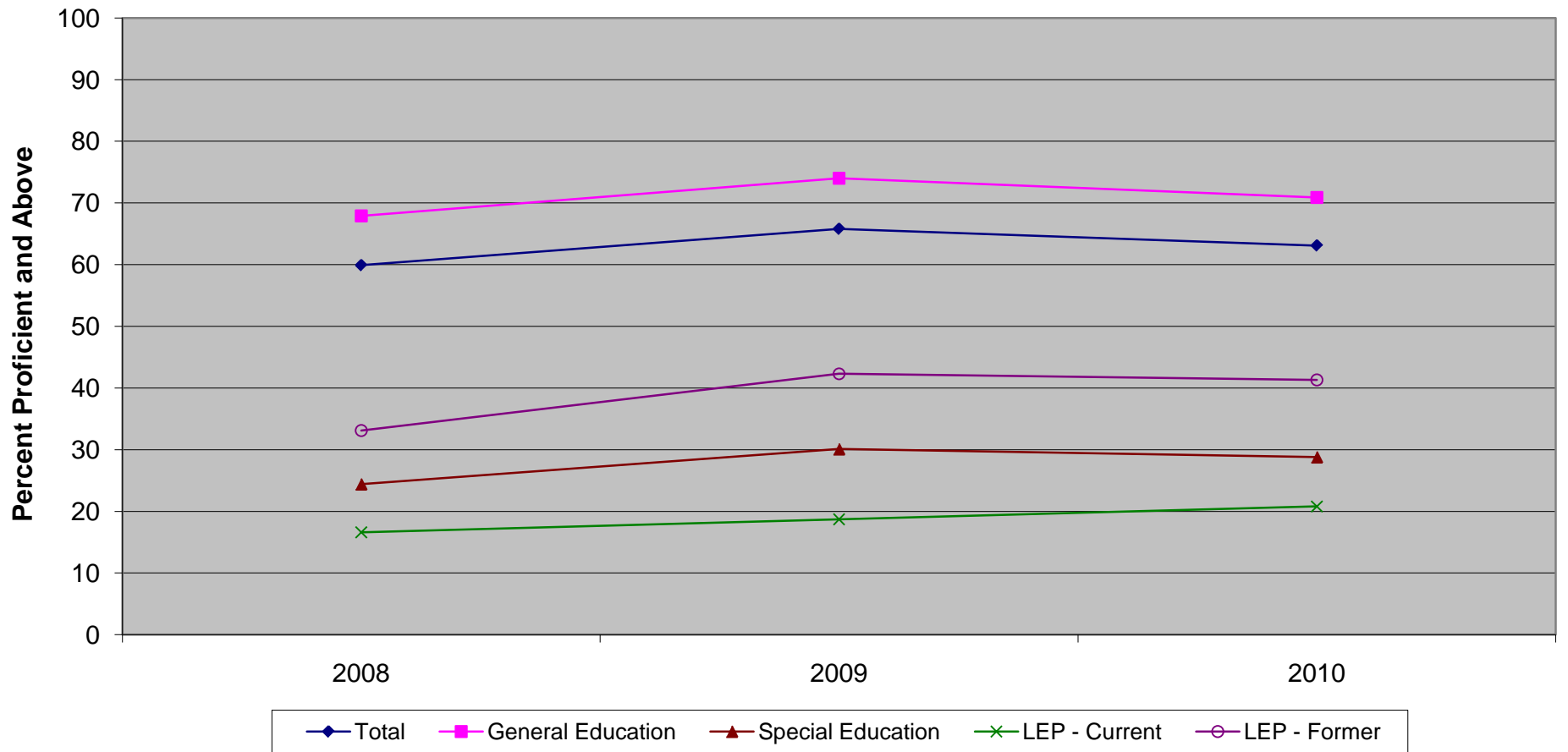


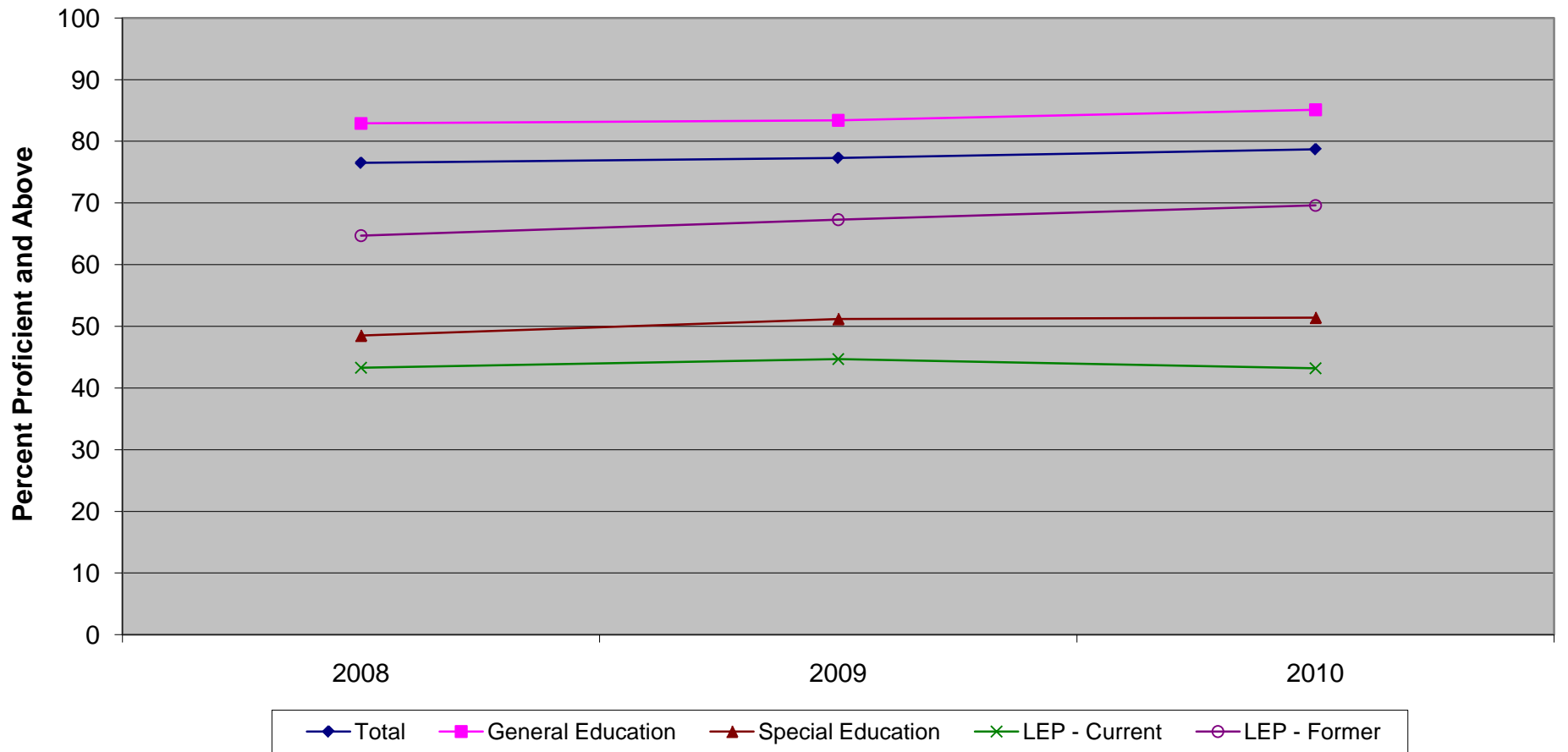
**New Jersey Assessment of Skills and Knowledge
Grade 5 Language Arts Literacy Percent Proficient and Above by Instructional Group (2008 - 2010)**



**New Jersey Assessment of Skills and Knowledge
Grade 5 Language Arts Literacy Percent Proficient and Above by Instructional Group (2008 - 2010)**

	2008	2009	2010
Total	59.9	65.8	63.1
General Education	67.9	74.0	70.9
Special Education	24.4	30.1	28.8
LEP - Current	16.6	18.7	20.8
LEP - Former	33.1	42.3	41.3

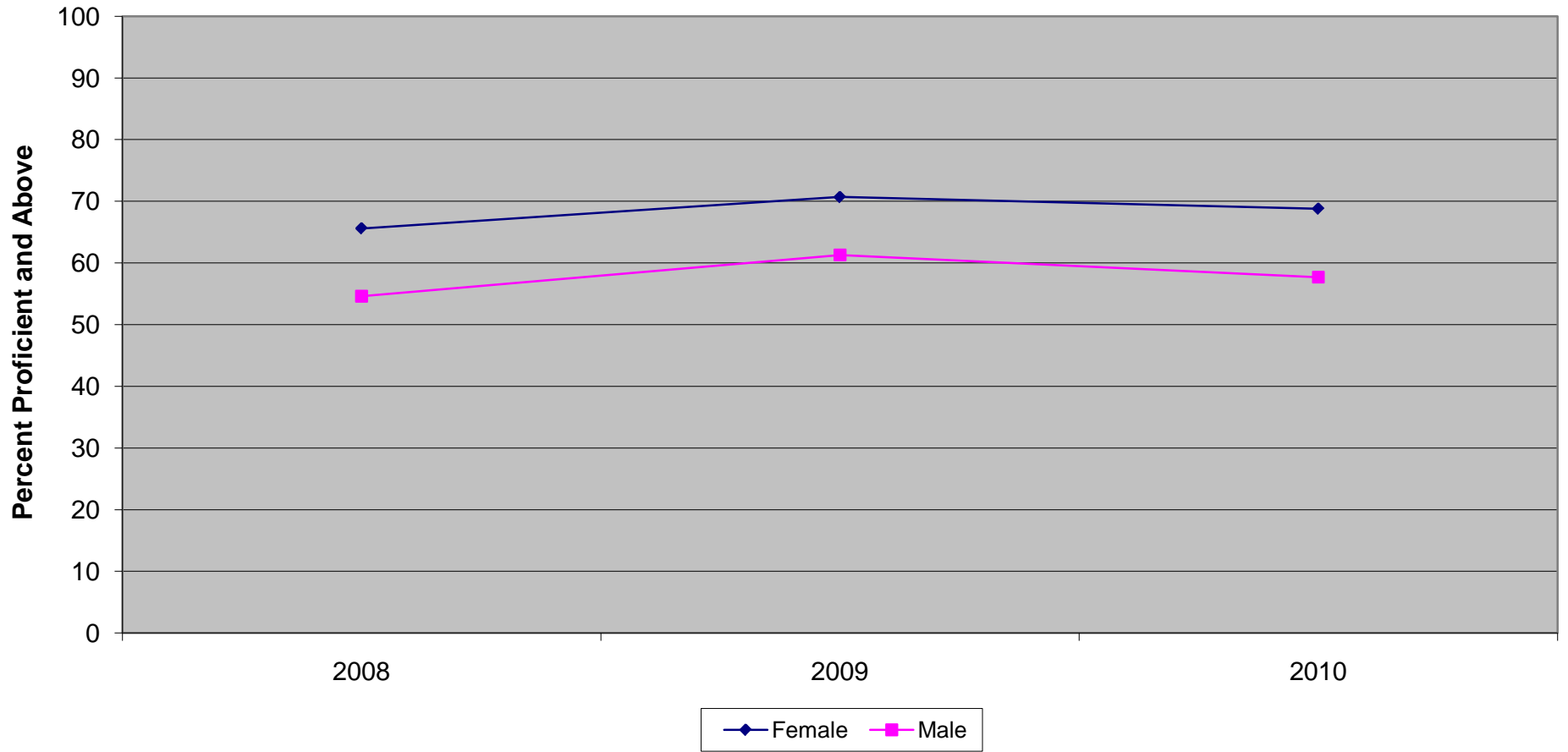
**New Jersey Assessment of Skills and Knowledge
Grade 5 Mathematics Proficient and Above by Instructional Group (2008 - 2010)**



**New Jersey Assessment of Skills and Knowledge
Grade 5 Mathematics Proficient and Above by Instructional Group (2008 - 2010)**

	2008	2009	2010
Total	76.5	77.3	78.7
General Education	82.9	83.4	85.1
Special Education	48.5	51.2	51.4
LEP - Current	43.3	44.7	43.2
LEP - Former	64.7	67.3	69.6

**New Jersey Assessment of Skills and Knowledge
Grade 5 Language Arts Literacy Proficient and Above by Gender (2008 - 2010)**

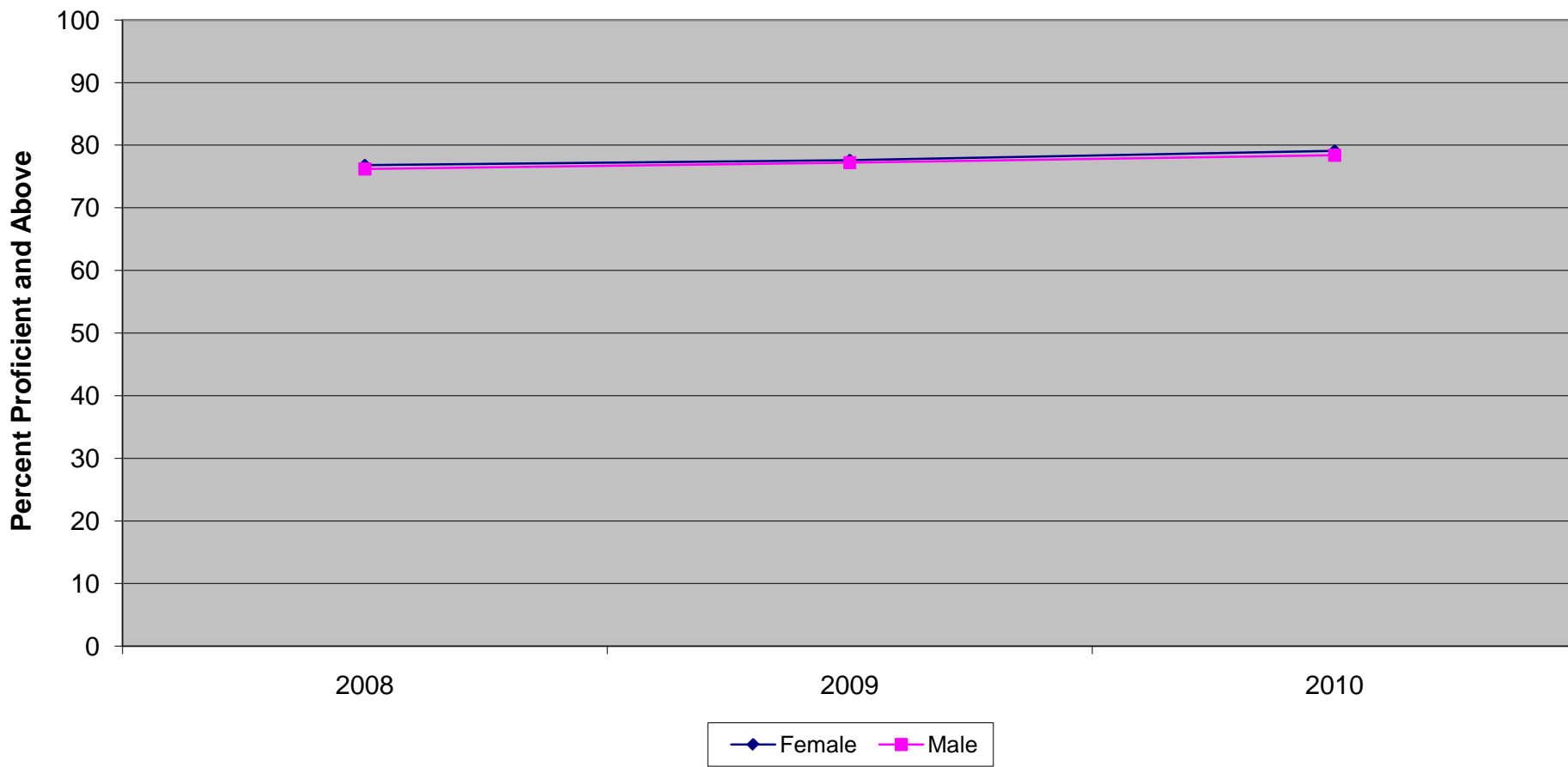


New Jersey Assessment of Skills and Knowledge

Grade 5 Language Arts Literacy Proficient and Above by Gender (2008 - 2010)

	2008	2009	2010
Female	65.6	70.7	68.8
Male	54.6	61.3	57.7

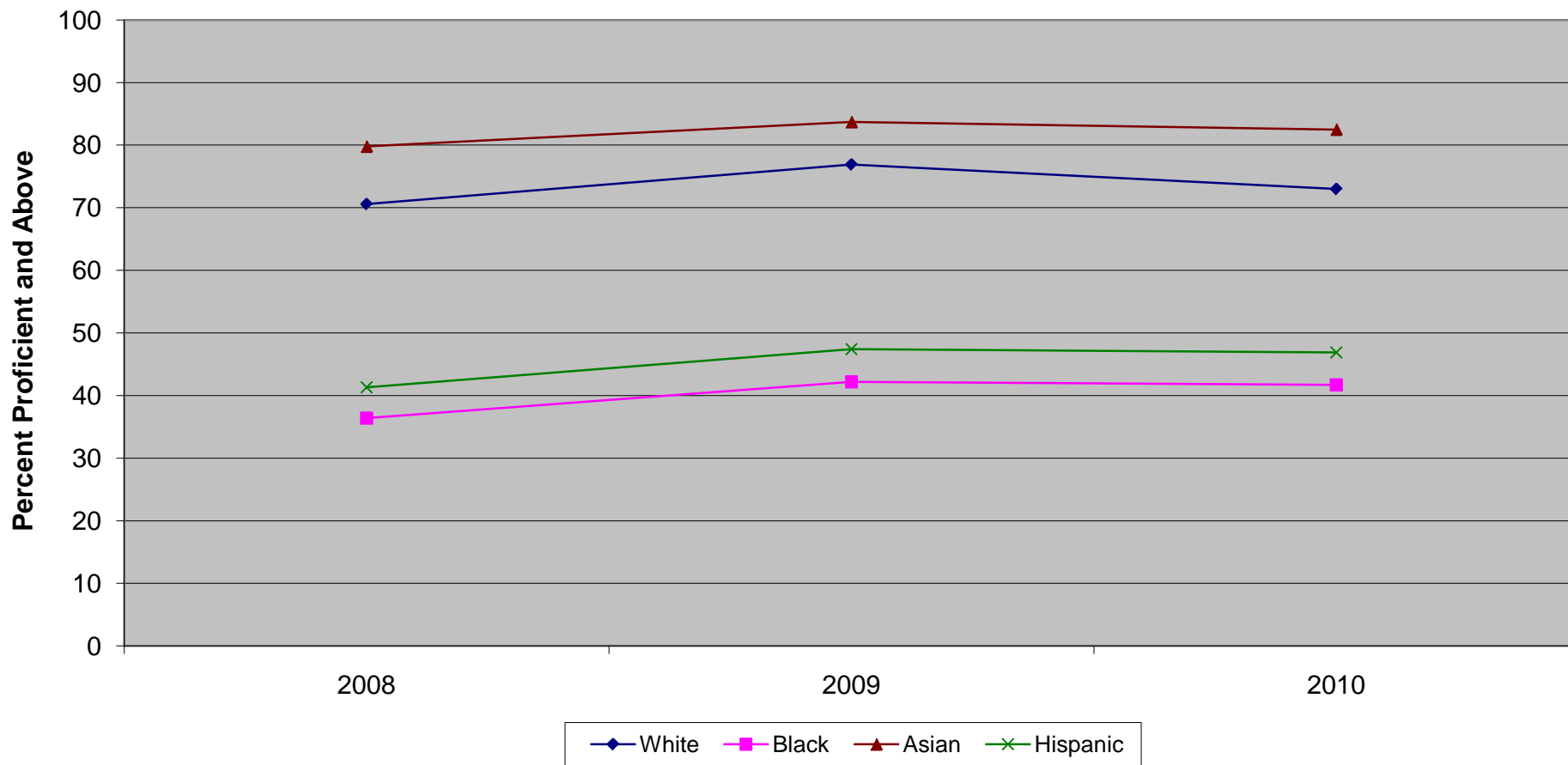
**New Jersey Assessment of Skills and Knowledge
Grade 5 Mathematics Proficient and Above by Gender (2008 - 2010)**



**New Jersey Assessment of Skills and Knowledge
Grade 5 Mathematics Proficient and Above by Gender (2008 - 2010)**

	2008	2009	2010
Female	76.8	77.6	79.1
Male	76.2	77.2	78.4

New Jersey Assessment of Skills and Knowledge
Grade 5 Language Arts Literacy Proficient and Above by Ethnicity (2008 - 2010)



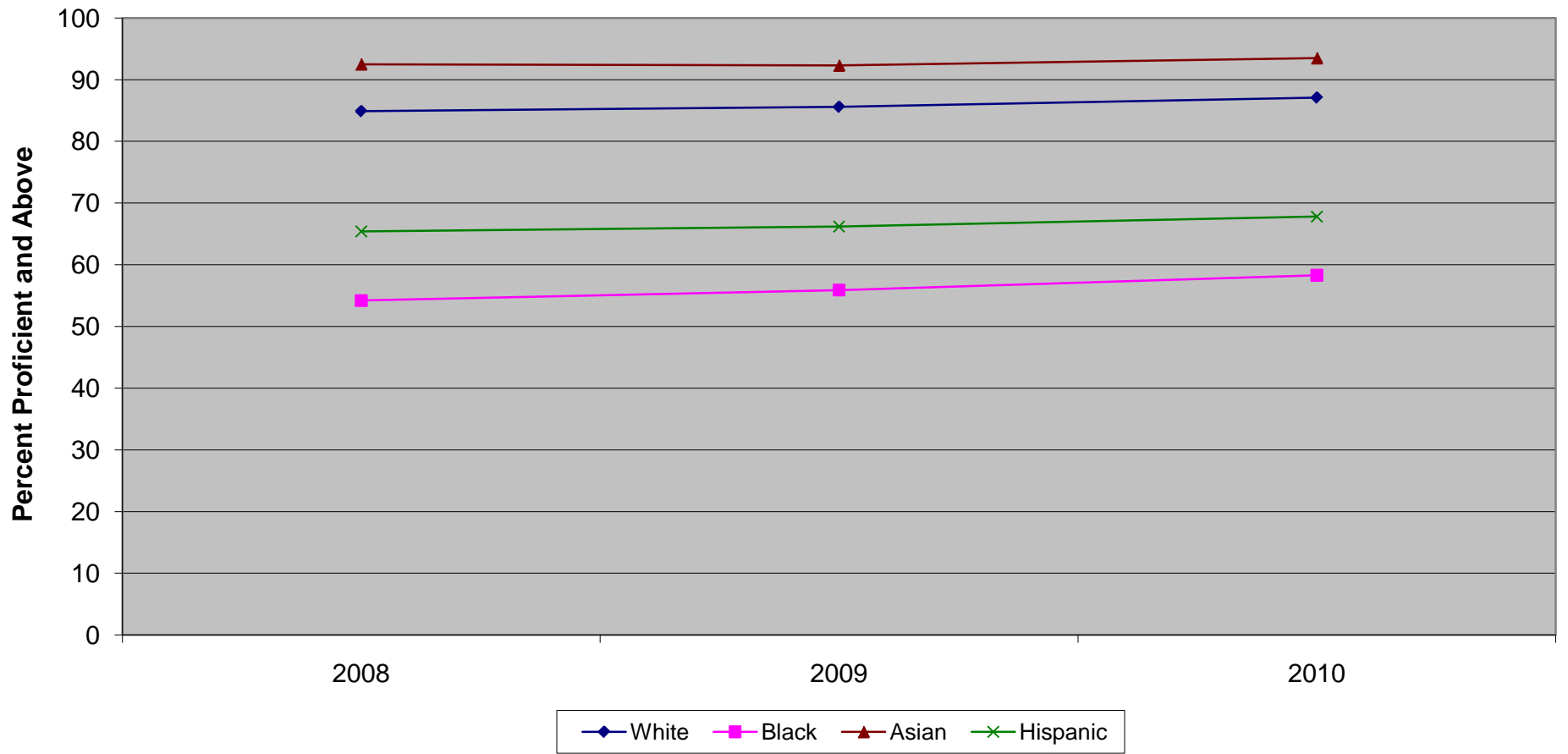
Ethnic codes Pacific Islander, American Indian/Alaskan Native and Other are not shown due to the small number of students in these categories.

**New Jersey Assessment of Skills and Knowledge
Grade 5 Language Arts Literacy Proficient and Above by Ethnicity (2008 - 2010)**

	2008	2009	2010
White	70.6	76.9	73.0
Black	36.4	42.2	41.7
Asian	79.8	83.7	82.5
Hispanic	41.3	47.4	46.9

|

New Jersey Assessment of Skills and Knowledge
Grade 5 Mathematics Proficient and Above by Ethnicity (2008 - 2010)



Ethnic codes Pacific Islander, American Indian/Alaskan Native and Other are not shown due to the small number of students in these categories.

**New Jersey Assessment of Skills and Knowledge
Grade 5 Mathematics Proficient and Above by Ethnicity (2008 - 2010)**

	2008	2009	2010
White	84.9	85.6	87.1
Black	54.2	55.9	58.3
Asian	92.5	92.3	93.5
Hispanic	65.4	66.2	67.8

|