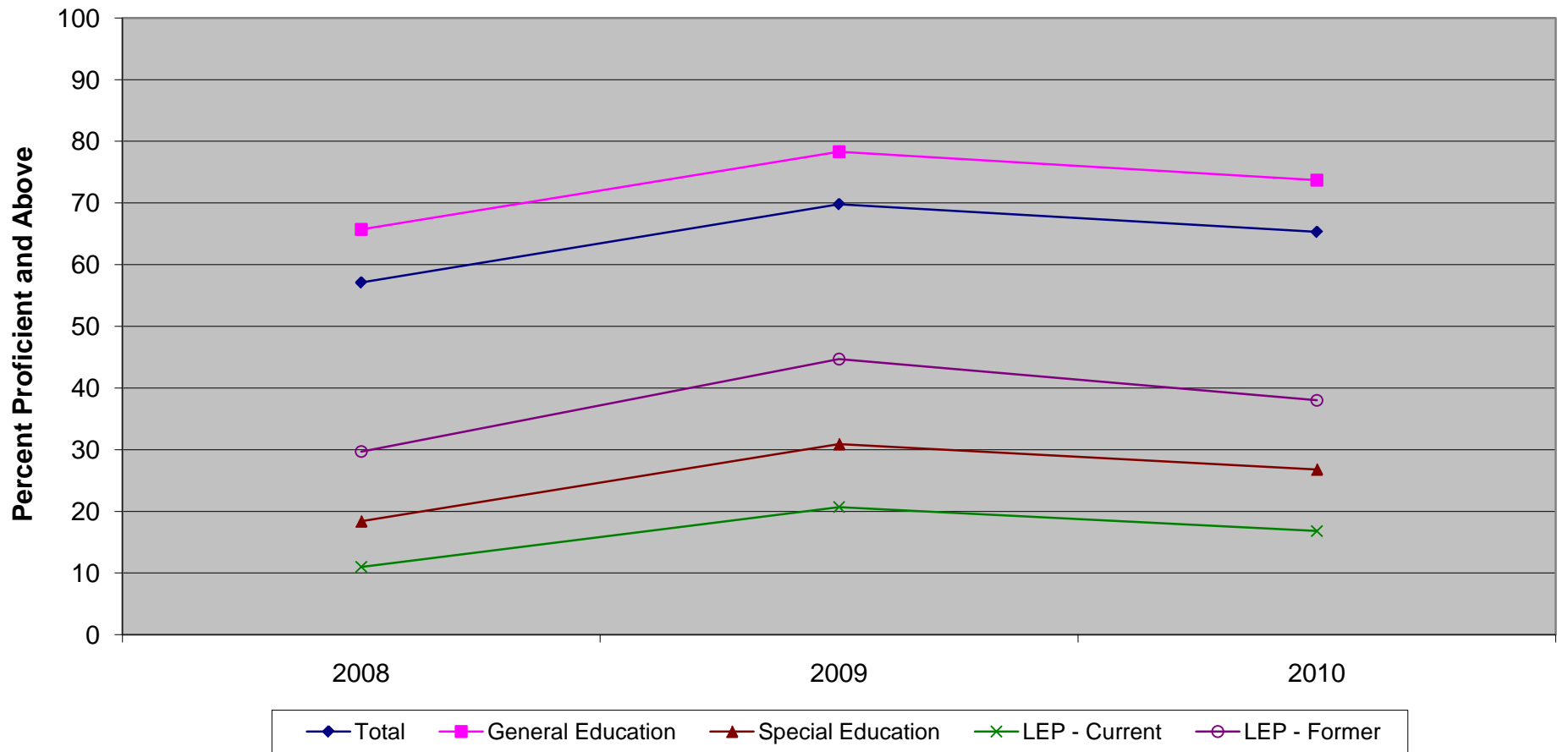


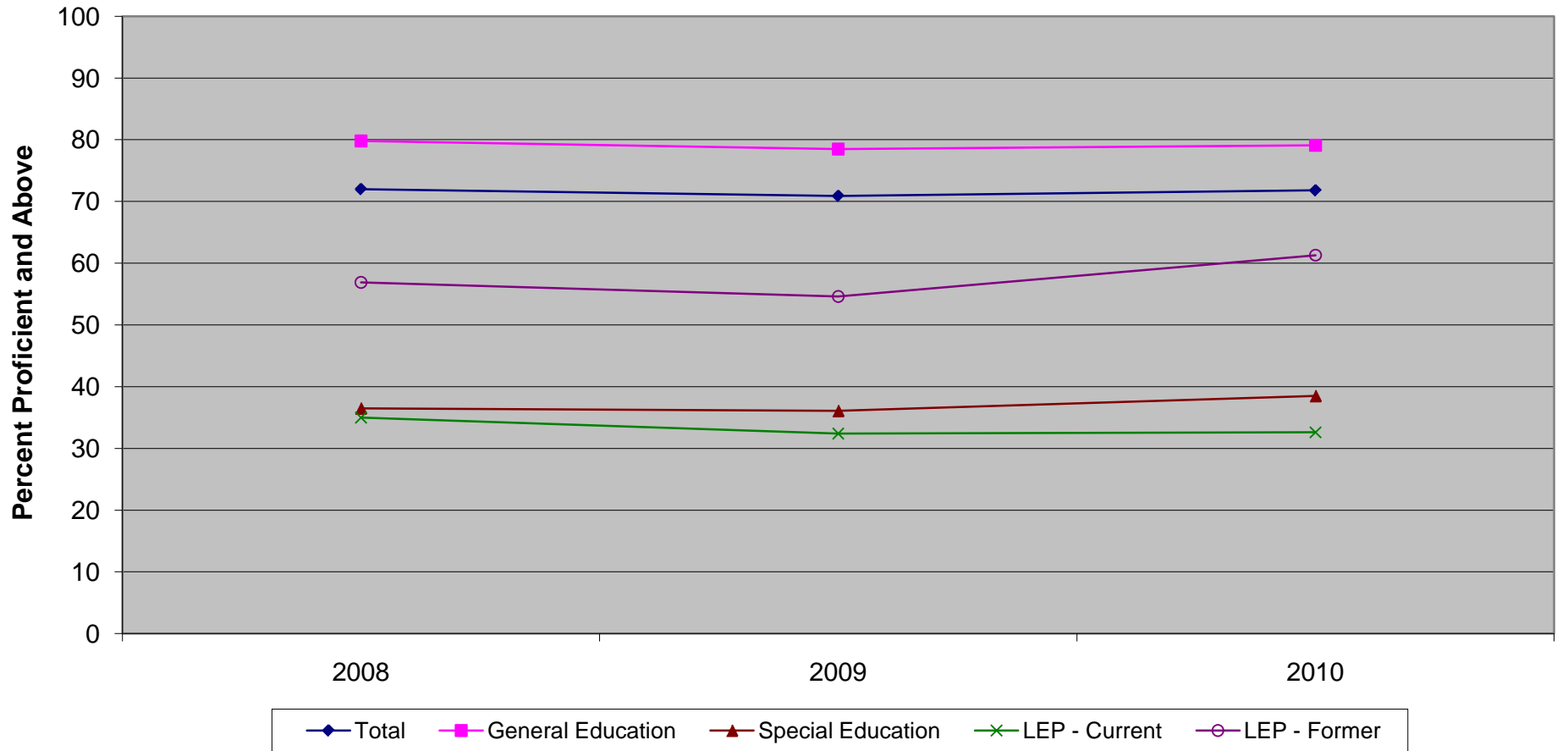
**New Jersey Assessment of Skills and Knowledge  
Grade 6 Language Arts Literacy Percent Proficient and Above by Instructional Group (2008 - 2010)**



**New Jersey Assessment of Skills and Knowledge  
Grade 6 Language Arts Literacy Percent Proficient and Above by Instructional Group (2008 - 2010)**

	<b>2008</b>	<b>2009</b>	<b>2010</b>
Total	57.1	69.8	65.3
General Education	65.7	78.3	73.7
Special Education	18.4	30.9	26.8
LEP - Current	11.0	20.7	16.8
LEP - Former	29.7	44.7	38.0

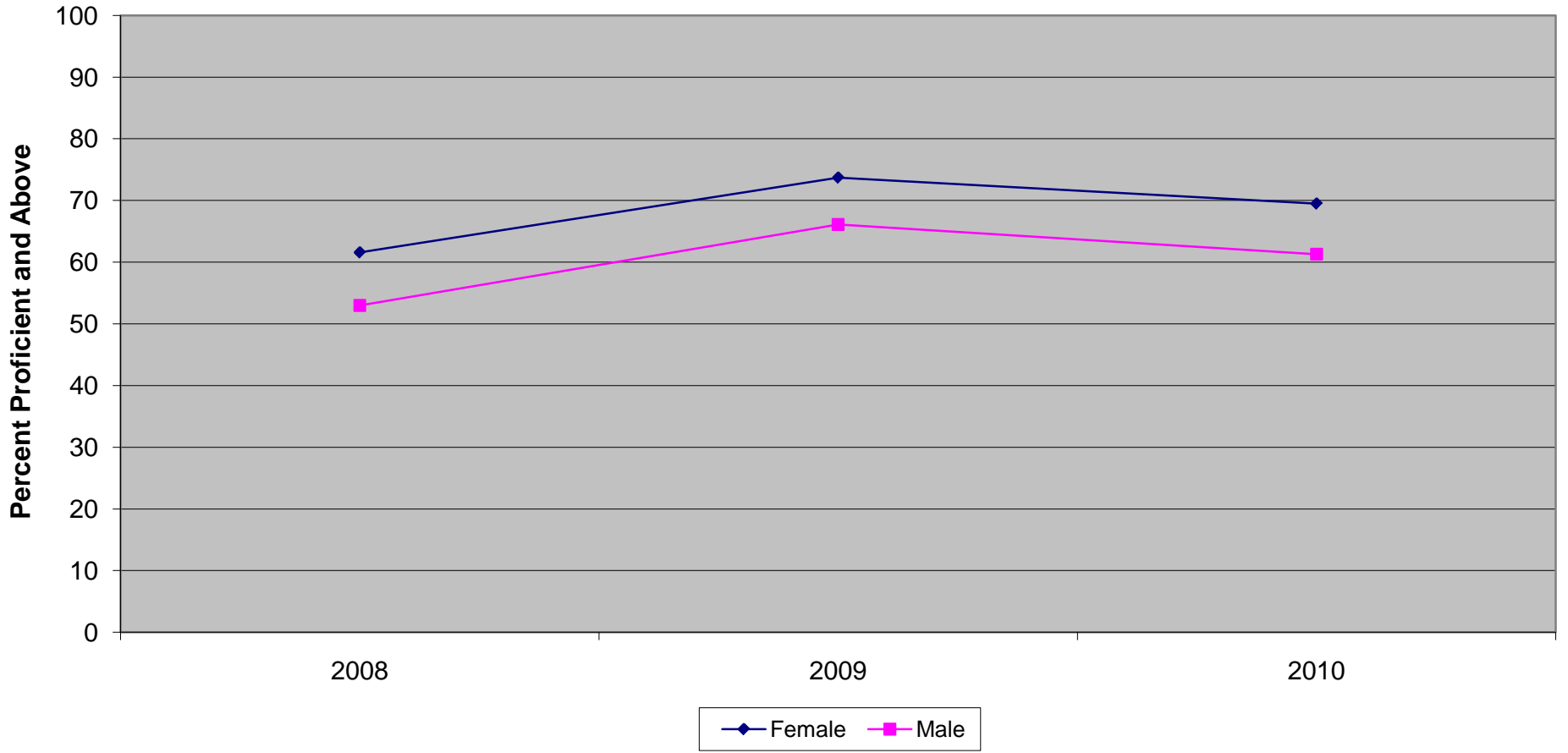
**New Jersey Assessment of Skills and Knowledge  
Grade 6 Mathematics Proficient and Above by Instructional Group (2008 - 2010)**



**New Jersey Assessment of Skills and Knowledge  
Grade 6 Mathematics Proficient and Above by Instructional Group (2008 - 2010)**

	<b>2008</b>	<b>2009</b>	<b>2010</b>
Total	72.0	70.9	71.8
General Education	79.8	78.5	79.1
Special Education	36.5	36.1	38.5
LEP - Current	35.0	32.4	32.6
LEP - Former	56.9	54.6	61.3

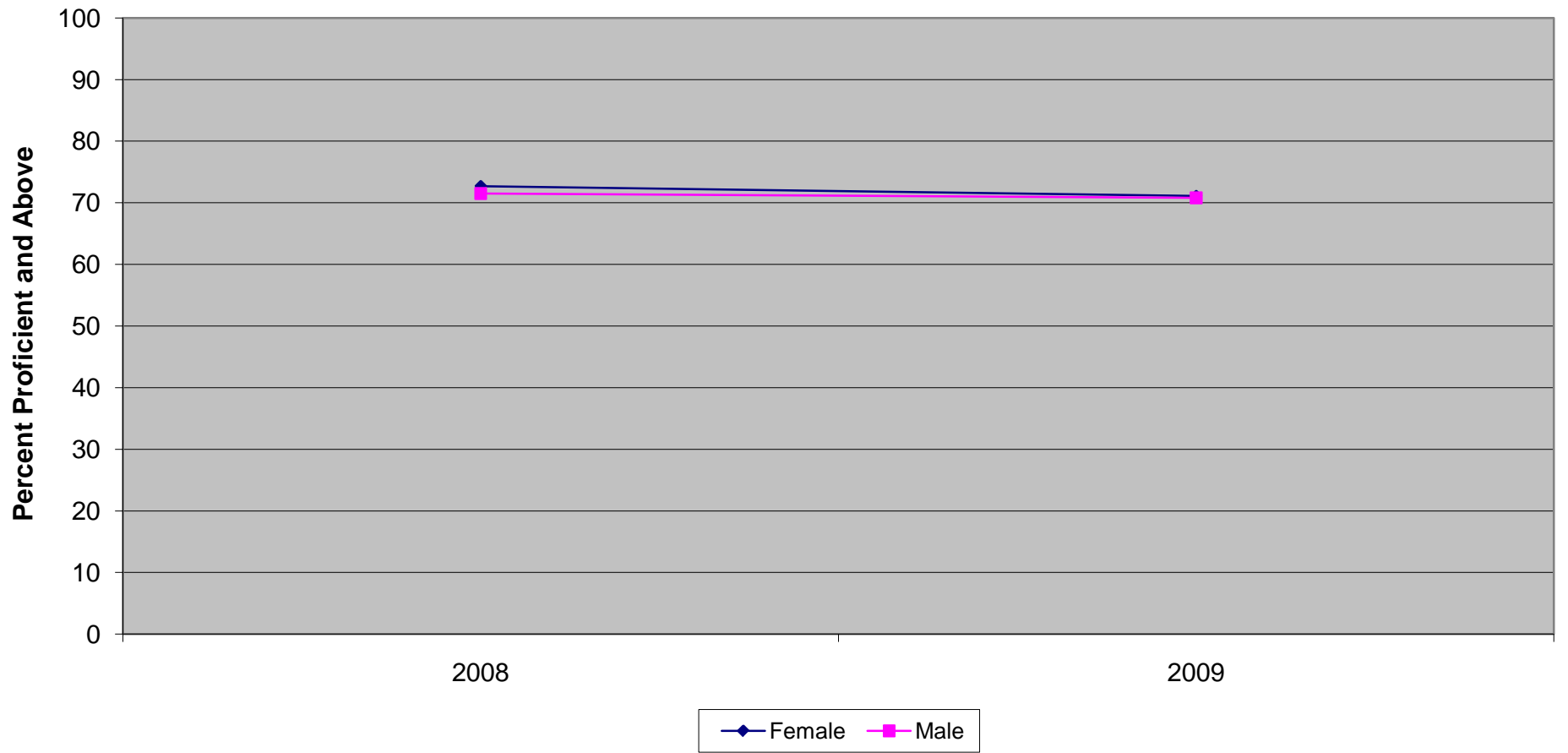
**New Jersey Assessment of Skills and Knowledge  
Grade 6 Language Arts Literacy Proficient and Above by Gender (2008 - 2010)**



**New Jersey Assessment of Skills and Knowledge  
Grade 6 Language Arts Literacy Proficient and Above by Gender (2008 - 2010)**

	<b>2008</b>	<b>2009</b>	<b>2010</b>
Female	61.6	73.7	69.5
Male	53.0	66.1	61.3

**New Jersey Assessment of Skills and Knowledge  
Grade 6 Mathematics Proficient and Above by Gender (2008 - 2010)**

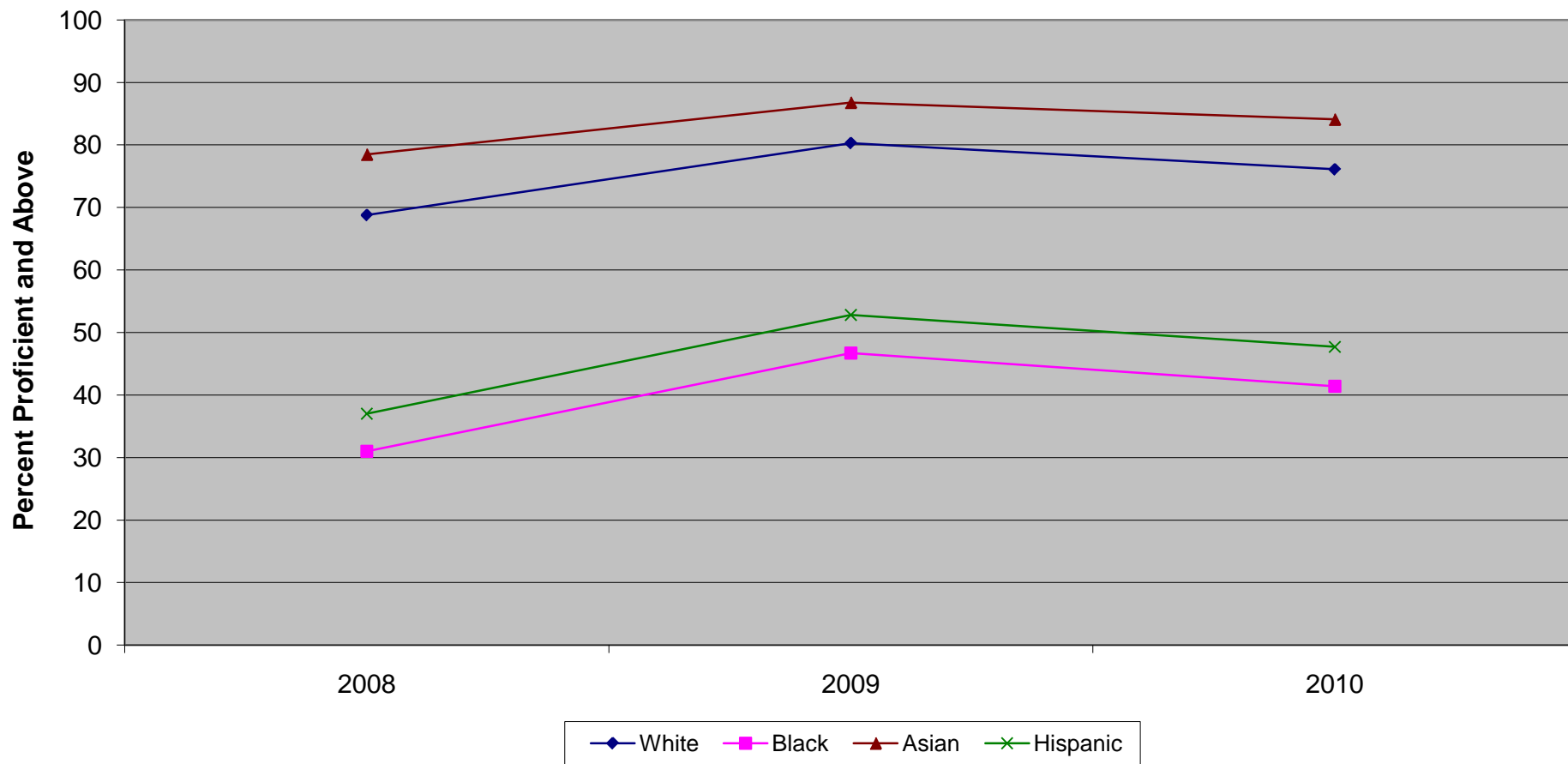


**New Jersey Assessment of Skills and Knowledge  
Grade 6 Mathematics Proficient and Above by Gender (2008 - 2010)**

	<b>2008</b>	<b>2009</b>	<b>2010</b>
Female	72.7	71.1	72.6
Male	71.5	70.8	71.1



New Jersey Assessment of Skills and Knowledge  
Grade 6 Language Arts Literacy Proficient and Above by Ethnicity (2008 - 2010)

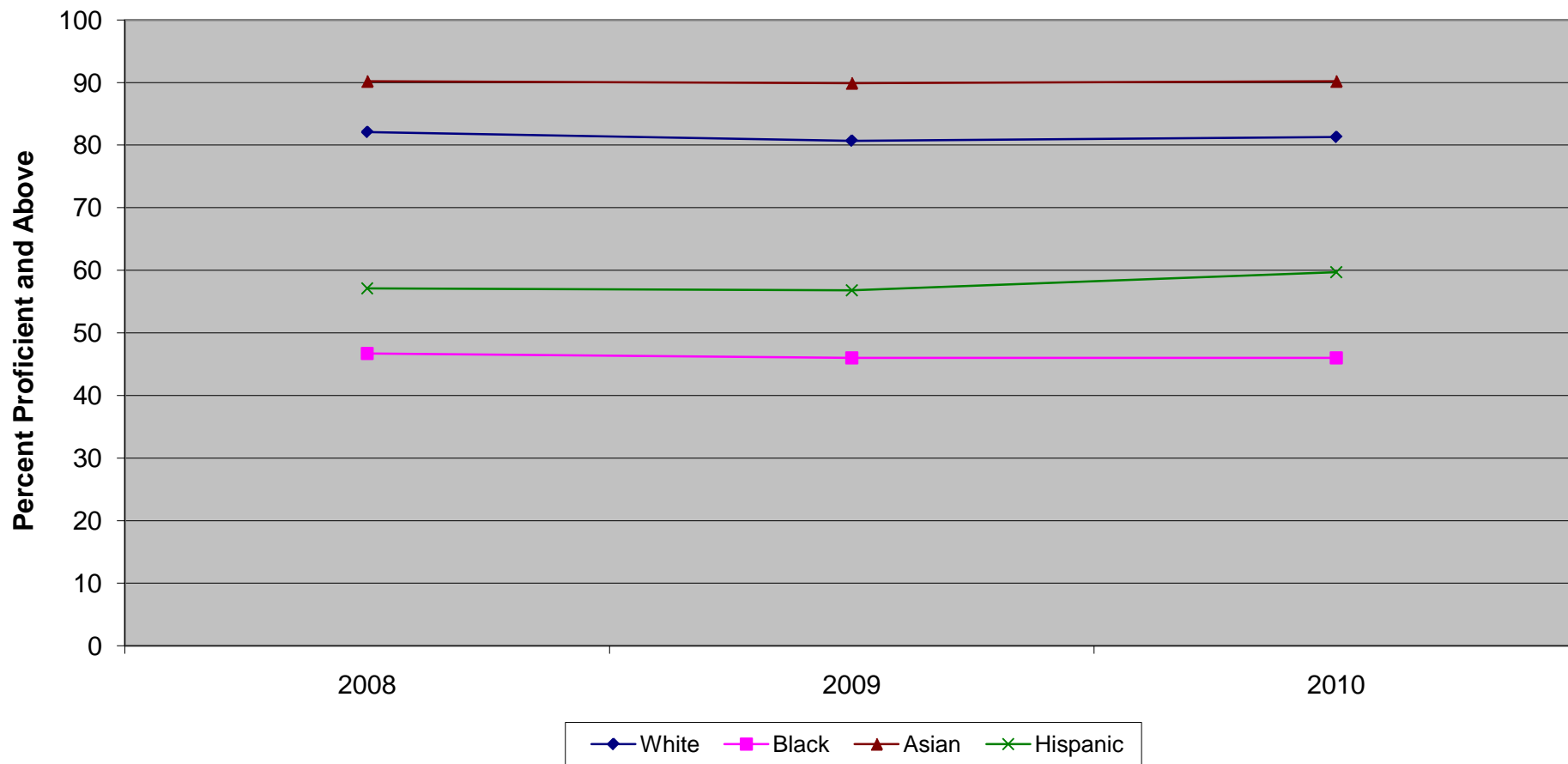


Ethnic codes Pacific Islander, American Indian/Alaskan Native and Other are not shown due to the small number of students in these categories.

**New Jersey Assessment of Skills and Knowledge  
Grade 6 Language Arts Literacy Proficient and Above by Ethnicity (2008 - 2010)**

	<b>2008</b>	<b>2009</b>	<b>2010</b>
White	68.8	80.3	76.1
Black	31.0	46.7	41.4
Asian	78.5	86.8	84.1
Hispanic	37.0	52.8	47.7

New Jersey Assessment of Skills and Knowledge  
Grade 6 Mathematics Proficient and Above by Ethnicity (2008 - 2010)



Ethnic codes Pacific Islander, American Indian/Alaskan Native and Other are not shown due to the small number of students in these categories.

**New Jersey Assessment of Skills and Knowledge  
Grade 6 Mathematics Proficient and Above by Ethnicity (2008 - 2010)**

	<b>2008</b>	<b>2009</b>	<b>2010</b>
White	82.1	80.7	81.3
Black	46.7	46.0	46.0
Asian	90.2	89.9	90.2
Hispanic	57.1	56.8	59.7