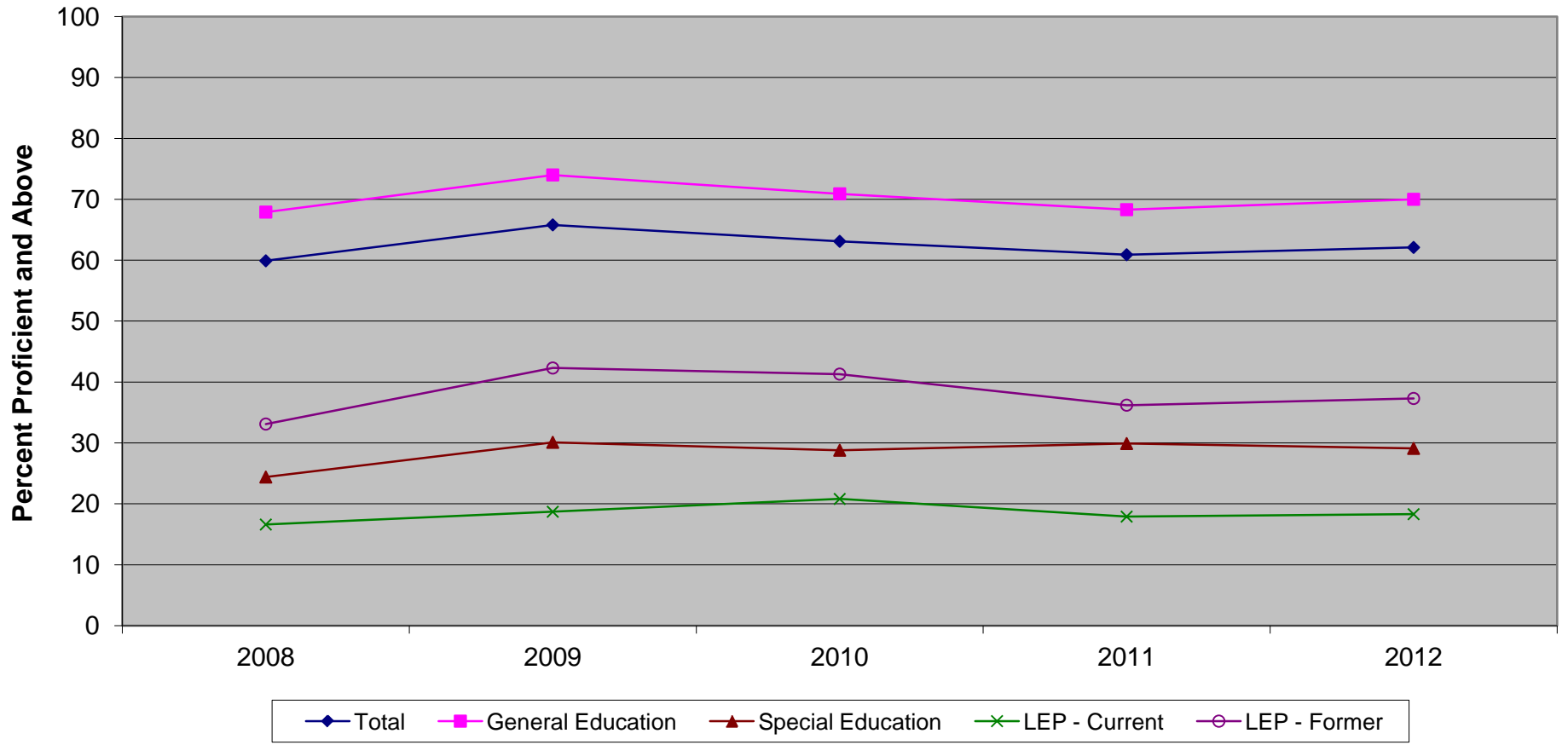


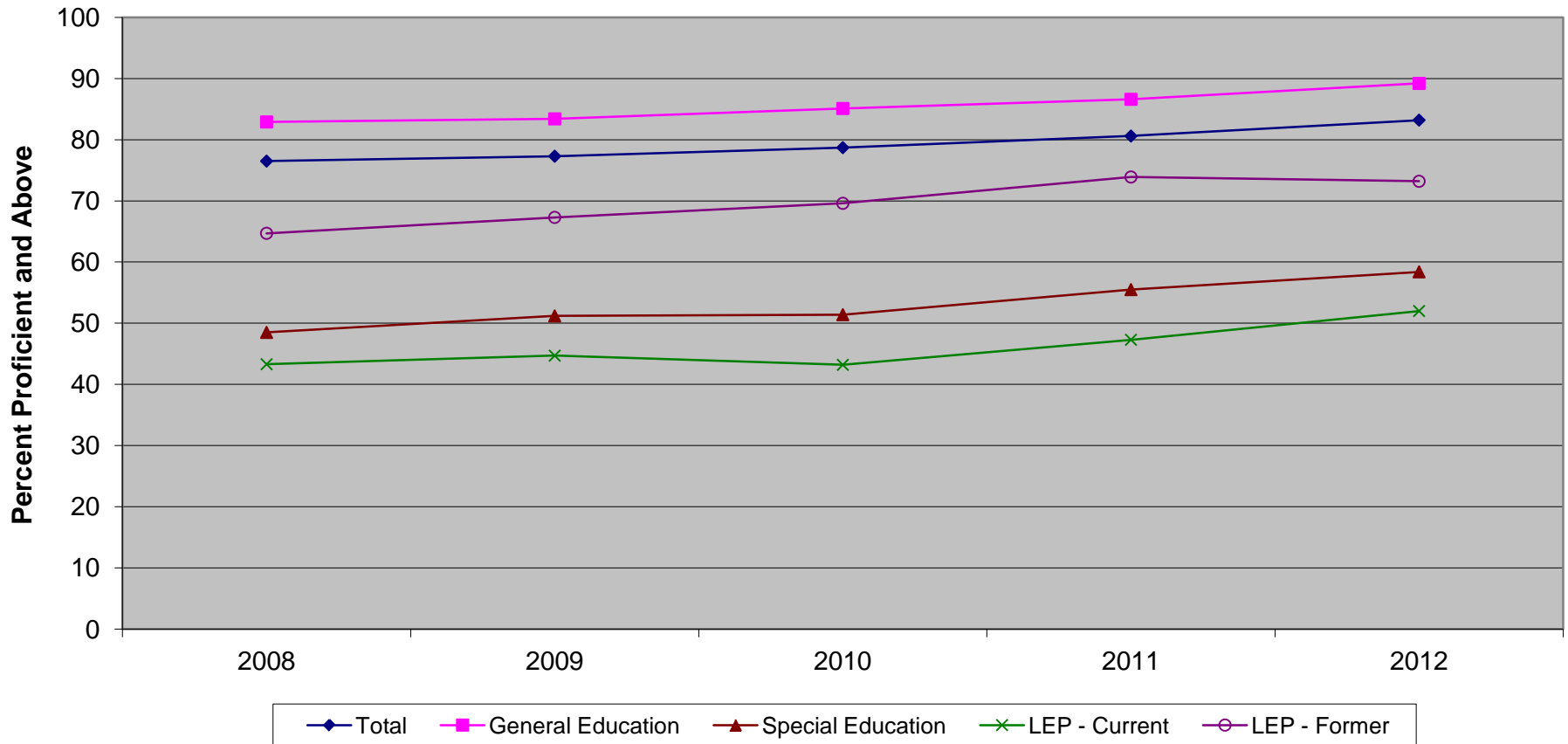
New Jersey Assessment of Skills and Knowledge  
Grade 5 Language Arts Literacy Proficient and Above  
by Instructional Group (2008 - 2012)



**New Jersey Assessment of Skills and Knowledge  
Grade 5 Language Arts Literacy Proficient and Above  
by Instructional Group (2008 - 2012)**

	<b>2008</b>	<b>2009</b>	<b>2010</b>	<b>2011</b>	<b>2012</b>
Total	59.9	65.8	63.1	60.9	62.1
General Education	67.9	74.0	70.9	68.3	70.0
Special Education	24.4	30.1	28.8	29.9	29.1
LEP - Current	16.6	18.7	20.8	17.9	18.3
LEP - Former	33.1	42.3	41.3	36.2	37.3

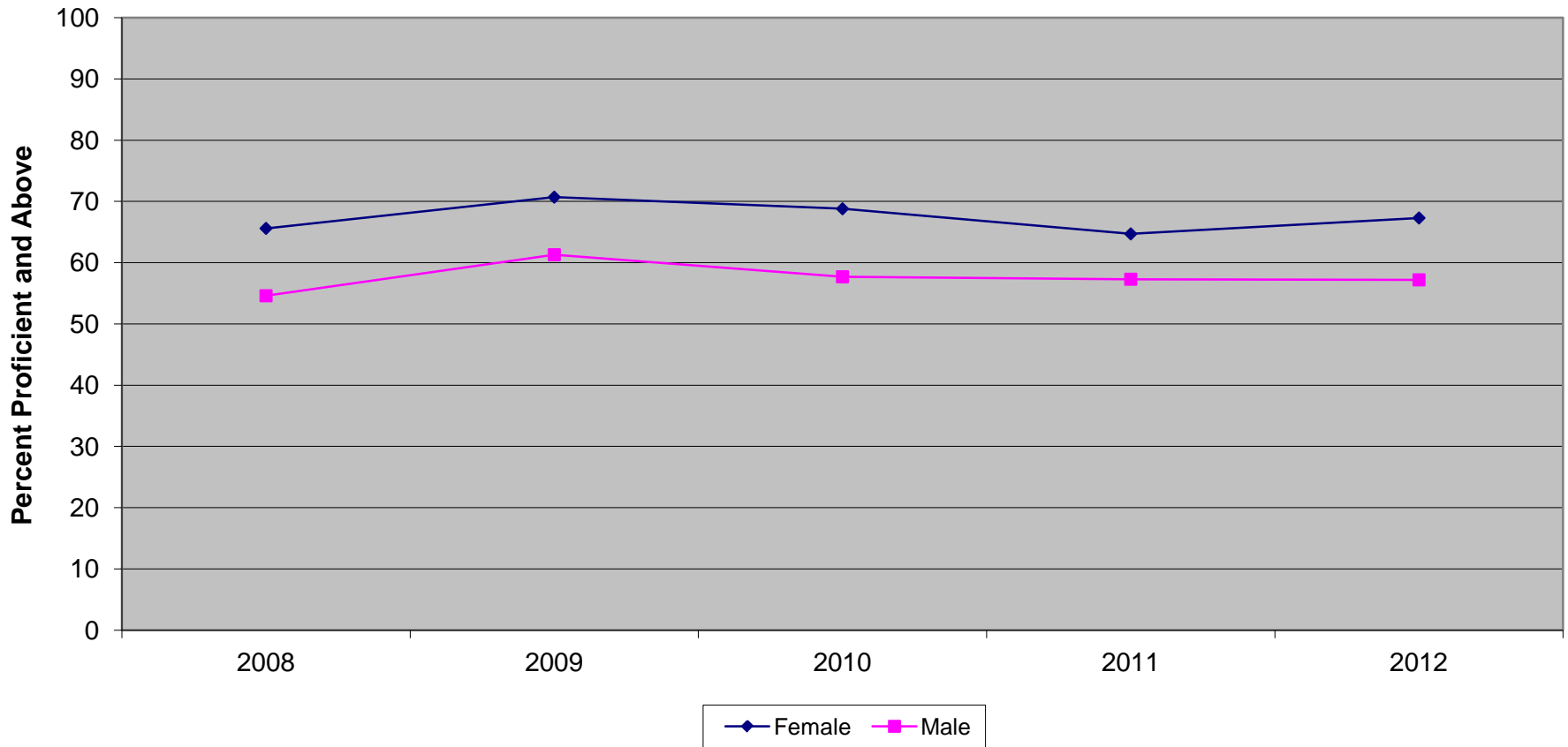
New Jersey Assessment of Skills and Knowledge  
Grade 5 Mathematics Proficient and Above  
by Instructional Group (2008 - 2012)



**New Jersey Assessment of Skills and Knowledge  
Grade 5 Mathematics Proficient and Above  
by Instructional Group (2008 - 2012)**

	<b>2008</b>	<b>2009</b>	<b>2010</b>	<b>2011</b>	<b>2012</b>
Total	76.5	77.3	78.7	80.6	83.2
General Education	82.9	83.4	85.1	86.6	89.2
Special Education	48.5	51.2	51.4	55.5	58.4
LEP - Current	43.3	44.7	43.2	47.3	52.0
LEP - Former	64.7	67.3	69.6	73.9	73.2

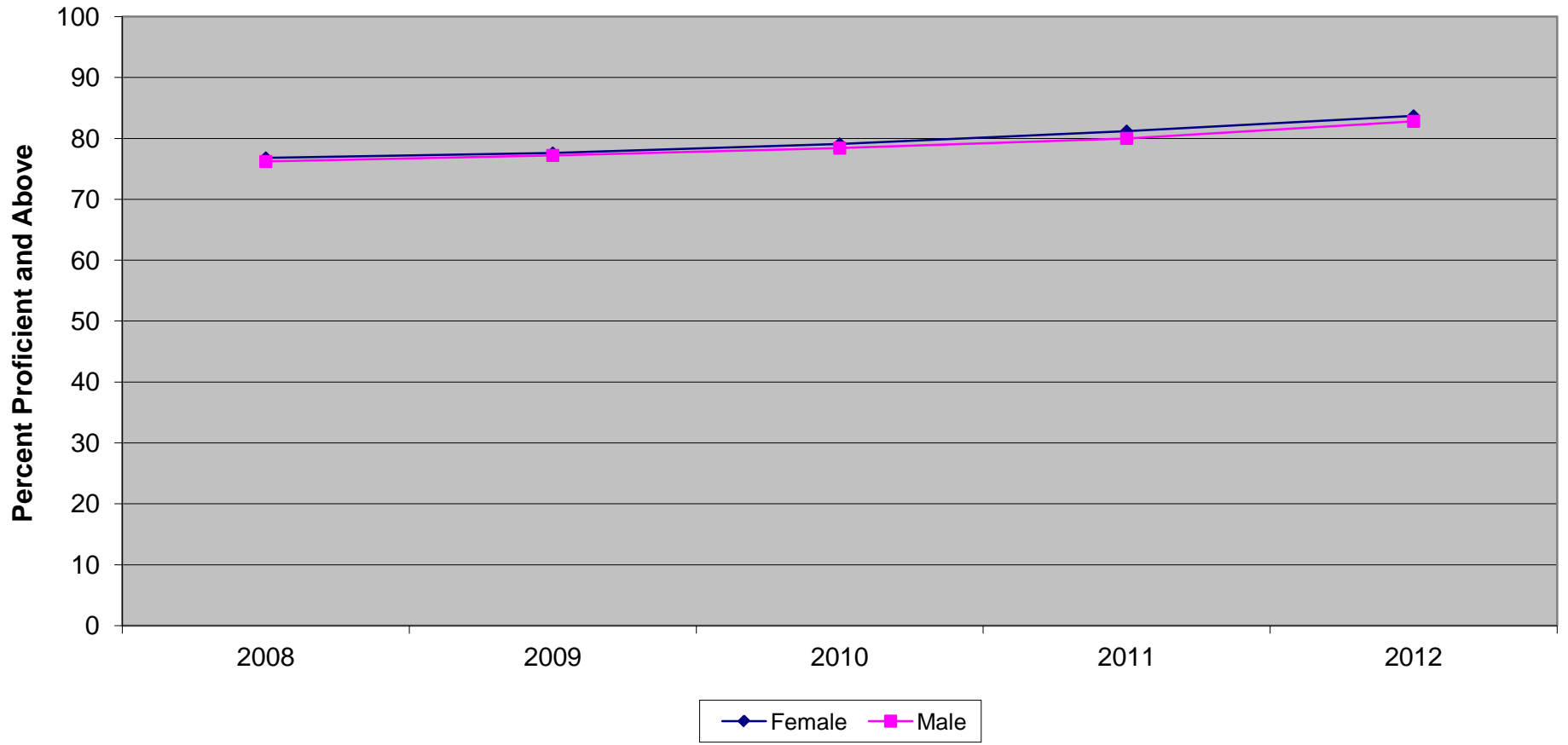
New Jersey Assessment of Skills and Knowledge  
Grade 5 Language Arts Literacy Proficient and Above  
by Gender (2008 - 2012)



**New Jersey Assessment of Skills and Knowledge  
Grade 5 Language Arts Literacy Proficient and Above  
by Gender (2008 - 2012)**

	<b>2008</b>	<b>2009</b>	<b>2010</b>	<b>2011</b>	<b>2012</b>
Female	65.6	70.7	68.8	64.7	67.3
Male	54.6	61.3	57.7	57.3	57.2

New Jersey Assessment of Skills and Knowledge  
Grade 5 Mathematics Proficient and Above  
by Gender (2008 - 2012)

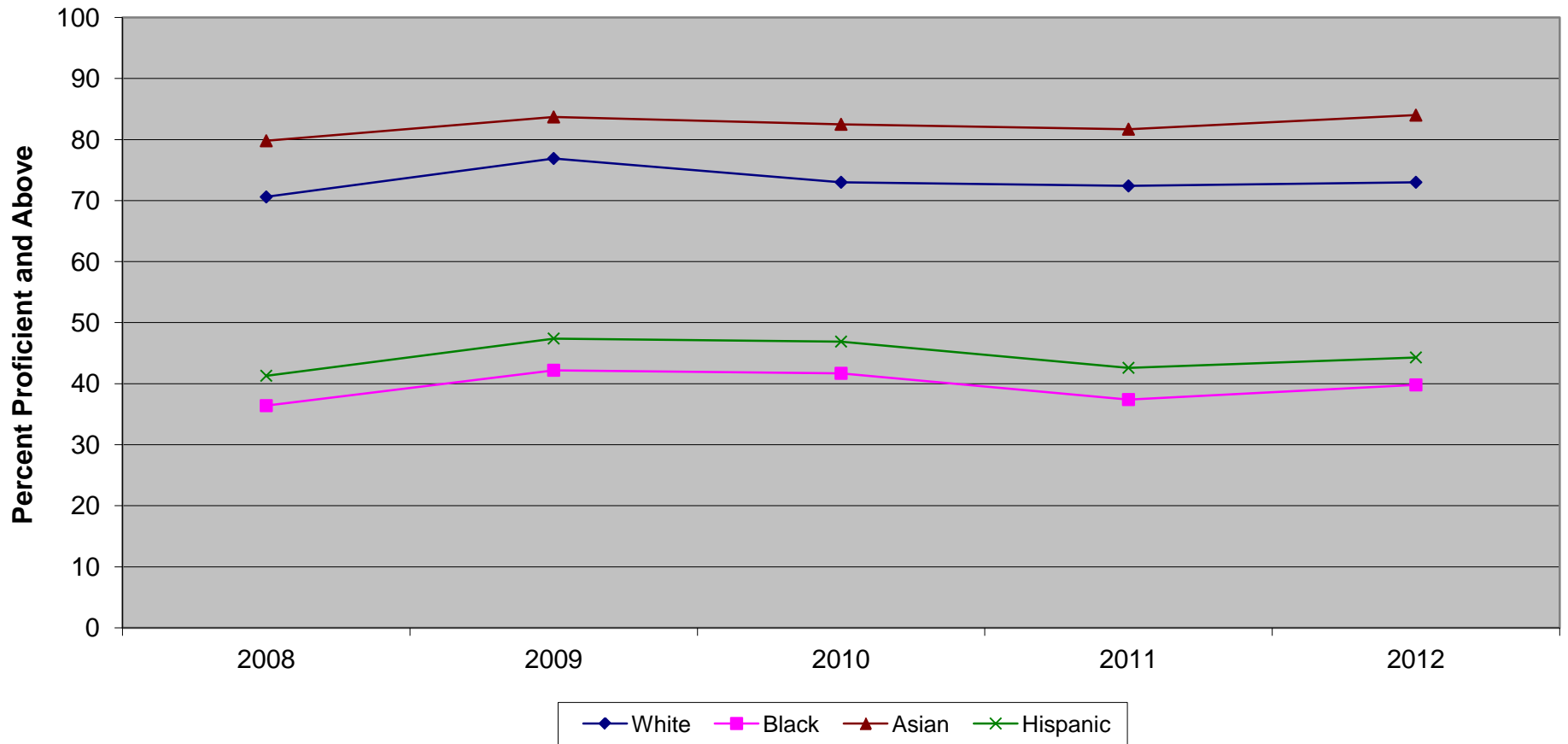


**New Jersey Assessment of Skills and Knowledge  
Grade 5 Mathematics Proficient and Above  
by Gender (2008 - 2012)**

	<b>2008</b>	<b>2009</b>	<b>2010</b>	<b>2011</b>	<b>2012</b>
Female	76.8	77.6	79.1	81.2	83.7
Male	76.2	77.2	78.4	80.0	82.8



New Jersey Assessment of Skills and Knowledge  
Grade 5 Language Arts Literacy Proficient and Above  
by Ethnicity (2008 - 2012)

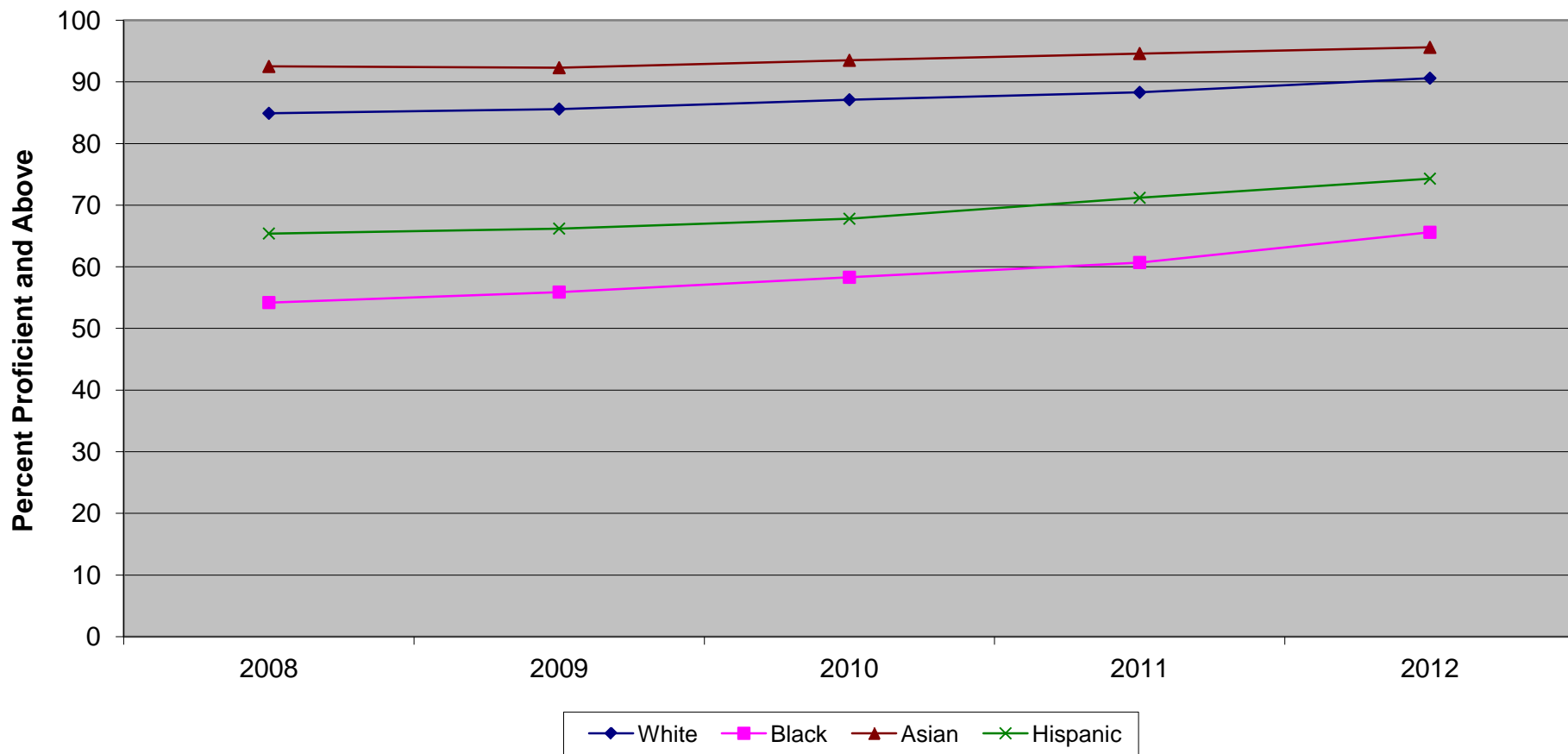


Ethnic codes Pacific Islander, American Indian/Alaskan Native and Other are not shown due to the small number of students in these categories.

**New Jersey Assessment of Skills and Knowledge  
Grade 5 Language Arts Literacy Proficient and Above  
by Ethnicity (2008 - 2012)**

	<b>2008</b>	<b>2009</b>	<b>2010</b>	<b>2011</b>	<b>2012</b>
White	70.6	76.9	73.0	72.4	73.0
Black	36.4	42.2	41.7	37.4	39.8
Asian	79.8	83.7	82.5	81.7	84.0
Hispanic	41.3	47.4	46.9	42.6	44.3

New Jersey Assessment of Skills and Knowledge  
Grade 5 Mathematics Proficient and Above  
by Ethnicity (2008 - 2012)

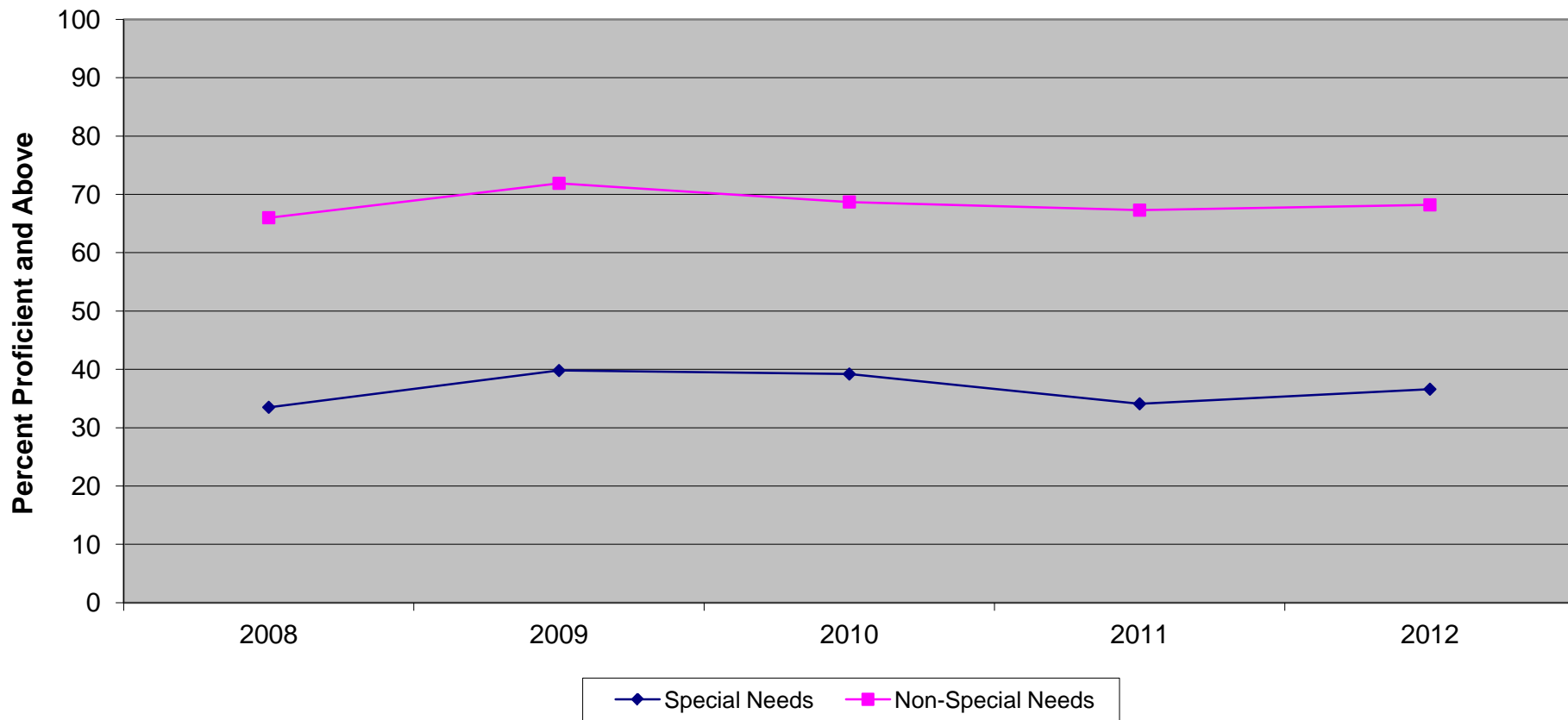


Ethnic codes Pacific Islander, American Indian/Alaskan Native and Other are not shown due to the small number of students in these categories.

**New Jersey Assessment of Skills and Knowledge  
Grade 5 Mathematics Proficient and Above  
by Ethnicity (2008 - 2012)**

	<b>2008</b>	<b>2009</b>	<b>2010</b>	<b>2011</b>	<b>2012</b>
White	84.9	85.6	87.1	88.3	90.6
Black	54.2	55.9	58.3	60.7	65.6
Asian	92.5	92.3	93.5	94.6	95.6
Hispanic	65.4	66.2	67.8	71.2	74.3

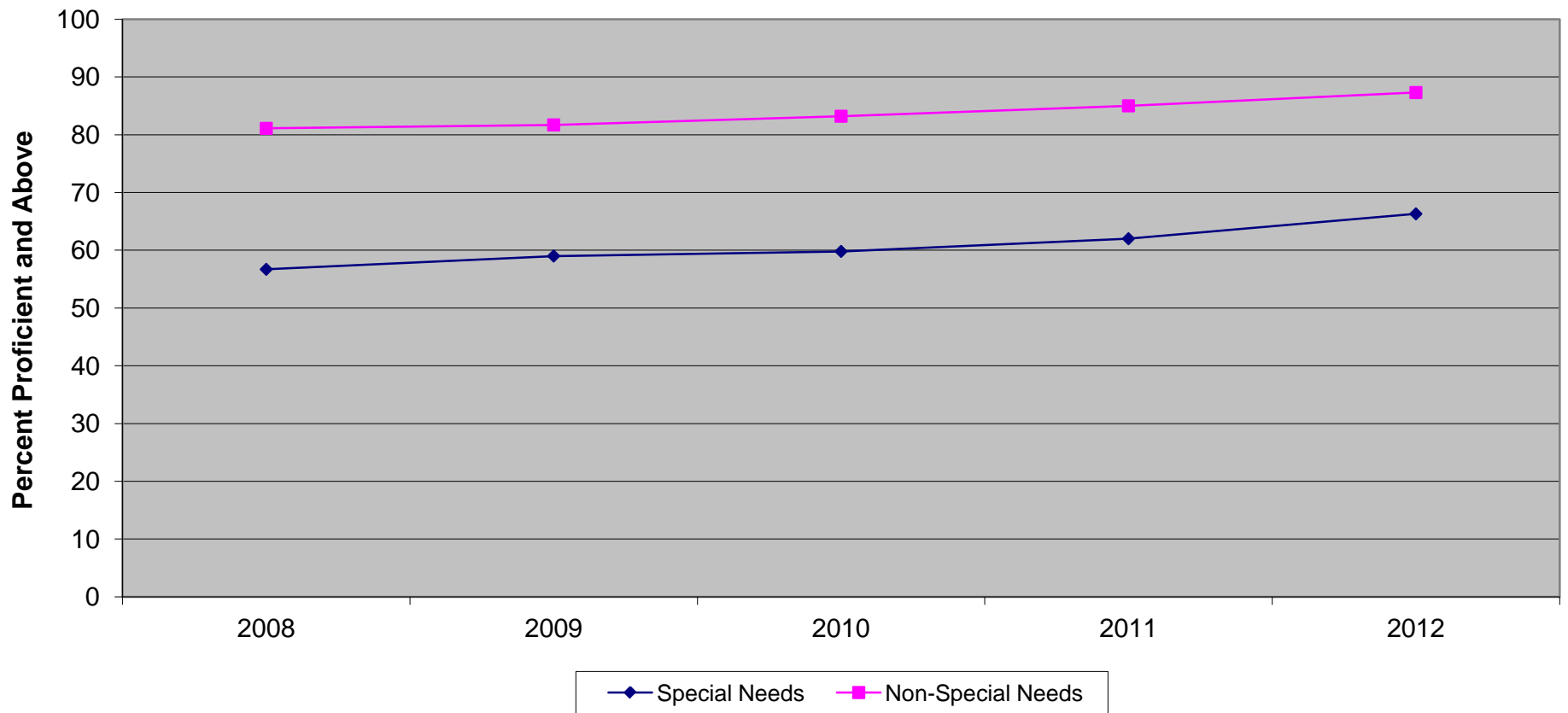
**New Jersey Assessment of Skills and Knowledge  
Grade 5 Language Arts Literacy Proficient and Above  
Special Needs vs Non-Special Needs (2008-2012)**



**New Jersey Assessment of Skills and Knowledge  
Grade 5 Language Arts Literacy Proficient and Above  
Special Needs vs Non-Special Needs (2008-2012)**

	<b>2008</b>	<b>2009</b>	<b>2010</b>	<b>2011</b>	<b>2012</b>
Special Needs	33.5	39.8	39.2	34.1	36.6
Non-Special Needs	66.0	71.9	68.7	67.3	68.2

**New Jersey Assessment of Skills and Knowledge  
Grade 5 Mathematics Proficient and Above  
Special Needs vs Non-Special Needs (2008 - 2012)**

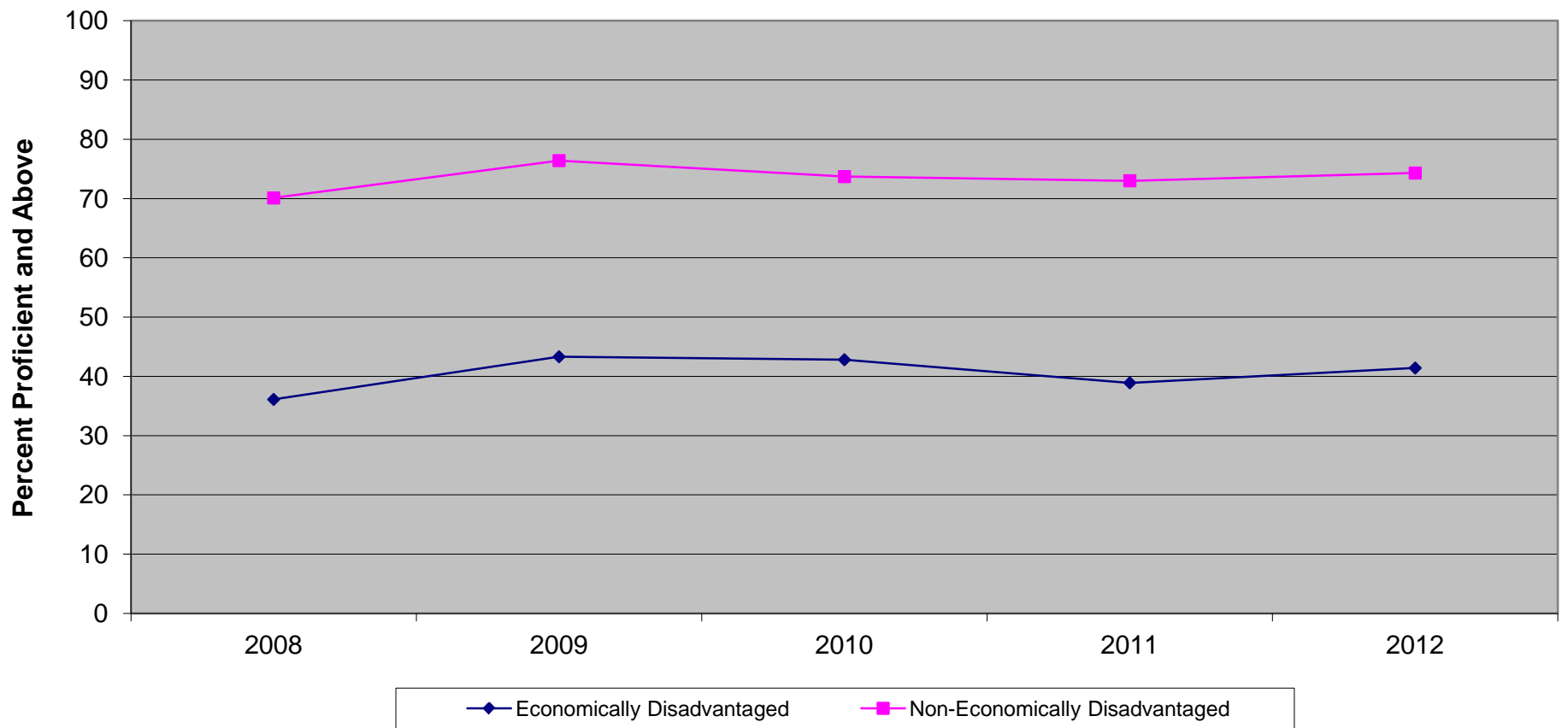


**New Jersey Assessment of Skills and Knowledge  
Grade 5 Mathematics Proficient and Above  
Special Needs vs Non-Special Needs (2008 - 2012)**

	<b>2008</b>	<b>2009</b>	<b>2010</b>	<b>2011</b>	<b>2012</b>
Special Needs	56.7	59.0	59.8	62.0	66.3
Non-Special Needs	81.1	81.7	83.2	85.0	87.3



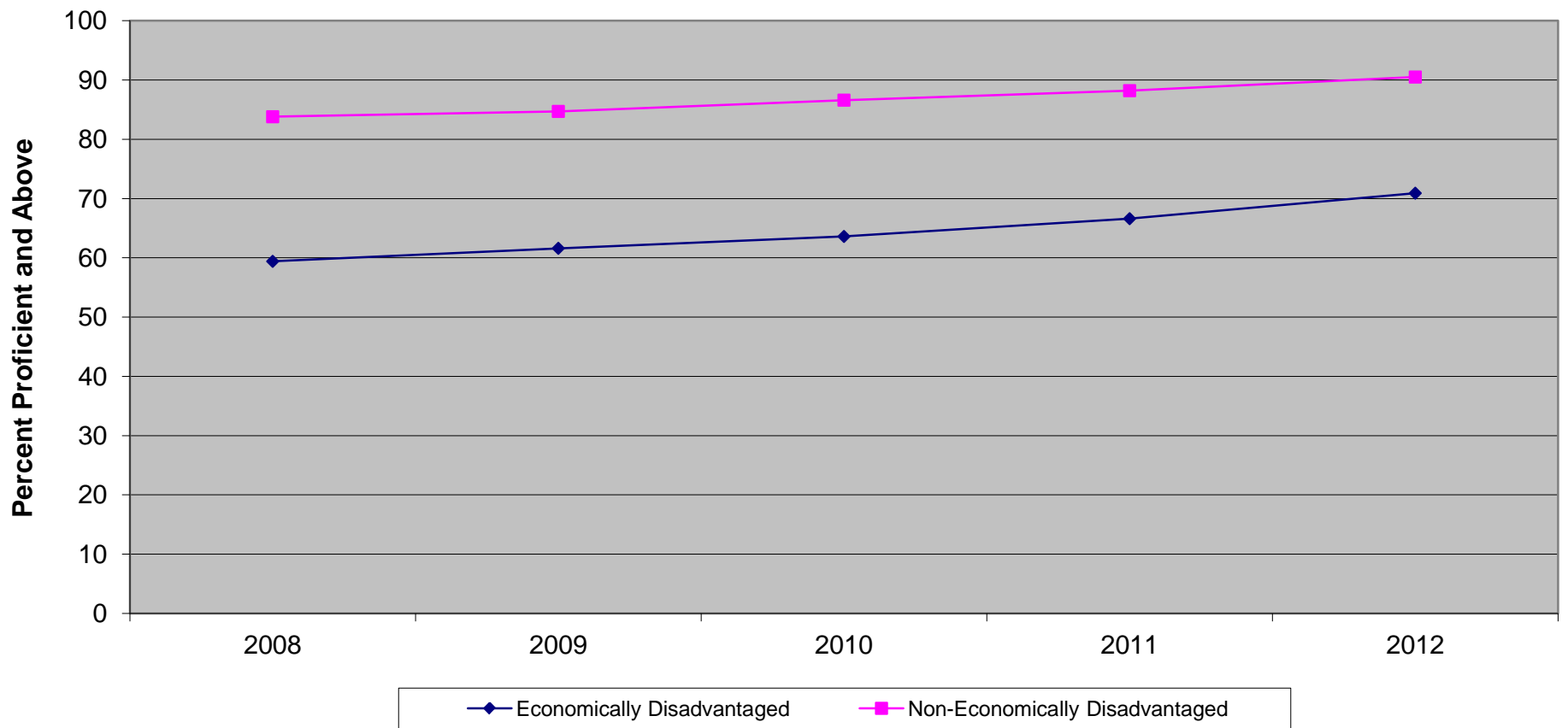
New Jersey Assessment of Skills and Knowledge  
Grade 5 Language Arts Literacy Proficient and Above  
Economically Disadvantaged vs Non-Economically Disadvantaged (2008 - 2012)



**New Jersey Assessment of Skills and Knowledge  
Grade 5 Language Arts Literacy Proficient and Above  
Economically Disadvantaged vs Non-Economically Disadvantaged (2008 - 2012)**

	<b>2008</b>	<b>2009</b>	<b>2010</b>	<b>2011</b>	<b>2012</b>
Economically Disadvantaged	36.1	43.3	42.8	38.9	41.4
Non-Economically Disadvantaged	70.1	76.4	73.7	73.0	74.3

New Jersey Assessment of Skills and Knowledge  
Grade 5 Mathematics Proficient and Above  
Economically Disadvantaged vs Non-Economically Disadvantaged (2008 - 2012)



**New Jersey Assessment of Skills and Knowledge  
Grade 5 Mathematics Proficient and Above  
Economically Disadvantaged vs Non-Economically Disadvantaged (2008 - 2012)**

	<b>2008</b>	<b>2009</b>	<b>2010</b>	<b>2011</b>	<b>2012</b>
Economically Disadvantaged	59.4	61.6	63.6	66.6	70.9
Non-Economically Disadvantaged	83.8	84.7	86.6	88.2	90.5