



***Hudson Arts and Science
Charter School***

**ANNUAL COMPREHENSIVE
FINANCIAL REPORT**

**FOR THE FISCAL YEAR ENDED
JUNE 30, 2024**

PREPARED BY

HUDSON ARTS AND SCIENCE CHARTER SCHOOL

HUDSON ARTS AND SCIENCE CHARTER SCHOOL

Table of Contents

Introductory Section

Letter of Transmittal	1-13
Organizational Chart	14
Roster of Officials	15
Consultants and Advisors	16

Financial Section

Report of Independent Auditors.....	18-21
-------------------------------------	-------

Required Supplementary Information – Part I

Management’s Discussion and Analysis	23-30
--	-------

Basic Financial Statements

A Charter School-wide Financial Statements:

A-1 Statement of Net Position	33
A-2 Statement of Activities	34

B Fund Financial Statements:

Governmental Funds:

B-1 Balance Sheet.....	37
B-2 Statement of Revenues, Expenditures, and Changes in Fund Balances	38
B-3 Reconciliation of the Statement of Revenues, Expenditures and Changes in Fund Balances of Governmental Funds to the Statement of Activities	39

Proprietary Funds:

B-4 Statement of Net Position	41
B-5 Statement of Revenues, Expenses, and Changes in Fund Net Position.....	42
B-6 Statement of Cash Flows	43

HUDSON ARTS AND SCIENCE CHARTER SCHOOL

Table of Contents

Fiduciary Funds:

B-7 Statement of Fiduciary Net Position	Not Applicable
B-8 Statement of Changes in Fiduciary Net Position	Not Applicable

Notes to the Basic Financial Statements	46-87
---	-------

Required Supplementary Information – Part II

C. Budgetary Comparison Schedules:

C-1 Budgetary Comparison Schedule – General Fund	89
C-2 Budgetary Comparison Schedule – Special Revenue Fund	90

Notes to the Required Supplementary Information

C-3 Budget-to-GAAP Reconciliation	92
---	----

Required Supplementary Information – Part III

L. Schedules Related to Accounting and Reporting for Pensions (GASB 68):

L-1 Schedule of the Charter School Proportionate Share of the Net Pension Liability – Public Employee’s Retirement System (PERS)	93
L-2 Schedule of Charter School Contributions – Public Employee’s Retirement System (PERS)	94
L-3 Schedule of the Charter School Proportionate Share of the Net Pension Liability – Teacher’s Pension and Annuity Fund (TPAF)	95

M. Schedule Related to Accounting and Reporting for OPEB (GASB 75)

M-1 Schedule of the State’s Proportionate Share of the Net OPEB Liability Associated with the Charter School and Changes in the Total OPEB Liability Related Ratios - (PERS and TPAF)	96
---	----

Notes to Required Supplementary Information – Pension Schedules	97
---	----

Other Supplementary Information

D. Schedule of Charter School Contributions - PERS	Not Applicable
--	----------------

HUDSON ARTS AND SCIENCE CHARTER SCHOOL

Table of Contents

E. Special Revenue Fund:

E-1 Combining Schedule of Program Revenues and Expenditures Budgetary Basis	101
E-2 Schedule of Preschool Education Aid Budgetary Basis	Not Applicable

F. Capital Projects Fund

F-1 Summary Schedule of Project Expenditures	Not Applicable
--	----------------

G. Proprietary Funds:

Enterprise Fund:

G-1 Combining Statement of Net Position	104
G-2 Combining Statement of Revenues, Expenses and Changes in Fund Net Position.....	105
G-3 Combining Statement of Cash Flows	106

H. Fiduciary Fund:

H-1 Combining Statement of Fiduciary Net Position.....	Not Applicable
H-2 Combining Statement of Revenues, Expenses and Combining Statement of Changes in Fiduciary Net Position	Not Applicable

I. Long - Term Debt:

I-1 Schedule of Bonds Payable	Not Applicable
I-2 Schedule of Loans Payable	Not Applicable
I-3 Debt Service Fund Budgetary Comparison Schedule	Not Applicable

J. Introduction to the Statistical Section (Unaudited)

Financial Trends

J-1 Net Position by Component	111
J-2 Changes in Net Position.....	112
J-3 Fund Balances – Governmental Funds	113
J-4 Changes in Fund Balances – Governmental Funds	114
J-5 General Fund Other Local Revenue by Source	115

HUDSON ARTS AND SCIENCE CHARTER SCHOOL

Table of Contents

J. Introduction to the Statistical Section (Unaudited)

Revenue Capacity

J-6 to J-9.....	Not Applicable
-----------------	----------------

Debt Capacity

J-10 Ratios of Outstanding Debts by Type	116
J-11 to J-13.....	Not Applicable

Demographic and Economic Information

J-14 Demographics and Economic Statistics	117
J-15 Principal Employers	118

Operating Information

J-16 Full-time Equivalent Charter School Employees by Function/Program	119
J-17 Operating Statistics	120
J-18 School Building Information	121
J-19 Schedule of Required Maintenance Expenditures by School Facility	122
J-20 Insurance Schedule	123

Charter School Performance Framework Financial Indicators

J-21 Near Term Indicators	124
J-22 Sustainability Indicators.....	125

K. Single Audit Section

K-1 Independent Auditor's Report on Internal Control over Financial Reporting and on Compliance and Other Matters Based on an Audit of Financial Statements Performed in Accordance with <i>Government Auditing Standards</i>	127-128
K-2 Independent Auditor's Report on Compliance for Each Major State Program; Required by the State of New Jersey OMB's Circular Letter 15-08.....	129-132
K-3 Schedule of Expenditures of Federal Awards, Schedule A.....	133
K-4 Schedule of Expenditures of State Financial Assistance, Schedule B.....	134
K-5 Notes to the Schedules of Expenditures of Federal Awards and State Financial Assistance.....	135-136
K-6 Schedule of Findings and Questioned Costs	137-140
K-7 Summary Schedule of Prior Audit Findings.....	141

HUDSON ARTS AND SCIENCE CHARTER SCHOOL

33-00 Broadway, Suite 301
Fair Lawn, NJ 0741
Phone: (201) 773-9140 - Fax: (201) 773-9141
School Website: www.ilearnschools.org

January 15, 2025

The Commissioner
New Jersey Department of Education
Riverview Executive Plaza – Bldg. 100
P. O. Box 500
Trenton, New Jersey 08625-0500

Dear Commissioner:

We hereby submit the Annual Comprehensive Financial Report of Hudson Arts and Science Charter School (the “Charter School” or “HASCS”) for the fiscal year ended June 30, 2024.

Responsibility for both the accuracy of the data and completeness and fairness of the presentation, including all disclosures, rests with the management of the Charter School. To the best of our knowledge and belief, the data presented in this report is accurate in all material respects and are reported in a manner designed to fairly present the financial position and result of operations of the various funds of the Charter School. All disclosures necessary to enable the reader to gain an understanding of the Charter School’s financial activities have been included.

Governmental Accounting Standards Board (GASB) requires that management provide a narrative introduction overview and analysis to accompany the basic financial statements in the form of Management’s Discussion and Analysis (MD&A). This letter of transmittal is designed to complement the MD&A and should be read in conjunction with it. Hudson Arts and Science Charter School’s MD&A can be found immediately following the Independent Auditor’s Report.

The Annual Comprehensive Financial Report is presented in four sections: introductory, financial, statistical and single audit. The introductory section includes this transmittal letter, the Charter School’s organizational chart and a list of principal officials. The financial section includes the independent auditor’s report, management’s discussion and analysis (MD&S) and the basic financial statements including the Charter School-wide financial statements presented in conformity with Governmental Accounting Standards Board Statement No. 34. The basic financial statements also include individual fund financial statements and required supplemental information (RSI). The statistical section includes selected financial and demographic information, generally presented on a multi-year basis.

New Jersey Department of Education
The Commissioner
Page 2

The Charter School is required to undergo an annual single audit in conformity with the provisions of the *Title 2 U.S. Code of Federal Regulations (CFR) Part 200, Uniform Administrative Requirements, Cost Principles, and Audit Requirements for Federal Awards* (Uniform Guidance), and the New Jersey OMB's Circular 15-08, "*Single Audit Policy for Recipients of Federal Grants, State Grants, and State Aid*." Information related to this single audit, including the auditor's report on internal control and compliance with applicable *laws and regulations* and findings and recommendations are included in the single audit section of this report.

Information related to this single audit, including the auditor's report on internal control and compliance with applicable *laws and regulations* and findings and recommendations are included in the single audit section of this report.

1) Reporting Entity and Its Services

Hudson Arts and Science Charter School is an independent reporting entity within the criteria adopted by the Government Accounting Standards Board (GASB) as established by National Council on Governmental Accounting (NCGA) Statement No. 3. All funds and account groups of the Charter School are included in this report.

The overarching mission of the Charter School is to inspire and empower its students, families and staff with opportunities to successfully shape and transform their lives by becoming successful, lifelong learners who possess the critical-thinking, academic, advocacy, and leadership skills required to continuously open new doors in their lives and the lives of others.

The Charter School is open to all Hudson County students on a space available basis and does not discriminate in its admission policies or practices on the basis of intellectual or athletic ability, measures of achievement or aptitude, status as a handicapped person, proficiency in the English language, or any other basis that would be illegal if used by a charter school.

By the end of 2023-2024 school year, the Charter School had a student enrollment of 836 students. The following details the changes in student enrollment of the school over the last eight years:

1) **Reporting Entity and Its Services** - *continued*

<u>Fiscal Year</u>	<u>Average Student Daily Enrollment</u>	<u>Percentage Change</u>
2023-2024	836	0.48%
2022-2023	832	5.85%
2021-2022	786	3.42%
2020-2021	760	-4.88%
2019-2020	799	14.96%
2018-2019	695	47.25%
2017-2018	472	36.42%
2016-2017	346	0.00%

2) **Economic Condition and Outlook**

The Charter School is located in Jersey City, the second largest municipality in New Jersey with a population of 270,553 according to the United States Department of Commerce's 2017 Census. The City is located on the west side of the Hudson River, directly across from lower Manhattan in New York City, and is part of the major business and industrial concentration spanning the New York-Northern New Jersey Metropolitan area.

The City's land area is 14.9 square miles, including a five-mile long stretch of Hudson River waterfront that has experienced considerable high-rise office tower, residential and multifamily development over the past ten years. The City is connected to New York City by Holland Tunnel and the PATH railroad tubes, and is within ten miles of Newark Liberty International Airport and the container and cargo facilities of Port Newark-Elizabeth.

The City is located in the County of Hudson. The City's size and current development activities cause it to dominate the economy of Hudson County. The City also serves as the seat of the County Government. Of the approximately 314,272 persons employed in the County, approximately 285,533 or 91 % are employed in Jersey City.

The Charter School has completed its 6th year of implementation. During the 2023-2024 School-Year, the school serviced the following number of students per grade:

2) **Economic Condition and Outlook** - *continued*

<u>Grade</u>	<u>Students</u>
Kindergarten	91
1	91
2	113
3	116
4	106
5	96
6	89
7	69
8	65
	<u>836</u>

Growth

During the year ended June 30, 2024, the Charter School enrolled 836 students in kindergarten through eighth grade for the 2023-2024 school year. The Charter School offers a safe learning environment for students, causing them to look forward to coming to school each day to learn. Staff continue to build relationships with students and parents consistent with the Charter School's ongoing theme of community. In turn, parents believe in the Charter School and trust that the staff are committed to developing their children to be productive citizens in the 21st century.

It is the goal of the Board of Trustees and staff to move the Charter School to an even higher level, understanding that this move will be a continuous process. They are confident that the Charter School will soon be recognized by the state as a star school.

3) **Major Initiatives**

Hudson Arts and Science Charter School aims to provide the ideal environment for the intellectual and social development of its students, utilizing the combined effort of students, educators, families, and the community as a whole by providing boundless academic and co-curricular opportunities for individual skills and talents to develop. From the inception of the school, students have been provided a multitude of opportunities extended to them that have guided them on a path to success. Our mission and vision considers the educational goals that the New Jersey Department of Education has established for *all* students.

Our mission and vision is in direct alignment with the Science, Technology, Engineering, Arts, and Math (STEAM) philosophy. STEAM is an interdisciplinary educational philosophy that is strongly grounded in, and supported by, educational research. Through challenging, project-based learning experiences, core competencies are learned and evidenced by students. STEAM challenges our students to not only learn the content standards, but also to apply this new knowledge of 21st century skills and discoveries to tackle evolving real world challenges. The tenets of the Hudson ASCS mission statement focus on high academic achievement, to be supported by digital literacy and a variety of co-curricular activities, provided in healthy environment that encourages mutual respect and social responsibility, supported by the efforts of students, teachers, families, and the school community/community at large. Within the academic framework, the following explains key design elements and evidence of innovative practices:

1. ***Academic Achievement*** - concentration is placed on providing a multidimensional curriculum, research-based "best practices" instructional strategies, and student/program assessments. Literacy objectives within the CCSS must be met to better prepare students for PARCC assessments, college acceptance, and workforce readiness. Summary writing, analysis of rich and varied literature and non-fiction text, critical research skills, and opinions supported by text-based evidence are the cornerstone elements of the CCSS. In mathematics, lessons are aligned to the CCSS and the content prioritized and supported with online programs for student instruction and assignments. Teachers and students have access to rich, CCSS-aligned, engaging content, and embedded assessments with instant data.

2. ***Digital Learning Environment*** - concentration is placed on classroom organization, integration of technology, teacher development, and effective instructional programs. This allows the district to provide the most relevant, research-based educational experience to our students. The design of the program currently embraces technological literacy and integration, and in the absence of these resources, curricula cannot be delivered as designed. The rigors of the *New Jersey Student Learning Standards* coupled with the next generation digital assessments require us to adjust both the method and mode of instruction to prepare our students for college and careers. The design of the program currently embraces technological literacy and integration; in the absence of technological resources, curricula cannot be delivered as designed. Student assessment data is used to evidence student growth as a result, in part, of digital instruction.

3. ***Co-curricular Programs*** - concentration is placed on academic and non-academic programs that are designed to meet the needs of the *whole child* (academically, socially and emotionally). Hudson Arts and Science Charter School has a vibrant arts education model, which includes multiple performances including full-length theatrical productions, concerts, cultural dances and festivals. The school is often the host location for a variety of educational presentations, educational guest speakers, science fairs and Olympiads, and math competitions. Additionally, the district participates with its sister schools, Bergen ASCS, Passaic ASCS, and Paterson ASCS in an annual summer learning institute, whereby all instructional staff come together in the form of a professional learning community in order to explore best practices in education.

4. ***Community Involvement*** - concentration is placed on parent programs, community outreach, and fostering school, family and community collaboration/involvement. The students of Hudson ASCS are afforded the benefits of partnerships currently established with local universities, businesses, and community leaders. Hudson ASCS recognizes a school as an anchor in a community; we believe the school is the anchor that this community needs. All children deserve the opportunity to be educated in a rich, nurturing environment that promotes inquiry-based learning and innovation in an equitable, culturally-sensitive atmosphere.

Hudson ASCS believes that family involvement is an integral component of our school culture. Our objective is to continue fostering close and positive relationships along with constant communication between school, family, and community. Our Parent-Teacher Organization (PTO) is a committee that maintains a strong presence at the school, and is vital to enriching the experience of students. The PTO makes the purchase of sports equipment, musical instruments, yearbooks, and classroom materials a reality for our Charter School. Additionally, the PTO organizes fundraisers to defray the cost of field trips for the students.

In the 2023-2024 academic year, Hudson ASCS reached out to both the parents and the community with myriad programs and activities to enhance the experience of the students and school community as a whole. A selection of these activities is provided below. Hudson ASCS believes that family involvement is an integral component of our school culture. Our objective is to continue fostering close and positive relationships and constant communication between school, family and community. PTO members 2022-2023 school year in order to ensure a successful joining of parent/family community with the school.

- BACK-TO-SCHOOL NIGHT
- Patriots Day-9/11 Memorial
- HISPANIC HERITAGE MONTH CELEBRATION
- Week of Respect
- Fire Truck/Firehouse Visit
- GRANDPARENT'S NIGHT
- Violence Awareness
- HALLOWEEN PARADE
- Veteran's Day

- PARENT/TEACHER CONFERENCES
- HUDSON ASCS AWARDS CEREMONIES
- HERITAGE MONTH
- THANKSGIVING DINNER/FOOD DRIVE
- VIRTUAL CONCERTS
- SCHOOL CHOICE WEEK
- BLACK HISTORY MONTH CELEBRATION
- Read Across America
- Valentine's Day Celebration
- 100th Day of School
- St. Patrick's Day Zoom
- Women's History Month
- School Wide Spirit Day Virtual Zoom Dance Party
- Virtual ART Gallery & SPRING Talent Show
- CINCO DE MAYO CELEBRATION
- National Honor Society Virtual Induction Ceremony
- Virtual End of Year Activities
- Polar Express Party
- Parent Conferences
- Kindergarten Graduation
- 8th Grade GRADUATION
- Senior Prom
- Sophomore Zoom Party
- College Essay Writing Workshop
- Senior Awards Dinner
- Inaugural Commencement Ceremony
- Chuck E Cheese Fundraiser
- BINGO NIGHT
- SNACKIn in the USA FUNDRAISER
- BOOK FAIR
- VALENTINE'S DAY Candy Grams SALE
- CONCESSION STANDS
- Hershey Candy Fundraiser
- Bake Sales
- Movie Night

PARTNERSHIP PROGRAMS

Hudson ASCS has partnered with the organizations and institutions of higher learning listed below in order to improve teaching and learning across school campuses.

Rutgers University

In collaboration with Rutgers University, Hudson ASCS High participated in the School Systems Improvement Project. This grant enabled school administrators and the school's Master Mentor Teacher to utilize an evaluation instrument that is highly specific and quantitative. Teachers received 3 formal CSS-O reports throughout the year. School administrators and teachers each completed 3 CSS-T and CSS-O forms, respectively. Each took approximately 30 minutes in length.

Grand Canyon University

Through our partnership with Grand Canyon University, school administrators completed online courses in order to obtain supervisory certification. Tuition costs were reduced due to this partnership. 2 school administrators utilized this partnership in order to further their education.

Ramapo College

Hudson ASCS coordinated and oversaw the Clinical Experience for the teachers from the Teacher Education program that will be placed on Hudson ASCS campuses. Through our partnership, students of Ramapo College participated in Student Teaching Internships, practicum, and observations at Hudson ASCS.

Fairleigh Dickinson University

Founded in 1984, the Middle College program is now affiliated with more than 100 high schools throughout New Jersey, including Hudson ASCS. The university's Faculty Advisory Committee reviews submitted curricula and high school staff members for inclusion in the program. FDU's Middle College program gives college-bound juniors and seniors the opportunity to experience university-style learning before they graduate high school. Qualifying students are high school juniors and seniors in advanced and honors sections in subjects such as literature, science, art, mathematics and other courses.

Fair Lawn Chamber of Commerce

Acted as a resource for governmental assistance especially for those impacted by COVID-19. We are a member of the Chamber and as such we do receive their newsletters, we attend chamber meetings and one of our staff members sits as a board member.

SUEZ North America

Extended volunteers to our schools as speakers at our STEM events and other educational programs. Suez staff participates in our events as speakers. They also invite our students to come to their facility while they teach them everything about how water reservoirs work.

Hudson Volunteer Center

Collaborate on volunteer opportunities for staff and students. Provided us with resources on volunteer opportunities/ internships for our students and staff.

Hudson PAC

Brought Opioid Abuse Prevention Program, Chasing the Dragon: The Life of an Opiate Addict. In collaboration with the FBI Newark Citizens Academy Alumni Association, Hackensack Meridian Health, and the Lakeland Bank Foundation, they presented this assembly program that is designed to educate students on the rising issue of Opioids. Speakers and volunteers from Hudson PAC come to our school and/or do virtual presentations on this program. Students in middle schools participate.

Community Food Bank of New Jersey -SNAP ED

Provided “Cooking Matters for Teens (CMT)” which is an evidence-based curriculum that teaches healthy eating skills and builds confidence in shopping and eating healthier on a low budget. It is a series of classes geared for teenagers, ages 11 to 18 years (grades 6-12) focusing on food safety and food preparation education. One course includes 6, 2- hour classes or 12, 1- hour classes split into 2 components, Nutrition Education and Cooking. Speakers and volunteers from CFBNJ teach our middle school students nutrition and healthy foods that they can make on their own.

Hudson County Workforce Development Board

Provided assistance in recruiting transitioning workers who would like to go into teaching. Held an information session where our staff delivered a presentation about the different pathways to a teaching career. The workforce development team disseminated the information to all their contacts.

SPAN Advocacy

Provided the “Parents as Champions for Healthy Schools” 10-hour free training program designed to educate parents about the importance of student health for academic achievement and life success, provide knowledge and skills needed to advocate for healthy schools, and help parents develop an action plan for a project to promote a healthy school environment. This program engaged our parents in meaningful advocacy. As part of the training, parents and the school will receive a grant that will help their school promote a healthy school environment.

New Jersey Public Charter Schools Association

As a member, we receive resources and information on tools and best practices in building a quality public charter school. It also trains and engages our parents to take an active role in their children’s education. As a member, our parents have attended 4 training sessions on how to take an active role in their children’s education. Staff also participate in some capacity building events they offer.

4) Internal Accounting Controls

Management of the Charter School is responsible for establishing and maintaining internal control designed to ensure the assets of the Charter School are protected from loss, theft or misuse and to ensure that adequate accounting data are compiled to allow for the preparation of financial statements in conformity with generally accepted accounting principles (GAAP). The system of internal control is designed to provide reasonable, but not absolute, assurance that these objectives are met. The concept of reasonable assurance recognizes that: (1) the cost of a control should not exceed the benefits likely to be derived; and (2) the valuation of costs and benefits requires estimates and judgments by management.

As a recipient of federal awards and state financial assistance, the Charter School also is responsible for ensuring that adequate system of internal controls is in place to ensure compliance with applicable laws and regulations related to those programs. This system of internal control is also subject to periodic evaluation by the Charter School’s management. As part of the Charter School’s single audit described earlier, tests are made to determine the adequacy of the system of internal controls, including that portion related to federal awards and state financial assistance programs, as well as to determine that the Charter School has complied with applicable laws and regulations.

5) **Budgetary Controls**

In addition to internal accounting controls, the Charter School maintains budgetary controls. The objective of these budgetary controls is to ensure compliance with the statutory requirements of charter school budgets. Annual appropriated budgets are adopted for general and special revenue funds. The final budget amount, as amended for the fiscal year is reflected in the financial section. An encumbrance accounting system is used to record outstanding purchase commitments on a line item basis. Open encumbrances at year end are either canceled or are included as re-appropriations of fund balance in the subsequent year.

During the 2023-2024 fiscal school, the Charter School continued its efforts to improve its audit status and operational processes and procedures, correcting deficiencies identified in previous audits and reviews and on maintaining general compliance with sound fiscal practices.

6) **Accounting System and Report**

The Charter School's accounting records reflect generally accepted accounting principles (GAAP), as promulgated by the Governmental Accounting Standards Board (GASB). The accounting records also reflect New Jersey State Statute (N.J.S.A 18:4-14) that requires a uniform system of double-entry bookkeeping consistent with the GAAP established by GASB for us in all school districts and charter school. The accounting system is organized on the basis of funds in accordance with the Uniform Charter of Accounts (Handbook 2R2) for New Jersey Public Schools. These funds are explained in "Notes to the Financial Statements", Note 1.

7) **Financial Statement Information at Fiscal Year-End**

As demonstrated by the various statements and schedules included in the financial section of this report, the Charter School continues to meet its responsibility for sound financial management. The following schedule presents a summary of the General Fund and Special Revenue Fund for the fiscal year ended June 30, 2024 fiscal year:

Summary of the General Fund and Special Revenue Fund				
Revenue	2024	2023	Increase/ (decrease)	% Change
Local sources	\$ 8,024,736	\$ 8,244,566	\$ (219,830)	-2.67%
State sources	10,671,707	9,247,010	1,424,697	15.41%
Federal sources	975,382	1,065,846	(90,464)	-8.49%
	<u>\$ 19,671,825</u>	<u>\$ 18,557,422</u>	<u>\$ 1,114,403</u>	<u>6.01%</u>

The Charter School experienced an increase in revenue of about 6.01% which was due to an increase in state aid.

The following schedule presents a summary of General Fund and Special Revenue Fund expenditures for the fiscal year ended June 30, 2024:

Summary of the General Fund, Special Revenue Fund,				
Expenditures	2024	2023	Increase/ (decrease)	% Change
Instruction	\$ 6,574,670	\$ 5,411,718	\$ 1,162,952	21.49%
Administrative	6,550,949	4,869,722	1,681,227	34.52%
Support	3,408,143	4,012,158	(604,015)	-15.05%
Capital outlay	211,479	494,862	(283,383)	-57.27%
	<u>\$ 16,745,241</u>	<u>\$ 14,788,460</u>	<u>\$ 1,956,781</u>	<u>13.23%</u>

The Charter School's expenditures increased by about 13.23% over last year's – an increase due to the significant COVID-19 related spending.

8) Cash Management

The investment policy of the Charter School is guided in large part by state statute as detailed in "Notes to the Financial Statements". The Charter School has adopted a cash management plan, which requires it to deposit public funds in public depositories protected from loss under the provision of the Governmental Unit Deposit Protection Act ("GUDPA"). GUDPA was enacted in 1970 to protect Governmental Units from loss of funds on deposit with a failed banking institution in New Jersey. The law requires governmental units to deposit public funds in public depositories located in New Jersey, where the funds are secured in accordance with the Act.

9) Risk Management

The Board carries various forms of insurance, including but not limited to general liability and comprehensive/collision, hazard and theft insurance on property and contents, fidelity bonds and worker's compensation.

10) **Other Information**

Independent Audit

State statute requires an annual audit by independent Certified Public Accountants or registered Municipal Accountants. The Charter School appointed the accounting firm of Olugbenga Olabintan, CPA. In addition to meeting the requirements set forth in state statutes, the audit also was designed to meet the requirements of *Title 2 U.S. Code of Federal Regulations (CFR) Part 200, Uniform Administrative Requirements, Cost Principles, and Audit Requirements for Federal Awards* (Uniform Guidance) and New Jersey OMB Circular Letter 15-08 “*Single Audit Policy for Recipients of Federal Grants, State Grants, and State Aid*”.

The auditor’s report on the basic financial statements is included in the financial section of this report. The auditor’s reports related specifically to the single audit are included in the single audit section of this report.

11) **Acknowledgments**

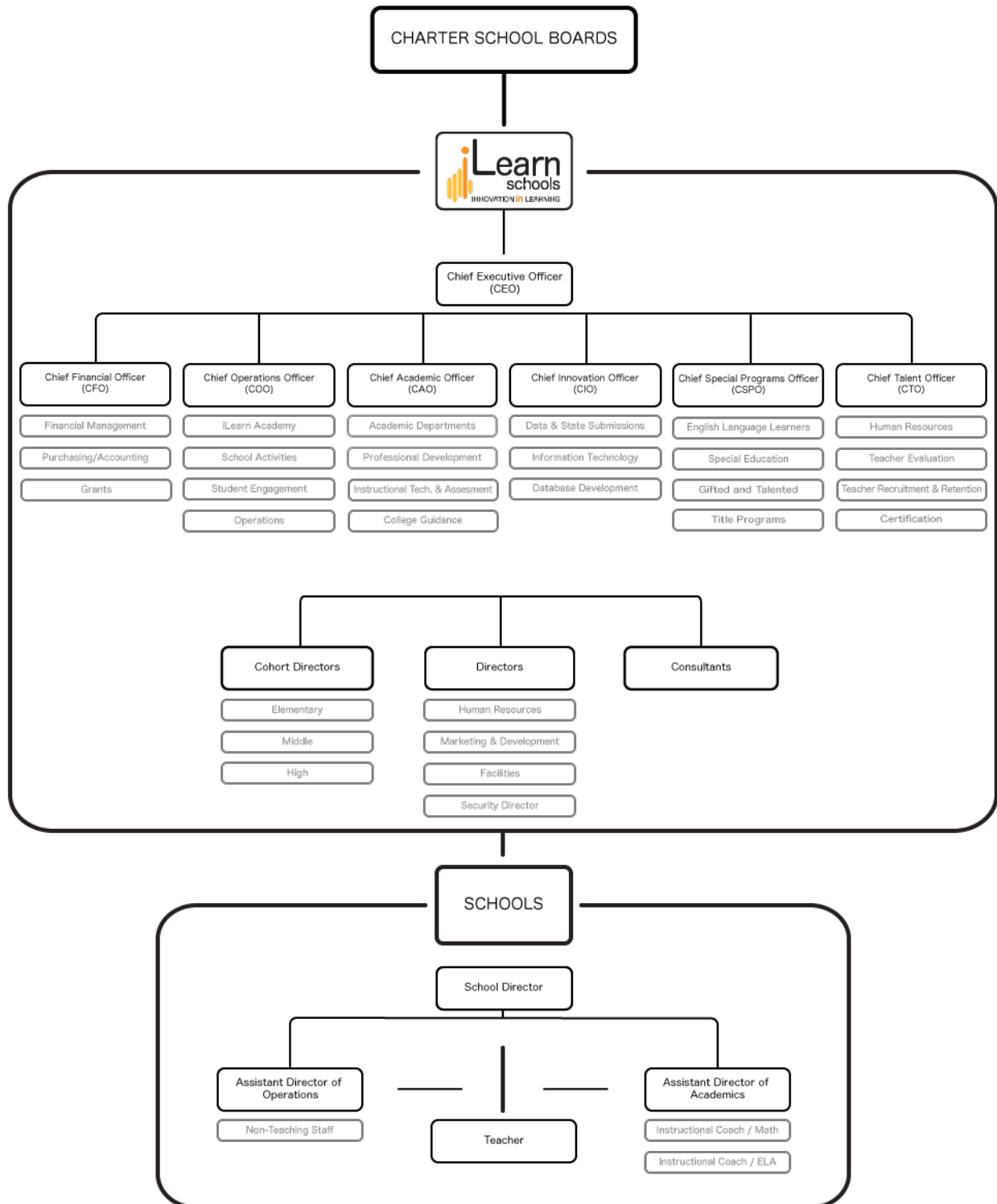
A note of appreciation is extended to the Finance Committee of the Charter School for their ongoing support and commitment to fiscal integrity and to Hudson Arts and Science Charter School Board of Trustees for their selfless dedication to improving student achievement.

A special note of appreciation is extended to the Business Office and to all of the business operations staff members for their untiring efforts to improve processes, procedures and audit outcomes. Their contributions in support of the students and staff of Hudson Arts and Science Charter School are truly noteworthy. The preparation of this report could not have been accomplished without the efficient and dedicated services of our financial, accounting and administrative staff.

Respectively submitted

A handwritten signature in black ink, appearing to read 'Mustafa Coban', written in a cursive style.

Mustafa Coban
School Business Administrator/Board Secretary



HUDSON ARTS AND SCIENCE CHARTER SCHOOL

Roster of Trustees and Officers

June 30, 2024

Members of Board of Trustees

Name

Haderson Rivera	President
Alejandina Banch-Almodovar	Vice President
Jennifer Yashiro	Trustee
Beatriz Rodriguez	Trustee
Lori Manning	Trustee
Engin Akhoroz	Trustee
Shadene Chambers	Trustee

Executive Board

Nihat Guvercin	Chief School Administrator
Mustafa Coban	School Business Administrator/Board Secretary
Christopher Lessard	Treasurer

HUDSON ARTS AND SCIENCE CHARTER SCHOOL

Consultants and Advisor

Independent Auditors

Olugbenga Olabintan
Certified Public Accountant/Consultant
137 Camden Street, Suite # 3
Newark, NJ 07103

Attorneys At Law

Hope R. Blackburn, Partner
Busch Law Group LLC
450 Main Street
Metuchen, NJ 08840

Official Depository

Provident Bank
Corporate Office
100 Wood Avenue South
Iselin, NJ 08830

Financial Section

Olugbenga Olabintan

Certified Public Accountant/Consultant

137 Camden Street, Suite #3
Newark, NJ 07103

Tel: (201) 230-7518
Fax: (973) 368-8268
E-mail: oolabintan@aol.com

Independent Auditors' Report

The Honorable President and
Members of the Board of Trustees
Hudson Arts and Science Charter School
Jersey City, New Jersey
County of Hudson

Report on the Audit of Financial Statements

Opinion

We have audited the accompanying financial statements of the governmental activities, the business-type activities, each major fund and the aggregate remaining fund information of Hudson Arts and Science Charter School, in the County of Hudson, State of New Jersey (the "Charter School") as of and for the fiscal year ended June 30, 2024, and the related notes to the financial statements, which collectively comprise the Charter School's basic financial statements as listed in the table of contents.

In our opinion, the accompanying financial statements referred to above present fairly, in all material respects, the respective financial position of the governmental activities of the Charter School as of June 30, 2024, and the respective changes in net position and cash flows for the year then ended in accordance with accounting principles generally accepted in the United States of America.

Basis for Opinion

We conducted our audit in accordance with auditing standards generally accepted in the United States of America, the standards applicable to financial audits contained in *Government Auditing Standards*, issued by the Comptroller General of the United States and the audit requirements prescribed by the *Office of School Finance, Department of Education, State of New Jersey*. Our responsibilities under those standards are further described in the Auditor's Responsibilities for the Audit of the Financial Statements section of our report. We are required to be independent of the Charter School and to meet our other ethical responsibilities, in accordance with the relevant ethical requirements relating to our audit. We believe that the audit evidence we have obtained is sufficient and appropriate to provide a basis for our audit opinions.

Responsibilities of Management for the Financial Statements

Management is responsible for the preparation and fair presentation of the financial statements in accordance with accounting principles generally accepted in the United States of America; and for the design, implementation, and maintenance of internal control relevant to the preparation and fair presentation of financial statements that are free from material misstatements, whether due to fraud or error.

In preparing the financial statements, management is required to evaluate whether there are conditions or events, considered in the aggregate, that raise substantial doubt about the Charter School's ability to continue as a going concern for twelve months beyond the financial statement date, including any currently known information that may raise substantial doubt shortly thereafter.

Auditor's Responsibilities for the Audit of the Financial Statements

Our objectives are to obtain reasonable assurance about whether the financial statements as a whole are free from material misstatement, whether due to fraud or error, and to issue an auditor's report that includes our opinion. Reasonable assurance is a high level of assurance but is not absolute assurance and therefore is not a guarantee that an audit conducted in accordance with generally accepted auditing standards (GAAS), *Government Auditing Standards* and audit requirements prescribed by the Office of School Finance, Department of Education, State of New Jersey, will always detect a material misstatement when it exists. The risk of not detecting a material misstatement resulting from fraud is higher than for one resulting from error, as fraud may involve collusion, forgery, intentional omissions, misrepresentations, or the override of internal control. Misstatements are considered material if there is a substantial likelihood that, individually or in the aggregate, they would influence the judgment made by a reasonable user based on the financial statements.

In performing an audit in accordance with generally accepted auditing standards, Government Auditing Standards and audit requirements prescribed by the Office of School Finance, Department of Education, State of New Jersey, we:

- Exercise professional judgement and maintain professional skepticism throughout the audit.
- Identify and assess the risks of material misstatement of the financial statements, whether due to fraud or error, and design and perform audit procedures responsive to those risks. Such procedures include examining, on a test basis, evidence regarding the amounts and disclosures in the financial statements.
- Obtain an understanding of internal control relevant to the audit in order to design audit procedures that are appropriate in the circumstances, but not for the purpose of expressing an opinion on the effectiveness of the Charter School, Inc.'s internal control. Accordingly, no such opinion is expressed.
- Evaluate the appropriateness of accounting policies used and the reasonableness of significant accounting estimates made by management, as well as evaluate the overall presentation of the financial statements.
- Conclude whether, in our judgment, there are conditions or events, considered in the aggregate, that raise substantial doubt about the Charter School, Inc.'s ability to continue as a going concern for a reasonable period of time.

We are required to communicate with those charged with governance regarding, among other matters, the planned scope and timing of the audit, significant audit findings, and certain internal control-related matters that we identified during the audit.

Other Matters

Required Supplementary Information

Accounting principles generally accepted in the United States of America require that the management's discussion and analysis, budgetary comparison information, pension information and other postemployment benefits information be presented to supplement the basic financial statements. Such information is the responsibility of management and although not a part of the basic financial statements, is required by the Governmental Accounting Standards Board who considers it to be an essential part of financial reporting for placing the basic financial statements in an appropriate operational, economic, or historical context. We have applied certain limited procedures to the required supplementary information in accordance with auditing standards generally accepted in the United States of America, which consisted of inquiries of management about the methods of preparing the information and comparing the information for consistency with management's responses to our inquiries, the basic financial statements, and other knowledge we obtained during our audit of the basic financial statements. We do not express an opinion or provide any assurance on the information because the limited procedures do not provide us with sufficient evidence to express an opinion or provide any assurance.

Supplementary and Other Information

Our audit was conducted for the purpose of forming opinions on the financial statements that collectively comprise the Charter School's basic financial statements. The accompanying combining and individual nonmajor fund financial statements, schedule of expenditures of federal awards as required by Title 2 U.S. Code of Federal Regulations (CFR) Part 200, Uniform Administrative Requirements, Cost Principles, and Audit Requirements for Federal Awards (Uniform Guidance) and schedule of expenditures of state financial assistance as required by New Jersey OMB Circular 15-08, Single Audit Policy for Recipients of Federal Grants, State Grants and State Aid, are presented for purposes of additional analysis and are not a required part of the basic financial statements of the Charter School. Such information is the responsibility of management and was derived from and relate directly to the underlying accounting and other records used to prepare the basic financial statements. The information has been subjected to the auditing procedures applied in the audit of the basic financial statements and certain additional procedures, including comparing and reconciling such information directly to the underlying accounting and other records used to prepare the basic financial statements or to the basic financial statements themselves, and other additional procedures in accordance with auditing standards generally accepted in the United States of America. In our opinion, the combining and individual nonmajor fund financial statements, schedules of expenditures of federal awards and state financial assistance are fairly stated in all material respects in relation to the basic financial statements as a whole.

Other Information

Management is responsible for the other information included in the annual report. The other information comprises the introductory section, financial schedules and statistical section but does not include the basic financial statements and our auditor's report thereon. Our opinions on the basic financial statements do not cover the other information, and we do not express an opinion or any form of assurance thereon.

In connection with our audit of the basic financial statements, our responsibility is to read the other information and consider whether a material inconsistency exists between the other information and the financial statements, or the other information otherwise appears to be materially misstated. If, based on the work performed, we conclude that an uncorrected material misstatement of the other information exists, we are required to describe it in our report.

Other Reporting Required by Government Auditing Standards

In accordance with *Government Auditing Standards*, we have also issued our report dated January 15, 2025 on our consideration of the Charter School's internal control over financial reporting and on our tests of its compliance with certain provisions of laws, regulations, contracts, and grant agreements and other matters. The purpose of that report is solely to describe the scope of our testing of internal control over financial reporting and compliance and the results of that testing, and not to provide an opinion on the effectiveness of the Charter School's internal control over financial reporting or on compliance. That report is an integral part of an audit performed in accordance with Government Auditing Standards in considering the Charter School's internal control over financial reporting and compliance.

Olugbenga Olabintan, CPA

January 15, 2025
Newark, New Jersey

OLUGBENGA OLABINTAN
Certified Public Accountant/Consultant

A handwritten signature in black ink, appearing to read 'Olugbenga Olabintan', with a stylized flourish at the end.

Olugbenga Olabintan, CPA
Licensed Public School Accountant
No. 20CS00230200

Required Supplementary Information

Part I

Management's Discussion and Analysis

The Management's Discussion and Analysis (MD&A) provides an analysis of the Charter School's overall financial position and results of operations.

HUDSON ARTS AND SCIENCE CHARTER SCHOOL
Management's Discussion and Analysis
Year Ended June 30, 2024
(Unaudited)

Introduction

This section of Hudson Arts and Science Charter School's annual financial report presents our discussion and analysis of the Charter School's financial performance and provides an overview of the Charter School's financial activities for the fiscal year ended June 30, 2024. It should be read in conjunction with the transmittal letter at the front of this report and the Charter School's financial statements, which follow this section.

Management's Discussion and Analysis (MD&A) is an element of Required Supplementary Information specified in the Governmental Accounting Standard Board's (GASB) Statement No. 34, *Basic Financial Statement – and Management's Discussion and Analysis- for State and Local Governments*. Certain comparative information between the current fiscal year and the prior fiscal year is required to be presented in the MD&A.

Financial Highlights

Key financial highlights for fiscal year 2024 are as follows:

- Net position of governmental activities ended the fiscal year with \$11,857,123. Net position of business-type activities, which represent food service operations ended the fiscal year with \$218,759.
- General revenues accounted for \$18,608,338 in revenue or 91 percent of total revenues of \$20,341,424. Program specific revenues, in the form of charges for services, grants, and contributions accounted for \$1,733,086 or 9 percent of total revenues.
- The Charter School had \$17,253,313 in expenses related to governmental activities; \$1,062,799 of these expenses is offset by operating grants and contributions. General revenues (primarily State aid) of \$18,608,338 helped to provide for the balance of these programs.
- The General Fund reported fund surplus at June 30, 2024, of \$12,985,889.

HUDSON ARTS AND SCIENCE CHARTER SCHOOL
Management's Discussion and Analysis
Year Ended June 30, 2024
(Unaudited)

Using the Basic Financial Statements

This annual report consists of a series of basic financial statements, required supplementary information, other supplementary information and notes to those statements and information.

The report is organized so the reader can understand Hudson Arts and Science Charter School as a financial whole, or as an entire operating entity. The first two basic financial Statements, the Statement of Net Position and the Statement of Activities, are governmental-wide financial statements and provide overall information about the activities of the entire Charter School, presenting both an aggregate view of the Charter School's finances and a long-term view of those finances. The remaining basic financial statements are fund financial statements that focus on the individual parts of the government, reporting the Charter School's operation in more detail than the government-wide statements. The fund financial statements also look at the Charter School's most significant funds with all other non-major funds presented in total in a single column. For Hudson Arts and Science Charter School, the General Fund is the most significant fund.

The governmental funds statements tell how general government services were financed in the short-term as well as what remains for future spending.

Proprietary fund statements offer short and long-term financial information about the activities, the government operates like a business, such as food service.

Fiduciary fund statements provide information about financial relationship in which the Charter School acts solely as a trustee or agent for the benefits of others, to whom the resources in question belong.

The financial statements also include notes that explain some of the information in the financial statements and provide more detailed data. The statements are followed by a section of Required Supplementary Information that further explains and supports the information in the financial statements.

Reporting the Charter School as a Whole

Statement of Net Position and Statements of Activities

While this report contains the fund used by the Charter School to provide programs and activities, the view of the Charter School as a whole looks at all financial transactions and asks the question, "how did we do financially during fiscal year 2024?" The statements of Net Position and the Statement of Activities answer this question. These Statements include all the Charter School's assets and liabilities using the accrual basis of accounting similar to the accounting system used by most private sector companies. This basis of accounting takes into account all of the current year's revenues and expenses regardless of when cash was received or paid.

HUDSON ARTS AND SCIENCE CHARTER SCHOOL
Management's Discussion and Analysis
Year Ended June 30, 2024
(Unaudited)

Statement of Net Position and Statement of Activities-continued

These two statements report the Charter School's net position and changes in those assets. This change in net position is important because it identifies whether the financial position of the Charter School has improved or diminished for the Charter School as a whole. The cause of this change may be the result of many factors some financial, some not. Non-financial factors include the property tax base of the School District where the Charter School is located, current educational funding laws in New Jersey, facilities conditions, required educational programs, and other factors. In the Statements of Net Position and the Statements of Activities, the Charter School is divided into two distinct kinds of activities:

Governmental Activities – Most of the Charter School's programs and services are reported here including instructions, extracurricular activities, curriculum, staff development, special education and other support services, operation and maintenance of plant, pupil transportation, health services and general administration.

Business-Type Activity – Services are provided on a charge for goods or services or reimbursement basis to recover the expenses of the goods or services provided. The food service operations/after care programs enterprise fund is reported as a business activity.

Reporting the Charter School's Most Significant Funds

Fund Financial Statements

Fund financial reports provide detailed information about the Charter School's major funds-not the Charter School as a whole. Funds are accounting devices that the Charter School uses to keep track of a multitude of financial transactions. The Charter School's only major governmental fund is the General Fund.

Governmental Funds

Most of the Charter School's activities are reported in governmental funds, which focus on how monies flow into and out of those funds and the balances left at fiscal year-end for spending in future periods. These funds are reported using an accounting method called modified accrual accounting. Which measures cash and all other financial assets that can readily be converted to cash. The governmental fund statement provides a detailed short-term view of the Charter School's general government operations and the basic services it provides. Governmental fund information helps determine whether there are more or less financial resources that can be spent in the near future to finance educational programs. The relationship, or differences, between governmental activities reported in the Statement of Net Position and the Statement of Activities and the governmental funds are reconciled in the financial statements.

HUDSON ARTS AND SCIENCE CHARTER SCHOOL
Management's Discussion and Analysis
Year Ended June 30, 2024
(Unaudited)

Enterprise Fund

The enterprise fund uses the same basis of accounting as business-type activities; therefore, these statements are essentially the same.

The Charter School as a Whole

The perspective of the Statement of Net Position is of the Charter School as a whole. Net position may serve over time as useful indicator of a government's financial position. In the case of the Charter School, assets exceeded liabilities by \$12,075,882 at the close of 2024. The following table provides a summary of net position relating to the Charter School's governmental and business type activities:

	Governmental Activities		Business Type Activities		Total	
	2024	2023	2024	2023	2024	2023
Assets and deferred outflows of resources						
Current assets	\$ 13,434,295	\$ 10,405,879	\$ 218,759	\$ 285,880	\$ 13,653,054	\$ 10,691,759
Capital assets, net	1,658,081	1,751,012	-	-	1,658,081	1,751,012
Right-of-use lease assets, net	6,421,091	7,428,283	-	-	6,421,091	7,428,283
Deferred outflows of resources	904,383	1,437,108	-	-	904,383	1,437,108
Total assets and deferred outflows of resources	22,417,850	21,022,282	218,759	285,880	22,636,609	21,308,162
Liabilities and deferred outflows of resources:						
Current liabilities	444,519	342,687	-	1,635	444,519	344,322
Long term liabilities	2,504,591	2,399,449	-	-	2,504,591	2,399,449
Lease liabilities	7,361,268	8,348,906	-	-	7,361,268	8,348,906
Deferred outflows of resources	250,349	491,941	-	-	250,349	491,941
Total liabilities and deferred inflows of resources	10,560,727	11,582,983	-	1,635	10,560,727	11,584,618
Net position						
Invested in						
Capital assets						
(net of related debt)	1,658,081	1,751,012	-	-	1,658,081	1,751,012
Right-of-assets - net of related debt	(940,177)	(920,623)	-	-	(940,177)	(920,623)
Restricted	3,887	3,199	-	-	3,887	3,199
Other purposes	-	-	-	-	-	-
Unrestricted	11,135,332	8,605,711	218,759	284,245	11,354,091	8,889,956
Total net position	\$ 11,857,123	\$ 9,439,299	\$ 218,759	\$ 284,245	\$ 12,075,882	\$ 9,723,544

HUDSON ARTS AND SCIENCE CHARTER SCHOOL
Management's Discussion and Analysis
Year Ended June 30, 2024
(Unaudited)

The largest portion of the Charter School's net position is its current assets. The Charter School uses these current assets to provide services.

The total net position of the Charter School increased by \$3,464,225 during the current fiscal year ended June 30, 2024. The majority of the increase is primarily attributable to a surplus of \$3,573,845 in the Governmental Activities.

The table that follows reflects the change in net position for fiscal year 2024.

	Governmental Activities		Business Type Activities		Total	
	2024	2023	2024	2023	2024	2023
Revenues						
Program revenues:						
Charge for services	\$0	\$0	\$148,453	\$143,046	\$148,453	\$143,046
Operating grants and contributions	1,062,799	1,273,481	521,834	504,980	1,584,633	1,778,461
Total program revenues	1,062,799	1,273,481	670,287	648,026	1,733,086	1,921,507
General revenues:						
Local aid	7,318,203	6,906,403	-	-	7,318,203	6,906,403
Federal and state aid	10,615,920	9,053,197	-	-	10,615,920	9,053,197
Miscellaneous	674,215	1,325,056	-	-	674,215	1,325,056
Transfers	-	-	-	-	-	-
Total general revenues	18,608,338	17,284,656	-	-	18,608,338	17,284,656
Total revenues	19,671,137	18,558,137	670,287	648,026	20,341,424	19,206,163
Expenses:						
Instructions	6,574,670	5,411,718	-	-	6,574,670	5,411,718
Administrative & support services	9,367,041	8,246,695	-	-	9,367,041	8,246,695
Unallocated depreciation/ capital outlay	304,410	318,687	-	-	304,410	318,687
Unallocated amortization	1,007,192	1,007,192	-	-	1,007,192	1,007,192
Food service	-	-	651,131	677,450	651,131	677,450
After school programs	-	-	84,642	80,196	84,642	80,196
Total expenses	17,253,313	14,984,292	735,773	757,646	17,989,086	15,741,938
Change in net position	\$ 2,417,824	\$ 3,573,845	\$ (65,486)	\$ (109,620)	\$ 2,352,338	\$ 3,464,225

Governmental Activities

The Statement of Activities reflects the cost of program services and the charges for services and operating grants and contributions offsetting those services. The table below, for government activities, indicates the total cost of services and the net cost of services. It identifies the cost of these services supported by unrestricted state entitlements for the fiscal year ended June 30, 2024.

HUDSON ARTS AND SCIENCE CHARTER SCHOOL
Management's Discussion and Analysis
Year Ended June 30, 2024
(Unaudited)

Governmental Activities - *continued*

	<u>Total Cost of Services</u>	<u>Net Cost of Services</u>
Instruction	\$ 6,574,670	\$ 5,764,924
Administrative & support services	9,367,041	9,169,775
Unallocated depreciation and amortization	1,311,602	1,255,815
Total Expenses	<u>\$ 17,253,313</u>	<u>\$ 16,190,514</u>

Business-Type Activity

The business-type activity of the Charter School consists of the food service operation and the after-school programs. These programs had revenues of \$670,287 (including a board contribution of \$-0-) and operating expenses of \$735,773 for fiscal year 2024. The Charter School intended to have food services be self-operating without assistance from the General Fund.

The Charter School's Funds

The Charter School's governmental funds are accounted for using the modified accrual basis of accounting. All governmental funds had revenues of \$19,671,825 and expenditures of \$16,745,241. The positive change in fund balance for the year was \$2,926,584. The cumulative surplus fund balance from the prior years was \$10,063,192.

The Charter School's budget is prepared according to New Jersey law and is based on accounting for certain transactions on a basis of cash receipts, disbursements, and encumbrances. The most significant budgeted fund is the general fund.

During the course of fiscal 2024, the Charter School amended its General Fund budget as needed. The Charter School uses state-aid and other revenue-based budget. The budgeting systems are designed to tightly control total budget, but provide flexibility for Charter School's management teams.

For the General Fund, final budgeted revenues were \$16,288,942, which included a local tax levy of \$7,318,203. Expenditures and other financing uses were budgeted at \$14,118,196. The Charter School anticipated budgeted fund balance of \$12,230,739 in its 2023-2024 budget year.

HUDSON ARTS AND SCIENCE CHARTER SCHOOL
Management's Discussion and Analysis
Year Ended June 30, 2024
(Unaudited)

The State of New Jersey reimbursed the Charter School \$325,926 during the year ended June 30, 2024 for the employer's share of social security contributions for TPAF members. Also, the State paid \$1,458,912 into the TPAF pension representing on-behalf employer's portion of the TPAF Pension System Contributions, TPAF Post-Retirement Medical Benefits Contributions and TPAF Long Term Disability Insurance Premium Contributions for the Charter School. The unbudgeted amounts were included in both revenues and expenditures.

Capital Assets

At the end of fiscal year 2024, the Charter School had \$1,658,081 invested in capital assets in its governmental activities.

The Charter School's 2024-2025 budget does not anticipate any spending on capital projects.

Long-term debt

The Charter School had \$2,504,591 at June 30, 2024 in net pension liability regarding the Public Employees Retirement System. More detailed information about the Charter School's long term obligations is presented in the notes to the financial statements.

Economic Factors and Next Year's Budget

The State of New Jersey and indeed the entire United States continue to face serious budgetary constraints and a result of the sharp downturn in the economy. These impact the amount of state and federal aids allocated to charter schools. This reality was taken into account when adopting the general fund budget for 2024-2025. Nothing was done to compromise the quality of the programs in place in our Charter School during the regular instructional day. The budget was prepared to ensure that all students have the textbooks, materials, supplies, equipment and programs they need to meet New Jersey's Core Curriculum Content Standards. The budget was adopted with a redirection of funds to maintain the quality of the regular school day.

HUDSON ARTS AND SCIENCE CHARTER SCHOOL
Management's Discussion and Analysis
Year Ended June 30, 2024
(Unaudited)

COVID-19

In December 2019, an outbreak of a novel strain of coronavirus (COVID-19) originated in Wuhan, China and has since spread to other countries, including the U.S. On March 11, 2020, the World Health Organization characterized COVID-19 as a pandemic. In addition, as of March 21, 2020, New Jersey State Governor Phil Murphy ordered the closure of the physical location of every “non-life sustaining” and “non-essential” business for what may be an extended period of time. The Charter School had to close its physical locations. Future potential impacts may include continued disruptions or restrictions on its employees’ ability to work and impairment of its ability to obtain grants and contributions. Though the impact on the Charter School’s operations cannot be reasonably estimated at this date, it is likely that there will be an impact on certain revenue in the General Fund and other state aid and the local tax levy. Nonetheless, the degree of any future impact to the Charter School's operations and finances is difficult to predict due to the dynamic nature of the COVID-19 pandemic and any additional actions that may be taken by governmental and other health care authorities to manage the COVID-19 pandemic.

To date, the overall finances and operations of the Charter School have not been materially adversely affected by the COVID-19 pandemic.

Contacting the Charter School’s Financial Management

This financial report is designed to provide our citizens, taxpayers, investors, and creditors with a general overview of the Charter School’s finances and to reflect the Charter School’s accountability for the monies it receives. Questions about this report or additional financial information needs should be directed to:

HUDSON ARTS AND SCIENCE CHARTER SCHOOL
Business Office, 33-00 Broadway, Suite 301
Fair Lawn, New Jersey 07410
Tel: (201) 773-9140* Fax: (201) 773-9141

Basic Financial Statements

Government-wide Financial Statements

The government-wide financial statements provide a financial overview of the Charter School's operations. These financial statements present the financial position and operating results of all governmental activities and business-type activities as of and for the Year Ended June 30, 2024.

Statement of Net Position

June 30, 2024

	Governmental Activities	Business-type Activities	Total
Assets			
Cash and cash equivalents	\$ 4,951,614	\$ 167,433	\$ 5,119,047
Restricted cash - escrow	75,000	-	75,000
Investments	7,830,972	-	7,830,972
Accounts receivable	499,709	27,021	526,730
Other current assets	77,000	6,391	83,391
Interfund receivables	-	17,914	17,914
Capital assets (net of accumulated depreciation of \$1,410,142)	1,658,081	-	1,658,081
Right-of-use lease asset, net of accumulated amortization of \$6,934,796)	6,421,091	-	6,421,091
Total assets	<u>21,513,467</u>	<u>218,759</u>	<u>21,732,226</u>
Deferred outflows of resources			
Pension deferred outflows	<u>904,383</u>	<u>-</u>	<u>904,383</u>
Total assets and deferred outflows of resources	<u>\$ 22,417,850</u>	<u>\$ 218,759</u>	<u>\$ 22,636,609</u>
Liabilities			
Accounts payable	\$ 93,508	\$ -	\$ 93,508
Intergovernmental payables - state and federal	66,606	-	66,606
Deferred revenue	220,138	-	220,138
Interfunds payables	17,914	-	17,914
Payroll deductions and withholdings	46,353	-	46,353
Net pension liability	2,504,591	-	2,504,591
Lease liabilities	7,361,268	-	7,361,268
Total liabilities	<u>10,310,378</u>	<u>-</u>	<u>10,310,378</u>
Deferred inflows of resources			
Pension deferred inflows	<u>250,349</u>	<u>-</u>	<u>250,349</u>
Total liabilities and deferred inflows of resources	<u>10,560,727</u>	<u>-</u>	<u>10,560,727</u>
Net position			
Invested in capital assets	1,658,081	-	1,658,081
Invested in right-of- assets	(940,177)	-	(940,177)
Restricted - student activity	3,887	-	3,887
Unrestricted, undesignated	11,135,332	218,759	11,354,091
Total net position	<u>11,857,123</u>	<u>218,759</u>	<u>12,075,882</u>
Total liabilities, deferred inflows & net position	<u>\$ 22,417,850</u>	<u>\$ 218,759</u>	<u>\$ 22,636,609</u>

See independent auditor's report and accompanying notes to basic financial statements.

HUDSON ARTS AND SCIENCE CHARTER SCHOOL

A-2

Statement of Activities

Year ended June 30, 2024

Functions/Programs	Expenses	Program Revenues		Net (Expense) Revenue and Changes in Net Position		Totals
		Charges for Services	Operating Grants and Contributions	Governmental Activities	Business-type Activities	
Governmental activities:						
Instruction:						
Regular	\$ 6,574,670	\$ -	\$ 809,746	\$ (5,764,924)	\$ -	\$ (5,764,924)
Administrative & support services:						
	-	-	-	-	-	-
General administration	5,958,898	-	-	(5,958,898)	-	(5,958,898)
Support services	3,408,143	-	197,266	(3,210,877)	-	(3,210,877)
Capital outlay	-	-	55,787	55,787	-	55,787
Unallocated depreciation	304,410	-	-	(304,410)	-	(304,410)
Unallocated amortization	1,007,192	-	-	(1,007,192)	-	(1,007,192)
Total governmental activities	17,253,313	-	1,062,799	(16,190,514)	-	(16,190,514)
Business-type activities:						
						-
Food service	651,131	103,912	521,834	-	(25,385)	(25,385)
After care program	84,642	44,541	-	-	(40,101)	(40,101)
Total business-type activities	735,773	148,453	521,834	-	(65,486)	(65,486)
Total primary government	\$ 17,989,086	\$ 148,453	\$ 1,584,633	(16,190,514)	(65,486)	(16,256,000)
General revenues, transfers and special items:						
Local sources				7,318,203	-	7,318,203
State sources				10,615,920	-	10,615,920
Federal sources				-	-	-
Miscellaneous				674,215	-	674,215
Transfers				-	-	-
Total general revenues, transfers and special item				18,608,338	-	18,608,338
Change in net position				2,417,824	(65,486)	2,352,338
Net position - beginning				9,439,299	284,245	9,723,544
Net position - ending				\$ 11,857,123	\$ 218,759	\$ 12,075,882

See independent auditor's report and accompanying notes to basic financial statements.

Funds Financial Statements

Governmental Funds

HUDSON ARTS AND SCIENCE CHARTER SCHOOL
Governmental Funds

B-1

Balance Sheet

June 30, 2024

	General Fund	Special Revenue Fund	Totals Governmental Funds
Assets			
Cash and cash equivalents	\$ 4,570,219	\$ 381,395	\$ 4,951,614
Restricted cash in escrow	75,000	-	75,000
Investments	7,830,972	-	7,830,972
Accounts receivable:	-	-	-
State	16,206	-	16,206
Federal	-	98,244	98,244
Other	385,259	-	385,259
Other current assets	77,000	-	77,000
Interfund receivable	236,495	-	236,495
Total assets	<u>\$ 13,191,151</u>	<u>\$ 479,639</u>	<u>\$ 13,670,790</u>
Liabilities and Fund Balances			
Interfund payables	\$ -	\$ 254,409	\$ 254,409
Accounts payables	92,303	1,205	93,508
Intergovernmental payables - federal	-	-	-
Intergovernmental payables - state	-	-	-
Intergovernmental payables - other	66,606	-	66,606
Payroll deductions and withholdings	46,353	-	46,353
Deferred revenue	-	220,138	220,138
Total liabilities	<u>205,262</u>	<u>475,752</u>	<u>681,014</u>
Fund balances:			
Restricted - student activity	-	3,887	3,887
Undesignated	12,985,889	-	12,985,889
Total fund balances	<u>12,985,889</u>	<u>3,887</u>	<u>12,989,776</u>
Total liabilities and fund balances	<u>\$ 13,191,151</u>	<u>\$ 479,639</u>	
Amounts reported for governmental activities in the statement of net position (A-1) are different because:			
Capital assets used in governmental activities are not financial resources and therefore are not reported in the funds:			
Cost of capital assets	\$ 3,068,223		
Accumulated depreciation	(1,410,142)		
Cost of capital assets, net of accumulated depreciation	<u>\$ 1,658,081</u>		1,658,081
Deferred Outflows related to pension contributions subsequent to the Net Pension Liability measurement date and other deferred items are not current financial resources and therefore are not reported in the fund statements. (See Note 7)			
			904,383
Deferred Inflows related to pension actuarial gains from experience and differences in actual return and assumed returns and other deferred items are not reported as liabilities in the fund statements. (See Note 7)			
			(250,349)
Long-term liabilities, including Net Pension Liability, are not due and payable in the current period and therefore are not reported as liabilities in the funds (see Note 7)			
			(2,504,591)
Right-to-use assets used in governmental activities are not financial resources and therefore are not reported in the funds (see Note 4):			
Cost of right-to-use assets	\$ 13,355,887		
Accumulated amortization	(6,934,796)		
Cost of right-to-use assets, net of accumulated amortization	<u>\$ 6,421,091</u>		6,421,091
Lease liabilities used in governmental activities are not financial resources and therefore are not reported in the funds (see Note 5).			
			(7,361,268)
Net position of governmental activities - A-1			<u>\$ 11,857,123</u>

See independent auditor's report and accompanying notes to basic financial statements.

HUDSON ARTS AND SCIENCE CHARTER SCHOOL
Governmental Funds

B-2

Statement of Revenues, Expenditures and Changes in Fund Balances
Year ended June 30, 2024

	<u>General Fund</u>	<u>Special Revenue Fund</u>	<u>Total</u>
Revenues:			
Local sources:			
Local tax levy	\$ 7,318,203	\$ -	\$ 7,318,203
Miscellaneous	674,215	32,318	706,533
Total revenues - local sources	<u>7,992,418</u>	<u>32,318</u>	<u>8,024,736</u>
Federal sources	-	975,382	975,382
State sources	8,831,082	55,787	8,886,869
Reimbursed TPAF-Social Security (non-budgeted)	325,926	-	325,926
TPAF pension and post retirement medical and long-term disability	-	-	-
premium benefits on-behalf payments (non-budgeted)	<u>1,458,912</u>	<u>-</u>	<u>1,458,912</u>
Total revenues	<u>18,608,338</u>	<u>1,063,487</u>	<u>19,671,825</u>
 Current expense:			
Instruction	5,764,924	809,746	6,574,670
Administrative	4,766,111	-	4,766,111
Support services	3,210,877	197,266	3,408,143
Capital outlay	155,692	55,787	211,479
Reimbursed and on-behalf payments:	-	-	-
Reimbursed TPAF-Social Security (non-budgeted)	325,926	-	325,926
TPAF pension and post retirement medical	-	-	-
benefits on-behalf payments (non-budgeted)	<u>1,458,912</u>	<u>-</u>	<u>1,458,912</u>
Total expenditures	<u>15,682,442</u>	<u>1,062,799</u>	<u>16,745,241</u>
Excess (deficiency) of revenues over (under) expenditures	2,925,896	688	2,926,584
Other financing sources/(uses):			
Transfer to cover food deficit	-	-	-
Total other financing sources/(uses)	<u>-</u>	<u>-</u>	<u>-</u>
Excess (deficiency) of revenues and other financing sources over (under) expenditures and other financing uses	2,925,896	688	2,926,584
Fund balances, beginning of year	<u>10,059,993</u>	<u>3,199</u>	<u>10,063,192</u>
Fund balances, end of year	<u><u>\$ 12,985,889</u></u>	<u><u>\$ 3,887</u></u>	<u><u>\$ 12,989,776</u></u>

See independent auditor's report and accompanying notes to basic financial statements.

HUDSON ARTS AND SCIENCE CHARTER SCHOOL
Reconciliation of the Statement of Revenues, Expenditures
And Changes in Fund Balances of Governmental Funds
to the Statement of Activities
Year ended June 30, 2024

B-3

Total net change in fund balances - governmental funds (B-2) \$ 2,926,584

Amounts reported for governmental activities in the Statement of Activities (A-2) are different because:

Capital outlays are reported in governmental funds as expenditures. However, in the Statement of Activities, the cost of those assets is allocated over their estimated useful lives as depreciation expense. This is the amount by which capital outlays exceeded depreciation expenses in the period. Additionally, in the Statement of Activities gains or (losses) are recognized upon disposition.

Depreciation expense	\$ (304,410)	
Capital outlays	<u>211,479</u>	(92,931)

Adoption of GASB 87 resulted in an increase in right-to-use lease assets offset by the current year amortization of the right-to-use assets, allocated over the term of the leases

Amortization expense	(1,007,192)
----------------------	-------------

Adoption of GASB 87 resulted in an increase in lease liabilities offset by the current year principal payments on lease liabilities. Principal payments on lease liabilities decrease liabilities in the statement of net position, but are included in the governmental funds as expenses

Principal payments	987,639
--------------------	---------

Pension contributions are reported in governmental funds as expenditures. However, in the statement of activities, the contributions are adjusted for actuarial valuation adjustments, including service and interest costs, administrative costs, investment returns, and experience/assumption. This is the amount by which net pension liability and deferred inflows/outflows related to pension changed during the period

(396,276)

Change in net position of governmental activities (A-2)	\$ 2,417,824
--	---------------------

See independent auditor's report and accompanying notes to basic financial statements.

Proprietary Funds

HUDSON ARTS AND SCIENCE CHARTER SCHOOL
Proprietary Funds

B-4

Statement of Net Position

June 30, 2024

Assets

Current assets:

Cash and cash equivalents	\$ 167,433
Accounts receivable:	-
Federal	23,687
State	1,342
Other	1,992
Inventories	6,391
Interfund receivable - general fund	17,914
Total current assets	<u>\$ 218,759</u>

Noncurrent assets:

Machinery and equipment	54,620
Less accumulated depreciation	<u>(54,620)</u>
Total noncurrent assets	<u>-</u>
Total assets	<u>218,759</u>

Liabilities

Current liabilities:

Interfund payable - general fund	\$ -
Accounts payable	<u>-</u>
Total current liabilities	<u>\$ -</u>

Net position

Unrestricted	218,759
Total net position	<u><u>\$ 218,759</u></u>

See independent auditor's report and accompanying notes to basic financial statements.

HUDSON ARTS AND SCIENCE CHARTER SCHOOL
Proprietary Funds

B-5

Statement of Revenues, Expenditures and Changes in Net Position

Year ended June 30, 2024

Operating revenues:	
Charges for services:	
Daily sales - reimbursable programs	\$ -
Daily sales - nonreimbursable programs	148,453
Miscellaneous revenue	-
Total operating revenues	<u>148,453</u>
Operating expenses:	
Cost of sales - reimbursable programs	575,822
Cost of sales - nonreimbursable programs	-
Salaries	137,452
Employee benefits	-
Professional /technical service	-
Other purchased services	10,010
Supplies and materials	12,256
Depreciation	-
Miscellaneous	233
Total operating expenses	<u>735,773</u>
Operating income (loss)	<u>(587,320)</u>
Nonoperating revenues:	
State sources:	
State School Lunch Program	11,851
State School Lunch Program - NJEIE	5,201
State School Breakfast Program	4,790
State School Breakfast Program - NJEIE	472
Federal sources:	-
National School Lunch Program	355,363
Healthy, Hunger Free Kids Act	8,394
National School Breakfast Program	74,028
After School Snacks	61,735
Total nonoperating revenues	<u>521,834</u>
Net income/(loss) before contributions & transfers	(65,486)
Other financing sources:	
Transfer in/(out) - board contribution	-
	<u>-</u>
Change in net position	(65,486)
Total net position-beginning of year	<u>284,245</u>
Total net position-end of year	<u><u>\$ 218,759</u></u>

See independent auditor's report and accompanying notes to basic financial statements.

HUDSON ARTS AND SCIENCE CHARTER SCHOOL
Proprietary Fund

B-6

Statement of Cash Flows

Year ended June 30, 2024

Cash flows from operating activities

Operating loss	\$ (587,320)
Adjustment to reconcile operating loss to net cash used in operating activities:	
Changes in assets and liabilities:	
Accounts receivable	6,953
Due to/(from) general fund	122,137
Accounts payable	<u>(1,635)</u>
Net cash used in operating activities	<u>(459,865)</u>

Cash flows from noncapital financing activities

Cash received from state reimbursements	22,314
Cash received from federal reimbursements	499,520
Operating subsidies and transfers from other funds	<u>-</u>
Net cash provided by noncapital financing activities	<u>521,834</u>

Cash flows from investing activities

Net decrease in cash and cash equivalents	61,969
Cash and cash equivalents, beginning	105,464
Cash and cash equivalents, ending	<u>\$ 167,433</u>

See independent auditor's report and accompanying notes to basic financial statements.

**Fiduciary Funds
Not Applicable**

Notes to Basic Financial Statements

HUDSON ARTS AND SCIENCE CHARTER SCHOOL
(County of Hudson)
Notes to the Basic Financial Statements
Year Ended June 30, 2024

1 Description of the Charter School and Reporting Entity

Hudson Arts and Science Charter School (the “Charter School” was incorporated in the State of New Jersey in 2015 as a non-for-profit corporation for the purpose of operating and maintaining a public school under a charter granted by the State of New Jersey, which promotes comprehensive educational reform by infusing innovation into the public education system. It is an instrumentality of the State of New Jersey, established to function as an education institution. The Charter School’s Board of Trustees (the Board) is responsible for the fiscal control of the Charter School. A Principal/Chief School Administrator is appointed by Board and is responsible for the administrative control of the Charter School. Under the existing the statutes, the Charter School’s duties and powers include, but not limited to the development and adoption of a school program; the establishment, organization and operation of schools; and the acquisition, maintenance and disposition of school property.

A reporting entity is comprised of the primary government, component units and other organizations that are included to ensure that the financial statements of the Charter School are not misleading. The primary government consists of all funds, departments, boards and agencies that are not legally separate from the Charter School. For the Charter School, this includes general operations, food service and student related activities of the Charter School.

The primary criterion for including activities within the Charter School’s reporting entity, as set forth in Section 2100 of the GASB Codification of Governmental Accounting and Financial Reporting Standards, is the degree of oversight responsibility maintained by the Charter School. Oversight responsibility includes financial interdependency, selection of governing authority, designation of management, and ability to significantly influence operations and accountability for fiscal matters. The combined financial statements include all funds of the Charter School over which the Board exercises operating control. Based on the aforementioned criteria, the Charter School has no component units to be included in the reporting entity. Further, the Charter School is not includable in any other reporting entity on the basis of such criteria.

Hudson Arts and Science Charter School Board of Trustees also has broad financial responsibilities, including the approval of the annual budget and the establishment of a system of accounting and budgetary controls.

Its mission is to establish a character school to serve as a neighborhood resource and as a model for other similar schools. Hudson Arts and Science Charter School is committed to achieving the New Jersey Core Curriculum Content Standards and producing high academic achievement by all students. The Charter School will integrate a holistic curriculum, utilize learner center techniques, family and care giver centered approaches, comprehensive community involvement, cutting edge technology and an intimate nurturing environment that will enhance positive self-images.

HUDSON ARTS AND SCIENCE CHARTER SCHOOL
(County of Hudson)
Notes to the Basic Financial Statements
Year Ended June 30, 2024

2 Summary of Significant Accounting Policies

This summary of significant accounting policies of Hudson Arts and Science Charter School is presented to assist in understanding the Charter School's financial statements and notes are a representation of the Charter School's management, who is responsible for their integrity and objectivity. These accounting policies conform to generally accepted accounting principles in the United States as applied to governmental units and have been consistently applied in the preparation of these financial statements.

The financial statements of Hudson Arts and Science Charter School (the "Charter School") have been prepared in conformity with generally accepted accounting principles (GAAP) as applied to governmental units. GASB is the accepted standard-setting body for establishing governmental accounting and financial reporting principles.

The Charter School also applies Financial Accounting Standards Board (FASB) pronouncements issued on or before November 30, 1989, to its governmental and business-type activities and to its enterprise fund unless they conflict with or contradict GASB pronouncements. The most significant of the Charter School's accounting policies are described below:

A Basis of Presentation

The Charter School's basic financial statements consist of government-wide statements, including a statement of net position and a statement of activities, and fund financial statements that provide a more detailed level of financial information.

Charter School Government-wide Financial Statements

The statement of net position and the statement of activities display information about the Charter School as a whole. These statements include the financial activities of the Charter School, except for fiduciary funds.

The statement of net position presents the financial condition of the governmental and business-type activities of the Charter School at year-end. The statement of activities presents a comparison between direct expenses and program revenues for each program or function of the Charter School's governmental and business-type activities. Direct expenses are those that are specifically associated with a service, program or department and are therefore clearly identifiable to a particular function. Program revenues include charges paid by the recipient of the goods or services offered by the program and grants and contributions that are restricted to meeting the operational or capital requirements of a particular program. Revenues that are not classified as program revenues are presented as general revenues of the Charter School, with certain limited exceptions. The comparison of direct expenses with program revenues identifies the extent to which each governmental function is self-financing or draws from the general revenues of the Charter School.

HUDSON ARTS AND SCIENCE CHARTER SCHOOL
(County of Hudson)
Notes to the Basic Financial Statements
Year Ended June 30, 2024

2 Summary of Significant Accounting Policies - *continued*

The governmental activities generally are financed through federal and state awards, taxes and other non-exchange revenues. Business-type activities are financed in whole or in part by fees charged to external parties for goods or services.

Fund Financial Statements

Fund financial statements of the Charter School are organized into funds, each of which is considered to be separate accounting entities. Each fund is accounted for by providing a separate set of self-balancing accounts that constitute its assets, liabilities, fund equity, revenues, and expenditure/expenses. Funds are organized into three major categories: governmental, proprietary, and fiduciary. An emphasis is placed on major funds within the governmental and proprietary categories. A fund is considered major if it is the primary operating fund of the Charter School. The New Jersey Department of Education (NJDOE) requires that all funds be reported as major, as it is considered important for public interest and to promote consistency among Charter Schools financial reporting in the State of New Jersey.

B Fund Accounting

The Charter School segregates transactions related to certain Charter School functions or activities in separate funds in order to aid financial management and to demonstrate legal compliance. Fund financial statements are designed to present financial information of the Charter School at a more detailed level.

Governmental Funds

Governmental funds are those funds through which most governmental functions typically are financed. Governmental fund reporting focuses on the sources, uses and balances of current financial resources. Expendable assets are assigned to the various governmental funds according to the purposes for which they will be paid. The difference between governmental fund assets and liabilities is reported as fund balance. The following are the Charter Schools' major governmental funds:

General Fund - The General Fund is the primary operating fund of the Charter School. It is used to account for all financial resources except those that are legally or administratively required to be accounted for in another fund. Included are certain expenditures for vehicles and movable instructional or non-instructional equipment which are classified in the Capital Outlay sub-fund.

HUDSON ARTS AND SCIENCE CHARTER SCHOOL
(County of Hudson)
Notes to the Basic Financial Statements
Year Ended June 30, 2024

2 Summary of Significant Accounting Policies - *continued*

As required by the New Jersey Department of Education, the Charter School included budgeted capital outlay in this fund. Generally accepted accounting principles as they pertain to governmental entities state that General Fund resources may be used to directly finance capital outlays for long-lived improvements as long as the resources in such cases are derived exclusively from unrestricted revenues.

Resources for budgeted capital outlay purposes are normally derived from State of New Jersey aid and appropriated fund balance. Expenditures are those that result in the acquisition of or additions to fixed assets for land, existing buildings, improvements of ground, construction of buildings, additions to or remodeling of buildings and the purchase of built-in equipment. These resources can be transferred from and to current expense by board resolution.

Special Revenue Fund - The Special Revenue Fund is used to account for the proceeds of specific revenue from State and Federal Government, (other than major Capital Projects, Debt Service or the Enterprise Funds) and local appropriations that legally restricted to expenditures for specified purposes.

Capital Projects Fund - The Capital Projects Fund is used to account for all financial resources to be used for the acquisition or construction of major capital facilities (other than those financed by proprietary funds). The financial resources are derived from temporary notes or serial bonds that are specifically authorized by the voters as a separate question on the ballot either during the annual election or at a special election.

Proprietary Funds

The focus of Proprietary Funds' measurement is upon determination of net income, changes in net position, financial position and cash flows. The generally accepted accounting principles applicable are those similar to business in the private sector. The following is a description of the Proprietary Funds of the Charter School:

Enterprise Funds - The Enterprise Fund is utilized to account for operations that are financed and operated in a manner similar to private business enterprises where the intent of the Charter School is that the cost (i.e. expenses including depreciation and indirect costs) of providing goods and services to the students on a continuing basis be financed or recovered primarily through user charges; or where the Charter School has decided that periodic determination of revenues earned, expenses incurred, and/or net income is appropriated for capital maintenance, public policy, management control, accountability or other purposes.

HUDSON ARTS AND SCIENCE CHARTER SCHOOL
(County of Hudson)
Notes to the Basic Financial Statements
Year Ended June 30, 2024

2 Summary of Significant Accounting Policies - *continued*

All proprietary funds are accounted for on a cost of services or “capital maintenance” measurement focus. This means that all assets and all liabilities, whether current or non-current, associated with their activity are included on their balance sheets. Their reported fund equity (net total assets) is segregated into contributed capital and unreserved retained earnings, if applicable. Proprietary fund type operating statements present increases (revenue) and decreases (expenses) in net total assets.

Fiduciary Funds

Fiduciary or trust and Agency Funds are used to account for assets held by the Charter School in a trustee capacity or as an agent for individuals, private organizations, other governments and/or other funds. This fund category includes:

Trust Funds - Expendable Trust Funds (unemployment compensation) are accounted for in essentially the same manner as the governmental funds. The unemployment compensation trust fund is used to account for contributions from employees and the employer (the Charter School) and interest earned on the balance as well as payments to the State for reimbursements of unemployment claims. ***Agency Funds*** – Agency funds (*Payroll, Health Benefits and Student Activity Fund*) are used to account for the assets that the Charter School holds on behalf of others as their agent. Agency funds are custodial in nature and do not involved measurement of results of operations.

GASB Statement No 84 Fiduciary Activities – Starting from the previous year ended June 30, 2021, there was no Fiduciary Fund due to the adoption of GASB Statement 84, Fiduciary Activities.

C Measurement Focus and Basis of Accounting

Measurement focus is a term used to describe “which” transactions are recorded within the various financial statements. ***Basis of accounting*** refers to “when” transactions are recorded regardless of the measurement focus applied.

Measurement Focus

On the government-wide statements of net position and the statement of activities, both governmental and business-like activities are presented using the economic resources measurement focus. The accounting and financial reporting treatment applied to a fund is determined by its measurement focus. All governmental funds and expendable trust funds are accounted for using a current financial resources measurement focus. With this measurement focus, only current assets and current liabilities generally are included on the balance sheet. Operating statement of these funds present increases (i.e., revenues and other financing sources), and decreases (i.e. Expenditures and other finances uses) during a given period. These funds use fund balance as their measure of available spendable financial resources at the end of the period.

HUDSON ARTS AND SCIENCE CHARTER SCHOOL
(County of Hudson)
Notes to the Basic Financial Statements
Year Ended June 30, 2024

2 Summary of Significant Accounting Policies - *continued*

All proprietary funds are accounted for on a flow economic resources measurement focus. With this measurement focus, the accounting adjectives are the determination of operating income, changes in net position (or cost recovery), financial position, and cash flow. All assets and all liabilities, whether current or non-current, associated with their activities are included on the balance sheet. Fund equity (i.e., net total assets) is classified as net position.

Basis of Accounting

In the government wide statement of net position and statements of activities, both governmental and business like activities are presented using the accrual basis of accounting. Under the accrual basis of accounting revenues are recognized when earned and expenses are recognized when the liability, resulting from exchange and exchange like transactions, is incurred (i. e the exchange takes place).

In the fund financial statements, governmental fund and agency funds are presented on the modified accrual basis of accounting. Under the modified accrual basis of accounting, revenues are recognized when they become both measurable and available. “Measurable” means the amount of the transaction can be determine and “available” means collectible with the current period or soon enough thereafter to be used to pay liabilities of the current period. State equalization monies are recognized as revenue during the period in which they are appropriated. A one-year availability period is used for revenue recognition for all other governmental funds revenues.

D Budgets/Budgetary Control

Annual appropriated budgets are prepared in the spring of each year for the general and special revenue fund. The budgets are submitted to the County Office and the Education Commissioner for approval. Budgets except for the special revenue fund which is prepared using a non-GAAP budgetary basis, are prepared using the modified accrual basis of accounting. The legal level of budgetary control is established at line item accounts within each fund. Line item accounts are defined as the lowest (most specific) level of detail as established pursuant to the minimum chart of accounts referenced in N.J.A.C. 6:20-2A.2(m)1. Transfers of appropriations may be made by Charter School Board resolution at any time during the fiscal year subject to the limitation of P.L. 2004 c73 (S1701). The Board of Trustees did not make any material supplemental budgetary appropriations during the fiscal year.

Formal budgetary integration into the accounting system is employed as a management control device during the year. For governmental funds, there are no substantial differences between the budgetary basis of accounting and generally accepted accounting principles, with the exception of the Special Revenue Fund as noted below.

HUDSON ARTS AND SCIENCE CHARTER SCHOOL
(County of Hudson)
Notes to the Basic Financial Statements
Year Ended June 30, 2024

2 Summary of Significant Accounting Policies - *continued*

Encumbrance accounting is also employed as an extension of formal budgetary integration in the governmental funds types. Unencumbered appropriations lapse at fiscal year-end.

The accounting records of the special revenue fund are maintained on the grant accounting budgetary basis. The grant accounting budgetary basis differs from GAAP in that the grant accounting budgetary basis recognized encumbrances as expenditures and also recognized the related revenues, whereas the GAAP basis does not. Sufficient supplemental records are maintained to allow of the presentation of GAAP basis financial reports.

E Cash, Cash Equivalent and Investments

Cash and cash equivalents include petty cash, change funds, cash in banks and all highly liquid investment with a maturity of three months or less at the time of purchases and are stated at cost plus accrued interest. US Treasury and agency obligations and certificates of deposit with maturities of one year or less when purchases are stated at cost. All other investments are stated at fair value.

New Jersey Charter Schools are limited as to the types of the investments and types of financial institution they may invest in. New Jersey statute 18A:20-37 provides a list of permissible investment that may be purchased by New Jersey Charter Schools.

Additionally, the Charter School has adopted a cash management plan that requires it to deposit public fund in public depositories protected from loss under the provisions of the Governmental Unit Deposit Protection Act ("GUDPA"). GUDPA was enacted in 1970 to protect Governmental Units from loss funds on deposit with a failed banking institution in New Jersey.

N.J.S.A. 17:9-41 et. seq. established the requirements for the security of deposits of governmental units. The statute requires that no governmental unit shall deposit public funds in a public depository unless such funds are secured in accordance with the Act. Public depositories include Savings and Loan Institutions, bank (both state and national banks) and saving bank the deposits of which are federally insured. All public depositories must pledge collateral, having a market value at least equal to five percent of the average daily balance of collected public funds, to secure the deposit of Governmental Units. If a public depository fails, the collateral it has pledged, plus the collateral of all other public depositories, is available to pay the full amount of their deposits to the Governmental Units.

HUDSON ARTS AND SCIENCE CHARTER SCHOOL
(County of Hudson)
Notes to the Basic Financial Statements
Year Ended June 30, 2024

2 Summary of Significant Accounting Policies - *continued*

F Short-Term Interfund Receivables/Payables

On the fund financial statement, receivable and payables resulting from short-term (due within one year) interfund loans are classified as interfund receivables/payables. Interfund balances within governmental activities and within business-type activities are eliminated on the Government Wide Statements of Net Position.

G Inventories and Prepaid Expenses

Inventories and prepaid expenses, which benefit future periods, other than those recorded in the enterprise fund are recorded as expenditure during the year of purchase. Inventories in the proprietary funds are valued at cost, which approximates market, using the first-in-first-out (FIFO) method.

H Capital Assets

Capital assets, which include leasehold improvements, equipment, furniture & fixtures and vehicles are reported in the applicable governmental or business-type activities columns of the Government-wide financial statements. Capital assets are defined by the Charter School as assets with initial, individual cost of more than \$2,000 and an estimated useful life in excess of two years. Such assets are recorded at historical cost or through estimation procedures performed by an independent appraisal company.

The cost of normal repairs and maintenance that do not add to the value of the asset or materially extend the assets lives are not capitalized. Donated capital assets are capitalized at estimated fair market value on the date donated. Depreciation of capital assets is computed and recorded by the straight-line method.

<u>Description of Capital Assets</u>	<u>Estimated Lives (Years)</u>
Leasehold improvements	5-10
Machinery and equipment	5-10

HUDSON ARTS AND SCIENCE CHARTER SCHOOL
(County of Hudson)
Notes to the Basic Financial Statements
Year Ended June 30, 2024

2 Summary of Significant Accounting Policies - *continued*

I Compensated Absences

The Charter School accounts for compensated absences (e.g., unused vacation, sick leave) as directed by Governmental Accounting Standards Board Statement No. 16 (GASB 16), "Accounting for Compensated Absences." Compensated absences are those absences for which employees will be paid, such as vacation, sick leave, and sabbatical leave. A liability for compensated absences that are attributable to services already rendered, and that are not contingent on specific events that are outside the control of the Charter School and its employees, is accrued as the employees earn the rights to the benefits. Compensated absences that relate to future services, or that are contingent on specific events that are outside the control of the Charter School and its employees, are accounted for in the period in which such service is rendered or in which such events take place. In governmental and similar trust funds, compensated absences that are expected to be liquidated with the expendable available financial resources are reported as expenditure and fund liability in the fund that will pay for the compensated absences. In proprietary and similar trust funds, compensated absences are required as an expense and liability of the fund that will pay for them.

The Charter School had no compensated absences as of June 30, 2024.

J Accrued Liabilities and Long-Term Obligations

All payables, accrued liabilities, and long-term obligations are reported on the government-wide financial statements.

In general, governmental fund payables and accrued liabilities that, once incurred, are paid in a timely manner and in full from current financial resources are reported as obligations of the funds. However, the non-current portion of compensated absences and mortgage payable (if any) that will be paid from governmental funds are reported as liabilities on the fund financial statements only to the extent that they are normally expected to be paid with expendable, available financial resources.

K Deferred Revenue

Deferred revenue in special revenue fund represent cash that has been received but not yet earned.

HUDSON ARTS AND SCIENCE CHARTER SCHOOL
(County of Hudson)
Notes to the Basic Financial Statements
Year Ended June 30, 2024

2 Summary of Significant Accounting Policies - *continued*

L Fund Balance and Equity

In February 2009, the GASB issued GASB Statement No. 54, Fund Balance Reporting and Governmental Fund Type Definitions (“GASB 54”). GASB 54 is effective for periods beginning after June 15, 2010 and establishes fund balance classifications that comprise a hierarchy based primarily on the extent to which government is bound to observe constraints imposed upon the use of resources reported in governmental funds. Under GASB 54, fund balances in the governmental funds financial statements are reported under the modified accrual basis of accounting and classified into the following five categories, as defined below:

1. Non-spendable – includes amounts that cannot be spent because they either (a) not in spendable form or (b) legally or contractually required to be maintained intact. Assets included in this fund balance category include prepaid assets, inventories, long-term receivables, and corpus of any permanent funds.
2. Restricted – includes amounts that can be spent only for the specific purposes stipulated by constitution, external resource providers, or through enabling legislation.
3. Committed – includes amounts that can be used only for the specific purposes determined by a formal action of the government’s highest level of decision-making authority.
4. Assigned – amounts intended to be used by the government for specific purposes but do not meet the criteria to be classified as restricted or committed.
5. Unassigned – includes all spendable amounts not contained in the other classifications.

When both restricted and unrestricted resources are available for use, it is the Charter School’s policy to use restricted resources first, then unrestricted resources as they are needed. For the unrestricted fund balance, the Charter School first spends committed funds, then assigned funds, and finally, unassigned funds.

M Net Position

Net Position represent the difference between assets and liabilities in the Government-wide financial statements. Net position invested in capital assets, net of related debt consists of capital assets, net of accumulated depreciation, reduced by the outstanding balance of any long-term debt used to build or acquire the capital assets. Net position are reported as restricted in the Government-wide financial statements when there are limitations imposed on their use through external restrictions imposed by creditors, grantors, or laws or regulations of other governments.

HUDSON ARTS AND SCIENCE CHARTER SCHOOL
(County of Hudson)
Notes to the Basic Financial Statements
Year Ended June 30, 2024

2 Summary of Significant Accounting Policies - *continued*

N Management Estimates

The preparation of financial statements in conformity with generally accepted accounting principles requires management to make estimates that affect the recorded amount of assets and liabilities and disclosure of contingent assets and liabilities at the date of the financial statements and the reported amounts of revenues and expenditures during the reporting period. Actual results could differ from those estimates.

O On-Behalf Payments

Revenues and expenditures of the General Fund include payment made by the state of New Jersey for Pension and social security contributions for certified teacher members of the New Jersey Teachers' Pension and Annuity Fund. The amounts are not required to be included in the Charter School's annual budget.

P GASB Pronouncements

Adoption of New Accounting Standard

During the previous fiscal year ended June 30, 2021, the Charter School adopted **GASB Statement No. 84, *Fiduciary Activities (GASB 84)***. GASB 84 enhances the identification of fiduciary activities for accounting and financial reporting purposes and how those activities should be reported. Specifically, GASB 84 establishes criteria for identifying fiduciary activities of all state and local governments. The focus of the criteria generally is on (1) whether a government is controlling the assets of the fiduciary activity and (2) the beneficiaries with whom a fiduciary relationship exists.

As part of the adoption, the Charter School no longer considers activities in the Unemployment Fund Account, Payroll Agency Fund and Student Activities as fiduciary activities applicable under GASB 84. As a result, the Charter School no longer presents a Statement of Fiduciary Net Position, and records payroll deductions and withholding payable, unemployment activities in the General Fund in the Governmental Fund financial statements.

During the previous year ended June 30, 2022 the Charter School adopted **GASB Statement No. 87, *Leases***. This Statement establishes standards of accounting and financial reporting for leases by lessees and lessors.

HUDSON ARTS AND SCIENCE CHARTER SCHOOL
(County of Hudson)
Notes to the Basic Financial Statements
Year Ended June 30, 2024

2 **Summary of Significant Accounting Policies - *continued***

Q **Fair Value of Financial Instruments**

The Charter School follows the accounting and disclosure standards pertaining to GASB 72, Fair Value Measurement and Application, for qualifying assets and liabilities. Fair value is defined as the price that the Charter School would receive upon selling an asset or pay to settle a liability in an orderly transaction between market participants at the measurement date.

The Charter School uses a framework for measuring fair value that included a hierarchy that categorizes and prioritizes the sources used to measure and disclose fair value. This hierarchy is broken down into three levels based on inputs that market participants would use in valuing the financial instruments based on market data obtained from sources independent of the Charter School. Inputs refer broadly to the assumptions that market participants would use in pricing the financial instruments, including assumptions about risk. Inputs may be observable or unobservable. Observable inputs are inputs that are developed using market data, such as publicly available information about actual events or transactions, and which reflect the assumptions that market participants would use when pricing an asset or liability. Unobservable inputs are inputs for which market data are not available and that is developed using the best information available about the assumptions that market participants would use when pricing an asset or liability.

The three-tier hierarchy of inputs is summarized in the three broad levels as follows:

Level 1 – inputs that reflect unadjusted quoted prices in active markets for identical assets at the measurement date.

Level 2 – inputs other than quoted prices that are observable for the asset either directly or indirectly, including inputs in markets that are not considered to be active.

Level 3 – inputs that are unobservable and which require significant judgement or estimation.

An asset or liability level within the framework is based upon the lowest level of any input that is significant to the fair value measurement.

HUDSON ARTS AND SCIENCE CHARTER SCHOOL
(County of Hudson)
Notes to the Basic Financial Statements
Year Ended June 30, 2024

3 Deposits and Investments

New Jersey statutes require that Charter Schools deposit public funds in public depositories located in New Jersey that are insured by the Federal Deposit Insurance Corporation, the Federal Savings and Loan Insurance Corporation, or by any other agency of the United States that insures deposits made in public depositories. Charter schools are also permitted to deposit public funds in the State of New Jersey Cash Management Fund (NJCMF), the New Jersey Arbitrage Rebate Management Fund (NJARM) and the M.B.I.A Class.

New Jersey statutes require public depositories to maintain collateral for deposits of public funds that exceed depository insurance limits as follows: The market value of the collateral must equal at least 5% of the average daily balance of collected funds on deposit. In addition to the above collateral requirement, if the public funds deposited exceed 75% of the capital funds of the depository, the depository must provide collateral having a market value at least equal to 100% of the amount exceeding 75%. All collateral must be deposited with the Federal Reserve Bank of New York, the Federal Reserve Bank of Philadelphia, the Federal Home Loan Bank of New York, or a banking institution that is a member of the Federal Reserve System and has capital funds of not less than \$25,000,000.

The Charter School's cash and cash equivalents are classified below to inform financial statement users about the extent to which the Charter School's deposits and investments are exposed to custodial credit risk. As of June 30, 2024, the Charter School's carrying amount of deposits and investments are as follows:

	General Fund	Special Revenue	Enterprise Funds	Agency Funds	Total
Operating A/C	\$ 4,570,219	\$ 381,395	\$ 167,433	\$ -	\$ 5,119,047
Escrow	75,000	-	-	-	75,000
Total	<u>\$ 4,645,219</u>	<u>\$ 381,395</u>	<u>\$ 167,433</u>	<u>\$ -</u>	<u>\$ 5,194,047</u>

Operating cash accounts are held in the Charter School's name by one banking institution. At June 30, 2024, the Charter School's carrying amount of deposits was \$5,194,047 and the bank balance was \$5,649,848. Of the bank balance, up to a maximum of \$250,000 of the Charter School's cash deposits on June 30, 2024 were secured by federal deposit insurance and \$5,149,848 was covered by a collateral pool maintained by the bank as required by New Jersey statutes in accordance with the New Jersey Governmental Unit Deposit Protection Act ("GUDPA").

It should be noted that during the year ended June 30, 2024, the Charter School changed its banking institution from Santander Bank to Provident Bank. Also, the Charter School invested approximately \$5 million of its cash funds in the safe federal Treasury Bills with maturities ranging from 6 months to one year.

HUDSON ARTS AND SCIENCE CHARTER SCHOOL
(County of Hudson)
Notes to the Basic Financial Statements
Year Ended June 30, 2024

3 Deposits and Investments - *continued*

Establishment of an Escrow Account

The Charter School has established and funded an Escrow Account pursuant to an agreement signed with the New Jersey Department of Education. The required maximum is \$75,000. The Charter School has fully funded the \$75,000. The agreement stipulates that the intended use of the escrow amount is “to pay for legal and audit expenses and any other outstanding pension benefits that would be associated with a dissolution should it occur.”

GASB Statement No. 40 requires that the Charter School disclose whether its deposits are exposed to custodial risk (risk that in the event of failure of the counterparty, the Charter School would not be able to recover the value of its deposit or investment). In general deposits are considered to be exposed to custodial risk by three categories described below:

Category 1 - Insured or collateralized with securities held by the Charter School or by its agent in the Charter School’s name. **Category 2** - Collateralized with securities held by the pledging public depository’s trust department or agent in the Charter School’s name. **Category 3** - Uncollateralized, including any deposits that are collateralized with securities held by the pledging public depository, or by its trust department or agent, but not in the Charter School’s name.

The Charter School does not have a policy for the management of the custodial risk, other than depositing all of its funds in banks covered by GUDPA.

Investments

New Jersey statutes permit the Charter School to purchase the following types of securities:

1. Bonds or other obligations of the United States or obligations guaranteed by the United States.
2. Bonds of any Federal Intermediate Credit Bank, Federal Home Loan Bank, Federal national Mortgage Agency or of any United States Bank for Cooperatives which have a maturity date not greater than twelve months from the date of purchase.
3. Bonds or other obligations of the Charter School.
4. New Jersey Cash Management Fund, New Jersey Arbitrage Rebate Management Fund and MBIA CLASS.

HUDSON ARTS AND SCIENCE CHARTER SCHOOL
(County of Hudson)
Notes to the Basic Financial Statements
Year Ended June 30, 2024

3 Deposits and Investments - continued

During the year ended June 30, 2024, the Charter School invested approximately \$7.8 million of its cash funds in the safe federal Treasury Bills with maturities ranging from 6 months to one year.

The table below segregates the financial (Federal Treasury Bills) assets as of June 30, 2024 that are measured at fair value on a recurring basis (at least annually) into the most appropriate level within the fair value hierarchy based on the inputs used to determine the fair value at the measurement date:

Fair Value Based as of June 30, 2023				
	Assets Measured at Fair Value	Quoted Prices in Active Markets (Level 1)	Other Observable Inputs (Level 2)	Unobservable Inputs (Level 3)
Charles Schwab Brokerage Services:				
Cash and money market	\$ 17,267	\$ 17,267	\$ -	\$ -
Treasury Bills	7,813,705	-	7,813,705	-
Total investments	<u>\$ 7,830,972</u>	<u>\$ 17,267</u>	<u>\$ 7,813,705</u>	<u>\$ -</u>

For the above Treasury Bills, the fair value was determined by reference to US Department of the Treasury using the maturity date, CUSIP (Committee on Uniform Securities Identification Procedures) and other relevant information generated by Treasury Bills transactions.

HUDSON ARTS AND SCIENCE CHARTER SCHOOL
(County of Hudson)
Notes to the Basic Financial Statements
Year Ended June 30, 2024

4 Capital Assets and Right-of-Use Lease Assets

The following schedule is a summarization of the governmental activities changes in capital assets for the year ended June 30, 2024:

	<u>Beginning Balance</u>	<u>Net Additions (Deletions)</u>	<u>Ending Balance</u>
Governmental activities:			
Capital assets not depreciated:	\$ -	\$ -	\$ -
Capital assets, being depreciated:			
Leasehold improvements	1,955,515	26,979	1,982,494
Machinery and equipment	901,229	184,500	1,085,729
	<u>2,856,744</u>	<u>211,479</u>	<u>3,068,223</u>
Less accumulated depreciation			
Leasehold improvements	454,991	198,249	653,240
Machinery and equipment	650,741	106,161	756,902
	<u>1,105,732</u>	<u>304,410</u>	<u>1,410,142</u>
Total capital assets net	<u><u>\$ 1,751,012</u></u>	<u><u>\$ (92,931)</u></u>	<u><u>\$ 1,658,081</u></u>
Business-type activities:			
Capital assets, being depreciated:			
Machinery and equipment	\$ 54,620	\$ -	\$ 54,620
Less accumulated depreciation	(54,620)	-	(54,620)
Enterprise fund capital assets - net	<u><u>\$ -</u></u>	<u><u>\$ -</u></u>	<u><u>\$ -</u></u>

Depreciation expense of \$304,410 was charged to an unallocated function.

HUDSON ARTS AND SCIENCE CHARTER SCHOOL
(County of Hudson)
Notes to the Basic Financial Statements
Year Ended June 30, 2024

4 Capital Assets and Right-of-Use Lease Assets - continued

Changes in right-to-use lease assets are as follows for the fiscal year ended June 30, 2024:

Governmental Activities	Beginning Balance	Net Additions	Ending Balance
Right-of-use lease assets			
Premises	\$ 13,311,580	\$ -	\$ 13,311,580
Equipment	44,307	-	44,307
Total cost	13,355,887	-	13,355,887
Less - accumulated depreciation			
Premises	5,897,689	997,360	6,895,049
Equipment	29,915	9,832	39,747
Total accumulated depreciation	5,927,604	1,007,192	6,934,796
Right-of-use lease assets - net	\$ 7,428,283	\$ (1,007,192)	\$ 6,421,091

5 Lease Obligations

Lease Agreements – Implementation of GASB 87

Lease Liabilities	Outstanding Balance	Acquired Current Year	Retired Current Year	Ending Balance
Facilities lease liabilities	\$ 8,334,024	\$ -	\$ (977,546)	\$ 7,356,478
Equipment lease liabilities	14,882	-	(10,092)	4,790
Total lease liabilities	\$ 8,348,906	\$ -	\$ (987,638)	7,361,268
Current portion				987,639
Non-current portion				6,373,629
Total lease liabilities				\$ 7,361,268

The Charter School leases its premises and equipment under the terms of several non-cancelable leases. Certain leases are automatically renewed upon the charter renewal and can be extended through various dates through June 30, 2031.

HUDSON ARTS AND SCIENCE CHARTER SCHOOL
(County of Hudson)
Notes to the Basic Financial Statements
Year Ended June 30, 2024

5 Lease Obligations - continued

Lease Agreements – Implementation of GASB 87 - continued

The leases required aggregate annual cash payments of approximately \$1,143,099 during the year ended June 30, 2024. Interest expense on the leases was \$395,016 for the year ended June 30, 2024 which is reflected as lease interest expense on the accompanying budgetary comparison schedule – general fund (exhibit C-1).

The net value of the right-of-use assets was \$6,421,091 as of June 30, 2024 which was calculated using a discount rate of 5% (the Charter School's estimated incremental borrowing rate as of July 1, 2023).

The net value of the lease liabilities at June 30, 2024 was \$7,361,268. Amortization of the related right-to-use lease assets was \$1,007,192 for the year ended June 30, 2024.

Future minimum payments under these agreements and future amortization are as follows:

Year ending June 30:	Interest	Principal	Amortization
2025	\$ 344,619	\$ 1,032,348	\$ 1,001,920
2026	305,081	500,456	541,917
2027	279,476	526,060	541,917
2028	252,562	552,974	541,917
2029	224,281	581,265	541,917
Thereafter	665,052	4,168,165	3,251,503
	\$ 2,071,071	\$ 7,361,268	\$ 6,421,091

Description of Lease Terms

Facilities Lease

The Church of Saint Stephen Lease – 131 Midland Avenue, Kearny

The Charter School leases classroom and office spaces for its *Elementary School* at **131 Midland Avenue, Kearny**, New Jersey. The original lease was for 4 years (48) months commencing July 1, 2016 through June 30, 2020. It has a one-time renewal option of 5 years from July 1, 2020 to June 30, 2025 which had been exercised.

HUDSON ARTS AND SCIENCE CHARTER SCHOOL
(County of Hudson)
Notes to the Basic Financial Statements
Year Ended June 30, 2024

5 Lease Obligations - continued

Description of Lease Terms - continued

Facilities Lease - continued

114 Chestnut Street Lease

The Charter School leases classroom and office spaces for its *Middle School* at 114 Chestnut Street, Kearny, New Jersey. The original lease was for seven (7) years (84) months commencing July 1, 2018 through June 30, 2025. It has two five year options for a total of ten years through June 30, 2035.

Equipment Leases

The Charter School leases office equipment (computers and copiers) under several operating lease agreements. For the year ended June 30, 2024, the Charter School incurred \$10,371 in equipment lease expenditures.

Year ending June 30:	Facilities Leases		Equipment Leases	Total
	131 Midland Ave., Kearny	114 Chestnut Street, Kearny		
2025	\$ 702,576	\$ 843,783	\$ 4,920	\$1,551,279
2026	-	-	-	-
2027 to 2029	-	-	-	-
Thereafter	-	-	-	-
\$ -	\$ 702,576	\$ 843,783	\$ 4,920	\$1,551,279

HUDSON ARTS AND SCIENCE CHARTER SCHOOL
(County of Hudson)
Notes to the Basic Financial Statements
Year Ended June 30, 2024

6 Pension Plans

Description of Plans

Substantially all of the employees of the Charter School are covered by either the Public Employee's Retirement System or the Teacher's Pension and Annuity Fund (both of which are contributory defined benefits plans). Both were established by state statute and are administered by the New Jersey Division of Pension and Benefit (Division). According to the State of New Jersey Administrative Code, all obligations of both Systems will be assumed by the State of New Jersey should the Systems terminate.

The State of New Jersey, Department of the Treasury, Division of Pensions and Benefits, issues publicly available financial reports that include the financial statements and required supplementary information for TPAF and PERS. The financial reports may be obtained by writing to the State of New Jersey, Department of the Treasury, Division of Pensions and Benefits, P.O. Box 295, Trenton, New Jersey 08625-0295.

Teachers' Pension and Annuity Fund (TPAF)

The Teachers' Pension and Annuity Fund was established in January 1955 under the provisions of N.J.S.A. 18A:66 to provide coverage including post-retirement health care to substantially all full time public school employees in the State. Membership is mandatory for such employees and vesting occurs after 10 years of service for pension benefits and 25 years for health care coverage. Age eligibility and benefit provisions were affected by Chapters 92 and 103, P.L. 2007, Chapter 89, P.L. 2008, Chapter 1, P.L. 2010, and Chapter 78, P.L. 2011. Members are classified into one of five tiers dependent upon the date of their enrollment. Tier 1, 2 and 3 members are eligible to retire at age 60, 60, and 62, respectively, with an annual benefit generally determined to be 1/55th of the average annual compensation for the highest three fiscal years' compensation for each year of membership during years of credited service. Tier 4 and 5 members are eligible to retire at age 62 and 65, respectively, with an annual benefit generally determined to be 1/60th of the average annual compensation for the highest five fiscal years' compensation for each year of membership during years of credited service. Anyone who retires early and is under their respective tier's retirement age receives retirement benefits as calculated in the formulas mentioned above, but at a reduced rate in accordance with applicable New Jersey Statute based upon their tier.

HUDSON ARTS AND SCIENCE CHARTER SCHOOL
(County of Hudson)
Notes to the Basic Financial Statements
Year Ended June 30, 2024

6 Pension Plans - *continued*

Public Employees' Retirement System (PERS)

The Public Employees' Retirement System was established in January 1955 under the provisions of N.J.S.A. 43:15A to provide coverage including post-retirement health care to substantially all full-time employees of the State or any county, municipality, school Board or public agency provided the employee is not a member of another State-administered retirement system. Age eligibility and benefit provisions were affected by Chapters 92 and 103, P.L. 2007, Chapter 89, P.L. 2008, Chapter 1, P.L. 2010, and Chapter 78, P.L. 2011. Members are classified into one of five tiers dependent upon the date of their enrollment. Tier 1, 2 and 3 members are eligible to retire at age 60, 60, and 62, respectively with an annual benefit generally determined to be 1/55th of the average annual compensation for the highest three fiscal years' compensation for each year of membership during years of credited service. Tier 4 and 5 members are eligible to retire at age 62 and 65, respectively with an annual benefit generally determined to be 1/60th of the average annual compensation for the highest five fiscal years' compensation for each year of membership during years of credited service. Anyone who retires early and is under their respective tier's retirement age receives retirement benefits as calculated in the formulas mentioned above, but at a reduced rate in accordance with applicable New Jersey Statute based upon their tier.

Defined Contribution Retirement Program (DCRP)

The Defined Contribution Retirement Program (DCRP) was established under the provision of Chapter 92, P.L. 2007 and Chapter 103, P.L. 2007 to provide coverage to elected and certain appointed officials, effective July 1, 2007. Membership is mandatory for such individuals with vesting occurring after one year of membership.

Funding Policy

The contribution policy is set by New Jersey State Statutes and contributions are required by active members and contributing members. Plan member and employer contributions may be amended by State of New Jersey legislation. Under the provisions of Chapter 78, P.L. 2011, employee contribution rates for TPAF and PERS increased to 7.5% of employees' annual compensation. Employers are required to contribute at an actuarially determined rate in both the TPAF and PERS. The actuarially determined contribution includes funding for noncontributory death benefits and post-retirement medical premiums. Under current statute the Board is a non-contributing employer of the TPAF.

HUDSON ARTS AND SCIENCE CHARTER SCHOOL
(County of Hudson)
Notes to the Basic Financial Statements
Year Ended June 30, 2024

6 Pension Plans - *continued*

Annual Pension Costs (APC)

Per the requirements of GASB Statement No. 27 for the year ended June 30, 2011 for TPAF, which is a cost sharing plan with special funding situations, annual pension cost differs from the annual required contribution. For PERS, which is a cost sharing multi-employer defined benefit pension plan, the annual pension cost equals contributions made. TPAF employer contributions are made annually by the State of New Jersey to the pension system on behalf of the Board.

PERS employer contributions are made annually by the Board to the pension system in accordance with Chapter 114, P.L. 1997. In the DCRP, which is a defined contribution plan, member contributions are matched by a 3% employer contribution.

The Charter School's contribution to PERS for the year ended June 30, 2024 was \$231,108.

In accordance with N.J.S.A 18A:66-66 the State of New Jersey reimbursed the Charter School \$325,926 during the year ended June 30, 2024 for the employer's share of social security contributions for TPAF members, as calculated on their base salaries. Also, the State paid \$1,458,912 into the TPAF pension representing on-behalf employer's portion of the TPAF Pension System Contributions, TPAF Post-Retirement Medical Benefits Contributions and TPAF Long Term Disability Insurance Premium Contributions for the Charter School. These amounts have been included in the school wide financial statements and the fund financial statements as a revenue and expenditure in accordance with GASB No. 24.

HUDSON ARTS AND SCIENCE CHARTER SCHOOL
(County of Hudson)
Notes to the Basic Financial Statements
Year Ended June 30, 2024

7 Pension Plans – GASB 68 Disclosures

Teachers' Pension and Annuity Fund (TPAF)

Summary of Significant Accounting Policies

For purposes of measuring the net pension liability, deferred outflows of resources and deferred inflows of resources related to pensions, and pension expense, information about the fiduciary net position of the Teachers' Pension and Annuity Fund (TPAF) and additions to/deductions from the TPAF's fiduciary net position have been determined on the same basis as they are reported by the TPAF.

For this purpose, benefit payments (including refunds of employee contributions) are recognized when due and payable in accordance with the benefit terms. Investments are reported at fair value.

Pension Liabilities, Pension Expense, and Deferred Outflows of Resources and Deferred Inflows of Resources Related to Pension

The employer contributions for the Charter School are legally required to be funded by the State in accordance with N.J.S.A 18:66-33. Therefore, the Charter School (employer) is considered to be in a special funding situation as defined by GASB Statement No. 68 and the State is treated as a non-employer contributing entity.

Pension Liabilities, Pension Expense, and Deferred Outflows of Resources and Deferred Inflows of Resources Related to Pension - continued

Since the Charter School (employer) does not contribute directly to the plan (except for employer specific financed amounts), there is no net pension liability or deferred outflows or inflows to report in the financial statements of the Charter School. However, the state's portion of the net pension liability that was associated with the Charter School was \$12,686,063 as measured on June 30, 2023 and \$14,547,966 as measured on June 30, 2022.

For the year ended June 30, 2024, the Charter School recognized pension expense of \$482,800 and revenue of \$482,800 for support provided by the State. The measurement period for the pension expense and revenue reported in the Charter School's financial statements (A-2) at June 30, 2024 is based upon changes in the collective net pension liability with a measurement period of June 30, 2022 through June 30, 2023. Accordingly, the pension expense and the related revenue associated with the support provided by the State are based upon the changes in the collective net pension liability between July 1, 2022 and June 30, 2023.

HUDSON ARTS AND SCIENCE CHARTER SCHOOL
(County of Hudson)
Notes to the Basic Financial Statements
Year Ended June 30, 2024

7 Pension Plans – GASB 68 Disclosures - *continued*

Teachers' Pension and Annuity Fund (TPAF) - *continued*

Although the Charter School does not report net pension liability or deferred outflows or inflows related to the TPAF, the following schedule illustrates the collective net pension liability and deferred items and the State's portion of the net pension liability associated with the Charter School. The collective amounts are the total of all New Jersey local governments participating in the TPAF plan.

	<u>June 30, 2023</u>	<u>June 30, 2022</u>
Collective deferred outflows of resources	\$ 2,413,548,676	\$ 4,885,289,911
Collective deferred inflows of resources	\$14,741,373,312	\$19,563,805,393
Collective net pension liability (non-employer State of New Jersey)	\$51,032,669,551	\$51,594,415,806
State's portion of the net pension liability that was associated with the Charter School	\$ 12,686,063	\$ 14,547,966
State's portion of the net pension liability that was associated with the Charter School as a percentage of the collective net pension liability	0.024859%	0.028197%

Actuarial Assumptions

The total pension liability for the June 30, 2023 measurement date was determined by an actuarial valuation as of July 1, 2022, which was rolled forward to June 30, 2023. This actuarial valuation used the following actuarial assumptions, applied to all periods in the measurement:

Inflation rate - price	2.75%
Inflation rate - wage	3.25%
Salary increases: thereafter	2.75% - 4.25% based on years of service
Investment rate of return	7.00%

Pre-retirement mortality rates were based on the Pub-2010 Teachers Above-Median Income Employee mortality table with a 93.9% adjustment for males and 85.3% adjustment for females, and with future improvement from the base year of 2010 on a generational basis. Post-retirement mortality rates were based on the Pub-2010 Teachers Above-Median Income Healthy Retiree mortality table with a 114.7% adjustment for males and 99.6% adjustment for females, and with future improvement from the base year of 2010 on a generational basis.

HUDSON ARTS AND SCIENCE CHARTER SCHOOL
(County of Hudson)
Notes to the Basic Financial Statements
Year Ended June 30, 2024

7 Pension Plans – GASB 68 Disclosures - *continued*

Teachers' Pension and Annuity Fund (TPAF) - *continued*

Actuarial Assumptions - continued

Disability mortality rates were based on the Pub-2010 Non-Safety Disabled Retiree mortality table with a 106.3% adjustment for males and 100.3% adjustment for females, and with future improvement from the base year of 2010 on a generational basis. Mortality improvement is based on Scale MP-2021.

The actuarial assumptions used in the July 1, 2022 valuation were based on the results of an actuarial experience study for the period July 1, 2018 to June 30, 2021.

Long-Term Expected Rate of Return - continued

In accordance with State statute, the long-term expected rate of return on plan investments (7.00% at June 30, 2023) is determined by the State Treasurer, after consultation with the Directors of the Division of Investments and Division of Pensions and Benefits, the board of trustees and the actuaries. The long-term expected rate of return was determined using a building block method in which best-estimate ranges of expected future real rates of return (expected returns, net of pension plan investment expense and inflation) are developed for each major asset class.

These ranges are combined to produce the long-term expected rate of return by weighting the expected future real rates of return by the target asset allocation percentage and by adding expected inflation. Best estimates of arithmetic real rates of return for each major asset class included in TPAF's target asset allocation as of June 30, 2023 are summarized in the following table:

HUDSON ARTS AND SCIENCE CHARTER SCHOOL
(County of Hudson)
Notes to the Basic Financial Statements
Year Ended June 30, 2024

7 Pension Plans – GASB 68 Disclosures - *continued*

Teachers' Pension and Annuity Fund (TPAF) - *continued*

Long-Term Expected Rate of Return - continued

Asset Class	Target Allocation	Long Term Expected Real Rate of Return
US Equity	28.00%	8.98%
Non-US Developed Markets Equity	12.75%	9.22%
International Small Cap Equity	1.25%	9.22%
Emerging Markets Equity	5.50%	11.13%
Private Equity	13.00%	12.50%
Real Estate	8.00%	8.58%
Real Assets	3.00%	8.40%
High Yield	4.50%	6.97%
Private Credit	8.00%	9.20%
Investment Grade Credit	7.00%	5.19%
Cash Equivalents	2.00%	3.31%
U.S. Treasuries	4.00%	3.31%
Risk Mitigation Strategies	3.00%	6.21%

Discount Rate

The discount rate used to measure the State's total pension liability was 7.00% as of June 30, 2023. The projection of cash flows used to determine the discount rate assumed that contributions from plan members will be made at the current member contribution rates and that contributions from employers will be based on 100% of the actuarially determined contributions for the State. Based on those assumptions, the plan's fiduciary net position was projected to be available to make projected future benefit payments of current plan members. Therefore, the long-term expected rate of return on plan investments was applied to projected benefit payments in determining the total pension liability.

HUDSON ARTS AND SCIENCE CHARTER SCHOOL
(County of Hudson)
Notes to the Basic Financial Statements
Year Ended June 30, 2024

7 Pension Plans – GASB 68 Disclosures - *continued*

Teachers' Pension and Annuity Fund (TPAF) - *continued*

Sensitivity of the Charter School's Proportionate Share of the Net Pension Liability to Changes in the Discount Rate

Since the Charter School's has no proportionate share of the net pension liability because of the special funding situation, the Charter School would not be sensitive to any changes in the discount rate. Detailed information about the pension plan's sensitivity of the collective net pension liability to changes in the discount rate is available in the separately issued State of New Jersey Divisions of Pensions and Benefits financial report at: <https://www.nj.gov/treasury/pensions/documents/financial/gasb/gasb68-tpaf23.pdf>

Pension Plan Fiduciary Net Position

Detailed information about the pension plan's fiduciary net position is available in the separately issued State of New Jersey Divisions of Pensions and Benefits financial report at: <https://www.nj.gov/treasury/pensions/gasb-notices.shtml>

HUDSON ARTS AND SCIENCE CHARTER SCHOOL
(County of Hudson)
Notes to the Basic Financial Statements
Year Ended June 30, 2024

7 Pension Plans – GASB 68 Disclosures - *continued*

Public Employees' Retirement System (PERS)

Summary of Significant Accounting Policies

For purposes of measuring the net pension liability, deferred outflows of resources and deferred inflows of resources related to pensions, and pension expense, information about the fiduciary net position of the PERS and additions to/deductions from PERS fiduciary net position have been determined on the same basis as they are reported by PERS. For this purpose, benefit payments (including refunds of employee contributions) are recognized when due and payable in accordance with the benefit terms. Investments are reported at fair value.

Pension Liabilities, Pension Expense, and Deferred Outflows of Resources and Deferred Inflows of Resources Related to Pension

At June 30, 2024, the Charter School reported a liability of \$2,504,591 for its proportionate share of the net pension liability. The net pension liability was measured as of June 30, 2023, and the total pension liability to calculate the net pension liability was determined by an actuarial valuation as of July 1, 2022, which was rolled forward to June 30, 2023. The total pension liability for the June 30, 2023 measurement date was determined by an actuarial valuation as of July 1, 2022. The Charter School's proportion of the net pension liability is based on the ratio of the contributions as an individual employer to total contributions to the PERS during the years ended June 30, 2023 and 2022. At June 30, 2023, the Charter School's proportion was 0.0172916787% which was a decrease of 0.0013922049% from its proportion measured as of June 30, 2022 which was 0.0158994738%.

For the year ended June 30, 2024, the Charter School recognized pension expense of \$231,108. At June 30, 2024, the Charter School reported deferred outflows of resources and deferred inflows of resources related to PERS from the following sources:

HUDSON ARTS AND SCIENCE CHARTER SCHOOL
(County of Hudson)
Notes to the Basic Financial Statements
Year Ended June 30, 2024

7 Pension Plans – GASB 68 Disclosures - continued

Public Employees’ Retirement System (PERS) - continued

Pension Liabilities, Pension Expense, and Deferred Outflows of Resources and Deferred Inflows of Resources Related to Pension - continued

	Deferred Outflows of Resources	Deferred Inflows of Resources
Differences between expected and actual experience	\$ 23,947	\$ 10,238
Changes in assumptions	5,502	151,789
Net difference between projected and actual earnings on pension plan investments	11,534	-
Changes in proportion and differences between Charter School's contributions and proportionate share of contributions	863,400	88,322
Subtotal	904,383	250,349
Charter School's contributions subsequent to the measurement date	231,108	-
Total	<u>\$ 1,135,491</u>	<u>\$ 250,349</u>

\$231,108 reported as deferred outflows of resources related to pensions resulting from school Charter School contributions subsequent to the measurement date (i.e. for the school year ending June 30, 2024, the plan measurement date is June 30, 2023) will be recognized as a reduction of the net pension liability measured as of June 30, 2024. Other amounts reported as deferred outflows of resources and deferred inflows of resources related to pensions will be recognized in pension expense as follows:

Year Ending June 30:	Pension Expense
2024	\$ 714,493
2025	398,802
2026	(557,300)
2027	99,735
2028	(1,696)
Thereafter	-
	<u>\$ 654,034</u>

HUDSON ARTS AND SCIENCE CHARTER SCHOOL
(County of Hudson)
Notes to the Basic Financial Statements
Year Ended June 30, 2024

7 Pension Plans – GASB 68 Disclosures - *continued*

Public Employees' Retirement System (PERS) - *continued*

Pension Liabilities, Pension Expense, and Deferred Outflows of Resources and Deferred Inflows of Resources Related to Pension – continued

	June 30, 2023	June 30, 2022
Collective deferred outflows of resources	\$ 1,101,221,923	\$ 1,715,543,211
Collective deferred inflows of resources	\$ 1,648,476,259	\$ 4,112,583,758
Collective net pension liability (Non-State Local Group)	\$ 14,484,374,047	\$ 15,091,376,611
Charter School's portion of the net pension liability	\$ 2,504,591	\$ 2,399,819
Charter School's proportion (percentage)	0.01729168%	0.01590192%

Actuarial Assumptions

The collective total pension liability for the June 30, 2023 measurement date was determined by an actuarial valuation as of July 1, 2022, which was rolled forward to June 30, 2023. This actuarial valuation used the following actuarial assumptions:

Inflation rate - price	2.75%
Inflation rate - wage	3.25%
Salary increases: thereafter	2.75%-6.55% based on years of service
Investment rate of return	7.00%

Pre-retirement mortality rates were based on the Pub-2010 General Below-Median Income Employee mortality table with an 82.2% adjustment for males and 101.4% adjustment for females, and with future improvement from the base year of 2010 on a generational basis. Post-retirement mortality rates were based on the Pub-2010 General Below-Median Income Healthy Retiree mortality table with a 91.4% adjustment for males and 99.7% adjustment for females, and with future improvement from the base year of 2010 on a generational basis. Disability retirement rates used to value disabled retirees were based on the Pub-2010 Non-Safety Disabled Retiree mortality table with a 127.7% adjustment for males and 117.2% adjustment for females, and with future improvement from the base year of 2010 on a generational basis. Mortality improvement is based on Scale MP-2021.

The actuarial assumptions used in the July 1, 2022 valuation were based on the results of an actuarial experience study for the period July 1, 2018 to June 30, 2021.

HUDSON ARTS AND SCIENCE CHARTER SCHOOL
(County of Hudson)
Notes to the Basic Financial Statements
Year Ended June 30, 2024

7 Pension Plans – GASB 68 Disclosures - *continued*

Public Employees' Retirement System (PERS) - *continued*

Long-Term Expected Rate of Return

In accordance with State statute, the long-term expected rate of return on plan investments (7.00% at June 30, 2023) is determined by the State Treasurer, after consultation with the Directors of the Division of Investment and Division of Pensions and Benefits, the board of trustees and the actuaries. The long-term expected rate of return was determined using a building block method in which best-estimate ranges of expected future real rates of return (expected returns, net of pension plan investment expense and inflation) are developed for each major asset class. These ranges are combined to produce the long-term expected rate of return by weighting the expected future real rates of return by the target asset allocation percentage and by adding expected inflation. Best estimates of arithmetic rates of return for each major asset class included in PERS's target asset allocation as of June 30, 2023 are summarized in the following table:

Asset Class	Target Allocation	Long Term Expected Real Rate of Return
US Equity	28.00%	8.98%
Non-US Developed Markets Equity	12.75%	9.22%
International Small Cap Equity	1.25%	9.22%
Emerging Markets Equity	5.50%	11.13%
Private Equity	13.00%	12.50%
Real Estate	8.00%	8.58%
Real Assets	3.00%	8.40%
High Yield	4.50%	6.97%
Private Credit	8.00%	9.20%
Investment Grade Credit	7.00%	5.19%
Cash Equivalents	2.00%	3.31%
U.S. Treasuries	4.00%	3.31%
Risk Mitigation Strategies	3.00%	6.21%

HUDSON ARTS AND SCIENCE CHARTER SCHOOL
(County of Hudson)
Notes to the Basic Financial Statements
Year Ended June 30, 2024

7 Pension Plans – GASB 68 Disclosures - *continued*

Public Employees' Retirement System (PERS) – *continued*

Discount Rate

The discount rate used to measure the total pension liability was 7.00% as of June 30, 2023. The projection of cash flows used to determine the discount rate assumed that contributions from plan members will be made at the current member contribution rates and that contributions from employers will be based on 100% of the actuarially determined contributions for the State employer and 100% of actuarially determined contributions for the local employers. Based on those assumptions, the plan's fiduciary net position was projected to be available to make projected future benefit payments of current plan members. Therefore, the long-term expected rate of return on plan investments was applied to projected benefit payments to determine the total pension liability.

HUDSON ARTS AND SCIENCE CHARTER SCHOOL
(County of Hudson)
Notes to the Basic Financial Statements
Year Ended June 30, 2024

7 Pension Plans – GASB 68 Disclosures - *continued*

Public Employees' Retirement System (PERS) - *continued*

Sensitivity of the Charter School's Proportionate Share of the Net Pension Liability to Changes in the Discount Rate

The following presents the collective net pension liability of the participating employers as of June 30, 2023, calculated using the discount rate as disclosed above as well as what the collective net pension liability would be if it was calculated using a discount rate that is 1-percentage point lower or 1-percentage-point higher than the current rate:

2023			
	1% Decrease (6.00%)	Current Discount Rate (7.00%)	1% Increase (8.00%)
Charter School's proportionate share of the pension liability	<u>\$ 3,287,933</u>	<u>\$ 2,504,591</u>	<u>\$ 1,876,952</u>
2022			
	1% Decrease (6.00%)	Current Discount Rate (7.00%)	1% Increase (8.00%)
Charter School's proportionate share of the pension liability	<u>\$ 3,108,696</u>	<u>\$ 2,399,449</u>	<u>\$ 1,833,467</u>

Pension Plan Fiduciary Net Position

Detailed information about the pension plan's fiduciary net position is available in the separately issued State of New Jersey Divisions of Pensions and Benefits financial report at: <http://www.nj.gov/treasury/pensions/financial-rprts-home.shtml>

HUDSON ARTS AND SCIENCE CHARTER SCHOOL
(County of Hudson)
Notes to the Basic Financial Statements
Year Ended June 30, 2024

8 Post Retirement Benefits

Plan Description and Benefits Provided

The Charter School is in a "special funding situation", as described in GASB Statement No. 75, in that OPEB contributions and expenses are legally required to be made by and are the sole responsibility of the State of New Jersey, not the Charter School.

The State of New Jersey reports a liability as a result of its statutory requirements to pay other post-employment (health) benefits for the State Health Benefit Local Education Retired Education Plan. The State Health Benefit Local Education Retired Employees Plan is a multiple-employer defined benefit OPEB plan that is administered on a pay-as-you-go basis. Accordingly, no assets are accumulated in a qualifying trust that meets the criteria in paragraph 4 of GASB Statement 75, *Accounting and Financial Reporting for Postemployment Benefits Other Than Pensions*. The State Health Benefits Local Education Retired Employees Plan provides medical, prescription drug, and Medicare Part B reimbursement to retirees and their covered dependents of local education employers.

The employer contributions for the participating local education employers are legally required to be funded by the State of New Jersey in accordance with N.J.S.A. 52:14-17.32f. According to N.J.S.A. 52: 14-17.32f, the State provides employer-paid coverage to employees who retire from a board of education or county college with 25 years or more of service credit in, or retires on a disability pension from, one or more of the following plans: the Teachers' Pension and Annuity Fund (TPAF), the Public Employees' Retirement System (PERS), the Police and Firemen Retirement System (PFRS), or the Alternate Benefit Program (ABP). Pursuant to Chapter 78, P.L. 2011, future retirees eligible for postretirement medical coverage who have less than 20 years of creditable service on June 28, 2011 will be required to pay a percentage of the cost of their health care coverage in retirement provided they retire with 25 years or more of pension service credit. The percentage of the premium for which the retiree will be responsible will be determined based on the retiree's annual retirement benefit and level of coverage.

The total non-employer OPEB liability does not include certain other postemployment benefit obligations that are provided by the local education employers. The reporting of these benefits, if any, is the responsibility of the individual education employers.

Employees Covered by Benefit Terms.

At June 30, 2023, the following employees were covered by the benefit terms:

Active plan member = 217,212

Inactive plan members entitled to but not yet receiving benefits = 152,383

Inactive plan members or beneficiaries currently receiving benefits = -0-

Total plan members = 369,595

HUDSON ARTS AND SCIENCE CHARTER SCHOOL
(County of Hudson)
Notes to the Basic Financial Statements
Year Ended June 30, 2024

8 Post Retirement Benefits – *continued*

Total Non-employer OPEB Liability

The State, a non-employer contributing entity, is the only entity that has a legal obligation to make employer contributions to OPEB for qualified retired PERS and TPAF participants. The Charter School's proportionate share percentage determined under paragraphs 193 and 203 through 205 of GASBS No. 75 is zero percent. Accordingly, the Charter School did not recognize any portion of the collective net OPEB liability on the Statement of Net Position. Accordingly, the following OPEB liability note information is reported at the State's level and is not specific to the board of education/board of trustees. Note that actual numbers will be published in the NJ State's ACFR (<https://www.nj.gov/treasury/omb/publications/archives.shtml>)

The total nonemployer OPEB liability as of June 30, 2023 was determined by an actuarial valuation as of June 30, 2022, which was rolled forward to June 30, 2023. The total nonemployer OPEB liability as of June 30, 2022 was determined by an actuarial valuation as of June 30, 2022.

Actuarial Assumptions and Other Inputs

The actuarial assumptions vary for each plan member depending on the pension plan the member is enrolled in. This actuarial valuation used the following actuarial assumptions, applied to all periods in the measurement.

Inflation Rate	2.50%	
	<u>TPAF/ABP</u>	<u>PERS</u>
Salary increases:		
Through 2029	2.75 to 5.65% based on years of service	2.75 to 6.55% based on years of service
Thereafter	2.75 to 5.65% based on years of service	2.75 to 6.55% based on years of service

HUDSON ARTS AND SCIENCE CHARTER SCHOOL
(County of Hudson)
Notes to the Basic Financial Statements
Year Ended June 30, 2024

8 Post Retirement Benefits – *continued*

Actuarial Assumptions and Other Inputs - *continued*

Preretirement mortality rates were based on the Pub-2010 Healthy “Teachers” (TPAF/ABP) and “General” (PERS) classification headcount-weighted mortality table with fully generational mortality improvement projections from the central year using Scale MP-2023. Postretirement mortality rates were based on the Pub-2010 “General” classification headcount-weighted mortality table with fully generational mortality improvement projections from the central year using Scale MP-2023. Disability mortality was based on the Pub-2010 “General” classification headcount-weighted disabled mortality table with fully generational mortality improvement projections from the central year using Scale MP-2023.

The actuarial assumptions used in the June 30, 2022 valuation were based on the results of actuarial experience studies for the periods July 1, 2015 - June 30, 2018, and July 1, 2014 - June 30, 2018 for TPAF and PERS, respectively.

100% of all retirees who currently have healthcare coverage are assumed to continue with that coverage. 100% of active members are considered to participate in the Plan upon retirement, having a coverage blend of 85% and 15% in PPO and HMO, respectively.

Health Care Trend Assumptions

For pre-Medicare medical benefits, the trend rate is initially 5.65% and decreases to a 4.50% long-term trend rate after seven years. For post-65 medical benefits, the actual fully-insured Medicare Advantage trend rates for fiscal year 2024 through 2024 are reflected. For PPO the trend is initially 5.74% in fiscal year 2025, increasing to 12.93% in fiscal year 2025 and decreases to 4.50% after 11 years. For HMO the trend is initially 6.01 % in fiscal year 2025, increasing to 15.23% in fiscal year 2025 and decreases to 4.5% after 11 years. For prescription drug benefits, the initial trend rate is 6.75% and decreases to a 4.50% long-term trend rate after seven years. For the Medicare Part B reimbursement, the trend rate is 5.00%

Discount Rate

The discount rate for June 30, 2023 was 2.16%. This represents the municipal bond return rate as chosen by the Division. The source is the Bond Buyer Go 20-Bond Municipal Bond Index, which includes tax-exempt general obligation municipal bonds with an average rating of AA/Aa or higher. As the long-term rate of return is less than the municipal bond rate, it is not considered in the calculation of the discount rate, rather the discount rate is set at the municipal bond rate.

HUDSON ARTS AND SCIENCE CHARTER SCHOOL
(County of Hudson)
Notes to the Basic Financial Statements
Year Ended June 30, 2024

8 Post Retirement Benefits – continued

Changes in the Total OPEB Liability Reported by the State of New Jersey

	Increase/(Decrease) Total OPEB Liability
Balance as of June 30, 2022 measurement date	<u>\$ 50,646,462,966</u>
Changes recognized for the fiscal year:	
Service cost	\$ 2,136,235,476
Interest on total OPEB liability	1,844,113,951
Changes of benefit terms	-
Difference between expected and actual experiences	(980,424,863)
Effect of changes of assumptions	105,539,463
Gross benefits paid by the State	(1,437,516,858)
Contributions from the members	<u>47,258,104</u>
Net changes	<u>\$ 1,715,205,273</u>
Balance as of June 30, 2023 measurement date	<u>\$ 52,361,668,239</u>

Sensitivity of Total Nonemployer OPEB Liability to Changes in the Discount Rate

The following presents the State's proportionate share of the OPEB liability attributable to the District calculated using the discount rate of 3.656%; as well as what the State's proportionate share of the OPEB liability attributable to the District that would be if it were calculated using a discount rate that is 1-percentage-point lower (2.65 percent) or 1-percentage-point higher (4.65 percent) than the current rate:

	2023		
	At 1% Decrease (2.65%)	At 1% Discount Rate (3.65%)	At 1% Increase (4.65%)
Total OPEB liability attributable to the Charter School	<u>\$ 4,139,026</u>	<u>\$ 3,530,603</u>	<u>\$ 3,042,110</u>
	2022		
	At 1% Decrease (2.54%)	At 1% Discount Rate (3.54%)	At 1% Increase (4.54%)
Total OPEB liability attributable to the Charter School	<u>\$ 3,794,601</u>	<u>\$ 3,228,363</u>	<u>\$ 2,774,551</u>

HUDSON ARTS AND SCIENCE CHARTER SCHOOL
(County of Hudson)
Notes to the Basic Financial Statements
Year Ended June 30, 2024

8 Post Retirement Benefits – continued

Sensitivity of Total Nonemployer OPEB Liability to Changes in the Healthcare Trend Rate

The following presents the total nonemployer OPEB Liability attributable to the Charter School as of June 30, 2023 and 2022, respectively, calculated using the healthcare trend rate as disclosed in this note, as well as what the total nonemployer OPEB liability attributable to the Charter School would be if it were calculated using a healthcare trend rate that is I-percentage-point lower or I-percentage-point higher than the current rate:

2023			
	<u>At 1% Decrease</u>	<u>Healthcare Cost Trend Rate</u>	<u>At 1% Increase</u>
Total OPEB liability attributable to the Charter School	<u>\$ 2,930,945</u>	<u>\$ 3,530,603</u>	<u>\$ 4,315,257</u>
2022			
	<u>At 1% Decrease</u>	<u>Healthcare Cost Trend Rate</u>	<u>At 1% Increase</u>
Total OPEB liability attributable to the Charter School	<u>\$ 2,668,439</u>	<u>\$ 3,228,363</u>	<u>\$ 3,963,857</u>

OPEB Expense and Deferred Outflows of Resources and Deferred Inflows of Resources Related to OPEB

For the fiscal year ended June 30, 2024 the Charter School recognized OPEB expense of \$1,190,485 as determined by the State of New Jersey Division of Pensions and Benefits. This expense and the related offsetting revenue are for benefits provided by the State through a defined benefit OPEB plan that meets the criteria in GASB Statement 75, in which there is a special funding situation.

In accordance with GASB Statement 75, as the Charter School's proportionate share of the OPEB liability is \$-0, there is no recognition of the allocation of the proportionate share of the deferred inflows and outflows of resources. At June 30, 2023 the State had deferred outflows of resources and deferred inflows of resources related to OPEB from the following sources:

HUDSON ARTS AND SCIENCE CHARTER SCHOOL
(County of Hudson)
Notes to the Basic Financial Statements
Year Ended June 30, 2024

8 Post Retirement Benefits – continued

OPEB Expense and Deferred Outflows of Resources and Deferred Inflows of Resources Related to OPEB - continued

	Deferred Outflows of Resources	Deferred Inflows of Resources
Differences between actual and expected experience	\$ 7,639,717,639	\$ 13,791,541,217
Net difference between expected and actual earnings on OPEB plan investments	-	-
Assumption changes	7,445,895,322	14,449,948,556
Subtotal	15,085,612,961	28,241,489,773
Contributions made in fiscal year ending June 30, 2024 after measurement date	TBD	N/A
Total	\$ TBD	\$ 28,241,489,773

Amounts reported as deferred outflows of resources and deferred inflows of resources related to OPEB will be recognized in OPEB expense as follows:

Measurement Period - Fiscal Year Ending June 30:	Total
2023	\$ (2,611,225,301)
2024	\$ (2,611,225,301)
2025	\$ (2,269,523,460)
2026	\$ (1,338,024,839)
2027	\$ (273,877,609)
Thereafter	\$ (4,052,000,302)
	\$ (13,155,876,812)

9 Deferred Compensation

The Charter School offers its employees a deferred compensation plan created in accordance with the IRS code 403(b). The plan which is administered by AXA Equitable permits participants to defer a portion of their salaries until future years.

HUDSON ARTS AND SCIENCE CHARTER SCHOOL
(County of Hudson)
Notes to the Basic Financial Statements
Year Ended June 30, 2024

10 Economic Dependency

The Charter School receives a substantial amount of its support from federal and state governments. A significant reduction in the level of support, if it were to occur, could have an effect on the Charter School's programs and activities.

11 Fund Balance Appropriated – General Fund (Exhibit B- 1)

Of the \$12,985,889 General Fund balance at June 30, 2024, \$75,000 is reserved for escrow cash account, \$12,910,889 is the net fund balance.

12 Contingent Liabilities

The Charter School participates in a number of federal and state programs that are fully or partially funded by grants received from other governmental units. Expenditures financed by grants are subject to audit by the appropriate grantor government. If expenditures are disallowed due to noncompliance with grant program regulations, the Charter School may be required to reimburse the grantor government. As of June 30, 2024, significant amounts of grant expenditures have not been audited by the various grantor agencies but the Charter School believes that disallowed expenditures, if any, based on subsequent audits will not have a material effect on any of the individual governmental funds or the overall financial position of the Charter School.

The Charter School's attorney's letter advises the following: "We were not engaged at the Audit Date or at the Effective Date to give substantive attention to, or represent the School in connection with, any overtly threatened or pending litigation against the School."

HUDSON ARTS AND SCIENCE CHARTER SCHOOL
(County of Hudson)
Notes to the Basic Financial Statements
Year Ended June 30, 2024

13 Risk Management

The Charter School is exposed to various risks of loss related to torts; theft of, damage to, and destruction of assets; errors and omissions; injuries to employees; and natural disasters.

Property and Liability Insurance - The Charter School maintains commercial insurance coverage for property, liability and surety bonds. A complete schedule of insurance coverage can be found in the Statistical Section (UNAUDITED) of this Annual Comprehensive Financial Report. **New Jersey Unemployment Compensation** - The Charter School has elected to fund its New Jersey Unemployment Compensation Insurance under the "Benefit Reimbursement Method". Under this plan, the Charter School is required to reimburse the New Jersey Unemployment Trust Fund For benefits paid to its former employees and charged to its account with the State. The Charter School is billed quarterly for amounts due to the State.

14 Interfund Receivables, Payables and Transfers

The composition of interfund balances as of June 30, 2024 is as follows:

Fund	Interfund Receivable	Interfund Payable
General Fund	\$ 236,495	\$ -
Special Revenue Fund	-	254,409
Enterprise Fund	17,914	-
Trust and Agency Fund	-	-
	<u>\$ 254,409</u>	<u>\$ 254,409</u>

The above balances are the results of revenues earned or other financing sources received in one fund which are due to another fund and/or expenditures paid by one fund on behalf of another fund and/or to cover cash balances which were in negative position. Liquidation of this interfund balances is expected within the next fiscal year.

15 Receivables

Receivables as of June 30, 2024 consisted of accounts, intergovernmental, grants and miscellaneous. All receivables are considered collectible in full. A summary of the principal items of receivables are as follows:

State aid	\$ 17,548
Federal aid	121,931
Other	387,251
Total receivables	<u>\$ 526,730</u>

HUDSON ARTS AND SCIENCE CHARTER SCHOOL
(County of Hudson)
Notes to the Basic Financial Statements
Year Ended June 30, 2024

16 Subsequent Events

The Charter School has evaluated all subsequent events occurring through the date of the independent auditor's report which is the date the financial statements were available to be issued. Based on this evaluation, the Charter School has determined that no subsequent event requires disclosure in the financial statements.

17 Risk and Uncertainties – COVID-19 and Its Impact

In December 2019, an outbreak of a novel strain of coronavirus (COVID-19) originated in Wuhan, China and has since spread to other countries, including the United States. On March 11, 2020, the World Health Organization characterized COVID-19 as a pandemic. In addition, as of March 21, 2020, New Jersey State Governor Phil Murphy ordered the closure of the physical location of every "non-life sustaining" and "non-essential" business.

The Charter School's operations are heavily dependent on both federal and state grant revenues. Its physical locations were closed from March 2020 through September 2020. The full impact of the COVID-19 outbreak continues to evolve as of the date of this report. As such it is uncertain as to the full impact that the pandemic will have on the Charter School's financial condition, liquidity, and future results of operations. Management is actively monitoring the situation on its financial condition, liquidity and operations. The rapid development and fluidity of this situation precludes any prediction as to the ultimate material adverse impact of the COVID-19 pandemic.

Nevertheless, the COVID-19 pandemic presents material uncertainty and risk with respect to the Charter School its performance, and its financial results. However, it should be noted that as of the date of this report, the Charter School's various federal and state grants have not been materially impacted.

HUDSON ARTS AND SCIENCE CHARTER SCHOOL
(County of Hudson)
Notes to the Basic Financial Statements
Year Ended June 30, 2024

18 Reconciliation of Government-Wide and Fund Financial Statements

Explanation of Certain Differences Between the Governmental Fund Balance Sheet (B-1) and the Government-wide Statement of Net Position (A-1).

The governmental fund balance sheet includes reconciliation between fund balance – total governmental funds and net position - governmental activities as reported in the Government-wide statement of net position. One element of that reconciliation explains that long-term liabilities, including deferred pension liability are not due and payable in the current period and therefore are not reported in the funds. The reconciliation is as follows:

Fund balance per B-1 as of June 30, 2024	\$ 12,989,776
Cost of capital assets net accumulated depreciation	1,658,081
Pension deferred outflows	904,383
Pension deferred inflows	(250,349)
Deferred pension liability as of June 30, 2024	(2,504,591)
Cost of right-of-use lease assets, net of accumulated amortization	6,421,091
Principal balance of lease liabilities	(7,361,268)
Net position (per A-1) as of June 30, 2024	<u>\$ 11,857,123</u>

20 ILearn Schools, Inc. – Charter Management Organization (CMO) Agreement

ILearn Schools, Inc. (a Charter Management Organization), is a New Jersey State non-profit organization that has a service agreement with the Charter School. The agreement which is renewable and renewed annually provides specialized educational and management services, including operational and administrative support to the Charter School. The services are considered qualitative in nature. It should be noted that Ilearn Schools, Inc. and the Charter School are governed by two separate and distinct Board of Trustees. The agreement provides that “No member of the Charter School Board shall have any interest in the CMO as an employee, member, or otherwise.” During the years ended June 30, 2024 ILearn Schools, Inc. was paid management fees in the amount of \$2,099,407. Further, ILearn Schools is the primary tenant of the Charter School’s middle school facilities at 114 Chestnut Street, Kearny, New Jersey. The Charter School is the sub-tenant.

Required Supplementary Information

Part II

Budgetary Comparison

HUDSON ARTS AND SCIENCE CHARTER SCHOOL
General Fund

C-1

Budget Comparison Schedule

Year ended June 30, 2024

	Original Budget	Budget Transfers	Final Budget	Actual	Variance Final to Actual
Revenues					
Local Sources:					
Local tax levy	\$ 7,660,227	\$ (267,707)	\$ 7,392,520	\$ 7,318,203	\$ (74,317)
Miscellaneous	31,896	81,000	112,896	674,215	561,319
Total revenues -local sources	<u>7,692,123</u>	<u>(186,707)</u>	<u>7,505,416</u>	<u>7,992,418</u>	<u>487,002</u>
State sources:					
Federal aid - SEMI revenue	-	-	-	-	-
State aid	8,616,839	166,687	8,783,526	8,831,082	47,556
Reimbursed TPAF-Social Security (non-budgeted)	-	-	-	325,926	325,926
TPAF - Post Retirement Medical (On-Behalf - Non-Budgeted)	-	-	-	311,845	311,845
Teacher's Pension & Annuity Fund (On-Behalf-Non-Budgeted)	-	-	-	1,145,801	1,145,801
Long Term Disability Insurance (On-Behalf-Non-Budgeted)	-	-	-	1,266	1,266
Total -state sources	<u>8,616,839</u>	<u>166,687</u>	<u>8,783,526</u>	<u>10,615,920</u>	<u>1,832,394</u>
Total revenues	<u>16,308,962</u>	<u>(20,020)</u>	<u>16,288,942</u>	<u>18,608,338</u>	<u>2,319,396</u>
Expenditures					
Current expense:					
Instruction					
Salaries of teachers	4,999,987	(135,646)	4,864,341	4,864,286	55
Other salaries for instruction	427,623	(83,027)	344,596	344,596	-
Purchased profesional technical services	14,500	40,840	55,340	55,340	-
Other purchased services	75,608	(11,020)	64,588	40,800	23,788
General educational supplies	485,958	(197,076)	288,882	249,169	39,713
Textbooks	61,705	64,562	126,267	126,267	-
Miscellaneous expenses	45,000	41,000	86,000	84,466	1,534
	<u>6,110,381</u>	<u>(280,367)</u>	<u>5,830,014</u>	<u>5,764,924</u>	<u>65,090</u>

HUDSON ARTS AND SCIENCE CHARTER SCHOOL
General Fund

C-1

Budget Comparison Schedule

Year ended June 30, 2024

	Original Budget	Budget Transfers	Final Budget	Actual	Variance Final to Actual
Administrative cost:					
Salaries	958,679	(113,617)	845,062	845,062	-
Total benefit costs	1,861,375	(139,177)	1,722,198	1,695,494	26,704
Professional /Technical service	1,834,477	300,450	2,134,927	2,132,197	2,730
Other purchased services	-	-	-	-	-
Communications and Telephones	28,270	(5,840)	22,430	21,123	1,307
Supplies and materials	28,500	11,444	39,944	39,873	71
Miscellaneous expenses	41,725	(6,350)	35,375	32,362	3,013
	<u>4,753,026</u>	<u>46,910</u>	<u>4,799,936</u>	<u>4,766,111</u>	<u>33,825</u>
Support services:					
Salaries	1,228,963	223	1,229,186	1,228,096	1,090
Purchased prof/tech service	198,723	135,406	334,129	303,390	30,739
Other purchased services	108,000	21,925	129,925	122,948	6,977
Rent on land and buildings	1,201,065	(57,500)	1,143,565	1,143,099	466
Insurance-fidelity, liability property	90,000	(4,453)	85,547	85,547	-
Supplies and materials	100,000	3,735	103,735	100,689	3,046
Energy & Utilities	170,000	33,301	203,301	176,573	26,728
Miscellaneous expenses	5,500	(579)	4,921	4,921	-
Transportation other than to/from school	25,000	30,800	55,800	45,614	10,186
Lease interest expense	-	-	-	-	-
Principal payments on lease liabilities	-	-	-	-	-
Food Services - Transfer to cover deficit	-	-	-	-	-
Total support services	<u>3,127,251</u>	<u>162,858</u>	<u>3,290,109</u>	<u>3,210,877</u>	<u>79,232</u>

HUDSON ARTS AND SCIENCE CHARTER SCHOOL
General Fund

C-1

Budget Comparison Schedule

Year ended June 30, 2024

	Original Budget	Budget Transfers	Final Budget	Actual	Variance Final to Actual
Capital outlay:					
Instructional equipment	50,000	(4,308)	45,692	45,692	-
Non-instructional equipment	50,000	(50,000)	-	-	-
Purchase land/improvements	50,000	102,445	152,445	110,000	42,445
Miscellaneous expenses	-	-	-	-	-
Total capital outlay	<u>150,000</u>	<u>48,137</u>	<u>198,137</u>	<u>155,692</u>	<u>42,445</u>
Reimbursed TPAF-Social Security (non-budgeted)	-	-	-	325,926	(325,926)
TPAF - Post Retirement Medical (On-Behalf - Non-Budgeted)	-	-	-	311,845	(311,845)
Teacher's Pension & Annuity Fund (On-Behalf-Non-Budgeted)	-	-	-	1,145,801	(1,145,801)
Long Term Disability Insurance (On-Behalf-Non-Budgeted)	-	-	-	1,266	(1,266)
Total expenditures	<u>14,140,658</u>	<u>(22,462)</u>	<u>14,118,196</u>	<u>15,682,442</u>	<u>(106,600)</u>
Excess (deficiency) of revenues over (under) expenditures	2,168,304	2,442	2,170,746	2,925,896	755,150
Other financing sources/(uses):					
Transfer to cover food deficit	-	-	-	-	-
Total other financing sources/(uses)	<u>-</u>	<u>-</u>	<u>-</u>	<u>-</u>	<u>-</u>
Excess (deficiency) of revenues and other financing sources over (under) expenditures and other financing uses	2,168,304	2,442	2,170,746	2,925,896	755,150
Fund balances, beginning of year	<u>10,059,993</u>	<u>-</u>	<u>10,059,993</u>	<u>10,059,993</u>	<u>-</u>
Fund balances, end of year	<u>\$ 12,228,297</u>	<u>\$ 2,442</u>	<u>\$ 12,230,739</u>	<u>\$ 12,985,889</u>	<u>\$ 755,150</u>

HUDSON ARTS AND SCIENCE CHARTER SCHOOL
Special Revenue Fund

C-2

Budget Comparison Schedule
Budgetary Basis
Year ended June 30, 2024

	Original Budget	Budget Transfers	Final Budget	Actual	Variance Final to Actual
Revenues					
Federal sources	\$ 975,382	\$ -	\$ 975,382	\$ 975,382	\$ -
	55,787		55,787	55,787	-
Local sources	32,318	-	32,318	32,318	-
Total revenues -all sources	<u>1,063,487</u>	<u>-</u>	<u>1,063,487</u>	<u>1,063,487</u>	<u>-</u>
Expenditures					
Current Expenditures:					
Instruction:					
Salaries of teachers	363,664	-	363,664	363,664	-
Purchased Prof. and technical services	221,291	-	221,291	221,291	-
Other purchased services	-	-	-	-	-
General supplies	224,791	-	224,791	224,791	-
Miscellaneous expenditures	-	-	-	-	-
Total instruction	<u>809,746</u>	<u>-</u>	<u>-</u>	<u>809,746</u>	<u>-</u>
Support services					
Support services salaries	9,534	-	9,534	9,534	-
Employee benefits	29,854	-	29,854	29,854	-
Purchased professional services	105,136	-	105,136	105,136	-
Other purchased services	7,532	-	7,532	7,532	-
Rental	-	-	-	-	-
Supplies	-	-	-	-	-
Miscellaneous expenditures	45,210	-	45,210	45,210	-
Total support services	<u>197,266</u>	<u>-</u>	<u>197,266</u>	<u>197,266</u>	<u>-</u>
Capital Outlay:					
Facilities acquisition and construction services					
Instructional equipment	-	-	-	-	-
Noninstructional equipment	-	-	-	-	-
Construction services	55,787	-	55,787	55,787	-
Total facilities acquisition and construction services	<u>55,787</u>	<u>-</u>	<u>55,787</u>	<u>55,787</u>	<u>-</u>
Total expenditures	<u>\$ 1,062,799</u>	<u>\$ -</u>	<u>\$ 253,053</u>	<u>\$ 1,062,799</u>	<u>\$ -</u>

Notes to Required Supplementary Information

HUDSON ARTS AND SCIENCE CHARTER SCHOOL

C-3

Note to Required Supplementary Information

Budget to GAAP Reconciliation

Year ended June 30, 2024

		<u>General Fund</u>	<u>Special Revenue Fund</u>
Sources/inflows of resources			
Actual amounts (budgetary basis) "revenue"			
from the budgetary comparison schedule:	[C-1]	\$ 18,608,338	
	[C-2]		\$ 1,063,487
Difference - budget to GAAP:			
Grant accounting budgetary basis differs from GAAP in that encumbrances are recognized as expenditures, and the related revenue is recognized.		-	-
Total revenues as reported on the statement of revenues, expenditures and changes in fund balances - governmental funds	[B-2]	<u>\$ 18,608,338</u>	<u>\$ 1,063,487</u>
Uses/outflows of resources			
Actual amounts (budgetary basis) "total outflows" from the budgetary comparison schedule			
	[C-1]	\$ 15,682,442	
	[C-2]		\$ 1,063,487
Differences - budget to GAAP			
Encumbrances for supplies and equipment ordered but not received are reported in the year the order is placed for budgetary purposes, but in the year the supplies are received for financial reporting purposes.			-
Transfers to and from other funds are presented as outflows of budgetary resources but are not expenditures for financial reporting purposes.			
Net transfer (outflows) to general fund		<u>-</u>	<u>-</u>
Total expenditures as reported on the statement of revenues, expenditures, and changes in fund balances - governmental funds	[B-2]	<u>\$ 15,682,442</u>	<u>\$ 1,063,487</u>

Note 1) The general fund budget basis of the use/outflow of resources is GAAP, therefore no reconciliation is required.

HUDSON ARTS AND SCIENCE CHARTER SCHOOL

L-1

Schedule of the Charter School's Proportionate Share of the Net Pension Liability - PERS
Last Six Fiscal Years
(Unaudited)

	2024	2023	2022	2021	2020	2019
Charter School's proportion of the net pension liability (assets)	0.0172916787%	0.0158994738%	0.0166693105%	0.0139037490%	0.0056206090%	0.0047889220%
Charter School's proportionate share of the net pension liability (assets)	\$ 2,504,591	\$ 2,399,449	\$ 1,974,730	\$ 2,267,338	\$ 1,013,731	\$ 942,929
Charter School's covered employee payroll	\$ 1,503,295	\$ 1,473,819	\$ 1,105,192	\$ 1,578,765	\$ 1,089,125	\$ 1,324,615
Charter School's proportionate share of the net pension liability (assets) as a percentage of its covered employee payroll	166.61%	162.80%	178.68%	143.61%	93.08%	71.19%
Plan fiduciary net position as a percentage of the total pension liability - local	65.23%	62.91%	70.33%	58.32%	56.27%	53.60%

Note

Until a full ten year trend is compiled, information will be presented for those years for which information is available.

HUDSON ARTS AND SCIENCE CHARTER SCHOOL

L-2

Schedule of the Charter School's Contributions - PERS
Last Six Fiscal Years
(Unaudited)

	2024	2023	2022	2021	2020	2019
Contractually required contribution	\$ 231,108	\$ 200,500	\$ 195,217	\$ 152,100	\$ 55,532	\$ 48,940
Contribution in relation to the contractually required contribution	(231,108)	(200,500)	(195,217)	(152,100)	(55,532)	(48,940)
Contribution deficiency (excess)	\$ -	\$ -	\$ -	\$ -	\$ -	\$ -
Charter School's covered employee payroll	\$ 1,503,295	\$ 1,473,819	\$ 1,105,192	\$ 1,578,765	\$ 1,089,125	\$ 1,324,615
Contributions as a percentage of covered employee payroll	15.37%	13.60%	17.66%	9.63%	5.10%	3.69%

Note

Until a full ten year trend is compiled, information will be presented for those years for which information is available.

HUDSON ARTS AND SCIENCE CHARTER SCHOOL

L-3

Schedule of the Charter School's Proportionate Share of the Net Pension Liability - TPAF
Last Six Fiscal Years
(Unaudited)

	2024	2023	Fiscal Year Ended June 30,		2020	2019
			2022	2021		
Charter School's proportion of the net pension liability (assets)**	N/A	N/A	N/A	N/A	N/A	N/A
Charter School's proportionate share of the net pension liability (assets)**	N/A	N/A	N/A	N/A	N/A	N/A
State's proportionate share of the net pension liability (assets) associated with the Charter School	\$ 12,686,063	\$ 14,547,966	\$ 10,672,017	\$ 10,652,315	\$ -	\$ -
Total	<u>\$ 12,686,063</u>	<u>\$ 14,547,966</u>	<u>\$ 10,672,017</u>	<u>\$ 10,652,315</u>	<u>\$ -</u>	<u>\$ -</u>
Charter School's covered employee payroll	\$ 3,697,848	\$ 3,625,341	\$ 2,692,205	\$ 3,088,944	\$ 2,050,225	\$ 2,413,251
Charter School's proportionate share of the net pension liability (assets) as a percentage of its covered employee payroll**	N/A	N/A	N/A	N/A	N/A	N/A
Plan fiduciary net position as a percentage of the total pension liability	34.68%	32.29%	35.52%	24.60%	26.95%	26.49%

**Note

TPAF is a special funding situation as defined by GASB Statement No. 68 in which the State of New Jersey is 100% responsible for contributions to the plan. Since the Charter School (employer) does not contribute directly to the plan there is no net pension liability to report in the financial statements of the Charter School.

HUDSON ARTS AND SCIENCE CHARTER SCHOOL

M-1

Schedule of the State's Proportionate Share of the Net OPEB Liability Associated with the Charter School
and Changes in the Total OPEB Liability and Related Ratios
Public Employee's Retirement System and Teachers' Pension and Annuity Fund
Last Six Fiscal Years

	For the Year Ended					
	2023	2022	2021	2020	2019	2018
Total OPEB Liability						
Service cost	\$ 807,497	\$ 1,185,313	\$ 1,345,832	\$ 442,080	\$ 334,806	\$ -
Interest cost	124,344	85,555	112,256	66,244	55,055	(508)
Effect of changes of benefit terms	-	-	(4,606)	-	-	-
Difference between expected and actual experiences	(542,975)	(1,421,773)	(1,298,360)	1,553,813	8,712	1,266,239
Changes of assumptions	7,116	(866,037)	4,269	776,968	22,159	(127,348)
Member contributions	3,186	2,719	2,870	2,244	1,352	1,026
Gross benefit payments	(96,928)	(84,745)	(88,426)	(74,050)	(45,622)	(29,674)
Net change in total OPEB liability	302,240	(1,098,968)	73,835	2,767,299	376,462	1,109,735
Total OPEB liability - beginning	3,228,363	4,327,331	4,253,496	1,486,197	1,109,735	-
Total OPEB liability, ending	\$ 3,530,603	\$ 3,228,363	\$ 4,327,331	\$ 4,253,496	\$ 1,486,197	\$ 1,109,735
Covered employee payroll - PERS and TPAF	\$ 1,028,467	\$ 940,425	\$ 1,040,278	\$ 894,968	\$ 496,090	\$ 328,276
Total OPEB liability as a percentage of covered employee payroll	343%	343%	416%	475%	300%	338%
State's proportionate share of the net OPEB liability (asset) associated with the Charter School	0.01%	0.01%	0.01%	0.01%	0.00%	0.00%
Charter School's contributions	\$ -	\$ -	\$ -	\$ -	\$ -	\$ -

** Information not available.

Until a full ten year trend is compiled, information will be presented for those years for which information is available.

HUDSON ARTS AND SCIENCE CHARTER SCHOOL
(County of Hudson)
Notes to Required Supplementary Information
Year Ended June 30, 2024

1. Pension – Public Employees’ Retirement System (PERS)

Benefit Changes - There were none.

Changes of Assumptions - There were none.

2. Pension – Teachers’ Pension and Annuity Fund (TPAF)

Benefit Changes - There were none.

Changes of Assumptions

In the July 1, 2022 actuarial valuation the salary increases were 2.75 – 4.25% based on years of service while in the July 1, 2021 actuarial valuation the salary increases were 2.75% – 5.65% based on years of service.

3. Other Post-Retirement Benefit Plan – Public Employees’ Retirement System (PERS) and Teachers’ Pension and Annuity Fund (TPAF)

Benefit Changes - There were none.

Changes of Assumptions

The discount rate for June 30, 2023 was 3.65%. The discount rate for June 30, 2022 was 3.54%, a change of .11%.

The health care trend rates in the valuation as of June 30, 2023 were based on the following:

For pre-Medicare medical benefits, the trend rate is initially 6.50% and decreases to a 4.50% long term trend rate after nine years. For post-65 medical benefits PPO, the trend is increasing to 14.8% in fiscal year 2026 and decreases to 4.50% in fiscal year 2033. For HMO the trend is increasing to 17.4% in fiscal year 2026 and decreases to 4.50% in fiscal year 2033. For prescription drug benefits, the initial trend rate is 9.50% and decreases to a 4.50% long term rate after seven years. For the Medicare Part B reimbursement, the trend rate is 5.00%.

The health care trend rates in the valuation as of June 30, 2022 were based on the following:

For pre-Medicare medical benefits, the trend rate is initially 6.25% and decreases to a 4.50% long term trend rate after eight years. For post-65 medical benefits PPO, the trend is initially -1.99% in fiscal year 2023, increasing to 13.44% in fiscal year 2026 and decreases to 4.5% in fiscal year 2033. For HMO the trend is initially -3.54% in fiscal year 2023, increasing to 15.19% in fiscal year 2026 and decreases to 4.50% in fiscal year 2033. For prescription drug benefits, the initial trend rate is 8.00% and decreases to a 4.50% long term rate after eight years.

Other Supplementary Information

School Level Schedules

Special Revenue Fund

HUDSON ARTS AND SCIENCE CHARTER SCHOOL
Special Revenue Fund

E-1

Combining Schedule of Program, Revenue and Expenditures
Budgetary Basis

Year ended June 30, 2024

	Title IA 2023-2024	Title IA SIA 2023-2024	Title IIA 2023-2024	Title IIIA 2023-2024	Title IIIA Immigrants 2023-2024	L.D.E.A. Basic 2023-2024	L.D.E.A. Preschool 2023-2024	CRRSA ESSER II Learning Acceleration 2020-2023	CRRSA ESSER II Mental Health 2020-2023	ARP ESSER III 2020-2024	ARP ESSER III Summer Learning 2020-2024	ARP ESSER III After School 2020-2024	High Impact Tutoring Grant 2023-2024	Emergent Needs Construction Svs 2021-2022	PreSchool & Charter Security Grant 2021-2022	Student Activity Fund	Total
Revenues																	
Federal sources	\$ 364,326	\$ 9,065	\$ 29,996	\$ 25,190	\$ 639	\$ 194,550	\$ 3,682	\$ 18,047	\$ 2,355	\$ 193,892	\$ 28,930	\$ 7,710	\$ 97,000	\$ -	\$ -	\$ -	\$ 975,382
State sources	-	-	-	-	-	-	-	-	-	-	-	-	-	26,979	28,808	-	55,787
Local sources	-	-	-	-	-	-	-	-	-	-	-	-	-	-	-	32,318	32,318
Total revenues -all sources	\$ 364,326	\$ 9,065	\$ 29,996	\$ 25,190	\$ 639	\$ 194,550	\$ 3,682	\$ 18,047	\$ 2,355	\$ 193,892	\$ 28,930	\$ 7,710	\$ 97,000	\$ 26,979	\$ 28,808	\$ 32,318	\$ 1,063,487
Expenditures																	
Instruction																	
Salaries of teachers	\$ 143,488	\$ 2,328	\$ -	\$ 1,800	\$ -	\$ 111,055	\$ 2,244	\$ 13,628	\$ -	\$ 55,121	\$ 26,838	\$ 7,162	\$ -	\$ -	\$ -	\$ -	363,664
Purchased Prof. and technical services	-	-	-	-	-	-	-	-	-	124,291	-	-	97,000	-	-	-	221,291
Other purchased services	-	-	-	-	-	-	-	-	-	-	-	-	-	-	-	-	-
General supplies	196,861	6,559	-	20,732	639	-	-	-	-	-	-	-	-	-	-	-	224,791
Miscellaneous expenditures	-	-	-	-	-	-	-	-	-	-	-	-	-	-	-	-	-
Total instruction	340,349	8,887	-	22,532	639	111,055	2,244	13,628	-	179,412	26,838	7,162	97,000	-	-	-	809,746
Support services																	
Support services salaries	-	-	-	-	-	-	-	-	-	9,534	-	-	-	-	-	-	9,534
Employee benefits	10,977	178	-	138	-	8,495	1,438	1,042	-	4,946	2,092	548	-	-	-	-	29,854
Purchased professional services	13,000	-	17,136	-	-	75,000	-	-	-	-	-	-	-	-	-	-	105,136
Other purchased services	-	-	-	1,800	-	-	-	3,377	2,355	-	-	-	-	-	-	-	7,532
Rental	-	-	-	-	-	-	-	-	-	-	-	-	-	-	-	-	-
Supplies	-	-	-	-	-	-	-	-	-	-	-	-	-	-	-	-	-
Miscellaneous expenditures	-	-	12,860	720	-	-	-	-	-	-	-	-	-	-	-	31,630	45,210
Total support services	23,977	178	29,996	2,658	-	83,495	1,438	4,419	2,355	14,480	2,092	548	-	-	-	31,630	197,266
Facilities acquisition and construction services																	
Instructional equipment	-	-	-	-	-	-	-	-	-	-	-	-	-	-	-	-	-
Noninstructional equipment	-	-	-	-	-	-	-	-	-	-	-	-	-	-	-	-	-
Construction services	-	-	-	-	-	-	-	-	-	-	-	-	-	26,979	28,808	-	55,787
Total facilities acquisition and construction services	-	-	-	-	-	-	-	-	-	-	-	-	-	26,979	28,808	-	55,787
Total expenditures	\$ 364,326	\$ 9,065	\$ 29,996	\$ 25,190	\$ 639	\$ 194,550	\$ 3,682	\$ 18,047	\$ 2,355	\$ 193,892	\$ 28,930	\$ 7,710	\$ 97,000	\$ 26,979	\$ 28,808	\$ 31,630	\$ 1,062,799
Excess (deficiency) of revenues over (under) expenditures	-	-	-	-	-	-	-	-	-	-	-	-	-	-	-	688	688
Fund balances, beginning of year	-	-	-	-	-	-	-	-	-	-	-	-	-	-	-	3,199	3,199
Prior period adjustment	-	-	-	-	-	-	-	-	-	-	-	-	-	-	-	-	-
Fund balances, beginning of year (restated)	-	-	-	-	-	-	-	-	-	-	-	-	-	-	-	3,199	3,199
Fund balances, end of year	\$ -	\$ -	\$ -	\$ -	\$ -	\$ -	\$ -	\$ -	\$ -	\$ -	\$ -	\$ -	\$ -	\$ -	\$ -	\$ 3,887	\$ 3,887

Capital Projects Fund

Enterprise Fund

HUDSON ARTS AND SCIENCE CHARTER SCHOOL
Enterprise Funds

G-1

Combining Statement of Net Position

June 30, 2024

	<u>Food Services</u>	<u>After Care Program</u>	<u>Total</u>
Assets			
Current assets:			
Cash and cash equivalents	\$ 144,469	\$ 22,964	\$ 167,433
Accounts receivable:	-	-	-
Federal	23,687	-	23,687
State	1,342	-	1,342
Other	-	1,992	1,992
Inventories	6,391	-	6,391
Interfund receivable - general fund	45,595	(27,681)	17,914
Total current assets	<u>221,484</u>	<u>(2,725)</u>	<u>218,759</u>
Noncurrent assets:			
Machinery and equipment	54,620	-	54,620
Less accumulated depreciation	<u>(54,620)</u>	<u>-</u>	<u>(54,620)</u>
Total noncurrent assets	<u>-</u>	<u>-</u>	<u>-</u>
Total assets	<u>\$ 221,484</u>	<u>\$ (2,725)</u>	<u>\$ 218,759</u>
Liabilities			
Current liabilities:			
Interfund payable - general fund	\$ -	\$ -	\$ -
Accounts payable	<u>-</u>	<u>-</u>	<u>-</u>
Total current liabilities	<u>\$ -</u>	<u>\$ -</u>	<u>\$ -</u>
Net position			
Unrestricted	221,484	(2,725)	218,759
Total net position	<u>\$ 221,484</u>	<u>\$ (2,725)</u>	<u>\$ 218,759</u>

HUDSON ARTS AND SCIENCE CHARTER SCHOOL
Enterprise Fund

G-2

Combining Statement of Revenues, Expenditures and Changes in Net Position

Year ended June 30, 2024

	<u>Food Services</u>	<u>After Care Program</u>	<u>Total</u>
Operating revenues:			
Charges for services:			
Daily sales - reimbursable programs	\$ -	\$ -	\$ -
Daily sales - nonreimbursable programs	103,912	44,541	148,453
Miscellaneous revenue	-	-	-
Total operating revenues	<u>103,912</u>	<u>44,541</u>	<u>148,453</u>
Operating expenses:			
Cost of sales - reimbursable programs	575,822	-	575,822
Cost of sales - nonreimbursable programs	-	-	-
Salaries	53,268	84,184	137,452
Employee benefits	-	-	-
Professional /technical service	-	-	-
Other purchased services	10,010	-	10,010
Supplies and materials	12,031	225	12,256
Depreciation	-	-	-
Miscellaneous	-	233	233
Total operating expenses	<u>651,131</u>	<u>84,642</u>	<u>735,773</u>
Operating income (loss)	<u>(547,219)</u>	<u>(40,101)</u>	<u>(587,320)</u>
Nonoperating revenues:			
State sources:			
State School Lunch Program	11,851	-	11,851
State School Lunch Program - NJEIE	5,201	-	5,201
State School Breakfast Program	4,790	-	4,790
State School Breakfast Program - NJEIE	472	-	472
Federal sources:	-	-	-
National School Lunch Program	355,363	-	355,363
Healthy, Hunger Free Kids Act	8,394	-	8,394
National School Breakfast Program	74,028	-	74,028
After School Snacks	61,735	-	61,735
Total nonoperating revenues	<u>521,834</u>	<u>-</u>	<u>521,834</u>
Net income/(loss) before contributions & transfers	(25,385)	(40,101)	(65,486)
Other financing sources:			
Transfer in/(out) - board contribution	<u>-</u>	<u>-</u>	<u>-</u>
	<u>-</u>	<u>-</u>	<u>-</u>
Change in net position	(25,385)	(40,101)	(65,486)
Total net position-beginning of year	<u>246,869</u>	<u>37,376</u>	<u>284,245</u>
Total net position-end of year	<u>\$ 221,484</u>	<u>\$ (2,725)</u>	<u>\$ 218,759</u>

HUDSON ARTS AND SCIENCE CHARTER SCHOOL
Enterprise Fund

G-3

Statement of Cash Flows

Year ended June 30, 2024

	Food Services	After Care Program	Total
	<hr/>	<hr/>	<hr/>
Cash flows from operating activities			
Operating loss	\$ (547,219)	\$ (40,101)	\$ (587,320)
Adjustment to reconcile operating loss to net cash used in operating activities:			
Depreciation expense	-		-
Changes in assets and liabilities:			
Accounts receivable	6,953	-	6,953
Due to/(from) general fund	108,543	13,594	122,137
Accounts payable	(1,635)	-	(1,635)
Net cash used in operating activities	<hr/> (433,358) <hr/>	<hr/> (26,507) <hr/>	<hr/> (459,865) <hr/>
Cash flows from noncapital financing activities			
Cash received from state reimbursements	22,314	-	22,314
Cash received from federal reimbursements	499,520	-	499,520
Operating subsidies and transfers from other funds	-	-	-
Net cash provided by noncapital financing activities	<hr/> 521,834 <hr/>	<hr/> - <hr/>	<hr/> 521,834 <hr/>
Cash flows from investing activities			
Net change in cash and cash equivalents	88,476	(26,507)	61,969
Cash and cash equivalents, beginning	55,993	49,471	105,464
Cash and cash equivalents, ending	<hr/> \$ 144,469 <hr/>	<hr/> \$ 22,964 <hr/>	<hr/> \$ 167,433 <hr/>

Fiduciary Fund
Not Applicable

Long Term Debt

Statistical Section

HUDSON ARTS AND SCIENCE CHARTER SCHOOL STATISTICAL SECTION

J SERIES

Contents

Financial Trends

These schedules contain trend information to help the reader understand how the charter school's financial performance and wellbeing have changed over time.

Revenue Capacity (Not Applicable to Charter School)

These schedules contain information to help the reader assess the district's most significant local revenue source, the property tax.

Debt Capacity

These schedules present information to help the reader assess the affordability of the charter school's current levels of outstanding debt and the charter school's ability to issue additional debt in the future.

Demographic and Economic Information

These schedules offer demographic and economic indicators to help the reader understand the environment within which the charter school's financial activities take place.

Operating Information

These schedules contain service and infrastructure data to help the reader understand how the information in the charter school's financial report relates to the services the charter school provides and the activities it performs.

Charter School Performance Framework Financial Indicators

These schedules contain summary information for the past three (3) years that seek to present the Charter School's financial and sustainability indicators.

Sources:

Unless otherwise noted, the information in these schedules is derived from the Annual Comprehensive Financial Reports (ACFR) the relevant year.

HUDSON ARTS AND SCIENCE CHARTER SCHOOL
County of Hudson, New Jersey

J-1

Net Assets By Component
Last Eight Fiscal Years
(accrual basis of accounting)
(Unaudited)

	Fiscal Year Ended June 30,							
	2024	2023	2022	2021	2020	2019	2018	2017
Governmental activities								
Invested in capital assets, net of related debt	\$ 1,658,081	\$ 1,751,012	\$ 721,838	\$ 981,023	\$ 223,743	\$ 48,157	\$ 41,542	\$ -
Restricted	-	-	-	-	-	-	-	-
Unrestricted	11,135,332	8,605,711	5,139,702	3,742,031	1,158,573	1,136,481	1,261,412	597,782
Total governmental activities net position	<u>\$ 12,793,413</u>	<u>\$ 10,356,723</u>	<u>\$ 5,861,540</u>	<u>\$ 4,723,054</u>	<u>\$ 1,382,316</u>	<u>\$ 1,184,638</u>	<u>\$ 1,302,954</u>	<u>\$ 597,782</u>
Business-type activities								
Invested in capital assets, net of related debt	\$ -	\$ -	\$ -	\$ -	\$ -	\$ -	\$ -	\$ -
Restricted	-	-	-	-	-	-	-	-
Unrestricted	218,759	284,245	393,865	363,050	74,621	56,888	69,249	28,078
Total business-type activities	<u>\$ 218,759</u>	<u>\$ 284,245</u>	<u>\$ 393,865</u>	<u>\$ 363,050</u>	<u>\$ 74,621</u>	<u>\$ 56,888</u>	<u>\$ 69,249</u>	<u>\$ 28,078</u>
School-wide								
Invested in capital assets, net of related debt	\$ 1,658,081	\$ 1,751,012	\$ 721,838	\$ 981,023	\$ 223,743	\$ 48,157	\$ 41,542	\$ -
Restricted	-	-	-	-	-	-	-	-
Unrestricted	11,354,091	8,889,956	5,533,567	4,105,081	1,233,194	1,193,369	1,330,661	625,860
Total charter school net position	<u>\$ 13,012,172</u>	<u>\$ 10,640,968</u>	<u>\$ 6,255,405</u>	<u>\$ 5,086,104</u>	<u>\$ 1,456,937</u>	<u>\$ 1,241,526</u>	<u>\$ 1,372,203</u>	<u>\$ 625,860</u>

HUDSON ARTS AND SCIENCE CHARTER SCHOOL
County of Hudson, New Jersey

J-2

Changes In Net Position
Last Eight Fiscal Years
(accrual basis of accounting)
(Unaudited)

	Fiscal Year Ended June 30,							
	2024	2023	2022	2021	2020	2019	2018	2017
Expenses								
Governmental activities								
Instruction								
Regular	\$ 6,574,670	\$ 5,411,718	\$ 4,400,227	\$ 3,638,516	\$ 4,179,551	\$ 3,487,324	\$ 2,290,330	\$ 1,699,885
Support Services:								
General administration	5,958,898	4,234,537	5,643,582	5,564,627	4,435,093	3,167,698	1,569,593	927,782
School administrative services	3,406,877	4,010,956	3,467,332	2,759,446	3,235,220	3,015,841	1,145,246	1,132,272
On-behalf TPAF/FICA Reimbursements	1,266	1,202	1,202	-	-	-	-	-
Capital outlay	-	-	-	-	-	(1,836)	62,666	125,079
Unallocated depreciation	304,410	318,687	292,928	72,577	97,337	-	-	-
Total governmental activities expenses	16,246,121	13,977,100	13,805,271	12,035,166	11,947,201	9,669,027	5,067,835	3,885,018
Business-type activities:								
Food service	651,131	677,450	697,570	482,814	598,688	434,227	258,935	134,719
Child Care	84,642	80,196	375	-	-	-	-	-
Total business-type activities expense	735,773	757,646	697,945	482,814	598,688	434,227	258,935	134,719
Total charter school expenses	\$ 16,981,894	\$ 14,734,746	\$ 14,503,216	\$ 12,517,980	\$ 12,545,889	\$ 10,103,254	\$ 5,326,770	\$ 4,019,737
Program Revenues								
Governmental activities:								
Charges for services:								
Operating grants and contributions	\$ 1,062,799	\$ 1,273,481	\$ 1,525,233	\$ 425,240	\$ 519,732	\$ 236,537	\$ 182,450	\$ 81,139
Capital grants and contributions	-	-	-	-	-	-	-	-
Total governmental activities program revenues	1,062,799	1,273,481	1,525,233	425,240	519,732	236,537	182,450	81,139
Business-type activities:								
Charges for services								
Food service	103,912	99,006	1,146	5,698	163,650	124,686	103,613	16,942
Child care	44,541	44,040	63,217	-	-	-	-	-
Operating grants and contributions	521,834	504,980	654,141	816,355	452,771	297,180	196,493	145,855
Capital grants and contributions	-	-	-	-	-	-	-	-
Total business type activities program revenues	670,287	648,026	718,504	822,053	616,421	421,866	300,106	162,797
Total charter school program revenues	\$ 1,733,086	\$ 1,921,507	\$ 2,243,737	\$ 1,247,293	\$ 1,136,153	\$ 658,403	\$ 482,556	\$ 243,936

HUDSON ARTS AND SCIENCE CHARTER SCHOOL
County of Hudson, New Jersey

J-2

Changes In Net Position
Last Eight Fiscal Years
(accrual basis of accounting)
(Unaudited)

	Fiscal Year Ended June 30,							
	<u>2024</u>	<u>2023</u>	<u>2022</u>	<u>2021</u>	<u>2020</u>	<u>2019</u>	<u>2018</u>	<u>2017</u>
Net (Expense)/Revenue								
Governmental activities	\$ (15,183,322)	\$ (12,703,619)	\$ (12,280,038)	\$ (11,609,926)	\$ (11,427,469)	\$ (9,432,490)	\$ (4,885,385)	\$ (3,803,879)
Business-type activities	(65,486)	(109,620)	20,559	339,239	17,733	(12,361)	41,171	28,078
Total charter school-wide net expense	<u>\$ (15,248,808)</u>	<u>\$ (12,813,239)</u>	<u>\$ (12,259,479)</u>	<u>\$ (11,270,687)</u>	<u>\$ (11,409,736)</u>	<u>\$ (9,444,851)</u>	<u>\$ (4,844,214)</u>	<u>\$ (3,775,801)</u>
General Revenues and Other Changes in Net Position								
Governmental activities:								
Property taxes levied for general purposes, net	\$ 7,318,203	\$ 6,906,403	\$ 5,791,721	\$ 9,285,239	\$ 9,806,194	\$ 8,081,192	\$ 5,021,756	\$ 3,583,209
Grants and contributions	10,615,920	9,052,444	7,496,442	4,299,999	1,842,360	1,210,525	539,032	645,173
Miscellaneous income	674,215	1,325,056	59,275	1,406,321	51,593	22,457	29,769	173,279
Transfers	-	-	-	-	-	-	-	-
Total governmental activities	<u>18,608,338</u>	<u>17,283,903</u>	<u>13,347,438</u>	<u>14,991,559</u>	<u>11,700,147</u>	<u>9,314,174</u>	<u>5,590,557</u>	<u>4,401,661</u>
Business-type activities:								
Transfers	-	-	-	10,987	-	-	-	-
Total business-type activities	<u>-</u>	<u>-</u>	<u>-</u>	<u>10,987</u>	<u>-</u>	<u>-</u>	<u>-</u>	<u>-</u>
Total charter school-wide	<u>\$ 18,608,338</u>	<u>\$ 17,283,903</u>	<u>\$ 13,347,438</u>	<u>\$ 15,002,546</u>	<u>\$ 11,700,147</u>	<u>\$ 9,314,174</u>	<u>\$ 5,590,557</u>	<u>\$ 4,401,661</u>
Change in Net Position								
Governmental activities	\$ 3,425,016	\$ 4,580,284	\$ 1,067,400	\$ 3,392,620	\$ 272,678	\$ (118,316)	\$ 705,172	\$ 597,782
Business-type activities	(65,486)	(109,620)	20,559	339,239	17,733	(12,361)	41,171	28,078
Total charter school	<u>\$ 3,359,530</u>	<u>\$ 4,470,664</u>	<u>\$ 1,087,959</u>	<u>\$ 3,731,859</u>	<u>\$ 290,411</u>	<u>\$ (130,677)</u>	<u>\$ 746,343</u>	<u>\$ 625,860</u>

HUDSON ARTS AND SCIENCE CHARTER SCHOOL
County of Hudson, New Jersey

J-3

Fund Balances - Governmental Funds
Last Eight Fiscal Years
(modified accrual basis of accounting)
(Unaudited)

	Fiscal Year Ended June 30,							
	<u>2024</u>	<u>2023</u>	<u>2022</u>	<u>2021</u>	<u>2020</u>	<u>2019</u>	<u>2018</u>	<u>2017</u>
General Fund								
Restricted	\$ 12,985,889	\$ 10,059,993	\$ 6,290,316	\$ 93,272	\$ 81,911	\$ -	\$ 400	\$ -
Unreserved		-	-	4,531,650	1,562,080	1,054,294	1,254,397	612,744
Total general fund	<u>\$ 12,985,889</u>	<u>\$ 10,059,993</u>	<u>\$ 6,290,316</u>	<u>\$ 4,624,922</u>	<u>\$ 1,643,991</u>	<u>\$ 1,054,294</u>	<u>\$ 1,254,797</u>	<u>\$ 612,744</u>
All Other Governmental Funds								
Reserved	\$ -	\$ -	\$ -	\$ -	\$ -	\$ -	\$ -	\$ -
Special revenue fund	3,887	3,199	3,914	3,536	-	-	-	-
Unreserved, reported in:								
Special revenue fund	-	-	-	-	-	-	-	-
Capital projects fund	-	-	-	-	-	-	-	-
Debt service fund	-	-	-	-	-	-	-	-
Permanent fund	-	-	-	-	-	-	-	-
Total all other governmental funds	<u>\$ 3,887</u>	<u>\$ 3,199</u>	<u>\$ 3,914</u>	<u>\$ 3,536</u>	<u>\$ -</u>	<u>\$ -</u>	<u>\$ -</u>	<u>\$ -</u>

Source: Charter School's Records

HUDSON ARTS AND SCIENCE CHARTER SCHOOL
County of Hudson, New Jersey

J-4

Changes in Fund Balances - Governmental Funds
Last Eight Fiscal Years
(Unaudited)

Function					Fiscal Year Ended June 30,				
					2021	2020			
	2024	2023	2022				2019	2018	2017
Revenues									
Local tax levy	\$ 7,318,203	\$ 6,906,403	\$ 5,791,721	\$ 5,054,495	\$ 5,106,254	\$ 4,405,297	\$ 3,011,140	\$ 2,092,330	
Miscellaneous	674,215	1,325,056	59,275	1,406,458	51,593	22,457	29,759	11,096	
State sources	10,671,707	9,247,010	7,510,268	6,509,425	6,116,208	4,817,807	2,427,577	1,822,843	
Federal sources	975,382	1,065,846	1,504,867	1,502,790	409,083	305,150	304,521	394,348	
Total revenue	<u>19,639,507</u>	<u>18,544,315</u>	<u>14,866,131</u>	<u>14,473,168</u>	<u>11,683,138</u>	<u>9,550,711</u>	<u>5,772,997</u>	<u>4,320,617</u>	
Expenditures									
Instruction	6,574,670	5,411,718	4,400,227	3,973,627	4,166,867	3,433,746	2,367,022	1,710,771	
Administration	4,766,111	3,256,197	2,928,216	3,820,200	3,587,263	3,002,038	1,453,020	874,709	
Support Services	3,408,143	4,012,158	3,468,534	2,724,273	3,199,011	2,999,218	1,128,623	1,117,955	
Capital Outlay	211,479	494,862	886,712	1,025,541	140,300	316,212	182,289	166,621	
Total expenditures	<u>14,960,403</u>	<u>13,174,935</u>	<u>11,683,689</u>	<u>11,543,641</u>	<u>11,093,441</u>	<u>9,751,214</u>	<u>5,130,954</u>	<u>3,870,056</u>	
(Excess of expenditures over revenues)/									
Excess of revenues over expenditures	<u>4,679,104</u>	<u>5,369,380</u>	<u>3,182,442</u>	<u>2,929,527</u>	<u>589,697</u>	<u>(200,503)</u>	<u>642,043</u>	<u>450,561</u>	
Other (uses)/financing									
Transfers in/(out)	<u>-</u>	<u>-</u>	<u>-</u>	<u>51,541</u>	<u>-</u>	<u>-</u>	<u>-</u>	<u>-</u>	
Net change in fund balances	<u>\$ 4,679,104</u>	<u>\$ 5,369,380</u>	<u>\$ 3,182,442</u>	<u>\$ 2,981,068</u>	<u>\$ 589,697</u>	<u>\$ (200,503)</u>	<u>\$ 642,043</u>	<u>\$ 450,561</u>	

Source: Charter School's Records

HUDSON ARTS AND SCIENCE CHARTER SCHOOL
County of Hudson, New Jersey

J-5

General Fund Other Local Revenue by Source
Last Eight Fiscal Years
(Unaudited)

Function	Fiscal Year Ended June 30,							
	2024	2023	2022	2021	2020	2019	2018	2017
Other local revenues								
Miscellaneous	\$ 674,215	\$ 1,325,056	\$ 59,275	\$ 63,671	\$ 51,593	\$ 22,457	\$ 29,759	\$ 11,096
Total other local revenue	<u>\$ 674,215</u>	<u>\$ 1,325,056</u>	<u>\$ 59,275</u>	<u>\$ 63,671</u>	<u>\$ 51,593</u>	<u>\$ 22,457</u>	<u>\$ 29,759</u>	<u>\$ 11,096</u>

Source: Charter School's Records

HUDSON ARTS AND SCIENCE CHARTER SCHOOL
County of Hudson, New Jersey

J-10

Ratio of Outstanding Debt By Type
Last Eight Fiscal Years
(Unaudited)

Fiscal Year Ended June 30,	Governmental Activities				Business-Type Activities	Total Charter School	Percentage of Personal Income ^a	Per Capita ^a
	General Obligation Bonds ^b	Certificates of Participation	Capital Leases	Bond Anticipation Notes (BANs)	Capital Leases			
2017	\$ -	\$ -	\$ -	\$ -	\$ -	\$ -	0.00%	-
2018	-	-	-	-	-	-	0.00%	-
2019	-	-	-	-	-	-	0.00%	-
2020	-	-	-	-	-	-	0.00%	-
2021	-	-	-	-	-	-	0.00%	-
2022	-	-	-	-	-	-	0.00%	-
2023	-	-	-	-	-	-	0.00%	-
2024	-	-	-	-	-	-	0.00%	-

NO LONG TERM DEBT FOR THE CHARTER SCHOOL

Note: Details regarding the Charter School's outstanding debt can be found in the notes to the financial statements.

HUDSON ARTS AND SCIENCE CHARTER SCHOOL
County of Hudson, New Jersey

J-14

Demographic and Economic Statistics
Last Eight Fiscal Years
(Unaudited)

<u>Year</u>	<u>Population ^a</u>	<u>Personal Income ^b</u>	<u>Per Capita Personal Income ^c</u>	<u>Unemployment Rate ^d</u>
2017	270,753	15,158,377,458	55,986	6.60%
2018	270,753	15,158,377,458	55,986	4.70%
2019	270,753	16,143,106,119	59,623	3.00%
2020	270,753	16,143,106,119	59,623	3.00%
2021	270,753	16,143,106,119	59,623	3.00%
2022	270,753	16,143,106,119	59,623	3.00%
2023	270,753	16,143,106,119	59,623	3.00%
2024	270,753	16,143,106,119	59,623	3.00%

Source:

^a Population information provided by the New Jersey Dept of Labor and Workforce Development

^b Personal income has been estimated based upon the municipal population and per capita personal income presented

^c Personal capital income by municipality estimated based upon the 2010 Census published by the US Bureau of Economic Analysis.

^d Unemployment data provided by the New Jersey Dept of Labor and Workforce Development

HUDSON ARTS AND SCIENCE CHARTER SCHOOL
County of Hudson, New Jersey

J-15

Principal Employers
Current Year
(Unaudited)

<u>Employer</u>	2024		
	a		a
	Rank		Percentage of
	Employees	[Optional]	Total Municipal
			Employment

Information not available

HUDSON ARTS AND SCIENCE CHARTER SCHOOL
County of Hudson, New Jersey

J-16

Full-Time Equivalent Charter School Employees by Function/Program
Last Eight Fiscal Years
(Unaudited)

<u>Function/Program</u>	Fiscal Year Ended June 30,							
	<u>2024</u>	<u>2023</u>	<u>2022</u>	<u>2021</u>	<u>2020</u>	<u>2019</u>	<u>2018</u>	<u>2017</u>
Instruction	64	64	64	64	72	61	42	25
Support Services	18	18	18	18	7	16	3	3
Administrative	14	14	14	14	27	15	10	15
Total	<u>96</u>	<u>96</u>	<u>96</u>	<u>96</u>	<u>106</u>	<u>92</u>	<u>55</u>	<u>43</u>

Source: Charter School Personnel Records

HUDSON ARTS AND SCIENCE CHARTER SCHOOL
County of Hudson, New Jersey

J-17

Operating Statistics

**Last Eight Fiscal Years
(Unaudited)**

Fiscal Year Ended June 30,	Enrollment	Operating Expenditures ^a	Cost Per Pupil	Percentage Change	Teaching Staff ^b	Pupil/Teacher Ratio		Average Daily Enrollment (ADE) ^c	Average Daily Attendance (ADA) ^c	% Change in Average Daily Enrollment	Student Attendance Percentage
						Kindergarten	Elementary				
2017	346	\$ 3,703,435	\$ 10,704	0.00%	25	1:11	1:10	346	346	0.00%	100.00%
2018	472	4,948,665	10,484	-2.05%	42	1:11	1:10	462	449	33.53%	97.19%
2019	695	9,435,002	13,576	29.48%	61	1:11	1:10	674	657	45.89%	97.48%
2020	799	10,953,141	13,709	0.98%	72	1:11	1:10	799	764	18.55%	95.62%
2021	760	10,518,100	13,840	0.96%	64	1:11	1:10	763	735	-4.51%	96.33%
2022	786	10,796,977	13,737	-0.74%	64	1:11	1:10	786	786	3.01%	100.00%
2023	832	12,680,073	15,240	10.95%	64	1:11	1:10	832	819	5.85%	98.43%
2024	836	14,748,924	17,642	15.76%	64	1:11	1:10	832	819	0.00%	98.43%

Sources: Charter School records

Note: Enrollment based on annual June Charter School count.

a Operating expenditures equal total expenditures less debt service and capital outlay.

b Teaching staff includes only full-time equivalents of certificated staff.

c Average daily enrollment and average daily attendance are obtained from the School Register Summary (SRS).

HUDSON ARTS AND SCIENCE CHARTER SCHOOL
County of Hudson, New Jersey

J-18

School Building Information
Last Eight Fiscal Years
(Unaudited)

	Fiscal Year Ended June 30,							
	2024	2023	2022	2021	2020	2019	2018	2017
Charter School Building								
Elementary School								
131 Midland Avenue, Kearny								
Square Feet	20,190	20,190	40,000	40,000	40,000	40,000	40,000	40,000
Capacity (students)	400	400	480	480	430	480	480	360
Enrollment	394	394	472	472	430	366	472	357
Middle School								
114 Chestnut Street, Kearny								
Square Feet	20,780	20,780	36,352	36,352	36,352	36,352		
Capacity (students)	448	448	552	552	276	552		
Enrollment	444	444	288	288	273	282		
Elementary School - K-12, Jersey City								
2737 JFK Boulevard, Jersey City								
Square Feet					8,762	8,762		
Capacity (students)					125	150		
Enrollment					96	47		
Number of Schools at June 30, 2022								
Elementary School = 1								
Middle School = 1								

Source: School Records

HUDSON ARTS AND SCIENCE CHARTER SCHOOL
County of Hudson, New Jersey

J-19

Schedule of Required Maintenance Expenditures
By School Facility
Last Eight Fiscal Years
(Unaudited)

2017	\$ -
2018	-
2019	-
2020	-
2021	-
2022	534,499
2023	578,302
2024	1,937,167
	-
Total	<u>\$ 3,049,968</u>

* School facilities as defined under EFCFA.
(N.J.A.C. 6A:26-1.2 and N.J.A.C. 6A:26A-1.3)

Source: Charter School records

HUDSON ARTS AND SCIENCE CHARTER SCHOOL
County of Hudson, New Jersey

J-20

Insurance Schedule

June 30, 2024
(Unaudited)

	<u>Coverage</u>
Commercial property and general liability:	
Property:	
Personal Property	\$ 350,000,000
Business Income	1,000,000
Electronic Data Processing - Equipment Owned	1,000,000
Employee Dishonesty	500,000
Forgery or Alteration	100,000
Commercial General Liability:	
General Aggregate	500,000,000
Personal & Advertising Injury Limit	1,000,000
Damage to Premises Rented by Insured	300,000
Medical Expense Limit Per Person	5,000
Employee Benefits Liability	1,000,000
Abuse Sublimit - Per Person Limit	1,000,000
Abuse Sublimit - Aggregate Limit	1,000,000
 Automobile	 1,000,000
Umbrella Liability:	
Each Occurrence Limit	1,000,000
General Aggregate	1,000,000
Retained Limit	10,000
Workman's Compensation:	
Each Accident	1,000,000
Disease Policy Limit	1,000,000
Disease Each Employee	1,000,000
Directors & Officers:	
Each Occurrence Limit	3,000,000
Retained Limit	5,000

Source: Charter School Records

HUDSON ARTS AND SCIENCE CHARTER SCHOOL
County of Hudson, New Jersey

J-21

Charter School Performance Framework Financial Indicators
New Term Indicators

June 30, 2024
(Unaudited)

	2024	2023	2022
Cash	\$ 13,025,019	\$ 9,331,723	\$ 6,297,286
Current assets	628,035	1,360,036	678,454
Capital assets, net	1,658,081	1,751,012	1,574,837
Total assets	<u>15,311,135</u>	<u>12,442,771</u>	<u>8,550,577</u>
Current liabilities	398,166	297,969	273,412
Long term liabilities	-	-	-
Total liabilities	<u>398,166</u>	<u>297,969</u>	<u>273,412</u>
Net position	<u><u>\$ 14,912,969</u></u>	<u><u>\$ 12,144,802</u></u>	<u><u>\$ 8,277,165</u></u>
Total revenue	\$ 20,341,424	\$ 19,206,163	\$ 15,591,175
Total expenses	<u>(17,989,086)</u>	<u>(15,741,938)</u>	<u>(14,503,216)</u>
Change in net position	<u><u>\$ 2,352,338</u></u>	<u><u>\$ 3,464,225</u></u>	<u><u>\$ 1,087,959</u></u>
Depreciation expense	\$ 304,410	\$ 318,687	\$ 292,928
Interest expense	-	-	-
Principal payments	-	-	-
Interest payments	-	-	-
Final average daily enrollment	836	832	786
March 30th budgeted enrollment	832	832	799

	2024	2023	2022	Three Year Cumulative
NEAR TERM INDICATORS:				
Current ratio	34.29	35.88	25.51	95.69
Unrestricted days cash	264.28	216.37	158.48	639.13
Enrollment variance	100%	100%	98%	100%
Default	N/A	N/A	N/A	N/A

Source: Charter School Records

HUDSON ARTS AND SCIENCE CHARTER SCHOOL
County of Hudson, New Jersey

J-22

Charter School Performance Framework Financial Indicators
Sustainability Indicators

June 30, 2024
(Unaudited)

	2024	2023	2022
Cash	\$ 13,025,019	\$ 9,331,723	\$ 6,297,286
Current assets	628,035	1,360,036	678,454
Capital assets, net	1,658,081	1,751,012	1,574,837
Total assets	<u>15,311,135</u>	<u>12,442,771</u>	<u>8,550,577</u>
Current liabilities	398,166	297,969	273,412
Long term liabilities	-	-	-
Total liabilities	<u>398,166</u>	<u>297,969</u>	<u>273,412</u>
Net position	<u><u>\$ 14,912,969</u></u>	<u><u>\$ 12,144,802</u></u>	<u><u>\$ 8,277,165</u></u>
Total revenue	\$ 20,341,424	\$ 19,206,163	\$ 15,591,175
Total expenses	<u>(17,989,086)</u>	<u>(15,741,938)</u>	<u>(14,503,216)</u>
Change in net position	<u><u>\$ 2,352,338</u></u>	<u><u>\$ 3,464,225</u></u>	<u><u>\$ 1,087,959</u></u>
Depreciation expense	\$ 304,410	\$ 318,687	\$ 292,928
Interest expense	-	-	-
Principal payments	-	-	-
Interest payments	-	-	-
Final average daily enrollment	836	832	786
March 30th budgeted enrollment	832	832	799

	2024	2023	2022	Three Year Cumulative
SUSTAINABILITY INDICATORS:				
Total margin	12%	18.04%	6.98%	13%
Debt to asset	N/A	N/A	N/A	N/A
Cash flow	\$ 3,693,296	\$ 3,034,437	\$ 2,214,150	\$ 8,941,883
Debt service coverage ratio	N/A	N/A	N/A	N/A

Source: Charter School Records

Single Audit Section

Olugbenga Olabintan

Certified Public Accountant/Consultant

137 Camden Street, Suite #3
Newark, NJ 07103

Tel: (201) 230-7518
Fax: (973) 368-8268
E-mail: oolabintan@aol.com

K-1

Independent Auditor's Report on Internal Control over Financial Reporting and on Compliance and Other Matters Based on an Audit of Financial Statements Performed in Accordance with *Government Auditing Standards*

The Honorable Chairperson and
Members of the Board of Trustees
Hudson Arts and Science Charter School
County of Hudson
Jersey City, New Jersey

We have audited, in accordance with auditing standards generally accepted in the United States of America and the standards applicable to financial audits contained in *Government Auditing Standards*, issued by the Comptroller General of the United States *and audit requirements as prescribed by the Office of School Finance, Department of Education, State of New Jersey*, the financial statements of the governmental activities, each major fund, and the aggregate remaining fund information of Hudson Arts and Science Charter School, in the County of Hudson, State of New Jersey ("the Charter School"), as of and for the year ended June 30, 2024, and the related notes to the financial statements, which collectively comprise the Charter School's basic financial statements, and have issued our report thereon, dated January 15, 2025.

Internal Control over Financial Reporting

In planning and performing our audit of the financial statements, we considered the Charter School's internal control over financial reporting (internal control) to determine the audit procedures that are appropriate in the circumstances for the purpose of expressing our opinions on the financial statements, but not for the purpose of expressing an opinion on the effectiveness of the Charter School's internal control. Accordingly, we do not express an opinion on the effectiveness of the Charter School's internal control.

A *deficiency in internal control* exists when the design or operation of a control does not allow management or employees, in the normal course of performing their assigned functions, to prevent, or detect and correct, misstatements on a timely basis. A *material weakness* is a deficiency, or a combination of deficiencies, in internal control, such that there is a reasonable possibility that a material misstatement of the entity's financial statements will not be prevented, or detected and corrected on a timely basis. A *significant deficiency* is a deficiency, or a combination of deficiencies, in internal control that is less severe than a material weakness, yet important enough to merit attention by those charged with governance.

Our consideration of internal control was for the limited purpose described in the first paragraph of this section and was not designed to identify all deficiencies in internal control that might be material weaknesses or significant deficiencies. Given these limitations, during our audit we did not identify any deficiencies in internal control that we consider to be material weaknesses. However, material weaknesses may exist that have not been identified.

Compliance and Other Matters

As part of obtaining reasonable assurance about whether the Charter School's financial statements are free of material misstatement, we performed tests of its compliance with certain provisions of laws, regulations, contracts, and grant agreements, noncompliance with which could have a direct and material effect on the determination of financial statement amounts. However, providing an opinion on compliance with those provisions was not an objective of our audit, and accordingly, we do not express such an opinion. The results of our tests disclosed no instances of noncompliance or other matters that are required to be reported under *Government Auditing Standards and audit requirements as prescribed by the Office of School Finance, Department of Education, State of New Jersey*.

Purpose of this Report

The purpose of this report is solely to describe the scope of our testing of internal control and compliance and the results of that testing, and not to provide an opinion on the effectiveness of the Charter School's internal control or on compliance. This report is an integral part of an audit performed in accordance with *Government Auditing Standards and audit requirements as prescribed by the Office of School Finance, Department of Education, State of New Jersey* in considering the Charter School's internal control and compliance. Accordingly, this communication is not suitable for any other purpose.

Olugbenga Olabintan, CPA

January 15, 2025
Newark, New Jersey

OLUGBENGA OLABINTAN
Certified Public Accountant/Consultant

A handwritten signature in black ink, appearing to read 'Olugbenga Olabintan', with a stylized flourish at the end.

Olugbenga Olabintan, CPA
Licensed Public School Accountant
No. 20CS00230200

Olugbenga Olabintan

Certified Public Accountant/Consultant

137 Camden Street, Suite #3
Newark, NJ 07103

Tel: (201) 230-7518
Fax: (973) 368-8268
E-mail: oolabintan@aol.com

K-2

Independent Auditors' Report on Compliance for Each Major Federal and State Program and Report on Internal Control over Compliance Required by the Uniform Guidance and *State of New Jersey Department of Treasury Circular 15-08-OMB*

The Honorable Chairperson and
Members of the Board of Trustees
Hudson Arts and Science Charter School
County of Hudson,
Jersey City, New Jersey

Report on Compliance for Each Major Federal and State Program

Opinion on Each Major Federal and State Program

We have audited Hudson Arts and Science Charter School, in the County of Hudson, State of New Jersey ("the Charter School") compliance with the types of compliance requirements described in the *OMB Compliance Supplements* and *State of New Jersey Department of Treasury Circular 15-08-OMB Compliance Supplement* that could have a direct and material effect on each of the Charter School's major federal and state programs for the year ended June 30, 2024. The Charter School's major federal and state programs are identified in the summary of auditor's results section of the accompanying schedule of findings and questioned costs.

In our opinion, the Charter School complied, in all material respects, with the compliance requirements referred to above that could have a direct and material effect on each of its major federal and state programs for the fiscal year ended June 30, 2024.

Basis for Opinion on Each Major Federal and State Program

We conducted our audit of compliance in accordance with auditing standards generally accepted in the United States of America; the standards applicable to financial audits contained in *Government Auditing Standards*, issued by the Comptroller General of the United States; audit requirements prescribed by the Office of School Finance, Department of Education, State of New Jersey; audit requirements of Title 2 U.S. Code of Federal Regulations Part 200, *Uniform Administrative Requirements, Cost Principles, and Audit Requirements for Federal Awards* (Uniform Guidance) and audit requirements of New Jersey OMB Circular 15-08, Single Audit Policy for Recipients of Federal Grants, State Grants and State Aid.

Those standards, the Uniform Guidance, State of New Jersey Department of Treasury Circular 15-08-OMB and *audit requirements as prescribed by the Office of School Finance, Department of Education, State of New Jersey* require that we plan and perform the audit to obtain reasonable assurance about whether noncompliance with the types of compliance requirements referred to above that could have a direct and material effect on a major federal or state program occurred. Our responsibilities under those standards and the Uniform Guidance are further described in the Auditor's Responsibilities for the Audit of Compliance section of our report.

We are required to be independent of the Charter School and to meet our other ethical responsibilities, in accordance with relevant ethical requirements relating to our audit. We believe that the audit evidence we have obtained is sufficient and appropriate to provide a basis for our opinion on compliance for each major federal and state program. Our audit does not provide a legal determination of the Charter School's compliance with the compliance requirements referred to above.

Responsibilities of Management for Compliance

Management is responsible for compliance with the requirements referred to above and for the design, implementation, and maintenance of effective internal control over compliance with the requirements of laws, statutes, regulation, rules, and provisions of contracts or grant agreements applicable to the Charter School's federal and state programs.

Auditor's Responsibilities for the Audit of Compliance

Our objectives are to obtain reasonable assurance about whether material noncompliance with the compliance requirements referred to above occurred, whether due to fraud or error, and express an opinion on the Charter School's compliance based on our audit. Reasonable assurance is a high level of assurance but is not absolute assurance and therefore is not a guarantee that an audit conducted in accordance with generally accepted auditing standards, Government Auditing Standards, audit requirements prescribed by the Office of School Finance, Department of Education, State of New Jersey, U.S. Uniform Guidance and New Jersey OMB Circular 15-08 will always detect material noncompliance when it exists. The risk of not detecting material noncompliance resulting from fraud is higher than for that resulting from error, as fraud may involve collusion, forgery, intentional omission, misrepresentation, or the override of internal control. Noncompliance with the compliance requirements referred to above is considered material if there is a substantial likelihood that, individually or in the aggregate, it would influence the judgment made by a reasonable user of the report on compliance about the Charter School's compliance with the requirements of each major federal and state program as a whole.

In performing an audit in accordance with generally accepted auditing standards, Government Auditing Standards, audit requirements prescribed by the Office of School Finance, Department of Education, State of New Jersey, U.S. Uniform Guidance, and New Jersey OMB Circular 15-08, we:

- Exercise professional judgement and maintain professional skepticism throughout the audit.

- Identify and assess the risks of material noncompliance, whether due to fraud or error, and design and perform audit procedures responsive to those risks. Such procedures include examining, on a test basis, evidence regarding the Charter School's compliance with the compliance requirements referred to above and performing such other procedures as we considered necessary in the circumstances.
- Obtain an understanding of the Charter School's internal control over compliance relevant to the audit in order to design audit procedures that are appropriate in the circumstances and to test and report on internal control over compliance in accordance with the U.S. Uniform Guidance and New Jersey OMB Circular 15-08, but not for the purpose of expressing an opinion on the effectiveness of the Charter School's internal control over compliance. Accordingly, no such opinion is expressed.

We are required to communicate with those charged with governance regarding, among other matters, the planned scope and timing of the audit and any significant deficiencies and material weaknesses in internal control over compliance that we identified during the audit.

Report on Internal Control over Compliance

A deficiency in internal control over compliance exists when the design or operation of a control over compliance does not allow management or employees, in the normal course of performing their assigned functions, to prevent, or detect and correct, noncompliance with a type of compliance requirement of a federal or state program on a timely basis. A material weakness in internal control over compliance is a deficiency, or combination of deficiencies, in internal control over compliance, such that there is a reasonable possibility that material noncompliance with a type of compliance requirement of a federal or state program will not be prevented, or detected and corrected, on a timely basis. A significant deficiency in internal control over compliance is a deficiency, or a combination of deficiencies, in internal control over compliance with a type of compliance requirement of a federal or state program that is less severe than a material weakness in internal control over compliance, yet important enough to merit attention by those charged with governance.

Our consideration of internal control over compliance was for the limited purpose described in the Auditor's Responsibilities for the Audit of Compliance section above and was not designed to identify all deficiencies in internal control over compliance that might be material weaknesses or significant deficiencies in internal control over compliance. Given these limitations, during our audit we did not identify any deficiencies in internal control over compliance that we consider to be material weaknesses, as defined above. However, material weaknesses or significant deficiencies in internal control over compliance may exist that were not identified.

Our audit was not designed for the purpose of expressing an opinion on the effectiveness of internal control over compliance. Accordingly, no such opinion is expressed.

The purpose of this report on internal control over compliance is solely to describe the scope of our testing of internal control over compliance and the results of that testing based on the requirements of U.S. Uniform Guidance, State of New Jersey Department of Treasury Circular 15-08-OMB and *audit requirements as prescribed by the Office of School Finance, Department of Education, State of New Jersey*. Accordingly, this report is not suitable for any other purpose.

Olugbenga Olabintan, CPA

January 15, 2025
Newark, New Jersey

OLUGBENGA OLABINTAN
Certified Public Accountant/Consultant

A handwritten signature in black ink, appearing to read 'Olugbenga Olabintan', with a stylized flourish at the end.

Olugbenga Olabintan, CPA
Licensed Public School Accountant
No. 20CS00230200

HUDSON ARTS AND SCIENCE CHARTER SCHOOL

Schedule of Expenditures of Federal Awards

Year ended June 30, 2024

Federal Grant/ Pass-Through Grantor/ Program Title	Assistance Listing (AL) Number	Federal Award Identification Number	Grant Period	Award Amount	(Accounts Receivable) at June 30, 2023	Deferred Revenue at June 30, 2023	Due to Grantor at June 30, 2023	Adjustments	Carryover (Walkover) Amount	Cash Received	Budgetary Expenditures	Repayment of Prior Years' Balances	(Accounts Receivable) at June 30, 2024	Deferred Revenue at June 30, 2024	Due to Grantor at June 30, 2024
General Fund:															
U.S. Department of Health and Human Services, Pass Through Program															
Passed-Through State Department of Education															
Special Education Medicaid Initiative - SEMI	93.778	2005NJ5MAP	7/1/23-6/30/24	\$ -	\$ -	\$ -	\$ -	\$ -	\$ -	\$ -	\$ -	\$ -	\$ -	\$ -	\$ -
Total General Fund/U.S. Department of Health & Human Services, Pass Through Program					-	-	-	-	-	-	-	-	-	-	-
Special Revenue Fund:															
U.S. Department of Education, Pass Through Programs:															
Passed-Through New Jersey State Department of Education															
Title I Part A - FY 2023-2024	84.010A	S010A240030	7/1/23-9/30/24	364,426	-	-	-	-	-	347,389	(364,326)	-	(16,937)	-	-
Title I SLA - FY 2023-2024	84.010A	S010A240030	7/1/23-9/30/24	39,400	-	-	-	-	-	-	(9,065)	-	(9,065)	-	-
Title I Part A - FY 2022-2023	84.010A	S010A230030	7/1/22-9/30/23	293,443	(75,436)	-	-	105	-	75,331	-	-	-	-	-
Subtotal - Assistance Listing # 84.101A					(75,436)	-	-	105	-	422,720	(373,391)	-	(26,002)	-	-
Title II Part A - FY 2023-2024	84.367A	S367A240029	7/1/23-9/30/24	29,996	-	-	-	-	-	15,259	(29,996)	-	(14,737)	-	-
Title II Part A - FY 2022-2023	84.367A	S367A230029	7/1/22-9/30/23	29,660	(15,660)	-	-	-	-	15,660	-	-	-	-	-
Subtotal - Assistance Listing # 84.367A					(15,660)	-	-	-	-	30,919	(29,996)	-	(14,737)	-	-
Title III Part A - FY 2023-2024	84.365A	S365A240030	7/1/23-9/30/24	27,445	-	-	-	-	-	11,736	(25,190)	-	(13,454)	-	-
Title III Part A - FY 2022-2023	84.365A	S365A230030	7/1/22-9/30/23	30,985	(9,457)	-	-	-	-	9,457	-	-	-	-	-
Title III Immigrant Part A - FY 2023-2024	84.365A	S365A240030	7/1/23-9/30/24	11,527	-	-	-	-	-	246	(639)	-	(393)	-	-
Subtotal - Assistance Listing # 84.365A					(9,457)	-	-	-	-	21,439	(25,829)	-	(13,847)	-	-
IDEA Part B - FY 2023-2024	84.027A	H027A240100	7/1/23-9/30/24	194,550	-	-	-	-	-	186,517	(194,550)	-	(8,033)	-	-
IDEA Part B - FY 2022-2023	84.027A	H027A230100	7/1/22-9/30/23	175,735	(22,061)	-	-	-	-	22,061	-	-	-	-	-
IDEA Preschool - FY 2023-2024	84.173A	H173A240114	7/1/23-9/30/24	3,682	-	-	-	-	-	3,682	(3,682)	-	-	-	-
IDEA Preschool - FY 2022-2023	84.173A	H173A230114	7/1/22-9/30/23	3,270	(3,270)	-	-	-	-	3,270	-	-	-	-	-
Subtotal - Special Education Cluster					(25,331)	-	-	-	-	215,530	(198,232)	-	(8,033)	-	-
CRRSA-Learning Acceleration	84.425D	S425D240027	3/13/20-9/30/23	42,275	-	-	-	-	-	18,047	(18,047)	-	-	-	-
CRRSA-Mental Health	84.425D	S425D240027	3/13/20-9/30/23	45,000	-	-	-	-	-	2,355	(2,355)	-	-	-	-
ARP ESEER III	84.425U	S425U240027	3/13/20-9/30/24	1,480,502	(83,814)	-	-	(998)	-	278,704	(193,892)	-	-	-	-
ARP ESEER III - Accelerated Learning Coaching and Educator Support Grant	84.425U	S425U240027	3/13/20-9/30/24	93,259	-	-	-	-	-	-	-	-	-	-	-
ARP ESEER III - Evidence-Based Summer Learning and Enrichment Activities Grant	84.425U	S425U240027	3/13/20-9/30/24	40,000	(786)	-	-	(1)	-	29,717	(28,930)	-	-	-	-
ARP ESEER III - Evidence-Based Comprehensive Beyond the School Day Grant	84.425U	S425U240027	3/13/20-9/30/24	40,000	(3,435)	-	-	-	-	11,145	(7,710)	-	-	-	-
ARP ESEER III - NJTSS Mental Health Support Staffing Grant	84.425U	S425U240027	3/13/20-9/30/24	45,000	-	-	-	632	-	-	-	-	632	-	-
GEER - New Jersey High Impact Tutoring Program	84.425V	S425V240031	10/11/23-8/31/24	97,000	-	-	-	-	-	68,744	(97,000)	-	(28,256)	-	-
Subtotal - Elementary and Secondary School Education Emergency Relief (ESSER) Funds					(88,035)	-	-	(367)	-	408,712	(347,934)	-	(27,624)	-	-
Total Special Revenue Fund/U.S. Department of Education - Pass-Through Programs					(213,919)	-	-	(262)	-	1,099,320	(975,382)	-	(90,243)	-	-
Enterprise Fund:															
U.S. Department of Agriculture, Pass-Through Programs:															
Passed-Through New Jersey State Department of Agriculture															
National School Lunch Program	10.555	241NJ304N1099	7/1/23-6/30/24	355,363	-	-	-	-	-	337,168	(355,363)	-	(18,195)	-	-
National School Lunch Program	10.555	231NJ304N1099	7/1/22-6/30/23	372,746	(24,091)	-	-	-	-	24,091	-	-	-	-	-
Healthy, Hunger-Free Kids Act	10.555	241NJ304N1099	7/1/23-6/30/24	8,394	-	-	-	-	-	7,928	(8,394)	-	(466)	-	-
Healthy, Hunger-Free Kids Act	10.555	231NJ304N1199	7/1/22-6/30/23	8,213	(614)	-	-	-	-	614	-	-	-	-	-
After School Snacks	10.555	241NJ304N1099	7/1/23-6/30/24	61,735	-	-	-	-	-	60,436	(61,735)	-	(1,299)	-	-
After School Snacks	10.555	221NJ304N1099	7/1/22-6/30/23	49,212	(2,149)	-	-	-	-	2,149	-	-	-	-	-
Subtotal Assistance Listing # 10.555					(26,854)	-	-	-	-	432,386	(425,492)	-	(19,960)	-	-
School Breakfast Program	10.553	241NJ304N1099	7/1/23-6/30/24	74,028	-	-	-	-	-	70,300	(74,028)	-	(3,728)	-	-
School Breakfast Program	10.553	231NJ304N1099	7/1/22-6/30/23	60,909	(4,082)	-	-	-	-	4,082	-	-	-	-	-
Subtotal Assistance Listing # 10.553					(4,082)	-	-	-	-	74,382	(74,028)	-	(3,728)	-	-
Total Enterprise Fund/Total U.S. Department of Agriculture, Pass-Through Programs					(30,936)	-	-	-	-	506,768	(499,520)	-	(23,688)	-	-
Total Expenditures of Federal Awards					\$ (244,855)	\$ -	\$ -	\$ (262)	\$ -	\$ 1,606,088	\$ (1,474,902)	\$ -	\$ (113,931)	\$ -	\$ -

The accompanying Notes to Schedules of Expenditures of Awards and Financial Assistance are an integral part of this schedule.

HUDSON ARTS AND SCIENCE CHARTER SCHOOL

Schedule of Expenditures of State Financial Assistance

Year ended June 30, 2024

State Grantor/Program Title	Grant or State Project Number	Grant Period	Award Amount	(Accounts Receivable) at June 30, 2023	Deferred Revenue at June 30, 2023	Due to Grantor at June 30, 2023	Adjustments	Carryover (Walkover) Amount	Cash Received	Budgetary Expenditures	Repayment of Prior Years' Balances	(Accounts Receivable) at June 30, 2024	Deferred Revenue at June 30, 2024	Due to Grantor at June 30, 2024
New Jersey State Department of Education														
General Fund:														
Equalization Aid	24-495-034-5120-078	7/1/23-6/30/24	\$ 14,764,656	\$ -	\$ -	\$ -	\$ -	\$ -	\$15,209,469	\$ (14,764,656)	\$ -	\$ (378,207)	\$ -	\$ 66,606
Equalization Aid	23-495-034-5120-078	7/1/22-6/30/23	13,545,703	(856,101)	-	57,984	-	-	856,101	-	(57,984)	-	-	-
Special Education Aid	24-495-034-5120-089	7/1/23-6/30/24	446,605	-	-	-	-	-	446,605	(446,605)	-	-	-	-
Security Aid	24-495-034-5120-084	7/1/23-6/30/24	399,475	-	-	-	-	-	399,475	(399,475)	-	-	-	-
State Non-Public Aid	24-100-034-5120-064	7/1/23-6/30/24	80,476	-	-	-	-	-	80,476	(80,476)	-	-	-	-
TPAF/FICA Reimbursements	24-495-034-5094-003	7/1/23-6/30/24	325,926	-	-	-	-	-	309,720	(325,926)	-	(16,206)	-	-
TPAF/FICA Reimbursements	23-495-034-5094-003	7/1/22-6/30/23	311,317	(32,600)	-	-	-	-	32,600	-	-	-	-	-
TPAF Post Retirement Medical Contribution	24-495-034-5094-001	7/1/23-6/30/24	311,845	-	-	-	-	-	311,845	(311,845)	-	-	-	-
TPAF Pension Contribution - Normal & NCGI	24-495-034-5094-002	7/1/23-6/30/24	1,145,801	-	-	-	-	-	1,145,801	(1,145,801)	-	-	-	-
TPAF Long Term Disability Insurance Premium	24-495-034-5094-004	7/1/23-6/30/24	1,266	-	-	-	-	-	1,266	(1,266)	-	-	-	-
Total General Fund/Total State Department of Education				(888,701)	-	57,984	-	-	18,793,358	(17,476,050)	(57,984)	(394,413)	-	66,606
Special Revenue Fund:														
Preschool and Charter Security Grant	23-495-034-5120-086	7/1/22-6/30/23	43,537	-	-	-	(1)	-	28,809	(28,808)	-	-	-	-
Charter & Renaissance School Project Emergent and Capital Maintenance Funds	24-495-034-5120-071	7/1/23-6/30/24	247,117	-	-	-	-	-	247,117	(26,979)	-	-	220,138	-
Total Special Revenue Fund				-	-	-	(1)	-	275,926	(55,787)	-	-	220,138	-
Total New Jersey State Department of Education				(888,701)	-	57,984	(1)	-	19,069,284	(17,531,837)	(57,984)	(394,413)	220,138	66,606
New Jersey State Department of Agriculture - Direct Programs														
Enterprise Fund:														
State School Lunch Program	24-100-010-3350-023	7/1/23-6/30/24	11,851	-	-	-	-	-	11,177	(11,851)	-	(674)	-	-
State School Lunch Program - NJ Expanded Income Eligibility (NJEIE)	24-100-010-3350-023	7/1/23-6/30/24	5,201	-	-	-	-	-	4,836	(5,201)	-	(365)	-	-
State School Lunch Program	23-100-010-3350-023	7/1/22-6/30/23	11,891	(899)	-	-	-	-	899	-	-	-	-	-
State School Breakfast Program	24-100-010-3350-023	7/1/23-6/30/24	4,790	-	-	-	-	-	4,558	(4,790)	-	(232)	-	-
State School Breakfast Program-NJ Expanded Income Eligibility (NJEIE)	24-100-010-3350-023	7/1/23-6/30/24	472	-	-	-	-	-	401	(472)	-	(71)	-	-
State School Breakfast Program	23-100-010-3350-023	7/1/22-6/30/23	2,009	(147)	-	-	-	-	147	-	-	-	-	-
Total Enterprise Fund/Total State Department of Agriculture - Direct Programs				(1,046)	-	-	-	-	22,018	(22,314)	-	(1,342)	-	-
Total State Financial Assistance				\$ (889,747)	\$ -	\$ 57,984	\$ (1)	\$ -	\$19,091,302	(17,554,151)	\$ (57,984)	\$ (395,755)	\$ 220,138	\$ 66,606
Less Amounts Not Subject to Single Audit:														
TPAF Post Retirement Medical Contribution										311,845				
TPAF Pension Contribution - Normal & NCGI										1,145,801				
TPAF Long Term Disability Insurance Premium										1,266				
Total Expenditures of State Financial Assistance Subject to Single Audit										<u>\$ (16,095,239)</u>				

The accompanying Notes to Schedules of Expenditures of Awards and Financial Assistance are an integral part of this schedule.

HUDSON ARTS AND SCIENCE CHARTER SCHOOL
(County of Hudson)
Notes to Schedules of Expenditures of Federal Awards and State Financial Assistance
Year Ended June 30, 2024

1. General

The accompanying schedules of expenditures of federal awards and state financial assistance present the activity of all expenditures of federal awards and state financial assistance of the Charter School. All federal and state awards received directly from federal and state agencies, as well as federal awards and state financial assistance passed through other government agencies is included on the schedule of expenditures of federal awards and state financial assistance.

2. Basis of Accounting

The accompanying schedules of expenditures of federal awards and state financial assistance are presented on the budgetary basis of accounting with the exception of programs recorded in the enterprise fund, which are presented using the accrual basis of accounting. These bases of accounting are described in Note 1 to the Charter School's basic financial statements. The information in these schedules is presented in accordance with the requirements of *Title 2 U.S. Code of Federal Regulations (CFR) Part 200, Uniform Administrative Requirements, Cost Principles, and Audit Requirements for Federal Awards* (Uniform Guidance) and the provisions of New Jersey Department of the Treasury Circular Letter 15-08 OMB, *Single Audit Policy for Recipients of Federal Grants, State Grants and State Aid*. Therefore, some amounts presented in the schedules may differ from amounts presented in, or used in the preparation of, the basic financial statements.

3. Relationship to Basic Financial Statements

Amounts reported in the accompanying schedules agree with amounts reported in the Charter School's basic financial statements. The basic financial statements present the general fund and special revenue fund on a GAAP basis. Budgetary comparison statements and schedules (RSI) are presented for the general fund and special revenue fund to demonstrate finance-related legal compliance in which certain revenue is permitted by law or grant agreement to be recognized in the fiscal year, whereas for GAAP reporting, revenue is not recognized until the subsequent year or expenditures have been made. The general fund is presented in the accompanying schedules on the modified accrual basis. The special revenue fund is presented in the accompanying schedules on the grant accounting budgetary basis, which recognizes encumbrances as expenditures and also recognizes the related revenues, whereas the GAAP basis does not. The net adjustment to reconcile from the budgetary basis to GAAP basis is \$-0- for the general fund and \$-0- for the special revenue fund. See Note 1 (the Notes to Required Supplementary Information) for a reconciliation of the budgetary basis to the modified accrual basis of accounting for the general and special revenue funds (C-3).

HUDSON ARTS AND SCIENCE CHARTER SCHOOL
(County of Hudson)
Notes to Schedules of Expenditures of Federal Awards and State Financial Assistance
Year Ended June 30, 2024

3. Relationship to Basic Financial Statements - *continued*

Federal awards and state financial assistance revenues are reported in the Charter School's basic financial statements on a GAAP basis as follows:

	Federal	State	Total
General Fund	\$ -	\$ 17,476,050	\$ 17,476,050
Special Revenue Fund	975,382	55,787	1,031,169
Enterprise Fund	499,520	22,314	521,834
Total	<u>\$ 1,474,902</u>	<u>\$ 17,554,151</u>	<u>\$ 19,029,053</u>

4. Relationship to Federal and State Financial Reports

Amounts reported in the accompanying schedules agree with the amounts reported in the related federal and state financial reports.

5. Other Information

TPAF Social Security contribution in the amount of \$325,926 represents the amount reimbursed by the State for the employer's share of social security contributions for TPAF members for the fiscal year ended June 30, 2024. The amount reported as TPAF pension representing on-behalf employer's portion of the TPAF Pension System Contributions, TPAF Post-Retirement Medical Benefits Contributions and TPAF Long Term Disability Insurance Premium Contributions in the amount of \$1,458,912 represents the amount paid by the State on behalf of the Charter School for the fiscal year ended June 30, 2024.

6. On Behalf Programs Not Subject to State Single Audit

On-behalf State Programs for TPAF Pension and Post-Retirement Medical Benefits Contributions are not subject to a State single audit and, therefore, are excluded from major program determination. The Schedule of State Financial Assistance provides a reconciliation of State financial assistance reported in the Charter School's financial statements and the amount subject to State single audit and major program determination.

7. De Minimis Indirect Cost

The Charter School has not elected to use the ten percent de minimis indirect cost rate allowed under the Uniform Guidance.

HUDSON ARTS AND SCIENCE CHARTER SCHOOL
(County of Hudson)
Schedule of Findings and Questioned Costs
Year Ended June 30, 2024

Part I - Summary of Auditors' Results

Financial Statements Section

Type of auditor's report issued: Unmodified

Internal control over financial reporting:

Material weaknesses identified? Yes ✓ No

Significant deficiencies identified Yes ✓ None reported

Noncompliance material to financial statements noted? Yes ✓ No

Federal Awards:

Type of auditor's report on compliance for major programs: Unmodified

Internal control over major programs:

Material weaknesses identified? Yes ✓ No

Significant deficiencies identified? Yes ✓ None reported

Any audit findings disclosed that are required to be reported in accordance with 2 CFR 200.516(a)? Yes ✓ No

Identification of major programs:

Assistance Listing

<u>Number(s)</u>	<u>FAIN Number(s)</u>	<u>Name of Federal Program or Cluster</u>
84.010A	S010A240030	Title I, Part A & Title I SIA
84.425D	S425D200027	Coronavirus Response and Relief Supplemental Act (CRRSA) ESSER II
84.425U	S425U210027	American Rescue Plan (ARP) ESSER III
84.425V	S425V240031	GEER – New Jersey High Impact Tutoring

Dollar threshold used to distinguish between Type A and B programs: \$750,000

Auditee qualifies as low-risk auditee? ✓ Yes No

HUDSON ARTS AND SCIENCE CHARTER SCHOOL
(County of Hudson)
Schedule of Findings and Questioned Costs
Year Ended June 30, 2024

Part I Summary of Auditors' Results

State Financial Assistance Section

Dollar threshold used to distinguish between Type A and B programs: \$750,000

Auditee qualifies as low-risk auditee? ☒ yes ☐ No

Type of auditor's report on compliance for major programs: Unmodified

Internal control over major programs:

Material weakness(es) identified? ☐ Yes ☒ No

Significant deficiency(cies) identified that are not
 Considered to be material weaknesses? ☐ Yes ☒ None reported

Any audit findings disclosed that are required to be reported
 in accordance with NJ OMB Circulars 15-08 as applicable? ☐ Yes ☒ No

Identification of Major Programs:

<u>State Grant/Program Number(s)</u>	<u>Name of State Program or Cluster</u>
24-495-034-5120-078	Equalization Aid
24-495-034-5120-089	Special Education Aid
24-495-034-5120-084	Security Aid
24-495-034-5120-064	State Non-Public Aid

**HUDSON ARTS AND SCIENCE CHARTER SCHOOL
(County of Hudson)
Schedule of Findings and Questioned Costs
Year Ended June 30, 2024**

Part II – Schedule of Financial Statement Findings

NONE

**HUDSON ARTS AND SCIENCE CHARTER SCHOOL
(County of Hudson)
Schedule of Findings and Questioned Costs
Year Ended June 30, 2024**

Part III –Federal Awards Findings and Questioned Cost

NONE

Part III – State Financial Assistance Findings and Questioned Cost

NONE

**HUDSON ARTS AND SCIENCE CHARTER SCHOOL
(County of Hudson)
Summary Schedule of Prior Year Audit Findings
Year Ended June 30, 2024**

Financial Statements Findings:

None in the prior year.

Major Federal Award Findings:

None in the prior year.