



Jersey City Community Charter School

ANNUAL COMPREHENSIVE FINANCIAL REPORT

**FOR THE FISCAL YEAR ENDED
JUNE 30, 2024**

PREPARED BY

JERSEY CITY COMMUNITY CHARTER SCHOOL

JERSEY CITY COMMUNITY CHARTER SCHOOL

Table of Contents

Introductory Section

Letter of Transmittal	1-9
Organizational Chart	10
Roster of Officials	11
Consultants and Advisors	12

Financial Section

Report of Independent Auditors.....	14-17
-------------------------------------	-------

Required Supplementary Information – Part I

Management’s Discussion and Analysis	18-25
--	-------

Basic Financial Statements

A Charter School-wide Financial Statements:

A-1 Statement of Net Position	28
A-2 Statement of Activities	29

B Fund Financial Statements:

Governmental Funds:

B-1 Balance Sheet	32
B-2 Statement of Revenues, Expenditures, and Changes in Fund Balances	33
B-3 Reconciliation of the Statement of Revenues, Expenditures and Changes in Fund Balances of Governmental Funds to the Statement of Activities	34

Proprietary Funds:

B-4 Statement of Net Position	36
B-5 Statement of Revenues, Expenses, and Changes in Fund Net Position.....	37
B-6 Statement of Cash Flows	38

JERSEY CITY COMMUNITY CHARTER SCHOOL

Table of Contents

Fiduciary Funds:

B-7 Statement of Fiduciary Net Position	Not Applicable
B-8 Statement of Changes in Fiduciary Net Position	Not Applicable

Notes to the Basic Financial Statements	40-82
---	-------

Required Supplementary Information – Part II

C. Budgetary Comparison Schedules:

C-1 Budgetary Comparison Schedule – General Fund	84
C-2 Budgetary Comparison Schedule – Special Revenue Fund	85

Notes to the Required Supplementary Information

C-3 Budget-to-GAAP Reconciliation	87
---	----

Required Supplementary Information – Part III

L. Schedules Related to Accounting and Reporting for Pensions (GASB 68):

L-1 Schedule of the Charter School Proportionate Share of the Net Pension Liability – Public Employee’s Retirement System (PERS)	88
L-2 Schedule of Charter School Contributions – Public Employee’s Retirement System (PERS)	89
L-3 Schedule of the Charter School Proportionate Share of the Net Pension Liability – Teacher’s Pension and Annuity Fund (TPAF)	90

M. Schedule Related to Accounting and Reporting for OPEB (GASB 75)

M-1 Schedule of the State’s Proportionate Share of the Net OPEB Liability Associated with the Charter School and Changes in the Total OPEB Liability Related Ratios - (PERS and TPAF)	91
---	----

Notes to Required Supplementary Information – Pension Schedules	92
---	----

Other Supplementary Information

D. Schedule of Charter School Contributions - PERS	Not Applicable
--	----------------

JERSEY CITY COMMUNITY CHARTER SCHOOL

Table of Contents

E. Special Revenue Fund:

E-1 Combining Schedule of Program Revenues and Expenditures Budgetary Basis	96
E-2 Schedule of Preschool Education Aid Budgetary Basis	Not Applicable

F. Capital Projects Fund

F-1 Summary Schedule of Project Expenditures	Not Applicable
F-2 Summary Schedule of Revenues, Expenditures & Changes in Fund Balance.....	N/A
F-2a Summary Schedule of Revenues, Expenditures & Project Balance – Project Fund	N/A
F-2b Summary Schedule of Revenues, Expenditures & Project Balance – Repair & Replac..	N/A

G. Proprietary Funds:

Enterprise Fund:

G-1 Combining Statement of Net Position	99
G-2 Combining Statement of Revenues, Expenses and Changes in Fund Net Position.....	100
G-3 Combining Statement of Cash Flows	101

H. Fiduciary Fund:

H-1 Combining Statement of Fiduciary Net Position.....	Not Applicable
H-2 Combining Statement of Revenues, Expenses and Combining Statement of Changes in Fiduciary Net Position	Not Applicable

I. Long - Term Debt:

I-1 Schedule of Bonds Payable	104
I-2 Schedule of Loans Payable	Not Applicable
I-3 Debt Service Fund Budgetary Comparison Schedule	106

J. Introduction to the Statistical Section (Unaudited)

Financial Trends

J-1 Net Position by Component	109
J-2 Changes in Net Position	110
J-3 Fund Balances – Governmental Funds	111
J-4 Changes in Fund Balances – Governmental Funds	112
J-5 General Fund Other Local Revenue by Source	113

JERSEY CITY COMMUNITY CHARTER SCHOOL

Table of Contents

J. Introduction to the Statistical Section (Unaudited)

Revenue Capacity

J-6 to J-9.....Not Applicable

Debt Capacity

J-10 Ratios of Outstanding Debts by Type114

J-11 to J-13.....Not Applicable

Demographic and Economic Information

J-14 Demographics and Economic Statistics.....115

J-15 Principal Employers116

Operating Information

J-16 Full-time Equivalent Charter School Employees by Function/Program117

J-17 Operating Statistics118

J-18 School Building Information119

J-19 Schedule of Required Maintenance Expenditures by School Facility120

J-20 Insurance Schedule121

Charter School Performance Framework Financial Indicators

J-21 Near Term Indicators122

J-22 Sustainability Indicators.....123

K. Single Audit Section

K-1 Independent Auditor's Report on Internal Control over Financial Reporting and on Compliance and Other Matters Based on an Audit of Financial Statements Performed in Accordance with *Government Auditing Standards*..... 125-126

K-2 Independent Auditor's Report on Compliance for Each Major State Program; Required by the State of New Jersey OMB's Circular Letter 15-08..... 127-130

K-3 Schedule of Expenditures of Federal Awards, Schedule A..... 130a

K-4 Schedule of Expenditures of State Financial Assistance, Schedule B.....131

K-5 Notes to the Schedules of Expenditures of Federal Awards and State Financial Assistance..... 132-133

K-6 Schedule of Findings and Questioned Costs 134-137

K-7 Summary Schedule of Prior Audit Findings.....138



JERSEY CITY COMMUNITY CHARTERSCHOOL

128 Danforth Avenue, Jersey City, NJ 07305 Phone: (201) 433-2288 - Fax: (201) 433-5803
School Website: www.jcccsonline.org

March 19, 2025

The Commissioner
New Jersey Department of Education
Riverview Executive Plaza – Bldg. 100
P. O. Box 500
Trenton, New Jersey 08625-0500

Dear Commissioner:

We hereby submit the Annual Comprehensive Financial Report of Jersey City Community Charter School (the “Charter School” or “JCCCS”) for the fiscal year ended June 30, 2024.

Responsibility for both the accuracy of the data and completeness and fairness of the presentation, including all disclosures, rests with the management of the Charter School. To the best of our knowledge and belief, the data presented in this report is accurate in all material respects and are reported in a manner designed to fairly present the financial position and result of operations of the various funds of the Charter School. All disclosures necessary to enable the reader to gain an understanding of the Charter School’s financial activities have been included.

Governmental Accounting Standards Board (GASB) requires that management provide a narrative introduction overview and analysis to accompany the basic financial statements in the form of Management’s Discussion and Analysis (MD&A). This letter of transmittal is designed to complement the MD&A and should be read in conjunction with it. Jersey City Community Charter School’s MD&A can be found immediately following the Independent Auditor’s Report.

The Annual Comprehensive Financial Report is presented in four sections: introductory, financial, statistical and single audit. The introductory section includes this transmittal letter, the Charter School’s organizational chart and a list of principal officials. The financial section includes the independent auditor’s report, management’s discussion and analysis (MD&S) and the basic financial statements including the Charter School-wide financial statements presented in conformity with Governmental Accounting Standards Board Statement No. 34. The basic financial statements also include individual fund financial statements and required supplemental information (RSI). The statistical section includes selected financial and demographic information, generally presented on a multi-year basis.

New Jersey Department of Education
The Commissioner
Page 2

The Charter School is required to undergo an annual single audit in conformity with the provisions of the *Title 2 U.S. Code of Federal Regulations (CFR) Part 200, Uniform Administrative Requirements, Cost Principles, and Audit Requirements for Federal Awards* (Uniform Guidance), and the New Jersey OMB's Circular 15-08, "*Single Audit Policy for Recipients of Federal Grants, State Grants, and State Aid*". Information related to this single audit, including the auditor's report on internal control and compliance with applicable *laws and regulations* and findings and recommendations are included in the single audit section of this report.

Information related to this single audit, including the auditor's report on internal control and compliance with applicable *laws and regulations* and findings and recommendations are included in the single audit section of this report.

1) Reporting Entity and Its Services

Jersey City Community Charter School is an independent reporting entity within the criteria adopted by the Government Accounting Standards Board (GASB) as established by National Council on Governmental Accounting (NCGA) Statement No. 3. All funds and account groups of the Charter School are included in this report.

The overarching mission of the Charter School is to inspire and empower its students, families and staff with opportunities to successfully shape and transform their lives by becoming successful, lifelong learners who possess the critical-thinking, academic, advocacy, and leadership skills required to continuously open new doors in their lives and the lives of others.

The Charter School is open to all Jersey City students on a space available basis and does not discriminate in its admission policies or practices on the basis of intellectual or athletic ability, measures of achievement or aptitude, status as a handicapped person, proficiency in the English language, or any other basis that would be illegal if used by a charter school.

By the end of 2023-2024 school year, the Charter School had a student enrollment of 575 students, which is 8 students higher than the previous year's enrollment. The following details the changes in student enrollment of the school over the last ten years:

1) **Reporting Entity and Its Services** - *continued*

<u>Fiscal Year</u>	<u>Average Student Daily Enrollment</u>	<u>Percentage Change</u>
2023-2024	574	-0.17%
2022-2023	575	2.68%
2021-2022	560	-4.76%
2020-2021	588	1.38%
2019-2020	580	2.11%
2018-2019	568	-1.05%
2017-2018	574	2.50%
2016-2017	560	-1.93%
2015-2016	571	-2.56%
2014-2015	586	0.34%

2) **Economic Condition and Outlook**

The Charter School is located in Jersey City, the second largest municipality in New Jersey with a population of 270,553 according to the United States Department of Commerce's 2017 Census. The City is located on the west side of the Hudson River, directly across from lower Manhattan in New York City, and is part of the major business and industrial concentration spanning the New York-Northern New Jersey Metropolitan area.

The City's land area is 14.9 square miles, including a five-mile long stretch of Hudson River waterfront that has experienced considerable high-rise office tower, residential and multifamily development over the past ten years. The City is connected to New York City by Holland Tunnel and the PATH railroad tubes, and is within ten miles of Newark Liberty International Airport and the container and cargo facilities of Port Newark-Elizabeth.

The City is located in the County of Hudson. The City's size and current development activities cause it to dominate the economy of Hudson County. The City also serves as the seat of the County Government. Of the approximately 314,272 persons employed in the County, approximately 285,533 or 91 % are employed in Jersey City.

The Charter School has completed its 19th year of implementation. During the 2023-2024 School-Year, the school serviced the following number of students per grade:

2) **Economic Condition and Outlook** - *continued*

<u>Grades</u>	<u>Students</u>
Kindergarten	64
Grade 1	67
Grade 2	67
Grade 3	60
Grade 4	60
Grade 5	66
Grade 6	67
Grade 7	63
Grade 8	60
	<u>574</u>

Growth

At its inception, the Charter School began with 72 kindergarten students. It ended the 2023-2024 school year with an enrollment of 574 students in grades K to 8.

The Charter School is one of the first cohort of charter schools in the State of New Jersey. In December 2000, the school submitted its first renewal application for continuation of its charter. The school submitted its most recent renewal application during the 2015- 2016 school-year and received a charter for an additional five years to 2024-2025. As part of the renewal process, the Charter School was required to develop a five-year fiscal plan.

During the school year, 2003-2004 the Charter School purchased one of its existing facilities (at 128 Danforth Avenue, in Jersey City, New Jersey) from the former owners, the Urban League of Hudson County, Inc. The building had a capacity for up to 350 students. During the 2008-2009 school-year the school completed the expansion of its existing facilities adding 14 classrooms at the 128 Danforth location. In addition, during the school year 2010-2011, the Charter School acquired and renovated a building at 16 Bentley Avenue, Jersey City, New Jersey providing more permanent facilities (classrooms and administrative offices) for the Middle School.

3) Major Initiatives

The Charter School ensures that its curriculum is aligned to state standards. Expeditionary Learning is implemented in English Language Arts Literacy (ELA) in grades K-8. Professional Development participation is conducted throughout the school year and attendance is required for instructional staff. Additionally, in grades K-3, we will continue the implementation of the Children's Literacy Initiative placing continued emphasis on Core Practices - Literacy Environment - Physical Elements, Intentional Read Aloud, Message Time Plus and The Workshop Model. In preparation for NJSLA administration, students receive additional support with technology and the ELA curriculum.

A new mathematics series entitled, enVisionmath 2.0 and Digits 2015 on Realize were implemented in grades K-8. Professional Development activities will be conducted this summer and continued throughout the school year. Staff attendance and participation is required. In preparation for the P ARCC administration, students will receive additional support with technology and the math curriculum.

The Interactive Science for grades K-8 is based on best practices from academic research and alignment to next generation science standards. Which results is a program rooted in sound learning approaches, teaching strategies, and ideas to engage all learners, to maximize their learning, so that they can apply their thinking. Lesson plans are reviewed on a bi-weekly basis. Formal and informal observations are conducted throughout the school year providing feedback to improve teacher practice.

All students receive social studies instruction from Kindergarten through grade 8. The challenges of the 21st Century are complex, have global implications, and are connected to people, places, and events of the past. The study of social studies focuses on deep understanding of concepts that enable students to think critically and systematically about local, regional, national, and global issues. The resources currently used include Social Studies Civics Today, The American Journey, and Discovering Our Past. Authentic learning experiences that enable students to apply content knowledge, develop citizenship skills, and collaborate with students from around the world prepare New Jersey students for the 21st-century workplace. Lesson plans will be reviewed on a bi-weekly basis. Formal and informal observations are conducted the school year, making recommendations and providing to improve teacher practice.

Management of the Charter School is responsible for establishing and maintaining internal control designed to ensure the assets of the Charter School are protected from loss, theft or misuse, and to ensure that adequate accounting data are compiled to allow for the preparation of financial statements in conformity with generally accepted accounting principles (GAAP). Internal control is designed to provide reasonable, but not absolute, assurance that these objectives are met. The concept of reasonable assurance recognizes that: (1) the cost of a control should not exceed the benefits likely to be derived; and (2) the valuation of costs and benefits requires estimates and judgments by management.

4) Internal Accounting Controls

Management of the Charter School is responsible for establishing and maintaining internal control designed to ensure the assets of the Charter School are protected from loss, theft or misuse and to ensure that adequate accounting data are compiled to allow for the preparation of financial statements in conformity with generally accepted accounting principles (GAAP). The system of internal control is designed to provide reasonable, but not absolute, assurance that these objectives are met. The concept of reasonable assurance recognizes that: (1) the cost of a control should not exceed the benefits likely to be derived; and (2) the valuation of costs and benefits requires estimates and judgments by management.

As a recipient of federal awards and state financial assistance, the Charter School also is responsible for ensuring that adequate system of internal controls is in place to ensure compliance with applicable laws and regulations related to those programs. This system of internal control is also subject to periodic evaluation by the Charter School's management. As part of the Charter School's single audit described earlier, tests are made to determine the adequacy of the system of internal controls, including that portion related to federal awards and state financial assistance programs, as well as to determine that the Charter School has complied with applicable laws and regulations.

5) Budgetary Controls

In addition to internal accounting controls, the Charter School maintains budgetary controls. The objective of these budgetary controls is to ensure compliance with the statutory requirements of charter school budgets. Annual appropriated budgets are adopted for general and special revenue funds. The final budget amount, as amended for the fiscal year is reflected in the financial section. An encumbrance accounting system is used to record outstanding purchase commitments on a line item basis. Open encumbrances at year end are either canceled or are included as re-appropriations of fund balance in the subsequent year.

During the 2023-2024 fiscal school, the Charter School continued its efforts to improve its audit status and operational processes and procedures, correcting deficiencies identified in previous audits and reviews and on maintaining general compliance with sound fiscal practices.

6) Accounting System and Report

The Charter School's accounting records reflect generally accepted accounting principles (GAAP), as promulgated by the Governmental Accounting Standards Board (GASB). The accounting records also reflect New Jersey State Statute (N.J.S.A 18:4-14) that requires a uniform system of double-entry bookkeeping consistent with the GAAP established by GASB for us in all school districts and charter school. The accounting system is organized on the basis of funds in accordance with the Uniform Charter of Accounts (Handbook 2R2) for New Jersey Public Schools. These funds are explained in "Notes to the Financial Statements", Note 1.

7) **Financial Statement Information at Fiscal Year-End**

As demonstrated by the various statements and schedules included in the financial section of this report, the Charter School continues to meet its responsibility for sound financial management. The following schedule presents a summary of the General Fund, Special Revenue Fund, Capital Projects Fund and Debt Service Fund for the fiscal year ended June 30, 2024 fiscal year:

**Summary of the General Fund, Special Revenue Fund,
Capital Projects Fund and Debt Service Fund**

Revenue	2024	2023	Increase/ (decrease)	% Change
Local sources	\$ 12,330,857	\$ 8,766,189	\$ 3,564,668	40.66%
State sources	4,062,553	4,780,102	(717,549)	-15.01%
Federal sources	3,196,721	2,540,166	656,555	25.85%
	<u>\$ 19,590,131</u>	<u>\$ 16,086,457</u>	<u>\$ 3,503,674</u>	<u>21.78%</u>

The Charter School experienced a significant increase in revenue of about 21.78% which was due to the significant COVID-19 related funding and increase in City of Jersey City local payroll tax transfer revenue.

The following schedule presents a summary of General Fund, Special Revenue Fund, Capital Projects Fund and Debt Service Fund expenditures for the fiscal year ended June 30, 2024:

**Summary of the General Fund, Special Revenue Fund,
Capital Projects Fund and Debt Service Fund**

Expenditures	2024	2023	Increase/ (decrease)	% Change
Instruction	\$ 3,991,796	\$ 3,406,374	\$ 585,422	17.19%
Administrative	3,417,492	3,567,051	(149,559)	-4.19%
Support	3,575,721	2,706,246	869,475	32.13%
Capital outlay	194,736	-	194,736	0.00%
Debt service	671,663	838,350	(166,687)	-19.88%
	<u>\$ 11,851,408</u>	<u>\$ 10,518,021</u>	<u>\$ 1,333,387</u>	<u>12.68%</u>

The Charter School's expenditures increased by about 12.68% over last year's – which was largely due to COVID-19 related expenditures.

8) Cash Management

The investment policy of the Charter School is guided in large part by state statute as detailed in “Notes to the Financial Statements”. The Charter School has adopted a cash management plan, which requires it to deposit public funds in public depositories protected from loss under the provision of the Governmental Unit Deposit Protection Act (“GUDPA”). GUDPA was enacted in 1970 to protect Governmental Units from loss of funds on deposit with a failed banking institution in New Jersey. The law requires governmental units to deposit public funds in public depositories located in New Jersey, where the funds are secured in accordance with the Act.

9) Risk Management

The Board carries various forms of insurance, including but not limited to general liability and comprehensive/collision, hazard and theft insurance on property and contents, fidelity bonds and worker’s compensation.

10) Other Information

Independent Audit

State statute requires an annual audit by independent Certified Public Accountants or registered Municipal Accountants. The Charter School appointed the accounting firm of Olugbenga Olabintan, CPA. In addition to meeting the requirements set forth in state statutes, the audit also was designed to meet the requirements of *Title 2 U.S. Code of Federal Regulations (CFR) Part 200, Uniform Administrative Requirements, Cost Principles, and Audit Requirements for Federal Awards* (Uniform Guidance) and New Jersey OMB Circular Letter 15-08 “*Single Audit Policy for Recipients of Federal Grants, State Grants, and State Aid*”.

The auditor’s report on the basic financial statements is included in the financial section of this report. The auditor’s reports related specifically to the single audit are included in the single audit section of this report.

11) **Acknowledgments**

A note of appreciation is extended to the Finance Committee of the Charter School for their ongoing support and commitment to fiscal integrity and to Jersey City Community Charter School Board of Trustees for their selfless dedication to improving student achievement.

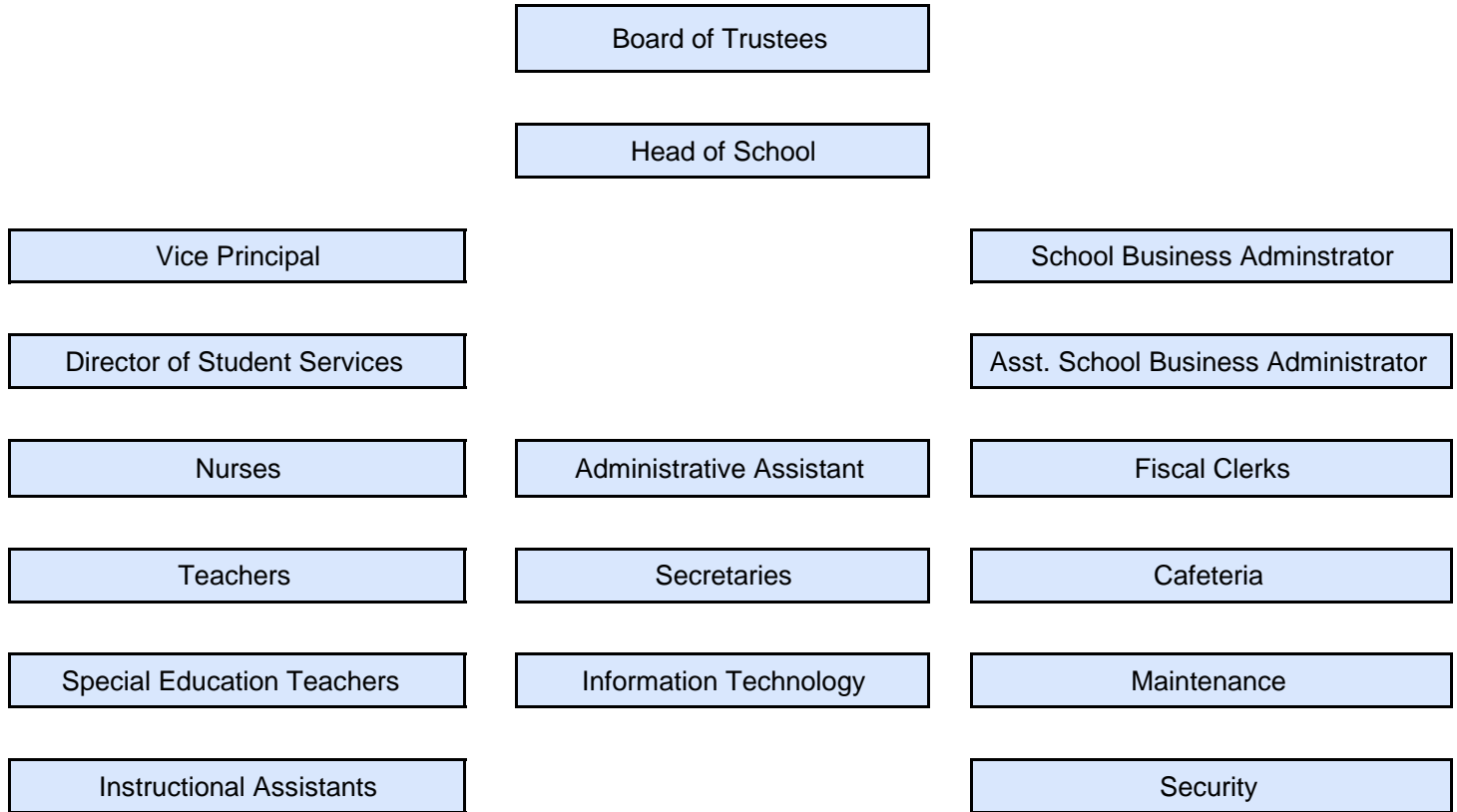
A special note of appreciation is extended to the Business Office and to all of the business operations staff members for their untiring efforts to improve processes, procedures and audit outcomes. Their contributions in support of the students and staff of Jersey City Community Charter School are truly noteworthy. The preparation of this report could not have been accomplished without the efficient and dedicated services of our financial, accounting and administrative staff.

Respectfully submitted,

Lenora Galleros, CPA
School Business Administrator

Patricia Spiegel-Stroman
Board President

Jersey City Community Charter School
Fiscal Year 2023-2024 Organizational Chart



Page 10 for Organizational Chart

JERSEY CITY COMMUNITY CHARTER SCHOOL

Roster of Trustees and Officers

June 30, 2024

Members of Board of Trustees

Name

Patricia Spegel-Stroman	President
Angela V. McKnight	Vice President
Aflowa Zaza	Trustee
Dr. Zandile P. Nkabinde	Trustee
Diedre Ritter	Trustee

Executive Board

Patricia Spegel-Stroman	President
Howard Mankoff, Esq. ***	Board Attorney
Ayana Williams ***	Head of School
Gloria Enobia	Assistant Principal
Leonora Galleros, CPA ***	School Business Administrator

*** Ex-Officio

JERSEY CITY COMMUNITY CHARTER SCHOOL

Consultants and Advisor

Independent Auditors

Olugbenga Olabintan
Certified Public Accountant/Consultant
137 Camden Street
Newark, NJ 07103

Attorneys At Law

Marshall, Dennehey, Warner, Coleman & Goggin
Attorneys at Law
425 Eagle Rock Avenue, Suite 302
Roseland, New Jersey 07068

Official Depository

Bayonne Community Bank
104-110 Avenue C
Bayonne, New Jersey 07002

Financial Section

Olugbenga Olabintan

Certified Public Accountant/Consultant

137 Camden Street, Suite #3
Newark, NJ 07103

Tel: (201) 230-7518
Fax: (973) 368-8268
E-mail: oolabintan@aol.com

Independent Auditors' Report

The Honorable President and
Members of the Board of Trustees
Jersey City Community Charter School
Jersey City, New Jersey
County of Hudson

Report on the Financial Statements

We have audited the accompanying financial statements of the governmental activities, the business-type activities, each major fund and the aggregate remaining fund information of Jersey City Community Charter School, in the County of Hudson, State of New Jersey (the "Charter School") as of and for the fiscal year ended June 30, 2024, and the related notes to the financial statements, which collectively comprise the Charter School's basic financial statements as listed in the table of contents.

In our opinion, the accompanying financial statements referred to above present fairly, in all material respects, the respective financial position of the governmental activities of the Charter School as of June 30, 2024, and the respective changes in net position and cash flows for the year then ended in accordance with accounting principles generally accepted in the United States of America.

Basis for Opinion

We conducted our audit in accordance with auditing standards generally accepted in the United States of America, the standards applicable to financial audits contained in *Government Auditing Standards*, issued by the Comptroller General of the United States and the audit requirements prescribed by the *Office of School Finance, Department of Education, State of New Jersey*. Our responsibilities under those standards are further described in the Auditor's Responsibilities for the Audit of the Financial Statements section of our report. We are required to be independent of the Charter School and to meet our other ethical responsibilities, in accordance with the relevant ethical requirements relating to our audit. We believe that the audit evidence we have obtained is sufficient and appropriate to provide a basis for our audit opinions.

Responsibilities of Management for the Financial Statements

Management is responsible for the preparation and fair presentation of the financial statements in accordance with accounting principles generally accepted in the United States of America; and for the design, implementation, and maintenance of internal control relevant to the preparation and fair presentation of financial statements that are free from material misstatements, whether due to fraud or error.

In preparing the financial statements, management is required to evaluate whether there are conditions or events, considered in the aggregate, that raise substantial doubt about the Charter School's ability to continue as a going concern for twelve months beyond the financial statement date, including any currently known information that may raise substantial doubt shortly thereafter.

Auditor's Responsibilities for the Audit of the Financial Statements

Our objectives are to obtain reasonable assurance about whether the financial statements as a whole are free from material misstatement, whether due to fraud or error, and to issue an auditor's report that includes our opinion. Reasonable assurance is a high level of assurance but is not absolute assurance and therefore is not a guarantee that an audit conducted in accordance with generally accepted auditing standards (GAAS), *Government Auditing Standards* and audit requirements prescribed by the Office of School Finance, Department of Education, State of New Jersey, will always detect a material misstatement when it exists. The risk of not detecting a material misstatement resulting from fraud is higher than for one resulting from error, as fraud may involve collusion, forgery, intentional omissions, misrepresentations, or the override of internal control. Misstatements are considered material if there is a substantial likelihood that, individually or in the aggregate, they would influence the judgment made by a reasonable user based on the financial statements.

In performing an audit in accordance with generally accepted auditing standards, Government Auditing Standards and audit requirements prescribed by the Office of School Finance, Department of Education, State of New Jersey, we:

- Exercise professional judgement and maintain professional skepticism throughout the audit.
- Identify and assess the risks of material misstatement of the financial statements, whether due to fraud or error, and design and perform audit procedures responsive to those risks. Such procedures include examining, on a test basis, evidence regarding the amounts and disclosures in the financial statements.
- Obtain an understanding of internal control relevant to the audit in order to design audit procedures that are appropriate in the circumstances, but not for the purpose of expressing an opinion on the effectiveness of the Charter School, Inc.'s internal control. Accordingly, no such opinion is expressed.
- Evaluate the appropriateness of accounting policies used and the reasonableness of significant accounting estimates made by management, as well as evaluate the overall presentation of the financial statements.
- Conclude whether, in our judgment, there are conditions or events, considered in the aggregate, that raise substantial doubt about the Charter School, Inc.'s ability to continue as a going concern for a reasonable period of time.

We are required to communicate with those charged with governance regarding, among other matters, the planned scope and timing of the audit, significant audit findings, and certain internal control-related matters that we identified during the audit.

Other Matters

Required Supplementary Information

Accounting principles generally accepted in the United States of America require that the management's discussion and analysis, budgetary comparison information, pension information and other postemployment benefits information be presented to supplement the basic financial statements. Such information is the responsibility of management and although not a part of the basic financial statements, is required by the Governmental Accounting Standards Board who considers it to be an essential part of financial reporting for placing the basic financial statements in an appropriate operational, economic, or historical context. We have applied certain limited procedures to the required supplementary information in accordance with auditing standards generally accepted in the United States of America, which consisted of inquiries of management about the methods of preparing the information and comparing the information for consistency with management's responses to our inquiries, the basic financial statements, and other knowledge we obtained during our audit of the basic financial statements. We do not express an opinion or provide any assurance on the information because the limited procedures do not provide us with sufficient evidence to express an opinion or provide any assurance.

Supplementary and Other Information

Our audit was conducted for the purpose of forming opinions on the financial statements that collectively comprise the Charter School's basic financial statements. The accompanying combining and individual nonmajor fund financial statements, schedule of expenditures of federal awards as required by Title 2 U.S. Code of Federal Regulations (CFR) Part 200, Uniform Administrative Requirements, Cost Principles, and Audit Requirements for Federal Awards (Uniform Guidance) and schedule of expenditures of state financial assistance as required by New Jersey OMB Circular 15-08, Single Audit Policy for Recipients of Federal Grants, State Grants and State Aid, are presented for purposes of additional analysis and are not a required part of the basic financial statements of the Charter School. Such information is the responsibility of management and was derived from and relate directly to the underlying accounting and other records used to prepare the basic financial statements. The information has been subjected to the auditing procedures applied in the audit of the basic financial statements and certain additional procedures, including comparing and reconciling such information directly to the underlying accounting and other records used to prepare the basic financial statements or to the basic financial statements themselves, and other additional procedures in accordance with auditing standards generally accepted in the United States of America. In our opinion, the combining and individual nonmajor fund financial statements, schedules of expenditures of federal awards and state financial assistance are fairly stated in all material respects in relation to the basic financial statements as a whole.

Other Information

Management is responsible for the other information included in the annual report. The other information comprises the introductory section, financial schedules and statistical section but does not include the basic financial statements and our auditor's report thereon. Our opinions on the basic financial statements do not cover the other information, and we do not express an opinion or any form of assurance thereon.

In connection with our audit of the basic financial statements, our responsibility is to read the other information and consider whether a material inconsistency exists between the other information and the financial statements, or the other information otherwise appears to be materially misstated. If, based on the work performed, we conclude that an uncorrected material misstatement of the other information exists, we are required to describe it in our report.

Other Reporting Required by Government Auditing Standards

In accordance with *Government Auditing Standards*, we have also issued our report dated March 19, 2025 on our consideration of the Charter School's internal control over financial reporting and on our tests of its compliance with certain provisions of laws, regulations, contracts and grant agreements and other matters. The purpose of that report is to describe the scope of our testing of internal control over financial reporting and compliance and the results of that testing, and not to provide an opinion on the internal control over financial reporting or on compliance. That report is an integral part of an audit performed in accordance with *Government Auditing Standards* in considering the Charter School's internal control over financial reporting and compliance.

Olugbenga Olabintan, CPA

March 19, 2025
Newark, New Jersey

OLUGBENGA OLABINTAN
Certified Public Accountant/Consultant

A handwritten signature in black ink, appearing to read 'Olugbenga Olabintan', with a stylized flourish at the end.

Olugbenga Olabintan, CPA
Licensed Public School Accountant
No. 20CS00230200

Required Supplementary Information

Part I

Management's Discussion and Analysis

The Management's Discussion and Analysis (MD&A) provides an analysis of the Charter School's overall financial position and results of operations.

JERSEY CITY COMMUNITY CHARTER SCHOOL
Management's Discussion and Analysis
Year Ended June 30, 2024
(Unaudited)

Introduction

This section of Jersey City Community Charter School's annual financial report presents our discussion and analysis of the Charter School's financial performance and provides an overview of the Charter School's financial activities for the fiscal year ended June 30, 2024. It should be read in conjunction with the transmittal letter at the front of this report and the Charter School's financial statements, which follow this section.

Management's Discussion and Analysis (MD&A) is an element of Required Supplementary Information specified in the Governmental Accounting Standard Board's (GASB) Statement No. 34, *Basic Financial Statement – and Management's Discussion and Analysis- for State and Local Governments*. Certain comparative information between the current fiscal year and the prior fiscal year is required to be presented in the MD&A.

Financial Highlights

Key financial highlights for fiscal year 2024 are as follows:

- Net position of governmental activities ended the fiscal year with \$9,498,373. Net position of business-type activities, which represent food service operations ended the fiscal year with \$613,008.
- General revenues accounted for \$16,371,309 in revenue or 81 percent of total revenues of \$20,196,183. Program specific revenues, in the form of charges for services, grants, and contributions accounted for \$3,824,874 or 19 percent of total revenues.
- The Charter School had \$11,438,883 in expenses related to governmental activities; \$3,236,535 of these expenses is offset by operating grants and contributions. General revenues (primarily State aid) of \$16,371,309 helped to provide for the balance of these programs.
- The General Fund reported fund surplus at June 30, 2024, of \$20,021,792.

JERSEY CITY COMMUNITY CHARTER SCHOOL
Management's Discussion and Analysis
Year Ended June 30, 2024
(Unaudited)

Using the Basic Financial Statements

This annual report consists of a series of basic financial statements, required supplementary information, other supplementary information and notes to those statements and information.

The report is organized so the reader can understand Jersey City Community Charter School as a financial whole, or as an entire operating entity. The first two basic financial Statements, the Statement of Net Position and the Statement of Activities, are governmental-wide financial statements and provide overall information about the activities of the entire Charter School, presenting both an aggregate view of the Charter School's finances and a long-term view of those finances. The remaining basic financial statements are fund financial statements that focus on the individual parts of the government, reporting the Charter School's operation in more detail than the government-wide statements. The fund financial statements also look at the Charter School's most significant funds with all other non-major funds presented in total in a single column. For Jersey City Community Charter School, the General Fund is the most significant fund.

The governmental funds statements tell how general government services were financed in the short-term as well as what remains for future spending.

Proprietary fund statements offer short and long-term financial information about the activities, the government operates like a business, such as food service.

Fiduciary fund statements provide information about financial relationship in which the Charter School acts solely as a trustee or agent for the benefits of others, to whom the resources in question belong.

The financial statements also include notes that explain some of the information in the financial statements and provide more detailed data. The statements are followed by a section of Required Supplementary Information that further explains and supports the information in the financial statements.

Reporting the Charter School as a Whole

Statement of Net Position and Statements of Activities

While this report contains the fund used by the Charter School to provide programs and activities, the view of the Charter School as a whole looks at all financial transactions and asks the question, "how did we do financially during fiscal year 2024?" The statements of Net Position and the Statement of Activities answer this question. These Statements include all the Charter School's assets and liabilities using the accrual basis of accounting similar to the accounting system used by most private sector companies. This basis of accounting takes into account all of the current year's revenues and expenses regardless of when cash was received or paid.

JERSEY CITY COMMUNITY CHARTER SCHOOL
Management's Discussion and Analysis
Year Ended June 30, 2024
(Unaudited)

Statement of Net Position and Statement of Activities-continued

These two statements report the Charter School's net position and changes in those assets. This change in net position is important because it identifies whether the financial position of the Charter School has improved or diminished for the Charter School as a whole. The cause of this change may be the result of many factors some financial, some not. Non-financial factors include the property tax base of the School District where the Charter School is located, current educational funding laws in New Jersey, facilities conditions, required educational programs, and other factors. In the Statements of Net Position and the Statements of Activities, the Charter School is divided into two distinct kinds of activities:

Governmental Activities – Most of the Charter School's programs and services are reported here including instructions, extracurricular activities, curriculum, staff development, special education and other support services, operation and maintenance of plant, pupil transportation, health services and general administration.

Business-Type Activity – Services are provided on a charge for goods or services or reimbursement basis to recover the expenses of the goods or services provided. The food service operations/after care programs enterprise fund is reported as a business activity.

Reporting the Charter School's Most Significant Funds

Fund Financial Statements

Fund financial reports provide detailed information about the Charter School's major funds-not the Charter School as a whole. Funds are accounting devices that the Charter School uses to keep track of a multitude of financial transactions. The Charter School's only major governmental fund is the General Fund.

Governmental Funds

Most of the Charter School's activities are reported in governmental funds, which focus on how monies flow into and out of those funds and the balances left at fiscal year-end for spending in future periods. These funds are reported using an accounting method called modified accrual accounting. Which measures cash and all other financial assets that can readily be converted to cash. The governmental fund statement provides a detailed short-term view of the Charter School's general government operations and the basic services it provides. Governmental fund information helps determine whether there are more or less financial resources that can be spent in the near future to finance educational programs. The relationship, or differences, between governmental activities reported in the Statement of Net Position and the Statement of Activities and the governmental funds are reconciled in the financial statements.

JERSEY CITY COMMUNITY CHARTER SCHOOL
Management's Discussion and Analysis
Year Ended June 30, 2024
(Unaudited)

Enterprise Fund

The enterprise fund uses the same basis of accounting as business-type activities; therefore, these statements are essentially the same.

The Charter School as a Whole

The perspective of the Statement of Net Position is of the Charter School as a whole. Net position may serve over time as useful indicator of a government's financial position. In the case of the Charter School, assets exceeded liabilities by \$10,111,381 at the close of 2024. The following table provides a summary of net position relating to the Charter School's governmental and business type activities:

	Governmental Activities		Business Type Activities		Total	
	2024	2023	2024	2023	2024	2023
Assets and deferred outflows of resources						
Current assets	\$ 19,393,500	\$ 13,820,426	\$ 613,008	\$ 583,667	\$ 20,006,508	\$ 14,404,093
Capital assets, net	1,226,965	1,699,408	-	-	1,226,965	1,699,408
Deferred outflows of resources	814,612	630,670	-	-	814,612	630,670
Total assets and deferred outflows of resources	21,435,077	16,150,504	613,008	583,667	22,048,085	16,734,171
Liabilities and deferred outflows of resources:						
Current liabilities	(338,228)	983,093	-	-	(338,228)	983,093
Long term liabilities	11,993,600	13,043,516	-	-	11,993,600	13,043,516
Deferred outflows of resources	281,332	794,483	-	-	281,332	794,483
Total liabilities and deferred inflows of resources	11,936,704	14,821,092	-	-	11,936,704	14,821,092
Net position						
Invested in						
Capital assets						
(net of related debt)	(6,354,909)	(6,446,865)	-	-	(6,354,909)	(6,446,865)
Restricted for debt service	1,236,246	1,186,043	-	-	1,236,246	1,186,043
Restricted for debt redemption					-	-
-and future capital expenditures	12,500,000				12,500,000	-
Restricted for escrow	77,601	76,831	-	-	77,601	76,831
Unrestricted	2,039,435	6,513,403	613,008	583,667	2,652,443	7,097,070
Total net position	\$ 9,498,373	\$ 1,329,412	\$ 613,008	\$ 583,667	\$ 10,111,381	\$ 1,913,079

JERSEY CITY COMMUNITY CHARTER SCHOOL
Management's Discussion and Analysis
Year Ended June 30, 2024
(Unaudited)

The largest portion of the Charter School's net position is its current assets. The Charter School uses these current assets to provide services.

The total net position of the Charter School increased by \$8,198,302 during the current fiscal year ended June 30, 2024. The majority of the increase was attributable to a surplus of \$8,168,961 in the Governmental Activities. Operating grants and contributions increased by 54 percent.

The table that follows reflects the change in net position for fiscal year 2024.

	Governmental Activities		Business Type Activities		Total	
	2024	2023	2024	2023	2024	2023
Revenues						
Program revenues:						
Charge for services	\$0	\$0	\$155,202	\$153,862	\$155,202	\$153,862
Operating grants and contributions	3,236,535	2,590,311	433,137	422,832	3,669,672	3,013,143
Total program revenues	3,236,535	2,590,311	588,339	576,694	3,824,874	3,167,005
General revenues:						
Local aid	12,017,765	8,483,415	-	-	12,017,765	8,483,415
Federal and state aid	4,070,178	4,796,086	-	-	4,070,178	4,796,086
Miscellaneous	283,366	207,180	-	-	283,366	207,180
Special items	-	-	-	-	-	-
Transfers	-	-	-	-	-	-
Total general revenues	16,371,309	13,486,681	-	-	16,371,309	13,486,681
Total revenues	19,607,844	16,076,992	588,339	576,694	20,196,183	16,653,686
Expenses:						
Instructions	3,991,796	3,406,374	-	-	3,991,796	3,406,374
Administrative & support services	6,672,644	6,028,644	-	-	6,672,644	6,028,644
Debt service - interest	520,993	520,993	-	-	520,993	520,993
Unallocated depreciation	253,450	655,305	-	-	253,450	655,305
Food service	-	-	543,123	492,833	543,123	492,833
After school programs	-	-	15,875	31,963	15,875	31,963
Total expenses	11,438,883	10,611,316	558,998	524,796	11,997,881	11,136,112
Change in net position	\$ 8,168,961	\$ 5,465,676	\$ 29,341	\$ 51,898	\$ 8,198,302	\$ 5,517,574

Governmental Activities

The Statement of Activities reflects the cost of program services and the charges for services and operating grants and contributions offsetting those services. The table below, for government activities, indicates the total cost of services and the net cost of services. It identifies the cost of these services supported by unrestricted state entitlements for the fiscal year ended June 30, 2024.

JERSEY CITY COMMUNITY CHARTER SCHOOL
Management's Discussion and Analysis
Year Ended June 30, 2024
(Unaudited)

Governmental Activities - *continued*

	Total Cost of Services	Net Cost of Services
Instruction	\$ 3,991,796	\$ 2,764,213
Administrative & support services	6,672,644	4,767,642
Debt service	520,993	520,993
Unallocated depreciation	253,450	149,500
Total Expenses	<u>\$ 11,438,883</u>	<u>\$ 8,202,348</u>

Business-Type Activity

The business-type activity of the Charter School consists of the food service operation and the after-school programs. These programs had revenues of \$588,339 (including a board contribution of \$-0-) and operating expenses of \$558,998 for fiscal year 2024. The Charter School intended to have food services be self-operating without assistance from the General Fund.

The Charter School's Funds

The Charter School's governmental funds are accounted for using the modified accrual basis of accounting. All governmental funds had revenues of \$19,590,131 and expenditures of \$11,851,408. The positive change in fund balance for the year was \$7,738,723. The cumulative fund balance from the prior years was \$13,017,333.

The Charter School's budget is prepared according to New Jersey law and is based on accounting for certain transactions on a basis of cash receipts, disbursements, and encumbrances. The most significant budgeted fund is the general fund.

During the course of fiscal 2024, the Charter School amended its General Fund budget as needed. The Charter School uses state-aid and other revenue-based budget. The budgeting systems are designed to tightly control total budget, but provide flexibility for Charter School's management teams.

For the General Fund, final budgeted revenues were \$15,431,707, which included a local tax levy of \$12,384,283. Expenditures and other financing uses were budgeted at \$9,486,144. The Charter School anticipated budgeted fund balance of \$18,213,111 in its 2023-2024 budget year.

JERSEY CITY COMMUNITY CHARTER SCHOOL
Management's Discussion and Analysis
Year Ended June 30, 2024
(Unaudited)

The State of New Jersey reimbursed the Charter School \$185,156 during the year ended June 30, 2024 for the employer's share of social security contributions for TPAF members. Also, the State paid \$1,195,692 into the TPAF pension representing on-behalf employer's portion of the TPAF Pension System Contributions, TPAF Post-Retirement Medical Benefits Contributions and TPAF Long Term Disability Insurance Premium Contributions for the Charter School. The unbudgeted amounts were included in both revenues and expenditures.

Capital Assets

At the end of fiscal year 2024, the Charter School had \$1,226,965 invested in capital assets in its governmental activities.

The Charter School's 2024-2025 budget anticipate spending \$5,000,000 on capital projects which could extend over the next two years.

Long-term debt

At June 30, 2024, the Charter School had \$9,185,000 in long-term debt (\$180,000 of which was due within a year) – Serial Bonds issued in 2016. The Charter School had \$2,998,600 at June 30, 2024 in net pension liability regarding the Public Employees Retirement System. More detailed information about the Charter School's long term obligations is presented in the notes to the financial statements.

Economic Factors and Next Year's Budget

The State of New Jersey and indeed the entire United States continue to face serious budgetary constraints and a result of the sharp downturn in the economy. These impact the amount of state and federal aids allocated to charter schools. This reality was taken into account when adopting the general fund budget for 2024-2025. Nothing was done to compromise the quality of the programs in place in our Charter School during the regular instructional day. The budget was prepared to ensure that all students have the textbooks, materials, supplies, equipment and programs they need to meet New Jersey's Core Curriculum Content Standards. The budget was adopted with a redirection of funds to maintain the quality of the regular school day.

COVID-19 Pandemic

In December 2019, an outbreak of a novel strain of coronavirus (COVID-19) originated in Wuhan, China and has since spread to other countries, including the U.S. On March 11, 2020, the World Health Organization characterized COVID-19 as a pandemic. In addition, as of March 21, 2020, New Jersey State Governor Phil Murphy ordered the closure of the physical location of every "non-life sustaining" and "non-essential" business for what may be an extended period of time. The Charter School had to close its physical locations. Future potential impacts may include continued disruptions or restrictions on its employees' ability to work and impairment of its ability to obtain grants and contributions. Though the impact on the Charter School's

operations cannot be reasonably estimated at this date, it is likely that there will be an impact on certain revenue in the General Fund and other state aid and the local tax levy. Nonetheless, the degree of any future impact to the Charter School's operations and finances is difficult to predict due to the dynamic nature of the COVID-19 pandemic and any additional actions that may be taken by governmental and other health care authorities to manage the COVID-19 pandemic.

To date, the overall finances and operations of the Charter School have not been materially adversely affected by the COVID-19 pandemic.

During the previous fiscal year ended June 30, 2021, the Charter School applied for and was approved a \$350,000 loan under the Paycheck Protection Program created as part of the relief efforts related to COVID-19 and administered by the Small Business Administration. The loan accrued interest at 1%, but payments were not required to begin for ten months after the expiration of the covered period which is a maximum of 24 weeks from the funding date. The Charter School was eligible for loan forgiveness of up to 100% of the loan, upon meeting certain requirements. The loan was uncollateralized and was fully guaranteed by the Federal government.

The loan was funded on June 8, 2021. The Charter School applied for the loan forgiveness during the prior fiscal year ended June 30, 2023. The loan forgiveness was approved and entire loan amount was recognized as revenue during the prior year ended June 30, 2023.

Contacting the Charter School's Financial Management

This financial report is designed to provide our citizens, taxpayers, investors, and creditors with a general overview of the Charter School's finances and to reflect the Charter School's accountability for the monies it receives. Questions about this report or additional financial information needs should be directed to:

JERSEY CITY COMMUNITY CHARTER SCHOOL
Business Office, 128 Danforth Avenue
Jersey City, New Jersey 07305
Tel: (201) 433-2288* Fax: (201) 433-5803

Basic Financial Statements

Government-wide Financial Statements

The government-wide financial statements provide a financial overview of the Charter School's operations. These financial statements present the financial position and operating results of all governmental activities and business-type activities as of and for the Year Ended June 30, 2024.

JERSEY CITY COMMUNITY CHARTER SCHOOL

A-1

Statement of Net Position

June 30, 2024

	Governmental Activities	Business-type Activities	Total
Assets			
Cash and cash equivalents	\$ 16,078,631	\$ 2,478,525	\$ 18,557,156
Restricted cash and cash equivalents	1,313,847	-	1,313,847
Accounts receivable	1,616,623	76,545	1,693,168
Other current assets	-	-	-
Interfund receivables	-	(1,942,062)	(1,942,062)
Bond issuance cost (net of accumulated amortization of \$224,863)	384,399		384,399
Capital assets (net of accum deprec of \$12,172,136)	1,226,965	-	1,226,965
Total assets	<u>20,620,465</u>	<u>613,008</u>	<u>21,233,473</u>
Deferred outflows of resources			
Pension deferred outflows	814,612	-	814,612
Total assets and deferred outflows of resources	<u><u>\$ 21,435,077</u></u>	<u><u>\$ 613,008</u></u>	<u><u>\$ 22,048,085</u></u>
Liabilities			
Accounts payable	\$ -	\$ -	\$ -
Intergovernmental payables - state	9,192	-	9,192
Interfunds payables	(1,942,062)	-	(1,942,062)
Other liabilities	-	-	-
Payroll deductions and withholdings	-	-	-
Deferred revenue	185,915	-	185,915
Compensated absences	1,218,727	-	1,218,727
Current portion of long term obligations	190,000	-	190,000
Noncurrent portion of long term obligations	8,995,000	-	8,995,000
Net pension liability	2,998,600	-	2,998,600
Total liabilities	<u>11,655,372</u>	<u>-</u>	<u>11,655,372</u>
Deferred inflows of resources			
Pension deferred inflows	281,332	-	281,332
Total liabilities and deferred inflows of resources	<u>11,936,704</u>	<u>-</u>	<u>11,936,704</u>
Net position			
Invested in capital assets net of related debt	(6,354,909)	-	(6,354,909)
Restricted for escrow	77,601	-	77,601
Restricted for debt service	1,236,246	-	1,236,246
Restricted (bond debt redemption and future capital expenditures)	12,500,000	-	12,500,000
Restricted for student activity	(5,255)	-	(5,255)
Unrestricted, undesignated	2,044,690	613,008	2,657,698
Total net position	<u>9,498,373</u>	<u>613,008</u>	<u>10,111,381</u>
Total liabilities, deferred inflows of resources & net position	<u><u>\$ 21,435,077</u></u>	<u><u>\$ 613,008</u></u>	<u><u>\$ 22,048,085</u></u>

See independent auditor's report and accompanying notes to basic financial statements.

JERSEY CITY COMMUNITY CHARTER SCHOOL

A-2

Statement of Activities

Year ended June 30, 2024

Functions/Programs	Expenses	Program Revenues		Net (Expense) Revenue and Changes in Net Position		Total
		Charges for Services	Operating Grants and Contributions	Governmental Activities	Business-type Activities	
Governmental activities:						
Instruction:						
Regular	\$ 3,991,796	\$ -	\$ 1,227,583	\$ (2,764,213)	\$ -	\$ (2,764,213)
Administrative & Support services:	-	-	-	-	-	-
General administration	3,096,923	-	-	(3,096,923)	-	(3,096,923)
Support services	3,575,721	-	1,905,002	(1,670,719)	-	(1,670,719)
Capital outlay	-	-	103,950	103,950	-	103,950
Debt service:	-	-	-	-	-	-
Interest	491,663	-	-	(491,663)	-	(491,663)
Amortization of bond issuance costs	29,330	-	-	(29,330)	-	(29,330)
Unallocated depreciation	253,450	-	-	(253,450)	-	(253,450)
Unallocated amortization	-	-	-	-	-	-
Total governmental activities	<u>11,438,883</u>	<u>-</u>	<u>3,236,535</u>	<u>(8,202,348)</u>	<u>-</u>	<u>(8,202,348)</u>
Business-type activities:						
Food services	543,123	2,641	433,137	-	(107,345)	(107,345)
After care programs	15,875	152,561	-	-	136,686	136,686
Total business-type activities	<u>558,998</u>	<u>155,202</u>	<u>433,137</u>	<u>-</u>	<u>29,341</u>	<u>29,341</u>
Total primary government	<u>\$ 11,997,881</u>	<u>\$ 155,202</u>	<u>\$ 3,669,672</u>	<u>(8,202,348)</u>	<u>29,341</u>	<u>(8,173,007)</u>
General revenues and transfers:						
Local sources				12,017,765	-	12,017,765
Federal and state sources				4,070,178	-	4,070,178
Use of money and property				-	-	-
Miscellaneous				283,366	-	283,366
Transfers				-	-	-
Total general revenues and transfers				<u>16,371,309</u>	<u>-</u>	<u>16,371,309</u>
Change in net position				<u>8,168,961</u>	<u>29,341</u>	<u>8,198,302</u>
Net position - beginning				1,329,412	583,667	1,913,079
Net position - ending				<u>\$ 9,498,373</u>	<u>\$ 613,008</u>	<u>\$ 10,111,381</u>

See independent auditor's report and accompanying notes to basic financial statements.

Funds Financial Statements

Governmental Funds

JERSEY CITY COMMUNITY CHARTER SCHOOL
Governmental Funds

B-1

Balance Sheet

June 30, 2024

	General Fund	Special Revenue Fund	Debt Service Fund	Totals Governmental Funds
Assets				
Cash and cash equivalents	\$ 14,700,740	\$ 1,377,891	\$ -	\$ 16,078,631
Restricted cash and cash equivalents	574,328	-	-	574,328
Restricted cash - bond accounts	-	-	739,519	739,519
State	25,025	-	-	25,025
Federal	-	1,454,470	-	1,454,470
Other	137,128	-	-	137,128
Other current assets	-	-	-	-
Interfund receivable	4,593,763	-	-	4,593,763
Total assets	<u>\$ 20,030,984</u>	<u>\$ 2,832,361</u>	<u>\$ 739,519</u>	<u>\$ 23,602,864</u>
Liabilities and Fund Balances				
Interfund accounts payables	\$ -	\$ 2,651,701	\$ -	\$ 2,651,701
Accounts payable	-	-	-	-
Intergovernmental payables - federal	-	-	-	-
Intergovernmental payables - state	9,192	-	-	9,192
Other liabilities	-	-	-	-
Paycheck Protection Program (PPP) Loan	-	-	-	-
Payroll deductions and withholdings	-	-	-	-
Deferred revenue	-	185,915	-	185,915
Total liabilities	<u>9,192</u>	<u>2,837,616</u>	<u>-</u>	<u>2,846,808</u>
 Fund balances:				
Restricted (bond debt redemption and future capital expenditures)	12,500,000			12,500,000
Restricted (debt service)	496,727		739,519	1,236,246
Restricted - student activity fund		(5,255)		(5,255)
Undesignated	7,025,065	-	-	7,025,065
Total fund balances	<u>20,021,792</u>	<u>(5,255)</u>	<u>739,519</u>	<u>20,756,056</u>
Total liabilities and fund balances	<u>\$ 20,030,984</u>	<u>\$ 2,832,361</u>	<u>\$ 739,519</u>	
 Amounts reported for governmental activities in the statement of net position (A-1) are different because:				
 Capital assets used in governmental activities are not financial resources and therefore are not reported in the funds.				
Cost of capital assets	\$ 13,399,101			
Accumulated depreciation	<u>(12,172,136)</u>			
	<u>\$ 1,226,965</u>			1,226,965
 Long-term liabilities, including capital leases and compensated absences are not due and payable in the current period and therefore are not reported as liabilities in the funds				
Bonds payable				(9,185,000)
Compensated absences payable				(1,218,727)
Capitalized bond issuance cost	\$ 609,262			
Accumulated amortization	<u>(224,863)</u>			
Capitalized bond issuance cost, net of accumulated amortization	<u>\$ 384,399</u>			384,399
 Deferred Outflows related to pension contributions subsequent to the Net Pension Liability measurement date and other deferred items are not current financial resources and therefore are not reported in the fund statements. (See Note 7)				814,612
 Deferred Inflows related to pension actuarial gains from experience and differences in actual return and assumed returns and other deferred items are not reported as liabilities in the fund statements. (See Note 7)				(281,332)
 Long-term liabilities, including net pension liability, are not due and payable in the current period and therefore are not reported as liabilities in the funds (see Note 7)				(2,998,600)
 Right-of-use assets used in governmental activities are not financial resources and therefore are not reported in the funds (see Note 4):				
Cost of right-of-use assets	\$ *****			
Accumulated amortization	<u>-</u>			
Cost of right-of-use assets, net of accumulated amortization	<u>\$ *****</u>			*****
 Lease liabilities used in governmental activities are not financial resources and therefore are not reported in the funds (see Note 5).				*****
 Net position of governmental activities - A-1				<u>\$ 9,498,373</u>

***** Note

The Charter School adopted GASB 87 for Leases during the previous year ended June 30, 2022. However, the Charter School did not have leases that met the requirements of GASB 87, therefore no information available for reporting for the current year ended June 30, 2024.

See independent auditor's report and accompanying notes to basic financial statements.

JERSEY CITY COMMUNITY CHARTER SCHOOL
Governmental Funds

B-2

Statement of Revenues, Expenditures and Changes in Fund Balances
Year ended June 30, 2024

	General Fund	Special Revenue Fund	Debt Service Fund	Total
Revenues:				
Local sources:				
Local tax levy	\$ 12,017,765	\$ -	\$ -	\$ 12,017,765
Miscellaneous	283,366	29,726	-	313,092
Total revenues - local sources	12,301,131	29,726	-	12,330,857
Federal sources	7,625	3,189,096	-	3,196,721
State sources	2,681,705	-	-	2,681,705
Reimbursed TPAF-Social Security (non-budgeted)	185,156	-	-	185,156
TPAF pension, post retirement medical and long-term disability premium benefits on-behalf payments (non-budgeted)	-	-	-	-
	1,195,692	-	-	1,195,692
Total revenues	16,371,309	3,218,822	-	19,590,131
 Current expense:				
Instruction	2,764,213	1,227,583	-	3,991,796
Administrative	2,036,644	-	-	2,036,644
Support services	1,642,296	1,905,002	28,423	3,575,721
Capital outlay	90,786	103,950	-	194,736
Reimbursed and on-behalf payments:				
Reimbursed TPAF-Social Security (non-budgeted)	185,156	-	-	185,156
TPAF pension, post retirement medical and long-term disability premium benefits on-behalf payments (non-budgeted)	-	-	-	-
	1,195,692	-	-	1,195,692
Debt service:				
Principal	-	-	180,000	180,000
Interest	-	-	491,663	491,663
Total expenditures	7,914,787	3,236,535	700,086	11,851,408
Excess (deficiency) of revenues over (under) expenditures	8,456,522	(17,713)	(700,086)	7,738,723
 Other financing sources:				
Transfer to cover food deficit	-	-	-	-
Transfer to debt service fund - principal	(522,278)	-	522,278	-
Transfer to debt service fund - interest	(180,000)	-	180,000	-
	(702,278)	-	702,278	-
Excess (deficiency) of revenues and other financing sources over (under) expenditures and other financing uses	7,754,244	(17,713)	2,192	7,738,723
Fund balances, beginning of year	12,267,548	12,458	737,327	13,017,333
Prior period adjustment	-	-	-	-
Fund balances, beginning of year (restated)	12,267,548	12,458	737,327	13,017,333
 Fund balances, end of year	\$ 20,021,792	\$ (5,255)	\$ 739,519	\$ 20,756,056

See independent auditor's report and accompanying notes to basic financial statements.

JERSEY CITY COMMUNITY CHARTER SCHOOL
Reconciliation of the Statement of Revenues, Expenditures
And Changes in Fund Balances of Governmental Funds
to the Statement of Activities
Year ended June 30, 2024

B-3

Total net change in fund balances - governmental funds (B-2) **\$ 7,738,723**

Amounts reported for governmental activities in the statement of activities (A-2) are different because:

Capital outlays are reported in governmental funds as expenditures. However, in the Statement of Activities, the cost of those assets is allocated over their estimated useful lives as depreciation expense. This is the amount by which capital outlays exceeded depreciation expenses in the period. Additionally, in the Statement of Activities gains or (losses) are recognized upon disposition.

Depreciation expense	\$	(253,450)	
Capital outlays		194,736	
			(58,714)

Repayment of long term loan principal is an expenditure in the governmental funds, but the repayment reduces long-term liabilities in the Statement of Net Position and it is not reported in the Statement of Activities.

Repayment of long term loan principal		180,000	
			180,000

Governmental funds report the effect of premiums and similar items when the debt is first issued, whereas the amounts are deferred and amortized in the statement of activities. This represents the current year amortization related to the deferred interest costs.

Bond issuance costs		-	
Amortization of bond issuance costs		(29,330)	
			(29,330)

Some expenses reported in the statement of activities do not require the use of current financial resources and, therefore, are not reported as expenditures in governmental funds.

Compensated absences		(100,666)	
			(100,666)

Adoption of GASB 87 resulted in an increase in right-to-use lease assets offset by the current year amortization of the right-to-use assets, allocated over the term of the leases

Amortization expense		*****	
----------------------	--	-------	--

Adoption of GASB 87 resulted in an increase in lease liabilities offset by the current year principal payments on lease liabilities. Principal payments on lease liabilities decrease liabilities in the statement of net position, but are included in the governmental funds as expenses

Principal payments		*****	
--------------------	--	-------	--

Pension contributions are reported in governmental funds as expenditures. However, in the statement of activities, the contributions are adjusted for actuarial valuation adjustments, including service and interest costs, administrative costs, investment returns, and experience/assumption. This is the amount by which net pension liability and deferred inflows/outflows related to pension changed during the period.

438,948

Change in net position of governmental activities (A-2)

\$ 8,168,961

***** Note

The Charter School adopted GASB 87 for Leases during the prior year ended June 30, 2022. However, the Charter School did not have leases that met the requirements of GASB 87, therefore no information available for reporting for the current year ended June 30, 2023.

See independent auditor's report and accompanying notes to basic financial statements.

Proprietary Funds

JERSEY CITY COMMUNITY CHARTER SCHOOL
Proprietary Funds

B-4

Statement of Net Position

June 30, 2024

Assets

Current assets:

Cash and cash equivalents	\$2,478,525
Accounts receivable:	-
Federal	74,964
State	1,581
Other current assets	-
Interfunds receivable	(1,942,062)
Total current assets	<u>\$ 613,008</u>

Liabilities

Current liabilities:

Interfunds payable	\$ -
Accounts payable	-
Total current liabilities	<u>\$ -</u>

Net position

Unrestricted	613,008
Total net position	<u><u>\$ 613,008</u></u>

See independent auditor's report and accompanying notes to basic financial statements.

JERSEY CITY COMMUNITY CHARTER SCHOOL
Proprietary Funds

B-5

Statement of Revenues, Expenditures and Changes in Net Assets

Year ended June 30, 2024

Operating revenues:	
Charges for services:	
Daily sales - reimbursable program	\$ 155,202
Daily sales - non-reimbursable program	-
Miscellaneous revenue	-
Total Operating revenues	<u>155,202</u>
Operating expenses:	
Cost of sales - reimbursable program	446,432
Cost of sales - non-reimbursable program	-
Salaries	106,920
Employee benefits	-
Professional /technical service	660
Supplies and materials	-
Depreciation	-
Miscellaneous	4,986
Total operating expenses	<u>558,998</u>
Operating income/(loss)	<u>(403,796)</u>
Nonoperating revenues:	
State sources:	
State school lunch program	5,566
State school breakfast program	2,998
Federal sources:	-
National school lunch program	322,163
National school breakfast program	77,143
After school snacks program	-
Healthy, Hunger-Free Kids Act	6,422
Summer Food Program	653
Emergency Operation Cost Reimbursements	18,192
Total nonoperating revenues	<u>433,137</u>
Net income/(loss) before contributions & transfers	29,341
Other financing sources:	
Transfer in/(out) - board contribution	<u>-</u>
	<u>-</u>
Change in net position	29,341
Total net position-beginning of year	<u>583,667</u>
Total net position-end of year	<u><u>\$ 613,008</u></u>

See independent auditor's report and accompanying notes to basic financial statements.

JERSEY CITY COMMUNITY CHARTER SCHOOL
Proprietary Fund

B-6

Statement of Cash Flows

Year ended June 30, 2024

Cash flows from operating activities

Operating loss	\$ (403,796)
Adjustment to reconcile operating loss to net cash used in operating activities:	
Changes in assets and liabilities:	
Accounts receivable	(51,338)
Due to/from general fund	2,150,006
Accounts payable	-
Net cash used in operating activities	<u>1,694,872</u>

Cash flows from noncapital financing activities:

Cash received from state reimbursements	8,564
Cash received from federal reimbursements	424,573
Transfers within fund	-
Operating subsidies and transfers from other funds	-
Net cash provided by noncapital financing activities	<u>433,137</u>

Cash flows from investing activities

	-
Net change in cash and cash equivalents	2,128,009
Cash and cash equivalents, beginning	350,516
Cash and cash equivalents, ending	<u>\$ 2,478,525</u>

See independent auditor's report and accompanying notes to basic financial statements.

**Fiduciary Funds
Not Applicable**

Notes to Basic Financial Statements

JERSEY CITY COMMUNITY CHARTER SCHOOL
(County of Hudson)
Notes to the Basic Financial Statements
Year Ended June 30, 2024

1 Description of the Charter School and Reporting Entity

Jersey City Community Charter School (the “Charter School” was incorporated in the State of New Jersey on March 13, 1997 as a non-for-profit corporation for the purpose of operating and maintaining a public school under a charter granted by the State of New Jersey, which promotes comprehensive educational reform by infusing innovation into the public education system. It is an instrumentality of the State of New Jersey, established to function as an education institution. The Charter School’s Board of Trustees (the Board) is responsible for the fiscal control of the Charter School. A Principal/Chief School Administrator is appointed by Board and is responsible for the administrative control of the Charter School. Under the existing the statutes, the Charter School’s duties and powers include, but not limited to the development and adoption of a school program; the establishment, organization and operation of schools; and the acquisition, maintenance and disposition of school property.

A reporting entity is comprised of the primary government, component units and other organizations that are included to ensure that the financial statements of the Charter School are not misleading. The primary government consists of all funds, departments, boards and agencies that are not legally separate from the Charter School. For the Charter School, this includes general operations, food service and student related activities of the Charter School.

The primary criterion for including activities within the Charter School’s reporting entity, as set forth in Section 2100 of the GASB Codification of Governmental Accounting and Financial Reporting Standards, is the degree of oversight responsibility maintained by the Charter School. Oversight responsibility includes financial interdependency, selection of governing authority, designation of management, and ability to significantly influence operations and accountability for fiscal matters. The combined financial statements include all funds of the Charter School over which the Board exercises operating control. Based on the aforementioned criteria, the Charter School has no component units to be included in the reporting entity. Further, the Charter School is not includable in any other reporting entity on the basis of such criteria.

Jersey City Community Charter School Board of Trustees also has broad financial responsibilities, including the approval of the annual budget and the establishment of a system of accounting and budgetary controls.

Its mission is to establish a character school to serve as a neighborhood resource and as a model for other similar schools. Jersey City Community Charter School is committed to achieving the New Jersey Core Curriculum Content Standards and producing high academic achievement by all students. The Charter School will integrate a holistic curriculum, utilize learner center techniques, family and care giver centered approaches, comprehensive community involvement, cutting edge technology and an intimate nurturing environment that will enhance positive self-images.

JERSEY CITY COMMUNITY CHARTER SCHOOL
(County of Hudson)
Notes to the Basic Financial Statements
Year Ended June 30, 2024

2 Summary of Significant Accounting Policies

This summary of significant accounting policies of Jersey City Community Charter School is presented to assist in understanding the Charter School's financial statements and notes are a representation of the Charter School's management, who is responsible for their integrity and objectivity. These accounting policies conform to generally accepted accounting principles in the United States as applied to governmental units and have been consistently applied in the preparation of these financial statements.

The financial statements of Jersey City Community Charter School (the "Charter School") have been prepared in conformity with generally accepted accounting principles (GAAP) as applied to governmental units. GASB is the accepted standard-setting body for establishing governmental accounting and financial reporting principles.

The Charter School also applies Financial Accounting Standards Board (FASB) pronouncements issued on or before November 30, 1989, to its governmental and business-type activities and to its enterprise fund unless they conflict with or contradict GASB pronouncements. The most significant of the Charter School's accounting policies are described below:

A Basis of Presentation

The Charter School's basic financial statements consist of government-wide statements, including a statement of net position and a statement of activities, and fund financial statements that provide a more detailed level of financial information.

Charter School Government-wide Financial Statements

The statement of net position and the statement of activities display information about the Charter School as a whole. These statements include the financial activities of the Charter School, except for fiduciary funds.

The statement of net position presents the financial condition of the governmental and business-type activities of the Charter School at year-end. The statement of activities presents a comparison between direct expenses and program revenues for each program or function of the Charter School's governmental and business-type activities. Direct expenses are those that are specifically associated with a service, program or department and are therefore clearly identifiable to a particular function. Program revenues include charges paid by the recipient of the goods or services offered by the program and grants and contributions that are restricted to meeting the operational or capital requirements of a particular program. Revenues that are not classified as program revenues are presented as general revenues of the Charter School, with certain limited exceptions. The comparison of direct expenses with program revenues identifies the extent to which each governmental function is self-financing or draws from the general revenues of the Charter School.

JERSEY CITY COMMUNITY CHARTER SCHOOL
(County of Hudson)
Notes to the Basic Financial Statements
Year Ended June 30, 2024

2 Summary of Significant Accounting Policies - *continued*

The governmental activities generally are financed through federal and state awards, taxes and other non-exchange revenues. Business-type activities are financed in whole or in part by fees charged to external parties for goods or services.

Fund Financial Statements

Fund financial statements of the Charter School are organized into funds, each of which is considered to be separate accounting entities. Each fund is accounted for by providing a separate set of self-balancing accounts that constitute its assets, liabilities, fund equity, revenues, and expenditure/expenses. Funds are organized into three major categories: governmental, proprietary, and fiduciary. An emphasis is placed on major funds within the governmental and proprietary categories. A fund is considered major if it is the primary operating fund of the Charter School. The New Jersey Department of Education (NJDOE) requires that all funds be reported as major, as it is considered important for public interest and to promote consistency among Charter Schools financial reporting in the State of New Jersey.

B Fund Accounting

The Charter School segregates transactions related to certain Charter School functions or activities in separate funds in order to aid financial management and to demonstrate legal compliance. Fund financial statements are designed to present financial information of the Charter School at a more detailed level.

Governmental Funds

Governmental funds are those funds through which most governmental functions typically are financed. Governmental fund reporting focuses on the sources, uses and balances of current financial resources. Expendable assets are assigned to the various governmental funds according to the purposes for which they will be paid. The difference between governmental fund assets and liabilities is reported as fund balance. The following are the Charter Schools' major governmental funds:

General Fund - The General Fund is the primary operating fund of the Charter School. It is used to account for all financial resources except those that are legally or administratively required to be accounted for in another fund. Included are certain expenditures for vehicles and movable instructional or non-instructional equipment which are classified in the Capital Outlay sub-fund.

JERSEY CITY COMMUNITY CHARTER SCHOOL
(County of Hudson)
Notes to the Basic Financial Statements
Year Ended June 30, 2024

2 Summary of Significant Accounting Policies - *continued*

As required by the New Jersey Department of Education, the Charter School included budgeted capital outlay in this fund. Generally accepted accounting principles as they pertain to governmental entities state that General Fund resources may be used to directly finance capital outlays for long-lived improvements as long as the resources in such cases are derived exclusively from unrestricted revenues.

Resources for budgeted capital outlay purposes are normally derived from State of New Jersey aid and appropriated fund balance. Expenditures are those that result in the acquisition of or additions to fixed assets for land, existing buildings, improvements of ground, construction of buildings, additions to or remodeling of buildings and the purchase of built-in equipment. These resources can be transferred from and to current expense by board resolution.

Special Revenue Fund - The Special Revenue Fund is used to account for the proceeds of specific revenue from State and Federal Government, (other than major Capital Projects, Debt Service or the Enterprise Funds) and local appropriations that legally restricted to expenditures for specified purposes.

Capital Projects Fund - The Capital Projects Fund is used to account for all financial resources to be used for the acquisition or construction of major capital facilities (other than those financed by proprietary funds). The financial resources are derived from temporary notes or serial bonds that are specifically authorized by the voters as a separate question on the ballot either during the annual election or at a special election.

Proprietary Funds

The focus of Proprietary Funds' measurement is upon determination of net income, changes in net position, financial position and cash flows. The generally accepted accounting principles applicable are those similar to business in the private sector. The following is a description of the Proprietary Funds of the Charter School:

Enterprise Funds - The Enterprise Fund is utilized to account for operations that are financed and operated in a manner similar to private business enterprises where the intent of the Charter School is that the cost (i.e. expenses including depreciation and indirect costs) of providing goods and services to the students on a continuing basis be financed or recovered primarily through user charges; or where the Charter School has decided that periodic determination of revenues earned, expenses incurred, and/or net income is appropriated for capital maintenance, public policy, management control, accountability or other purposes.

JERSEY CITY COMMUNITY CHARTER SCHOOL
(County of Hudson)
Notes to the Basic Financial Statements
Year Ended June 30, 2024

2 Summary of Significant Accounting Policies - *continued*

All proprietary funds are accounted for on a cost of services or “capital maintenance” measurement focus. This means that all assets and all liabilities, whether current or non-current, associated with their activity are included on their balance sheets. Their reported fund equity (net total assets) is segregated into contributed capital and unreserved retained earnings, if applicable. Proprietary fund type operating statements present increases (revenue) and decreases (expenses) in net total assets.

Fiduciary Funds

Fiduciary or trust and Agency Funds are used to account for assets held by the Charter School in a trustee capacity or as an agent for individuals, private organizations, other governments and/or other funds. This fund category includes:

Trust Funds - Expendable Trust Funds (unemployment compensation) are accounted for in essentially the same manner as the governmental funds. The unemployment compensation trust fund is used to account for contributions from employees and the employer (the Charter School) and interest earned on the balance as well as payments to the State for reimbursements of unemployment claims. ***Agency Funds*** – Agency funds (*Payroll, Health Benefits and Student Activity Fund*) are used to account for the assets that the Charter School holds on behalf of others as their agent. Agency funds are custodial in nature and do not involved measurement of results of operations.

GASB Statement No 84 Fiduciary Activities – As of June 30, 2024, there was no Fiduciary Fund due to the adoption of GASB Statement 84, Fiduciary Activities.

C Measurement Focus and Basis of Accounting

Measurement focus is a term used to describe “which” transactions are recorded within the various financial statements. ***Basis of accounting*** refers to “when” transactions are recorded regardless of the measurement focus applied.

Measurement Focus

On the government-wide statements of net position and the statement of activities, both governmental and business-like activities are presented using the economic resources measurement focus. The accounting and financial reporting treatment applied to a fund is determined by its measurement focus. All governmental funds and expendable trust funds are accounted for using a current financial resources measurement focus. With this measurement focus, only current assets and current liabilities generally are included on the balance sheet. Operating statement of these funds present increases (i.e., revenues and other financing sources), and decreases (i.e. Expenditures and other finances uses) during a given period. These funds use fund balance as their measure of available spendable financial resources at the end of the period.

JERSEY CITY COMMUNITY CHARTER SCHOOL
(County of Hudson)
Notes to the Basic Financial Statements
Year Ended June 30, 2024

2 Summary of Significant Accounting Policies - *continued*

All proprietary funds are accounted for on a flow economic resources measurement focus. With this measurement focus, the accounting adjectives are the determination of operating income, changes in net position (or cost recovery), financial position, and cash flow. All assets and all liabilities, whether current or non-current, associated with their activities are included on the balance sheet. Fund equity (i.e., net total assets) is classified as net position.

Basis of Accounting

In the government wide statement of net position and statements of activities, both governmental and business like activities are presented using the accrual basis of accounting. Under the accrual basis of accounting revenues are recognized when earned and expenses are recognized when the liability, resulting from exchange and exchange like transactions, is incurred (i. e the exchange takes place).

In the fund financial statements, governmental fund and agency funds are presented on the modified accrual basis of accounting. Under the modified accrual basis of accounting, revenues are recognized when they become both measurable and available. “Measurable” means the amount of the transaction can be determine and “available” means collectible with the current period or soon enough thereafter to be used to pay liabilities of the current period. State equalization monies are recognized as revenue during the period in which they are appropriated. A one-year availability period is used for revenue recognition for all other governmental funds revenues.

D Budgets/Budgetary Control

Annual appropriated budgets are prepared in the spring of each year for the general and special revenue fund. The budgets are submitted to the County Office and the Education Commissioner for approval. Budgets except for the special revenue fund which is prepared using a non-GAAP budgetary basis, are prepared using the modified accrual basis of accounting. The legal level of budgetary control is established at line item accounts within each fund. Line item accounts are defined as the lowest (most specific) level of detail as established pursuant to the minimum chart of accounts referenced in N.J.A.C. 6:20-2A.2(m)1. Transfers of appropriations may be made by Charter School Board resolution at any time during the fiscal year subject to the limitation of P.L. 2004 c73 (S1701). The Board of Trustees did not make any material supplemental budgetary appropriations during the fiscal year.

Formal budgetary integration into the accounting system is employed as a management control device during the year. For governmental funds, there are no substantial differences between the budgetary basis of accounting and generally accepted accounting principles, with the exception of the Special Revenue Fund as noted below.

JERSEY CITY COMMUNITY CHARTER SCHOOL
(County of Hudson)
Notes to the Basic Financial Statements
Year Ended June 30, 2024

2 Summary of Significant Accounting Policies - *continued*

Encumbrance accounting is also employed as an extension of formal budgetary integration in the governmental funds types. Unencumbered appropriations lapse at fiscal year-end.

The accounting records of the special revenue fund are maintained on the grant accounting budgetary basis. The grant accounting budgetary basis differs from GAAP in that the grant accounting budgetary basis recognized encumbrances as expenditures and also recognized the related revenues, whereas the GAAP basis does not. Sufficient supplemental records are maintained to allow of the presentation of GAAP basis financial reports.

E Cash, Cash Equivalent and Investments

Cash and cash equivalents include petty cash, change funds, cash in banks and all highly liquid investment with a maturity of three months or less at the time of purchases and are stated at cost plus accrued interest. US Treasury and agency obligations and certificates of deposit with maturities of one year or less when purchases are stated at cost. All other investments are stated at fair value.

New Jersey Charter Schools are limited as to the types of the investments and types of financial institution they may invest in. New Jersey statute 18A:20-37 provides a list of permissible investment that may be purchased by New Jersey Charter Schools.

Additionally, the Charter School has adopted a cash management plan that requires it to deposit public fund in public depositories protected from loss under the provisions of the Governmental Unit Deposit Protection Act (“GUDPA”). GUDPA was enacted in 1970 to protect Governmental Units from loss funds on deposit with a failed banking institution in New Jersey.

N.J.S.A. 17:9-41 et. seq. established the requirements for the security of deposits of governmental units. The statute requires that no governmental unit shall deposit public funds in a public depository unless such funds are secured in accordance with the Act. Public depositories include Savings and Loan Institutions, bank (both state and national banks) and saving bank the deposits of which are federally insured. All public depositories must pledge collateral, having a market value at least equal to five percent of the average daily balance of collected public funds, to secure the deposit of Governmental Units. If a public depository fails, the collateral it has pledged, plus the collateral of all other public depositories, is available to pay the full amount of their deposits to the Governmental Units.

JERSEY CITY COMMUNITY CHARTER SCHOOL
(County of Hudson)
Notes to the Basic Financial Statements
Year Ended June 30, 2024

2 Summary of Significant Accounting Policies - *continued*

F Short-Term Interfund Receivables/Payables

On the fund financial statement, receivable and payables resulting from short-term (due within one year) interfund loans are classified as interfund receivables/payables. Interfund balances within governmental activities and within business-type activities are eliminated on the Government Wide Statements of Net Position.

G Inventories and Prepaid Expenses

Inventories and prepaid expenses, which benefit future periods, other than those recorded in the enterprise fund are recorded as expenditure during the year of purchase. Inventories in the proprietary funds are valued at cost, which approximates market, using the first-in-first-out (FIFO) method.

H Capital Assets

Capital assets, which include leasehold improvements, equipment, furniture & fixtures and vehicles are reported in the applicable governmental or business-type activities columns of the Government-wide financial statements. Capital assets are defined by the Charter School as assets with initial, individual cost of more than \$2,000 and an estimated useful life in excess of two years. Such assets are recorded at historical cost or through estimation procedures performed by an independent appraisal company.

The cost of normal repairs and maintenance that do not add to the value of the asset or materially extend the assets lives are not capitalized. Donated capital assets are capitalized at estimated fair market value on the date donated. Depreciation of capital assets is computed and recorded by the straight-line method.

<u>Description of Capital Assets</u>	<u>Estimated Lives (Years)</u>
Building improvements	15
Buildings	15
Furniture and equipment	3-5

JERSEY CITY COMMUNITY CHARTER SCHOOL
(County of Hudson)
Notes to the Basic Financial Statements
Year Ended June 30, 2024

2 Summary of Significant Accounting Policies - *continued*

I Compensated Absences

The Charter School accounts for compensated absences (e.g., unused vacation, sick leave) as directed by Governmental Accounting Standards Board Statement No. 16 (GASB 16), "Accounting for Compensated Absences." Compensated absences are those absences for which employees will be paid, such as vacation, sick leave, and sabbatical leave. A liability for compensated absences that are attributable to services already rendered, and that are not contingent on specific events that are outside the control of the Charter School and its employees, is accrued as the employees earn the rights to the benefits. Compensated absences that relate to future services, or that are contingent on specific events that are outside the control of the Charter School and its employees, are accounted for in the period in which such service is rendered or in which such events take place. In governmental and similar trust funds, compensated absences that are expected to be liquidated with the expendable available financial resources are reported as expenditure and fund liability in the fund that will pay for the compensated absences. In proprietary and similar trust funds, compensated absences are required as an expense and liability of the fund that will pay for them.

As of June 30, 2024, a liability existed for compensated absences in the amount \$1,218,727.

J Accrued Liabilities and Long-Term Obligations

All payables, accrued liabilities, and long-term obligations are reported on the government-wide financial statements.

In general, governmental fund payables and accrued liabilities that, once incurred, are paid in a timely manner and in full from current financial resources are reported as obligations of the funds. However, the non-current portion of compensated absences and mortgage payable (if any) that will be paid from governmental funds are reported as liabilities on the fund financial statements only to the extent that they are normally expected to be paid with expendable, available financial resources.

K Deferred Revenue

Deferred revenue in special revenue fund represent cash that has been received but not yet earned.

JERSEY CITY COMMUNITY CHARTER SCHOOL
(County of Hudson)
Notes to the Basic Financial Statements
Year Ended June 30, 2024

2 Summary of Significant Accounting Policies - *continued*

L Fund Balance and Equity

In February 2009, the GASB issued GASB Statement No. 54, Fund Balance Reporting and Governmental Fund Type Definitions (“GASB 54”). GASB 54 is effective for periods beginning after June 15, 2010 and establishes fund balance classifications that comprise a hierarchy based primarily on the extent to which government is bound to observe constraints imposed upon the use of resources reported in governmental funds. Under GASB 54, fund balances in the governmental funds financial statements are reported under the modified accrual basis of accounting and classified into the following five categories, as defined below:

1. Non-spendable – includes amounts that cannot be spent because they either (a) not in spendable form or (b) legally or contractually required to be maintained intact. Assets included in this fund balance category include prepaid assets, inventories, long-term receivables, and corpus of any permanent funds.
2. Restricted – includes amounts that can be spent only for the specific purposes stipulated by constitution, external resource providers, or through enabling legislation.
3. Committed – includes amounts that can be used only for the specific purposes determined by a formal action of the government’s highest level of decision-making authority.
4. Assigned – amounts intended to be used by the government for specific purposes but do not meet the criteria to be classified as restricted or committed.
5. Unassigned – includes all spendable amounts not contained in the other classifications.

When both restricted and unrestricted resources are available for use, it is the Charter School’s policy to use restricted resources first, then unrestricted resources as they are needed. For the unrestricted fund balance, the Charter School first spends committed funds, then assigned funds, and finally, unassigned funds.

M Net Position

Net Position represent the difference between assets and liabilities in the Government-wide financial statements. Net position invested in capital assets, net of related debt consists of capital assets, net of accumulated depreciation, reduced by the outstanding balance of any long-term debt used to build or acquire the capital assets. Net position are reported as restricted in the Government-wide financial statements when there are limitations imposed on their use through external restrictions imposed by creditors, grantors, or laws or regulations of other governments.

JERSEY CITY COMMUNITY CHARTER SCHOOL
(County of Hudson)
Notes to the Basic Financial Statements
Year Ended June 30, 2024

2 Summary of Significant Accounting Policies - *continued*

N Management Estimates

The preparation of financial statements in conformity with generally accepted accounting principles requires management to make estimates that affect the recorded amount of assets and liabilities and disclosure of contingent assets and liabilities at the date of the financial statements and the reported amounts of revenues and expenditures during the reporting period. Actual results could differ from those estimates.

O On-Behalf Payments

Revenues and expenditures of the General Fund include payment made by the state of New Jersey for Pension and social security contributions for certified teacher members of the New Jersey Teachers' Pension and Annuity Fund. The amounts are not required to be included in the Charter School's annual budget.

P GASB Pronouncements

Adoption of New Accounting Standards

During the previous fiscal year ended June 30, 2021, the Charter School adopted **GASB Statement No. 84, *Fiduciary Activities (GASB 84)***. GASB 84 enhances the identification of fiduciary activities for accounting and financial reporting purposes and how those activities should be reported. Specifically, GASB 84 establishes criteria for identifying fiduciary activities of all state and local governments. The focus of the criteria generally is on (1) whether a government is controlling the assets of the fiduciary activity and (2) the beneficiaries with whom a fiduciary relationship exists. As part of the adoption, the Charter School no longer considers activities in the Unemployment Fund Account, Payroll Agency Fund and Student Activities as fiduciary activities applicable under GASB 84. As a result, the Charter School no longer presents a Statement of Fiduciary Net Position, and records payroll deductions and withholding payable, unemployment activities in the General Fund in the Governmental Fund financial statements.

During the prior fiscal year ended June 30, 2023, the Charter School adopted the **GASB issued Statement No. 87, *Leases***. This Statement establishes standards of accounting and financial reporting for leases by lessees and lessors.

JERSEY CITY COMMUNITY CHARTER SCHOOL
(County of Hudson)
Notes to the Basic Financial Statements
Year Ended June 30, 2024

2 Summary of Significant Accounting Policies - *continued*

Q Fair Value of Financial Instruments

The Charter School follows the accounting and disclosure standards pertaining to GASB 72, Fair Value Measurement and Application, for qualifying assets and liabilities. Fair value is defined as the price that the Charter School would receive upon selling an asset or pay to settle a liability in an orderly transaction between market participants at the measurement date.

The Charter School uses a framework for measuring fair value that included a hierarchy that categorizes and prioritizes the sources used to measure and disclose fair value. This hierarchy is broken down into three levels based on inputs that market participants would use in valuing the financial instruments based on market data obtained from sources independent of the Charter School. Inputs refer broadly to the assumptions that market participants would use in pricing the financial instruments, including assumptions about risk. Inputs may be observable or unobservable. Observable inputs are inputs that are developed using market data, such as publicly available information about actual events or transactions, and which reflect the assumptions that market participants would use when pricing an asset or liability. Unobservable inputs are inputs for which market data are not available and that is developed using the best information available about the assumptions that market participants would use when pricing an asset or liability.

The three-tier hierarchy of inputs is summarized in the three broad levels as follows:

Level 1 – inputs that reflect unadjusted quoted prices in active markets for identical assets at the measurement date.

Level 2 – inputs other than quoted prices that are observable for the asset either directly or indirectly, including inputs in markets that are not considered to be active.

Level 3 – inputs that are unobservable and which require significant judgement or estimation.

An asset or liability level within the framework is based upon the lowest level of any input that is significant to the fair value measurement.

JERSEY CITY COMMUNITY CHARTER SCHOOL
(County of Hudson)
Notes to the Basic Financial Statements
Year Ended June 30, 2024

3 Deposits and Investments

New Jersey statutes require that Charter Schools deposit public funds in public depositories located in New Jersey that are insured by the Federal Deposit Insurance Corporation, the Federal Savings and Loan Insurance Corporation, or by any other agency of the United States that insures deposits made in public depositories. Charter schools are also permitted to deposit public funds in the State of New Jersey Cash Management Fund (NJCMF), the New Jersey Arbitrage Rebate Management Fund (NJARM) and the M.B.I.A Class.

New Jersey statutes require public depositories to maintain collateral for deposits of public funds that exceed depository insurance limits as follows: The market value of the collateral must equal at least 5% of the average daily balance of collected funds on deposit.

In addition to the above collateral requirement, if the public funds deposited exceed 75% of the capital funds of the depository, the depository must provide collateral having a market value at least equal to 100% of the amount exceeding 75%. All collateral must be deposited with the Federal Reserve Bank of New York, the Federal Reserve Bank of Philadelphia, the Federal Home Loan Bank of New York, or a banking institution that is a member of the Federal Reserve System and has capital funds of not less than \$25,000,000.

The Charter School's cash and cash equivalents are classified below to inform financial statement users about the extent to which the Charter School's deposits and investments are exposed to custodial credit risk. As of June 30, 2024, the Charter School's carrying amount of deposits and investments are as follows:

	General Fund	Special Revenue	Debt Service	Enterprise Funds	Agency Funds	Total
Operating A/C	\$ 14,700,740	\$ 1,377,891	\$ -	\$ 2,478,525	\$ -	\$ 18,557,156
Restricted	574,328	-	739,519	-	-	1,313,847
Total	<u>\$ 15,275,068</u>	<u>\$ 1,377,891</u>	<u>\$ 739,519</u>	<u>\$ 2,478,525</u>	<u>\$ -</u>	<u>\$ 19,871,003</u>

Operating cash accounts are held in the Charter School's name by two banking institutions. At June 30, 2024, the Charter School's carrying amount of deposits was \$19,871,003 and the bank balance was \$20,284,533. Of the bank balance, up to a maximum of \$500,000 of the Charter School's cash deposits on June 30, 2024 were secured by federal deposit insurance and \$19,784,533 was covered by a collateral pool maintained by the bank as required by New Jersey statutes in accordance with the New Jersey Governmental Unit Deposit Protection Act ("GUDPA").

JERSEY CITY COMMUNITY CHARTER SCHOOL
(County of Hudson)
Notes to the Basic Financial Statements
Year Ended June 30, 2024

3 Deposits and Investments - *continued*

Establishment of an Escrow Account

The Charter School has established and funded a portion of an Escrow Account pursuant to an agreement signed with the New Jersey Department of Education. The required maximum is \$75,000. The Charter School has fully funded the \$75,000. The agreement stipulates that the intended use of the escrow amount is “to pay for legal and audit expenses and any other outstanding pension benefits that would be associated with a dissolution should it occur.”

GASB Statement No. 40 requires that the Charter School disclose whether its deposits are exposed to custodial risk (risk that in the event of failure of the counterparty, the Charter School would not be able to recover the value of its deposit or investment). In general deposits are considered to be exposed to custodial risk by three categories described below:

Category 1 - Insured or collateralized with securities held by the Charter School or by its agent in the Charter School’s name. **Category 2** - Collateralized with securities held by the pledging public depository’s trust department or agent in the Charter School’s name. **Category 3** - Uncollateralized, including any deposits that are collateralized with securities held by the pledging public depository, or by its trust department or agent, but not in the Charter School’s name.

The Charter School does not have a policy for the management of the custodial risk, other than depositing all of its funds in banks covered by GUDPA.

Investments

New Jersey statutes permit the Charter School to purchase the following types of securities:

1. Bonds or other obligations of the United States or obligations guaranteed by the United States.
2. Bonds of any Federal Intermediate Credit Bank, Federal Home Loan Bank, Federal national Mortgage Agency or of any United States Bank for Cooperatives which have a maturity date not greater than twelve months from the date of purchase.
3. Bonds or other obligations of the Charter School.
4. New Jersey Cash Management Fund, New Jersey Arbitrage Rebate Management Fund and MBIA CLASS.

As of June 30, 2024, the Charter School did not hold any investments.

JERSEY CITY COMMUNITY CHARTER SCHOOL
(County of Hudson)
Notes to the Basic Financial Statements
Year Ended June 30, 2024

4 Capital Assets

The following schedule is a summarization of the governmental activities changes in capital assets for the year ended June 30, 2024:

	Beginning Balance	Net Additions (Deletions)	Ending Balance
Governmental activities			
Capital assets not depreciated:			
Land	\$ 861,909	\$ -	\$ 861,909
 Capital assets, being depreciated:			
Buildings	11,159,270	-	11,159,270
Buildings improvements	403,237	194,736	597,973
Machinery and equipment	759,340	-	759,340
Furniture	20,609	-	20,609
	<u>12,342,456</u>	<u>194,736</u>	<u>12,537,192</u>
 Less accumulated depreciation			
Buildings	10,740,736	209,267	10,950,003
Buildings improvements	398,001	44,183	442,184
Machinery and equipment	759,340	-	759,340
Furniture	20,609	-	20,609
	<u>11,918,686</u>	<u>253,450</u>	<u>12,172,136</u>
 Total capital assets net	<u>\$ 1,285,679</u>	<u>\$ (58,714)</u>	<u>\$ 1,226,965</u>

Depreciation expense of \$253,450 was charged to an unallocated function.

Right-of-Use Lease Assets

During the prior year ended June 30, 2023, the Charter School adopted GASB 87 for Leases. However, the Charter School's leases did not meet the requirement of GASB 87 for the year ended June 30, 2024, therefore no information is available for reporting for the year then ended. When new lease agreements are executed in the future years, evaluations would be made to determine if GASB 87 requirements are met for reporting purposes.

JERSEY CITY COMMUNITY CHARTER SCHOOL
(County of Hudson)
Notes to the Basic Financial Statements
Year Ended June 30, 2024

5 Lease Obligations

Equipment Leases

The Charter School leases office equipment (computers and copiers) under several operating lease agreements. For the year ended June 30, 2024, the Charter School incurred \$56,009 in equipment lease expenditures.

Year ending June 30:	Equipment Leases
<u>2024</u>	<u>\$ -</u>
2025 to 2028	-
Thereafter	-
	<u>\$ -</u>

JERSEY CITY COMMUNITY CHARTER SCHOOL
(County of Hudson)
Notes to the Basic Financial Statements
Year Ended June 30, 2024

6 Pension Plans

Description of Plans

Substantially all of the employees of the Charter School are covered by either the Public Employee's Retirement System or the Teacher's Pension and Annuity Fund (both of which are contributory defined benefits plans). Both were established by state statute and are administered by the New Jersey Division of Pension and Benefit (Division). According to the State of New Jersey Administrative Code, all obligations of both Systems will be assumed by the State of New Jersey should the Systems terminate.

The State of New Jersey, Department of the Treasury, Division of Pensions and Benefits, issues publicly available financial reports that include the financial statements and required supplementary information for TPAF and PERS. The financial reports may be obtained by writing to the State of New Jersey, Department of the Treasury, Division of Pensions and Benefits, P.O. Box 295, Trenton, New Jersey 08625-0295.

Teachers' Pension and Annuity Fund (TPAF)

The Teachers' Pension and Annuity Fund was established in January 1955 under the provisions of N.J.S.A. 18A:66 to provide coverage including post-retirement health care to substantially all full time public school employees in the State. Membership is mandatory for such employees and vesting occurs after 10 years of service for pension benefits and 25 years for health care coverage. Age eligibility and benefit provisions were affected by Chapters 92 and 103, P.L. 2007, Chapter 89, P.L. 2008, Chapter 1, P.L. 2010, and Chapter 78, P.L. 2011. Members are classified into one of five tiers dependent upon the date of their enrollment. Tier 1, 2 and 3 members are eligible to retire at age 60, 60, and 62, respectively, with an annual benefit generally determined to be 1/55th of the average annual compensation for the highest three fiscal years' compensation for each year of membership during years of credited service. Tier 4 and 5 members are eligible to retire at age 62 and 65, respectively, with an annual benefit generally determined to be 1/60th of the average annual compensation for the highest five fiscal years' compensation for each year of membership during years of credited service. Anyone who retires early and is under their respective tier's retirement age receives retirement benefits as calculated in the formulas mentioned above, but at a reduced rate in accordance with applicable New Jersey Statute based upon their tier.

JERSEY CITY COMMUNITY CHARTER SCHOOL
(County of Hudson)
Notes to the Basic Financial Statements
Year Ended June 30, 2024

6 Pension Plans - *continued*

Public Employees' Retirement System (PERS)

The Public Employees' Retirement System was established in January 1955 under the provisions of N.J.S.A. 43:15A to provide coverage including post-retirement health care to substantially all full-time employees of the State or any county, municipality, school Board or public agency provided the employee is not a member of another State-administered retirement system. Age eligibility and benefit provisions were affected by Chapters 92 and 103, P.L. 2007, Chapter 89, P.L. 2008, Chapter 1, P.L. 2010, and Chapter 78, P.L. 2011. Members are classified into one of five tiers dependent upon the date of their enrollment. Tier 1, 2 and 3 members are eligible to retire at age 60, 60, and 62, respectively with an annual benefit generally determined to be 1/55th of the average annual compensation for the highest three fiscal years' compensation for each year of membership during years of credited service. Tier 4 and 5 members are eligible to retire at age 62 and 65, respectively with an annual benefit generally determined to be 1/60th of the average annual compensation for the highest five fiscal years' compensation for each year of membership during years of credited service. Anyone who retires early and is under their respective tier's retirement age receives retirement benefits as calculated in the formulas mentioned above, but at a reduced rate in accordance with applicable New Jersey Statute based upon their tier.

Defined Contribution Retirement Program (DCRP)

The Defined Contribution Retirement Program (DCRP) was established under the provision of Chapter 92, P.L. 2007 and Chapter 103, P.L. 2007 to provide coverage to elected and certain appointed officials, effective July 1, 2007. Membership is mandatory for such individuals with vesting occurring after one year of membership.

Funding Policy

The contribution policy is set by New Jersey State Statutes and contributions are required by active members and contributing members. Plan member and employer contributions may be amended by State of New Jersey legislation. Under the provisions of Chapter 78, P.L. 2011, employee contribution rates for TPAF and PERS increased to 7.5% of employees' annual compensation. Employers are required to contribute at an actuarially determined rate in both the TPAF and PERS. The actuarially determined contribution includes funding for noncontributory death benefits and post-retirement medical premiums. Under current statute the Board is a non-contributing employer of the TPAF.

JERSEY CITY COMMUNITY CHARTER SCHOOL
(County of Hudson)
Notes to the Basic Financial Statements
Year Ended June 30, 2024

6 Pension Plans - *continued*

Annual Pension Costs (APC)

Per the requirements of GASB Statement No. 27 for the year ended June 30, 2011 for TPAF, which is a cost sharing plan with special funding situations, annual pension cost differs from the annual required contribution. For PERS, which is a cost sharing multi-employer defined benefit pension plan, the annual pension cost equals contributions made. TPAF employer contributions are made annually by the State of New Jersey to the pension system on behalf of the Board.

PERS employer contributions are made annually by the Board to the pension system in accordance with Chapter 114, P.L. 1997. In the DCRP, which is a defined contribution plan, member contributions are matched by a 3% employer contribution.

The Charter School's contribution to PERS for the year ended June 30, 2024 was \$276,692.

In accordance with N.J.S.A 18A:66-66 the State of New Jersey reimbursed the Charter School \$185,156 during the year ended June 30, 2024 for the employer's share of social security contributions for TPAF members, as calculated on their base salaries. Also, the State paid \$1,195,692 into the TPAF pension representing on-behalf employer's portion of the TPAF Pension System Contributions, TPAF Post-Retirement Medical Benefits Contributions and TPAF Long Term Disability Insurance Premium Contributions for the Charter School. These amounts have been included in the school wide financial statements and the fund financial statements as a revenue and expenditure in accordance with GASB No. 24.

JERSEY CITY COMMUNITY CHARTER SCHOOL
(County of Hudson)
Notes to the Basic Financial Statements
Year Ended June 30, 2024

7 Pension Plans – GASB 68 Disclosures

Teachers' Pension and Annuity Fund (TPAF)

Summary of Significant Accounting Policies

For purposes of measuring the net pension liability, deferred outflows of resources and deferred inflows of resources related to pensions, and pension expense, information about the fiduciary net position of the Teachers' Pension and Annuity Fund (TPAF) and additions to/deductions from the TPAF's fiduciary net position have been determined on the same basis as they are reported by the TPAF.

For this purpose, benefit payments (including refunds of employee contributions) are recognized when due and payable in accordance with the benefit terms. Investments are reported at fair value.

Pension Liabilities, Pension Expense, and Deferred Outflows of Resources and Deferred Inflows of Resources Related to Pension

The employer contributions for the Charter School are legally required to be funded by the State in accordance with N.J.S.A 18:66-33. Therefore, the Charter School (employer) is considered to be in a special funding situation as defined by GASB Statement No. 68 and the State is treated as a non-employer contributing entity.

Pension Liabilities, Pension Expense, and Deferred Outflows of Resources and Deferred Inflows of Resources Related to Pension - continued

Since the Charter School (employer) does not contribute directly to the plan (except for employer specific financed amounts), there is no net pension liability or deferred outflows or inflows to report in the financial statements of the Charter School. However, the state's portion of the net pension liability that was associated with the Charter School was \$11,336,826 as measured on June 30, 2023.

For the year ended June 30, 2024, the Charter School recognized pension expense of \$278,513 and revenue of \$278,513 for support provided by the State. The measurement period for the pension expense and revenue reported in the Charter School's financial statements (A-2) at June 30, 2024 is based upon changes in the collective net pension liability with a measurement period of June 30, 2022 through June 30, 2023. Accordingly, the pension expense and the related revenue associated with the support provided by the State are based upon the changes in the collective net pension liability between July 1, 2022 and June 30, 2023.

JERSEY CITY COMMUNITY CHARTER SCHOOL
(County of Hudson)
Notes to the Basic Financial Statements
Year Ended June 30, 2024

7 Pension Plans – GASB 68 Disclosures - *continued*

Teachers' Pension and Annuity Fund (TPAF) - *continued*

Although the Charter School does not report net pension liability or deferred outflows or inflows related to the TPAF, the following schedule illustrates the collective net pension liability and deferred items and the State's portion of the net pension liability associated with the Charter School. The collective amounts are the total of all New Jersey local governments participating in the TPAF plan.

	June 30, 2023	June 30, 2022
Collective deferred outflows of resources	\$ 2,413,548,676	\$ 4,885,289,911
Collective deferred inflows of resources	\$14,741,373,312	\$19,563,805,393
Collective net pension liability (non-employer State of New Jersey)	\$51,032,669,551	\$51,594,415,806
State's portion of the net pension liability that was associated with the Charter School	\$ 11,336,826	\$ 10,587,339
State's portion of the net pension liability that was associated with the Charter School as a percentage of the collective net pension liability	0.022215%	0.020520%

Actuarial Assumptions

The total pension liability for the June 30, 2023 measurement date was determined by an actuarial valuation as of July 1, 2022, which was rolled forward to June 30, 2023. This actuarial valuation used the following actuarial assumptions, applied to all periods in the measurement:

Inflation rate - price	2.75%
Inflation rate - wage	3.25%
Salary increases: thereafter	2.75% - 4.25% based on years of service
Investment rate of return	7.00%

Pre-retirement mortality rates were based on the Pub-2010 Teachers Above-Median Income Employee mortality table with a 93.9% adjustment for males and 85.3% adjustment for females, and with future improvement from the base year of 2010 on a generational basis. Post-retirement mortality rates were based on the Pub-2010 Teachers Above-Median Income Healthy Retiree mortality table with a 114.7% adjustment for males and 99.6% adjustment for females, and with future improvement from the base year of 2010 on a generational basis.

JERSEY CITY COMMUNITY CHARTER SCHOOL
(County of Hudson)
Notes to the Basic Financial Statements
Year Ended June 30, 2024

7 Pension Plans – GASB 68 Disclosures - *continued*

Teachers' Pension and Annuity Fund (TPAF) - *continued*

Actuarial Assumptions - continued

Disability mortality rates were based on the Pub-2010 Non-Safety Disabled Retiree mortality table with a 106.3% adjustment for males and 100.3% adjustment for females, and with future improvement from the base year of 2010 on a generational basis. Mortality improvement is based on Scale MP-2021.

The actuarial assumptions used in the July 1, 2022 valuation were based on the results of an actuarial experience study for the period July 1, 2018 to June 30, 2021.

Long-Term Expected Rate of Return - continued

In accordance with State statute, the long-term expected rate of return on plan investments (7.00% at June 30, 2023) is determined by the State Treasurer, after consultation with the Directors of the Division of Investments and Division of Pensions and Benefits, the board of trustees and the actuaries. The long-term expected rate of return was determined using a building block method in which best-estimate ranges of expected future real rates of return (expected returns, net of pension plan investment expense and inflation) are developed for each major asset class.

These ranges are combined to produce the long-term expected rate of return by weighting the expected future real rates of return by the target asset allocation percentage and by adding expected inflation. Best estimates of arithmetic real rates of return for each major asset class included in TPAF's target asset allocation as of June 30, 2023 are summarized in the following table:

JERSEY CITY COMMUNITY CHARTER SCHOOL
(County of Hudson)
Notes to the Basic Financial Statements
Year Ended June 30, 2024

7 Pension Plans – GASB 68 Disclosures - *continued*

Teachers' Pension and Annuity Fund (TPAF) - *continued*

Long-Term Expected Rate of Return - continued

Asset Class	Target Allocation	Long Term Expected Real Rate of Return
US Equity	28.00%	8.98%
Non-US Developed Markets Equity	12.75%	9.22%
International Small Cap Equity	1.25%	9.22%
Emerging Markets Equity	5.50%	11.13%
Private Equity	13.00%	12.50%
Real Estate	8.00%	8.58%
Real Assets	3.00%	8.40%
High Yield	4.50%	6.97%
Private Credit	8.00%	9.20%
Investment Grade Credit	7.00%	5.19%
Cash Equivalents	2.00%	3.31%
U.S. Treasuries	4.00%	3.31%
Risk Mitigation Strategies	3.00%	6.21%

Discount Rate

The discount rate used to measure the State's total pension liability was 7.00% as of June 30, 2023. The projection of cash flows used to determine the discount rate assumed that contributions from plan members will be made at the current member contribution rates and that contributions from employers will be based on 100% of the actuarially determined contributions for the State. Based on those assumptions, the plan's fiduciary net position was projected to be available to make projected future benefit payments of current plan members. Therefore, the long-term expected rate of return on plan investments was applied to projected benefit payments in determining the total pension liability.

JERSEY CITY COMMUNITY CHARTER SCHOOL
(County of Hudson)
Notes to the Basic Financial Statements
Year Ended June 30, 2024

7 Pension Plans – GASB 68 Disclosures - *continued*

Teachers' Pension and Annuity Fund (TPAF) - *continued*

Sensitivity of the Charter School's Proportionate Share of the Net Pension Liability to Changes in the Discount Rate

Since the Charter School's has no proportionate share of the net pension liability because of the special funding situation, the Charter School would not be sensitive to any changes in the discount rate. Detailed information about the pension plan's sensitivity of the collective net pension liability to changes in the discount rate is available in the separately issued State of New Jersey Divisions of Pensions and Benefits financial report at: <https://www.nj.gov/treasury/pensions/documents/financial/gasb/gasb68-tpaf23.pdf>

Pension Plan Fiduciary Net Position

Detailed information about the pension plan's fiduciary net position is available in the separately issued State of New Jersey Divisions of Pensions and Benefits financial report at: <https://www.nj.gov/treasury/pensions/gasb-notices.shtml>

JERSEY CITY COMMUNITY CHARTER SCHOOL
(County of Hudson)
Notes to the Basic Financial Statements
Year Ended June 30, 2024

7 Pension Plans – GASB 68 Disclosures - *continued*

Public Employees' Retirement System (PERS)

Summary of Significant Accounting Policies

For purposes of measuring the net pension liability, deferred outflows of resources and deferred inflows of resources related to pensions, and pension expense, information about the fiduciary net position of the PERS and additions to/deductions from PERS fiduciary net position have been determined on the same basis as they are reported by PERS. For this purpose, benefit payments (including refunds of employee contributions) are recognized when due and payable in accordance with the benefit terms. Investments are reported at fair value.

Pension Liabilities, Pension Expense, and Deferred Outflows of Resources and Deferred Inflows of Resources Related to Pension

At June 30, 2024, the Charter School reported a liability of \$2,998,600 for its proportionate share of the net pension liability. The net pension liability was measured as of June 30, 2023, and the total pension liability to calculate the net pension liability was determined by an actuarial valuation as of July 1, 2022, which was rolled forward to June 30, 2023. The total pension liability for the June 30, 2022 measurement date was determined by an actuarial valuation as of July 1, 2022. The Charter School's proportion of the net pension liability is based on the ratio of the contributions as an individual employer to total contributions to the PERS during the years ended June 30, 2023 and 2022. At June 30, 2023, the Charter School's proportion was 0.0207023088% which was an increase of 0.0032102707% from its proportion measured as of June 30, 2022 which was 0.0174920381%.

For the year ended June 30, 2024, the Charter School recognized pension expense of \$276,692. At June 30, 2024, the Charter School reported deferred outflows of resources and deferred inflows of resources related to PERS from the following sources:

JERSEY CITY COMMUNITY CHARTER SCHOOL
(County of Hudson)
Notes to the Basic Financial Statements
Year Ended June 30, 2024

7 Pension Plans – GASB 68 Disclosures - continued

Public Employees' Retirement System (PERS) - continued

Pension Liabilities, Pension Expense, and Deferred Outflows of Resources and Deferred Inflows of Resources Related to Pension - continued

	Deferred Outflows of Resources	Deferred Inflows of Resources
Differences between expected and actual experience	\$ 28,670	\$ 12,257
Changes in assumptions	6,587	181,728
Net difference between projected and actual earnings on pension plan investments	13,809	-
Changes in proportion and differences between Charter School's contributions and proportionate share of contributions	765,546	87,347
Subtotal	814,612	281,332
Charter School's contributions subsequent to the measurement date	276,692	-
Total	\$ 1,091,304	\$ 281,332

\$276,692 reported as deferred outflows of resources related to pensions resulting from Charter School contributions subsequent to the measurement date (i.e. for the school year ending June 30, 2024, the plan measurement date is June 30, 2023) will be recognized as a reduction of the net pension liability measured as of June 30, 2024. Other amounts reported as deferred outflows of resources and deferred inflows of resources related to pensions will be recognized in pension expense as follows:

Year Ending June 30:	Pension Expense
2024	\$ 582,576
2025	325,172
2026	(454,406)
2027	81,321
2028	(1,383)
Thereafter	-
	\$ 533,280

JERSEY CITY COMMUNITY CHARTER SCHOOL
(County of Hudson)
Notes to the Basic Financial Statements
Year Ended June 30, 2024

7 Pension Plans – GASB 68 Disclosures - *continued*

Public Employees' Retirement System (PERS) - *continued*

Pension Liabilities, Pension Expense, and Deferred Outflows of Resources and Deferred Inflows of Resources Related to Pension – continued

	June 30, 2023	June 30, 2022
Collective deferred outflows of resources	\$ 1,101,221,923	\$ 1,715,543,211
Collective deferred inflows of resources	\$ 1,648,476,259	\$ 4,112,583,758
Collective net pension liability (Non-State Local Group)	\$ 14,484,374,047	\$ 15,091,376,611
Charter School's portion of the net pension liability	\$ 2,998,600	\$ 2,639,789
Charter School's proportion (percentage)	0.02070231%	0.01749204%

Actuarial Assumptions

The collective total pension liability for the June 30, 2023 measurement date was determined by an actuarial valuation as of July 1, 2022, which was rolled forward to June 30, 2023. This actuarial valuation used the following actuarial assumptions:

Inflation rate - price	2.75%
Inflation rate - wage	3.25%
Salary increases: thereafter	2.75%-6.55% based on years of service
Investment rate of return	7.00%

Pre-retirement mortality rates were based on the Pub-2010 General Below-Median Income Employee mortality table with an 82.2% adjustment for males and 101.4% adjustment for females, and with future improvement from the base year of 2010 on a generational basis. Post-retirement mortality rates were based on the Pub-2010 General Below-Median Income Healthy Retiree mortality table with a 91.4% adjustment for males and 99.7% adjustment for females, and with future improvement from the base year of 2010 on a generational basis. Disability retirement rates used to value disabled retirees were based on the Pub-2010 Non-Safety Disabled Retiree mortality table with a 127.7% adjustment for males and 117.2% adjustment for females, and with future improvement from the base year of 2010 on a generational basis. Mortality improvement is based on Scale MP-2021.

The actuarial assumptions used in the July 1, 2022 valuation were based on the results of an actuarial experience study for the period July 1, 2018 to June 30, 2021.

JERSEY CITY COMMUNITY CHARTER SCHOOL
(County of Hudson)
Notes to the Basic Financial Statements
Year Ended June 30, 2024

7 Pension Plans – GASB 68 Disclosures - *continued*

Public Employees' Retirement System (PERS) - *continued*

Long-Term Expected Rate of Return

In accordance with State statute, the long-term expected rate of return on plan investments (7.00% at June 30, 2023) is determined by the State Treasurer, after consultation with the Directors of the Division of Investment and Division of Pensions and Benefits, the board of trustees and the actuaries. The long-term expected rate of return was determined using a building block method in which best-estimate ranges of expected future real rates of return (expected returns, net of pension plan investment expense and inflation) are developed for each major asset class. These ranges are combined to produce the long-term expected rate of return by weighting the expected future real rates of return by the target asset allocation percentage and by adding expected inflation. Best estimates of arithmetic rates of return for each major asset class included in PERS's target asset allocation as of June 30, 2023 are summarized in the following table:

Asset Class	Target Allocation	Long Term Expected Real Rate of Return
US Equity	28.00%	8.98%
Non-US Developed Markets Equity	12.75%	9.22%
International Small Cap Equity	1.25%	9.22%
Emerging Markets Equity	5.50%	11.13%
Private Equity	13.00%	12.50%
Real Estate	8.00%	8.58%
Real Assets	3.00%	8.40%
High Yield	4.50%	6.97%
Private Credit	8.00%	9.20%
Investment Grade Credit	7.00%	5.19%
Cash Equivalents	2.00%	3.31%
U.S. Treasuries	4.00%	3.31%
Risk Mitigation Strategies	3.00%	6.21%

JERSEY CITY COMMUNITY CHARTER SCHOOL
(County of Hudson)
Notes to the Basic Financial Statements
Year Ended June 30, 2024

7 Pension Plans – GASB 68 Disclosures - *continued*

Public Employees' Retirement System (PERS) – *continued*

Discount Rate

The discount rate used to measure the total pension liability was 7.00% as of June 30, 2023. The projection of cash flows used to determine the discount rate assumed that contributions from plan members will be made at the current member contribution rates and that contributions from employers will be based on 100% of the actuarially determined contributions for the State employer and 100% of actuarially determined contributions for the local employers. Based on those assumptions, the plan's fiduciary net position was projected to be available to make projected future benefit payments of current plan members. Therefore, the long-term expected rate of return on plan investments was applied to projected benefit payments to determine the total pension liability.

JERSEY CITY COMMUNITY CHARTER SCHOOL
(County of Hudson)
Notes to the Basic Financial Statements
Year Ended June 30, 2024

7 Pension Plans – GASB 68 Disclosures - *continued*

Public Employees' Retirement System (PERS) - *continued*

Sensitivity of the Charter School's Proportionate Share of the Net Pension Liability to Changes in the Discount Rate

The following presents the collective net pension liability of the participating employers as of June 30, 2023, calculated using the discount rate as disclosed above as well as what the collective net pension liability would be if it was calculated using a discount rate that is 1-percentage point lower or 1-percentage-point higher than the current rate:

2023			
	1% Decrease (6.00%)	Current Discount Rate (7.00%)	1% Increase (8.00%)
Charter School's proportionate share of the pension liability	<u>\$ 3,936,449</u>	<u>\$ 2,998,600</u>	<u>\$ 2,247,164</u>
2022			
	1% Decrease (6.00%)	Current Discount Rate (7.00%)	1% Increase (8.00%)
Charter School's proportionate share of the pension liability	<u>\$ 3,420,077</u>	<u>\$ 2,639,789</u>	<u>\$ 2,017,115</u>

Pension Plan Fiduciary Net Position

Detailed information about the pension plan's fiduciary net position is available in the separately issued State of New Jersey Divisions of Pensions and Benefits financial report at: <http://www.nj.gov/treasury/pensions/financial-rprts-home.shtml>

JERSEY CITY COMMUNITY CHARTER SCHOOL
(County of Hudson)
Notes to the Basic Financial Statements
Year Ended June 30, 2024

8 Post Retirement Benefits

Plan Description and Benefits Provided

The Charter School is in a "special funding situation", as described in GASB Statement No. 75, in that OPEB contributions and expenses are legally required to be made by and are the sole responsibility of the State of New Jersey, not the Charter School.

The State of New Jersey reports a liability as a result of its statutory requirements to pay other post-employment (health) benefits for the State Health Benefit Local Education Retired Education Plan. The State Health Benefit Local Education Retired Employees Plan is a multiple-employer defined benefit OPEB plan that is administered on a pay-as-you-go basis. Accordingly, no assets are accumulated in a qualifying trust that meets the criteria in paragraph 4 of GASB Statement 75, *Accounting and Financial Reporting for Postemployment Benefits Other Than Pensions*. The State Health Benefits Local Education Retired Employees Plan provides medical, prescription drug, and Medicare Part B reimbursement to retirees and their covered dependents of local education employers.

The employer contributions for the participating local education employers are legally required to be funded by the State of New Jersey in accordance with N.J.S.A. 52:14-17.32f. According to N.J.S.A. 52: 14-17.32f, the State provides employer-paid coverage to employees who retire from a board of education or county college with 25 years or more of service credit in, or retires on a disability pension from, one or more of the following plans: the Teachers' Pension and Annuity Fund (TPAF), the Public Employees' Retirement System (PERS), the Police and Firemen Retirement System (PFRS), or the Alternate Benefit Program (ABP). Pursuant to Chapter 78, P.L. 2011, future retirees eligible for postretirement medical coverage who have less than 20 years of creditable service on June 28, 2011 will be required to pay a percentage of the cost of their health care coverage in retirement provided they retire with 25 years or more of pension service credit. The percentage of the premium for which the retiree will be responsible will be determined based on the retiree's annual retirement benefit and level of coverage.

The total non-employer OPEB liability does not include certain other postemployment benefit obligations that are provided by the local education employers. The reporting of these benefits, if any, is the responsibility of the individual education employers.

Employees Covered by Benefit Terms.

At June 30, 2023, the following employees were covered by the benefit terms:

Active plan member = 217,212

Inactive plan members entitled to but not yet receiving benefits = 152,383

Inactive plan members or beneficiaries currently receiving benefits = -0-

Total plan members = 369,595

JERSEY CITY COMMUNITY CHARTER SCHOOL
(County of Hudson)
Notes to the Basic Financial Statements
Year Ended June 30, 2024

8 Post Retirement Benefits – *continued*

Total Non-employer OPEB Liability

The State, a non-employer contributing entity, is the only entity that has a legal obligation to make employer contributions to OPEB for qualified retired PERS and TPAF participants. The Charter School's proportionate share percentage determined under paragraphs 193 and 203 through 205 of GASBS No. 75 is zero percent. Accordingly, the Charter School did not recognize any portion of the collective net OPEB liability on the Statement of Net Position. Accordingly, the following OPEB liability note information is reported at the State's level and is not specific to the board of education/board of trustees. Note that actual numbers will be published in the NJ State's ACFR (<https://www.nj.gov/treasury/omb/publications/archives.shtml>)

The total nonemployer OPEB liability as of June 30, 2023 was determined by an actuarial valuation as of June 30, 2022, which was rolled forward to June 30, 2023. The total nonemployer OPEB liability as of June 30, 2022 was determined by an actuarial valuation as of June 30, 2022.

Actuarial Assumptions and Other Inputs

The actuarial assumptions vary for each plan member depending on the pension plan the member is enrolled in. This actuarial valuation used the following actuarial assumptions, applied to all periods in the measurement.

Inflation Rate	2.50%	
	<u>TPAF/ABP</u>	<u>PERS</u>
Salary increases:		
Through 2029	2.75 to 5.65% based on years of service	2.75 to 6.55% based on years of service
Thereafter	2.75 to 5.65% based on years of service	2.75 to 6.55% based on years of service

JERSEY CITY COMMUNITY CHARTER SCHOOL
(County of Hudson)
Notes to the Basic Financial Statements
Year Ended June 30, 2024

8 Post Retirement Benefits – *continued*

Actuarial Assumptions and Other Inputs - *continued*

Preretirement mortality rates were based on the Pub-2010 Healthy “Teachers” (TPAF/ABP) and “General” (PERS) classification headcount-weighted mortality table with fully generational mortality improvement projections from the central year using Scale MP-2023. Postretirement mortality rates were based on the Pub-2010 “General” classification headcount-weighted mortality table with fully generational mortality improvement projections from the central year using Scale MP-2023. Disability mortality was based on the Pub-2010 “General” classification headcount-weighted disabled mortality table with fully generational mortality improvement projections from the central year using Scale MP-2023.

The actuarial assumptions used in the June 30, 2022 valuation were based on the results of actuarial experience studies for the periods July 1, 2015 - June 30, 2018, and July 1, 2014 - June 30, 2018 for TPAF and PERS, respectively.

100% of all retirees who currently have healthcare coverage are assumed to continue with that coverage. 100% of active members are considered to participate in the Plan upon retirement, having a coverage blend of 85% and 15% in PPO and HMO, respectively.

Health Care Trend Assumptions

For pre-Medicare medical benefits, the trend rate is initially 5.65% and decreases to a 4.50% long-term trend rate after seven years. For post-65 medical benefits, the actual fully-insured Medicare Advantage trend rates for fiscal year 2024 through 2024 are reflected. For PPO the trend is initially 5.74% in fiscal year 2025, increasing to 12.93% in fiscal year 2025 and decreases to 4.50% after 11 years. For HMO the trend is initially 6.01 % in fiscal year 2025, increasing to 15 .23% in fiscal year 2025 and decreases to 4.5% after 11 years. For prescription drug benefits, the initial trend rate is 6.75% and decreases to a 4.50% long-term trend rate after seven years. For the Medicare Part B reimbursement, the trend rate is 5.00%

Discount Rate

The discount rate for June 30, 2023 was 2.16%. This represents the municipal bond return rate as chosen by the Division. The source is the Bond Buyer Go 20-Bond Municipal Bond Index, which includes tax-exempt general obligation municipal bonds with an average rating of AA/Aa or higher. As the long-term rate of return is less than the municipal bond rate, it is not considered in the calculation of the discount rate, rather the discount rate is set at the municipal bond rate.

JERSEY CITY COMMUNITY CHARTER SCHOOL
(County of Hudson)
Notes to the Basic Financial Statements
Year Ended June 30, 2024

8 Post Retirement Benefits – continued

Changes in the Total OPEB Liability Reported by the State of New Jersey

	Increase/(Decrease) Total OPEB Liability
Balance as of June 30, 2022 measurement date	\$ 50,646,462,966
Changes recognized for the fiscal year:	
Service cost	\$ 2,136,235,476
Interest on total OPEB liability	1,844,113,951
Changes of benefit terms	-
Difference between expected and actual experiences	(980,424,863)
Effect of changes of assumptions	105,539,463
Gross benefits paid by the State	(1,437,516,858)
Contributions from the members	47,258,104
Net changes	\$ 1,715,205,273
Balance as of June 30, 2023 measurement date	\$ 52,361,668,239

Sensitivity of Total Nonemployer OPEB Liability to Changes in the Discount Rate

The following presents the State's proportionate share of the OPEB liability attributable to the District calculated using the discount rate of 3.65%; as well as what the State's proportionate share of the OPEB liability attributable to the District that would be if it were calculated using a discount rate that is 1-percentage-point lower (2.65 percent) or 1-percentage-point higher (4.65 percent) than the current rate:

	2023		
	At 1% Decrease (2.65%)	At 1% Discount Rate (3.65%)	At 1% Increase (4.65%)
Total OPEB liability attributable to the Charter School	\$ 10,458,926	\$ 8,921,499	\$ 7,687,124
	2022		
	At 1% Decrease (2.54%)	At 1% Discount Rate (3.54%)	At 1% Increase (4.54%)
Total OPEB liability attributable to the Charter School	\$ 9,860,324	\$ 8,388,946	\$ 7,209,710

JERSEY CITY COMMUNITY CHARTER SCHOOL
(County of Hudson)
Notes to the Basic Financial Statements
Year Ended June 30, 2024

8 Post Retirement Benefits – continued

Sensitivity of Total Nonemployer OPEB Liability to Changes in the Healthcare Trend Rate

The following presents the total nonemployer OPEB Liability attributable to the Charter School as of June 30, 2023 and 2022, respectively, calculated using the healthcare trend rate as disclosed in this note, as well as what the total nonemployer OPEB liability attributable to the Charter School would be if it were calculated using a healthcare trend rate that is I-percentage-point lower or I-percentage-point higher than the current rate:

2023			
	<u>At 1% Decrease</u>	<u>Healthcare Cost Trend Rate</u>	<u>At 1% Increase</u>
Total OPEB liability attributable to the Charter School	\$ 7,406,220	\$ 8,921,499	\$ 10,904,246
2022			
	<u>At 1% Decrease</u>	<u>Healthcare Cost Trend Rate</u>	<u>At 1% Increase</u>
Total OPEB liability attributable to the Charter School	\$ 6,933,977	\$ 8,388,946	\$ 10,300,137

OPEB Expense and Deferred Outflows of Resources and Deferred Inflows of Resources Related to OPEB

For the fiscal year ended June 30, 2024 the Charter School recognized OPEB expense of \$765,109 as determined by the State of New Jersey Division of Pensions and Benefits. This expense and the related offsetting revenue are for benefits provided by the State through a defined benefit OPEB plan that meets the criteria in GASB Statement 75, in which there is a special funding situation.

In accordance with GASB Statement 75, as the Charter School's proportionate share of the OPEB liability is \$-0, there is no recognition of the allocation of the proportionate share of the deferred inflows and outflows of resources. At June 30, 2023 the State had deferred outflows of resources and deferred inflows of resources related to OPEB from the following sources:

JERSEY CITY COMMUNITY CHARTER SCHOOL
(County of Hudson)
Notes to the Basic Financial Statements
Year Ended June 30, 2024

8 Post Retirement Benefits – continued

OPEB Expense and Deferred Outflows of Resources and Deferred Inflows of Resources Related to OPEB - continued

	Deferred Outflows of Resources	Deferred Inflows of Resources
Differences between actual and expected experience	\$ 7,639,717,639	\$ 13,791,541,217
Net difference between expected and actual earnings on OPEB plan investments	-	-
Assumption changes	7,445,895,322	14,449,948,556
Subtotal	15,085,612,961	28,241,489,773
Contributions made in fiscal year ended June 30, 2024 after the measurement date	TBD	N/A
Total	\$ TBD	\$ 28,241,489,773

Amounts reported as deferred outflows of resources and deferred inflows of resources related to OPEB will be recognized in OPEB expense as follows:

Measurement Period - Fiscal Year Ending June 30:	Total
2024	\$ (2,611,225,301)
2025	\$ (2,611,225,301)
2026	\$ (2,269,523,460)
2027	\$ (1,338,024,839)
2028	\$ (273,877,609)
Thereafter	\$ (4,052,000,302)
	\$ (13,155,876,812)

9 Deferred Compensation

The Charter School offers its employees a deferred compensation plan created in accordance with the IRS code 403(b). The plan which is administered by AXA Equitable, Mass Mutual and First Investors permits participants to defer a portion of their salaries until future years.

JERSEY CITY COMMUNITY CHARTER SCHOOL
(County of Hudson)
Notes to the Basic Financial Statements
Year Ended June 30, 2024

10 Economic Dependency

The Charter School receives a substantial amount of its support from federal and state governments. A significant reduction in the level of support, if it were to occur, could have an effect on the Charter School's programs and activities.

11 Fund Balance Appropriated – General Fund (Exhibit B- 1)

The \$20,021,792 General Fund balance at June 30, 2024 consists of the following:

Restricted for debt service		\$ 496,727
Restricted for bond debt redemption		7,500,000
Restricted for future capital expenditures		5,000,000
Unrestricted, undesignated		7,025,065
Total		<u>\$ 20,021,792</u>

12 Contingent Liabilities

The Charter School participates in a number of federal and state programs that are fully or partially funded by grants received from other governmental units. Expenditures financed by grants are subject to audit by the appropriate grantor government. If expenditures are disallowed due to noncompliance with grant program regulations, the Charter School may be required to reimburse the grantor government. As of June 30, 2024, significant amounts of grant expenditures have not been audited by the various grantor agencies but the Charter School believes that disallowed expenditures, if any, based on subsequent audits will not have a material effect on any of the individual governmental funds or the overall financial position of the Charter School.

The Charter School's attorney's letter advises *"that as of June 30, 2024, and during the period from that date to the date of this letter, our firm has not been engaged by the Board to give substantive attention to or represent the Board in connection with material loss contingencies, that is, as defined in the Board's letter."*

Transportation Issue

The transportation of the Charter School's students (to and from school) is provided by the Jersey City Public Schools ("JCPS") as part of the administrative fee (10%) that goes to the resident school district. The Charter School's transportation has been provided by the JCPS since 1997 as part of a bidding process which the JCPS conducts.

JERSEY CITY COMMUNITY CHARTER SCHOOL
(County of Hudson)
Notes to the Basic Financial Statements
Year Ended June 30, 2024

12 Contingent Liabilities - *continued*

Transportation Issue - *continued*

It should be noted that the Charter School does not directly transport any of its students to and from school. It should also be noted that New Jersey Statute - Title 18A:39-1 states as follows: "*Whenever in any district there are elementary school pupils who live more than two (2) miles from their public school of attendance or secondary school pupils who live more than two and a half (2 ½) miles from their public school of attendance, the district shall provide transportation to and from school for these pupils.*"

It is the understanding of the Charter School that Jersey City Public Schools has complied and continues to comply with NJ Title 18A:39-1 in carrying out their obligations under the transportation agreement they have with the Charter School. The Charter School maintains that the "to and from" school transportation that the JCPS provided was for only eligible students.

Further, by their letter dated July 1, 2008 to the Charter School, the Jersey City Public Schools acknowledged a dispute (by the Charter School) of their billings. The Charter School is disputing billings submitted by the School District for several years. Pursuant to the dispute, the Charter School has accrued liabilities in its financial statements in the amount of \$190,660 through June 30, 2023. This is to recognize the liabilities, pending the complete resolution of all disputes.

13 Risk Management

The Charter School is exposed to various risks of loss related to torts; theft of, damage to, and destruction of assets; errors and omissions; injuries to employees; and natural disasters.

Property and Liability Insurance - The Charter School maintains commercial insurance coverage for property, liability and surety bonds. A complete schedule of insurance coverage can be found in the Statistical Section (UNAUDITED) of this Annual Comprehensive Financial Report.

New Jersey Unemployment Compensation - The Charter School has elected to fund its New Jersey Unemployment Compensation Insurance under the "Benefit Reimbursement Method". Under this plan, the Charter School is required to reimburse the New Jersey Unemployment Trust Fund For benefits paid to its former employees and charged to its account with the State. The Charter School is billed quarterly for amounts due to the State.

JERSEY CITY COMMUNITY CHARTER SCHOOL
(County of Hudson)
Notes to the Basic Financial Statements
Year Ended June 30, 2024

14 Interfund Receivables, Payables and Transfers

The composition of interfund balances as of June 30, 2024 is as follows:

Fund	Interfund Receivable	Interfund Payable
General Fund	\$ 4,593,763	\$ -
Special Revenue Fund	-	2,651,701
Enterprise Fund	-	1,942,062
Trust and Agency Fund	-	-
	<u>\$ 4,593,763</u>	<u>\$ 4,593,763</u>

The above balances are the results of revenues earned or other financing sources received in one fund which are due to another fund and/or expenditures paid by one fund on behalf of another fund and/or to cover cash balances which were in negative position. Liquidation of this interfund balances is expected within the next fiscal year.

15 Receivables

Receivables as of June 30, 2024 consisted of accounts, intergovernmental, grants and miscellaneous. All receivables are considered collectible in full. A summary of the principal items of receivables are as follows:

State aid	\$ 26,606
Federal aid	1,529,434
Other	137,128
Total receivables	<u>\$ 1,693,168</u>

16 Risk and Uncertainties – COVID-19 and Its Impact

In December 2019, an outbreak of a novel strain of coronavirus (COVID-19) originated in Wuhan, China and has since spread to other countries, including the United States. On March 11, 2020, the World Health Organization characterized COVID-19 as a pandemic. In addition, as of March 21, 2020, New Jersey State Governor Phil Murphy ordered the closure of the physical location of every “non-life sustaining” and “non-essential” business.

The Charter School’s operations are heavily dependent on both federal and state grant revenues. Its physical locations were closed from March 2020 through September 2020. The full impact of the COVID-19 outbreak continues to evolve as of the date of this report. As such it is uncertain as to the full impact that the pandemic will have on the Charter School’s financial condition, liquidity, and future results of operations.

JERSEY CITY COMMUNITY CHARTER SCHOOL
(County of Hudson)
Notes to the Basic Financial Statements
Year Ended June 30, 2024

16 Risk and Uncertainties – COVID-19 and Its Impact - *continued*

Management is actively monitoring the situation on its financial condition, liquidity and operations. The rapid development and fluidity of this situation precludes any prediction as to the ultimate material adverse impact of the COVID-19 pandemic.

Nevertheless, the COVID-19 pandemic presents material uncertainty and risk with respect to the Charter School its performance, and its financial results. However, it should be noted that as of the date of this report, the Charter School's various federal and state grants have not been materially impacted.

17 Paycheck Protection Program Loan

During the previous fiscal year ended June 30, 2021, the Charter School applied for and was approved a \$350,000 loan under the Paycheck Protection Program created as part of the relief efforts related to COVID-19 and administered by the Small Business Administration. The loan accrued interest at 1%, but payments were not required to begin for ten months after the expiration of the covered period which is a maximum of 24 weeks from the funding date. The Charter School was eligible for loan forgiveness of up to 100% of the loan, upon meeting certain requirements. The loan was uncollateralized and was fully guaranteed by the Federal government.

The loan was funded on June 8, 2021. The Charter School applied for the loan forgiveness during the prior fiscal year ended June 30, 2023. The loan forgiveness was approved and entire loan amount was recognized as revenue during the prior fiscal year ended June 30, 2023.

18 Subsequent Events

The Charter School has evaluated all subsequent events occurring through the date of the independent auditor's report which is the date the financial statements were available to be issued. Based on this evaluation, the Charter School has determined that no subsequent event requires disclosure in the financial statements.

JERSEY CITY COMMUNITY CHARTER SCHOOL
(County of Hudson)
Notes to the Basic Financial Statements
Year Ended June 30, 2024

19 Long Term Liabilities – Bonds Payable

On October 28, 2016, the Charter School issued Charter School Revenue Bonds in the sum of \$10,225,000 at variable interest rates from 5.00% to 5.75%. The Bonds consisted of Series 2016A (Tax Exempt) in the sum of \$9,365,000 (due on July 1, 2047) and Series 2016B (Taxable) in the sum of \$860,000 (due on July 1, 2023). The proceeds from the bond was used to refinance all existing long-term loans in the total amount of \$7,879,478. Also, part of the proceeds was used to establish a debt service reserve fund in the amount of \$810,88, paid issuance costs of \$255,364 and covered operating costs of \$670,508.

The debt service reserve is escrowed with Huntington National Bank, the Bond Trustee. The use of the reserve and any interest earned on the deposit is restricted for debt service.

The bonds were issued at a discount of \$609,262 as follows:

	Series 2016A	Series 2016B	
	(Tax Exempt)	(Taxable)	Total
Par value	\$ 9,365,000	\$ 860,000	\$ 10,225,000
Discount	(490,626)	(118,636)	(609,262)
	<u>\$ 8,874,374</u>	<u>\$ 741,364</u>	<u>\$ 9,615,738</u>

JERSEY CITY COMMUNITY CHARTER SCHOOL
(County of Hudson)
Notes to the Basic Financial Statements
Year Ended June 30, 2024

19 Long Term Liabilities – Bonds Payable - *continued*

The schedule of future principal and interest payments for the serial bonds is as follows:

Year ending June 30:	Serial Bonds		
	Principal	Interest	Total
2025	190,000	512,525	702,525
2026	200,000	502,288	702,288
2027	210,000	491,525	701,525
2028	220,000	480,238	700,238
2029	235,000	468,294	703,294
2030	245,000	455,694	700,694
2031	260,000	442,438	702,438
2032	275,000	428,394	703,394
2033	290,000	413,563	703,563
2034	305,000	397,181	702,181
2035	325,000	379,069	704,069
2036	340,000	359,950	699,950
2037	365,000	339,682	704,682
2038	385,000	318,119	703,119
2039	405,000	295,406	700,406
2040	430,000	271,400	701,400
2041	455,000	245,957	700,957
2042	485,000	218,932	703,932
2043	510,000	190,325	700,325
2044	540,000	160,137	700,137
2045	575,000	128,081	703,081
2046	610,000	94,013	704,013
2047	645,000	57,932	702,932
2048	685,000	19,694	704,694
	<u><u>\$ 9,185,000</u></u>	<u><u>\$ 7,670,837</u></u>	<u><u>\$ 16,855,837</u></u>

JERSEY CITY COMMUNITY CHARTER SCHOOL
(County of Hudson)
Notes to the Basic Financial Statements
Year Ended June 30, 2024

20 General Long-Term Debt

During the year ended June 30, 2024, the following changes occurred in liabilities reported in the Statement of Net Position (Deficit):

	Balance June 30, 2022	New Issues/ Additions	Maturities/ Payments	Balance June 30, 2023	Due Within One Year
Bonds payable	\$ 9,365,000	\$ -	\$ (180,000)	\$ 9,185,000	\$ 190,000
Unamortized discount	(413,729)	-	29,330	(384,399)	(29,330)
	<u>8,951,271</u>	<u>-</u>	<u>(150,670)</u>	<u>8,800,601</u>	<u>160,670</u>
Other non-current liabilities:					
Compensated absences	1,218,727	242,112	(242,112)	1,218,727	242,112
Net pension liability	2,639,789	358,811	-	2,998,600	220,583
	<u>\$ 12,809,787</u>	<u>\$ 600,923</u>	<u>\$ (392,782)</u>	<u>\$ 13,017,928</u>	<u>\$ 623,365</u>

21 Reconciliation of Government-Wide and Fund Financial Statements
Explanation of Certain Differences Between the Governmental Fund Balance Sheet (B-1) and the Government-wide Statement of Net Position (A-1).

The governmental fund balance sheet includes reconciliation between fund balance – total governmental funds and net position - governmental activities as reported in the Government-wide statement of net position. One element of that reconciliation explains that long-term liabilities, including deferred pension liability are not due and payable in the current period and therefore are not reported in the funds. The reconciliation is as follows:

Fund balance per B-1	\$ 20,756,056
Cost of capital assets net accumulated depreciation	1,226,965
Long term liabilities - the Serial Bonds	(9,185,000)
Compensated absences liability as of June 30, 2024	(1,218,727)
Bond issuance costs, net of accumulated amortization	384,399
Pension deferred outflows	814,612
Pension deferred inflows	(281,332)
Deferred pension liability as of June 30, 2024	(2,998,600)
Right-of-use assets net of accumulated amortization	-
Lease liabilities	-
Net position (per A-1) as of June 30, 2024	<u>\$ 9,498,373</u>

Required Supplementary Information

Part II

Budgetary Comparison

JERSEY CITY COMMUNITY CHARTER SCHOOL
General Fund

C-1

Budget Comparison Schedule

Year ended June 30, 2024

	Original Budget	Budget Transfers	Final Budget	Actual	Variance Final to Actual
Revenues					
Local Sources:					
Local tax levy	\$ 12,384,283	\$ -	\$ 12,384,283	\$ 12,017,765	\$ (366,518)
Miscellaneous	-	-	-	283,366	283,366
Total revenues -local sources	12,384,283	-	12,384,283	12,301,131	(83,152)
Federal and state sources:					
State sources	2,775,132	-	2,775,132	2,681,705	(93,427)
Federal source - SEMI				7,625	7,625
Reimbursed TPAF-Social Security (non-budgeted)	272,292	-	272,292	185,156	(87,136)
TPAF - Post Retirement Medical (On-Behalf - Non-Budgeted)	-	-	-	255,684	255,684
Teacher's Pension & Annuity Fund (On-Behalf-Non-Budgeted)	-	-	-	939,450	939,450
Long Term Disability Insurance (On-Behalf-Non-Budgeted)	-	-	-	558	558
Total -federal and state sources	3,047,424	-	3,047,424	4,070,178	1,022,754
Total revenues	15,431,707	-	15,431,707	16,371,309	939,602
Expenditures					
Current expense:					
Instruction					
Salaries of teachers	3,111,224	(333,000)	2,778,224	2,059,174	719,050
Other salaries for instruction	125,449	362,500	487,949	501,620	(13,671)
Purchased profesional technical services	63,000	-	63,000	33,000	30,000
Other purchased services	7,000	2,500	9,500	7,988	1,512
General educational supplies	60,000	1,000	61,000	98,435	(37,435)
Textbooks	50,000	-	50,000	27,468	22,532
Miscellaneous expenses	16,000	22,000	38,000	36,528	1,472
	3,432,673	55,000	3,487,673	2,764,213	723,460

JERSEY CITY COMMUNITY CHARTER SCHOOL
General Fund

C-1

Budget Comparison Schedule

Year ended June 30, 2024

	Original Budget	Budget Transfers	Final Budget	Actual	Variance Final to Actual
Administrative cost:					
Salaries	586,942	103,000	689,942	612,712	77,230
Total benefit costs	2,020,574	(39,000)	1,981,574	1,105,800	875,774
Professional /Technical service	224,500	(134,500)	90,000	48,783	41,217
Other purchased services	78,000	10,000	88,000	73,204	14,796
Communications and Telephones	97,100	26,000	123,100	105,088	18,012
Supplies and materials	30,000	-	30,000	21,491	8,509
Judgements against charter school	-	-	-	-	-
Interest on current loans	-	-	-	-	-
Mortgage interest	-	-	-	-	-
Miscellaneous expenses	53,700	20,500	74,200	69,566	4,634
	<u>3,090,816</u>	<u>(14,000)</u>	<u>3,076,816</u>	<u>2,036,644</u>	<u>1,040,172</u>
Support services:					
Salaries	953,192	(69,000)	884,192	551,878	332,314
Purchased prof/tech service	172,500	314,000	486,500	618,153	(131,653)
Other purchased services	-	-	-	-	-
Rent on land and buildings	-	-	-	-	-
Insurance-fidelity, liability property	68,500	60,000	128,500	122,692	5,808
Supplies and materials	30,000	74,000	104,000	99,024	4,976
Energy & Utilities	210,000	-	210,000	163,862	46,138
Miscellaneous expenses	5,000	-	5,000	37,066	(32,066)
Transportation other than to/from school	32,000	20,000	52,000	49,621	2,379
Total support services	<u>1,471,192</u>	<u>399,000</u>	<u>1,870,192</u>	<u>1,642,296</u>	<u>227,896</u>

JERSEY CITY COMMUNITY CHARTER SCHOOL
General Fund

C-1

Budget Comparison Schedule

Year ended June 30, 2024

	Original Budget	Budget Transfers	Final Budget	Actual	Variance Final to Actual
Capital outlay:					
Instructional equipment	30,000	10,000	40,000	-	40,000
Non-instructional equipment	56,000	(35,000)	21,000	-	21,000
Purchase land/improvements	500,000	(229,000)	271,000	90,786	180,214
Miscellaneous expenses	2,500	-	2,500	-	2,500
Lease purchase agreements - principal	-	-	-	-	-
Total capital outlay	<u>588,500</u>	<u>(254,000)</u>	<u>334,500</u>	<u>90,786</u>	<u>243,714</u>
Reimbursed TPAF-Social Security (non-budgeted)	-	-	-	185,156	(185,156)
TPAF - Post Retirement Medical (On-Behalf - Non-Budgeted)				255,684	(255,684)
Teacher's Pension & Annuity Fund (On-Behalf-Non-Budgeted)				939,450	(939,450)
Long Term Disability Insurance (On-Behalf-Non-Budgeted)	-	-	-	558	(558)
Total expenditures	<u>8,583,181</u>	<u>186,000</u>	<u>8,769,181</u>	<u>7,914,787</u>	<u>2,050,086</u>
Excess (deficiency) of revenues over (under) expenditures	6,848,526	(186,000)	6,662,526	8,456,522	(1,110,484)
Other financing sources:					
Transfer to debt service fund - interest	(536,963)	-	(536,963)	(522,278)	(14,685)
Transfer to debt service fund - principal	(145,000)	(35,000)	(180,000)	(180,000)	-
Transfer to cover food deficit	-	-	-	-	-
Total other financing sources/(uses)	<u>(681,963)</u>	<u>(35,000)</u>	<u>(716,963)</u>	<u>(702,278)</u>	<u>(14,685)</u>
Excess (deficiency) of revenues and other financing sources over (under) expenditures and other financing uses	6,166,563	(221,000)	5,945,563	7,754,244	(1,125,169)
Fund balances, beginning of year	<u>12,267,548</u>	<u>-</u>	<u>12,267,548</u>	<u>12,267,548</u>	<u>-</u>
Fund balances, end of year	<u>\$ 18,434,111</u>	<u>\$ (221,000)</u>	<u>\$ 18,213,111</u>	<u>\$ 20,021,792</u>	<u>\$ (1,125,169)</u>

JERSEY CITY COMMUNITY CHARTER SCHOOL
Special Revenue Fund

C-2

Budget Comparison Schedule

Year ended June 30, 2024

	Original Budget	Budget Transfers	Final Budget	Actual	Variance Final to Actual
Revenues					
Federal sources	\$ 3,189,096	\$ -	\$ 3,189,096	\$ 3,189,096	\$ -
State sources	-	-	-	-	-
Local sources	29,726	-	29,726	29,726	-
Total revenues -all sources	<u>\$ 3,189,096</u>	<u>\$ -</u>	<u>\$ 3,189,096</u>	<u>\$ 3,189,096</u>	<u>\$ -</u>
Expenditures					
Current Expenditures:					
Instruction:					
Salaries of teachers	\$ 1,088,576	\$ -	\$ 1,088,576	\$ 1,088,576	\$ -
Purchased Prof. and technical services	1,000	-	1,000	1,000	-
Other purchased services	-	-	-	-	-
General supplies	103,616	-	103,616	103,616	-
Miscellaneous expenditures	34,391	-	34,391	34,391	-
Total instruction	<u>1,227,583</u>	<u>-</u>	<u>1,227,583</u>	<u>1,227,583</u>	<u>-</u>
Support services					
Support services salaries	1,050,198	-	1,050,198	1,050,198	-
Employee benefits	396,659	-	396,659	396,659	-
Purchased professional services	303,823	-	303,823	303,823	-
Other purchased services	8,250	-	8,250	8,250	-
Supplies	2,112	-	2,112	2,112	-
Miscellaneous expenditures	143,960	-	143,960	143,960	-
Total support services	<u>1,905,002</u>	<u>-</u>	<u>1,905,002</u>	<u>1,905,002</u>	<u>-</u>
Capital Outlay:					
Facilities acquisition and construction services					
Instructional equipment	-	-	-	-	-
Noninstructional equipment	-	-	-	-	-
Construction services	103,950	-	103,950	103,950	-
Total facilities acquisition and construction services	<u>103,950</u>	<u>-</u>	<u>103,950</u>	<u>103,950</u>	<u>-</u>
Total expenditures	<u>\$ 3,236,535</u>	<u>\$ -</u>	<u>\$ 3,236,535</u>	<u>\$ 3,236,535</u>	<u>\$ -</u>

Notes to Required Supplementary Information

JERSEY CITY COMMUNITY CHARTER SCHOOL
Note to Required Supplementary Information
Budget to GAAP Reconciliation

C-3

Year ended June 30, 2024

	General Fund	Special Revenue Fund
	<hr/>	<hr/>
Sources/inflows of resources		
Actual amounts (budgetary basis) "revenue"		
from the budgetary comparison schedule:	[C-1] \$ 16,371,309	
	[C-2]	\$ 3,218,822
Difference - budget to GAAP:		
Grant accounting budgetary basis differs from GAAP in that encumbrances are recognized as expenditures, and the related revenue is recognized.	-	-
Total revenues as reported on the statement of revenues, expenditures and changes in fund balances - governmental funds	[B-2] <u>\$ 16,371,309</u>	<u>\$ 3,218,822</u>

Note 1

Uses/outflows of resources		
Actual amounts (budgetary basis) "total outflows" from the budgetary comparison schedule	[C-1] \$ 7,914,787	
	[C-2]	\$ 3,218,822
Differences - budget to GAAP		
Encumbrances for supplies and equipment ordered but not received are reported in the year the order is placed for budgetary purposes, but in the year the supplies are received for financial reporting purposes.		-
Transfers to and from other funds are presented as outflows of budgetary resources but are not expenditures for financial reporting purposes.		
Net transfer (outflows) to general fund	-	-
Total expenditures as reported on the statement of revenues, expenditures, and changes in fund balances - governmental funds	[B-2] <u>\$ 7,914,787</u>	<u>\$ 3,218,822</u>

Note 1) The general fund budget basis of the use/outflow of resources is GAAP, therefore no reconciliation is required.

JERSEY CITY COMMUNITY CHARTER SCHOOL

L-1

**Schedule of the Charter School's Proportionate Share of the Net Pension Liability - PERS
Last Ten Fiscal Years**

	2023	2022	2021	2020	Fiscal Year Ended June 30,		2017	2016	2015	2014
					2019	2018				
Charter School's proportion of the net pension liability (assets)	0.0207023088%	0.0174920381%	0.0147760740%	0.0150770758%	0.0146086364%	0.0210909707%	0.0197046999%	0.0194647434%	0.0215516047%	0.0204915036%
Charter School's proportionate share of the net pension liability (assets)	2,998,600	2,639,789	1,750,447	2,460,308	2,632,255	4,152,707	4,586,939	5,764,899	4,837,903	3,836,570
Charter School's covered employee payroll	\$ 1,189,987	\$ 1,160,963	\$ 1,132,647	\$ 1,078,711	\$ 1,175,734	\$ 1,094,546	\$ 1,211,121	\$ 1,332,472	\$ 1,532,250	\$ 1,439,205
Charter School's proportionate share of the net pension liability (assets) as a percentage of its covered employee payroll	251.99%	227.38%	154.54%	228.08%	223.88%	379.40%	378.73%	432.65%	315.74%	266.58%
Plan fiduciary net position as a percentage of the total pension liability - local	65.23%	53.60%	53.60%	53.60%	53.60%	53.60%	36.78%	31.20%	38.21%	40.71%

Note

Until a full ten year trend is compiled, information will be presented for those years for which information is available.

JERSEY CITY COMMUNITY CHARTER SCHOOL

L-2

**Schedule of the Charter School's Contributions - PERS
Last Ten Fiscal Years**

	<u>2023</u>	<u>2022</u>	<u>2021</u>	<u>2020</u>	<u>Fiscal Year Ended June 30,</u>		<u>2017</u>	<u>2016</u>	<u>2015</u>	<u>2014</u>
					<u>2019</u>	<u>2018</u>				
Contractually required contribution	\$ 276,692	\$ 220,583	\$ 181,662	\$ 173,434	\$ 151,555	\$ 209,787	\$ 182,543	\$ 298,126	\$ 172,922	\$ 168,929
Contribution in relation to the contractually required contribution	<u>(276,692)</u>	<u>(220,583)</u>	<u>(181,662)</u>	<u>(173,434)</u>	<u>(151,555)</u>	<u>(209,787)</u>	<u>(182,543)</u>	<u>(298,126)</u>	<u>(172,922)</u>	<u>(168,929)</u>
Contribution deficiency (excess)	<u>\$ -</u>	<u>\$ -</u>	<u>\$ -</u>	<u>\$ -</u>	<u>\$ -</u>	<u>\$ -</u>	<u>\$ -</u>	<u>\$ -</u>	<u>\$ -</u>	<u>\$ -</u>
Charter School's covered employee payroll	\$ 1,189,987	\$ 1,160,963	\$ 1,132,647	\$ 1,078,711	\$ 1,175,734	\$ 1,094,546	\$ 1,211,121	\$ 1,332,472	\$ 1,532,250	\$ 1,439,205
Contributions as a percentage of covered employee payroll	23.25%	19.00%	16.04%	16.08%	12.89%	19.17%	15.07%	22.37%	11.29%	11.74%

Note

Until a full ten year trend is compiled, information will be presented for those years for which information is available.

JERSEY CITY COMMUNITY CHARTER SCHOOL

L-3

**Schedule of the Charter School's Proportionate Share of the Net Pension Liability - TPAF
Last Ten Fiscal Years**

	<u>2023</u>	<u>2022</u>	<u>2021</u>	<u>2020</u>	<u>Fiscal Year Ended June 30,</u>		<u>2017</u>	<u>2016</u>	<u>2015</u>	<u>2014</u>
					<u>2019</u>	<u>2018</u>				
Charter School's proportion of the net pension liability (assets)**	N/A	N/A	N/A	N/A	N/A	N/A	N/A	N/A	N/A	N/A
Charter School's proportionate share of the net pension liability (assets)**	N/A	N/A	N/A	N/A	N/A	N/A	N/A	N/A	N/A	N/A
State's proportionate share of the net pension liability (assets) associated with the Charter School	\$ 11,336,826	\$ 10,587,339	\$ 10,821,304	\$ 14,544,638	\$ 12,506,541	\$ 13,548,150	\$ 16,833,090	\$ 18,969,611	\$ 14,907,880	\$ 11,060,710
Total	<u>\$ 11,336,826</u>	<u>\$ 10,587,339</u>	<u>\$ 10,821,304</u>	<u>\$ 14,544,638</u>	<u>\$ 12,506,541</u>	<u>\$ 13,548,150</u>	<u>\$ 16,833,090</u>	<u>\$ 18,969,611</u>	<u>\$ 14,907,880</u>	<u>\$ 11,060,710</u>
Charter School's covered employee payroll	\$ 2,220,729	\$ 2,215,191	\$ 2,209,667	\$ 2,204,157	\$ 2,215,233	\$ 2,239,173	\$ 2,412,127	\$ 2,737,247	\$ 2,194,632	\$ 1,954,170 *
Charter School's proportionate share of the net pension liability (assets) as a percentage of its covered employee payroll**	N/A	N/A	N/A	N/A	N/A	N/A	N/A	N/A	N/A	N/A
Plan fiduciary net position as a percentage of the total pension liability	34.68%	32.29%	35.52%	24.60%	26.95%	26.49%	25.41%	22.33%	28.71%	33.64%

**Note
TPAF is a special funding situation as defined by GASB Statement No. 68 in which the State of New Jersey is 100% responsible for contributions to the plan. Since the Charter School (employer) does not contribute directly to the plan there is no net pension liability to report in the financial statements of the Charter School.

Charter School's covered employee payroll information for 2013 not provided.

Note

Until a full ten year trend is compiled, information will be presented for those years for which information is available.

JERSEY CITY COMMUNITY CHARTER SCHOOL

M-1

Schedule of the State's Proportionate Share of the Net OPEB Liability Associated with the Charter School
and Changes in the Total OPEB Liability and Related Ratios
Public Employee's Retirement System and Teachers' Pension and Annuity Fund
Last Seven Fiscal Years

	Fiscal Year Ended						
	2023	2022	2021	2020	2019	2018	2017
Total OPEB Liability							
Service cost	\$ 675,436	\$ 858,032	\$ 1,071,533	\$ 629,389	\$ 716,211	\$ 643,842	\$ 773,102
Interest cost	314,204	222,316	267,098	239,524	273,073	289,102	243,956
Changes of benefits terms	-	-	(10,959)	-	-	-	-
Differences in expected and actual experiences	(238,194)	(524,205)	(2,025,321)	2,156,046	(1,020,657)	(1,109,627)	-
Changes of assumptions	17,982	(2,250,410)	10,158	2,043,558	94,049	(738,217)	(1,205,472)
Member contributions	8,052	7,064	6,828	5,903	5,740	5,945	6,409
Gross benefit payments	(244,927)	(220,211)	(210,399)	(194,764)	(193,630)	(172,016)	(174,039)
Net change in total OPEB liability	532,553	(1,907,414)	(891,062)	4,879,656	(125,214)	(1,080,971)	(356,044)
Total OPEB liability - beginning	8,388,946	10,296,360	11,187,422	6,307,766	6,432,980	7,513,951	7,869,995
Total OPEB liability, ending	<u>\$ 8,921,499</u>	<u>\$ 8,388,946</u>	<u>\$ 10,296,360</u>	<u>\$ 11,187,422</u>	<u>\$ 6,307,766</u>	<u>\$ 6,432,980</u>	<u>\$ 7,513,951</u>
Covered employee payroll - PERS and TPAF	\$ 2,609,361	\$ 2,443,707	\$ 2,475,216	\$ 2,353,920	\$ 2,105,520	\$ 1,902,972	\$ 1,890,176
Total OPEB liability as a percentage of covered employee payroll	342%	343%	416%	475%	300%	338%	398%
State's proportionate share of the net OPEB liability (asset) associated with the Charter School	0.02%	0.01%	0.02%	0.02%	0.01%	0.01%	0.01%

JERSEY CITY COMMUNITY CHARTER SCHOOL
(County of Hudson)
Notes to Required Supplementary Information
Year Ended June 30, 2024

1. Pension – Public Employees’ Retirement System (PERS)

Benefit Changes - There were none.

Changes of Assumptions - There were none.

2. Pension – Teachers’ Pension and Annuity Fund (TPAF)

Benefit Changes - There were none.

Changes of Assumptions

In the July 1, 2022 actuarial valuation the salary increases were 2.75 – 4.25% based on years of service while in the July 1, 2021 actuarial valuation the salary increases were 2.75% – 5.65% based on years of service.

3. Other Post-Retirement Benefit Plan – Public Employees’ Retirement System (PERS) and Teachers’ Pension and Annuity Fund (TPAF)

Benefit Changes - There were none.

Changes of Assumptions

The discount rate for June 30, 2023 was 3.65%. The discount rate for June 30, 2022 was 3.54%, a change of .11%.

The health care trend rates in the valuation as of June 30, 2023 were based on the following:

For pre-Medicare medical benefits, the trend rate is initially 6.50% and decreases to a 4.50% long term trend rate after nine years. For post-65 medical benefits PPO, the trend is increasing to 14.8% in fiscal year 2026 and decreases to 4.50% in fiscal year 2033. For HMO the trend is increasing to 17.4% in fiscal year 2026 and decreases to 4.50% in fiscal year 2033. For prescription drug benefits, the initial trend rate is 9.50% and decreases to a 4.50% long term rate after seven years. For the Medicare Part B reimbursement, the trend rate is 5.00%.

The health care trend rates in the valuation as of June 30, 2022 were based on the following:

For pre-Medicare medical benefits, the trend rate is initially 6.25% and decreases to a 4.50% long term trend rate after eight years. For post-65 medical benefits PPO, the trend is initially -1.99% in fiscal year 2023, increasing to 13.44% in fiscal year 2026 and decreases to 4.5% in fiscal year 2033. For HMO the trend is initially -3.54% in fiscal year 2023, increasing to 15.19% in fiscal year 2026 and decreases to 4.50% in fiscal year 2033. For prescription drug benefits, the initial trend rate is 8.00% and decreases to a 4.50% long term rate after eight years.

Other Supplementary Information

School Level Schedules

Special Revenue Fund

JERSEY CITY COMMUNITY CHARTER SCHOOL
Special Revenue Fund

E-1

Combining Schedule of Program, Revenue and Expenditures
Budgetary Basis

Year ended June 30, 2024

	Title IA Current Year 2023-2024	Title IIA Current Year 2023-2024	Title IVA Current Year 2023-2024	I.D.E.A. Basic Current Year 2023-2024	I.D.E.A. Preschool Current Year 2023-2024	CRRSA ESSER II	ARP ESSER III	ARP ESSER III Learning Acceleration	ARP ESSER III Beyond School	Rutgers Grant	Student Activity Fund	Total
Revenues												
Federal sources	\$ 378,927	\$ 43,818	\$ 10,612	\$ 137,181	\$ 4,146	\$ 183,978	\$ 2,362,744	\$ 27,690	\$ 40,000	\$ -	\$ -	\$ 3,189,096
State sources	-	-	-	-	-	-	-	-	-	-	-	-
Local sources	-	-	-	-	-	-	-	-	-	7,543	22,183	29,726
Total revenues -all sources	<u>\$ 378,927</u>	<u>\$ 43,818</u>	<u>\$ 10,612</u>	<u>\$ 137,181</u>	<u>\$ 4,146</u>	<u>\$ 183,978</u>	<u>\$ 2,362,744</u>	<u>\$ 27,690</u>	<u>\$ 40,000</u>	<u>\$ 7,543</u>	<u>\$ 22,183</u>	<u>\$ 3,218,822</u>
Expenditures												
Instruction												
Salaries of teachers	\$ 277,544	\$ -	\$ -	\$ 137,181	\$ -	\$ 7,875	\$ 625,921	\$ 3,095	\$ 36,960	\$ -	\$ -	\$ 1,088,576
Purchased Prof. and technical services	-	-	1,000	-	-	-	-	-	-	-	-	1,000
Other purchased services	-	-	-	-	-	-	-	-	-	-	-	-
General supplies	66,193	-	-	-	4,146	-	30,051	3,013	213	-	-	103,616
Miscellaneous expenditures	-	-	-	-	-	-	27,073	-	-	7,318	-	34,391
Total instruction	<u>343,737</u>	<u>-</u>	<u>1,000</u>	<u>137,181</u>	<u>4,146</u>	<u>7,875</u>	<u>683,045</u>	<u>6,108</u>	<u>37,173</u>	<u>7,318</u>	<u>-</u>	<u>1,227,583</u>
Support services												
Support services salaries	12,000	-	-	-	-	176,103	861,870	-	-	225	-	1,050,198
Employee benefits	22,440	-	-	-	-	-	368,557	2,835	2,827	-	-	396,659
Purchased professional services	-	41,867	-	-	-	-	243,209	18,747	-	-	-	303,823
Other purchased services	750	-	7,500	-	-	-	-	-	-	-	-	8,250
Supplies	-	-	2,112	-	-	-	-	-	-	-	-	2,112
Miscellaneous expenditures	-	1,951	-	-	-	-	102,113	-	-	-	39,896	143,960
Total support services	<u>35,190</u>	<u>43,818</u>	<u>9,612</u>	<u>-</u>	<u>-</u>	<u>176,103</u>	<u>1,575,749</u>	<u>21,582</u>	<u>2,827</u>	<u>225</u>	<u>39,896</u>	<u>1,905,002</u>
Facilities acquisition and construction services												
Instructional equipment	-	-	-	-	-	-	-	-	-	-	-	-
Noninstructional equipment	-	-	-	-	-	-	-	-	-	-	-	-
Construction services	-	-	-	-	-	-	103,950	-	-	-	-	103,950
Total facilities acquisition and construction services	<u>-</u>	<u>-</u>	<u>-</u>	<u>-</u>	<u>-</u>	<u>-</u>	<u>103,950</u>	<u>-</u>	<u>-</u>	<u>-</u>	<u>-</u>	<u>103,950</u>
Total expenditures	<u>\$ 378,927</u>	<u>\$ 43,818</u>	<u>\$ 10,612</u>	<u>\$ 137,181</u>	<u>\$ 4,146</u>	<u>\$ 183,978</u>	<u>\$ 2,362,744</u>	<u>\$ 27,690</u>	<u>\$ 40,000</u>	<u>\$ 7,543</u>	<u>\$ 39,896</u>	<u>\$ 3,236,535</u>
Excess (deficiency) of revenues over (under) expenditures	<u>-</u>	<u>-</u>	<u>-</u>	<u>-</u>	<u>-</u>	<u>-</u>	<u>-</u>	<u>-</u>	<u>-</u>	<u>-</u>	<u>(17,713)</u>	<u>(17,713)</u>
Fund balances, beginning of year	-	-	-	-	-	-	-	-	-	-	12,458	12,458
Prior period adjustment	-	-	-	-	-	-	-	-	-	-	-	-
Fund balances, beginning of year (restated)	<u>-</u>	<u>-</u>	<u>-</u>	<u>-</u>	<u>-</u>	<u>-</u>	<u>-</u>	<u>-</u>	<u>-</u>	<u>-</u>	<u>12,458</u>	<u>12,458</u>
Fund balances, end of year	<u>\$ -</u>	<u>\$ -</u>	<u>\$ -</u>	<u>\$ -</u>	<u>\$ -</u>	<u>\$ -</u>	<u>\$ -</u>	<u>\$ -</u>	<u>\$ -</u>	<u>\$ -</u>	<u>\$ (5,255)</u>	<u>\$ (5,255)</u>

Capital Projects Fund

Enterprise Fund

JERSEY CITY COMMUNITY CHARTER SCHOOL
Enterprise Funds

G-1

Combining Statement of Net Position

June 30, 2024

	<u>Food Services</u>	<u>After-Care Program</u>	<u>Total</u>
Assets			
Current assets:			
Cash and cash equivalents	\$ 2,478,525	\$ -	\$ 2,478,525
Accounts receivable:	-	-	-
Federal	74,964	-	74,964
State	1,581	-	1,581
Other current assets	-	-	-
Interfunds receivable	(2,707,602)	765,540	(1,942,062)
Total current assets	<u>\$ (152,532)</u>	<u>\$ 765,540</u>	<u>\$ 613,008</u>
Liabilities			
Current liabilities:			
Interfunds payable	\$ -	\$ -	\$ -
Accounts payable	-	-	-
Total current liabilities	<u>-</u>	<u>-</u>	<u>-</u>
Net position			
Unrestricted	(152,532)	765,540	613,008
Total net position	<u><u>\$ (152,532)</u></u>	<u><u>\$ 765,540</u></u>	<u><u>\$ 613,008</u></u>

JERSEY CITY COMMUNITY CHARTER SCHOOL
Enterprise Fund

G-2

Combining Statement of Revenues, Expenditures and Changes in Net Position

Year ended June 30, 2024

	Food Services	After School Programs	Total
Operating revenues:			
Charges for services:			
Daily sales - reimbursable program	\$ 2,641	\$ 152,561	\$ 155,202
Daily sales - non-reimbursable program	-	-	-
Miscellaneous revenue	-	-	-
Total Operating revenues	<u>2,641</u>	<u>152,561</u>	<u>155,202</u>
Operating expenses:			
Cost of sales - reimbursable program	446,432	-	446,432
Cost of sales - non-reimbursable program	-	-	-
Salaries	91,045	15,875	106,920
Employee benefits	-	-	-
Professional /technical service	660	-	660
Supplies and materials	-	-	-
Depreciation	-	-	-
Miscellaneous	4,986	-	4,986
Total operating expenses	<u>543,123</u>	<u>15,875</u>	<u>558,998</u>
Operating income/(loss)	<u>(540,482)</u>	<u>136,686</u>	<u>(403,796)</u>
Nonoperating revenues:			
State sources:			
State school lunch program	5,566	-	5,566
State school breakfast program	2,998	-	2,998
Federal sources:			
National school lunch program	322,163	-	322,163
National school breakfast program	77,143	-	77,143
After school snacks program	-	-	-
Healthy, Hunger-Free Kids Act	6,422	-	6,422
Summer Food Program	653	-	653
Emergency Operation Cost Reimbursements	18,192	-	18,192
Total nonoperating revenues	<u>433,137</u>	<u>-</u>	<u>433,137</u>
Net income/(loss) before contributions & transfers	(107,345)	136,686	29,341
Other financing sources:			
Transfer in/(out) - board contribution	-	-	-
	<u>-</u>	<u>-</u>	<u>-</u>
Change in net position	(107,345)	136,686	29,341
Total net position-beginning of year	<u>(45,187)</u>	<u>628,854</u>	<u>583,667</u>
Total net position-end of year	<u><u>\$ (152,532)</u></u>	<u><u>\$ 765,540</u></u>	<u><u>\$ 613,008</u></u>

JERSEY CITY COMMUNITY CHARTER SCHOOL
Enterprise Fund

G-3

Statement of Cash Flows

Year ended June 30, 2024

	Food Services	After School Programs	Total
	<u> </u>	<u> </u>	<u> </u>
Cash flows from operating activities			
Operating loss	\$ (540,482)	\$ 136,686	\$ (403,796)
Adjustment to reconcile operating loss to net cash used in operating activities:			
Changes in assets and liabilities:			
Accounts receivable	(51,338)	-	(51,338)
Due to/from general fund	2,286,692	(136,686)	2,150,006
Accounts payable	-	-	-
Net cash used in operating activities	<u>1,694,872</u>	<u>-</u>	<u>1,694,872</u>
 Cash flows from noncapital financing activities:			
Cash received from state reimbursements	8,564	-	8,564
Cash received from federal reimbursements	424,573	-	424,573
Transfers within fund	-	-	-
Operating subsidies and transfers from other funds	-	-	-
Net cash provided by noncapital financing activities	<u>433,137</u>	<u>-</u>	<u>433,137</u>
 Cash flows from investing activities	-	-	-
 Net change in cash and cash equivalents	2,128,009	-	2,128,009
Cash and cash equivalents, beginning	350,516	-	350,516
Cash and cash equivalents, ending	<u>\$ 2,478,525</u>	<u>\$ -</u>	<u>\$ 2,478,525</u>

Fiduciary Fund
Not Applicable

Long Term Debt

I-1

Year ended June 30, 2024

Issued			Annual Maturities		Interest Rate	Amount	Issued	Retired	Amount
Purpose	Date of Issue	Amount of Issue	Date	Amount		Outstanding #####			Outstanding June 30, 2023
New Jersey Economic Development Authority									
Series 2016B Charter School Revenue Bonds Term 1 Coupon	7/1/2047	\$ 860,000	7/1/2017	\$ 120,000	5.525%	\$ -	\$ -	\$ -	\$ -
			7/1/2018	125,000	5.000%				
			7/1/2019	130,000	5.000%				
			7/1/2020	140,000	5.000%				
			7/1/2021	145,000	5.000%				
			7/1/2022	200,000	5.000%	-	-	-	-
Series 2016A Charter School Revenue Bonds Term 2-3 Coupon	7/1/2022	\$ 9,365,000	7/1/2023	180,000	5.250%				
			7/1/2024	190,000	5.250%				
			7/1/2025	200,000	5.250%				
			7/1/2026	210,000	5.250%				
			7/1/2027	220,000	5.250%				
			7/1/2028	235,000	5.250%				
			7/1/2029	245,000	5.250%				
			7/1/2030	260,000	5.250%				
			7/1/2031	275,000	5.250%				
			7/1/2032	290,000	5.250%				
			7/1/2033	305,000	5.750%				
			7/1/2034	325,000	5.750%				
			7/1/2035	340,000	5.750%				
			7/1/2036	365,000	5.750%				
			7/1/2037	385,000	5.750%				
			7/1/2038	405,000	5.750%				
			7/1/2039	430,000	5.750%				
			7/1/2040	455,000	5.750%				
			7/1/2041	485,000	5.750%				
			7/1/2042	510,000	5.750%				
			7/1/2043	540,000	5.750%				
			7/1/2044	575,000	5.750%				
			7/1/2045	610,000	5.750%				
			7/1/2046	645,000	5.750%				
7/1/2047	685,000	5.750%			9,365,000	-	180,000	9,185,000	
				\$ 10,225,000		\$ 9,365,000	\$ -	\$ 180,000	\$ 9,185,000

JERSEY CITY COMMUNITY CHARTER SCHOOL
Long-Term Debt
Schedule of Obligations Under Capital Leases

I-2

Year ended June 30, 2024

NOT APPLICABLE

JERSEY CITY COMMUNITY CHARTER SCHOOL
Budgetary Comparison Schedule
Debt Service Fund

I-3

Year ended June 30, 2024

	Original Budget	Budget Transfers	Final Budget	Actual	Variance Positive/(Negative) Final to Actual
Revenues					
Interest earned on Debt Service Reserve	\$ -	\$ -	\$ -	\$ -	\$ -
Total revenues	-	-	-	-	-
Expenditures					
Regular Debt Service:					
Interest	536,963	-	536,963	491,663	45,300
Redemption of Principal	145,000	-	145,000	180,000	(35,000)
Other bond related costs	-	-	-	28,423	(28,423)
Total expenditures	681,963	-	681,963	700,086	(18,123)
Excess/(deficiency) of revenues over/ (under) expenditures	(681,963)	-	(681,963)	(700,086)	18,123
Other financing sources:					-
Operating transfers in - General Fund	681,963	-	681,963	702,278	(20,315)
Total other financing sources	681,963	-	681,963	702,278	(20,315)
Excess/(deficiency) of revenues over/ (under) expenditures	-	-	-	2,192	(2,192)
Fund balance, beginning of year	-	-	-	737,327	737,327
Fund balance, end of year	\$ -	\$ -	\$ -	\$ 739,519	\$ 735,135

Statistical Section

JERSEY CITY COMMUNITY CHARTER SCHOOL STATISTICAL SECTION

J SERIES

Contents

Financial Trends

These schedules contain trend information to help the reader understand how the charter school's financial performance and wellbeing have changed over time.

Revenue Capacity (Not Applicable to Charter School)

These schedules contain information to help the reader assess the district's most significant local revenue source, the property tax.

Debt Capacity

These schedules present information to help the reader assess the affordability of the charter school's current levels of outstanding debt and the charter school's ability to issue additional debt in the future.

Demographic and Economic Information

These schedules offer demographic and economic indicators to help the reader understand the environment within which the charter school's financial activities take place.

Operating Information

These schedules contain service and infrastructure data to help the reader understand how the information in the charter school's financial report relates to the services the charter school provides and the activities it performs.

Charter School Performance Framework Financial Indicators

These schedules contain summary information for the past three (3) years that seek to present the Charter School's financial and sustainability indicators.

Sources:

Unless otherwise noted, the information in these schedules is derived from the Annual Comprehensive Financial Reports (ACFR) the relevant year.

JERSEY CITY COMMUNITY CHARTER SCHOOL
County of Hudson New Jersey

J-1

NET POSITION BY COMPONENT

Last Ten Fiscal Years

(accrual basis of accounting)

(Unaudited)

	Fiscal Year Ended June 30,									
	2024	2023	2022	2021	2020	2019	2018	2017	2016	2015
Governmental activities										
Invested in capital assets, net of related debt	\$ (6,354,909)	\$ (6,446,865)	\$ (6,103,676)	\$ (5,680,409)	\$ (6,512,089)	\$ (4,112,295)	\$ (3,490,807)	\$ (2,728,576)	\$ (1,742,398)	\$ (1,141,122)
Restricted	1,236,246	1,186,043	843,751	843,471	848,360	1,298,156	1,276,565	1,298,468	-	-
Unrestricted	2,044,690	6,513,403	1,123,661	(2,312,700)	(3,744,512)	(7,104,293)	(7,185,499)	(7,221,848)	(5,354,604)	(4,937,945)
Total governmental activities net position	<u>\$ (3,073,973)</u>	<u>\$ 1,252,581</u>	<u>\$ (4,136,264)</u>	<u>\$ (7,149,638)</u>	<u>\$ (9,408,241)</u>	<u>\$ (9,918,432)</u>	<u>\$ (9,399,741)</u>	<u>\$ (8,651,956)</u>	<u>\$ (7,097,002)</u>	<u>\$ (6,079,067)</u>
Business-type activities										
Invested in capital assets, net of related debt	\$ -	\$ -	\$ -	\$ -	\$ -	\$ -	\$ -	\$ -	\$ -	\$ -
Restricted	-	-	-	-	-	-	-	-	-	-
Unrestricted	613,008	583,667	531,769	397,264	326,893	261,608	245,585	190,366	150,244	134,206
Total business-type activities	<u>\$ 613,008</u>	<u>\$ 583,667</u>	<u>\$ 531,769</u>	<u>\$ 397,264</u>	<u>\$ 326,893</u>	<u>\$ 261,608</u>	<u>\$ 245,585</u>	<u>\$ 190,366</u>	<u>\$ 150,244</u>	<u>\$ 134,206</u>
School-wide										
Invested in capital assets, net of related debt	\$ (6,354,909)	\$ (6,446,865)	\$ (6,103,676)	\$ (5,680,409)	\$ (6,512,089)	\$ (4,112,295)	\$ (3,490,807)	\$ (2,728,576)	\$ (1,742,398)	\$ (1,141,122)
Restricted	1,236,246	1,186,043	843,751	843,471	848,360	1,298,156	1,276,565	1,298,468	-	-
Unrestricted	2,657,698	7,097,070	1,655,430	(1,915,436)	(3,417,619)	(6,842,685)	(6,939,914)	(7,031,482)	(5,204,360)	(4,803,739)
Total charter school net position	<u>\$ (2,460,965)</u>	<u>\$ 1,836,248</u>	<u>\$ (3,604,495)</u>	<u>\$ (6,752,374)</u>	<u>\$ (9,081,348)</u>	<u>\$ (9,656,824)</u>	<u>\$ (9,154,156)</u>	<u>\$ (8,461,590)</u>	<u>\$ (6,946,758)</u>	<u>\$ (5,944,861)</u>

Source: Charter School's Records

JERSEY CITY COMMUNITY CHARTER SCHOOL
County of Hudson New Jersey

J-2

CHANGES IN NET POSITION

Last Ten Fiscal Years

(accrual basis of accounting)

(Unaudited)

	Fiscal Year Ended June 30,									
	2024	2023	2022	2021	2020	2019	2018	2017	2016	2015
Expenses										
Governmental activities										
Instruction										
Regular	\$ 3,991,796	\$ 3,406,374	\$ 3,411,118	\$ 3,327,075	\$ 2,780,160	\$ 4,874,791	\$ 6,101,557	\$ 5,821,060	\$ 5,176,819	\$ 5,045,477
Support services:										
School administrative services	3,096,923	3,175,711	2,641,628	2,367,643	2,871,362	1,906,612	1,637,789	1,731,044	1,605,747	1,065,018
General administration	3,411,859	2,705,951	2,175,375	1,587,263	1,300,911	1,354,679	1,260,480	1,262,794	1,225,493	1,609,992
Plant operations and maintenance	163,862	146,982	154,276	129,702	139,959	-	-	240,672	-	-
Interest on long term debt	491,663	491,663	540,588	549,212	551,213	587,043	593,293	572,882	557,947	578,727
Unallocated depreciation	253,450	655,305	680,383	716,543	720,367	738,749	855,859	835,607	811,111	790,141
Total governmental activities expenses	11,409,553	10,581,986	9,603,368	8,677,438	8,363,972	9,461,874	10,448,978	10,464,059	9,377,117	9,089,355
Business-type activities:										
Food service	543,123	492,833	429,171	154,447	350,380	677,144	763,563	629,358	368,813	356,892
Child Care	15,875	31,963	44,385	1,750	34,625	-	-	-	-	-
Total business-type activities expense	558,998	524,796	473,556	156,197	385,005	677,144	763,563	629,358	368,813	356,892
Total charter school expenses	\$ 11,968,551	\$ 11,106,782	\$ 10,076,924	\$ 8,833,635	\$ 8,748,977	\$ 10,139,018	\$ 11,212,541	\$ 11,093,417	\$ 9,745,930	\$ 9,446,247
Program revenues										
Governmental activities:										
Charges for services:										
Operating grants and contributions	\$ 3,236,535	\$ 2,590,311	\$ 1,444,099	\$ 1,081,559	\$ 568,859	\$ 2,295,989	\$ 3,190,716	\$ 2,414,005	\$ 1,942,487	\$ 1,678,122
Capital grants and contributions	-	-	-	-	-	-	-	-	-	-
Total governmental activities program revenues	3,236,535	2,590,311	1,444,099	1,081,559	568,859	2,295,989	3,190,716	2,414,005	1,942,487	1,678,122
Business-type activities:										
Charges for services										
Food service	2,641	3,031	-	-	413	80,527	126,501	110,740	71,676	98,128
Child care	152,561	150,831	89,980	69,138	85,393	-	-	-	-	-
Operating grants and contributions	433,137	422,832	518,081	157,430	254,484	612,640	692,281	558,740	313,175	293,477
Capital grants and contributions	-	-	-	-	-	-	-	-	-	-
Total business type activities program revenues	588,339	576,694	608,061	226,568	340,290	693,167	818,782	669,480	384,851	391,605
Total charter school program revenues	\$ 3,824,874	\$ 3,167,005	\$ 2,052,160	\$ 1,308,127	\$ 909,149	\$ 2,989,156	\$ 4,009,498	\$ 3,083,485	\$ 2,327,338	\$ 2,069,727
Net (expense)/revenue										
Governmental activities	\$ (8,173,018)	\$ (7,991,675)	\$ (8,159,269)	\$ (7,595,879)	\$ (7,795,113)	\$ (7,165,885)	\$ (7,258,262)	\$ (8,050,054)	\$ (7,434,630)	\$ (7,411,233)
Business-type activities	29,341	51,898	134,505	70,371	(44,715)	16,023	55,219	40,122	16,038	34,713
Total charter school-wide net expense	\$ (8,143,677)	\$ (7,939,777)	\$ (8,024,764)	\$ (7,525,508)	\$ (7,839,828)	\$ (7,149,862)	\$ (7,203,043)	\$ (8,009,932)	\$ (7,418,592)	\$ (7,376,520)

JERSEY CITY COMMUNITY CHARTER SCHOOL
County of Hudson New Jersey

J-2

CHANGES IN NET POSITION

Last Ten Fiscal Years

(accrual basis of accounting)

(Unaudited)

	Fiscal Year Ended June 30,									
	2024	2023	2022	2021	2020	2019	2018	2017	2016	2015
General revenues and other changes in net position										
Governmental activities:										
Property taxes levied for general purposes, net	\$ 12,017,765	\$ 8,483,415	\$ 5,329,073	\$ 3,666,389	\$ 2,360,737	\$ 1,690,046	\$ 1,597,932	\$ 1,548,366	\$ 1,629,969	\$ 1,796,194
Grants and contributions	4,070,178	4,796,086	5,278,486	6,185,736	5,682,964	4,765,049	4,952,501	4,843,424	4,686,535	5,089,674
Miscellaneous income	283,366	138,744	295,509	21,179	356,494	19,855	34,808	103,311	100,191	32,144
Transfers	-	-	-	-	(110,000)	-	-	-	-	-
Total governmental activities	<u>16,371,309</u>	<u>13,418,245</u>	<u>10,903,068</u>	<u>9,873,304</u>	<u>8,290,195</u>	<u>6,474,950</u>	<u>6,585,241</u>	<u>6,495,101</u>	<u>6,416,695</u>	<u>6,918,012</u>
Business-type activities:										
Transfers	-	-	-	-	110,000	-	-	-	-	-
Total business-type activities	<u>-</u>	<u>-</u>	<u>-</u>	<u>-</u>	<u>110,000</u>	<u>-</u>	<u>-</u>	<u>-</u>	<u>-</u>	<u>-</u>
Total charter school-wide	<u>\$ 16,371,309</u>	<u>\$ 13,418,245</u>	<u>\$ 10,903,068</u>	<u>\$ 9,873,304</u>	<u>\$ 8,400,195</u>	<u>\$ 6,474,950</u>	<u>\$ 6,585,241</u>	<u>\$ 6,495,101</u>	<u>\$ 6,416,695</u>	<u>\$ 6,918,012</u>
Change in net position										
Governmental activities	\$ 8,198,291	\$ 5,426,570	\$ 2,743,799	\$ 2,277,425	\$ 605,082	\$ (690,935)	\$ (673,021)	\$ (1,554,953)	\$ (1,017,935)	\$ (493,221)
Business-type activities	29,341	51,898	134,505	70,371	(44,715)	16,023	55,219	40,122	16,038	34,713
Total charter school	<u>\$ 8,227,632</u>	<u>\$ 5,478,468</u>	<u>\$ 2,878,304</u>	<u>\$ 2,347,796</u>	<u>\$ 560,367</u>	<u>\$ (674,912)</u>	<u>\$ (617,802)</u>	<u>\$ (1,514,831)</u>	<u>\$ (1,001,897)</u>	<u>\$ (458,508)</u>

Source: Charter School's Records

JERSEY CITY COMMUNITY CHARTER SCHOOL
County of Hudson New Jersey

J-3

Fund Balances - Governmental Funds
Last Ten Fiscal Years
(modified accrual basis of accounting)
(Unaudited)

	Fiscal Year Ended June 30,									
	2024	2023	2022	2021	2020	2019	2018	2017	2016	2015
General Fund										
Reserved	\$ -	\$ -	\$ -	\$ -	\$ -	\$ 1,019,300	\$ 957,963	\$ 945,990	\$ -	\$ -
Unreserved	20,021,792	12,267,548	6,602,153	3,535,949	1,409,129	250,218	121,233	45,285	62,142	286,252
Total general fund	<u>\$ 20,021,792</u>	<u>\$ 12,267,548</u>	<u>\$ 6,602,153</u>	<u>\$ 3,535,949</u>	<u>\$ 1,409,129</u>	<u>\$ 1,269,518</u>	<u>\$ 1,079,196</u>	<u>\$ 991,275</u>	<u>\$ 62,142</u>	<u>\$ 286,252</u>
All Other Governmental Funds										
Reserved	\$ -	\$ -	\$ -	\$ -	\$ -	\$ -	\$ -	\$ -	\$ -	\$ -
Unreserved, reported in:										
Special revenue fund	-	-	-	-	-	-	-	-	-	-
Capital projects fund	-	-	-	-	-	-	-	-	-	-
Debt service fund	-	-	-	-	-	-	-	-	-	-
Permanent fund	-	-	-	-	-	-	-	-	-	-
Total all other governmental funds	<u>\$ -</u>	<u>\$ -</u>	<u>\$ -</u>	<u>\$ -</u>	<u>\$ -</u>	<u>\$ -</u>	<u>\$ -</u>	<u>\$ -</u>	<u>\$ -</u>	<u>\$ -</u>

Source: Charter School's Records

JERSEY CITY COMMUNITY CHARTER SCHOOL
County of Hudson New Jersey

J-4

Changes in Fund Balances - Governmental Funds
Last Ten Fiscal Years
(Unaudited)

Function	Fiscal Year Ended June 30,									
	2024	2023	2022	2021	2020	2019	2018	2017	2016	2015
Revenues										
Local tax levy	\$ 12,017,765	\$ 8,483,415	\$ 5,329,073	\$ 3,666,389	\$ 2,360,737	\$ 1,690,046	\$ 1,597,932	\$ 1,548,366	\$ 1,632,543	\$ 1,796,194
Miscellaneous	313,092	282,774	295,789	56,439	371,603	87,746	34,808	105,240	100,191	35,040
State sources	4,062,553	4,780,102	5,298,808	6,171,740	5,679,660	4,765,049	4,952,501	4,843,424	4,689,109	5,089,674
Federal sources	3,196,721	2,540,166	1,413,325	1,066,952	572,163	747,493	716,637	559,035	623,323	612,589
Private sources	-	-	-	-	-	-	-	-	-	-
Total revenue	19,590,131	16,086,457	12,336,995	10,961,520	8,984,163	7,290,334	7,301,878	7,056,065	7,045,166	7,533,497
Expenditures										
Instruction	3,991,796	3,406,374	3,411,118	3,327,075	2,780,160	2,899,228	2,999,009	3,312,199	3,173,787	3,397,747
Administration	3,417,492	3,567,051	3,153,231	3,110,188	2,964,172	3,105,835	3,177,672	3,121,595	2,964,483	2,921,768
Support Services	3,575,721	2,852,933	2,329,651	1,716,965	1,440,870	326,064	328,452	328,623	354,261	368,319
Capital Outlay	194,736	-	-	-	19,777	86,172	24,861	289,059	38,745	30,635
Debt Service	671,663	691,663	196,375	689,212	681,213	682,713	683,963	571,044	735,426	578,727
Total expenditures	11,851,408	10,518,021	9,090,375	8,843,440	7,886,192	7,100,012	7,213,957	7,622,520	7,266,702	7,297,196
Excess/(deficiency) of revenues over/(under) expenditures	7,738,723	5,568,436	3,246,620	2,118,080	1,097,971	190,322	87,921	(566,455)	(221,536)	236,301
Other Financing Sources/(Uses)										
Bond/Loan Proceeds	-	-	-	-	-	-	-	-	-	-
Prior Years Disallowed Costs	-	-	-	-	-	-	-	-	-	-
Prior Year Accounts Payable Canceled	-	-	-	-	-	-	-	-	-	-
Long term debt	702,278	663,490	736,963	689,212	-	-	-	1,495,588	-	(455,585)
Transfers	(702,278)	(663,490)	(386,963)	(689,212)	-	-	-	-	-	-
	-	-	350,000	-	-	-	-	1,495,588	-	(455,585)
Net change in fund balances	\$ 7,738,723	\$ 5,568,436	\$ 3,596,620	\$ 2,118,080	\$ 1,097,971	\$ 190,322	\$ 87,921	\$ 929,133	\$ (221,536)	\$ (219,284)
Debt service as a percentage of noncapital expenditures	5.76%	6.58%	2.16%	7.79%	8.66%	9.73%	9.51%	7.79%	10.17%	7.96%

Source: Charter School's Records

Note: Noncapital expenditures are total expenditures less capital outlay.

JERSEY CITY COMMUNITY CHARTER SCHOOL
County of Hudson New Jersey

J-5

General Fund Other Local Revenue by Source
Last Ten Fiscal Years
(Unaudited)

Function	Fiscal Year Ended June 30,										#REF!
	2024	2023	2022	2021	2020	2019	2018	2017	2016	2015	
Fund raising	\$ -	\$ -	\$ -	\$ -	\$ -	\$ -	\$ -	\$ -	\$ 490	\$ -	\$ -
Rent	-	-	-	-	-	-	-	-	-	-	-
Prior year's refunds	-	-	-	-	-	-	-	-	3,324	955	2,189
Class trip fees	-	-	-	-	-	-	-	-	930	11,333	1,622
Yearbook sales	-	-	-	-	-	-	-	-	3,698	3,695	2,348
Insurance reimbursements	-	-	-	-	-	-	-	-	3,503	-	-
Donations	-	-	-	-	-	-	-	-	6,299	287	1,671
Interest	-	-	-	-	-	-	-	52	393	939	-
Miscellaneous	283,366	138,744	295,509	21,179	356,494	67,021	72,925	4,647	3,427	1,171	2,531
	-	-	-	-	-	-	-	-	-	-	-
Total other local revenue	#####	\$ 138,744	\$ 295,509	\$ 21,179	\$ 356,494	\$ 67,021	\$ 72,925	\$ 4,699	\$ 22,064	\$ 18,380	\$ 10,361

Source: Charter School's Records

JERSEY CITY COMMUNITY CHARTER SCHOOL
County of Hudson New Jersey

J-10

Ratio of Outstanding Debt By Type
Last Ten Fiscal Years
(Unaudited)

Fiscal Year Ended June 30,	Governmental Activities					Business-Type Activities	Total Charter School	Percentage of Personal Income ^a	Per Capita ^a
	General Obligation Bonds ^b	Capital Leases	Bond Anticipation Notes (BANs)	Long Term Loans	Short Term Loans	Capital Leases			
2015	\$ -	\$ -	\$ -	\$ 8,530,257	\$ -	\$ -	\$ 8,530,257	0.06%	156
2016	-	-	-	8,074,672	-	-	8,074,672	0.05%	144
2017	-	-	-	7,897,193	-	-	7,897,193	0.05%	141
2018	-	-	-	10,225,000	-	-	10,225,000	0.07%	183
2019	-	-	-	10,105,000	-	-	10,105,000	0.06%	169
2020	-	-	-	9,850,000	-	-	9,850,000	0.06%	165
2021	-	-	-	9,710,000	-	-	9,710,000	0.06%	163
2022	-	-	-	9,565,000	-	-	9,565,000	0.06%	160
2023	-	-	-	9,365,000	-	-	9,365,000	0.06%	157
2024	-	-	-	9,185,000	-	-	9,185,000	0.06%	154

Note: Details regarding the Charter School's outstanding debt can be found in the notes to the financial statements.

JERSEY CITY COMMUNITY CHARTER SCHOOL
County of Hudson New Jersey

J-14

Demographic and Economic Statistics
Last Ten Fiscal Years
(Unaudited)

<u>Year</u>	<u>Population ^a</u>	<u>Personal Income ^b</u>	<u>County Per Capita Personal Income ^c</u>	<u>Unemployment Rate ^d</u>
2015	266,286	\$ 14,583,951,648	\$ 54,768	6.60%
2016	267,446	14,973,231,756	55,986	6.60%
2017	270,753	15,158,377,458	55,986	6.60%
2018	270,753	15,158,377,458	55,986	4.70%
2019	270,753	16,143,106,119	59,623	3.00%
2020	270,753	16,143,106,119	59,623	3.00%
2021	270,753	16,143,106,119	59,623	3.00%
2022	270,753	16,143,106,119	59,623	3.00%
2023	270,753	16,143,106,119	59,623	3.00%
2024	270,753	16,143,106,119	59,623	3.00%

Source:

^a Population information provided by the NJ Dept of Labor and Workforce Development

^b Personal income has been estimated based upon the municipal population and per capita personal income presented

^c Personal capital income by municipality estimated based upon the 2000 Cesus published by the US Bureau of Economic Analysis.

^d Unemployment data provided by the NJ Dept of Labor and Workforce Development

JERSEY CITY COMMUNITY CHARTER SCHOOL
County of Hudson New Jersey

J-15

Principal Employers
Current Year
(Unaudited)

<u>Employer</u>	2024		
	a		a
	Employees	Rank [Optional]	Percentage of Total Municipal Employment
HealthCare Staffing and Consulting	2,000	1	1.67%
Deutsche Bank Trust Co., NJ Ltd	1,833	2	1.53%
Insurance Service Office, Inc.	1,217	3	1.01%
Fleet, NJ Company Development Corp.	1,000	4	0.83%
Equiserve, Inc.	850	5	0.71%
Provident Bank	850	6	0.71%
Bon Secours NJ Health System, Inc.	818	7	0.68%
JP Morgan Chase Bank	600	8	0.50%
Port Authority Trans-Hudson, Inc.	600	9	0.50%
Saint Francis Hospital, Inc.	600	10	0.50%
National Discount Broker Group, Inc.	568	11	0.47%
Lehman Commercial Paper, Inc.	525	12	0.44%
US News World Report, LLC	500	13	0.42%
Top Job Personnel, Inc.	500	14	0.42%
	<u>12,461</u>		<u>10.39%</u>

Source: Web Site: <http://www.city-data.com/us-cities/The-Northeast/Jersey-City-Economy.html>

JERSEY CITY COMMUNITY CHARTER SCHOOL
County of Hudson New Jersey

J-16

Full-Time Equivalent Charter School Employees by Function/Program
Last Ten Fiscal Years
(Unaudited)

<u>Function/Program</u>	Fiscal Year Ended June 30,									
	<u>2024</u>	<u>2023</u>	<u>2022</u>	<u>2021</u>	<u>2020</u>	<u>2019</u>	<u>2018</u>	<u>2017</u>	<u>2016</u>	<u>2015</u>
Instruction										
Regular	59	59	59	59	59	59	59	59	59	59
Special education	3	3	3	3	3	3	3	3	2	2
Other instruction	1	1	1	1	1	1	1	1	1	1
Support Services:										
General administration	6	6	6	6	6	6	6	6	6	6
Administrative Information Technology	1	1	1	1	1	1	1	1	1	1
Plant operations and maintenance	7	7	7	7	7	7	7	7	7	7
Other support services	5	5	5	5	5	5	5	5	5	5
Food Service	5	5	5	5	5	5	5	7	4	5
Total	<u><u>87</u></u>	<u><u>87</u></u>	<u><u>87</u></u>	<u><u>87</u></u>	<u><u>87</u></u>	<u><u>87</u></u>	<u><u>87</u></u>	<u><u>89</u></u>	<u><u>85</u></u>	<u><u>86</u></u>

Source: Charter School Personnel Records

JERSEY CITY COMMUNITY CHARTER SCHOOL
County of Hudson New Jersey

J-17

Operating Statistics

**Last Ten Fiscal Years
(Unaudited)**

Fiscal Year	Enrollment	Operating Expenditures ^a	Cost Per Pupil	Percentage Change	Teaching Staff ^b	Pupil/Teacher Ratio		Average Daily Enrollment (ADE) ^c	Average Daily Attendance (ADA) ^c	% Change in Average Daily Enrollment	Student Attendance Percentage
						Kindergarten	Elementary				
2015	586	\$ 6,687,834	\$ 11,413	-8.31%	56	1:11	1:11	579	572	0.00%	98.79%
2016	571	7,091,927	12,420	8.83%	56	1:11	1:11	571	548	-1.38%	95.97%
2017	560	7,470,976	13,341	7.41%	59	1:11	1:11	560	538	-1.93%	96.07%
2018	574	7,204,885	12,552	-5.91%	59	1:11	1:11	574	551	2.50%	95.99%
2019	568	7,197,757	12,672	0.96%	59	1:11	1:11	568	541	-1.05%	95.25%
2020	580	7,866,415	13,563	7.03%	63	1:11	1:11	580	551	2.11%	95.00%
2021	580	8,843,440	15,247	12.42%	63	1:11	1:11	580	551	0.00%	95.00%
2022	560	9,090,375	16,233	6.46%	63	1:11	1:11	580	551	0.00%	95.00%
2023	575	10,518,021	18,292	12.69%	63	1:11	1:11	575	546	-0.86%	94.96%
2024	574	11,656,672	20,308	11.02%	63	1:11	1:11	575	546	0.00%	95.00%

Sources: Charter School records

Note: Enrollment based on annual June Charter School count.

a Operating expenditures esual total expenditures less debt service and capital outlay.

b Teaching staff includes only full-time esuivalents of certificated staff.

c Average daily enrollment and average daily attendance are obtained from the School Register Summary (SRS).

JERSEY CITY COMMUNITY CHARTER SCHOOL
County of Hudson New Jersey

J-18

School Building Information
Last Ten Fiscal Years
(Unaudited)

	Fiscal Year Ended June 30,									
	2024	2023	2022	2021	2020	2019	2018	2017	2016	2015
Square Feet	42,000	42,000	42,000	42,000	42,000	42,000	42,000	42,000	42,000	42,000
Capacity (students)	594	594	594	594	594	594	594	594	594	594
Enrollment	574	575	580	580	580	568	574	560	571	586

Source: School Records

JERSEY CITY COMMUNITY CHARTER SCHOOL
County of Hudson New Jersey

J-19

Schedule of Required Maintenance Expenditures
By School Facility
Last Ten Fiscal Years
(Unaudited)

2015	\$ 451,999
2016	390,607
2017	395,509
2018	397,659
2019	392,844
2020	625,022
2021	645,592
2022	866,716
2023	866,716
2024	1,040,797
	-
Total	\$ 6,073,461

* School facilities as defined under EFCFA.
(N.J.A.C. 6A:26-1.2 and N.J.A.C. 6A:26A-1.3)

Source: Charter School records

JERSEY CITY COMMUNITY CHARTER SCHOOL
County of Hudson New Jersey

J-20

Insurance Schedule

June 30, 2024
(Unaudited)

	Coverage
Commercial property and general liability:	
Property:	
Blanket building and contents	\$ 500,000,000
Electronic Data Processing	125,000
Boiler & Machinery, property damage and personal expense	100,000,000
Comprehensive General Liability:	
Bodily injury and property damage	11,000,000
Personal injury and advertising injury	11,000,000
Premises medical payments per each occurrence	10,000
Sexual abuse	11,000,000
Products	11,000,000
Workers Compensation:	
Excess liability - each accident	3,000,000
Excess liability - each employee	3,000,000
Excess liability - policy limit	3,000,000
Errors and Omissions:	
Coverage limit	11,000,000
Deductible per claim	10,000
Automobile Liability	11,000,000

JERSEY CITY COMMUNITY CHARTER SCHOOL
County of Hudson New Jersey

J-21

Charter School Performance Framework Financial Indicators
New Term Indicators

June 30, 2024
(Unaudited)

	<u>2024</u>	<u>2023</u>	<u>2022</u>
Cash	\$ 18,557,156	\$ 10,542,058	\$ 6,982,148
Current assets	1,064,953	3,862,035	2,038,063
Capital assets, net	<u>1,226,965</u>	<u>1,285,679</u>	<u>1,940,984</u>
Total assets	<u>20,849,074</u>	<u>15,689,772</u>	<u>10,961,195</u>
Current liabilities	(1,556,955)	735,088	1,017,034
Long term liabilities	<u>8,995,000</u>	<u>9,185,000</u>	<u>9,365,000</u>
Total liabilities	<u>7,438,045</u>	<u>9,920,088</u>	<u>10,382,034</u>
Net position	<u><u>\$ 13,411,029</u></u>	<u><u>\$ 5,769,684</u></u>	<u><u>\$ 579,161</u></u>
Total revenue	\$ 20,196,183	\$ 16,653,686	\$ 13,305,508
Total expenses	<u>(11,997,881)</u>	<u>(11,136,112)</u>	<u>(10,157,629)</u>
Change in net position	<u><u>\$ 8,198,302</u></u>	<u><u>\$ 5,517,574</u></u>	<u><u>\$ 3,147,879</u></u>
Depreciation expense	\$ 253,450	\$ 655,305	\$ 680,383
Interest expense	491,663	491,663	540,588
Principal payments	180,000	200,000	145,000
Interest payments	491,663	491,663	540,588
Final average daily enrollment	575	575	560
March 30th budgeted enrollment	594	594	594

	<u>2024</u>	<u>2023</u>	<u>2022</u>	<u>Three Year Cumulative</u>
NEAR TERM INDICATORS:				
Current ratio	(12.60)	19.60	8.87	15.86
Unrestricted days cash	564.55	345.53	250.89	1,160.97
Enrollment variance	97%	97%	94%	96%
Default	No	No	No	No

Source: Charter School Records

JERSEY CITY COMMUNITY CHARTER SCHOOL
County of Hudson New Jersey

J-22

Charter School Performance Framework Financial Indicators
Sustainability Indicators

June 30, 2024
(Unaudited)

	<u>2024</u>	<u>2023</u>	<u>2022</u>
Cash	\$ 18,557,156	\$ 10,542,058	\$ 6,982,148
Current assets	1,064,953	3,862,035	2,038,063
Capital assets, net	1,226,965	1,285,679	1,940,984
Total assets	<u>20,849,074</u>	<u>15,689,772</u>	<u>10,961,195</u>
Current liabilities	(1,556,955)	735,088	1,017,034
Long term liabilities	8,995,000	9,185,000	9,365,000
Total liabilities	<u>7,438,045</u>	<u>9,920,088</u>	<u>10,382,034</u>
Net position	<u>\$ 13,411,029</u>	<u>\$ 5,769,684</u>	<u>\$ 579,161</u>
Total revenue	\$ 20,196,183	\$ 16,653,686	\$ 13,305,508
Total expenses	(11,997,881)	(11,136,112)	(10,157,629)
Change in net position	<u>\$ 8,198,302</u>	<u>\$ 5,517,574</u>	<u>\$ 3,147,879</u>
Depreciation expense	\$ 253,450	\$ 655,305	\$ 680,383
Interest expense	491,663	491,663	540,588
Principal payments	180,000	200,000	145,000
Interest payments	491,663	491,663	540,588
Final average daily enrollment	580	575	560
March 30th budgeted enrollment	594	594	594

	<u>2024</u>	<u>2023</u>	<u>2022</u>	<u>Three Year Cumulative</u>
SUSTAINABILITY INDICATORS:				
Total margin	40.6%	33.1%	23.7%	33.6%
Debt to asset	0.43	0.59	0.85	0.58
Cash flow	\$ 8,015,098	\$ 3,559,910	\$ 3,207,395	\$ 14,782,403
Debt service coverage ratio	13.32	9.64	6.37	9.750

Source: Charter School Records

Single Audit Section

Olugbenga Olabintan

Certified Public Accountant/Consultant

137 Camden Street, Suite #3
Newark, NJ 07103

Tel: (201) 230-7518
Fax: (973) 368-8268
E-mail: oolabintan@aol.com

K-1

Independent Auditor's Report on Internal Control over Financial Reporting and on Compliance and Other Matters Based on an Audit of Financial Statements Performed in Accordance with *Government Auditing Standards*

The Honorable Chairperson and
Members of the Board of Trustees
Jersey City Community Charter School
County of Hudson
Jersey City, New Jersey

We have audited, in accordance with auditing standards generally accepted in the United States of America and the standards applicable to financial audits contained in *Government Auditing Standards*, issued by the Comptroller General of the United States *and audit requirements as prescribed by the Office of School Finance, Department of Education, State of New Jersey*, the financial statements of the governmental activities, each major fund, and the aggregate remaining fund information of Jersey City Community Charter School, in the County of Hudson, State of New Jersey ("the Charter School"), as of and for the year ended June 30, 2024, and the related notes to the financial statements, which collectively comprise the Charter School's basic financial statements, and have issued our report thereon, dated March 19, 2025.

Internal Control over Financial Reporting

In planning and performing our audit of the financial statements, we considered the Charter School's internal control over financial reporting (internal control) to determine the audit procedures that are appropriate in the circumstances for the purpose of expressing our opinions on the financial statements, but not for the purpose of expressing an opinion on the effectiveness of the Charter School's internal control. Accordingly, we do not express an opinion on the effectiveness of the Charter School's internal control.

A *deficiency in internal control* exists when the design or operation of a control does not allow management or employees, in the normal course of performing their assigned functions, to prevent, or detect and correct, misstatements on a timely basis. A *material weakness* is a deficiency, or a combination of deficiencies, in internal control, such that there is a reasonable possibility that a material misstatement of the entity's financial statements will not be prevented, or detected and corrected on a timely basis. A *significant deficiency* is a deficiency, or a combination of deficiencies, in internal control that is less severe than a material weakness, yet important enough to merit attention by those charged with governance.

Our consideration of internal control was for the limited purpose described in the first paragraph of this section and was not designed to identify all deficiencies in internal control that might be material weaknesses or significant deficiencies. Given these limitations, during our audit we did not identify any deficiencies in internal control that we consider to be material weaknesses. However, material weaknesses may exist that have not been identified.

Compliance and Other Matters

As part of obtaining reasonable assurance about whether the Charter School's financial statements are free of material misstatement, we performed tests of its compliance with certain provisions of laws, regulations, contracts, and grant agreements, noncompliance with which could have a direct and material effect on the determination of financial statement amounts. However, providing an opinion on compliance with those provisions was not an objective of our audit, and accordingly, we do not express such an opinion. The results of our tests disclosed no instances of noncompliance or other matters that are required to be reported under *Government Auditing Standards and audit requirements as prescribed by the Office of School Finance, Department of Education, State of New Jersey*.

Purpose of this Report

The purpose of this report is solely to describe the scope of our testing of internal control and compliance and the results of that testing, and not to provide an opinion on the effectiveness of the Charter School's internal control or on compliance. This report is an integral part of an audit performed in accordance with *Government Auditing Standards and audit requirements as prescribed by the Office of School Finance, Department of Education, State of New Jersey* in considering the Charter School's internal control and compliance. Accordingly, this communication is not suitable for any other purpose.

Olugbenga Olabintan, CPA

March 19, 2025
Newark, New Jersey

OLUGBENGA OLABINTAN
Certified Public Accountant/Consultant

A handwritten signature in black ink, appearing to read 'Olugbenga Olabintan', with a stylized flourish at the end.

Olugbenga Olabintan, CPA
Licensed Public School Accountant
No. 20CS00230200

Olugbenga Olabintan

Certified Public Accountant/Consultant

137 Camden Street, Suite #3
Newark, NJ 07103

Tel: (201) 230-7518
Fax: (973) 368-8268
E-mail: oolabintan@aol.com

K-2

Independent Auditors' Report on Compliance for Each Major Federal and State Program and Report on Internal Control over Compliance Required by the Uniform Guidance and *State of New Jersey Department of Treasury Circular 15-08-OMB*

The Honorable Chairperson and
Members of the Board of Trustees
Jersey City Community Charter School
County of Hudson,
Jersey City, New Jersey

Report on Compliance for Each Major Federal and State Program

Opinion on Each Major Federal and State Program

We have audited Jersey City Community Charter School, in the County of Hudson, State of New Jersey ("the Charter School") compliance with the types of requirements described in the OMB Compliance Supplements and *State of New Jersey Department of Treasury Circular 15-08-OMB Compliance Supplement* that could have a direct and material effect on each of the Charter School's major federal and state programs for the year ended June 30, 2024. The Charter School's major federal and state programs are identified in the summary of auditor's results section of the accompanying schedule of findings and questioned costs.

In our opinion, the Charter School complied, in all material respects, with the compliance requirements referred to above that could have a direct and material effect on each of its major federal and state programs for the fiscal year ended June 30, 2024.

Basis for Opinion on Each Major Federal and State Program

We conducted our audit of compliance in accordance with auditing standards generally accepted in the United States of America; the standards applicable to financial audits contained in *Government Auditing Standards*, issued by the Comptroller General of the United States; audit requirements prescribed by the Office of School Finance, Department of Education, State of New Jersey; audit requirements of Title 2 U.S. Code of Federal Regulations Part 200, *Uniform Administrative Requirements, Cost Principles, and Audit Requirements for Federal Awards* (Uniform Guidance) and audit requirements of New Jersey OMB Circular 15-08, Single Audit Policy for Recipients of Federal Grants, State Grants and State Aid.

Those standards, the Uniform Guidance, State of New Jersey Department of Treasury Circular 15-08-OMB and *audit requirements as prescribed by the Office of School Finance, Department of Education, State of New Jersey* require that we plan and perform the audit to obtain reasonable assurance about whether noncompliance with the types of compliance requirements referred to above that could have a direct and material effect on a major federal or state program occurred. Our responsibilities under those standards and the Uniform Guidance are further described in the Auditor's Responsibilities for the Audit of Compliance section of our report.

We are required to be independent of the Charter School and to meet our other ethical responsibilities, in accordance with relevant ethical requirements relating to our audit. We believe that the audit evidence we have obtained is sufficient and appropriate to provide a basis for our opinion on compliance for each major federal and state program. Our audit does not provide a legal determination of the Charter School's compliance with the compliance requirements referred to above.

Responsibilities of Management for Compliance

Management is responsible for compliance with the requirements referred to above and for the design, implementation, and maintenance of effective internal control over compliance with the requirements of laws, statutes, regulation, rules, and provisions of contracts or grant agreements applicable to the Charter School's federal and state programs.

Auditor's Responsibilities for the Audit of Compliance

Our objectives are to obtain reasonable assurance about whether material noncompliance with the compliance requirements referred to above occurred, whether due to fraud or error, and express an opinion on the Charter School's compliance based on our audit. Reasonable assurance is a high level of assurance but is not absolute assurance and therefore is not a guarantee that an audit conducted in accordance with generally accepted auditing standards, Government Auditing Standards, audit requirements prescribed by the Office of School Finance, Department of Education, State of New Jersey, U.S. Uniform Guidance and New Jersey OMB Circular 15-08 will always detect material noncompliance when it exists. The risk of not detecting material noncompliance resulting from fraud is higher than for that resulting from error, as fraud may involve collusion, forgery, intentional omission, misrepresentation, or the override of internal control. Noncompliance with the compliance requirements referred to above is considered material if there is a substantial likelihood that, individually or in the aggregate, it would influence the judgment made by a reasonable user of the report on compliance about the Charter School's compliance with the requirements of each major federal and state program as a whole.

In performing an audit in accordance with generally accepted auditing standards, Government Auditing Standards, audit requirements prescribed by the Office of School Finance, Department of Education, State of New Jersey, U.S. Uniform Guidance, and New Jersey OMB Circular 15-08, we:

- Exercise professional judgement and maintain professional skepticism throughout the audit.

- Identify and assess the risks of material noncompliance, whether due to fraud or error, and design and perform audit procedures responsive to those risks. Such procedures include examining, on a test basis, evidence regarding the Charter School's compliance with the compliance requirements referred to above and performing such other procedures as we considered necessary in the circumstances.
- Obtain an understanding of the Charter School's internal control over compliance relevant to the audit in order to design audit procedures that are appropriate in the circumstances and to test and report on internal control over compliance in accordance with the U.S. Uniform Guidance and New Jersey OMB Circular 15-08, but not for the purpose of expressing an opinion on the effectiveness of the Charter School's internal control over compliance. Accordingly, no such opinion is expressed.

We are required to communicate with those charged with governance regarding, among other matters, the planned scope and timing of the audit and any significant deficiencies and material weaknesses in internal control over compliance that we identified during the audit.

Report on Internal Control over Compliance

A deficiency in internal control over compliance exists when the design or operation of a control over compliance does not allow management or employees, in the normal course of performing their assigned functions, to prevent, or detect and correct, noncompliance with a type of compliance requirement of a federal or state program on a timely basis. A material weakness in internal control over compliance is a deficiency, or combination of deficiencies, in internal control over compliance, such that there is a reasonable possibility that material noncompliance with a type of compliance requirement of a federal or state program will not be prevented, or detected and corrected, on a timely basis. A significant deficiency in internal control over compliance is a deficiency, or a combination of deficiencies, in internal control over compliance with a type of compliance requirement of a federal or state program that is less severe than a material weakness in internal control over compliance, yet important enough to merit attention by those charged with governance.

Our consideration of internal control over compliance was for the limited purpose described in the Auditor's Responsibilities for the Audit of Compliance section above and was not designed to identify all deficiencies in internal control over compliance that might be material weaknesses or significant deficiencies in internal control over compliance. Given these limitations, during our audit we did not identify any deficiencies in internal control over compliance that we consider to be material weaknesses, as defined above. However, material weaknesses or significant deficiencies in internal control over compliance may exist that were not identified.

Our audit was not designed for the purpose of expressing an opinion on the effectiveness of internal control over compliance. Accordingly, no such opinion is expressed.

The purpose of this report on internal control over compliance is solely to describe the scope of our testing of internal control over compliance and the results of that testing based on the requirements of U.S. Uniform Guidance, State of New Jersey Department of Treasury Circular 15-08-OMB and *audit requirements as prescribed by the Office of School Finance, Department of Education, State of New Jersey*. Accordingly, this report is not suitable for any other purpose.

Olugbenga Olabintan, CPA

March 19, 2025
Newark, New Jersey

OLUGBENGA OLABINTAN
Certified Public Accountant/Consultant

A handwritten signature in black ink, appearing to read 'Olugbenga Olabintan', with a stylized flourish at the end.

Olugbenga Olabintan, CPA
Licensed Public School Accountant
No. 20CS00230200

JERSEY CITY COMMUNITY CHARTER SCHOOL

Schedule of Expenditures of Federal Awards

Year ended June 30, 2024

Federal Grant/ Pass-Through Grantor/ Program Title	Assistance Listing (AL) Number	Federal Award Identification Number	Grant Period	Award Amount	(Accounts Receivable) at June 30, 2023	Deferred Revenue at June 30, 2023	Due to Grantor at June 30, 2023	Adjustments	Carryover (Walkover) Amount	Cash Received	Budgetary Expenditures	Repayment of Prior Years' Balances	(Accounts Receivable) at June 30, 2024	Deferred Revenue at June 30, 2024	Due to Grantor at June 30, 2024	
General Fund:																
U.S. Department of Health and Human Services																
Passed-Through State Department of Education																
Special Education Medicaid Initiative - SEMI	93.778	2005NJ5MAP	7/1/23-6/30/24	\$ 7,625	\$ -	\$ -	\$ -	\$ -	\$ -	\$ 7,625	\$ (7,625)	\$ -	\$ -	\$ -	\$ -	
Total General Fund/U.S. Department of Health & Human Services					-	-	-	-	-	7,625	(7,625)	-	-	-	-	
Special Revenue Fund:																
U.S. Department of Education:																
Passed-Through State Department of Education																
Title I Part A - FY 2023-2024	84.010A	S010A240030	7/1/23-9/30/24	420,788	-	-	-	-	-	331,797	(378,927)	-	(47,130)	-	-	
Title I Part A - FY 2022-2023	84.010A	S010A230030	7/1/22-9/30/23	460,660	(302,472)	-	-	-	-	302,472	-	-	-	-	-	
Title I SIA - FY 2021-2022	84.010A	S010A200030	7/1/21-9/30/22	70,300	(17,831)	-	-	17,831	-	-	-	-	-	-	-	
Subtotal - Assistance Listing # 84.101A					(320,303)	-	-	17,831	-	634,269	(378,927)	-	(47,130)	-	-	
Title II A - FY 2023-2024	84.367A	S367A240029	7/1/23-9/30/24	67,388	-	-	-	-	-	23,222	(43,818)	-	(20,596)	-	-	
Title II A - FY 2022-2023	84.367A	S367A230029	7/1/22-9/30/23	42,193	(36,492)	-	-	-	-	36,492	-	-	-	-	-	
Subtotal - Assistance Listing # 84.367A					(36,492)	-	-	-	-	59,714	(43,818)	-	(20,596)	-	-	
Title IV A - FY 2023-2024	84.424A	S424A220031	7/1/23-9/30/24	21,116	-	-	-	-	-	3,612	(10,612)	-	(7,000)	-	-	
Title IV A - FY 2022-2023	84.424A	S424A220031	7/1/22-9/30/23	32,486	(11,370)	-	-	-	-	11,370	-	-	-	-	-	
Subtotal - Assistance Listing # 84.424A					(11,370)	-	-	-	-	14,982	(10,612)	-	(7,000)	-	-	
IDEA Part B - FY 2023-2024	84.027	H027A220100	7/1/23-9/30/24	137,181	-	-	-	-	-	137,181	(137,181)	-	-	-	-	
IDEA Preschool - FY 2023-2024	84.173	H173A220114	7/1/23-9/30/24	4,146	-	-	-	-	-	2,496	(4,146)	-	(1,650)	-	-	
ARP IDEA Basic - FY 2023-2024	84.027X	H027X210100	7/1/22-9/30/23	120,424	(771)	-	-	-	-	771	-	-	-	-	-	
ARP IDEA Preschool - FY 2023-2024	84.173X	H173X210114	7/1/22-9/30/23	7,526	(3,463)	-	-	-	-	3,463	-	-	-	-	-	
Subtotal - Special Education Cluster					(4,234)	-	-	-	-	143,911	(141,327)	-	(1,650)	-	-	
CRRSA-ESSER II	84.425D	S425D210027	3/13/20-9/30/23	1,458,764	(1,260,522)	-	-	299,959	-	1,144,541	(183,978)	-	-	-	-	
CRRSA-Learning Acceleration	84.425D	S425D210027	3/13/20-9/30/23	93,616	(93,616)	-	-	-	-	93,616	-	-	-	-	-	
CRRSA-Mental Health	84.425D	S425D210027	3/13/20-9/30/23	45,000	(5,000)	-	-	-	-	5,000	-	-	-	-	-	
ARP ESSER III	84.425U	S425U210027	3/13/20-9/30/24	3,278,477	(297,476)	-	-	-	-	1,282,126	(2,362,744)	-	(1,378,094)	-	-	
ARP ESSER III - Accelerated Learning Coaching and Educator Support Grant	84.425U	S425U210027	3/13/20-9/30/24	71,495	(52,749)	-	-	8,944	-	71,495	(27,690)	-	-	-	-	
ARP ESSER III - Evidence-Based Comprehensive Beyond the School Day Grant	84.425U	S425U210027	3/13/20-9/30/24	40,000	-	-	-	-	-	40,000	(40,000)	-	-	-	-	
ARP ESSER III - NJTSS Mental Health Support Staffing Grant	84.425U	S425U210027	3/13/20-9/30/24	45,000	(43,500)	-	-	-	-	43,500	-	-	-	-	-	
ARP Homeless																
Subtotal - Elementary and Secondary School Education Emergency Relief (ESSER) Funds					(1,752,863)	-	-	308,903	-	2,680,278	(2,614,412)	-	(1,378,094)	-	-	
Total for U.S. Department of Education, Pass-Through Programs					(2,125,262)	-	-	326,734	-	3,533,154	(3,189,096)	-	(1,454,470)	-	-	
Total Special Revenue/U.S. Department of Education					6,416,560	(2,125,262)	-	-	326,734	-	3,533,154	(3,189,096)	-	(1,454,470)	-	-
Enterprise Fund:																
U.S. Department of Agriculture																
Passed-Through New Jersey Dept of Agriculture																
National school lunch program	10.555	241NJ304N1099	7/1/23-6/30/24	322,163	-	-	-	-	-	262,586	(322,163)	-	(59,577)	-	-	
National school lunch program	10.555	231NJ304N1099	7/1/22-6/30/23	310,739	(20,882)	-	-	-	-	20,882	-	-	-	-	-	
Healthy, Hunger-Free Kids Act	10.555	241NJ304N1099	7/1/23-6/30/24	6,422	-	-	-	-	-	5,234	(6,422)	-	(1,188)	-	-	
National school lunch program	10.555	231NJ304N1099	7/1/22-6/30/23	6,045	(406)	-	-	-	-	406	-	-	-	-	-	
School Programs Emergency Operational Costs Reimbursement Program	10.555	241NJ304N1099	7/1/23-6/30/24	18,192	-	-	-	-	-	18,192	(18,192)	-	-	-	-	
Subtotal Assistance Listing # 10.555					663,561	(21,288)	-	-	-	307,300	(346,777)	-	(60,765)	-	-	
National School breakfast program	10.553	241NJ304N1099	7/1/23-6/30/24	77,143	-	-	-	-	-	62,943	(77,143)	-	(14,200)	-	-	
National School breakfast program	10.553	231NJ304N1099	7/1/22-6/30/23	58,017	(3,431)	-	-	-	-	3,431	-	-	-	-	-	
Subtotal Assistance Listing # 10.553					135,160	(3,431)	-	-	-	66,374	(77,143)	-	(14,200)	-	-	
Summer Program	10.559	241NJ304N1099	7/1/23-6/30/24	653	-	-	-	-	-	653	(653)	-	-	-	-	
Subtotal Assistance Listing # 10.559					653	-	-	-	-	653	(653)	-	-	-	-	
Total Enterprise Fund/U.S. Department of Agriculture/Total Child Nutrition Cluster					799,374	(24,719)	-	-	-	374,327	(424,573)	-	(74,965)	-	-	
Total					\$ (2,149,981)	\$ -	\$ -	\$ 326,734	\$ -	\$ 3,915,106	\$ -	\$ -	\$ (1,529,435)	\$ -	\$ -	
Total Expenditures of Federal Awards											(3,621,294)					

The accompanying Notes to Schedules of Expenditures of Awards and Financial Assistance are an integral part of this schedule.

JERSEY CITY COMMUNITY CHARTER SCHOOL

Schedule of Expenditures of State Awards

Year ended June 30, 2024

State Grantor/Program Title	Grant or State Project Number	Grant Period	Award Amount	(Accounts Receivable) at June 30, 2023	Deferred Revenue at June 30, 2023	Due to Grantor at June 30, 2023	Adjustments	Carryover (Walkover) Amount	Cash Received	Budgetary Expenditures	Repayment of Prior Years' Balances	(Accounts Receivable) at June 30, 2024	Deferred Revenue at June 30, 2024	Due to Grantor at June 30, 2024
State Department of Education														
General Fund:														
Equalization Aid	24-495-034-5124-078	7/1/23-6/30/24	\$ 9,383,470	\$ -	\$ -	\$ -	\$ -	\$ -	\$ 9,529,790	\$ (9,383,470)	-	\$ (137,128)	\$ -	\$ 9,192
Equalization Aid	23-495-034-5121-078	7/1/22-6/30/23	11,419,441	(70,131)	-	274,456	-	-	70,131	-	(274,456)	-	-	-
Special Education Aid	24-495-034-5124-089	7/1/23-6/30/24	224,940	-	-	-	-	-	224,940	(224,940)	-	-	-	-
Security Aid	24-495-034-5124-084	7/1/23-6/30/24	294,282	-	-	-	-	-	294,282	(294,282)	-	-	-	-
TPAF/FICA Reimbursements	24-495-034-5094-003	7/1/23-6/30/24	185,156	-	-	-	-	-	160,131	(185,156)	-	(25,025)	-	-
TPAF/FICA Reimbursements	23-495-034-5094-003	7/1/22-6/30/23	178,076	(81,253)	-	-	-	-	81,253	-	-	-	-	-
On-Behalf TPAF Post Retirement Medical Contribution	24-495-034-5094-001	7/1/23-6/30/24	255,684	-	-	-	-	-	255,684	(255,684)	-	-	-	-
On-Behalf TPAF Pension Contribution - Normal & NCGI	24-495-034-5094-002	7/1/23-6/30/24	939,450	-	-	-	-	-	939,450	(939,450)	-	-	-	-
On-Behalf TPAF Pension Contribution - Long-Term Disability Insurance	24-495-034-5094-004	7/1/23-6/30/24	558	-	-	-	-	-	558	(558)	-	-	-	-
Total General Fund/State Department of Education				<u>(151,384)</u>	<u>-</u>	<u>274,456</u>	<u>-</u>	<u>-</u>	<u>11,556,219</u>	<u>(11,283,540)</u>	<u>(274,456)</u>	<u>(162,153)</u>	<u>-</u>	<u>9,192</u>
Special Revenue Fund:														
School Climate Change Pilot Grant	Not Available	04/01/23-06/30/23		-	6,600	-	-	-	-	-	-	-	6,600	-
Charter & Renaissance School Project Emergent and Capital Maintenance Funds	24-495-034-5120-071	7/1/23-6/30/24	175,883	-	-	-	-	-	175,883	-	-	-	#####	-
Total Special Revenue Fund				<u>-</u>	<u>6,600</u>	<u>-</u>	<u>-</u>	<u>-</u>	<u>175,883</u>	<u>-</u>	<u>-</u>	<u>-</u>	<u>#####</u>	<u>-</u>
Total New Jersey State Department of Education				<u>(151,384)</u>	<u>6,600</u>	<u>274,456</u>	<u>-</u>	<u>-</u>	<u>11,732,102</u>	<u>(11,283,540)</u>	<u>(274,456)</u>	<u>(162,153)</u>	<u>#####</u>	<u>9,192</u>
State Department of Agriculture														
Enterprise Fund:														
State school lunch program	24-100-010-3350-023	7/1/23-6/30/24	5,566	-	-	-	-	-	4,537	(5,566)	-	(1,029)	-	-
State school lunch program	23-100-010-3350-023	7/1/22-6/30/23	5,239	(352)	-	-	-	-	352	-	-	-	-	-
State school breakfast program	24-100-010-3350-023	7/1/23-6/30/24	2,998	-	-	-	-	-	2,446	(2,998)	-	(552)	-	-
State school breakfast program	23-100-010-3350-023	7/1/22-6/30/23	2,998	(136)	-	-	-	-	136	-	-	-	-	-
Total Enterprise Fund/State Department of Agriculture				<u>(488)</u>	<u>-</u>	<u>-</u>	<u>-</u>	<u>-</u>	<u>7,471</u>	<u>(8,564)</u>	<u>-</u>	<u>(1,581)</u>	<u>-</u>	<u>-</u>
Total State Financial Assistance				<u>\$ (151,872)</u>	<u>\$ 6,600</u>	<u>\$ 274,456</u>	<u>\$ -</u>	<u>\$ -</u>	<u>\$ 11,739,573</u>	<u>(11,292,104)</u>	<u>\$ (274,456)</u>	<u>\$ (163,734)</u>	<u>#####</u>	<u>\$ 9,192</u>
Less Amounts Not Subject to Single Audit:														
On-Behalf TPAF Post Retirement Medical Contribution	24-495-034-5094-001									255,684				
On-Behalf TPAF Pension Contribution - Normal & NCGI	24-495-034-5094-002									939,450				
On-Behalf TPAF Pension Contribution - Long-Term Disability Insurance	24-495-034-5094-004									558				
Total Expenditures of State Financial Assistance Subject to Single Audit										<u>\$ (10,096,412)</u>				

The accompanying Notes to Schedules of Expenditures of Awards and Financial Assistance are an integral part of this schedule.

**JERSEY CITY COMMUNITY CHARTER SCHOOL
(County of Hudson)**

**Notes to Schedules of Expenditures of Federal Awards and State Financial Assistance
Year Ended June 30, 2024**

1. General

The accompanying schedules of expenditures of federal awards and state financial assistance present the activity of all expenditures of federal awards and state financial assistance of the Charter School. All federal and state awards received directly from federal and state agencies, as well as federal awards and state financial assistance passed through other government agencies is included on the schedule of expenditures of federal awards and state financial assistance.

2. Basis of Accounting

The accompanying schedules of expenditures of federal awards and state financial assistance are presented on the budgetary basis of accounting with the exception of programs recorded in the enterprise fund, which are presented using the accrual basis of accounting. These bases of accounting are described in Note 1 to the Charter School's basic financial statements. The information in these schedules is presented in accordance with the requirements of *Title 2 U.S. Code of Federal Regulations (CFR) Part 200, Uniform Administrative Requirements, Cost Principles, and Audit Requirements for Federal Awards* (Uniform Guidance) and the provisions of New Jersey Department of the Treasury Circular Letter 15-08 OMB, *Single Audit Policy for Recipients of Federal Grants, State Grants and State Aid*. Therefore, some amounts presented in the schedules may differ from amounts presented in, or used in the preparation of, the basic financial statements.

3. Relationship to Basic Financial Statements

Amounts reported in the accompanying schedules agree with amounts reported in the Charter School's basic financial statements. The basic financial statements present the general fund and special revenue fund on a GAAP basis. Budgetary comparison statements and schedules (RSI) are presented for the general fund and special revenue fund to demonstrate finance-related legal compliance in which certain revenue is permitted by law or grant agreement to be recognized in the fiscal year, whereas for GAAP reporting, revenue is not recognized until the subsequent year or expenditures have been made. The general fund is presented in the accompanying schedules on the modified accrual basis. The special revenue fund is presented in the accompanying schedules on the grant accounting budgetary basis, which recognizes encumbrances as expenditures and also recognizes the related revenues, whereas the GAAP basis does not. The net adjustment to reconcile from the budgetary basis to GAAP basis is \$-0- for the general fund and \$-0- for the special revenue fund. See Note 1 (the Notes to Required Supplementary Information) for a reconciliation of the budgetary basis to the modified accrual basis of accounting for the general and special revenue funds (C-3).

JERSEY CITY COMMUNITY CHARTER SCHOOL
(County of Hudson)

Notes to Schedules of Expenditures of Federal Awards and State Financial Assistance
Year Ended June 30, 2024

3. Relationship to Basic Financial Statements - *continued*

Federal awards and state financial assistance revenues are reported in the Charter School's basic financial statements on a GAAP basis as follows:

	Federal	State	Total
General Fund	\$ 7,625	\$ 11,283,540	\$ 11,291,165
Special Revenue Fund	3,189,096	-	3,189,096
Enterprise Fund	424,573	8,564	433,137
Total	<u>\$ 3,621,294</u>	<u>\$ 11,292,104</u>	<u>\$ 14,913,398</u>

4. Relationship to Federal and State Financial Reports

Amounts reported in the accompanying schedules agree with the amounts reported in the related federal and state financial reports.

5. Other Information

TPAF Social Security contribution in the amount of \$185,156 represents the amount reimbursed by the State for the employer's share of social security contributions for TPAF members for the fiscal year ended June 30, 2024. The amount reported as TPAF pension representing on-behalf employer's portion of the TPAF Pension System Contributions, TPAF Post-Retirement Medical Benefits Contributions and TPAF Long Term Disability Insurance Premium Contributions in the amount of \$1,195,692 represents the amount paid by the State on behalf of the Charter School for the fiscal year ended June 30, 2024.

6. On Behalf Programs Not Subject to State Single Audit

On-behalf State Programs for TPAF Pension and Post-Retirement Medical Benefits Contributions are not subject to a State single audit and, therefore, are excluded from major program determination. The Schedule of State Financial Assistance provides a reconciliation of State financial assistance reported in the Charter School's financial statements and the amount subject to State single audit and major program determination.

7. De Minimis Indirect Cost

The Charter School has not elected to use the ten percent de minimis indirect cost rate allowed under the Uniform Guidance.

JERSEY CITY COMMUNITY CHARTER SCHOOL
(County of Hudson)
Schedule of Findings and Questioned Costs
Year Ended June 30, 2024

Part I - Summary of Auditors' Results

Financial Statements Section

Type of auditor's report issued: Unmodified

Internal control over financial reporting:

Material weaknesses identified? _____ Yes ☒ No

Significant deficiencies identified? _____ Yes ☒ None reported

Noncompliance material to financial statements noted? _____ Yes ☒ No

Federal Awards:

Type of auditor's report on compliance for major programs: Unmodified

Internal control over major programs:

Material weaknesses identified? _____ Yes ☒ No

Significant deficiencies identified? _____ Yes ☒ None reported

Any audit findings disclosed that are required to be reported in accordance with 2 CFR 200.516(a)? _____ Yes ☒ No

Identification of major programs:

Assistance Listing

<u>Number(s)</u>	<u>FAIN Number(s)</u>	<u>Name of Federal Program or Cluster</u>
84.425D	S425D210027	Coronavirus Response and Relief Supplemental Act (CRRSA) ESSER II
84.425U	S425U210027	American Rescue Plan (ARP) ESSER III

Dollar threshold used to distinguish between Type A and B programs: \$750,000

Auditee qualifies as low-risk auditee? ☒ yes _____ No

JERSEY CITY COMMUNITY CHARTER SCHOOL
(County of Hudson)
Schedule of Findings and Questioned Costs
Year Ended June 30, 2024

Part I Summary of Auditors' Results

State Financial Assistance Section

Dollar threshold used to distinguish between Type A and B programs: \$750,000

Auditee qualifies as low-risk auditee? ☒ yes ☐ No

Type of auditor's report on compliance for major programs: Unmodified

Internal control over major programs:

Material weakness(es) identified? ☐ Yes ☒ No

Significant deficiency(cies) identified that are not
 Considered to be material weaknesses? ☐ Yes ☒ None reported

Any audit findings disclosed that are required to be reported
 in accordance with NJ OMB Circulars 15-08 as applicable? ☐ Yes ☒ No

Identification of Major Programs:

<u>State Grant/Program Number(s)</u>	<u>Name of State Program or Cluster</u>
23-495-034-5120-078	Equalization Aid
23-495-034-5120-089	Special Education Aid
23-495-034-5120-084	Security Aid

**JERSEY CITY COMMUNITY CHARTER SCHOOL
(County of Hudson)
Schedule of Findings and Questioned Costs
Year Ended June 30, 2024**

Part II – Schedule of Financial Statement Findings

NONE

**JERSEY CITY COMMUNITY CHARTER SCHOOL
(County of Hudson)
Schedule of Findings and Questioned Costs
Year Ended June 30, 2024**

Part III –Federal Awards Findings and Questioned Cost

NONE

Part III – State Financial Assistance Findings and Questioned Cost

NONE

JERSEY CITY COMMUNITY CHARTER SCHOOL
(County of Hudson)
Summary Schedule of Prior Year Audit Findings
Year Ended June 30, 2024

There were no prior year's audit findings.