

PRINCETON CHARTER SCHOOL

**Board of Trustees
Princeton Charter School
Princeton, New Jersey**

**Annual Comprehensive Financial Report
For the Fiscal Year Ended June 30, 2024**

**Annual Comprehensive
Financial Report**

of the

PRINCETON CHARTER SCHOOL

Princeton, New Jersey

For the Fiscal Year Ended June 30, 2024

**Prepared by
Princeton Charter School
Finance Department**

PRINCETON CHARTER SCHOOL
TABLE OF CONTENTS
FISCAL YEAR ENDED JUNE 30, 2024

INTRODUCTORY SECTION (UNAUDITED)

Letter of Transmittal	1
Organizational Chart.....	4
Roster of Officials.....	5
Consultants and Advisors	6

FINANCIAL SECTION

Independent Auditors' Report.....	8
-----------------------------------	---

Required Supplementary Information.....	11
Management's Discussion and Analysis	12

Basic Financial Statements (Sections A. and B.).....	20
--	----

A. Charter School-Wide Financial Statements.....	21
A-1 Statement of Net Position	22
A-2 Statement of Activities	23

B. Fund Financial Statements	25
B-1 Balance Sheet – Governmental Funds.....	26
B-2 Statement of Revenue, Expenditures and Changes in Fund Balance – Governmental Funds	28
B-3 Reconciliation of the Statement of Revenue, Expenditures and Changes in Fund Balances of Governmental Funds to the Statement of Activities.....	29
B-4 Statement of Net Position – Proprietary Funds	30
B-5 Statement of Revenue, Expenses and Changes in Net Position – Proprietary Funds.....	31
B-6 Statement of Cash Flows – Proprietary Funds	32

Notes to the Basic Financial Statements	33
---	----

Required Supplementary Information.....	71
---	----

L. Schedules Related to Accounting and Reporting for Pensions and Postemployment Benefits	
Other than Pensions.....	72
L-1 Schedule of Charter School's Proportionate Share of the Net Pension Liability – Public Employees Retirement System	72
L-2 Schedule of Charter School Contributions – Public Employees Retirement System	73
L-3 Schedule of State's Proportionate Share of the Net Pension Liability Associated with the Charter School - Teachers' Pension and Annuity Fund	74
L-4 Schedule of State Contributions - Teachers' Pension and Annuity Fund.....	75
L-5 Schedule of Changes in the State's Proportionate Share of the Total OPEB Liability Associated with the Charter School and Related Ratios.....	76
Notes to Required Supplementary Information.....	77

PRINCETON CHARTER SCHOOL
TABLE OF CONTENTS
FISCAL YEAR ENDED JUNE 30, 2024
(Continued)

FINANCIAL SECTION (Cont'd)

Supplementary Schedules (Sections C. to I.)

C. Budgetary Comparison Schedules.....	78
C-1 Budgetary Comparison Schedule – General Fund.....	79
C-2 Budgetary Comparison Schedule – Special Revenue Fund.....	86
C-3 Budgetary Comparison Schedule – Notes to RSI.....	87
D. School Level Schedules (Not Applicable)	88
E. Special Revenue Fund	89
E-1 Combining Schedule of Revenue and Expenditures Special Revenue Fund – Budgetary Basis	90
E-2 Preschool Education Aid Schedule of Expenditures Special Revenue Fund– Budgetary Basis (Not Applicable)	
F. Capital Projects Fund	91
F-1 Summary Schedule of Revenues, Expenditures and Changes in Fund Balance.....	92
F-1A Schedule of Project Revenues, Expenditures, Project Balance and Project Status - Expansion and Renovation of the Princeton Charter School.....	93
G. Proprietary Funds	94
G-1 Combining Statement of Net Position – Proprietary Funds	95
G-2 Combining Statement of Revenue, Expenses and Changes in Net Position – Proprietary Funds	96
G-3 Combining Statement of Cash Flows – Proprietary Funds.....	97
H. Fiduciary Activities (Not Applicable).....	98
I. Long-Term Liabilities	99
I-1 Schedule of Mortgage Loans Payable	100

STATISTICAL SECTION

J. Statistical Section (Unaudited)	102
J-1 Net Position by Component	103
J-2 Revenues, Expenses and Changes in Net Position	104
J-3 Fund Balances – Governmental Funds	106
J-4 Changes in Fund Balance, Governmental Funds.....	107
J-5 General Fund Other Local Revenue by Source	109
J-6 Assessed Value and Estimated Actual Value of Taxable Property (Not Applicable)	
J-7 Direct and Overlapping Property Tax Rates (Not Applicable)	
J-8 Principal Property Taxpayers (Current Year and Nine Years Ago) (Not Applicable)	
J-9 Property Tax Levies and Collections (Not Applicable)	
J-10 Ratios of Outstanding Debt by Type	110

PRINCETON CHARTER SCHOOL
TABLE OF CONTENTS
FISCAL YEAR ENDED JUNE 30, 2024
(Continued)

STATISTICAL SECTION (Cont'd)

J-11 Ratios of Net General Bonded Debt Outstanding (Not Applicable)	
J-12 Ratios of Direct and Overlapping Governmental Activities Debt (Not Applicable)	
J-13 Legal Debt Margin Information (Not Applicable)	
J-14 Demographic and Economic Statistics	111
J-15 Principal Employers, Current and Nine Years Ago (Not Applicable)	
J-16 Full-time Equivalent Charter School Employees by Function/Program	112
J-17 Operating Statistics.....	113
J-18 School Building Information	114
J-19 Schedule of Allowable Maintenance Expenditures by School Facility (Not Applicable)	
J-20 Insurance Schedule	115
J-21 Financial Performance – Governmental Activities.....	117

SINGLE AUDIT SECTION

K. Single Audit Section.....	118
K-1 Report on Internal Control Over Financial Reporting and on Compliance and Other Matters Based on an Audit of Financial Statements Performed in Accordance With <i>Government Auditing Standards</i>	119
K-2 Report on Compliance for Each Major State Program; Report on Internal Control over Compliance Required by NJOMB 15-08	121
K-3 Schedule of Expenditures of Federal Awards	124
K-4 Schedule of Expenditures of State Awards	125
K-5 Notes to the Schedules of Expenditures of Federal and State Awards	126
K-6 Schedule of Findings and Questioned Costs	128
K-7 Summary Schedule of Prior Audit Findings.....	129

INTRODUCTORY SECTION
(UNAUDITED)

Princeton Charter School

100 Bunn Drive
Princeton, NJ 08540
609-924-0575

November 22, 2024

The Honorable President and Members
of the Board of Trustees
Princeton Charter School
Princeton, New Jersey

Dear Board Members:

The annual comprehensive financial report of the Princeton Charter School (the "Charter School") for the fiscal year ended June 30, 2024, is hereby submitted. Responsibility for both the accuracy of the data and completeness and fairness of the presentation, including all disclosures, rests with the management of the Board of Trustees (the "Board"). To the best of our knowledge and belief, the data presented in this report is accurate in all material respects and is reported in a manner designed to present fairly the basic financial statements and results of operations of the Charter School. All disclosures necessary to enable the reader to gain an understanding of the Charter School's financial activities have been included.

The annual comprehensive financial report is presented in four sections: introductory, financial, statistical, and single audit. The introductory section includes this transmittal letter, the Charter School's organizational chart, roster of officials and a list of consultants and advisors. The financial section includes the Independent Auditors' Report, management's discussion and analysis, the basic financial statements and notes providing an overview of the Charter School's financial position and operating results, and supplementary schedules providing detailed budgetary information. The statistical section includes selected economic and demographic information, financial trends, and the fiscal capacity of the Charter School, generally presented on a multi-year basis. The Charter School is required to undergo an annual single audit in conformity with the provisions of Title 2 U.S. Code of Federal Regulations Part 200, *Uniform Administrative Requirements, Cost Principles, and Audit Requirements for Federal Awards*, and the New Jersey's OMB Circular 15-08, *Single Audit Policy for Recipients of Federal Grants, State Grants and State Aid*. Information related to this single audit, including the auditors' reports on the internal control and compliance with applicable laws, regulations, contracts and grants along with findings and questioned costs, are included in the single audit section of this report.

1) REPORTING ENTITY AND ITS SERVICES

The Princeton Charter School is an independent reporting entity within the criteria adopted by the Governmental Accounting Standards Board ("GASB") in codification section 2100. All funds of the Charter School are included in this report. The Princeton Charter School constitutes the Charter School's reporting entity.

Princeton Charter School is a K-8 independent public school, operated by a Board of Trustees under a charter granted by the Commissioner of Education of the State of New Jersey. The Charter School opened in 1997 as a fourth grade through sixth grade elementary school. It currently operates a kindergarten through eighth grade school with a diverse student population of students and staff. Princeton Charter School's charter was renewed in February of 2021 for a five-year term; this was the Charter School's fifth renewal. The Acting Commissioner, in granting the Charter School's renewal, praised the Charter School for its academic accomplishments and student success. The Charter School's next renewal application process will take place in the 2025-2026 school year.

1) REPORTING ENTITY AND ITS SERVICES (Cont'd)

There are three (3) school buildings on the Charter School's campus, all of which are in good condition. The buildings are as follows: K-4 building (lower school) built in 2003, 5-8 building (upper school) built in 1963 and renovated into a school building in 1998, and the campus center, built in 2010, which houses a gym, 3 classrooms and a black box theatre. There is also a business office, known as the Marsee Center, located on the Charter School's campus. A cafeteria and two classrooms were added to the upper school and two classrooms were added to the lower school in 2022.

The Charter School completed the 2023-2024 school year with an enrollment of 429 students.

2) ECONOMIC CONDITION AND OUTLOOK

Princeton Charter School is located within the municipality of Princeton and the financial resources it receives flow through the Princeton Public School District (district of residence) on a per-pupil basis. The economy in Princeton is flat and home properties are generally increasing their value. Most of the undeveloped land in Princeton is held by Princeton University. It is believed there may be some commercial and residential growth potential within the municipality.

3) INTERNAL ACCOUNTING CONTROLS

Management of the Charter School is responsible for establishing and maintaining an internal control system designed to ensure that the assets of the Charter School are protected from loss, theft or misuse and to ensure that adequate accounting data is compiled to allow for the preparation of financial statements in conformity with generally accepted accounting principles (GAAP). The internal control system is designed to provide reasonable, but not absolute, assurance that these objectives are met. The concept of reasonable assurance recognizes that: (1) the cost of a control should not exceed the benefits likely to be derived; and (2) the valuation of costs and benefits requires estimates and judgments by management.

As a recipient of federal and state awards, the Charter School also is responsible for ensuring that an adequate internal control system is in place to ensure compliance with applicable laws and regulations related to those programs. This internal control system is also subject to periodic evaluation by the Charter School's management.

As part of the Charter School's single audit described earlier, tests are made to determine the adequacy of the internal control system, including that portion related to major federal and state award programs, as well as to determine that the Charter School has complied with applicable laws, regulations, contracts and grants.

4) BUDGETARY CONTROLS

In addition to internal accounting controls, the Charter School maintains budgetary controls. The objective of these budgetary controls is to ensure compliance with legal provisions embodied in the annual appropriated budget approved by a vote of the Board of Trustees. Annual appropriated budgets are adopted for the General and Special Revenue Funds. Project length budgets are approved for the capital improvements accounted for in the Capital Projects Fund. The final budget amount as amended for the period is reflected in the financial section.

4) BUDGETARY CONTROLS (Cont'd)

An encumbrance accounting system is used to record outstanding purchase commitments on a line item basis. Open encumbrances at year-end are either canceled or are included as re-appropriations of fund balance in the subsequent year. Those amounts to be re-appropriated are reported as restrictions, commitments and assignments of fund balance at June 30, 2024.

5) ACCOUNTING SYSTEM AND REPORTS

The Charter School's accounting records reflect generally accepted accounting principles, as promulgated by the GASB. The accounting system of the Charter School is organized on the basis of funds. These funds are explained in "Notes to the Basic Financial Statements", Note 1.

6) OTHER INFORMATION

Independent Audit - State statutes require an annual audit by independent certified public accountants or registered municipal accountants. The accounting firm of Nisivoccia LLP was selected by the Board of Trustees at its organizational meeting.

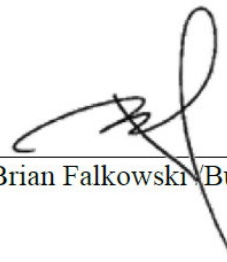
In addition to meeting the requirements set forth in state statutes, the audit also was designed to meet the requirements of Title 2 U.S. Code of Federal Regulations Part 200, *Uniform Administrative Requirements, Cost Principles, and Audit Requirements for Federal Awards*, and New Jersey's OMB Circular 15-08, *Single Audit Policy for Recipients of Federal Grants, State Grants and State Aid*. The auditors' report on the basic financial statements and specific required supplementary information is included in the financial section of this report. The auditors' reports related specifically to the single audit are included in the single audit section of this report.

7) ACKNOWLEDGMENTS

We would like to express our appreciation to the members of the Board of Trustees of the Princeton Charter School for their concern in providing fiscal accountability to the citizens and participating districts of the Charter School and thereby contributing their full support to the development and maintenance of our financial operation. The preparation of this report could not have been accomplished without the efficient and dedicated services of the financial and accounting staff.



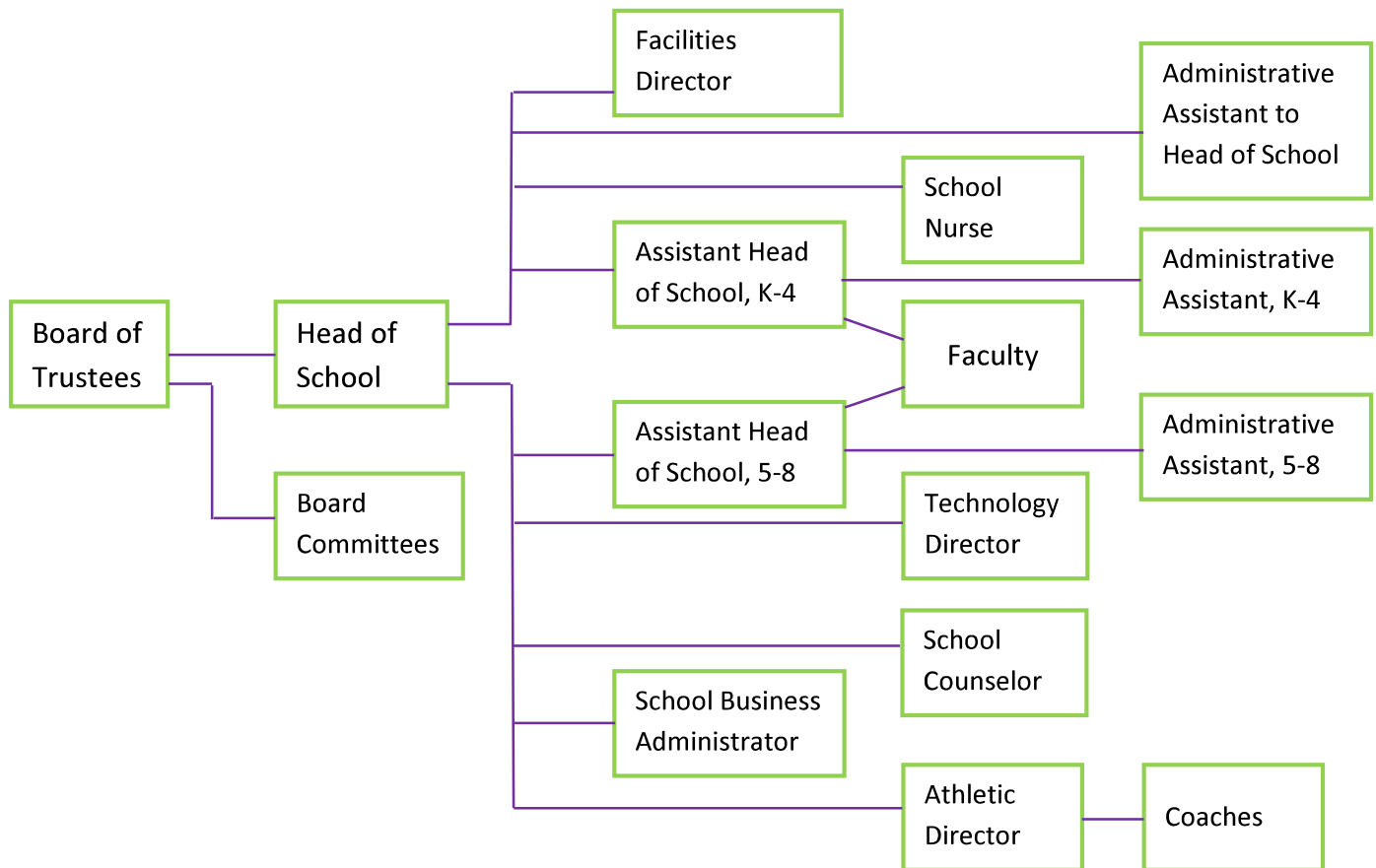
Lawrence D. Patton/Head of School



Dr. Brian Falkowski/Business Administrator

Princeton Charter School

Organizational Chart



PRINCETON CHARTER SCHOOL
ROSTER OF OFFICIALS
JUNE 30, 2024

<u>Board of Trustees</u>	<u>Position</u>	<u>Expiration of Term</u>
Stefanos Damianakis	President	June 2024
Rishi Modi	Member	June 2026
Sarah Rivett	Member	June 2026
Olga Troyanskaya	Member	June 2026
Rupal Kothari	Member	June 2024
Rakesh Kumar	Member	June 2024
Irene Chiu	Member	June 2025
Jennifer Freedman, MD	Member	June 2025
Anita Misri	Member	June 2025
<u>Other Officials</u>	<u>Title</u>	
Lawrence D. Patton	Head of School	
Dr. Brian Falkowski	Business Administrator/Board Secretary	

PRINCETON CHARTER SCHOOL
CONSULTANTS AND ADVISORS

Audit Firm

Nisivoccia LLP
200 Valley Road, Suite 300
Mount Arlington, NJ, 07856
and
Lawrence Business Park
11 Lawrence Road
Newton, NJ 07860
and
1140 Route 22 East, Suite 203
Bridgewater, New Jersey 08807

Attorney

Busch Law Group, LLC
450 Main Street
Metuchen, NJ 08840

Official Depository

Peapack Gladstone Bank
300 Carnegie Center
Princeton, NJ 08540

FINANCIAL SECTION

Independent Auditors' Report

The Honorable President and Members
of the Board of Trustees
Princeton Charter School
County of Mercer, New Jersey

Report on the Audit of the Financial Statements

Opinions

We have audited the accompanying financial statements of the governmental activities, the business-type activities, each major fund and the aggregate remaining fund information of the Princeton Charter School (the "Charter School"), in the County of Mercer, as of and for the fiscal year ended June 30, 2024, and the related notes to the financial statements, which collectively comprise the District's basic financial statements as listed in the table of contents.

In our opinion, the accompanying financial statements referred to above present fairly, in all material respects, the respective financial position of the governmental activities, the business-type activities, each major fund and the aggregate remaining fund information of the District, as of June 30, 2024, and the respective changes in financial position, and, where applicable cash flows thereof for the fiscal year then ended in accordance with accounting principles generally accepted in the United States of America.

Basis for Opinions

We conducted our audit in accordance with auditing standards generally accepted in the United States of America (GAAS), audit requirements prescribed by the Office of School Finance, Department of Education, State of New Jersey (the "Office") and the standards applicable to financial audits contained in *Government Auditing Standards*, issued by the Comptroller General of the United States. Our responsibilities under those standards are further described in the Auditor's Responsibilities for the Audit of the Financial Statements section of our report. We are required to be independent of the District and to meet our other ethical responsibilities, in accordance with the relevant ethical requirements relating to our audit. We believe that the audit evidence we have obtained is sufficient and appropriate to provide a basis for our audit opinions.

Responsibilities of Management for the Financial Statements

Management is responsible for the preparation and fair presentation of the financial statements in accordance with accounting principles generally accepted in the United States of America, and for the design, implementation, and maintenance of internal control relevant to the preparation and fair presentation of financial statements that are free from material misstatement, whether due to fraud or error.

In preparing the financial statements, management is required to evaluate whether there are conditions or events, considered in the aggregate, that raise substantial doubt about the Charter School's ability to continue as a going concern for twelve months beyond the financial statement date, including any currently known information that may raise substantial doubt shortly thereafter.

Auditor's Responsibilities for the Audit of the Financial Statements

Our objectives are to obtain reasonable assurance about whether the financial statements as a whole are free from material misstatement, whether due to fraud or error, and to issue an auditor's report that includes our opinions. Reasonable assurance is a high level of assurance but is not absolute assurance and therefore is not a guarantee that an audit conducted in accordance with GAAS, *Government Auditing Standards* and audit requirements prescribed by the Office will always detect a material misstatement when it exists. The risk of not detecting a material misstatement resulting from fraud is higher than for one resulting from error, as fraud may involve collusion, forgery, intentional omissions, misrepresentations, or the override of internal control. Misstatements are considered material if there is a substantial likelihood that, individually or in the aggregate, they would influence the judgment made by a reasonable user based on the financial statements.

In performing an audit in accordance with GAAS, *Government Auditing Standards* and audit requirements prescribed by the Office, we:

- exercise professional judgment and maintain professional skepticism throughout the audit.
- identify and assess the risks of material misstatement of the financial statements, whether due to fraud or error, and design and perform audit procedures responsive to those risks. Such procedures include examining, on a test basis, evidence regarding the amounts and disclosures in the financial statements.
- obtain an understanding of internal control relevant to the audit in order to design audit procedures that are appropriate in the circumstances, but not for the purpose of expressing an opinion on the effectiveness of the Charter School's internal control. Accordingly, no such opinion is expressed.
- evaluate the appropriateness of accounting policies used and the reasonableness of significant accounting estimates made by management, as well as evaluate the overall presentation of the financial statements.
- conclude whether, in our judgment, there are conditions or events, considered in the aggregate, that raise substantial doubt about the Charter School's ability to continue as a going concern for a reasonable period of time.

We are required to communicate with those charged with governance regarding, among other matters, the planned scope and timing of the audit, significant audit findings, and certain internal control-related matters that we identified during the audit.

Required Supplementary Information

Accounting principles generally accepted in the United States of America require that the management's discussion and analysis, which follows this report, the pension and post-retirement schedules in Exhibits L-1 through L-5 and the related notes, and the budgetary comparison information in Exhibits C-1 through C-3 be presented to supplement the basic financial statements. Such information is the responsibility of management and, although not a part of the basic financial statements, are required by the Governmental Accounting Standards Board who considers it to be an essential part of financial reporting for placing the basic financial statements in an appropriate operational, economic, or historical context. We have applied certain limited procedures to the required supplementary information in accordance with auditing standards generally accepted in the United States of America, which consisted of inquiries of management about the methods of preparing the information and comparing the information for consistency with management's responses to our inquiries, the basic financial statements, and other knowledge we obtained during our audit of the basic financial statements. We do not express an opinion or provide any assurance on the information because the limited procedures do not provide us with sufficient evidence to express an opinion or provide any assurance.

Supplementary Information

Our audit was conducted for the purpose of forming opinions on the financial statements that collectively comprise the District's basic financial statements. The accompanying supplementary information schedules and the schedules of expenditures of federal and state awards, as required by Title 2 U.S. Code of Federal Regulations Part 200, *Uniform Administrative Requirements, Cost Principles, and Audit Requirements for Federal Awards*; and New Jersey's OMB Circular 15-08, *Single Audit Policy for Recipients of Federal Grants, State Grants and State Aid*, are presented for purposes of additional analysis and are not a required part of the basic financial statements. Such information is the responsibility of management and was derived from and relates directly to the underlying accounting and other records used to prepare the basic financial statements. The information has been subjected to the auditing procedures applied in the audit of the basic financial statements and certain additional procedures, including comparing and reconciling such information directly to the underlying accounting and other records used to prepare the basic financial statements or to the basic financial statements themselves, and other additional procedures in accordance with auditing standards generally accepted in the United States of America. In our opinion, the accompanying supplementary information schedules and the schedules of expenditures of federal and state awards are fairly stated, in all material respects, in relation to the basic financial statements as a whole.

Other Information

Management is responsible for the other information included in the annual report. The other information comprises the introductory and statistical sections but does not include the basic financial statements and our auditor's report thereon. Our opinions on the basic financial statements do not cover the other information, and we do not express an opinion or any form of assurance thereon.

In connection with our audit of the basic financial statements, our responsibility is to read the other information and consider whether a material inconsistency exists between the other information and the basic financial statements, or the other information otherwise appears to be materially misstated. If, based on the work performed, we conclude that an uncorrected material misstatement of the other information exists, we are required to describe it in our report.

Other Reporting Required by Government Auditing Standards

In accordance with *Government Auditing Standards*, we have also issued our report dated November 22, 2024 on our consideration of the Charter School's internal control over financial reporting and on our tests of its compliance with certain provisions of laws, regulations, contracts, and grant agreements and other matters. The purpose of that report is solely to describe the scope of our testing of internal control over financial reporting and compliance and the results of that testing, and not to provide an opinion on the effectiveness of the Charter School's internal control over financial reporting or on compliance. That report is an integral part of an audit performed in accordance with *Government Auditing Standards* in considering Charter School's internal control over financial reporting and compliance.

November 22, 2024
Mount Arlington, New Jersey

Nisivoccia, LLP
NISIVOCIA LLP

Kathryn L. Mantell
Kathryn L. Mantell
Licensed Public School Accountant #884
Certified Public Accountant

REQUIRED SUPPLEMENTARY INFORMATION
MANAGEMENT'S DISCUSSION AND ANALYSIS

**PRINCETON CHARTER SCHOOL
MANAGEMENT’S DISCUSSION AND ANALYSIS
FOR THE FISCAL YEAR ENDED JUNE 30, 2024**

This section of Princeton Charter School’s annual financial report presents its discussion and analysis of the Charter School’s financial performance during the fiscal year ending June 30, 2024. Please read it in conjunction with the transmittal letter at the front of this report and the Charter School’s financial statements, which immediately follow this section.

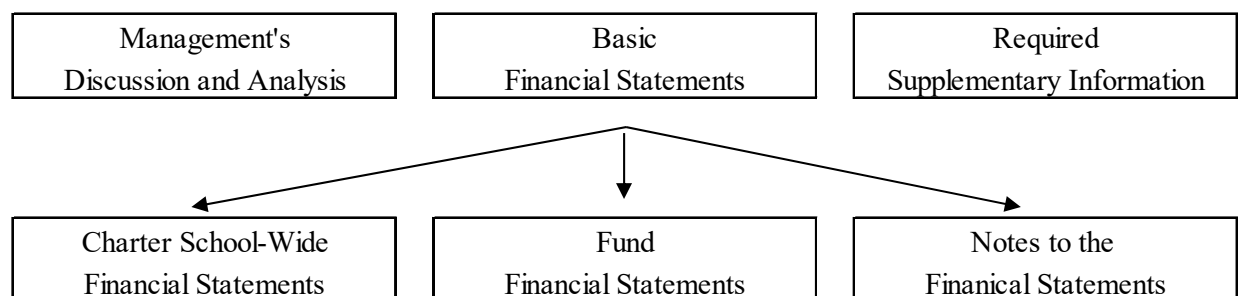
Overview of the Financial Statements

This annual report consists of three parts: management’s discussion and analysis (this section), the basic financial statements, and required supplementary information. The basic financial statements include two kinds of statements that present different views of the Charter School:

- The first two statements are *Charter School-wide financial statements* that provide both *short-term* and *long-term* information about the Charter School’s *overall* financial status.
- The remaining statements are *fund financial statements* that focus on *individual parts* of the Charter School, reporting the School’s operations in *more* detail than the Charter School-Wide statements.
- The *governmental funds statements* tell how basic services such as regular and special education were financed in the short-term as well as what remains for future spending.
- The *proprietary funds statements* offer short- and long-term financial information about the activities the School operates like a business, such as food services and student programs.

The financial statements also include notes that explain some of the information in the statements and provide more detailed data. The statements are followed by a section of required supplementary information that further explains and supports the financial statements with a comparison of the Charter School’s budget for the year. Figure A-1 shows how the various parts of this annual report are arranged and related to one another.

**Figure A-1
Organization of the Princeton Charter School's Financial Report**



**PRINCETON CHARTER SCHOOL
MANAGEMENT'S DISCUSSION AND ANALYSIS
FOR THE FISCAL YEAR ENDED JUNE 30, 2024**

Figure A-2 summarizes the major features of the Charter School's financial statements, including the portion of the Charter School's activities they cover and the types of information they contain. The remainder of this overview section of management's discussion and analysis highlights that structure and contents of each of the statements.

Figure A-2

	Charter School-Wide Statements	Fund Financial Statements	
		Governmental Funds	Proprietary Funds
Scope	Entire School	The activities of the School that are not proprietary, such as special education and building maintenance	Activities the School operates similar to private businesses: food services and student programs
Required Financial Statements	<ul style="list-style-type: none"> • Statement of net position • Statement of activities 	<ul style="list-style-type: none"> • Balance sheet • Statement of revenue, expenditures, and changes in fund balances 	<ul style="list-style-type: none"> • Statement of net position • Statement of revenue, expenses, and changes in net position • Statement of cash flows
Accounting Basis and Measurement Focus	Accrual accounting and economic resources focus	Modified accrual accounting and current financial resources focus	Accrual accounting and economic resources focus
Type of Asset/Liability Information	All assets and liabilities, both financial and capital, short-term and long-term	Generally, assets expected to be used and liabilities that come due during the year or soon thereafter; no capital assets, lease assets, subscription assets or long-term liabilities are included	All assets and liabilities, both financial and capital, short-term and long-term
Type of Inflow/Outflow Information	All revenue and expenses during the year, regardless of when cash is received or paid	Revenue for which cash is received during or soon after the end of the year; expenditures when goods or services have been received and the related liability is due and payable	All revenue and expenses during the year, regardless of when cash is received or paid

**PRINCETON CHARTER SCHOOL
MANAGEMENT'S DISCUSSION AND ANALYSIS
FOR THE FISCAL YEAR ENDED JUNE 30, 2024**

Charter School-wide Statements

The Charter School-wide statements report information about the Charter School, as a whole, using accounting methods similar to those used by private-sector companies. The statement of net position includes all the Charter School's assets, deferred inflows and outflows, and liabilities. All the current year's revenue and expenses are accounted for in the statement of activities regardless of when cash is received or paid.

The two Charter School-wide statements report the Charter School's *net position* and how they have changed. Net positions – the difference between the Charter School's assets, outflows and deferred inflows, and liabilities – is one way to measure the Charter School's financial health or *position*.

- Over time, increases or decreases in the School's net position are an indicator of whether its financial position is improving or deteriorating, respectively.
- To assess the Charter School's overall health, you need to consider additional nonfinancial factors such as changes in the Charter School's property tax base and enrollment and the condition of school buildings and other facilities.

In the Charter School-wide financial statements, the School's activities are in the following categories:

- *Governmental activities:* Most of the Charter School's basic services are included here, such as regular and special education, transportation and administration. Property taxes and state formula aid finance most of these activities.
- *Business-type activities:* The Charter School charges fees to help it cover the costs of certain services it provides. The Charter School's food service and student programs are included here.

Fund Financial Statements

The fund financial statements provide more detailed information about the Charter School's funds, focusing on its most significant or "major" funds – not the Charter School as a whole. Funds are accounting devices the School uses to keep track of specific sources of funding and spending for particular programs.

- Some funds are required by state law and by bond covenants.
- The Charter School establishes other funds to control and manage money for particular purposes (such as repaying its long-term liabilities) or to show that it is properly using certain revenue (such as federal grants).

The School has two kinds of funds:

- *Governmental funds:* Most of the Charter School's basic services are included in governmental funds, which generally focus on {1} how cash and other financial assets that can readily be converted to cash flow in and out, and {2} the balances left at year-end that are available for spending. Consequently, the governmental funds statements provide a detailed short-term view that helps you determine whether there are more or fewer financial resources that can be spent in the near future to finance the Charter School's programs. Because this information does not encompass the additional long-term focus of the Charter School-wide statements, additional information at the bottom of the governmental funds statements explains the relationship (or difference) between them.
- *Proprietary funds:* Services for which the Charter School charges a fee are generally reported in proprietary funds. Proprietary funds are reported in the same way as the Charter School-wide statements. The Charter School's enterprise funds (one type of proprietary fund) are the same as its business-type activities but provide more detail and additional information (such as cash flows).

**PRINCETON CHARTER SCHOOL
MANAGEMENT'S DISCUSSION AND ANALYSIS
FOR THE FISCAL YEAR ENDED JUNE 30, 2024**

Fund Financial Statements

- *Internal service funds* (the other kind of proprietary fund) report activities that provide supplies and services for other programs and activities. The Charter School currently does not maintain any internal service funds.

Notes to the Basic Financial Statements: The notes provide additional information that is essential to a full understanding of the data provided in the Charter School-wide and fund financial statements. The notes to the basic financial statements can be found immediately following the fund financial statements.

Financial Analysis of the School as a Whole

Net Position. The Charter School's *combined* net position was \$3,172,976 as of June 30, 2024 – a decrease of \$301,645 or 8.68% from the prior year. (See Figure A-3).

**Figure A-3
Condensed Statement of Net Position**

	Governmental Activities		Business-Type Activities		Total Charter School		%
	2023-2024	2022-2023	2023-2024	2022-2023	2023-2024	2022-2023	Change
Current and							
Other Assets	\$ 719,672	\$ 481,706	\$ 5,525	\$ 28,728	\$ 725,197	\$ 510,434	
Capital Assets, Net	13,398,611	14,005,894	3,983	5,241	13,402,594	14,011,135	
Total Assets	14,118,283	14,487,600	9,508	33,969	14,127,791	14,521,569	-2.71%
Deferred Outflows of							
Resources	1,059,012	1,116,231			1,059,012	1,116,231	-5.13%
Other Liabilities	321,901	126,967	5,525	9,688	327,426	136,655	
Long-Term Liabilities	11,246,110	11,461,776			11,246,110	11,461,776	
Total Liabilities	11,568,011	11,588,743	5,525	9,688	11,573,536	11,598,431	-0.21%
Deferred Inflows of							
Resources	440,291	564,748			440,291	564,748	-22.04%
Net Position:							
Investment in							
Capital Assets	3,510,948	3,729,063	3,983	5,241	3,514,931	3,734,304	
Restricted	115,150	127,510			115,150	127,510	
Unrestricted/(Deficit)	(457,105)	(406,233)		19,040	(457,105)	(387,193)	
Total Net Position	\$3,168,993	\$3,450,340	\$ 3,983	\$ 24,281	\$3,172,976	\$3,474,621	-8.68%

**PRINCETON CHARTER SCHOOL
MANAGEMENT'S DISCUSSION AND ANALYSIS
FOR THE FISCAL YEAR ENDED JUNE 30, 2024**

Changes in Net Position. The Charter School's combined net position was \$3,172,976 on June 30, 2024 – governmental activities decreased \$281,347 and business-type activities decreased \$20,298. The Charter School's net position invested in capital assets decreased primarily due to depreciation an expense offset by the paydown of mortgage payables, and unrestricted net position decreased primarily due to the increase in the net position liability and changes in the related deferred inflows and outflows. Restricted net position decreased due to the stated account balances primarily being used in the current year.

Figure A-4

Changes in Net Position from Operating Results

	Governmental Activities		Business-Type Activities		Total School District		%
	2023-2024	2022-2023	2023-2024	2022-2023	2023-2024	2022-2023	Change
Revenue:							
Program Revenue:							
Charges for Services	\$ 1,135	\$ 68,342	\$ 257,808	\$183,199	\$ 258,943	\$ 251,541	
Operating Grants and Contributions	1,712,119	\$1,990,933	17,179	41,635	1,729,298	2,032,568	
Capital Grants and Contributions	117,713				117,713		
General Revenue:							
Local Levy - Charter School Aid	7,123,589	6,538,180			7,123,589	6,538,180	
Unrestricted Federal & State Aid	374,926	369,563			374,926	369,563	
Other	231,444	266,045			231,444	266,045	
Total Revenue	<u>9,560,926</u>	<u>9,233,063</u>	<u>274,987</u>	<u>224,834</u>	<u>9,835,913</u>	<u>9,457,897</u>	4.00%
Expenses:							
Instruction	6,547,926	6,511,453			6,547,926	6,511,453	
Student & Instruction Related Services	532,725	219,494			532,725	219,494	
Administrative & Business	1,609,395	1,430,812			1,609,395	1,430,812	
Maintenance & Operations	665,767	663,535			665,767	663,535	
Pupil Transportation	37,794	32,855			37,794	32,855	
Other	448,666	487,275	295,285	232,990	743,951	720,265	
Total Expenses	<u>9,842,273</u>	<u>9,345,424</u>	<u>295,285</u>	<u>232,990</u>	<u>10,137,558</u>	<u>9,578,414</u>	5.84%
Change in Net Position	<u><u>\$(281,347)</u></u>	<u><u>\$ (112,361)</u></u>	<u><u>\$ (20,298)</u></u>	<u><u>\$ (8,156)</u></u>	<u><u>\$ (301,645)</u></u>	<u><u>\$(120,517)</u></u>	150.29%

**PRINCETON CHARTER SCHOOL
MANAGEMENT'S DISCUSSION AND ANALYSIS
FOR THE FISCAL YEAR ENDED JUNE 30, 2024**

Governmental Activities

Net position of the Charter School's governmental activities decreased by \$281,347. The decrease is primarily due to capital asset additions offset by the mortgage loan payable and the increase in the net pension liability, depreciation expense, and changes in related deferred inflows and outflows. and offset by the payments on the mortgage loan payables.

Figure A-5 presents the cost of six major Charter School activities: instruction, pupil and instruction services, administration and business, maintenance and operations, transportation, and other. The table also shows each activity's net cost (total cost less fees generated by the activities and intergovernmental aid provided for specific programs):

**Figure A-5
Net Cost of Governmental Activities**

	Total Cost of Services		Net Cost of Services	
	2023-2024	2022-2023	2023-2024	2022-2023
Instruction	\$ 6,547,926	\$ 6,511,453	\$ 4,877,284	\$ 4,623,749
Student & Instruction Services	532,725	219,494	531,590	151,152
Administrative & Business	1,609,395	1,430,812	1,609,395	1,430,812
Maintenance & Operations	665,767	663,535	624,290	625,562
Transportation	37,794	32,855	37,794	32,855
Other	448,666	487,275	330,953	422,019
	<u>\$ 9,842,273</u>	<u>\$ 9,345,424</u>	<u>\$ 8,011,306</u>	<u>\$ 7,286,149</u>

Business-type Activities

Net position from the Charter School's business-type activities decreased by \$20,298 primarily due to the operating loss as well as by the decrease in by non-operating grants revenue. (Refer to Figure A-4).

General Fund Budgetary Highlights

Over the course of the year, the Charter School revised the annual operating budget several times. These budget amendments represented changes made between budgetary line items for changes in school-based needs for programs, supplies and equipment.

**PRINCETON CHARTER SCHOOL
MANAGEMENT'S DISCUSSION AND ANALYSIS
FOR THE FISCAL YEAR ENDED JUNE 30, 2024**

Capital Assets

The Charter School's capital assets decreased \$608,541 or 4.34% which was primarily due to annual depreciation offset by capital project expenditures. (More detailed information about the Charter School's capital assets is presented in the Note 4 to the Financial Statements.)

**Figure A-6
Capital Assets (Net of Depreciation)**

	Governmental Activities		Business-Type Activities		Total School District		Percent Change
	2023-2024	2022-2023	2023-2024	2022-2023	2023-2024	2022-2023	
Land	\$ 2,560,000	\$ 2,560,000			\$ 2,560,000	\$ 2,560,000	
Construction in Progress		6,189,135				6,189,135	
Site Improvements	96,952	102,483			96,952	102,483	
Buildings and Building Improvements	10,646,207	5,037,006			10,646,207	5,037,006	
Furniture, Machinery and Equipment	95,452	117,270	\$ 3,983	\$ 5,241	99,435	122,511	
Total Capital Assets, Net of Depreciation	<u>\$ 13,398,611</u>	<u>\$ 14,005,894</u>	<u>\$ 3,983</u>	<u>\$ 5,241</u>	<u>\$ 13,402,594</u>	<u>\$ 14,011,135</u>	-4.34%

Long-Term Liabilities

The Charter School's Long-Term Liabilities increased \$215,666 or 1.88% during the fiscal year. This is mainly due to the payments on the mortgage loan payable and an increase in the Net Pension Liability. (More detailed information about the Charter School's long-term liabilities is presented in Note 5 to the financial statements.)

**Figure A-7
Long-Term Liabilities**

	Total School District		Percentage Change
	2023-2024	2022-2023	
Mortgage Loan Payable	\$ 9,887,663	\$ 10,276,831	
Net Pension Liability	<u>1,358,447</u>	<u>1,184,945</u>	
	<u>\$ 11,246,110</u>	<u>\$ 11,461,776</u>	-1.88%

**PRINCETON CHARTER SCHOOL
MANAGEMENT'S DISCUSSION AND ANALYSIS
FOR THE FISCAL YEAR ENDED JUNE 30, 2024**

Factors Bearing on the Charter School's Future

Princeton Charter School continues to thrive as shown by its excellent results on the state NJSLA tests, the NJ DOE annual performance report, and as measured by consistent, high demand for enrollment through the lottery. Last year we were named a 2023 National Blue Ribbon School by the U.S. Department of Education. We were ranked the #2 Elementary School in the State by U.S. News and World Report and the #6 Middle School in N.J. (Last year we were the #1 Middle School and the #7 elementary school.)

The school is at its current maximum enrollment of 424 and has recently completed its building expansion to meet the program needs for those students. There are no plans for further increase in enrollment or construction.

Contacting the Charter School's Financial Management

This financial report is designed to provide the Charter School's citizens, customers, investors, and creditors with a general overview of the School's finances and to demonstrate the Charter School's accountability for the money it receives. If you have questions about this report or need additional financial information, contact the School Business Administrator at 609-924-0575.

BASIC FINANCIAL STATEMENTS

CHARTER SCHOOL-WIDE FINANCIAL STATEMENTS

PRINCETON CHARTER SCHOOL
STATEMENT OF NET POSITION
JUNE 30, 2024

	Governmental Activities	Business-type Activities	Total
ASSETS			
Current Assets:			
Cash and Cash Equivalents	\$ 56,261		\$ 56,261
Mortgage Loan Receivable	91,662		91,662
Tax Levy Receivable	100,993		100,993
Receivables from Other Governments:			
State	34,602	\$ 63	34,665
Other		729	729
Other Accounts Receivable	20,438	39,509	59,947
Prepaid Expenses	1,529		1,529
Internal Balances	34,776	(34,776)	
Restricted Cash and Cash Equivalents	115,150		115,150
Non-Current Assets:			
Derivative Instrument - Interest Rate Swap	264,261		264,261
Capital Assets, Net:			
Sites (Land)	2,560,000		2,560,000
Depreciable Site Improvements, Buildings and Building Improvements, and Furniture, Machinery and Equipment	10,838,611	3,983	10,842,594
Total Assets	<u>14,118,283</u>	<u>9,508</u>	<u>14,127,791</u>
DEFERRED OUTFLOWS OF RESOURCES			
Deferred Outflows of Pensions	802,542		802,542
Loss on Refunding of Mortgage Loan	256,470		256,470
Total Deferred Outflows of Resources	<u>1,059,012</u>		<u>1,059,012</u>
LIABILITIES			
Accounts Payable	312,324		312,324
Payable to State Government	2		2
Unearned Revenue	9,575	5,525	15,100
Noncurrent Liabilities:			
Due Within One Year	403,637		403,637
Due Beyond One Year	10,842,473		10,842,473
Total Liabilities	<u>11,568,011</u>	<u>5,525</u>	<u>11,573,536</u>
DEFERRED INFLOWS OF RESOURCES			
Accumulated Increase in Fair Value of Hedging Derivatives	264,261		264,261
Deferred Inflows of Pensions	176,030		176,030
Total Deferred Inflows of Resources	<u>440,291</u>		<u>440,291</u>
NET POSITION			
Net Investment in Capital Assets	3,510,948	3,983	3,514,931
Restricted	115,150		115,150
Unrestricted/(Deficit)	(457,105)		(457,105)
Total Net Position	<u>\$ 3,168,993</u>	<u>\$ 3,983</u>	<u>\$ 3,172,976</u>

THE ACCOMPANYING NOTES TO THE BASIC FINANCIAL STATEMENTS ARE
AN INTEGRAL PART OF THIS STATEMENT

PRINCETON CHARTER SCHOOL
STATEMENT OF ACTIVITIES
JUNE 30, 2024

Functions/Programs	Expenses	Program Revenue			Net (Expense) Revenue and Changes in Net Position		
		Charges for Services	Operating Grants and Contributions	Capital Grants and Contributions	Governmental Activities	Business-type Activities	Total
Governmental Activities:							
Instruction:							
Regular	\$ 6,441,445		\$ 1,424,440		\$ (5,017,005)		\$ (5,017,005)
Special Education	87,530		246,202		158,672		158,672
Other Instruction	18,951				(18,951)		(18,951)
Support Services:							
Student & Instruction Related Services	532,725	\$ 1,135			(531,590)		(531,590)
General Administrative Services	1,227,063				(1,227,063)		(1,227,063)
School Administrative Services	275				(275)		(275)
Central Services	203,259				(203,259)		(203,259)
Administrative Information Technology	178,798				(178,798)		(178,798)
Plant Operations and Maintenance	665,767		41,477		(624,290)		(624,290)
Pupil Transportation	37,794				(37,794)		(37,794)
Capital Outlay	56,541			\$ 117,713	61,172		61,172
Interest on Long-Term Debt	392,125				(392,125)		(392,125)
Total Governmental Activities	9,842,273	1,135	1,712,119	117,713	(8,011,306)		(8,011,306)
Business-Type Activities:							
Food Service	222,558	185,354	17,179			\$ (20,025)	(20,025)
Student Programs	72,727	72,454				(273)	(273)
Total Business-Type Activities	295,285	257,808	17,179			(20,298)	(20,298)
Total Primary Government	\$ 10,137,558	\$ 258,943	\$ 1,729,298	\$ 117,713	(8,011,306)	(20,298)	(8,031,604)

PRINCETON CHARTER SCHOOL
STATEMENT OF ACTIVITIES
JUNE 30, 2024

	Net (Expense) Revenue and Changes in Net Position			
	Capital Grants and Contributions	Governmental Activities	Business-type Activities	Total
General Revenue:				
Local Levy		\$ 7,123,589		\$ 7,123,589
Unrestricted Federal and State Aid		374,926		374,926
Miscellaneous Income		231,444		231,444
Total General Revenues		7,729,959		7,729,959
Change in Net Position		(281,347)	\$ (20,298)	(301,645)
Net Position - Beginning		3,450,340	24,281	3,474,621
Net Position - Ending		\$ 3,168,993	\$ 3,983	\$ 3,172,976

THE ACCOMPANYING NOTES TO THE BASIC FINANCIAL STATEMENTS ARE AN INTEGRAL PART OF THIS STATEMENT

FUND FINANCIAL STATEMENTS

PRINCETON CHARTER SCHOOL
BALANCE SHEET
GOVERNMENTAL FUNDS
JUNE 30, 2024

	General Fund	Special Revenue Fund	Capital Projects Fund	Total Governmental Funds
ASSETS:				
Cash and Cash Equivalents	\$ 56,261			\$ 56,261
Mortgage Loan Receivable			\$ 91,662	91,662
Tax Levy Receivable	100,993			100,993
Interfund Receivable	126,438	\$ 9,575		136,013
Receivables From Other Governments:				
State	34,602			34,602
Other Accounts Receivable	20,438			20,438
Prepaid Expenses	1,529			1,529
Restricted Cash and Cash Equivalents	105,694	9,456		115,150
Total Assets	<u>\$ 445,955</u>	<u>\$ 19,031</u>	<u>\$ 91,662</u>	<u>\$ 556,648</u>
LIABILITIES AND FUND BALANCES:				
Liabilities:				
Accounts Payable	\$ 174,440			\$ 174,440
Interfund Payable	9,575		\$ 91,662	101,237
Unearned Revenue		\$ 9,575		9,575
Intergovernmental Accounts Payable - Other	2			2
Total Liabilities	<u>184,017</u>	<u>9,575</u>	<u>91,662</u>	<u>285,254</u>
Fund Balances:				
Restricted:				
Charter School Escrow	75,000			75,000
Unemployment Compensation	30,694			30,694
Student Activities		9,456		9,456
Unassigned:				
General Fund	156,244			156,244
Total Fund Balances	<u>261,938</u>	<u>9,456</u>		<u>271,394</u>
Total Liabilities and Fund Balances	<u>\$ 445,955</u>	<u>\$ 19,031</u>	<u>\$ 91,662</u>	<u>\$ 556,648</u>

PRINCETON CHARTER SCHOOL
BALANCE SHEET
GOVERNMENTAL FUNDS
JUNE 30, 2024

Total
Governmental
Funds

Amounts Reported for *Governmental Activities* in the *Statement of Net Position* (A-1) is Different Because:

Total Fund Balances - Governmental Funds (Previous Page)	\$ 271,394
Capital Assets used in governmental activities are not financial resources and therefore are not reported in the Funds.	13,398,611
Derivative Instrument - Interest Rate Swap	264,261
A loss on refunding is reported as an expenditure in the governmental funds in the year the mortgage loans were refunded.	256,470
Certain amounts related to the Net Pension Liability are Deferred and Amortized in the Statement of Activities are not reported in the Governmental Funds:	
Deferred Outflows - Pensions	664,658
Deferred Inflows - Pensions	(176,030)
Deferred Inflow - Accumulated Increase in Fair Value of Hedging Derivatives	(264,261)
Long-Term Liabilities, including mortgage loans payable and the PERS Net Pension Liability, are not due and payable in the current period and therefore are not reported as liabilities in the Governmental Funds.	<u>(11,246,110)</u>
Net Position of Governmental Activities (Exhibit A-1)	<u><u>\$ 3,168,993</u></u>

THE ACCOMPANYING NOTES TO THE BASIC FINANCIAL STATEMENTS
ARE AN INTEGRAL PART OF THIS STATEMENT

PRINCETON CHARTER SCHOOL
STATEMENT OF REVENUE, EXPENDITURES, AND CHANGES IN FUND BALANCES
GOVERNMENTAL FUNDS
JUNE 30, 2024

	General Fund	Special Revenue Fund	Capital Projects Fund	Total Governmental Funds
REVENUE:				
Local Sources:				
Charter School Aid	\$ 7,123,589			\$ 7,123,589
Rents and Royalties	41,077			41,077
Private Contributions	169,551			169,551
Restricted Miscellaneous		\$ 25,878		25,878
Unrestricted Miscellaneous	20,816			20,816
Total - Local Sources	7,355,033	25,878		7,380,911
State Sources	2,310,673	117,713		2,428,386
Federal Sources		106,346		106,346
Total Revenue	9,665,706	249,937		9,915,643
EXPENDITURES				
Current:				
Regular Instruction	3,945,308	43,559		3,988,867
Special Education Instruction		87,530		87,530
Other Instruction	17,305			17,305
Student & Instruction Related Services	460,485	10,000		470,485
General Administrative Services	988,014			988,014
School Administrative Services	251			251
Central Services	185,604			185,604
Administrative Information Technology	163,268			163,268
Plant Operations and Maintenance	595,170			595,170
Pupil Transportation	34,511			34,511
Employee Benefits	2,584,006			2,584,006
Capital Outlay	680,685	117,713		798,398
Total Expenditures	9,654,607	258,802		9,913,409
Excess/Deficit of Revenue				
Over/(Under) Expenditures	11,099	(8,865)		2,234
OTHER FINANCING SOURCES/(USES):				
Transfers	10,865		\$ (10,865)	
Total Other Financing Sources/(Uses)	10,865		(10,865)	
Net Change in Fund Balances	21,964	(8,865)	(10,865)	2,234
Fund Balance—July 1	239,974	18,321	10,865	269,160
Fund Balance—June 30	\$ 261,938	\$ 9,456	\$ - 0 -	\$ 271,394

THE ACCOMPANYING NOTES TO THE BASIC FINANCIAL STATEMENTS
ARE AN INTEGRAL PART OF THIS STATEMENT

PRINCETON CHARTER SCHOOL
RECONCILIATION OF THE STATEMENT OF REVENUE, EXPENDITURES,
AND CHANGES IN FUND BALANCES OF GOVERNMENTAL FUNDS
TO THE STATEMENT OF ACTIVITIES
FOR THE FISCAL YEAR ENDED JUNE 30, 2024

Total Net Change in Fund Balances - Governmental Funds (Exhibit B-2)	\$ 2,234
Amounts Reported for Governmental Activities in the Statement of Activities (A-2) are Different Because:	
Capital outlays are reported in governmental funds as expenditures. However, in the statement of activities, the cost of those assets is allocated over their estimated useful lives as depreciation expense. This is the amount by which depreciation expense differs from capital outlays in the period.	
Depreciation Expense	(607,817)
Capital Asset Additions	534
	<u>(607,283)</u>
Repayment of the mortgage loan is an expenditure in the governmental funds, but the repayment reduces long-term liabilities in the statement of net position and is not reported in the statement of activities.	389,168
Governmental funds report the effect of refunding transactions when the debt is first issued, but the amounts are deferred and amortized in the statement of activities. This represents the current year amortization related to the deferred loss on refunding.	(39,970)
The net pension liability reported in the statement of activities does not require the use of current financial resources and is not reported as an expenditure in the Governmental Funds:	
Change in Net Pension Liability	(173,502)
Change in Deferred Outflows	(29,784)
Change in Deferred Inflows	<u>177,790</u>
Change in Net Position - Governmental Funds (Exhibit A-2)	<u>\$ (281,347)</u>

THE ACCOMPANYING NOTES TO THE BASIC FINANCIAL STATEMENTS
 ARE AN INTEGRAL PART OF THIS STATEMENT

PRINCETON CHARTER SCHOOL
PROPRIETARY FUNDS
STATEMENT OF NET POSITION
JUNE 30, 2024

	Business-Type Activities		
	Enterprise Funds		
	Food Service Program Major Fund	Total Non-Major Fund	Total All Funds
<u>ASSETS:</u>			
Current Assets:			
Accounts Receivable:			
State	\$ 63		\$ 63
Federal	729		729
Other	25,287	\$ 14,222	39,509
Total Current Assets	26,079	14,222	40,301
Non-Current Assets:			
Capital Assets	18,820		18,820
Less: Accumulated Depreciation	(14,837)		(14,837)
Total Non-Current Assets	3,983		3,983
Total Assets	30,062	14,222	44,284
<u>LIABILITIES:</u>			
Current Liabilities:			
Interfund Payable	20,554	14,222	34,776
Unearned Revenue - Prepaid Sales	5,525		5,525
Total Current Liabilities	26,079	14,222	40,301
<u>NET POSITION:</u>			
Investment in Capital Assets	3,983		3,983
Total Net Position	\$ 3,983	\$ - 0 -	\$ 3,983

THE ACCOMPANYING NOTES TO THE BASIC FINANCIAL STATEMENTS ARE
AN INTEGRAL PART OF THIS STATEMENT

PRINCETON CHARTER SCHOOL
PROPRIETARY FUNDS
STATEMENT OF REVENUE, EXPENSES
AND CHANGES IN FUND NET POSITION
FOR THE FISCAL YEAR ENDED JUNE 30, 2024

	Business-Type Activities		
	Enterprise Funds		
	Food Service Program Major Fund	Total Non-Major Fund	Total All Funds
Operating Revenue			
Local Sources:			
Daily Sales:			
Reimbursable Programs	\$ 185,354		\$ 185,354
Program Fees		\$ 72,454	72,454
Total Operating Revenue	185,354	72,454	257,808
Operating Expenses:			
Cost of Sales - Reimbursable Programs	71,253		71,253
Salaries, Benefits & Payroll Taxes		55,716	55,716
Supplies and Materials	91,529		91,529
Depreciation	1,258		1,258
Miscellaneous	178		178
Total Operating Expenses	222,558	72,727	295,285
Operating Income/(Loss)	(37,204)	(273)	(37,477)
Non-Operating Revenue:			
State Sources:			
State School Lunch Program	1,311		1,311
New Jersey Expanded Income Eligibility - Lunch	304		304
Federal Sources:			
National Lunch Program	13,396		13,396
Healthy Hunger Free Kids Act	1,515		1,515
COVID-19 Pandemic Electronic Benefit Transfer	653		653
Total Non-Operating Revenue	17,179		17,179
Change in Net Position	(20,025)	(273)	(20,298)
Net Position - Beginning of Year	24,008	273	24,281
Net Position - End of Year	\$ 3,983	\$ - 0 -	\$ 3,983

THE ACCOMPANYING NOTES TO THE BASIC FINANCIAL STATEMENTS ARE
 AN INTEGRAL PART OF THIS STATEMENT

PRINCETON CHARTER SCHOOL
PROPRIETARY FUNDS
STATEMENT OF CASH FLOWS
FOR THE FISCAL YEAR ENDED JUNE 30, 2024

	Business-Type Activities		
	Enterprise Funds		
	Food Service Program Major Fund	Total Non-Major Fund	Total All Funds
Cash Flows from Operating Activities:			
Receipts from Customers	\$ 160,764		\$ 160,764
Receipts from Program Revenues		\$ 62,635	62,635
Payments to Food Service Vendor	(71,253)		(71,253)
Payments to Suppliers	(91,529)		(91,529)
Payments of Salaries, Benefits & Payroll Taxes		(55,716)	(55,716)
Payments for Rent	(39,365)		(39,365)
Payments for Miscellaneous Expenses	(178)		(178)
Payments for Purchased Professional Services	(18,975)	(17,010)	(35,985)
Net Cash Provided By/(Used for) Operating Activities	(60,536)	(10,091)	(70,627)
Cash Flows from Noncapital Financing Activities:			
Cash Received from State and Federal Reimbursements	17,035		17,035
Interfund Advanced/(Returned)	20,554	10,091	30,645
Net Cash Provided by Noncapital Financing Activities	37,589	10,091	47,680
Net Increase/(Decrease) in Cash and Cash Equivalents	(22,947)	- 0 -	(22,947)
Cash and Cash Equivalents, July 1	22,947	- 0 -	22,947
Cash and Cash Equivalents, June 30	\$ - 0 -	\$ - 0 -	\$ - 0 -
Reconciliation of Operating Income/(Loss) to			
Net Cash Provided By/(Used for) Operating Activities:			
Operating Income/(Loss)	\$ (37,204)	\$ (273)	\$ (37,477)
Adjustment to Reconcile Operating Income/(Loss)			
to Cash Provided By/(Used for) Operating Activities:			
Depreciation	1,258		1,258
Changes in Assets and Liabilities:			
(Increase)/Decrease in Other Accounts Receivable	(20,427)	(9,818)	(30,245)
(Increase)/Decrease in Prepaid Sales	(4,163)		(4,163)
Net Cash Provided By/(Used for) Operating Activities	\$ (60,536)	\$ (10,091)	\$ (70,627)

THE ACCOMPANYING NOTES TO THE BASIC FINANCIAL STATEMENTS ARE
 AN INTEGRAL PART OF THIS STATEMENT

PRINCETON CHARTER SCHOOL
NOTES TO THE BASIC FINANCIAL STATEMENTS
FOR THE FISCAL YEAR ENDED JUNE 30, 2024

NOTE 1. SUMMARY OF SIGNIFICANT ACCOUNTING POLICIES

The financial statements of the Board of Trustees (the "Board") of the Princeton Charter School (the "Charter School") have been prepared in conformity with generally accepted accounting principles (GAAP) as applied to government units. The Governmental Accounting Standards Board (GASB) is the accepted standard-setting body for establishing governmental accounting and financial reporting principles. The more significant of the Board of Trustees' accounting policies are described below.

A. Reporting Entity:

The Charter School is an instrumentality of the State of New Jersey, established to function as an educational institution. The Board of Trustees consists of volunteer officials and is responsible for the fiscal control of the Charter School. A Head of School is appointed by the Board of Trustees and is responsible for the administrative control of the Charter School.

Governmental Accounting Standards Board ("GASB") Codification Section 2100, "Defining the Financial Reporting Entity" establishes standards to determine whether a governmental component unit should be included in the financial reporting entity. Component units are legally separate organizations for which the elected officials of the primary government are financially accountable. In addition, component units can be other organizations for which the nature and significance of their relationship with a primary government are such that exclusion would cause the reporting entity's financial statements to be misleading. The primary government is financially accountable if it appoints a voting majority of the organization's governing body and (1) it is able to impose its will on that organization or (2) there is a potential for the organization to provide specific financial benefits to, or impose specific financial burdens on, the primary government. A legally separate, tax-exempt organization should be reported as a component unit of a reporting entity if all of the following criteria are met: (1) The economic resources received or held by the separate organization are entirely or almost entirely for the direct benefit of the primary government, its component units, or its constituents. (2) The primary government, or its component units, is entitled to, or has the ability to otherwise access, a majority of the economic resources received or held by the separate organization. (3) The economic resources received or held by an individual organization that the specific primary government, or its component units, is entitled to, or has the ability to otherwise access, are significant to that primary government. There were no additional entities required to be included in the reporting entity under the criteria as described above, in the current fiscal year. Furthermore, the Charter School is not includable in any other reporting entity on the basis of such criteria.

B. Basis of Presentation:

Charter School-Wide Financial Statements:

The Statement of Net Position and the Statement of Activities present financial information about the Charter School's Governmental and Business-type activities. These statements include the financial activities of the overall Charter School in its entirety. Eliminations have been made to minimize the double counting of internal transactions. These statements distinguish between governmental and business type activities of the Charter School. Governmental activities generally are financed through taxes, intergovernmental revenue and other non-exchange transactions. Business type activities are financed in part by fees charged to external parties.

PRINCETON CHARTER SCHOOL
NOTES TO THE BASIC FINANCIAL STATEMENTS
FOR THE FISCAL YEAR ENDED JUNE 30, 2024
(Continued)

NOTE 1. SUMMARY OF SIGNIFICANT ACCOUNTING POLICIES (Cont'd)

B. Basis of Presentation: (Cont'd)

Charter School-Wide Financial Statements: (Cont'd)

The Statement of Activities presents a comparison between direct expenses and program revenue for each function of the Charter School's Governmental activities. Direct expenses are those that are specifically associated with and are clearly identifiable to a particular function. Indirect expenses are allocated to the functions using an appropriate allocation method or association with the specific function. Indirect expenses include health benefits, employer's share of payroll taxes, compensated absences and tuition reimbursements.

Program revenue includes (a) charges paid by the recipients of goods or services offered by the programs, and (b) grants and contributions that are restricted to meeting the operational or capital requirements of a particular program. Revenue that is not classified as program revenue, including all taxes, is presented as general revenue. The comparison of direct expenses with program revenues identifies the extent to which each government function is self-financing or draws from the general revenues of the Charter School.

Fund Financial Statements:

During the period, the Charter School segregates transactions related to certain Charter School functions or activities in separate funds in order to aid financial management and to demonstrate legal compliance. The fund financial statements provide information about the Charter School's funds. Separate statements for each fund category – *governmental and proprietary* – are presented. The New Jersey Department of Education (NJDOE) has elected to require New Jersey schools to treat each governmental fund as a major fund in accordance with the option noted in GASB No. 34, paragraph 76. The NJDOE believes that the presentation of all funds as major is important for public interest and to promote consistency among school financial reporting models.

The Charter School reports the following Governmental Funds:

General Fund: The General Fund is the general operating fund of the Charter School and is used to account for and report all expendable financial resources not accounted for in another fund. Included are certain expenditures for vehicles and movable instructional or non-instructional equipment which are classified in the capital outlay sub-fund.

As required by NJDOE, the Charter School includes budgeted capital outlay in this fund. GAAP, as it pertains to governmental entities, states that general fund resources may be used to directly finance capital outlays for long-lived improvements as long as the resources in such cases are derived exclusively from unrestricted revenue. Resources for budgeted capital outlay purposes are normally derived from State of New Jersey Aid, school taxes and appropriated fund balance. Expenditures are those that result in the acquisition of or additions to capital assets for land, existing buildings, improvements of grounds, construction of buildings, additions to or remodeling of buildings and the purchase of built-in equipment. These resources can be transferred from and to Current Expense by Board resolution.

Special Revenue Fund: The Special Revenue Fund is used to account for the proceeds of specific revenue from state and federal governments (other than major capital projects or debt service funds) and local appropriations that are legally restricted or committed to expenditures for specified purposes.

PRINCETON CHARTER SCHOOL
NOTES TO THE BASIC FINANCIAL STATEMENTS
FOR THE FISCAL YEAR ENDED JUNE 30, 2024
(Continued)

NOTE 1. SUMMARY OF SIGNIFICANT ACCOUNTING POLICIES (Cont'd)

B. Basis of Presentation: (Cont'd)

Charter School-Wide Financial Statements: (Cont'd)

Capital Projects Fund: The Capital Projects Fund is used to account for and report financial resources that are restricted, committed, or assigned to expenditure for capital outlays, including the acquisition or construction of capital facilities and other capital assets or lease assets or subscription assets (other than those financed by proprietary funds). The financial resources are derived from financing that is authorized by the Board of Trustees.

The Charter School reports the following proprietary funds:

Enterprise Funds: The Enterprise Funds account for all revenue and expenses pertaining to the Charter School's cafeteria and student programs. The food service program fund and school programs fund are utilized to account for operations that are financed and operated in a manner similar to private business enterprises. The stated intent is that the cost (i.e., expenses including depreciation and indirect costs) of providing goods or services to the students on a continuing basis are financed or recovered primarily through user charges.

C. Measurement Focus and Basis of Accounting

The Charter School-Wide financial statements and the Proprietary Fund financial statements are reported using the economic resources measurement focus and the accrual basis of accounting. Revenue is recorded when earned and expenses are recorded at the time liabilities are incurred, regardless of when the related cash transaction takes place. Non-exchange transactions, in which the Charter School gives or receives value without directly receiving or giving equal value in exchange, include property taxes, grants, entitlements and donations. On the accrual basis, revenue from property taxes is recognized in the period for which the taxes are levied. Revenue from grants, entitlements and donations is recognized in the period in which all eligibility requirements have been satisfied.

The Governmental Fund financial statements are reported using the current financial resources measurement focus and the modified accrual basis of accounting. Under this method, revenue is recognized when measurable and available. The Charter School considers all revenue reported in the Governmental Funds to be available if the revenue is collected within sixty days after the end of the fiscal year. Expenditures are recorded when the related fund liability is incurred, except for principal and interest on general long-term debt, claims and judgments, and compensated absences which are recognized as expenditures to the extent they have matured. Capital asset, lease asset, or subscription asset acquisitions are reported as expenditures in Governmental Funds. Proceeds of general long-term debt and acquisitions under financed purchases are reported as other financing sources.

It is the Charter School's policy that when an expenditure is incurred for purposes for which both restricted and unrestricted (committed, assigned or unassigned) amounts are available, to apply restricted resources first followed by unrestricted resources. Similarly, within unrestricted fund balance, it is the Charter School's policy to apply committed resources first followed by assigned resources and then unassigned resources when an expenditure is incurred for purposes for which amounts in any of those unrestricted fund balance classifications could be used.

PRINCETON CHARTER SCHOOL
NOTES TO THE BASIC FINANCIAL STATEMENTS
FOR THE FISCAL YEAR ENDED JUNE 30, 2024
(Continued)

NOTE 1. SUMMARY OF SIGNIFICANT ACCOUNTING POLICIES (Cont'd)

C. Measurement Focus and Basis of Accounting (Cont'd)

Under the terms of grant agreements, the Charter School may fund certain programs by a combination of specific cost-reimbursement grants, categorical block grants and general revenue. Therefore, when program expenses are incurred, both restricted and unrestricted net position may be available to finance the program. It is the Charter School's policy to first apply cost-reimbursement grant resources to such programs, followed by general revenue.

D. Budgets/Budgetary Control:

Annual appropriated budgets are prepared in the spring of each year for the General and Special Revenue Funds. Budgets are prepared using the modified accrual basis of accounting. The budget for the fiscal year ended June 30, 2024 was submitted to the County office and was approved by a vote of the Board of Trustees. The legal level of budgetary control is established at line item accounts within each fund. Line item accounts are defined as the lowest (most specific) level of detail as established pursuant to the minimum Charter of accounts referenced in N.J.A.C. 6:20-2A.2(m)1. All budget amendments/transfers must be made by resolution of the Board of Trustees. All budgetary amounts presented in the accompanying supplementary information reflect the original budget and the amended budget (which have been adjusted for legally authorized revisions of the annual budgets during the year).

Formal budgetary integration into the accounting system is employed as a management control device during the year. For Governmental Funds, there are no substantial differences between the budgetary basis of accounting and generally accepted accounting principles, except for the Special Revenue Fund as noted below. Encumbrance accounting is also employed as an extension of formal budgetary integration in the Governmental Fund types. Unencumbered appropriations lapse at the end of the fiscal year.

The accounting records of the Special Revenue Fund are maintained on the grant accounting budgetary basis except for student activities. The grant accounting budgetary basis differs from GAAP in that the grant accounting budgetary basis recognizes encumbrances as expenditures and recognizes the related revenue, whereas the GAAP basis does not. Sufficient supplemental records are maintained to allow for the presentation of GAAP basis financial reports.

	General Fund	Special Revenue Fund
Sources/Inflows of Resources:		
Actual Amounts (Budgetary Basis) "Revenue"		
from the Budgetary Comparison Schedule	\$ 9,665,706	\$ 249,937
Total Revenues as Reported on the Statement of Revenues,		
Expenditures and Changes in Fund Balances - Governmental Funds	<u>\$ 9,665,706</u>	<u>\$ 249,937</u>

PRINCETON CHARTER SCHOOL
NOTES TO THE BASIC FINANCIAL STATEMENTS
FOR THE FISCAL YEAR ENDED JUNE 30, 2024
(Continued)

NOTE 1. SUMMARY OF SIGNIFICANT ACCOUNTING POLICIES (Cont'd)

D. Budgets/Budgetary Control: (Cont'd)

	General Fund	Special Revenue Fund
Uses/Outflows of Resources:		
Actual Amounts (Budgetary Basis) "Total Outflows" from the Budgetary Comparison Schedule	<u>\$ 9,654,607</u>	<u>\$ 258,802</u>
Total Expenditures as Reported on the Statement of Revenue, Expenditures, and Changes in Fund Balances - Governmental Funds	<u>\$ 9,654,607</u>	<u>\$ 258,802</u>

E. Cash and Cash Equivalents and Investments:

Cash and cash equivalents include petty cash change funds, amounts in deposit, and short-term investments with original maturities of three months or less.

New Jersey school districts and charter schools are limited as to the type of investments and types of financial institutions they may use. New Jersey Statute 18A:20-37 provides a list of permissible investments that may be purchased by New Jersey school districts and charter schools. Additionally, the Charter School has adopted a cash management plan that requires it to deposit public funds in public depositories protected from loss under the provisions of the Governmental Unit Deposit Protection Act (GUDPA). GUDPA was enacted in 1970 to protect Governmental Units from a loss of funds on deposit with a failed banking institution in New Jersey.

The Charter School generally records investments at fair value and records the unrealized gains and losses as part of investment income. Fair value is the price that would be received to sell an investment in an orderly transaction between market participants at the measurement date. The Charter School categorizes its fair value measurements within the fair value hierarchy established by generally accepted accounting principles. The hierarchy is based on the valuation inputs used to measure the fair value of the asset. Level 1 inputs are quoted prices in active markets for identical assets; Level 2 inputs are significant other observable inputs; Level 3 inputs are significant unobservable inputs.

N.J.S.A. 17:9-41 et seq. establishes the requirements for the security of deposits of governmental units. The statute requires that no governmental unit shall deposit public funds in a depository unless such funds are secured in accordance with the Act. Public depositories include Savings and Loan institutions, banks (both state and national banks) and savings banks the deposits of which are federally insured. All public depositories must pledge collateral, having a market value of at least equal to five percent of the average daily balance of collected public funds, to secure the deposits of Governmental Units. If a public depository fails, the collateral it has pledged, plus the collateral of all other public depositories, is available to pay the full amount of their deposits to the Governmental Units.

F. Interfund Transactions:

Flows of cash or goods from one fund to another without a requirement for repayment are reported as interfund transfers. Interfund transfers are reported as other financing sources/uses in Governmental Funds. Repayments from funds responsible for particular expenditures/expenses to the funds that initially paid for them are not presented in the financial statements.

PRINCETON CHARTER SCHOOL
NOTES TO THE BASIC FINANCIAL STATEMENTS
FOR THE FISCAL YEAR ENDED JUNE 30, 2024
(Continued)

NOTE 1. SUMMARY OF SIGNIFICANT ACCOUNTING POLICIES (Cont'd)

F. Interfund Transactions: (Cont'd)

On the fund financial statements, short-term interfund loans are classified as interfund receivables/payables.

G. Allowance for Uncollectible Accounts:

No allowance for uncollectible accounts has been recorded as all amounts are considered collectible.

H. Encumbrances:

Under encumbrance accounting purchase orders, contracts and other commitments for the expenditure of resources are recorded to reserve a portion of the applicable appropriation. Open encumbrances in Governmental Funds, other than the Special Revenue Fund, are reported as restricted, committed and/or assigned of fund balances at period-end as they do not constitute expenditures or liabilities but rather commitments related to unperformed contracts for goods and services.

Open encumbrances in the Special Revenue Fund for which the Charter School has received advances are reflected in the balance sheet as unearned revenue at period end.

The encumbered appropriation authority carries over into the next period. An entry will be made at the beginning of the next period to increase the appropriation reflected in the certified budget by the outstanding encumbrance amount as of the current period end.

I. Short-term Interfund Receivables/Payables:

Short-term interfund receivables/payables represent amounts that are owed, other than charges for goods or services rendered to/from a particular fund in the Charter School and that are due within one year.

J. Inventories and Prepaid Expenses:

Inventories which benefit future periods, other than those recorded in the Enterprise Fund, are recorded as expenditures during the year of purchase.

Enterprise fund inventories are valued at cost, which approximates market, using the first-in, first-out (FIFO) method. Prepaid expenses in the enterprise and general funds represent payments made to vendors for services that will benefit periods beyond June 30, 2024.

K. Capital Assets:

During the Charter School's initial year of operation, a formal system of accounting for its capital assets was established. Capital assets acquired or constructed are recorded at historical cost including ancillary charges necessary to place the asset into service. Donated capital assets are valued at acquisition cost. The cost of normal maintenance and repairs is not capitalized. The Charter School does not possess any infrastructure. The Charter School reviews capital assets for impairment.

PRINCETON CHARTER SCHOOL
NOTES TO THE BASIC FINANCIAL STATEMENTS
FOR THE FISCAL YEAR ENDED JUNE 30, 2024
(Continued)

NOTE 1. SUMMARY OF SIGNIFICANT ACCOUNTING POLICIES (Cont'd)

K. Capital Assets: (Cont'd)

The capitalization threshold (the dollar value above which asset acquisitions are added to the capital asset accounts) is \$2,000. The depreciation method is straight-line. The estimated useful lives of capital assets reported in the Charter School-Wide statements are as follows:

	<u>Estimated Useful Life</u>
Buildings and Building Improvements	50 years
Site Improvements	20 years
Furniture, Machinery and Equipment	10 to 15 years

In the Fund financial statements, capital assets used in the Governmental Fund operations are accounted for as capital outlay expenditures in the Governmental Funds upon acquisition. Capital assets are not capitalized, and related depreciation is not reported in the Fund financial statements.

L. Lease Assets

Intangible right-to-use lease assets are assets which the Charter School leases for a term of more than one year. The value of leases are determined by the net present value of the leases at the Charter School's incremental borrowing rate at the time of the lease agreement, amortized over the term of the agreement.

M. Subscription Assets

Intangible right-to-use subscription assets are subscription-based information technology arrangements (SBITA's) with subscription terms of more than one year. The value of subscription assets is determined by the sum of the subscription liability and payments made to the SBITA vendor, including capitalizable initial implementation costs, before the commencement date of the subscription term.

N. Long Term Liabilities:

In the Charter School-Wide Statement of Net Position, long-term debt and other long-term obligations would be reported as liabilities in governmental activities. Bond premiums and discounts are reported as deferred charges and amortized over the term of the related debt using the straight-line method of amortization. In the Fund financial statements, the face amount of debt issued is reported as other financing sources. Premiums received on debt issuances are reported as other financing sources while discounts on debt issuances are reported as other financing uses.

In the Charter School-Wide *Statement of Net Position*, the liabilities whose average maturities are greater than one year should be reported in two components – the amount due within one year and the amount due beyond one year.

O. Accrued Salaries and Wages:

The Charter School does not allow employees who provide services to the Charter School over the ten-month academic year the option to have their salaries evenly disbursed during the entire twelve-month year. Therefore, there are no accrued salaries and wages for this purpose at June 30, 2024.

PRINCETON CHARTER SCHOOL
NOTES TO THE BASIC FINANCIAL STATEMENTS
FOR THE FISCAL YEAR ENDED JUNE 30, 2024
(Continued)

NOTE 1. SUMMARY OF SIGNIFICANT ACCOUNTING POLICIES (Cont'd)

P. Compensated Absences:

Charter Schools account for compensated absences as directed by GASB. A liability attributable to services already rendered and not contingent on a specific event outside the control of the employer and employee is accrued as employees earn the rights to the benefits.

Employees are granted varying amounts of vacation and sick leave in accordance with the Charter School's policies and employee contracts. Upon separation, certain employees are not paid for accrued vacation per Charter School policy. Employees can also accumulate unused sick leave which will not be paid, upon the employee's retirement or separation pursuant to the Charter School's policy or employee contracts.

Q. Leases Payable

In the Charter School-wide financial statements, leases payable are reported as liabilities in the Statement of Net Position. In the Governmental Fund financial statements, the present value of lease payments is reported as other financing sources.

R. Subscriptions Payable

In the Charter School-wide financial statements, subscriptions payable are reported as liabilities in the Statement of Net Position. In the Governmental Fund financial statements, the present value of subscription payments at the Charter School's incremental borrowing rate over the subscription term is reported as other financing sources.

S. Unearned Revenue:

Unearned revenue in the Special Revenue Fund represents cash which has been received but not yet earned. See Note 1(D) regarding the Special Revenue Fund.

T. Fund Balance Appropriated:

General Fund: The \$261,938 of fund balance in the General Fund at June 30, 2024 consists of \$75,000 which is restricted for Charter School Escrow, \$30,694 which is restricted for Unemployment Compensation and \$156,244 which is unassigned.

Special Revenue Fund: The \$9,456 of fund balance in Special Revenue Fund is restricted for Student Activities.

Capital Projects Fund: The Capital Projects Fund balance at June 30, 2024 was \$ - 0 -.

PRINCETON CHARTER SCHOOL
NOTES TO THE BASIC FINANCIAL STATEMENTS
FOR THE FISCAL YEAR ENDED JUNE 30, 2024
(Continued)

NOTE 1. SUMMARY OF SIGNIFICANT ACCOUNTING POLICIES (Cont'd)

U. Net Position:

The net position is the difference between (a) assets and deferred outflows of resources and (b) liabilities and deferred inflows of resources.

A deferred outflow of resources is a consumption of net position by the Charter School that is applicable to a future reporting period. A deferred inflow of resources is an acquisition of net position by the Charter School that is applicable to a future reporting period. The Charter School had deferred inflows and outflows of resources related to pensions and a deferred outflow for the loss on the refunding of the Mortgage Loan at June 30, 2024 and a deferred inflow for the accumulated increase in fair value of hedging derivatives.

Net position is displayed in three components - net investment in capital assets; restricted and unrestricted.

The net investment in capital assets component of net position consists of capital assets, net of accumulated depreciation, lease assets, net of accumulated amortization, and subscription assets, net of accumulated amortization reduced by the outstanding balances of borrowings that are attributable to the acquisition, construction, or improvement of those assets. Deferred outflows of resources and deferred inflows of resources that are attributable to the acquisition, construction, or improvement of those assets or related debt also would be included in this component of net position.

The restricted component of net position consists of restricted assets reduced by liabilities and deferred inflows of resources related to those assets. The Charter School had \$75,000 restricted in net position for Charter School Escrow which is required by NJ Department of Education and \$30,694 for unemployment compensation in the General Fund and \$9,456 for student activities in the Special Revenue Fund.

The unrestricted component of net position is the net amount of the assets, deferred outflows of resources, liabilities, and deferred inflows of resources that are not included in the determination of net investment in capital assets or the restricted component of net position.

V. Deficit Net Position/(Fund Balance):

The Charter School had a \$457,105 deficit in its governmental activities due to recording the net pension liability and related deferred outflows and inflows. This deficit does not indicate that the Charter School is in financial difficulties and is a permitted practice under generally accepted accounting principles.

W. Fund Balance Restrictions, Commitments and Assignments:

The restricted fund balance category includes amounts that can be spent only for the specific purposes stipulated by the constitution, external resource providers, or through enabling legislation. The committed fund balance classification includes amounts that can be used only for the specific purposes determined for a formal action of the Charter School's highest level of decision-making authority. Amounts in the assigned fund balance classification are intended to be used by the government for specific purposes but do not meet the criteria to be classified as restricted or committed.

PRINCETON CHARTER SCHOOL
NOTES TO THE BASIC FINANCIAL STATEMENTS
FOR THE FISCAL YEAR ENDED JUNE 30, 2024
(Continued)

NOTE 1. SUMMARY OF SIGNIFICANT ACCOUNTING POLICIES (Cont'd)

W. Fund Balance Restrictions, Commitments and Assignments: (Cont'd)

Unassigned fund balance is the residual classification for the Charter School's General Fund and includes all spendable amounts not contained in the other classifications. In other funds, the unassigned classifications should be used only to report a deficit balance resulting from overspending for specific purposes for which amounts have been restricted, committed, or assigned.

The Charter School has restricted resources for Charter School escrow, unemployment compensation and student activities.

The Board of Trustees has the responsibility to formally commit resources for specific purposes through a motion or a resolution passed by a majority of the members of the Board of Trustees at a public meeting of that governing body. The Board of Trustees must also utilize a formal motion or a resolution passed by a majority of its members at a public meeting in order to remove or change the commitment of resources. The Charter School has committed resources in the Capital Projects fund at June 30, 2024.

The assignment of resources is generally made by the Board of Trustees through a motion, or a resolution passed by a majority of its members. These resources are intended to be used for a specific purpose. The process is not as restrictive as the commitment of resources and the Board of Trustees may allow an official of the Charter School to assign resources through policies adopted by the Board of Trustees. The Charter School has no assigned resources as of June 30, 2024.

X. Revenue - Exchange and Non-exchange Transactions:

Revenue, resulting from exchange transactions in which each party gives and receives essentially equal value, is recorded on the accrual basis when the exchange takes place. On the modified accrual basis, revenue is recorded in the period in which the resources are measurable and become available. Available means the resources will be collected within the current period or are expected to be collected soon enough thereafter to be used to pay liabilities of the current period. For the Charter School, available means within sixty days of the period end.

Non-exchange transactions, in which the Charter School receives value without directly giving equal value in return, include property taxes, grants, entitlements and donations. On the accrual basis, revenue from property taxes is recognized in the period for which the taxes are levied. Revenue from grants, entitlements and donations is recognized in the period in which all eligibility requirements have been satisfied. Eligibility requirements include timing requirements, which specify the year when the resources are required to be used or the period when use is first permitted; matching requirements, in which the Charter School must provide local resources to be used for a specified purpose; and expenditure requirements, in which the resources are provided to the Charter School on a reimbursement basis. On the modified accrual basis, revenue from non-exchange transactions must also be available before it can be recognized. Under the modified accrual basis, the following revenue sources are both measurable and available at period-end: local levy for Charter School Aid, interest and tuition.

PRINCETON CHARTER SCHOOL
NOTES TO THE BASIC FINANCIAL STATEMENTS
FOR THE FISCAL YEAR ENDED JUNE 30, 2024
(Continued)

NOTE 1. SUMMARY OF SIGNIFICANT ACCOUNTING POLICIES (Cont'd)

Y. Management Estimates:

The preparation of financial statements in conformity with GAAP requires management to make estimates and assumptions that affect the reported amounts of revenue and expenditures/expenses during the reporting period. Actual results could differ from those estimates.

Z. Interest Rate Swap Contract:

The Charter School utilizes an interest rate swap agreement (derivative financial instrument) to reduce interest rate risk. The Charter School does not hold or issue derivative financial instruments for trading purposes. In accordance with GASB, the Charter School recognizes all derivatives as either assets or liabilities and an offsetting deferred outflow or inflow in the statement of financial position and measures those instruments at fair value. Changes in the fair value of these derivatives are reported in the statement of activities. The fair value of derivative instruments is determined by utilizing forward interest rate estimates and present value techniques.

AA. Reference Rate Reform:

On March 12, 2020, the FASB issued ASU 2020-04, *Reference Rate Reform (Topic 848): Facilitation of the Effects of Reference Rate Reform on Financial Reporting*. This ASU provides temporary optional guidance to ease the potential burden in accounting for reference rate reform. The new guidance provides optional expedients and exceptions for applying generally accepted accounting principles to contract modifications and hedging relationships, subject to meeting certain criteria, that reference LIBOR or another reference rate expected to be discontinued. In December 2022, the FASB deferred the sunset date of the temporary guidance from December 31, 2022 to December 31, 2024. The ASU is intended to help stakeholders during the global market-wide reference rate transition period. The Princeton Charter School is currently evaluating the impact of the adoption of this guidance on the Princeton Charter School's financial statements.

NOTE 2. EXPLANATION OF CERTAIN DIFFERENCES BETWEEN GOVERNMENTAL FUND STATEMENTS AND CHARTER SCHOOL-WIDE STATEMENTS

Due to the differences in the measurement focus and basis of accounting used on the government fund statements and Charter School-Wide statements, certain financial transactions are treated differently. The basic financial statements contain a full reconciliation of these items.

NOTE 3. CASH AND CASH EQUIVALENTS AND INVESTMENTS

Cash and cash equivalents include petty cash, change funds, amounts in deposits, and short-term investments with original maturities of three months or less.

The Charter School classifies certificates of deposit which have original maturity dates of more than three months but less than twelve months from the date of purchase, as investments.

GASB requires disclosure of the level of custodial credit risk assumed by the Charter School in its cash, cash equivalents and investments, if those items are uninsured or unregistered. Custodial credit risk is the risk that in the event of a bank failure, the government's deposits may not be returned.

PRINCETON CHARTER SCHOOL
NOTES TO THE BASIC FINANCIAL STATEMENTS
FOR THE FISCAL YEAR ENDED JUNE 30, 2024
(Continued)

NOTE 3. CASH AND CASH EQUIVALENTS AND INVESTMENTS (Cont'd)

Interest Rate Risk – In accordance with its cash management plan, the Charter School ensures that any deposit or investment matures within the time period that approximates the prospective need for the funds, deposited or invested, so that there is not a risk to the market value of such deposits or investments.

Credit Risk – The Charter School limits its investments to those authorized in its cash management plan which are those permitted under state statute as detailed in the Investment section of this note.

Custodial Credit Risk – The Charter School's policy with respect to custodial credit risk ensures that Charter School funds are only deposited in financial institutions in which NJ school districts and charter schools are permitted to invest their funds.

Deposits:

New Jersey statutes require that school districts and charter schools deposit public funds in public depositories located in New Jersey which are insured by the Federal Deposit Insurance Corporation, the Federal Savings and Loan Insurance Corporation, or by any other agency of the United States that insures deposits made in public depositories. School districts and charter schools are also permitted to deposit public funds in the State of New Jersey Cash Management Fund.

New Jersey statutes require public depositories to maintain collateral for deposits of public funds that exceed depository insurance limits as follows:

The market value of the collateral must equal at least 5% of the average daily balance of collected public funds on deposit, and

In addition to the above collateral requirement, if the public funds deposited exceed 75% of the capital funds of the depository, the depository must provide collateral having a market value at least equal to 100% of the amount exceeding 75%.

All collateral must be deposited with the Federal Reserve Bank of New York, the Federal Reserve Bank of Philadelphia, the Federal Home Loan Bank of New York, or a banking institution that is a member of the Federal Reserve System and has capital funds of not less than \$25,000,000.

Investments:

New Jersey statutes permit the Charter School to purchase the following types of securities:

- (1) Bonds or other obligations of the United States of America or obligations guaranteed by the United States of America;
- (2) Government money market mutual funds;
- (3) Any obligation that a federal agency or a federal instrumentality has issued in accordance with an act of Congress, which security has a maturity date not greater than 397 days from the date of purchase, provided that such obligation bears a fixed rate of interest not dependent on any index or other external factor;

PRINCETON CHARTER SCHOOL
NOTES TO THE BASIC FINANCIAL STATEMENTS
FOR THE FISCAL YEAR ENDED JUNE 30, 2024
(Continued)

NOTE 3. CASH AND CASH EQUIVALENTS AND INVESTMENTS (Cont'd)

Investments: (Cont'd)

- (4) Bonds or other obligations of the school district or charter school or bonds or other obligations of the local unit or units within which the school district or charter school is located.
- (5) Bonds or other obligations, having a maturity date not more than 397 days from the date of purchase, issued by New Jersey school districts and charter schools, municipalities, counties, and entities subject to the "Local Authorities Fiscal Control Law", P.L. 1983, c.313 (C.40A:5A-1 et seq.). Other bonds or obligations having a maturity date not more than 397 days from the date of purchase may be approved by the Division of Investment in the Department of the Treasury for investment by local units;
- (6) Local government investment pools;
- (7) Deposits with the State of New Jersey Cash Management Fund established pursuant to section 1 of P.L. 1977, c.281 (C.52:18A-90.4); or
- (8) Agreements for the repurchase of fully collateralized securities if:
 - (a) the underlying securities are permitted investments pursuant to paragraphs (1) and (3) of this subsection a. or are bonds or other obligations, having a maturity date of not more than 397 days from the date of purchase, issued by New Jersey school districts or charter schools, municipalities, counties, and entities subject to the requirements of the "Local Authorities Fiscal Control Law," P.L. 1983, c. 313 (C.40A:5A-1 et seq.);
 - (b) the custody of collateral is transferred to a third party;
 - (c) the maturity of the agreement is not more than 30 days;
 - (d) the underlying securities are purchased through a public depository as defined in section 1 of P.L. 1970, c.236 (C.17:9-41); and
 - (e) a master repurchase agreement providing for the custody and security of collateral is executed; or
- (9) Deposit of funds in accordance with the following conditions:
 - (a) The funds are initially invested through a public depository as defined in section 1 of P.L. 1970, c. 236 (C.17:9-41) designated by the school district or charter school;
 - (b) The designated public depository arranges for the deposit of the funds in deposit accounts in one or more federally insured banks, savings banks or savings and loan associations or credit unions for the account of the school district or charter school;

PRINCETON CHARTER SCHOOL
NOTES TO THE BASIC FINANCIAL STATEMENTS
FOR THE FISCAL YEAR ENDED JUNE 30, 2024
(Continued)

NOTE 3. CASH AND CASH EQUIVALENTS AND INVESTMENTS (Cont'd)

Investments: (Cont'd)

- (c) 100 percent of the principal and accrued interest of each deposit is insured by the Federal Deposit Insurance Corporation or the National Credit Union Share Insurance Fund;
- (d) The designated public depository acts as custodian for the school district or charter school with respect to these deposits; and
- (e) On the same date that the school district's or charter school's funds are deposited pursuant to subparagraph (b) of this paragraph, the designated public depository receives an amount of deposits from customers of other financial institutions, wherever located, equal to the amounts of funds initially invested by the school district or charter school through the designated public depository.

As of June 30, 2024, cash and cash equivalents of the Charter School consisted of the following:

	Restricted Cash and Cash Equivalents	Unrestricted Cash and Cash Equivalents	Total
Checking & Savings Accounts	\$ 115,150	\$ 56,261	\$ 171,411

During the period ended June 30, 2024, the Charter School did not hold any investments. The carrying amount of the Charter School's cash and cash equivalents at June 30, 2024, was \$59,261 and the bank balance was \$379,942.

NOTE 4. CAPITAL ASSETS

Capital asset balances and activity for the year ended June 30, 2024 were as follows:

	Balance June 30, 2023	Increases	Decreases	Balance June 30, 2024
Governmental Activities:				
Capital Assets not being Depreciated:				
Sites (Land)	\$ 2,560,000			\$ 2,560,000
Construction in Progress	6,189,135		\$(6,189,135)	
Total Capital Assets not Being Depreciated	8,749,135		(6,189,135)	2,560,000
Capital Assets Being Depreciated:				
Site Improvements	363,917	\$ 534		364,451
Buildings and Building Improvements	12,494,219		6,189,135	18,683,354
Machinery and Equipment	1,132,972			1,132,972
Total Capital Assets Being Depreciated	13,991,108	534	6,189,135	20,180,777
Governmental Activities Capital Assets	22,740,243	534		22,740,777

PRINCETON CHARTER SCHOOL
NOTES TO THE BASIC FINANCIAL STATEMENTS
FOR THE FISCAL YEAR ENDED JUNE 30, 2024
(Continued)

NOTE 4. CAPITAL ASSETS (Cont'd)

Capital asset balances and activity for the year ended June 30, 2024 were as follows:

	Balance June 30, 2023	Increases	Decreases	Balance June 30, 2024
Governmental Activities:				
Less Accumulated Depreciation for:				
Site Improvements	\$ (261,434)	\$ (6,065)		\$ (267,499)
Buildings and Building Improvements	(7,457,213)	(579,934)		(8,037,147)
Machinery and Equipment	(1,015,702)	(21,818)		(1,037,520)
Total Accumulated Depreciation	(8,734,349)	(607,817)		(9,342,166)
Governmental Activities Capital Assets, Net of Accumulated Depreciation	14,005,894	(607,283)		13,398,611
Business Type Activities:				
Capital Assets Being Depreciated:				
Furniture and Equipment	18,820			18,820
Less Accumulated Depreciation	(13,579)	(1,258)		(14,837)
Business Type Activities Capital Assets, Net of Accumulated Depreciation	5,241	(1,258)		3,983
TOTAL CAPITAL ASSETS	\$ 14,011,135	\$ (608,541)	\$ - 0 -	\$ 13,402,594

Depreciation expense was charged to governmental functions as follows:

Regular Instruction	\$ 375,283
Other Instruction	1,646
Student and Instruction Related Services	43,802
General Administrative Services	93,981
School Administrative Services	24
Central Services	17,655
Administrative Information Technology	15,530
Plant Operations and Maintenance	56,613
Pupil Transportation	3,283
	<u>\$ 607,817</u>

PRINCETON CHARTER SCHOOL
NOTES TO THE BASIC FINANCIAL STATEMENTS
FOR THE FISCAL YEAR ENDED JUNE 30, 2024
(Continued)

NOTE 5. LONG-TERM LIABILITIES

During the fiscal year ended June 30, 2024, the following changes occurred in liabilities reported in the Charter School-wide financial statements:

	Balance June 30, 2023	Accrued	Retired	Balance June 30, 2024
Mortgage Loans Payable	\$ 10,276,831		\$ 389,168	\$ 9,887,663
Net Pension Liability	1,184,945	\$ 173,502		1,358,447
Total Long-Term Liabilities	<u>\$ 11,461,776</u>	<u>\$ 173,502</u>	<u>\$ 389,168</u>	<u>\$ 11,246,110</u>

A. Mortgage Loans Payable

The \$7,391,000 loan requires monthly payments of principal and interest through call on June 17, 2035, should the bank exercise this right, then all unpaid principal and interest is due, otherwise payments continue until 2040. Interest accrues at a variable rate based on the one-month Secured Overnight Financing Rate (SOFR) (5.33643% at June 30, 2024). The Charter School entered into an interest rate swap agreement with the Peapack-Gladstone Bank for the first twenty years to reduce the impact of changes in the interest rate on this variable rate loan. The swap has a fixed rate of 3.12%. The fair market value of the interest rate swap at June 30, 2024 is \$264,261 which is reflected as a deferred inflow and a non-current asset on the Statement of Net Position. The repayment of the loan is based on a 25-year amortization schedule with a loan term of 20 years ending in the 2034/2035 fiscal year.

The \$365,000 loan requires monthly payments of principal and interest through maturity on July 1, 2035 when all unpaid principal and interest is due. Interest accrues at a variable rate based upon the SOFR Chicago Mercantile Exchange rate plus 2.25%.

The Charter School had loans payable as of June 30, 2024 as follows:

Purpose	Final Maturity	Interest Rate	Amount
Mortgage Loan	06/17/35	3.12%	\$ 5,464,949
Mortgage Loan	7/1/2035	3.98246%	233,600
Expansion and Renovation Mortgage	12/01/27	3.50%	4,189,114
			<u>\$ 9,887,663</u>

PRINCETON CHARTER SCHOOL
NOTES TO THE BASIC FINANCIAL STATEMENTS
FOR THE FISCAL YEAR ENDED JUNE 30, 2024
(Continued)

NOTE 5. LONG-TERM LIABILITIES (Cont'd)

A. Mortgage Loans Payable (Cont'd)

Principal and interest due on the mortgage loans outstanding are as follows:

<u>Fiscal Year Due</u>	<u>Principal</u>	<u>Interest*</u>	<u>Total</u>
2025	\$ 403,637	\$ 324,270	\$ 727,907
2026	417,670	310,700	728,370
2027	432,207	297,078	729,285
2028	4,077,245	150,217	4,227,462
2029	310,367	152,098	462,465
2030 - 2034	1,704,822	602,971	2,307,793
2035 - 2036	2,541,715	75,389	2,617,104
	<u>\$ 9,887,663</u>	<u>\$ 2,252,453</u>	<u>\$ 12,529,284</u>

* - Interest on the remaining \$248,200 of mortgage loan payable is variable and is based on the rate at June 30, 2024. Thus, the actual interest paid may be different than the amount presented above.

The loans are collateralized by all property of the Charter School and an assignment of any leases and rents. The Charter School continues to have a line of credit with no outstanding amount.

The loan agreement with the Bank contains a debt service coverage ratio test related to the mortgage loans as follows:

	<u>2024</u>	<u>2023</u>	<u>2022</u>	<u>Average</u>	<u>Use</u>
Change in Net Position	\$ (157,565)	\$ (112,361)	\$ 426,217		
Add back:					
Interest Expense	327,996	392,014	342,226		
Depreciation	484,035	482,715	479,802		
Amortized Loss on Refunding	39,970	39,970	39,970		
Net Pension Liability & Related Deferred Inflows & Outflows	(25,496)	55,721	99,880		
EBIDA	<u>\$ 668,940</u>	<u>\$ 858,059</u>	<u>\$ 1,388,095</u>	<u>\$ 971,698</u>	<u>\$ 971,698</u>
Current Year Principal Payments					352,155
Interest Expense (Current Reporting Period)					327,996
					<u>680,151</u>
				Ratio	1.43
				Benchmark	1.05
				Result	PASS

PRINCETON CHARTER SCHOOL
NOTES TO THE BASIC FINANCIAL STATEMENTS
FOR THE FISCAL YEAR ENDED JUNE 30, 2024
(Continued)

NOTE 5. LONG-TERM LIABILITIES (Cont'd)

A. Mortgage Loans Payable (Cont'd)

For the fiscal year ending June 30, 2024, the Charter School was in compliance with the debt service coverage ratio.

The Charter School issued a \$4,500,000 mortgage for the Expansion and Renovation of Princeton Charter School Project as of June 30, 2021. As of June 30, 2024, the Charter School has drawn down \$4,500,000 on the project, which was largely completed by December 31, 2023. The draw down period ended December 31, 2021, with interest only payments at a fixed rate of 3.50%. Principal and interest payments began in 2022 with amortization of 24 years after the initial offering period at which point the loan converted to a 6-year loan with a final maturity date of December 1, 2027.

B. Loss on Refunding

The 2015 refunding of the Charter School's outstanding mortgage debt resulted in a loss on refunding of \$616,200. In accordance with GASB, the loss is classified as a deferred outflow of resources. The deferred outflow of resources is amortized as a component of interest expense over the shorter of the life of the old or new debt. This deferred outflow of resources will be recognized in interest expense as follows for the fiscal years ending June 30:

2025	\$ 39,970
2026	39,970
2027	39,970
2028	39,970
2029	39,970
2030 - 2031	<u>56,620</u>
	<u>\$ 256,470</u>

C. Net Pension Liability:

The Public Employees' Retirement System's (PERS) net pension liability of the governmental fund types is recorded in the current and long-term liabilities and will be liquidated by the General Fund. The current portion of the net pension liability at June 30, 2024 is \$-0- and the long-term portion is \$1,358,447. See Note 6 for further information on the PERS.

NOTE 6. PENSION PLANS

Substantially all the Charter School's employees participate in one of the two contributory, defined benefit public employee retirement systems: the Teachers' Pension and Annuity Fund (TPAF) or the Public Employee's Retirement System (PERS) of New Jersey; or the Defined Contribution Retirement Program (DCRP), a tax-qualified defined contribution money purchase pension plan under Internal Revenue Code (IRC) 401(a).

PRINCETON CHARTER SCHOOL
NOTES TO THE BASIC FINANCIAL STATEMENTS
FOR THE FISCAL YEAR ENDED JUNE 30, 2024
(Continued)

NOTE 6. PENSION PLANS (Cont'd)

A. Public Employees Retirement System (PERS)

Plan Description

The State of New Jersey, Public Employees' Retirement System (PERS) is a cost-sharing multiple-employer defined benefit pension plan administered by the State of New Jersey, Division of Pensions and Benefits (the Division). For additional information about the PERS, please refer to the Division's annual financial statements which can be found at www.state.nj.us/treasury/pensions/annual-reports.shtml.

Benefits Provided

The vesting and benefit provisions are set by N.J.S.A. 43:15A. PERS provides retirement, death and disability benefits. All benefits vest after ten years of service. The following represents the membership tiers for PERS:

The following represents the membership tiers for PERS:

<u>Tier</u>	<u>Definition</u>
1	Members who were enrolled prior to July 1, 2007
2	Members who were eligible to enroll on or after July 1, 2007 and prior to November 2, 2008
3	Members who were eligible to enroll on or after November 2, 2008 and prior to May 22, 2010
4	Members who were eligible to enroll on or after May 22, 2010 and prior to June 28, 2011
5	Members who were eligible to enroll on or after June 28, 2011

Service retirement benefits of 1/55th of final average salary for each year of service credit is available to Tiers 1 and 2 members upon reaching age 60 and to Tier 3 members upon reaching age 62. Service retirement benefits of 1/60th of final average salary for each year of service credit is available to Tier 4 members upon reaching age 62 and to Tier 5 members upon reaching age 65. Early retirement benefits are available to Tiers 1 and 2 members before reaching age 60, to Tiers 3 and 4 with 25 or more years of service credit before age 62 and Tier 5 with 30 or more years of service credit before age 65. Benefits are reduced by a fraction of a percent for each month that a member retires prior to the age at which a member can receive full early retirement benefits in accordance with their respective tier. Tier 1 members can receive an unreduced benefit from age 55 to age 60 if they have at least 25 years of service. Deferred retirement is available to members who have at least 10 years of service credit and have not reached the service retirement age for the respective tier.

Contributions

The contribution policy for PERS is set by N.J.S.A. 43:15A and requires contributions by active members and contributing members. State legislation has modified the amount that is contributed by the State. The State's pension contribution is based on an actuarially determined amount, which includes the employer portion of the normal cost and an amortization of the unfunded accrued liability. Funding for noncontributory group insurance benefits is based on actual claims paid.

PRINCETON CHARTER SCHOOL
NOTES TO THE BASIC FINANCIAL STATEMENTS
FOR THE FISCAL YEAR ENDED JUNE 30, 2024
(Continued)

NOTE 6. PENSION PLANS (Cont'd)

A. Public Employees' Retirement System (PERS) (Cont'd)

Contributions (Cont'd)

The local employers' contribution amounts are based on an actuarially determined rate which includes the normal cost and unfunded accrued liability. Chapter 19, P.L. 2009 provided an option for local employers of PERS to contribute 50% of the normal and accrued liability contribution amounts certified for payments due in State fiscal year 2009. Such employers will be credited with the full payment and any such amounts will not be included in their unfunded liability. The actuaries will determine the unfunded liability of those retirement systems, by employer, for the reduced normal and accrued liability contributions provided under this law. This unfunded liability will be paid by the employer in level annual payments over a period of 15 years, beginning with the payments due in the fiscal year ended June 30, 2012 and will be adjusted by the rate of return on the actuarial value of assets.

Charter School contributions to PERS amounted to \$125,349 for the current fiscal year. During the fiscal year ended June 30, 2023, the State of New Jersey contributed \$4,236 to the PERS for normal pension benefits on behalf of the District.

The employee contribution rate was 7.50% effective July 1, 2018.

Special Funding Situation

Under N.J.S.A. 43:15A-15, local participating employers are responsible for their own contributions based on actuarially determined amounts, except where legislation was passed that legally obligated the State if certain circumstances occurred. The legislation, which legally obligates the State, is Chapter 366, P.L. 2001 and Chapter 133, P.L. 2001. The amounts contributed on behalf of the local participating employers under the legislation is considered to be special funding situation as defined by GASB Statement No. 68 and the State is treated as a nonemployer contributing entity. Since the local participating employers do not contribute under the legislation directly to the plan (except for employer specific financed amounts), there is no net pension liability or deferred outflows or inflows to report in the financial statement of the local participating employers related to the legislation. However, the notes to the financial statements of the local participating employers must disclose the portion of the nonemployer contributing entity's total proportionate share of the collective net pension liability that is associated with the local participating employer. In addition, each local participating employer must disclose pension expense as well as revenue associated with the employers in an amount equal to the nonemployer contributing entity's total proportionate share of the collective pension expense associated with the local participating employer.

Pension Liabilities and Pension Expense

At June 30, 2024, the Charter School's liability was \$1,358,447 for its proportionate share of the net pension liability. The net pension liability was measured as of June 30, 2023, and the total pension liability used to calculate the net pension liability was determined by an actuarial valuation as of July 1, 2022 which was rolled forward to June 30, 2023. The Charter School's proportion of the net pension liability was based on a projection of the Charter School's long-term share of contributions to the pension plan relative to the projected contributions of all participating members, actuarially determined. At June 30, 2023, the Charter School's proportion was .0093%, which was an increase of 0.0015% from its proportion measured as of June 30, 2022.

PRINCETON CHARTER SCHOOL
NOTES TO THE BASIC FINANCIAL STATEMENTS
FOR THE FISCAL YEAR ENDED JUNE 30, 2024
(Continued)

NOTE 6. PENSION PLANS (Cont'd)

A. Public Employees' Retirement System (PERS) (Cont'd)

Pension Liabilities and Pension Expense (Cont'd)

For the fiscal year ended June 30, 2024, the Charter School recognized an actual pension expense in the amount of \$150,846 related to the District's proportionate share of the net pension liability. Additionally, for the fiscal year ended June 30, 2023, the State recognized pension expense on behalf of the District in the amount of \$4,236 and the District recognized pension expense and revenue for that same amount in the fiscal year ended June 30, 2024 financial statements.

There was no state proportionate share of net pension liability attributable to the District as of June 30, 2023.

At June 30, 2024, the Charter School reported deferred outflows of resources and deferred inflows of resources related to pensions from the following sources:

	<u>Deferral Year</u>	<u>Amortization Period in Years</u>	<u>Deferred Outflows of Resources</u>	<u>Deferred Inflows of Resources</u>
Changes in Assumptions	2019	5.21		\$ (7,380)
	2020	5.16		(67,142)
	2021	5.13	\$ 2,984	
	2022	5.04		(7,806)
			2,984	(82,328)
Changes in Proportion	2019	5.21		(1,206)
	2020	5.16		(86,943)
	2021	5.13	79,897	
	2022	5.04	358,140	
	2023	5.08	204,392	
			642,429	(88,149)
Net Difference Between	2020	5.00	21,038	
Projected and Actual	2021	5.00	(174,957)	
Investment Earnings on	2022	5.00	208,156	
Pension Plan Investments	2023	5.00	(47,981)	
			6,256	

PRINCETON CHARTER SCHOOL
NOTES TO THE BASIC FINANCIAL STATEMENTS
FOR THE FISCAL YEAR ENDED JUNE 30, 2024
(Continued)

NOTE 6. PENSION PLANS (Cont'd)

A. Public Employees' Retirement System (PERS) (Cont'd)

Pension Liabilities and Pension Expense (Cont'd)

	<u>Deferral Year</u>	<u>Amortization Period in Years</u>	<u>Deferred Outflows of Resources</u>	<u>Deferred Inflows of Resources</u>
Difference Between Expected and Actual Experience	2019	5.21	\$ 564	
	2020	5.16	3,741	
	2021	5.13		\$ (2,373)
	2022	5.04		(3,180)
	2023	5.08	8,684	
			<u>12,989</u>	<u>(5,553)</u>
District Contribution Subsequent to the Measurement Date	2023	1.00	137,884	
			<u>\$ 802,542</u>	<u>\$ (176,030)</u>

Amounts reported as deferred outflows of resources and deferred inflows of resources (excluding employer specific amounts which include changes in proportion and the Charter School's contribution subsequent to the measurement date) related to pensions will be recognized in the pension benefit as follows:

<u>Fiscal Year Ending June 30,</u>	<u>Total</u>
2024	\$ (71,721)
2025	(40,032)
2026	55,942
2027	(10,011)
2028	170
	<u>\$ (65,652)</u>

Actuarial Assumptions

The total pension liability for the June 30, 2023 measurement date was determined by an actuarial valuation as of July 1, 2022 which was rolled forward to June 30, 2023. This actuarial valuation used the following actuarial assumptions:

Inflation Rate:	
Price	2.75%
Wage	3.25%
Salary Increases	2.75 – 6.55% based on years of service
Investment Rate of Return	7.00%

PRINCETON CHARTER SCHOOL
NOTES TO THE BASIC FINANCIAL STATEMENTS
FOR THE FISCAL YEAR ENDED JUNE 30, 2024
(Continued)

NOTE 6. PENSION PLANS (Cont'd)

A. Public Employees' Retirement System (PERS) (Cont'd)

Actuarial Assumptions (Cont'd)

Pre-retirement mortality rates were based on the Pub-2010 General Below-Median Income Employee Mortality Table with an 82.2% adjustment for males and 101.4% adjustment for females, and with future improvement from the base year of 2010 on a generational basis. Post-retirement mortality rates were based on the Pub-2010 General Below-Median Income Healthy Retiree mortality table with a 91.4% adjustment for males and a 99.7% adjustment for females, and with future improvement from the base year of 2010 on a generational basis. Disability retirement rates used to value disabled retirees were based on the Pub-2010 Non-Safety Disabled Retiree mortality table with a 127.7% adjustment for males and 117.2% adjustment for females, and with future improvement from the base year of 2010 on a generational basis. Mortality improvement is based on Scale MP-2021.

The actuarial assumptions used in the July 1, 2022 valuation were based on the results of an actuarial experience study for the period July 1, 2018 to June 30, 2021.

Long Term Expected Rate of Return

In accordance with State statute, the long-term expected rate of return on pension plan investments (7.00% at June 30, 2023) is determined by the State Treasurer, after consultation with the Directors of the Division of Investments and Division of Pensions and Benefits, the Board of Trustees and the actuaries. The long-term expected rate of return was determined using a building block method in which best-estimate ranges of expected future real rates of return (expected returns, net of pension plan investment expense and inflation) are developed for each major asset class. These ranges are combined to produce the long-term expected rate of return by weighting the expected future real rates of return by the target asset allocation percentage and by adding expected inflation. Best estimates of arithmetic real rates of return for each major asset class included in PERS' target asset allocation as of June 30, 2023 are summarized in the following table:

<u>Asset Class</u>	<u>Target Allocation</u>	<u>Long-Term Expected Real Rate of Return</u>
U.S. Equity	28.00%	8.98%
Non-U.S. Developed Market Equity	12.75%	9.22%
International Small Cap Equity	1.25%	9.22%
Emerging Markets Equity	5.50%	11.13%
Private Equity	13.00%	12.50%
Real Estate	8.00%	8.58%
Real Assets	3.00%	8.40%
High Yield	4.50%	6.97%
Private Credit	8.00%	9.20%
Investment Grade Credit	7.00%	5.19%
Cash Equivalents	2.00%	3.31%
U.S. Treasuries	4.00%	3.31%
Risk Mitigation Strategies	3.00%	6.21%

PRINCETON CHARTER SCHOOL
NOTES TO THE BASIC FINANCIAL STATEMENTS
FOR THE FISCAL YEAR ENDED JUNE 30, 2024
(Continued)

NOTE 6. PENSION PLANS (Cont'd)

A. Public Employees' Retirement System (PERS) (Cont'd)

Discount Rate

The discount rate used to measure the total pension liability was 7.00% as of June 30, 2023. The projection of cash flows used to determine the discount rate assumed that contributions from plan members will be made at the current member contribution rates and that contributions from employers and the nonemployer contributing entity will be based upon 100% of the actuarially determined contributions for the State employer and 100% of actuarially determined contributions for the local employers. Based on those assumptions, the plan's fiduciary net position was projected to be available to make all projected future benefit payments of current plan members. Therefore, the long-term expected rate of return on plan investments was applied to all projected benefit payments in determining the total pension liability.

Sensitivity of the Charter School's Proportionate Share of the Net Pension Liability to Changes in the Discount Rate

The following presents the Charter School's proportionate share of the collective net pension liability as of June 30, 2023 calculated using the discount rate as disclosed below, as well as what the Charter School's proportionate share of the net pension liability would be if it were calculated using a discount rate that is 1-percentage-point lower or 1-percentage-point higher than the current rate:

	June 30, 2023		
	At 1%	At Current	At 1%
	Decrease	Discount Rate	Increase
	(6.00%)	(7.00%)	(8.00%)
District's proportionate share of the Net Pension Liability \$	1,768,409	\$ 1,358,447	\$ 1,009,515

Pension Plan Fiduciary Net Position

Detailed information about the pension plan's fiduciary net position is available in the separately issued PERS financial statements.

B. Teachers' Pension and Annuity Fund (TPAF)

Plan Description

The State of New Jersey, Teachers' Pension and Annuity Fund (TPAF) is a cost-sharing multiple-employer defined benefit pension plan with a special funding situation, by which the State of New Jersey (the State) is responsible to fund 100% of the employer contributions, excluding any local employer early retirement incentive (ERI) contributions. The TPAF is administered by the State of New Jersey Division of Pensions and Benefits (the Division). For additional information about the TPAF, please refer to the Division's annual financial statements which can be found at www.state.nj.us/treasury/pensions/annual-reports.shtml.

PRINCETON CHARTER SCHOOL
NOTES TO THE BASIC FINANCIAL STATEMENTS
FOR THE FISCAL YEAR ENDED JUNE 30, 2024
(Continued)

NOTE 6. PENSION PLANS (Cont'd)

B. Teachers' Pension and Annuity Fund (TPAF) (Cont'd)

Benefits Provided

The vesting and benefit provisions are set by N.J.S.A. 18A:66. TPAF provides retirement, death and disability benefits. All benefits vest after ten years of service. Members are always fully vested for their own contributions and, after three years of service credit, become vested for 2% of related interest earned on the contributions. In the case of death before retirement, members' beneficiaries are entitled to full interest credited to the members' accounts.

The following represents the membership tiers for TPAF:

<u>Tier</u>	<u>Definition</u>
1	Members who were enrolled prior to July 1, 2007
2	Members who were eligible to enroll on or after July 1, 2007 and prior to November 2, 2008
3	Members who were eligible to enroll on or after November 2, 2008 and prior to May 22, 2010
4	Members who were eligible to enroll on or after May 22, 2010 and prior to June 28, 2011
5	Members who were eligible to enroll on or after June 28, 2011

Service retirement benefits of 1/55th of final average salary for each year of service credit is available to Tiers 1 and 2 members upon reaching age 60 and to Tier 3 members upon reaching age 62. Service retirement benefits of 1/60th of final average salary for each year of service credit is available to Tier 4 members upon reaching age 62 and to Tier 5 members upon reaching age 65. Early retirement benefits are available to Tiers 1 and 2 members before reaching age 60, to Tiers 3 and 4 with 25 or more years of service credit before age 62 and Tier 5 before age 65 with 30 or more years of service credit. Benefits are reduced by a fraction of a percent for each month that a member retires prior to the retirement age for his/her respective tier. Deferred retirement is available to members who have at least 10 years of service credit and have not reached the service retirement age for the respective tier.

Contributions

The contribution policy for TPAF is set by N.J.S.A. 18A:66 and requires contributions by active members and contributing members. State legislation has modified the amount that is contributed by the State. The State's pension contribution is based on an actuarially determined amount which included the employer portion of the normal cost and an amortization of the unfunded accrued liability. For fiscal year 2023, the State's pension contribution was more than the actuarial determined amount.

Special Funding Situation

The employer contributions for local participating employers are legally required to be funded by the State in accordance with N.J.S.A. 18:66-33. Therefore, these local participating employers are considered to be in a special funding situation as defined by GASB Statement No. 68 and the State is treated as a nonemployer contributing entity.

PRINCETON CHARTER SCHOOL
NOTES TO THE BASIC FINANCIAL STATEMENTS
FOR THE FISCAL YEAR ENDED JUNE 30, 2024
(Continued)

NOTE 6. PENSION PLANS (Cont'd)

B. Teachers' Pension and Annuity Fund (TPAF) (Cont'd)

Special Funding Situation (Cont'd)

Since the local participating employers do not contribute directly to the plan (except for employer specific financed amounts), there is no net pension liability or deferred outflows or inflows to report in the financial statements of the local participating employers. However, the notes to the financial statements of the local participating employers must disclose the portion of the nonemployer contributing entities' total proportionate share of the net pension liability that is associated with the local participating employer. In addition, each local participating employer must recognize pension expense associated with the employer as well as revenue in an amount equal to the nonemployer contributing entities' total proportionate share of the collective pension expense associated with the local participating employer. During the fiscal year ended 2024, the State of New Jersey contributed \$1,170,605 to the TPAF for normal pension benefits on behalf of the Charter School, which is more than the contractually required contribution of \$366,897.

The employee contribution rate was 7.50% effective July 1, 2018.

Pension Liabilities, Pension Expense, and Deferred Outflows and Inflows of Resources Related to Pensions

At June 30, 2024, the State's proportionate share of the net pension liability associated with the Charter School was \$14,934,509. The net pension liability was measured as of June 30, 2023, and the total pension liability used to calculate the net pension liability was determined by an actuarial valuation as of July 1, 2022 which was rolled forward to June 30, 2023. The Charter School's proportion of the net pension liability was based on a projection of the Charter School's long-term share of contributions to the pension plan relative to the projected contributions of all participating members, actuarially determined. At June 30, 2023, the Charter School's proportion was 0.0292%, which was an increase of 0.0006% from its proportion measured as of June 30, 2022.

District's Proportionate Share of the Net Pension Liability	\$ - 0 -
State's Proportionate Share of the Net Pension Liability Associated with the District	<u>14,934,509</u>
Total	<u><u>\$ 14,934,509</u></u>

For the fiscal year ended June 30, 2023, the State recognized pension expense on behalf of the Charter School in the amount of \$366,897 and the Charter School recognized pension expense and revenue for that same amount in the fiscal year ended June 30, 2024 financial statements.

The State reported collective deferred outflows of resources and deferred inflows of resources (excluding employer specific amounts) related to pensions from the following sources:

PRINCETON CHARTER SCHOOL
NOTES TO THE BASIC FINANCIAL STATEMENTS
FOR THE FISCAL YEAR ENDED JUNE 30, 2024
(Continued)

NOTE 6. PENSION PLANS (Cont'd)

B. Teachers' Pension and Annuity Fund (TPAF) (Cont'd)

Pension Liabilities, Pension Expense, and Deferred Outflows and Inflows of Resources Related to Pensions (Cont'd)

	Year of Deferral	Amortization Period in Years	Deferred Outflows of Resources	Deferred Inflows of Resources
Changes in Assumptions	2016	8.30	\$ 391,340,712	
	2017	8.30		\$ 2,080,865,206
	2018	8.29		1,883,063,885
	2019	8.04		1,514,535,609
	2020	7.99	805,517,879	
	2021	7.93		9,179,534,541
	2022	7.83	82,066,487	
			<u>1,278,925,078</u>	<u>14,657,999,241</u>
Difference Between Expected and Actual Experience	2016	8.30		4,866,656
	2017	8.30	37,022,988	
	2018	8.29	330,339,649	
	2019	8.04		58,842,090
	2020	7.99		4,293,040
	2021	7.93	121,815,868	
	2022	7.83		15,372,285
	2023	7.93	169,161,907	
			<u>658,340,412</u>	<u>83,374,071</u>
Net Difference Between Projected and Actual Investment Earnings on Pension Plan Investments	2020	5.00	241,395,539	
	2021	5.00	(1,777,316,905)	
	2022	5.00	2,489,500,994	
	2023	6.00	(477,296,442)	
			<u>476,283,186</u>	
			<u>\$ 2,413,548,676</u>	<u>\$ 14,741,373,312</u>

Amounts reported by the State as collective deferred outflows of resources and deferred inflows of resources related to pensions will be recognized in pension expense excluding that attributable to employer-paid members contributions as follows:

PRINCETON CHARTER SCHOOL
NOTES TO THE BASIC FINANCIAL STATEMENTS
FOR THE FISCAL YEAR ENDED JUNE 30, 2024
(Continued)

NOTE 6. PENSION PLANS (Cont'd)

B. Teachers' Pension and Annuity Fund (TPAF) (Cont'd)

Pension Liabilities, Pension Expense, and Deferred Outflows and Inflows of Resources Related to Pensions
(Cont'd)

<u>Fiscal Year</u> <u>Ending June 30,</u>	<u>Total</u>
2024	\$ (3,918,676,894)
2025	(3,446,016,070)
2026	(1,604,289,401)
2027	(1,742,641,843)
2028	(1,672,806,952)
Thereafter	56,606,524
	<u>\$ (12,327,824,636)</u>

Actuarial Assumptions

The total pension liability for the June 30, 2023 measurement date was determined by an actuarial valuation as of July 1, 2022 which was rolled forward to June 30, 2023. This actuarial valuation used the following actuarial assumptions, applied to all periods in the measurement.

Inflation Rate	
Price	2.75%
Wage	3.25%
Salary Increases	2.75 – 4.25% based on years of service
Investment Rate of Return	7.00%

Pre-retirement mortality rates were based on the Pub-2010 Teachers Above-Median Income Employee mortality table with a 93.9% adjustment for males and 85.3% adjustment for females, and with future improvement from the base year of 2010 on a generational basis. Post-retirement mortality rates were based on the Pub-2010 Teachers Above-Median Income Healthy Retiree mortality table with a 114.7% adjustment for males and a 99.6% adjustment for females, and with future improvement from the base year of 2010 on a generational basis. Disability mortality rates were based on the Pub-2010 Non-Safety Disabled Retiree mortality table with a 106.3% adjustment for males and 100.3% adjustment for females, and with future improvement from the base year of 2010 on a generational basis. Mortality improvement is based on Scale MP-2021.

The actuarial assumptions used in the July 1, 2022 valuation were based on the results of an actuarial experience study for the period July 1, 2018 to June 30, 2021.

PRINCETON CHARTER SCHOOL
NOTES TO THE BASIC FINANCIAL STATEMENTS
FOR THE FISCAL YEAR ENDED JUNE 30, 2024
(Continued)

NOTE 6. PENSION PLANS (Cont'd)

B. Teachers' Pension and Annuity Fund (TPAF) (Cont'd)

Long Term Expected Rate of Return

In accordance with State statute, the long-term expected rate of return on pension plan investments (7.00% at June 30, 2023) is determined by the State Treasurer, after consultation with the Directors of the Division of Investment and Division of Pensions and Benefits, the Board of Trustees and the actuaries. The long-term expected rate of return was determined using a building block method in which best-estimate ranges of expected future real rates of return (expected returns, net of pension plan investment expense and inflation) are developed for each major asset class. These ranges are combined to produce the long-term expected rate of return by weighting the expected future real rates of return by the target asset allocation percentage and by adding expected inflation. Best estimates of arithmetic real rates of return for each major asset class included in TPAF's target asset allocation as of June 30, 2023 are summarized in the table on the following page.

<u>Asset Class</u>	<u>Target Allocation</u>	<u>Long-Term Expected Real Rate of Return</u>
U.S. Equity	28.00%	8.98%
Non-U.S. Developed Market Equity	12.75%	9.22%
International Small Cap Equity	1.25%	9.22%
Emerging Markets Equity	5.50%	11.13%
Private Equity	13.00%	12.50%
Real Estate	8.00%	8.58%
Real Assets	3.00%	8.40%
High Yield	4.50%	6.97%
Private Credit	8.00%	9.20%
Investment Grade Credit	7.00%	5.19%
Cash Equivalents	2.00%	3.31%
U.S. Treasuries	4.00%	3.31%
Risk Mitigation Strategies	3.00%	6.21%

Discount Rate – TPAF

The discount rate used to measure the total pension liability was 7.00% as of June 30, 2023. The projection of cash flows used to determine the discount rate assumed that contributions from plan members will be made at the current member contribution rates and that contributions from employers will be made based on 100% of the actuarially determined contributions for the State. Based on those assumptions, the pension plan's fiduciary net position was projected to be available to make all projected future benefit payments of current plan members. Therefore, the long-term expected rate of return on pension plan investments was applied to all projected benefit payments in determining the total pension liability.

PRINCETON CHARTER SCHOOL
NOTES TO THE BASIC FINANCIAL STATEMENTS
FOR THE FISCAL YEAR ENDED JUNE 30, 2024
(Continued)

NOTE 6. PENSION PLANS (Cont'd)

B. Teachers' Pension and Annuity Fund (TPAF) (Cont'd)

Sensitivity of the Charter School's Proportionate Share of the Net Pension Liability to Changes in the Discount Rate

The following presents the State's proportionate share of the net pension liability associated with the Charter School as of June 30, 2023 calculated using the discount rate as disclosed above, as well as what the State's net pension liability would be if it were calculated using a discount rate that is 1-percentage-point lower or 1-percentage-point higher than the current rate:

	June 30, 2023		
	At 1% Decrease (6.00%)	At Current Discount Rate (7.00%)	At 1% Increase (8.00%)
State's Proportionate Share of the Net Pension Liability Associated with the District	\$ 17,610,497	\$ 14,934,509	\$ 12,680,692

Pension Plan Fiduciary Net Position - TPAF

Detailed information about the TPAF's fiduciary net position is available in the separately issued TPAF financial statements.

C. Defined Contribution Retirement Program (DCRP)

Prudential Financial jointly administers the DCRP investments with the NJ Division of Pensions and Benefits. If an employee is ineligible to enroll in the PERS or TPAF, the employee may be eligible to enroll in the DCRP. DCRP provides eligible members with a tax-sheltered, defined contribution retirement benefit, along with life insurance and disability coverage. Vesting is immediate upon enrollment for members of the DCRP.

The State of New Jersey, Department of the Treasury, Division of Pensions and Benefits, issues publicly available financial reports that include the financial statements and required supplementary information of the DCRP. The financial reports may be obtained by writing to the State of New Jersey, Department of the Treasury, Division of Pensions and Benefits, PO Box 295, Trenton, New Jersey, 08625-0295.

Employers are required to contribute at an actuarially determined rate. Employee contributions are based on percentages of 5.50% for DCRP of employees' annual compensation, as defined. The DCRP was established July 1, 2007, under the provisions of Chapter 92, P.L. 2007 and Chapter 103, P.L. 2007 and expanded under the provisions of Chapter 89, P.L. 2008. Employee contributions for DCRP are matched by a 3% employer contribution.

For DCRP, the Charter School recognized pension expense of \$3,378 for the year ended June 30, 2024. Employee contributions to DCRP amounted to \$5,362 for the year ended June 30, 2024.

PRINCETON CHARTER SCHOOL
NOTES TO THE BASIC FINANCIAL STATEMENTS
FOR THE FISCAL YEAR ENDED JUNE 30, 2024
(Continued)

NOTE 7. CONTINGENT LIABILITIES

Grant Programs

The Charter School participates in state and federally assisted grant programs. The programs are subject to program compliance audits by grantors or their representatives. The Charter School is potentially liable for expenditures which may be disallowed pursuant to terms of these grant programs. Management is not aware of any material items of noncompliance which would result in the disallowance of program expenditures.

Litigation

The Charter School is periodically involved in lawsuits and estimates that any potential claims against it resulting from such litigation and not covered by insurance would not materially adversely affect the financial position of the Charter School.

Encumbrances

At June 30, 2024, the Charter School had no encumbrances.

NOTE 8. DEFERRED COMPENSATION

The Charter School offers its employees a deferred compensation plan created in accordance with Internal Revenue Code Section 403(b). The plan, which is administered by the Charter School and TIAA CREF, permits participants to defer a portion of their salary until future years. Amounts deferred under the plan are not available to employees until termination, retirement, death or unforeseeable emergency.

NOTE 9. ECONOMIC DEPENDENCY

The Charter School receives a substantial amount of its support from state, federal and local governments. A significant reduction in the level of support, if this were to occur, may have an effect on the Charter School's programs and activities.

NOTE 10. ACCOUNTS PAYABLE

At year end June 30, 2024, the Charter School has the following accounts payable:

	Governmental Funds General Fund	Charter School Contribution Subsequent to Measurement Date	Total Governmental Activities
Accounts Payable - Vendors	\$ 62,250		\$ 62,250
Payroll Deductions and Withholdings	112,190		112,190
State of New Jersey		\$ 137,884	137,884
	<u>\$ 174,440</u>	<u>\$ 137,884</u>	<u>\$ 312,324</u>

PRINCETON CHARTER SCHOOL
NOTES TO THE BASIC FINANCIAL STATEMENTS
FOR THE FISCAL YEAR ENDED JUNE 30, 2024
(Continued)

NOTE 11. RISK MANAGEMENT

The Charter School is exposed to various risks of loss related to torts; theft of, damage to, and destruction of assets, errors and omissions; injuries to employees; and natural disasters. The Charter School provides employees with health benefit coverage through the State of New Jersey Health Benefits Plan.

Property and Liability Insurance

A complete schedule of insurance coverage can be found in the statistical section of this Annual Comprehensive Financial Report.

The Charter School is a member of the New Jersey Schools Insurance Group (“NJSIG”). This public entity risk management pool provided workers’ compensation and employer’s liability for its members. A complete schedule of insurance coverage can be found in the Statistical Section of this Annual Comprehensive Financial Report.

The NJSIG is a risk-sharing public entity risk pool that is both an insured and self-administered group of school districts and charter schools established for the purpose of providing low-cost insurance coverage for their members in order to keep local property taxes at a minimum. Each member appoints an official to represent their respective district or charter school for the purpose of creating a governing body from which officers for the NJSIG are elected.

As a member of the NJSIG, the Charter School could be subject to supplemental assessments in the event of deficiencies. If the assets of the NJSIG were to be exhausted, members would become responsible for their respective shares of the NJSIG’s liabilities. The NJSIG can declare and distribute dividends to members upon approval of the State of New Jersey Department of Banking and Insurance. These distributions are divided amongst the members in the same ratio as their individual assessment relates to the total assessment of the membership body.

Selected financial information for NJSIG as of June 30, 2024 was not available as of the date of this report. Selected financial information for NJSIG as of June 30, 2023 is as follows:

Total Assets	\$ 429,049,188
Net Position	\$ 201,308,725
Total Revenue	\$ 160,069,780
Total Expenses	\$ 141,165,428
Change in Net Position	\$ 16,304,414
Net Position Distribution to Participating Members	\$ 2,599,938

Financial statements for the NJSIG are available at the Group’s Executive Director’s Office:

600 Midlantic Drive
Mount Laurel, NJ 08054
Phone: 609-386-6060
Fax: 609-386-8877

PRINCETON CHARTER SCHOOL
NOTES TO THE BASIC FINANCIAL STATEMENTS
FOR THE FISCAL YEAR ENDED JUNE 30, 2024
(Continued)

NOTE 11. RISK MANAGEMENT (Cont'd)

New Jersey Unemployment Compensation Insurance

The Charter School has elected to fund its New Jersey Unemployment Compensation Insurance under the "Benefit Reimbursement Method". Under this plan, the Charter School is required to reimburse the New Jersey Unemployment Trust Fund for benefits paid to its former employees and charged to its account with the State. The Charter School is billed quarterly for amounts due to the State.

A summary of the Charter School and employee contributions, interest, reimbursements to the State for benefits paid and balance of the Charter School's Unemployment Compensation Restricted Fund Balance in the General Fund for the current and previous two years follows:

<u>Fiscal Year</u>	<u>Employer/ Employee Contributions</u>	<u>Amount Reimbursed</u>	<u>Ending Balance</u>
2023-2024	\$ 7,981	\$ 11,476	\$ 30,694
2022-2023	7,417		34,189
2021-2022	7,047	7,500	26,772

NOTE 12. INTERFUND RECEIVABLES AND PAYABLES AND TRANSFERS

The following interfund balances remained on the balance sheet at June 30, 2024.

<u>Fund</u>	<u>Interfund Receivable</u>	<u>Interfund Payable</u>
General Fund	\$ 126,438	\$ 9,575
Special Revenue Fund	9,575	
Capital Projects Fund		91,662
Food Service Program Enterprise Fund		20,554
Student Programs Enterprise Fund		14,222
	<u>\$ 136,013</u>	<u>\$ 136,013</u>

The interfund receivable in the Special Revenue Fund is for grant revenue collected in the General Fund and not turned over by the end of the fiscal year. The interfund payable in the Capital Projects Fund is for cash advanced from the General Fund while awaiting the mortgage loan receivable. The interfund payable in the Student Programs Enterprise Fund and Food Service Enterprise Fund is for cash advanced from the General Fund during the current fiscal year.

PRINCETON CHARTER SCHOOL
NOTES TO THE BASIC FINANCIAL STATEMENTS
FOR THE FISCAL YEAR ENDED JUNE 30, 2024
(Continued)

NOTE 13. POSTEMPLOYMENT BENEFITS OTHER THAN PENSIONS (OPEB)

State Health Benefit Program Fund – Local Education Retired Employees Plan

General Information about the OPEB Plan

Plan Description and Benefits Provided

The Charter School is in a “special funding situation”, as described in GASB Codification Section P50, in that OPEB contributions and expenses are legally required to be made by and are the sole responsibility of the State of New Jersey, not the Charter School.

The State of New Jersey reports a liability as a result of its statutory requirements to pay other post-employment (health) benefits for the State Health Benefit Local Education Retired Employees Plan. The State Health Benefit Local Education Retired Employees Plan is a multiple-employer defined benefit OPEB plan that is administered on a pay-as-you-go basis. Accordingly, no assets are accumulated in a qualifying trust that meets the criteria in paragraph 4 of GASB Statement No. 75, *Accounting and Financial Reporting for the Postemployment Benefits Other than Pensions*. The State Health Benefits Local Education Retired Employees Plan provides medical, prescription drug, and Medicare Part B reimbursement to retirees and their covered dependents of local education employers.

The employer contributions for the participating local education employers are legally required to be funded by the State of New Jersey in accordance with N.J.S.A. 52:14-17.32f. According to N.J.S.A. 52:14-17.32f, the State provides employer-paid coverage to employees who retire from a board of education or county college with 25 years or more of service credit in, or retires on a disability pension from, one or more of the following plans: the Teachers’ Pension and Annuity Fund (TPAF), the Public Employees’ Retirement System (PERS), the Police and Firemen Retirement System (PFRS), or the Alternate Benefit Program (ABP). Pursuant to Chapter 78, P.L. 2011, future retirees eligible for postretirement medical coverage who have less than 20 years of creditable service on June 28, 2011 will be required to pay a percentage of the cost of their health care coverage in retirement provided they retire with 25 years or more of pension service credit. The percentage of the premium for which the retiree will be responsible will be determined based on the retiree’s annual retirement benefit and level of coverage.

The total nonemployer OPEB liability does not include certain other postemployment benefit obligations that are provided by the local education employers. The reporting of these benefits, is the responsibility of the individual education employers.

For additional information about the State Health Benefit Local Education Retired Education Plan, please refer to the Division’s annual financial statements which can be found at www.state.nj.us/treasury/pensions/gasb-notices-opeb.shtml.

PRINCETON CHARTER SCHOOL
NOTES TO THE BASIC FINANCIAL STATEMENTS
FOR THE FISCAL YEAR ENDED JUNE 30, 2024
(Continued)

NOTE 13. POSTEMPLOYMENT BENEFITS OTHER THAN PENSIONS (OPEB) (Cont'd)

State Health Benefit Program Fund – Local Education Retired Employees Plan (Cont'd)

Employees Covered by Benefit Terms

At June 30, 2022, the plan membership consisted of the following:

Retirees, Plan Members or Spouses of Retirees Currently Receiving Benefit Payments	152,383
Active Plan Members	217,212
Total	<u>369,595</u>

Total Nonemployer OPEB Liability

The total nonemployer OPEB liability as of June 30, 2023 was determined by an actuarial valuation as of June 30, 2022, which was rolled forward to June 30, 2023.

Actuarial Assumptions and Other Inputs

The actuarial assumptions vary for each plan member depending on the pension plan the member is enrolled in. This actuarial valuation used the following actuarial assumptions, applied to all periods in the measurement.

	<u>TPAF/ABP</u>	<u>PERS</u>	<u>PFRS</u>
Salary Increases:	2.75 - 4.25%	2.75 - 6.55%	3.25 - 16.25%
	Based on years of service	Based on years of service	Based on years of service

The actuarial assumptions used in the June 30, 2022 valuation were based on the results of the TPAF, PERS and PFRS experience studies prepared for July 1, 2018 – June 30, 2021.

100% of active employees are considered to participate in the Plan upon retirement.

Mortality Rates

Pre-retirement mortality rates were based on the Pub-2010 Healthy “Teachers” (TPAF/ABP), “General” (PERS), and “Safety” (PFRS) classification headcount-weighted mortality table with fully generational mortality improvement projections from the central year using Scale MP-2021. Post-retirement mortality rates were based on the Pub-2010 “General” classification headcount-weighted mortality table with fully generational mortality improvement projections from the central year using Scale MP-2021. Disability mortality was based on the Pub-2010 “General” classification headcount-weighted disabled mortality table with fully generational mortality improvement projections from the central year using Scale MP-2021 for current disabled retirees. Future disabled retirees were based on the Pub-2010 “Safety” (PFRS), “General” (PERS) and “Teachers” (TPAF/ABP) classification headcount-weighted disabled mortality table with fully generational mortality improvement projections from the central year using Scale MP-2021.

PRINCETON CHARTER SCHOOL
NOTES TO THE BASIC FINANCIAL STATEMENTS
FOR THE FISCAL YEAR ENDED JUNE 30, 2024
(Continued)

NOTE 13. POSTEMPLOYMENT BENEFITS OTHER THAN PENSIONS (OPEB) (Cont'd)

State Health Benefit Program Fund – Local Education Retired Employees Plan (Cont'd)

Health Care Trend Assumptions

For pre-Medicare medical benefits, the trend rate is initially 6.50% and decreases to a 4.50% long term trend rate after nine years. For post-65 medical benefits PPO, the trend is increasing to 14.8% in fiscal year 2026 and decreases to 4.50% in fiscal year 2033. For HMO the trend is increasing to 17.4% in fiscal year 2026 and decreases to 4.50% in fiscal year 2033. For prescription drug benefits, the initial trend rate is 9.50% and decreases to a 4.50% long term rate after seven years. For the Medicare Part B reimbursement, the trend rate is 5.00%.

Discount Rate

The discount rate used to measure the total OPEB liability was 3.65%. This represents the municipal bond rate as chosen by the State of New Jersey Division of Pensions and Benefits. The source is the Bond Buyer Go 20-Bond Municipal bond Index, which includes tax-exempt general obligation municipal bonds with an average rating of AA/Aa or higher. As the long-term rate of return is less than the municipal bond rate, it is not considered in the calculation of the discount rate, rather the discount rate is set at the municipal bond rate.

Changes in the State's Total OPEB Liability

	<u>Total OPEB Liability</u>
Balance at June 30, 2022	\$ 5,732,863
Changes for Year:	
Service Cost	441,970
Interest Cost	211,266
Differences Between Expected and Actual Experience	(240,230)
Changes in Assumptions	12,091
Member Contributions	5,414
Gross Benefit Payments	<u>(164,686)</u>
Net Changes	<u>265,825</u>
Balance at June 30, 2023	<u><u>\$ 5,998,688</u></u>

Sensitivity of the Total Nonemployer OPEB Liability Attributable to the Charter School to Changes in the Discount Rate

The following presents the total nonemployer OPEB Liability attributable to the Charter School as of June 30, 2023, calculated using the discount rate as disclosed in this note, as well as what the total nonemployer OPEB liability attributable to the Charter School would be if it were calculated using a discount rate that is 1-percentage-point lower or 1-percentage-point higher than the current rate:

PRINCETON CHARTER SCHOOL
NOTES TO THE BASIC FINANCIAL STATEMENTS
FOR THE FISCAL YEAR ENDED JUNE 30, 2024
(Continued)

NOTE 13. POSTEMPLOYMENT BENEFITS OTHER THAN PENSIONS (OPEB) (Cont'd)

State Health Benefit Program Fund – Local Education Retired Employees Plan (Cont'd)

Sensitivity of the Total Nonemployer OPEB Liability Attributable to the Charter School to Changes in the Healthcare Trend Rate

	June 30, 2023		
	At 1% Decrease (2.65%)	At Discount Rate (3.65%)	At 1% Increase (4.65%)
Total OPEB Liability Attributable to the Charter School	\$ 7,032,432	\$ 5,998,688	\$ 5,168,712

The following presents the total nonemployer OPEB Liability attributable to the Charter School as of June 30, 2023, calculated using the healthcare trend rate as disclosed in this note, as well as what the total nonemployer OPEB liability attributable to the Charter School would be if it were calculated using a healthcare trend rate that is 1-percentage-point lower or 1-percentage-point higher than the current rate:

	June 30, 2023		
	1% Decrease	Healthcare Cost Trend Rate	1% Increase
Total OPEB Liability Attributable to the Charter School	\$ 4,979,836	\$ 5,998,688	\$ 7,331,859

OPEB Expense and Deferred Outflows and Inflows of Resources Related to OPEB

For the fiscal year ended June 30, 2024, the Charter School recognized OPEB expense of \$568,786 as determined by the State of New Jersey Division of Pensions and Benefits. This expense and the related offsetting revenue are for benefits provided by the State through a defined benefit OPEB plan that meets the criteria in GASB Codification Section P50, in which there is a special funding situation.

In accordance with GASB Codification Section P50, as the Charter School's proportionate share of the OPEB liability is \$-0-, there is no recognition of the allocation of the proportionate share of the deferred inflows and outflows of resources.

At June 30, 2023, the State had deferred outflows of resources and deferred inflows of resources related to OPEB associated with the Charter School from the following sources.

PRINCETON CHARTER SCHOOL
NOTES TO THE BASIC FINANCIAL STATEMENTS
FOR THE FISCAL YEAR ENDED JUNE 30, 2024
(Continued)

NOTE 13. POSTEMPLOYMENT BENEFITS OTHER THAN PENSIONS (OPEB) (Cont'd)

State Health Benefit Program Fund – Local Education Retired Employees Plan (Cont'd)

OPEB Expense and Deferred Outflows and Inflows of Resources Related to OPEB (Cont'd)

	Deferral Year	Period in Years	Deferred Outflows of Resources	Deferred Inflows of Resources
Changes in Assumptions	2017	9.54		\$ 216,155
	2018	9.51		223,740
	2019	9.29	\$ 32,916	
	2020	9.24	804,734	
	2021	9.24	4,580	
	2022	9.13		1,215,528
	2023	9.30	10,791	
			<u>853,021</u>	<u>1,655,423</u>
Differences between Expected and Actual Experience	2018	9.51		211,505
	2019	9.29		387,421
	2020	9.24	750,044	
	2021	9.24		880,826
	2022	9.13	125,182	
	2023	9.30		100,243
			<u>875,226</u>	<u>1,579,995</u>
Changes in Proportion	N/A	N/A	<u>1,042,529</u>	<u>106,639</u>
			<u>\$ 2,770,776</u>	<u>\$ 3,342,057</u>

Amounts reported as deferred outflows of resources and deferred inflows of resources excluding changes in proportion related to OPEB will be recognized in OPEB expense as follows:

Fiscal Year Ending June 30,	Total
2024	\$ (299,149)
2025	(299,148)
2026	(260,002)
2027	(153,288)
2028	(31,376)
Thereafter	<u>(464,208)</u>
	<u>\$ (1,507,171)</u>

REQUIRED SUPPLEMENTARY SCHEDULES

PRINCETON CHARTER SCHOOL
REQUIRED SUPPLEMENTARY INFORMATION SCHEDULES
SCHEDULE OF CHARTER SCHOOL'S PROPORTIONATE SHARE OF THE NET PENSION LIABILITY
PUBLIC EMPLOYEES RETIREMENT SYSTEM
LAST TEN FISCAL YEARS

	Fiscal Year Ending June 30,									
	2015	2016	2017	2018	2019	2020	2021	2022	2023	2024
Charter School's Proportion of the Net Pension Liability	0.0029932595%	0.0030915455%	0.0045768408%	0.0041200647%	0.0056978300%	0.0055657137%	0.0038478922%	0.0047301881%	0.0078518025%	0.0093787088%
Charter School's Proportionate Share of the Net Pension Liability	\$ 560,420	\$ 693,990	\$ 1,355,529	\$ 959,085	\$ 1,121,874	\$ 1,002,857	\$ 627,491	\$ 560,362	\$ 1,184,945	\$ 1,358,447
Charter School's Covered Employee Payroll	\$ 207,000	\$ 213,250	\$ 194,994	\$ 345,651	\$ 422,752	\$ 325,110	\$ 321,717	\$ 464,172	\$ 566,230	\$ 799,331
Charter School's Proportionate Share of the Net Pension Liability as a % of its Covered Employee Payroll	270.73%	325.43%	695.16%	277.47%	265.37%	308.47%	195.04%	120.72%	209.27%	169.95%
Plan Fiduciary Net Position as a % of the Total Pension Liability	52.08%	47.93%	40.14%	48.10%	53.60%	56.27%	58.32%	70.33%	62.91%	65.23%

PRINCETON CHARTER SCHOOL
REQUIRED SUPPLEMENTARY INFORMATION SCHEDULES
SCHEDULE OF CHARTER SCHOOL CONTRIBUTIONS
PUBLIC EMPLOYEES RETIREMENT SYSTEM
LAST TEN FISCAL YEARS

	Fiscal Year Ending June 30,									
	2015	2016	2017	2018	2019	2020	2021	2022	2023	2024
Contractually Required Contribution	\$ 24,676	\$ 26,579	\$ 40,660	\$ 39,028	\$ 57,294	\$ 54,591	\$ 42,094	\$ 55,396	\$ 99,015	\$ 125,349
Contributions in relation to the Contractually Required Contribution	(24,676)	(26,579)	(40,660)	(39,028)	(57,294)	(54,591)	(42,094)	(55,396)	(99,015)	(125,349)
Contribution Deficiency/(Excess)	\$ - 0 -	\$ - 0 -	\$ - 0 -	\$ - 0 -	\$ - 0 -	\$ - 0 -	\$ - 0 -	\$ - 0 -	\$ - 0 -	\$ - 0 -
District's Covered Employee Payroll	\$ 213,250	\$ 194,994	\$ 345,651	\$ 422,752	\$ 325,110	\$ 321,717	\$ 464,172	\$ 566,230	\$ 799,331	\$ 1,199,657
Contributions as a percentage of Covered Employee Payroll	11.57%	13.63%	11.76%	9.23%	17.62%	16.97%	9.07%	9.78%	12.39%	10.45%

PRINCETON CHARTER SCHOOL
REQUIRED SUPPLEMENTARY INFORMATION SCHEDULES
SCHEDULE OF STATE'S PROPORTIONATE SHARE OF THE
NET PENSION LIABILITY ASSOCIATED WITH THE CHARTER SCHOOL
TEACHERS' PENSION AND ANNUITY FUND
LAST TEN FISCAL YEARS

	Fiscal Year Ending June 30,										
	2015	2016	2017	2018	2019	2020	2021	2022	2023	2024	
State's proportion of the net pension liability attributable to the Charter School	0.0248024512%	0.0260592790%	0.0246761498%	0.0256731247%	0.0248189179%	0.0241122284%	0.0291613450%	0.0283167206%	0.0283167206%	0.0292646056%	
State's proportionate share of the Net Pension Liability attributable to the Charter School	\$ 13,256,103	\$ 16,470,577	\$ 19,411,831	\$ 17,309,746	\$ 15,789,262	\$ 14,797,902	\$ 19,202,395	\$ 13,613,317	\$ 14,796,494	\$ 14,934,509	
Charter School's Covered Employee Payroll	\$ 2,563,929	\$ 2,474,124	\$ 2,262,360	\$ 2,549,587	\$ 2,988,817	\$ 3,063,391	\$ 3,221,539	\$ 3,294,791	\$ 3,180,034	\$ 3,141,295	
State's proportionate share of the Net Pension Liability attributable to the Charter School as a percentage of its Covered Employee Payroll	517.02%	665.71%	858.03%	678.92%	528.28%	483.06%	596.06%	413.18%	465.29%	475.43%	
Plan Fiduciary Net Position as a percentage of the Total Pension Liability	33.64%	28.71%	22.33%	25.41%	26.49%	26.95%	24.60%	35.52%	32.29%	34.68%	

PRINCETON CHARTER SCHOOL
REQUIRED SUPPLEMENTARY INFORMATION SCHEDULES
SCHEDULE OF STATE CONTRIBUTIONS
TEACHERS' PENSION AND ANNUITY FUND
LATS TEN FISCAL YEARS

	Fiscal Year Ending June 30,									
	2015	2016	2017	2018	2019	2020	2021	2022	2023	2024
Contractually Required Contribution	\$ 713,303	\$ 1,005,677	\$ 1,458,529	\$ 1,199,132	\$ 920,459	\$ 872,820	\$ 1,194,087	\$ 320,327	\$ 398,215	\$ 366,897
Contributions in relation to the Contractually Required Contribution	(364,543)	(432,815)	(530,485)	(365,495)	(474,229)	(639,621)	(823,133)	(1,180,594)	(1,196,355)	(1,170,605)
Contribution Deficiency/(Excess)	\$ 348,760	\$ 572,862	\$ 928,044	\$ 833,637	\$ 446,230	\$ 233,199	\$ 370,954	\$ (860,267)	\$ (798,140)	\$ (803,708)
District's Covered Employee Payroll	\$ 2,262,360	\$ 2,549,591	\$ 2,549,587	\$ 2,988,817	\$ 3,063,391	\$ 3,221,539	\$ 3,294,791	\$ 3,180,034	\$ 3,141,295	\$ 3,105,608
Contributions as a percentage of Covered Employee Payroll	16.11%	16.98%	20.81%	12.23%	15.48%	19.85%	24.98%	37.13%	38.08%	37.69%

PRINCETON CHARTER SCHOOL
SCHEDULE OF CHANGES IN THE STATE'S PROPORTIONATE SHARE OF THE TOTAL OPEB LIABILITY
ASSOCIATED WITH THE CHARTER SCHOOL AND RELATED RATIOS
LAST SEVEN FISCAL YEARS

	Fiscal Year Ending June 30,						
	2017	2018	2019	2020	2021	2022	2023
Change in Total OPEB Liability:							
Service Cost	\$ 359,509	\$ 299,881	\$ 303,843	\$ 375,757	\$ 689,039	\$ 537,270	\$ 441,970
Interest Cost	142,911	167,593	185,935	170,736	169,199	151,927	211,266
Changes of Benefit Terms					(6,942)		
Differences Between Expected & Actual Experience		302,759	(424,367)	1,178,612	(1,747,101)	204,782	(240,230)
Changes in Assumptions	(667,530)	(524,204)	68,072	1,377,438	6,435	(1,537,892)	12,091
Member Contributions	3,787	4,222	4,154	3,979	4,326	4,828	5,414
Gross Benefit Payments	(102,838)	(122,147)	(140,148)	(131,278)	(133,281)	(150,488)	(164,686)
Net Change in Total OPEB Liability	(264,161)	128,104	(2,511)	2,975,244	(1,018,325)	(789,573)	265,825
Total OPEB Liability - Beginning	4,704,085	4,439,924	4,568,028	4,565,517	7,540,761	6,522,436	5,732,863
Total OPEB Liability - Ending	<u>\$ 4,439,924</u>	<u>\$ 4,568,028</u>	<u>\$ 4,565,517</u>	<u>\$ 7,540,761</u>	<u>\$ 6,522,436</u>	<u>\$ 5,732,863</u>	<u>\$ 5,998,688</u>
State's Covered Employee Payroll *	\$ 2,457,354	\$ 2,895,242	\$ 3,388,501	\$ 3,543,256	\$ 3,758,963	\$ 3,746,264	\$ 3,940,626
Total OPEB Liability as a Percentage of Covered Employee Payroll	181%	158%	135%	213%	174%	153%	152%

* - Covered payroll for the fiscal years ending June 30, 2017 through 2023 are based on the payroll on the June 30, 2016 through 2022 census data.

Note: This schedule does not contain ten years of information as GASB No. 75 was implemented during the fiscal year ended June 30, 2018.

PRINCETON CHARTER SCHOOL
NOTES TO REQUIRED SUPPLEMENTARY INFORMATION
FOR THE YEAR ENDED JUNE 30, 2024

A. PUBLIC EMPLOYEES' RETIREMENT SYSTEM

Benefit Changes

There were none.

Changes of Actuarial Assumptions

There were none.

B. TEACHERS' PENSION AND ANNUITY FUND

Benefit Changes

There were none.

Changes of Actuarial Assumptions

In the July 1, 2022 actuarial valuation the salary increases were 2.75 – 4.25% based on years of service while in the July 1, 2021 actuarial valuation the salary increases were 2.75% – 5.65% based on years of service.

C. STATE HEALTH BENEFIT LOCAL EDUCATION RETIRED EMPLOYEES OPEB PLAN

Benefit Changes

There were none.

Changes of Actuarial Assumptions

The discount rate for June 30, 2023 was 3.65%. The discount rate for June 30, 2022 was 3.54%, a change of .11%.

The health care trend rates in the valuation as of June 30, 2023 were based on the following:

For pre-Medicare medical benefits, the trend rate is initially 6.50% and decreases to a 4.50% long term trend rate after nine years. For post-65 medical benefits PPO, the trend is increasing to 14.8% in fiscal year 2026 and decreases to 4.50% in fiscal year 2033. For HMO the trend is increasing to 17.4% in fiscal year 2026 and decreases to 4.50% in fiscal year 2033. For prescription drug benefits, the initial trend rate is 9.50% and decreases to a 4.50% long term rate after seven years. For the Medicare Part B reimbursement, the trend rate is 5.00%.

The health care trend rates in the valuation as of June 30, 2022 were based on the following:

For pre-Medicare medical benefits, the trend rate is initially 6.25% and decreases to a 4.50% long term trend rate after eight years. For post-65 medical benefits PPO, the trend is initially -1.99% in fiscal year 2023, increasing to 13.44% in fiscal year 2026 and decreases to 4.5% in fiscal year 2033. For HMO the trend is initially -3.54% in fiscal year 2023, increasing to 15.19% in fiscal year 2026 and decreases to 4.50% in fiscal year 2033. For prescription drug benefits, the initial trend rate is 8.00% and decreases to a 4.50% long term rate after eight years.

BUDGETARY COMPARISON SCHEDULES

PRINCETON CHARTER SCHOOL
BUDGETARY COMPARISON SCHEDULE - BUDGETARY BASIS
GENERAL FUND
FOR THE FISCAL YEAR ENDED JUNE 30, 2024

	Original Budget	Budget Transfers	Final Budget	Actual	Variance Final to Actual
Revenues:					
Local Sources:					
Local Levy - Charter School Aid - Local Share	\$ 7,076,313	\$ 47,276	\$ 7,123,589	\$ 7,123,589	
Rents and Royalties	95,000	(95,000)		41,077	\$ 41,077
Private Contributions				169,551	169,551
Miscellaneous Revenue				20,816	20,816
Total - Local Sources	<u>7,171,313</u>	<u>(47,724)</u>	<u>7,123,589</u>	<u>7,355,033</u>	<u>231,444</u>
State Sources:					
Equalization Aid	353,133	21,793	374,926	374,926	
Special Education Aid - Charter School Aid	166,991	(8,319)	158,672	158,672	
Security Aid	40,376	1,101	41,477	41,477	
On-Behalf TPAF Pension Contributions (Non-Budgeted)				1,170,605	1,170,605
On-Behalf TPAF Post Retirement Medical Benefits (Non-Budgeted)				322,229	322,229
On-Behalf TPAF Long-Term Disability Insurance (Non-Budgeted)				601	601
On-Behalf TPAF Non-Contributory Insurance (Non-Budgeted)				13,350	13,350
Reimbursed TPAF Social Security Contributions (Non-Budgeted)				228,813	228,813
Total State Sources	<u>560,500</u>	<u>14,575</u>	<u>575,075</u>	<u>2,310,673</u>	<u>1,735,598</u>
Total Revenues	<u>7,731,813</u>	<u>(33,149)</u>	<u>7,698,664</u>	<u>9,665,706</u>	<u>1,967,042</u>

PRINCETON CHARTER SCHOOL
BUDGETARY COMPARISON SCHEDULE - BUDGETARY BASIS
GENERAL FUND
FOR THE FISCAL YEAR ENDED JUNE 30, 2024

	Original Budget	Budget Transfers	Final Budget	Actual	Variance Final to Actual
Expenditures:					
Regular Programs - Instruction:					
Grades 1-5 - Salaries of Teachers	\$ 3,359,281	\$ 225,054	\$ 3,584,335	\$ 3,584,335	
Regular Programs - Undistributed Instruction:					
Other Salaries for Instruction	173,459	25,973	199,432	199,432	
Purchased Professional/Technical Services	84,333	(83,115)	1,218	1,218	
Other Purchased Services	21,147	(1,812)	19,335	19,335	
General Supplies	122,000	(29,682)	92,318	92,318	
Textbooks	20,000	8,943	28,943	28,943	
Other Objects	10,750	8,977	19,727	19,727	
Total Regular Programs - Instruction	3,790,970	154,338	3,945,308	3,945,308	
School-Sponsored Athletics - Instruction:					
Other Purchased Services	5,000	12,305	17,305	17,305	
Total School-Sponsored Athletics - Instruction	5,000	12,305	17,305	17,305	
Total Instruction	3,795,970	166,643	3,962,613	3,962,613	
Undistributed Expenditures:					
Attendance and Social Work:					
Other Purchased Services	2,500	129,832	132,332	132,332	
Total Attendance and Social Work	2,500	129,832	132,332	132,332	

PRINCETON CHARTER SCHOOL
BUDGETARY COMPARISON SCHEDULE - BUDGETARY BASIS
GENERAL FUND
FOR THE FISCAL YEAR ENDED JUNE 30, 2024

	Original Budget	Budget Transfers	Final Budget	Actual	Variance Final to Actual
Undistributed Expenditures:					
Health Services:					
Salaries	\$ 131,423	\$ (31,103)	\$ 100,320	\$ 100,320	
Purchased Professional/Technical Services	10,000	(1,391)	8,609	8,609	
Supplies and Materials	4,250	(868)	3,382	3,382	
Total Health Services	145,673	(33,362)	112,311	112,311	
Speech, OT, PT, and Related Services:					
Purchased Professional Educational Services	7,000	9,462	16,462	16,462	
Total Speech, OT, PT, and Related Services	7,000	9,462	16,462	16,462	
Child Study Team					
Other Purchased Services	30,000	169,380	199,380	199,380	
Total Child Study Team	30,000	169,380	199,380	199,380	
General Administration:					
Salaries	786,055	1,951	788,006	788,006	
Legal Services	15,000	(9,930)	5,070	5,070	
Audit Fees	31,500	14,250	45,750	45,750	
Communications/Telephone	19,350	(1,325)	18,025	18,025	
Other Purchased Services	26,500	(15,865)	10,635	10,635	
Supplies and Materials	5,000	6,968	11,968	11,968	
Miscellaneous Expenditures	41,149	67,411	108,560	108,560	
Total General Administration	924,554	63,460	988,014	988,014	

PRINCETON CHARTER SCHOOL
BUDGETARY COMPARISON SCHEDULE - BUDGETARY BASIS
GENERAL FUND
FOR THE FISCAL YEAR ENDED JUNE 30, 2024

	Original Budget	Budget Transfers	Final Budget	Actual	Variance Final to Actual
Undistributed Expenditures:					
School Administration:					
Other Purchased Services	\$ 3,000	\$ (2,749)	\$ 251	\$ 251	
Total School Administration	3,000	(2,749)	251	251	
Central Services:					
Purchased Professional Services	173,296	12,308	185,604	185,604	
Total Central Services	173,296	12,308	185,604	185,604	
Administrative Information Technology:					
Purchased Professional and Technical Services	98,555	39,541	138,096	138,096	
Supplies and Materials	7,050	18,122	25,172	25,172	
Total Administrative Information Technology	105,605	57,663	163,268	163,268	
Custodial Services:					
Salaries	151,079	(75,579)	75,500	75,500	
Purchased Professional and Technical Services	160,140	(18,935)	141,205	141,205	
Other Purchased Property Services	82,215	(43,791)	38,424	38,424	
Supplies and Materials	2,000		3,713	3,713	
Rental of Land & Bldg. Other than Lease Purchase	2,000	(1,233)	767	767	
Insurance	79,615	1,566	81,181	81,181	
General Supplies	57,550	49,887	107,437	107,437	
Energy (Electric)	130,000	(8,291)	121,709	121,709	
Energy (Oil)	4,000	950	4,950	4,950	
Energy (Water)	9,000	11,284	20,284	20,284	
Total Custodial Services	677,599	(84,142)	595,170	595,170	

PRINCETON CHARTER SCHOOL
BUDGETARY COMPARISON SCHEDULE - BUDGETARY BASIS
GENERAL FUND
FOR THE FISCAL YEAR ENDED JUNE 30, 2024

	Original Budget	Budget Transfers	Final Budget	Actual	Variance Final to Actual
Undistributed Expenditures:					
Care and Upkeep of Grounds:					
Purchased Professional and Technical Services	\$ 15,000	\$ (15,000)			
Total Care and Upkeep of Grounds	15,000	(15,000)			
Student Transportation Services:					
Contracted Services:					
Other than Between Home and School - Vendors	13,500	21,011	\$ 34,511	\$ 34,511	
Total Student Transportation Services	13,500	21,011	34,511	34,511	
Unallocated Employee Benefits:					
Social Security Contributions	104,638	34,042	138,680	138,680	
Other Retirement Contributions - PERS	108,917	16,432	125,349	125,349	
Other Retirement Contributions - Regular	5,046	(1,668)	3,378	3,378	
Unemployment Compensation	10,000	(3,642)	6,358	6,358	
Workmen's Compensation	62,392	(31,658)	30,734	30,734	
Health Benefits	601,343	(57,434)	543,909	543,909	
Total Unallocated Benefits	892,336	(43,928)	848,408	848,408	
On-Behalf Contributions: (Non-Budgeted)					
On-Behalf TPAF Pension Contributions			1,170,605	1,170,605	\$ (1,170,605)
On-Behalf TPAF Post Retirement Medical Benefits			322,229	322,229	(322,229)
On-Behalf TPAF Long-Term Disability Insurance			601	601	(601)
On-Behalf TPAF Non-Contributory Insurance			13,350	13,350	(13,350)
Reimbursed TPAF Social Security Contributions			228,813	228,813	(228,813)
Total On-Behalf Contributions			1,735,598	1,735,598	(1,735,598)

PRINCETON CHARTER SCHOOL
BUDGETARY COMPARISON SCHEDULE - BUDGETARY BASIS
GENERAL FUND
FOR THE FISCAL YEAR ENDED JUNE 30, 2024

	Original Budget	Budget Transfers	Final Budget	Actual	Variance Final to Actual
TOTAL GENERAL CURRENT EXPENSE	\$ 6,786,033	\$ 450,578	\$ 7,238,324	\$ 8,973,922	\$ (1,735,598)
Capital Outlay:					
Equipment:					
Non Instructional Equipment	5,000	(5,000)			
Total Equipment	5,000	(5,000)			
Facilities Acquisition and Construction Services:					
Architectural/Engineering Services		534	534	534	
Construction Services	25,000	(25,000)			
Interest on Mortgage	346,613	(18,617)	327,996	327,996	
Principal on Mortgage	389,168	(37,013)	352,155	352,155	
Total Facilities Acquisition and Construction Services	760,781	(80,096)	680,685	680,685	
Total Capital Outlay	765,781	(85,096)	680,685	680,685	
Total Expenditures	7,551,814	365,482	7,919,009	9,654,607	(1,735,598)
Other Financing Sources/(Uses):					
Transfers:					
Capital Projects Fund - Unexpended Balances				10,865	10,865
Total Other Financing/(Uses):				10,865	10,865

PRINCETON CHARTER SCHOOL
BUDGETARY COMPARISON SCHEDULE - BUDGETARY BASIS
GENERAL FUND
FOR THE FISCAL YEAR ENDED JUNE 30, 2024

	Original Budget	Budget Transfers	Final Budget	Actual	Variance Final to Actual
Excess/(Deficit) of Revenues Over/(Under) Expenditures and Other Financing Uses	\$ 179,999	\$ (398,631)	\$ (218,632)	\$ 21,964	\$ 240,596
Fund Balance, July 1	239,974		239,974	239,974	
Fund Balance, June 30	<u>\$ 419,973</u>	<u>\$ (398,631)</u>	<u>\$ 21,342</u>	<u>\$ 261,938</u>	<u>\$ 240,596</u>
Restricted:					
Charter School Escrow				\$ 75,000	
Unemployment Compensation				30,694	
Unassigned				156,244	
Fund Balance per Governmental Funds GAAP/Budgetary Basis				<u>\$ 261,938</u>	

PRINCETON CHARTER SCHOOL
BUDGETARY COMPARISON SCHEDULE - BUDGETARY BASIS
SPECIAL REVENUE FUND
FOR THE FISCAL YEAR ENDED JUNE 30, 2024

	Original Budget	Budget Transfers	Final Budget	Actual	Variance Final to Actual
Revenue:					
Local Sources	\$ 24,743	\$ 10,000	\$ 34,743	\$ 25,878	\$ (8,865)
State Sources	127,288		127,288	117,713	9,575
Federal Sources	106,346		106,346	106,346	
Total Revenue	258,377	10,000	268,377	249,937	710
Expenditures:					
Instruction:					
Salaries of Teachers	30,475		30,475	30,475	
General Supplies	23,084		23,084	23,084	
Total Instruction	53,559		53,559	53,559	
Support Services:					
Employee Benefits	2,331		2,331	2,331	
Purchased Professional/Technical Services	73,540		73,540	73,540	
Other Purchased Services	1,659		1,659	1,659	
Student Activities		10,000	10,000	10,000	
Total Support Services	77,530	10,000	87,530	87,530	
Facilities Acquisition and Construction Services:					
Construction Services	127,288		127,288	117,713	9,575
Total Facilities Acquisition and Construction Services	127,288		127,288	117,713	9,575
Total Expenditures	258,377	10,000	268,377	258,802	9,575
Excess/(Deficiency) of Revenue Over/ (Under) Expenditures	\$ - 0 -	\$ - 0 -	\$ - 0 -	\$ (8,865)	\$ (8,865)

PRINCETON CHARTER SCHOOL
REQUIRED SUPPLEMENTARY INFORMATION
BUDGETARY COMPARISON SCHEDULE
NOTE TO RSI
FOR THE FISCAL YEAR ENDED JUNE 30, 2024

Note A - Explanation of Differences between Budgetary Inflows and Outflows and GAAP Revenues and Expenditures:	General Fund	Special Revenue Fund
Sources/Inflows of Resources:		
Actual Amounts (Budgetary Basis) "Revenue" from the Budgetary Comparison Schedule	\$ 9,665,706	\$ 249,937
Total Revenues as Reported on the Statement of Revenues, Expenditures and Changes in Fund Balances - Governmental Funds	<u>\$ 9,665,706</u>	<u>\$ 249,937</u>
Uses/Outflows of Resources:		
Actual Amounts (Budgetary Basis) "Total Outflows" from the Budgetary Comparison Schedule	\$ 9,654,607	\$ 258,802
Total Expenditures as Reported on the Statement of Revenue, Expenditures, and Changes in Fund Balances - Governmental Funds	<u>\$ 9,654,607</u>	<u>\$ 258,802</u>

Annual appropriated budgets are prepared in the spring of each year for the General and Special Revenue Funds. The budget for the fiscal year ended June 30, 2024 was submitted to the County office and was approved by a vote of the Board of Trustees. Budgets are prepared using the modified accrual basis of accounting. The legal level budgetary control is established at line item accounts within each fund. Line item accounts are defined as the lowest of (most specific) level of detail as established pursuant to the minimum chart of accounts referenced in N.J.A.C. 6:20-2A.2(m)1. Transfers of appropriations may be made by School Board resolution at any time during the fiscal year. All budgetary amounts presented in the accompanying supplementary information reflect the original budget and the amended budget (which have been adjusted for legally authorized revisions of the annual budgets during the year).

Formal budgetary integration into the accounting system is employed as a management control device during the year. For governmental funds, there are no substantial differences between the budgetary basis of accounting and generally accepted accounting principles, with the exception of the special revenue fund as noted below. Encumbrance accounting is also employed as an extension of formal budgetary integration in the governmental fund types. Unencumbered appropriations lapse at fiscal year end.

The accounting records of the Special Revenue Fund are maintained on the grant accounting budgetary basis, except for student activities. The grant accounting budgetary basis differs from GAAP in that the grant accounting budgetary basis recognizes encumbrances as expenditures and also recognizes the related revenue, whereas the GAAP basis does not. Sufficient supplemental records are maintained to allow for the presentation of GAAP basis financial reports.

SCHOOL LEVEL SCHEDULES
(NOT APPLICABLE)

SPECIAL REVENUE FUND

PRINCETON CHARTER SCHOOL
SPECIAL REVENUE FUND
 COMBINING SCHEDULE OF REVENUE AND EXPENDITURES - BUDGETARY BASIS
 FOR THE FISCAL YEAR ENDED JUNE 30, 2024

	I.D.E.A.		Elementary and Secondary Education Act Title I	SDA Emergent and Capital Maintenance Needs	Local Grants	Student Activities	Total
	Part B, Basic	Part B, Preschool					
REVENUE:							
Local Sources					\$ 24,743	\$ 1,135	\$ 25,878
State Sources	\$ 71,827	\$ 1,713	\$ 32,806	\$ 117,713			117,713
Federal Sources							106,346
Total Revenue	71,827	1,713	32,806	117,713	24,743	1,135	249,937
EXPENDITURES:							
Instruction:							
Salaries of Teachers			30,475		23,084		30,475
General Supplies							23,084
Total Instruction			30,475		23,084		53,559
Support Services:							
Employee Benefits			2,331				2,331
Purchased Professional/Technical Services	71,827	1,713					73,540
Other Purchased Services (400-500 Series)					1,659	10,000	1,659
Student Activities							10,000
Total Support Services	71,827	1,713	2,331		1,659	10,000	87,530
Facilities Acquisition & Construction Services:							
Building Improvements				117,713			117,713
Total Facilities Acquisition & Construction Services				117,713			117,713
Total Expenditures	\$ 71,827	\$ 1,713	\$ 32,806	\$ 117,713	\$ 24,743	\$ 10,000	\$ 258,802

CAPITAL PROJECTS FUND

PRINCETON CHARTER SCHOOL
CAPITAL PROJECTS FUND
SUMMARY SCHEDULE OF REVENUES, EXPENDITURES AND CHANGES IN
FUND BALANCE - BUDGETARY BASIS
FOR THE FISCAL YEAR ENDED JUNE 30, 2024

Other Financing Uses:	
Transfer to General Fund - Capital Outlay	<u>\$ (10,865)</u>
Total Other Financing Uses	<u>(10,865)</u>
Deficiency of Revenues and Other Financing Sources	
Under Expenditures and Other Financing Uses	(10,865)
Fund Balance - Beginning Balance	<u>\$ 10,865</u>
Fund Balance - Ending Balance	<u><u>\$ - 0 -</u></u>

PRINCETON CHARTER SCHOOL
CAPITAL PROJECTS FUND
SCHEDULE OF PROJECT REVENUES, EXPENDITURES,
PROJECT BALANCES AND PROJECT STATUS
BUDGETARY BASIS
EXPANSION AND RENOVATION OF THE PRINCETON CHARTER SCHOOL
FROM INCEPTION AND FOR THE FISCAL YEAR ENDED JUNE 30, 2024

	Prior Periods	Current Year	Total	Revised Authorized Cost
Revenue and Other Financing Sources:				
Charter School Endowment Fund	\$ 500,000		\$ 500,000	\$ 500,000
Transfer from Capital Outlay	1,200,000	\$ (10,865)	1,189,135	1,189,135
Mortgage Loan	4,500,000		4,500,000	4,500,000
Total Revenue and Other Financing Sources	6,200,000	(10,865)	6,189,135	6,189,135
Expenditures:				
Construction Services	5,584,596		5,584,596	5,584,596
Legal Services	53,093		53,093	53,093
Other Purchased Professional Technical Services	551,446		551,446	551,446
Total Expenditures	6,189,135		6,189,135	6,189,135
Excess (Deficit) of Revenue and Other Financing Sources Over (Under) Expenditures	\$ 10,865	\$ (10,865)	\$ - 0 -	\$ - 0 -
Additional Project Information:				
Project Number	N/A			
Grant Date	N/A			
Original Authorized Cost	\$ 4,500,000			
Local Funds	\$ 1,689,135			
Revised Authorized Cost	\$ 6,189,135			
Percentage Increase over Original Authorized Cost	37.54%			
Percentage Completion	100.00%			
Original Target Completion Date	12/31/2020			
Revised Target Completion Date	6/30/2024			

PROPRIETARY FUNDS

PRINCETON CHARTER SCHOOL
ENTERPRISE FUNDS
COMBINING STATEMENT OF NET POSITION
JUNE 30, 2024

	<u>Major Fund</u> <u>Food Service</u> <u>Program</u>	<u>Non-Major Fund</u> <u>Student</u> <u>Programs</u>	<u>Total</u>
<u>ASSETS:</u>			
Current Assets:			
Accounts Receivable:			
State	\$ 63		\$ 63
Federal	729		729
Other	25,287	\$ 14,222	39,509
	<u>26,079</u>	<u>14,222</u>	<u>40,301</u>
Total Current Assets			
	<u>26,079</u>	<u>14,222</u>	<u>40,301</u>
Non-Current Assets:			
Capital Assets	18,820		18,820
Less: Accumulated Depreciation	(14,837)		(14,837)
	<u>3,983</u>		<u>3,983</u>
Total Non-Current Assets			
	<u>3,983</u>		<u>3,983</u>
Total Assets	<u>30,062</u>	<u>14,222</u>	<u>44,284</u>
<u>LIABILITIES:</u>			
Current Liabilities:			
Interfund Payable	20,554	14,222	34,776
Unearned Revenue - Prepaid Sales	5,525		5,525
	<u>26,079</u>	<u>14,222</u>	<u>40,301</u>
Total Current Liabilities			
	<u>26,079</u>	<u>14,222</u>	<u>40,301</u>
<u>NET POSITION:</u>			
Investment in Capital Assets	<u>3,983</u>		<u>3,983</u>
Total Net Position	<u>\$ 3,983</u>	<u>\$ - 0 -</u>	<u>\$ 3,983</u>

PRINCETON CHARTER SCHOOL
ENTERPRISE FUNDS
COMBINING STATEMENT OF REVENUE, EXPENSES AND CHANGES IN NET POSITION
FOR THE FISCAL YEAR ENDED JUNE 30, 2024

	<u>Major Fund</u> <u>Food Service</u> <u>Program</u>	<u>Non-Major Fund</u> <u>Student</u> <u>Programs</u>	<u>Total</u>
Operating Revenue			
Local Sources:			
Daily Sales:			
Reimbursable Programs	\$ 185,354		\$ 185,354
Program Fees		\$ 72,454	72,454
Total Operating Revenue	185,354	72,454	257,808
Operating Expenses:			
Cost of Sales - Reimbursable Programs	71,253		71,253
Salaries, Benefits & Payroll Taxes		55,716	55,716
Supplies and Materials	91,529		91,529
Rent	39,365		39,365
Purchased Professional Services	18,975	17,011	35,986
Depreciation	1,258		1,258
Miscellaneous	178		178
Total Operating Expenses	222,558	72,727	295,285
Operating Income/(Loss)	(37,204)	(273)	(37,477)
Non-Operating Revenue:			
State Sources:			
State School Lunch Program	1,311		1,311
New Jersey Expanded Income Eligibility - Lunch	304		304
Federal Sources:			
National Lunch Program	13,396		13,396
Healthy Hunger Free Kids Act	1,515		1,515
COVID-19 Pandemic Electronic Benefit Transfer	653		653
Total Non-Operating Revenue	17,179		17,179
Change in Net Position	(20,025)	(273)	(20,298)
Net Position - Beginning of Year	24,008	273	24,281
Net Position - End of Year	\$ 3,983	\$ - 0 -	\$ 3,983

PRINCETON CHARTER SCHOOL
ENTERPRISE FUNDS
COMBINING STATEMENT OF NET POSITION
FOR THE FISCAL YEAR ENDED JUNE 30, 2024

	<u>Major Fund</u>	<u>Non-Major Fund</u>	
	<u>Food Service</u>	<u>Student</u>	
	<u>Program</u>	<u>Programs</u>	<u>Total</u>
Cash Flows from Operating Activities:			
Receipts from Customers	\$ 160,764		\$ 160,764
Receipts from Program Revenues		\$ 62,635	62,635
Payments to Food Service Vendor	(71,253)		(71,253)
Payments to Suppliers	(91,529)		(91,529)
Payments of Salaries, Benefits & Payroll Taxes		(55,716)	(55,716)
Payments for Rent	(39,365)		(39,365)
Payments for Miscellaneous Expenses	(178)		(178)
Payments for Purchased Professional Services	(18,975)	(17,010)	(35,985)
Net Cash Provided By/(Used for) Operating Activities	(60,536)	(10,091)	(70,627)
Cash Flows from Noncapital Financing Activities:			
Cash Received from State and Federal Reimbursements	17,035		17,035
Interfund Advanced/(Returned)	20,554	10,091	30,645
Net Cash Provided by Noncapital Financing Activities	37,589	10,091	47,680
Net Increase/(Decrease) in Cash and Cash Equivalents	(22,947)	- 0 -	(22,947)
Cash and Cash Equivalents, July 1	22,947	- 0 -	22,947
Cash and Cash Equivalents, June 30	<u>\$ - 0 -</u>	<u>\$ - 0 -</u>	<u>\$ - 0 -</u>
Reconciliation of Operating Income/(Loss) to			
Net Cash Provided By/(Used for) Operating Activities:			
Operating Income/(Loss)	\$ (37,204)	\$ (273)	\$ (37,477)
Adjustment to Reconcile Operating Income/(Loss)			
to Cash Provided By/(Used for) Operating Activities:			
Depreciation	1,258		1,258
Changes in Assets and Liabilities:			
(Increase)/Decrease in Other Accounts Receivable	(20,427)	(9,818)	(30,245)
(Increase)/Decrease in Prepaid Sales	(4,163)		(4,163)
Net Cash Provided By/(Used for) Operating Activities	<u>\$ (60,536)</u>	<u>\$ (10,091)</u>	<u>\$ (70,627)</u>

FIDUCIARY ACTIVITIES
(NOT APPLICABLE)

LONG-TERM LIABILITIES

Page 100

PRINCETON CHARTER SCHOOL
LONG-TERM LIABILITIES
SCHEDULE OF MORTGAGE LOANS PAYABLE

Purpose	Date of Issue	Original Issue	Maturities of Bonds					
			Outstanding			Interest Rate	Balance	
			Year	June 30, 2024			June 30, 2023	Matured
				Amount				
Expansion and Renovation Mortgage	6/1/2021	\$ 4,500,000	2024/25	\$ 132,341	3.50%	\$ 4,316,448	\$ 127,334	\$ 4,189,114
			2025/26	137,115	3.50%			
			2026/27	142,060	3.50%			
			2027/28	3,777,598	3.50%			
						\$ 10,276,831	\$ 389,168	\$ 9,887,663

STATISTICAL SECTION
(UNAUDITED)

This part of the Charter School's Annual Comprehensive Financial Report presents detailed information as a context for understanding what the information in the financial statements, note disclosures and required supplementary information says about the Charter School's overall financial health.

Financial Trends

These schedules contain trend information to help the reader understand how the Charter School's financial performance and well-being have changed over time. J-1 thru J-5

Revenue Capacity

These schedules contain information to help the reader assess the factors affecting the Charter School's ability to generate its property taxes. J-6 thru J-9

Debt Capacity

These schedules present information to help the reader assess the affordability of the Charter School's current levels of outstanding debt and the School's ability to issue additional debt in the future. J-10 thru J-13

Demographic and Economic Information

These schedules offer demographic and economic indicators to help the reader understand the environment within which the Charter School's financial activities take place and to help make comparisons over time and with other governments. J-14 thru J-15

Operating Information

These schedules contain information about the Charter School's operations and resources to help the reader understand how the Charter School's financial information relates to the services the Charter School provides and the activities it performs. J-16 thru J-21

Sources: Unless otherwise noted, the information in these schedules is derived from the Annual Comprehensive Financial Report for the relevant year.

PRINCETON CHARTER SCHOOL
NET POSITION BY COMPONENT
LAST TEN FISCAL YEARS
 (UNAUDITED)
(Accrual Basis of Accounting)

	June 30,									
	2015	2016	2017	2018	2019	2020	2021	2022	2023	2024
Governmental Activities:										
Net Investment in Capital Assets	\$ 3,925,810	\$ 3,582,973	\$ 3,269,440	\$ 3,008,598	\$ 3,327,729	\$ 3,064,242	\$ 453,696	\$ 3,596,197	\$ 3,729,063	\$ 3,510,948
Restricted	75,000	75,000	75,000	75,000	75,000	108,213	108,841	118,250	127,510	115,150
Unrestricted/(Deficit)	267,234	375,774	230,046	265,056	(385,232)	(380,518)	2,573,947	(151,746)	(406,233)	(457,105)
Total Governmental Activities Net Position	\$ 4,268,044	\$ 4,033,747	\$ 3,574,486	\$ 3,348,654	\$ 3,017,497	\$ 2,791,937	\$ 3,136,484	\$ 3,562,701	\$ 3,450,340	\$ 3,168,993
Business-Type Activities:										
Investment in Capital Assets	\$ 15,285	\$ 14,027	\$ 12,772	\$ 11,547	\$ 10,322	\$ 9,005	\$ 7,750	\$ 6,496	\$ 5,241	\$ 3,983
Unrestricted/(Deficit)	1,761	5,507	9,432	9,326	3,796	(9,005)	(7,750)	25,941	19,040	
Total Business-Type Activities Net Position	\$ 17,046	\$ 19,534	\$ 22,204	\$ 20,873	\$ 14,118	\$ - 0 -	\$ - 0 -	\$ 32,437	\$ 24,281	\$ 3,983
Charter School-Wide										
Net Investment in Capital Assets	\$ 3,941,095	\$ 3,597,000	\$ 3,282,212	\$ 3,020,145	\$ 3,338,051	\$ 3,073,247	\$ 461,446	\$ 3,602,693	\$ 3,734,304	\$ 3,514,931
Restricted	75,000	75,000	75,000	75,000	75,000	108,213	108,841	118,250	127,510	115,150
Unrestricted/(Deficit)	268,995	381,281	239,478	274,382	(381,436)	(389,523)	2,566,197	(125,805)	(387,193)	(457,105)
Total Charter School-Wide Net Position	\$ 4,285,090	\$ 4,053,281	\$ 3,596,690	\$ 3,369,527	\$ 3,031,617	\$ 2,791,937	\$ 3,136,484	\$ 3,595,138	\$ 3,474,621	\$ 3,172,976

Source: Princeton Charter School Financial Reports.

PRINCETON CHARTER SCHOOL
REVENUES, EXPENSES AND CHANGES IN NET POSITION
LAST TEN FISCAL YEARS
(UNAUDITED)
(Accrual Basis of Accounting)

	For Fiscal Year Ending June 30,									
	2015	2016	2017	2018	2019	2020	2021	2022	2023	2024
Expenses:										
Governmental Activities:										
Instruction:										
Regular	\$ 3,618,617	\$ 3,953,523	\$ 4,445,743	\$ 5,573,943	\$ 5,927,146	\$ 6,020,368	\$ 6,770,450	\$ 6,108,099	\$ 6,438,932	\$ 6,441,445
Special Education				51,007	55,875	60,872	65,776	85,645	68,189	87,530
Other Instruction				4,234	5,320	3,286	231	2,707	4,332	18,951
Other Special Instruction				163,637	173,026	128,582				
Support Services:										
Student & Instruction Related Services	560,201	329,174	466,995	163,637	239,342	142,047	156,839	259,948	219,494	532,725
General Administration Services	1,228,372	1,306,584	1,353,676	833,825	1,177,129	1,133,815	1,057,089	1,121,324	1,105,468	1,227,063
School Administration Services				255,204	7,696	667	545	966	2,267	275
Central Services				219,939	91,276	118,257	152,593	168,703	190,158	203,259
Administrative Information Technology				115,740	94,741	106,309	123,897	209,117	132,919	178,798
Plant Operations And Maintenance	695,803	674,854	680,032	582,444	733,152	683,751	553,262	743,148	663,535	665,767
Pupil Transportation	12,446	11,958	13,171	8,615	14,870	12,750		19,860	32,855	37,794
Interest on Long-Term Debt	313,193	260,692	274,907	270,880	263,320	268,991	277,361	361,352	397,900	392,125
Unallocated Depreciation	496,953	497,495	480,057	476,784		99,193	181,650	103,531	89,375	56,541
Total Governmental Activities Expenses	6,925,585	7,034,280	7,714,581	8,719,889	8,782,893	8,778,888	9,339,693	9,184,400	9,345,424	9,842,273
Business-Type Activities:										
Food Service Program	94,412	93,933	107,960	127,568	138,208	104,411	14,906	177,719	136,604	222,558
Chess Program	13,686	15,900	16,276							
Student Programs	71,386	73,278	124,226	183,221	179,998	75,854		31,294	96,386	72,727
Total Business-Type Activities Expenses	179,484	183,111	248,462	310,789	318,206	180,265	14,906	209,013	232,990	295,285
Total Charter School-Wide Expenses	7,105,069	7,217,391	7,963,043	9,030,678	9,101,099	8,959,153	9,354,599	9,393,413	9,578,414	10,137,558
Program Revenues:										
Governmental Activities:										
Charges for Services										1,135
Operating Grants and Contributions	1,132,893	1,359,703	1,777,953	2,146,694	1,862,028	1,852,505	2,232,417	2,037,828	1,990,933	1,712,119
Capital Grants and Contributions							1,003	63,583	68,342	117,713
Total Governmental Activities Program Revenues	1,132,893	1,359,703	1,777,953	2,146,694	1,862,028	1,852,505	2,233,420	2,101,411	2,059,275	1,830,967
Business-Type Activities:										
Charges for Services	154,092	178,241	212,245	261,416	244,326	135,875	2,794	77,908	183,199	257,808
Operating Grants and Contributions	8,375	7,358	28,887	38,886	38,078	18,686	6,596	163,542	41,635	17,179
Total Business-Type Activities Program Revenues	162,467	185,599	241,132	300,302	282,404	154,561	9,390	241,450	224,834	274,987
Total Charter School-Wide Program Revenues	1,295,360	1,545,302	2,019,085	2,446,996	2,144,432	2,007,066	2,242,810	2,342,861	2,284,109	2,105,954

PRINCETON CHARTER SCHOOL
REVENUES, EXPENSES AND CHANGES IN NET POSITION

LAST TEN FISCAL YEARS

(UNAUDITED)

(Accrual Basis of Accounting)

	For Fiscal Year Ending June 30,									
	2015	2016	2017	2018	2019	2019	2021	2022	2023	2024
Net (Expenses)/Revenue										
Governmental Activities										
Business-Type Activities	\$ (5,792,692)	\$ (5,674,577)	\$ (5,936,628)	\$ (6,573,195)	\$ (6,920,865)	\$ (6,926,383)	\$ (7,106,273)	\$ (7,082,989)	\$ (7,286,149)	\$ (8,011,306)
Total Charter School-Wide Net (Expenses)/Revenue	(17,017)	2,488	(7,330)	(10,487)	(35,802)	(25,704)	(5,516)	32,437	(8,156)	(20,298)
	(5,809,709)	(5,672,089)	(5,943,958)	(6,583,682)	(6,956,667)	(6,952,087)	(7,111,789)	(7,050,552)	(7,294,305)	(8,031,604)
General Revenues and Other Changes in Net Position:										
Governmental Activities:										
Local Property Taxes - Charter School Aid	4,819,869	4,792,581	4,693,659	5,245,919	6,060,133	6,464,767	6,433,698	6,638,973	6,538,180	7,123,589
Unrestricted Federal and State Aid	457,516	499,827	599,918	776,291	261,638			292,246	369,563	374,926
Grants and contributions not restricted to										
Specific Programs	50,000	50,000	152,000					577,987	266,045	231,444
Miscellaneous Income	48,977	97,872	41,790	170,672	126,343	89,975	94,638			
Payroll Protection Loan Forgiveness							928,000			
Transfers			(10,000)	(9,156)	(31,430)	(11,586)	(5,516)			
Total Governmental Activities General Revenues and Other Changes	5,376,362	5,440,280	5,477,367	6,183,726	6,416,684	6,543,156	7,450,820	7,509,206	7,173,788	7,729,959
Business-Type Activities:										
Other Items										
Transfers			10,000	9,156	31,430	11,586	5,516			
Total Business-Type Activities General Revenues and Other Changes			10,000	9,156	29,047	11,586	5,516			
Total Charter School-Wide General Revenues & Other Changes in Net Position	5,376,362	5,440,280	5,487,367	6,192,882	6,445,731	6,554,742	7,456,336	7,509,206	7,173,788	7,729,959
Change in Net Position:										
Governmental Activities	(416,330)	(234,297)	(459,261)	(389,469)	(504,181)	(383,227)	344,547	426,217	(112,361)	(281,347)
Business-Type Activities	(17,017)	2,488	2,670	(1,331)	(6,755)	(14,118)	- 0 -	32,437	(8,156)	(20,298)
Total Charter School-Wide Change in Net Position	\$ (433,347)	\$ (231,809)	\$ (456,591)	\$ (390,800)	\$ (510,936)	\$ (397,345)	\$ 344,547	\$ 458,654	\$ (120,517)	\$ (301,645)

Source: Princeton Charter School Financial Reports.

PRINCETON CHARTER SCHOOL
FUND BALANCES - GOVERNMENTAL FUNDS
LAST TEN FISCAL YEARS
 (UNAUDITED)
(Modified Accrual Basis of Accounting)

	June 30,										
	2015	2016	2017	2018	2019	2019	2019	2021	2022	2023	2024
General Fund:											
Restricted	\$ 75,000	\$ 75,000	\$ 75,000	\$ 75,000	\$ 75,000	\$ 75,000	\$ 75,000	\$ 94,726	\$ 101,772	\$ 109,189	\$ 105,694
Unassigned	187,970	359,511	490,761	574,817	617,141	617,141	617,141	1,381,159	212,181	130,785	156,244
Total General Fund	\$ 262,970	\$ 434,511	\$ 565,761	\$ 649,817	\$ 692,141	\$ 692,141	\$ 692,141	\$1,475,885	\$ 313,953	\$ 239,974	\$ 261,938
Other Governmental Funds:											
Restricted								\$ 14,115	\$ 16,478	\$ 18,321	\$ 9,456
Committed								1,816,332	199,707	10,865	
Unassigned/(Deficit)											
Capital Projects Fund	\$ - 0 -	\$ - 0 -	\$ - 0 -	\$ (349,482)	\$ (543,135)	\$ (543,135)	\$ (543,135)				
Total All Funds	\$ 262,970	\$ 434,511	\$ 565,761	\$ 300,335	\$ 149,006	\$ 149,006	\$ 149,006	\$3,306,332	\$ 530,138	\$ 269,160	\$ 271,394

Source: Princeton Charter School Financial Reports.

PRINCETON CHARTER SCHOOL
CHANGES IN FUND BALANCES - GOVERNMENTAL FUNDS
LAST TEN FISCAL YEARS
(UNAUDITED)
(Modified Accrual Basis of Accounting)

For the Fiscal Year Ending June 30,

	2015	2016	2017	2018	2019	2020	2021	2022	2023	2024
Revenues:										
Local Tax Levy										
Equalization Aid	\$ 4,819,869	\$ 4,792,581	\$ 4,693,659	\$ 5,245,919	\$ 6,060,133	\$ 6,464,767	\$ 6,433,698	\$ 6,638,973	\$ 6,538,180	\$ 7,123,589
Rents and Royalties									45,524	41,077
Grants and Contributions	50,000	50,000	152,000						120,000	169,551
Miscellaneous - Restricted	179,584	142,149	64,093	170,672	126,343	89,975	95,641	641,570	168,863	46,694
State Sources	1,057,961	1,162,554	1,351,511	1,704,484	1,323,489	1,291,241	1,501,416	2,218,475	2,348,575	2,428,386
Federal Sources	53,081	79,837	76,013	148,879	148,879	144,925	219,450	383,171	260,280	106,346
Total Revenue	6,160,495	6,227,121	6,337,276	7,269,954	7,658,844	7,990,908	8,250,205	9,882,189	9,481,422	9,915,643
Expenditures:										
Instruction:										
Regular Instruction	2,598,349	2,592,214	2,678,456	3,275,699	3,427,454	3,562,375	3,952,590	3,914,294	3,994,158	3,988,867
Special Education Instruction				55,875	55,875	60,872	65,776	85,645	68,189	87,530
Other Special Instruction										
Other Instruction				4,148	4,856	3,004	212	2,494	3,999	17,305
Student & Instruction Related Services	364,256	244,639	308,755	101,223	204,331	121,933	127,961	226,102	186,747	470,485
General Administration Services	930,903	939,473	919,171	754,028	950,579	921,696	859,037	940,562	898,271	988,014
School Administration Services				205,906	6,313	610	500	890	2,093	251
Central Services				219,939	91,276	118,257	152,593	168,703	175,525	185,604
Administrative Information Technology				109,322	86,471	97,171	113,614	192,631	122,691	163,268
Plant Operations And Maintenance	637,584	608,645	596,453	563,594	654,109	614,573	496,487	675,502	600,832	595,170
Pupil Transportation	12,446	11,958	13,171	8,615	14,870	12,750		19,860	30,327	34,511
Employee Benefits	1,152,227	1,231,986	1,237,114	1,389,170	1,583,322	1,769,431	2,118,126	2,384,484	2,596,682	2,584,006
Capital Outlay	64,479	22,217		* 489,223	* 699,287	* 557,235	* 2,796,965	* 4,047,216	* 1,062,886	* 798,398
Debt Service:										
Principal	323,818	183,726	207,969							
Interest and Other Charges	300,679	220,722	234,937							
Total Expenditures	6,384,741	6,055,580	6,196,026	7,176,742	7,778,743	7,839,907	10,683,861	12,658,383	9,742,400	9,913,409
Excess/(Deficiency) of Revenues	(224,246)	171,541	141,250	93,212	(119,899)	151,001	(2,433,656)	(2,776,194)	(260,978)	2,234
Over/(Under) Expenditures										

PRINCETON CHARTER SCHOOL
CHANGES IN FUND BALANCES - GOVERNMENTAL FUNDS

LAST TEN FISCAL YEARS

(UNAUDITED)

(Modified Accrual Basis of Accounting)

For the Fiscal Year Ending June 30,

	2015	2016	2017	2018	2019	2020	2021	2022	2023	2024
Other Financing Sources (Uses):										
Loan Proceeds	\$ 720,855						\$ 4,500,000			
Debt Issuance Costs	(92,141)									
Loss on Refunding	(616,200)									
Mortgage Note Payments - Interest	(12,514)						928,000			
PPP Loan Forgiveness							(5,516)			
Transfers Out			\$ (10,000)	\$ (9,156)	\$ (31,430)	\$ (11,586)				
			(10,000)	(9,156)	(31,430)	(11,586)	5,422,484			
Total Other Financing Sources (Uses)										
Net Change In Fund Balances	\$ (224,246)	\$ 171,541	\$ 131,250	\$ 84,056	\$ (151,329)	\$ 139,415	\$ 2,988,828	\$ (2,776,194)	\$ (260,978)	\$ 2,234
Debt Service as a Percentage of Noncapital Expenditures	9.88%	6.70%	7.15%	6.22%	5.92%	5.77%	5.35%	7.71%	7.84%	7.46%

* - Includes principal and interest on mortgage expenditures which are factored into the debt service as a percentage of noncapital expenditures.

Source: Princeton Charter School Financial Reports.

PRINCETON CHARTER SCHOOL
GENERAL FUND - OTHER LOCAL REVENUE BY SOURCE
LAST TEN FISCAL YEARS
 (UNAUDITED)
(Modified Accrual Basis of Accounting)

<u>Fiscal Year Ended June 30,</u>	<u>Local Levy Charter School Aid Local Share</u>	<u>Interest on Investments</u>	<u>Miscellaneous</u>	<u>Private Contributions</u>	<u>Total</u>
2015	\$ 4,819,869		\$ 48,977	\$ 50,000	\$ 4,918,846
2016	4,792,581		97,872	50,000	4,940,453
2017	4,693,659		41,790	152,000	4,887,449
2018	5,245,919	\$ 380	170,292		5,416,591
2019	6,060,133	42	126,301		6,186,476
2020	6,464,767		89,975		6,554,742
2021	6,433,698		94,638		6,528,336
2022	6,638,973		77,987		6,716,960
2023	6,538,180		146,045	120,000	6,804,225
2024	7,123,589		61,893	169,551	7,355,033

Source: Princeton Charter School Financial Reports.

PRINCETON CHARTER SCHOOL
RATIOS OF OUTSTANDING DEBT BY TYPE
LAST TEN FISCAL YEARS
(UNAUDITED)

Fiscal Year Ended June 30,	Governmental Activities		Total Charter School	Percentage of Personal Income ^a	Per Capita ^a
	General Obligation Bonds	Mortgage Loans Payable			
2015		\$ 7,756,000	\$ 7,756,000	0.41%	\$ 261.41
2016		7,571,057	7,571,057	0.38%	251.31
2017		7,363,088	7,363,088	0.36%	237.37
2018		7,148,144	7,148,144	0.34%	227.71
2019		6,925,974	6,925,974	0.31%	221.23
2020		6,696,953	6,696,953	0.29%	214.92
2021		10,959,562	10,959,562	0.46%	354.92
2022		10,653,884	10,653,884	0.44%	345.10
2023		10,276,831	10,276,831	0.43%	338.31
2024		9,887,663	9,887,663	0.41%	326.44

Note: Details regarding the Charter School's outstanding debt can be found in the notes to the basic financial statements.

a - See Exhibit J-14 for personal income and population data. These ratios are calculated using personal income and population for the prior calendar year.

Source: Princeton Charter School Financial Reports.

PRINCETON CHARTER SCHOOL
DEMOGRAPHIC AND ECONOMIC STATISTICS
LAST TEN YEARS
(UNAUDITED)

<u>Year</u>	<u>Princeton Borough Population ^a</u>	<u>Mercer County Per Capita Personal Income ^b</u>	<u>Princeton Borough Personal Income ^c</u>	<u>Unemployment Rate ^d</u>
2014	29,670	\$ 61,500	\$ 1,824,705,000	3.70%
2015	30,126	62,788	1,891,551,288	3.10%
2016	31,019	63,905	1,982,269,195	2.80%
2017	31,391	65,247	2,048,168,577	2.60%
2018	31,306	68,052	2,130,435,912	2.20%
2019	31,160	70,675	2,202,233,000	1.90%
2020	30,879	74,218	2,291,777,622	4.00%
2021	30,872	77,911	2,405,268,392	3.00%
2022	30,377	79,354	2,410,536,458	2.10%
2023	30,289	79,354 **	2,403,553,306 ***	2.70%
2024	30,289 *	79,354 **	2,403,553,306 ***	N/A

N/A - Information is not available.

* - Latest population data available (2023) was used for calculation purposes.

** - Latest Mercer County per capita personal income available (2022) was used for calculation purposes.

*** - Latest Mercer County population (2023) per capita personal income available (2022) was used for calculation purposes.

Sources:

- ^a Population information provided by the NJ Department of Labor and Workforce Development.
- ^b Personal income has been estimated based upon the municipal population and per capita personal income presented.
- ^d Unemployment data provided by the NJ Department of Labor and Workforce Development.

PRINCETON CHARTER SCHOOL
FULL-TIME EQUIVALENT DISTRICT EMPLOYEES BY FUNCTION/PROGRAM
LAST TEN FISCAL YEARS
 (UNAUDITED)

<u>Function/Program</u>	<u>2015</u>	<u>2016</u>	<u>2017</u>	<u>2018</u>	<u>2019</u>	<u>2020</u>	<u>2021</u>	<u>2022</u>	<u>2023</u>	<u>2024</u>
Instruction:										
Regular	28	30	30	37	37	37	44	44	44	42
Other Instruction	6	2	5	3	4	5	4	3	4	3
Support Services:										
School counselor	1	1	1	1	1	1	1	1	1	1
General Administration and Business Services	4	4	5	5	5	5	3	3	3	5
School Administration Services	5	5	4	3	3	3	4	4	4	4
Plant Operations and Maintenance	1	1	1	1	1	1	1	1	1	1
Total	<u>45</u>	<u>43</u>	<u>46</u>	<u>50</u>	<u>51</u>	<u>52</u>	<u>57</u>	<u>56</u>	<u>57</u>	<u>56</u>

Source: Princeton Charter School Business Office.

PRINCETON CHARTER SCHOOL
OPERATING STATISTICS
LAST TEN FISCAL YEARS
 (UNAUDITED)

Fiscal Year	Enrollment	Operating Expenditures ^a	Cost Per Pupil ^b	Percent Change	Teaching Staff ^c	Pupil/Teacher Ratio	Average Daily Enrollment (ADE) ^d	Average Daily Attendance (ADA) ^d	% Change Average Daily Enrollment	Student Attendance Percentage
2015	348	\$ 5,695,765	\$ 16,367	9.25%	34	11:1	347.2	335	0.93%	96.49%
2016	348	5,628,915	16,175	-1.17%	32	11:1	347.7	336	0.14%	96.64%
2017	348	5,753,120	16,532	2.21%	35	11:1	347.6	332	-0.03%	95.51%
2018	398	6,718,944	16,882	16.79%	40	10:1	399.0	381	14.79%	95.49%
2019	422	7,079,456	16,776	5.37%	41	10:1	421.8	406	5.71%	96.25%
2020	422	7,282,672	17,258	2.87%	41	10:1	422.5	407	0.17%	96.33%
2021	423	7,886,896	18,645	8.30%	40	10:1	418.0	393	-1.07%	94.02%
2022	423	8,611,167	20,357	9.18%	40	10:1	423.0	403	1.20%	95.27%
2023	423	8,679,514	20,519	0.79%	40	10:1	421.0	405	-0.47%	96.20%
2024	429	9,115,011	21,247	5.02%	45	10:1	424.0	409	0.71%	96.46%

Note: Enrollment is based on final June enrollment count.

^a Operating expenditures equal total expenditures less capital outlay.

^b Cost per pupil is calculated based upon enrollment and operating expenditures presented and may not be the same as other cost per pupil calculations.

^b Teaching staff includes only full-time equivalents of certificated staff.

^d Average daily enrollment and average daily attendance are obtained from the School Register Summary (SRS).

Source: Princeton Charter School Business Office.

PRINCETON CHARTER SCHOOL
SCHOOL BUILDING INFORMATION
LAST TEN FISCAL YEARS
(UNAUDITED)

<u>District Building</u>	2015	2016	2017	2018	2019	2020	2021	2022	2023	2024
Multi-Purpose Campus Center										
Square Feet	17,000	17,000	17,000	17,000	17,000	17,000	17,000	17,000	17,000	17,000
Capacity (Students)	1,100	1,100	1,100	1,100	1,100	1,100	1,100	1,100	1,100	1,100
Enrollment	N/A	N/A	N/A	N/A	N/A	N/A	N/A	N/A	N/A	N/A
K-4 School Building (2003)										
Square Feet	14,800	14,800	14,800	14,800	14,800	14,800	14,800	17,337	17,337	17,337
Capacity (Students)	159	159	159	202	202	202	202	252	252	252
Enrollment	159	159	159	201	199	199	199	224	224	227
5-8 School Building (1963)										
Square Feet	16,800	16,800	16,800	16,800	16,800	16,800	16,800	22,035	22,035	22,035
Capacity (Students)	188	188	188	200	200	200	200	250	250	250
Enrollment	188	188	188	197	223	223	223	200	199	202
Business Office Building - Marsee Center (1879)										
Square Feet	1,200	1,200	1,200	1,200	1,200	1,200	1,200	1,200	1,200	1,200

Number of Schools at June 30, 2024:

Elementary = 1

Middle School = 1

Note: Year of original construction is shown in parentheses. Enrollment is based on the final June school count.

N/A - Not Applicable

Source: Princeton Charter School Facilities Office

PRINCETON CHARTER SCHOOL
INSURANCE SCHEDULE
JUNE 30, 2024
(UNAUDITED)

	<u>Coverage</u>	<u>Deductible</u>
School Package Policy - N.J. Schools Insurance Group:		
Property:		
Blanket Building and Contents	\$ 16,451,854	\$ 1,000
Blanket Extra Expense	50,000,000	1,000
Blanket Valuable Papers and Records	10,000,000	1,000
Business Income	3,000,000	1,000
Loss of Rents	31,000	1,000
Flood - Zones A & V - Pool Aggregate	25,000,000	500,000
Flood - All Other	75,000,000	10,000
EDP:		
Blanket Hardware/Software	250,000	1,000
Blanket Extra Expense	Included	
Equipment Breakdown:		
Property Damage & Extra Expense	16,451,854	25,000
Crime:		
Public Employee Dishonesty	250,000	1,000
Forgery or Alteration	250,000	1,000
Computer Fraud	250,000	1,000
Money Orders & Counterfeit Papers	50,000	500
Loss of Money & Securities	50,000	500
General Liability		
Each Occurrence CSL	31,000,000	
Products/Completed Ops Ann Agg	31,000,000	
Sexual Abuse per OCC	27,000,000	
Sexual Abuse Annual Pool Agg	27,000,000	
Personal Injury & Advertising Injury	31,000,000	
Employee Benefits	31,000,000	1,000
Medical Payments	10,000	
Automobile:		
Comprehensive Automobile Liability	31,000,000	
Errors and Omissions	31,000,000	10,000

PRINCETON CHARTER SCHOOL
INSURANCE SCHEDULE
JUNE 30, 2024
(UNAUDITED)

	<u>Coverage</u>	<u>Deductible</u>
School Package Policy - N.J. Schools Insurance Group:		
Boiler and Machinery	\$ 100,000,000	\$ 1,000
Workers Compensation - N.J. Schools Insurance Group		
Bodily Injury by Accident	2,000,000	Each Acc.
Bodily Injury by Disease	2,000,000	Each Employee
Bodily Injury by Disease	2,000,000	Agg. Limit
Supplemental Workers Compensation:		
Maximum weekly benefit (52 weeks Maximum Benefit Period)	2,500	
Student Accident Insurance:		
Basic Sports K-8	5,000,000	
Volunteer Coverage	25,000	
Surety Bond:		
Board Secretary/School Business Administrator	180,000	1,000
Group Catastrophe Access Program:		
Limit each occurrence	50,000,000	
Aggregate	150,000,000	

Source: Princeton Charter School Business Office.

PRINCETON CHARTER SCHOOL
FINANCIAL PERFORMANCE - GOVERNMENTAL ACTIVITIES
LAST SIX FISCAL YEARS
(UNAUDITED)

	2019	2020	2021	2022	2023	2024
Cash	\$ 50,904	\$ 1,112,395	\$ 255,829	\$ 230,545	\$ 103,248	\$ 171,411
Current Assets	131,567	140,414	3,053,442	423,435	167,530	284,000
Noncurrent Assets		952,242	565,451	19,647	210,928	264,261
Capital Assets, Net	10,253,705	9,761,195	11,413,258	14,250,081	13,956,208	13,398,611
Total Assets	10,436,176	11,966,246	15,287,980	14,923,708	14,437,914	14,118,283
Deferred Outflows	1,552,666	892,741	668,128	705,124	1,116,231	1,059,012
Current Liabilities	103,280	977,399	45,033	222,857	126,967	321,901
Long-Term Liabilities	8,429,798	7,699,810	11,587,053	11,214,246	11,461,776	11,246,110
Total Liabilities	8,533,078	8,677,209	11,632,086	11,437,103	11,588,743	11,568,011
Deferred Inflows	438,265	1,389,841	1,187,538	629,028	564,748	440,291
Net Position	\$ 3,017,499	\$ 2,791,937	\$ 3,136,484	\$ 3,562,701	\$ 3,400,654	\$ 3,168,993
Total Revenue	\$ 8,278,712	\$ 8,407,247	\$ 9,689,756	\$ 9,610,617	\$ 9,233,063	\$ 9,560,926
Total Expenses	8,609,867	8,661,892	9,345,209	9,184,400	9,395,110	9,842,273
Change in Net Position	\$ (331,155)	\$ (254,645)	\$ 344,547	\$ 426,217	\$ (162,047)	\$ (281,347)
Depreciation Expense	\$ 501,253	\$ 492,510	\$ 488,470	\$ 479,802	\$ 482,715	\$ 607,817
Principal Payments	\$ 222,170	\$ 229,021	\$ 237,391	\$ 321,382	\$ 357,930	\$ 389,168
Interest Payments	\$ 226,743	\$ 217,255	\$ 293,865	\$ 342,226	\$ 392,014	\$ 327,996
Final Average Daily Enrollment	421.8	422.5	407.0	423.0	421.0	405.0
March 30th Budgeted Enrollment	412	424	424	424	424	424
Near Term Indicators:						
Current Ratio	1.27	0.14	67.80	1.90	1.32	0.88
Unrestricted Days Cash	1.78	33.93	6.11	5.64	2.61	4.43
Enrollment Variance	102.38%	99.65%	95.99%	99.76%	99.29%	95.52%
Default	No	No	No	No	No	No
Sustainability Indicators:						
Cash Flow	\$ (121,427)	\$ 1,061,491	\$ (856,566)	\$ (25,284)	\$ (127,297)	\$ 68,163
Debt Service Coverage Ratio	N/A	N/A	N/A	N/A	N/A	N/A

N/A - Not Applicable

Source: Princeton Charter School Business Office.

SINGLE AUDIT SECTION

Report on Internal Control over Financial Reporting and on Compliance and Other Matters Based
on an Audit of Financial Statements Performed in Accordance with *Government Auditing Standards*

Independent Auditors' Report

The Honorable President and Members
of the Board of Trustees
Princeton Charter School
County of Mercer, New Jersey

We have audited, in accordance with the auditing standards generally accepted in the United States of America, the standards applicable to financial audits contained in *Government Auditing Standards* issued by the Comptroller General of the United States and the audit requirements prescribed by the Office of School Finance, Department of Education, State of New Jersey (the "Office"), the financial statements of the governmental activities, the business-type activities, each major fund, and the aggregate remaining fund information of the Princeton Charter School (the "Charter School"), in the County of Mercer, as of and for the fiscal year ended June 30, 2024, and the related notes to the financial statements, which collectively comprise the District's basic financial statements, and have issued our report thereon dated November 22, 2024.

Report on Internal Control Over Financial Reporting

In planning and performing our audit of the financial statements, we considered the Charter School's internal control over financial reporting (internal control) as a basis for designing audit procedures that are appropriate in the circumstances for the purpose of expressing our opinions on the financial statements, but not for the purpose of expressing an opinion on the effectiveness of the Charter School's internal control. Accordingly, we do not express an opinion on the effectiveness of the Charter School's internal control.

A deficiency in internal control exists when the design or operation of a control does not allow management or employees, in the normal course of performing their assigned functions, to prevent, or detect and correct, misstatements on a timely basis. *A material weakness* is a deficiency, or a combination of deficiencies, in internal control such that there is a reasonable possibility that a material misstatement of the Charter School's financial statements will not be prevented or detected and corrected on a timely basis. *A significant deficiency* is a deficiency, or a combination of deficiencies, in internal control that is less severe than a material weakness, yet important enough to merit attention by those charged with governance.

Our consideration of the internal control was for the limited purpose described in the first paragraph of this section and was not designed to identify all deficiencies in internal control that might be material weaknesses or significant deficiencies. Given these limitations, during our audit we did not identify any deficiencies in internal control that we consider to be material weaknesses. However, material weaknesses or significant deficiencies may exist that were not identified.

The Honorable President and Members
of the Board of Trustees
Princeton Charter School
Page 2

Report on Compliance and Other Matters

As part of obtaining reasonable assurance about whether the Charter School's financial statements are free of material misstatement, we performed tests of its compliance with certain provisions of laws, regulations, contracts, and grant agreements, noncompliance with which could have a direct and material effect on the financial statements. However, providing an opinion on compliance with those provisions was not an objective of our audit, and accordingly, we do not express such an opinion. The results of our tests disclosed no instances of noncompliance or other matters that are required to be reported under *Government Auditing Standards*.

Purpose of this Report

The purpose of this report is solely to describe the scope of our testing of internal control and compliance and the result of that testing, and not to provide an opinion on the effectiveness of the Charter School's internal control or on compliance. This report is an integral part of an audit performed in accordance with *Government Auditing Standards* in considering the Charter School's internal control and compliance. Accordingly, this communication is not suitable for any other purpose.

November 22, 2024
Mount Arlington, New Jersey

Nisivoccia, LLP

NISIVOCCIA LLP

Kathryn L. Mantell

Kathryn L. Mantell
Licensed Public School Accountant #884
Certified Public Accountant

Report on Compliance for Each Major State Program;
Report on Internal Control over Compliance Required by NJOMB 15-08

Independent Auditors' Report

The Honorable President and Members
of the Board of Trustees
Princeton Charter School
County of Mercer, New Jersey

Report on Compliance for Each Major State Program

Opinion on Each Major State Program

We have audited the Princeton Charter School (the "Charter School's") compliance with the types of compliance requirements identified as subject to audit and the *New Jersey State Aid/Grant Compliance Supplement* that could have a direct and material effect on the Charter School's major state program for the fiscal year ended June 30, 2024. The Charter School's major state program is identified in the summary of auditors' results section of the accompanying Schedule of Findings and Questioned Costs.

In our opinion, the Charter School complied, in all material respects, with the compliance requirements referred to above that could have a direct and material effect on its major state program for the fiscal year ended June 30, 2024.

Basis for Opinion on Each Major State Program

We conducted our audit of compliance in accordance with auditing standards generally accepted in the United States of America (GAAS); the standards applicable to financial audits contained in *Government Auditing Standards* issued by the Comptroller General of the United States (*Government Auditing Standards*); the audit requirements of Title 2 U.S. *Code of Federal Regulations* Part 200, *Uniform Administrative Requirements, Cost Principles, and Audit Requirements for Federal Awards* (Uniform Guidance) and New Jersey's OMB Circular 15-08, *Single Audit Policy for Recipients of Federal Grants, State Grants, and State Aid*. Our responsibilities under those standards, the Uniform Guidance and New Jersey's OMB Circular 15-08 are further described in the Auditor's Responsibilities for the Audit of Compliance section of our report.

We are required to be independent of the Charter School and to meet our other ethical responsibilities, in accordance with relevant ethical requirements relating to our audit. We believe that the audit evidence we have obtained is sufficient and appropriate to provide a basis for our opinion on compliance for the major state program. Our audit does not provide a legal determination of the Charter School's compliance with the compliance requirements referred to above.

The Honorable President and Members
of the Board of Trustees
Princeton Charter School
Page 2

Responsibilities of Management for Compliance

Management is responsible for compliance with the requirements referred to above and for the design, implementation, and maintenance of effective internal control over compliance with the requirements of laws, statutes, regulations, rules and provisions of contracts or grant agreements applicable to the Charter School's federal and state programs.

Auditors' Responsibilities for the Audit of Compliance

Our objectives are to obtain reasonable assurance about whether material noncompliance with the compliance requirements referred to above occurred, whether due to fraud or error, and express an opinion on the Charter School's compliance based on our audit. Reasonable assurance is a high level of assurance but is not absolute assurance and therefore is not a guarantee that an audit conducted in accordance with GAAS, *Government Auditing Standards*, the Uniform Guidance and New Jersey's OMB Circular 15-08 will always detect material noncompliance when it exists. The risk of not detecting material noncompliance resulting from fraud is higher than for that resulting from error, as fraud may involve collusion, forgery, intentional omissions, misrepresentations, or the override of internal control. Noncompliance with the compliance requirements referred to above is considered material, if there is a substantial likelihood that, individually or in the aggregate, it would influence the judgment made by a reasonable user of the report on compliance about the Charter School's compliance with the requirements of the major state program as a whole.

In performing an audit in accordance with GAAS, *Government Auditing Standards*, the Uniform Guidance and New Jersey's OMB Circular 15-08, we

- exercise professional judgment and maintain professional skepticism throughout the audit.
- identify and assess the risks of material noncompliance, whether due to fraud or error, and design and perform audit procedures responsive to those risks. Such procedures include examining, on a test basis, evidence regarding the Charter School's compliance with the compliance requirements referred to above and performing such other procedures as we considered necessary in the circumstances.
- obtain an understanding of the Charter School's internal control over compliance relevant to the audit in order to design audit procedures that are appropriate in the circumstances and to test and report on internal control over compliance in accordance with the Uniform Guidance and New Jersey's OMB Circular 15-08, but not for the purpose of expressing an opinion on the effectiveness of the Charter School's internal control over compliance. Accordingly, no such opinion is expressed.

We are required to communicate with those charged with governance regarding, among other matters, the planned scope and timing of the audit and any significant deficiencies and material weaknesses in internal control over compliance that we identified during the audit.

The Honorable President and Members
of the Board of Trustees
Princeton Charter School
Page 3

Report on Internal Control Over Compliance

A deficiency in internal control over compliance exists when the design or operation of a control over compliance does not allow management or employees, in the normal course of performing their assigned functions, to prevent, or detect and correct, noncompliance with a type of compliance requirement of a federal or state program on a timely basis. A material weakness in internal control over compliance is a deficiency, or a combination of deficiencies, in internal control over compliance, such that there is a reasonable possibility that material noncompliance with a type of compliance requirement of a federal or state program will not be prevented, or detected and corrected, on a timely basis. A significant deficiency in internal control over compliance is a deficiency, or a combination of deficiencies, in internal control over compliance with a type of compliance requirement of a federal or state program that is less severe than a material weakness in internal control over compliance, yet important enough to merit attention by those charged with governance.

Our consideration of internal control over compliance was for the limited purpose described in the Auditor's Responsibilities for the Audit of Compliance section above and was not designed to identify all deficiencies in internal control over compliance that might be material weaknesses or significant deficiencies in internal control over compliance. Given these limitations, during our audit we did not identify any deficiencies in internal control over compliance that we consider to be material weaknesses, as defined above. However, material weaknesses or significant deficiencies in internal control over compliance may exist that were not identified.

Our audit was not designed for the purpose of expressing an opinion on the effectiveness of internal control over compliance. Accordingly, no such opinion is expressed.

The purpose of this report on internal control over compliance is solely to describe the scope of our testing of internal control over compliance and the results of that testing based on the requirements of the Uniform Guidance or New Jersey's OMB Circular 15-08. Accordingly, this report is not suitable for any other purpose.

November 22, 2024
Mount Arlington, New Jersey

Nisivoccia, LLP
NISIVOCCIA LLP

Kathryn L. Mantell

Kathryn L. Mantell
Licensed Public School Accountant #884
Certified Public Accountant

PRINCETON CHARTER SCHOOL
SCHEDULE OF EXPENDITURES OF FEDERAL AWARDS
FOR THE PERIOD ENDED JUNE 30, 2024

Federal Grantor/Pass Through Grantor/Program Title/Cluster Title	Assistance Listing Number	Grant or State Project Number	Grant Period	Award Amount	Balance June 30, 2023		Balance June 30, 2024		Amount Paid to Sub- Recipients
					Budgetary Accounts Receivable	Cash Received	Budgetary Expenditures	Budgetary Accounts Receivable	
Special Revenue Fund:									
US Department of Education Passed-through State of New Jersey Department of Education									
Special Education Cluster (IDEA):									
IDEA-B, Basic	84.027A	IDEA-7540-23	7/1/23-9/30/24	\$ 71,827		\$ 71,827	\$ (71,827)		
IDEA-B, Preschool	84.173A	IDEA-7540-23	7/1/23-9/30/24	1,713		1,713	(1,713)		
Total Special Education Cluster (IDEA)									
						73,540	(73,540)		
Elementary and Secondary Education Act:									
Title I - Part A									
Total Elementary and Secondary Education Act:	84.010A	ESEA-7540-23	7/1/23-9/30/24	32,806		32,806	(32,806)		
Education Stabilization Fund:									
COVID 19 - ARP:	84.425U	S425U210027	3/13/20-9/30/24	45,000	\$ (18,305)	18,305			
Mental Health					(18,305)	18,305			
Total Education Stabilization Fund					(18,305)	124,651	(106,346)		
Total Special Revenue Fund									
Enterprise Fund:									
U.S. Department of Agriculture									
Passed-through State Department of Agriculture									
Child Nutrition Cluster:									
National School Lunch Program	10.555	N/A	7/1/22-6/30/23	15,491	(603)	603			
National School Lunch Program	10.555	N/A	7/1/23-6/30/24	13,396		12,740	(13,396)	\$ (656)	
Healthy Hunger Free Kids Act	10.555	N/A	7/1/23-6/30/24	1,515		1,442	(1,515)	(73)	
Total Child Nutrition Cluster					(603)	14,785	(14,911)	(729)	
COVID - 19 Pandemic Benefit Transfer	10.649	N/A	7/1/23-6/30/24	653		653	(653)		
Total U.S. Department of Education/Enterprise Fund					(603)	15,438	(15,564)	(729)	
Total Federal Awards					\$ (18,908)	\$ 140,089	\$ (121,910)	\$ (729)	\$ - 0 -
N/A - Not Available/Applicable									

SEE ACCOMPANYING NOTES TO SCHEDULES OF EXPENDITURES OF FEDERAL AND STATE AWARDS

PRINCETON CHARTER SCHOOL
SCHEDULE OF EXPENDITURES OF STATE AWARDS
FOR THE PERIOD ENDED JUNE 30, 2024

State Grantor/Program Title	Grant or State Project Number	Grant Period	Award Amount	June 30, 2023		June 30, 2024		MEMO	
				Budgetary (Accounts Receivable)	Cash Received	Budgetary Expenditures	GAAP (Accounts Receivable)	Budgetary (Accounts Receivable)	Cumulative Total Expenditures
State Department of Education:									
General Fund:									
Security Aid	24-495-034-5120-084	7/1/23-6/30/24	\$ 41,477	\$	\$ 41,477	\$ (41,477)			\$ 41,477
Equalization Aid	24-495-034-5120-078	7/1/23-6/30/24	374,926		374,926	(374,926)			374,926
Special Education Aid	24-495-034-5120-089	7/1/23-6/30/24	158,672		158,672	(158,672)			158,672
Reimbursed TPAF Social Security Contributions	24-495-034-5094-003	7/1/23-6/30/24	228,813		194,211	(228,813)	\$ (34,602)	\$ (34,602)	228,813
Reimbursed TPAF Social Security Contributions	23-495-034-5094-003	7/1/22-6/30/23	234,930	\$ (11,389)	11,389				234,930
On-Behalf TPAF Pension Contributions	24-495-034-5094-002	7/1/23-6/30/24	1,170,605		1,170,605	(1,170,605)			1,170,605
On-Behalf TPAF Post Retirement Contributions	24-495-034-5094-001	7/1/23-6/30/24	322,229		322,229	(322,229)			322,229
On-Behalf TPAF Long-Term Disability Insurance	24-495-034-5094-004	7/1/23-6/30/24	601		601	(601)			601
On-Behalf TPAF Non-Contributory Insurance	24-495-034-5094-004	7/1/23-6/30/24	13,350		13,350	(13,350)			13,350
Total General Fund				(11,389)	2,287,460	(2,310,673)	(34,602)	(34,602)	2,545,603
Enterprise Fund:									
State School Lunch Program	23-100-010-3350-023	7/1/22-6/30/23	1,014	(39)	39				1,014
State School Reduced Lunch Program	23-100-010-3350-023	7/1/22-6/30/23	130	(6)	6				130
State School Lunch Program	24-100-010-3350-023	7/1/23-6/30/24	1,311		1,248	(1,311)	(63)	(63)	1,311
New Jersey Extended Income Eligibility - Lunch	24-100-010-3350-023	7/1/23-6/30/24	304		304	(304)			304
Total Enterprise Fund				(45)	1,597	(1,615)	(63)	(63)	2,759
N.J. Schools Development Authority:									
Special Revenue Fund:									
Emergent and Capital Maintenance Needs	N/A	11/19/23-6/30/24	127,288		127,288	(117,713)	\$ 9,575		117,713
Total N.J. School Development Authority					127,288	(117,713)	9,575		117,713
Total State Awards				\$ (11,434)	\$ 2,416,345	\$ (2,430,001)	\$ (34,665)	\$ (34,665)	\$ 2,666,075
Less: State Awards Not Subject to Single Audit Major Program Determination									
On-Behalf TPAF Pension System Contributions:									
On-Behalf TPAF Pension Contributions	24-495-034-5094-002	7/1/23-6/30/24	1,170,605			\$ 1,170,605			
On-Behalf TPAF Post Retirement Contributions	24-495-034-5094-001	7/1/23-6/30/24	322,229			322,229			
On-Behalf TPAF Long-Term Disability Insurance	24-495-034-5094-004	7/1/23-6/30/24	601			601			
On-Behalf TPAF Non-Contributory Insurance	24-495-034-5094-004	7/1/23-6/30/24	13,350			13,350			
Total On-Behalf TPAF Pension System Contributions						1,506,785			
Total State Awards Subject to Single Audit Major Program Determination						\$ (923,216)			

SEE ACCOMPANYING NOTES TO SCHEDULES OF EXPENDITURES OF FEDERAL AND STATE AWARDS

PRINCETON CHARTER SCHOOL
NOTES TO SCHEDULES OF EXPENDITURES OF FEDERAL AND STATE AWARDS
FOR THE FISCAL YEAR ENDED JUNE 30, 2024

NOTE 1. GENERAL

The accompanying Schedules of Expenditures of Federal and State Awards include federal and state grant activity of the Board of Trustees, Princeton Charter School under programs of the federal and state governments for the fiscal year ended June 30, 2024. The information in these schedules is presented in accordance with the requirements of Title 2 U.S. Code of Federal Regulations Part 200, *Uniform Administrative Requirements, Cost Principles, and Audit Requirements for Federal Awards* ("Uniform Guidance") and New Jersey's OMB Circular 15-08, *Single Audit Policy for Recipients of Federal Grants, State Grants and State Aid*. Because the schedules present only a selected portion of the operations of the Charter School, they are not intended to and do not present the financial position, changes in net position or cash flows of the Charter School.

NOTE 2. SUMMARY OF SIGNIFICANT ACCOUNTING POLICIES

Expenditures reported on the accompanying schedules of expenditures of federal and state awards are reported on the budgetary basis of accounting with the exception of programs recorded in the food service fund, which are presented on the accrual basis of accounting. These bases of accounting are described in Note 1 to the Charter School's basic financial statements. Such expenditures are recognized following the cost principles contained in the Uniform Guidance, wherein certain types of expenditures are not allowable or are limited as to reimbursement. Negative amounts, if any, shown on the Schedules represent adjustments or credits made in the normal course of business to amounts reported as expenditures in prior years.

NOTE 3. INDIRECT COST RATE

The Charter School has not elected to use the 10 percent de minimis indirect cost rate as allowed under the Uniform Guidance.

NOTE 4. RELATIONSHIP TO BASIC FINANCIAL STATEMENTS

The basic financial statements present the General and Special Revenue Funds on the GAAP basis. Budgetary comparison statements or schedules (RSI) are presented for the General and Special Revenue Funds to demonstrate finance-related legal compliance in which certain revenue is permitted by law or grant agreement to be recognized in the audit year, whereas for GAAP reporting, revenue is not recognized until the subsequent year or when expenditures have been made.

The General Fund is presented in the accompanying schedules on the modified accrual basis.

The Special Revenue Fund is presented in the accompanying schedules on the grant accounting budgetary basis which recognizes encumbrances as expenditures and also recognizes the related revenue, whereas the GAAP basis does not.

PRINCETON CHARTER SCHOOL
NOTES TO SCHEDULES OF EXPENDITURES OF FEDERAL AND STATE AWARDS
FOR THE FISCAL YEAR ENDED JUNE 30, 2024
(Continued)

NOTE 4. RELATIONSHIP TO BASIC FINANCIAL STATEMENTS (Cont'd)

The net adjustment to reconcile revenue from the budgetary basis to the GAAP basis is \$-0- for the General and Special Revenue Funds. Revenue from Federal and State awards is reported on the Charter School's basic financial statements on a GAAP basis as presented below:

	<u>Federal</u>	<u>State</u>	<u>Total</u>
General Fund		\$ 2,310,673	\$ 2,310,673
Special Revenue Fund	\$ 106,346	117,713	224,059
Enterprise Fund	<u>15,564</u>	<u>1,615</u>	<u>17,179</u>
	<u>\$ 121,910</u>	<u>\$ 2,430,001</u>	<u>\$ 2,551,911</u>

NOTE 5. OTHER

TPAF Social Security contributions represent the amount reimbursed by the State for the employers' share of social security contributions for TPAF members for the fiscal year ended June 30, 2024.

PRINCETON CHARTER SCHOOL
SCHEDULE OF FINDINGS AND QUESTIONED COSTS
FOR THE FISCAL YEAR ENDED JUNE 30, 2024

Section I - Summary of Auditors' Results**Financial Statements**

Type of auditors' report issued on whether the financial statements audited were prepared in accordance with GAAP.

Unmodified

Internal control over financial reporting:

1.) Material weakness identified?	<u> </u>	Yes	<u> X </u>	No
2.) Significant deficiencies identified?	<u> </u>	Yes	<u> X </u>	None reported
Noncompliance material to basic financial statements noted?	<u> </u>	Yes	<u> X </u>	No

Federal Awards

The Charter School was not subject to the single audit provisions of the Uniform Guidance for the fiscal year ended June 30, 2024 as federal grant expenditures were less than the single audit threshold of \$750,000 identified in the Uniform Guidance.

State Awards

Type of auditor's report issued on compliance for major programs:

Unmodified

Internal control over major programs:

1.) Material weakness identified?	<u> </u>	Yes	<u> X </u>	No
2.) Significant deficiencies identified?	<u> </u>	Yes	<u> X </u>	None reported
Noncompliance material to basic financial statements noted?	<u> </u>	Yes	<u> X </u>	No

Any audit findings disclosed that are required to be reported in accordance with New Jersey's OMB Circular 15-08?

 Yes X No

Identification of major programs:

Program Name or Cluster	State Grant No.	Grant Period		Award Amount	Budgetary Expenditures
		Start	End		
State Aid Public:					
Equalization Aid	24-495-034-5120-078	7/1/23	6/30/24	\$ 374,926	\$ 374,926
Special Education Aid	24-495-034-5120-089	7/1/23	6/30/24	158,672	158,672
Categorical Security Aid	24-495-034-5120-084	7/1/23	6/30/24	41,477	41,477
Dollar threshold used to distinguish between Type A and B programs				<u>\$ 750,000</u>	
Auditee qualified as low-risk auditee?			Yes	X	No

Section II - Financial Statement Findings - N/A**Section III - Federal Awards and State Financial Assistance Findings and Questioned Costs - N/A**

PRINCETON CHARTER SCHOOL
SUMMARY SCHEDULE OF PRIOR AUDIT FINDINGS
FOR THE FISCAL YEAR ENDED JUNE 30, 2024

Status of Prior Year Findings:

There were no prior year audit findings.