

**TEANECK COMMUNITY CHARTER SCHOOL
TEANECK, NEW JERSEY**

ANNUAL COMPREHENSIVE FINANCIAL REPORT

FOR THE FISCAL YEAR ENDED JUNE 30, 2024

TEANECK COMMUNITY CHARTER SCHOOL
ANNUAL COMPREHENSIVE FINANCIAL REPORT
FOR THE FISCAL YEAR ENDED JUNE 30, 2024

STATE BOARD OF EDUCATION

KATHY A. GOLDENBERG..... President	Burlington
NEDD JAMES JOHNSON, Ed. D..... Vice President	Salem
ARCELIO APONTE.....	Middlesex
MARY G. BENNETT.....	Essex
MARY BETH BERRY.....	Hunterdon
ELAINE BOBROVE.....	Camden
RONALD K. BUTCHER.....	Gloucester
JACK FORNARO.....	Warren
CLAUDINE KEENAN, Ed. D.....	Atlantic
JEANETTE PEÑA.....	Hudson
JOSEPH RICCA, JR., Ed. D.....	Morris
AHMED SHEHATA.....	Union

TEANECK COMMUNITY CHARTER SCHOOL
ANNUAL COMPREHENSIVE FINANCIAL REPORT
FOR THE FISCAL YEAR ENDED JUNE 30, 2024
TABLE OF CONTENTS

<u>Ref.</u>		<u>Page</u>
	Introductory Section	
	Letter of Transmittal.....	1
	Organizational Chart.....	4
	Roster of Officials.....	5
	Consultants and Advisors.....	6
	Financial Section	
	Independent Auditor's Report.....	8
	Required Supplementary Information - Part I	
	Management's Discussion and Analysis.....	13
	Basic Financial Statements	
	Section A - Charter School - Wide Financial Statements	
A-1	Statement of Net Position.....	22
A-2	Statement of Activities.....	23
	Section B - Fund Financial Statements	
	Governmental Funds	
B-1	Balance Sheet.....	26
B-2	Statement of Revenues, Expenditures, and Changes in Fund Balance.....	27
B-3	Reconciliation of the Statements of Revenues, Expenditures, and Changes in Fund Balances of Governmental Funds to the Statement of Activities.....	28
	Proprietary Funds	
B-4	Combining Statement of Fund Net Position.....	30
B-5	Combining Statement of Revenues, Expenses, and Changes in Net Position.....	31
B-6	Combining Statement of Cash Flows.....	32
	Fiduciary Funds	
B-7	Statement of Fiduciary Net Position.....	34
	Notes to the Financial Statements	
	Note 1: Summary of Significant Accounting Policies.....	35
	Note 2: Cash and Cash Equivalents.....	47
	Note 3: Receivables.....	50
	Note 4: Interfund Transfers and Balances.....	50
	Note 5: Capital Assets.....	51
	Note 6: Rental Lease.....	52
	Note 7: Long-Term Debt.....	53
	Note 8: Pension Plans.....	54
	Note 9: State Post-Retirement Medical Benefits.....	64
	Note 10: Post-Employment Benefits Other than Pensions (OPEB).....	65
	Note 11: Compensated Absences.....	70
	Note 12: Fund Balance Appropriated.....	71
	Note 13: Risk Management.....	71
	Note 14: Subsequent Events.....	71

TEANECK COMMUNITY CHARTER SCHOOL
ANNUAL COMPREHENSIVE FINANCIAL REPORT
FOR THE FISCAL YEAR ENDED JUNE 30, 2024
TABLE OF CONTENTS

<u>Ref.</u>		<u>Page</u>
	Required Supplementary Information - Part II	
	Section C - Budgetary Comparison Schedules	
C-1	Budgetary Comparison Schedule - General Fund.....	74
C-2	Budgetary Comparison Schedule - Special Revenue Fund.....	77
	Notes to the Required Supplementary Information	
C-3	Budget Comparison Schedule - Note to RSI.....	79
	Required Supplementary Information - Part III	
	Schedule L - Schedules Related to Accounting and Reporting for Pensions (GASB 68)	
L-1	Schedule of the Charter School's Proportionate Share of the Net Pension Liability - PERS.....	82
L-2	Schedule of the Charter School Contributions - PERS.....	83
L-3	Schedule of the Charter School's Proportionate Share of the Net Pension Liability - TPAF.....	84
	Notes to Required Supplementary Information - Part II	86
	Other Supplementary Information	
	Section E - Special Revenue Fund	
E-1	Combining Schedule of Program Revenues and Expenditures - Budgetary Basis.....	89
E-2	Schedule of Preschool Education Aid - Budgetary Basis.....	N/A
	Section F - Capital Projects Fund	
F-1	Summary Schedule of Project Expenditures.....	N/A
F-2	Summary Schedule Revenues, Expenditures and Changes in Fund Balance - Budgetary Basis.....	N/A
	Section G - Proprietary Funds	
G-1	Combining Schedule of Net Position.....	N/A
G-2	Combining Schedule of Revenues, Expenses and Changes in Fund Net Position.....	N/A
G-3	Combining Schedule of Cash Flows.....	N/A
	Section H - Fiduciary Activities	
H-1	Combining Statement of Fiduciary Net Position.....	N/A
H-2	Statement of Changes in Fiduciary Net Position.....	N/A
H-3	Student Activity Schedule of Receipts and Disbursements.....	N/A
H-4	Payroll Agency Fund Schedule of Receipts and Disbursements.....	N/A

TEANECK COMMUNITY CHARTER SCHOOL
ANNUAL COMPREHENSIVE FINANCIAL REPORT
FOR THE FISCAL YEAR ENDED JUNE 30, 2024
TABLE OF CONTENTS

<u>Ref.</u>		<u>Page</u>
	Statistical Section (Unaudited)	
	Introduction to the Statistical Section.....	93
	Financial Trends	
J-1	Net Position by Component.....	95
J-2	Changes in Net Position.....	96
J-3	Fund Balances - Governmental Funds.....	97
J-4	Changes in Fund Balances - Governmental Funds.....	98
J-5	General Fund Other Local Revenue by Source.....	99
	Revenue Capacity	
J-6	Assessed Value and Estimated Actual Value of Taxable Property.....	N/A
J-7	Direct and Overlapping Property Tax Rates.....	N/A
J-8	Principal Property Taxpayers.....	N/A
J-9	Property Tax Levies and Collections.....	N/A
	Debt Capacity	
J-10	Ratios of Outstanding Debt by Type.....	N/A
J-11	Ratios of General Bonded Debt Outstanding.....	N/A
J-12	Direct and Overlapping Governmental Activities Debt.....	N/A
J-13	Legal Debt Margin Information.....	N/A
	Demographic and Economic Information	
J-14	Demographic and Economic Statistics.....	N/A
J-15	Principal Employers.....	N/A
	Operating Information	
J-16	Full-Time Equivalent Charter School Employees by Function/Program.....	101
J-17	Operating Statistics.....	102
J-18	School Building Information.....	N/A
J-19	Schedule of Required Maintenance Expenditures by School Facility.....	N/A
J-20	Insurance Schedule.....	103
	Performance Framework	
J-21	Charter School Performance Framework, Financial Performance, Fiscal Ratios.....	104

TEANECK COMMUNITY CHARTER SCHOOL
ANNUAL COMPREHENSIVE FINANCIAL REPORT
FOR THE FISCAL YEAR ENDED JUNE 30, 2024
TABLE OF CONTENTS

<u>Ref.</u>		<u>Page</u>
	Single Audit Section	
K-1	Independent Auditor's Report on Internal Control Over Financial Reporting and On Compliance and Other Matters Based On an Audit of Financial Statements Performed In Accordance With Government Auditing Standards	106
K-2	Independent Auditor's Report on Compliance For Each Major State Program; Report on Internal Control Over Compliance; And Report on Schedule of Expenditures of State Finance required by OMB New Jersey OMB Circular 04-04	108
K-3	Schedule of Expenditures of Federal Awards - Schedule A.....	111
K-4	Schedule of Expenditures of State Financial Assistance - Schedule B.....	112
K-5	Notes to Schedules of Expenditures of Federal Awards and State Financial Assistance.....	113
K-6	Schedule of Findings and Questioned Costs.....	116
K-7	Summary Schedule of Prior Audit Findings and Questioned Costs as Prepared by Management.....	121

INTRODUCTORY SECTION



TEANECK COMMUNITY CHARTER SCHOOL

Honorable President and
Members of the Board of Trustees
Teaneck Community Charter School
County of Bergen, New Jersey

Dear Board Members:

The Annual Comprehensive Financial Report of the Teaneck Community Charter School for the fiscal year ended June 30, 2024, is hereby submitted. Responsibility for both the accuracy of the data and completeness and fairness of the presentation, including all disclosures, rests with the management of the Board of Education (Board). To the best of our knowledge and belief, the data presented in this report is accurate in all material respects and is reported in a manner designed to present fairly the financial position and results of operations of the various funds and account groups of the District. All disclosures necessary to enable the reader to gain an understanding of the District's financial activities have been included.

The Annual Comprehensive Financial Report is presented in four sections; introductory, financial, statistical and single audit. The introductory section includes this transmittal letter, the District's organizational chart and a list of principal officials. The financial section includes the general-purpose financial statements and schedules, as well as the auditors' report thereon. The statistical section includes selected financial and demographic information, generally presented on a multi-year basis. The District is required to undergo an annual single audit in conformity with the provisions of the New Jersey Circular 15-08- OMB, Single Audit Policy for Recipients of Federal Grants, State Grants and State Aid, and are not a required part of the general-purpose financial statements. Information related to this single audit, including the auditors' report on the internal control structure and compliance with applicable laws, regulations, findings and recommendations, are included in the single audit section of this report.

1.) REPORTING ENTITY AND ITS SERVICES: The Teaneck Community Charter School is an independent reporting entity within the criteria adopted by the GASB as established by NCGA ST. No. 3. All funds and account groups of the District are included in this report. The Teaneck Community Charter School constitutes the school's entire reporting entity. The school provides a full range of educational services appropriate to grade levels K through 8. These include regular and vocational, as well as special education students.

2.) MAJOR INITIATIVES: Teaneck Community Charter School plans to deliver learning along three broad themes: Student-centered learning: teaching children in accordance with their development and interests, rather than age groupings; Expeditionary learning beyond the school walls: learning that takes place through extended classroom experiences: hands-on projects and community service; and nurturing of diverse populations: promoting academic and personal growth through cooperation, compassion and enthusiasm for fellow students and members of the community. Partnerships with community-based organizations are planned to help the school provide students with access to mentors, career education, support and experiential "extended classroom" activities.

3.) **INTERNAL ACCOUNTING CONTROLS:** Management of the school is responsible for establishing and maintaining an internal control structure designed to ensure that the assets of the school are protected from loss, theft or misuse and to ensure that adequate accounting data is compiled to allow for the preparation of financial statements in conformity with generally accepted accounting principles (GAAP). The internal control structure is designed to provide reasonable, but not absolute assurance that these objectives are met. The concept of reasonable assurance recognizes that: (1) the cost of a control should not exceed the benefits likely to be derived; and (2) the valuation of costs and benefits requires estimates and judgements by management.

As a recipient of federal and state financial assistance, the school also is responsible for ensuring that an adequate internal control structure is in place to ensure compliance with applicable laws and regulations related to those programs. This internal control structure is also subject to periodic evaluation by the District management.

As part of the school's single audit described earlier, tests are made to determine the adequacy of the internal control structure, including that portion related to federal and state financial assistance programs, as well as to determine that the school has complied with applicable laws and regulations.

4.) **BUDGETARY CONTROLS:** In addition to internal accounting controls, the school maintains budgetary controls. The objective of these budgetary controls is to ensure compliance with legal provisions embodied in the annual appropriated budget approved by the Board. Annual appropriated budgets are adopted for the general fund, the special revenue fund, and the debt service fund. Project-length budgets are approved for the capital improvements accounted for in the capital projects fund. The final budget amount as amended for the fiscal year is reflected in the financial section.

An encumbrance accounting system is used to record outstanding purchase commitments on a line item basis. Open encumbrances at year-end are either cancelled or are included as re-appropriations of fund balance in the subsequent year. Those amounts to be re-appropriated are reported as reserves of fund balance at June 30, 2024.

5.) **ACCOUNTING SYSTEMS AND REPORTS:** The school's accounting records reflect generally accepted accounting principles, as promulgated by the Governmental Accounting Standards Board (GASB). The accounting system of the District is organized on the basis of funds and account groups. These funds and account groups are explained in "Notes to the Basic Financial Statements".

6.) **FINANCIAL INFORMATION AT FISCAL YEAR-END:** As demonstrated by the various statements and schedules included in the financial section of this report, the District continues to meet its responsibility for sound financial management.

7.) **CASH MANAGEMENT:** The investment policy of the school is guided in large part by state statute as detailed in "Notes to the Financial Statements", Note 4. The school has adopted a cash management plan which requires it to deposit public funds in public depositories protected from loss under the provisions of the Governmental Unit Deposit Protection Act (GUDPA). GUDPA was enacted in 1970 to protect Governmental Units for a loss of funds on deposit with a failed banking institution in New Jersey. The law requires governmental units to deposit public funds only in public depositories located in New Jersey, where the funds are secured in accordance with the Act.

8.) **RISK MANAGEMENT:** The Board carries various forms of insurance, including but not limited to general liability, automobile liability and comprehensive/collision, hazard and theft insurance on property and contents, and fidelity bonds.

9.) OTHER INFORMATION: Independent Audit - State statutes require an annual audit by independent certified public accountants or registered municipal accountants. In addition to meeting the requirements set forth in state statutes, the audit also was designed to meet the requirements of the State Treasury Circular 15-08-OMB. The auditors' report on the general purpose financial statements and combining and individual fund statements and schedules is included in the financial section of this report. The auditor's reports related specifically to the single audit are included in the single audit section of this report.

10.) ACKNOWLEDGMENTS: We would like to express our appreciation to the members of the Teaneck Community Charter School for their concern in providing fiscal accountability to the citizens and taxpayers of the school district and thereby contributing their full support to the development and maintenance of our financial operation. The preparation of this report could not have been accomplished without the efficient and dedicated services of the financial and accounting staff.

Respectfully submitted,

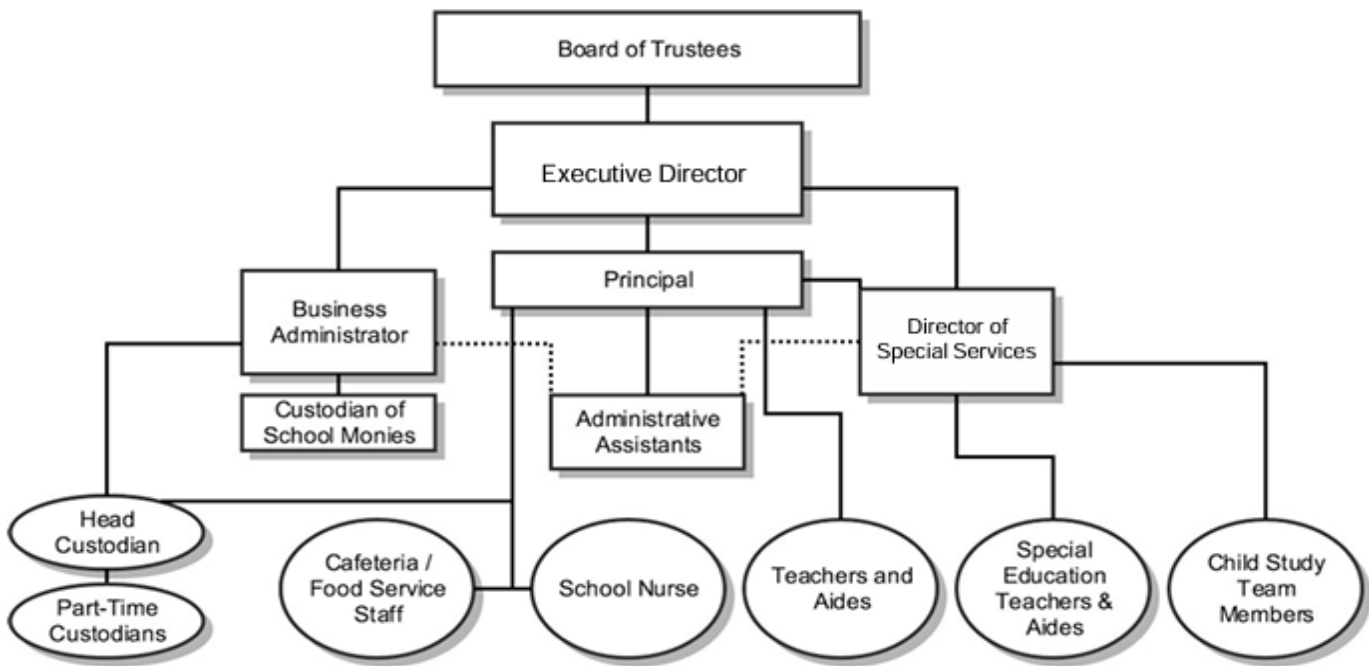
Ralph Gallow

Lead Person / Director

Thomas Jazwinski

School Business Administrator

TEANECK COMMUNITY CHARTER SCHOOL ORGANIZATIONAL CHART



TEANECK COMMUNITY CHARTER SCHOOL
ANNUAL COMPREHENSIVE FINANCIAL REPORT
FOR THE FISCAL YEAR ENDED JUNE 30, 2024

ROSTER OF OFFICIALS
June 30, 2024

<u>Members of the Board of Trustees</u>	<u>Term Expires</u>
Stacy Beharry	06/30/26
Keisha Carter	06/30/27
Yvette Gonzalez	06/30/26
Heather Goodrich	06/30/25
Xiomara Hadnot	06/30/26
Natalie Lazu	06/30/25
Anthony McGilchrist	06/30/27
Kirk Mitchell	06/30/24
Enid Vallejo-Juste	06/30/25

TEANECK COMMUNITY CHARTER SCHOOL
ANNUAL COMPREHENSIVE FINANCIAL REPORT
FOR THE FISCAL YEAR ENDED JUNE 30, 2024

Audit Firm

Di Maria & Associates LLP
Accountants and Advisors
245 Union Street, 1st Floor
Lodi, New Jersey 07644

Attorney

Johnston Law Firm, LLC
75 Midland Avenue
Montclair, New Jersey 07042

Official Depository

Lakeland Bank
250 Oak Ridge Road
Oakridge, New Jersey 07436

FINANCIAL SECTION

Independent Auditor's Report

Honorable President
Members of the Board of Trustees
Teaneck Community Charter School
County of Bergen, New Jersey

Report on the Audit of the Financial Statements

Opinions

We have audited the accompanying financial statements of the governmental activities, the business-type activities, each major fund, and the aggregate remaining fund information of Teaneck Community Charter School in the County of Bergen, State of New Jersey, as of and for the year ended June 30, 2024, and the related notes to the financial statements, which collectively comprise the Charter School's basic financial statements as listed in the table of contents.

In our opinion, the financial statements referred to above, present fairly in all material respects, the respective financial position of the governmental activities, the business-type activities, each major fund, and the aggregate remaining fund information of Teaneck Community Charter School in the County of Bergen, State of New Jersey as of June 30, 2024 and the respective changes in financial position and, where applicable, cash flows thereof for the year then ended in accordance with accounting principles generally accepted in the United States of America.

Basis for Opinions

We conducted our audit in accordance with auditing standards generally accepted in the United States of America and the standards applicable to financial audits contained in Government Auditing Standards, issued by the Comptroller General of the United States. Our responsibilities under those standards are further described in the Auditor's Responsibilities for the Audit of the Financial Statements section of our report. We are required to be independent of Teaneck Community Charter School and to meet our other ethical responsibilities, in accordance with the relevant ethical requirements relating to our audit. We believe that the audit evidence we have obtained is sufficient and appropriate to provide a basis for our audit opinions.

Responsibilities of Management for the Financial Statements

Management is responsible for the preparation and fair presentation of these financial statements in accordance with accounting principles generally accepted in the United States of America, and for the design, implementation, and maintenance of internal control relevant to the preparation and fair presentation of financial statements that are free from material misstatement, whether due to fraud or

In preparing the financial statements, management is required to evaluate whether there are conditions or events, considered in the aggregate, that raise substantial doubt about Teaneck Community Charter School's ability to continue as a going concern for twelve months beyond the financial statement date, including any currently known information that may raise substantial doubt shortly thereafter.

Auditor's Responsibilities for the Audit of the Financial Statements

Our objectives are to obtain reasonable assurance about whether the financial statements as a whole are free from material misstatement, whether due to fraud or error, and to issue an auditor's report that includes our opinions. Reasonable assurance is a high level of assurance but is not absolute assurance and therefore is not a guarantee that an audit conducted in accordance with generally accepted auditing standards and Government Auditing Standards will always detect a material misstatement when it exists. The risk of not detecting a material misstatement resulting from fraud is higher than for one resulting from error, as fraud may involve collusion, forgery, intentional omissions, misrepresentations, or the override of internal control. Misstatements are considered material if there is a substantial likelihood that, individually or in the aggregate, they would influence the judgment made by a reasonable user based on the financial statements.

In performing an audit in accordance with generally accepted auditing standards and Government Auditing Standards, we:

- Exercise professional judgment and maintain professional skepticism throughout the audit.
- Identify and assess the risks of material misstatement of the financial statements, whether due to fraud or error, and design and perform audit procedures responsive to those risks. Such procedures include examining, on a test basis, evidence regarding the amounts and disclosures in the financial statements.
- Obtain an understanding of internal control relevant to the audit in order to design audit procedures that are appropriate in the circumstances, but not for the purpose of expressing an opinion on the effectiveness of Teaneck Community Charter School's internal control. Accordingly, no such opinion is expressed.
- Evaluate the appropriateness of accounting policies used and the reasonableness of significant accounting estimates made by management, as well as evaluate the overall presentation of the financial statements.
- Conclude whether, in our judgment, there are conditions or events, considered in the aggregate, that raise substantial doubt about Teaneck Community Charter School's ability to continue as a going concern for a reasonable period of time.

We are required to communicate with those charged with governance regarding, among other matters, the planned scope and timing of the audit, significant audit findings, and certain internal control-related matters that we identified during the audit.

Required Supplementary Information

Accounting principles generally accepted in the United States of America require that the management's discussion and analysis, budgetary comparison information, the schedules related to accounting and reporting for pensions and the schedules related to accounting and reporting for postemployment benefits other than pensions, be presented to supplement the basic financial statements. Such information is the responsibility of management and, although not a part of the basic financial statements, is required by the Governmental Accounting Standards Board who considers it to be an essential part of financial reporting for placing the basic financial statements in an appropriate operational, economic, or historical context. We have applied certain limited procedures to the required supplementary information in accordance with auditing standards generally accepted in the United States of America, which consisted of inquiries of management about the methods of preparing the information and comparing the information for consistency with management's responses to our inquiries, the basic financial statements, and other knowledge we obtained during our audit of the basic financial statements. We do not express an opinion or provide any assurance on the information because the limited procedures do not provide us with sufficient evidence to express an opinion or provide any assurance.

Supplementary Information

Our audit was conducted for the purpose of forming opinions on the financial statements that collectively comprise of Teaneck Community Charter School's basic financial statements. The accompanying combining and individual nonmajor fund financial statements and schedule of expenditures of federal awards, as required by Title 2 U.S. Code of Federal Regulations Part 200, Uniform Administrative Requirements, Cost Principles, and Audit Requirements for Federal Awards, are presented for purposes of additional analysis and are not a required part of the basic financial statements. Such information is the responsibility of management and was derived from and relates directly to the underlying accounting and other records used to prepare the basic financial statements. The information has been subjected to the auditing procedures applied in the audit of the basic financial statements and certain additional procedures, including comparing and reconciling such information directly to the underlying accounting and other records used to prepare the basic financial statements or to the basic financial statements themselves, and other additional procedures in accordance with auditing standards generally accepted in the United States of America. In our opinion, the combining and individual nonmajor fund financial statements and the schedule of expenditures of federal awards are fairly stated, in all material respects, in relation to the basic financial statements as a whole.

Other Information

Management is responsible for the other information included in the annual report. The other information comprises the introductory and statistical sections but does not include the basic financial statements and our auditor's report thereon. Our opinions on the basic financial statements do not cover the other information, and we do not express an opinion or any form of assurance thereon.

In connection with our audit of the basic financial statements, our responsibility is to read the other information and consider whether a material inconsistency exists between the other information and the basic financial statements, or the other information otherwise appears to be materially misstated. If, based on the work performed, we conclude that an uncorrected material misstatement of the other information exists, we are required to describe it in our report.

Other Reporting Required by Government Auditing Standards

In accordance with Government Auditing Standards, we have also issued our report dated October 12, 2024 on our consideration of Teaneck Community Charter School's internal control over financial reporting and on our tests of its compliance with certain provisions of laws, regulations, contracts, and grant agreements and other matters. The purpose of that report is solely to describe the scope of our testing of internal control over financial reporting and compliance and the results of that testing, and not to provide an opinion on the effectiveness of the Teaneck Community Charter School internal control over financial reporting or on compliance. That report is an integral part of an audit performed in accordance with Government Auditing Standards in considering Teaneck Community Charter School's internal control over financial reporting and compliance.

Di Maria & Associates LLP
Accountants and Advisors

Frank Di Maria

Frank Di Maria
Public School Accountant
PSA No. 20CS00116800

November 30, 2024

REQUIRED SUPPLEMENTARY INFORMATION - PART I

TEANECK COMMUNITY CHARTER SCHOOL
MANAGEMENT'S DISCUSSION AND ANALYSIS
FOR THE FISCAL YEAR ENDED JUNE 30, 2024
UNAUDITED

The discussion and analysis of Teaneck Community Charter School's financial performance provides an overall review of the Charter School's financial activities for the fiscal year ended June 30, 2024. The intent of this discussion and analysis is to look at the Charter School's financial performance as a whole; readers should also review the basic financial statements and notes to enhance their understanding of the Charter School's financial performance. Certain comparative information between the current year (2023 to 2024) and the prior year (2022 to 2023) is required to be presented in the MD & A.

Financial Highlights

Key financial highlights for 2024 are as follows:

General revenues accounted for \$9,487,723 in revenue or 91% percent of all revenues. Program specific revenues in the form of charges for services and operating grants and contributions accounted for \$369,014 or 8% percent of total revenues of \$9,856,737.

The Charter School had \$9,091,388 in expenses; only \$369,014 of these expenses were offset by program specific charges for services, grants or contributions. General revenues of \$9,487,723 were adequate to provide for these programs.

Among governmental funds, the General Fund had \$8,966,743 in revenues and \$8,609,282 in expenditures. The General Fund's fund balance increased \$357,461 from 2023. This increase was anticipated by the Board of Trustees.

Using this Annual Comprehensive Financial Report (ACFR)

This annual report consists of a series of financial statements and notes to those statements. These statements are organized so the reader can understand Teaneck Community Charter School as a financial whole, an entire operating entity. The statements then proceed to provide an increasingly detailed look at specific financial activities.

The Statement of Net Position and Statement of Activities provide information about the activities of the whole Charter School, presenting both an aggregate view of the Charter School's finances and a longer-term view of those finances. Fund financial statements provide the next level of detail. For governmental funds, these statements tell how services were financed in the short term as well as what remains for future spending. The fund financial statements also look at the Charter School's most significant funds with all other non-major funds presented in total in one column. In the case of Teaneck Community Charter School, the General Fund is by far the most significant fund.

Reporting the Charter School as a Whole

Statement of Net Position and the Statement of Activities

While this document contains the large number of funds used by the Charter School to provide programs and activities, the view of the Charter School as a whole looks at all financial transactions and ask the question, "How did we do financially during 2024?" The Statement of Net Position and the Statement of Activities answer this question. These statements include all assets and liabilities using the accrual basis of accounting similar to the accounting used by most private-sector businesses. This basis of accounting takes into account all of the current year's revenues and expenses regardless of when cash is received or paid.

Statement of Net Position and the Statement of Activities

These two statements report the Charter School's net position and changes in that position. This change in net position is important because it tells the reader that, for the Charter School as a whole, the financial position of the Charter School have improved or diminished. The causes of this change may be the result of many factors, some financial and some not. Non- financial factors include current laws in New Jersey restricting revenue growth, facility condition, required educational programs and other factors.

In the Statement of Net Position and the Statement of Activities, the Charter School is divided into two kinds of activities:

Governmental Activities — All of the Charter School's programs and services are reported here including instruction, administration, support services and capital outlay.

Business-Type Activities — These services are provided on a charge for goods or services basis to recover all the expenses of the goods or services provided. The Food Service and the after school enterprise funds are reported as a business activity.

Reporting the Charter School's Most Significant Funds

Fund Financial Statements

Fund financial reports provide detailed information about the Charter School's funds. The Charter School uses many funds to account for a multitude of financial transactions. The Charter School's governmental funds are the General Fund and Special Revenue Fund.

Governmental Funds

The Charter School's activities are reported in governmental funds, which focus on how money flows into and out of those funds and the balances left at year-end available for spending in the future years. These funds are reported using an accounting method called modified accrual accounting, which measures cash and all other financial assets that can readily be converted to cash. The governmental fund statements provide a detailed short-term view of the Charter School's general government operations and the basic services it provides. Governmental fund information helps the reader determine whether there are more or fewer financial resources that can be spent in the near future to finance educational programs. The relationship (or differences) between governmental activities (reported in the Statement of Net Position and the Statement of Activities) and governmental funds are reconciled in the financial statements.

Enterprise Fund

The enterprise fund uses the same basis of accounting as business-type activities; therefore, these statements are essentially the same.

Notes to the Basic Financial Statements

The notes provide additional information that is essential to a full understanding of the data provided in the Charter School-wide and fund financial statements. The notes to the basic financial statements can be found starting on page 35 of this report.

The Charter School as a Whole

Recall that the Statement of Net Position provides the perspective of the Charter School as a whole. Net position may serve over time as a useful indicator of a government's financial position.

The Charter School's financial position is the product of several financial transactions including the net results of activities.

The Charter School's combined net position were \$2,596,571 for 2024 and \$2,200,236 for 2023.

TEANECK COMMUNITY CHARTER SCHOOL
MANAGEMENT'S DISCUSSION AND ANALYSIS
FOR THE FISCAL YEAR ENDED JUNE 30, 2024
UNAUDITED

Governmental Activities

The Charter School's total revenues were \$9,335,757 for 2024 and \$8,807,897 for 2023, this includes \$1,435,319 for 2023 and \$1,435,319 for 2022 of state reimbursed TPAF social security pension contributions and post/retirement benefits.

The total cost of all program and services was \$8,978,296 for 2024 and \$8,921,950 for 2023. Instruction comprises 64% for 2024 and 64% for 2023 of Charter School expenditures.

Business-Type Activities

Revenues for the Charter School's business-type activities (food service and after care) were comprised of charges for services and federal and state reimbursements.

Revenues exceeded expenditures by \$16,536 for 2024 and \$59,254 for 2023.

Charges for services represent \$504,444 for 2024 and \$521,184 for 2023 of revenue. This represents amounts paid by patrons for daily food.

Governmental Activities

The Statement of Activities shows the cost of program services and the charges for services and grants offsetting those services. Instruction expenses include activities directly dealing with the teaching of pupils and the interaction between teacher and student, including extracurricular activities.

Administration includes expenses associated with administrative and financial supervision of the Charter School.

Support services include the activities involved with assisting staff with the content and process of teaching to students, including curriculum and staff development and the costs associated with operating the facility.

Capital Outlay represents instructional and/or non-instructional equipment purchased and is capitalized when such equipment is over the \$2,000 threshold.

The Charter School's Funds

All governmental funds (i.e., general fund and special revenue fund presented in the fund- based statements) are accounted for using the modified accrual basis of accounting. Total revenues amounted to \$9,335,757 for 2024 and \$8,807,897 for 2023 and expenditures were \$8,978,296 for 2024 and \$8,542,867 for 2023. The net change in fund balance was most significant in the general fund, an increase of \$357,461 for 2024 and an increase of \$269,909 for 2023.

TEANECK COMMUNITY CHARTER SCHOOL
MANAGEMENT'S DISCUSSION AND ANALYSIS
FOR THE FISCAL YEAR ENDED JUNE 30, 2024
UNAUDITED

The Charter School's Funds (Continued)

As demonstrated by the various statements and schedules included in the financial section of this report, the Charter School continues to meet its responsibility for sound financial management. The following schedules present a summary of the revenues of the governmental funds for the fiscal year ended June 30, 2024, and the amount and percentage of increases and decreases in relation to prior year revenues.

Revenues	Amount	Percent of Total	Increase/ (Decrease) From 2023	Percent of Increase/ (Decrease)
Local Sources	\$ 6,931,061	74.24%	\$ 320,860	60.79%
State Sources	2,038,182	21.83%	55,537	10.52%
Federal Sources	366,514	3.93%	151,463	28.69%
Total	<u>\$ 9,335,757</u>	<u>100.00%</u>	<u>\$ 527,860</u>	<u>100.00%</u>

The following schedule represents a summary of general fund and special revenue fund expenditures for the fiscal year ended June 30, 2024, and the percentage of decreases and decreases in relation to prior

Revenues	Amount	Percent of Total	Increase/ (Decrease) From 2023	Percent of Increase/ (Decrease)
Instruction	\$ 3,516,747	39.17%	\$ 251,397	57.74%
Administration	3,180,849	35.43%	247,992	56.95%
Support Services	2,148,915	23.93%	(34,706)	-7.97%
Capital Outlay	131,785	1.47%	(29,254)	-6.72%
Total	<u>\$ 8,978,296</u>	<u>100.00%</u>	<u>\$ 435,429</u>	<u>100.00%</u>

General Fund Budgeting Highlights

The Charter School's budget is prepared according to New Jersey law, and is based on accounting for certain transactions on a basis of cash receipts, disbursements, and encumbrances. The most significant budgeted fund is the General Fund.

TEANECK COMMUNITY CHARTER SCHOOL
MANAGEMENT'S DISCUSSION AND ANALYSIS
FOR THE FISCAL YEAR ENDED JUNE 30, 2024
UNAUDITED

Over the course of the year, the Charter School revised the annual operating budget in accordance with state regulations. Revisions in the budget were made to recognize revenues that were not anticipated and to prevent over-expenditures in specific line item accounts.

Capital Assets (Net of Depreciation)

At the end of the fiscal year 2024, the Charter School had \$467,154 invested in net capital assets and \$457,406 for 2023.

For the Future

The Teaneck Community Charter School is in good financial condition presently. The Charter School is proud of its community support. A major concern is the continued enrollment growth of the Charter School with the increased reliance on federal and state funding.

In conclusion, the Teaneck Community Charter School has committed itself to financial excellence for many years. In addition, the Charter School's system for financial planning, budgeting, and internal financial controls are well regarded. The Charter School plans to continue its sound fiscal management to meet the challenge of the future.

Contacting the Charter School's Financial Management

This financial report is designed to provide our citizens, taxpayers, investors, and creditors with a general overview of the Charter School's finances and to show the Charter School's accountability for the money it receives. If you have questions about this report or need additional information, contact the School Business Administrator/Board Secretary at Teaneck Community Charter School, 563 Chestnut Ave, Teaneck, New Jersey 07666.

BASIC FINANCIAL STATEMENTS

SECTION A - CHARTER SCHOOL - WIDE FINANCIAL STATEMENTS

The statement of net position and the statement of activities display information about the Charter School. These statements include the financial activities of the overall Charter School, except for fiduciary activities. Eliminations have been made to minimize the double-counting of internal activities. These statements distinguish between the governmental and business-type activities of the Charter School.

TEANECK COMMUNITY CHARTER SCHOOL
STATEMENT OF NET POSITION
FOR THE FISCAL YEAR ENDED JUNE 30, 2024

	Governmental Activities	Business-Type Activities	Total
<u>ASSETS:</u>			
Cash and Cash Equivalents	\$ 2,235,361	\$ 153,787	\$ 2,389,148
Cash - Escrow	126,836	-	126,836
Interfund Receivable	236,458	-	236,458
Accounts Receivable	11,511	-	11,511
Intergovernmental Receivable	661,214	-	661,214
Prepaid Expenses	68,694	-	68,694
Capital Assets, Net	467,154	-	467,154
Deferred Outflows of Pension Resources	368,472	-	368,472
Total Assets	<u>4,175,700</u>	<u>153,787</u>	<u>4,329,487</u>
<u>LIABILITIES:</u>			
Cash Overdraft	-	19,195	19,195
Accounts Payable	1,824	-	1,824
Deferred Revenue	114,902	23,188	138,090
Due Beyond One Year:			
Net Pension Liability - PERS	1,332,210	-	1,332,210
Long-Term Liabilities	107,950	-	107,950
Deferred Inflows of Pension Resources	133,647	-	133,647
Total Liabilities	<u>1,690,533</u>	<u>42,383</u>	<u>1,732,916</u>
<u>NET POSITION:</u>			
Investment in Capital Assets, Net	467,154	-	467,154
Restricted For:			
Maintenance	50,000	-	50,000
Other Purposes	75,000	-	75,000
Unrestricted, Unassigned	1,893,013	111,404	2,004,417
Total Net Position	<u>\$ 2,485,167</u>	<u>\$ 111,404</u>	<u>\$ 2,596,571</u>
	-	-	-

TEANECK COMMUNITY CHARTER SCHOOL
STATEMENT OF ACTIVITIES
FOR THE FISCAL YEAR ENDED JUNE 30, 2024

A-2

Functions / Programs	Expenses	Indirect Expenses Allocation	Program Revenues			Net (Expense) Revenue and Changes in Net Position		
			Charges for Services	Operating Grants and Contributions	Capital Grants and Contributions	Governmental Activities	Business - Type Activities	Total
GOVERNMENT ACTIVITIES:								
Instruction	\$ (3,517,920)	\$ -	\$ -	\$ 224,387	\$ -	\$ (3,293,533)	-	(3,293,533)
Administration	(3,180,849)	62,559	-	-	-	(3,118,290)	-	(3,118,290)
Support Services	(2,148,915)	-	-	142,627	-	(2,006,288)	-	(2,006,288)
Capital Outlay	(131,785)	(9,748)	-	2,000	-	(139,533)	-	(139,533)
Total Governmental Activities	<u>(8,979,469)</u>	<u>52,811</u>	<u>-</u>	<u>369,014</u>	<u>-</u>	<u>(8,557,644)</u>	<u>-</u>	<u>(8,557,644)</u>
BUSINESS-TYPE ACTIVITIES:								
Total Business-Type Activities	<u>(504,444)</u>	<u>(29,300)</u>	<u>520,792</u>	<u>-</u>	<u>-</u>	<u>-</u>	<u>(12,952)</u>	<u>(12,952)</u>
Total Primary Government	<u>(9,483,913)</u>	<u>23,511</u>	<u>520,792</u>	<u>369,014</u>	<u>-</u>	<u>(8,557,644)</u>	<u>(12,952)</u>	<u>(8,570,596)</u>
GENERAL REVENUES								
General Purposes	\$ 6,827,427	\$ -	\$ 6,827,427					
Federal and State Aid Not Restricted	2,035,682	-	2,035,682					
Investment Earnings	172	188	360					
Miscellaneous Revenue	103,462	-	103,462					
Total General Revenues	<u>8,966,743</u>	<u>188</u>	<u>8,966,931</u>					
Change in Net Position	<u>409,099</u>	<u>(12,764)</u>	<u>396,335</u>					
Net Position - Beginning of Year	<u>2,076,068</u>	<u>124,168</u>	<u>2,200,236</u>					
Net Position - Ending	<u>\$ 2,485,167</u>	<u>\$ 111,404</u>	<u>\$ 2,596,571</u>					

SECTION B - FUND FINANCIAL STATEMENTS

The individual Fund statements and schedules present more detailed information for the individual fund in a format that segregates information by fund type.

GOVERNMENTAL FUNDS

TEANECK COMMUNITY CHARTER SCHOOL
GOVERNMENTAL FUND
BALANCE SHEET
AS OF JUNE 30, 2024

	General Fund	Special Revenue Fund	Total
<u>ASSETS:</u>			
Cash and Cash Equivalents	\$ 2,122,783	\$ 112,578	\$ 2,235,361
Cash - Escrow	126,836	-	126,836
Interfund Receivable	234,634	1,824	236,458
Accounts Receivable	11,011	500	11,511
Intergovernmental Receivable	661,214	-	661,214
Prepaid Expenses	68,694	-	68,694
Total Assets	<u>\$ 3,225,172</u>	<u>\$ 114,902</u>	<u>\$ 3,340,074</u>
<u>LIABILITIES AND FUND BALANCES:</u>			
Liabilities:			
Accounts Payable	\$ 1,824	\$ -	\$ 1,824
Deferred Revenue	-	114,902	114,902
Total Liabilities	<u>1,824</u>	<u>114,902</u>	<u>116,726</u>
Fund Balances:			
Restricted:			
Maintenance	50,000	-	50,000
Other Purposes	75,000	-	75,000
Unassigned:			
General Fund	<u>3,098,348</u>	<u>-</u>	<u>3,098,348</u>
Total Fund Balances	<u>3,223,348</u>	<u>-</u>	<u>3,223,348</u>
Total Liabilities and Fund Balances	<u>\$ 3,225,172</u>	<u>\$ 114,902</u>	<u>-</u>

Amounts reported for governmental activities in the statement of net position (A-1) are different because:

Capital assets used in governmental activities are not financial resources and therefore are not reported in governmental funds.	467,154
The cost of the assets is \$1,934,259 and the accumulated depreciation is \$1,467,105.	
Net pension liability of \$1,332,210 deferred inflows of resources of \$133,647 less deferred outflows of resources of \$368,472 related to pensions are not reported in the governmental funds	(1,097,385)
Long-Term Liabilities are not due and payable in the current period and therefore are not reported as liabilities in the fund	(107,950)
Net Position of Governmental Activities	<u>\$ 2,485,167</u>

TEANECK COMMUNITY CHARTER SCHOOL
GOVERNMENTAL FUND
STATEMENT OF REVENUES, EXPENDITURES, AND CHANGES IN FUND BALANCE
FOR THE FISCAL YEAR ENDED JUNE 30, 2024

	General Fund	Special Revenue Fund	Total
REVENUES:			
Local Sources:			
Equalization Aid	\$ 6,827,427	\$ -	\$ 6,827,427
Miscellaneous	101,134	2,500	103,634
Total Local Sources	6,928,561	2,500	6,931,061
State Sources	2,038,182	-	2,038,182
Federal Sources	-	366,514	366,514
Total Revenues	8,966,743	369,014	9,335,757
EXPENDITURES:			
Current Expense:			
Instruction	3,292,360	225,560	3,517,920
Administration	3,180,849	-	3,180,849
Support Services	2,006,288	142,627	2,148,915
Capital Outlay	129,785	2,000	131,785
Total Expenditures	8,609,282	370,187	8,979,469
NET CHANGE IN FUND BALANCE	357,461	(1,173)	356,288
FUND BALANCE, JULY 1	2,740,887	1,173	2,742,060
FUND BALANCE, JUNE 30	\$ 3,098,348	\$ -	\$ 3,098,348

TEANECK COMMUNITY CHARTER SCHOOL

GOVERNMENT FUND

RECONCILIATION OF THE STATEMENT OF REVENUES, EXPENDITURES AND CHANGES IN
 FUND BALANCES OF GOVERNMENTAL FUNDS TO THE STATEMENT OF ACTIVITIES
 FOR THE FISCAL YEAR ENDED JUNE 30, 2024

Total net change in fund balances - governmental fund (from B-2)	\$	357,461
Amounts reported for governmental activities in the statement of		
A decrease of compensated absences is not an expenditure in the governmental funds, but the increase does increase long-term liabilities in the statement of net assets and is reported in the statement of activities.		
		11,341
Capital outlays are reported in governmental funds as		
Depreciation Expense	120,037	
Capital Outlays	<u>(129,785)</u>	
		(9,748)
Pension costs associated with the PERS pension plan are reported in the governmental funds as expenditures in the year the school pension contribution is paid. However, on the statement of activities, the net difference between the current and prior year net pension liability is recognized		
		<u>50,045</u>
Change in net position of government activities	\$	<u><u>409,099</u></u>
		-

PROPRIETARY FUNDS

TEANECK COMMUNITY CHARTER SCHOOL
 PROPRIETARY FUNDS
 COMBINING STATEMENT OF FUND NET POSITION
 FOR THE FISCAL YEAR ENDED JUNE 30, 2024

	Business-Type Activities Enterprise Funds		
	School Nutrition	After School Program	Total
<u>ASSETS:</u>			
Current Assets:			
Cash	\$ -	\$ 153,787	\$ 153,787
<u>LIABILITIES AND NET POSITION:</u>			
Liabilities:			
Cash Overdraft	\$ 19,195	\$ -	\$ 19,195
Deferred Revenue	-	23,188	23,188
Total Liabilities	19,195	23,188	42,383
<u>NET POSITION:</u>			
Unassigned	(19,195)	130,599	111,404
Total Net Position	(19,195)	130,599	111,404
Total Liabilities and Net Position	\$ -	\$ 153,787	\$ 153,787

TEANECK COMMUNITY CHARTER SCHOOL
 PROPRIETARY FUNDS
 COMBINING STATEMENT OF REVENUES, EXPENSES, AND CHANGES IN NET POSITION
 FOR THE FISCAL YEAR ENDED JUNE 30, 2024

	Business-Type Activities Enterprise Funds		
	Food Service	After School Program	Total
<u>OPERATING REVENUES:</u>			
Charges for Services:			
Daily Sales Program	\$ 69,603	\$ -	\$ 69,603
After - School Revenues	-	451,189	451,189
Total Operating Revenues	<u>69,603</u>	<u>451,189</u>	<u>520,792</u>
<u>OPERATING EXPENSES:</u>			
Salaries	-	181,136	181,136
Repairs	14,500	-	14,500
After - School Expenses	-	244,284	244,284
Cost of Sales	64,524	-	64,524
Total Operating Expenses	<u>79,024</u>	<u>425,420</u>	<u>504,444</u>
OPERATING INCOME (LOSS)	<u>\$ (9,421)</u>	<u>\$ 25,769</u>	<u>\$ 16,348</u>
<u>NONOPERATING REVENUES:</u>			
Local Sources:			
Interest Earned	188	-	188
Federal Sources:			
National School Lunch Program	-	-	-
National School Breakfast Program	-	-	-
National Snack Program	-	-	-
Total Nonoperating Revenues (Expenses)	<u>188</u>	<u>-</u>	<u>188</u>
CHANGE IN NET POSITION	(9,233)	25,769	16,536
TRANSFERS	-	(29,300)	(29,300)
TOTAL NET POSITION, JULY 1	<u>(9,962)</u>	<u>134,130</u>	<u>124,168</u>
TOTAL NET POSITION, JUNE 30	<u>\$ (19,195)</u>	<u>\$ 130,599</u>	<u>\$ 111,404</u>

TEANECK COMMUNITY CHARTER SCHOOL
 PROPRIETARY FUND
 COMBINING STATEMENT OF CASH FLOWS
 FOR THE FISCAL YEAR ENDED JUNE 30, 2024

	Business - Type Activities Enterprise Funds		
	School Nutrition	After School Program	Total Enterprise
CASH FLOWS FROM OPERATING ACTIVITIES:			
Cash Received from Customers	\$ 69,603	\$ 451,189	\$ 520,792
Cash Payments to Suppliers and Employees	(79,024)	(425,420)	(504,444)
Net Cash (From) To Operating Activities	(9,421)	25,769	16,348
CASH FLOWS FROM NONCAPITAL FINANCING ACTIVITIES:			
Cash Received from State and Federal Reimbur	188	(17,112)	(16,924)
Net Increase (Decrease) in Cash and Cash Equ	(9,233)	8,657	(576)
Cash and Cash Equivalents, Beginning of the Y	(9,962)	145,130	135,168
Cash and Cash Equivalents, End of the Year	\$ (19,195)	\$ 153,787	\$ 134,592
Reconciliation of Operating (Loss) Revenue to Net Cash (Used For) Provided By Operating Activities:			
Operating (Loss) Income (Used For) Provided B	\$ (9,421)	\$ 25,769	\$ 16,348
Changes in Assets and Liabilities:			
Decrease in Unearned Income	-	-	-
Net Cash (From) To Operating Activities	\$ (9,421)	\$ 25,769	\$ 16,348

FIDUCIARY FUNDS

NOT APPLICABLE

NOTES TO THE FINANCIAL STATEMENTS

TEANECK COMMUNITY CHARTER SCHOOL
NOTES TO THE FINANCIAL STATEMENTS
FOR THE FISCAL YEAR ENDED JUNE 30, 2024

NOTE 1: SUMMARY OF SIGNIFICANT ACCOUNTING POLICIES

The financial statements of the Teaneck Community Charter School have been prepared in conformity with generally accepted accounting principles (GAAP) as prescribed by the Governmental Accounting Standards Board (GASB). The GASB is the accounting standard-setting body responsible for establishing governmental accounting and financial reporting principles. The more significant accounting policies of the Charter School are described below.

For fiscal year 2016, the Charter School implemented the Governmental Accounting Standards Board (GASB) Statement No. 68, "Accounting and Financial Reporting for Pensions" and GASB Statement No. 71, "Pension Transition for Contributions Made Subsequent to the Measurement Date – an amendment of GASB Statement No. 68." GASB 68 established standards for measuring and recognizing pension liabilities, deferred outflows of resources and expense/expenditure.

A. Reporting Entity

The Charter School is an instrument of the State of New Jersey, established to function as an educational institution. Its mission is to establish a character school to serve as a neighborhood resource and as a model for other similar schools. The Teaneck Community Charter School is committed to achieving the New Jersey Core Curriculum Content Standards and producing high academic achievement by all students. The Charter School will integrate a holistic curriculum, utilize learner center techniques, family and care giver centered approaches, comprehensive community involvement, cutting edge technology and an intimate nurturing environment that will enhance positive self-images.

The primary criterion for including activities within the Charter School's reporting entity, as set forth in Section 2100 of the GASB's Codification of Governmental Accounting and Financial Reporting Standards, is the degree of oversight responsibility maintained by the Charter School management. Oversight responsibility includes financial interdependency, selection of governing authority, designation of management, and ability to significantly influence operations and accountability for fiscal matters. The combined financial statements include all funds and account groups of the Charter School.

TEANECK COMMUNITY CHARTER SCHOOL
NOTES TO THE FINANCIAL STATEMENTS
FOR THE FISCAL YEAR ENDED JUNE 30, 2024

NOTE 1: SUMMARY OF SIGNIFICANT ACCOUNTING POLICIES (CONTINUED)

B. Basis of Presentation, Basis of Accounting

The Charter School's basic financial statements consist of Charter School-wide statements, including a statement of net position and a statement of activities, and fund financial statements which provide a more detailed level of financial information.

Charter school-wide Statements: The statement of net position and the statement of activities display information about the Charter School as a whole. These statements include the financial activities of the overall Charter School, except for fiduciary activities. Eliminations have been made to minimize the double-counting of internal activities. These statements distinguish between the governmental and business-type activity of the Charter School. Governmental activities generally are financed through intergovernmental revenues, and other non-exchange transactions. Business-type activities are financed in whole or in part by fees charged to external parties.

The statement of net position presents the financial condition of the governmental and business-type activity of the Charter School at fiscal year-end. The statement of activities presents a comparison between direct expenses and program revenues for the business-type activity of the Charter School and for each function of the Charter School's governmental activities. Direct expenses are those that are specifically associated with a program or function and, therefore, are clearly identifiable to a particular function.

Program revenues include (a) fees and charges paid by the recipients of goods or services offered by the programs and (b) grants and contributions that are restricted to meeting the operational or capital requirements of a particular program. Revenues that are not classified as program revenues are presented as general revenues. The comparison of direct expenses with program revenues identifies the extent to which each governmental function or business segment is self-financing or draws from the general revenues of the Charter School. Fund Financial Statements: During the fiscal year, the Charter School segregates transactions related to certain Charter School functions or activities in separate funds in order to aid financial management and to demonstrate legal compliance. The fund financial statements provide information about the Charter School's funds, including its fiduciary funds. Separate statements for each fund category — governmental, proprietary, and fiduciary — are presented. The New Jersey Department of Education (NJDOE) has elected to require New Jersey Charter Schools to treat each governmental fund as a major fund in accordance with the option noted in GASB No. 34, paragraph 76. The NJDOE believes that the presentation of all funds as major is important for public interest and to promote consistency among Charter School financial reporting models.

TEANECK COMMUNITY CHARTER SCHOOL
NOTES TO THE FINANCIAL STATEMENTS
FOR THE FISCAL YEAR ENDED JUNE 30, 2024

NOTE 1: SUMMARY OF SIGNIFICANT ACCOUNTING POLICIES (CONTINUED)

Basis of Presentation, Basis of Accounting (Continued)

The Charter School reports the following governmental funds:

General Fund: The general fund is the general operating fund of the Charter School and is used to account for all expendable financial resources except those required to be accounted for in another fund. Included are certain expenditures for vehicles and movable instructional or non-instructional equipment which are classified in the capital outlay subfund.

As required by the New Jersey State Department of Education, the Charter School includes budgeted capital outlay in this fund. Generally accepted accounting principles as they pertain to governmental entities state that general fund resources may be used to directly finance capital outlays for long-lived improvements as long as the resources in such cases are derived exclusively from unrestricted revenues. Resources for budgeted capital outlay purposes are normally derived from State of New Jersey Aid and appropriated fund balance. Expenditures are those that result in the acquisition of or additions to fixed assets for land, existing buildings, improvements of grounds, construction of buildings, additions to or remodeling of buildings and the purchase of built-in equipment. These resources can be transferred from and to Current Expense by Board resolution.

Special Revenue Fund: The special revenue fund is used to account for the proceeds of specific revenue from State and Federal Government, (other than major capital projects, debt service or the enterprise funds) and local appropriations that are legally restricted to expenditures for specified purposes.

Capital Projects Fund: The capital projects fund is used to account for all financial resources to be used for the acquisition or construction of major capital facilities (other than those financed by proprietary funds).

Debt Service Fund: Not applicable.

The Charter School reports the following proprietary fund:

Enterprise (Food Service and Aftercare) Fund: The enterprise fund accounts for all revenues and expenses pertaining to the cafeteria operations. The food service fund and after school program are utilized to account for operations that are financed and operated in a manner similar to private business enterprises. The stated intent is that the cost (i.e. expenses including depreciation and indirect costs) of providing goods or services to the students on a continuing basis are financed or recovered primarily through user charges.

TEANECK COMMUNITY CHARTER SCHOOL
NOTES TO THE FINANCIAL STATEMENTS
FOR THE FISCAL YEAR ENDED JUNE 30, 2024

NOTE 1: SUMMARY OF SIGNIFICANT ACCOUNTING POLICIES (CONTINUED)

Basis of Presentation, Basis of Accounting (Continued)

Additionally, the Charter School reports the following fund type:

Basis of Accounting

Basis of accounting determines when transactions are recorded in the financial records and reported on the financial statements.

Charter School-wide, Proprietary, and Fiduciary Fund Financial Statements: The financial statements are prepared using the accrual basis of accounting. Governmental funds use the modified accrual basis of accounting; the enterprise fund and fiduciary funds use the accrual basis of accounting. Differences in the accrual and modified accrual basis of accounting arise in the recognition of revenue, the recording of deferred revenue, and in the presentation of expenses versus expenditures. The Charter School is entitled to receive monies under the established payment schedule and the unpaid amount is considered to be an "accounts receivable". Revenue from grants, entitlements, and donations is recognized in the fiscal year in which all eligibility requirements have been satisfied.

Governmental Fund Financial Statements: Governmental funds are reported using the current financial resources measurement focus and the modified accrual basis of accounting. Under this method, revenues are recognized when measurable and available. "Measurable" means the amount of the transaction can be determined and "available" means collectible within the current period or soon enough thereafter to be used to pay liabilities of the current period. Expenditures are recorded when the related fund liability is incurred, except for principal and interest on general long-term debt, claims and judgments, and compensated absences, which are recognized as expenditures to the extent they have matured. General capital asset acquisitions are reported as expenditures in governmental funds. Proceeds of general long-term debt and acquisitions under capital leases are reported as other financing sources.

All governmental and business-type activities and enterprise funds of the Charter School follow FASB Statements and Interpretations issued on or before November 30, 1989, Accounting Principles Board Opinions, and Accounting Research Bulletins, unless those pronouncements conflict with GASB pronouncements.

TEANECK COMMUNITY CHARTER SCHOOL
NOTES TO THE FINANCIAL STATEMENTS
FOR THE FISCAL YEAR ENDED JUNE 30, 2024

NOTE 1: SUMMARY OF SIGNIFICANT ACCOUNTING POLICIES (CONTINUED)

C. Budgets/Budgetary Control

Annual appropriated budgets are prepared in the spring of each year for the general and special revenue funds. Budgets are prepared using the modified accrual basis of accounting except for special revenue funds. The legal level of budgetary control is established at line item accounts within each fund. Line item accounts are defined as the lowest (most specific) level of detail as established pursuant to the minimum chart of accounts referenced in N.J.A.C. 6:20-2A.2(m)1. All budget amendments/transfers must be approved by School Board resolution. All budget amounts presented in the accompanying supplementary information reflect the original budget and the amended budget (which have been adjusted for legally authorized revisions of the annual budgets during the year).

Appropriations, except remaining project appropriations, encumbrances, and unexpended grant appropriations, lapse at the end of each fiscal year. The capital projects fund presents the remaining project appropriations compared to current year expenditures.

Formal budgetary integration into the accounting system is employed as a management control device during the fiscal year. For governmental funds, there are no substantial differences between the budgetary basis of accounting and generally accepted accounting principles (GAAP) with the exception of the special revenue fund as noted below. Encumbrance accounting is also employed as an extension of formal budgetary integration in the governmental fund types. Unencumbered appropriations lapse at fiscal year-end.

The accounting records of the special revenue fund are maintained on the grant accounting budgetary basis. The grant accounting budgetary basis differs from GAAP in that the grant accounting budgetary basis recognizes encumbrances as expenditures and also recognizes the related revenues, whereas the GAAP basis does not. Sufficient supplemental records are maintained to allow for the presentation of GAAP basis financial reports.

The following presents a reconciliation of the Special Revenue Funds from the budgetary basis of accounting to the GAAP basis of accounting:

Total Revenues and Expenditures (Budgetary Basis)	\$ 369,014
Adjustments:	
Less: Encumbrances at June 30, 2023	-
Plus: Encumbrances at June 30, 2023	-
	<u>\$ 369,014</u>

TEANECK COMMUNITY CHARTER SCHOOL
NOTES TO THE FINANCIAL STATEMENTS
FOR THE FISCAL YEAR ENDED JUNE 30, 2024

NOTE 1: SUMMARY OF SIGNIFICANT ACCOUNTING POLICIES (CONTINUED)

D. Encumbrances Accounting

Under encumbrance accounting purchase orders, contracts and other commitments for the expenditure of resources are recorded to reserve a portion of the applicable appropriation. Open encumbrances in governmental funds other than the special revenues fund are reported as reservations of fund balances at fiscal year-end as they do not constitute expenditures or liabilities but rather commitments related to unperformed contracts for goods and services.

Open encumbrances in the special revenue fund for which the Charter School has received advances are reflected in the balance sheet as deferred revenues at fiscal year-end.

The encumbered appropriation authority carries over into the next fiscal year. An entry will be made at the beginning of the next fiscal year to increase the appropriation reflected in the certified budget by the outstanding encumbrance amount as of the current fiscal year end.

E. Assets, Liabilities, and Equity

Interfund Transactions:

Transfers between governmental and business-type activities on the Charter School - wide statements are reported in the same manner as general revenues.

Exchange transactions between funds are reported as revenues in the seller funds and as expenditures/expenses in the purchaser funds. Flows of cash or goods from one fund to another without a requirement for repayment are reported as Interfund transfers. Interfund transfers are reported as other financing sources/uses in governmental funds and after non-operating revenues/expenses in the enterprise fund. Repayments from funds responsible for particular expenditures/expenses to the funds that initially paid for them are not presented on the financial

Inventories:

Inventory purchases, other than those recorded in the enterprise fund, are recorded as expenditures during the year of purchase. Enterprise fund inventories are valued at cost, which approximates market, using the first-in/first-out (FIFO) method.

Allowance for Uncollectible Accounts:

No allowance for uncollectible accounts has been recorded as all amounts are considered collectible.

TEANECK COMMUNITY CHARTER SCHOOL
NOTES TO THE FINANCIAL STATEMENTS
FOR THE FISCAL YEAR ENDED JUNE 30, 2024

NOTE 1: SUMMARY OF SIGNIFICANT ACCOUNTING POLICIES (CONTINUED)

Assets, Liabilities, and Equity (Continued)

Capital Assets:

The Charter School has established a formal system of accounting for its capital assets. Purchased or constructed capital assets are reported at cost. Donated capital assets are valued at their estimated fair market value on the date received. The cost of normal maintenance and repairs that do not add to the value of the asset or materially extend assets' lives are not capitalized. The Charter School does not possess any infrastructure. The capitalization threshold used by Charter Schools in the State of New Jersey is \$2,000.

All reported capital assets except for land and construction in progress are depreciated. Depreciation is computed using the straight-line method under the half year convention over the following estimated useful lives:

<u>Asset Class</u>	<u>Estimated Useful Lives</u>	
School Buildings	50	–
Building Improvements	20	
Electrical/Plumbing	30	
Office & Computer Equipment	5-10	

In the fund financial statements, fixed assets used in governmental fund operations are accounted for as capital outlay expenditures of the governmental fund upon acquisition. Fixed assets are not capitalized and related depreciation is not reported in the fund financial statements.

Unearned Revenue:

Unearned revenue arises when assets are recognized before revenue recognition criteria have been satisfied. Grants and entitlement received before the eligibility requirements are met are recorded as deferred revenue.

Accrued Liabilities and Long-term Obligations:

All payables, accrued liabilities, and long-term obligations are reported on the Charter School – wide financial statements. In general, governmental fund payables and accrued liabilities that, once incurred, are paid in a timely manner and in full from current financial resources are reported as obligations of the funds.

TEANECK COMMUNITY CHARTER SCHOOL
NOTES TO THE FINANCIAL STATEMENTS
FOR THE FISCAL YEAR ENDED JUNE 30, 2024

NOTE 1: SUMMARY OF SIGNIFICANT ACCOUNTING POLICIES (CONTINUED)

Assets, Liabilities, and Equity (Continued)

Net Position:

Net position represents the difference between assets and liabilities. Net investment in capital assets consists of capital assets, net of accumulated depreciation, reduced by the outstanding balance of any borrowing used for the acquisition, construction, or improvement of those assets. Net position are reported as restricted when there are limitations imposed on their use either through the enabling legislation adopted by the Charter School or through external restrictions imposed by creditors, grantors, or laws or regulations of other governments. The Charter School's policy is to first apply restricted resources when an expense is incurred for purposes for which both restricted and unrestricted net position is available.

Fund Balance Reserves:

The Charter School reserves those portions of fund balance which are legally segregated for a specific future use or which do not represent available expendable resources and, therefore, are not available for appropriation or expenditure. Unreserved fund balance indicates that portion which is available for appropriation in future periods. There is no fund balance reserve for the current year.

Revenues — Exchange and Nonexchange Transactions:

Revenue resulting from exchange transactions, in which each party gives and receives essentially equal value, is recorded on the accrual basis when the exchange takes place. On the modified accrual basis, revenue is recorded in the fiscal year in which the resources are measurable and become available. Available means the resources will be collected within the current fiscal year or are expected to be collected soon enough thereafter to be used to pay liabilities of the current fiscal year. For the Charter School, available means within sixty days of the fiscal year end.

Nonexchange transactions, in which the Charter School receives value without directly giving equal value in return, include grants, entitlements, and donations. Revenue from grants, entitlements, and donations are recognized in the fiscal year in which all eligibility requirements have been satisfied. Eligibility requirements include timing requirements, which specify the year when the resources are required to be used or the fiscal year when use is first permitted; matching requirements, in which the Charter School must provide local resources to be used for a specified purpose; and expenditure requirements, in which the resources are provided to the Charter School on a reimbursement basis. On the modified accrual basis, revenue from non exchange transactions must also be available before it can be recognized.

Under the modified accrual basis, the following revenue sources are considered to be both measurable and available at fiscal year-end: state and local revenues available as an advance, interest, and tuition.

TEANECK COMMUNITY CHARTER SCHOOL
NOTES TO THE FINANCIAL STATEMENTS
FOR THE FISCAL YEAR ENDED JUNE 30, 2024

NOTE 1: SUMMARY OF SIGNIFICANT ACCOUNTING POLICIES (CONTINUED)

Assets, Liabilities, and Equity (Continued)

Operating Revenues and Expenses:

Operating revenues are those revenues that are generated directly from the primary activity of the enterprise fund. For the Charter School, these revenues are sales for food service. Operating expenses are necessary costs incurred to provide the service that is the primary activity of the

Allocation of Indirect Expenses:

The Charter School reports all direct expenses by function in the Statement of Activities. Direct expenses are those that are clearly identifiable with a function. Indirect expenses are allocated to functions but are reported separately in the Statement of Activities. Employee benefits, including the employer's share of social security, workers compensation, and medical and dental benefits, were allocated based on salaries of that program. Depreciation expense, where practicable, is specifically identified by function and is included in the indirect expense column of the Statement of Activities.

Extraordinary and Special Items:

Extraordinary items are transactions or events that are unusual in nature and infrequent in occurrence. Special items are transactions or events that are within the control of management and are either unusual in nature or infrequent in occurrence. Neither of these types of transactions occurred during the fiscal year.

Management Estimates:

The preparation of financial statements in conformity with generally accepted accounting principles requires management to make estimates and assumptions that affect the reported amounts of revenues and expenditures/expenses during the reporting period. Actual results could differ from those estimates.

Accrued Salaries and Wages:

Certain Charter School employees who provide services to the Charter School over the ten-month academic year have the option to have their salaries evenly disbursed during the entire twelve-month year. New Jersey statutes require that these earned but undisbursed amounts be retained in a separate bank account.

TEANECK COMMUNITY CHARTER SCHOOL
NOTES TO THE FINANCIAL STATEMENTS
FOR THE FISCAL YEAR ENDED JUNE 30, 2024

NOTE 1: SUMMARY OF SIGNIFICANT ACCOUNTING POLICIES (CONTINUED)

A. Pensions

For purposes of measuring the net pension liability, deferred outflows of resources and deferred inflows of resources related to pensions, and pension expense, information about the fiduciary net pension for the State of New Jersey Public Employees' Retirement System (PERS) and the State of New Jersey Teachers' Pension and Annuity Fund (TPAF) and additions to/deductions from the PERS's and TPAF's net position have been determined on the same basis as they are reported by the PERS and the TPAF. For this purpose, benefit payments (including refunds of employee contributions) are recognized when due and payable in accordance with the benefit terms. Pension Plan investments are reported at fair value.

B. Impact of Recently Issued Accounting Principles

Adopted Accounting Pronouncements

For the year ended June 30, 2024, the Charter School implemented GASB Statement No. 72, Fair Value Measurement and Application. As a result of implementing this statement, the Charter School is required to measure certain investments at fair value for financial reporting purposes. In addition, the Charter School is required to measure donated capital assets at acquisition value (an entry price); these assets were previously required to be measured at fair value. Statement No. 72 requires disclosures to be made about fair value measurements, the level of fair value hierarchy, and valuation techniques. Implementation of this Statement did not impact the Charter School's financial statements.

The Charter School implemented GASB Statement No. 73, Accounting and Financial Reporting for Pensions and Related Assets that are Not Within the Scope of GASB Statement 68, and Amendments to Certain Provisions of GASB Statements 67 and 68. Implementation of this Statement did not impact the Charter School's financial statements.

The Charter School implemented GASB Statement No. 76, The Hierarchy of Generally Accepted Accounting Principles for State and Local Governments. Implementation of this Statement did not impact the Charter School's financial statements.

TEANECK COMMUNITY CHARTER SCHOOL
NOTES TO THE FINANCIAL STATEMENTS
FOR THE FISCAL YEAR ENDED JUNE 30, 2024

NOTE 1: SUMMARY OF SIGNIFICANT ACCOUNTING POLICIES (CONTINUED)

Impact of Recently Issued Accounting Principles (Continued)

Recently Issued and Adopted Accounting Pronouncements

The GASB has issued the following Statements which became effective for the year ended June 30, 2024.

Statement No. 77, Tax Abatement Disclosures. This Statement requires governments that enter into tax abatement agreements to disclose information about those agreements. This Statement will be effective for the year ended June 30, 2024. Management does not expect this Statement to impact the Charter School's financial statements.

Statement No. 78, Pensions Provided Through Certain Multiple-Employer Defined Benefit Pension Plans. The objective of this Statement is to address a practice issue regarding the scope and applicability of Statement No. 68,

Accounting and Financial Reporting for Pensions. This Statement is effective for the year ended June 30, 2024. Management does not expect this Statement to impact the Charter School's financial statements.

TEANECK COMMUNITY CHARTER SCHOOL
NOTES TO THE FINANCIAL STATEMENTS
FOR THE FISCAL YEAR ENDED JUNE 30, 2024

NOTE 1: SUMMARY OF SIGNIFICANT ACCOUNTING POLICIES (CONTINUED)

Impact of Recently Issued Accounting Principles (Continued)

Recently Issued and Adopted Accounting Pronouncements (Continued)

Statement No. 79, Certain External Investment Pools and Pool Participants. This Statement addresses accounting and financial reporting for certain external investment pools and pool participants. This Statement will be effective for the year ended June 30, 2023. Management does not expect this Statement to impact the Charter School's financial statements.

Statement No. 80, Blending Requirements for Certain Component Units – an amendment of GASB Statement No. 14. The objective of this Statement is to improve financial reporting by clarifying the financial statement presentation requirements for certain component units. This Statement amends the blending requirements established in paragraph 53 of Statement No. 14, The Financial Reporting Entity, as amended. This Statement is effective for the year ended June 30, 2023. Management does not expect this Statement to impact the Charter School's financial statements.

Statement No. 81, Irrevocable Split-Interest Agreements. The objective of this Statement is to improve accounting and financial reporting for irrevocable split- interest agreements by providing recognition and measurement guidance for situations in which a government is a beneficiary of the agreement. This Statement is effective for the year ended June 30, 2023. Management does not expect this Statement to impact the Charter School's financial statements.

Statement No. 82, Pension Issues – an amendment of GASB Statements No. 67, 68 and 73. The objective of this Statement is to address certain issues that have been raised with respect to Statements No. 67, Financial Reporting for Pension Plans, No. 68, Accounting and Financial Reporting for Pensions, and No. 73, Accounting and Financial Reporting for Pensions and Related Assets That Are Not Within The Scope of GASB Statement 68, and Amendments to Certain Provisions of GASB Statements 67 and 68. This Statement is effective for the year ended June 30, 2023. Management has not yet determined the potential impact on the Charter School's financial statements.

TEANECK COMMUNITY CHARTER SCHOOL
NOTES TO THE FINANCIAL STATEMENTS
FOR THE FISCAL YEAR ENDED JUNE 30, 2024

NOTE 2: CASH AND CASH EQUIVALENTS

Cash and cash equivalents includes amounts in deposits, money market accounts and short-term investments with original maturities of three months or less.

Investments are stated at cost, or amortized cost, which approximates market. The amortized cost method involves valuing a security at its cost on the date of purchase and thereafter assuming a constant amortization to maturity of any discount or premium. The Board classifies certificates of deposit which have original maturity dates of more than three months but less than twelve months from the date of purchase, as investments.

GASB Statement No. 3 requires disclosure of the level of custodial credit risk assumed by the Board in its cash, cash equivalents and investments. Category 1 includes deposits/investments held by the Board's custodial bank trust department or agent in the Board's name. Category 2 includes uninsured and unregistered deposits/investments held by the Board's custodial bank trust department or agent in the Board's name. Category 3 includes uninsured or unregistered deposits/investments held by a broker or dealer, or held by the Board's custodial bank trust department or agent but not in the Board's name. These categories are not broad representations that deposits or investments are "safe" or "sound."

New Jersey statutes require that charter schools deposit public funds in public depositories located in New Jersey which are insured by the Federal Deposit Insurance Corporation, the Federal Savings and Loan Insurance Corporation, or by any other agency of the United States that insures deposits made in public depositories. Charter schools are also permitted to deposit public funds in the State of New Jersey Cash Management Fund.

New Jersey statutes require public depositories to maintain collateral for deposits of public funds that exceed depository insurance limits as follows:

In addition to the above collateral requirement, if the public funds deposited exceed 75% of the capital funds of the depository, the depository must provide collateral having a market value at least equal to 100% of the amount exceeding 75%.

All collateral must be deposited with the Federal Reserve Bank of New York, the Federal Reserve Bank of Philadelphia, the Federal Home Loan Bank of New York, or a banking institution that is a member of the Federal Reserve System and has capital funds of not less than \$25,000,000.

Investments

New Jersey statutes permit the Board to purchase the following types of securities:

- a. Bonds or other obligations of the United States or obligations guaranteed by the United States.
- b. Bonds of the date of purchase of any Federal Intermediate Credit Bank, Federal Home Loan Bank, Federal National Mortgage Agency or of any United States Bank for Cooperatives which have a maturity date not greater than twelve months from the date of purchase.
- c. Bonds or other obligations of the charter school.

TEANECK COMMUNITY CHARTER SCHOOL
NOTES TO THE FINANCIAL STATEMENTS
FOR THE FISCAL YEAR ENDED JUNE 30, 2024

NOTE 2: CASH AND CASH EQUIVALENTS (CONTINUED)

Investments (Continued)

The Charter School had no investments as of June 30, 2024. Cash and cash equivalents of the Charter School consisted of the following:

	Operating Account
General Fund	\$ 2,122,783
Special Revenue Fund	126,836
Proprietary Fund	112,578
Fiduciary Fund	134,592
	<u>\$ 2,496,789</u>

The carrying amount of the Board's cash and cash equivalents at June 30, 2024 was \$2,496,789. All bank balances were covered by federal depository insurance and/or covered by a collateral pool maintained by the banks as required by New Jersey statutes. The required \$75,000 cash escrow deposit by NJDOE is covered by an insurance policy.

Risk Category

All bank deposits, as of the balance sheet date, are entirely insured or collateralized by a collateral pool maintained by public depositories as required by the Governmental Unit Deposit Protection Act. In general, bank deposits are classified as to credit risk by three categories described below:

Category 1 — Insured or collateralized with securities held by the Board or by its agent in the Board's name.

Category 2 — Collateralized with securities held by the pledging public depository's trust department or agent in the Board's name.

Category 3 — Uncollateralized, including any deposits that are collateralized with securities held by the pledging public depository, or by its trust department or agent, but not in the Board's name.

As of June 30, 2024, the Board had funds invested and on deposit in checking accounts. These funds constitute "deposits with financial institutions" as defined by GASB Statement No. 3 and are classified as Category 1, both at year-end and throughout the year.

TEANECK COMMUNITY CHARTER SCHOOL
NOTES TO THE FINANCIAL STATEMENTS
FOR THE FISCAL YEAR ENDED JUNE 30, 2024

NOTE 2: CASH AND CASH EQUIVALENTS (CONTINUED)

Risk Category (Continued)

New Jersey Cash Management Fund

All investments in the Fund are governed by the regulations of the Investment Council, which prescribe specific standards designed to insure the quality of investments and to minimize the risks related to investments. In all the years of the Division of Investment's existence, the Division has never suffered a default of principal or interest on any short-term security held by it due to the bankruptcy of a securities issuer; nevertheless, the possibility always exists, and for this reason a reserve is being accumulated as additional protection for the "Other-than-State" participants. In addition to the Council regulations, the Division sets further standards for specific investments and monitors the credit of all eligible securities issuers on a regular basis.

As of June 30, 2024, the Charter school had no funds on deposit with the New Jersey Cash Management Fund.

TEANECK COMMUNITY CHARTER SCHOOL
NOTES TO THE FINANCIAL STATEMENTS
FOR THE FISCAL YEAR ENDED JUNE 30, 2024

NOTE 3: RECEIVABLES

Receivables at June 30, 2024 consisted of accounts, intergovernmental, grants, and miscellaneous.

All receivables are considered collectible in full. A summary of the principal items of intergovernmental receivables follows:

	Governmental Wide Financial Statements
State	\$ 11,011
Federal	-
Other	898,172
	<u>\$ 909,183</u>

NOTE 4: INTERFUND TRANSFERS AND BALANCES

Transfers between funds are used to repay expenses paid by another fund.

The following interfund balances remained on the fund financial statements at June 30, 2024:

	Interfund Receivable	Interfund Payable
General Fund	\$ -	\$ -
Special Revenue Fund	-	-
Total	<u>\$ -</u>	<u>\$ -</u>

TEANECK COMMUNITY CHARTER SCHOOL
NOTES TO THE FINANCIAL STATEMENTS
FOR THE FISCAL YEAR ENDED JUNE 30, 2024

NOTE 5: CAPITAL ASSETS

Capital asset activity for the fiscal year ended June 30, 2024, was as follows:

Governmental Activities:

Capital Assets Being Depreciated:

Building Improvements	\$ 1,056,214	\$ 115,489	\$ -	\$ 1,171,703
Machinery and Equipment	748,260	14,296	-	762,556
	<u>1,804,474</u>	<u>129,785</u>	<u>-</u>	<u>1,934,259</u>

Less Accumulated Depreciation For:

Building Improvements	679,394	54,174	-	733,568
Machinery and Equipment	667,674	65,863	-	733,537
	<u>1,347,068</u>	<u>120,037</u>	<u>-</u>	<u>1,467,105</u>

Capital Assets, Net	<u>\$ 457,406</u>	<u>\$ 9,748</u>	<u>\$ -</u>	<u>\$ 467,154</u>
---------------------	-------------------	-----------------	-------------	-------------------

Business Type Activities:

Capital Assets Being Depreciated:

Machinery and Equipment	\$ -	\$ -	\$ -	\$ -
Less Accumulated	-	-	-	-
	<u>\$ -</u>	<u>\$ -</u>	<u>\$ -</u>	<u>\$ -</u>

On January 11, 2001, the NJ State Department of Education announced that effective July 1, 2001, the capitalization threshold used by school districts in the State of New Jersey is increased to \$2,000. The previous threshold was \$500. Applying the higher capitalization threshold retroactively (removal of old assets from the General Fixed Assets Account Group) will be permitted by the State regulations in situations where (1) the assets have been fully depreciated, or (2) the assets have exceeded their useful lives. The retirement of machinery and equipment is due to the retroactive application of the higher threshold of equipment capitalization. That is, the School has removed from their records assets with a historical cost greater than \$500 but not greater than \$2,000 that were fully depreciated or had exceeded their useful lives.

Depreciation expense of \$120,037 was charged to the Capital Outlay function.

TEANECK COMMUNITY CHARTER SCHOOL
NOTES TO THE FINANCIAL STATEMENTS
FOR THE FISCAL YEAR ENDED JUNE 30, 2024

NOTE 6: RENTAL LEASE

The Charter School entered into a sublease agreement with Friends of Teaneck Community Charter School, Inc., ("Friends") a non-profit organization for the building located at 3044 Kennedy Boulevard, Jersey City, New Jersey. The Charter School began occupying the new building for the 2011-2012 school year. The sublease with Friends will expire on July 31, 2052. For the fiscal year ended June 30, 2024 rent expense amounted to \$824,004. Future minimum lease rental payments are as follows:

<u>School Year</u>	<u>Rent Expense</u>
2024-25	\$ 821,408
2025-26	
2026-27	
2027-28	
2028-29	
2029-30	
2030-31	
2031-32	
2032-33	
2033-34	
2034-35	
2035-36	
2036-37	
2037-38	
2038-39	
2039-40	
2040-41	
2041-42	
2042-43	
2043-44	
2044-45	
2045-46	
2046-47	
2047-48	
2048-49	
2049-50	
2050-51	
2051-52	

TEANECK COMMUNITY CHARTER SCHOOL
NOTES TO THE FINANCIAL STATEMENTS
FOR THE FISCAL YEAR ENDED JUNE 30, 2024

NOTE 7: GENERAL LONG-TERM DEBT

During the fiscal year ended June 30, 2024 the following changes occurred in liabilities reported in the general long-term debt account group:

	Balance July 1, 2023	Increases	Decreases	Balance June 30, 2024
Compensated Absences	\$ 119,291	\$ 6,345	\$ 17,686	\$ 107,950
Bonds Payable	-	-	-	-
Capital Leases Payable	-	-	-	-
Totals	<u>\$ 119,291</u>	<u>\$ 6,345</u>	<u>\$ 17,686</u>	<u>\$ 107,950</u>

TEANECK COMMUNITY CHARTER SCHOOL
NOTES TO THE FINANCIAL STATEMENTS
FOR THE FISCAL YEAR ENDED JUNE 30, 2024

NOTE 8: PENSION PLANS

A substantial number of the Charter School's employees participate in one of the following defined benefit pension plans: the Teachers' Pension and Annuity Fund ("TPAF") and the Public Employees' Retirement System ("PERS"), which are administered by the New Jersey Division of Pensions and Benefits (the "Division"). In addition, employees may participate in the Defined Contribution Retirement Program, which is a defined contribution pension plan. This plan is administered by Prudential Financial for the Division. Each plan has a Board of Trustees that is primarily responsible for its administration. The Division issues a publicly available financial report that includes financial statements and required supplementary information. That report may be obtained by writing to:

State of New Jersey
Division of Pensions and Benefits
P.O. Box 295
Trenton, New Jersey 08625-0295
<http://www.nj.gov/treasury/pensions>

General Information about the Pension Plans

Plan Descriptions

Teachers' Pension and Annuity Fund - The Teachers' Pension and Annuity Fund is a cost-sharing multiple-employer defined benefit pension plan, with a special funding situation, which was established as of January 1, 1955, under the provisions of N.J.S.A. 18A:66. The State of New Jersey (the "State") is responsible to fund 100% of the employer contributions, excluding any local employer early retirement incentive (ERI) contributions. The TPAF's designated purpose is to provide retirement benefits, death, disability and medical benefits to certain qualified members. Membership in the TPAF is mandatory for substantially all teachers or members of the professional staff certified by the State Board of Examiners, who have titles that are unclassified, professional and uncertified. The TPAF's Board of Trustees is primarily responsible for the administration of the TPAF.

TEANECK COMMUNITY CHARTER SCHOOL
NOTES TO THE FINANCIAL STATEMENTS
FOR THE FISCAL YEAR ENDED JUNE 30, 2024

NOTE 8: PENSION PLANS (CONTINUED)

General Information about the Pension Plans (Continued)

Plan Descriptions (Continued)

Public Employees' Retirement System - The Public Employees' Retirement System is a cost-sharing multiple-employer defined benefit pension plan which was established as of January 1, 1955, under the provisions of N.J.S.A. 43:15A. The PERS's designated purpose is to provide retirement, death, disability and medical benefits to certain qualified members. Membership in the PERS is mandatory for substantially all full-time employees of the Charter School, provided the employee is not required to be a member of another state administered retirement system or other state pensions fund or local jurisdiction's pension fund. The PERS's Board of Trustees is primarily responsible for the administration of the PERS.

Defined Contribution Retirement Program - The Defined Contribution Retirement Program is a multiple-employer defined contribution pension fund established on July 1, 2007 under the provisions of Chapter 92, P.L. 2007, and Chapter 103, P.L. 2007 (N.J.S.A. 43:15C-1 et. seq.). The DCRP is a tax-qualified defined contribution money purchase pension plan under Internal Revenue Code (IRC) § 401(a) et seq., and is a "governmental plan" within the meaning of IRC § 414(d). The DCRP provides retirement benefits for eligible employees and their beneficiaries. Individuals covered under DCRP are employees enrolled in TPAF or PERS on or after July 1, 2007, who earn salary in excess of established "maximum compensation" limits; employees enrolled in New Jersey State Police Retirement System (SPRS) or the Police and Firemen's Retirement System (PFRS) after May 21, 2010, who earn salary in excess of established "maximum compensation" limits; employees otherwise eligible to enroll in TPAF or PERS on or after November 2, 2008, who do not earn the minimum annual salary for tier 3 enrollment but who earn salary of at least \$5,000.00 annually; and employees otherwise eligible to enroll in TPAF or PERS after May 21, 2010 who do not work the minimum number of hours per week required for tiers 4 or 5 enrollment, but who earn salary of at least \$5,000.00

Vesting and Benefit Provisions

Teachers' Pension and Annuity Fund - The vesting and benefit provisions are set by N.J.S.A. 18A:66. TPAF provides retirement, death and disability benefits. All benefits vest after ten years of service, except for medical benefits, which vest after 25 years of service or under the disability provisions of TPAF. Members are always fully vested for their own contributions and, after three years of service credit, become vested for 2% of related interest earned on the contributions. In the case of death before retirement, members' beneficiaries are entitled to full interest credited to the members' accounts.

TEANECK COMMUNITY CHARTER SCHOOL
NOTES TO THE FINANCIAL STATEMENTS
FOR THE FISCAL YEAR ENDED JUNE 30, 2024

NOTE 8: PENSION PLANS (CONTINUED)

General Information about the Pension Plans (Continued)

The following represents the membership tiers for TPAF and PERS:

Tier

- 1
- 2
- 3
- 4
- 5

Service retirement benefits of 1/55th of final average salary for each year of service credit is available to tiers 1 and 2 members upon reaching age 60 and to tier 3 members upon reaching age 62. Service retirement benefits of 1/60th of final average salary for each year of service credit is available to tier 4 members upon reaching age 62 and tier 5 members upon reaching age 65. Early retirement benefits are available to tiers 1 and 2 members before reaching age 60, tiers 3 and 4 before age 62 with 25 or more years of service credit, and tier 5 before age 65 with 30 or more years of service credit. Benefits are reduced by a fraction of a percent for each month that a member retires prior to the retirement age for his/her respective tier. Deferred retirement is available to members who have at least 10 years of service credit and have not reached the service retirement age for the respective tier.

Public Employees' Retirement System - The vesting and benefit provisions are set by N.J.S.A. 43:15A and 43:3B. The PERS provides retirement, death and disability benefits. All benefits vest after ten years of service, except for medical benefits, which vest after 25 years of service or under the disability provisions of the PERS.

The membership tiers for PERS are the same as previously noted for TPAF.

TEANECK COMMUNITY CHARTER SCHOOL
NOTES TO THE FINANCIAL STATEMENTS
FOR THE FISCAL YEAR ENDED JUNE 30, 2024

NOTE 8: PENSION PLANS (CONTINUED)

Service retirement benefits of 1/55th of final average salary for each year of service credit is available to tiers 1 and 2 members upon reaching age 60 and to tier 3 members upon reaching age 62. Service retirement benefits of 1/60th of final average salary for each year of service credit is available to tier 4 members upon reaching age 62 and tier 5 members upon reaching age 65. Early retirement benefits are available to tiers 1 and 2 members before reaching age 60, tiers 3 and 4 before age 62 with 25 or more years of service credit and tier 5 with 30 or more years of service credit before age 65. Benefits are reduced by a fraction of a percent for each month that a member retires prior to the age at which a member can receive full early retirement benefits in accordance with their respective tier. Tier 1 members can receive an unreduced benefit from age 55 to age 60 if they have at least 25 years of service. Deferred retirement is available to members who have at least 10 years of service credit and have not reached the service retirement age for the respective tier.

Defined Contribution Retirement Program - Eligible members are provided with a defined contribution retirement plan intended to qualify for favorable Federal income tax treatment under IRC Section 401(a), a noncontributory group life insurance plan and a noncontributory group disability benefit plan. A participant's interest in that portion of his or her defined contribution retirement plan account attributable to employee contributions shall immediately become and shall at all times remain fully vested and nonforfeitable. A participant's interest in that portion of his or her defined contribution retirement plan account attributable to employer contributions shall be vested and nonforfeitable on the date the participant commences the second year of employment or upon his or her attainment of age 65, while employed by an employer, whichever occurs first.

Contributions

Teachers' Pension and Annuity Fund - The contribution policy is set by N.J.S.A. 18A:66 and requires contributions by active members and contributing employers. Pursuant to the provisions of Chapter 78, P.L. 2011, the active member contribution rate increased from 5.5% of annual compensation to 6.5% plus an additional 1% phased-in over 7 years beginning in July 2012. The member contribution rate was 7.20% in State fiscal year 2017. The phase-in of the additional incremental member contribution rate takes place in July of each subsequent State fiscal year. The State's contribution is based on an actuarially determined amount, which includes the employer portion of the normal cost and unfunded accrued liability. Funding for noncontributory group insurance benefits is based on actual claims paid. For fiscal year 2021, the State's pension contribution was less than the actuarial determined amount.

Under current statute, all employer contributions are made by the State of New Jersey on-behalf of the Charter School and all other related non-contributing employers. No normal or accrued liability contribution by the Charter School has been required over the preceding fiscal years. These on-behalf contributions by the State of New Jersey are considered a special funding situation, under the definition of GASB 68, Accounting and Financial Reporting for Pensions.

TEANECK COMMUNITY CHARTER SCHOOL
NOTES TO THE FINANCIAL STATEMENTS
FOR THE FISCAL YEAR ENDED JUNE 30, 2024

NOTE 8: PENSION PLANS (CONTINUED)

Contributions (Cont'd)

The Charter School commenced operations on and the enrollment process of Charter School employees in the TPAF began upon hiring of applicable personnel. As a result of the timing of participation in the pension plan, at June 30, 2023 there are no contractual requirements to contribute.

Timing of participation aside, the Charter School would not have been required to make any contributions to the pension plan during the fiscal year ended June 30, 2023 because of the 100% special funding situation with the State of New Jersey.

Based on the most recent TPAF measurement date of June 30, 2019 and the timing of the Charter School's participation in the pension plan, there was no State contractually required contribution, on-behalf of the Charter School, to the pension plan for the fiscal year ended June 30, 2024. Charter School employee contributions to the pension plan during the fiscal year ended June 30, 2024 were \$237,583.

Public Employees' Retirement System - The contribution policy is set by N.J.S.A. 43:15A and requires contributions by active members and contributing employers. Members contribute at a uniform rate. Pursuant to the provisions of Chapter 78, P.L. 2011, the active member contribution rate increased from 5.5% of annual compensation to 6.5% plus an additional 1% phased-in over seven years beginning in July 2012. The member contribution rate was 7.20% in State fiscal year 2017. The phase-in of the additional incremental member contribution rate takes place in July of each subsequent State fiscal year. The rate for members who are eligible for the Prosecutors Part of PERS (Chapter 366, P.L. 2001) increased from 8.5% of base salary to 10%. Employers' contribution amounts are based on an actuarially determined rate. The Charter School's contribution amounts are based on an actuarially determined amount, which includes the normal cost and unfunded accrued liability.

The Charter School's contractually required contribution rate for the fiscal year ended June 30, 2023 was 15.73% of the Charter School's covered payroll. This amount was actuarially determined as the amount that, when combined with employee contributions, is expected to finance the costs of benefits earned by employees during the year, including an additional amount to finance any unfunded accrued liability.

Based on the most recent PERS measurement date of June 30, 2019, the Charter School's contractually required contribution to the pension plan for the fiscal year ended June 30, 2024 was \$93,210 and was paid by April 1, 2023. Charter School employee contributions to the pension plan during the fiscal year ended June 30, 2024 were \$69,407.

TEANECK COMMUNITY CHARTER SCHOOL
NOTES TO THE FINANCIAL STATEMENTS
FOR THE FISCAL YEAR ENDED JUNE 30, 2024

NOTE 8: PENSION PLANS (CONTINUED)

General Information about the Pension Plans (Cont'd)

Vesting and Benefit Provisions (Cont'd)

Defined Contribution Retirement Program - The contribution policy is set by N.J.S.A. 43:15C-3 and requires contributions by active members and contributing employers. In accordance with Chapter 92, P.L. 2007 and Chapter 103, P.L. 2007, plan members are required to contribute 5.5% of their annual covered salary. In addition to the employee contributions, the Charter School contributes 3% of the employees' base salary, for each pay period, to Prudential Financial not later than the fifth business day after the date on which the employee is paid for that pay period.

At June 30, 2024, the Charter School had no employees participating in this program.

Pension Liabilities, Pension Expense, and Deferred Outflows of Resources and Deferred Inflows of Resources Related to Pensions

Public Employees' Retirement System - At June 30, 2024, the Charter School reported a liability of \$898,606 for its proportionate share of the net pension liability. The net pension liability was measured as of June 30, 2017, and the total pension liability used to calculate the net pension liability was determined by an actuarial valuation as of July 1, 2020. The total pension liability was calculated through the use of updated procedures to roll forward from the actuarial valuation date to the measurement date of June 30, 2020. The Charter School's proportion of the net pension liability was based on a projection of the Charter School's long-term share of contributions to the pension plan relative to the projected contributions of all participating employers, actuarially determined. For the June 30, 2020 measurement date, the Charter School's proportion was .0095635073%, which was an increase of .0064475550% from its proportion measured as of June 30, 2020. For the fiscal year ended June 30, 2023, the Charter School recognized pension expense of \$93,210, in the government-wide financial statements. This pension expense was based on the pension plan's June 30, 2021 measurement date.

At June 30, 2024, the Charter School reported deferred outflows of resources and deferred inflows of resources related to PERS from the following sources:

Deferred Outflows of Resources	Deferred Inflows of Resources
<u>\$ 368,472</u>	<u>\$ 133,647</u>

TEANECK COMMUNITY CHARTER SCHOOL
NOTES TO THE FINANCIAL STATEMENTS
FOR THE FISCAL YEAR ENDED JUNE 30, 2024

NOTE 8: PENSION PLANS (CONTINUED)

ACTUARIAL ASSUMPTIONS

The net pension liability was measured as of June 30, 2021, and the total pension liability used to calculate the net pension liability was determined by an actuarial valuation as of July 1, 2019. The total pension liability was calculated through the use of updated procedures to roll forward from the actuarial valuation date to the measurement date of June 30, 2020. This actuarial valuation used the following actuarial assumptions, applied to all periods included in the measurement:

Inflation Rate:

Price	2.75%
Wage	3.25%

Salary Increases:

Through 2026	2.00% - 6.00% Based on Years of Service
Thereafter	3.00% - 7.00% Based on Years of Service

Investment Rate of Return	7.00%
---------------------------	-------

Mortality Rate Table	PUB-2010
----------------------	----------

Period of Actuarial Experience	July 1, 2013 - June 30, 2018
Study upon which Actuarial	July 1, 2015 - June 30, 2018 Respectively

For PERS, pre-retirement mortality rates were based on the RP-2000 Employee Preretirement Mortality Table for male and female active participants. Mortality tables are set back 2 years for males and 7 years for females. In addition, the tables provide for future improvements in mortality from the base year of 2013 using a generational approach based on the plan actuary's modified MP-2014 projection scale. Post-retirement mortality rates were based on the RP-2000 Combined Healthy Male and Female Mortality Tables (setback 1 year for males and females) for service retirements and beneficiaries of former members and a one-year static projection based on mortality improvement Scale AA. In addition, the tables for service retirements and beneficiaries of former members provide for future improvements in mortality from the base year of 2013 using a generational approach based on the plan actuary's modified MP-2014 projection scale. Disability retirement rates used to value disabled retirees were based on the RP-2000 Disabled Mortality Table (set back 3 years for males and set forward 1 year for females).

TEANECK COMMUNITY CHARTER SCHOOL
NOTES TO THE FINANCIAL STATEMENTS
FOR THE FISCAL YEAR ENDED JUNE 30, 2024

NOTE 8: PENSION PLANS (CONTINUED)

For PERS, in accordance with State statute, the long-term expected rate of return on plan investments (7.00% at June 30, 2019) is determined by the State Treasurer, after consultation with the Directors of the Division of Investments and Division of Pensions and Benefits, the board of trustees and the actuaries. The long-term expected rate of return was determined using a building block method in which best-estimate ranges of expected future real rates of return (expected returns, net of pension plan investment expense and inflation) are developed for each major asset class. These ranges are combined to produce the long-term expected rate of return by weighting the expected future real rates of return by the target asset allocation percentage and by adding expected inflation.

Best estimates of arithmetic rates of return for each major asset class included in PERS's target asset allocation as of June 30, 2020 are summarized in the following tables:

<u>Asset Class</u>	<u>Target Allocation</u>	<u>Long Term Expected Real Rate of Return</u>
US Equity	27.00%	8.09%
Non-U.S. Developed Markets E	13.50%	8.71%
Emerging Markets Equity	5.50%	10.96%
Private Equity	13.00%	11.30%
Real Assets	3.00%	7.40%
Real Estate	8.00%	9.50%
High Yield	2.00%	3.15%
Private Credit	8.00%	7.60%
Investment Grade Credit	8.00%	1.88%
Cash Equivalents	4.00%	0.50%
U.S. Treasuries	5.00%	0.95%
Risk Mitigation Strategies	3.00%	3.35%

TEANECK COMMUNITY CHARTER SCHOOL
NOTES TO THE FINANCIAL STATEMENTS
FOR THE FISCAL YEAR ENDED JUNE 30, 2024

NOTE 8: PENSION PLANS (CONTINUED)

Discount Rate - The discount rate used to measure the total pension liability at June 30, 2020 was 7.00% for PERS. For PERS, the respective single blended discount rates were based on the long-term expected rate of return on pension plan investments of 7.00%, and a municipal bond rate of 2.21% as of June 30, 2020, based on the Bond Buyer Go 20-Bond Municipal Bond Index which includes tax-exempt general obligation municipal bonds with an average rating of AA/Aa or higher. The projection of cash flows used to determine the discount rates for PERS assumed that contributions from plan members will be made at the current member contribution rates and that contributions from employers will be made based on the contribution rate in the most recent fiscal year. Based on those assumptions, the plan's fiduciary net position was projected to be available to make projected future benefit payments of current plan members through 2062 for PERS. Therefore, the long-term expected rate of return on plan investments was applied to projected benefit payments through 2062 for PERS, and the municipal bond rate was applied to projected benefit payments after that date in determining the total pension liability.

TEANECK COMMUNITY CHARTER SCHOOL
NOTES TO THE FINANCIAL STATEMENTS
FOR THE FISCAL YEAR ENDED JUNE 30, 2024

NOTE 8: PENSION PLANS (CONTINUED)

Sensitivity of Charter School's Proportionate Share of Net Pension Liability to Changes in the Discount Rate

Public Employees' Retirement System (PERS) - The following presents the Charter School's proportionate share of the net pension liability at June 30, 2020, the plans measurement date, calculated using a discount rate of 5.00%, as well as what the Charter School's proportionate share of the net pension liability would be if it were calculated using a discount rate that is 1% lower or 1% higher than the current rates used:

	Current Discount Rate 7.00%	1% Increase 8.00%
Charter School's Proportionate Share of the Net Pension Liability	\$ 2,337,565	\$ 1,620,744

Pension Plan Fiduciary Net Position

For purposes of measuring the net pension liability, deferred outflows of resources and deferred inflows of resources related to pensions, and pension expense, information about the respective fiduciary net position of the PERS and additions to/deductions from PERS's respective fiduciary net position have been determined on the same basis as they are reported by PERS. Accordingly, benefit payments (including refunds of employee contributions) are recognized when due and payable in accordance with the benefit terms. Investments are reported at fair value. For additional information about PERS, please refer to the plan's Annual Comprehensive Financial Report (ACFR) which can be found at www.nj.gov/treasury/pensions.

TEANECK COMMUNITY CHARTER SCHOOL
NOTES TO THE FINANCIAL STATEMENTS
FOR THE FISCAL YEAR ENDED JUNE 30, 2024

NOTE 9: POST-RETIREMENT MEDICAL BENEFITS

P.L. 1987, c.384 of P.L. 1990, c.6 required Teachers' Pensions and Annuity Fund ("TPAF") and the Public Employees' Retirement System ("PERS"), respectively, to fund post-retirement medical benefits for those State employees who retire after accumulating 25 years of credited service or on a disability retirement. P.L. 2007, c.103 amended the law to eliminate the funding of postemployment medical benefits through the TPAF and PERS. It created separate funds outside of the pension plans for the funding and payment of postemployment medical benefits for retired State employees and retired educational employees. As of June 30, 2015, there were 107,314 retirees receiving postemployment medical benefits, and the State contributed \$1.25 billion on their behalf. The cost of these benefits is funded through contributions by the State in accordance with P.L. 1994, c.62. Funding of post retirement medical premiums changed from a pre-funding basis to a pay-as-you-go basis beginning in fiscal year 1994.

The State is also responsible for the cost attributable to P.L. 1992 c.126, which provides free health benefits to members of PERS and the Alternate Benefit Program who retire from a Board of Education, Charter School or county college with 25 years of service. The State paid \$214.1 million toward Chapter 126 benefits for 19,056 eligible retired members in fiscal year 2015.

TEANECK COMMUNITY CHARTER SCHOOL
NOTES TO THE FINANCIAL STATEMENTS
FOR THE FISCAL YEAR ENDED JUNE 30, 2024

NOTE 10: POSTEMPLOYMENT BENEFITS OTHER THAN PENSIONS (OPEB)

General Information about the OPEB Plan

The State of New Jersey reports a liability as a result of its statutory requirements to pay other postemployment (health) benefits for State Health Benefit Local Education Retired Employees Plan. The State Health Benefit Local Education Retired Employees Plan is a multiple-employer defined benefit OPEB plan that is administered on a pay-as-you-go basis. Accordingly, no assets are accumulated in a qualifying trust that meets the criteria in paragraph 4 of GASB Statement No. 75, Accounting and Financial Reporting for the Postemployment Benefits Other Than Pensions. The State Health Benefit Local Education Retired Employees Plan provides medical, prescription drug, and Medicare Part B reimbursement to retirees and their covered dependents of local education

The employer contributions for the participating local education employers are legally required to be funded by the State of New Jersey in accordance with N.J.S.A 52:14-17.32f. According to N.J.S.A 52:14- 17.32f, the State provides employer-paid coverage to employees who retire from a board of education or county college with 25 years or more of service credit in, or retires on a disability pension from, one or more of the following plans: the Teachers' Pension and Annuity Fund (TPAF), the Public Employees' Retirement System (PERS), the Police and Firemen Retirement System (PFRS), or the Alternate Benefit Program (ABP). Pursuant to Chapter 78, P.L. 2011, future retirees eligible for postretirement medical coverage who have less than 20 years of creditable service on June 28, 2011 will be required to pay a percentage of the cost of their health care coverage in retirement provided they retire with 25 or more years of pension service credit. The percentage of the premium for which the retiree will be responsible will be determined based on the retiree's annual retirement benefit and level of coverage.

The total nonemployer OPEB liability does not include certain other postemployment benefit obligations that are provided by the local education employers. The reporting of these benefits are the responsibility of the individual local education employers.

TEANECK COMMUNITY CHARTER SCHOOL
NOTES TO THE FINANCIAL STATEMENTS
FOR THE FISCAL YEAR ENDED JUNE 30, 2024

NOTE 10: POSTEMPLOYMENT BENEFITS OTHER THAN PENSIONS (OPEB) (CONT'D)

Basis of Presentation

The Schedule presents the State of New Jersey's obligation under NJSA 52:14 17.32f. The Schedule does not purport to be a complete presentation of the financial position or changes in financial position of the State Health Benefit Local Education Retired Employees Plan or the State of New Jersey. The accompanying Schedule was prepared in accordance with U.S. generally accepted accounting principles. Such preparation requires management of the State of New Jersey to make a number of estimates and assumptions relating to the reported amounts. Due to the inherent nature of these estimates, actual results could differ from those estimates.

Total Nonemployer OPEB Liability

The total nonemployer OPEB liability as of June 30, 2021 was determined by an actuarial valuation as of June 30, 2019, which was rolled forward to June 30, 2021. The actuarial assumptions vary for each plan member depending on the pension plan the member is enrolled in. This actuarial valuation used the following actuarial assumptions, applied to all periods in the measurement:

Total Nonemployer OPEB Liability \$67,809,962,608

	PERS
Inflation Rate	2.50%
	Based on
	Years of Service
Salary Increases:	
Through 2026	2.00% - 6.00%
Thereafter	3.00% - 7.00%

Preretirement mortality rates were based on the Pub-2010 Healthy "Teachers" (TPAF/ABP), "General" (PERS), and "Safety" (PFRS) classification headcount-weighted mortality table with fully generational mortality improvement projections from the central year using Scale MP-2020. Postretirement mortality rates were based on the Pub-2010 "General" classification headcount-weighted mortality table with fully generational mortality improvement projections from the central year using Scale MP-2020. Disability mortality was based on the Pub-2010 "General" classification headcount-weighted disabled mortality table with fully generational mortality improvement projections from the central year using Scale MP-2020

The actuarial assumptions used in the June 30, 2019 valuation were based on the results of actuarial experience studies for the periods July 1, 2015 - June 30, 2018, July 1, 2014 - June 30, 2018, and July 1, 2013 - June 30, 2018 for TPAF, PERS and PFRS, respectively.

TEANECK COMMUNITY CHARTER SCHOOL
NOTES TO THE FINANCIAL STATEMENTS
FOR THE FISCAL YEAR ENDED JUNE 30, 2024

NOTE 10: POSTEMPLOYMENT BENEFITS OTHER THAN PENSIONS (OPEB) (CONT'D)

Health Care Trend Assumptions

For pre-Medicare medical benefits, the trend rate is initially 5.6% and decreases to a 4.5% long-term trend rate after seven years. For post-65 medical benefits, the actual fully-insured Medicare Advantage trend rates for fiscal year 2021 through 2022 are reflected. The assumed post-65 medical trend is 4.5% for all future years. For prescription drug benefits, the initial trend rate is 7.0% and decreases to a 4.5% long term trend rate after seven years. For the Medicare Part B reimbursement, the trend rate

Discount rate

The discount rate for June 30, 2020 was 2.21%. This represents the municipal bond return rate as chosen by the Division. The source is the Bond Buyer Go 20 Bond Municipal Bond Index, which includes tax-exempt general obligation municipal bonds with an average rating of AA/Aa or higher. As the long-term rate of return is less than the municipal bond rate, it is not considered in the calculation of the discount rate, rather the discount rate is set at the municipal bond rate.

TEANECK COMMUNITY CHARTER SCHOOL
NOTES TO THE FINANCIAL STATEMENTS
FOR THE FISCAL YEAR ENDED JUNE 30, 2024

NOTE 10: POSTEMPLOYMENT BENEFITS OTHER THAN PENSIONS (OPEB) (CONT'D)

Changes in the Total OPEB Liability

	Total OPEB Liability
Balance as of June 30, 2023 Measurement Date	\$ 6,693,878
Changes for the Year:	
Service Cost	593,119
Interest Cost	148,351
Changes of Benefit Terms	-
Differences Between Expected and Actual Experience	(193,500)
Changes in Assumption or Other Inputs	(1,501,693)
Member Contributions	4,714
Gross Benefit Payments	(146,946)
Net Changes	(1,095,955)
Balance as of June 30, 2024 Measurement Date	\$ 5,597,923

Sensitivity of Total Nonemployer OPEB Liability to changes in the discount rate:

The following presents the total nonemployer OPEB liability as of June 30, 2020, respectively, calculated using the discount rate as disclosed above as well as what the total nonemployer OPEB liability would be if it was calculated using a discount rate that is 1-percentage point lower or 1-percentage point higher than the current rate:

At Discount Rate (2.21%)	At 1% Increase (3.21%)
\$ 67,809,962,608	\$ 56,911,439,160

Sensitivity of Total Nonemployer OPEB Liability to changes in the healthcare trend rate:

The following presents the total nonemployer OPEB liability as of June 30, 2020, calculated using the healthcare trend rate as disclosed above as well as what the total OPEB liability would be if it was calculated using a healthcare trend rate that is 1- percentage point lower or 1-percentage point higher than the current rate:

Healthcare Cost Trend Rate	At 1% Increase
\$ 67,809,962,608	\$ 83,375,182,975

TEANECK COMMUNITY CHARTER SCHOOL
NOTES TO THE FINANCIAL STATEMENTS
FOR THE FISCAL YEAR ENDED JUNE 30, 2024

NOTE 10: POSTEMPLOYMENT BENEFITS OTHER THAN PENSIONS (OPEB) (CONT'D)

For the year ended June 30, 2024, the Charter School recognized OPEB expense of \$614,476.

Special Funding Situation

The participating employer allocations included in the supplemental Schedule of special funding amounts by employer for each employer are provided as each local education employer is required to record in their financial statements, as an expense and corresponding revenue, their respective amount of total OPEB expense attributable to the State of New Jersey under the special funding situation and to include their respective amount of total OPEB liability in their notes to their financial statements. The total OPEB liability and service cost for each employer was determined separately based on actual data for each employer's participants.

TEANECK COMMUNITY CHARTER SCHOOL
NOTES TO THE FINANCIAL STATEMENTS
FOR THE FISCAL YEAR ENDED JUNE 30, 2024

NOTE 11: COMPENSATED ABSENCES

The Board accounts for compensated absences (e.g., unused vacation, sick leave) as directed by Governmental Accounting Standards Board Statement No. 16 (GASB 16), "Accounting for Compensated Absences." A liability for compensated absences attributable to services already rendered and not contingent on a specific event that is outside the control of the employer and employee is accrued as employees earn the rights to the benefits.

Charter School's employees are granted varying amounts of vacation and sick leave in accordance with the Charter School's personnel policy. Upon termination, employees are paid for accrued vacation. The Charter School's policy permits employees to accumulate unused sick leave and carry forward the amount to subsequent years. Upon retirement, employees shall be paid by the Charter School for the unused sick leave in accordance with the Charter School's agreements with the various employee unions.

TEANECK COMMUNITY CHARTER SCHOOL
NOTES TO THE FINANCIAL STATEMENTS
FOR THE FISCAL YEAR ENDED JUNE 30, 2024

NOTE 12: FUND BALANCE APPROPRIATED

General Fund

The General Fund balance in the fund financial statements at June 30, 2024, in the amount of \$3,098,348 is unassigned and undesignated, \$50,000 is reserved for maintenance reserve \$75,000 is reserved for a school closing escrow.

NOTE 13: RISK MANAGEMENT

The Charter School is exposed to various risks of loss related to torts; theft of, damage to, and destruction of assets; errors and omissions; injuries to employees; and natural disasters.

Property and Liability Insurance

The Charter School maintains commercial insurance coverage for property, liability, student accident, and surety bonds. A complete schedule of insurance coverage can be found in the Statistical Section of this Annual Comprehensive Financial Report.

New Jersey Unemployment Compensation Insurance

The Charter School has elected to fund its New Jersey Unemployment Compensation Insurance under the "Benefit Reimbursement Method". Under this plan, the Charter School is required to reimburse the New Jersey Unemployment Trust Fund for the benefits paid to its former employees and charged to its account with the State. The Charter School is billed quarterly for amounts due to the State.

NOTE 14: SUBSEQUENT EVENTS

The Teaneck Community Charter School's management has informed us that there are no significant events that need to be disclosed after the balance sheet date through the date of the audit.

The COVID-19 outbreak in the United States and specifically in New Jersey has caused disruption of the School's normal financial operations. Though the impact on the School's operation cannot be reasonably estimated at this date, it is likely that there will be an impact on certain revenue in the General Fund other than state aid and the local tax levy.

The School's enterprise fund may be impacted by COVID-19 for the fiscal year ending June 30, 2024 as the number of students in the building has been reduced, resulting in no daily sales revenue.

REQUIRED SUPPLEMENTARY INFORMATION - PART II

SECTION C - BUDGETARY COMPARISON SCHEDULES

TEANECK COMMUNITY CHARTER SCHOOL
GENERAL FUND
BUDGETARY COMPARISON SCHEDULE
FOR THE FISCAL YEAR ENDED JUNE 30, 2024

	<u>Original Budget</u>	<u>Budget Transfers</u>	<u>Final Budget</u>	<u>Actual</u>	<u>Variance Final to Actual</u>
REVENUES:					
Local Sources:					
Equalization Aid	\$ 6,827,427	\$ -	\$ 6,827,427	\$ 6,827,427	\$ -
Miscellaneous	-	-	-	101,134	101,134
	<u>6,827,427</u>	<u>-</u>	<u>6,827,427</u>	<u>6,928,561</u>	<u>101,134</u>
State Sources:					
Equalization Aid	397,854	-	397,854	397,854	-
Special Education Categorical Aid	136,952	-	136,952	136,952	-
Security Aid	68,891	-	68,891	68,891	-
On-Behalf - TPAF Pension	-	-	-	959,128	959,128
On-Behalf - TPAF PRM	-	-	-	261,040	261,040
On-Behalf - LTD	-	-	-	466	466
Reimbursed TPAF Social Security	-	-	-	213,851	213,851
	<u>603,697</u>	<u>-</u>	<u>603,697</u>	<u>2,038,182</u>	<u>1,434,485</u>
Total Revenues	<u>7,431,124</u>	<u>-</u>	<u>7,431,124</u>	<u>8,966,743</u>	<u>1,535,619</u>

TEANECK COMMUNITY CHARTER SCHOOL
GENERAL FUND
BUDGETARY COMPARISON SCHEDULE
FOR THE FISCAL YEAR ENDED JUNE 30, 2024

	Original Budget	Budget Transfers	Final Budget	Actual	Variance Final to Actual
EXPENDITURES:					
Instruction:					
Kindergarten - Salaries of Teacher	287,665	-	287,665	277,676	9,989
Grades 1-5 - Salaries of Teachers	1,263,785	(30,686)	1,233,099	1,218,311	14,788
Grades 6-8 - Salaries of Teachers	661,694	(14,008)	647,686	621,076	26,610
Other Salaries for Instruction	1,060,206	43,143	1,103,349	1,009,349	94,000
Purchased Professional/Technical	20,000	(8,100)	11,900	-	11,900
Other Purchased Services	10,000	9,100	19,100	17,540	1,560
General Supplies	60,000	(3,000)	57,000	37,141	19,859
Textbooks	40,000	(20,150)	19,850	15,680	4,170
Miscellaneous	88,000	23,701	111,701	95,587	16,114
Total Instruction	3,491,350	-	3,491,350	3,292,360	198,990
Administrative					
Salaries - General Administration	450,605	-	450,605	431,729	18,876
Salaries of Secretarial/Clerical Ass	131,707	-	131,707	131,707	-
Total Benefits Cost	1,010,000	-	1,010,000	1,007,579	2,421
Purchases Prof/Tech Services	86,900	(5,000)	81,900	73,018	8,882
Other Purchased Services	45,000	-	45,000	43,048	1,952
Communications/Telephone	30,000	5,000	35,000	31,827	3,173
Supplies and Materials	14,000	-	14,000	8,840	5,160
Miscellaneous Expenses	21,000	1,050	22,050	18,616	3,434
Total Administration	1,789,212	1,050	1,790,262	1,746,364	43,898
Support Services					
Salaries	879,883	(231,906)	647,977	568,838	79,139
Other Purchased Services	154,500	140,856	295,356	284,653	10,703
Rental of Land and Buildings	850,000	-	850,000	846,919	3,081
Insurance for Property, Liability, ar	110,000	-	110,000	108,357	1,643
Supplies and Materials	55,000	-	55,000	51,306	3,694
Transportation	50,000	2,170	52,170	52,170	-
Energy Costs (Heat and Electricity	78,000	13,045	91,045	91,045	-
Miscellaneous Expenses	3,000	-	3,000	3,000	-
Total Support Services	2,180,383	(75,835)	2,104,548	2,006,288	98,260
Capital Outlay					
Instructional Equipment	10,000	(10,000)	-	-	-
Non-Instruction Equipment	20,000	(5,704)	14,296	14,296	-
Improvements	25,000	90,489	115,489	115,489	-
Total Capital Outlay	55,000	74,785	129,785	129,785	-

TEANECK COMMUNITY CHARTER SCHOOL
GENERAL FUND
BUDGETARY COMPARISON SCHEDULE
FOR THE FISCAL YEAR ENDED JUNE 30, 2024

	Original Budget	Budget Transfers	Final Budget	Actual	Variance Final to Actual
On-Behalf TPAF Pension Contributio	-	-	-	959,128	(959,128)
On-Behalf TPAF Post Retirement Me	-	-	-	261,040	(261,040)
On-Behalf Long-Term Disability Insu	-	-	-	466	(466)
Reimbursed TPAF Social Security C	-	-	-	213,851	(213,851)
Total Expenditures	<u>7,515,945</u>	<u>-</u>	<u>7,515,945</u>	<u>8,609,282</u>	<u>(1,093,337)</u>
Excess (Deficiency) of Revenues Over (Under) Expenditures	(84,821)	-	(84,821)	357,461	(442,282)
FUND BALANCE, JULY 1	<u>2,740,887</u>	<u>-</u>	<u>2,740,887</u>	<u>2,740,887</u>	<u>-</u>
FUND BALANCE, JUNE 30	<u>\$ 2,656,066</u>	<u>\$ -</u>	<u>\$ 2,656,066</u>	<u>\$ 3,098,348</u>	<u>\$ (442,282)</u>

TEANECK COMMUNITY CHARTER SCHOOL
SPECIAL REVENUE FUND
BUDGETARY COMPARISON SCHEDULE
FOR THE FISCAL YEAR ENDED JUNE 30, 2024

	Original Budget	Budget Transfers	Final Budget	Actual	Variance Final to Actual
<u>REVENUES:</u>					
Federal	\$ 366,514	\$ -	\$ 366,514	\$ 366,514	\$ -
State	-	-	-	-	-
Local	2,500	-	2,500	2,500	-
	<u>369,014</u>	<u>-</u>	<u>369,014</u>	<u>369,014</u>	<u>-</u>
<u>EXPENDITURES:</u>					
Instruction:					
Salaries of Teachers	82,343	-	82,343	82,343	-
Other Salaries for Instruction	-	-	-	-	-
Purchased Professional - Educational Services	56,781	-	56,781	56,781	-
General Supplies	83,714	-	83,714	83,714	-
Other Objects	1,549	-	1,549	1,549	-
	<u>224,387</u>	<u>-</u>	<u>224,387</u>	<u>224,387</u>	<u>-</u>
Support Services:					
Personal Services - Employee Benefits	29,908	-	29,908	29,908	-
Purchased Technical Services - Support	72,069	-	72,069	72,069	-
Supplies and Materials	40,650	-	40,650	40,650	-
	<u>142,627</u>	<u>-</u>	<u>142,627</u>	<u>142,627</u>	<u>-</u>
Capital Outlay:					
Instructional Equipment	-	-	-	-	-
Noninstructional Equipment	2,000	-	2,000	2,000	-
	<u>2,000</u>	<u>-</u>	<u>2,000</u>	<u>2,000</u>	<u>-</u>
Total Expenditures	<u>\$ 369,014</u>	<u>\$ -</u>	<u>\$ 369,014</u>	<u>\$ 369,014</u>	<u>\$ -</u>

NOTES TO THE REQUIRED SUPPLEMENTARY INFORMATION

TEANECK COMMUNITY CHARTER SCHOOL
REQUIRED SUPPLEMENTARY INFORMATION
BUDGETARY COMPARISON - NOTE TO RSI
FISCAL YEAR ENDED JUNE 30, 2024

NOTE A - Explanation of Differences between Budgetary Inflows and Outflows and GAAP Revenues and

	<u>General Fund</u>	<u>Special Revenue Fund</u>
Sources/Inflows of Resources		
Actual amounts (budgetary) "revenues" from the budgetary [C-1] comparison schedules	\$ 8,966,743	\$ 369,014
Difference - Budget to GAAP		
Grant accounting budgetary basis differs from GAAP in that encumbrances are recognized as expenditures, and the related revenue is recognized	-	-
Total revenues as reports on the statement of revenues, [B-2] expenditures and changes in fund balance - governmental funds	\$ 8,966,743	\$ 369,014
Uses/Outflows of resources		
Actual amounts (budgetary basis) "total outflows" from the [C-1] budgetary comparison schedule	\$ 8,609,382	[C-2] \$ 369,014
Differences - Budget to GAAP:		
Encumbrances for supplies and equipment ordered but not received are reported in the year the order is placed for budgetary purposes, but in the year the supplies are received for financial accounting purposes	-	-
Total expenditures as reported on the statement of [B-2] revenues, expenditures and changes in fund balances - governmental funds	\$ 8,609,382	[B-2] \$ 369,014

REQUIRED SUPPLEMENTARY INFORMATION - PART III

SCHEDULE L - SCHEDULES RELATED TO ACCOUNTING AND REPORTING FOR PENSIONS (GASB
68)

TEANECK COMMUNITY CHARTER SCHOOL
REQUIRED SUPPLEMENTARY INFORMATION
SCHEDULE OF THE CHARTER SCHOOL'S PROPORTIONATE SHARE OF THE NET PENSION LIABILITY
PERS - LOCATION NUMBER 02-35630-00
FOR THE FISCAL YEAR ENDED JUNE 30, 2024

	2024	2023	2022
Charter School's proportion of the net pension liability	0.0091975677%	N/A	N/A
Charter School's proportionate share of the net pension liability	\$ 1,332,210	\$ 1,115,475	\$ 898,606
Charter School's covered employees payroll	809,810	N/A	N/A
Charter School's proportionate share of the net pension liability as a percentage of it's covered employee payroll	164.51%	N/A	N/A
Net Position	\$ 2,596,571	N/A	N/A
Plan fiduciary net position as a percentage of the total pension liability	194.91%	N/A	N/A

TEANECK COMMUNITY CHARTER SCHOOL
 REQUIRED SUPPLEMENTARY INFORMATION SCHEDULES
 PUBLIC EMPLOYEES RETIREMENT SYSTEM (PERS)
 FOR THE FISCAL YEAR ENDED JUNE 30, 2024

	<u>2024</u>	<u>2023</u>	<u>2022</u>
Contractually required contribution	\$ 122,928	\$ 93,210	\$ 88,834
Contributions in relation to the contractually required contribution	<u>122,928</u>	<u>93,210</u>	<u>88,834</u>
Contribution Deficiency (Excess)	<u>\$ -</u>	<u>\$ -</u>	<u>\$ -</u>

TEANECK COMMUNITY CHARTER SCHOOL
REQUIRED SUPPLEMENTARY INFORMATION
SCHEDULE OF THE CHARTER SCHOOL'S PROPORTIONATE SHARE OF THE NET PENSION LIABILITY
TPAF - LOCATION NUMBER 01-02094-00
FOR THE FISCAL YEAR ENDED JUNE 30, 2024

	2024	2023	2022
Charter School's proportion of the net pension liability	0.0235572116	N/A	N/A
Charter School's proportionate share of the net pension liability	\$ 12,021,874	\$ 1,115,475	\$ 898,606
Charter School's covered employees payroll	2,931,916	N/A	N/A
Charter School's proportionate share of the net pension liability as a percentage of it's covered employee payroll	410.03%	N/A	N/A
Net Position	\$ 2,596,571	N/A	N/A
Plan fiduciary net position as a percentage of the total pension liability	21.60%	N/A	N/A

NOTES TO THE REQUIRED SUPPLEMENTARY INFORMATION - PART II

TEANECK COMMUNITY CHARTER SCHOOL
NOTES TO REQUIRED SUPPLEMENTARY INFORMATION
PUBLIC EMPLOYEES RETIREMENT SYSTEM
FOR FISCAL YEAR ENDED JUNE 30, 2024

A. Benefit Changes

There were none

B. Changes in Assumptions

The discount rate changed from 7.00% as of June 30, 2021 to 7.25% as of June 30, 2022.

OTHER SUPPLEMENTARY INFORMATION

SECTION E - SPECIAL REVENUE FUND DETAIL STATEMENTS

The Special Revenue Fund is used to account for the proceeds of specific sources (other than expandable trusts or major capital projects) that are legally restricted to expenditures for specific purposes.

TEANECK COMMUNITY CHARTER SCHOOL
SPECIAL REVENUE FUND
COMBINING SCHEDULE OF PROGRAM REVENUES AND EXPENDITURES - BUDGETARY BASIS
FOR THE FISCAL YEAR ENDED JUNE 30, 2024

E-1

		Title I Part A	Title II Part A	Title IV	IDEA Basic	IDEA Preschool	CRRSA	ESSER ARP	Student Activities	Mentoring	NJSBAIG	Grand Total
REVENUE SOURCES:												
Federal Sources		\$ 38,211	\$ 7,069	\$ 10,000	\$ 83,899	\$ 2,422	\$ 4,037	\$ 220,876	\$ -	\$ -	\$ -	\$ 366,514
State Sources		-	-	-	-	-	-	-	-	-	-	-
Local Sources		-	-	-	-	-	-	-	-	500	2,000	2,500
		<u>\$ 38,211</u>	<u>\$ 7,069</u>	<u>\$ 10,000</u>	<u>\$ 83,899</u>	<u>\$ 2,422</u>	<u>\$ 4,037</u>	<u>\$ 220,876</u>	<u>\$ -</u>	<u>\$ 500</u>	<u>\$ 2,000</u>	<u>\$ 369,014</u>
EXPENDITURES:												
Instruction:												
Salaries of Teachers	100-101	\$ 32,000	\$ -	\$ -	\$ 21,695	\$ 2,422	\$ -	\$ 26,226	\$ -	\$ -	\$ -	\$ 82,343
Other Salaries for Instruction	100-106	-	-	-	-	-	-	-	-	-	-	-
Purchased Professional - Educational Sen	100-321	-	-	-	-	-	-	56,781	-	-	-	56,781
General Supplies	100-600	3,763	-	8,451	4,744	-	4,037	62,219	1,173	500	-	84,887
Other Objects	100-800	-	-	1,549	-	-	-	-	-	-	-	1,549
		<u>35,763</u>	<u>-</u>	<u>10,000</u>	<u>26,439</u>	<u>2,422</u>	<u>4,037</u>	<u>145,226</u>	<u>1,173</u>	<u>500</u>	<u>-</u>	<u>225,560</u>
Support Services:												
Personal Services - Employee Benefits	200-200	2,448	-	-	27,460	-	-	-	-	-	-	29,908
Purchased Technical Services - Support	200-300	-	7,069	-	30,000	-	-	35,000	-	-	-	72,069
Supplies and Materials	200-600	-	-	-	-	-	-	40,650	-	-	-	40,650
		<u>2,448</u>	<u>7,069</u>	<u>-</u>	<u>57,460</u>	<u>-</u>	<u>-</u>	<u>75,650</u>	<u>-</u>	<u>-</u>	<u>-</u>	<u>142,627</u>
Capital Outlay:												
Instructional Equipment	400-731	-	-	-	-	-	-	-	-	-	-	-
Noninstructional Equipment	400-732	-	-	-	-	-	-	-	-	-	2,000	2,000
		<u>-</u>	<u>-</u>	<u>-</u>	<u>-</u>	<u>-</u>	<u>-</u>	<u>-</u>	<u>-</u>	<u>-</u>	<u>2,000</u>	<u>2,000</u>
		<u>\$ 38,211</u>	<u>\$ 7,069</u>	<u>\$ 10,000</u>	<u>\$ 83,899</u>	<u>\$ 2,422</u>	<u>\$ 4,037</u>	<u>\$ 220,876</u>	<u>\$ 1,173</u>	<u>\$ 500</u>	<u>\$ 2,000</u>	<u>\$ 370,187</u>
		-	-	-	-	-	-	-	-	-	-	-

SECTION G - PROPRIETARY FUNDS DETAIL STATEMENTS

Proprietary Funds are used to account for operations that are financed and operated in a manner similar to private business enterprises - where the intent of the charter school's board is that the costs of providing goods or services be financed through user charges.

SECTION H - FIDUCIARY ACTIVITIES (NOT APPLICABLE)

Fiduciary Funds are used to account for funds received by the school for a specific purpose.

STATISTICAL SECTION
(UNAUDITED)

TEANECK COMMUNITY CHARTER SCHOOL STATISTICAL SECTION

Contents

Financial Trends

These schedules contain trend information to help the reader understand how the charter school's financial performance and well-being have changed over time.

Revenue Capacity (Not Applicable To Charter School)

These schedules contain information to help the reader assess the district's most significant local revenue source, the property tax.

Debt Capacity

These schedules present information to help the reader assess the affordability of the charter school's current levels of outstanding debt and the charter school's ability to issue additional debt in the future.

Demographic and Economic Information

These schedules offer demographic and economic indicators to help the reader understand the environment within which the charter school's financial activities take place.

Operating Information

These schedules contain service and infrastructure data to help the reader understand how the information in the charter school's financial report relates to the services the district provides and the activities it performs.

Sources: Unless otherwise noted, the information in these schedules is derived from the Annual Comprehensive Financial Reports (ACFR) for the relevant year. The charter school implemented GASB Statement 34 in the fiscal year ending June 30, 2004; schedules presenting charter school wide information include information beginning in that year.

FINANCIAL TRENDS

TEANECK COMMUNITY CHARTER SCHOOL
NET POSITION BY COMPONENT
LAST TEN FISCAL YEARS
UNAUDITED

J-1

	2024	2023	2022	2021	2020	2019	2018	2017	2016	2015
Governmental Activities										
Invested in Capital Assets, Net or Related Debt	\$ 467,154	\$ 338,115	\$ 223,331	\$ 245,577	\$ 364,098	\$ 361,187	\$ 365,292	\$ 449,633	\$ 450,351	\$ 471,904
Debt for Net Pension Liability - PERS	-	-	-	-	(1,251,506)	(1,327,325)	(1,410,861)	(1,827,364)	(1,102,775)	(1,006,807)
Debt for Net OPEB Liability - PERS	-	-	-	-	(4,346,978)	(4,133,683)	(4,783,030)	(5,051,398)	-	-
Restricted	125,000	126,173	131,052	127,377	125,000	125,000	125,000	125,000	105,000	75,000
Unrestricted	1,893,013	1,611,780	1,221,262	691,391	1,428,541	1,171,324	981,687	831,528	633,873	483,004
	<u>\$ 2,485,167</u>	<u>\$ 2,076,068</u>	<u>\$ 1,575,645</u>	<u>\$ 1,064,345</u>	<u>\$ (3,680,845)</u>	<u>\$ (3,803,497)</u>	<u>\$ (4,721,912)</u>	<u>\$ (5,472,601)</u>	<u>\$ 86,449</u>	<u>\$ 23,101</u>
Business - Type Activities										
Unrestricted	<u>\$ 111,404</u>	<u>\$ 124,168</u>	<u>\$ 64,914</u>	<u>\$ 28,720</u>	<u>\$ 29,917</u>	<u>\$ 110,099</u>	<u>\$ 100,244</u>	<u>\$ 63,018</u>	<u>\$ 51,313</u>	<u>\$ 58,090</u>
Governmental - Wide										
Invested in Capital Assets, Net or Related Debt	\$ 467,154	\$ 338,115	\$ 223,331	\$ 245,577	\$ 364,098	\$ 361,187	\$ 365,292	\$ 449,633	\$ 450,351	\$ 471,904
Debt for Net Pension Liability - PERS	-	-	-	-	(1,251,506)	(1,327,325)	(1,410,861)	(1,827,364)	(1,102,775)	(1,006,807)
Debt for Net OPEB Liability - PERS	-	-	-	-	(4,346,978)	(4,133,683)	(4,783,030)	(5,051,398)	-	-
Restricted	125,000	126,173	131,052	127,377	125,000	125,000	125,000	125,000	105,000	75,000
Unrestricted	2,004,417	1,735,948	1,286,176	720,111	1,458,458	1,281,423	1,081,931	894,546	685,186	541,094
	<u>\$ 2,596,571</u>	<u>\$ 2,200,236</u>	<u>\$ 1,640,559</u>	<u>\$ 1,093,065</u>	<u>\$ (3,650,928)</u>	<u>\$ (3,693,398)</u>	<u>\$ (4,621,668)</u>	<u>\$ (5,409,583)</u>	<u>\$ 137,762</u>	<u>\$ 81,191</u>
	-	-	-	-	-	-	-	-	-	-

Source: Comprehensive Annual Financial Report

TEANECK COMMUNITY CHARTER SCHOOL
CHANGES IN FINANCIAL POSITION
LAST TEN FISCAL YEARS
UNAUDITED

J-2

	2024	2023	2022	2021	2020	2019	2018	2017	2016	2015
Expenses:										
Governmental Activities:										
Instruction	\$ 3,516,747	\$ 4,764,589	\$ 4,371,660	\$ 4,043,146	\$ 2,701,694	\$ 2,517,675	\$ 2,411,838	\$ 2,387,869	\$ 2,222,336	\$ 2,570,317
Administration	3,119,463	1,010,353	958,444	954,965	1,165,100	1,116,411	765,965	658,884	735,447	678,575
Support Services	2,148,915	2,412,671	2,130,863	1,904,661	2,840,959	1,814,765	1,961,961	3,165,965	2,346,439	2,247,126
Capital Outlay	141,533	8,453	50,080	98,905	-	-	-	-	-	-
Unallocated Depreciation	-	-	-	-	-	-	-	-	-	-
Depreciation	-	111,408	104,445	97,791	91,402	74,050	63,533	54,979	56,032	68,499
Employee Benefits	-	614,476	792,801	617,640	-	-	-	-	-	-
	8,926,658	8,921,950	8,408,293	7,717,108	6,799,155	5,522,901	5,203,297	6,267,697	5,360,254	5,564,517
Business-Type Activities	533,744	461,930	330,969	5,638	418,196	490,360	464,839	531,534	387,369	218,806
	9,460,402	9,383,880	8,739,262	7,722,746	7,217,351	6,013,261	5,668,136	6,799,231	5,747,623	5,783,323
Program Revenues:										
Governmental Activities:										
Operating Grants and Contributions	369,014	729,919	887,181	738,677	132,329	116,552	109,090	96,562	98,831	103,043
Business-Type Activities:										
Charges for Services	520,792	521,184	367,163	4,440	338,014	500,215	502,065	543,239	380,592	223,640
	889,806	1,251,103	1,254,344	743,117	470,343	616,767	611,155	639,801	479,423	326,683
Net (Expense)/Revenue:										
Governmental Activities	(8,557,644)	(8,192,031)	(7,521,112)	(6,978,431)	(6,666,826)	(5,406,349)	(5,094,207)	(6,171,135)	(5,261,423)	(5,461,474)
Business-Type Activities	(12,952)	59,254	36,194	(1,198)	(80,182)	9,855	37,226	11,705	(6,777)	4,834
	(8,570,596)	(8,132,777)	(7,484,918)	(6,979,629)	(6,747,008)	(5,396,494)	(5,056,981)	(6,159,430)	(5,268,200)	(5,456,640)
General Revenues and Other Changes in Net Position										
Governmental Activities:										
General Purposes	6,827,427	6,581,198	5,998,740	5,709,222	5,560,351	5,175,073	4,846,114	4,669,082	4,496,102	4,256,268
Federal and State Aid Not Restricted	2,035,682	2,082,253	2,005,464	1,526,410	1,226,830	1,146,334	986,943	976,397	807,023	769,870
Investment Earnings	172	-	-	-	2,297	3,357	11,838	18,004	21,646	14,545
Miscellaneous Income	103,462	29,003	28,208	138,634	-	-	-	-	-	-
	8,966,743	8,692,454	8,032,412	7,374,266	6,789,478	6,324,764	5,844,895	5,663,483	5,324,771	5,040,683
Business-Type Activities:										
Investment Earnings	188	-	-	-	-	-	-	-	-	-
Change in Net Assets / Position										
Governmental Activities	409,099	500,423	511,300	395,835	122,652	918,415	750,688	(507,652)	63,348	(420,791)
Business-Type Activities	(12,764)	59,254	36,194	(1,198)	(80,182)	9,855	37,226	11,705	(6,777)	4,834
Total Charter School	\$ 396,335	\$ 559,677	\$ 547,494	\$ 394,637	\$ 42,470	\$ 928,270	\$ 787,914	\$ (495,947)	\$ 56,571	\$ (415,957)

Source: Comprehensive Annual Financial Report

TEANECK COMMUNITY CHARTER SCHOOL
FUND BALANCES - GOVERNMENTAL FUNDS
LAST TEN FISCAL YEARS
UNAUDITED

	2024	2023	2022	2021	2020	2019	2018	2017	2016	2015
General Fund										
Reserved	\$ 125,000	\$ 126,173	\$ 131,052	\$ 127,377	\$ 125,000	\$ 125,000	\$ 125,000	\$ 125,000	\$ 105,000	\$ 75,000
Unassigned	2,973,648	2,740,887	2,470,978	2,068,649	1,428,541	1,171,324	981,687	831,528	633,873	483,004
	<u>\$ 3,098,648</u>	<u>\$ 2,867,060</u>	<u>\$ 2,602,030</u>	<u>\$ 2,196,026</u>	<u>\$ 1,553,541</u>	<u>\$ 1,296,324</u>	<u>\$ 1,106,687</u>	<u>\$ 956,528</u>	<u>\$ 738,873</u>	<u>\$ 558,004</u>

Source: Comprehensive Annual Financial Report

TEANECK COMMUNITY CHARTER SCHOOL
 CHANGES IN FUND BALANCE - GOVERNMENTAL FUNDS
 LAST TEN FISCAL YEARS
 UNAUDITED

J-4

	2024	2023	2022	2021	2020	2019	2018	2017	2016	2015
Revenues:										
Local Sources	\$ 6,931,061	\$ 6,610,201	\$ 6,026,948	\$ 5,847,856	\$ 5,588,914	\$ 5,179,430	\$ 4,857,952	\$ 4,687,086	\$ 4,517,748	\$ 4,270,813
State Sources	2,038,182	1,982,645	1,805,823	1,448,624	1,226,830	1,146,334	986,943	976,397	807,023	781,473
Federal Sources	366,514	215,051	294,021	198,823	106,063	115,552	109,090	96,562	98,831	91,440
	<u>9,335,757</u>	<u>8,807,897</u>	<u>8,126,792</u>	<u>7,495,303</u>	<u>6,921,807</u>	<u>6,441,316</u>	<u>5,953,985</u>	<u>5,760,045</u>	<u>5,423,602</u>	<u>5,143,726</u>
Expenditures:										
Instruction	3,516,747	3,265,350	3,047,391	2,777,058	2,701,694	2,517,675	2,411,838	2,387,869	2,222,336	2,570,317
Administration	3,180,849	2,932,857	2,629,820	2,236,057	1,165,100	1,116,411	700,537	658,884	735,447	678,575
Support Services	2,148,915	2,183,621	1,928,544	-	2,297	3,357	11,838	18,004	2,268,996	2,218,520
Capital Outlay	131,785	161,039	115,033	138,634	-	-	-	-	-	-
	<u>8,978,296</u>	<u>8,542,867</u>	<u>7,720,788</u>	<u>5,151,749</u>	<u>3,869,091</u>	<u>3,637,443</u>	<u>3,124,213</u>	<u>3,064,757</u>	<u>5,226,779</u>	<u>5,467,412</u>
Total Charter School-wide	<u>\$ 357,461</u>	<u>\$ 265,030</u>	<u>\$ 406,004</u>	<u>\$ 2,343,554</u>	<u>\$ 3,052,716</u>	<u>\$ 2,803,873</u>	<u>\$ 2,829,772</u>	<u>\$ 2,695,288</u>	<u>\$ 196,823</u>	<u>\$ (323,686)</u>

Source: Comprehensive Annual Financial Report

TEANECK COMMUNITY CHARTER SCHOOL
 GENERAL FUND - OTHER LOCAL REVENUE BY SOURCE
 LAST TEN FISCAL YEARS
 UNAUDITED

Fiscal Year Ending June 30, 2024	Interest	Miscellaneous Revenue	Total
2024	\$ 172	\$ 100,962	\$ 101,134
2023	-	29,003	29,003
2022	-	28,208	28,208
2021	-	138,634	138,634
2020	-	2,297	2,297
2019	-	3,357	3,357
2018	-	11,838	11,838
2017	-	18,004	18,004
2016	-	14,545	14,545
2015	-	15,870	15,870
2014	-	30,329	30,329

Source: Comprehensive Annual Financial Report

OPERATING INFORMATION

TEANECK COMMUNITY CHARTER SCHOOL
 FULL-TIME EQUIVALENT CHARTER SCHOOL EMPLOYEES BY FUNCTION/PROGRAM
 LAST TEN FISCAL YEARS
 UNAUDITED

J-16

Function	2024	2023	2022	2021	2020	2019	2018	2017	2016	2015
Instruction	36	36	36	36	36	36	36	36	36	36
Administrative	7	7	7	7	7	7	7	7	7	7
Support Services	6	3	2	2	2	2	2	2	2	2
Food Service	1	1	1	1	1	1	1	1	1	1
Total Governmental Activities	50	47	46	46	46	46	46	46	46	46

Source: Charter School Personal Records

TEANECK COMMUNITY CHARTER SCHOOL
 OPERATING STATISTICS
 LAST TEN FISCAL YEARS
 UNAUDITED

J-17

Fiscal Year Ended June 30	Enrollment	Operating Expenditures (General Fund)	Cost Per Pupil	Percentage Change	Teaching Staff**	Pupil / Teacher Ratio	Average Daily Enrollment (ADE)***	Average Daily Attendance (ADA)***	Percent Change in Average Daily Enrollment	Student Attendance Percentage
2024	369	8,846,511	\$ 23,974	0.01%	36	11.0:1	367.8	347.8	2.91%	94.56%
2023	358	8,381,828	\$ 23,413	8.00%	36	11.0:1	357.4	337.6	8.51%	94.40%
2022	351	7,605,755	\$ 21,669	10.20%	36	9.8:1	329.4	349.6	5.91%	100.00%
2021	342	6,724,346	\$ 19,662	-0.01%	36	8.5:1	342.0	341.5	0.00%	100.00%
2020	337	6,664,590	\$ 19,776	-0.16%	36	8.5:1	337.0	337.0	4.66%	100.00%
2019	322	6,251,679	\$ 19,415	2.11%	36	8.5:1	322.0	322.0	0.00%	100.00%
2018	322	5,803,826	\$ 18,024	2.11%	36	8.5:1	322.0	322.0	0.63%	100.00%
2017	320	5,542,390	\$ 17,320	1.09%	36	8.5:1	320.0	320.0	4.57%	100.00%
2016	306	5,242,733	\$ 17,133	0.31%	36	8.5:1	306.0	306.0	0.00%	100.00%
2015	306	5,486,305	\$ 17,929	11.44%	36	8.5:1	306.0	306.0	0.00%	100.00%
2014	306	5,004,840	\$ 16,356	0.00%	36	8.5:1	306.0	306.0	0.29%	100.00%

Source: Charter School Personal Records

Note: Enrollment based on annual final Charter School count.

* Operating expenditures equal total expenditures less debt service and capital outlay.

** Teaching staff includes only full-time equivalents of certified staff.

*** Average daily enrollment and average daily attendance are obtained from School Register Summary (SRS).

TEANECK COMMUNITY CHARTER SCHOOL
INSURANCE SCHEDULE
AS OF FISCAL YEAR ENDED JUNE 30, 2024
UNAUDITED

Commerical Package Policy - New Jersey Schools Insurance Group (NJS)	COVERAGE	DEDUCTIBLE
Real & Personal Property (per occurrence)	\$ 500,000,000	\$ 5,000
Blanket Extra Expense	\$ 50,000,000	\$ 5,000
Blanket Valuable Paper & Records	\$ 10,000,000	\$ 5,000
Demolition & Increased Cost of Construction	\$ 25,000,000	
Limited Builders Risk	\$ 10,000,000	
Fire Dept. Service Charge	\$ 10,000	
Arson Reward	\$ 10,000	
Pollution Cleanup & Removal	\$ 250,000	
Flood / Earthquake:		
Flood Zone A & V	\$ 25,000,000	\$ 500,000
All Other Flood Zones	\$ 75,000,000	\$ 10,000
Earthquake	\$ 50,000,000	\$ 5,000
Terrorism	\$ 1,000,000	
Electric Data Processing:		
Blanket Hardware / Software, Extra Expense, Business Income, Transit, Debris F	\$ 150,000	\$ 1,000
Flood (Deductible for Zone A & Z)		\$ 500,000
(Deductible All Other Flood Zones)		\$ 10,000
Equipment Breakdown		
Combined Single Limit / Accident for Property Damage & Business Inco	\$ 100,000,000	\$ 5,000
Property Damage	Included	
Off Premises Property Damage	\$ 1,000,000	\$ 5,000
Extra Expense	\$ 10,000,000	\$ 5,000
Service Interruption	\$ 10,000,000	\$ 5,000
Perishable Goods	\$ 1,000,000	\$ 5,000
Data Restoration	\$ 1,000,000	\$ 5,000
Demolition	\$ 1,000,000	\$ 5,000
Ordinance or Law	\$ 1,000,000	\$ 5,000
Expediting Expense	\$ 1,000,000	\$ 5,000
Hazardous Substances	\$ 1,000,000	\$ 5,000
Newly Acquired Locations - 120 Days Notice	\$ 1,000,000	\$ 5,000
Crime Coverage:		
Public Employee Dishonesty	\$ 25,000	\$ 500
Theft, Disapp. & Destruction / Money Orders & Counterfeit Currency	\$ 5,000	\$ 500
Forgery or Alteration	\$ 25,000	\$ 500
Computer Fraud	\$ 5,000	
General Liability:		
Bodily Injury & Property Damage	\$ 16,000,000	
Products & Completed Operations	\$ 16,000,000	
Sexual Abuse	\$ 16,000,000	
Personal Injury & Advertising Injury	\$ 16,000,000	\$ 1,000
Employee Benefits Liability	\$10,000 per accident	
Premises Medical Payments	\$5,000 per person	
Terrorism	\$ 1,000,000	
Automotive Coverage:		
Combined Single Limit for Bodily Injury & Property Damage	\$ 16,000,000	\$ 1,000
Personal Injury Protection	\$ 250,000	\$ 1,000
Medical Payments	\$ 10,000	\$ 1,000
Underinsured	\$ 1,000,000	\$ 1,000
Terrorism	\$ 1,000,000	\$ 1,000
Garagekeepers	Included	
School Leaders Errors & Omissions		
Coverage A - protection against "loss" / Wrongful Acts	\$ 16,000,000	\$ 5,000
Coverage B - defense costs for specific administrative actions	100000/Claim	\$ 5,000
	300000/agg	\$ 5,000
Retro Date	7/1/1986	
Workers' Compensation		
Part One	Statutory	
Part Two		
Bodily Injury by Accident	\$ 2,000,000	\$ -
Bodily Injury by Disease	\$ 2,000,000	\$ -
Student / Athletic Volunteer Accident:		
All School - US Fire Insurance Co	\$ 25,000	\$ -
Excess Coverage - Medical Expense Benefits - AIG	\$ 7,500,000	\$ 25,000
Volunteer Workers	\$ 25,000	\$ 1,000

	2022 Audit	2023 Audit	2024 Audit	Source
Cash	\$ 2,372,048	\$ 2,929,580	\$ 2,515,984	Audit: Exhibit A-1
Current Assets (Includes CASH)	2,715,664	3,186,078	3,493,861	Audit: Exhibit A-1
Total Assets	3,131,892	3,643,484	4,329,487	Audit: Exhibit A-1
Current Liabilities	48,720	194,850	159,109	Audit: Exhibit A-1
Total Liabilities	1,140,223	1,429,616	1,732,916	Audit: Exhibit A-1
Net Assets	1,640,559	2,100,236	2,596,571	Audit: Exhibit A-1
Total Revenue	9,286,756	9,943,557	9,487,723	Audit: Exhibit A-2
Total Expenses	8,739,262	9,383,880	9,091,388	Audit: Exhibit A-2
Changes in Net Assets	547,494	559,677	396,335	Audit: Exhibit A-2
Depreciation Expense	104,445	111,408	120,037	Financial Statements / Audit Workpapers
Interest Expense	N/A	N/A		Financial Statements / Audit Workpapers
Principal Payments	N/A	N/A		Financial Statements / Audit Workpapers
Interest Payments	N/A	N/A		Financial Statements / Audit Workpapers

Financial Average Daily Enrollment	329	357	368	DOE Enrollment Reports
March 30th Budgeted Enrollment	329	357	368	Charter School Budget

Changes

Ratio Analysis						
	2022	2023	2024	3 YT CUM	Source:	Target
Current Ratio	55.74	16.35	21.96		Current Assets / Current Liabilities	>1,1
Unrestricted Days Cash	99.07	113.95	101.01		Cash / (Total Expenses / 365)	30-60
Enrollment Variance	100%	100%	100%		Average Daily Enrollment / Budgeted Enrollment	>95%
Default	None	None	None		Audit	not in default
Total Margin	0.6%	0.6%	4.2%	-1%	Change in Net Assets / Total Revenues	positive
Debt to Asset	3.64	5.63	0.40		Total Liabilities / Total Assets	<9
Cash Flow	933,015	557,532	(413,596)		Net change in cash flow from prior years	3 yr cum positive
Debt Service Coverage Ratio	N/A	N/A	N/A		(Change in Net Assets + Depreciation + Interest Expense) / (Principal & Interest Payments)	>1.10

SINGLE AUDIT SECTION

Di Maria & Associates LLP

Accountants and Advisors

245 Union Street
Lodi, New Jersey 07644
Voice 973.779.6890

INDEPENDENT AUDITOR'S REPORT ON INTERNAL CONTROL OVER FINANCIAL REPORTING AND ON COMPLIANCE AND OTHER MATTERS BASED ON AN AUDIT OF FINANCIAL STATEMENTS PERFORMED IN ACCORDANCE WITH "GOVERNMENT AUDITING STANDARDS"

Honorable President
Members of the Board of Trustees
Teaneck Community Charter School
County of Bergen
Teaneck, New Jersey

We have audited, in accordance with the auditing standards generally accepted in the United States of America and the standards applicable to financial audits contained in Government Auditing Standards issued by the Comptroller General of the United States, and in compliance with audit requirements as prescribed by the Office of School Finance, Department of Education, State of New Jersey, the financial statements of the governmental activities, the business-type activities, each major fund, and the aggregate remaining fund information of Teaneck Community Charter School (Charter School), in the County of Bergen, State of New Jersey, as of and for the fiscal year ended June 30, 2024, and the related notes to the financial statements, which collectively comprise the Charter School's basic financial statements, as listed in the table of contents, and have issued our report thereon dated November 30, 2024.

Internal Control over Financial Reporting

In planning and performing our audit of the financial statements, we considered the Charter School's internal control over financial reporting (internal control) to determine the audit procedures that are appropriate in the circumstances for the purpose of expressing our opinions on the financial statements, but not for the purpose of expressing an opinion on the effectiveness of the Charter School's internal control. Accordingly, we do not express an opinion on the effectiveness of the Charter School's internal control.

A deficiency in internal control exists when the design or operation of a control does not allow management or employees, in the normal course of performing their assigned functions, to prevent, or detect and correct, misstatements on a timely basis. A material weakness is a deficiency, or a combination of deficiencies, in internal control, such that there is reasonable possibility that a material misstatement of the entity's financial statements will not be prevented, or detected and corrected on a timely basis.

A significant deficiency is a deficiency, or a combination of deficiencies, in internal control that is less severe than a material weakness, yet important enough to merit attention by those charged with governance.

Our consideration of internal control was for the limited purpose described in the first paragraph of this section and was not designed to identify all deficiencies in internal control that might be material weakness or significant deficiencies. Given these limitations, during our audit we did not identify any deficiencies in internal control that we consider to be material weakness. However, material weakness may exist that have not been identified.

Di Maria & Associates LLP

Reporting on Compliance and Other Matters

As part of obtaining reasonable assurance about whether the Charter School's financial statements are free from material misstatement, we performed tests of its compliance with certain provisions of laws, regulations, contracts, and grant agreements, noncompliance with which could have a direct and material effect on the determination of financial statement amounts. However, providing an opinion on compliance with those provisions was not an objective of our audit, and accordingly, we do not express such an opinion. The results of our tests disclosed no instances of noncompliance or other matter that are required to be reported under audit requirements as prescribed by the Office of School Finance, Department of Education, State of New Jersey.

We also noted other matters that we reported to the Board of Trustees of the Teaneck Community Charter School in a separate report entitled, Auditor's Management Report on Administrative Findings dated November 30, 2024.

Purpose of this Report

The purpose of this report is solely to describe the scope of our testing of internal control and compliance and the results of that testing, and not to provide an opinion on the effectiveness of the entity's internal control or on compliance. This report is an integral part of an audit performed in accordance with the Office of School Finance, Department of Education, State of New Jersey in considering the entity's internal control and compliance. Accordingly, this communication is not suitable for any other purpose.

This report is intended solely for the information and use of management, The Teaneck Community Charter School Board of Trustees, the New Jersey State Department of Education and other state awarding agencies and pass-through entities and is not intended to be and should not be used by anyone other than these specified parties. However, this report is a matter of public record and its distribution is not limited.

Di Maria & Associates LLP
Accountants and Advisors

Frank Di Maria

Frank Di Maria
Public School Accountant
PSA No. 20CS00116800

November 30, 2024

Di Maria & Associates LLP*Accountants and Advisors*

245 Union Street
 Lodi, New Jersey 07644
 Voice 973.779.6890

INDEPENDENT AUDITOR'S REPORT ON COMPLIANCE FOR EACH MAJOR PROGRAM AND ON
 INTERNAL CONTROL OVER COMPLIANCE REQUIRED BY THE UNIFORM GUIDANCE AND
 NEW JERSEY OMB CIRCULAR 15-08

Honorable President
 Members of the Board of Trustees
 Teaneck Community Charter School
 County of Bergen
 Teaneck, New Jersey

Report on Compliance for Each Major Federal and State Program Opinion on Each Major Federal and State Program

We have audited Teaneck Community Charter School's compliance with the types of compliance requirements described in the OMB Compliance Supplement and the New Jersey OMB Circular 15-08 that could have a direct and material effect on each of Teaneck Community Charter School's major federal and state programs for the year ended June 30, 2024. Teaneck Community Charter School's major federal and state programs are identified in the summary of auditor's results section of the accompanying schedule of findings and questioned costs.

In our opinion, Teaneck Community Charter School complied, in all material respects, with the types of compliance requirements referred to above that could have a direct and material effect on each of its major federal and state programs for the year ended June 30, 2024.

Basis for Opinion on Each Major Federal and State Program

We conducted our audit of compliance in accordance with auditing standards generally accepted in the United States of America; the standards applicable to financial audits contained in Government Auditing Standards, issued by the Comptroller General of the United States and the audit requirements of Title 2 U.S. Code of Federal Regulations Part 200, Uniform Administrative Requirements, Cost Principles, and Audit Requirements for Federal Awards (Uniform Guidance) and the New Jersey OMB Circular 15-08. Our responsibilities under those standards and the Uniform Guidance are further described in the Auditor's Responsibilities for the Audit of Compliance section of our report.

We are required to be independent of Teaneck Community Charter School and to meet our other ethical responsibilities, in accordance with relevant ethical requirements relating to our audit. We believe that the audit evidence we have obtained is sufficient and appropriate to provide a basis for our opinion on compliance for each major federal program. Our audit does not provide a legal determination of Teaneck Community Charter School's compliance with the compliance requirements referred to above.

Responsibilities of Management for Compliance

Management is responsible for compliance with the requirements referred to above and for the design, implementation, and maintenance of effective internal control over compliance with the requirements of laws, statutes, regulations, rules, and provisions of contracts or grant agreements applicable to Teaneck Community Charter School's federal and state programs.

Auditor's Responsibilities for the Audit of Compliance

Our objectives are to obtain reasonable assurance about whether material noncompliance with the compliance requirements referred to above occurred, whether due to fraud or error, and express an opinion on Teaneck Community Charter School's compliance based on our audit. Reasonable assurance is a high level of assurance but is not absolute assurance and therefore is not a guarantee that an audit conducted in accordance with generally accepted auditing standards, Government Auditing Standards, the Uniform Guidance and New Jersey OMB Circular 15-08 will always detect material noncompliance when it exists. The risk of not detecting material noncompliance resulting from fraud is higher than for that resulting from error, as fraud may involve collusion, forgery, intentional omissions, misrepresentations, or the override of internal control. Noncompliance with the compliance requirements referred to above is considered material if there is a substantial likelihood that, individually or in the aggregate, it would influence the judgment made by a reasonable user of the report on compliance about Teaneck Community Charter School's compliance with the requirements of each major federal and state programs as a whole.

In performing an audit in accordance with generally accepted auditing standards, Government Auditing Standards, the Uniform Guidance, and New Jersey OMB Circular 15-08, we:

- Exercise professional judgment and maintain professional skepticism throughout the audit.
- Identify and assess the risks of material noncompliance, whether due to fraud or error, and design and perform audit procedures responsive to those risks. Such procedures include examining, on a test basis, evidence regarding Teaneck Community Charter School's, compliance with the compliance requirements referred to above and performing such other procedures as we considered necessary in the circumstances.
- Obtain an understanding of Teaneck Community Charter School's internal control over compliance relevant to the audit in order to design audit procedures that are appropriate in the circumstances and to test and report on internal control over compliance in accordance with the Uniform Guidance and New Jersey OMB Circular 15-08, but not for the purpose of expressing an opinion on the effectiveness of Teaneck Community Charter School's, internal control over compliance. Accordingly, no such opinion is expressed.

We are required to communicate with those charged with governance regarding, among other matters, the planned scope and timing of the audit and any significant deficiencies and material weaknesses in internal control over compliance that we identified during the audit.

Di Maria & Associates LLP

Report on Internal Control Over Compliance

A deficiency in internal control over compliance exists when the design or operation of a control over compliance does not allow management or employees, in the normal course of performing their assigned functions, to prevent, or detect and correct, noncompliance with a type of compliance requirement of a federal and state program on a timely basis. A material weakness in internal control over compliance is a deficiency, or combination of deficiencies, in internal control over compliance, such that there is a reasonable possibility that material noncompliance with a type of compliance requirement of a federal and state program will not be prevented, or detected and corrected, on a timely basis. A significant deficiency in internal control over compliance is a deficiency, or a combination of deficiencies, in internal control over compliance with a type of compliance requirement of a federal and state program that is less severe than a material weakness in internal control over compliance, yet important enough to merit attention by those charged with governance.

Our consideration of internal control over compliance was for the limited purpose described in the Auditor's Responsibilities for the Audit of Compliance section above and was not designed to identify all deficiencies in internal control over compliance that might be material weaknesses or significant deficiencies in internal control over compliance. Given these limitations, during our audit we did not identify any deficiencies in internal control over compliance that we consider to be material weaknesses, as defined above. However, material weaknesses or significant deficiencies in internal control over compliance may exist that were not identified.

Our audit was not designed for the purpose of expressing an opinion on the effectiveness of internal control over compliance. Accordingly, no such opinion is expressed.

The purpose of this report on internal control over compliance is solely to describe the scope of our testing of internal control over compliance and the results of that testing based on the requirements of the Uniform Guidance and New Jersey OMB Circular 15-08,. Accordingly, this report is not suitable for any other purpose.

Di Maria & Associates LLP
Accountants and Advisors

Frank Di Maria

Frank Di Maria
Public School Accountant
PSA No. 20CS00116800

November 30, 2024

TEANECK COMMUNITY CHARTER SCHOOL
SCHEDULE OF EXPENDITURES OF FEDERAL AWARDS
FOR THE FISCAL YEAR ENDED JUNE 30, 2024

Federal Grantor / Pass-through Grantor / Program Title	Federal CFDA Number	Federal FAIN Number	Program or Award Amount	Grant Period		Balance at June 30, 2023		Cash Received	Budgetary Expenditures	Balance at June 30, 2024	
				From	To	(Accounts / Receivable)	Deferred Revenue			Accounts Receivable	Deferred Revenue
U.S. Department of Education Passed through State Department of Education											
<i>Special Revenue Fund:</i>											
<u>ESEA Consolidated</u>											
Title I Part A	84.010	S010A240030	38,211	07/01/23	06/30/24	\$ -	\$ -	\$ 38,211	\$ (38,211)	\$ -	\$ -
Title I Part A	84.010	S010A230030	34,781	07/01/22	06/30/23	(34,781)	-	34,781	-	-	-
Title II Part A	84.367A	S367A240029	7,069	07/01/23	06/30/24	-	-	7,069	(7,069)	-	-
Title IV Part A	84.369	S369A240031	10,000	07/01/23	06/30/24	-	-	10,000	(10,000)	-	-
						(34,781)	-	90,061	(55,280)	-	-
<u>Individuals with Disabilities Cluster</u>											
I.D.E.A. Part B Basic	84.027A	H027A240100	83,899	07/01/23	06/30/24	-	-	83,899	(83,899)	-	-
I.D.E.A. Part B Preschool	84.173A	H173A240114	2,422	07/01/23	06/30/24	-	-	2,422	(2,422)	-	-
						-	-	86,321	(86,321)	-	-
<u>Other Federal Grants</u>											
CRRSA Grants	84.425D	S425D240027	4,037	07/01/23	06/30/24	-	-	4,037	(4,037)	-	-
CRRSA Grants	84.425D	S425D230027	12,051	07/01/22	06/30/23	(12,051)	-	12,051	-	-	-
ESSER ARP Grants	84.425U	S425U240027	227,524	07/01/23	06/30/24	-	-	227,524	(220,876)	-	6,648
ESSER ARP Grants	84.425U	S425U230027	70,442	07/01/22	06/30/23	(70,442)	-	70,442	-	-	-
						(82,493)	-	314,054	(224,913)	-	6,648
Total Expenditures of Federal Awards						\$ (117,274)	\$ -	\$ 490,436	\$ (366,514)	\$ -	\$ 6,648

See accompanying notes to schedules of expenditures.

TEANECK COMMUNITY CHARTER SCHOOL
SCHEDULE OF EXPENDITURES OF STATE FINANCIAL ASSISTANCE
FOR THE FISCAL YEAR ENDED JUNE 30, 2024

Schedule B

State Grantor / Program Title	Grant or State Project Number	Program or Award Amount	Grant Period		Balance at June 30, 2023		Cash Received	Budgetary Expenditures	Balance at June 30, 2024	
			From	To	(Accounts / Receivable)	Deferred Revenue			Accounts Receivable	Deferred Revenue
New Jersey State Department of Education										
General Fund:										
Equalization Aid - State Share	24-495-034-5120-071	397,854	07/01/23	06/30/24	-	-	397,854	(397,854)	-	-
Equalization Aid - State Share	23-495-034-5120-071	303,046	07/01/22	06/30/23	(5,719)	-	5,719	-	-	-
Special Education Categorical Aid	24-495-034-5120-089	136,952	07/01/23	06/30/24	-	-	136,952	(136,952)	-	-
Security Aid	24-495-034-5120-084	68,891	07/01/23	06/30/24	-	-	68,891	(68,891)	-	-
On-Behalf TPAF - Pension Contributions	24-495-034-5095-006	959,128	07/01/23	06/30/24	-	-	959,128	(959,128)	-	-
On-Behalf TPAF - Post Retirement Medical	24-495-034-5095-001	261,040	07/01/23	06/30/24	-	-	261,040	(261,040)	-	-
On-Behalf TPAF - Long-Term Disability Insurance	24-495-034-5095-001	466	07/01/23	06/30/24	-	-	466	(466)	-	-
Reimbursed TPAF - Social Security	24-495-034-5095-003	213,851	07/01/23	06/30/24	-	-	202,840	(213,851)	11,011	-
Reimbursed TPAF - Social Security	23-495-034-5095-003	201,931	07/01/22	06/30/23	(20,652)	-	20,652	-	-	-
					(26,371)	-	2,053,542	(2,038,182)	11,011	-
Special Revenue Fund:										
Climate Awareness Grant		6,660	07/01/22	06/30/23	(6,660)	-	6,660	-	-	-
Charter Emergent Needs	24-495-034-5095-006	107,081	07/01/23	06/30/24	-	-	107,081	-	-	107,081
					(6,660)	-	113,741	-	-	107,081
Total State Expenditures Subject to Single Audit Determination					(33,031)	-	2,167,283	(2,038,182)	11,011	107,081
State Expenditures Not Subject to Major Program Determination:										
General Fund:										
On-Behalf TPAF - Pension Contributions	24-495-034-5095-006	959,128	07/01/23	06/30/24	-	-	959,128	(959,128)	-	-
On-Behalf TPAF - Post Retirement Medical	24-495-034-5095-001	261,040	07/01/23	06/30/24	-	-	261,040	(261,040)	-	-
On-Behalf TPAF - Long-Term Disability Insurance	24-495-034-5095-001	466	07/01/23	06/30/24	-	-	466	(466)	-	-
					-	-	1,220,634	(1,220,634)	-	-
Total Expenditures of State Awards Subject to Major Program Determination					\$ (33,031)	\$ -	\$ 946,649	\$ (817,548)	\$ 11,011	\$ 107,081

See accompanying notes to schedules of expenditures.

TEANECK COMMUNITY CHARTER SCHOOL
NOTES TO SCHEDULES OF EXPENDITURES OF AWARDS AND FINANCIAL ASSISTANCE
FOR THE FISCAL YEAR ENDED JUNE 30, 2024

NOTE 1 - GENERAL

The accompanying schedules of expenditures of federal awards and state financial assistance include federal and state award activity of the Board of Trustees, Teaneck Community Charter School. The Board of Trustees is defined in Note 1 to the board's basic financial statements. All federal and state awards received directly from federal and state agencies, as well as federal awards and state financial assistance passed through other government agencies is included on the schedule of expenditures of federal awards and state financial assistance.

NOTE 2 - BASIS OF ACCOUNTING

The accompanying schedules of expenditures of awards and financial assistance are presented on the budgetary basis of accounting with the exception of programs recorded in the food service fund, which are presented using the accrual basis of accounting. These bases of accounting are described in Note 1 to the board's basic financial statements. The information in this schedule is presented in accordance with the requirements of 2 (CFR) Part 200 - Uniform Guidance Administrative Requirements, Cost Principles, and Audit Requirements for Federal Awards (Uniform Guidance) and the audit requirements as prescribed by the Office of School Finance, Department of Education, State of New Jersey; New Jersey Circular 15-08 OMB, Single Audit Policy for Recipients of Federal Grants, State Grants and State Aid. Therefore, some amounts presented in this schedule may differ from amounts presented in, or used in the presentation of, the basic financial statements. This does not apply to charter schools as districts are not permitted to defer the June payments to charter schools.

TEANECK COMMUNITY CHARTER SCHOOL
NOTES TO SCHEDULES OF EXPENDITURES OF AWARDS AND FINANCIAL ASSISTANCE
FOR THE FISCAL YEAR ENDED JUNE 30, 2024

NOTE 3 - RELATIONSHIP TO BASIC FINANCIAL STATEMENTS

The basic financial statements present the general fund and special revenue fund on a GAAP basis. Budgetary comparison statements or schedules (RSI) are presented for the general fund and special revenue fund to demonstrate finance-related legal compliance in which certain revenue is permitted by law or grant agreement to be recognized in the audit year, whereas for GAAP reporting, revenue is not recognized until the subsequent year or when expenditures have been made.

The general fund is presented in the accompanying schedules on the modified accrual basis with the exception of the revenue recognition of the one or more deferred June state aid payments in the current budget year, which is mandated pursuant to N.J.S.A. 18A:22-44.2. For GAAP purposes payments are not recognized until the subsequent budget year due to the state deferral and recording of the one or more June state aid payments in the subsequent year. The special revenue fund is presented in the accompanying schedules on the grant accounting budgetary basis which recognizes encumbrances as expenditures and also recognizes the related revenues, whereas the GAAP basis does not.

The net adjustment to reconcile from the budgetary basis to the GAAP basis is none for the general fund and none for the special revenue fund. See Notes to the Required Supplementary Information for a reconciliation of the budgetary basis to the modified accrual basis of accounting for the general and special revenue funds. Awards and financial assistance revenues are reported in the board's basic financial statements on a GAAP basis as presented below:

	<u>Federal</u>	<u>State</u>	<u>Total</u>
General Fund	\$ -	\$ 2,038,182	\$ 2,038,182
Special Revenue Fund	367,165	-	367,165
Enterprise Fund	-	-	-
	<u>\$ 367,165</u>	<u>\$ 2,038,182</u>	<u>\$ 2,405,347</u>

TEANECK COMMUNITY CHARTER SCHOOL
NOTES TO SCHEDULES OF EXPENDITURES OF AWARDS AND FINANCIAL ASSISTANCE
FOR THE FISCAL YEAR ENDED JUNE 30, 2024

NOTE 4 - RELATIONSHIP TO FEDERAL STATE FINANCIAL REPORTS

Amounts reported in the accompanying schedules agree with the amounts reported in the related federal and state financial reports.

NOTE 5 - FEDERAL AND STATE LOANS OUTSTANDING

Teaneck Community Charter School has no loan balances outstanding at June 30, 2024.

NOTE 6 - Other

Revenues and expenditures reported under the Food Distribution Program represent current year value received and current year distributions respectively. The amount reported as TPAF Pension Contributions represents the amount paid by the state on behalf of the charter school for the year ended June 30, 2024. TPAF Social Security Contributions represents the amount reimbursed by the state for the employer's share of social security contributions for TPAF members for the year ended June 30, 2024.

NOTE 7 - ON-BEHALF PROGRAMS NOT SUBJECT TO STATE SINGLE AUDIT

On-behalf State Programs for TPAF Pension and Post-Retirement Medical Benefits Contributions payments are not subject to a State single audit and, therefore, are excluded from major program determination. The Schedule of State Financial Assistance provides a reconciliation of State financial assistance reported in the Charter School's basic financial statements and the amount subject to State single audit and major program determination.

NOTE 8 - SCHOOLWIDE PROGRAM FUNDS

Schoolwide programs are not separate federal programs as defined in Uniform Guidance; amounts used in schoolwide programs are included in the total expenditures of the program contributing the funds in the Schedule of Expenditures of Federal Awards. There are no funds by program included in schoolwide programs in the charter school.

TEANECK COMMUNITY CHARTER SCHOOL
 SCHEDULE OF FINDINGS AND QUESTIONED COSTS
 FOR THE FISCAL YEAR ENDED JUNE 30, 2024

Section I -- Summary of Auditors' Results

Financial Statements

- | | | |
|--|-----------|-------------------|
| A) Type of auditors' report issued: | | <u>Unmodified</u> |
| B) Internal control over financial reporting: | | |
| 1. Material weakness(es) identified? | _____ yes | _____ <u>X</u> no |
| 2. Significant deficiency(ies) identified not
considered to be material weakness(es)? | _____ yes | _____ <u>X</u> no |
| C) Noncompliance material to general-purpose
financial statements noted? | _____ yes | _____ <u>X</u> no |

TEANECK COMMUNITY CHARTER SCHOOL
SCHEDULE OF FINDINGS AND QUESTIONED COSTS
FOR THE FISCAL YEAR ENDED JUNE 30, 2024

Section I -- Summary of Auditors' Results (Continued)

Federal Awards

****NOT APPLICABLE - EXPENDITURES UNDER \$750,000****

A) Internal control over major programs:

- | | | |
|---|-----------|----------|
| 1. Material weakness(es) identified? | _____ yes | _____ no |
| 2. Significant deficiency(ies) identified not considered to be material weakness(es)? | _____ yes | _____ no |

B) Type of auditors' report issued on compliance for major programs:

C) Any audit findings disclosed that are required to be reported in accordance with 2 CFR section 200.516(a) section .516(a)?

_____ yes _____ no

D) Identification of major programs:

CFDA Number(s)

Name of Federal Program or Cluster

E) Dollar threshold used to distinguish between type A and type B programs:

F) Auditee qualified as low-risk auditee? _____ yes _____ no

TEANECK COMMUNITY CHARTER SCHOOL
SCHEDULE OF FINDINGS AND QUESTIONED COSTS
FOR THE FISCAL YEAR ENDED JUNE 30, 2024

Section I -- Summary of Auditors' Results (Continued)

State Awards

A) Internal control over major programs:

- | | | |
|---|-----------------------|---------------------|
| 1. Material weakness(es) identified? | <u> </u> yes | <u> X </u> no |
| 2. Significant deficiency(ies) identified not considered to be material weakness(es)? | <u> </u> yes | <u> X </u> no |

B) Type of auditors' report issued on compliance for major programs:

Unmodified

C) Any audit findings disclosed that are required to be reported in accordance with NJ OMB Circular Letter 15-08?

 yes X no

D) Identification of major programs:

<u>Program GMIS Number(s)</u>	<u>Name of State Program</u>
24-495-034-5120-071	Equalization Aid
24-495-034-5120-089	Special Education Categorical Aid
24-495-034-5120-084	Security Aid

E) Dollar threshold used to distinguish between type A and type B programs:

\$ 750,000

F) Auditee qualified as low-risk auditee?

 X yes no

TEANECK COMMUNITY CHARTER SCHOOL
SCHEDULE OF FINDINGS AND QUESTIONED COSTS
FOR THE FISCAL YEAR ENDED JUNE 30, 2024

Section II -- Financial Statement Findings

None

TEANECK COMMUNITY CHARTER SCHOOL
SCHEDULE OF FINDINGS AND QUESTIONED COSTS
FOR THE FISCAL YEAR ENDED JUNE 30, 2024

Section III -- Federal and State Award Findings and Questioned Costs

Current Year

Federal Awards:

There were no findings or questioned costs identified.

State Awards:

There were no findings or questioned costs identified.

TEANECK COMMUNITY CHARTER SCHOOL
SUMMARY SCHEDULE OF PRIOR AUDIT FINDINGS AND QUESTIONED COSTS
AS PREPARED BY MANAGEMENT
FOR THE FISCAL YEAR ENDED JUNE 30, 2024

STATUS OF PRIOR YEAR FINDINGS

This section identifies the status of prior year findings related to the basic financial statements and federal and state awards that are required to be reported in accordance with Chapter 6.12 of *Government Auditing Standards*, NJ Circular 04-04-OMB or 15-08-OMB as applicable.

Findings:

There were no matters reported.