

New Jersey Department of Health and Senior Services
Communicable Disease Service
Influenza Activity Summary
Week Ending October 28, 2006 (MMWR Week 43)

Influenza activity level: **NO ACTIVITY**

No Activity- At least 2 of 3 parameters at or below state baseline **AND** no lab confirmed cases

Sporadic – At least 2 of 3 parameters above state baseline **AND** confirmed laboratory cases anywhere in the state
OR at least one laboratory confirmed outbreak in an institution anywhere in the state

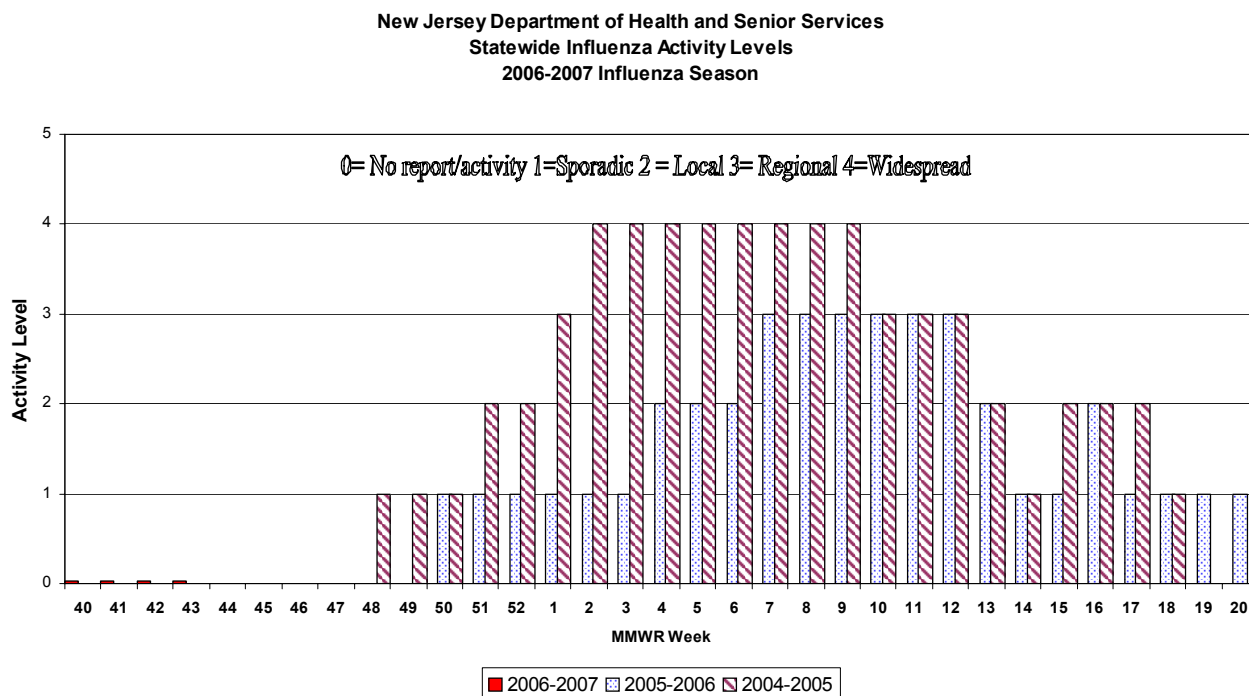
Local – At least 2 of 3 parameters above state baseline in a single county **AND** confirmed laboratory cases from that same county within the previous 3 weeks (other counties may be above baseline without lab confirmed cases) **OR** confirmed outbreaks in 2 or more institutions in a single county

Regional – At least 2 of 3 parameters above state baseline in ≥ 2 but ≤ 10 counties **AND** laboratory confirmed cases from these same counties in past 3 weeks **OR** confirmed outbreaks institutions in ≥ 2 but ≤ 10 counties

Widespread – At least 2 of 3 parameters above state baseline in > 10 counties **OR** institutional outbreaks in > 10 counties **AND** lab confirmed influenza cases in previous 3 weeks.

Parameter = School, emergency department, or long term care weekly surveillance data

Baseline is calculated by taking the average of statewide percentages of ILI for a 3 year (2004, 2005, 2006) period during months when influenza is less likely to be circulating (May-August). Weeks in which less than 4 counties reported were not included in the calculation.



Regional Data **NO ACTIVITY IN ANY REGION**

Public Health Regions

NW Region (Morris, Passaic, Sussex, Warren)

NE Region (Bergen, Essex, Hudson)

CW Region (Hunterdon, Mercer, Somerset)

CE Region (Middlesex, Monmouth, Ocean, Union)

South Region (Atlantic, Burlington, Camden, Cape May, Cumberland, Gloucester, Salem)

No Activity- At least 2 of 3 parameters at or below state baseline **AND** no lab confirmed cases in the public health region

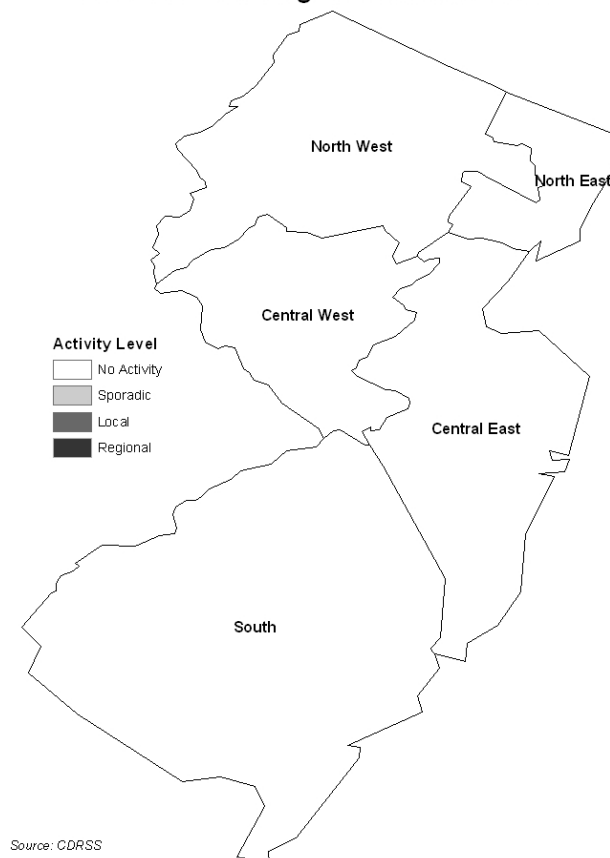
Sporadic – At least 2 of 3 parameters above state baseline **AND** confirmed laboratory cases anywhere in the public health region **OR** at least one laboratory confirmed outbreak in an institution anywhere in the public health region

Local – At least 2 or 3 parameters above state baseline in a single county of a public health region **AND** confirmed laboratory cases from that same county within the previous 3 weeks (other counties may be above baseline without lab confirmed cases) **OR** confirmed outbreaks in 2 or more institutions in a single county of a public health region

Regional – At least 2 of 3 parameters above state baseline in at least half of counties of public health region **AND** laboratory confirmed cases from these same counties in past 3 weeks **OR** confirmed outbreaks institutions in at least half of counties of public health region counties

Widespread – Not used for public health region data

Public Health Region Influenza Data



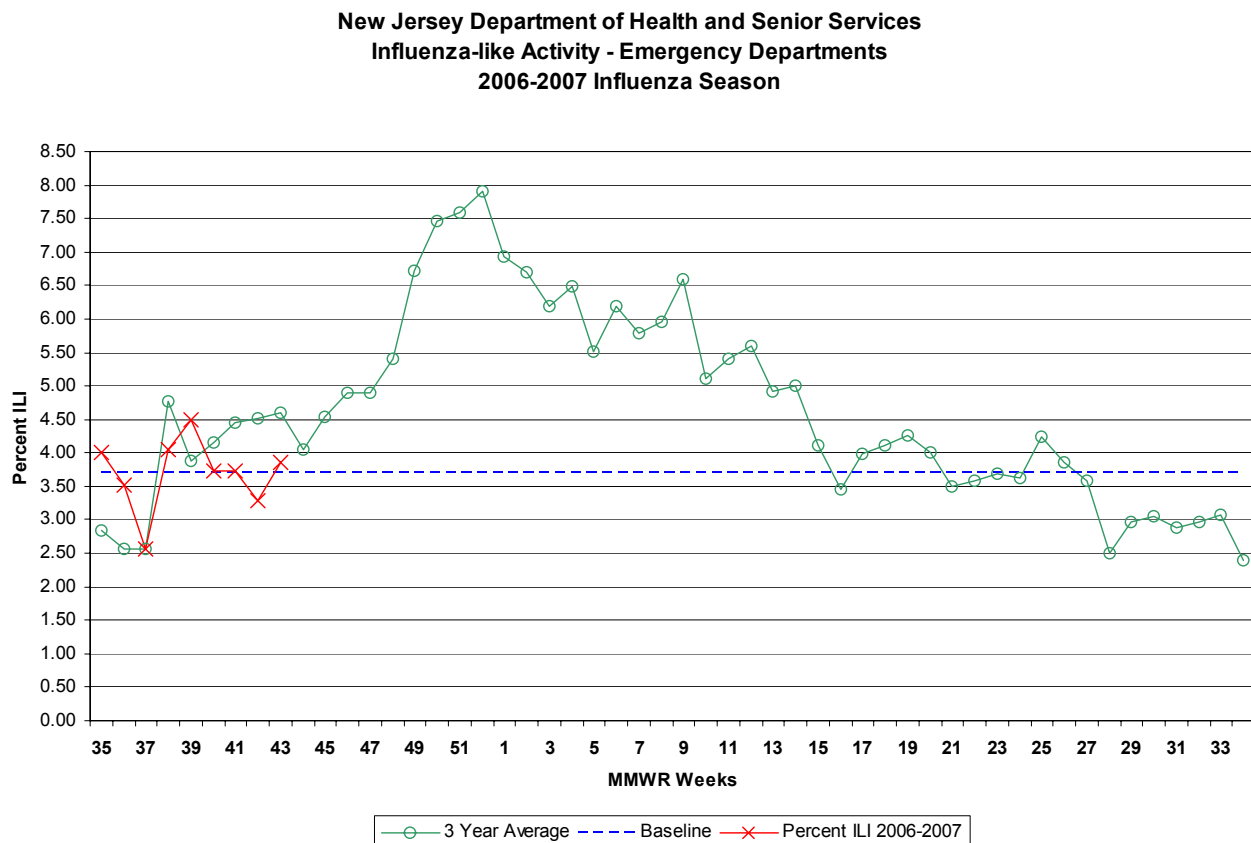
Laboratory Surveillance

During week 43, Hackensack University Medical Center and NJDHSS PHEL have tested 16 samples for influenza. The total number of samples tested during the 2006-2007 influenza season is 73. None of these samples were positive for influenza.

Influenza-like Illness (ILI) Surveillance*

Emergency Departments

During week 43, 3.85% ILI was reported statewide from emergency departments. This is an increase over the previous week (3.29%). The percent ILI for each county ranged from 1.02% to 15.92%. The percent ILI for this same week last year was 4.91% in emergency departments. The percent ILI for the northeast (4.77%) and central west (6.29%) public health regions were above state baseline (3.71%).

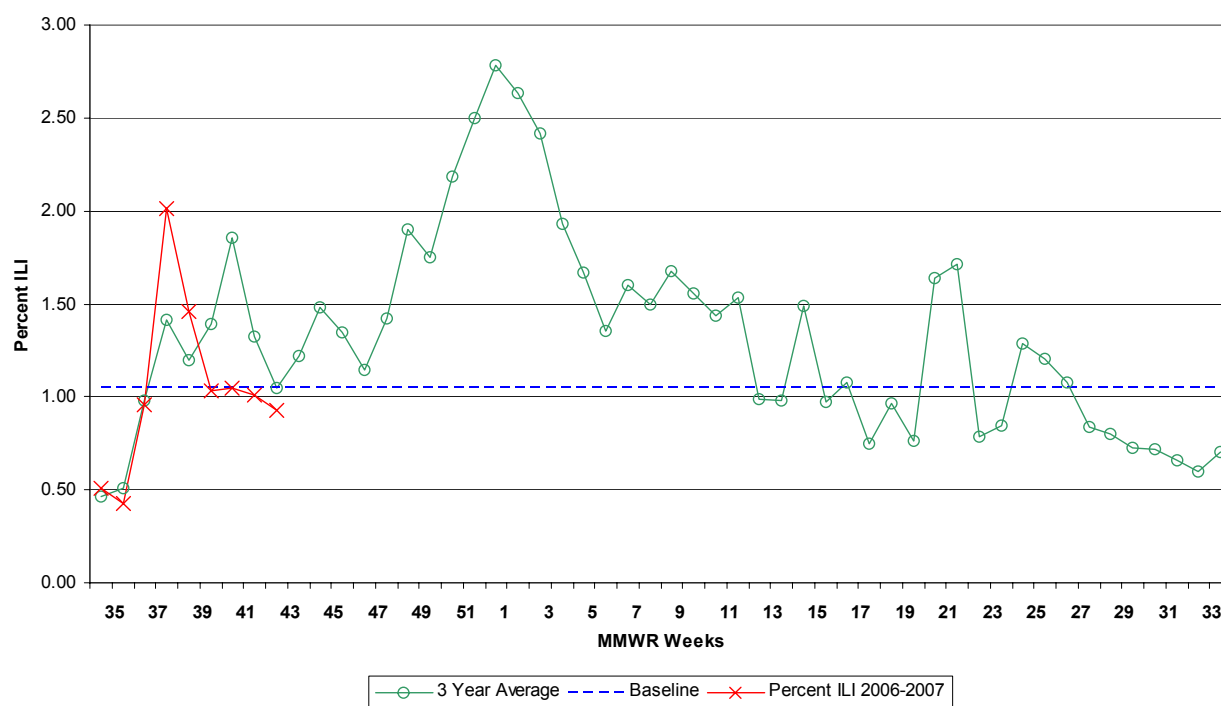


*Additional data has been received from Essex, Mercer, and counties. This data is not reflected in this report.

Long-term Care Facilities

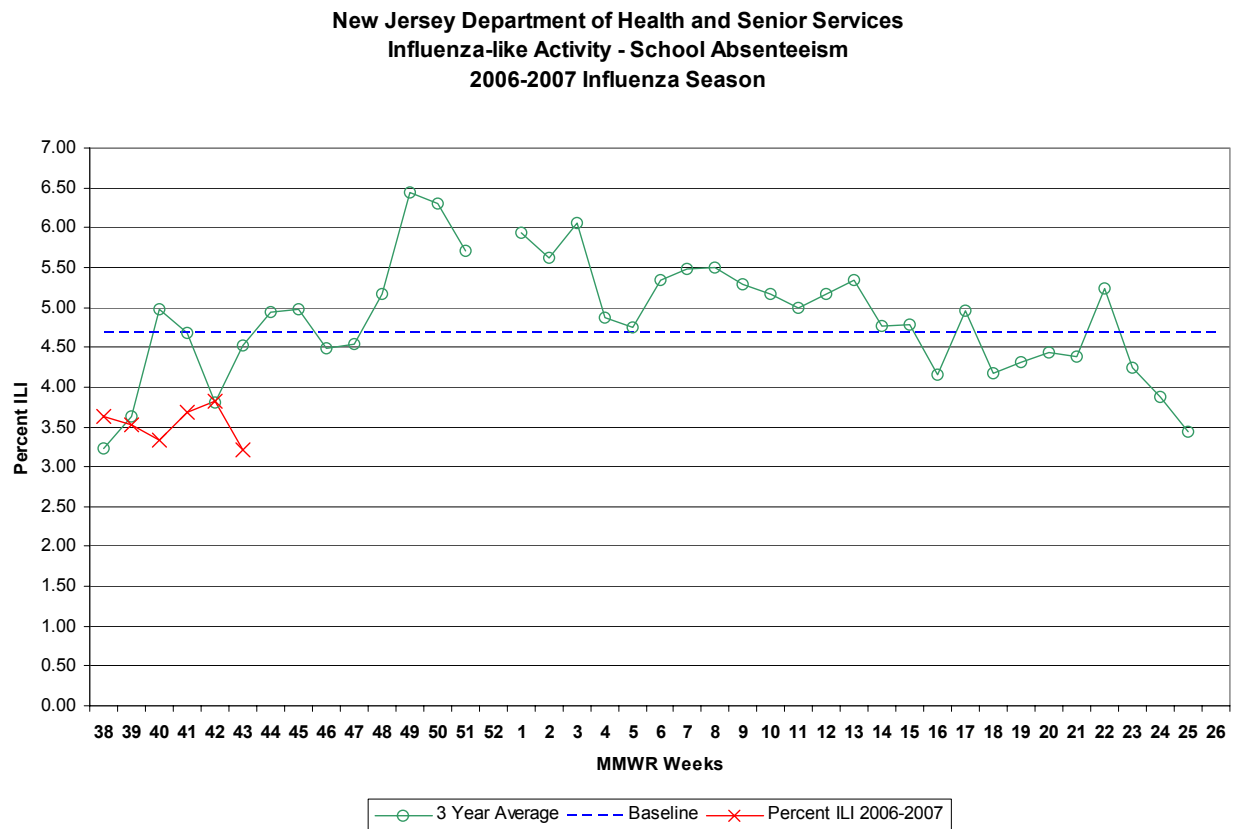
During week 43, 0.93% ILI was reported statewide from long term care facilities. This is a decrease over the previous week (1.01%). The percent ILI for each county ranged from 0.62% to 2.39%. No reports regarding ILI/respiratory outbreaks in communal living facilities were received. The percent ILI for this same week last year was 0.85% in long-term care facilities. The percent ILI for the central west (1.06%) and northeast (1.49%) public health region were above state baseline (1.05%).

New Jersey Department of Health and Senior Services
Influenza-like Activity - Nursing Homes
2006-2007 Influenza Season



School Absenteeism

During week 43, schools reported 3.22% absenteeism. This is a decrease over the previous week (3.82%). The percent ILI for each county ranged from 0.87% to 7.56%. The percent absent for this same week last year was 4.77%. The percent ILI for the northwest (5.59%) and northeast (6.47%) public health region were above state baseline (4.68%).



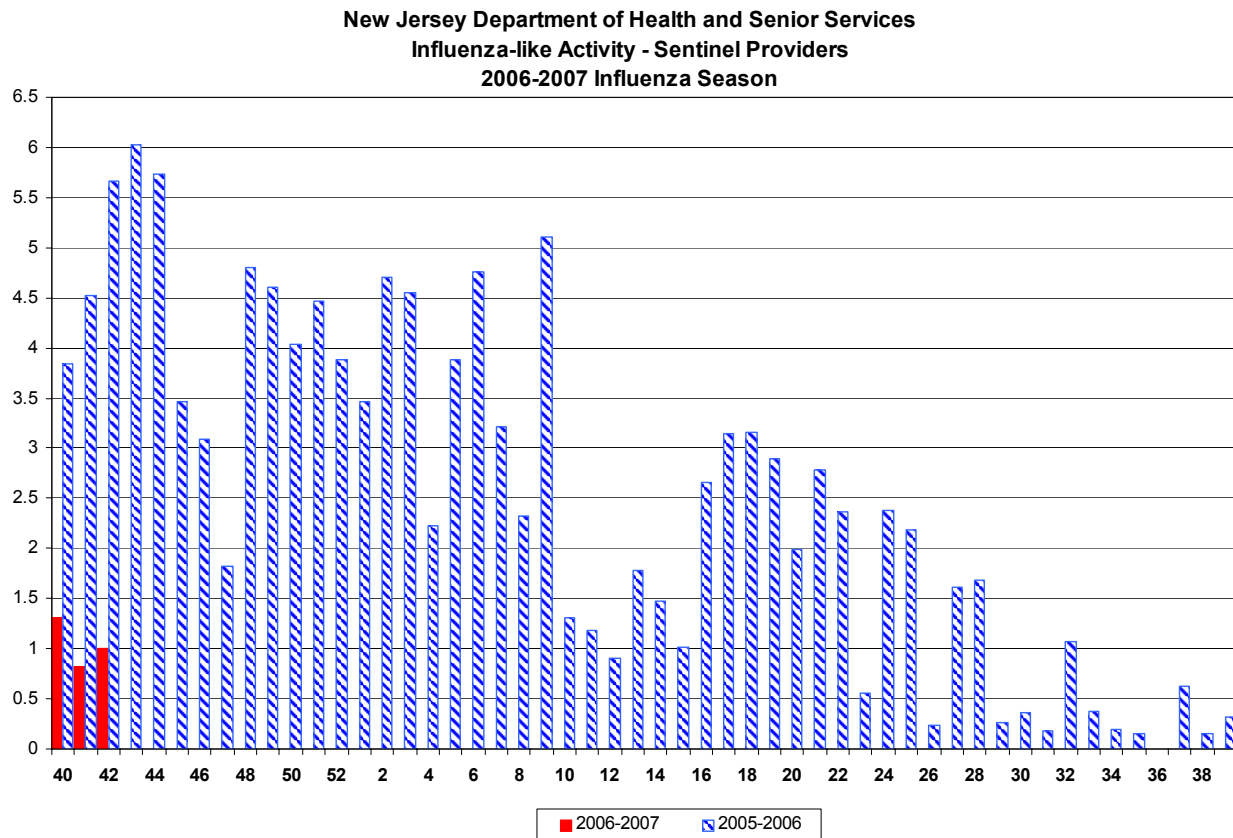
Sentinel Provider Surveillance

No reports have been received for week 43.

UPDATE

During week 42, 1.00% of sentinel provider patient visits were due to ILI. These data reflects reports from eight (19%) of the enrolled sentinel providers.

During week 41, 0.82% of sentinel provider patient visits were due to ILI. These data reflects reports from ten (23%) of the enrolled sentinel providers.



Pediatric Influenza Surveillance

To date, NJDHSS has received no reports of pediatric illness or death associated with influenza that met the case definition.

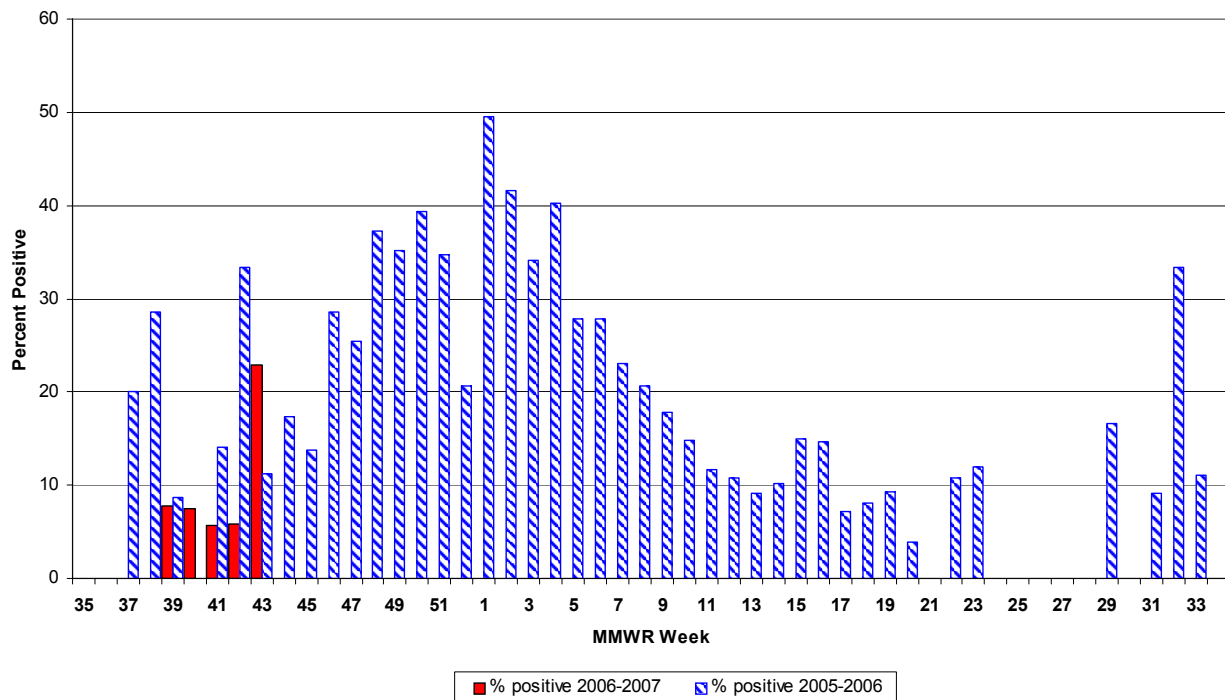
122 City Mortality Report

During week 42, 2.99% of all deaths reported by the vital statistics offices in 6 New Jersey cities (i.e., Camden, Elizabeth, Jersey City, Newark, Paterson, Trenton) were due to pneumonia or influenza. This was a decrease over the previous week (6.37%). The percentage of death due to pneumonia or influenza for this same week last year was 3.65%.

RSV Reports

During week 43, 23.00% of all RSV samples tested were positive. This was an increase over the previous week 5.83%. The percent of samples positive RSV for this same week last year was 11.21%. Positive samples were reported in the northeast (22.00%), northwest (31.00%), central west (26.00%), central east (6.67%), and south (33.33%) public health regions.

**New Jersey Department of Health and Senior Services
Respiratory Syncytial Virus (RSV) Surveillance by Week
2006-2007 Influenza Season**



Additional Information

During week 43, Philadelphia Department of Health reported their first positive influenza A test via PCR.

For additional information regarding influenza surveillance please visit the following websites.

<http://nj.gov/health/flu/surveillance.shtml>

<http://www.cdc.gov/flu/>

| | Long Term Care | | | Schools | | | Hospital Emergency Department | | | RSV Tests | |
|---------------------|----------------|--------------------|-------------|------------|--------------------|-------------|-------------------------------------|--------------------|-------------|------------|-----------------------------|
| County | # Enrolled | # Reports Rec'd | % ILI | # Enrolled | # Reports Rec'd | % Absent | # Enrolled | # Reports Rec'd | % ILI | # Positive | Total Tests Performed |
| ATLANTIC | 5 | 2 | 1.02 | 16 | 3 | 5.96 | 4 | 4 | 1.02 | 0 | 0 |
| BERGEN | 3 | 0 | 0.00 | 11 | 0 | 0.00 | 6 | 0 | 0.00 | 0 | 0 |
| BURLINGTON | 5 | 5 | 0.30 | 91 | 80 | 3.77 | 3 | 2 | 2.93 | 3 | 7 |
| CAMDEN | 7 | 5 | 1.32 | 16 | 4 | 3.90 | 7 | 5 | 3.59 | 0 | 0 |
| CAPE MAY | 5 | 2 | 1.79 | 11 | 10 | 5.07 | 1 | 1 | 5.43 | 0 | 0 |
| CUMBERLAND | 4 | 2 | 1.39 | 10 | 2 | 1.74 | 3 | 3 | 4.39 | 0 | 2 |
| ESSEX | 14 | 6 | 1.67 | 31 | 9 | 3.08 | 11 | 9 | 4.50 | 1 | 31 |
| GLOUCESTER | 4 | 1 | 0.00 | 5 | 0 | 0.00 | 2 | 0 | 0.00 | 0 | 0 |
| HUDSON | 10 | 1 | 0.57 | 75 | 37 | 7.09 | 7 | 4 | 5.51 | 10 | 19 |
| HUNTERDON | 4 | 4 | 2.26 | 8 | 8 | 2.10 | 1 | 1 | 2.47 | 0 | 0 |
| MERCER | 8 | 7 | 0.49 | 12 | 10 | 2.11 | 5 | 4 | 2.39 | 9 | 35 |
| MIDDLESEX | 2 | 0 | 0.00 | 3 | 0 | 0.00 | 5 | 0 | 0.00 | 0 | 0 |
| MONMOUTH | 5 | 2 | 0.65 | 25 | 14 | 6.53 | 5 | 4 | 2.16 | 0 | 11 |
| MORRIS | 8 | 4 | 0.00 | 14 | 13 | 1.77 | 4 | 2 | 1.03 | 3 | 10 |
| OCEAN | 7 | 1 | 0.00 | 6 | 6 | 5.38 | 4 | 4 | 5.52 | 0 | 0 |
| PASSAIC | 7 | 2 | 0.62 | 22 | 7 | 3.75 | 6 | 3 | 1.66 | 0 | 0 |
| SALEM | 4 | 2 | 0.00 | 5 | 0 | 0.00 | 1 | 0 | 0.00 | 0 | 0 |
| SOMERSET | 5 | 4 | 0.89 | 46 | 23 | 2.81 | 2 | 2 | 15.92 | 0 | 0 |
| SUSSEX | 4 | 3 | 0.90 | 19 | 18 | 6.54 | 2 | 2 | 3.85 | 1 | 2 |
| UNION | 4 | 1 | 0.00 | 69 | 46 | 0.87 | 5 | 4 | 3.35 | 1 | 4 |
| UNKNOWN | 0 | 0 | 0.00 | 0 | 0 | 0.00 | 0 | 0 | 0.00 | 0 | 0 |
| WARREN | 7 | 7 | 2.39 | 46 | 20 | 7.56 | 2 | 0 | 0.00 | 0 | 1 |
| NW Region | 26 | 16 | 0.81 | 101 | 58 | 5.59 | 14 | 7 | 1.72 | 4 | 13 |
| NE Region | 27 | 7 | 1.49 | 117 | 46 | 6.47 | 24 | 13 | 4.77 | 11 | 50 |
| CW Region | 17 | 15 | 1.06 | 66 | 41 | 2.49 | 8 | 7 | 6.29 | 9 | 35 |
| CE Region | 18 | 4 | 0.38 | 103 | 66 | 1.38 | 19 | 12 | 3.70 | 1 | 15 |
| South Region | 34 | 19 | 0.87 | 154 | 99 | 4.07 | 21 | 15 | 2.99 | 3 | 9 |
| State Total | 122 | 61 | 0.93 | 541 | 310 | 3.22 | 86 | 54 | 3.85 | 28 | 122 |