

New Jersey Department of Health and Senior Services
Communicable Disease Service
Influenza Activity Summary
Week Ending January 12, 2008 (MMWR Week 2)

Influenza Activity Level: **REGIONAL**

NOTE: Three of three reporting parameters are above state baseline. Additionally, ten counties had 2 of 3 parameters above baseline as well as several laboratory confirmed cases in the previous 3 weeks for these same counties.

No Activity- At least 2 of 3 parameters at or below state baseline **AND** no lab confirmed cases

Sporadic – At least 2 of 3 parameters above state baseline **AND** confirmed laboratory cases anywhere in the state within previous 3 weeks **OR** at least one laboratory confirmed outbreak in an institution anywhere in the state

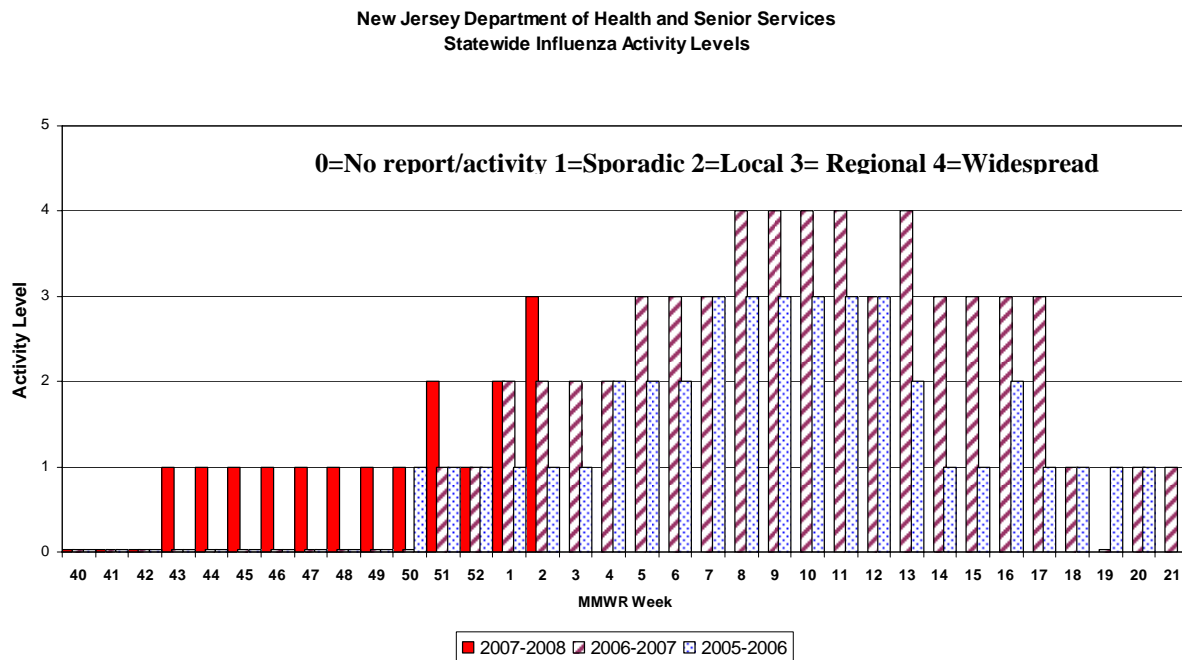
Local – At least 2 or 3 parameters above state baseline in a single county **AND** confirmed laboratory cases from that same county within the previous 3 weeks (other counties may be above baseline without lab confirmed cases) **OR** confirmed outbreaks in 2 or more institutions in a single county

Regional – At least 2 of 3 parameters above state baseline in ≥ 2 but ≤ 10 counties **AND** laboratory confirmed cases from these same counties in past 3 weeks **OR** confirmed outbreaks institutions in ≥ 2 but ≤ 10 counties

Widespread – At least 2 of 3 parameters above state baseline in > 10 counties **OR** institutional outbreaks in > 10 counties **AND** lab confirmed influenza cases in previous 3 weeks.

Parameter = School, emergency department, or long term care weekly surveillance data

Baseline is calculated by taking the average of statewide percentages of ILI for a 4 year (2004, 2005, 2006, 2007) period during months when influenza is less likely to be circulating (May-August). Weeks in which less than 4 counties reported were not included in the calculation.



Regional Data

REGIONAL – NE and CE

LOCAL - NW

SPORADIC – CW and SOUTH

Public Health Regions

NW Region (Morris, Passaic, Sussex, Warren)

NE Region (Bergen, Essex, Hudson)

CW Region (Hunterdon, Mercer, Somerset)

CE Region (Middlesex, Monmouth, Ocean, Union)

South Region (Atlantic, Burlington, Camden, Cape May, Cumberland, Gloucester, Salem)

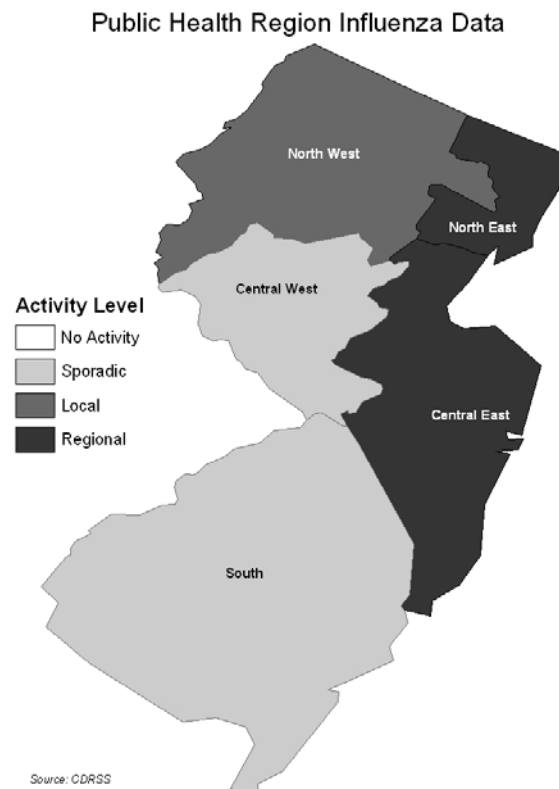
No Activity- At least 2 of 3 parameters at or below state baseline **AND** no lab confirmed cases in the public health region

Sporadic – At least 2 of 3 parameters above state baseline **AND** confirmed laboratory cases anywhere in the public health region **OR** at least one laboratory confirmed outbreak in an institution anywhere in the public health region

Local – At least 2 or 3 parameters above state baseline in a single county of a public health region **AND** confirmed laboratory cases from that same county within the previous 3 weeks (other counties may be above baseline without lab confirmed cases) **OR** confirmed outbreaks in 2 or more institutions in a single county of a public health region

Regional – At least 2 of 3 parameters above state baseline in at least half of counties of public health region **AND** laboratory confirmed cases from these same counties in past 3 weeks **OR** confirmed outbreaks institutions in at least half of counties of public health region counties

Widespread – Not used for public health region data



Laboratory Surveillance

As of week 2, 22 samples have been found to be positive by viral culture (8- AH1, 5-AH3 and 9-B). Rapid and culture results by county are displayed below.

County	Week 40 to Week 2							Weeks 52, 1, 2						
	Rapid*			Culture*				Rapid*			Culture*			
	A	B	A/B	A H1	A H3	A UNK	B	A	B	A/B	A H1	A H3	A UNK	B
Atlantic County														
Bergen County	5	2		3			2	2	1					1
Burlington County	9							4						
Camden County														
Cape May County														
Cumberland County														
Essex County	4	5	7					2	5	3				
Gloucester County			**											
Hudson County				2	1		1							1
Hunterdon County				1			1				1			
Mercer County	9	6		1	1		1	4	2		1	1		1
Middlesex County				2			1				2			
Monmouth County	2				1							1		
Morris County														
Ocean County														
Passaic County														
Salem County														
Somerset County			1	1	1					1	1	1		
Sussex County	5	2						5	1					
Union County	1			1	1		3							
Warren County	1							1						
Unknown				1							1			
State Total	36	15	8	12	5		9	18	9	4	6	3		3

*Rapid data is acquired from facilities reporting rapid influenza tests via NREVSS or CDRSS ILI module. Culture results are obtained via PHEL, hospital viral culture laboratories or commercial laboratories.

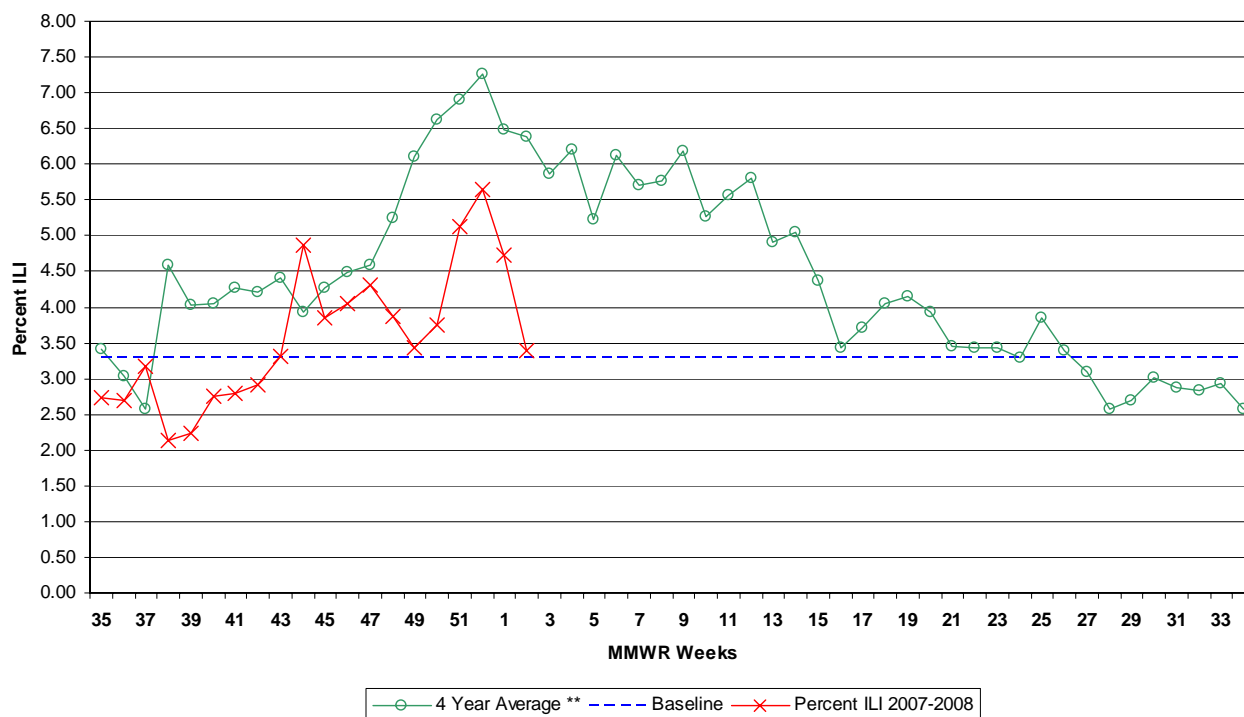
** Three rapid A/B were reported for Gloucester County during week 1. These should have been reported under Essex County.

Influenza-like Illness (ILI) Surveillance*

Emergency Departments

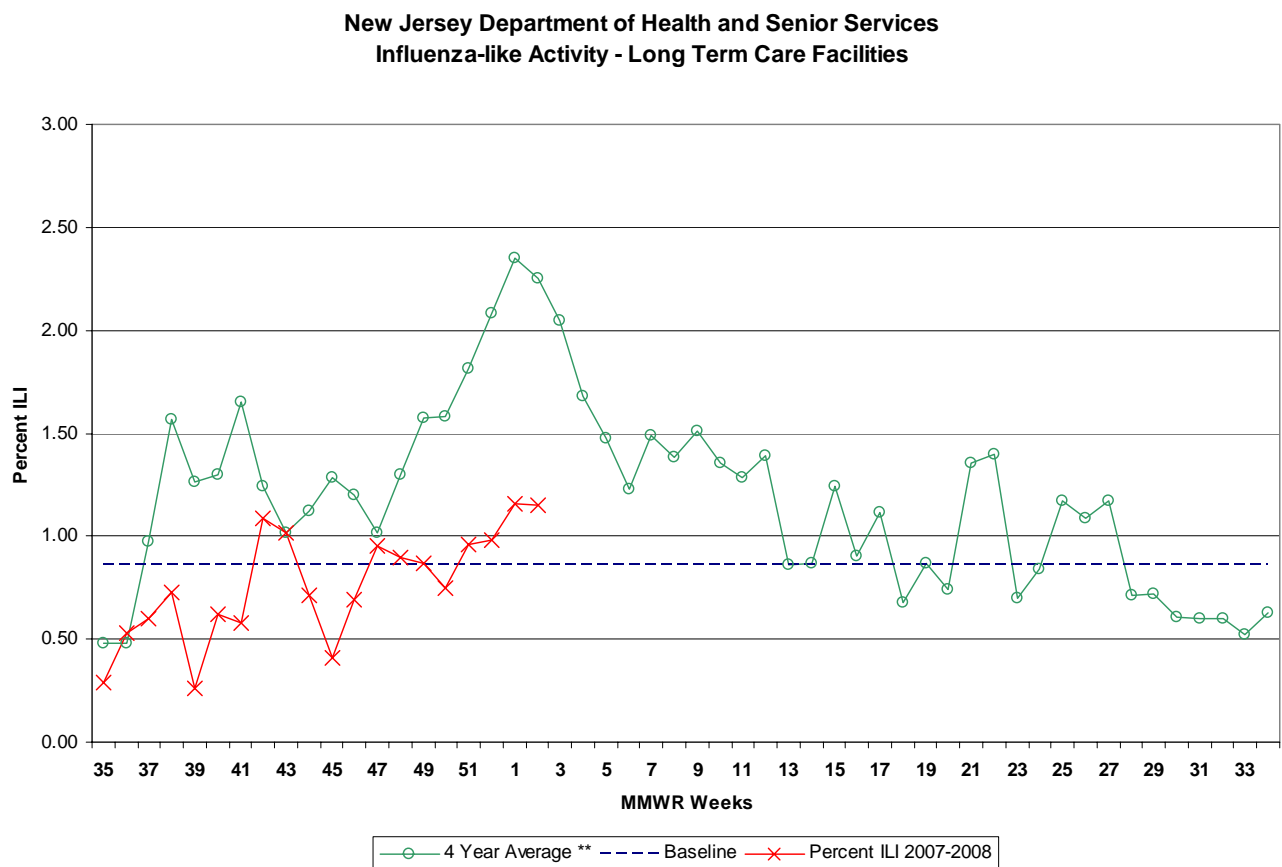
During week 2, 3.40% ILI was reported statewide from emergency departments. This is a decrease over the previous week (4.73%). The percent ILI for each county ranged from 0.00 to 14.43%. The percent ILI for this same week last year was 5.41% in emergency departments. The percent ILI for the northwest (3.35%) and central east (4.81%) public health regions were above state baseline (3.30%).

**New Jersey Department of Health and Senior Services
Influenza-like Activity - Emergency Departments**



Long-term Care Facilities

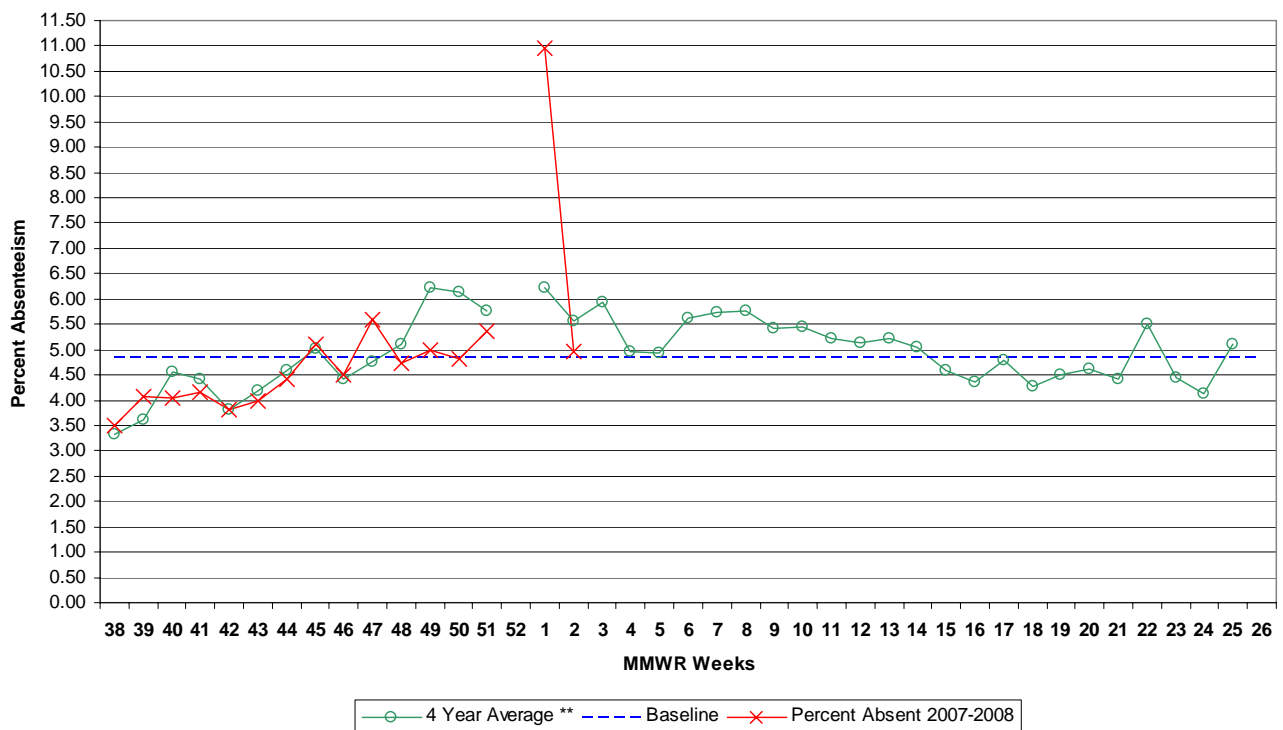
During week 2, 1.15% ILI was reported statewide from long term care facilities. This is a decrease over the previous week (1.16%). The percent ILI for each county ranged from 0.00% to 3.43%. The percent ILI for this same week last year was 1.12% in long-term care facilities. The percent ILI for the northwest (1.08%), northeast (1.75%), central east (1.45%) and south (1.44%) public health regions were above state baseline (0.86%). No reports of ILI/respiratory outbreaks in communal living facilities were received in week 2.



School Absenteeism

During week 2, schools reported 4.96% absenteeism. This is a decrease over the previous week (10.95%). The percent ILI for each county ranged from 2.19 – 8.40%. The percent absent for this same week last year was 5.37%. The percent ILI for the northeast (5.34%), central east (5.68%) and south (5.38%) public health regions were above state baseline (4.85%). **NOTE: Most schools were on holiday break for week 1, information reported was from 19 schools.**

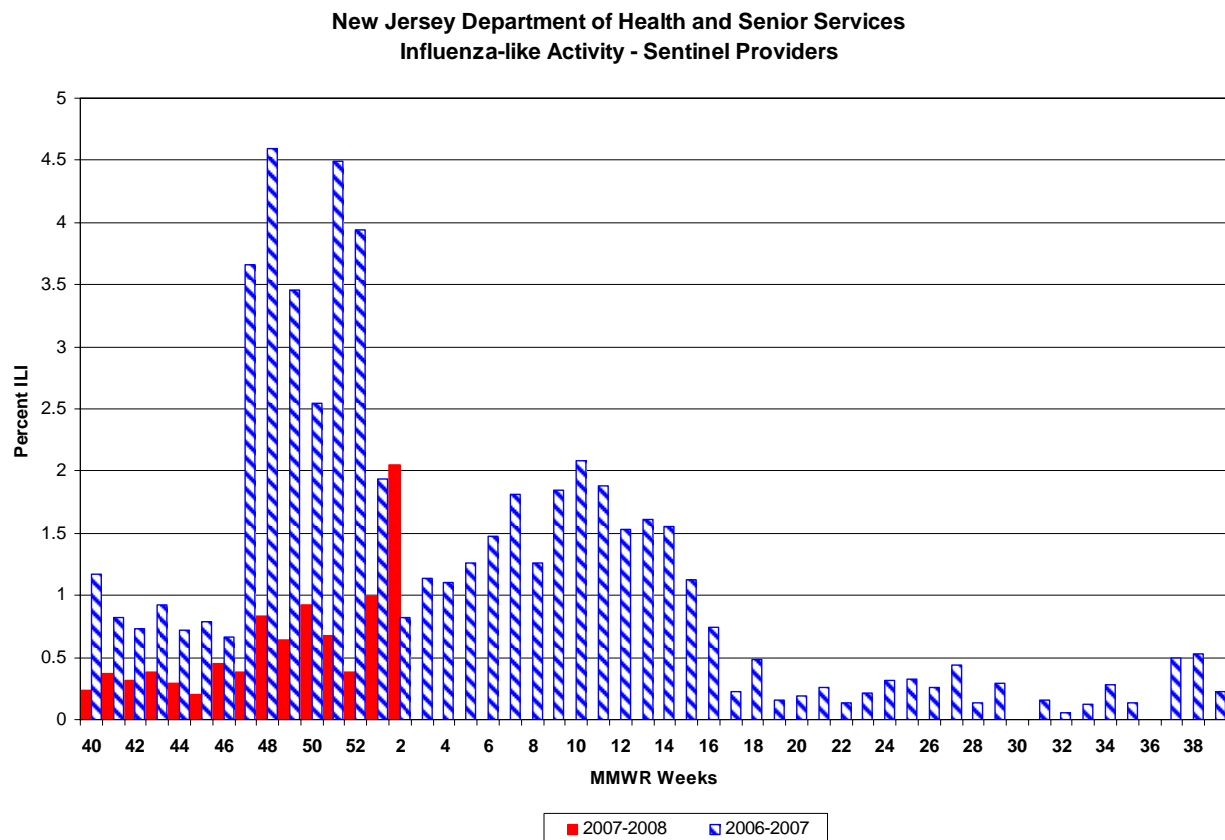
**New Jersey Department of Health and Senior Services
Influenza-like Activity - School Absenteeism**



Sentinel Provider Surveillance

During week 2, 2.05% of sentinel provider patient visits were due to ILI. These data reflect reports from four (10%) of the enrolled sentinel providers.

During week 1, 0.99% of sentinel provider patient visits were due to ILI. These data reflect reports from eight (20%) of the enrolled sentinel providers.



Pediatric Influenza Surveillance

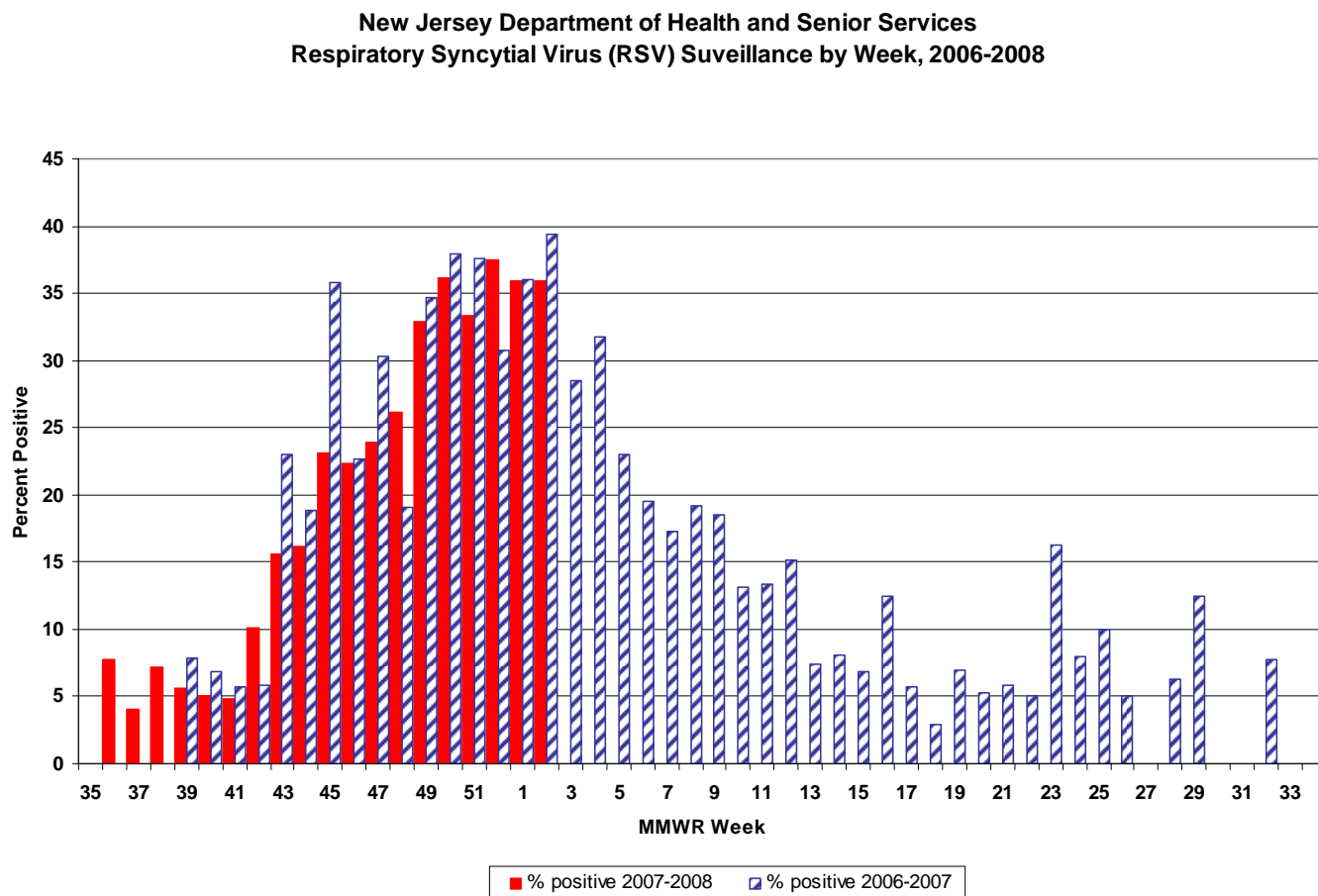
To date, NJDHSS has received 9 reports of pediatric illness. Seven of these cases have met the case definition for pediatric illness or death associated with influenza

122 City Mortality Report

During week 1, 14.19% of all deaths reported by the vital statistics offices in 6 New Jersey cities (i.e., Camden, Elizabeth, Jersey City, Newark, Paterson, Trenton) were due to pneumonia or influenza. This is an increase as the previous week (1.87%). The percentage of death due to pneumonia or influenza for this same week last year was 3.70%.

RSV Reports

During week 2, 35.86% of all RSV samples tested were positive. This was a decrease over the previous week 35.93%. The percent of samples positive for RSV for this same week last year was 39.43%.



Additional Information

For additional information regarding influenza surveillance please visit the following websites.

<http://nj.gov/health/flu/surveillance.shtml>

<http://www.cdc.gov/flu/>

* Baseline is calculated by taking the average of statewide percentages of ILI for a 4 year (2004, 2005, 2006, 2007) period during months when influenza is less likely to be circulating (May-August). Weeks in which less than 4 counties reported were not included in the calculation.

**Four year average is an average of the 2003-2004, 2004-2005, 2005-2006, 2006-2007 influenza seasons.

	Long Term Care			Schools			Hospital Emergency Department			RSV Tests	
County	# Enrolled	# Reports Rec'd	% ILI	# Enrolled	# Reports Rec'd	% Absent	# Enrolled	# Reports Rec'd	% ILI	# Positive	Total Tests Performed
ATLANTIC	5	2	3.43	17	4	7.32	4	4	2.07	17	51
BERGEN	3	0	0.00	14	0	0.00	6	0	0.00	0	0
BURLINGTON	6	3	0.00	104	51	4.86	3	3	2.31	20	46
CAMDEN	7	2	0.41	17	2	4.19	7	4	0.74	0	0
CAPE MAY	5	4	2.30	11	11	4.93	1	1	14.43	0	0
CUMBERLAND	4	2	1.96	18	10	8.40	3	3	5.41	6	23
ESSEX	14	1	3.23	31	6	2.19	11	4	2.90	28	89
GLOUCESTER	2	2	1.25	5	2	3.52	2	2	2.85	0	0
HUDSON	10	2	1.63	87	66	5.47	8	1	6.45	10	17
HUNTERDON	4	4	0.00	8	8	3.41	1	1	3.45	4	11
MERCER	10	5	0.00	24	18	3.83	5	2	1.69	37	99
MIDDLESEX	2	1	1.96	46	12	5.58	5	0	0.00	4	23
MONMOUTH	6	2	2.01	25	15	7.40	5	3	0.00	2	10
MORRIS	11	1	1.90	14	12	2.84	4	1	0.54	15	29
OCEAN	6	0	0.00	27	0	0.00	4	0	0.00	2	6
PASSAIC	8	4	0.98	22	6	5.66	6	1	2.48	0	0
SALEM	4	3	0.71	5	0	0.00	1	1	0.00	0	0
SOMERSET	5	3	0.83	62	24	3.25	2	2	3.43	2	7
SUSSEX	5	4	0.86	24	23	5.25	2	2	6.56	6	19
UNION	4	1	0.88	118	35	4.91	5	5	7.99	8	19
UNKNOWN	0	0	0.00	0	0	0.00	0	0	0.00	0	0
WARREN	7	4	1.44	21	13	3.66	2	1	8.96	0	0
NW Region	31	13	1.08	81	54	4.59	14	5	3.35	21	48
NE Region	27	3	1.75	132	72	5.34	25	5	3.10	38	106
CW Region	19	12	0.25	94	50	3.52	8	5	2.65	43	117
CE Region	18	4	1.45	216	62	5.68	19	8	4.81	16	58
South Region	33	18	1.44	177	80	5.38	21	18	3.03	43	120
State Total	128	50	1.15	700	318	4.96	87	41	3.40	161	449