

New Jersey Department of Health and Senior Services
Communicable Disease Service
Influenza Brief
Week Ending July 18, 2009 (MMWR Week 28)

Influenza activity level: **WIDESPREAD**

NOTE: ILI activity is down in all counties. Widespread activity is primarily indicative of confirmatory laboratory results for novel influenza A H1N1 from 20 counties.

New Jersey	% ILI week 28 (range county level)	% ILI week 28 last year	State Baseline*	% ILI previous week 27 same year
Long Term Care Facilities	0.56% (0.00-1.58%)	0.32%	0.69%	0.63%
Schools (absenteeism)	CLOSED	CLOSED	CLOSED	CLOSED
Emergency Departments	3.03% (0.00-11.68)	2.00%	2.60%	3.92%

Influenza Activity Level Public Health Regions*

Region	Counties in Region	Activity Level
NW Region	Morris, Passaic, Sussex, Warren	REGIONAL
NE Region	Bergen, Essex, Hudson	REGIONAL
CW Region	Hunterdon, Mercer, Somerset	REGIONAL
CE Region	Middlesex, Monmouth, Ocean, Union	REGIONAL
South Region	Atlantic, Burlington, Camden, Cape May, Salem, Cumberland, Gloucester	REGIONAL

*See note above

Sentinel Provider Surveillance

During week 28, 2.83% of sentinel provider patient visits were due to ILI. These data reflect reports from eleven (25%) of the enrolled sentinel providers.

During week 27, 2.83% of sentinel provider patient visits were due to ILI. These data reflect reports from eleven (25%) of the enrolled sentinel providers.

* Baseline is calculated by taking the average of statewide percentages of ILI for a 3 year (2006, 2007, 2008) period during months when influenza is less likely to be circulating (May-August).

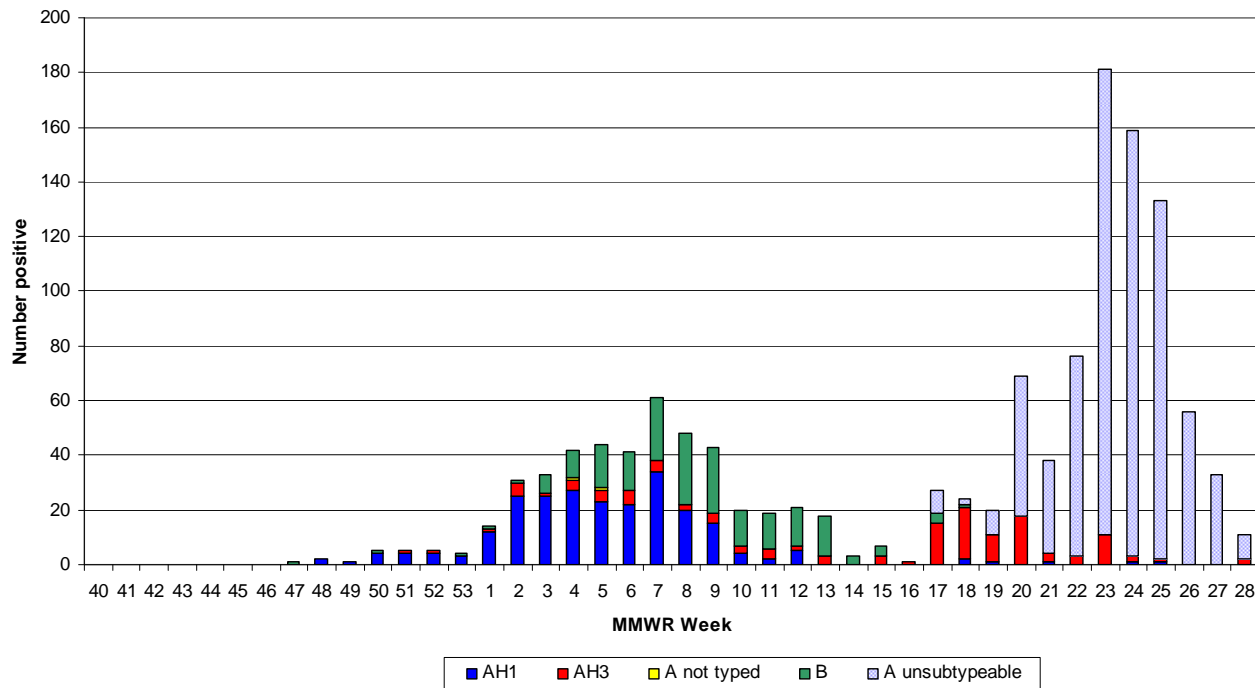
Laboratory

As of week 27, 563 samples were found to be positive by viral culture or PCR for influenza AH1, AH3 and influenza B. Please see graph on next page for weekly distribution.

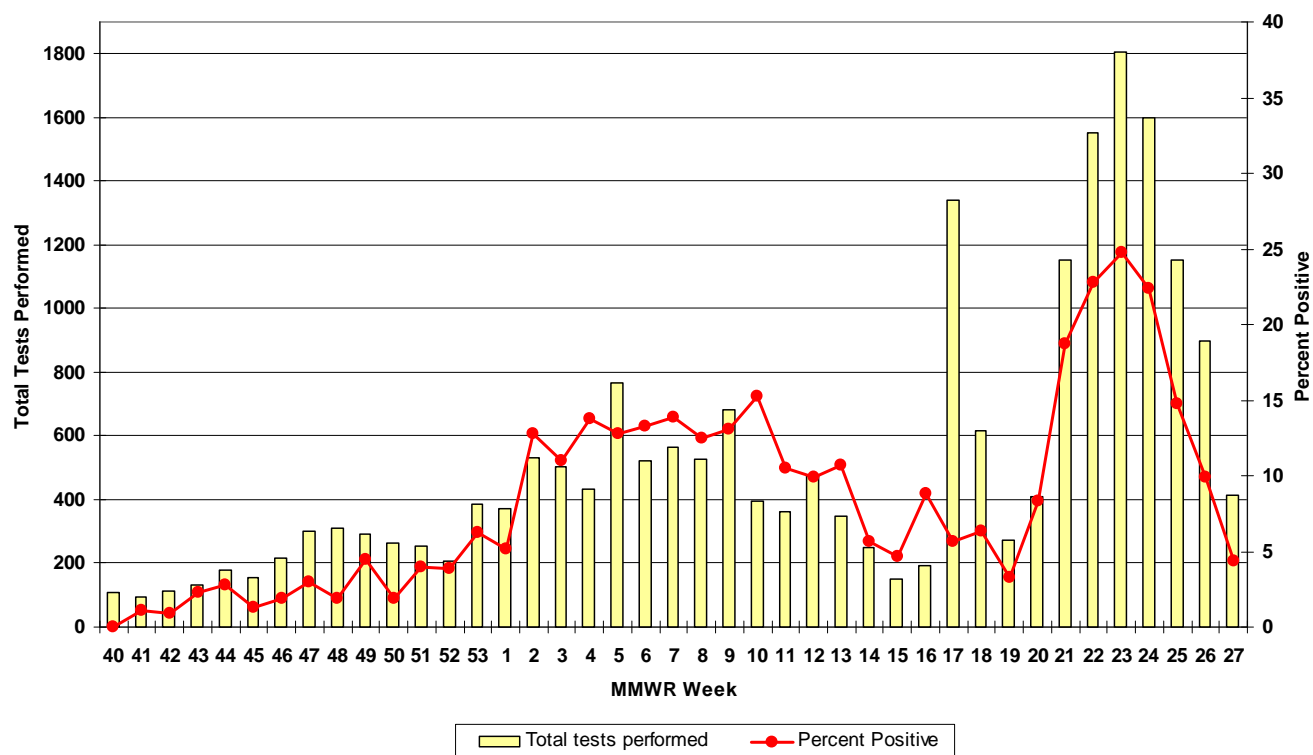
County	Week 40 to Week 27							Week 25, 26, 27						
	Rapid*			Culture*				Rapid*			Culture*			
	A	B	A/B	A H1	A H3	A UNK	B	A	B	A/B	A H1	A H3	A UNK	B
Atlantic County	86	17	0	9	2	0	2	22	0	0	0	1	0	0
Bergen County	202	13	0	11	17	2	7	42	0	0	0	0	0	0
Burlington County	107	24	0	2	0	0	1	15	1	0	0	0	0	0
Camden County	0	0	0	1	0	0	1	0	0	0	0	0	0	0
Cape May County	26	6	0	14	1	0	5	6	0	0	0	0	0	0
Cumberland County	0	0	0	7	1	0	6	0	0	0	0	0	0	0
Essex County	563	65	23	28	20	0	18	25	0	0	0	0	0	0
Gloucester County	0	0	0	5	0	0	13	0	0	0	0	0	0	0
Hudson County	286	12	0	26	19	0	29	48	0	0	1	0	0	0
Hunterdon County	35	0	80	22	8	0	13	0	0	0	0	0	0	0
Mercer County	28	0	0	14	10	0	8	11	0	0	0	0	0	0
Middlesex County	104	4	0	24	15	0	18	8	0	0	0	1	0	0
Monmouth County	58	23	67	13	5	0	8	0	0	0	0	0	0	0
Morris County	0	0	0	18	6	0	16	0	0	0	0	1	0	0
Ocean County	0	0	0	1	5	0	3	0	0	0	0	0	0	0
Passaic County	406	15	0	4	4	0	7	43	0	0	0	0	0	0
Salem County	1	1	0	0	0	0	1	0	0	0	0	0	0	0
Somerset County	0	0	22	15	6	0	12	0	0	0	0	0	0	0
Sussex County	74	22	0	1	1	0	2	17	0	0	0	0	0	0
Union County	266	6	15	19	10	0	21	20	0	0	0	0	0	0
Warren County	51	13	0	1	0	0	0	13	0	0	0	0	0	0
Unknown	0	0	0	3	1	0	1	0	0	0	0	0	0	0
State Total	2293	221	207	238	131	2	192	270	1	0	1	3	0	0

* Baseline is calculated by taking the average of statewide percentages of ILI for a 3 year (2006, 2007, 2008) period during months when influenza is less likely to be circulating (May-August).

Influenza Laboratory Report
Positive Specimens by Week
2008-2009 Influenza Season
 *Culture results to week 15, PCR results week 15 to present

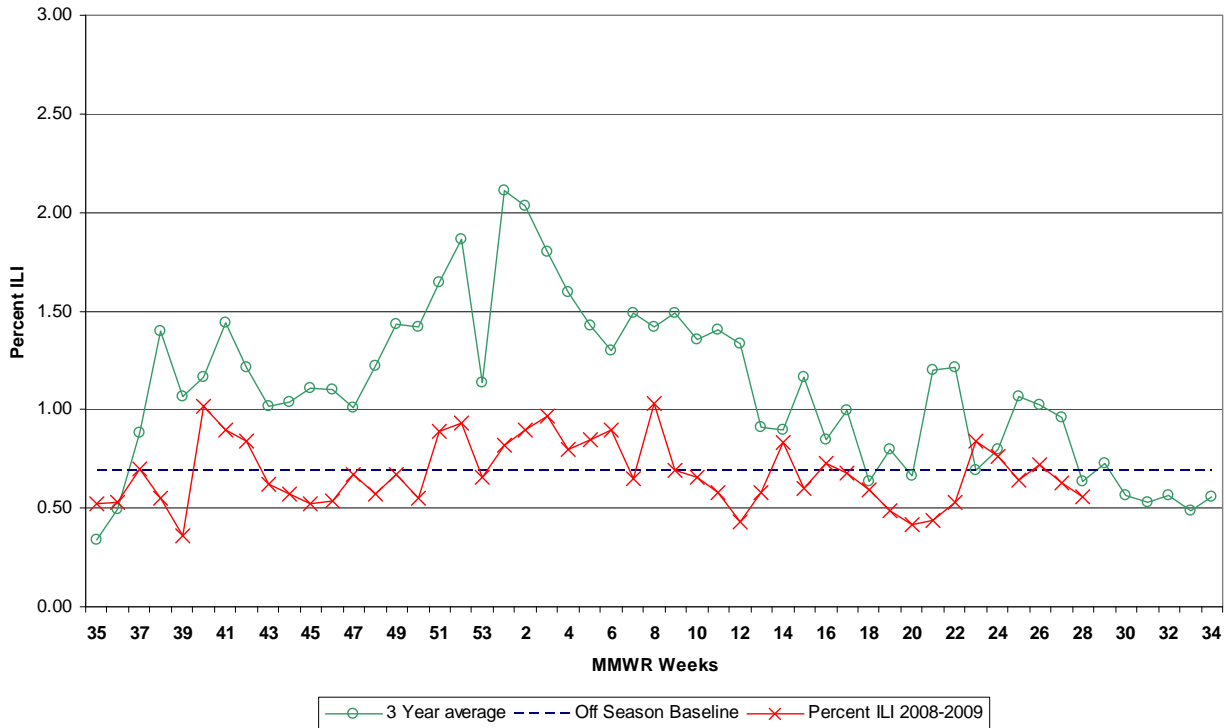


Influenza Rapid Antigen Tests
Total and Percent Positive
2008-2009 Influenza Season

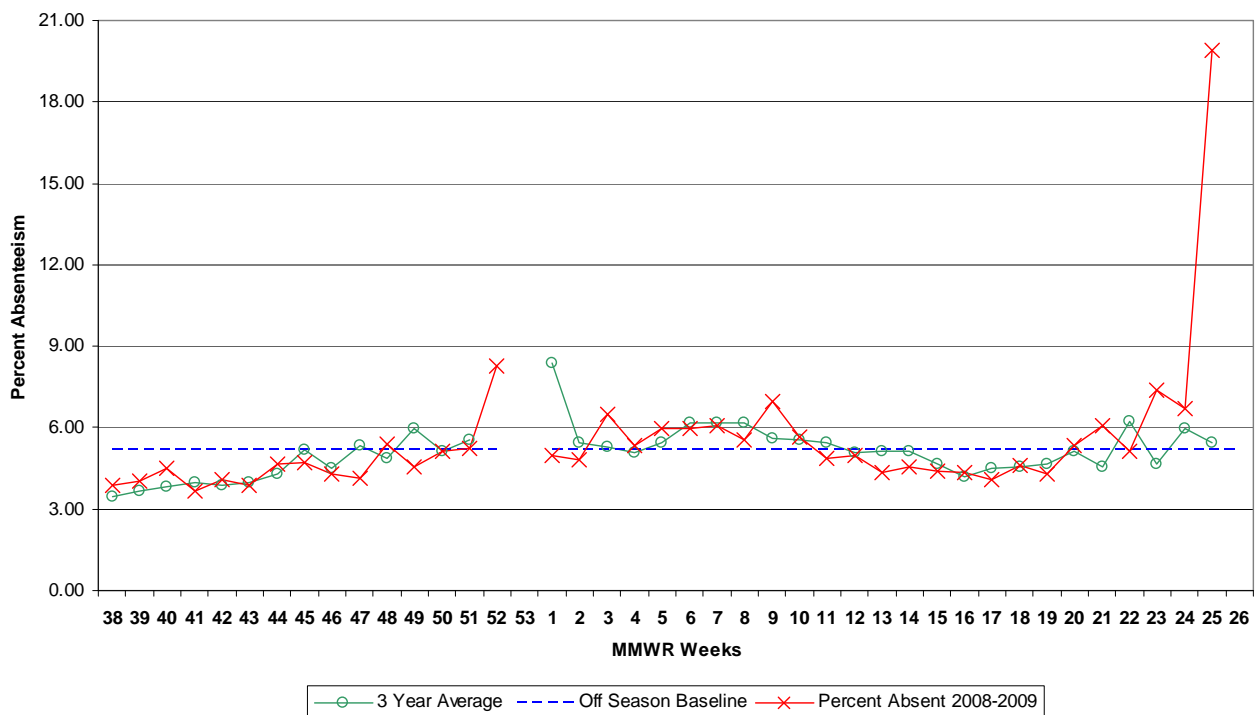


* Baseline is calculated by taking the average of statewide percentages of ILI for a 3 year (2006, 2007, 2008) period during months when influenza is less likely to be circulating (May-August).

**New Jersey Department of Health and Senior Services
Influenza-like Activity - Long Term Care Facilities**



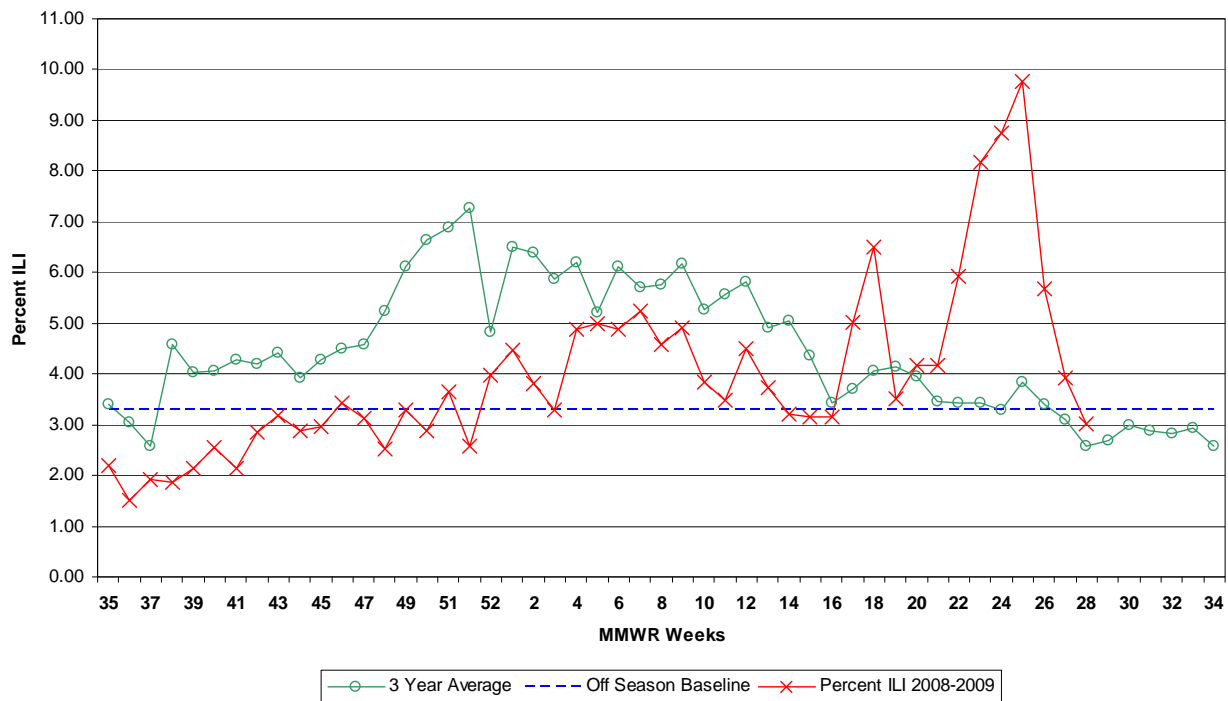
**New Jersey Department of Health and Senior Services
Influenza-like Activity - School Absenteeism**



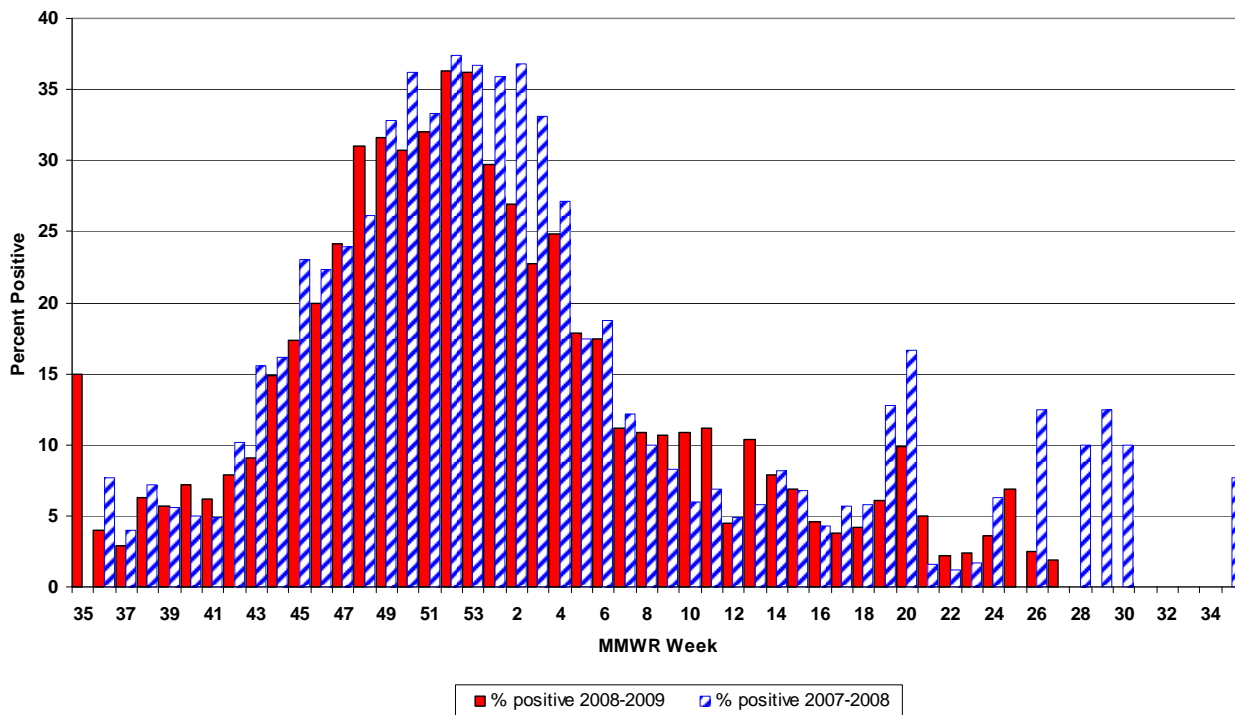
*Reports received from 5 counties.

* Baseline is calculated by taking the average of statewide percentages of ILI for a 3 year (2006, 2007, 2008) period during months when influenza is less likely to be circulating (May-August).

**New Jersey Department of Health and Senior Services
Influenza-like Activity - Emergency Departments**

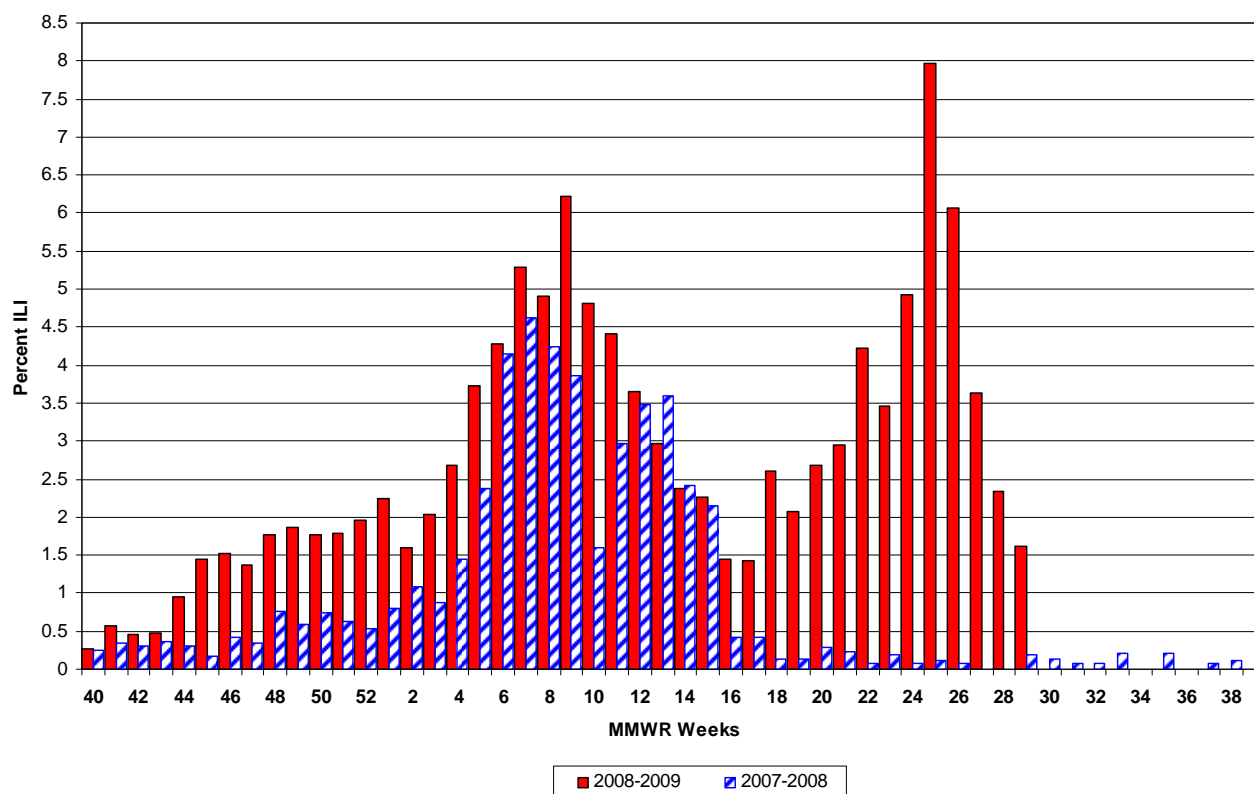


**New Jersey Department of Health and Senior Services
Respiratory Syncytial Virus (RSV) Surveillance by Week, 2006-2008**



* Baseline is calculated by taking the average of statewide percentages of ILI for a 3 year (2006, 2007, 2008) period during months when influenza is less likely to be circulating (May-August).

**New Jersey Department of Health and Senior Services
Influenza-like Activity - Sentinel Providers**



Novel Influenza A H1N1

As of 7/15/09 at 9:15 AM, NJ has identified 895 confirmed and 455 probable who have been infected with the Novel Influenza AH1N1 virus. Cases counts are updated weekly and can be found at <http://nj.gov/health/er/h1n1/>.

* Baseline is calculated by taking the average of statewide percentages of ILI for a 3 year (2006, 2007, 2008) period during months when influenza is less likely to be circulating (May-August).



	Long Term Care			Schools			Hospital Emergency Department		
County	# Enrolled	# Reports Rec'd	% ILI	# Enrolled	# Reports Rec'd	% Absent	# Enrolled	# Reports Rec'd	% ILI
July, 14, 2009 12:00 AM MMRW WEEK 28									
ATLANTIC	4	1	0.60	19	0	0.00	4	4	2.30
BERGEN	3	1	0.00	25	0	0.00	6	5	3.05
BURLINGTON	6	2	0.00	115	0	0.00	3	3	0.92
CAMDEN	7	0	0.00	17	0	0.00	7	7	1.59
CAPE MAY	6	2	0.62	11	0	0.00	1	1	4.19
CUMBERLAND	6	2	1.11	18	0	0.00	3	1	0.00
ESSEX	18	4	1.01	34	0	0.00	11	8	3.19
GLOUCESTER	5	1	0.00	4	0	0.00	2	2	1.16
HUDSON	10	2	1.06	94	0	0.00	6	6	2.68
HUNTERDON	4	4	1.58	8	0	0.00	1	1	0.00
MERCER	11	0	0.00	26	0	0.00	5	4	3.27
MIDDLESEX	2	0	0.00	89	0	0.00	5	4	2.60
MONMOUTH	14	1	0.00	24	0	0.00	5	4	2.62
MORRIS	2	0	0.00	13	0	0.00	4	3	11.68
OCEAN	6	0	0.00	20	0	0.00	4	2	5.11
PASSAIC	9	0	0.00	23	0	0.00	6	0	0.00
SALEM	4	1	0.00	5	0	0.00	1	0	0.00
SOMERSET	6	1	0.78	63	0	0.00	2	0	0.00
SUSSEX	5	5	0.00	22	0	0.00	2	2	0.00
UNION	4	1	0.00	130	0	0.00	5	5	3.23
UNKNOWN	0	0	0.00	1	0	0.00	0	0	0.00
WARREN	8	2	0.00	24	0	0.00	2	1	0.00
NW Region	24	7	0.00	82	0	0.00	14	6	7.75
NE Region	31	7	0.82	153	0	0.00	23	19	3.01
CW Region	21	5	1.40	97	0	0.00	8	5	2.75
CE Region	26	2	0.00	263	0	0.00	19	15	3.26
South Region	38	9	0.54	189	0	0.00	21	18	1.70
State Total	140	30	0.56	784	0	0.00	85	63	3.03