

# HNJ2030 ADVISORY COUNCIL MEETING



May 17, 2022

1:30-3:00pm

Microsoft Teams

# AGENDA



WELCOME



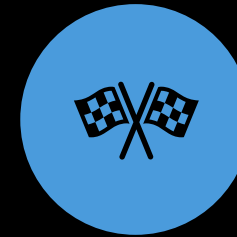
DOH  
PRESENTATION  
RECAP



ACTION TEAMS  
UPDATES



REVISED RUBRIC  
REVIEW



WRAP-UP

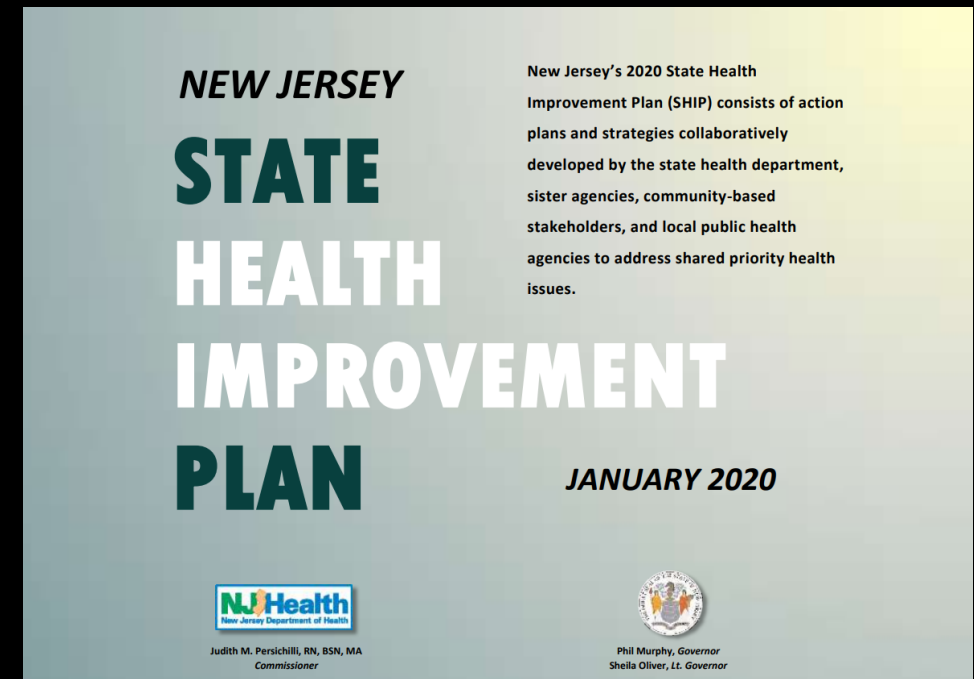
# DOH SENIOR STAFF PRESENTATION

- Recap of presentation and content overview
- DOH senior staff feedback
- Key takeaways or considerations for HNJAC/ HNJ2030



# ACTION TEAM UPDATE

- Information for ACTs:
  - ✓ Community Conversation alignment with Topic Areas
  - ✓ 2020 SHIP status review
    - CHAs/CHIPs alignment – in progress
- Training:
  - 5/12 Problem Solving 101 training for ACT chairs



# TIMELINE FOR 2022

## Quarter 1: Establish Action Teams

✓  
Hold "all ACT" intro meeting  
1/21/22

✓  
ACT-specific meetings  
2/4/22 – 2/18/22

✓  
ACTs: Appoint chairs

✓  
ACTs: Establish meeting schedules  
by 2/25/22

## Quarters 1-2: Create Action Plans

ACTs: Develop action plans  
by 5/20/22

HNJAC: Approve action plans  
6/21/22

HNJCC: Get senior staff approval

## Quarters 3-4: Identify Objectives

ACTs: Select objectives & targets

All: Public comment period?

AC & CC: Adjust/approve objectives & targets

ACTs/CC: Get senior staff approval

CC: Post online = END OF DEVELOPMENT PHASE!

# ACTION PLANS

- ACTs starting to submit draft action plans
- Some teams will not meet the Friday deadline
- Told to send whatever they have by Friday
- Review them as they are submitted?
  - Will allow us to refine the rubric if needed
  - Will allow them to course-correct before it's "too late"

# REVISED RUBRIC REVIEW

- Rubric revised 5/11
  - Review/incorporate feedback from Padlet (Disparities, Data, Trend, Value, Scale)
  - Additional feedback or recommendations?



Access the Padlet interactive board online at: <https://padlet.com/juliawieczorek/hnjac41922>

## Definitions

<b>CRITERIA</b>	<b>DEFINITION</b>
<b>Disparities</b>	Does the problem disproportionately impact populations at increased/higher risk for [condition]?
<b>Trend</b>	Is the problem getting worse or improving?
<b>Severity</b>	The severity of the problem (risk of morbidity/mortality or economic/social cost associated with the problem)
<b>Community Importance</b>	How important is the problem to the community? Is it aligned with the community's priorities? Will there be community buy-in?
<b>Feasibility</b>	How feasible is change related to this problem given financial, social, and environmental conditions (including the availability of evidence-based solutions)
<b>Timing</b>	How significant is the value of immediate intervention vs a delayed response (exp. For long-term or complex threats)
<b>Alignment</b>	Is the solution aligned with one or more of the cross-cutting themes of equity, policy, and resilience?
<b>Data</b>	How good is the quality and availability of the data?
<b>Scale</b>	How geographically widespread is the problem?
<b>Decision levers</b>	What is the extent to which the problem decision-maker(s) is aware of the problem and supportive of efforts to address it?
<b>Root causes</b>	What is the extent to which proposed actions/solutions address root causes driving health disparities?



Criteria	Rubric		
SCORE	1	2	3
<b>Disparities</b>	No or minimal discernible disparities	Moderate presence of disparities	Significant presence of disparities
<b>Trend</b>	Moving in the right direction	Stable	Moving in the wrong direction
<b>Severity</b>	Not life threatening/causes little chronic disease/disability	Causes a moderate amount of morbidity/disability and/or mortality	Causes many deaths and/or many years of chronic disease/disability/years of life lost
<b>Community Importance</b>	Not identified as a priority	Recognized as a problem, but not a priority	Identified as a high priority
<b>Feasibility</b>	Extremely difficult	Moderately feasible	Very feasible
<b>Timing</b> immediate vs delayed response	Low value	Medium value	High value
<b>Alignment with E/P/R</b>	Not at all aligned	Somewhat aligned	Strongly aligned
<b>Data</b>	No data/poor quality data/poor timelines/lack of subpopulations data	Improvements needed in availability and/or quality	Good quality and availability
<b>Scale</b>	Focused in one or a few localized areas of NJ	Present in one or more geographic regions	Present in multiple geographic regions
<b>Decision levers</b>	Decision-maker(s) are unclear	Decision-maker(s) are identified but unengaged	Decision-maker(s) are identified and highly engaged
<b>Root causes</b>	Fails to or poorly addresses social and economic inequality, and/or inequities in political power	Satisfactorily addresses social and economic inequality, and/or inequities in political power	Strongly addresses social and economic inequality, and/or inequities in political power and seeks to build cross-sectoral solutions

The background is a dark teal color filled with a repeating pattern of speech bubbles. Each bubble is a different color (red, purple, yellow, grey) and contains a dark blue question mark. The bubbles are scattered across the entire frame, creating a dense, textured effect.

QUESTIONS?

சென்னை

சென்னை