

# Ann Klein Forensic Center



## Annual Report

# AGENDA

- ❖ ABOUT US
- ❖ AKFC LEADERSHIP
- ❖ SAFETY
- ❖ ADMISSION & COMMITMENT PROCESS
- ❖ PATIENT DEMOGRAPHICS
- ❖ UNIT & SERVICE DESCRIPTION
- ❖ IN-HOUSE MEDICAL SERVICES
- ❖ PATIENT SAFETY GOALS
- ❖ VISITATION
- ❖ PATIENT ADVOCACY

# INTRODUCTION

The Ann Klein Forensic Center is a 199-bed psychiatric hospital serving a designated New Jersey population.

We are a Joint Commission accredited health care facility, one of four psychiatric hospitals governed by the State of New Jersey, Department of Health, Division of Behavioral Health Services.





## **MISSION**

The Ann Klein Forensic Center provides quality, comprehensive, inclusive, and respectful mental health services in a safe environment for individuals who require the highest level of security and treatment.

# 2023 AKFC LEADERSHIP

- ❑ Karen Alloway, Acting Chief Executive Officer
- ❑ Robyn Barkow, Executive Assistant 3
- ❑ Kesha Parkes-Williams, Deputy CEO/Clinical Services
- ❑ Toni-Lynne Calabrese, DO., Medical Director
- ❑ Elizabeth Hogan, MD, Outpatient Psychology
- ❑ Phaniel Addo, RN, BSN, Director of Nursing
- ❑ Susan Moore, RN, QI Director
- ❑ Charles Moore, Employee Relations Director
- ❑ Zuria Ryan, MA, Associate Hospital Administrator
- ❑ Cheryl Manson, Human Resource Director
- ❑ Eileen Lonergan, Business Manager
- ❑ Jasmine Govani, RN, BSN, Risk Manager
- ❑ Michael Beede, MD, Chief of Medicine
- ❑ Rosalie Louis-Jean, RN., BSN, Infection Control Director
- ❑ Curtis Staub, Director of Medical Security – 1<sup>st</sup>
- ❑ Angela Baker, Director of Medical Security – 2<sup>nd</sup>
- ❑ Sandi Ferguson, RN, BSN, M.Ed., Program Specialist 4
- ❑ Silas Odaa, RN, BSN, Program Specialist 4
- ❑ Reed Gladey, LCSW, Program Specialist 4
- ❑ Dianah Savage, RN. Program Specialist 4
- ❑ Terry Goode, MSW, CSW., Director of Social Services
- ❑ Maryrose Mielczarek, OTR/L, Director of Rehab





# SAFETY

In the event of an emergency, our Medical Security Officers will ensure all safety on the unit/patient areas and throughout the facility and will direct visitors on where to safely evacuate or shelter in place.

During an emergency, you will hear the following codes over the loudspeaker signaling to follow Medical Security and Hospital Staff lead. If an incident happens on a unit/patient area, you will be escorted quickly off the unit or patient area.

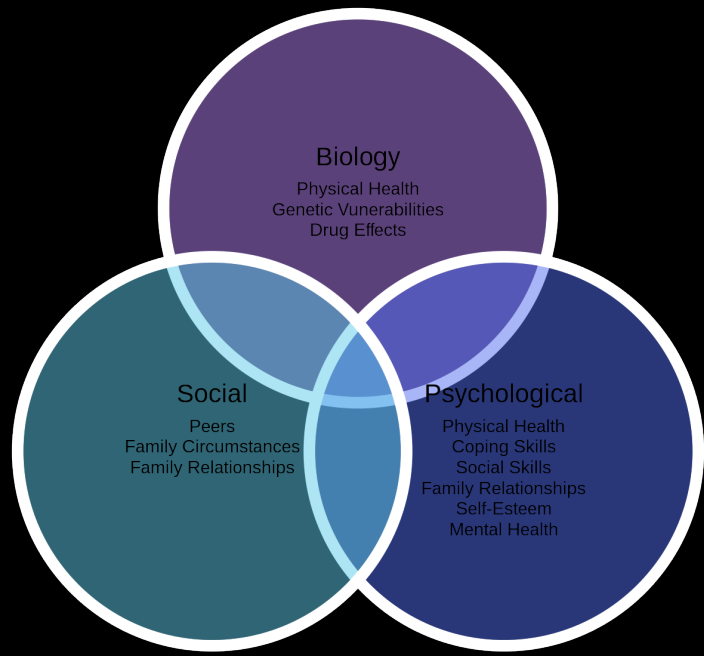
## CODE SYSTEM

- **Red**- Fire
- **Blue**- Medical
- **Gray**- Security/Psychiatric
- **Silver**- Hostage/Weapon
- **Yellow**- Bomb
- **Orange**- Haz Mat

# ADMISSION/COMMITMENT PROCESS

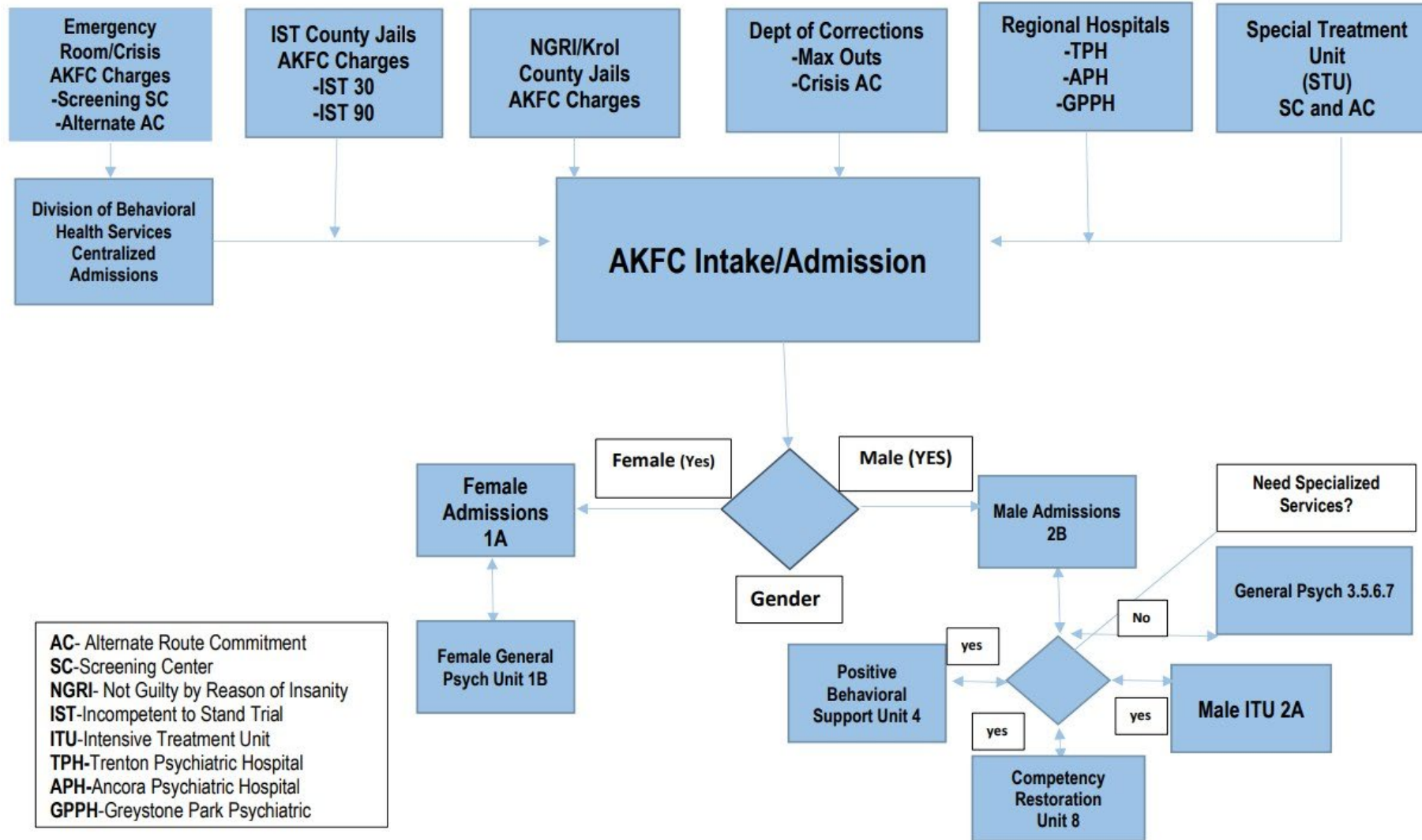
As the State of New Jersey’s only Secured Forensic Hospital, AKFC receives admissions from all law enforcement agencies, including 10 state correctional institutions, 22 county jails and numerous municipal police departments. All individuals referred for admission to the Ann Klein Forensic Center are involuntarily committed. The hospital treats individuals with mental illness who demonstrate behaviors which are injurious to themselves and/or others as defined by the following charges:

- **Murder**
- **Attempted Murder**
- **Manslaughter**
- **Sexual Assault**
- **Criminal Sexual Contact**
- **Robbery - 1st Degree**
- **Aggravated Assault**
- **Aggravated Arson**
- **Kidnapping**



Patients of the Ann Klein Forensic Center must be at least 18 years old. Patients are admitted either by Court Order or Court Commitment, which means that a patient cannot decide to leave at will.

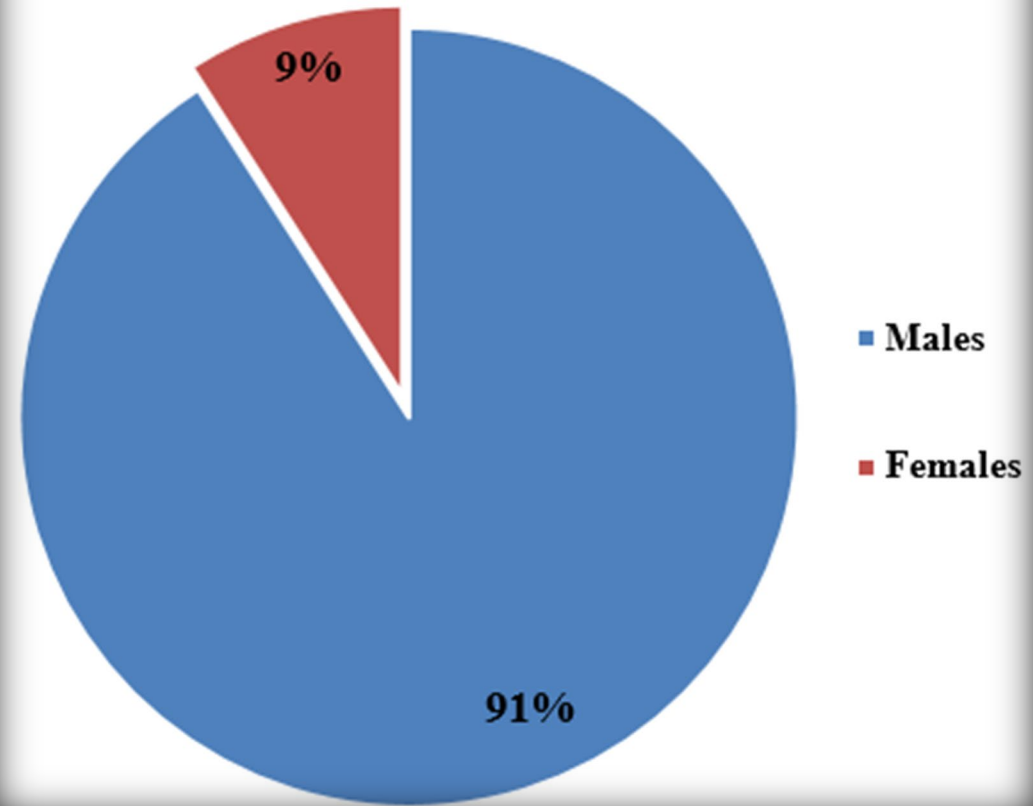
# AKFC Patient Flow

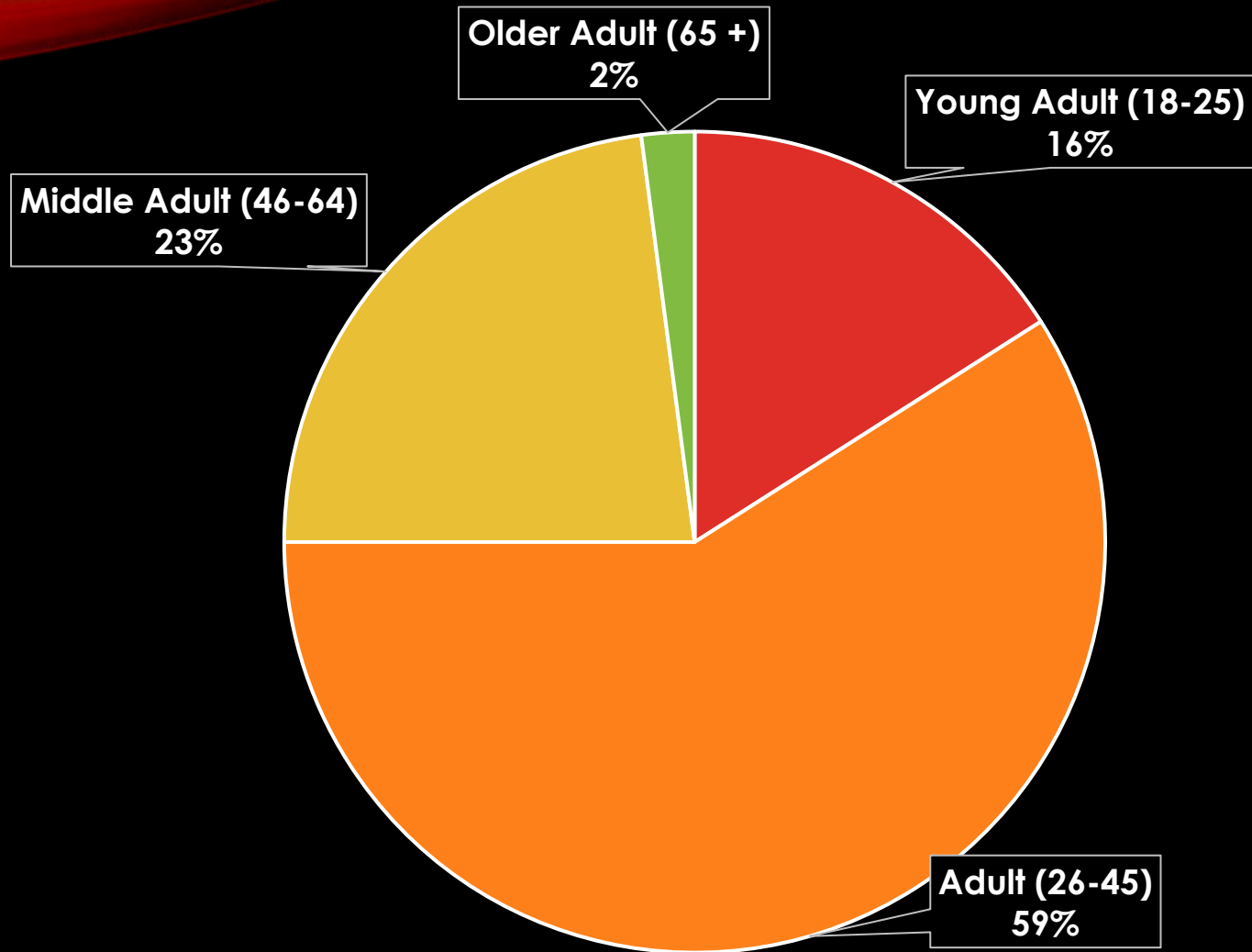




# PATIENT DEMOGRAPHICS

## Admission Gender Statistics



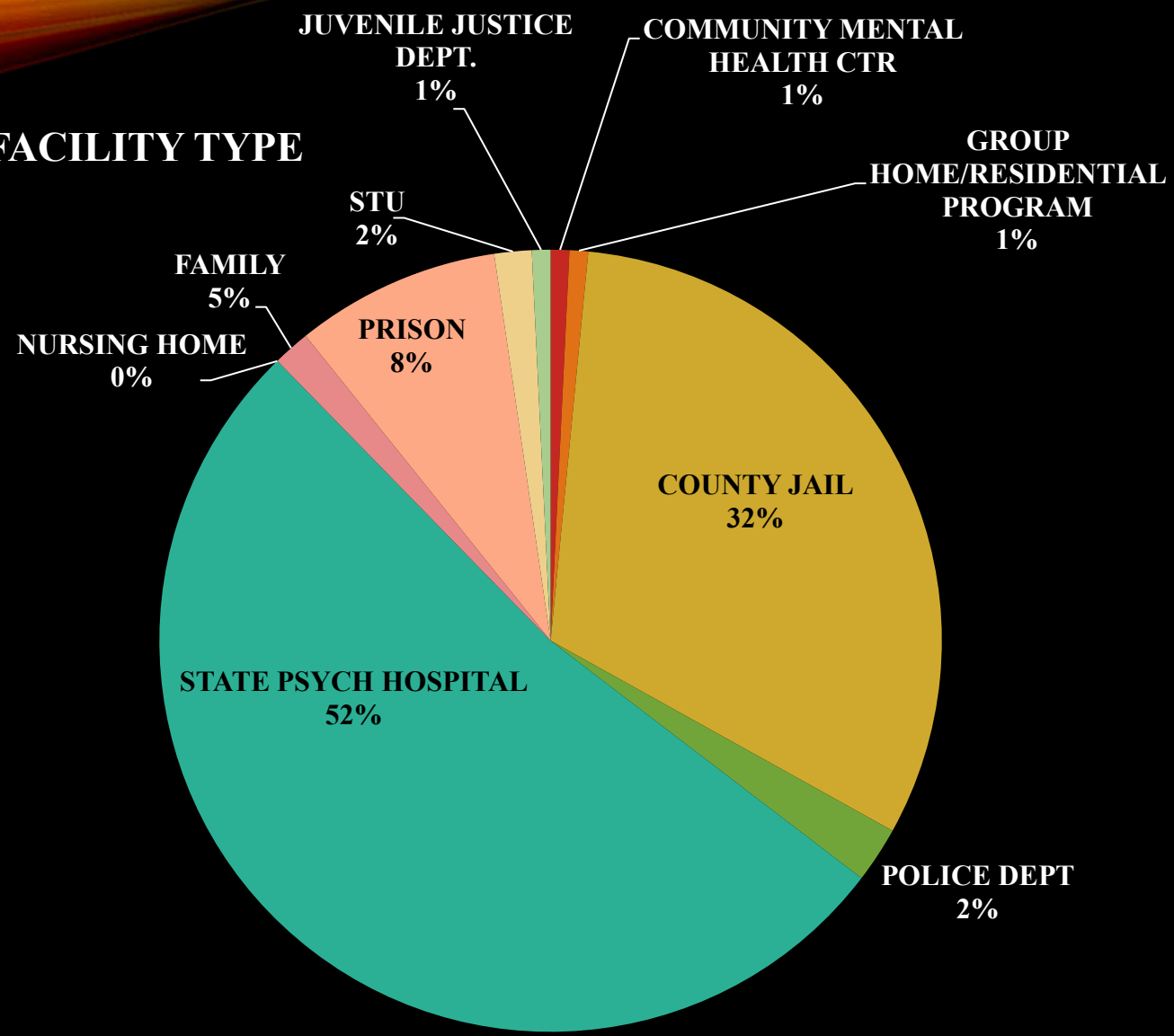


TOTAL	
Young Adult (18-25)	23
Adult (26-45)	85
Middle Adult (46-64)	33
Older Adult (65 +)	3
	144

## Admission Age Groups

■ Young Adult (18-25)   
 ■ Adult (26-45)   
 ■ Middle Adult (46-64)   
 ■ Older Adult (65 +)

# AKFC DISCHARGE BY FACILITY TYPE





# UNITS AND SERVICE DESCRIPTION

Patient Units are organized by level of functioning. There are eight units. Seven units are for males and one unit for females.

- **Unit 1:** Unit 1 is the female unit.
- **Unit 2:** Unit 2 is a divided unit. Unit 2A houses individuals who are in the acute stage of their illness. They may be the most impaired due to their mental illness, requiring 1:1 monitoring and at times seclusion may be prescribed. Patients on this unit typically spend limited time in small groups on the unit. ADL skills are monitored by security staff that encourages patients to shower and dress appropriately. Patients usually have had recent incidents of assault or self-harm.
- **Unit 2b:** Unit 2b is the male admission unit where evaluation and primary treatment begins.

**Units 3 & 4:** These units house chronically mentally ill male patients who can tolerate group settings. Patients on these units frequently have disabling symptoms (e.g., confusion, disorientation, poor memory, poor social skills and limited coping skills). Patients on these units may attend rehabilitation programs full-time and/or benefit from their structured activities. These patients frequently require assistance to complete tasks and require guidance to avoid conflicts with other patients. Patients on unit 4 are involved in the Token Economy Program.

**Units 5, 6, 7 and 8:** These units are for moderate-higher functioning male patients. These units house patients who are able to attend programs full time. Symptoms may have some impact on daily functioning and may impair social skills, but patients are generally able to provide care for personal needs, control their behavior and follow hospital routine.

**Unit 8:** This unit predominantly serves individuals who are participating in the County Jail Based Evaluation Program: Ann Klein Forensic Center provides county jail-based services to the courts with licensed psychologists for the purpose of conducting IST30 Competency to Proceed evaluations in the defendant's county jail placement or in the community. More recently, Ann Klein psychologists are also conducting evaluations of mental state at the time of an alleged criminal offense in county jails and community settings as well, in consideration for a possible Not Guilty by Reason of Insanity defense.

# TREATMENT TEAM

- Psychiatrist
- Registered Nurse
- Social Worker
- Psychologist
- Physician Specialist
- Rehabilitation staff
  - Occupational Therapists
  - Creative Arts Therapists
  - Vocational Rehabilitation
  - Recreation
  - Education
  - Addiction Counselors
- Medical Security Officers



# MEDICAL SECURITY



- Provides safety, security and treatment for patients
- Builds a therapeutic relationship with patients
- Executes behavioral, safety plans and helps patients self-regulate
- May provide 1:1 monitoring for suicidal or aggressive patients
- Ensures a safe environment for patients that supports clinical care
- Manages the Pro-Active Therapeutic Team (PATT)
- Provides perimeter security
- Monitors visitors

# IN-HOUSE MEDICAL SERVICES

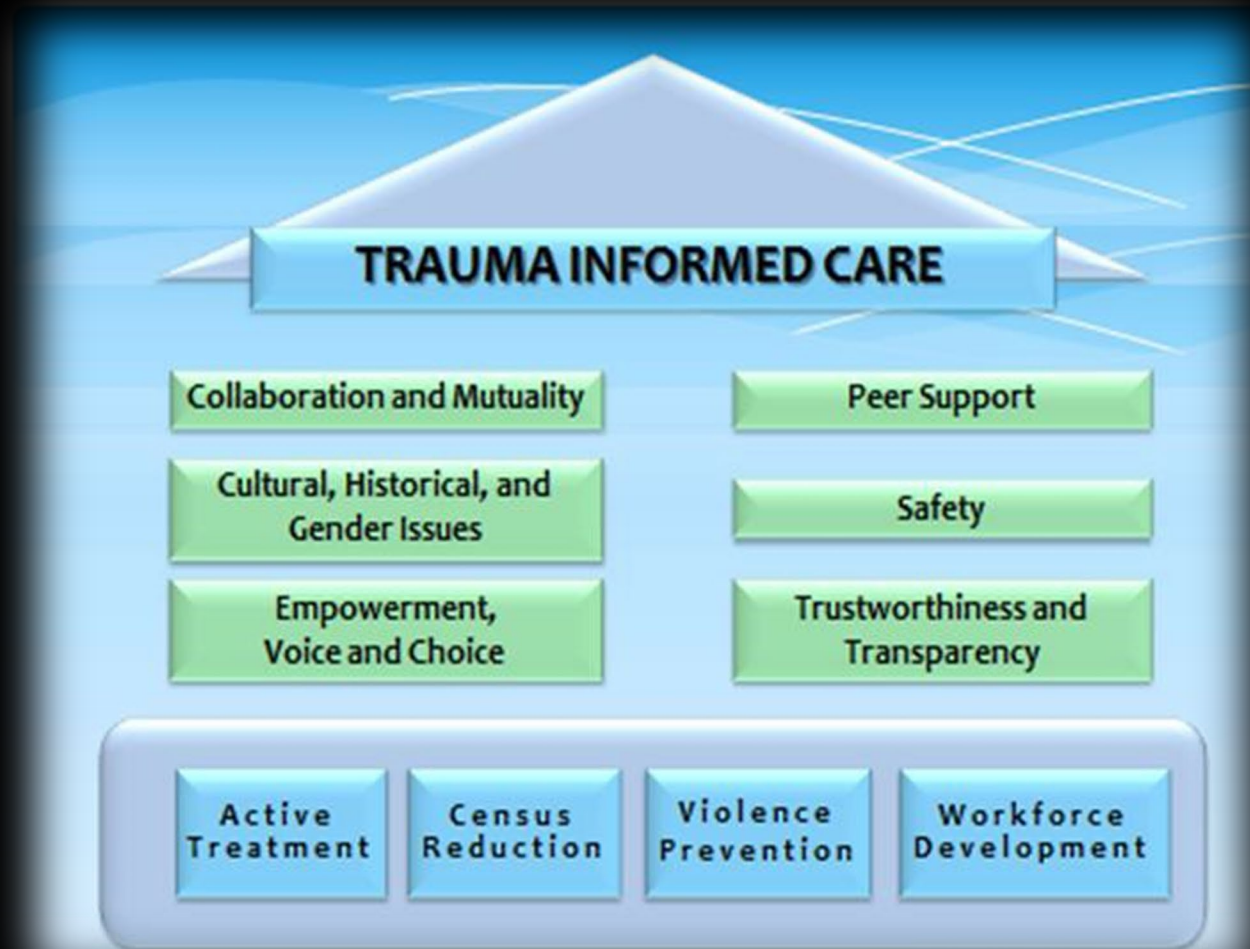
- Full-time Physician Specialists –Medical Clinic
- Dental (Full-time Dentist)
- Medical Consultants
  - Podiatry
  - Ophthalmology
  - Orthopedics
- Emergent Medical Care provided by Capital Health System-Fuld
- Quest Laboratory





# AKFC STRATEGIC GOALS

- A. Active Treatment
- B. Census Management
- C. Violence Prevention
- D. Workforce Development



# VISITATION

- All visitors are required to contact the patient's social worker to schedule a contact, non-contact, or video visit. Only two in-person visitors are permitted at a time. Only two in-person visitors are permitted per patient.

Each unit has a designated day for patient visits, as follows:

- **Unit 1** – Sunday: 1:00 pm to 3:00 pm
- **Unit 2** – Sunday: 6:00 pm to 8:00 pm
- **Unit 3** – Monday: 6:00 pm to 8:00 pm
- **Unit 4** – Tuesday: 6:00 pm to 8:00 pm
- **Unit 5** – Wednesday: 6:00 pm to 8:00 pm
- **Unit 6** – Thursday: 6:00 pm to 8:00 pm
- **Unit 7** – Friday: 6:00 pm to 8:00 pm
- **Unit 8** – Saturday: 6:00 pm to 8:00 pm

- **Note:** Only the male admissions unit 2B, the female admissions unit 1A, and any unit on quarantine, can participate in virtual visits. Those units on quarantine status are cleared after 7 days and resume regular visits.

# ADVOCACY AND PATIENT RIGHTS

When people receive mental health services in a New Jersey State Psychiatric Hospital, their rights are guaranteed by State laws, AKFC policy and the “Patient’s Bill of Rights.”

If the patient believes that he/she is being physically or mentally abused, then he/she should contact and report these complaints to the Patient Service Compliance Unit (PSCU) 24 hours a day, 7 days a week at: **1-888-490-8413**.

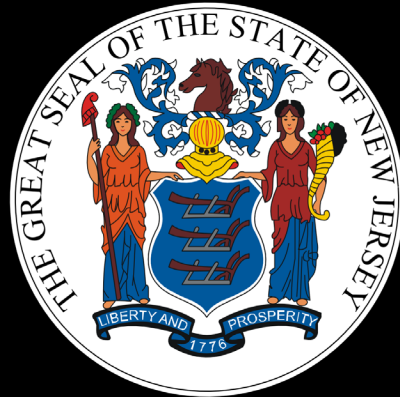
The following people can also give you further assistance or information:

**NJ Public Advocates Office: 609-292-1750.**

**AKFC Client Services Representative/Patient Advocate:**

**609-984-0988 or 1-800-877-2696.**

ON BEHALF OF THE ANN KLEIN FORENSIC CENTER, THE DIVISION OF  
BEHAVIORAL HEALTH SERVICES, AND THE STATE OF NEW JERSEY...



WE THANK YOU FOR YOUR INTEREST IN OUR CENTER!

**THE END**