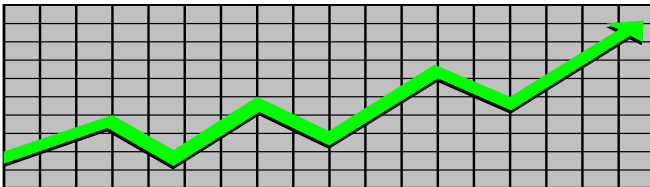


State of New Jersey
Department of Human Services
Division of Family Development

CURRENT PROGRAM STATISTICS



April 2024
Natasha Johnson, Assistant Commissioner

TABLE OF CONTENTS

HIGHLIGHTS:

WFNJ/TANF	ii
NJ SNAP	ii
EMERGENCY ASSISTANCE	ii
GENERAL ASSISTANCE	iii
GA Emergency Assistance.....	iii
GA Program.....	iii
CHILD SUPPORT SERVICES	iii
WORK FIRST NEW JERSEY (WFNJ)	iii
STATISTICS- BY STATE & COUNTY	1
Table 1: WFNJ/TANF Families & Persons (NJ Statewide) April 2022 to 2024.....	1
Table 2: WFNJ/TANF Families (by County)- April 2024.....	2
Table 2B: WFNJ/TANF Persons, Adults, & Children (by County)- April 2024.....	3
Table 3: TANF Work Participation Rates Over 12 Month Period (by County)- April 2024.....	4
Table 4: TANF Work Participation Rates Over 12 Month Period (NJ Statewide)- April 2024.....	5
Table 5: NJ SNAP Households/Persons (NJ Statewide) April 2022 to 2024.....	6
Table 6: NJ SNAP Recipient Trends (NJ Statewide) April 2022 to 2024.....	7
Table 7: NJ SNAP Households/Persons (by County)- April 2024.....	8
Table 8: Emergency Assistance Program (NJ Statewide) April 2022 to 2024.....	9
Table 9: Emergency Assistance Program (by County)- April 2024.....	10
Table 10: General Assistance Program (NJ Statewide) April 2022 to 2024.....	11
Table 11: General Assistance Program (by County)- April 2024.....	12
Table 12: Child Support Services Distributions (NJ Statewide) FFY 2024.....	13
Table 13: Child Support Services Paternities Established- April 2024.....	14
Table 14: Child Support Services Cases With Orders- April 2024.....	15
Table 15: Child Support Services Collections On Current Support- April 2024.....	16
Table 16: Child Support Services Cases With Payments On Arrears- April 2024.....	17
Table 17: WFNJ Statistical Summary- April 2024.....	18
ACRONYMS	19
EXPLANATORY NOTES	20
WFNJ Statistical Summary (Table 17).....	20

DIVISION OF FAMILY DEVELOPMENT CURRENT PROGRAM STATISTICS

APRIL 2024

Each month the Division of Family Development publishes its program statistics for: WFNJ/TANF, NJ SNAP, Emergency Assistance, General Assistance, and Child Support Services. When possible, information is provided separately for children and adults. Many tables also provide trend data with information broken down by county for readers to consider. This report is compiled and prepared by The Bureau of Research & Reporting.

WFNJ/TANF

- As of the end of April, the TANF caseload had increased by 670 cases, from 11,077 in April 2023 to 11,747 in April 2024; an increase of 6%.
- The counties with caseloads that increased the most since April 2023 were Essex (17.5%), Union (15.7%), and Morris (15.1%).
- The counties with caseloads that decreased the most since April 2023 were Hunterdon (-21.6%), Warren (-16.7%), and Sussex (-13.8%).
- Of the WFNJ/TANF cases, 2,414 or 20.5% were child-only in April 2024.
- The counties with the most child-only cases were Camden (420), Hudson (327), and Essex (260).
- Hudson (5,167), Essex (4,919), and Camden (4,203) counties had the greatest number of persons receiving TANF in April 2024.

NJ SNAP (Formerly FOOD STAMPS)

- In April 2024, there were 438,227 households receiving NJ SNAP benefits. The number of NJ SNAP households increased by 17,612 or 4.2%, since April 2023.
- There were 829,381 persons receiving NJ SNAP benefits as of April 2024; a decrease of 1,668 or -0.2% since April 2023.
- The counties having the highest SNAP caseload increase since April 2023 were Union (19.9%), Hudson (10.1%), and Morris (7.9%).
- The counties having the highest SNAP caseload decrease since April 2023 were Atlantic (-6.5%), Sussex (-1.5%), and Cape May (-0.4%).

EMERGENCY ASSISTANCE

- There were 1,770 TANF families receiving Emergency Assistance (EA) in April 2024; an increase of 564 or 46.8% since April 2023.
- In April 2024, EA payments were made for 603 SSI recipients.

DIVISION OF FAMILY DEVELOPMENT CURRENT PROGRAM STATISTICS APRIL 2024

- There were 2,295 GA cases with Emergency Assistance payments in April 2024; an increase of 514 or 28.9% since April 2023.
- The counties that showed the highest percent increase in Emergency Assistance payments were Gloucester (625%), Sussex (200%), and Cumberland (181.8%).
- The counties that showed the highest percent decrease in Emergency Assistance payments were Essex (-24.9%), Middlesex (-16.2%), and Union (-6%).

GENERAL ASSISTANCE

- The total numbers of cases receiving GA has increased from 10,142 to 14,950 since April 2023; an increase of 47.4%.
- There were 10,875 Employable GA and 4,075 Unemployable GA cases in April 2024.
- The counties that showed a percent increase for GA cases were Passaic (116.3%), Salem (102.8%), and Hudson (85.4%) since April 2023.
- The counties that showed the highest percent decrease for GA cases since April 2023 were Hunterdon (-18.6%) and Warren (-0.6%).
- In April 2024, GA cases showed a 3.08% increase since March 2024.

CHILD SUPPORT SERVICES (QUARTERLY REPORT)

- The total collection for the Child Support Services Program was about \$264 million from January 2024 to March 2024; a decrease of -3.38% over the same period from FFY 2023.
- Total distributions decreased -3.4% from March 2023.

WORK FIRST NEW JERSEY (WFNJ)

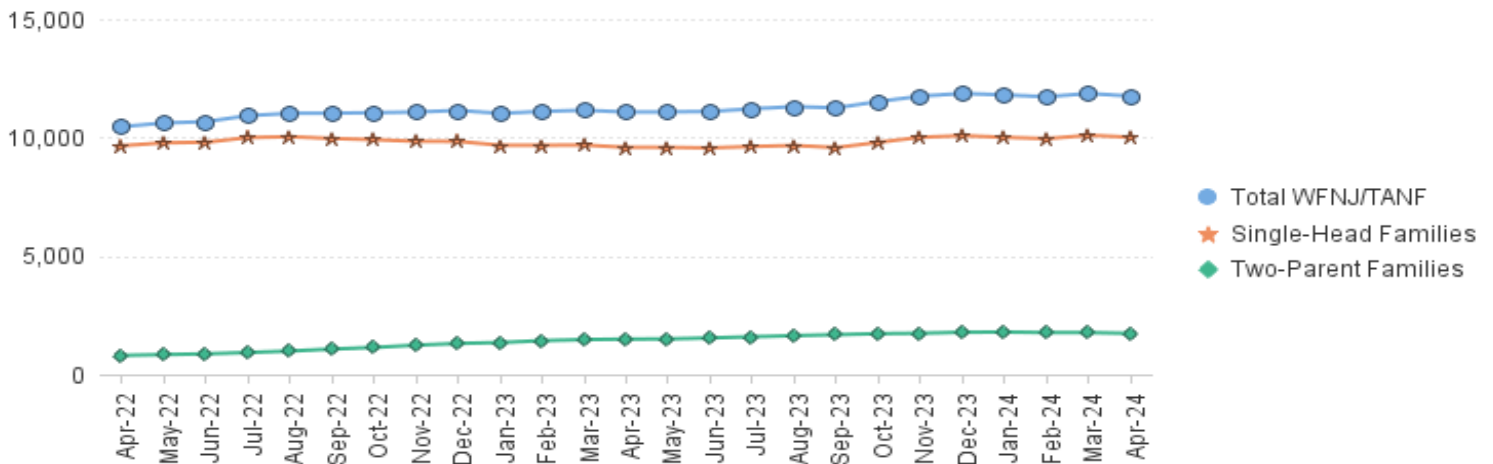
- During the report month of April 2024, there were 530 families in which at least one member was employed and an additional 202 families whose WFNJ assistance cases were closed due to employment - related earnings.
- The three counties with the greatest number of employed active WFNJ recipients were: Essex (121), Hudson (86), and Mercer (44).
- There were 257 former TANF cases receiving post-TANF support in the form of child care assistance.

TABLE 1: WFNJ/TANF PROGRAM

STATEWIDE NUMBER OF APPLICATIONS AND TERMINATIONS DURING APRIL 2024
 NUMBER OF ELIGIBLE FAMILIES & PERSONS RECEIVING WFNJ/TANF FOR APRIL 2024

		APRIL 2022 THROUGH APRIL 2024										
		Cases Added	Cases Closed	Child-Only Cases ‡	Total Single-Head Families	2-Parent Families	Total WFNJ/TANF Families	%CHNG (1 Yr.)	Total Persons	%CHNG (1 Yr.)	Adults	Children
2022	APR	644	622	2,743	9,656	802	10,458	5.5%	27,749	9.8%	8,517	19,232
	MAY	632	475	2,723	9,777	838	10,615	8.7%	28,183	13.4%	8,730	19,453
	JUN	622	599	2,718	9,802	869	10,671	12.4%	28,287	17.1%	8,822	19,465
	JUL	679	518	2,715	9,998	925	10,923	17.2%	29,043	22.1%	9,133	19,910
	AUG	713	609	2,687	10,037	987	11,024	19.9%	29,453	25.6%	9,324	20,129
	SEP	755	808	2,651	9,959	1,070	11,029	22.6%	29,486	28.1%	9,448	20,038
	OCT	753	821	2,626	9,910	1,139	11,049	18.6%	29,606	23.9%	9,562	20,044
	NOV	801	822	2,573	9,843	1,234	11,077	18.4%	29,858	23.0%	9,738	20,120
	DEC	747	792	2,578	9,837	1,308	11,145	15.4%	30,064	19.4%	9,875	20,189
2022 Average		699	623	2,701	9,755	939	10,693		28,466		8,931	19,535
2023	JAN	669	792	2,560	9,674	1,346	11,020	12.0%	29,683	15.1%	9,806	19,877
	FEB	760	717	2,531	9,676	1,426	11,102	9.8%	30,019	12.7%	9,997	20,022
	MAR	822	864	2,565	9,683	1,470	11,153	7.5%	30,069	9.6%	10,058	20,011
	APR	739	858	2,548	9,587	1,490	11,077	5.9%	29,826	7.5%	10,019	19,807
	MAY	825	813	2,523	9,586	1,498	11,084	4.4%	29,863	6.0%	10,059	19,804
	JUN	827	855	2,500	9,562	1,540	11,102	4.0%	29,926	5.8%	10,142	19,784
	JUL	823	764	2,487	9,624	1,590	11,214	2.7%	30,222	4.1%	10,317	19,905
	AUG	887	841	2,445	9,666	1,638	11,304	2.5%	30,533	3.7%	10,497	20,036
	SEP	912	1,097	2,410	9,577	1,677	11,254	2.0%	30,443	3.2%	10,521	19,922
	OCT	944	891	2,463	9,800	1,722	11,522	4.3%	31,139	5.2%	10,781	20,358
	NOV	859	795	2,495	10,011	1,737	11,748	6.1%	31,776	6.4%	10,990	20,786
	DEC	900	836	2,484	10,080	1,781	11,861	6.4%	32,067	6.7%	11,158	20,909
2023 Average		831	844	2,501	9,711	1,576	11,287		30,464		10,362	20,102
2024	JAN	819	879	2,456	10,010	1,790	11,800	7.1%	31,992	7.8%	11,134	20,858
	FEB	743	865	2,451	9,953	1,768	11,721	5.6%	31,775	5.8%	11,038	20,737
	MAR	784	797	2,453	10,095	1,767	11,862	6.4%	32,088	6.7%	11,176	20,912
	APR	832	944	2,414	10,014	1,733	11,747	6.0%	31,674	6.2%	11,066	20,608
2024 Average To Date		795	871	2,444	10,018	1,765	11,783		31,882		11,104	20,779

NJ STATEWIDE
 Eligible Families Receiving WFNJ/TANF
 APRIL 2022 THROUGH APRIL 2024



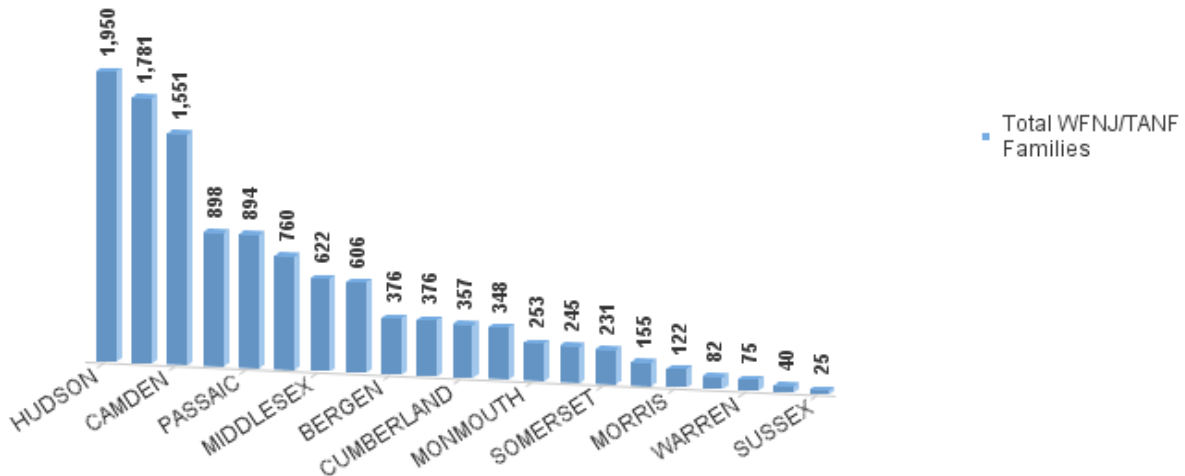
Data is derived from NJ MMIS Shared Data Warehouse Issuance files.
 Effective July 2013 this data query source was converted to the SDW

‡ Child-only cases are defined as families in which no eligible adult receives TANF program benefits, yet the family continues to be headed by at least one of the biological parents, or grandparents, or other appropriate adult.

TABLE 2:
WFNJ/TANF PROGRAM **NUMBER OF APPLICATIONS AND TERMINATIONS BY COUNTY DURING APRIL 2024**
NUMBER OF ELIGIBLE FAMILIES RECEIVING WFNJ/TANF FOR APRIL 2024

County	Cases Added	Cases Closed **	Child-		Total		Total		%CHNG (3 Mon)	%CHNG (1 Yr.)
			Only Cases ‡	1-Adult Cases	Single-Heac Families	2-Parent Families	WFNJ/TANF Families			
ATLANTIC	40	44	168	375	543	63	606	-0.2%	-3.3%	
BERGEN	21	35	66	262	328	48	376	-3.1%	-9.4%	
BURLINGTON	29	40	98	241	339	37	376	-1.8%	12.2%	
CAMDEN	75	112	420	986	1,406	145	1,551	1.9%	2.9%	
CAPE MAY	8	9	27	47	74	8	82	-3.5%	-12.8%	
CUMBERLAND	29	45	108	205	313	44	357	2.6%	9.5%	
ESSEX	101	108	260	1,014	1,274	507	1,781	-1.1%	17.5% Δ	
GLOUCESTER	30	23	61	166	227	18	245	2.5%	-9.3%	
HUDSON	169	167	327	1,362	1,689	261	1,950	0.3%	11.6%	
HUNTERDON	2	0	5	28	33	7	40	8.1%	-21.6% *	
MERCER	62	58	175	581	756	142	898	2.4%	10.9%	
MIDDLESEX	42	40	169	391	560	62	622	2.0%	7.8%	
MONMOUTH	25	20	59	170	229	24	253	-1.2%	2.8%	
MORRIS	7	11	20	85	105	17	122	5.2%	15.1% Δ	
OCEAN	28	21	63	247	310	38	348	1.8%	-0.3%	
PASSAIC	57	77	181	631	812	82	894	-1.5%	-7.7%	
SALEM	16	22	33	103	136	19	155	0.6%	0.6%	
SOMERSET	11	24	39	176	215	16	231	-3.3%	14.9%	
SUSSEX	3	5	8	12	20	5	25	0.0%	-13.8% *	
UNION	71	76	111	464	575	185	760	0.4%	15.7% Δ	
WARREN	6	7	16	54	70	5	75	-9.6%	-16.7% *	
NJ Total	832	944	2,414	7,600	10,014	1,733	11,747	0.2%	6.0%	

Total WFNJ/TANF Families
APRIL 2024
By County



Data is derived from NJ MMIS Shared Data Warehouse Issuance files.
 Effective July 2013 this data query source was converted to the SDW

‡ Child-only cases are defined as families in which no eligible adult receives TANF program benefits, yet the family continues to be headed by at least one of the biological parents, or grandparents, or other appropriate adult

** 'Cases closed' include cases that received a benefit in the prior month, but did not receive any TANF benefit for the report month.

Δ=higher caseload % change

*=lower caseload % change

TABLE 2B :
WFNJ/TANF
PROGRAM

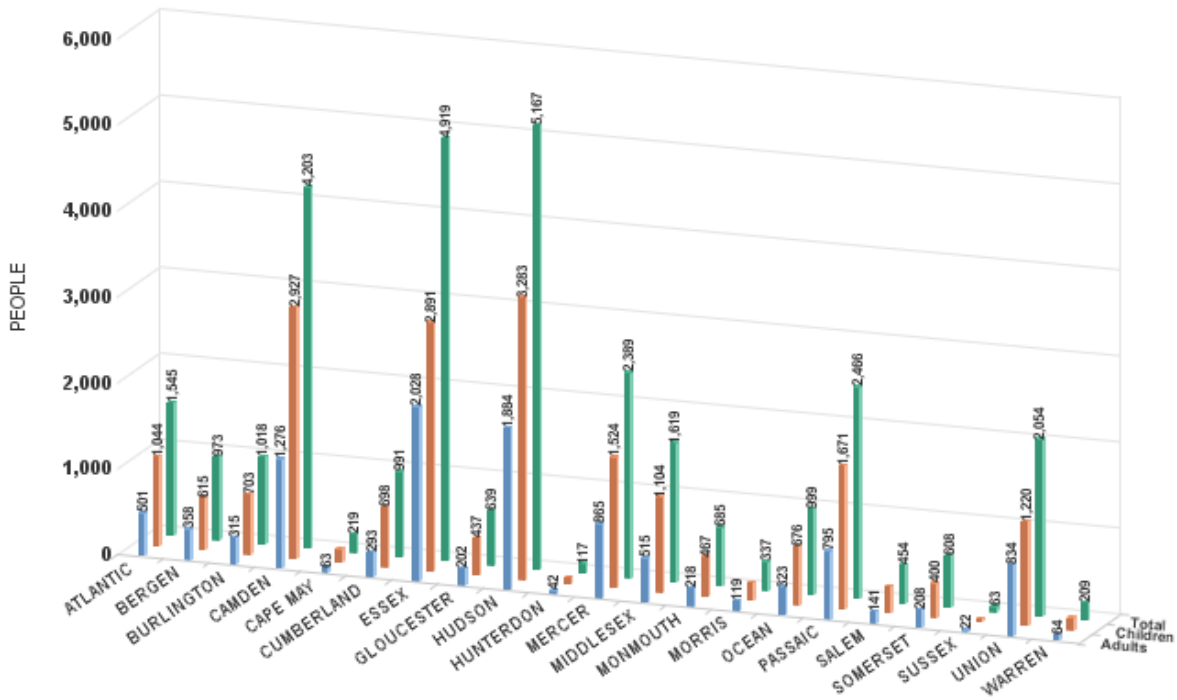
NUMBER OF PARTICIPATING PERSONS, ADULTS, AND CHILDREN
BY COUNTY FOR APRIL 2024

PERSONS

County	Adults	Children	Child/Adult Ratio	Total Persons	% Chng (1 Yr)	Persons Per Case
ATLANTIC	501	1,044	2.08	1,545	-4.4%	2.55
BERGEN	358	615	1.72	973	-13.0%	2.59
BURLINGTON	315	703	2.23	1,018	13.5%	2.71
CAMDEN	1,276	2,927	2.29	4,203	5.7%	2.71
CAPE MAY	63	156	2.48	219	-15.8% *	2.67
CUMBERLAND	293	698	2.38	991	5.9%	2.78
ESSEX	2,028	2,891	1.43	4,919	17.3% Δ	2.76
GLOUCESTER	202	437	2.16	639	-13.4%	2.61
HUDSON	1,884	3,283	1.74	5,167	9.7%	2.65
HUNTERDON	42	75	1.79	117	-14.6% *	2.93
MERCER	865	1,524	1.76	2,389	13.4%	2.66
MIDDLESEX	515	1,104	2.14	1,619	7.7%	2.60
MONMOUTH	218	467	2.14	685	6.2%	2.71
MORRIS	119	218	1.83	337	21.2% Δ	2.76
OCEAN	323	676	2.09	999	1.1%	2.87
PASSAIC	795	1,671	2.10	2,466	-6.5%	2.76
SALEM	141	313	2.22	454	10.2%	2.93
SOMERSET	208	400	1.92	608	15.2% Δ	2.63
SUSSEX	22	41	1.86	63	-25.0% *	2.52
UNION	834	1,220	1.46	2,054	12.7%	2.70
WARREN	64	145	2.27	209	-12.6%	2.79
NJ Total	11,066	20,608	1.86228086	31,674	6.2%	2.70

Δ=higher caseload % change

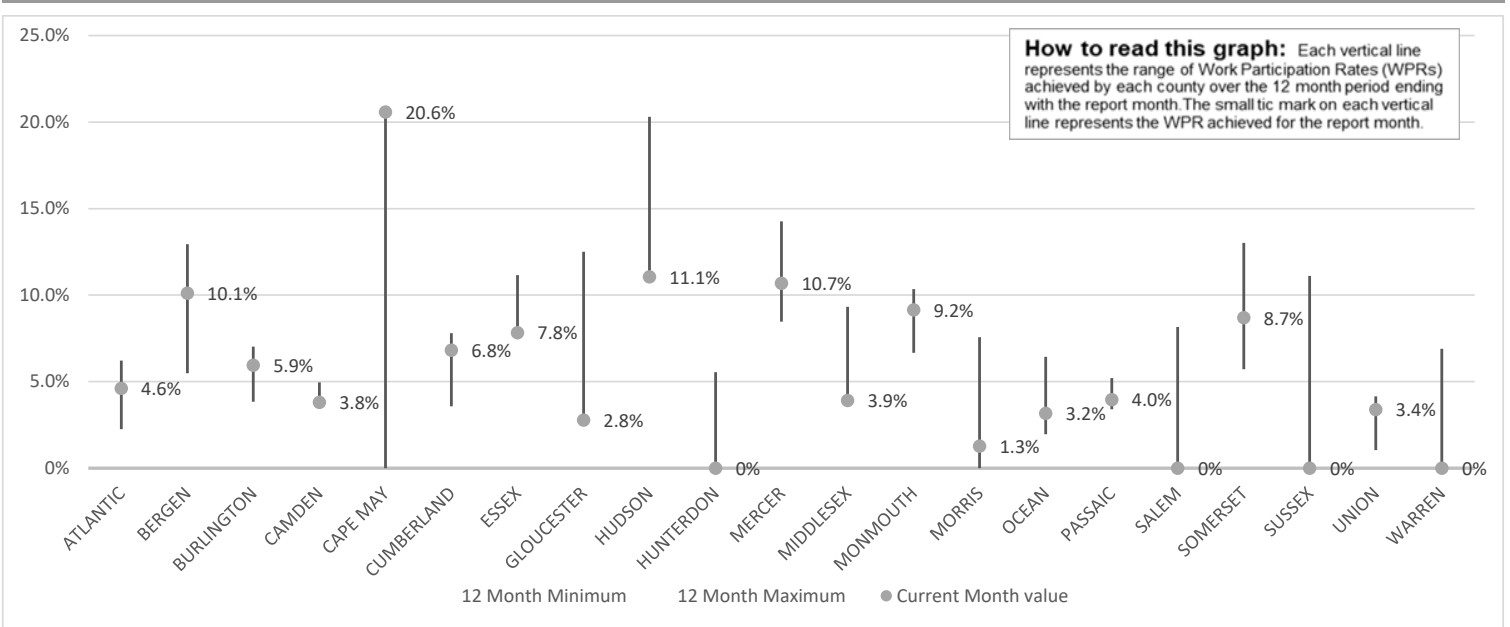
*=lower caseload % change



Data is derived from NJ MMIS Shared Data Warehouse Issuance files.
Effective July 2013 this data query source was converted to the SDW

TABLE 3 :

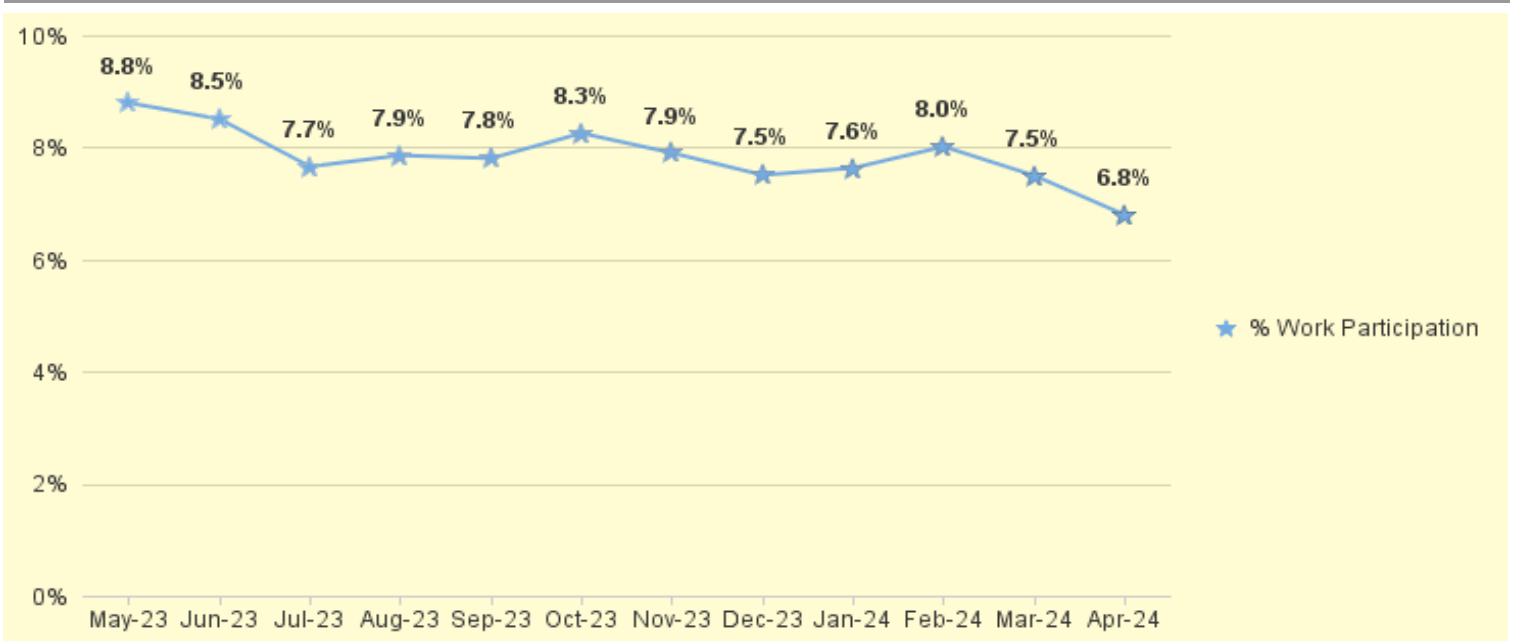
Work Participation Rates Achieved Over 12 Month Period
Ending with APRIL 2024



Data is derived from NJ MMIS Shared Data Warehouse Issuance files.
Effective July 2013 this data query source was converted to the SDW

TABLE 4 :

**WFNJ/TANF Work Participation Rates
for 12-Month Period Ending with APRIL 2024 Statewide**



* The Work Participation rate measures the number of countable Temporary Assistance for Needs Families (TANF) participants based on federal formula. The reported rate is considered to be preliminary until officially calculated by the federal government soon after the close of each federal fiscal year.

**TABLE 5 :
NJ SNAP
(FOOD STAMPS)** **NUMBER OF PARTICIPATING HOUSEHOLDS, PERSONS, ADULTS
AND CHILDREN FOR APRIL 2024 (STATEWIDE)**

		HOUSEHOLDS				PERSONS					
		WFNJ/ TANF	Other low income	Total	% CHNG (1 YR)	Adults	Children	TOTAL	% CHNG (1 YR)	Age 60+	People with a disability
2022	APR	10,706	439,659	450,365	4.1%	491,276	375,105	866,381	3.1%	156,504	231,071
	MAY	10,669	423,672	434,341	-0.9%	474,542	360,324	834,866	-1.8%	154,816	227,400
	JUN	10,650	412,366	423,016	-6.1%	462,757	351,378	814,135	-7.9%	154,107	225,452
	JUL	10,910	400,990	411,900	-7.8%	451,428	343,730	795,158	-8.1%	152,494	222,166
	AUG	12,919	421,433	434,352	-3.8%	475,405	401,190	876,595	0.3%	151,643	224,286
	SEP	11,543	391,350	402,893	-11.9%	440,973	348,303	789,276	-11.1%	150,801	220,166
	OCT	11,175	384,016	395,191	-14.5%	433,352	329,837	763,189	-14.4%	152,434	220,723
	NOV	10,978	386,385	397,363	-14.6%	436,125	332,459	768,584	-14.4%	153,574	221,980
	DEC	11,094	393,042	404,136	-13.7%	443,837	340,993	784,830	-13.1%	155,061	227,586
2022 Average		11,011	418,196	429,207		469,290	362,512	831,802		154,511	227,191
2023	JAN	11,120	388,312	399,432	-14.7%	438,140	336,442	774,582	-14.2%	153,633	223,462
	FEB	10,806	388,213	399,019	-13.7%	437,832	336,772	774,604	-12.9%	154,374	223,539
	MAR	12,027	407,914	419,941	-10.0%	460,274	373,470	833,744	-7.1%	156,031	227,136
	APR	11,987	408,628	420,615	-6.6%	460,514	370,535	831,049	-4.1%	156,584	227,434
	MAY	11,026	397,178	408,204	-6.0%	446,453	341,774	788,227	-5.6%	157,317	225,010
	JUN	11,193	399,666	410,859	-2.9%	449,079	343,009	792,088	-2.7%	157,999	225,250
	JUL	11,874	408,109	419,983	2.0%	458,990	363,129	822,119	3.4%	158,680	226,431
	AUG	11,445	398,827	410,272	-5.5%	448,110	340,718	788,828	-10.0%	158,893	224,313
	SEP	11,607	397,739	409,346	1.6%	446,467	338,291	784,758	-0.6%	160,208	225,665
	OCT	11,862	399,663	411,525	4.1%	448,591	338,651	787,242	3.2%	161,651	226,946
	NOV	11,994	404,810	416,804	4.9%	453,939	342,920	796,859	3.7%	162,683	227,481
	DEC	12,360	413,594	425,954	5.4%	464,039	351,241	815,280	3.9%	164,787	233,859
2023 Average		11,608	401,054	412,663		451,036	348,079	799,115		158,570	226,377
2024	JAN	12,147	413,384	425,531	6.5%	462,636	348,128	810,764	4.7%	164,794	231,669
	FEB	11,859	416,486	428,345	7.3%	465,489	348,007	813,496	5.0%	165,676	231,340
	MAR	12,058	426,988	439,046	4.5%	476,761	357,715	834,476	0.1%	167,855	233,743
	APR	11,717	426,510	438,227	4.2%	474,957	354,424	829,381	-0.2%	168,166	233,544
2024 Average To Date		11,945	420,842	432,787		469,961	352,069	822,029		166,623	232,574

This Table is based on those Households & Persons that received SNAP issuances (benefits) during the month

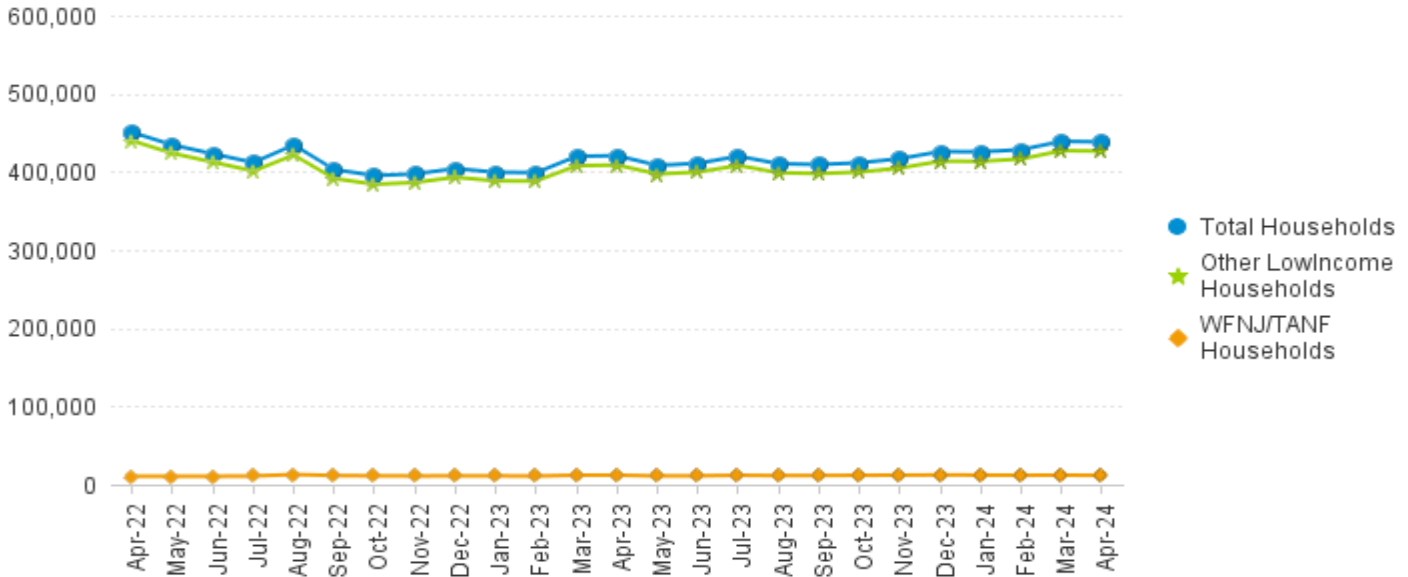
Data is derived from NJ MMIS Shared Data Warehouse.

Effective July 2013 this data query source was converted to the SDW.

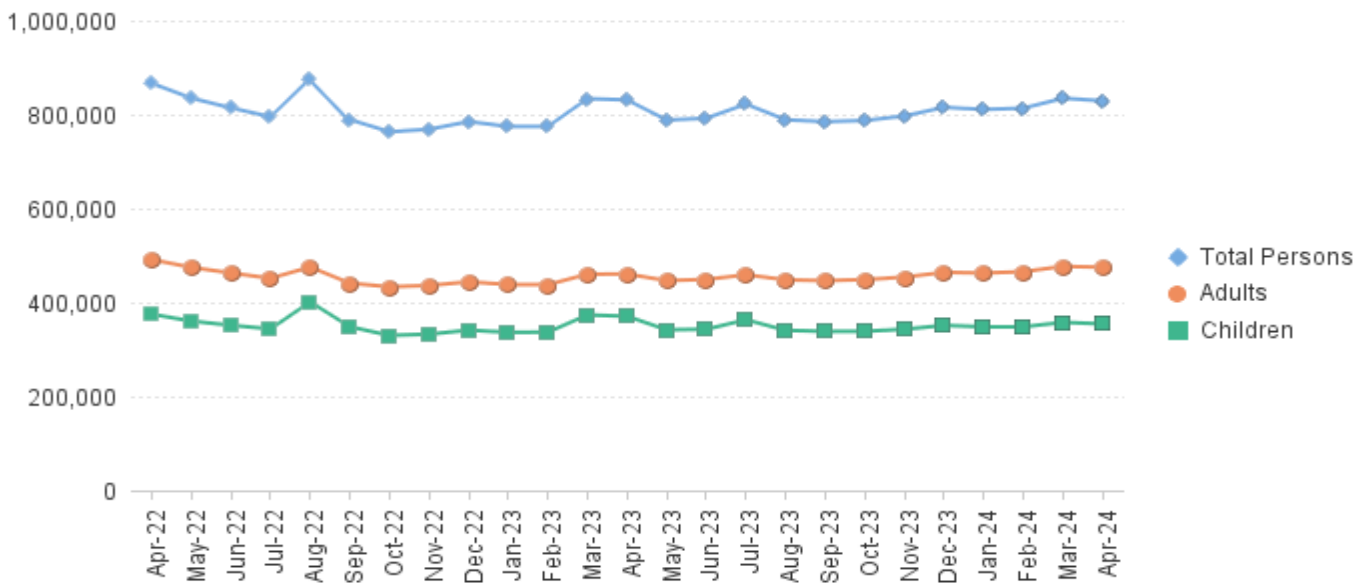
* Age 60+ and People with a disability columns are independent subsets of total persons. An individual might appear in both columns

**TABLE 6: NJ SNAP (FOOD STAMPS)
TRENDS FOR PARTICIPATING HOUSEHOLDS & PERSONS
APRIL 2022 THROUGH APRIL 2024 (STATEWIDE)**

Statewide NJ SNAP Households: APRIL 2022 Through APRIL 2024



Statewide NJ SNAP Persons: APRIL 2022 Through APRIL 2024



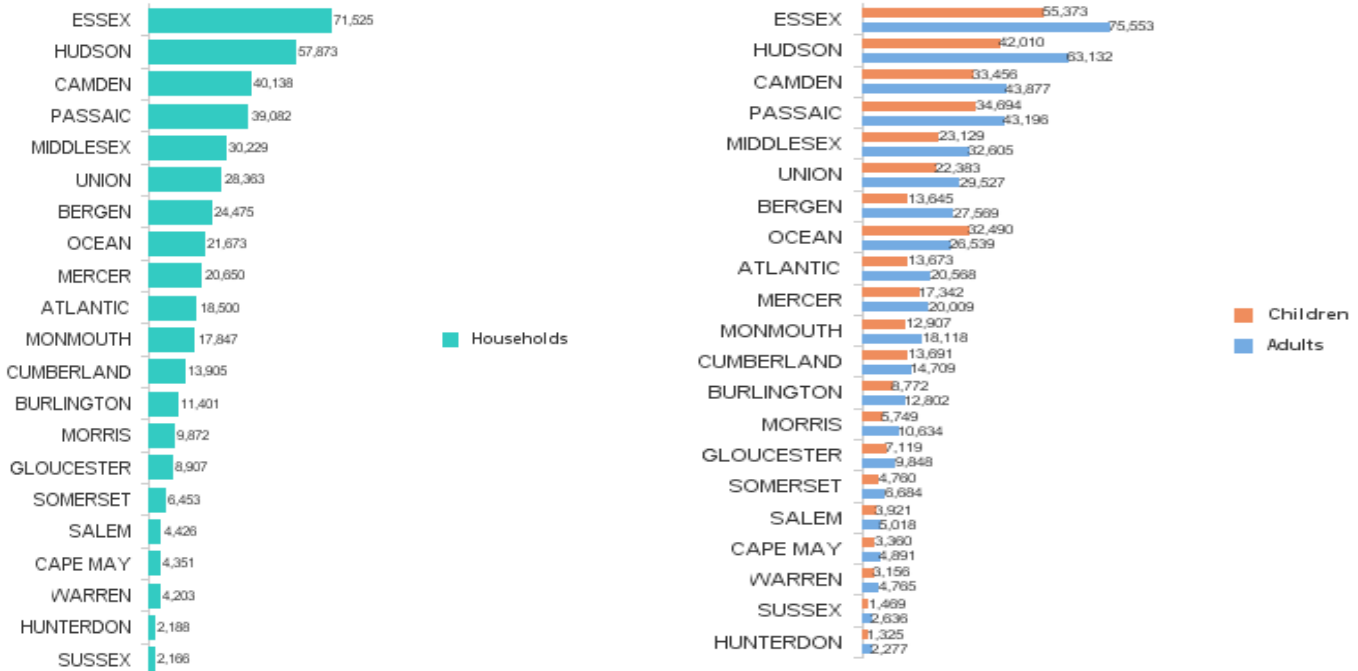
Data is derived from NJ MMIS Shared Data Warehouse Issuance files.
Effective July 2013 this data query source was converted to the SDW

TABLE 7 : NJ SNAP NUMBER OF PARTICIPATING HOUSEHOLDS, PERSONS, ADULTS AND CHILDREN BY COUNTY FOR APRIL 2024

County	HOUSEHOLDS				PERSONS				Age 60+	People with a disability
	WFNJ/TANF	Other low income	TOTAL	% Chng (1 Yr)	Adults	Children	TOTAL	% Chng (1 Yr)		
ATLANTIC	587	17,913	18,500	-6.5% *	20,568	13,673	34,241	-11.4% *	6,953	10,259
BERGEN	347	24,128	24,475	2.7%	27,569	13,645	41,214	0.4%	15,243	17,210
BURLINGTON	476	10,925	11,401	3.2%	12,802	8,772	21,574	-3.1%	4,002	6,826
CAMDEN	1,409	38,729	40,138	2.3%	43,877	33,456	77,333	-1.3%	11,963	20,304
CAPE MAY	84	4,267	4,351	-0.4% *	4,891	3,360	8,251	-3.3%	1,445	2,331
CUMBERLAND	335	13,570	13,905	1.1%	14,709	13,691	28,400	-2.3%	3,862	7,348
ESSEX	2,005	69,520	71,525	4.8%	75,553	55,373	130,926	0.7%	22,078	32,205
GLOUCESTER	227	8,680	8,907	1.3%	9,848	7,119	16,967	-2.4%	3,243	6,214
HUDSON	1,951	55,922	57,873	10.1% Δ	63,132	42,010	105,142	5.7% Δ	24,282	29,780
HUNTERDON	41	2,147	2,188	5.5%	2,277	1,325	3,602	2.2%	884	1,253
MERCER	869	19,781	20,650	1.9%	20,009	17,342	37,351	-1.5%	6,055	10,735
MIDDLESEX	620	29,609	30,229	1.6%	32,605	23,129	55,734	-1.6%	14,931	18,568
MONMOUTH	259	17,588	17,847	4.8%	18,118	12,907	31,025	1.7%	7,460	10,172
MORRIS	139	9,733	9,872	7.9% Δ	10,634	5,749	16,383	5.4% Δ	5,417	5,968
OCEAN	349	21,324	21,673	0.9%	26,539	32,490	59,029	-5.5% *	7,589	11,309
PASSAIC	825	38,257	39,082	0.7%	43,196	34,694	77,890	-4.0%	16,324	19,814
SALEM	163	4,263	4,426	3.9%	5,018	3,921	8,939	-0.8%	1,263	2,402
SOMERSET	205	6,248	6,453	5.4%	6,684	4,760	11,444	0.4%	2,833	3,864
SUSSEX	26	2,140	2,166	-1.5% *	2,636	1,469	4,105	-6.5% *	981	1,591
UNION	719	27,644	28,363	19.9% Δ	29,527	22,383	51,910	13.9% Δ	9,833	12,796
WARREN	81	4,122	4,203	-0.1%	4,765	3,156	7,921	-3.1%	1,525	2,595
NJ TOTAL	11,717	426,510	438,227	4.2%	474,957	354,424	829,381	-0.2%	168,166	233,544

Δ=higher caseload % change *=lower caseload % change

Total NJ SNAP Recipients APRIL 2024 by County



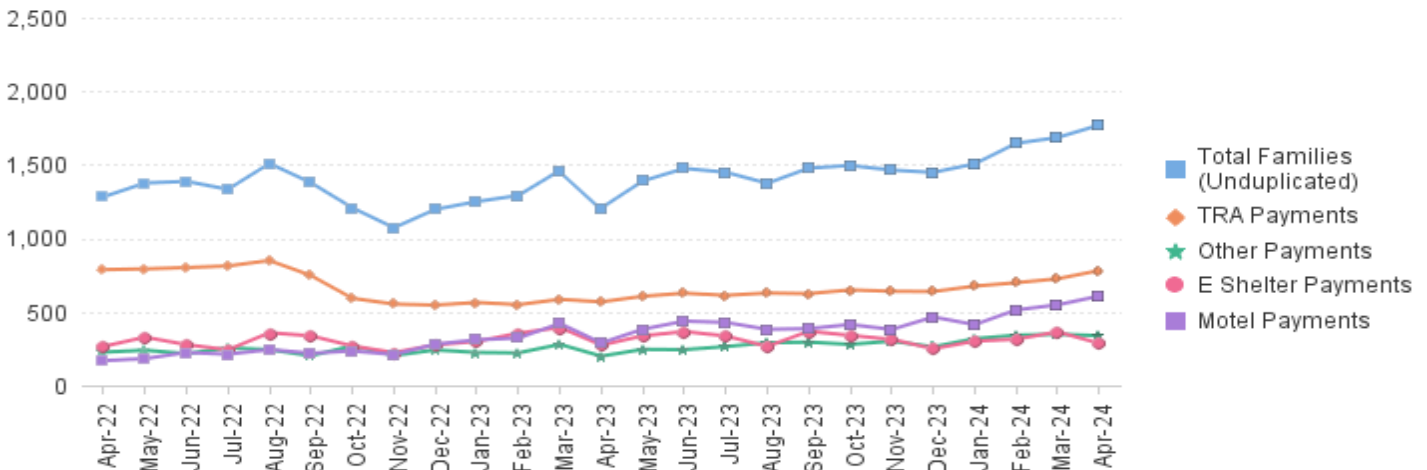
Data is derived from NJ MMIS Shared Data Warehouse. Effective July 2013 this data query source was converted to the SDW.

* Age 60+ and People with a disability columns are independent subsets of total persons. An individual might appear in both columns

TABLE 8 : EMERGENCY ASSISTANCE (STATEWIDE) TOTAL NUMBER OF ELIGIBLE FAMILIES RECEIVING EMERGENCY ASSISTANCE PAYMENTS APRIL 2022 THROUGH APRIL 2024 - STATEWIDE

		Total WFNJ/EA Families (Undupl)		Temp Rent Asst. Payments (Undupl)		Motel Housing Payments (Undupl)		Shelter/Transitional Housing Payments (Undupl)		Other WFNJ/EA Payments (Undupl)	
			% CHNG (1 YR)		% CHNG (1 YR)		% CHNG (1 YR)		% CHNG (1 YR)		% CHNG (1 YR)
2022	APR	1,282	-9.4%	787	-16.0%	168	18.3%	265	-6.4%	226	6.6%
	MAY	1,376	1.5%	792	-15.8%	182	7.1%	328	56.9%	239	27.8%
	JUN	1,387	-0.4%	801	-15.1%	224	34.1%	277	13.5%	216	7.5%
	JUL	1,333	0.4%	812	-9.0%	212	30.9%	242	6.1%	255	34.9%
	AUG	1,509	16.2%	849	-6.4%	243	117.0%	358	52.3%	243	41.3%
	SEP	1,378	3.7%	747	-14.7%	219	58.7%	337	17.8%	201	19.6%
	OCT	1,207	-8.1%	592	-29.8%	234	105.3%	268	-0.4%	269	35.2%
	NOV	1,072	-13.8%	553	-34.6%	210	92.7%	223	-1.3%	203	5.2%
	DEC	1,197	-6.3%	546	-33.9%	280	120.5%	276	10.4%	241	50.6%
2022	Average	1,296		723		204		289		230	
2023	JAN	1,250	4.5%	564	-20.1%	310	148.0%	299	4.9%	224	19.8%
	FEB	1,291	6.0%	549	-23.8%	322	113.2%	355	29.6%	221	5.2%
	MAR	1,462	4.7%	585	-24.3%	421	112.6%	394	18.7%	279	3.0%
	APR	1,206	-5.9%	568	-27.8%	289	72.0%	274	3.4%	199	-11.9%
	MAY	1,390	1.0%	606	-23.5%	382	109.9%	337	2.7%	245	2.5%
	JUN	1,475	6.3%	627	-21.7%	437	95.1%	366	32.1%	243	12.5%
	JUL	1,449	8.7%	612	-24.6%	428	101.9%	336	38.8%	264	3.5%
	AUG	1,374	-8.9%	628	-26.0%	381	56.8%	265	-26.0%	290	19.3%
	SEP	1,477	7.2%	624	-16.5%	386	76.3%	368	9.2%	294	46.3%
	OCT	1,495	23.9%	649	9.6%	414	76.9%	340	26.9%	279	3.7%
	NOV	1,464	36.6%	640	15.7%	380	81.0%	313	40.4%	301	48.3%
	DEC	1,448	21.0%	638	16.8%	465	66.1%	249	-9.8%	262	8.7%
2023	Average	1,398		608		385		325		258	
2024	JAN	1,506	20.5%	675	19.7%	413	33.2%	301	0.7%	318	42.0%
	FEB	1,646	27.5%	698	27.1%	513	59.3%	314	-11.5%	341	54.3%
	MAR	1,685	15.3%	725	23.9%	548	30.2%	364	-7.6%	348	24.7%
	APR	1,770	46.8%	781	37.5%	607	110.0%	286	4.4%	338	69.8%
2024	Average To Date	1,652		720		520		316		336	

NJ STATEWIDE Families Receiving Emergency Assistance APRIL 2022 THROUGH APRIL 2024



* Effective Feb '11 Transitional Housing Payments were removed from 'Other EA Payments' and added to 'Shelter Payments'.

TABLE 9 :
EMERGENCY ASSISTANCE (BY COUNTY) **TOTAL NUMBER OF ELIGIBLE FAMILIES RECEIVING EMERGENCY ASSISTANCE PAYMENT BY COUNTY (UNDUPLICATED CASES) FOR APRIL 2024**

County	TOTAL WFNJ/EA Families (Undupl)	% CHNG From APR 23	Temp Rent Asst. Payments (Undupl)	Motel Housing Payments (Undupl)	Shelter/Transitional Housing Payments (Undupl)	SSI Receipts Receiving EA **
ATLANTIC	51	82.1% Δ	36	7	1	46
BERGEN	42	16.7%	20	4	10	26
BURLINGTON	167	18.4%	13	134	21	9
CAMDEN	56	9.8% *	13	22	17	16
CAPE MAY	31	34.8%	12	19	0	17
CUMBERLAND	8	0% *	0	1	7	3
ESSEX	125	34.4%	51	0	58	26
GLOUCESTER	18	38.5%	2	2	9	17
HUDSON	387	61.3%	211	112	50	59
HUNTERDON	5	66.7%	1	3	0	1
MERCER	166	35.0%	98	61	0	138
MIDDLESEX	105	78.0%	44	37	9	55
MONMOUTH	56	33.3%	1	26	31	33
MORRIS	22	46.7%	7	13	1	21
OCEAN	66	94.1% Δ	25	40	0	17
PASSAIC	196	66.1%	147	16	23	38
SALEM	2	-75.0% *	1	0	1	0
SOMERSET	98	60.7%	48	29	14	44
SUSSEX	10	42.9%	0	7	3	2
UNION	146	37.7%	45	69	31	24
WARREN	13	160.0% Δ	6	5	0	11
NJ Total	1,770	46.8%	781	607	286	603

Δ=higher caseload % change

*=lower caseload % change

** SSI-EA includes pay codes 22 and 24, data is derived from NJ Division of Family Development FAMIS Report #FM430-03A

WFNJ/EA data is derived from NJ MMIS Shared Data Warehouse.

Effective July 2013 this data query source was converted to the SDW.

Number WFNJ Families Receiving EA by County
APRIL 2024

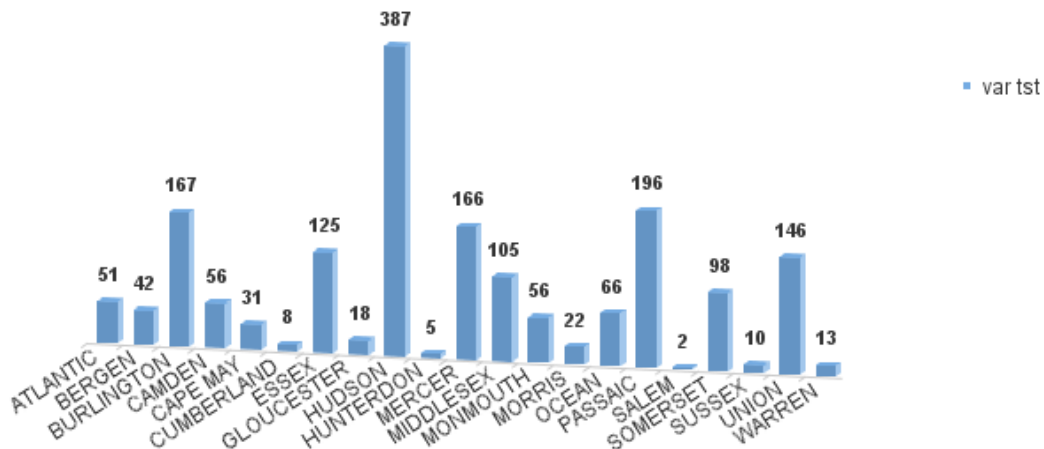


TABLE 10: GENERAL ASSISTANCE PROGRAM
NUMBER OF EMPLOYABLE AND UNEMPLOYABLE RECIPIENTS AND EMERGENCY ASSISTANCE PAYMENTS - STATEWIDE
APRIL 2022 THROUGH APRIL 2024

PROGRAM	Total Cases						Emergency Assistance Cases			
	Employable	% Chng (1 Yr)	Unemployable	% Chng (1 Yr)	Total	% Chng (1 Yr)	Temporary Rental Assistance	Other GA-EA	Total	% Chng (1 Yr)
2022 APR	11,810	24.3%	3,823	-10.8%	15,633	13.4%	742	1,196	1,938	-4.8%
MAY	12,039	25.0%	3,805	-13.9%	15,844	12.8%	750	1,152	1,902	45.2%
JUN	12,306	36.6%	3,858	-6.6%	16,164	22.0%	782	1,250	2,032	6.8%
JUL	12,451	37.0%	3,862	-5.3%	16,313	23.9%	758	1,196	1,954	0.0%
AUG	9,785	7.3%	3,342	-16.1%	13,127	0.2%	691	1,396	2,087	13.2%
SEP	8,370	-7.5%	3,225	-17.6%	11,595	-10.5%	635	1,261	1,896	-0.3%
OCT	7,829	-15.9%	3,291	-15.1%	11,120	-15.7%	574	1,184	1,758	-3.3%
NOV	7,313	-24.4%	3,326	-13.7%	10,639	-21.3%	602	1,040	1,642	-4.6%
DEC	6,950	-30.8%	3,413	-11.5%	10,363	-25.4%	599	1,157	1,756	-3.1%
2022 AVERAGE	10,103		3,619		13,722		688	1,192	1,880	
2023 JAN	6,760	-34.0%	3,447	-9.3%	10,207	-27.3%	590	1,112	1,702	4.8%
FEB	6,563	-38.6%	3,408	-10.6%	9,971	-31.2%	570	1,170	1,740	-6.1%
MAR	6,607	-42.4%	3,555	-8.1%	10,162	-33.7%	586	1,251	1,837	-10.8%
APR	6,569	-44.4%	3,573	-6.5%	10,142	-35.1%	623	1,158	1,781	-8.1%
MAY	6,567	-45.5%	3,686	-3.1%	10,253	-35.3%	634	1,267	1,901	-0.1%
JUN	6,629	-46.1%	3,782	-2.0%	10,411	-35.6%	633	1,155	1,788	-12.0%
JUL	6,971	-44.0%	3,754	-2.8%	10,725	-34.3%	605	1,097	1,702	-12.9%
AUG	7,840	-19.9%	3,817	14.2%	11,657	-11.2%	602	1,268	1,870	-10.4%
SEP	8,277	-1.1%	3,755	16.4%	12,032	3.8%	610	1,005	1,615	-14.8%
OCT	8,997	14.9%	3,831	16.4%	12,828	15.4%	583	1,209	1,792	1.9%
NOV	9,407	28.6%	3,818	14.8%	13,225	24.3%	600	1,114	1,714	4.4%
DEC	9,712	39.7%	3,905	14.4%	13,617	31.4%	598	1,272	1,870	6.5%
2023 AVERAGE	7,575		3,694		11,269		603	1,173	1,776	
2024 JAN	9,888	46.3%	3,942	14.4%	13,830	35.5%	612	1,247	1,859	9.2%
FEB	10,019	52.7%	3,927	15.2%	13,946	39.9%	513	1,428	1,941	11.6%
MAR	10,510	59.1%	3,993	12.3%	14,503	42.7%	629	1,449	2,078	10.0%
APR	10,875	65.6%	4,075	14.0%	14,950	47.4%	659	1,636	2,295	28.9%
2024 AVERAGE TO DATE	10,323		3,984		14,307		603	1,440	2,043	

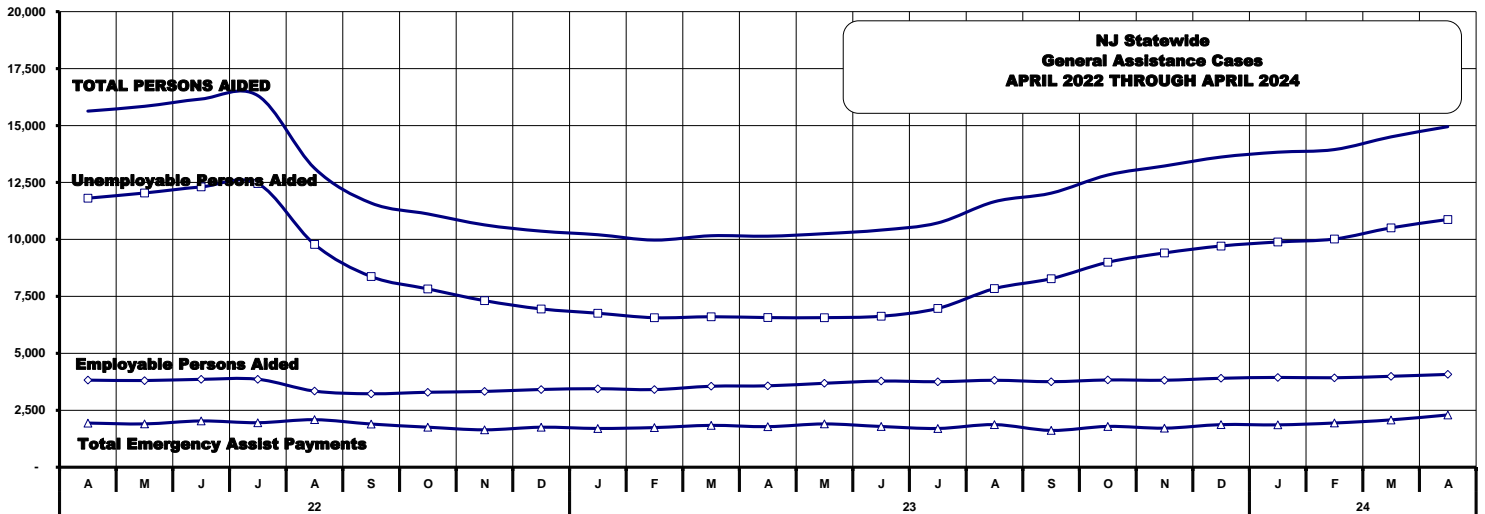


TABLE 11: EMPLOYABLE AND UNEMPLOYABLE CASES AND EMERGENCY ASSISTANCE CASES RECEIVING PAYMENTS BY COUNTY APRIL 2024

PROGRAM	Total Cases						Emergency Assistance Cases			
	Employable	% Chng (1 Yr)	Unemployable	% Chng (1 Yr)	Total	% Chng (1 Yr)	Temporary Rental Assistance	Other GA-EA	Total	% Chng (1 Yr)
ATLANTIC	1,075	36.2%	160	7.4%	1,235	31.7%	80	58	138	-2.1%
BERGEN	344	36.5%	268	-1.8%	612	16.6%	59	39	98	7.7%
BURLINGTON	431	85.0%	210	55.6%	641	74.2%	8	171	179	77.2%
CAMDEN	1,569	42.2%	505	29.2%	2,074	38.8%	34	89	123	66.2%
CAPE MAY	193	78.7%	56	40.0%	249	68.2%	14	74	88	76.0%
CUMBERLAND	407	94.7%	184	16.5%	591	61.0%	2	29	31	181.8% Δ
ESSEX	1,078	58.1%	269	23.4%	1,347	49.7%	22	117	139	-24.9% *
GLOUCESTER	183	26.2%	124	0.0%	307	14.1%	3	26	29	625.0% Δ
HUDSON	1,527	106.6%	368	30.0%	1,895	85.4%	131	127	258	50.9% Δ
HUNTERDON	66	-17.5%	48	-20.0%	114	-18.6%	8	22	30	11.1% *
MERCER	526	49.9%	268	14.0%	794	35.5%	45	73	118	34.1%
MIDDLESEX	361	76.1%	341	1.8%	702	30.0%	43	81	124	-16.2% *
MONMOUTH	370	156.9%	219	2.8%	589	65.0%	3	104	107	57.4%
MORRIS	224	31.0%	156	7.6%	380	20.3%	40	58	98	18.1%
OCEAN	379	57.9%	226	4.1%	605	32.4%	17	56	73	28.1%
PASSAIC	670	190.0%	178	10.6%	848	116.3%	55	47	102	161.5% Δ
SALEM	174	262.5%	45	-25.0%	219	102.8%	3	4	7	40.0% Δ
SOMERSET	331	81.9%	98	38.0%	429	69.6%	40	179	219	84.0%
SUSSEX	39	95.0%	28	3.7%	67	42.6%	0	6	6	200.0% Δ
UNION	837	49.7%	258	30.3%	1,095	44.6%	42	238	280	-6.0% *
WARREN	91	16.7%	66	-17.5%	157	-0.6%	10	38	48	152.6% *
NJ TOTAL	10,875	65.6%	4,075	14.0%	14,950	47.4%	659	1,636	2,295	28.9%

Δ = ↑ Caseload %

* = ↓ Caseload %

**TABLE 12:
OFFICE OF
CHILD SUPPORT
SERVICES**

**OFFICE OF CHILD SUPPORT SERVICES
QUARTERLY PERFORMANCE REPORT
STATE SUMMARY
TITLE IV-D SOURCE COLLECTION REPORT
Comparison of Quarter-2 (FFY 2023 vs. FFY 2024)**

COLLECTION SOURCE	TOTAL 1/1/2023 - 3/31/2023	% OF TOTAL COLLECTIONS	TOTAL 1/1/2024 - 3/31/2024	% OF TOTAL COLLECTIONS	DOLLAR CHANGE	% CHANGE
FEDERAL TAX	\$16,139,052	5.90%	\$12,243,325	4.64%	\$ (3,895,727)	-24.14%
STATE TAX	\$404,499	0.15%	\$409,031	0.15%	\$ 4,532	1.12%
UIB	\$6,864,655	2.51%	\$7,869,464	2.98%	\$ 1,004,809	14.64%
INC WITHHOLD	\$182,187,063	66.65%	\$177,803,064	67.32%	\$ (4,383,999)	-2.41%
FROM OTHER STATES	\$10,105,532	3.70%	\$9,846,134	3.73%	\$ (259,398)	-2.57%
ADMIN ENFORCEMENT	\$4,775,169	1.75%	\$4,829,124	0.02%	\$ 53,954	1.13%
OTHER	\$52,874,824	19.34%	\$51,119,225	19.35%	\$ (1,755,599)	-3.32%
TOTAL COLLECTIONS*	\$273,350,794	100%	\$264,119,367	100%	\$ (9,231,428)	-3.38%
DISBURSED COLLECTIONS**	\$234,232,421		\$226,333,510		\$ (7,898,911)	-3.37%

* Includes collections on both current support and arrears.

** Includes collections on both current support and arrears; also includes money sent to other states.

SOURCE: NJKiDS (Based on Federal Quarterly Report of Collections - OCSE-34A except Disbursed Collections)

Disbursed Collections obtained from Federal Data Report - OCSE-157, which is reported annually to Congress and used in the calculation of incentive dollars earned by each state.

**TABLE 13:
OFFICE OF
CHILD SUPPORT
SERVICES**

**OFFICE OF CHILD SUPPORT SERVICES
STATE SUMMARY
TITLE IV-D PATERNITY ESTABLISHMENT REPORT**
Comparison of April (FFY 2023 vs. FFY 2024)

County	APRIL 2023			APRIL 2024			Increase or Decrease (-) from FFY 2023 to FFY 2024
	Total Children Born Out of Wedlock*	Number of Paternities Established	Percent of Paternities Established	Total Children Born Out of Wedlock*	Number of Paternities Established	Percent of Paternities Established	
Atlantic	4,881	4,850	99.4%	4,446	4,446	100.0%	0.6%
Bergen	2,484	2,450	98.6%	2,277	2,233	98.1%	-0.6%
Burlington	3,695	3,613	97.8%	3,370	3,320	98.5%	0.7%
Camden	12,429	12,171	97.9%	11,313	11,083	98.0%	0.0%
Cape May	896	892	99.6%	794	794	100.0%	0.4%
Cumberland	5,370	5,327	99.2%	4,992	4,945	99.1%	-0.1%
Essex	18,802	17,940	95.4%	17,240	16,527	95.9%	0.4%
Gloucester	3,281	3,247	99.0%	2,988	2,978	99.7%	0.7%
Hudson	7,611	7,354	96.6%	6,997	6,816	97.4%	0.8%
Hunterdon	161	161	100.0%	133	139	104.5%	4.5%
Mercer	5,154	4,996	96.9%	4,586	4,462	97.3%	0.4%
Middlesex	4,918	4,817	97.9%	4,466	4,366	97.8%	-0.2%
Monmouth	3,540	3,476	98.2%	3,126	3,056	97.8%	-0.4%
Morris	895	887	99.1%	766	761	99.3%	0.2%
Ocean	3,765	3,697	98.2%	3,432	3,373	98.3%	0.1%
Passaic	7,565	7,362	97.3%	6,695	6,569	98.1%	0.8%
Salem	2,308	2,239	97.0%	2,213	2,113	95.5%	-1.5%
Somerset	1,016	999	98.3%	864	855	99.0%	0.6%
Sussex	391	396	101.3%	368	376	102.2%	0.9%
Union	8,456	8,162	96.5%	7,974	7,698	96.5%	0.0%
Warren	570	572	100.4%	485	486	100.2%	-0.1%
NJ TOTALS	98,188	95,608	97.4%	89,525	87,396	97.6%	0.2%

SOURCE: NJKiDS (Based on Federal Performance Measures - OCSE-157)

* Information on Out of Wedlock Births obtained from NJ Bureau of Vital Statistics

**TABLE 14:
OFFICE OF
CHILD SUPPORT
SERVICES**

**OFFICE OF CHILD SUPPORT SERVICES
STATE SUMMARY
TITLE IV-D REPORT OF CASES WITH ORDERS**

Comparison of April (FFY 2023 vs. FFY 2024)

County	APRIL 2023			APRIL 2024			Increase or Decrease (-) from FFY 2023 to FFY 2024
	Total Cases	Cases with Orders	% of Cases with Orders	Total Cases	Cases with Orders	% of Cases with Orders	
Atlantic	9,608	8,882	92.4%	9,168	8,381	91.4%	-1.0%
Bergen	9,918	9,625	97.0%	9,508	9,221	97.0%	-0.1%
Burlington	10,972	10,048	91.6%	10,690	9,628	90.1%	-1.5%
Camden	23,972	22,453	93.7%	22,790	21,308	93.5%	-0.2%
Cape May	2,425	2,295	94.6%	2,281	2,181	95.6%	1.0%
Cumberland	10,195	9,623	94.4%	9,800	9,189	93.8%	-0.6%
Essex	33,366	28,964	86.8%	32,426	27,786	85.7%	-1.1%
Gloucester	8,574	8,164	95.2%	8,080	7,666	94.9%	-0.3%
Hudson	16,744	14,959	89.3%	16,322	14,352	87.9%	-1.4%
Hunterdon	1,102	1,039	94.3%	1,023	967	94.5%	0.2%
Mercer	11,028	9,851	89.3%	10,508	9,386	89.3%	0.0%
Middlesex	14,729	13,572	92.1%	14,140	12,933	91.5%	-0.7%
Monmouth	10,500	9,868	94.0%	9,772	9,181	94.0%	0.0%
Morris	4,699	4,565	97.1%	4,479	4,359	97.3%	0.2%
Ocean	11,958	11,438	95.7%	11,408	10,868	95.3%	-0.4%
Passaic	15,838	13,865	87.5%	14,871	13,426	90.3%	2.7%
Salem	3,511	3,309	94.2%	3,379	3,163	93.6%	-0.6%
Somerset	3,759	3,424	91.1%	3,536	3,194	90.3%	-0.8%
Sussex	2,197	2,141	97.5%	2,148	2,114	98.4%	1.0%
Union	15,473	14,580	94.2%	14,705	13,944	94.8%	0.6%
Warren	2,164	2,045	94.5%	2,005	1,939	96.7%	2.2%
NJ TOTALS	222,732	204,710	91.9%	213,039	195,186	91.6%	-0.3%

SOURCE: NJKiDS (Based on Federal Performance Measures - OCSE-157)

**TABLE 15:
OFFICE OF
CHILD SUPPORT
SERVICES**

**OFFICE OF CHILD SUPPORT SERVICES
STATE SUMMARY
TITLE IV-D COLLECTIONS ON CURRENT SUPPORT**
Comparison of April (FFY 2023 vs. FFY 2024)

County	APRIL 2023			APRIL 2024			Increase or Decrease (-) from FFY 2023 to FFY 2024
	Total Current Support Due	Total Current Support Distributed	Total Collection Rate	Total Current Support Due	Total Current Support Distributed	Total Collection Rate	
Atlantic	\$3,112,269	\$2,022,254	65.0%	\$3,348,496	\$2,199,824	65.7%	0.7%
Bergen	\$6,868,364	\$5,092,425	74.1%	\$7,114,682	\$5,237,922	73.6%	-0.5%
Burlington	\$4,627,675	\$3,178,799	68.7%	\$4,887,927	\$3,365,249	68.8%	0.2%
Camden	\$6,540,320	\$3,885,140	59.4%	\$7,015,327	\$4,188,569	59.7%	0.3%
Cape May	\$856,092	\$571,994	66.8%	\$898,810	\$627,317	69.8%	3.0%
Cumberland	\$2,512,600	\$1,455,850	57.9%	\$2,727,761	\$1,603,381	58.8%	0.8%
Essex	\$8,780,160	\$5,183,852	59.0%	\$9,414,071	\$5,558,681	59.0%	0.0%
Gloucester	\$3,359,753	\$2,216,290	66.0%	\$3,483,297	\$2,342,147	67.2%	1.3%
Hudson	\$6,180,362	\$4,049,890	65.5%	\$6,610,347	\$4,215,531	63.8%	-1.8%
Hunterdon	\$910,560	\$756,855	83.1%	\$885,611	\$752,208	84.9%	1.8%
Mercer	\$3,366,460	\$2,155,691	64.0%	\$3,663,343	\$2,326,207	63.5%	-0.5%
Middlesex	\$6,296,790	\$4,331,265	68.8%	\$6,736,634	\$4,647,589	69.0%	0.2%
Monmouth	\$5,486,674	\$3,964,062	72.2%	\$5,493,318	\$4,027,980	73.3%	1.1%
Morris	\$3,565,710	\$2,595,867	72.8%	\$3,627,133	\$2,704,445	74.6%	1.8%
Ocean	\$5,311,750	\$3,773,926	71.0%	\$5,583,497	\$3,965,653	71.0%	0.0%
Passaic	\$5,222,136	\$3,261,404	62.5%	\$5,729,382	\$3,619,773	63.2%	0.7%
Salem	\$936,583	\$568,131	60.7%	\$984,581	\$592,664	60.2%	-0.5%
Somerset	\$2,244,957	\$1,829,601	81.5%	\$2,301,175	\$1,868,876	81.2%	-0.3%
Sussex	\$1,421,315	\$1,078,909	75.9%	\$1,440,845	\$1,087,137	75.5%	-0.5%
Union	\$5,862,326	\$3,853,971	65.7%	\$6,364,053	\$4,200,473	66.0%	0.3%
Warren	\$1,014,386	\$755,025	74.4%	\$1,074,783	\$819,573	76.3%	1.8%
NJ TOTALS	\$84,477,245	\$56,581,203	67.0%	\$89,385,073	\$59,951,200	67.1%	0.1%

SOURCE: NJKiDS (Based on Federal Performance Measures - OCSE-157)

**TABLE 16:
OFFICE OF
CHILD SUPPORT
SERVICES**

**OFFICE OF CHILD SUPPORT SERVICES
STATE SUMMARY
TITLE IV-D CASES ARREARS COLLECTION REPORT**

Comparison of April (FFY 2023 vs. FFY 2024)

County	APRIL 2023			APRIL 2024			Increase or Decrease (-) from FFY 2023 to FFY 2024
	Total Cases with Arrears	Total Amount Collected	Average Arrears Collection per Case	Total Cases with Arrears	Total Amount Collected	Average Arrears Collection per Case	
Atlantic	6,017	\$620,253	\$103.08	5,856	\$878,623	\$150.04	\$46.95
Bergen	6,340	\$1,070,357	\$168.83	6,394	\$1,364,679	\$213.43	\$44.61
Burlington	6,731	\$856,899	\$127.31	6,590	\$1,189,885	\$180.56	\$53.25
Camden	13,866	\$1,549,690	\$111.76	13,407	\$2,043,034	\$152.39	\$40.62
Cape May	1,577	\$169,272	\$107.34	1,566	\$271,818	\$173.57	\$66.24
Cumberland	6,132	\$632,859	\$103.21	5,934	\$939,173	\$158.27	\$55.06
Essex	17,840	\$2,540,021	\$142.38	17,249	\$2,665,484	\$154.53	\$12.15
Gloucester	5,466	\$647,036	\$118.37	5,274	\$884,727	\$167.75	\$49.38
Hudson	10,240	\$1,143,345	\$111.65	10,074	\$1,612,311	\$160.05	\$48.39
Hunterdon	674	\$98,503	\$146.15	636	\$115,310	\$181.31	\$35.16
Mercer	6,856	\$859,787	\$125.41	6,575	\$956,412	\$145.46	\$20.06
Middlesex	9,049	\$1,035,413	\$114.42	8,892	\$1,552,455	\$174.59	\$60.17
Monmouth	6,436	\$952,938	\$148.06	6,242	\$1,278,764	\$204.86	\$56.80
Morris	3,061	\$475,896	\$155.47	3,113	\$711,492	\$228.56	\$73.08
Ocean	7,330	\$857,262	\$116.95	7,240	\$1,324,214	\$182.90	\$65.95
Passaic	9,418	\$1,098,850	\$116.68	9,390	\$1,649,711	\$175.69	\$59.01
Salem	2,058	\$172,062	\$83.61	1,929	\$330,046	\$171.10	\$87.49
Somerset	2,246	\$353,574	\$157.42	2,226	\$469,668	\$210.99	\$53.57
Sussex	1,418	\$182,245	\$128.52	1,405	\$272,802	\$194.17	\$65.64
Union	9,544	\$1,154,741	\$120.99	9,378	\$1,666,826	\$177.74	\$56.75
Warren	1,372	\$207,237	\$151.05	1,366	\$227,942	\$166.87	\$15.82
NJ TOTALS	133,671	\$16,678,240	\$124.77	130,736	\$22,405,376	\$171.38	\$46.61

SOURCE: OCSE-157 Child Support Enforcement Annual Data Report

Table 17
WFNJ**WORK FIRST NEW JERSEY STATISTICAL SUMMARY****APRIL 2024**

COUNTY	EMPLOYMENT DIRECTED ACTIVITIES			EMPLOYED OPEN (WFNJ RECIPIENT)	SUPPORT SERVICES ON ACTIVE CASE		CLOSED FOR EMPLOYMENT THIS MONTH	POST ASSISTANCE CHILD CARE
	CWEP	ALL OTHER TRAINING	JOB SEARCH		CHILD CARE	TRAINING REL. EXPENSES		
ATLANTIC	20	58	0	18	21	13	6	19
BERGEN	33	7	56	13	52	23	12	4
BURLINGTON	166	7	67	27	37	17	7	7
CAMDEN	31	143	8	40	80	6	21	2
CAPE MAY	2	7	3	8	6	6	1	2
CUMBERLAND	0	34	42	14	15	68	9	6
ESSEX	93	170	5	121	90	190	30	65
GLOUCESTER	2	0	4	19	8	5	6	18
HUDSON	10	240	64	86	240	110	38	28
HUNTERDON	0	0	0	0	1	0	0	1
MERCER	98	210	18	44	131	78	18	58
MIDDLESEX	0	35	78	41	63	0	10	1
MONMOUTH	9	23	2	21	21	5	2	28
MORRIS	0	3	2	2	1	0	3	0
OCEAN	0	151	0	3	10	8	4	11
PASSAIC	60	70	0	8	41	31	10	3
SALEM	0	5	1	2	3	1	0	3
SOMERSET	92	35	26	19	37	29	3	0
SUSSEX	0	1	1	4	0	0	2	1
UNION	150	42	0	36	47	31	20	0
WARREN	0	5	0	4	3	0	0	0
STATE TOTAL	766	1246	377	530	907	621	202	257

Data is derived from NJ Division of Family Development's FAMIS Reports RM064-01 & RM703-51, AdHoc Reports 5549 & 5598 and SDW Report WR00022WZ_CC

**DIVISION OF FAMILY DEVELOPMENT CURRENT PROGRAM STATISTICS
APRIL 2024**

ACRONYMS

EMERGENCY ASSISTANCE (EA) - Payments to those eligible for WFNJ/TANF or WFNJ/GA, authorized during the 30 consecutive days immediately following the emergency (defined as a substantial loss of shelter, food, clothing, or household furnishings by fire, flood or other similar disaster) or if eligible individual or family is in an imminent or actual state of homelessness.

NJ SNAP - Formerly the Food Stamp Program, now known as NJ SNAP (NJ Supplemental Nutrition Assistance Program) authorized by Congress as a nutritional supplement program to provide low income households with more food of greater variety and better nutrition. Program eligibility is based on household income, resources, and expenses for medical, shelter, and dependent care. CWA staff refers certain recipients to the New Jersey Department of Labor for participation in the Food Stamp Employment and Training Program.

FAMIS: Family Assistance Management Information System

GAAS: General Assistance Automated System

NJKIDS: New Jersey Kids Deserve Support (Child Support Information Management System)

NJ MMIS SHARED DATA WAREHOUSE: The Shared Data Warehouse (SDW) is the repository for New Jersey's DFD and Medicaid data. Since 2003, OptumInsight has administered the SDW and provided access to the data through a reporting tool known as Business Objects.

OMEGA: Online Management of Economic Goal Achievement

SSI-EA: Supplemental Security Income-Emergency Assistance

WFNJ: Work First New Jersey - Fully implemented July 1, 1997, this is New Jersey's welfare reform program which responds to the requirements of the Federal Personal Responsibility and Work Opportunity Reconciliation Act (**PRWORA**) of 1996. PRWORA established Temporary Assistance for Needy Families (**TANF**) as the replacement for AFDC cash assistance. WFNJ includes two segments, **WFNJ/TANF** for families with children, and **WFNJ/GA** (General Assistance) for single adults and couples without dependent children. WFNJ emphasizes achieving self-sufficiency and limits lifetime receipt of financial assistance to a total of five years.

**DIVISION OF FAMILY DEVELOPMENT CURRENT PROGRAM STATISTICS
APRIL 2024**

EXPLANATORY NOTES

The Department of Human Services Division of Family Development provides basic income and an opportunity to achieve self-sufficiency for individuals and families served by the Division's programs. The Division provides leadership, direction and supervision to those public agencies responsible for administering those programs and plans for and develops policies to promote self-sufficiency.

WFNJ STATISTICAL SUMMARY (TABLE 17)

Employment Directed Activities (EDA) - From Activities Summary Report (OMEGA report # RM064). Unduplicated count of persons participating in Community Work Experience Program (CWEP), All Other Training, or Job Search.

Number of Persons Employed This Month, Still Receiving TANF - Individuals with open "empl" activity on OMEGA. Ad hoc report.

Participants Receiving Child Care Services - From Issuance Disbursement Summary (OMEGA report # RM703). Total number of active participants who show receipt of Child Care.

Number of Persons Closed on FAMIS Due to Employment - From FAMIS report #5549-RM-2

Post TANF and Receiving Child Care - Persons no longer in receipt of TANF but still receiving child care. From Share Data Warehouse Child Care case count based on Child Care payments (SDW report WR00022WZ_CC).