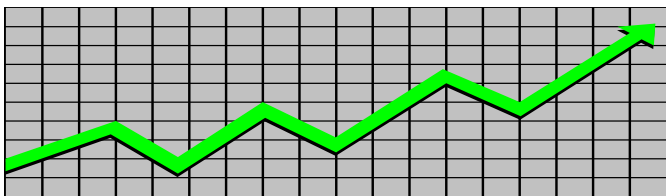


State of New Jersey
Department of Human Services
Division of Family Development

CURRENT PROGRAM STATISTICS



January 2017
Natasha Johnson, Director

DIVISION OF FAMILY DEVELOPMENT CURRENT PROGRAM STATISTICS

JANUARY 2017

TABLE OF CONTENTS

HIGHLIGHTS:

WFNJ/TANF.....	ii
NJ SNAP.....	ii
EMERGENCY ASSISTANCE.....	ii
GENERAL ASSISTANCE.....	iii
GA Emergency Assistance.....	iii
GA Program.....	iii
CHILD SUPPORT SERVICES.....	iii
WORK FIRST NEW JERSEY (WFNJ).....	iii
STATISTICS- BY STATE & COUNTY.....	1
Table 1: WFNJ/TANF Families & Persons (NJ Statewide) January 2015 to 2017.....	1
Table 2: WFNJ/TANF Families (by County)- January 2017.....	2
Table 2B: WFNJ/TANF Persons, Adults, & Children (by County)- January 2017.....	3
Table 3: TANF Work Participation Rates Over 12 Month Period (by County)- January 2017.....	4
Table 4: TANF Work Participation Rates Over 12 Month Period (NJ Statewide) January 2017.....	5
Table 5: NJ SNAP Households/Persons (NJ Statewide) January 2015 to 2017.....	6
Table 6: NJ SNAP Recipient Trends (NJ Statewide) January 2015 to 2017.....	7
Table 7: NJ SNAP Households/Persons (by County)- January 2017.....	8
Table 8: Emergency Assistance Program (NJ Statewide) January 2015 to 2017.....	9
Table 9: Emergency Assistance Program (by County)- January 2017.....	10
Table 10: General Assistance Program (NJ Statewide) January 2015 to 2017.....	11
Table 11: General Assistance Program (by County)- January 2017.....	12
Table 12: Child Support Services Distributions (NJ Statewide) FFY 2017.....	13
Table 13: Child Support Services Paternities Established- January 2017.....	14
Table 14: Child Support Services Cases With Orders- January 2017.....	15
Table 15: Child Support Services Collections On Current Support- January 2017.....	16
Table 16: Child Support Services Cases With Payments On Arrears- January 2017.....	17
Table 17: WFNJ Statistical Summary- January 2017.....	18
ACRONYMS.....	19
EXPLANATORY NOTES.....	20
WFNJ Statistical Summary (Table 17).....	20

DIVISION OF FAMILY DEVELOPMENT CURRENT PROGRAM STATISTICS JANUARY 2017

Each month the Division of Family Development publishes its program statistics for: WFNJ/TANF, NJ SNAP, Emergency Assistance, General Assistance, and Child Support Services. When possible, information is provided separately for children and adults. Many tables also provide trend data with information broken down by county for readers to consider. This report is compiled and prepared by The Bureau of Research & Reporting.

WFNJ/TANF

- As of the end of January, the TANF caseload had decreased by 5,794 cases, from 24,414 in January 2016 to 18,620 in January 2017, a decrease of 23.7%.
- The county where the family caseload percentage increased since January 2016 was Warren (9.7%).
- The counties with caseloads that decreased the most since January 2016 were Cape May (-34.3%), Hunterdon (-37.2%) and Ocean (-38.7%) .
- Of the WFNJ/TANF cases, 5,658 or 30.4% were child-only in January 2017.
- The counties with the most child-only cases were Essex (839), Camden (798) and Passaic (592).
- Essex (8,347), Passaic (6,198), Camden (5,912), Hudson (5,306) and Atlantic (3,452) counties had the greatest number of persons receiving TANF in January 2017.

NJ SNAP (formerly FOOD STAMPS)

- In January 2017, there were 409,002 households receiving NJ SNAP benefits. The number of NJ SNAP households decreased by 34,301 or 7.7%, since January 2016.
- There were 816,126 persons receiving NJ SNAP benefits as of January 2017, a decrease of 64,700 or 7.3% since January 2016.
- The counties having the highest caseload decrease since January 2016 are Burlington (-15.6%), Salem (-12.5%) and Gloucester (-12.3%).

EMERGENCY ASSISTANCE

- There were 2,367 families receiving Emergency Assistance (EA) in January 2017, a decrease of 1,118 or 32.1% since January 2016.
- In January 2017, EA payments were made for 487 SSI recipients.

**DIVISION OF FAMILY DEVELOPMENT CURRENT PROGRAM STATISTICS
JANUARY 2017**

GENERAL ASSISTANCE

GA Emergency Assistance

- There were 2,513 Emergency Assistance payments made to GA cases in January 2017, a decrease of 810 or 24.4% since January 2016.
- The counties that showed a percent increase in emergency assistance payments were Camden (8.3%) and Middlesex (16.3%).
- The counties that showed the highest percent decrease in emergency assistance payments were Hunterdon (-50.0%), Monmouth (-67.8%) and Cumberland (-75.5%).

GA Program

- The total numbers of cases receiving GA has decreased from 20,734 to 15,324 since January 2016, a decrease of 26.1%.
- There were 6,551 Employable GA and 8,773 Unemployable GA cases in January 2017.
- The counties that showed the highest percent decrease for GA cases since January 2016 were Atlantic (-34.5%), Burlington (-36.2%) and Passaic (-45.1%) .
- In January 2017, GA cases showed a 2.8 percent decrease since December 2016.

CHILD SUPPORT SERVICES (Quarterly Report)

- The total collection for the Child Support Services Program was about \$312 million from October 2016 to December 2016, a decrease of 2.5 percent over the same period for FFY 2016.
- Total distributions decreased 1.9% from December 2015.

WORK FIRST NEW JERSEY (WFNJ)

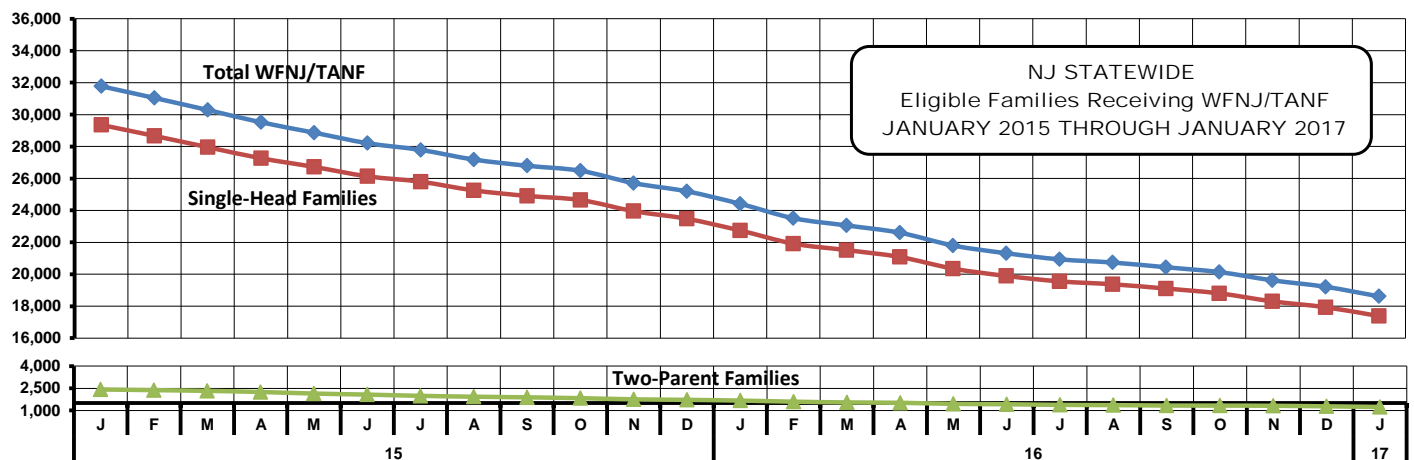
- During the report month of January 2017, there were 1,920 families in which at least one member was employed and an additional 353 families whose WFNJ assistance cases were closed due to employment - related earnings.
- The three counties with the greatest number of employed active WFNJ recipients were: Essex (488), Camden (263) and Passaic (235).
- There were 2,772 former TANF cases receiving post-TANF support in the form of child care assistance.

TABLE 1: WFNJ/TANF PROGRAM

STATEWIDE NUMBER OF APPLICATIONS AND TERMINATIONS DURING JANUARY 2017

NUMBER OF ELIGIBLE FAMILIES & PERSONS RECEIVING WFNJ/TANF FOR JANUARY 2017

JANUARY 2015 THROUGH JANUARY 2017												
		Cases Added	Cases Closed	Child-Only Cases ‡	Total Singl-Head Families	2- Parent Families	Total WFNJ/TANF Families	%CHNG (1 Yr.)	Total Persons	%CHNG (1 Yr.)	Adults	Children
2015	JAN	2,361	3,068	7,486	29,354	2,420	31,774	(4.7)	81,906	(4.6)	26,708	55,198
	FEB	2,050	2,776	7,454	28,665	2,376	31,041	(9.4)	79,839	(9.9)	25,963	53,876
	MAR	2,003	2,746	7,352	27,960	2,328	30,288	(11.6)	77,972	(11.9)	25,264	52,708
	APR	2,139	3,032	7,275	27,267	2,251	29,518	(14.0)	75,817	(14.4)	24,494	51,323
	MAY	2,101	2,869	7,156	26,723	2,145	28,868	(16.2)	73,929	(16.8)	23,857	50,072
	JUN	2,215	2,863	6,999	26,136	2,074	28,210	(17.2)	72,184	(18.0)	23,285	48,899
	JUL	2,268	2,812	6,931	25,797	1,990	27,787	(17.4)	70,950	(18.3)	22,846	48,104
	AUG	2,108	2,813	6,877	25,254	1,931	27,185	(19.1)	69,167	(20.2)	22,239	46,928
	SEP	2,263	2,767	6,787	24,908	1,888	26,796	(19.8)	68,235	(21.0)	21,897	46,338
	OCT	2,505	2,908	6,768	24,652	1,832	26,484	(20.8)	67,259	(22.1)	21,548	45,711
	NOV	1,888	2,665	6,696	23,955	1,754	25,709	(21.9)	65,212	(23.3)	20,767	44,445
	DEC	2,029	2,647	6,690	23,476	1,719	25,195	(22.3)	63,676	(24.0)	20,224	43,452
2015 Average		2,161	2,831	7,039	26,179	2,059	28,238		72,179		23,258	48,921
2016	JAN	1,774	2,617	6,569	22,745	1,669	24,414	(23.2)	61,590	(24.8)	19,514	42,076
	FEB	1,663	2,558	6,479	21,919	1,594	23,513	(24.3)	58,994	(26.1)	18,628	40,366
	MAR	1,922	2,516	6,469	21,516	1,543	23,059	(23.9)	57,608	(26.1)	18,133	39,475
	APR	1,788	2,363	6,357	21,085	1,520	22,605	(23.4)	56,458	(25.5)	17,768	38,690
	MAY	1,763	2,568	6,216	20,357	1,446	21,803	(24.5)	54,214	(26.7)	17,033	37,181
	JUN	1,839	2,417	6,094	19,898	1,421	21,319	(24.4)	52,864	(26.8)	16,646	36,218
	JUL	1,938	2,445	5,987	19,558	1,378	20,936	(24.7)	51,942	(26.8)	16,327	35,615
	AUG	1,924	2,146	5,931	19,374	1,363	20,737	(23.7)	51,450	(25.6)	16,169	35,281
	SEP	1,943	2,360	5,912	19,108	1,333	20,441	(23.7)	50,626	(25.8)	15,862	34,764
	OCT	1,701	2,090	5,858	18,807	1,331	20,138	(24.0)	49,962	(25.7)	15,611	34,351
	NOV	1,614	2,222	5,766	18,305	1,317	19,622	(23.7)	48,737	(25.3)	15,173	33,564
	DEC	1,592	2,088	5,762	17,937	1,280	19,217	(23.7)	47,656	(25.2)	14,735	32,921
2016 Average		1,788	2,366	6,117	20,051	1,433	21,484		53,508		16,800	36,709
2017	JAN	1,479	2,069	5,658	17,384	1,236	18,620	(23.7)	46,466	(24.6)	14,198	32,268



Data is derived from NJ MMIS Shared Data Warehouse Issuance files.
Effective July 2013 this data query source was converted to the SDW

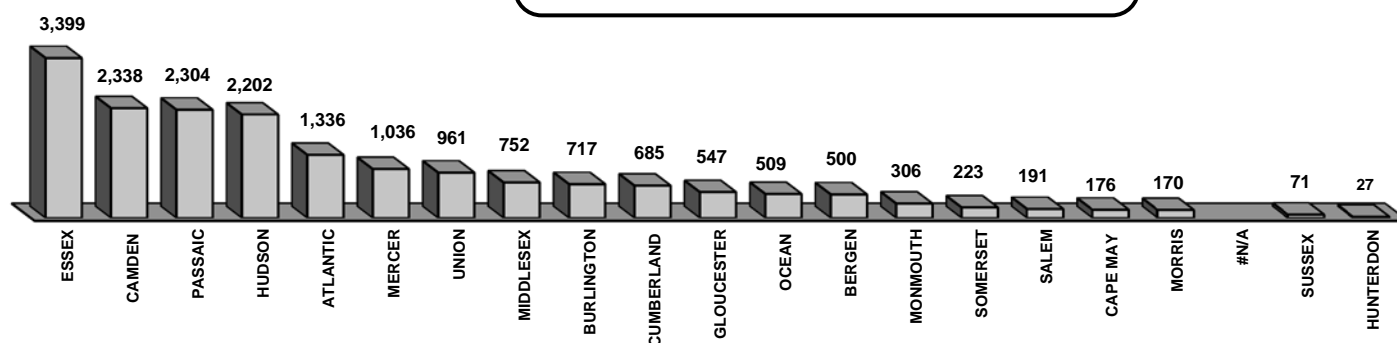
‡ Child-only cases are defined as families in which no eligible adult receives TANF program benefits, yet the family continues to be headed by at least one of the biological parents, or grandparents, or other appropriate adult.

Table 2
WFNJ/TANF
PROGRAM

NUMBER OF APPLICATIONS AND TERMINATIONS BY COUNTY DURING JANUARY 2017
NUMBER OF ELIGIBLE FAMILIES RECEIVING WFNJ/TANF REPORTED FOR JANUARY 2017

County	Cases Added	Cases Closed**	Child-		Total		Total		% Chng (3 Mon)	% Chng (1 Yr)
			Only Cases ‡	1-Adult Cases	Singl-Head Families	2-Parent Families	WFNJ/TANF Families			
ATLANTIC	86	112	406	803	1,209	127	1,336	(1.0)	(20.5)	
BERGEN	45	80	106	351	457	43	500	(11.0)	(30.4)	
BURLINGTON	94	83	219	453	672	45	717	4.7	(26.2)	
CAMDEN	159	201	798	1,403	2,201	137	2,338	(0.8)	(18.3)	Δ
CAPE MAY	13	31	57	109	166	10	176	(11.6)	(34.3)	*
CUMBERLAND	82	70	288	344	632	53	685	3.3	(27.7)	
ESSEX	338	406	839	2,390	3,229	170	3,399	(7.4)	(26.8)	
GLOUCESTER	44	51	179	312	491	56	547	(1.3)	(19.0)	
HUDSON	172	310	583	1,455	2,038	164	2,202	(8.8)	(25.2)	
HUNTERDON	5	2	5	19	24	3	27	3.8	(37.2)	*
MERCER	61	107	395	592	987	49	1,036	(5.3)	(26.6)	
MIDDLESEX	62	86	353	371	724	28	752	(8.4)	(21.9)	
MONMOUTH	20	40	132	166	298	8	306	(4.7)	(23.3)	
MORRIS	9	25	48	103	151	19	170	(0.6)	(5.0)	Δ
OCEAN	55	64	169	301	470	39	509	(8.3)	(38.7)	*
PASSAIC	104	192	592	1,560	2,152	152	2,304	(5.2)	(20.1)	
SALEM	24	35	67	111	178	13	191	(8.6)	(20.4)	
SOMERSET	15	25	83	131	214	9	223	(6.7)	(25.2)	
SUSSEX	8	6	20	47	67	4	71	(1.4)	(26.0)	
UNION	70	124	273	596	869	92	961	(8.8)	(20.3)	
WARREN	13	19	46	109	155	15	170	(3.4)	9.7	Δ
NJ TOTAL	1,479	2,069	5,658	11,726	17,384	1,236	18,620	(5.1)	(23.7)	

Total WFNJ/TANF Families
JANUARY 2017
By County



Data is derived from NJ MMIS Shared Data Warehouse Issuance files.

Effective July 2013 this data query source was converted to the SDW

‡ Child-only cases are defined as families in which no eligible adult receives TANF program benefits, yet the family continues to be headed by at least one of the biological parents, or grandparents, or other appropriate adult

** "Cases closed" include cases that received a benefit in the prior month, but did not receive any TANF benefit for the report month.

"Δ=higher caseload % change

"*=lower caseload % change

Table 2B

WFNJ/TANF

PROGRAM

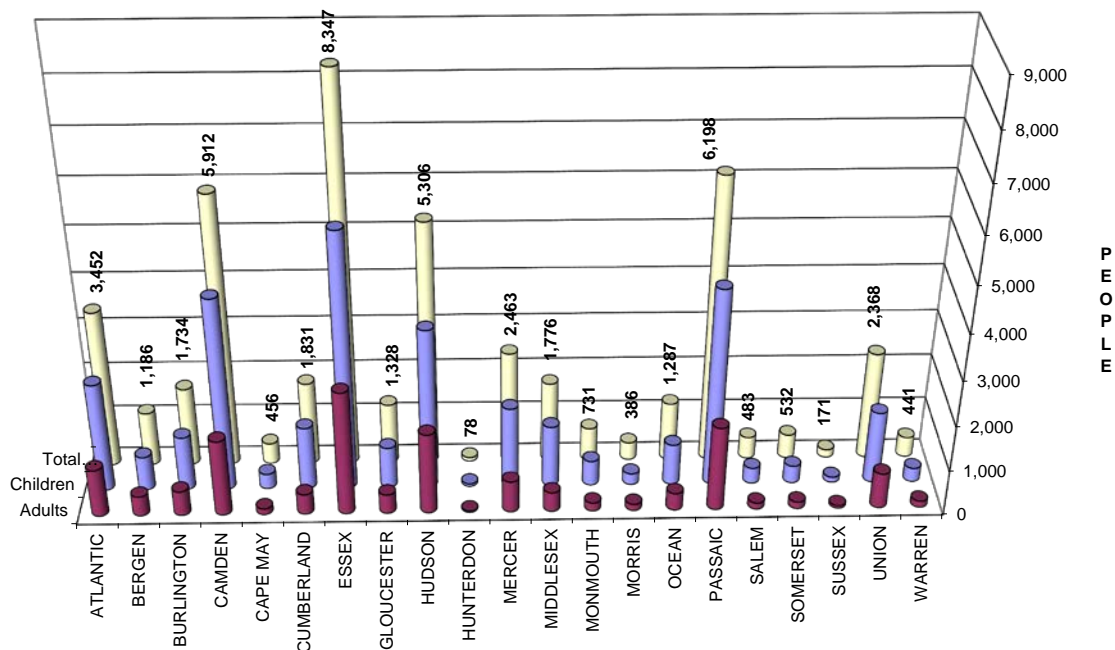
Δ= ↑ Caseload %

*= ↓ Caseload %

NUMBER OF PARTICIPATING PERSONS, ADULTS, AND CHILDREN BY COUNTY FOR JANUARY 2017

PERSONS

County	Adults	Children	Child/Adult Ratio	Total Persons	% Chng (1 Yr)	Persons Per Case
ATLANTIC	1,057	2,395	2.27	3,452	(21.0)	2.58
BERGEN	437	749	1.71	1,186	(32.7)	2.37
BURLINGTON	543	1,191	2.19	1,734	(28.7)	2.42
CAMDEN	1,677	4,235	2.53	5,912	(17.4) Δ	2.53
CAPE MAY	129	327	2.53	456	(35.0) *	2.59
CUMBERLAND	450	1,381	3.07	1,831	(28.6)	2.67
ESSEX	2,730	5,617	2.06	8,347	(29.4)	2.46
GLOUCESTER	424	904	2.13	1,328	(20.3)	2.43
HUDSON	1,783	3,523	1.98	5,306	(23.0)	2.41
HUNTERDON	25	53	2.12	78	(33.3) *	2.89
MERCER	690	1,773	2.57	2,463	(27.4)	2.38
MIDDLESEX	427	1,349	3.16	1,776	(22.5)	2.36
MONMOUTH	182	549	3.02	731	(24.3)	2.39
MORRIS	141	245	1.74	386	(9.2) Δ	2.27
OCEAN	379	908	2.40	1,287	(42.9) *	2.53
PASSAIC	1,864	4,334	2.33	6,198	(20.2)	2.69
SALEM	137	346	2.53	483	(21.5)	2.53
SOMERSET	149	383	2.57	532	(28.2)	2.39
SUSSEX	55	116	2.11	171	(32.1)	2.41
UNION	780	1,588	2.04	2,368	(21.3)	2.46
WARREN	139	302	2.17	441	11.9 Δ	2.59
NJ TOTAL	14,198	32,268	2.27	46,466	(24.6)	2.50



Data is derived from NJ MMIS Shared Data Warehouse Issuance files.
Effective July 2013 this data query source was converted to the SDW

TABLE 3

**Work Participation Rates Achieved Over 12 Month Period
Ending With JANUARY 2017**

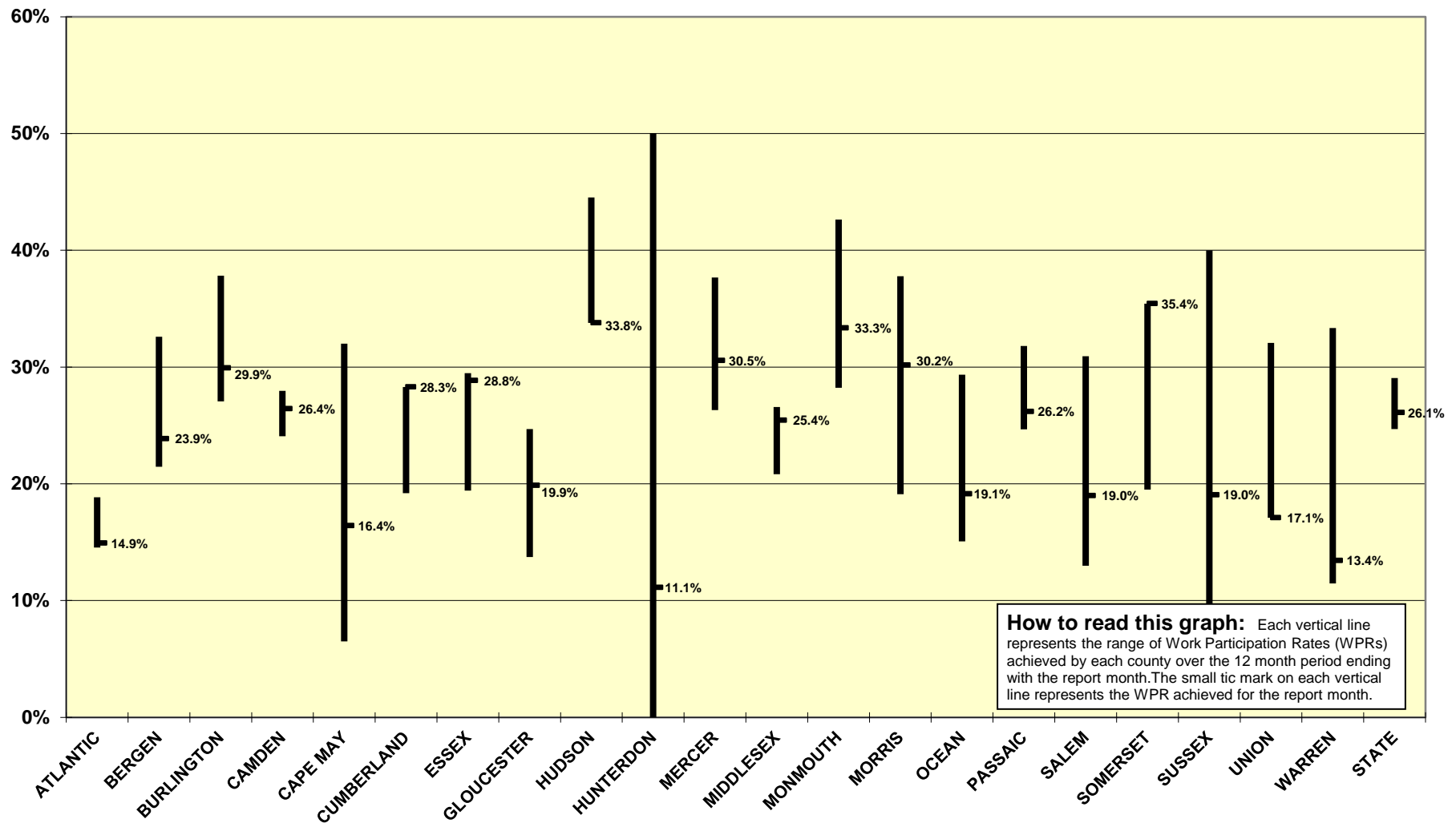
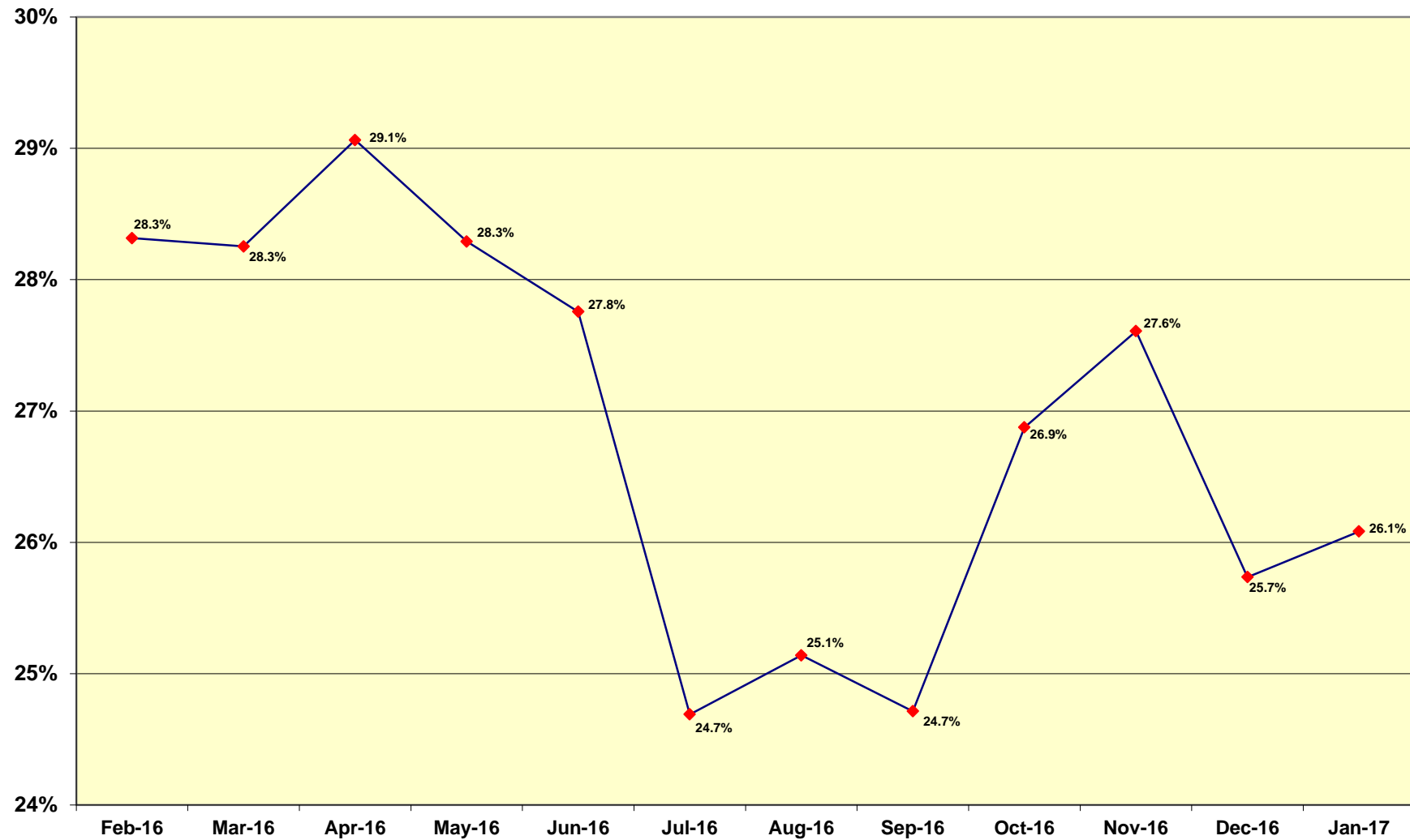


TABLE 4

**WFNJ/TANF Work Participation Rates
for 12-Month Period Ending with JANUARY 2017 Statewide**



* The Work Participation rate measures the number of countable Temporary Assistance for Needy Families (TANF) participants based on federal formula. The reported rate is considered to be preliminary until officially calculated by the federal government soon after the close of each federal fiscal year.

Table 5
NJ SNAP
(FOOD STAMPS)

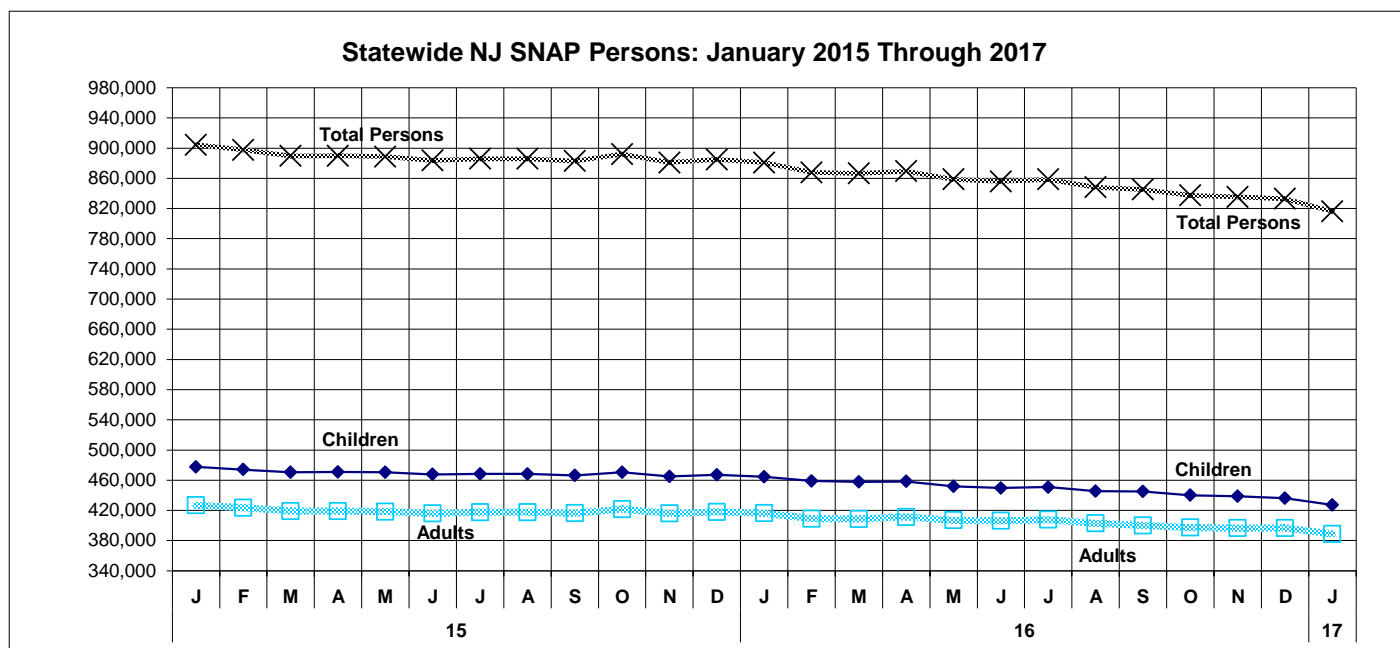
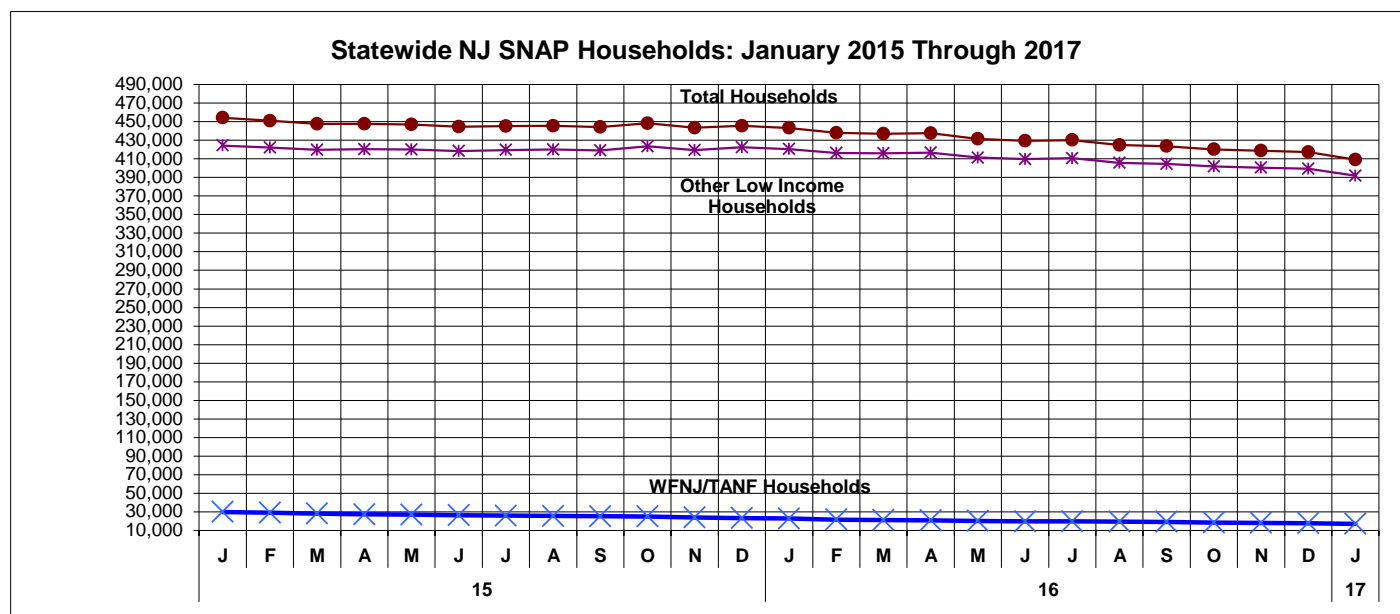
NUMBER OF PARTICIPATING HOUSEHOLDS, PERSONS, ADULTS AND CHILDREN FOR JANUARY 2017 (STATEWIDE)

		JANUARY 2015 THROUGH JANUARY 2017							
		HOUSEHOLDS				PERSONS			
		WFNJ/ TANF	Other low income	TOTAL	% CHNG (1 Yr.)	Adults	Children	TOTAL	% CHNG (1 Yr.)
2015	JAN	29,786	424,460	454,246	6.5%	477,604	426,814	904,418	6.0%
	FEB	28,890	422,197	451,087	5.7%	474,125	423,563	897,688	5.1%
	MAR	27,924	419,686	447,610	3.6%	470,613	419,099	889,712	3.0%
	APR	27,282	420,380	447,662	2.0%	470,743	419,096	889,839	1.5%
	MAY	26,963	420,067	447,030	0.6%	470,393	418,347	888,740	0.2%
	JUN	26,147	418,559	444,706	0.4%	467,732	415,927	883,659	0.1%
	JUL	25,731	419,621	445,352	-0.8%	468,342	417,557	885,899	-1.0%
	AUG	25,425	420,195	445,620	-1.5%	468,265	417,563	885,828	-1.8%
	SEP	25,122	419,181	444,303	-1.2%	466,474	416,349	882,823	-1.6%
	OCT	24,881	423,504	448,385	-1.3%	470,446	421,700	892,146	-1.4%
	NOV	23,856	419,586	443,442	-2.6%	464,987	415,952	880,939	-2.9%
	DEC	23,235	422,453	445,688	-2.0%	467,065	417,872	884,937	-2.4%
2015 Average		26,270	420,824	447,094		469,732	419,153	888,886	
2016	JAN	22,704	420,599	443,303	-2.4%	464,619	416,207	880,826	-2.6%
	FEB	21,540	416,382	437,922	-2.9%	458,883	408,965	867,848	-3.3%
	MAR	20,936	416,167	437,103	-2.3%	457,814	408,604	866,418	-2.6%
	APR	20,886	416,683	437,569	-2.3%	458,373	411,189	869,562	-2.3%
	MAY	20,066	411,401	431,467	-3.5%	451,706	406,955	858,661	-3.4%
	JUN	19,521	409,831	429,352	-3.5%	449,541	406,259	855,800	-3.2%
	JUL	19,521	410,696	430,217	-3.4%	450,900	407,672	858,572	-3.1%
	AUG	19,335	405,719	425,054	-4.6%	445,381	402,834	848,215	-4.2%
	SEP	19,095	404,660	423,755	-4.6%	445,123	400,055	845,178	-4.3%
	OCT	18,374	401,887	420,261	-6.3%	440,110	397,229	837,339	-6.1%
	NOV	18,083	400,647	418,730	-5.6%	438,718	396,519	835,237	-5.2%
	DEC	17,706	399,542	417,248	-6.4%	436,173	396,733	832,906	-5.9%
2016 Average		19,814	409,518	429,332		449,778	404,935	854,714	
2017	JAN	17,044	391,958	409,002	-7.7%	427,349	388,777	816,126	-7.3%

This Table is based on those Households & Persons that received SNAP issuances (benefits) during the month.

Data is derived from NJ MMIS Shared Data Warehouse.
Effective July 2013 this data query source was converted to the SDW.

**TABLE 6: NJ SNAP (FOOD STAMPS)
TRENDS FOR PARTICIPATING HOUSEHOLDS & PERSONS
JANUARY 2015 THROUGH JANUARY 2017 (STATEWIDE)**

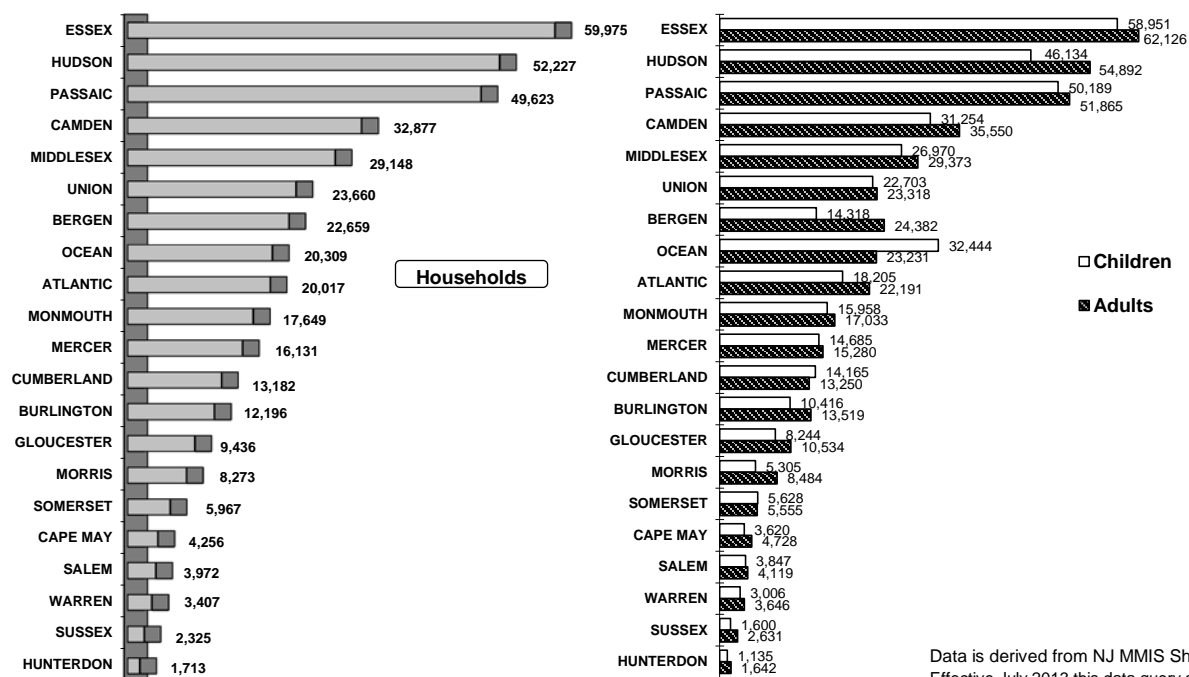


Data is derived from NJ MMIS Shared Data Warehouse.
Effective July 2013 this data query source was converted to the SDW.

Table 7
NJ SNAP**NUMBER OF PARTICIPATING HOUSEHOLDS, PERSONS, ADULTS
AND CHILDREN BY COUNTY FOR JANUARY 2017**

Δ= ↑ Caseload %
*= ↓ Caseload %

County	HOUSEHOLDS				PERSONS			
	WFNJ/ TANF	Other low income	TOTAL	% Chng (1 Yr)	Adults	Children	TOTAL	% Chng (1 Yr)
ATLANTIC	1,177	18,840	20,017	(11.8)	22,191	18,205	40,396	(10.7)
BERGEN	484	22,175	22,659	(3.2) Δ	24,382	14,318	38,700	(4.2) Δ
BURLINGTON	630	11,566	12,196	(15.6) *	13,519	10,416	23,935	(14.6) *
CAMDEN	2,089	30,788	32,877	(5.6)	35,550	31,254	66,804	(4.8)
CAPE MAY	176	4,080	4,256	(9.8)	4,728	3,620	8,348	(8.7)
CUMBERLAND	652	12,530	13,182	(9.6)	13,250	14,165	27,415	(9.7)
ESSEX	3,243	56,732	59,975	(7.7)	62,126	58,951	121,077	(6.9)
GLOUCESTER	458	8,978	9,436	(12.3) *	10,534	8,244	18,778	(13.1) *
HUDSON	1,920	50,307	52,227	(9.3)	54,892	46,134	101,026	(8.7)
HUNTERDON	28	1,685	1,713	(10.9)	1,642	1,135	2,777	(11.2)
MERCER	957	15,174	16,131	(7.2)	15,280	14,685	29,965	(7.1)
MIDDLESEX	736	28,412	29,148	(3.1) Δ	29,373	26,970	56,343	(3.5) Δ
MONMOUTH	295	17,354	17,649	(8.6)	17,033	15,958	32,991	(8.0)
MORRIS	143	8,130	8,273	(9.3)	8,484	5,305	13,789	(9.9)
OCEAN	475	19,834	20,309	(11.1)	23,231	32,444	55,675	(9.2)
PASSAIC	2,150	47,473	49,623	(4.2) Δ	51,865	50,189	102,054	(3.4) Δ
SALEM	161	3,811	3,972	(12.5) *	4,119	3,847	7,966	(12.5) *
SOMERSET	212	5,755	5,967	(10.1)	5,555	5,628	11,183	(10.3)
SUSSEX	77	2,248	2,325	(5.6)	2,631	1,600	4,231	(4.7)
UNION	820	22,840	23,660	(7.2)	23,318	22,703	46,021	(7.8)
WARREN	161	3,246	3,407	(8.8)	3,646	3,006	6,652	(9.1)
NJ TOTAL	17,044	391,958	409,002	(7.7)	427,349	388,777	816,126	(7.3)

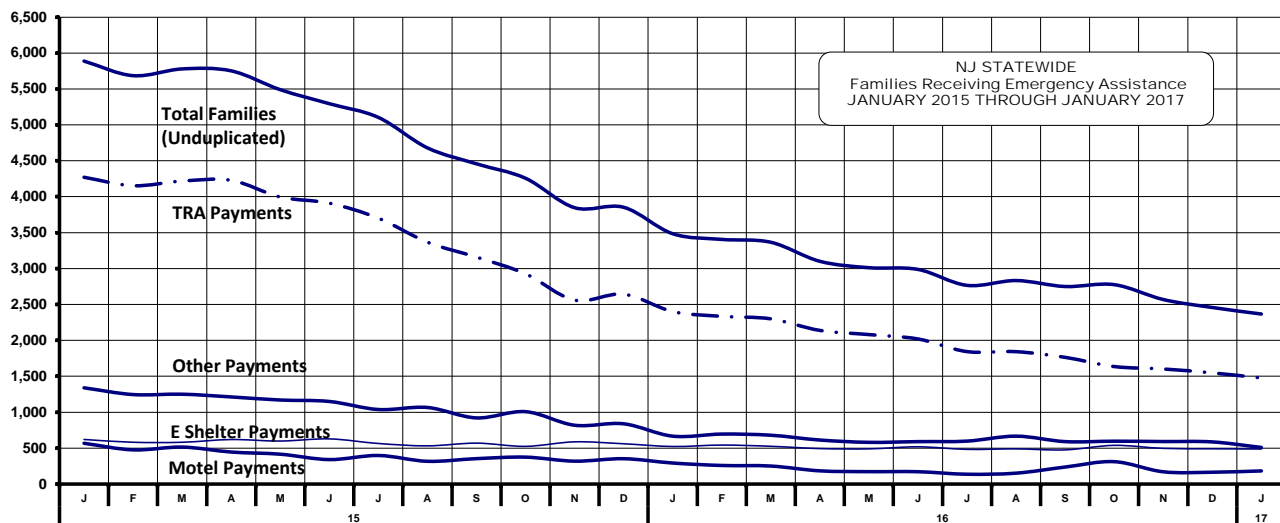
Total NJ SNAP Recipients
JANUARY 2017 By County

Data is derived from NJ MMIS Shared Data Warehouse
Effective July 2013 this data query source was converted to the SDW

Table 8

TOTAL NUMBER OF ELIGIBLE FAMILIES RECEIVING EMERGENCY ASSISTANCE PAYMENTSEMERGENCY
ASSISTANCE
(STATEWIDE)**JANUARY 2015 THROUGH JANUARY 2017 - STATEWIDE**

		TOTAL WFNJ/EA		Temp Rent Asst.		Motel Housing		Shelter/Transitional Housing		Other EA	
		Families (Undupl)	% CHNG (1 YR)	Payments (Undupl)	% CHNG (1 YR)	Payments (Undupl)	% CHNG (1 YR)	Payments (Undupl)	% CHNG (1 YR)	Payments (Undupl)	% CHNG (1 YR)
2015	JAN	5,888	-3.8%	4,271	-5.5%	568	15.0%	621	6.0%	1,340	4.8%
	FEB	5,685	-4.2%	4,153	-7.2%	476	-4.6%	582	1.9%	1,246	14.5%
	MAR	5,779	-12.0%	4,218	-9.2%	515	-24.3%	582	-11.1%	1,251	-24.8%
	APR	5,752	-13.4%	4,228	-11.7%	446	-24.1%	620	-5.2%	1,213	-26.3%
	MAY	5,490	-18.0%	3,996	-17.6%	416	-27.1%	599	-8.7%	1,170	-26.3%
	JUN	5,295	-19.0%	3,910	-17.7%	341	-33.4%	629	-5.0%	1,150	-19.9%
	JUL	5,104	-23.0%	3,701	-22.0%	398	-32.1%	565	-9.3%	1,038	-39.0%
	AUG	4,680	-26.5%	3,367	-26.8%	317	-41.0%	532	-8.4%	1,066	-29.2%
	SEP	4,458	-31.9%	3,159	-28.9%	354	-43.8%	570	-19.0%	921	-48.1%
	OCT	4,257	-36.0%	2,927	-37.0%	375	-44.4%	525	-15.6%	1,008	-42.0%
	NOV	3,847	-37.0%	2,560	-41.4%	319	-39.9%	588	-7.0%	819	-38.5%
	DEC	3,853	-37.8%	2,643	-40.1%	353	-38.2%	561	-12.8%	839	-41.9%
2015 Average		5,007		3,594		407		581		1,088	
2016	JAN	3,485	-40.8%	2,402	-43.8%	293	-48.4%	523	-15.8%	667	-50.2%
	FEB	3,406	-40.1%	2,335	-43.8%	259	-45.6%	543	-6.7%	696	-44.1%
	MAR	3,366	-41.8%	2,300	-45.5%	251	-51.3%	526	-9.6%	680	-45.6%
	APR	3,101	-46.1%	2,139	-49.4%	184	-58.7%	494	-20.3%	613	-49.5%
	MAY	3,012	-45.1%	2,081	-47.9%	173	-58.4%	490	-18.2%	581	-50.3%
	JUN	2,988	-43.6%	2,020	-48.3%	172	-49.6%	519	-17.5%	591	-48.6%
	JUL	2,766	-45.8%	1,844	-50.2%	137	-65.6%	483	-14.5%	598	-42.4%
	AUG	2,833	-39.5%	1,843	-45.3%	152	-52.1%	490	-7.9%	667	-37.4%
	SEP	2,750	-38.3%	1,764	-44.2%	237	-33.1%	476	-16.5%	591	-35.8%
	OCT	2,776	-34.8%	1,636	-44.1%	312	-16.8%	539	2.7%	597	-40.8%
	NOV	2,569	-33.2%	1,602	-37.4%	171	-46.4%	497	-15.5%	592	-27.7%
	DEC	2,458	-36.2%	1,548	-41.4%	165	-53.3%	491	-12.5%	587	-30.0%
2016 Average		2,959		1,960		209		506		622	
2017	JAN	2,367	-32.1%	1,477	-38.5%	183	-37.5%	488	-6.7%	510	-23.5%



WFNJ/EA data is derived from NJ MMIS Shared Data Warehouse.
Effective July 2013 this data query source was converted to the SDW.

* Effective Feb '11 Transitional Housing Payments were removed from "Other EA Payments" and added to "Shelter Payments."

Table 9
EMERGENCY
ASSISTANCE
(BY COUNTY)

**NUMBER OF TOTAL ELIGIBLE FAMILIES RECEIVING EMERGENCY ASSISTANCE PAYMENTS
BY COUNTY (UNDULICATED CASES) JANUARY 2017**

County	TOTAL WFNJ/EA Families (Undupl)	% CHNG From Jan 16	Temp Rent Asst. Payments (Undupl)	Motel Housing Payments (Undupl)	Shelter/Transitional Housing Payments (Undupl)	Other WFNJ/EA Payments (Undupl)	SSI Recipients Receiving EA**
ATLANTIC	113	-31.1%	73	5	7	49	37
BERGEN	51	-64.3% *	40	0	0	15	8
BURLINGTON	122	-49.0%	32	20	70	19	11
CAMDEN	105	-11.0%	41	12	48	32	9
CAPE MAY	27	12.5% Δ	17	10	0	1	13
CUMBERLAND	3	-83.3% *	0	1	1	1	1
ESSEX	525	-20.5%	326	0	164	62	109
GLOUCESTER	36	-26.5%	20	2	10	12	15
HUDSON	191	-15.9%	125	7	33	39	11
HUNTERDON	5	-72.2% *	4	0	0	1	4
MERCER	139	-45.7%	80	3	42	48	58
MIDDLESEX	103	-20.8%	43	35	15	34	15
MONMOUTH	25	-49.0%	3	5	17	5	3
MORRIS	46	-8.0% Δ	24	9	2	16	23
OCEAN	115	-58.2%	74	38	0	30	24
PASSAIC	521	-30.9%	435	10	36	97	84
SALEM	4	-55.6%	0	0	0	4	1
SOMERSET	58	-34.8%	30	9	11	17	37
SUSSEX	17	-5.6% Δ	7	1	2	8	5
UNION	150	-16.7%	94	15	29	19	17
WARREN	11	-26.7%	9	1	1	1	2
NJ TOTAL	2,367	-32.1%	1,477	183	488	510	487

Δ= ↑ Caseload %

* = ↓ Caseload %

**SSI-EA includes pay codes 22 and 24, data is derived from NJ Division of Family Development FAMIS Report #FM430-03A

WFNJ/EA data is derived from NJ MMIS Shared Data Warehouse.

Effective July 2013 this data query source was converted to the SDW

**Number WFNJ Families Receiving EA by County
JANUARY 2017**

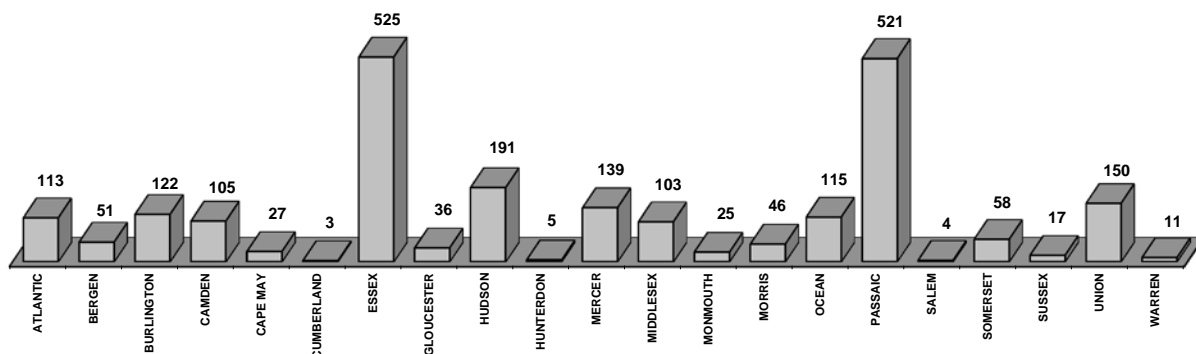
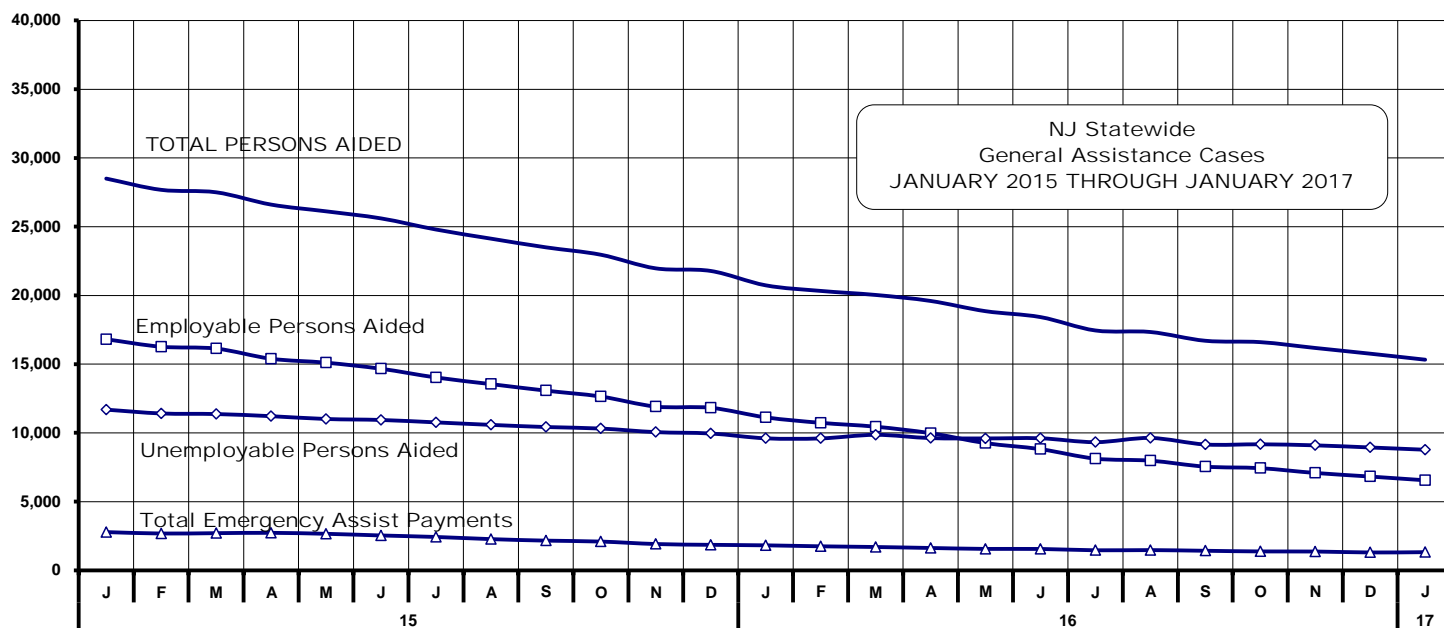


Table 10
GENERAL ASSISTANCE PROGRAM
**NUMBER OF EMPLOYABLE AND UNEMPLOYABLE RECIPIENTS
AND EMERGENCY ASSISTANCE PAYMENTS FOR JANUARY 2017 - STATEWIDE**
JANUARY 2015 THROUGH JANUARY 2017

		Total Cases						Emergency Assistance Cases			
		Employable	% Chng (1 Yr)	Unemployable	% Chng (1 Yr)	Total	% Chng (1 Yr)	Temporary Rental Assistance	Other GA-EA	Total	% Chng (1 Yr)
2015	JAN	16,810	-17.1%	11,689	-5.1%	28,499	-12.5%	2,782	2,395	5,177	2.8%
	FEB	16,267	-16.8%	11,413	-5.3%	27,680	-12.4%	2,679	2,218	4,897	2.7%
	MAR	16,131	-20.5%	11,370	-7.2%	27,501	-15.4%	2,705	2,601	5,306	-3.7%
	APR	15,393	-24.9%	11,214	-7.9%	26,607	-18.6%	2,728	2,404	5,132	-8.7%
	MAY	15,107	-25.7%	11,010	-9.7%	26,117	-19.7%	2,658	2,186	4,844	-12.1%
	JUN	14,664	-26.8%	10,939	-10.3%	25,603	-20.6%	2,537	2,201	4,738	-15.6%
	JUL	14,031	-27.3%	10,763	-11.2%	24,794	-21.1%	2,428	2,175	4,603	-8.8%
	AUG	13,548	-27.6%	10,582	-11.9%	24,130	-21.5%	2,271	1,822	4,093	-23.0%
	SEP	13,073	-29.2%	10,425	-13.3%	23,498	-22.9%	2,161	1,706	3,867	-25.4%
	OCT	12,644	-29.9%	10,315	-15.1%	22,959	-23.9%	2,093	1,828	3,921	-28.8%
	NOV	11,914	-31.4%	10,054	-16.2%	21,968	-25.2%	1,914	1,509	3,423	-26.1%
	DEC	11,825	-31.2%	9,954	-15.5%	21,779	-24.8%	1,856	1,876	3,732	-28.2%
2015 Average		14,284		10,811		25,095		2,401	2,077	4,478	
2016	JAN	11,130	-33.8%	9,604	-17.8%	20,734	-27.2%	1,819	1,504	3,323	-35.8%
	FEB	10,731	-34.0%	9,597	-15.9%	20,328	-26.6%	1,748	1,578	3,326	-32.1%
	MAR	10,449	-35.2%	9,585	-15.7%	20,034	-27.2%	1,698	1,654	3,352	-36.8%
	APR	9,977	-35.2%	9,620	-14.2%	19,597	-26.3%	1,627	1,612	3,239	-36.9%
	MAY	9,257	-38.7%	9,596	-12.8%	18,853	-27.8%	1,559	1,163	2,722	-43.8%
	JUN	8,816	-39.9%	9,607	-12.2%	18,423	-28.0%	1,556	1,365	2,921	-38.3%
	JUL	8,126	-42.1%	9,324	-13.4%	17,450	-29.6%	1,459	1,236	2,695	-41.5%
	AUG	7,978	-41.1%	9,360	-11.5%	17,338	-28.1%	1,473	1,389	2,862	-30.1%
	SEP	7,545	-42.3%	9,156	-12.2%	16,701	-28.9%	1,423	1,209	2,632	-31.9%
	OCT	7,432	-41.2%	9,169	-11.1%	16,601	-27.7%	1,375	1,427	2,802	-28.5%
	NOV	7,084	-40.5%	9,093	-9.6%	16,177	-26.4%	1,369	1,328	2,697	-21.2%
	DEC	6,823	-42.3%	8,938	-10.2%	15,761	-27.6%	1,300	1,251	2,551	-31.6%
2016 Average		8,779		9,387		18,166		1,534	1,393	2,927	
2017	JAN	6,551	-41.1%	8,773	-8.7%	15,324	-26.1%	1,323	1,190	2,513	-24.4%



Source: NJ Division of Family Development, GA Fiscal Unit

TABLE 11

GENERAL
ASSISTANCE
PROGRAM**EMPLOYABLE AND UNEMPLOYABLE CASES
AND EMERGENCY ASSISTANCE CASES RECEIVING PAYMENTS BY COUNTY**

JANUARY 2017

County	Total Cases						Emergency Assistance Cases			
	Employable	% Chng (From Jan 16)	Unemployable	% Chng (From Jan 16)	Total	% Chng (From Jan 16)	Temporary Rental Assist.	Other GA-EA	Total	% Chng (From Jan 16)
ATLANTIC	768	-45.8%	418	5.8%	1,186	-34.5% *	136	49	185	-8.4%
BERGEN	438	-43.0%	676	-5.3%	1,114	-24.8%	175	40	215	-27.4%
BURLINGTON	335	-60.1%	574	-1.9%	909	-36.2% *	48	141	189	-45.7%
CAMDEN	689	-17.1%	1,005	-8.2%	1,694	-12.0% Δ	66	117	183	8.3% Δ
CAPE MAY	50	-58.0%	100	-2.9%	150	-32.4%	31	33	64	-13.5%
CUMBERLAND	271	-30.5%	331	4.1%	602	-15.0%	6	7	13	-75.5% *
ESSEX	1,039	-38.1%	666	-5.9%	1,705	-28.5%	85	178	263	-29.7%
GLOUCESTER	261	-35.6%	318	7.8%	579	-17.3%	19	34	53	-1.9% Δ
HUDSON	618	-37.8%	1,188	-12.6%	1,806	-23.3%	90	63	153	-11.0%
HUNTERDON	35	-28.6%	70	-30.0%	105	-29.5%	16	12	28	-50.0% *
MERCER	235	-40.5%	541	-11.3%	776	-22.8%	70	71	141	-24.2%
MIDDLESEX	335	-23.7%	398	-1.7%	733	-13.2% Δ	96	132	228	16.3% Δ
MONMOUTH	47	-32.9%	185	-8.0%	232	-14.4%	3	16	19	-67.8% *
MORRIS	162	-42.8%	288	-17.7%	450	-28.9%	96	53	149	-16.8%
OCEAN	231	-26.4%	333	-17.0%	564	-21.1%	69	80	149	-40.4%
PASSAIC	408	-65.9%	800	-20.3%	1,208	-45.1% *	143	26	169	-34.7%
SALEM	41	-28.1%	130	3.2%	171	-6.6% Δ	9	3	12	-7.7%
SOMERSET	66	-18.5%	86	-12.2%	152	-15.1%	29	20	49	-9.3%
SUSSEX	71	-23.7%	42	0.0%	113	-16.3%	3	12	15	-44.4%
UNION	360	-34.1%	510	-10.8%	870	-22.2%	121	85	206	-20.5%
WARREN	91	-44.2%	114	-6.6%	205	-28.1%	12	18	30	-30.2%
NJ TOTAL	6,551	-41.1%	8,773	-8.7%	15,324	-26.1%	1,323	1,190	2,513	-24.4%

Δ = ↑ Caseload %

* = ↓ Caseload %

Source: NJ Division of Family Development, GA Fiscal Unit

TABLE 12
OFFICE OF CHILD
SUPPORT
SERVICES

OFFICE OF CHILD SUPPORT SERVICES

Quarterly Performance Report
State Summary
TITLE IV-D SOURCE COLLECTION REPORT
Comparison of Quarter-1 (FFY 16 vs. FFY 17)

COLLECTION SOURCE	TOTAL 10/1/2015 - 12/31/2015	% OF TOTAL COLLECTIONS	TOTAL 10/1/2016 - 12/31/2016	% OF TOTAL COLLECTIONS	DOLLAR CHANGE	% CHANGE
FEDERAL TAX	\$ 916,364	0.29%	\$ 675,634	0.22%	\$ (240,730)	-26.27%
STATE TAX	\$ 285,879	0.09%	\$ 381,981	0.12%	\$ 96,102	33.62%
UIB	\$ 7,726,784	2.41%	\$ 7,128,001	2.28%	\$ (598,783)	-7.75%
INC WITHHOLD	\$ 228,409,611	71.30%	\$ 222,860,001	71.32%	\$ (5,549,610)	-2.43%
FROM OTHER STATES	\$ 12,628,986	3.94%	\$ 12,144,878	3.89%	\$ (484,108)	-3.83%
ADMIN ENFORCEMENT	\$ 2,486,061	0.78%	\$ 3,176,070	1.02%	\$ 690,009	27.76%
OTHER	\$ 67,917,099	21.20%	\$ 66,113,984	21.16%	\$ (1,803,115)	-2.65%
TOTAL COLLECTIONS*	\$ 320,370,784	100%	\$ 312,480,549	100%	\$ (7,890,235)	-2.46%
DISTRIBUTED COLLECTIONS**	\$ 292,977,049		\$ 287,298,897		\$ (5,678,152)	-1.94%

* Includes collections on both current support and arrears.

** Includes collections on both current support and arrears; also includes money sent to other states.

SOURCE: NJKiDS (Based on Federal Quarterly Report of Collections - OCSE-34A except Distributed Collections)
Distributed Collections obtained from Federal Data Report - OCSE-157, which is reported annually to Congress and
used in the calculation of incentive dollars earned by each state.

TABLE 13

OFFICE OF CHILD
SUPPORT SERVICES**OFFICE OF CHILD SUPPORT SERVICES**

State Summary

TITLE IV-D PATERNITY ESTABLISHMENT REPORT

Comparison of January (FFY 16 vs. FFY 17)

County Office	JANUARY 2016			JANUARY 2017			Increase or Decrease (-) from FFY 2016 to FFY 2017
	Total Children Born Out of Wedlock*	Number of Paternities Established	Percent of Paternities Established	Total Children Born Out of Wedlock*	Number of Paternities Established	Percent of Paternities Established	
Atlantic	8,197	8,018	97.8%	7,829	7,678	98.1%	0.3%
Bergen	4,328	4,210	97.3%	4,054	3,976	98.1%	0.8%
Burlington	7,221	6,845	94.8%	6,626	6,374	96.2%	1.4%
Camden	22,742	21,156	93.0%	21,136	19,865	94.0%	1.0%
Cape May	1,766	1,729	97.9%	1,651	1,621	98.2%	0.3%
Cumberland	8,587	8,484	98.8%	8,072	8,019	99.3%	0.5%
Essex	36,952	33,641	91.0%	34,624	31,840	92.0%	0.9%
Gloucester	5,921	5,792	97.8%	5,567	5,468	98.2%	0.4%
Hudson	15,514	14,292	92.1%	14,097	13,196	93.6%	1.5%
Hunterdon	445	436	98.0%	411	403	98.1%	0.1%
Mercer	9,880	9,396	95.1%	9,260	8,879	95.9%	0.8%
Middlesex	9,178	8,823	96.1%	8,453	8,192	96.9%	0.8%
Monmouth	7,416	7,046	95.0%	6,947	6,658	95.8%	0.8%
Morris	1,947	1,896	97.4%	1,784	1,753	98.3%	0.9%
Ocean	6,399	6,147	96.1%	6,028	5,837	96.8%	0.8%
Passaic	15,787	14,537	92.1%	14,730	13,689	92.9%	0.9%
Salem	2,958	2,834	95.8%	2,907	2,807	96.6%	0.8%
Somerset	2,251	2,150	95.5%	2,018	1,953	96.8%	1.3%
Sussex	846	832	98.3%	755	748	99.1%	0.7%
Union	13,275	12,177	91.7%	12,706	11,805	92.9%	1.2%
Warren	1,270	1,249	98.3%	1,216	1,196	98.4%	0.0%
NJ TOTALS	182,880	171,690	93.9%	170,871	161,957	94.8%	0.9%

SOURCE: NJKiDS (Based on Federal Performance Measures - OCSE-157)

* Information on Out of Wedlock Births obtained from NJ Bureau of Vital Statistics

TABLE 14

OFFICE OF CHILD
SUPPORT SERVICES

OFFICE OF CHILD SUPPORT SERVICES

State Summary

TITLE IV-D REPORT OF CASES WITH ORDERS

Comparison of January (FFY 16 vs. FFY 17)

County Office	January 2016			January 2017			Increase or Decrease (-) from FFY 2016 to FFY 2017
	TOTAL CASES	CASES WITH ORDERS	% OF CASES WITH ORDERS	TOTAL CASES	CASES WITH ORDERS	% OF CASES WITH ORDERS	
Atlantic	14,435	12,449	86.2%	13,707	12,066	88.0%	1.8%
Bergen	13,871	13,026	93.9%	13,362	12,773	95.6%	1.7%
Burlington	16,419	13,887	84.6%	15,547	13,651	87.8%	3.2%
Camden	36,776	29,144	79.2%	34,968	28,547	81.6%	2.4%
Cape May	3,840	3,361	87.5%	3,677	3,224	87.7%	0.2%
Cumberland	13,738	12,892	93.8%	13,232	12,501	94.5%	0.6%
Essex	54,047	41,609	77.0%	52,490	40,513	77.2%	0.2%
Gloucester	12,082	11,183	92.6%	11,687	11,063	94.7%	2.1%
Hudson	28,689	21,738	75.8%	26,433	20,935	79.2%	3.4%
Hunterdon	1,834	1,722	93.9%	1,716	1,644	95.8%	1.9%
Mercer	17,141	14,349	83.7%	16,414	14,255	86.8%	3.1%
Middlesex	21,210	19,005	89.6%	20,098	18,543	92.3%	2.7%
Monmouth	16,814	15,707	93.4%	16,252	15,287	94.1%	0.6%
Morris	6,948	6,667	96.0%	6,713	6,433	95.8%	-0.1%
Ocean	17,387	16,032	92.2%	16,621	15,750	94.8%	2.6%
Passaic	27,221	19,621	72.1%	26,192	19,052	72.7%	0.7%
Salem	4,810	4,527	94.1%	4,753	4,536	95.4%	1.3%
Somerset	6,035	5,394	89.4%	5,733	5,217	91.0%	1.6%
Sussex	3,124	3,004	96.2%	3,015	2,912	96.6%	0.4%
Union	22,272	19,439	87.3%	21,345	19,236	90.1%	2.8%
Warren	3,445	3,114	90.4%	3,385	3,058	90.3%	-0.1%
NJ TOTALS	342,138	287,870	84.1%	327,340	281,196	85.9%	1.8%

SOURCE: NJKiDS (Based on Federal Performance Measures - OCSE-157)

TABLE 15

OFFICE OF CHILD
SUPPORT SERVICES**OFFICE OF CHILD SUPPORT SERVICES**

State Summary

TITLE IV-D COLLECTIONS ON CURRENT SUPPORT

Comparison of January (FFY 16 vs. FFY 17)

County Office	January 2016			January 2017			Increase or Decrease (-) from FFY 2016 to FFY 2017
	Total Current Support Due	Total Current Support Distributed	Total Collection Rate	Total Current Support Due	Total Current Support Distributed	Total Collection Rate	
Atlantic	\$4,210,052	\$2,684,342	63.8%	\$4,143,098	\$2,724,693	65.8%	2.0%
Bergen	\$9,576,711	\$7,090,002	74.0%	\$9,457,369	\$7,086,113	74.9%	0.9%
Burlington	\$6,693,125	\$4,495,675	67.2%	\$6,613,010	\$4,528,293	68.5%	1.3%
Camden	\$8,705,291	\$5,092,217	58.5%	\$8,537,121	\$5,131,100	60.1%	1.6%
Cape May	\$1,301,588	\$833,790	64.1%	\$1,191,186	\$820,371	68.9%	4.8%
Cumberland	\$3,430,315	\$1,932,924	56.3%	\$3,261,489	\$1,905,659	58.4%	2.1%
Essex	\$13,654,609	\$7,518,218	55.1%	\$13,246,610	\$7,586,396	57.3%	2.2%
Gloucester	\$4,724,576	\$2,920,856	61.8%	\$4,626,536	\$3,004,568	64.9%	3.1%
Hudson	\$8,266,445	\$5,390,974	65.2%	\$8,197,599	\$5,454,194	66.5%	1.3%
Hunterdon	\$1,572,761	\$1,206,472	76.7%	\$1,515,754	\$1,185,038	78.2%	1.5%
Mercer	\$5,009,945	\$3,009,878	60.1%	\$4,964,640	\$3,005,701	60.5%	0.5%
Middlesex	\$9,201,796	\$6,039,225	65.6%	\$9,146,820	\$6,087,694	66.6%	0.9%
Monmouth	\$8,720,491	\$6,080,718	69.7%	\$8,567,281	\$6,081,234	71.0%	1.3%
Morris	\$5,053,962	\$3,662,622	72.5%	\$5,045,657	\$3,667,399	72.7%	0.2%
Ocean	\$7,773,530	\$5,491,633	70.6%	\$7,637,009	\$5,503,137	72.1%	1.4%
Passaic	\$7,446,822	\$4,446,246	59.7%	\$7,503,777	\$4,623,879	61.6%	1.9%
Salem	\$1,368,014	\$777,514	56.8%	\$1,299,058	\$777,182	59.8%	3.0%
Somerset	\$3,731,482	\$2,841,926	76.2%	\$3,615,444	\$2,821,617	78.0%	1.9%
Sussex	\$2,048,286	\$1,531,890	74.8%	\$1,997,435	\$1,516,366	75.9%	1.1%
Union	\$7,704,326	\$4,839,895	62.8%	\$7,777,913	\$5,089,861	65.4%	2.6%
Warren	\$1,548,342	\$1,099,169	71.0%	\$1,490,688	\$1,079,122	72.4%	1.4%
NJ TOTALS	\$121,742,469	\$78,986,186	64.9%	\$119,835,493	\$79,679,617	66.5%	1.6%

SOURCE: NJKiDS (Based on Federal Performance Measures - OCSE-157)

TABLE 16

OFFICE OF CHILD
SUPPORT SERVICES**OFFICE OF CHILD SUPPORT SERVICES**

State Summary

TITLE IV-D CASES ARREARS COLLECTION REPORT

Comparison of January (FFY 16 vs. FFY 17)

County Office	January 2016			January 2017			Increase or Decrease (-) from FFY 2016 to FFY 2017
	Total Cases with Arrears	Total Amount Collected	Average Arrears Collection per Case	Total Cases with Arrears	Total Amount Collected	Average Arrears Collection per Case	
Atlantic	8,568	\$434,154	\$50.67	8,311	\$555,707	\$66.86	\$16.19
Bergen	8,634	\$858,206	\$99.40	8,512	\$945,044	\$111.02	\$11.63
Burlington	9,377	\$617,427	\$65.84	9,374	\$810,307	\$86.44	\$20.60
Camden	18,753	\$847,411	\$45.19	18,470	\$1,166,515	\$63.16	\$17.97
Cape May	2,339	\$139,106	\$59.47	2,287	\$191,439	\$83.71	\$24.24
Cumberland	8,760	\$364,318	\$41.59	8,530	\$490,784	\$57.54	\$15.95
Essex	29,568	\$1,470,266	\$49.72	28,200	\$1,800,536	\$63.85	\$14.12
Gloucester	7,814	\$436,182	\$55.82	7,803	\$585,574	\$75.04	\$19.22
Hudson	15,591	\$884,636	\$56.74	15,156	\$1,283,538	\$84.69	\$27.95
Hunterdon	1,053	\$79,911	\$75.89	1,036	\$150,969	\$145.72	\$69.83
Mercer	9,741	\$443,533	\$45.53	9,788	\$648,622	\$66.27	\$20.73
Middlesex	13,109	\$684,912	\$52.25	12,800	\$1,052,689	\$82.24	\$29.99
Monmouth	10,404	\$801,841	\$77.07	10,290	\$1,067,268	\$103.72	\$26.65
Morris	4,524	\$398,354	\$88.05	4,501	\$583,604	\$129.66	\$41.61
Ocean	10,738	\$748,932	\$69.75	10,726	\$978,570	\$91.23	\$21.49
Passaic	13,823	\$751,788	\$54.39	13,613	\$949,648	\$69.76	\$15.37
Salem	2,937	\$108,531	\$36.95	2,997	\$145,645	\$48.60	\$11.64
Somerset	3,573	\$284,057	\$79.50	3,542	\$423,564	\$119.58	\$40.08
Sussex	2,102	\$218,515	\$103.96	2,065	\$233,139	\$112.90	\$8.94
Union	13,686	\$713,849	\$52.16	13,491	\$929,819	\$68.92	\$16.76
Warren	2,122	\$130,872	\$61.67	2,104	\$170,123	\$80.86	\$19.18
NJ TOTALS	197,216	\$11,416,801	\$57.89	193,596	\$15,163,104	\$78.32	\$20.43

SOURCE:OCSE-157 Child Support Enforcement Annual Data Report

Table 17
WFNJ**WORK FIRST NEW JERSEY STATISTICAL SUMMARY****JANUARY 2017**

COUNTY	EMPLOYMENT DIRECTED ACTIVITIES			EMPLOYED OPEN (WFNJ RECIPIENT)	SUPPORT SERVICES ON ACTIVE CASE		CLOSED FOR EMPLOYMENT THIS MONTH	POST ASSISTANCE CHILD CARE
	CWEP	ALL	JOB		CHILD CARE	TRAINING REL. EXPENSES		
		OTHER	SEARCH					
		TRAINING						
ATLANTIC	125	126	30	124	51	256	20	91
BERGEN	59	2	59	32	35	53	15	84
BURLINGTON	76	19	44	100	76	106	15	169
CAMDEN	260	206	8	263	231	401	45	298
CAPE MAY	12	11	9	16	7	15	4	18
CUMBERLAND	88	49	94	29	26	72	5	69
ESSEX	418	530	108	488	417	730	82	639
GLOUCESTER	14	14	13	33	8	36	7	78
HUDSON	191	325	10	189	219	441	52	367
HUNTERDON	5	0	5	5	2	0	0	7
MERCER	185	60	120	126	98	108	23	149
MIDDLESEX	48	33	87	53	49	71	7	141
MONMOUTH	27	17	21	43	53	47	5	85
MORRIS	13	2	30	17	17	10	1	29
OCEAN	16	125	0	27	26	48	8	105
PASSAIC	495	279	96	235	247	293	40	199
SALEM	0	18	2	10	7	25	3	15
SOMERSET	39	11	15	28	21	26	2	57
SUSSEX	20	0	7	7	9	5	1	15
UNION	276	80	2	75	93	139	13	130
WARREN	17	19	3	20	16	4	5	27
STATE	2,384	1,926	763	1,920	1,708	2,886	353	2,772

Data is derived from NJ Division of Family Development's FAMIS Reports RM064-01 & RM703-51, AdHoc Reports 5549 & 5598 and SDW Report WR00022WZ_CC

**DIVISION OF FAMILY DEVELOPMENT CURRENT PROGRAM STATISTICS
JANUARY 2017**

ACRONYMS

EMERGENCY ASSISTANCE (EA) - Payments to those eligible for WFNJ/TANF or WFNJ/GA, authorized during the 30 consecutive days immediately following the emergency (defined as a substantial loss of shelter, food, clothing, or household furnishings by fire, flood or other similar disaster) or if eligible individual or family is in an imminent or actual state of homelessness.

NJ SNAP - Formerly the Food Stamp Program, now known as **NJ SNAP** (NJ Supplemental Nutrition Assistance Program) authorized by Congress as a nutritional supplement program to provide low income households with more food of greater variety and better nutrition. Program eligibility is based on household income, resources, and expenses for medical, shelter, and dependent care. CWA staff refers certain recipients to the New Jersey Department of Labor for participation in the Food Stamp Employment and Training Program.

FAMIS: Family Assistance Management Information System

GAAS: General Assistance Automated System

NJKIDS: New Jersey Kids Deserve Support (Child Support Information Management System)

NJ MMIS SHARED DATA WAREHOUSE: The Shared Data Warehouse (SDW) is the repository for New Jersey's DFD and Medicaid data. Since 2003, OptumInsight has administered the SDW and provided access to the data through a reporting tool known as Business Objects.

OMEGA: Online Management of Economic Goal Achievement

SSI-EA: Supplemental Security Income-Emergency Assistance

WFNJ: Work First New Jersey - Fully implemented July 1, 1997, this is New Jersey's welfare reform program which responds to the requirements of the Federal Personal Responsibility and Work Opportunity Reconciliation Act (**PRWORA**) of 1996. PRWORA established Temporary Assistance for Needy Families (**TANF**) as the replacement for AFDC cash assistance. WFNJ includes two segments, **WFNJ/TANF** for families with children, and **WFNJ/GA** (General Assistance) for single adults and couples without dependent children. WFNJ emphasizes achieving self-sufficiency and limits lifetime receipt of financial assistance to a total of five years.

**DIVISION OF FAMILY DEVELOPMENT CURRENT PROGRAM STATISTICS
JANUARY 2017**

EXPLANATORY NOTES

The Department of Human Services Division of Family Development provides basic income and an opportunity to achieve self-sufficiency for individuals and families served by the Division's programs. The Division provides leadership, direction and supervision to those public agencies responsible for administering those programs and plans for and develops policies to promote self-sufficiency.

WFNJ Statistical Summary (Table 17)

Employment Directed Activities (EDA) - From Activities Summary Report (OMEGA report # RM064). Unduplicated count of persons participating in Community Work Experience Program (CWEP), All Other Training, or Job Search.

Number of Persons Employed This Month, Still Receiving TANF Individuals with open "empl" activity on OMEGA. Ad hoc report.

Participants Receiving Child Care Services - From Issuance Disbursement Summary (OMEGA report # RM703). Total number of active participants who show receipt of **Child Care**.

Number of Persons Closed on FAMIS Due to Employment - From FAMIS report #5549-RM-2.

Post TANF and Receiving Child Care - Persons no longer in receipt of TANF but still receiving child care. From Share Data Warehouse Child Care case count based on Child Care payments (SDW report WR00022WZ_CC).