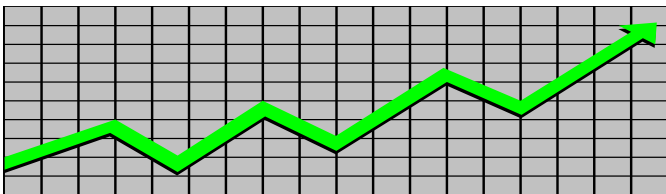


State of New Jersey
Department of Human Services
Division of Family Development

CURRENT PROGRAM STATISTICS



June 2017
Natasha Johnson, Director

**DIVISION OF FAMILY DEVELOPMENT CURRENT PROGRAM STATISTICS
JUNE 2017**

TABLE OF CONTENTS

HIGHLIGHTS:

WFNJ/TANF.....	ii
NJ SNAP.....	ii
EMERGENCY ASSISTANCE.....	ii
GENERAL ASSISTANCE.....	iii
GA Emergency Assistance.....	iii
GA Program.....	iii
CHILD SUPPORT SERVICES.....	iii
WORK FIRST NEW JERSEY (WFNJ).....	iii
STATISTICS- BY STATE & COUNTY.....	1
Table 1: WFNJ/TANF Families & Persons (NJ Statewide) June 2015 to 2017.....	1
Table 2: WFNJ/TANF Families (by County)- June 2017.....	2
Table 2B: WFNJ/TANF Persons, Adults, & Children (by County)- June 2017.....	3
Table 3: TANF Work Participation Rates Over 12 Month Period (by County)- June 2017.....	4
Table 4: TANF Work Participation Rates Over 12 Month Period (NJ Statewide) June 2017.....	5
Table 5: NJ SNAP Households/Persons (NJ Statewide) June 2015 to 2017.....	6
Table 6: NJ SNAP Recipient Trends (NJ Statewide) June 2015 to 2017.....	7
Table 7: NJ SNAP Households/Persons (by County)- June 2017.....	8
Table 8: Emergency Assistance Program (NJ Statewide) June 2015 to 2017.....	9
Table 9: Emergency Assistance Program (by County)- June 2017.....	10
Table 10: General Assistance Program (NJ Statewide) June 2015 to 2017.....	11
Table 11: General Assistance Program (by County)- June 2017.....	12
Table 12: Child Support Services Distributions (NJ Statewide) FFY 2017.....	13
Table 13: Child Support Services Paternities Established- June 2017.....	14
Table 14: Child Support Services Cases With Orders- June 2017.....	15
Table 15: Child Support Services Collections On Current Support- June 2017.....	16
Table 16: Child Support Services Cases With Payments On Arrears- June 2017.....	17
Table 17: WFNJ Statistical Summary- June 2017.....	18
ACRONYMS.....	19
EXPLANATORY NOTES.....	20
WFNJ Statistical Summary (Table 17).....	20

DIVISION OF FAMILY DEVELOPMENT CURRENT PROGRAM STATISTICS

JUNE 2017

Each month the Division of Family Development publishes its program statistics for: WFNJ/TANF, NJ SNAP, Emergency Assistance, General Assistance, and Child Support Services. When possible, information is provided separately for children and adults. Many tables also provide trend data with information broken down by county for readers to consider. This report is compiled and prepared by The Bureau of Research & Reporting.

WFNJ/TANF

- As of the end of June, the TANF caseload had decreased by 5,175 cases, from 21,319 in June 2016 to 16,144 in June 2017, a decrease of 24.3%.
- The county where the family caseload percentage increased since June 2016 was Warren (6.5%).
- The counties with caseloads that decreased the most since June 2016 were Bergen (-35.0%), Cape May (-45.1%) and Hunterdon (-45.7%) .
- Of the WFNJ/TANF cases, 5,115 or 31.7% were child-only in June 2017.
- The counties with the most child-only cases were Camden (762), Essex (715) and Passaic (542).
- Essex (6,818), Passaic (5,441), Camden (5,259), Hudson (4,445) and Atlantic (3,237) counties had the greatest number of persons receiving TANF in June 2017.

NJ SNAP (formerly FOOD STAMPS)

- In June 2017, there were 394,689 households receiving NJ SNAP benefits. The number of NJ SNAP households decreased by 34,663 or 8.1%, since June 2016.
- There were 787,356 persons receiving NJ SNAP benefits as of June 2017, a decrease of 68,444 or 8.0% since June 2016.
- The counties having the highest caseload decrease since June 2016 are Burlington (-12.9%), Cape May (-11.9%) and Essex (-11.0%).

EMERGENCY ASSISTANCE

- There were 2,057 families receiving Emergency Assistance (EA) in June 2017, a decrease of 931 or 31.2% since June 2016.
- In June 2017, EA payments were made for 476 SSI recipients.

**DIVISION OF FAMILY DEVELOPMENT CURRENT PROGRAM STATISTICS
JUNE 2017**

GENERAL ASSISTANCE

GA Emergency Assistance

- There were 2,406 Emergency Assistance payments made to GA cases in June 2017, a decrease of 515 or 17.6% since June 2016.
- The counties that showed the highest percent increase in emergency assistance payments were Middlesex (16.3%), Somerset (27.1%) and Warren (60.0%).
- The counties that showed the highest percent decrease in emergency assistance payments were Mercer (-40.7%), Monmouth (-69.8%) and Cumberland (-78.9%).

GA Program

- The total numbers of cases receiving GA has decreased from 18,423 to 14,381 since June 2016, a decrease of 21.9%.
- There were 6,029 Employable GA and 8,352 Unemployable GA cases in June 2017.
- The counties that showed a percent increase for GA cases were Somerset (3.8%) and Warren (5.9%) since June 2016.
- The counties that showed the highest percent decrease for GA cases since June 2016 were Burlington (-26.2%), Hudson (-27.2%) and Bergen (-27.8%).
- In June 2017, GA cases showed a 0.9 percent decrease since May 2017.

CHILD SUPPORT SERVICES (Quarterly Report)

- The total collection for the Child Support Services Program was about \$327 million from April 2017 to June 2017, a decrease of 2.9 percent over the same period for FFY 2016.
- Total distributions decreased 2.8% from June 2016.

WORK FIRST NEW JERSEY (WFNJ)

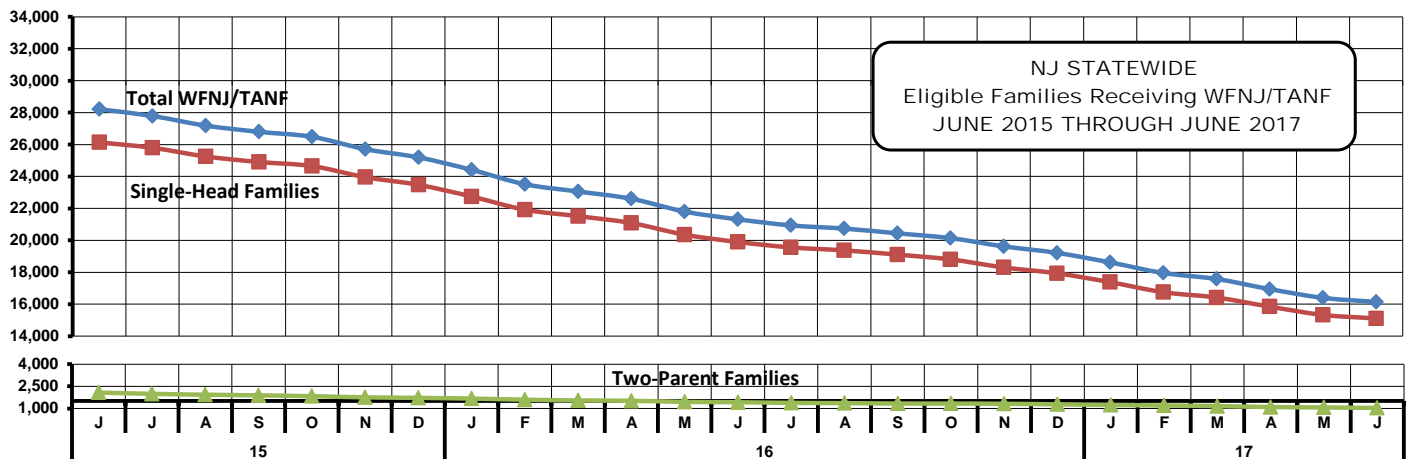
- During the report month of June 2017, there were 1,779 families in which at least one member was employed and an additional 305 families whose WFNJ assistance cases were closed due to employment - related earnings.
- The three counties with the greatest number of employed active WFNJ recipients were: Essex (388), Camden (265) and Passaic (196).
- There were 2,731 former TANF cases receiving post-TANF support in the form of child care assistance.

TABLE 1: WFNJ/TANF PROGRAM

STATEWIDE NUMBER OF APPLICATIONS AND TERMINATIONS DURING JUNE 2017

NUMBER OF ELIGIBLE FAMILIES & PERSONS RECEIVING WFNJ/TANF FOR JUNE 2017

JUNE 2015 THROUGH JUNE 2017												
		Cases Added	Cases Closed	Child-Only Cases ‡	Total Singl-Head Families	2- Parent Families	Total WFNJ/TANF Families	%CHNG (1 Yr.)	Total Persons	%CHNG (1 Yr.)	Adults	Children
2015	JUN	2,215	2,863	6,999	26,136	2,074	28,210	(17.2)	72,184	(18.0)	23,285	48,899
	JUL	2,268	2,812	6,931	25,797	1,990	27,787	(17.4)	70,950	(18.3)	22,846	48,104
	AUG	2,108	2,813	6,877	25,254	1,931	27,185	(19.1)	69,167	(20.2)	22,239	46,928
	SEP	2,263	2,767	6,787	24,908	1,888	26,796	(19.8)	68,235	(21.0)	21,897	46,338
	OCT	2,505	2,908	6,768	24,652	1,832	26,484	(20.8)	67,259	(22.1)	21,548	45,711
	NOV	1,888	2,665	6,696	23,955	1,754	25,709	(21.9)	65,212	(23.3)	20,767	44,445
	DEC	2,029	2,647	6,690	23,476	1,719	25,195	(22.3)	63,676	(24.0)	20,224	43,452
2015 Average		2,161	2,831	7,039	26,179	2,059	28,238		72,179		23,258	48,921
2016	JAN	1,774	2,617	6,569	22,745	1,669	24,414	(23.2)	61,590	(24.8)	19,514	42,076
	FEB	1,663	2,558	6,479	21,919	1,594	23,513	(24.3)	58,994	(26.1)	18,628	40,366
	MAR	1,922	2,516	6,469	21,516	1,543	23,059	(23.9)	57,608	(26.1)	18,133	39,475
	APR	1,788	2,363	6,357	21,085	1,520	22,605	(23.4)	56,458	(25.5)	17,768	38,690
	MAY	1,763	2,568	6,216	20,357	1,446	21,803	(24.5)	54,214	(26.7)	17,033	37,181
	JUN	1,839	2,417	6,094	19,898	1,421	21,319	(24.4)	52,864	(26.8)	16,646	36,218
	JUL	1,938	2,445	5,987	19,558	1,378	20,936	(24.7)	51,942	(26.8)	16,327	35,615
	AUG	1,924	2,146	5,931	19,374	1,363	20,737	(23.7)	51,450	(25.6)	16,169	35,281
	SEP	1,943	2,360	5,912	19,108	1,333	20,441	(23.7)	50,626	(25.8)	15,862	34,764
	OCT	1,701	2,090	5,858	18,807	1,331	20,138	(24.0)	49,962	(25.7)	15,611	34,351
	NOV	1,614	2,222	5,766	18,305	1,317	19,622	(23.7)	48,737	(25.3)	15,173	33,564
	DEC	1,592	2,088	5,762	17,937	1,280	19,217	(23.7)	47,656	(25.2)	14,735	32,921
2016 Average		1,788	2,366	6,117	20,051	1,433	21,484		53,508		16,800	36,709
2017	JAN	1,479	2,069	5,658	17,384	1,236	18,620	(23.7)	46,466	(24.6)	14,198	32,268
	FEB	1,436	2,167	5,591	16,753	1,203	17,956	(23.6)	44,778	(24.1)	13,568	31,210
	MAR	1,440	1,861	5,516	16,420	1,162	17,582	(23.8)	43,992	(23.6)	13,228	30,764
	APR	1,328	2,018	5,416	15,850	1,096	16,946	(25.0)	42,479	(24.8)	12,626	29,853
	MAY	1,295	1,835	5,222	15,332	1,069	16,401	(24.8)	41,214	(24.0)	12,248	28,966
	JUN	1,440	1,750	5,115	15,110	1,034	16,144	(24.3)	40,521	(23.3)	12,063	28,458
2017 AVG to date		1,403	1,950	5,420	16,142	1,133	17,275		43,242		12,989	30,253



Data is derived from NJ MMIS Shared Data Warehouse Issuance files.
Effective July 2013 this data query source was converted to the SDW

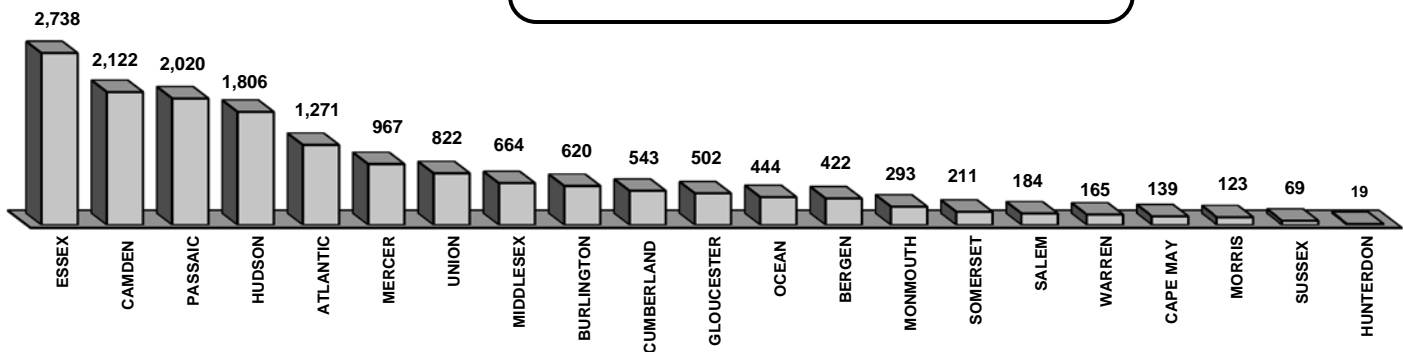
‡ Child-only cases are defined as families in which no eligible adult receives TANF program benefits, yet the family continues to be headed by at least one of the biological parents, or grandparents, or other appropriate adult.

Table 2
WFNJ/TANF
PROGRAM

NUMBER OF APPLICATIONS AND TERMINATIONS BY COUNTY DURING JUNE 2017
NUMBER OF ELIGIBLE FAMILIES RECEIVING WFNJ/TANF REPORTED FOR JUNE 2017

County	Cases Added	Cases Closed**	Child-		Total		Total		% Chng (3 Mon)	% Chng (1 Yr)
			Only Cases ‡	1-Adult Cases	Singl-Head Families	2-Parent Families	WFNJ/TANF Families			
ATLANTIC	90	102	411	761	1,172	99	1,271	(0.5)	(13.4)	
BERGEN	44	63	91	294	385	37	422	(5.0)	(35.0)	*
BURLINGTON	74	80	196	382	578	42	620	(4.0)	(24.0)	
CAMDEN	187	183	762	1,236	1,998	124	2,122	(1.3)	(13.1)	Δ
CAPE MAY	17	24	52	80	132	7	139	(14.2)	(45.1)	*
CUMBERLAND	51	66	233	270	503	40	543	(11.9)	(34.4)	
ESSEX	289	395	715	1,878	2,593	145	2,738	(8.5)	(29.2)	
GLOUCESTER	42	49	171	296	467	35	502	(2.5)	(18.0)	
HUDSON	178	223	510	1,174	1,684	122	1,806	(5.6)	(30.9)	
HUNTERDON	0	4	4	14	18	1	19	(5.0)	(45.7)	*
MERCER	79	102	357	567	924	43	967	(3.3)	(22.3)	
MIDDLESEX	62	80	317	324	641	23	664	(7.3)	(26.1)	
MONMOUTH	20	45	127	157	284	9	293	(7.9)	(14.8)	
MORRIS	15	17	37	69	106	17	123	(2.4)	(31.7)	
OCEAN	49	48	150	268	418	26	444	(4.5)	(31.3)	
PASSAIC	112	135	542	1,353	1,895	125	2,020	(2.9)	(22.3)	
SALEM	18	16	66	110	176	8	184	0.5	(11.1)	Δ
SOMERSET	24	27	80	119	199	12	211	(6.6)	(23.3)	
SUSSEX	5	7	22	40	62	7	69	(5.5)	(15.9)	
UNION	61	70	226	502	728	94	822	(5.2)	(25.6)	
WARREN	23	14	46	101	147	18	165	7.8	6.5	Δ
NJ TOTAL	1,440	1,750	5,115	9,995	15,110	1,034	16,144	(4.7)	(24.3)	

Total WFNJ/TANF Families
JUNE 2017
By County



Data is derived from NJ MMIS Shared Data Warehouse Issuance files.

Effective July 2013 this data query source was converted to the SDW

‡ Child-only cases are defined as families in which no eligible adult receives TANF program benefits, yet the family continues to be headed by at least one of the biological parents, or grandparents, or other appropriate adult

** "Cases closed" include cases that received a benefit in the prior month, but did not receive any TANF benefit for the report month.

"Δ=higher caseload % change

"*=lower caseload % change

Table 2B

WFNJ/TANF

PROGRAM

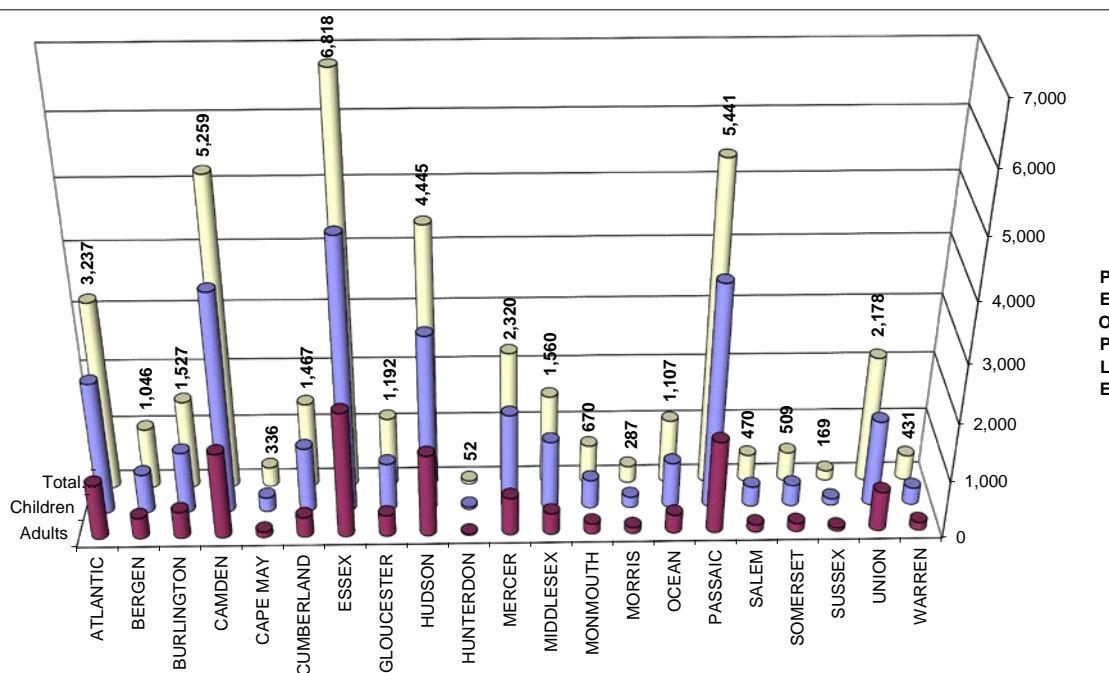
Δ= ↑ Caseload %

*= ↓ Caseload %

NUMBER OF PARTICIPATING PERSONS, ADULTS, AND CHILDREN BY COUNTY FOR JUNE 2017

PERSONS

County	Adults	Children	Child/Adult Ratio	Total Persons	% Chng (1 Yr)	Persons Per Case
ATLANTIC	959	2,278	2.38	3,237	(15.2)	2.55
BERGEN	368	678	1.84	1,046	(30.7)	2.48
BURLINGTON	466	1,061	2.28	1,527	(24.0)	2.46
CAMDEN	1,484	3,775	2.54	5,259	(12.8)	2.48
CAPE MAY	94	242	2.57	336	(48.0) *	2.42
CUMBERLAND	350	1,117	3.19	1,467	(32.4)	2.70
ESSEX	2,168	4,650	2.14	6,818	(29.4)	2.49
GLOUCESTER	366	826	2.26	1,192	(21.0)	2.37
HUDSON	1,418	3,027	2.13	4,445	(26.7)	2.46
HUNTERDON	16	36	2.25	52	(46.9) *	2.74
MERCER	653	1,667	2.55	2,320	(21.8)	2.40
MIDDLESEX	370	1,190	3.22	1,560	(26.6)	2.35
MONMOUTH	175	495	2.83	670	(18.6)	2.29
MORRIS	103	184	1.79	287	(34.8) *	2.33
OCEAN	320	787	2.46	1,107	(33.4)	2.49
PASSAIC	1,603	3,838	2.39	5,441	(21.4)	2.69
SALEM	126	344	2.73	470	(9.8) Δ	2.55
SOMERSET	143	366	2.56	509	(24.0)	2.41
SUSSEX	54	115	2.13	169	(10.1) Δ	2.45
UNION	690	1,488	2.16	2,178	(18.1)	2.65
WARREN	137	294	2.15	431	12.5 Δ	2.61
NJ TOTAL	12,063	28,458	2.36	40,521	(23.3)	2.51



Data is derived from NJ MMIS Shared Data Warehouse Issuance files.
Effective July 2013 this data query source was converted to the SDW

TABLE 3

**Work Participation Rates Achieved Over 12 Month Period
Ending With JUNE 2017**

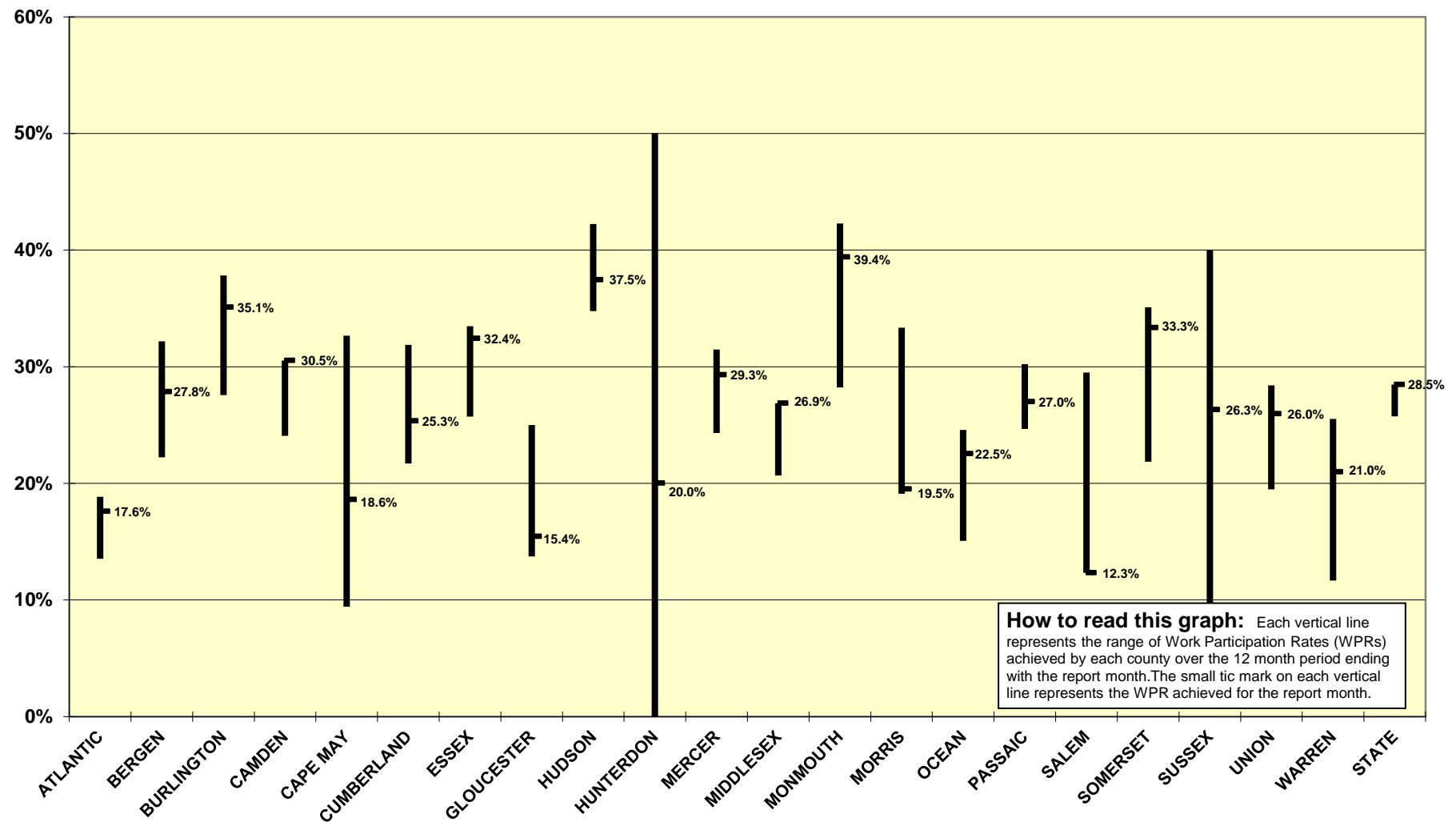
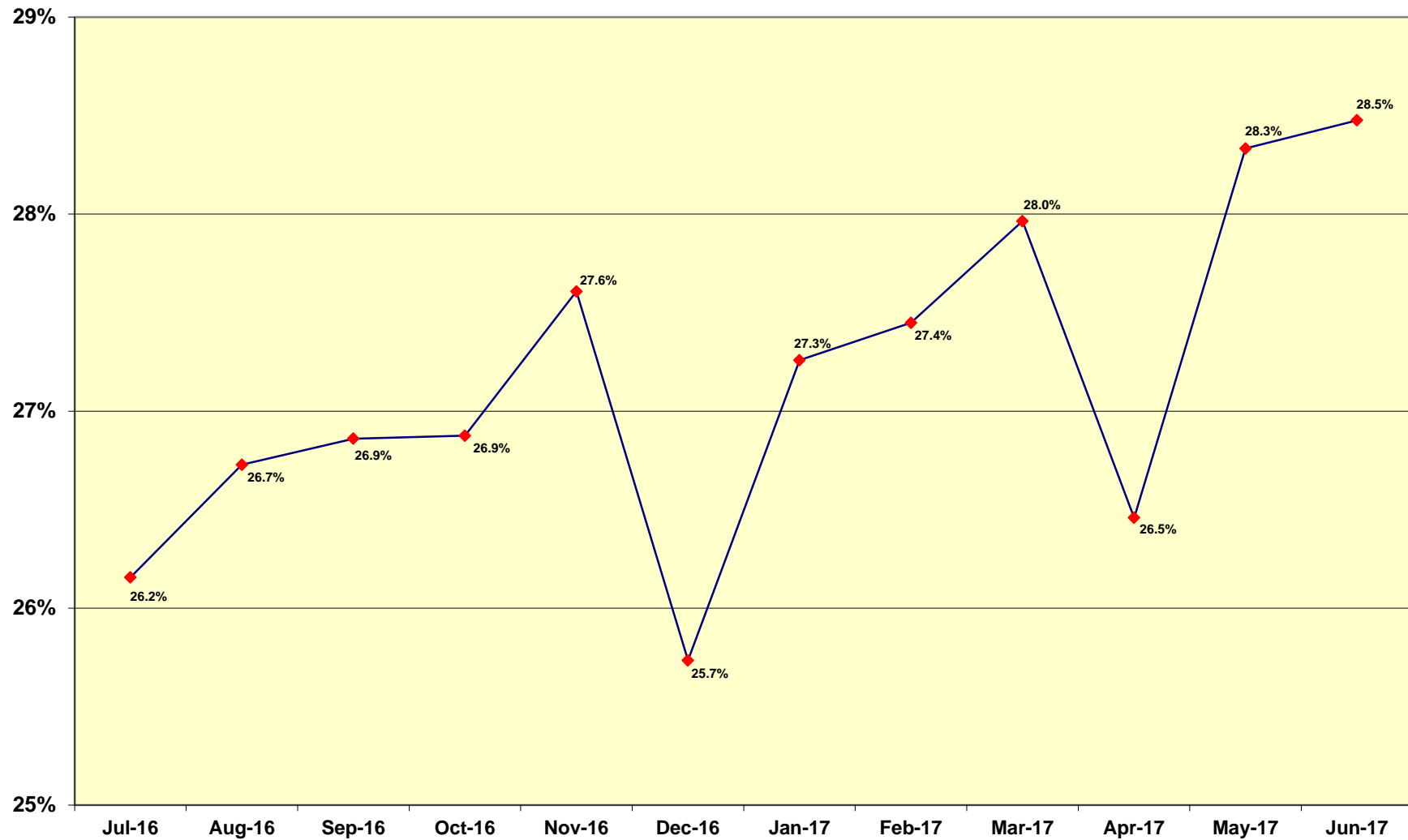


TABLE 4

**WFNJ/TANF Work Participation Rates
for 12-Month Period Ending with JUNE 2017 Statewide**



* The Work Participation rate measures the number of countable Temporary Assistance for Needy Families (TANF) participants based on federal formula. The reported rate is considered to be preliminary until officially calculated by the federal government soon after the close of each federal fiscal year.

Table 5
NJ SNAP
(FOOD STAMPS)

**NUMBER OF PARTICIPATING HOUSEHOLDS, PERSONS, ADULTS
AND CHILDREN FOR JUNE 2017 (STATEWIDE)**

JUNE 2015 THROUGH JUNE 2017

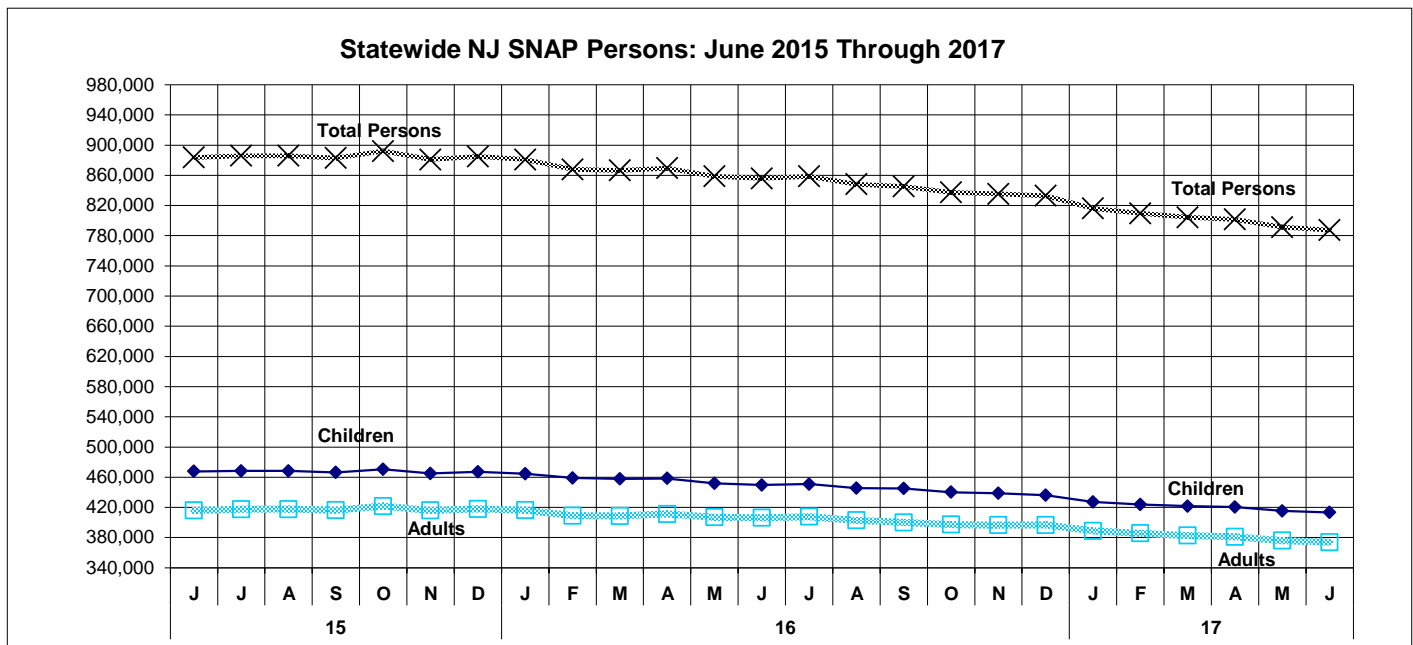
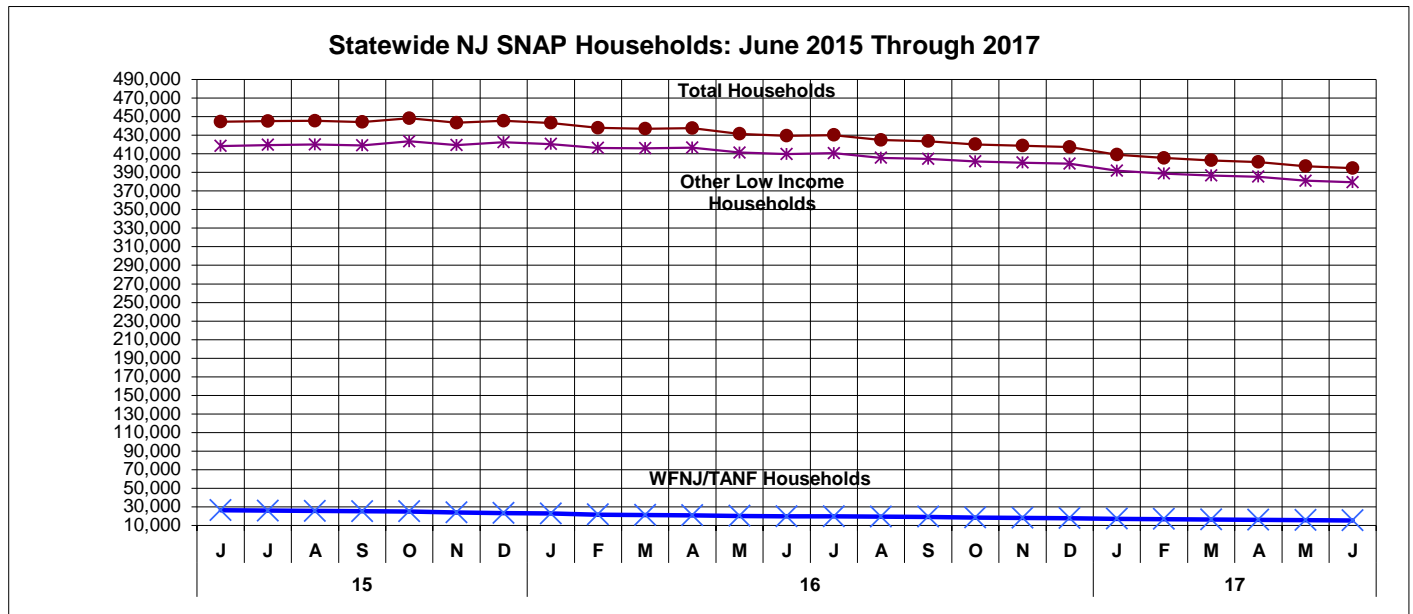
		HOUSEHOLDS				PERSONS			
		WFNJ/ TANF	Other low income	TOTAL	% CHNG (1 Yr.)	Adults	Children	TOTAL	% CHNG (1 Yr.)
2015	JUN	26,147	418,559	444,706	0.4%	467,732	415,927	883,659	0.1%
	JUL	25,731	419,621	445,352	-0.8%	468,342	417,557	885,899	-1.0%
	AUG	25,425	420,195	445,620	-1.5%	468,265	417,563	885,828	-1.8%
	SEP	25,122	419,181	444,303	-1.2%	466,474	416,349	882,823	-1.6%
	OCT	24,881	423,504	448,385	-1.3%	470,446	421,700	892,146	-1.4%
	NOV	23,856	419,586	443,442	-2.6%	464,987	415,952	880,939	-2.9%
	DEC	23,235	422,453	445,688	-2.0%	467,065	417,872	884,937	-2.4%
2015 Average		26,270	420,824	447,094		469,732	419,153	888,886	
2016	JAN	22,704	420,599	443,303	-2.4%	464,619	416,207	880,826	-2.6%
	FEB	21,540	416,382	437,922	-2.9%	458,883	408,965	867,848	-3.3%
	MAR	20,936	416,167	437,103	-2.3%	457,814	408,604	866,418	-2.6%
	APR	20,886	416,683	437,569	-2.3%	458,373	411,189	869,562	-2.3%
	MAY	20,066	411,401	431,467	-3.5%	451,706	406,955	858,661	-3.4%
	JUN	19,521	409,831	429,352	-3.5%	449,541	406,259	855,800	-3.2%
	JUL	19,521	410,696	430,217	-3.4%	450,900	407,672	858,572	-3.1%
	AUG	19,335	405,719	425,054	-4.6%	445,381	402,834	848,215	-4.2%
	SEP	19,095	404,660	423,755	-4.6%	445,123	400,055	845,178	-4.3%
	OCT	18,374	401,887	420,261	-6.3%	440,110	397,229	837,339	-6.1%
	NOV	18,083	400,647	418,730	-5.6%	438,718	396,519	835,237	-5.2%
	DEC	17,706	399,542	417,248	-6.4%	436,173	396,733	832,906	-5.9%
2016 Average		19,814	409,518	429,332		449,778	404,935	854,714	
2017	JAN	17,044	391,958	409,002	-7.7%	427,349	388,777	816,126	-7.3%
	FEB	16,687	388,842	405,529	-7.4%	423,886	385,701	809,587	-6.7%
	MAR	16,158	386,779	402,937	-7.8%	421,536	382,755	804,291	-7.2%
	APR	15,935	385,361	401,296	-8.3%	420,390	381,088	801,478	-7.8%
	MAY	15,525	381,043	396,568	-8.1%	415,301	375,949	791,250	-7.9%
	JUN	15,348	379,341	394,689	-8.1%	413,436	373,920	787,356	-8.0%
2017 AVG to date		16,116	385,554	401,670		420,316	381,365	801,681	

This Table is based on those Households & Persons that received SNAP issuances (benefits) during the month.

Data is derived from NJ MMIS Shared Data Warehouse.

Effective July 2013 this data query source was converted to the SDW.

**TABLE 6: NJ SNAP (FOOD STAMPS)
TRENDS FOR PARTICIPATING HOUSEHOLDS & PERSONS
JUNE 2015 THROUGH JUNE 2017 (STATEWIDE)**

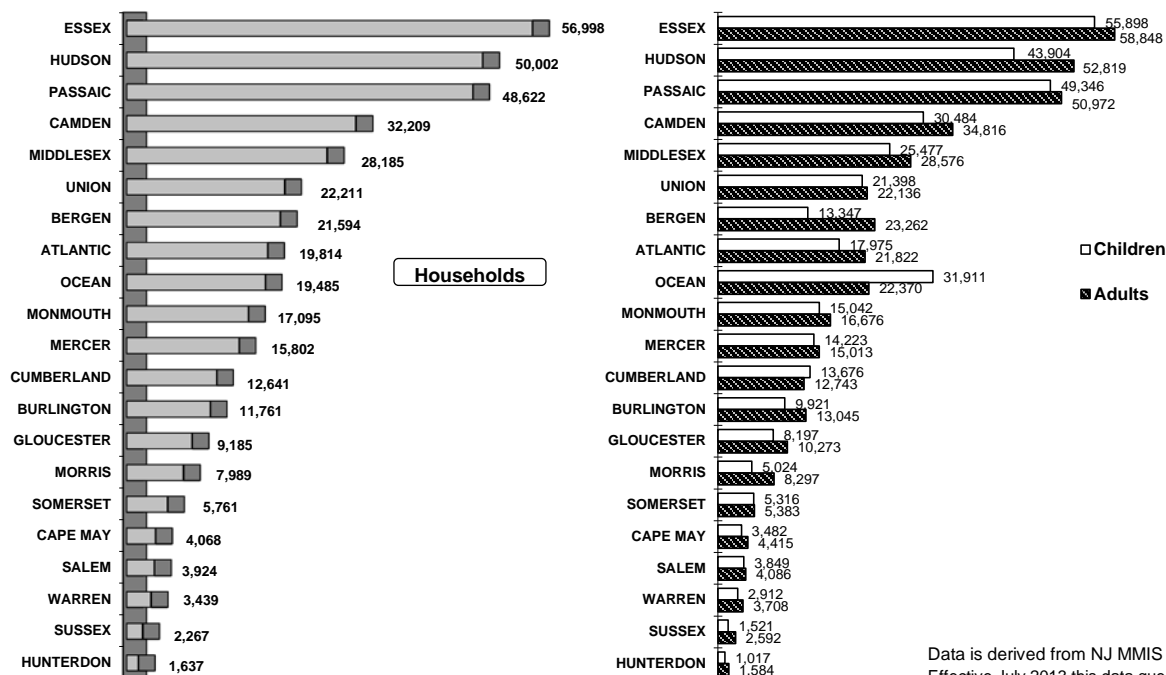


Data is derived from NJ MMIS Shared Data Warehouse.
Effective July 2013 this data query source was converted to the SDW.

Table 7
NJ SNAP**NUMBER OF PARTICIPATING HOUSEHOLDS, PERSONS, ADULTS
AND CHILDREN BY COUNTY FOR JUNE 2017**

Δ= ↑ Caseload %
*= ↓ Caseload %

County	HOUSEHOLDS				PERSONS			
	WFNJ/ TANF	Other low income	TOTAL	% Chng (1 Yr)	Adults	Children	TOTAL	% Chng (1 Yr)
ATLANTIC	1,115	18,699	19,814	(7.2)	21,822	17,975	39,797	(7.2)
BERGEN	393	21,201	21,594	(7.0)	23,262	13,347	36,609	(8.4)
BURLINGTON	552	11,209	11,761	(12.9) *	13,045	9,921	22,966	(12.5) *
CAMDEN	1,958	30,251	32,209	(4.5)	34,816	30,484	65,300	(4.5) Δ
CAPE MAY	122	3,946	4,068	(11.9) *	4,415	3,482	7,897	(12.7) *
CUMBERLAND	507	12,134	12,641	(9.8)	12,743	13,676	26,419	(9.1)
ESSEX	2,919	54,079	56,998	(11.0) *	58,848	55,898	114,746	(10.8) *
GLOUCESTER	438	8,747	9,185	(8.2)	10,273	8,197	18,470	(8.1)
HUDSON	1,702	48,300	50,002	(10.6)	52,819	43,904	96,723	(10.3)
HUNTERDON	19	1,618	1,637	(7.8)	1,584	1,017	2,601	(10.7)
MERCER	917	14,885	15,802	(5.6)	15,013	14,223	29,236	(5.9)
MIDDLESEX	638	27,547	28,185	(5.7)	28,576	25,477	54,053	(6.7)
MONMOUTH	283	16,812	17,095	(6.9)	16,676	15,042	31,718	(7.9)
MORRIS	125	7,864	7,989	(8.9)	8,297	5,024	13,321	(9.3)
OCEAN	424	19,061	19,485	(9.4)	22,370	31,911	54,281	(7.2)
PASSAIC	1,913	46,709	48,622	(4.4) Δ	50,972	49,346	100,318	(3.9) Δ
SALEM	164	3,760	3,924	(4.4) Δ	4,086	3,849	7,935	(4.8) Δ
SOMERSET	198	5,563	5,761	(7.1)	5,383	5,316	10,699	(8.4)
SUSSEX	75	2,192	2,267	(5.7)	2,592	1,521	4,113	(5.1)
UNION	745	21,466	22,211	(10.5)	22,136	21,398	43,534	(10.1)
WARREN	141	3,298	3,439	(2.2) Δ	3,708	2,912	6,620	(4.9)
NJ TOTAL	15,348	379,341	394,689	(8.1)	413,436	373,920	787,356	(8.0)

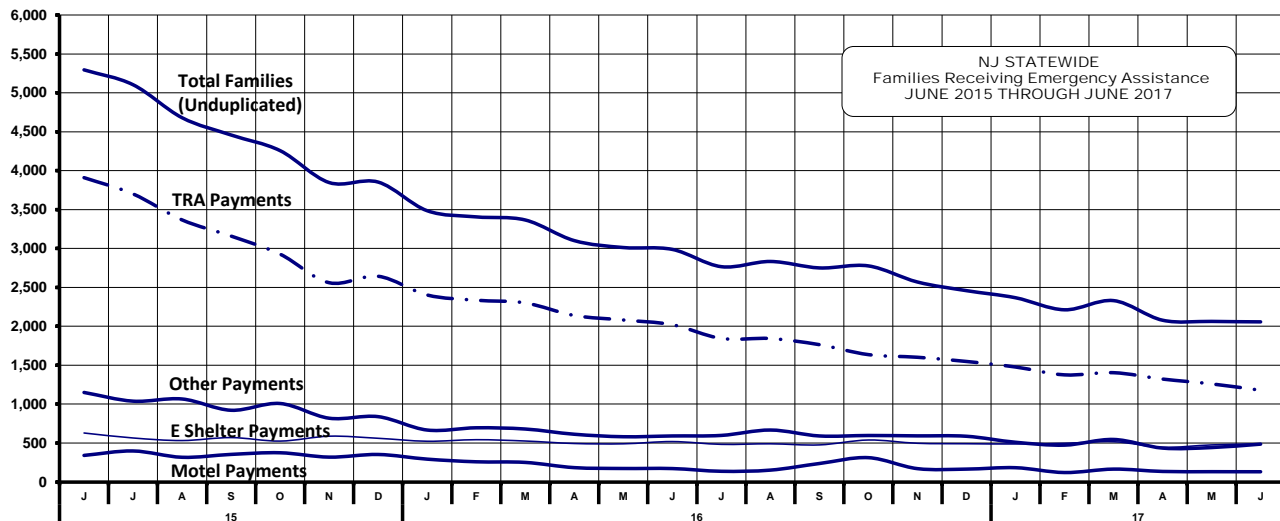
Total NJ SNAP Recipients
JUNE 2017 By County

Data is derived from NJ MMIS Shared Data Warehouse
Effective July 2013 this data query source was converted to the SDW

Table 8

TOTAL NUMBER OF ELIGIBLE FAMILIES RECEIVING EMERGENCY ASSISTANCE PAYMENTSEMERGENCY
ASSISTANCE
(STATEWIDE)**JUNE 2015 THROUGH JUNE 2017 - STATEWIDE**

		TOTAL WFNJ/EA		Temp Rent Asst.		Motel Housing		Shelter/Transitional Housing		Other EA	
		Families (Undupl)	% CHNG (1 YR)	Payments (Undupl)	% CHNG (1 YR)	Payments (Undupl)	% CHNG (1 YR)	Payments (Undupl)	% CHNG (1 YR)	Payments (Undupl)	% CHNG (1 YR)
2015	JUN	5,295	-19.0%	3,910	-17.7%	341	-33.4%	629	-5.0%	1,150	-19.9%
	JUL	5,104	-23.0%	3,701	-22.0%	398	-32.1%	565	-9.3%	1,038	-39.0%
	AUG	4,680	-26.5%	3,367	-26.8%	317	-41.0%	532	-8.4%	1,066	-29.2%
	SEP	4,458	-31.9%	3,159	-28.9%	354	-43.8%	570	-19.0%	921	-48.1%
	OCT	4,257	-36.0%	2,927	-37.0%	375	-44.4%	525	-15.6%	1,008	-42.0%
	NOV	3,847	-37.0%	2,560	-41.4%	319	-39.9%	588	-7.0%	819	-38.5%
	DEC	3,853	-37.8%	2,643	-40.1%	353	-38.2%	561	-12.8%	839	-41.9%
2015 Average		5,007		3,594		407		581		1,088	
2016	JAN	3,485	-40.8%	2,402	-43.8%	293	-48.4%	523	-15.8%	667	-50.2%
	FEB	3,406	-40.1%	2,335	-43.8%	259	-45.6%	543	-6.7%	696	-44.1%
	MAR	3,366	-41.8%	2,300	-45.5%	251	-51.3%	526	-9.6%	680	-45.6%
	APR	3,101	-46.1%	2,139	-49.4%	184	-58.7%	494	-20.3%	613	-49.5%
	MAY	3,012	-45.1%	2,081	-47.9%	173	-58.4%	490	-18.2%	581	-50.3%
	JUN	2,988	-43.6%	2,020	-48.3%	172	-49.6%	519	-17.5%	591	-48.6%
	JUL	2,766	-45.8%	1,844	-50.2%	137	-65.6%	483	-14.5%	598	-42.4%
	AUG	2,833	-39.5%	1,843	-45.3%	152	-52.1%	490	-7.9%	667	-37.4%
	SEP	2,750	-38.3%	1,764	-44.2%	237	-33.1%	476	-16.5%	591	-35.8%
	OCT	2,776	-34.8%	1,636	-44.1%	312	-16.8%	539	2.7%	597	-40.8%
	NOV	2,569	-33.2%	1,602	-37.4%	171	-46.4%	497	-15.5%	592	-27.7%
	DEC	2,458	-36.2%	1,548	-41.4%	165	-53.3%	491	-12.5%	587	-30.0%
2016 Average		2,959		1,960		209		506		622	
2017	JAN	2,367	-32.1%	1,477	-38.5%	183	-37.5%	488	-6.7%	510	-23.5%
	FEB	2,212	-35.1%	1,376	-41.1%	121	-53.3%	497	-8.5%	473	-32.0%
	MAR	2,330	-30.8%	1,404	-39.0%	165	-34.3%	517	-1.7%	546	-19.7%
	APR	2,078	-33.0%	1,322	-38.2%	135	-26.6%	446	-9.7%	435	-29.0%
	MAY	2,063	-31.5%	1,260	-39.5%	132	-23.7%	476	-2.9%	442	-23.9%
	JUN	2,057	-31.2%	1,178	-41.7%	131	-23.8%	490	-5.6%	486	-17.8%
2017 AVG to date		2,185		1,336		145		486		482	



WFNJ/EA data is derived from NJ MMIS Shared Data Warehouse.
Effective July 2013 this data query source was converted to the SDW.

* Effective Feb '11 Transitional Housing Payments were removed from "Other EA Payments" and added to "Shelter Payments."

Table 9
EMERGENCY
ASSISTANCE
(BY COUNTY)

**NUMBER OF TOTAL ELIGIBLE FAMILIES RECEIVING EMERGENCY ASSISTANCE PAYMENTS
BY COUNTY (UNDULICATED CASES) JUNE 2017**

County	TOTAL WFNJ/EA Families (Undupl)	% CHNG From Jun 16	Temp Rent Asst. Payments (Undupl)	Motel Housing Payments (Undupl)	Shelter/Transitional Housing Payments (Undupl)	Other WFNJ/EA Payments (Undupl)	SSI Recipients Receiving EA**
ATLANTIC	140	17.6% Δ	95	2	4	47	66
BERGEN	69	-36.7%	29	1	28	20	9
BURLINGTON	98	-44.6%	27	7	62	7	18
CAMDEN	74	-37.3%	29	5	34	16	5
CAPE MAY	23	-46.5% *	9	14	0	1	8
CUMBERLAND	2	-77.8% *	0	0	0	2	1
ESSEX	409	-43.8%	206	0	168	59	111
GLOUCESTER	33	-8.3%	18	1	9	13	7
HUDSON	169	-22.5%	113	5	35	30	15
HUNTERDON	3	-66.7% *	3	0	0	0	1
MERCER	125	-35.9%	65	3	36	50	53
MIDDLESEX	92	24.3% Δ	29	37	14	35	9
MONMOUTH	22	-35.3%	0	3	19	3	1
MORRIS	29	-31.0%	12	14	3	10	20
OCEAN	82	-46.1%	62	17	0	19	6
PASSAIC	434	-33.9%	335	1	28	111	81
SALEM	7	16.7%	0	0	0	7	4
SOMERSET	61	-22.8%	27	6	14	23	29
SUSSEX	10	-37.5%	5	0	4	2	4
UNION	160	3.2%	105	12	31	28	23
WARREN	15	25.0% Δ	9	3	1	3	5
NJ TOTAL	2,057	-31.2%	1,178	131	490	486	476

Δ = ↑ Caseload %

* = ↓ Caseload %

**SSI-EA includes pay codes 22 and 24, data is derived from NJ Division of Family Development FAMIS Report #FM430-03A

WFNJ/EA data is derived from NJ MMIS Shared Data Warehouse.

Effective July 2013 this data query source was converted to the SDW

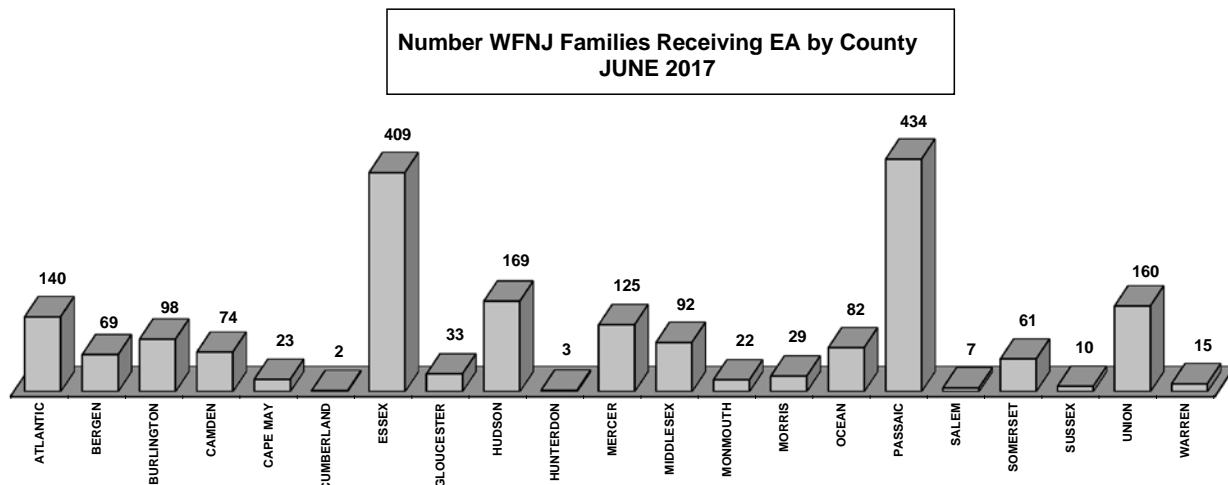


Table 10
GENERAL
ASSISTANCE
PROGRAM

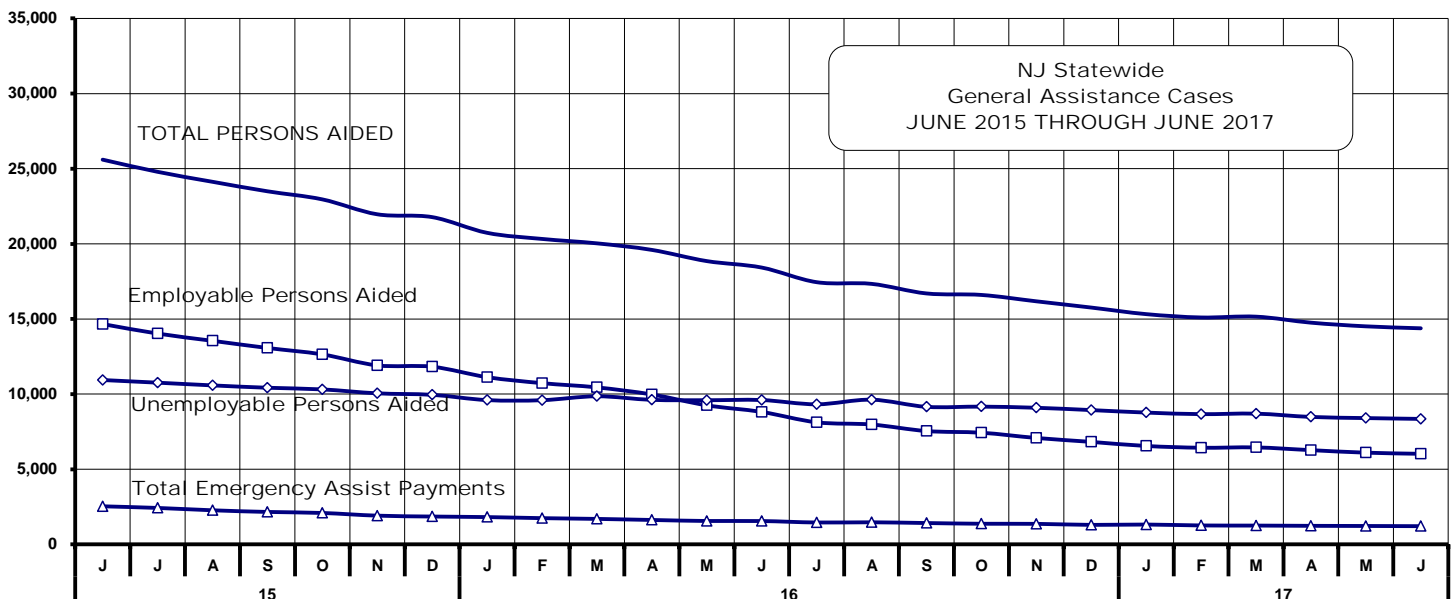
NUMBER OF EMPLOYABLE AND UNEMPLOYABLE RECIPIENTS AND EMERGENCY ASSISTANCE PAYMENTS FOR JUNE 2017 - STATEWIDE

JUNE 2015 THROUGH JUNE 2017

Total Cases

Emergency Assistance Cases

		Employable	% Chng (1 Yr)	Unemployable	% Chng (1 Yr)	Total	% Chng (1 Yr)	Temporary Rental Assistance	Other GA-EA	Total	% Chng (1 Yr)
2015	JUN	14,664	-26.8%	10,939	-10.3%	25,603	-20.6%	2,537	2,201	4,738	-15.6%
	JUL	14,031	-27.3%	10,763	-11.2%	24,794	-21.1%	2,428	2,175	4,603	-8.8%
	AUG	13,548	-27.6%	10,582	-11.9%	24,130	-21.5%	2,271	1,822	4,093	-23.0%
	SEP	13,073	-29.2%	10,425	-13.3%	23,498	-22.9%	2,161	1,706	3,867	-25.4%
	OCT	12,644	-29.9%	10,315	-15.1%	22,959	-23.9%	2,093	1,828	3,921	-28.8%
	NOV	11,914	-31.4%	10,054	-16.2%	21,968	-25.2%	1,914	1,509	3,423	-26.1%
	DEC	11,825	-31.2%	9,954	-15.5%	21,779	-24.8%	1,856	1,876	3,732	-28.2%
2015 Average		13,100		10,433		23,533		2,180	1,874	4,054	
2016	JAN	11,130	-33.8%	9,604	-17.8%	20,734	-27.2%	1,819	1,504	3,323	-35.8%
	FEB	10,731	-34.0%	9,597	-15.9%	20,328	-26.6%	1,748	1,578	3,326	-32.1%
	MAR	10,449	-35.2%	9,585	-15.7%	20,034	-27.2%	1,698	1,654	3,352	-36.8%
	APR	9,977	-35.2%	9,620	-14.2%	19,597	-26.3%	1,627	1,612	3,239	-36.9%
	MAY	9,257	-38.7%	9,596	-12.8%	18,853	-27.8%	1,559	1,163	2,722	-43.8%
	JUN	8,816	-39.9%	9,607	-12.2%	18,423	-28.0%	1,556	1,365	2,921	-38.3%
	JUL	8,126	-42.1%	9,324	-13.4%	17,450	-29.6%	1,459	1,236	2,695	-41.5%
	AUG	7,978	-41.1%	9,360	-11.5%	17,338	-28.1%	1,473	1,389	2,862	-30.1%
	SEP	7,545	-42.3%	9,156	-12.2%	16,701	-28.9%	1,423	1,209	2,632	-31.9%
	OCT	7,432	-41.2%	9,169	-11.1%	16,601	-27.7%	1,375	1,427	2,802	-28.5%
	NOV	7,084	-40.5%	9,093	-9.6%	16,177	-26.4%	1,369	1,328	2,697	-21.2%
	DEC	6,823	-42.3%	8,938	-10.2%	15,761	-27.6%	1,300	1,251	2,551	-31.6%
2016 Average		8,779		9,387		18,166		1,534	1,393	2,927	
2017	JAN	6,551	-41.1%	8,773	-8.7%	15,324	-26.1%	1,323	1,190	2,513	-24.4%
	FEB	6,433	-40.1%	8,669	-9.7%	15,102	-25.7%	1,262	1,111	2,373	-28.7%
	MAR	6,455	-38.2%	8,701	-9.2%	15,156	-24.3%	1,254	1,185	2,439	-27.2%
	APR	6,273	-37.1%	8,483	-11.8%	14,756	-24.7%	1,237	1,174	2,411	-25.6%
	MAY	6,105	-34.0%	8,407	-12.4%	14,512	-23.0%	1,227	1,180	2,407	-11.6%
	JUN	6,029	-31.6%	8,352	-13.1%	14,381	-21.9%	1,214	1,192	2,406	-17.6%
2017 AVG to date		6,308		8,564		14,872		1,253	1,172	2,425	



Source: NJ Division of Family Development, GA Fiscal Unit

TABLE 11

GENERAL
ASSISTANCE
PROGRAM**EMPLOYABLE AND UNEMPLOYABLE CASES
AND EMERGENCY ASSISTANCE CASES RECEIVING PAYMENTS BY COUNTY**

JUNE 2017

County	Total Cases						Emergency Assistance Cases			
	Employable	% Chng (From Jun 16)	Unemployable	% Chng (From Jun 16)	Total	% Chng (From Jun 16)	Temporary Rental Assist.	Other GA-EA	Total	% Chng (From Jun 16)
ATLANTIC	745	-31.7%	435	7.7%	1,180	-21.1%	151	45	196	8.3%
BERGEN	385	-34.1%	601	-23.1%	986	-27.8% *	162	15	177	-33.7%
BURLINGTON	298	-49.8%	575	-2.4%	873	-26.2% *	39	165	204	-25.0%
CAMDEN	611	-21.4%	990	-11.8%	1,601	-15.7%	67	110	177	-13.7%
CAPE MAY	33	-59.3%	111	6.7%	144	-22.2%	28	31	59	-21.3%
CUMBERLAND	235	-30.9%	344	-0.9%	579	-15.7%	6	2	8	-78.9% *
ESSEX	974	-29.8%	603	-10.1%	1,577	-23.4%	71	185	256	-23.4%
GLOUCESTER	221	-38.8%	312	-3.4%	533	-22.1%	15	45	60	-21.1%
HUDSON	551	-35.3%	1,129	-22.5%	1,680	-27.2% *	100	62	162	3.2%
HUNTERDON	42	20.0%	66	-22.4%	108	-10.0%	14	15	29	-21.6%
MERCER	227	-35.0%	496	-17.2%	723	-23.7%	57	51	108	-40.7% *
MIDDLESEX	288	-26.5%	365	-14.7%	653	-20.4%	76	88	164	16.3% Δ
MONMOUTH	62	-8.8%	188	-4.1%	250	-5.3% Δ	3	10	13	-69.8% *
MORRIS	141	-36.5%	266	-15.8%	407	-24.3%	83	52	135	-26.2%
OCEAN	191	-29.8%	325	-8.7%	516	-17.8%	61	44	105	-27.1%
PASSAIC	387	-37.3%	713	-17.9%	1,100	-25.9%	124	43	167	-21.6%
SALEM	50	28.2%	112	-31.7%	162	-20.2%	5	6	11	-26.7%
SOMERSET	72	-2.7%	90	9.8%	162	3.8% Δ	32	29	61	27.1% Δ
SUSSEX	86	-18.1%	37	-17.8%	123	-18.0%	3	27	30	7.1%
UNION	330	-29.6%	462	-17.1%	792	-22.8%	107	137	244	-5.1%
WARREN	100	-6.5%	132	17.9%	232	5.9% Δ	10	30	40	60.0% Δ
NJ TOTAL	6,029	-31.6%	8,352	-13.1%	14,381	-21.9%	1,214	1,192	2,406	-17.6%

Δ = ↑ Caseload %

* = ↓ Caseload %

Source: NJ Division of Family Development, GA Fiscal Unit

TABLE 12
OFFICE OF CHILD
SUPPORT
SERVICES

OFFICE OF CHILD SUPPORT SERVICES

Quarterly Performance Report

State Summary

TITLE IV-D SOURCE COLLECTION REPORT

Comparison of Quarter-3 (FFY 16 vs. FFY 17)

COLLECTION SOURCE	TOTAL 4/1/2016 - 6/30/2016	% OF TOTAL COLLECTIONS	TOTAL 4/1/2017 - 6/30/2017	% OF TOTAL COLLECTIONS	DOLLAR CHANGE	% CHANGE
FEDERAL TAX	\$ 17,905,599	5.31%	\$ 16,257,190	4.96%	\$ (1,648,409)	-9.21%
STATE TAX	\$ 4,084,597	1.21%	\$ 3,501,175	1.07%	\$ (583,422)	-14.28%
UIB	\$ 8,417,155	2.49%	\$ 7,850,195	2.40%	\$ (566,960)	-6.74%
INC WITHHOLD	\$ 222,503,022	65.94%	\$ 218,586,375	66.71%	\$ (3,916,647)	-1.76%
FROM OTHER STATES	\$ 13,081,804	3.88%	\$ 12,528,194	3.82%	\$ (553,610)	-4.23%
ADMIN ENFORCEMENT	\$ 2,920,494	0.87%	\$ 3,340,734	0.01	\$ 420,240	14.39%
OTHER	\$ 68,499,196	20.30%	\$ 65,597,607	20.02%	\$ (2,901,589)	-4.24%
TOTAL COLLECTIONS*	\$ 337,411,867	100%	\$ 327,661,470	100%	\$ (9,750,397)	-2.89%
DISTRIBUTED COLLECTIONS**	\$ 303,822,598		\$ 295,423,033		\$ (8,399,565)	-2.76%

* Includes collections on both current support and arrears.

** Includes collections on both current support and arrears; also includes money sent to other states.

SOURCE: NJKiDS (Based on Federal Quarterly Report of Collections - OCSE-34A except Distributed Collections)
Distributed Collections obtained from Federal Data Report - OCSE-157, which is reported annually to Congress and used in the calculation of incentive dollars earned by each state.

TABLE 13

OFFICE OF CHILD
SUPPORT SERVICES**OFFICE OF CHILD SUPPORT SERVICES**

State Summary

TITLE IV-D PATERNITY ESTABLISHMENT REPORT

Comparison of June (FFY 16 vs. FFY 17)

County Office	JUNE 2016			JUNE 2017			Increase or Decrease (-) from FFY 2016 to FFY 2017
	Total Children Born Out of Wedlock*	Number of Paternities Established	Percent of Paternities Established	Total Children Born Out of Wedlock*	Number of Paternities Established	Percent of Paternities Established	
Atlantic	8,105	7,946	98.0%	7,725	7,578	98.1%	0.1%
Bergen	4,173	4,085	97.9%	3,913	3,843	98.2%	0.3%
Burlington	7,005	6,692	95.5%	6,447	6,246	96.9%	1.4%
Camden	21,941	20,590	93.8%	20,511	19,408	94.6%	0.8%
Cape May	1,692	1,655	97.8%	1,586	1,562	98.5%	0.7%
Cumberland	8,376	8,287	98.9%	7,831	7,775	99.3%	0.3%
Essex	35,843	32,929	91.9%	33,598	31,065	92.5%	0.6%
Gloucester	5,804	5,704	98.3%	5,467	5,376	98.3%	0.1%
Hudson	14,808	13,799	93.2%	13,758	12,871	93.6%	0.4%
Hunterdon	438	429	97.9%	393	388	98.7%	0.8%
Mercer	9,643	9,178	95.2%	9,063	8,706	96.1%	0.9%
Middlesex	8,885	8,572	96.5%	8,254	8,010	97.0%	0.6%
Monmouth	7,250	6,902	95.2%	6,794	6,519	96.0%	0.8%
Morris	1,914	1,870	97.7%	1,725	1,693	98.1%	0.4%
Ocean	6,219	6,010	96.6%	5,884	5,722	97.2%	0.6%
Passaic	15,529	14,288	92.0%	14,272	13,323	93.4%	1.3%
Salem	2,901	2,811	96.9%	2,920	2,810	96.2%	-0.7%
Somerset	2,150	2,074	96.5%	1,986	1,908	96.1%	-0.4%
Sussex	797	787	98.7%	742	732	98.7%	-0.1%
Union	13,054	12,053	92.3%	12,432	11,649	93.7%	1.4%
Warren	1,247	1,230	98.6%	1,197	1,194	99.7%	1.1%
NJ TOTALS	177,774	167,891	94.4%	166,498	158,378	95.1%	0.7%

SOURCE: NJKiDS (Based on Federal Performance Measures - OCSE-157)

* Information on Out of Wedlock Births obtained from NJ Bureau of Vital Statistics

TABLE 14

OFFICE OF CHILD
SUPPORT SERVICES

OFFICE OF CHILD SUPPORT SERVICES

State Summary

TITLE IV-D REPORT OF CASES WITH ORDERS

Comparison of June (FFY 16 vs. FFY 17)

County Office	June 2016			June 2017			Increase or Decrease (-) from FFY 2016 to FFY 2017
	TOTAL CASES	CASES WITH ORDERS	% OF CASES WITH ORDERS	TOTAL CASES	CASES WITH ORDERS	% OF CASES WITH ORDERS	
Atlantic	14,188	12,390	87.3%	13,700	12,007	87.6%	0.3%
Bergen	13,599	12,954	95.3%	13,192	12,664	96.0%	0.7%
Burlington	16,182	13,930	86.1%	15,319	13,571	88.6%	2.5%
Camden	35,923	28,930	80.5%	34,268	28,402	82.9%	2.3%
Cape May	3,763	3,310	88.0%	3,498	3,182	91.0%	3.0%
Cumberland	13,564	12,807	94.4%	13,059	12,313	94.3%	-0.1%
Essex	53,498	41,306	77.2%	51,558	40,090	77.8%	0.5%
Gloucester	12,076	11,265	93.3%	11,664	11,040	94.7%	1.4%
Hudson	27,374	21,355	78.0%	25,866	20,735	80.2%	2.2%
Hunterdon	1,812	1,736	95.8%	1,673	1,610	96.2%	0.4%
Mercer	16,984	14,445	85.1%	16,166	14,189	87.8%	2.7%
Middlesex	20,823	18,983	91.2%	19,772	18,404	93.1%	1.9%
Monmouth	16,679	15,632	93.7%	16,032	15,128	94.4%	0.6%
Morris	6,977	6,685	95.8%	6,604	6,379	96.6%	0.8%
Ocean	17,085	16,036	93.9%	16,408	15,619	95.2%	1.3%
Passaic	27,126	19,602	72.3%	25,744	18,875	73.3%	1.1%
Salem	4,758	4,544	95.5%	4,733	4,571	96.6%	1.1%
Somerset	5,947	5,351	90.0%	5,708	5,214	91.3%	1.4%
Sussex	3,074	2,977	96.8%	3,001	2,867	95.5%	-1.3%
Union	21,904	19,413	88.6%	21,013	19,269	91.7%	3.1%
Warren	3,410	3,101	90.9%	3,349	3,045	90.9%	0.0%
NJ TOTALS	336,746	286,752	85.2%	322,327	279,174	86.6%	1.5%

SOURCE: NJKiDS (Based on Federal Performance Measures - OCSE-157)

TABLE 15

OFFICE OF CHILD
SUPPORT SERVICES**OFFICE OF CHILD SUPPORT SERVICES**

State Summary

TITLE IV-D COLLECTIONS ON CURRENT SUPPORT

Comparison of June (FFY 16 vs. FFY 17)

County Office	June 2016			June 2017			Increase or Decrease (-) from FFY 2016 to FFY 2017
	Total Current Support Due	Total Current Support Distributed	Total Collection Rate	Total Current Support Due	Total Current Support Distributed	Total Collection Rate	
Atlantic	\$4,199,263	\$2,825,237	67.3%	\$4,049,719	\$2,681,440	66.2%	-1.1%
Bergen	\$9,624,822	\$7,352,846	76.4%	\$9,125,885	\$7,021,305	76.9%	0.5%
Burlington	\$6,737,760	\$4,753,203	70.5%	\$6,423,083	\$4,500,254	70.1%	-0.5%
Camden	\$8,730,585	\$5,338,219	61.1%	\$8,615,664	\$5,218,329	60.6%	-0.6%
Cape May	\$1,238,584	\$860,989	69.5%	\$1,194,901	\$819,735	68.6%	-0.9%
Cumberland	\$3,329,043	\$1,984,311	59.6%	\$3,271,368	\$1,957,367	59.8%	0.2%
Essex	\$13,694,052	\$8,008,686	58.5%	\$12,497,313	\$7,373,840	59.0%	0.5%
Gloucester	\$4,757,029	\$3,110,878	65.4%	\$4,684,023	\$3,044,847	65.0%	-0.4%
Hudson	\$8,401,232	\$5,680,066	67.6%	\$7,942,157	\$5,419,818	68.2%	0.6%
Hunterdon	\$1,570,251	\$1,262,466	80.4%	\$1,430,109	\$1,157,883	81.0%	0.6%
Mercer	\$5,087,946	\$3,227,754	63.4%	\$4,774,446	\$3,009,516	63.0%	-0.4%
Middlesex	\$9,295,545	\$6,360,533	68.4%	\$8,677,885	\$6,015,274	69.3%	0.9%
Monmouth	\$8,674,789	\$6,301,525	72.6%	\$8,186,105	\$5,965,659	72.9%	0.2%
Morris	\$5,113,846	\$3,795,520	74.2%	\$4,868,193	\$3,615,209	74.3%	0.0%
Ocean	\$7,800,858	\$5,760,125	73.8%	\$7,475,853	\$5,453,761	73.0%	-0.9%
Passaic	\$7,656,119	\$4,800,164	62.7%	\$7,226,669	\$4,593,716	63.6%	0.9%
Salem	\$1,320,796	\$813,757	61.6%	\$1,308,106	\$787,564	60.2%	-1.4%
Somerset	\$3,661,869	\$2,879,224	78.6%	\$3,490,937	\$2,741,412	78.5%	-0.1%
Sussex	\$2,072,469	\$1,578,681	76.2%	\$1,972,595	\$1,526,558	77.4%	1.2%
Union	\$7,915,822	\$5,193,038	65.6%	\$7,572,267	\$5,126,370	67.7%	2.1%
Warren	\$1,534,426	\$1,164,203	75.9%	\$1,454,120	\$1,079,450	74.2%	-1.6%
NJ TOTALS	\$122,417,105	\$83,051,425	67.8%	\$116,241,395	\$79,109,305	68.1%	0.2%

SOURCE: NJKiDS (Based on Federal Performance Measures - OCSE-157)

TABLE 16

OFFICE OF CHILD
SUPPORT SERVICES**OFFICE OF CHILD SUPPORT SERVICES**

State Summary

TITLE IV-D CASES ARREARS COLLECTION REPORT

Comparison of June (FFY 16 vs. FFY 17)

County Office	June 2016			June 2017			Increase or Decrease (-) from FFY 2016 to FFY 2017
	Total Cases with Arrears	Total Amount Collected	Average Arrears Collection per Case	Total Cases with Arrears	Total Amount Collected	Average Arrears Collection per Case	
Atlantic	8,584	\$589,686	\$68.70	8,007	\$597,762	\$74.65	\$5.96
Bergen	8,771	\$1,162,794	\$132.57	8,175	\$1,171,102	\$143.25	\$10.68
Burlington	9,452	\$918,315	\$97.16	9,055	\$927,467	\$102.43	\$5.27
Camden	18,598	\$1,368,461	\$73.58	18,149	\$1,386,684	\$76.41	\$2.82
Cape May	2,371	\$189,728	\$80.02	2,174	\$191,982	\$88.31	\$8.29
Cumberland	8,685	\$504,632	\$58.10	8,222	\$512,912	\$62.38	\$4.28
Essex	29,313	\$2,133,056	\$72.77	26,329	\$2,159,458	\$82.02	\$9.25
Gloucester	7,857	\$655,215	\$83.39	7,478	\$662,776	\$88.63	\$5.24
Hudson	15,429	\$1,255,470	\$81.37	14,314	\$1,269,865	\$88.71	\$7.34
Hunterdon	1,093	\$187,847	\$171.86	994	\$189,013	\$190.15	\$18.29
Mercer	9,947	\$811,333	\$81.57	9,413	\$820,828	\$87.20	\$5.64
Middlesex	13,178	\$1,155,371	\$87.67	12,296	\$1,167,755	\$94.97	\$7.30
Monmouth	10,497	\$1,107,017	\$105.46	9,872	\$1,116,994	\$113.15	\$7.69
Morris	4,629	\$611,908	\$132.19	4,274	\$616,314	\$144.20	\$12.01
Ocean	10,935	\$1,145,768	\$104.78	10,319	\$1,156,192	\$112.04	\$7.27
Passaic	13,735	\$1,198,887	\$87.29	12,932	\$1,211,906	\$93.71	\$6.43
Salem	2,994	\$201,700	\$67.37	2,912	\$204,679	\$70.29	\$2.92
Somerset	3,638	\$498,576	\$137.05	3,473	\$502,186	\$144.60	\$7.55
Sussex	2,081	\$253,967	\$122.04	1,982	\$256,071	\$129.20	\$7.16
Union	13,732	\$1,255,623	\$91.44	12,875	\$1,268,589	\$98.53	\$7.09
Warren	2,113	\$184,804	\$87.46	2,008	\$186,899	\$93.08	\$5.62
NJ TOTALS	197,632	\$17,390,158	\$87.99	185,253	\$17,577,435	\$94.88	\$6.89

SOURCE:OCSE-157 Child Support Enforcement Annual Data Report

Table 17
WFNJ**WORK FIRST NEW JERSEY STATISTICAL SUMMARY****JUNE 2017**

COUNTY	EMPLOYMENT DIRECTED ACTIVITIES			EMPLOYED OPEN (WFNJ RECIPIENT)	SUPPORT SERVICES ON ACTIVE CASE		CLOSED FOR EMPLOYMENT THIS MONTH	POST ASSISTANCE CHILD CARE
	CWEP	ALL OTHER TRAINING	JOB SEARCH		CHILD CARE	TRAINING REL. EXPENSES		
ATLANTIC	104	127	37	125	45	244	24	84
BERGEN	57	3	63	27	35	44	8	72
BURLINGTON	69	24	39	91	87	73	13	179
CAMDEN	219	188	14	265	261	198	41	303
CAPE MAY	2	12	3	23	4	10	4	24
CUMBERLAND	42	56	42	30	31	57	7	65
ESSEX	544	630	49	388	416	641	69	639
GLOUCESTER	18	20	12	30	15	2	7	70
HUDSON	152	327	29	171	208	400	37	363
HUNTERDON	0	0	5	3	2	0	0	5
MERCER	139	62	95	137	114	112	18	147
MIDDLESEX	38	30	51	58	41	65	15	133
MONMOUTH	52	15	47	55	69	57	9	76
MORRIS	13	3	10	15	16	7	4	28
OCEAN	7	98	0	28	29	42	4	94
PASSAIC	330	278	33	196	229	252	21	189
SALEM	1	13	5	11	6	13	2	11
SOMERSET	38	17	14	32	28	23	7	50
SUSSEX	12	0	3	7	10	0	3	23
UNION	344	102	26	65	87	122	11	146
WARREN	22	12	7	22	19	5	1	30
STATE	2,203	2,017	584	1,779	1,752	2,367	305	2,731

Data is derived from NJ Division of Family Development's FAMIS Reports RM064-01 & RM703-51, AdHoc Reports 5549 & 5598 and SDW Report WR00022WZ_CC

DIVISION OF FAMILY DEVELOPMENT CURRENT PROGRAM STATISTICS
JUNE 2017

ACRONYMS

EMERGENCY ASSISTANCE (EA) - Payments to those eligible for WFNJ/TANF or WFNJ/GA, authorized during the 30 consecutive days immediately following the emergency (defined as a substantial loss of shelter, food, clothing, or household furnishings by fire, flood or other similar disaster) or if eligible individual or family is in an imminent or actual state of homelessness.

NJ SNAP - Formerly the Food Stamp Program, now known as **NJ SNAP** (NJ Supplemental Nutrition Assistance Program) authorized by Congress as a nutritional supplement program to provide low income households with more food of greater variety and better nutrition. Program eligibility is based on household income, resources, and expenses for medical, shelter, and dependent care. CWA staff refers certain recipients to the New Jersey Department of Labor for participation in the Food Stamp Employment and Training Program.

FAMIS: Family Assistance Management Information System

GAAS: General Assistance Automated System

NJKIDS: New Jersey Kids Deserve Support (Child Support Information Management System)

NJ MMIS SHARED DATA WAREHOUSE: The Shared Data Warehouse (SDW) is the repository for New Jersey's DFD and Medicaid data. Since 2003, OptumInsight has administered the SDW and provided access to the data through a reporting tool known as Business Objects.

OMEGA: Online Management of Economic Goal Achievement

SSI-EA: Supplemental Security Income-Emergency Assistance

WFNJ: Work First New Jersey - Fully implemented July 1, 1997, this is New Jersey's welfare reform program which responds to the requirements of the Federal Personal Responsibility and Work Opportunity Reconciliation Act (**PRWORA**) of 1996. PRWORA established Temporary Assistance for Needy Families (**TANF**) as the replacement for AFDC cash assistance. WFNJ includes two segments, **WFNJ/TANF** for families with children, and **WFNJ/GA** (General Assistance) for single adults and couples without dependent children. WFNJ emphasizes achieving self-sufficiency and limits lifetime receipt of financial assistance to a total of five years.

DIVISION OF FAMILY DEVELOPMENT CURRENT PROGRAM STATISTICS
JUNE 2017

EXPLANATORY NOTES

The Department of Human Services Division of Family Development provides basic income and an opportunity to achieve self-sufficiency for individuals and families served by the Division's programs. The Division provides leadership, direction and supervision to those public agencies responsible for administering those programs and plans for and develops policies to promote self-sufficiency.

WFNJ Statistical Summary (Table 17)

Employment Directed Activities (EDA) - From Activities Summary Report (OMEGA report # RM064). Unduplicated count of persons participating in Community Work Experience Program (CWEP), All Other Training, or Job Search.

Number of Persons Employed This Month, Still Receiving TANF Individuals with open "empl" activity on OMEGA. Ad hoc report.

Participants Receiving Child Care Services - From Issuance Disbursement Summary (OMEGA report # RM703). Total number of active participants who show receipt of **Child Care**.

Number of Persons Closed on FAMIS Due to Employment - From FAMIS report #5549-RM-2.

Post TANF and Receiving Child Care - Persons no longer in receipt of TANF but still receiving child care. From Share Data Warehouse Child Care case count based on Child Care payments (SDW report WR00022WZ_CC).